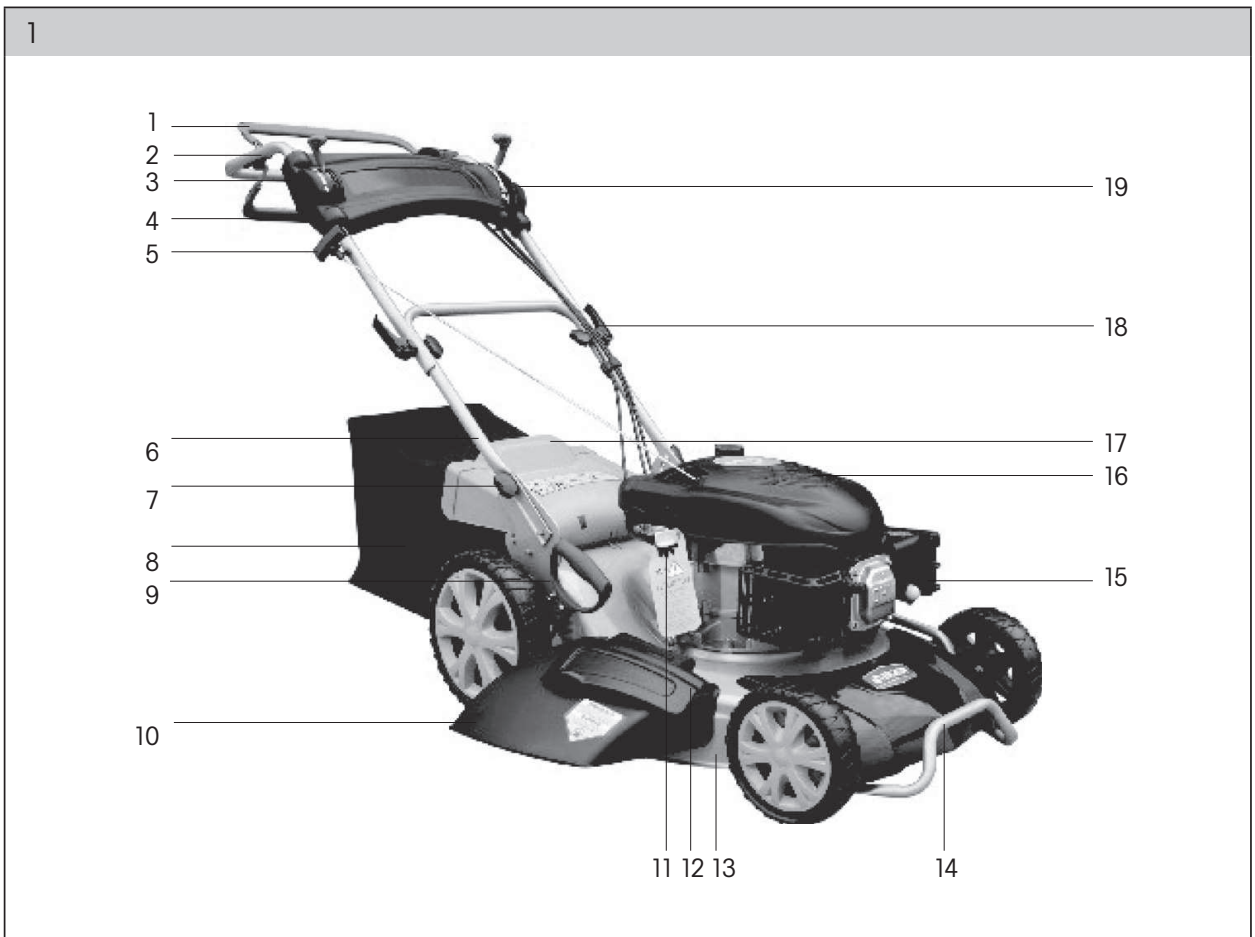
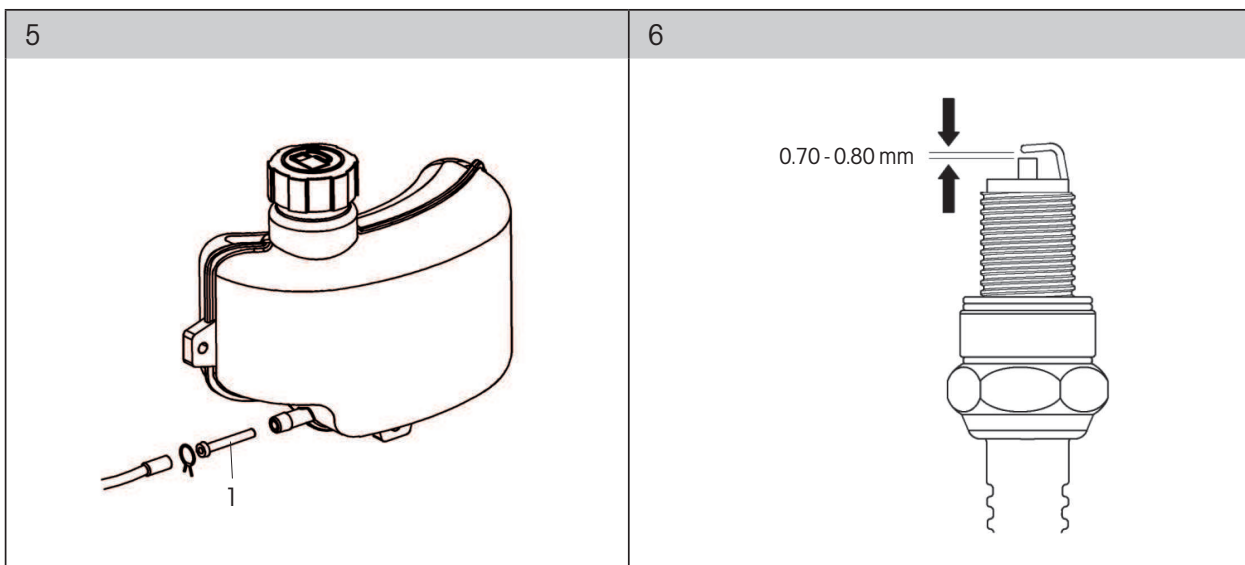
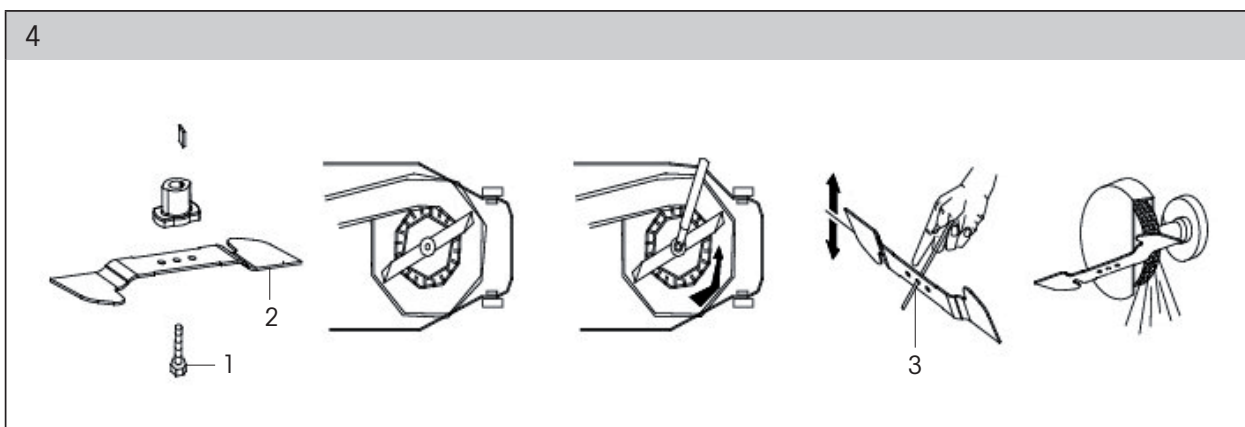
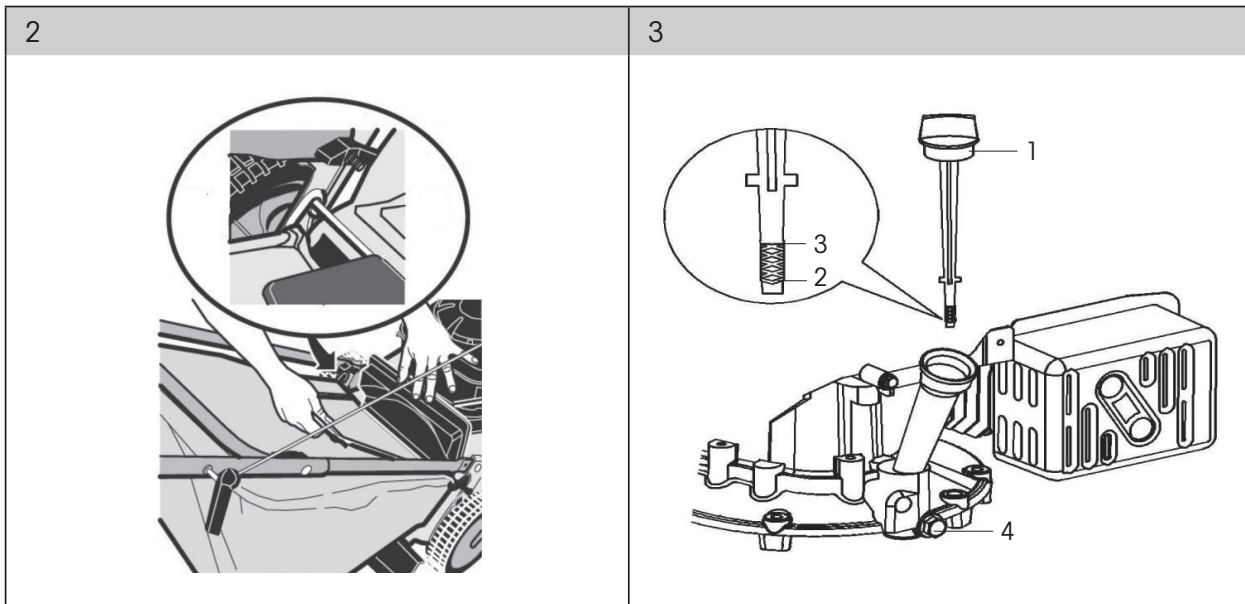


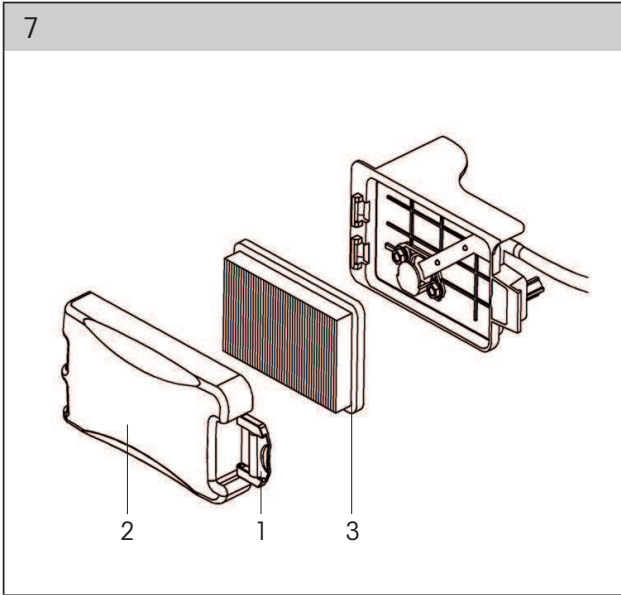


FZR 4617-BV

English	1 - 20
Čeština.....	21 - 36
Slovenčina.....	37 - 52
Magyarul.....	53 - 68
Polski	69 - 84







Petrol Lawnmower

USER'S MANUAL

Thank you for purchasing this rotary petrol lawnmower. Before you start using it, please, carefully read this user's manual and save it for possible future use.

TABLE OF CONTENTS

ILLUSTRATED ATTACHMENT	1
1. GENERAL SAFETY INSTRUCTIONS	6
Important safety information	6
Packaging	6
User's Manual	6
2. EXPLANATION OF INSTRUCTION LABELS ON THE MACHINE	7
3. DESCRIPTION OF THE MACHINE (figure 1).....	9
4. ASSEMBLY.....	9
Assembling the handle	9
Assembling the grass catcher (figure 2).....	9
5. PREPARATION AND INSPECTION BEFORE STARTING.....	10
Adding motor oil.....	10
Adding petrol.....	10
Setting the mowing height.....	10
Application range for the lawnmower	10
Mulching.....	10
Mowing with side discharge (figure 1 – point 10)	11
Inspection before starting.....	11
6. STARTING THE LAWNMOWER.....	11
7. MAINTENANCE.....	12
Changing the motor oil	12
Replacing / sharpening the mowing blade.....	12
Replacing the blade (figure 4)	12
Sharpening the blade.....	12
Cleaning the fuel sieve (figure 5).....	12
Replacing the spark plug	12
Checking the air filter (figure 7).....	13
8. REGULAR MAINTENANCE.....	14
Storage	14
9. LAWN CARE.....	15
Lawn care	15
10. SERVICING.....	15
Warranty does not cover	15
11. SAFETY INSTRUCTIONS.....	16
General safety instructions	16
Instructions for use	16
12. TECHNICAL SPECIFICATIONS.....	17
13. DECLARATION OF CONFORMITY	18
14. DISPOSAL	19

1. GENERAL SAFETY INSTRUCTIONS

IMPORTANT SAFETY NOTICE

- ✿ Carefully unpack the product and take care not to throw away any part of the packaging before you find all the parts of the product.
- ✿ Store the machine in a dry place out of reach of children.
- ✿ Read all warnings and instructions. Not following warnings or instructions may lead to injury by electrical shock, a fire and/or serious injuries.

PACKAGING


The product is packed in a package that prevents damage during transport. This package is a resource and so can be handed over for recycling.

USER'S MANUAL

Before you start working with the machine, read the following safety and usage instructions.

Acquaint yourself with the operating elements and the correct use of the machine. Keep the user's manual in a safe place where it can be easily retrieved for future use. Save the original packaging, including the internal packing material, warranty card and proof of purchase receipt at least for the duration of the warranty.

If you need to ship this machine, pack it in the original cardboard box to ensure maximum protection during shipping or transport (e.g. when moving or when you need to send this product for repair).

 **Note:** If you hand over the machine to somebody else, do so together with the user's manual. Following the instructions in the included user's manual is a prerequisite for the proper use of the machine. The user's manual also contains operating, maintenance and repair instructions.

The manufacturer takes no responsibility for accidents or damages resulting from not following the instructions in this manual.

2. EXPLANATION OF INSTRUCTION LABELS ON THE MACHINE



Before putting into operation, please carefully read the user's manual.



Keep other persons away from the work area.



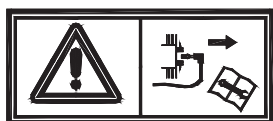
Attention, rotating blades! Protect yourself against the danger of injury to limbs.



Emission of toxic gasses. Do not use the petrol lawnmower in enclosed or unventilated areas.



Hot surfaces, risk of burns!



Before carrying out maintenance, turn off the engine and disconnect the spark plug.



Never add fuel while the engine is running.



Indicates that there is a risk of injury to persons, death or damage to the machine if instructions are not followed



Use hearing protection.
Use eye protection.
Use breathing organ protection.



Always maintain a distance from moving parts.



Travel along the slope on contours, not up and down.



Conforms to all relevant European directives.



Petrol is extremely flammable and therefore allow the engine to cool down for 2 minutes before adding more fuel.

3. DESCRIPTION OF THE MACHINE (figure 1)

1. start / brake lever
2. top part of the handle
3. throttle control lever
4. travel lever
5. starting pull cord
6. bottom part of the handle
7. thumb screws
8. grass catcher
9. mowing height adjustment handle
10. side discharge flap
11. oil dipstick
12. side discharge cover
13. lawnmower chassis
14. front bumper bar
15. fuel primer bulb
16. engine
17. rear discharge cover
18. quick couplers of the handle
19. travel speed control lever

4. ASSEMBLY

When using the lawnmower, always proceed in accordance with this manual.

Before using the lawnmower, it is necessary to unpack and assemble it.

ASSEMBLING THE HANDLE

Attach the bottom part of the handle (figure 1 – point 6) to the lawnmower chassis (figure 1 – point 13) and secure in place with screws (figure 1 – point 7). Then join the top part of the handle (figure 1 – point 2) to the bottom part and secure in place with the quick couplers (figure 1 – point 18). Attach the engine brake and travel control cables to the handle.

⚠ Caution! During assembly, be careful not to damage or bend the cables or the bowden cables. Their deformation may result in the lawnmower not functioning properly.

ASSEMBLING THE GRASS CATCHER (figure 2)

Open the rear cover and attach the grass catcher. Hang the grass catcher hook mount on to the shaft of the cover. Check that the grass catcher is firmly in place.

5. PREPARATION AND INSPECTION BEFORE STARTING

The lawnmower is supplied without oil and fuel!

It is necessary to add oil and petrol before first starting the lawnmower.

⚠ IMPORTANT! Running the engine without a sufficient amount of oil will result in irreversible damage to the engine.

ADDING MOTOR OIL

☼ pour in motor oil with the lawnmower level and the engine turned off.

- ☼ Use type 15W-40 oil. The capacity of the oil tank is approx. 0.6 litres.
- ☼ Pull out the oil dipstick (fig. 3 – point 1) and pour in the oil. Wipe the dipstick and insert it back into the engine but do not turn it. Pull the dipstick out again and check the oil level. The oil level must be between the minimum and maximum level marks (figure 3 – points 2 and 3).

ADDING PETROL

⚠ Attention: petrol is flammable!

Petrol can easily cause a fire. When in the vicinity of petrol, do not smoke and keep open flames or a sources of sparks away from it.

When the engine is cold, pour petrol with an octane number 90 or higher into the fuel tank. Pour in the petrol in a well ventilated location with the engine turned off. Do not smoke.

Do not pour in too much fuel to prevent overflowing the fuel tank. Check that the fuel tank cap is sealing properly.

If you spill some fuel, remove all remains before starting the engine, otherwise there exists a fire hazard.

Store petrol in a location that is sufficiently far away from fire. Avoid long term contact with petrol and breathing in petrol vapours. Keep away from children!

SETTING THE MOWING HEIGHT

The mowing height is set using the central elevation lever (figure 1 – point 9). You can select one of 8 positions in the range of 2.5 – 7.5 cm. Lawns made up of standard grass blends should not be mowed to a height lower than 4 cm. Lawn should not be shortened by more than 1/3 of its height.

APPLICATION RANGE FOR THE LAWNMOWER

- ☼ Mulching
- ☼ Mowing with collection of grass clippings in a grass catcher
- ☼ Mowing with rear discharge of grass clippings
- ☼ Mowing with side discharge of grass clippings

MULCHING

Insert the mulching plug into the discharge chute and secure in place.

1. Attach and remove the plug only with the engine turned off.

2. After attaching the mulching accessory, check its stability.
3. Use only original mulching accessories when mulching.
4. Try not to mow tall grass all at once, this will prevent overloading the lawnmower mechanism and the engine.
When mowing grass that has grown too tall, we recommend that you reduce the speed of travel.

MOWING WITH SIDE DISCHARGE (figure 1 – point 10)

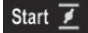
To attach the side discharge flap, lift up the side chassis cover on the lawnmower (figure 1 - point 12). Secure the flap (figure 1 – point 10) in place using hooks which fall under the shaft of the cover. When mowing with side discharge, it is necessary to place the mulching plug into the discharge chute.

INSPECTION BEFORE STARTING

Check that all nuts and bolts are firmly tightened, paying special attention to fast moving parts such as the blade. Use only original parts and install them correctly.

- ✿ Set the handle position.
- ✿ Attach the grass catcher. Check that it is sitting firmly in position.
- ✿ Set the desired mowing height.

6. STARTING THE LAWNMOWER

1. If the engine is cold, set the throttle lever (figure 1 – point 3) to the START position  (choke is engaged)
2. Pull the start / brake lever (figure 1 – point 1) towards the handle of the lawnmower
3. Pull on the starting pull cord (figure – point 5). Do not release the starting pull cord quickly, this could result in damage to the engine or other components by kickback. The starting cord must return slowly by the power of the return spring
4. Then set the throttle control lever to the RUN position (choke disengaged)
5. When the travel lever (figure 1 - point 4) is pulled to the handle, the lawnmower will start moving forward
6. To stop, release the travel lever (figure 1 – point 4)
7. To turn off the engine release the Start/brake lever (figure 1 – point 1)

⚠ Dangerous! The blade is active when the engine is running. If you touch the blade at this point, you may suffer serious injuries.

7. MAINTENANCE

CHANGING THE MOTOR OIL

Perform the first oil change after 5 hours of operation. Thereafter, change the oil 1x per year. The drain plug is located underneath the engine (figure 3 – point 4). Place a container under the engine to catch the oil and then remove the plug. Tilt the lawnmower so that all the oil can drain from the oil tank.

After draining the oil, put the plug back into the hole, making sure that the plug is securely in its place and wipe away any drops of spilled oil.

Add type 15W-40 oil into the oil tank. When the oil dipstick is inserted into the hole (not after being screwed in), the oil level should be between the Min and Max marks (figure 3). Do not overfill the oil tank.

Start the engine and allow it to run for a short time. Stop the engine, wait 1 minute and check the oil level in the oil tank. Add oil to the required level if necessary.

REPLACING / SHARPENING THE MOWING BLADE

For this task, we recommend that you contact an authorised service centre.

⚠ Caution! Only use an original blade.

REPLACING THE BLADE (figure 4)

Loosen the bolts (figure 4 – point 1), take off the blade (figure 4 - point 2), perform an inspection, replace damaged or worn out parts.

For tightening bolts with a torque of approx. 45 Nm, use a special tool.

SHARPENING THE BLADE

- ✿ Loosen the bolts, take off the blade and sharpen the cutting surfaces. Before remounting, it is necessary to balance the blade. Balance it by using a shaft (figure 4 – point 3) and sharpen the heavier side of the blade if necessary. For tightening bolts with a torque of approx. 45 Nm, use a special tool.
- ✿ Only use original spare parts because poor quality spare parts will damage the lawnmower and may also endanger your personal safety.
- ✿ In the event of more serious problems, please contact an authorised service centre and have the machine repaired by a professional. Do not disassemble or adjust the machine on your own.

CLEANING THE FUEL SIEVE (figure 5)

For this task, we recommend that you contact an authorised service centre.

⚠ DANGEROUS! Petrol is highly flammable and explosive. When in the vicinity of petrol, do not smoke and keep open flames or a sources of sparks away from it.

Take out the filter (figure 5 – point 1) from the fuel tank or from the tube, clean the filter (remove soils from the sieve and check that the sieve is not damaged). Put the filter back and join the tubes.

REPLACING THE SPARK PLUG

For this task, we recommend that you contact an authorised service centre.

Recommended spark plug: **F7RTC TORCH**

⚠ IMPORTANT!

Never use a spark plug that has an incorrect thermal value.

To ensure normal operation of the engine, the spark plug must have the correct distance between the electrodes and must not be clogged.

⚠ WARNING!

Immediately after the engine is turned off, the exhaust muffler is very hot, so do not touch it.

- ✿ When replacing the spark plug, use a special spark plug wrench
- ✿ Visually inspect the spark plug. If it exhibits evident signs of wear or the insulator is cracked, replace it. Measure the distance of the spark plug's electrodes using a feeler gauge. If necessary, adjust the distance between the electrodes to 0.70-0.80 mm (figure 6).
- ✿ Check the condition of the spark plug washer and to prevent damaging the thread, first screw the spark plug in by hand.
- ✿ After fully screwing in the spark plug, pull it tight using a special spark plug wrench.

📖 Note:

If you are installing a new spark plug, it is necessary to tighten it by another 1/2 revolution to compress the washer. If you are installing an old spark plug, it is necessary to tighten it by another 1/8-1/4 revolution to compress the washer.

⚠ IMPORTANT!

The spark plug must be correctly tightened because otherwise it would overheat and could damage the engine.

CHECKING THE AIR FILTER (figure 7)

For this task, we recommend that you contact an authorised service centre.

⚠ Never operate the engine without an air filter installed because this would wear out the engine faster.

Checking the air filter: loosen the fastening spring (figure 7 – point 1), remove the cover (figure 7 – point 2), check that there is no dust or foreign objects inside the filter insert (figure 7 – point 3). Clean the filter by gently tapping it against a hard surface or by blowing it with compressed air from the side of the metal grill. If the filter is torn or otherwise damaged, replace it immediately. Also replace the filter if it is heavily soiled. Never use a brush for cleaning as this would push dust into the structure of the filter material.

8. REGULAR MAINTENANCE

- ✿ All nuts, pins and bolts must be properly tightened so that the machine is in a safe and operational condition. Regular maintenance is the basic prerequisite for ensuring safety of the user, maintain the lawnmower's operating condition and high performance.
- ✿ Never store a machine with petrol in the fuel tank inside a building where the fumes could come within range of an open fire, sparks or sources of high temperature
- ✿ Before storing in any enclosed area, allow the engine to cool down.
- ✿ To reduce the risk of a fire, ensure that the lawnmower and in particular the engine, exhaust muffler, battery and also the location of spare fuel storage are free of grass, leaves or excessive amounts of lubricant.
- ✿ Regularly inspect the condition of the deflector and the grass catcher; replace if damaged.
- ✿ Drain the fuel in a well ventilated area when the engine has cooled down.
- ✿ When removing or installing the mowing blade, use thick work gloves.
- ✿ It is necessary to check the balance of the mowing blade every time that it is sharpened.

⚠ ATTENTION: Before carrying out maintenance or repairs, stop the engine and disconnect the spark plug.

- ✿ Before using the four-stroke engine, please carefully read the user's manual of the engine. Regularly check the oil level and if necessary add oil or change it.
- ✿ Regularly inspect the lawnmower and ensure that all grass deposits are removed from the underside of the chassis.
- ✿ Regularly lubricate the axle of the chassis and the bearings using a suitable lubricant.
- ✿ Regularly inspect the condition of the blades because they have a significant effect on the performance of the lawnmower. Blades should always be sharp and balanced.
- ✿ In regular intervals, check that all nuts and bolts are tightened. Nuts and bolts that are worn out or incorrectly tightened may cause serious damage to the engine or the frame.
- ✿ If the blade strongly impacts an obstacle, stop the lawnmower and take it to an authorised service centre.
- ✿ **BLADE:** the blade is made from pressed steel. To achieve the best possible mowing results, regularly sharpen the blades, approximately after every 25 hours of operation. Check that the blade is always correctly balanced. To do this, insert a steel axle (with a diameter of 2-3 mm) into the middle hole. If it is correctly levelled, the axis will remain in the horizontal position.
- ✿ If the blade does not remain in the horizontal position, replace it.
- ✿ When removing the blade, screw out the bolt, check the load bearing part of the blade. If the parts are worn out or damaged, replace them.

⚠ ATTENTION: Always use only original spare parts. Poor quality spare parts may cause serious damage to the lawnmower and create a safety hazard.

STORAGE

- ✿ If you will not be using the machine for an extended period of time, store it according to the following instructions. This will extend the lifetime of the machine.
- ✿ Fully drain fuel from the fuel tank and the carburettor.
- ✿ Screw out the spark plug and pour a small amount of motor oil into the socket. Gently pull the pull cord 2 to 3 times.
- ✿ Use a clean cloth to clean the exterior surfaces. Store the machine in a clean dry location.

9. LAWN CARE

LAWN CARE

- ✿ Various forms of care are required depending on the type of grass area.
- ✿ Therefore, always read the instructions included on seed packages with respect to the mowing height for the growing conditions in the given locality.
- ✿ It is necessary to always keep in mind that the larger part of grass consists of a stem and one or more leaves. When the leaves are cut off completely, the lawn is damaged and the renewal of growth will be much more difficult.
- ✿ The following instructions generally apply:
 - excessively low mowing causes disruption to the roots and subsequently "spotty" appearance;
 - in summer, mowing must be higher to prevent the soil from drying out;
 - mowing wet grass may result in a lower efficiency of the blade due to grass catching on the blade and grass being ripped out of the ground;
 - in the event of exceptionally tall grass it is appropriate to perform the first mow at the maximum permitted mowing height of the machine and then mow again only after two or three days.
- ✿ The lawn will have a better appearance when it is mowed regularly over its entire area at the same height with alternating mowing directions.

10. SERVICE

- ✿ In the event that after purchasing the product you find any kind of defect, contact the service department. When using the product, follow the instructions contained in the included user's manual.
- ✿ A complaint will not be accepted if you modified the product or if you did not follow the instructions in the user's manual.

WARRANTY DOES NOT COVER

- ✿ Normal wear and tear of operating parts of the machine as a result of its use
- ✿ Servicing tasks related to standard maintenance of the machine (e.g. cleaning, lubrication, tuning, etc.). Defects caused by external effects (e.g. climatic conditions, dustiness, inappropriate use, etc.)
- ✿ Mechanical damage resulting from the machine being dropped, impact, etc.
- ✿ Damages resulting from unprofessional handling, overloading, use of incorrect parts, inappropriate tools, etc.
- ✿ On returned products that were not properly protected against mechanical damage during transport, the risk of potential damage is borne exclusively by the owner.

11. SAFETY INSTRUCTIONS

GENERAL SAFETY INSTRUCTIONS

- ✿ This product is used exclusively for mowing grass. Do not use it for any other purposes than those intended. Otherwise there is a risk of damaging it or an injury.
- ✿ Never allow children or persons who are not acquainted with the contents of this user's manual to work with the machine.
- ✿ The person operating the lawnmower is responsible for the safety of persons in the work area. Never operate the lawnmower in the near vicinity of other people, children or freely roaming animals.
- ✿ Before starting mowing, check the terrain where the lawnmower will be used and remove stones, wires, sticks, splinters, bones and other foreign objects, which could become caught in it or deflected or cause injuries.

INSTRUCTIONS FOR USE

- ✿ All nuts, pins and bolts must be properly tightened so that the machine is in a safe and operational condition.
- ✿ Never use the lawnmower without the grass catcher or protective cover.
- ✿ Never use the lawnmower with loose mowing blades. Always check in advance that all respective bolts are securely tightened. Blunt blades must be sharpened evenly. Damaged blades must be replaced.
- ✿ When working with the lawnmower, wear long pants and solid footwear.
- ✿ Never start the lawnmower in enclosed or poorly ventilated areas where fumes could accumulate. Emissions from the engine contain carbon monoxide, which is life threatening.
- ✿ Work only during sufficient light conditions (in daylight or sufficient artificial lighting).
- ✿ Do not use the lawnmower when it is raining or if the grass is wet.
- ✿ Proceed especially carefully when mowing in elevated terrain (on a slope). Always mow perpendicular to the slope, parallel to the contour, and not directly up/down.
- ✿ Under no condition leave the lawnmower running without supervision; if you leave the lawnmower, turn off the engine.
- ✿ Never lift the rear part of the lawnmower when starting it and always keep your limbs away from the cutting deck or the rear grass ejection chute while the engine is running.
- ✿ Never modify the engine's speed setting.
- ✿ On lawnmowers with travel, release the travel lever before starting the engine.
- ✿ Never transport the lawnmower while its engine is running.
- ✿ Stop the engine and disconnect the spark plug in the following cases:
 - when performing any task whatsoever under the mowing deck or in the rear grass ejection chute.
 - when performing maintenance, repairs or inspecting the machine.
 - before carrying, lifting or transporting the lawnmower.
 - when you leave the lawnmower without supervision or you are getting ready to adjust the mowing height.
 - before removing and emptying the grass catcher.
 - when an impact with a foreign object occurs, stop the engine and carefully inspect to ensure that there is no damage. In the event of damage, take the lawnmower to a specialised service centre for repairs.

⚠ ATTENTION: The mowing blade continues to rotate for several seconds after the engine is turned off.

- if the lawnmower is vibrating abnormally (immediately identify and remedy the cause of the vibration).
- For the purpose of ensuring safe operation, regularly check that the pins, bolts and nuts on the lawnmower are securely tightened.

⚠ ATTENTION: FUEL IS A VERY FLAMMABLE LIQUID.

- ☼ Store fuel in a suitable container.
- ☼ Only add fuel in an open and well ventilated location. When handling fuel, do not smoke or use a mobile phone.
- ☼ Only add fuel when the engine is turned off. Never open the fuel tank or add fuel if the engine is hot or if it is running.
- ☼ If fuel is spilled, do not start the engine. Take the lawnmower away from the location where the fuel was spilled and take care to avoid possible ignition. Continue with work only after the spilled fuel has evaporated and the fuel fumes have dissipated;
- ☼ After adding fuel, securely tighten the fuel tank cap and the cap on the fuel canister.

⚠ ATTENTION: Before carrying out maintenance or repairs, stop the engine and disconnect the spark plug.

12. TECHNICAL SPECIFICATIONS

Model	FZR4617BV
Engine type	4-stroke with OHV valve system
Engine power (kW)	2.7 kW
Mowing width (mm)	456
Number of travel speeds	4 speed levels
Mowing height (mm)	25-75
Setting the mowing height	Eight levels
Grass catcher capacity	50 l
Maximum blade speed (1/min)	3060
Noise level (LWA): (dB(A))	98
Net weight (kg)	38
Blade type	Straight

Amendments to text and technical parameters are reserved.

Changes in the text, design and technical specifications may be made without prior notice and we reserve the right to make these changes.

13. DECLARATION OF CONFORMITY

ES DECLARATION OF CONFORMITY

We Fast ČR, a.s., Černokostelecká 251 01 Říčany u Prahy, tel.:323204111, hereby declare, that the Fieldmann FZR 4617 BV Petrol Lawnmower (year of manufacture is indicated on the rating label and is followed by the serial number of the machine, meets the directives COUNCIL DIRECTIVE:

2006/42/EC – 2004/108/EC – 2000/14/EC – 97/68/EC – 2002/88/EC

and was tested in compliance with the norms below:

EN 55012

EN 836 – EN 836/A1 – EN 836/A2 – EN 836/A3

EN ISO 5395 – 1:2013

EN ISO 14982:2009

EN ISO 3744:2010

ISO 11094:1991

FAST ČR, a.s. is authorised to act on behalf of the manufacturer.

CE label: 14

In Říčany, on 27. 8. 2014

FAST

ICO: 26726548

DIČ: CZ26726548

FAST ČR, a.s.

Černokostelecká 1621

251 01 Říčany u Prahy

tel.: +420/ 323 204 111

fax: +420/ 323 204 110



Petr Uher
Quality Manager

14. DISPOSAL

INSTRUCTIONS AND INFORMATION REGARDING THE DISPOSAL OF USED PACKAGING MATERIALS

Dispose of used packaging material at a site designated for waste in your municipality.



The machine and its accessories are manufactured from various materials, e.g. metal and plastic.

Take damaged parts to a recycling centre. Inquire at the relevant government department.



This product meets all the basic requirements of EU directives that apply to it.

Changes in the text, design and technical specifications may be made without prior notice and we reserve the right to make these changes.

User's manual in the original language.

