

Always here to help you

Register your product and get support at
www.philips.com/welcome

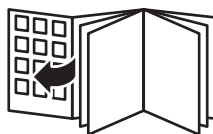


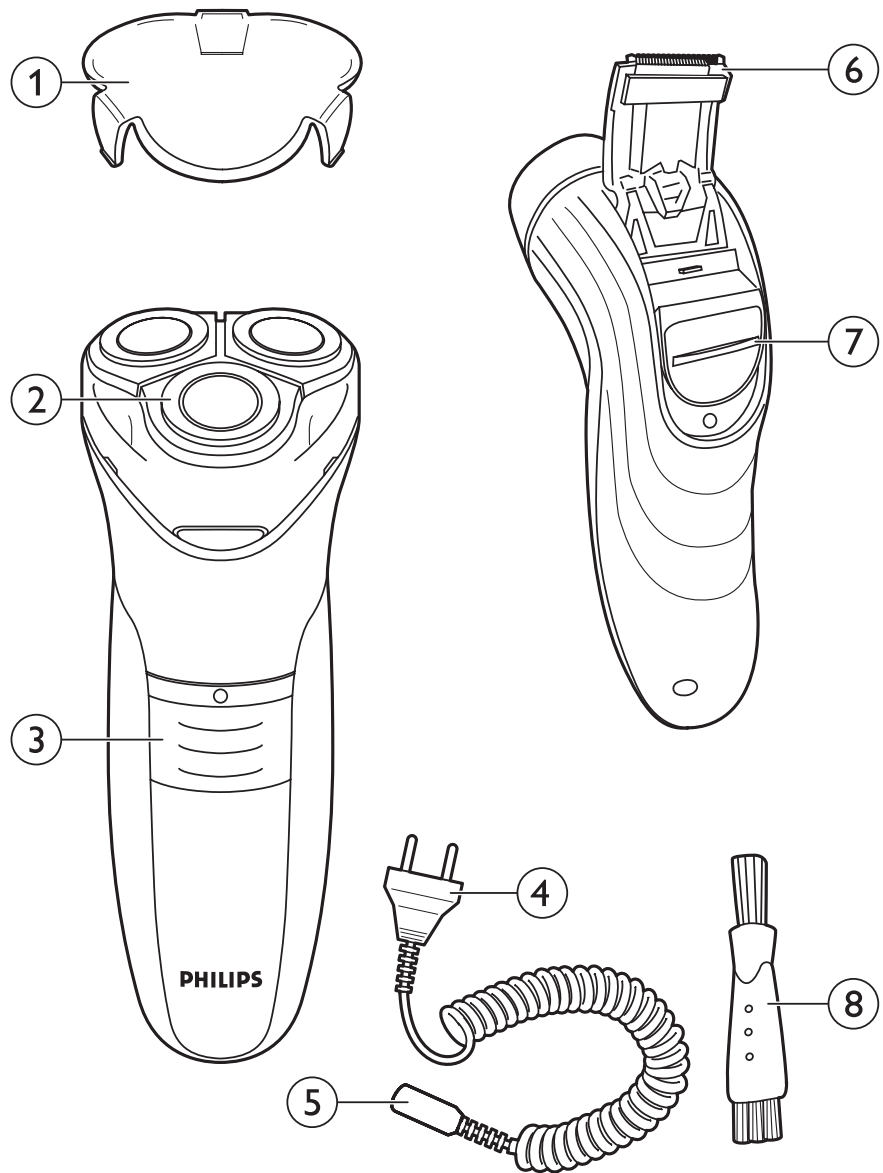
HQ6900 series



User manual

PHILIPS





HQ6946, HQ6940, HQ6906, HQ6900 series

ENGLISH	6
БЪЛГАРСКИ	12
ČEŠTINA	18
EESTI	24
HRVATSKI	30
MAGYAR	36
ҚАЗАҚША	42
LIETUVIŠKAI	48
LATVIEŠU	54
POLSKI	60
ROMÂNĂ	66
РУССКИЙ	72
SLOVENSKY	78
SLOVENŠČINA	84
SRPSKI	90
УКРАЇНСЬКА	96

Introduction

Congratulations on your purchase and welcome to Philips! To fully benefit from the support that Philips offers, register your product at www.philips.com/welcome.

The Close Cut system ensures a close and easy shave every day. For the best result, move the shaving heads over your skin in both straight and circular movements.

What's in the box

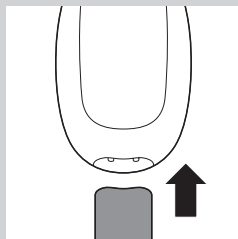
- Shaver
- Protection cap
- Cleaning brush
- Mains cord with plug
- User manual
- Local guarantee leaflet
- World wide guarantee leaflet

General description (Fig. 1)

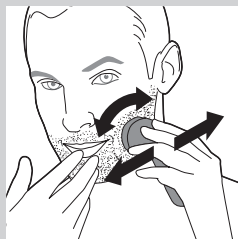
- 1 Protection cap
- 2 Shaving unit
- 3 Shaver on/off slide
- 4 Mains cord with plug
- 5 Appliance plug
- 6 Trimmer (HQ6946, HQ6940 only)
- 7 Trimmer slide (HQ6946, HQ6940 only)
- 8 Cleaning brush

Using the appliance

Shaving



- 1** Put the appliance plug in the shaver.
- 2** Put the mains plug in the wall socket.
- 3** Push the on/off slide upwards to switch on the shaver.

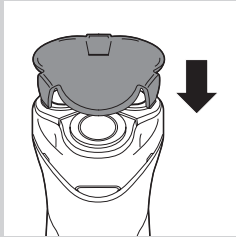


- 4** Move the shaving heads over your skin. Make both straight and circular movements.

Shaving on a dry face gives the best results.

Your skin may need 2 or 3 weeks to get accustomed to the Philips shaving system.

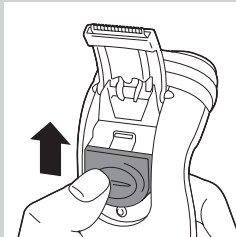
- 5** Push the on/off slide downwards to switch off the shaver.



- 6** Put the protection cap on the shaver every time you have used it, to prevent damage.

Trimming (HQ6946/HQ6940 only)

You can use the trimmer to trim your sideburns and moustache.



- 1** Push the slide upwards to open the trimmer.
The trimmer can be activated while the motor is running.

Cleaning and maintenance

Regular cleaning guarantees better shaving performance.

This appliance is not washable. Never immerse the appliance in water, nor rinse it under the tap.

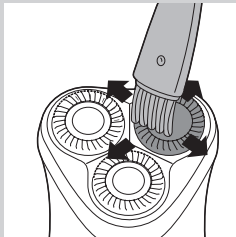
Never use scouring pads, abrasive cleaning agents or aggressive liquids such as petrol or acetone to clean the appliance.

- For easy and optimal cleaning, Philips Shaving Head Cleaning Spray (HQ110) is available. Ask your Philips dealer for information.

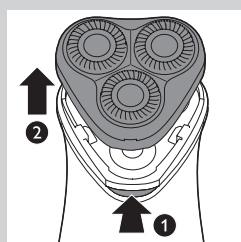
Note: Philips Shaving Head Cleaning Spray may not be available in all countries. Contact the Consumer Care Centre in your country about the availability of this accessory.

You can also clean the shaver in the following way:

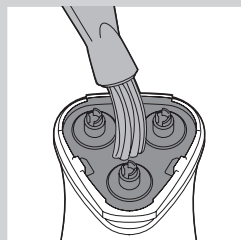
Every week: shaving unit and hair chamber



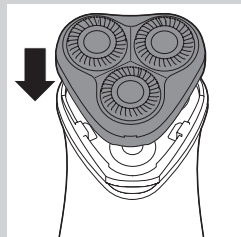
- 1** Switch off the shaver. Remove the mains plug from the wall socket and pull the appliance plug out of the shaver.
- 2** Clean the top of the appliance first. Use the cleaning brush supplied.



3 Press the release button (1) and remove the shaving unit (2).

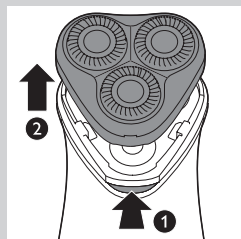


4 Clean the inside of the shaving unit and the hair chamber with the cleaning brush.



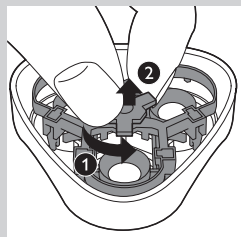
5 Put the shaving unit back onto the shaver.

Every two months: shaving heads

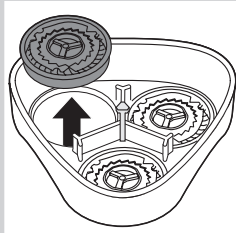


1 Switch off the shaver. Remove the mains plug from the wall socket and pull the appliance plug out of the shaver.

2 Press the release button (1) and remove the shaving unit (2).

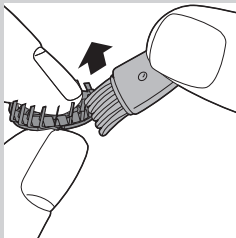


3 Turn the wheel anticlockwise (1) and remove the retaining frame (2).



- 4** Remove the shaving heads (cutters and guards) one by one and clean them with the cleaning brush supplied.

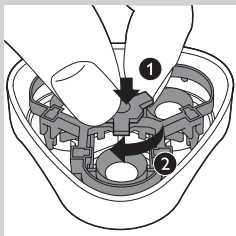
Note: Do not clean more than one cutter and guard at a time, since they are all matching sets. If you accidentally mix up the cutters and guards, it may take several weeks before optimal shaving performance is restored.



- 5** Clean the cutter with the short-bristled side of the cleaning brush. Brush carefully in the direction of the arrow.



- 6** Brush the guard.



- 7** Put the shaving heads back into the shaving unit. Put the retaining frame back into the shaving unit, push it down (1) and turn the wheel clockwise (2).

- 8** Put the shaving unit back onto the shaver.

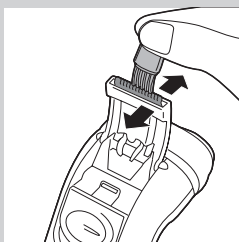
Extra-thorough cleaning

For extra-thorough cleaning, put the shaving heads in a degreasing liquid (e.g. alcohol) every six months. To remove the shaving heads, follow steps 1 to 4 described above. After cleaning, lubricate the central point on the inside of the guards with a drop of sewing machine oil to prevent wear of the shaving heads.

Trimmer (HQ6946/HQ6940 only)

Clean the trimmer every time you have used it.

- 1** Switch off the shaver. Remove the mains plug from the wall socket and pull the appliance plug out of the shaver.



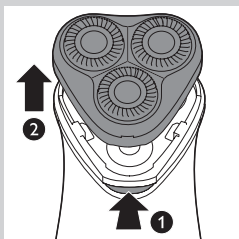
2 Clean the trimmer with the cleaning brush supplied.



Tip: Lubricate the trimmer teeth with a drop of sewing machine oil every six months.

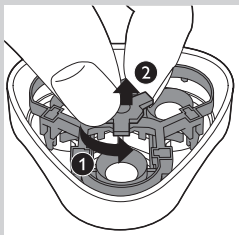
Replacement

Replace the shaving heads every two years for optimal shaving results. Replace damaged or worn shaving heads with HQ56 Philips Shaving Heads only.

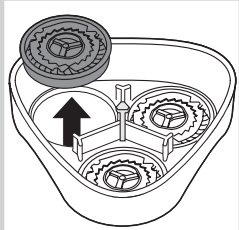


1 Switch off the shaver. Remove the mains plug from the wall socket and pull the appliance plug out of the shaver.

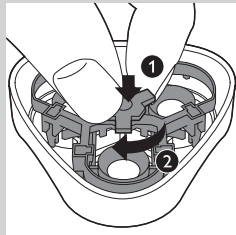
2 Press the release button (1) and remove the shaving unit (2).



3 Turn the wheel anticlockwise (1) and remove the retaining frame (2).



4 Remove the shaving heads and place new ones in the shaving unit.



- 5 Put the retaining frame back into the shaving unit, push it down (1) and turn the wheel clockwise (2).
- 6 Put the shaving unit back onto the shaver.

Troubleshooting

This chapter summarises the most common problems you could encounter with the appliance. If you are unable to solve the problem with the information below, visit www.philips.com/support for a list of frequently asked questions or contact the Consumer Care Centre in your country.

Problem	Possible cause	Solution
Reduced shaving performance.	The shaving heads are dirty. You have not cleaned the shaver well enough or you have not cleaned it for a long time.	Clean the shaver thoroughly before you continue shaving. See chapter 'Cleaning and maintenance'.
	Long hairs obstruct the shaving heads.	Clean the cutters and guards with the cleaning brush supplied. See chapter 'Cleaning and maintenance', section 'Every two months: shaving heads'.
	The shaving heads are damaged or worn.	Replace the shaving heads every 2 years for optimal shaving results. See chapter 'Replacement'.
The shaver does not work when I push the on/off slide upwards.	The shaver is not connected to the mains.	Put the mains plug in the wall socket.
Skin irritation.	Your skin needs time to get used to the Philips shaving system.	Skin irritation during the first 2-3 weeks of use is normal. After this period, the skin irritation usually disappears.