

2.2 OPERATING PROCEDURES

2.2.1 Zeroing

Aimpoint's sights are delivered in a centered position. Normally this means that only small adjustments are necessary, providing that the base(s) are properly aligned.

CAUTION: Do not continue to adjust windage and elevation mechanisms if you encounter resistance.

The elevation Adjustment screw is located on top of the sight, while the windage screw is located on the right or left side, depending on how the sight has been mounted on the weapon. Aimpoint sights can be installed to support either right hand (fig. 2) or left hand (fig. 3) shooters.

- Open Front and Rear Lens covers (9) and (8).
- Turn the Rotary switch (4) clockwise until the red dot has a sufficient intensity to contrast against target.

NOTE: Each click of the Adjustment screws (7) corresponds to a 13 mm movement of the point of impact at 80 meters, (4 mm at 25 meters, 16 mm at 100 meters and 32 mm at 200 meters or 1/4" at 50 yds, 1/2" at 100 yds and 1" at 200 yds).

- Insert adjustment tool (coin, screwdriver, knife) or cartridge casing in Adjustment screw slot (7) and turn as follows:
 - To move the point of impact to the right, turn windage adjustment screw counter clockwise (clockwise if screw located on left side).
 - To move the point of impact to the left, turn windage adjustment screw clockwise (counter clockwise if screw located on left side).
 - To move the point of impact up, turn elevation adjustment screw counter clockwise.
 - To move the point of impact down, turn elevation adjustment screw clockwise.
- Confirm zeroing by firing at least three shots at a zeroing target. Check impact points on zeroing target to confirm accuracy and repeat above procedure if required.
- After initial firing, ensure that the mount and sight are secure.
- Turn Rotary switch (4) to OFF position (counter clockwise).
- Close front and rear Lens cover (9) and (8).

CHAPTER III – OPERATION UNDER EXTREME CONDITIONS

- Extreme heat (moist or dry): No special procedures required.
- Extreme cold: Extreme cold might shorten battery life. Keep spare batteries in your inner pockets to keep them warm.
- Salt air: No special procedures required.
- Sea spray, water, mud and snow: Ensure that the Battery cap (2) and the two Adjustment screw caps (5) are tight before exposing the sight to sea spray, mud, snow or before submersing the sight into water. Hand tighten only. Keep lens covers closed when the sight is not being used. Clean lenses with lens paper/cloth and wipe the sight dry as soon as possible after exposure to water, sea spray, mud or snow.
- Dust storms and sand storms: Keep lens covers closed when the sight is not being used.
- High altitudes: No special procedures required.

CAUTION: The lenses shall never be cleaned with fingers but with lens paper/cloth. If lens paper/cloth is not available:

- To clear away debris (sand, grass etc): blow away the dirt or rinse with clear water.
- To clean lenses: mist up the lenses or rinse with clear water and clean them with a soft piece of cloth.

CHAPTER IV – TROUBLE SHOOTING PROCEDURES

4.1 RED DOT DOES NOT APPEAR

Discharged battery:	Replace Battery (3)
Battery installed incorrectly:	Remove and reinstall Battery (3) with (+) toward Battery cap (2).
Battery is not making good contact:	Clean contact surfaces and reinstall Battery (3).
Defective rotary switch:	Notify dealer/armourer

4.2 IMPOSSIBLE TO ZERO

Adjustment screw is at its limit:	Check alignment of mount to barrel
Impact point is moving:	Check mount stability

CHAPTER V – MAINTENANCE

- This reflex sight does not require any particular maintenance while used under normal conditions.
- Under severe weather conditions please refer to CHAPTER III.
- Keep Lens covers (8) and (9) closed whenever the sight is not in use.
- Warehouse storage: Remove Battery (3) and allow lens surfaces to dry completely (if wet) before closing the Lens covers (8) and (9).
- To clean lenses refer to CAUTION in CHAPTER III.

Aimpoint®

User Manual for Aimpoint CompM2 and Aimpoint CompML2



Aimpoint AB
Jägershillgatan 15
SE- 213 75 Malmö, Sweden
Phone +46 (0)40 671 50 20
Fax +46 (0)40 21 92 38
e-mail: info@aimpoint.se
www.aimpoint.com

Aimpoint Inc.
14103 Mariah Court
Chantilly, VA 20151-2113, USA
Phone +1 703-263-9795
Fax +1 703-263-9463
e-mail: info@aimpoint.com
www.aimpoint.com



THE FUTURE IN SIGHT™

CHAPTER I – PRESENTATION

1.1 PRESENTATION

Aimpoint's Reflex Sights are rugged precision electronic optical red dot sights developed for civilian, military and law enforcement applications.

Aimpoint sights are designed for the "two eyes open" method of sighting, which greatly enhances situational awareness and target acquisition speed. Thanks to the parallax-free design, the dot follows the movement of the user's eye while remaining fixed on the target, eliminating any need for centering. Further, the sight allows for unlimited eye-relief.

The CompM2 is compatible with 1st, 2nd and 3rd generation night vision devices, while the CompML2 is optimized for applications, which do not require night vision compatibility.

1.2 SPECIFICATION

Material – housing:	Extruded, high strength aluminum, anodized
Surface finish:	Hard Anodized, Dark Graphite Grey, matte
Material – lens covers:	Thermoplastic elastomer, black, non-glare
Optical magnification:	1X
Eye relief:	Unlimited, no centering required
Optical coating:	Anti Reflex coating, all surfaces Multi-layer coating for reflection Band Pass coating for NVD* compatibility (CompM2)
Dot size:	4 MOA**
Switch, dot brightness:	CompM2: 10 positions: 4 NVD, 6 daylight of which 1 Extra Bright CompML2: 10 positions: 1 Off, 9 daylight of which 1 Extra Bright
Battery:	One 3 V Lithium battery type 2L76 or DL1/3N
Battery life*** (hours):	1000 – 10.000 h (typically 10 years at CompM2 NVD position)
Length (incl. lens covers):	CompM2 / ML2: 130 mm (5.1")

Width/height:	CompM2 / ML2: 49 mm (1.9")
Weight (incl. lens covers):	CompM2 / ML2: 200 gram (7.1 oz)
Adjustment:	Range ± 2 m at 100 meters, in windage and elevation 1 click = 13 mm at 80 m = 16 mm at 100 m = 1/2" at 100 yds.
Mounting:	One wide ring, 30 mm diameter, or Aimpoint QR Ring
Max temperature range:	-45 °C to +70 °C (-50 °F to +160 °F)
Water resistance:	Submersible to 25 m (80 ft)

1.3 LOCATION AND DESCRIPTION OF MAJOR COMPONENTS

See fig. 1

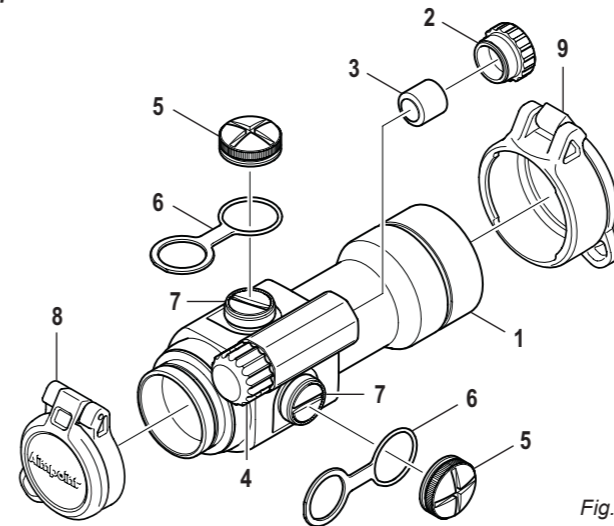
1. Sight
2. Battery Cap
3. Battery (DL1/3N or similar)
4. Rotary Switch
5. Cap Adjustment (2 pcs)
6. Strap (for Cap Adjustment, 2 pcs)
7. Adjustment Screws Windage/Elevation (2 pcs)
8. Lens Cover, rear
9. Lens Cover, front

*NVD: Night Vision Device

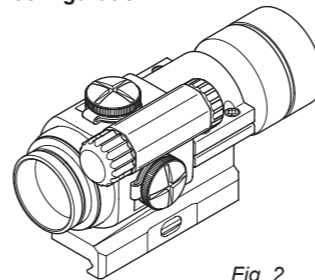
**MOA: Minute Of Angle 1MOA \approx 30 mm at 100 meters \approx 1" at 100 yards

***Average values, depending on brightness setting

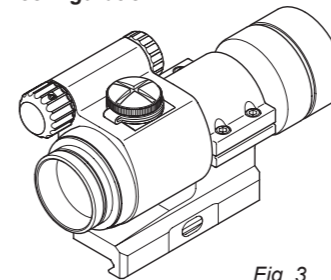
Comp M2/ML2



Right-handed shooter configuration



Left-handed shooter configuration



CHAPTER II – OPERATION UNDER NORMAL CONDITIONS

2.1 ASSEMBLY AND PREPARATION FOR USE

WARNING: Ensure that the weapon is unloaded and the safety selector is in the "safe" position before attempting to install, remove or perform maintenance on the sight.

2.1.1 Installing Battery

- a. Remove battery cap (2) by turning it counter clockwise.
- b. Insert battery (3) with positive (+) end toward cap.

CAUTION: When replacing battery (not necessary when the sight is unused), check that the O-ring is present and not damaged. Failure to do so could result in water leakage into the battery compartment.

- c. Install battery cap (2) by turning clockwise until snug. Hand tighten only. Using tools can damage equipment.
- d. Verify that the red dot is present by turning the rotary switch clockwise.

2.1.2 Installing Ring and Sight on the weapon

Aimpoint's sights are designed for installation on most types of weapons. If your weapon does not have or support an appropriate base(s), please consult your dealer, gunsmith or other qualified source.

- a. Assemble the sight to the weapon by using Aimpoint's wide 30 mm ring or QR-mount. If other standard 30 mm rings are used, make sure that the ring(s) covers a length of minimum 25 mm or 1" (two standard rings could possibly be used).
- b. Ensure that the sight is correctly positioned for right or left hand shooting. (Aimpoint sights can be installed to support either right hand (fig 2) or left hand (fig 3) shooters.)
- c. When using lens covers (8 & 9), ensure that they are correctly positioned and can be opened.

NOTE: make sure that you have space between the bottom front part of the sight and the top of the base/weapon.

- d) Finally, make sure that all screws are firmly tightened around the sight.
- e) Complete the zeroing (2.2.1).