

USER MANUAL



**ITUT-300
USB TURNTABLE**

Table of Contents

Important Safety Instructions-----	Page 2
Precautions-----	Page 4
Before Use-----	Page 5
Location of Parts-----	Page 6
Preparation for Use-----	Page 6
How to Replace the Stylus-----	Page 7
Listening to a Record-----	Page 8
Audacity Software Introduction-----	Page 9
Audacity Installation-----	Page 12
Configuring Audacity for Windows--	Page 16
Audacity Control Buttons-----	Page 17
Audacity Preferences-----	Page 18

Preparing to Export and Save Files-Page	20
Export and Save Files-----	Page 23
Recording Operation Steps-----	Page 25
Dividing Tracks-----	Page 26
Configuring Audacity for Mac-----	Page 30
Audacity Control Buttons-----	Page 31
Audacity Preferences-----	Page 32
Select the recording device-----	Page 33
To set the Smart Recording-----	Page 34
Export and Save Files-----	Page 35
Troubleshooting-----	Page 37
Specifications-----	Page 37

PART I: USB TURNTABLE

IMPORTANT SAFETY INSTRUCTIONS FOR AUDIO PRODUCTS-READ THOROUGHLY

When using electrical products, basic precautions should always be followed including:

1. **Read Instructions**-All the safety and operating instructions should be read before the product is operated.
2. **Retain Instructions**-The safety and operating instructions should be retained for future reference.
3. **Heed Instructions**-All warnings on the product and in the operating instructions should be adhered to.
4. **Follow Instructions**-All operating and user instructions should be followed.
5. **Cleaning**-Unplug this product from the wall outlet before cleaning. Do not use liquid cleaners or aerosol cleaners. Use a damp cloth for cleaning.
6. **Attachments**-Do not use attachments not recommended by the product manufacturer as they may cause hazards.
7. **Water and Moisture**-Do not use this product near water-for example, near a bath tub, wash bowl, kitchen sink, or laundry tub, in a wet basement, or near a swimming pool, etc.
8. **Accessories**-Do not place this product on an unstable surface. The product may fall, causing serious injury to a child or adult and serious damage to the product. Use only with a stand, bracket, or table recommended by the manufacturer, or sold with the product. Any mounting of the product should follow the manufacturer's instructions, and should use a mounting accessory recommended by the manufacturer.
9. **Transporting**-This product should be moved with care to avoid damage or injury.
10. **Ventilation**-Slots and openings in the cabinet are provided for ventilation, to ensure reliable operation of the product and to protect it from overheating. These openings must not be blocked or covered. The openings should never be blocked by placing the product on a bed, sofa, rug, or similar surface. This product should not be placed in a built-in installation such as a bookcase or rack unless proper ventilation is provided or the manufacturer's instructions have been adhered to.
11. **Power Sources**-This product should be operated only from the type of power source indicated on the marking label. If you are not sure of the type of power supply to your home, consult your product dealer or local power company. For products intended to operate from battery power, or other sources, refer to the operation instructions.
12. **Power-Cord Protection**- Power-supply cords should be routed so that they are not likely to be trapped in any way.



13. **Lightning**-For added protection for this product during a lightning storm, or when it is left unattended and unused for long periods of time, unplug it from the wall outlet and disconnect the antenna or cable system. This will prevent damage to the product due to lightning and power-line surges.
14. **Power Lines**-An outside antenna system should not be located in the vicinity of overhead power lines or other electric light or power circuits, or where it can fall into such power lines or circuits. When installing an outside antenna system, extreme care should be taken to keep from touching such power lines or circuits as contact with them might be fatal.
15. **Overloading**-Do not overload wall outlets, extension cords, or integral convenience receptacles as this can result in a risk of fire or electric shock.
16. **Object and Liquid Entry**-Never push objects of any kind into this product through openings as they may touch dangerous voltage points or short-out parts that could result in a fire or electric shock. Never spill liquid of any kind on the product.
17. **Servicing**-Do not attempt to service this product yourself as opening or removing covers may expose you to dangerous voltage or other hazards. Refer all servicing to qualified service personnel.
18. **Damage Requiring Service**-Unplug this product from the wall outlet and refer servicing to qualified service personnel under the following conditions:
 - a. If the power-supply cord or plug is damaged.
 - b. If liquid has spilled, or objects have fallen into the product.
 - c. If the product has been exposed to rain or water.
 - d. If the product does not operate normally by following the operating instructions. Adjust only those controls that are covered by the operating instructions, as an improper adjustment of other controls may result in damage and will often require extensive work by a qualified technician to restore the product to its normal operation.
 - e. If the product has been dropped or damaged in any way, and the product exhibits a distinct change in performance-this indicates a need for service.
19. **Replacement Parts**-When replacement parts are required, be sure the service technician has used replacement parts specified by the manufacturer or have the same characteristics as the original part. Unauthorized substitutions may result in fire, electric shock, or other hazards.
20. **Safety Check**-Upon completion of any service or repairs to this product, ask the service technician to perform safety checks to determine that the product is in proper operating condition.
21. **Wall or Ceiling Mounting**-The product should be mounted to a wall or ceiling only as recommended by the manufacturer.
22. **Heat**-The product should be situated away from heat sources such as radiators, heat registers, stoves or other products (including amplifiers) that produce heat.

Precautions

Safety Information

CAUTION:

1. In order to shut off the power of this product completely, unplug the power cord from the wall outlet. Be sure to unplug the unit if you do not intend to use it for an extended period of time, such as a vacation.
2. Use of controls, adjustments and performance of procedures other than those specified herein may result in hazardous radiation exposure.
3. If this product develops trouble, contact a qualified service center, and do not use the product in defective state.

Safety Precautions

WARNING:

To reduce the risk of fire or electric shock, do not expose this appliance to rain or moisture.

CAUTION

RISKS OF ELECTRIC SHOCK- DO NOT OPEN!

To reduce the risk of electric shock, do not remove cover or back.

No user serviceable parts inside. Refer servicing to qualified service personnel.



The lightning flash with arrowhead symbol, within an equilateral triangle, is intended to alert user to the presence of non-insulated “dangerous voltage” within the product’s enclosure that may be of sufficient magnitude to constitute risk of electric shock to persons.



The exclamation point within an equilateral triangle is intended to alert user to the presence of important operating and maintenance (servicing) instructions in the literature accompanying the appliance.

(See markings on the back of the unit)

CAUTION:

To prevent electric shock, match wide blade of plug to wide slot, fully insert.



Instructions shall caution users that modifications not approved by the party responsible for compliance could void user's authority to operate the equipment.

The following or equivalent as appropriate:

“NOTE: This equipment has been tested and found to comply with the limits for a Class B digital device, pursuant to Part 15 of the FCC Rules. These limits are designed to provide reasonable protection against harmful interference in a residential installation. This equipment generates, uses and can radiate radio frequency energy and, if not installed and used in accordance with the instructions, may cause harmful interference to radio communications. However, there is no guarantee that interference will not occur in a particular installation.

If this equipment does cause harmful interference to radio or television reception, which can be determined by turning the equipment off and on, the user is encouraged to try to correct the interference by one or more of the following measures:

- Reorient or relocate the receiving antenna.
- Increase the separation between the equipment and receiver.
- Connect the equipment into an outlet on a circuit different from that to which the receiver is connected.
- Consult the dealer or an experienced radio/TV technician for help.”

Statement that the product complies with Part 15 (i.e. “This device complies with Part 15 of the FCC Rules. Operation is subject to the following two conditions: (1) This device may not cause harmful interference, and (2) this device must accept any interference received, including interference that may cause undesired operation.”

CALIFORNIA PROP 65 WARNING

“WARNING” This product contains a chemicals known to the State of California to cause birth defects or other reproductive harm. For more information on these regulations and a list of chemicals, log on the following website address :

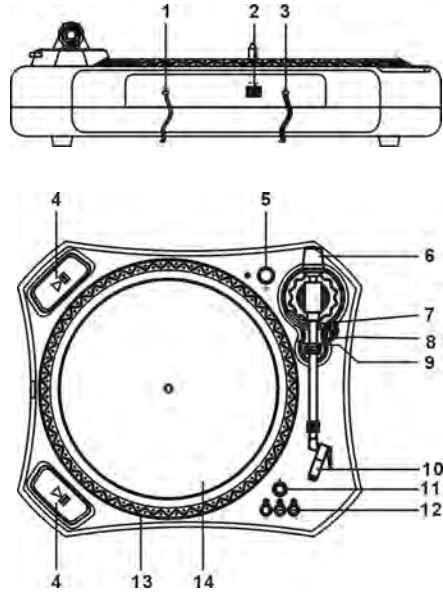
<http://www.oehha.ca.gov/prop65.html>

Before Use

1. Choose unit installation location carefully. Avoid placing it in direct sunlight or close to a source of heat. Also avoid locations subject to vibrations and excessive dust, cold or moisture. Keep away from sources that hum, such as transformers or motors.
2. Do not open the cabinet as this might result in damage to the circuitry or electrical shock. If a foreign object should get into the set, contact your dealer.
3. Be sure not to handle stylus (needle) with dirty fingers.
4. When removing the power plug from the wall outlet, always pull directly on the plug, never pull the cord.
5. Do not attempt to clean the unit with chemical solvents as this might damage the finish. Use a clean, dry cloth.
6. In order to shut off the power to this product completely, unplug the power cord from the wall outlet. Be sure to unplug the unit if you do not intend to use it for an extended period of time, such as a vacation.
7. Keep this manual in a safe place for future reference.

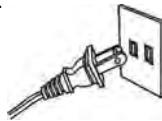
Location of parts

1. RCA Line
2. USB Socket
3. AC Line
4. PLAY/PAUSE Button
5. POWER Button
6. Balance Weight
7. Tone Arm
8. Security Tie
9. Tone Arm Holder
10. Stylus
11. Eject Button
12. Speed Control Button
13. Turntable
14. Rubber Mat

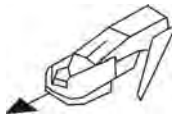


Preparation for Use

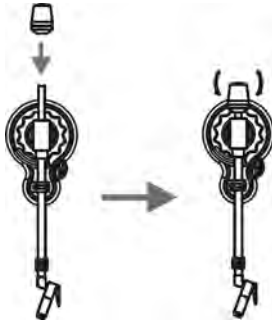
1. Connect the AC power cord to AC outlet.



2. Remove white protective needle cover by gently pulling towards front of unit.



3. Screwed the balance weight on the tone arm through the center, please refer to below instruction.



If the sound is distortion, please turning the balance weight clockwise or counterclockwise.

4. Put the rubber mat on the turntable.

5. Release TONE ARM REST by gently pushing hold-down clip to the right. This will unlock tone arm from its arm rest. Re-lock the hold-down clip when moving the unit to another location.

How to Replace the Turntable Stylus (Needle)

Removing old stylus

1. Set a screwdriver at the tip of the stylus and push down in the direction "A".
2. Remove the stylus by pulling it forward and down.



Installing a new stylus

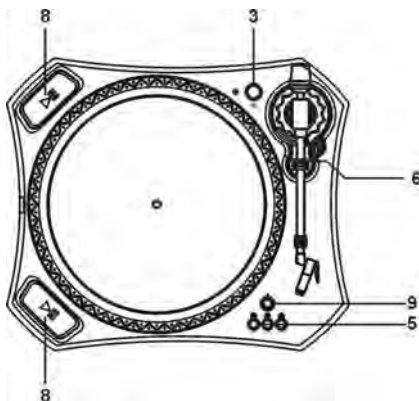
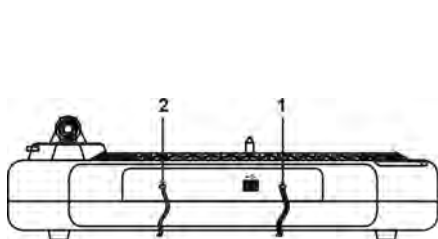
1. Hold the tip of the stylus and insert the other edge by pressing in the direction "B".
2. Push up in the direction "C" until it locks at the tip.



****Note:** For information regarding stores that carry replacement needles for your ITUT-300 unit, please contact us by sending an email to: support@ithomeproducts.com or call toll-free 1-877-483-2497.

Listening to a Record

1. Connect the AC power cord to AC outlet.
2. Plug the 2 ends of the LINE OUT Cable into the auxiliary input (Aux) on your TV, home entertainment receiver or other music systems. Be sure that the red RCA Cable is inserted into the red jack and the white RCA Cable is inserted into the white jack.
3. Press the POWER button on the unit. Also turn the power on the unit that you connected with this turntable.
4. Put a record onto the turntable. When playing a 45rpm record, remember to use the adapter packed in the polybag along with the manual.
5. Select player speed (33-1/3, 45 OR 78 rpm) according to the record you are playing.
6. Remove the tone arm-rest holder, lift the que-lever and move the tone arm gently to the desired position over the record. Lower the que-lever slowly and record will start to play.
7. Adjust the volume on your auxiliary source to control the volume of the music.
8. Press the PLAY button to continue playing.
9. When the music playing is finished and tone-arm reaches the end of the record, the tone-arm will return back to the arm-rest automatically. Or you can press the eject button when playing the record and the tone arm will lift up from the record and automatically return to the arm-rest.
10. Remember to unplug the plug when not playing the unit for extended periods of time.



PART II: Audacity Software



The provided CD disc contains the following software:

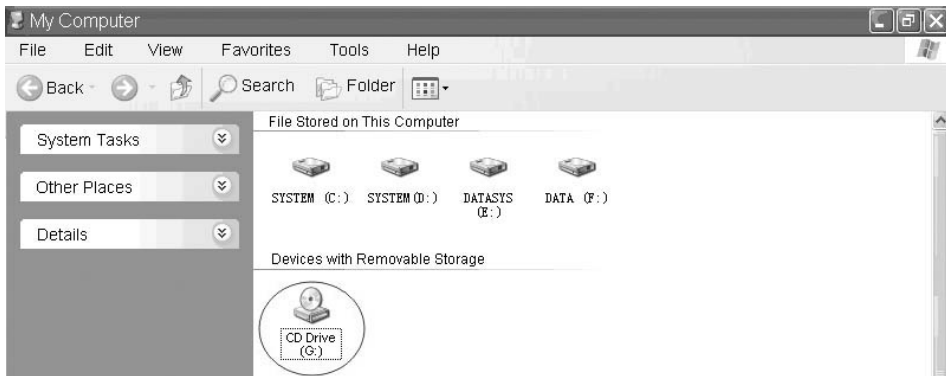
- (1) audacity-src-1.2.6----- For source codes
- (2) Audacity_for_MAC-----For Macintosh
- (3) Audacity_for_WIN-----For Windows
- (4) AUTORUN.INF
- (5) The GNU General Public License.html

The software is compatible with Window 98, 2000, ME, XP, VISTA and Macintosh.

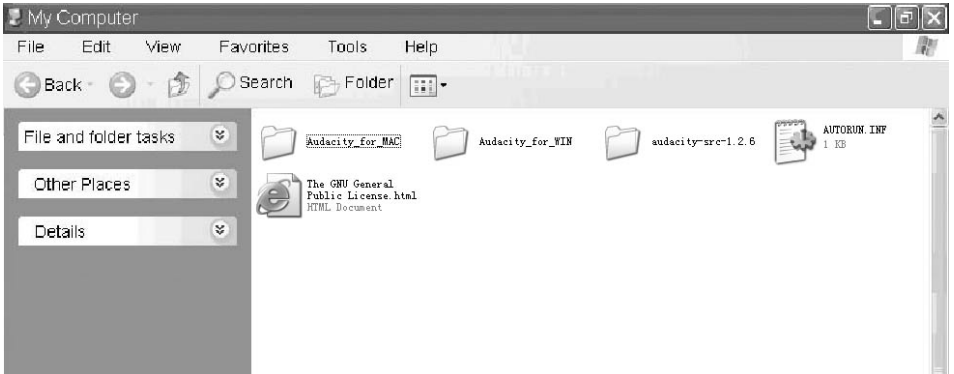
Audacity Installation and USB Connection

Connect the USB cable to the turntable and into your computer. Connect the AC cord of turntable. Press Power button to turn on the turntable.

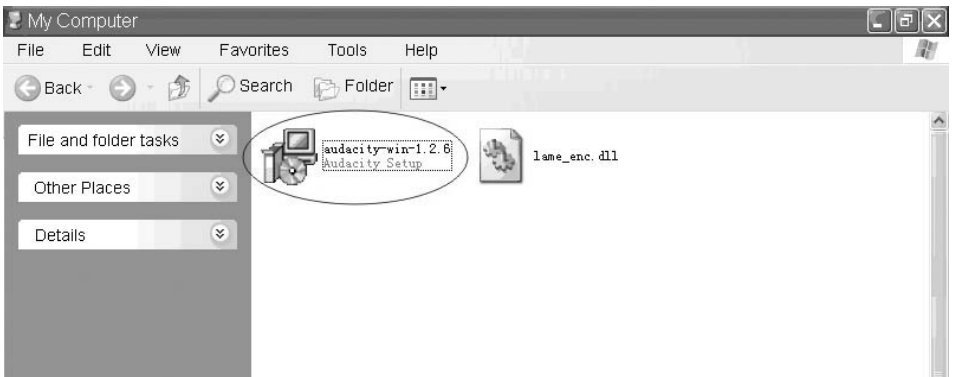
1. Please insert the Audacity software disk that comes with your unit. Go to My Computer and double click the CD ROM Drive.



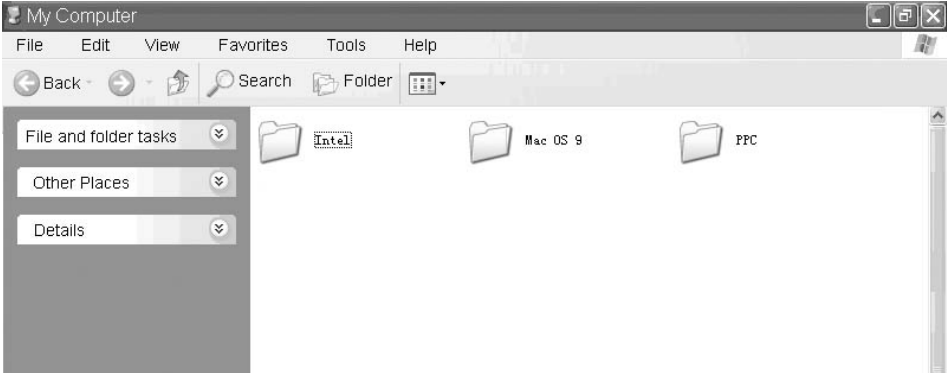
2. There are five folders in the Audacity disk. Select **Audacity_for_WIN** for Windows system, and select **Audacity_for_MAC** for Macintosh system.



3. Double click the **Audacity_for_WIN** for Windows system, and double click the **audacity-win-1.2.6** to install the audacity software.



4. Double click the **Audacity_for_MAC** for Macintosh system. There are three folders will appear as below. If your computer is Mac OS X system (**Intel CPU**), please enter the **Intel** folder to install the audacity software; If your computer is Mac OS 9 system, please enter the **Mac OS 9** folder to install the audacity software; If your computer is Mac OS X system (**Power PC CPU**), please enter the **PPC** folder to install the audacity software.

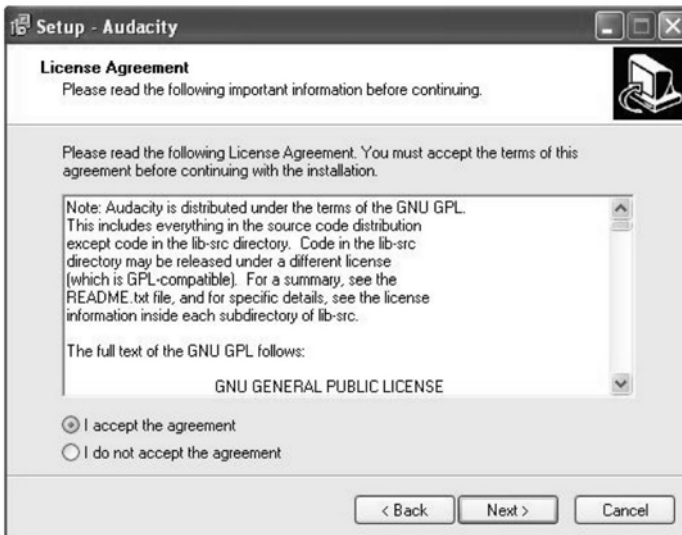


Installing the Audacity Software

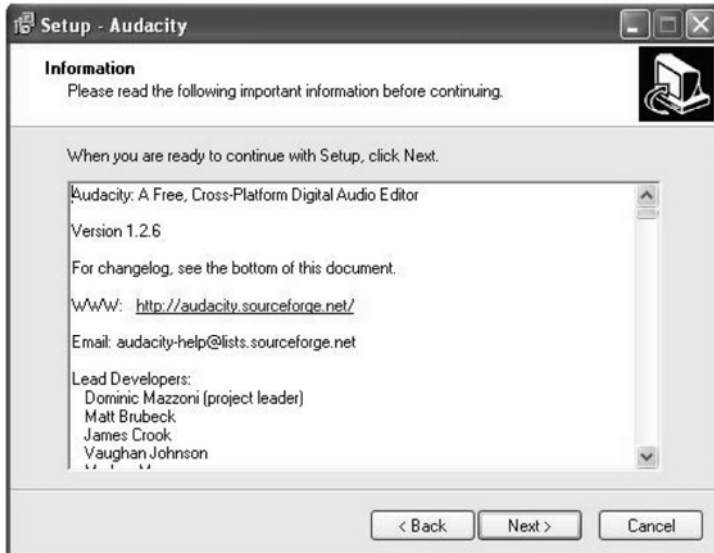
1. The Audacity Setup Wizard will appear. Click on Next to install the software.

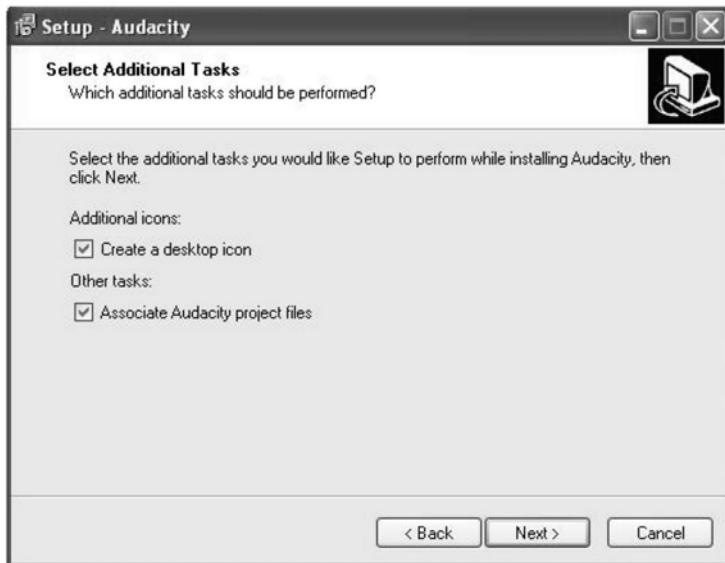


2. Click on "I accept the agreement" and click on Next.



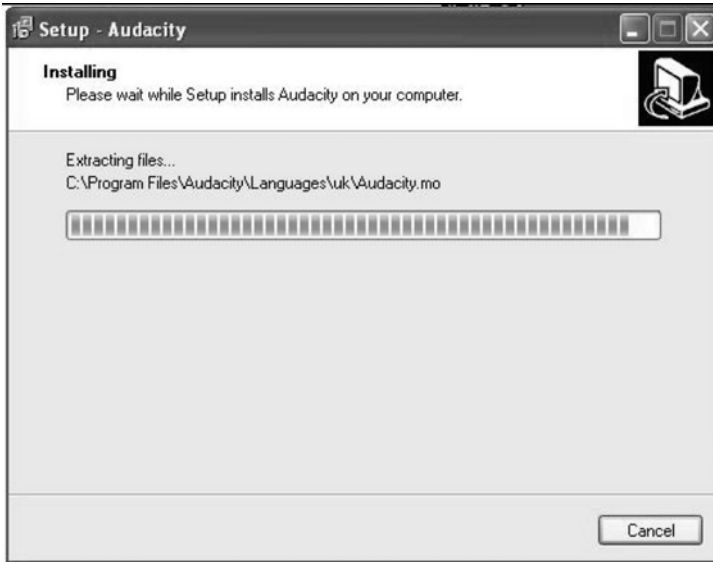
3. Continue to click on the Next buttons.





4. Click on the Install button to start installation.





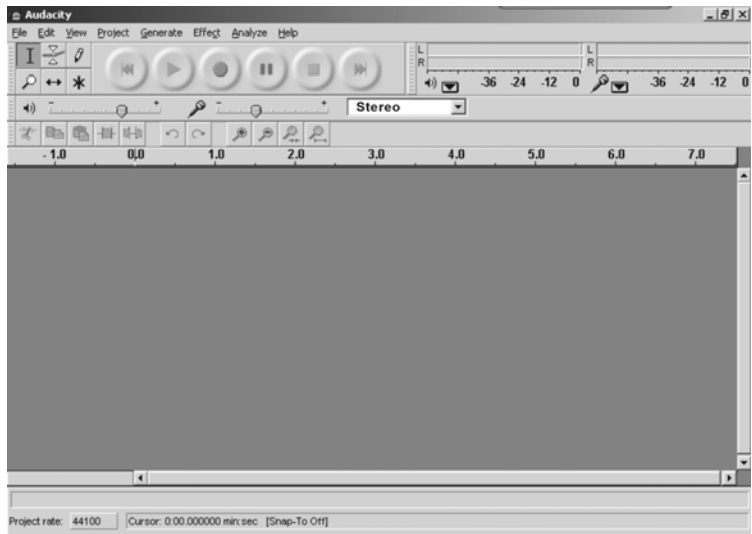
5. Click on Finish to complete installation.



6. You can now open the Audacity software and start recording your files.
(For additional information, visit the Audacity website at <http://audacity.sourceforge.net>)

Configuring Audacity for Microsoft Windows







Audacity Interface

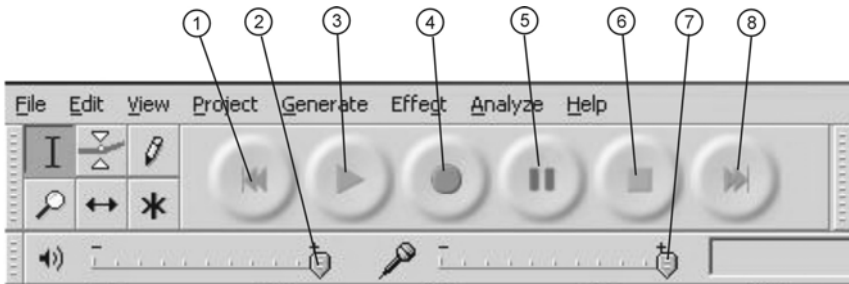


Audacity Interface---Settings and controls.

Audacity Control Buttons

Using the attribute controls button at the top of the screen to go to beginning, Play, Record, Pause, Stop and End. Use the File, Edit, View, Project, Generate, Effect and Analyze menus to Save, Export, and edit the music.

1. Click the () button to skip to start;
2. Adjust the output volume.
3. Click the () button to play;
4. Click the () button to record;
5. Click the () button to pause the recording;
6. Click the () button to stop the recording;
7. Adjust the input volume.
8. Click the () button to skip to end;

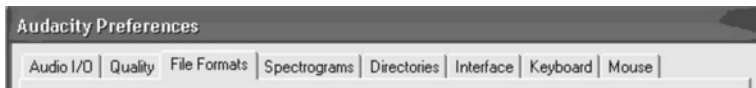


Audacity Preferences

Click the “Edit” on the Audacity interface, select “Preferences”.

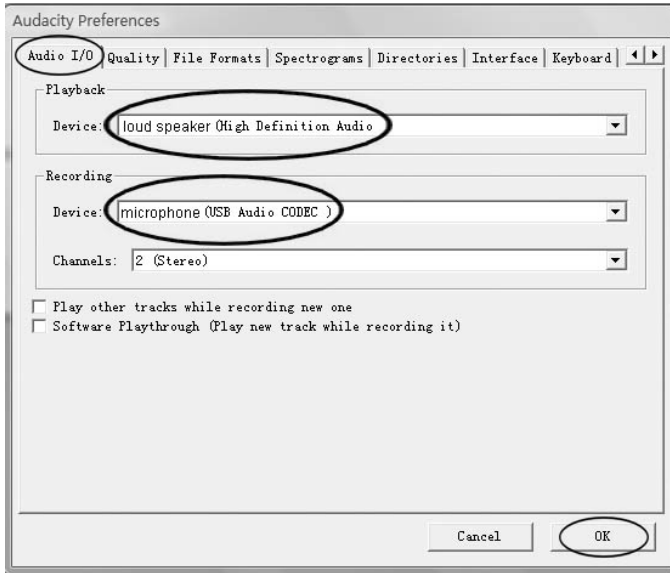


- The screen will open up Audacity Preferences. You can see the Audio I/O, Quality, File Formats, Spectrograms, Directories, Interface, Keyboard and Mouse in the Audacity preference interface.

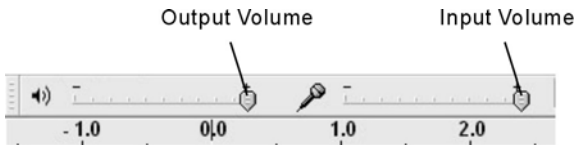


Select the recording device: microphone (USB Audio CODEC)

- Click the “Audio I/O” at the Audacity Preferences interface.
- Click the “Device” and select “microphone (USB Audio CODEC)”.
- Click the “Channels” and select 2 (stereo).
- Click the “OK”.
- Note: If you couldn't find the " microphone (USB Audio CODEC) " from the Device list, close the Audacity Software and re-open then try again.



4. Adjust the output and input volume.

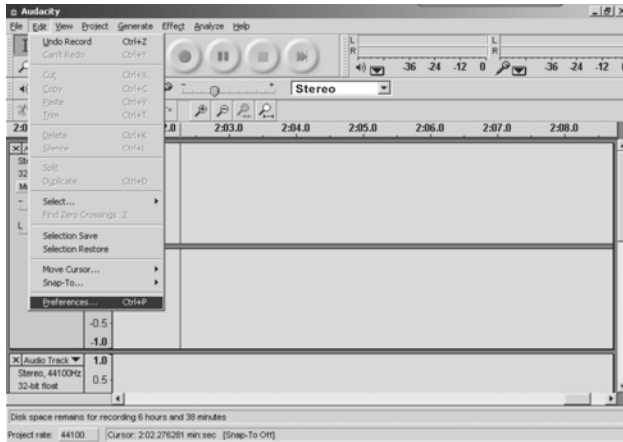


NOTE: Because of the variation of different operation system, the input volume control may not work on some individual Windows versions. Windows Vista is recommended to ensure the input volume control working properly.

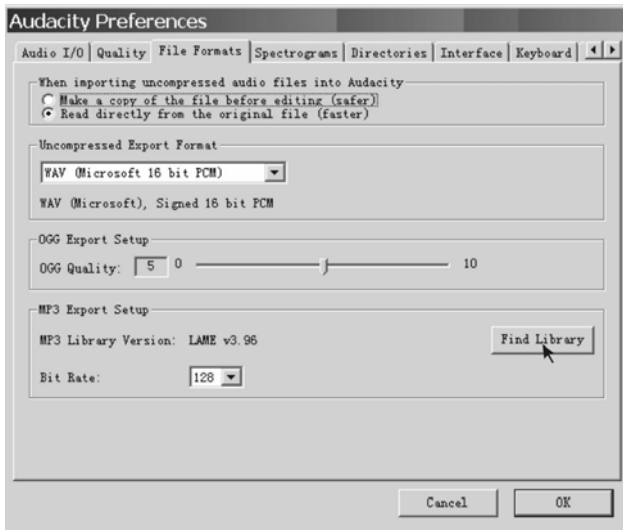
Preparing to Export and Save For MP3 Formats

Prepare for MP3 Export--- (Additional software “lame_enc.dll” needs to be installed.)

1. Please make sure that the Audacity disc is still inserted in your computer.
2. Click the “Edit” Tab on the Audacity interface, select “Preferences”.



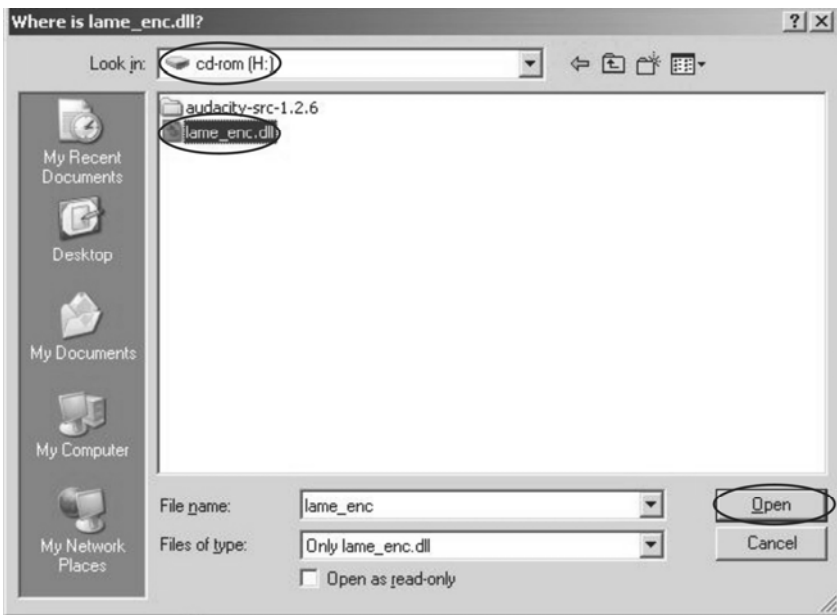
3. Select the File Formats Tab and click on the Find Library Button.



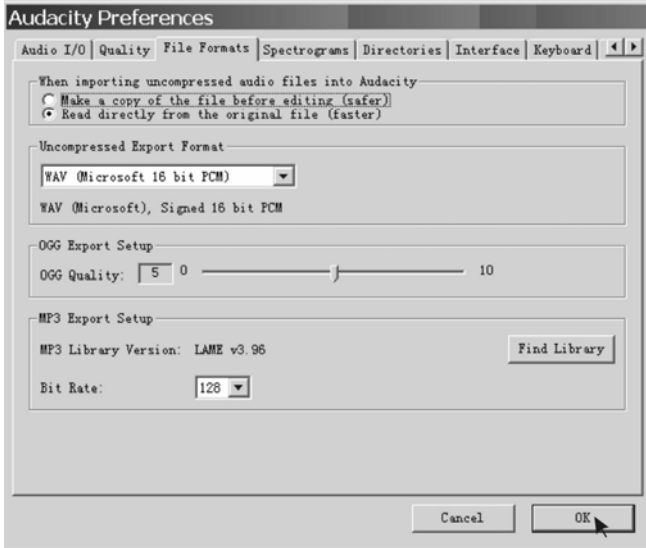
4. A dialog box will appear. Click "Yes".



5. Another box appears to locate the "CD ROM". You will find the "lame_enc.dll" software. Click the software then click Open.





6. Click on the OK Button.



Now the MP3 software set up is complete and you may proceed with the recording and exporting to MP3 format.

Export and Save For WAV, Ogg, or MP3 Formats (After Recording is Completed)

- When the song is finished, click the () on the screen. Then press the “STOP” button on the turntable.
- You have a music download on your computer now. But the music needs to be converted to WAV, Ogg, or MP3 formats before exporting.
- You may play back the song through your computer.
- Simply click the () to play.
- NOTE: You may visit the Audacity website at <http://audacity.sourceforge.net>. For more detailed information and operation, etc.

1. Click the file tab on the audacity interface. Select “Export as WAV” or “Export as Ogg”.

Export As WAV



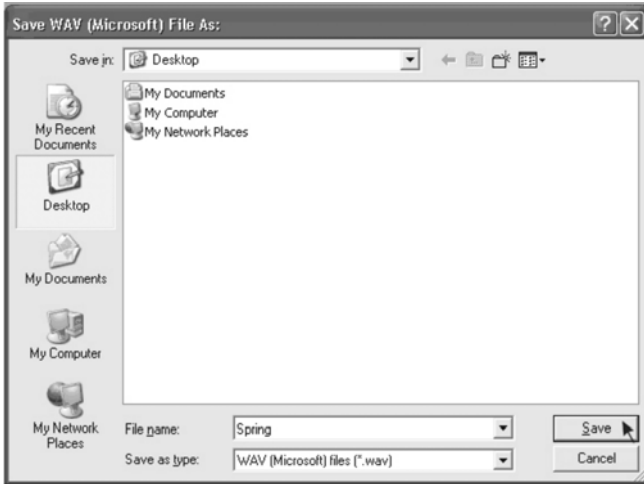
Export As Ogg



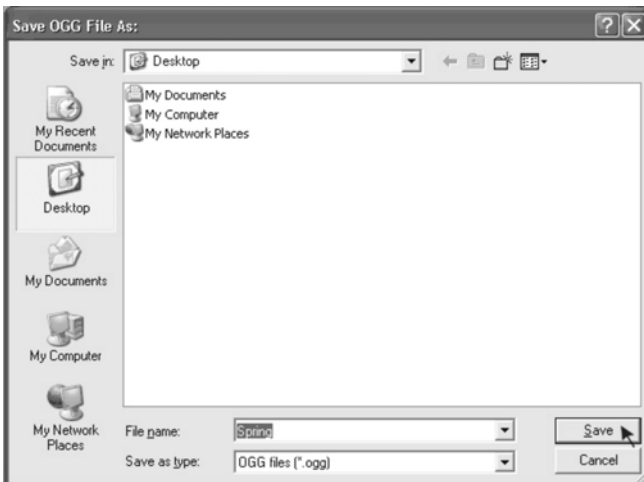
Follow the same steps as above for “Export As MP3”.

2. Once you have chosen to which file format recording should be exported, the interface below appears. Here you may provide the file name and the location where it will be saved, ie. desktop. Then click "Save".

Save as WAV






Save as Ogg




Follow the same steps as above for "Save as MP3".

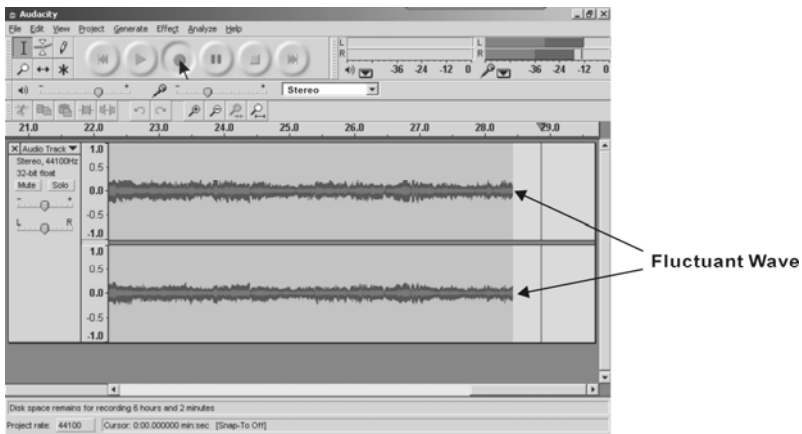
Recording Operation

To download music into computer:

1. Place the record on the turntable.
2. Move the tone-arm over to the record to start playing..
3. Click the Record () button to start recording. The waves (top and bottom) will show on the interface.
4. At end of song, click "Pause" () button on computer and press Stop button on turntable. For the next song, replace the album or move tone-arm to another desired song. Press Play button on turntable to start playing the next song. Immediately press "Pause" () button on computer and downloading will continue.
5. Repeat steps 3 and 4 until you have finished downloading.

NOTE: Do not click "Stop" button on computer while continuously downloading songs. Remember to click "Pause" in between your desired songs. Press "Stop" on computer only when all your desired songs have been downloaded.


After you have finished downloading, you may play back the songs through your computer. In Stop Mode, simply click the () button. NOTE: You cannot hear music during the recording process.



Dividing Tracks

Note: Follow the previous instructions to download the songs but DO NOT click the “Stop” button when the first song is finished. Click the “Pause” button on computer. For the next song, replace the album or move tone-arm to another desired song. Click the “Pause” button to continue the download. Only click the “Stop” button when you have finished downloading into computer.

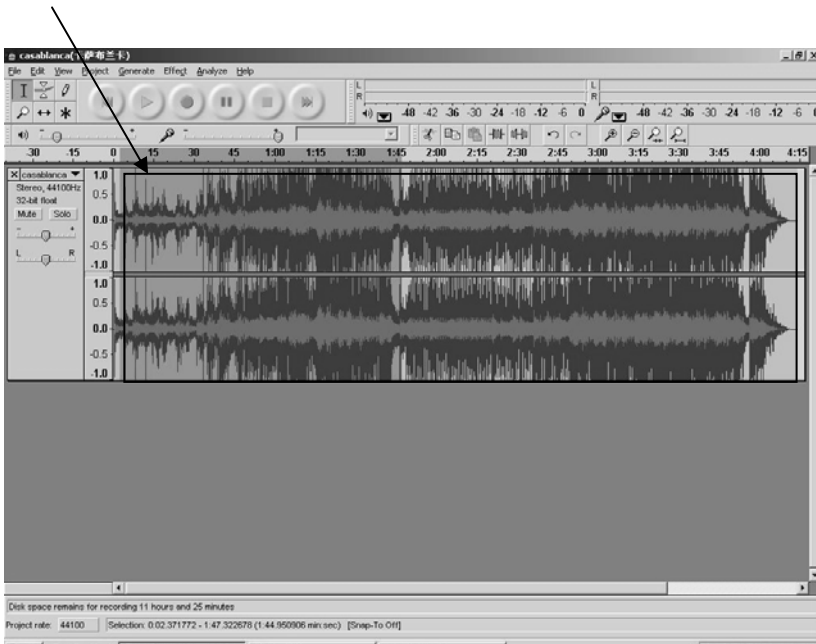
When your downloading is completed:

1. Press () button to return to the beginning of the first song.
2. For example: You have 2 songs downloaded (before exporting). The duration of the first song is from 0:00 – 1:45 / the duration of the second song is from 1:45 – 4:00. (See time bar directly above waves in interface below.)



(Suggestion: You can also write down the duration of time each song takes to download while it is playing by watching the wavelengths.)

2. Move cursor to the wave graphic area, left click mouse and hold then drag from left to right. You can see the time bar color changing to gray (highlighted). Release the mouse when the highlighted time bar has reached 1:45 (end of first song).

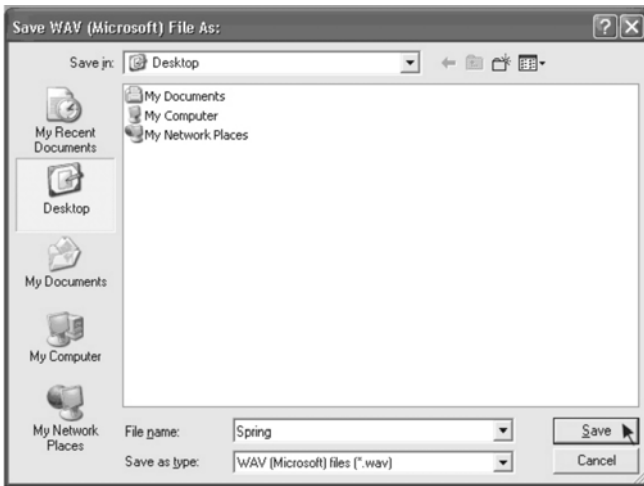


3. Click "file" tab then select "EXPORT SELECTION AS WAV, Ogg, OR MP3".

4. The window will pop up a dialog box for you to put the song title ("File name"), where you want to save it ("Save in"), and file format ("Save as type").

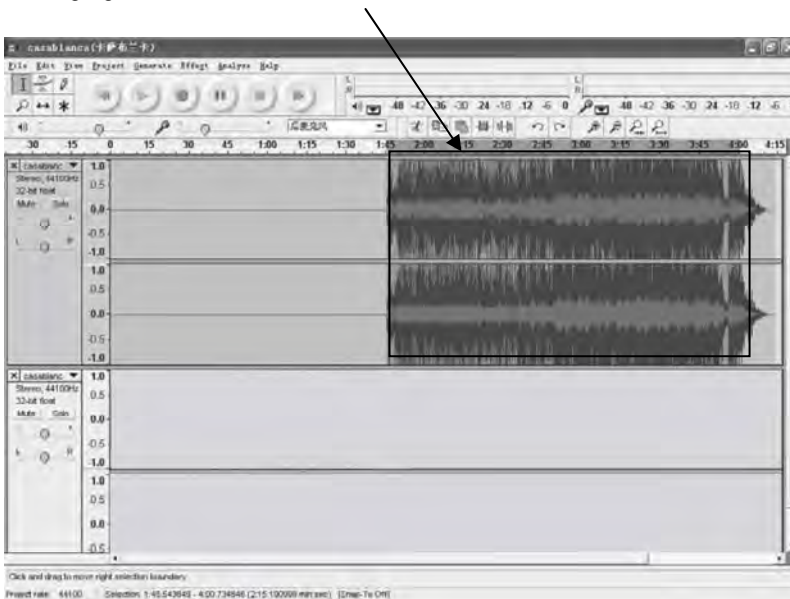
5. Click "Save" and the first song from 0:00-1:45 is saved on the computer.

See interface example below, saved as WAV format:



Second song to be divided and saved:

1. Move cursor to the wave graphic area at 1:45 (beginning of 2nd song). Left click mouse and hold then drag from left to right until you reach 4:00 (end of 2nd song). You can see the area from 1:45 to 4:00 highlighted.



2. Click “file” tab then select “EXPORT SELECTION AS WAV, Ogg, OR MP3”.
3. Follow Steps 2, 3 and 4 (above) to divide songs, one-by-one.

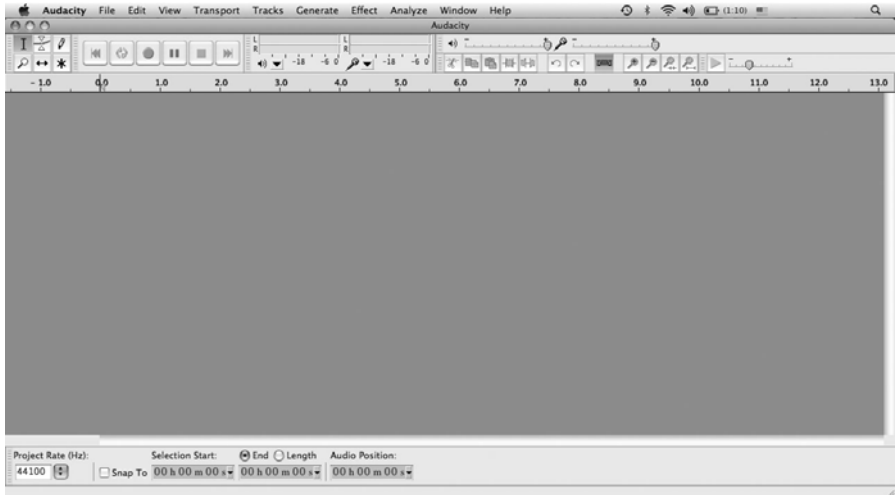
TO TITLE ADDITIONAL SONGS (for MP3 format only)

During “EXPORT SELECTION AS MP3 “, the software only provides one time to title the song being saved. All subsequent songs being divided from the same track are with the same title. To change the titles, follow steps below:

1. Right click on the Music file which will show all its contents.
- 2 .Select “Properties”, then click on “Summary”.
3. Click on “Title”, and then change it to your desired title.

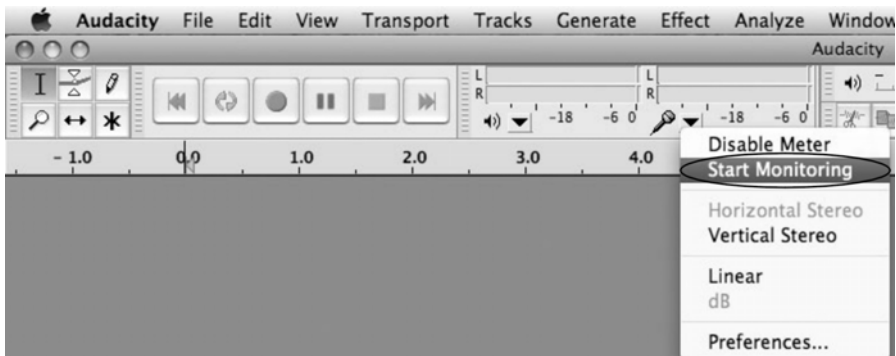
Configuring Audacity for Mac

Audacity Interface for Mac








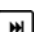
Audacity Interface---Settings and controls.

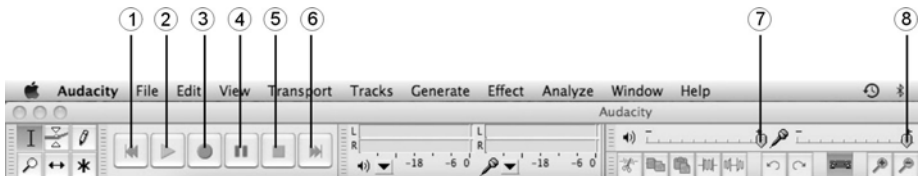
At the top of the main Audacity window, to the right of the play control buttons, you will see the input and output level meters (labeled L and R). Under the output level meter, is an icon that looks like a microphone. Next to the microphone is a black arrow that points down. Click this arrow and select **Start Monitor**. (If you don't see the input and output level meters, open your Preferences again as described above.)



Audacity Control Buttons

Using the attribute controls button at the top of the screen to go to beginning, Play, Record, Pause, Stop and End. Use the File, Edit, View, Project, Generate, Effect and Analyze menus to Save, Export, and edit the music.

1. Click the () button to skip to start;
2. Click the () button to play;
3. Click the () button to record;
4. Click the () button to pause the recording;
5. Click the () button to stop the recording;
6. Click the () button to skip to end;
7. Adjust the output volume.
8. Adjust the input volume.

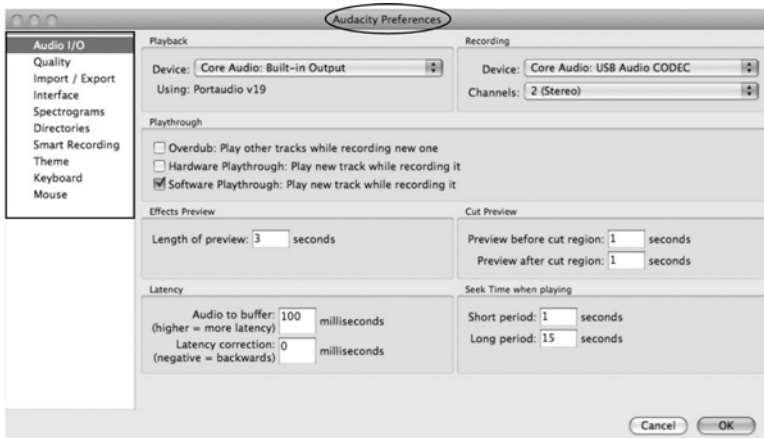


Audacity Preferences

Click the “Audacity” on the Audacity interface, select “Preferences”.

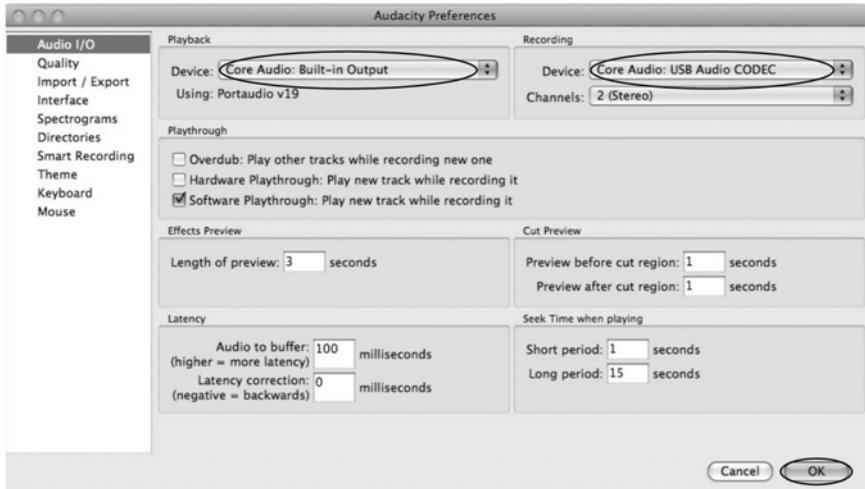


- The screen will open up Audacity Preferences. You can see the Audio I/O, Quality, Import/Export, Interface, Spectrograms, Directories, Smart Recording, Theme, Keyboard and Mouse.



Select the recording device: Core Audio (USB Audio CODEC)

- Click the “Audio I/O” at the Audacity Preferences interface.
- Click the “Device” and select “Core Audio (USB Audio CODEC)”.
- Click the “Channels” and select 2 (stereo).
- Click the “OK”.
- Note: If you couldn't find the " Core Audio (USB Audio CODEC) " from the Device list, close the Audacity Software and re-open then try again or insure the turntable is connect to the computer.

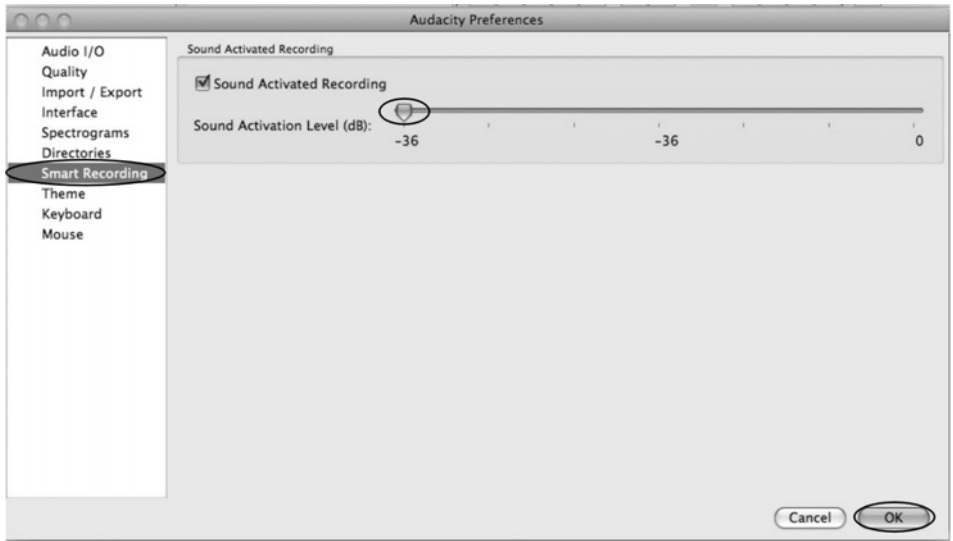


Under the **Quality** tab, set the **Default Sample Format** to 16 bit. Select **OK** to save your setting and close the preferences window.

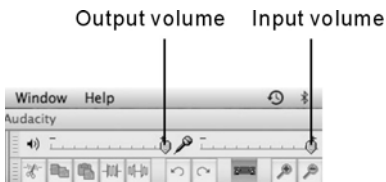


To set the Smart Recording

To select the **Smart Recording** in the Audacity Preferences interface, and set the **Sound Activation Level(dB)** to -36, and then click OK.





At the top of the main Audacity window, to the right of the input and output level meters (labeled L and R), you will see the input and output volume. The left of the input and output volume, there is an volume icon. To adjust the **output and input volume** to maximum.

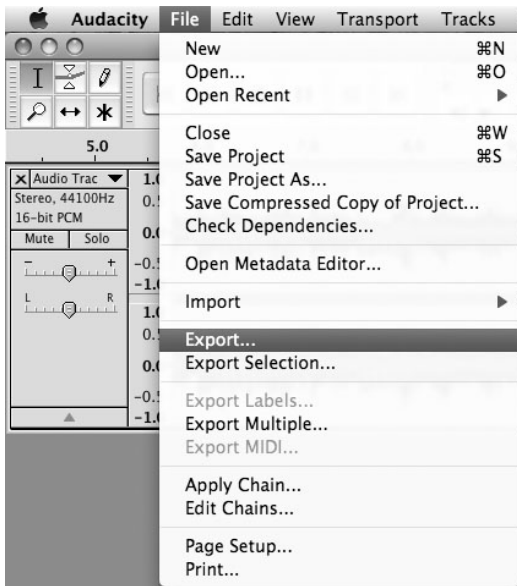


NOTE: Because of the variation of different operation system, the input volume control may not work on some individual Windows versions. Windows Vista is recommended to ensure the input volume control working properly.

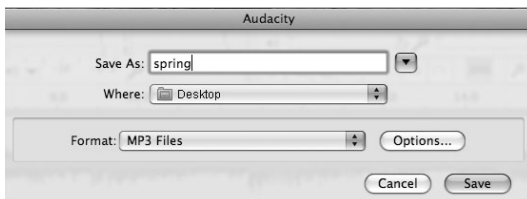
Export and Save Files (After Recording is Completed)

- When the song is finished, click the () on the screen. Then press the “STOP” button on the turntable.
- You have a music download on your computer now.
- You may play back the song through your computer.
- Simply click the () to play.
- NOTE: You may visit the Audacity website at <http://audacity.sourceforge.net>. For more detailed information and operation, etc.

1. Click the file tab on the audacity interface. Select “Export” to save the file.



2. It will pop-up below window after click Export. It will default **MP3 format**, but you also can select other format, only need to click the arrow located at the right of the **MP3 Files**.

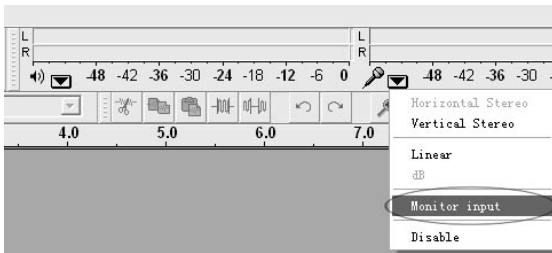


Troubleshooting Guide

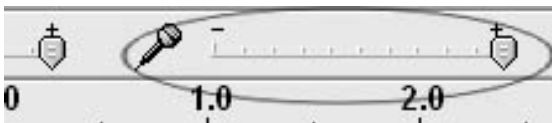
In case of trouble with the unit, please look through below and see if you can solve the problem by yourself before calling your dealer.

NO SOUND:

- If you are not getting any sound into the software application, go back to the preferences as shown above and make sure you have selected the USB input for the recording device.
- Power Cycle: Close Audacity, turn off the turntable, unplug the USB Cable. Then plug in the USB Cable, turn on the turntable, and reopen Audacity.
- If you are not able to hear any audio as you play the record, please click on the microphone drop-down arrow and select Monitor Input. This will enable you to hear the audio from the turntable, even if you have not record-enabled the Audacity application.



- If you are not seeing the microphone slider, please go to the Preferences menu in Audacity, click on the Interface tab and make sure that the Enable Mixer Toolbar and Enable Meter Toolbar options are checked. If they are not, please check them and then press OK.
- Check the microphone slider to make sure that it is at full volume, all the way to the right as shown in below: If you are not seeing the microphone slider, please go to the Preferences menu in Audacity, click on the Interface tab and make sure that the Enable Mixer Toolbar and Enable Meter Toolbar options are checked. If they are not, please check them and then press OK.



POOR SOUND Quality:

- Check your cartridge connection to make sure it is secured to the tone arm. The cartridge must be connected to the tone arm whenever using the turntable.
- Make sure that your RCA plugs are plugged into a source or not touching bare metal. If you are experiencing noise through the USB, you may have interference from the RCA plugs. Ensure the USB cable is not touching or near any other cables.
- If you experience any odd sounds coming from the recording, try closing all applications, restarting the computer, and only run Audacity while recording.
- Make sure that you have properly installed and calibrated the tone arm of the turntable.

Specifications

RECORD PLAYER section

Motor.....	DC servo motor
Drive System.....	Belt Drive
Speeds.....	33-1/3 rpm, 45 rpm and 78 rpm
Wow Flutter.....	Less than 0.25% (WTD)
S/N Ratio.....	More than 50 dB
Cartridge Type.....	Ceramic Stereo Cartridge
Stylus.....	ITRRS-300 (see pg.7 for replacements)
Output Level.....	160-380 mV (5 cm/sec at 1 KHz)

GENERAL

Power Requirements.....	AC 120 V~60 Hz
Power Consumption.....	5 W
Dimensions (L x D x H).....	.44x37x13.8 CM (approx)
Weight.....	2.9 kgs
Standard Accessories.....	Operating Instruction Booklet 45 rpm Adapter CD Disc USB Cable

Limited Warranty

90 Days Labor, One Year Parts

Innovative Technology Electronics Corp. (IT) warrants the product to be free from “Defects” in materials under normal use for a period of “One Year” from the date of the original purchase. The Warranty is “Not” transferable. IT agrees, within the initial “90 Day” period, to repair the product if it is determined to be defective at “No Charge”. It is further agreed that IT will cover the cost to repair or replace damaged “Parts” only for a total period of “One Year” from the date of the original purchase. The warranty does not cover cosmetic damage, antennas, AC cords, cabinets, headbands, ear-pads, or damage due to line power surges, connection to improper voltage supply or settings, misuse, mishandling, accident, acts of God or attempted repair by an unauthorized service agent.

To obtain service, the original purchaser MUST present a sales receipt / proof of purchase indicating date of purchase, amount paid, and place of purchase. Send the unit prepaid to the address below in the original packaging or reasonable substitute to prevent damage. You “Must” include your full name, shipping address and telephone number. No return will be shipped back to a PO Box. Please include your check or money order in the amount of \$12.00, payable to Innovative Technology Electronics Corp. to cover handling and return shipping charges. (IT) will not be responsible for delays or unprocessed claims resulting from a purchaser’s failure to provide any or all of the necessary information.

Send all inquires or returns to:

Customer Service Dept.

Innovative Technology Electronics Corp.

4 Anchor Way, Port Washington, NY 11050

Tel : 1-877-ITECH-97 (1-877-483-2497)

EMAIL: support@ithomeproducts.com

There are no express warranties except as listed above.

REPAIR OR REPLACEMENT AS PROVIDED UNDER THIS WARRANTY IS THE EXCLUSIVE REMEDY OF THE CUSTOMER, (IT) SHALL NOT BE LIABLE FOR ANY INCIDENTAL OR CONSEQUENTIAL DAMAGES FOR BREACH OF ANY EXPRESS OR IMPLIED WARRANTY ON THIS PRODUCT EXCEPT TO THE EXTENT PROHIBITED BY APPLICABLE LAW. ANY IMPLIED WARRANTY OF MERCHANTABILITY OR FITNESS FOR A PARTICULAR PURPOSE ON THIS PRODUCT IS LIMITED IN DURATION TO THE DURATION OF THIS WARRANTY.

Some states do not allow the exclusion or limitation of incidental or consequential damages, or limitations on how long an implied warranty lasts, so the above exclusions or limitations may not apply to you. This warranty gives you specific legal rights and you may also have other rights, which vary from state to state.