



DS-CAN2

Technical reference manual



Thank you!

Thank you very much for your investment in our unique data acquisition systems.

These are top-quality instruments which are designed to provide you years of reliable service. This guide has been prepared to help you get the most from your investment, starting from the day you take it out of the box, and extending for years into the future.

1 Table of contents

- 1 Table of contents..... 2
- 2 Safety Instructions..... 3
- 3 Specifications 9
- 4 Device operation 10
 - 4.1 Front and back side 10
 - 4.2 Connectors..... 11
- 5 Driver installation..... 12
- 6 Using DS-CAN2 in Dewesoft 14
 - 6.1 Hardware setup..... 14
 - 6.1.1 Start up of the device..... 14
 - 6.2 Losing USB connection..... 15
- 7 Firmware upgrade 16
- 8 Dewesoft LICENSE INFORMATION 17

2 Safety Instructions

The information contained in this document is subject to change without notice.

DEWESOFT d.o.o.. (DEWESOFT) shall not be liable for any errors contained in this document. DEWESOFT MAKES NO WARRANTIES OF ANY KIND WITH REGARD TO THIS DOCUMENT, WHETHER EXPRESS OR IMPLIED. DEWESOFT SPECIFICALLY DISCLAIMS THE IMPLIED WARRANTIES OF MERCHANTABILITY AND FITNESS FOR A PARTICULAR PURPOSE. DEWESOFT shall not be liable for any direct, indirect, special, incidental, or consequential damages, whether based on contract, tort, or any other legal theory, in connection with the furnishing of this document or the use of the information in this document.

Warranty Information:

A copy of the specific warranty terms applicable to your DEWESOFT product and replacement parts can be obtained from your local sales and service office.

Support

Please contact:
DEWESOFT d.o.o.
Gabrsko 11a
1420 Trbovlje
SLOVENIA
Tel.: +386 356 25 300
Fax: +386 356 25 301
Web: <http://www.dewesoft.org>
The telephone hotline is available
Monday to Friday between
08:00 and 15:00 CET (GMT +1:00)

Restricted Rights Legend:

Use Slovenian law for duplication or disclosure.
DEWESOFT d.o.o.
Gabrsko 11a
1420 Trbovlje
Slovenia

Printing History:

Version 1.2
Released JAN, 2012

Copyright © 2009 DEWESOFT d.o.o.

This document contains information which is protected by copyright. All rights are reserved. Reproduction, adaptation, or translation without prior written permission is prohibited, except as allowed under the copyright laws. All trademarks and registered trademarks are acknowledged to be the property of their owners.

Safety symbols in the manual:

WARNING Calls attention to a procedure, practice, or condition that could cause body injury or death.

CAUTION Call attention to a procedure, practice, or condition that could possibly cause damage to equipment or permanent loss of data.

WARNINGS

The following general safety precautions must be observed during all phases of operation, service, and repair of this product. Failure to comply with these precautions or with specific warnings elsewhere in this manual violates safety standards of design, manufacture, and intended use of the product. DEWESOFT d.o.o. assumes no liability for the customer's failure to comply with these requirements.

All accessories shown in this document are available as option and will not be shipped as standard parts.

Environmental Considerations

Information about the environmental impact of the product.

Product End-of-Life Handling

Observe the following guidelines when recycling a DEWESOFT system:

System and Components Recycling

Production of these components required the extraction and use of natural resources. The substances contained in the system could be harmful to your health and to the environment if the system is improperly handled at its end of life! Please recycle this product in an appropriate way to avoid an unnecessary pollution of the environment and to keep natural resources.



This symbol indicates that this system complies with the European Union's requirements according to Directive 2002/96/EC on waste electrical and electronic equipment (WEEE). Please find further information about recycling on the DEWESOFT web site www.dewesoft.org

Restriction of Hazardous Substances

This product has been classified as Monitoring and Control equipment, and is outside the scope of the 2002/95/EC RoHS Directive. However we take care about our environment and the product is lead free.

Safety instructions for all DEWESOFT systems

- The DEWESOFT data acquisition systems may only be installed by experts.
- Read your manual before operating the system.
- Observe local laws when using the instrument.
- Ground the equipment: For Safety Class 1 equipment (equipment having a protective earth terminal), a non interruptible safety earth ground must be provided from the mains power source to the product input wiring terminals or supplied power cable.
- DO NOT operate the product in an explosive atmosphere or in the presence of flammable gases or fumes.
- DO NOT operate damaged equipment: Whenever it is possible that the safety protection features built into this product have been impaired, either through physical damage, excessive moisture, or any other reason, REMOVE POWER and do not use the product until safe operation can be verified by service-trained personnel. If necessary, return the product to DEWESOFT sales and service office for service and repair to ensure that safety features are maintained.
- Keep away from live circuits: Operating personnel must not remove equipment covers or shields. Procedures involving the removal of covers or shields are for use by service-trained personnel only. Under certain conditions, dangerous voltages may exist even with the equipment switched off. To avoid dangerous electrical shock, DO NOT perform procedures involving cover or shield removal unless you are qualified to do so.
- No modifications are allowed at the instrument. The fuse in the power module has to be replaced by the same type. For continued protection against fire, replace the line fuse(s) only with fuse(s) of the same voltage and current rating and type. DO NOT use repaired fuses or short-circuited fuse holder labels and print on the power module may not be removed.
- DO NOT service or adjust alone. Do not attempt internal service or adjustment unless another person, capable of rendering first aid and resuscitation, is present.

- DO NOT substitute parts or modify equipment: Because of the danger of introducing additional hazards, do not install substitute parts or perform any unauthorized modification to the product. Return the product to DEWESOFT sales and service office for service and repair to ensure that safety features are maintained.
- Before opening the instrument (experts only) or exchanging the fuse in the power module disconnect power!
- Don't touch internal wiring!
- Don't use higher supply voltage than specified!
- Use only original plugs and cables for harnessing.
- You may not connect higher voltages than rated to any connectors.
- The power-cable and connector serve as Power-Breaker. The cable must not exceed 10 feet, disconnect function must be possible without tools.
- Safety of the operator and the unit depend on following these rules.

3 Specifications

CAN bus	
Number of ports	2
Interface type	CAN 2.0B, up to 1 MBit/sec
Special applications	OBDII, J1939, CAN output
Galvanic isolation	isolated
Bus pin fault protection	±36V
ESD protection	8kV
General specifications	
Power supply	6*-36 V DC
Maximum sensor power consumption	6 W
Maximum power consumption	11W
Interface	USB 2.0 interface
Physical dimensions	105x90x30 mm
Weight	230 g
Operating temperature	-20 to 60 deg. C
Storage temperature	-40 to 85 deg. C
Humidity	95% RH non condensing @ 60°C

* Startup voltage 7V

4 Device operation

4.1 Front and back side

Front connectors:

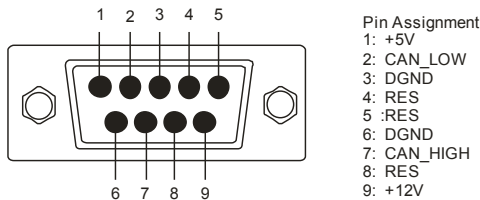


Back connectors:

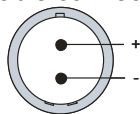


4.2 Connectors

9-pin D-SUB male connector for CAN bus:

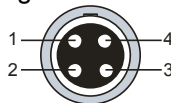


Power supply (mating cable connector: FGJ.1B.302CLLD42Z)



LEMO EGJ.1B.302.CLA

Sync connector (mating cable connector: FGG.00.304CLAD27Z)

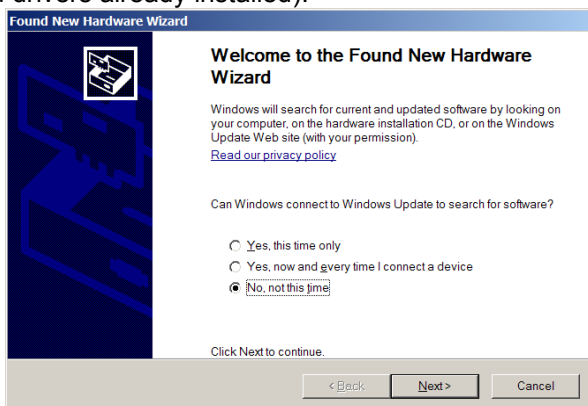


LEMO EGG.00.304.CLL

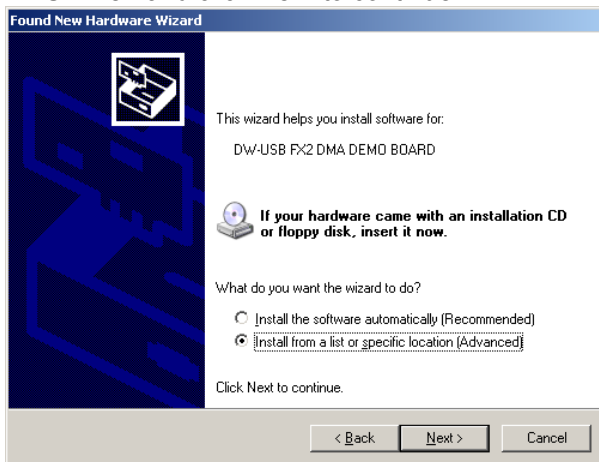
Pin Assignment	
1:	CLK
2:	Trigg
3:	RES
4:	DGND

5 Driver installation

To install the driver of DS-CAN2, please connect the device to the PC with USB cable. If the driver is not installed, the following message will appear (depending on your OS and drivers already installed):

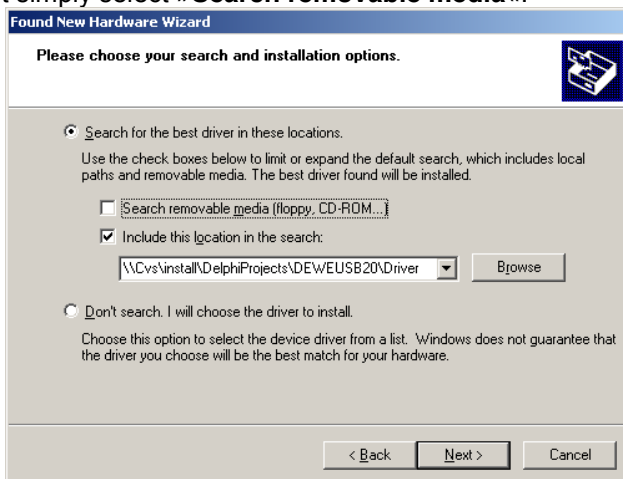


Press »**No, not this time**« and click **Next** to continue.

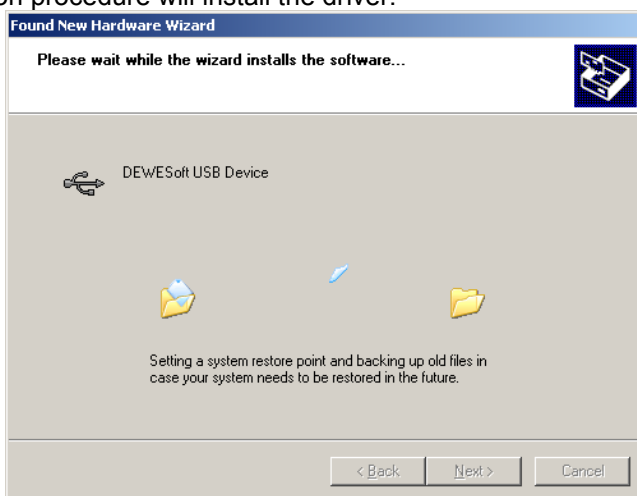


Select »**Install from a list or specific location (Advanced)**« option and click **Next**.

The driver should be located on the system CD. You can either point out this location or just simply select »**Search removable media**«.



The installation procedure will install the driver.



Finish the Wizard with **Finish** button.

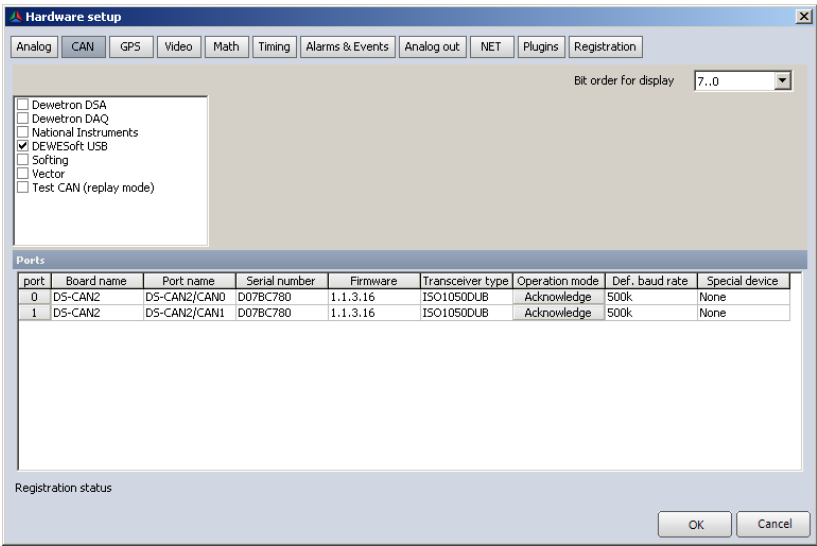
6 Using DS-CAN2 in Dewesoft

6.1 Hardware setup

6.1.1 Start up of the device

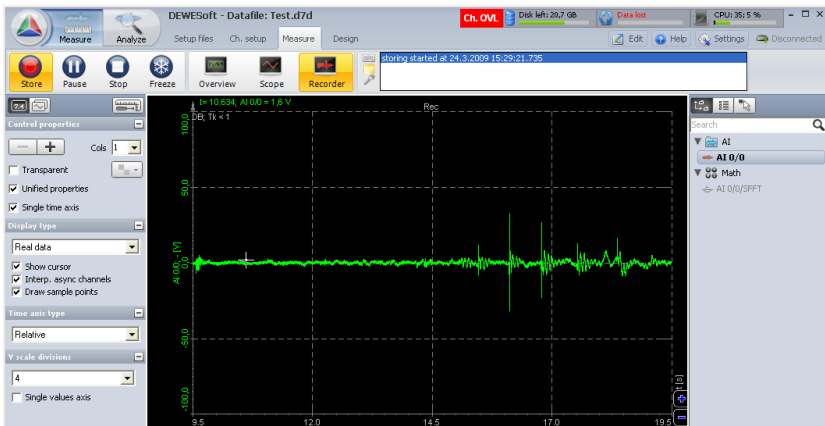
Please connect the device via USB to PC. Note that power supply is not needed unless you want to power external device from DS-CAN2 (like CPAD2 module). Then make sure that the device is connected to the PC when starting up Dewesoft.

To enable device in Dewesoft, go to System – Hardware setup CAN section and choose Dewesoft USB device

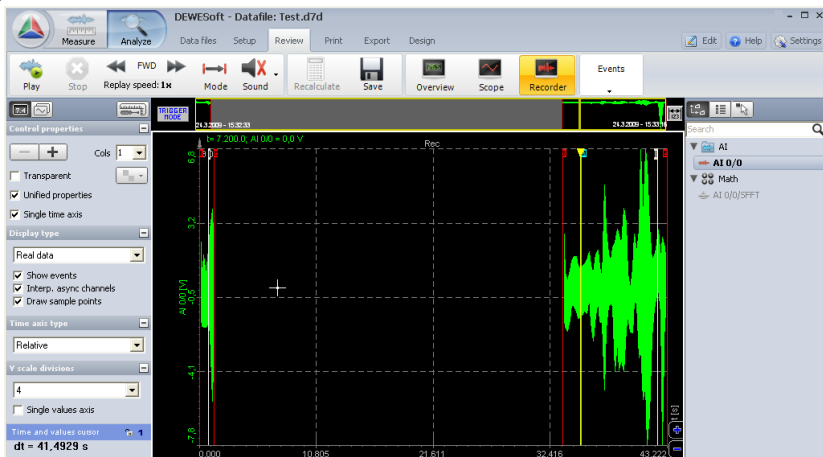


6.2 Losing USB connection

When acquiring data and the USB connection is lost, the acquisition will stop. In this case reconnect the unit and restart the acquisition with reconnect button.



In this case (if the data was being stored, the gap will be filled in with missing data).



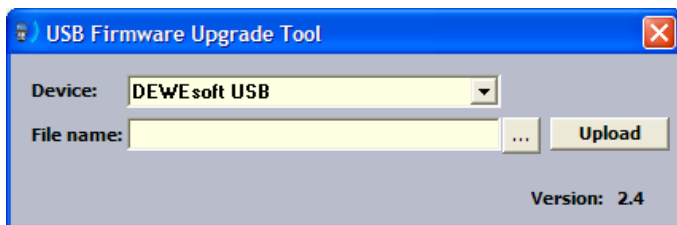
7 Firmware upgrade

To make firmware upgrade of the device, please connect DS-CAN2 with the USB cable to the computer. It is assumed that the drivers are already installed.

Important: Make sure that the external power supply is NOT connected during the firmware upgrade.

Please download the latest firmware from Dewesoft web site. Then run “USB Firmware Upgrade Tool” program.

Next select DEWesoft USB in the “Device” combo box.



Press “...” button, select DS-CAN2_xxx.fwu file and click Open.

Press Upload button and wait until progress bar reaches 100%. Please don't interrupt this operation.

When upload is finished, press OK and new firmware is uploaded on the device. If this fails for any reason, repeat the upload process again.

When the process is finished, disconnect the USB, reconnect power and then reconnect USB again.

8 Dewesoft LICENSE INFORMATION

Dewesoft 6 LICENSE INFORMATION

To register your instrument in Dewesoft, please go to System – Hardware setup and follow the instruction from user's manual to select Dewesoft USB device in Analog and CAN tab sheet. If they are selected, deselect the DAQP/MDAQ amplifiers and go to licensing tab. Enter the license key 2187801 for A/D boards and 2187801 for the CAN device.

The screenshot shows the 'Hardware setup' window with the 'Licensing' tab selected. The window has a blue title bar and a menu bar with tabs: Analog, CAN, GPS, Video, Math, Timing, Alarms, Analog out, NET, Plugins, and Licensing. Below the menu bar, there are input fields for 'User name' (containing 'demo') and 'User location' (containing 'dewetron'), and an unchecked checkbox for 'Evaluation license'. A table with four columns: 'Hardware type', 'Hardware key(s)', 'License key(s)', and 'Status' is displayed. The table contains two rows: 'A/D boards' and 'CAN option', both with '001' in the hardware key column and '2187801' in the license key column. The status column shows green checkmarks for both. At the bottom left, the 'Registration status' is 'PROF'. At the bottom right, there are 'OK' and 'Cancel' buttons.

Hardware type	Hardware key(s)	License key(s)	Status
A/D boards	001	2187801	✓
CAN option	001	2187801	✓

Registration status: **PROF**

OK Cancel

DS-CAN2

Dewesoft 7 LICENSE INFORMATION

With the purchase of DS-CAN2 you are entitled for free upgrades of the software and firmware within all Dewesoft versions 6 and 7.

In Dewesoft 7, select device like in version 6, go to registration, select Create and enter the license key provided in licence agreement:

Hardware setup

Analog

CAN

GPS

Video

Math

Timing

Alarms & Events

Analog out

NET

Plugins

Registration

User name

User location

Reference number (optional)

Device number (optional)

Your name

Your location

Enter new license

DW7_K295_J9RC_ZTM1

Register online

Register offline

Cancel

Registration status

not supported

OK

Cancel

Press Register Online (computer must be connected to Internet) and you will get the registration file.

Hardware setup

Analog
CAN
GPS
Video
Math
Timing
Alarms & Events
Analog out
NET
Plugins
Registration

User name

User location

Reference number (optional)

Device number (optional)

Your name

Your location

Existing license(s)

Create

Delete

Update

Used	License key	Software version and options	Status
✓	DW7-KZ95-J9RC-ZTM1	SE; Options:CAN	Valid

Registration status
SE

OK

Cancel