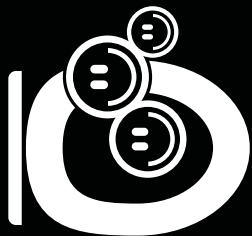


User's Manual



AIRKEEP



Congratulations on purchasing a product of VTEC !

ATTENTION:

Read carefully all the instructions before using the AIRKEEP.

Remove the protective adhesive before connecting the airkeep. See item 1.1

1 - AIRKEEP Installation

AIRKEEP - battery included

AIRKEEP comes with the battery disconnected
Please follow the steps below before installation

- Remove the battery from the AIRKEEP.
- Plug the equipment in the battery.
See item(1.1)
- After performing the above operation the unit is connected and works by the sensor.

AIRKEEP - battery not included

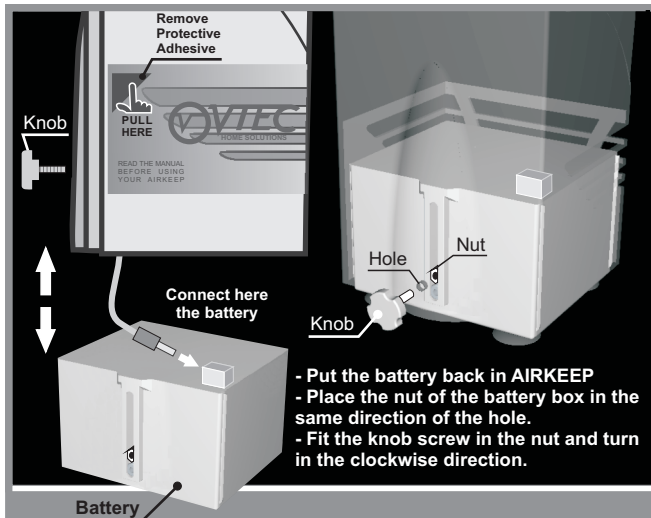
- Attach the plug of the charger to the jack of the AIRKEEP. See diagram (item 2)
- Plug the charger into the outlet.
- After performing the above operation the unit is connected and works by the sensor.

The battery can be purchased later.

1.1 - Connecting the battery

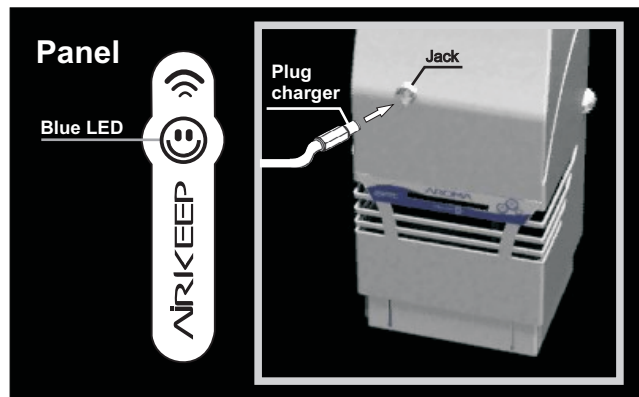
To remove the battery follow the steps below:

- Place the AIRKEEP on any surface.
- Turn the Knob in the counterclock direction to remove it.
- Remove the battery by pulling it down with care.



- Put the battery back in AIRKEEP
- Place the nut of the battery box in the same direction of the hole.
- Fit the knob screw in the nut and turn in the clockwise direction.

2 - Recharging the battery



Recharge the battery until the blue LED stops flashing, before using the AIRKEEP.

- Attach the plug of the charger to the jack of the AIRKEEP according to the illustration.
- After connecting the plug in the jack, the blue LED will flash indicating that the battery is being recharged.
- The battery is 100% recharged when the blue LED stops flashing.
- Battery recharge time: approximately 4-7 hours, if it is completely empty.
- Disconnect the charger from the outlet after the total recharge of the battery.
- It is normal that the charger gets a little hot during the recharging.
- The battery can be charged out of the device. Remove the battery and connect the plug of the charger into the battery jack. The time of the recharge is 6 hours.
- **If your battery runs out of power recharge immediately or it may be damaged.**

WARNING:

Do not recharge the battery in wet places, because the contact with the water or any other liquid can damage the apparatus or even provoke electrical shock.

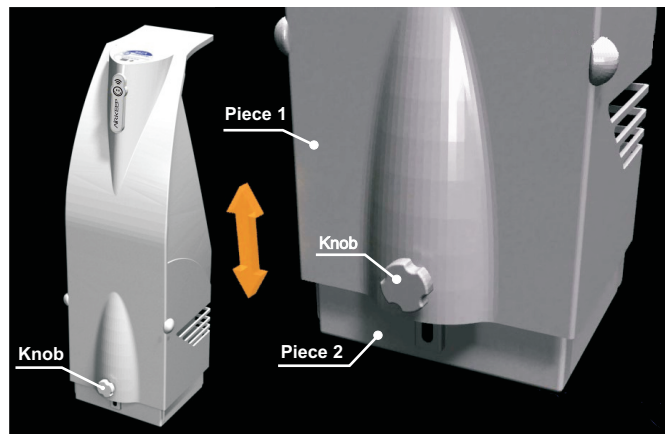
3 - Installation of AIRKEEP on the toilet bowl

Adjust the height of the AIRKEEP according to the height of the border of the toilet bowl where it is installed.

The adjustment of the height is done through the Knob that is located in the inferior part behind the equipment.

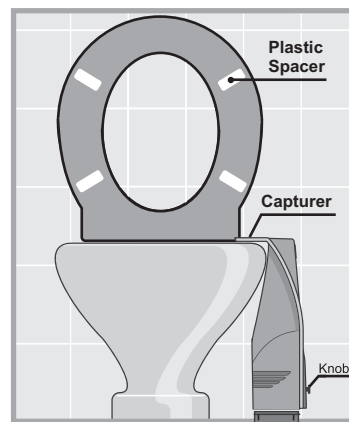
3.1 - Adjustment of the height:

- Turn the Knob in the counterclock direction just enough so that piece 2 can move inside of piece 1. It is not necessary to remove the **Knob**.



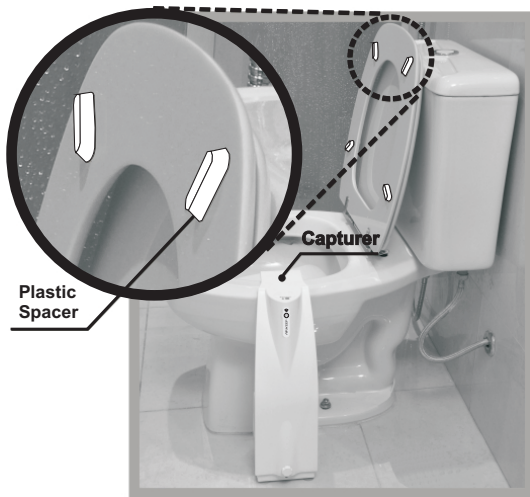
- Place the AIRKEEP next to the toilet bowl and adjust its height according to the height of the border of the toilet bowl. After adjusting the height, turn the knob in the clockwise direction to the end.

Accessories:

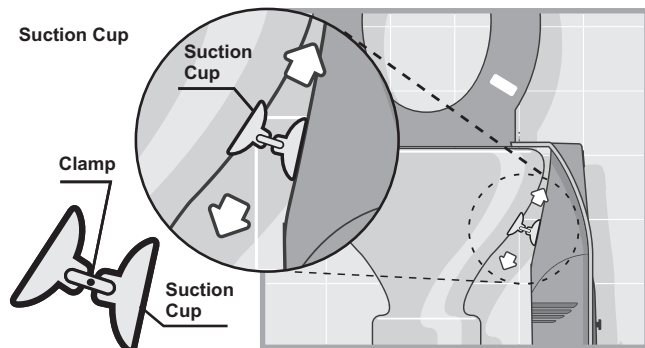


Plastic Spacer

- On toiletseats made of hard material, the equipment must be placed leaning on the toilet bowl, according to the illustration above. The ideal toiletseat to utilize with the **AIRKEEP** is one made of hard material with plastic spacer under the seat.
- If your toiletseat already have the plastic spacer, put the new plastic spacer alongside them if needed



- The Plastic Spacer must be affixed only to the seat of a rigid material to prevent it from pressing against and even damaging the unit.
- **Clean the surface area where the Plastic Spacer is to be affixed.**
- Place the Plastic Spacers as the illustrations.
- Adhesive curing time = 70hrs. During this time, avoid contacts with fluids.
- Do not let the Plastic Spacer from the toiletseat hit or touch the capturer, according to the picture above.**



- The Suction cup is used to fix the AIRKEEP in the installed position.
- Adjust the position of the Suction cup with the AIRKEEP according to the toilet bowl design. Adjust the clamp size for easy installation. (See the diagram)
- The size of the clamp can be adjusted to fix better.**
- Clean the installation place before fixing the Suction cup.**
- To have suction, you must moisten the cup before the fixing.**

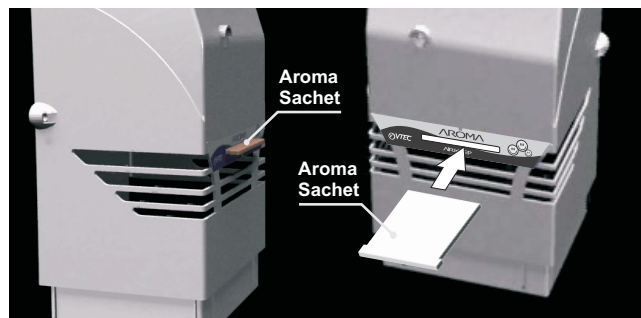


AIRKEEP

I N S T A L L E D



4 - Aroma Installation (optional use):



Follow the steps below to install the aroma sachet :

- The aroma sachet does not come with AIRKEEP
- Remove the aroma sachet from package.
- Place the aroma into the support of the AIRKEEP.
- The aroma sachet lasts about 2 weeks.

AROMATIC SYSTEM:

AIRKEEP automatically turns on every 50 minutes freshening the environment.

To freshen it is necessary that the device is with the aroma sachet.
Use only original scents to not damage the AIRKEEP.

Aromas

VTEC provides scents that can be used optionally in AIRKEEP, leaving a pleasant scent in the environment.

5 - How it works

AIRKEEP will turn on automatically 3 seconds after the user sits on the toiletseat drawing all the odor from inside the toilet bowl. Then all the odor will pass through the filter and return to the environment as pure air. The equipment will turn off automatically 15 seconds after the user stands up.

ATTENTION:
AIRKEEP ONLY WILL GIVE RESULTS WHEN
THE USER IS SEATING ON THE TOILETSEAT

6 - AIRKEEP Panel



- After connecting the device to the battery, the blue LED will light up for 4 seconds.
- The device turns on automatically when the user stays for more than 3 seconds in the range of the sensor.
- The blue LED will blink with 25% of remaining battery power, except when the device is in use. At this time we recommend charging the battery.
- The blue LED will flash faster when battery power has finished. At this moment the filtering engine will no longer be activated. Recharge the battery immediately to not be damaged.

Sensor detection system:

The blue LED of the panel will light when the user is in the range of the sensor. This system of detection serves to help the user to identify the reach of the sensor and give orientation in the installation of the AIRKEEP. The AIRKEEP must be positioned in such a way that when the user seats on the seat of the toilet bowl the sensor will react.

- The apparatus only will activate through the sensor.
- To avoid activation without the presence of the user, keep the panel of the sensor always clean.

7 - Maintenance - How to care for AIRKEEP

- Do weekly cleaning, preventing it from accumulating dust and dirt that may prevent the entry of air into the capture opening.
- For cleaning and maintenance of the AIRKEEP, it is recommended that only a damp cloth with alcohol be used.
- To wash the toilet, remove the AIRKEEP.
- In case of technical assistance, it is recommended that it be done by authorized technician from VTEC.
- It is essential to keep your apparatus always clean.

7.1 - Battery maintenance

To avoid damage or burning, follow the instructions correctly:

- When storing the AIRKEEP for a long period, disconnect the battery cable. Recharge the battery before storing the AIRKEEP.
- Maintenance free Battery.

- Keep the battery in ambient temperature of 32 to 102 Fahrenheit / 0 to 40 Celsius. Temperatures above or below can result in damage or deformation of the battery. The battery will have more durability in temperatures of about 82 Fahrenheit / 25 Celsius.

- Use only original VTEC batteries and charges. The Warranty of AIRKEEP does not cover damages caused by the use of batteries or charges that are not from VTEC.

- Never utilize the battery of AIRKEEP with other equipment.

- During the recharging, keep the battery in ambient temperature and avoid direct contact with solar light. Never recharge the battery in wet places.

- Avoid dropping or hitting the battery which can damage its performance.

- Store the battery far away from water, temperature and elevated humidity. Do not store the battery exposed to solar light. To store the battery, it should be with 100% of its charge. Recharge the battery every 3 month, because its life can diminish in the case of storing for long period without charging.

- If your battery runs out of power recharge immediately or it may be damaged.

- If batteries do not hold the charge, it may be time to change for a new battery.

- The rechargeable batteries must be discarded adequately. Get in contact with the local center of recycling to know about the adequately discard methods.

WARNING: Never throw the battery in the fire, it may explode.

8 - Technical Information

AIRKEEP - System 3 in 1

- Eliminates the bad odor
- Purifies the air
- Aromatizes the ambient

Utility: Total elimination of bad odor during and after using the toilet bowl.

Presence Sensor: approximate reach of 8 inches

Electronic board controlled by microprocessor

Battery (optional): sealed lead acid - 12V 5AH

Sealed Motor: 12V nominal tension

Material: Plastic ABS

Components: Suction Cup kit, 4 Plastic Spacers, charger and battery (battery model only).



9 - Filter

Utilization

- The filter must be changed every 8 months, or before, if an odor is detected.
- Utilize only original filters from VTEC. The utilization of filters that are not original will damage the AIRKEEP.
- It is important to clean inside the unit when changing the filter.

Filter care:

- The filter can not have contact with any kind of liquid, it may minimize its efficiency.
- Do not utilize with expired filters or broken safety seal.
- The filter will lose its validity and must be substituted in case it is used to filter any kind of smoke;
- The filter does not contain any kind of toxic substance.
- The instructions to change the filter comes with the new filter.

Legal Information

Copyright 2010 VTEC. All rights reserved.

It is prohibited to reproduce, transfer, distribute or store partial or totality the information in this Users Manual, in any form, without previous authorization from VTEC.

Product, design and technologies patented by VTEC. All rights reserved.

The logo VTEC, VTEC and AIRKEEP are brand registered.

The information contained in this Users Manual has been written for the AIRKEEP.

VTEC works under the orientation of continuous development.

VTEC reserves the right for making alterations in the products or in the specifications with no previous warning.

VTEC reserves the rights to revise this document, or remove it from the market, with no previous warning.

Informations

For more information communicate with us:

Phone number: (+5531) 3241-3060

www.airkeep.com

www.vtec.com.br



www.airkeep.com