



## Cannes Edition Product List

Congratulations on your purchase of a DSLRPros Cannes Edition Aerial Kit. Inside your Special Edition tough case you will find the following items with numbers that correspond to the kit image on the following page.

1. DJI Instruction Manual and Software Installer Disk
2. DJI 2.4 GHz BTU Datalink Radio For Waypoint Navigation
3. DJI Phantom 2 With 3-Axis Gimbal And Anti-Gravity Motors Pre-Installed
4. DJI Phantom 2 Quick Start Guide
5. Original DJI Motors
6. Antenna For Datalink
7. USB Cables for Datalink
8. Set Of 2 DJI Smart Flight Battery Chargers
9. 2 LiPo Batteries For Futaba Transmitter (1 Shown)
10. Set Of 5 DJI Smart Flight Batteries (2 Shown)
11. DSLRPros Lanyard For Futaba Transmitter
12. Set Of 2 Micro-USB Cables
13. A/C Power Cables For DJI Smart Flight Battery Chargers
14. Antenna Set For FPV Field Monitor
15. Futaba Transmitter
16. Cables For FPV Field Monitor
17. Propeller Guards
18. Set Of 4 Self-Tightening Propeller Blades (Carbon Fiber Blades Not Pictured)
19. Charging Harness For LiPo Battery With Car Adaptor
20. Balance Board for LiPo Battery Charger
21. DSLRPros TXS-8 Pro LiPo Charger
22. A/C Power Cable For LiPo Multi-Charger
23. String For Propeller Guards
24. Anti-Drop Pins For Gimbal
25. International Plug Set
26. Field Monitor Charger
27. A/C Power Cable For Field Monitor Charger
28. 5.8 GHz Patch Antenna For FPV Field Monitor
29. DSLRPros 7" FPV Field Monitor
30. Sun Shade For FPV Field Monitor
31. Set of Spare Gimbal Vibration Absorbers
32. Philip's Head Screwdriver
33. Set Of Spare Screws and Propeller Wrench
34. FPV Goggles (Not Pictured)



## PLEASE READ ALL TOPICS BEFORE POWERING ON FOR FIRST TIME

New pilots should **NOT** fly the Phantom with the Gimbal attached until they have had at least 10 hours of flight practice. Refer to the Zenmuse H3-3D operator's manual for installation and removal instructions (found on [www.dji.com](http://www.dji.com)).

DJI Phantom 2 Wiki: [http://wiki.dji.com/en/index.php/Phantom\\_2](http://wiki.dji.com/en/index.php/Phantom_2)

DJI Phantom 2 Videos: <http://www.dji.com/product/phantom-2/video>

For DSLRPros videos please visit our YouTube Channel

Link: <http://www.youtube.com/channel/UCJUVqDvAzr1jbdrmhxsH7jw>

1. Turning On Your Transmitter and Phantom 2
2. Advanced Calibration
3. Compass Calibration
4. LED Break Down
5. GoPro Shooting Preferences
6. Flight Modes
7. OEM Phantom Controller/Transmitter (If Applicable)
8. Futaba Controller/Transmitter (If Applicable)
9. Propeller Installation
10. Gimbal Installation & Removal
11. Updating Your Software
12. Battery Safety

### **WARNING:**

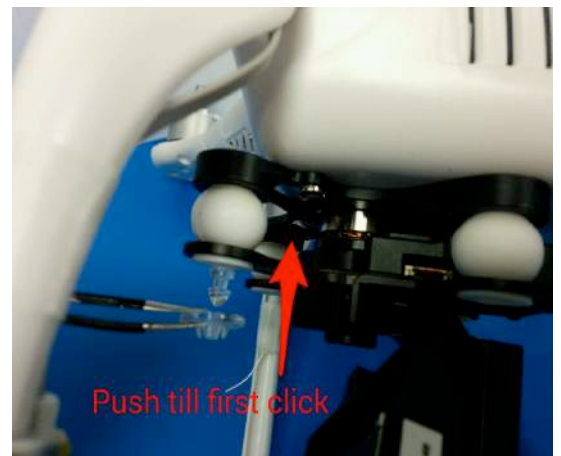
**DO NOT** fly with zip ties attached to Phantom. Zip ties are installed for shipping purposes only.

**DO NOT** use WiFi with the GoPro on the Phantom. This will cause the pilot to lose control over the craft and result in a flyaway.

**DO NOT** power on the Phantom without a GoPro attached to the gimbal. This will damage the gimbal and render it unusable.

Be sure to add the anti-drop caps to the gimbal before flying with the gimbal attached.

It is the owner's responsibility to be certain that the propeller blades are attached properly and securely fastened before every flight.



## 1. **Turning On Your Transmitter and Phantom 2**

- Always turn on your transmitter before turning on your craft. To turn on our transmitter press the power switch to the "on" position. Make sure your throttle is all the way down and the toggle switches are in the uppermost position before turning on your transmitter.
- To turn on your Phantom 2 insert the DJI Smart Flight Battery into the craft, press the circular power button once, then press again and hold until the Power Light on the battery turns red.

## 2. **Advanced Calibration**

Make sure the settings have been properly adjusted so that the Phantom can run with the best performance possible.

- Plug the Phantom into your PC or Mac using the USB cable provided.
- Power on the transmitter with the throttle all the way down.
- Power on the Phantom.
- Open the DJI Phantom Application.
- Go to the "Tools" tab.
- Click "Advance."
- Make sure there is no metal anywhere around the compass.
- Do not touch the table that the craft is on and make sure it is very still.
- Click "advanced cali."
- When a box pops up that says "power down MC" ignore it, click OK, and do not touch anything.
- When the advanced calibration has completed successfully, a green check mark will appear to the right of the status bar.

## 3. **Compass Calibration**

It is important to calibrate your compass outdoors every time you fly your craft. This allows the Phantom to track its own position from multiple satellites and ensures optimal performance.

- Set the Phantom on a flat surface.
- With the throttle down and all switches in the uppermost position power up the transmitter and then power up the Phantom.
- Wait until the Phantom has full GPS lock. You will know the Phantom has full GPS lock when the LEDs under the Phantom's arms are green and blinking.
- Flip the flight mode switch from "GPS" to "Atti" five times in a steady motion until the lights on the underside of the craft turn a solid, unblinking yellow.
- Pick up the Phantom (do not hold by compass).
- Hold the Phantom straight out and turn your body in a complete circle until the lights turn from yellow to solid green.
- Stop turning.
- Rotate the Phantom vertically so that the USB port is facing straight down and repeat your 360-degree rotation until the lights blink green again.
- Place the Phantom back on the ground and look to see that there are only green blinking lights. If not, repeat the process.

#### 4. **LED Break Down**

This list will help users understand what all the different LED light combinations on the Phantom mean.

- Initialization: Slow, steady flashing yellow lights.
- Satellite Lock: 2 green blinks.
- Transmitter Off: Rapid steady flashing yellow lights.
- IOC Enabled: Users will see green flashing lights but intermittently have a yellow flash indicating that it is working. Be sure to fly **more than** 30 feet away from the craft's home location.
- DO NOT fly with any red lights at all.

#### 4. **Starting Up the FPV (If Applicable)**

Follow these steps to properly turn on the FPV connection. Not following these steps may result in damage to the system.

- Make sure the GoPro is connected and powered on.
- Make sure the antennas are screwed in to both the TX and Monitor/Rx of the FPV system before powering on.
- Make sure the BAND and CHANNELS on both the FPV TX and Monitor/Rx are the same. Our FPV system is multichannel and multi-band capable.
- When the digital counter turns on the FPV TX is on and transmitting.
- Turn on the FPV Monitor/Rx by pressing and holding the power button for 3 seconds. A red light next to the power button will turn on when the Monitor is on.

#### 5. **GoPro Shooting Preferences**

The GoPro has an array of different shooting modes and settings. This can be overwhelming for users who are not accustomed to using a GoPro, so here is a quick reference guide on our recommendations for different shooting conditions. More information can be found in the GoPro manual.

- Overall best shooting: 2.7k, 30 FPS,
- Low light shooting: 1080P 30 FPS, Wide, No Pro tune
- Slow motion: 1080p at 60 fps (any setting at a higher fps than 60)
- Put all GoPro footage through "CineForm" (free editing/conversion software offered by GoPro) before putting it into any other editing program.

#### 6. **Flight Modes**

The Phantom 2 comes with multiple flight modes that allow users to control the Phantom in many different ways.

- Attitude Mode: Maintains altitude but the craft will keep moving in one direction when influenced by wind or momentum.
- GPS Attitude Mode: Maintains altitude and position. Even if acted upon by an outside force it will return to its last location (where the user let go of the sticks).
- IOC Mode: No matter the position of the Phantom, the directional controls will always remain the same.

## 7. OEM Phantom Controller/Transmitter (If Applicable)

The Phantom OEM Controller/Transmitter is the default transmitter for the Phantom 2.

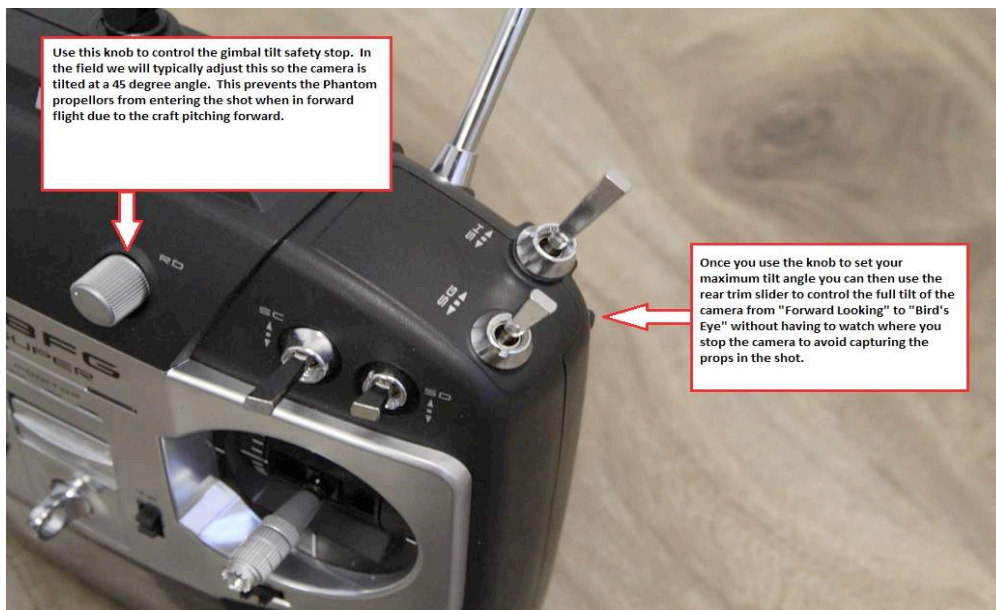
- Refer to the DJI tutorials and User Manual for flight controls and information.
- The DSLRPros Lanyard attaches to the OEM Phantom Transmitter by the silver loop above the power switch.

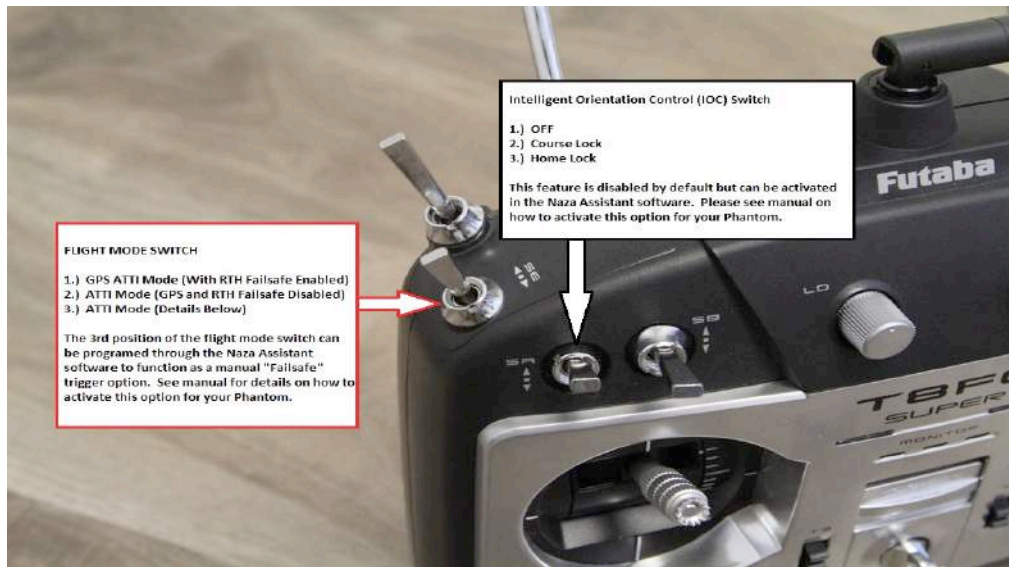
## 8. Futaba Controller/Transmitter (If Applicable)

The Futaba controller is the ideal controller for DSLRPros aerial kits. This is an upgraded controller that provides more options when piloting the Phantom.

The LiPo charger is meant to charge the LiPo battery only. **NEVER** charge a LiPo battery with any charger that is not a LiPo battery charger. Incorrect charging can cause damage the battery that may result in severe damage to persons and surroundings.

- Left Stick: Located on the left hand side of the transmitter, pressing up and down on the throttle controls vertical movements. Pressing left and right on the throttle stick causes the aerial to rotate clockwise or counter-clockwise.
- Right Stick: Located on the right hand side of the transmitter, the right stick controls forward and backward movement and left and right horizontal movement.
- To turn on the motors for your craft, move both the left and right control stick all the way down and towards the center of the transmitter. Release the sticks when the motors begin to spin.
- SA Toggle Switch: This is the Intelligent Orientation Control (IOC) mode, which is NOT enabled by default. This switch is located on the left side of the transmitter just above the throttle control.
- SE Toggle Switch: This controls the flight mode. This switch is located on the top, left hand side of the transmitter. See the "Advanced NAZA Assistant Manual" for further details.
- SH Toggle Switch: This is the timer reset. This timer is set to warn the user when to start landing the Phantom. This switch is located on the top, right hand side of the transmitter.
- RD Knob: This sets the gimbal stopping point for the tilt. The trim slider on the rear, right side of the Futaba controls the tilt. The RD knob is located on the front of the transmitter, above the power switch.
- SD Toggle Switch: The Dual Rate option on the Futaba allows users to limit the overall speed at which the Phantom can operate through the "Fluid Slow Pan" mode.





## 9. Propeller Installation

Proper direction for rotation is necessary when attaching propeller blades. When the battery door is facing the user, the motors are numbered 1 to 4 (counter clockwise), starting with the left hand motor. Motors 1 & 3 will be removed as usual, counter clockwise. To remove nuts from motors 2 & 4 the prop nut will need to be rotated clockwise.



To attach the propellers, remove the warning discs from the motors and spin the propeller blades onto the corresponding motor in the direction indicated by the warning discs. Correct propeller installation is necessary for proper flight. Additional information can be found in the DJI User Manual.

## 10. Gimbal Installation & Removal

It is highly recommended that new pilots remove the lower half of the gimbal before flight practice so that in the event of a crash while learning to fly the Phantom the Zenmuse H3-3D will not be damaged. Please refer to the Zenmuse H3-3D operator manual for detailed installation and removal procedures. The images and directions below are only supplemental to the manuals found on the DJI website.

Only the lower half of the gimbal is attached and secured in place via the rubber tension grommets, which have a lip that fits into the bracket rings. While these provide enough tension to retain the gimbal during flight they can come loose if the craft is involved in a significant crash. The grey/black ribbon cable will be the only connection to the craft for power and video. This cable can be disconnected and reconnected at will after the lower half is removed from the brackets.

- To disconnect your gimbal, pinch the rubber tension grommets and pull out of the top plate.
- Disconnect the ribbon cable from the gimbal by firmly pulling it out of the back of the gimbal. It is recommended that you disconnect the gimbal cable before performing any firmware updates. Failure to do so can result in damage to your gimbal.
- To reconnect your gimbal, pinch the rubber tension grommets back into place and reattach the ribbon cable.
- Be sure to attach the anti-drop pins before flying with your gimbal installed.



## 11. Updating Your Software

It is recommended that you periodically check for software updates using the DJI assistant software application. When upgrading the firmware on either the transmitter or the craft, be sure to disconnect the gimbal from the craft. Upgrading your software with the gimbal's ribbon cable still attached can permanently damage the gimbal.

- Plug the Phantom into your PC or Mac using the USB cable provided.
- Power on the transmitter with the throttle all the way down.
- Power on the Phantom.
- Open the DJI Phantom software.
- Go to the “Upgrade” tab.
- If upgrades are available, check with DSLRPros to ensure that the upgrade is necessary before installing.
- After the upgrade is complete, power down your craft and transmitter before reattaching the gimbal.

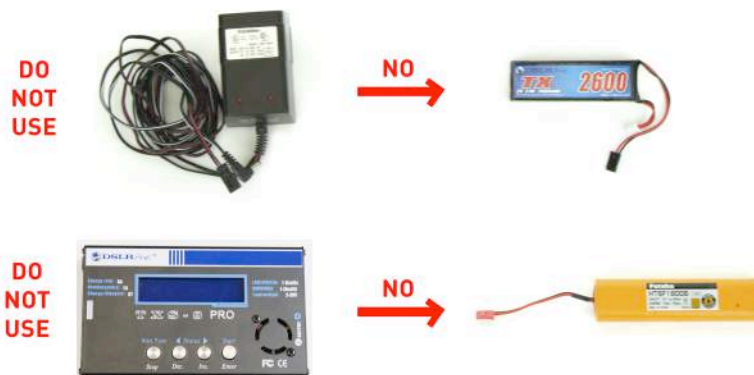
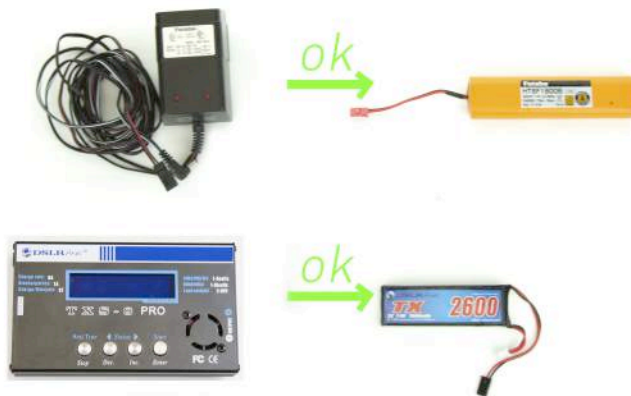


## 12. Battery Safety

It is vital to the safety of your aerial craft, yourself, and others that you practice proper battery safety when using, charging, and storing all batteries used with your Phantom. Improper use, charging, and/or storage of batteries can result in damage to the battery or personal property. Please adhere to all battery safety guidelines in the included manuals. The estimated flight time for a Phantom 2 with H3-3D gimbal under ideal conditions is 11 minutes.

- Only charge your batteries using the included charging units. Failure to do so may result in fire.
- Never charge batteries unattended.
- If you notice that a battery is swelling or ballooning, immediately discontinue the charge, remove the battery from the charger, and observe the battery outside and away from any combustible materials for at least 15 minutes.
- In the event of a crash, remove the battery from the craft and observe it in a safe location looking for swelling or damage for at least 15 minutes before using the battery again.
- When storing your batteries for more than two weeks, you must reduce their charge to storage mode. Refer to your manual for proper battery storage procedures.

If your kit includes a Futaba transmitter with a Lithium Polymer Battery, please adhere to the guidelines outlined in your charging kit and only use the included Futaba charging station when charging a Futaba battery. It is always recommended to charge and store your LiPo batteries in a LiPo Safe Flame Resistant bag. Failure to do so can result in fire.





## DSLRPros Futaba 8FG Black Edition Super 14-Channel Ultimate Kit Replacement Transmitter

### Pre-programmed Control Guide



**(1) SE Toggle Switch (GPS, ATTI, ATTI):** This is your flight mode control. The lowest ATTI position can be set to trigger "FAILSAFE" as an advanced feature. See your DJI Phantom "Advanced NAZA Assistant Manual" for further details.

**(2) SA Toggle Switch (OFF, COURSE LOCK, HOME LOCK):** This is your Intelligent Orientation Control or IOC. This mode is not enabled by default.

**(3) SB and SC Toggle Switches (OFF, SMALL RADIUS, LARGE RADIUS):** These switches control the advanced Point of Interest flight profiles. This function allows the operator to bank left or right using only the right joystick. Using the SB Toggle will allow the pilot to fly an inside pivot around a central object. Using the SC Toggle will enable you to fly an outside pivot. These functions are reserved for advanced users and NOT enabled at default.

**(4) RD Knob:** This knob sets the gimbal's stopping point for the camera tilt. The tilt is controlled by the trim lever on the rear right side of the Futaba.

**(5) SD Toggle Switch (OFF, 30%, 50%):** This enables the "Fluid Slow Pan" mode.

**(6) Throttle and Pan Control Stick.**

**(7) Forward, Backward, Left and Right Control Stick.**

**(8) SH Toggle Switch:** This is your timer reset. The Futaba comes with dual timers set to give you an audible alarm at 4 minutes and again at 8 minutes. Once you switch out a new battery, use the SH switch to zero out the timer. NOTE: The automatic timer should only be used as a reference point and should not be relied upon for accurate battery life. Under ideal conditions, a Phantom 2 with H3-3D axis installed will have 11 minutes of flight time.



## Phantom 2 Flight Procedures

It is recommended that you follow this procedure when flying your craft.

- Be certain that the WiFi function on your GoPro is off. If you see a flashing blue light on your GoPro, this means the WiFi function is on and must be turned off before starting your craft.
- Check that batteries for transmitter and craft are fully charged and properly installed.
- Check that a camera is connected to gimbal.
- Check that antennas are connected to FPV monitor.
- Check that propellers are securely fastened to motors.
- Place all switches on transmitter in their uppermost position with the throttle all the way down.
- Power on your transmitter.
- Power on your craft and wait for LED lights to stop flashing red, indicating that your craft has achieved its GPS signal.
- Perform a compass calibration.
- With the craft on an even surface at least ten feet away from you, start the motors by moving the control sticks down and towards the center of the transmitter.
- Press up on the throttle to take off.