

Introduction

F007 use the precise electron circuit and good productive technology, which is the metal structure fingerprint & access machine.

This machine uses the most advanced fingerprint identification technology, very safety. Which is the most ideal choose. It is widely used in business affairs organization, office, factory, housing district etc.

This product's programming is done by the infrared remote control keypad or fingerprint manager. This product maximum can store 120 fingerprints. There are 2 fingerprint managers, and each fingerprint has one ID code.

Specifications

Sleeping function

When this machine in stay status, it will auto enter sleep status. This can reduce power dissipation and prolong the machine's use life.

Manager infrared remote control keypad

Users use infrared remote control keypad, when enter the programming mode they can operate as follow:
Changing manager code. Add fingerprints. Delete fingerprints. Delete all fingerprints. release alarm. Setting open door time. Setting release alarm

Manager fingerprint operation function

ID number 1: Manager add fingerprint (can't open door, number 1 is used add users; number 2 is used deleted users)
ID number 2: Manager delete fingerprint
ID number 3-120: users fingerprint
User fingerprint operation function
ID number 3-120: users fingerprint are used open door.

Open door button operation function

This button is used to open the door.
Parma setting function
Open door time: 0-10s, default setting 5s. User can use infrared remote control keypad setting.
Relay out
NC and COM: When power off, the lock is opened.
NO and COM: When power on, the lock is opened.

Manager release alarm

When this machine is in stay status if it was opened, the buzzer will sound consecutive long ring. And it will be kept for 1 minute.

Important information

If holes are to be drilled before mounting onto a wall, check for hidden cables and/or pipes before drilling.

1.4 Delete fingerprints

Press [2] [ID number] [#] [ID number] [#]... [ID number] [#] [#]
You can delete one fingerprint or more fingerprint, press [#] end

1.5 Delete all fingerprints

Press [2] [0000] [#]

Note: This will delete all fingerprints, before this operation you need make sure the data is unimportant.

1.6 Setting open door time

Press [4] [XX] [#]

Note: Open door time is the lock keeps time. XX for 0-10s, default setting 5s. If you setting 0s lock keeps time is 50ms. It uses com lock.

1.7 Exit programming mode

When you operation over, you can press [*] exit programming mode. In the programming mode, if you over 1 minute, it will auto exit programming mode.

2 Manager Fingerprint operation modes

2.1 Add user

Press [manager's add fingerprint] + [user fingerprint 1] + [user fingerprint 2] + [user fingerprint N]... [Manager's add fingerprint]

When add user, the fingerprints ID number will auto add from 3-120.

2.2 Delete users' fingerprints

Press [manager's delete fingerprint] + [user fingerprint 1] + [user fingerprint 2] + [user fingerprint N]... [Manager's delete fingerprint]

3 Manager release alarm

When this machine is in stay status if it was be opened, the buzzer will sound consecutive long ring. And it will be keep on 1 minute. While it in the alarm status you can use follow way release alarm.

- Use Infrared remote control keypad, input release alarm password then press [#]
- Use [manager fingerprint], press [managers' fingerprint]

4 User fingerprint mode

In the stay status, press 'users fingerprint', if you have verdant your finger, you can open the door.

Note: When you put your finger on the finger reader, you'd better put it on the place where you verdant.

Resetting to factory default setting

Turn off the power, press the reset key on the PCB, and re-power the device, the F007 will give a beep and is reset to factory default setting.
To revert all settings to the factory default setting, but all of the users' data is safe.

Sounds and light status

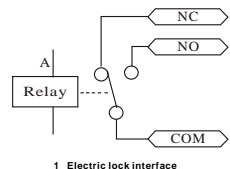
Operation Status	Red led	Green led	Blue led	Buzzer
Resetting	Bright	Bright	Goes out	Consecutive short ring
Power on	Slow flashing	Goes out	-	Short ring

Use safety goggles when drilling or hammering in cable clips.
Every effort has been made to provide accurate information, however slight variations can occur. We also reserve the right to make changes for product improvement at any time.

Intramural interface circuit

Electric lock interface

This machine use relay, which makes sure this part hasn't any connect. When the lock is opened, the relay closed. The relay put out circuit is 2A.

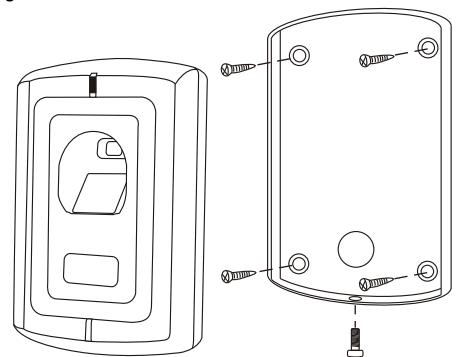


Install, wiring and fixation

- Drill 4 holes on the wall
- Thread the cable through cable hole
- Wiring
- When wiring completed, attach the rear plate to the wall firmly with at least three flat head screws
- Plug the cable harness
- Attach the front cover to the rear plate

Note: Please don't power on before you connect finish.

2 install diagram



Sleeping status	Slow flashing	Goes out	Goes out	-
Stay status	Slow flashing	Goes out	Quickly flashing	-
Voided key	-	-	-	Short ring
Enter programme status	Bright	Goes out	Goes out	Short ring
Programme status	Bright	Goes out	-	-
Input fingerprint instruct	-	-	Quickly flashing	-
Input fingerprint success	Goes out	Bright	-	Long ring
Input fingerprint fail	-	-	-	Three short ring
Exit programming status	-	-	-	Long ring
Open door status	Goes out	Bright	Goes out	Long ring
alarming	Quickly flashing	Goes out	Quickly flashing	Consecutive long ring

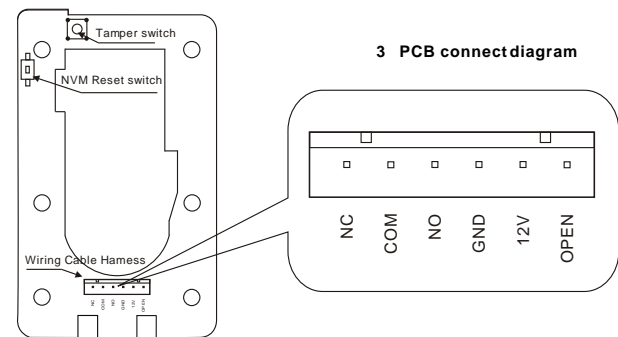
Note: '-' means keep plain state.

Technical Specification

Supply Voltage	12VDC±10%
Sleeping Current	<20mA
Stay Current	<100mA
Door Relay	3A
Temperature	-20℃-60℃
Humidity	20%RH-95%RH
Memory capacity	120
Manager quantity	2
User fingerprint quantity	118
Resolution	450 DPI
Fingerprint input time	<1S
Identification time	<2S
FAR	<0.0001%
FRR	<0.01%
Dimensions	115mm×70mm×35mm
weight	500g

Package Listing

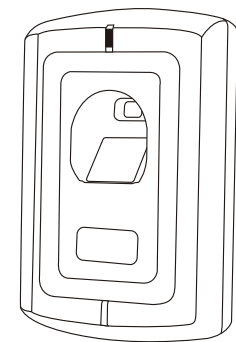
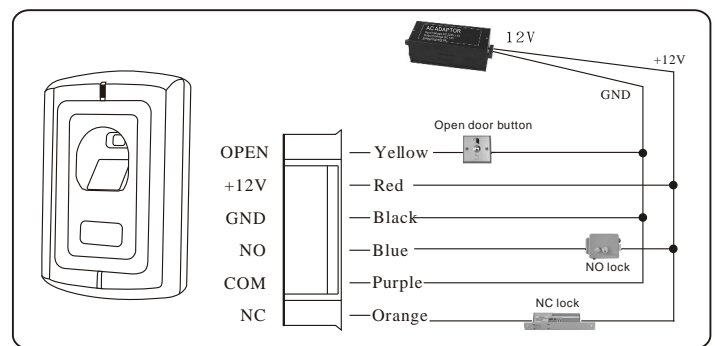
Descriptions	Model no.	Quantity	Remark
Fingerprint & Door Access machine	F007	1	
Infrared remote control keypad		1	
User Manual	F007	1	
Security Screws	Ø3mm×7.5mm	1	Used for front case and back case (spare)
Screw driver		1	
Self tapping screws	Ø4mm×25mm	4	Used for fixing
Pastern stopper	Ø6mm×25mm	4	Used for fixing



Terminal wire connector function

OPEN	Yellow	Open door button
+ 12V	Red	+12V power input
GND	Black	Gnd
NO	Blue	Relay output NO
COM	Purple	Relay output COM
NC	Orange	Relay output NC

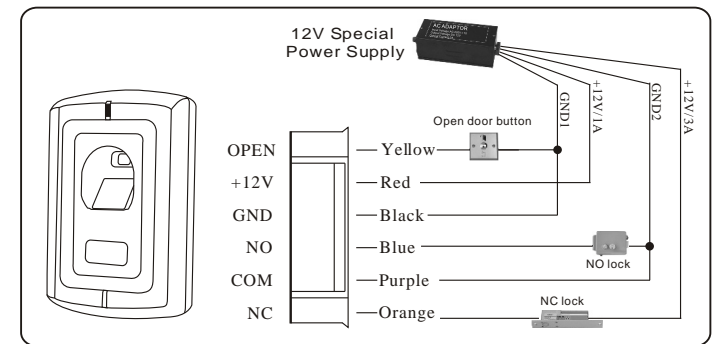
4 Common powers connects diagram



F007

Fingerprint Access controller

5 special power supply



Note: We advise you use special adaptor, it will make your system work more stable.

Power on

When all finished, you can power on. This time the buzzer will give a long ring, and red led flashing. The machine will enter regular work status.

Operation guide

1 Manager enter programming mode (using Infrared remote control keypad)

1.1 Using password enter programming mode

Press [*] + [manager password] + [#]
The supervisor code is 9999 at factory default setting

1.2 Changing manager code

Press [0] + [new password] + [#] + [new password] + [#]
The manager new password must be 4 digit number

1.3 Add fingerprints

Press [1] [ID number] [#] [input fingerprint] [ID number] [#] [input fingerprint]... [ID number] [#] [input fingerprint] [#]

You can add 1 or more fingerprints, and press [#] can end.
ID number is 1-3 digits number, from 1-120.

ID number 1: Manager add fingerprint

ID number 2: Manager delete fingerprint

ID number 3-120: users fingerprint

Note: When you add your fingerprint, please make sure choose your good quality fingerprint. And put it on the finger mode's centre. This can make sure identification is easy.