



The user manual of LED display's RH-64N control card

I: Hardware parameters:

1. The maximum number of points

solid color P10: 64*1024 48*1344 32*2048 16*2048 (4 pieces high and 32 pieces wide; 2 pieces high and 64 pieces wide)

bicolor P10: 16*2048 32*1024 (1 pieces high and 64 pieces wide; 2 pieces high and 32 pieces wide)

bicolor P16: 16*2048 32*1024 (2 pieces high and 128 pieces wide; 1 pieces high and 64 pieces wide)

F3.75 F5 solid color: 64*1024 32*2048 (2 pieces high and 16 pieces wide; 1 pieces high and 32 pieces wide)

F3.75 F5 bicolor: 32*1024 64*512 (1 pieces high and 16 pieces wide; 2 pieces high and 8 pieces wide)

solid color Car screen: 32*1024 16*1024 (2 pieces high and 16 pieces wide; 1 pieces high and 16 pieces wide)

2. Adaptive scope

Single color or double color LED display with different specifications of 1/16, 1/8, 1/4 scan.

3. Number of programs

In support of 256 programs, each can be settled to eight free districts.

4. Communication Mode

Network Communication

5. Supply voltage

Voltage range supported: 4.5V-5.5V

6. Status of indicator light

D5: The power supply lamp, always on with electricity (the light of the control card);

Ethernet interface lamp: green light is on all the time, yellow light flashes.

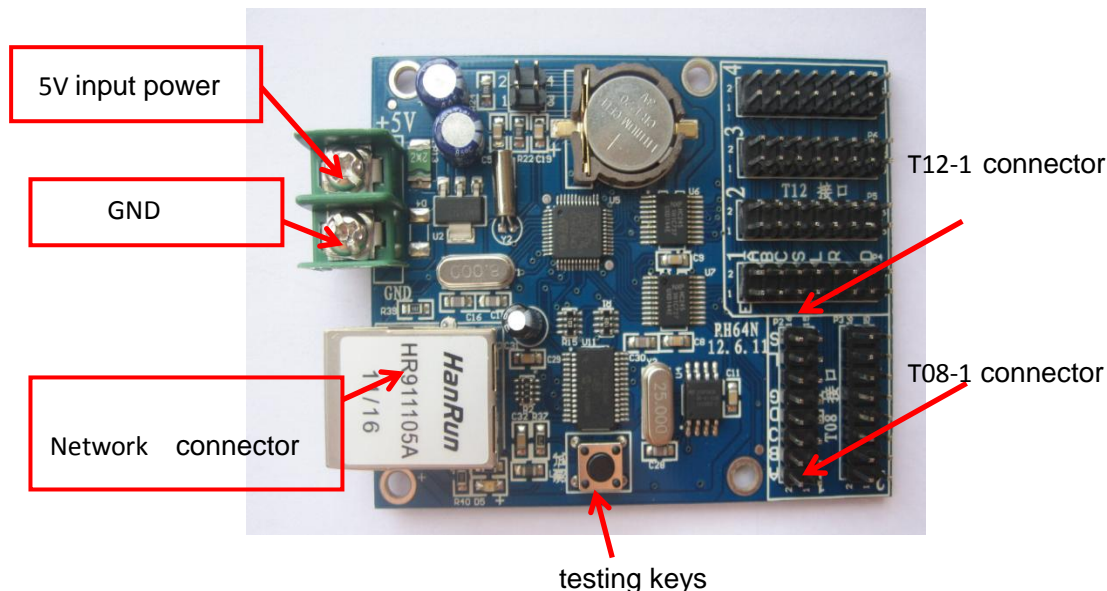
II: Product advantages

Cluster control, unified management, low price



III: The connection of control card and display screen

First: Schematic diagram of control card interface

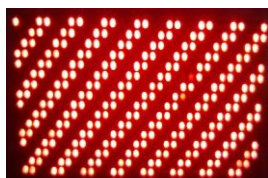


Second: Connection of the control card and display screen hardware

According to the scan mode of display screen, if it is 1/4 scan then connect to T12 port, and if it is 1/16(or 1/8) scan then connect to T08 port. **The first pin between the display screen and control card should correspond to each other when connecting winding displacement.**

After connection above, connect the +5V terminal and GND of the 5V-power supply in indicate screen respectively with the +5V and GND of the control card, and connect the power supply, then press the test button on the control card to test whether there is error with the hardware connection, and by pressing on the test button, the display screen will be switched to a test status.

Test states such as left-hand diagonal, black screen, full bright, right-hand diagonal appear successively.



Left-hand diagonal



black screen



full bright



right-hand diagonal

If not, please check winding displacement connection and display screen.

IV. Network communication



There are two types of network communications-LAN and WAN, next we will introduce the LAN communication.

Direct cable connection: Both ends of the cable are 1, 2, 3, 6.

Cross ruling connection: one end of the cable is 1, 2, 3, 6, and the other end is 3, 6, 1, 2.

Crossover cable is needed for connecting the control card directly with laptops while both straight and crossover cables can be used to connect the control card with desktops.

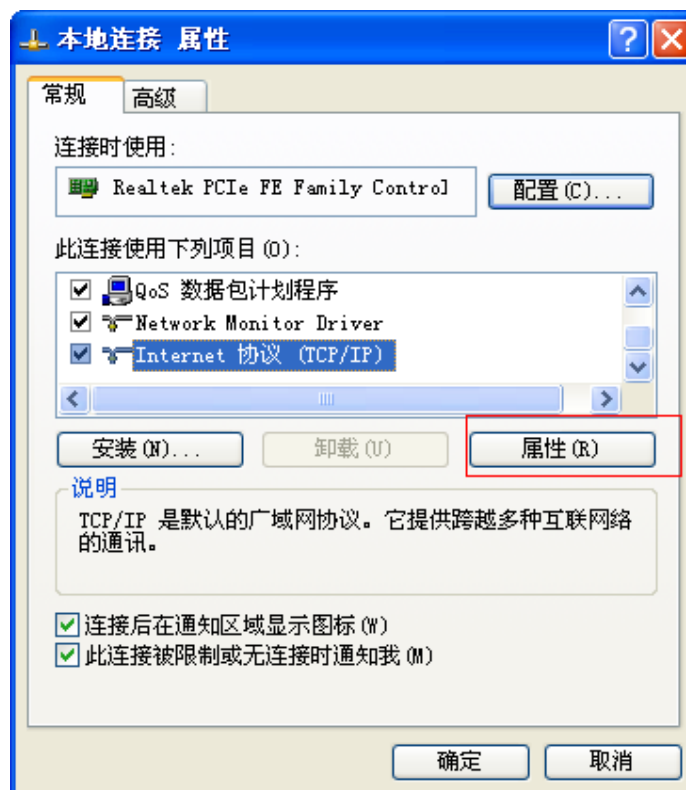
Note: if the computer is dual-NIC, you must choose the local connection IP, if another network card is Wi-Fi, you must stop using Wi-Fi before send program.

64N connection can connect directly with computer as well as router and interchanger.

1. Steps of directly connection between 64N and computer:

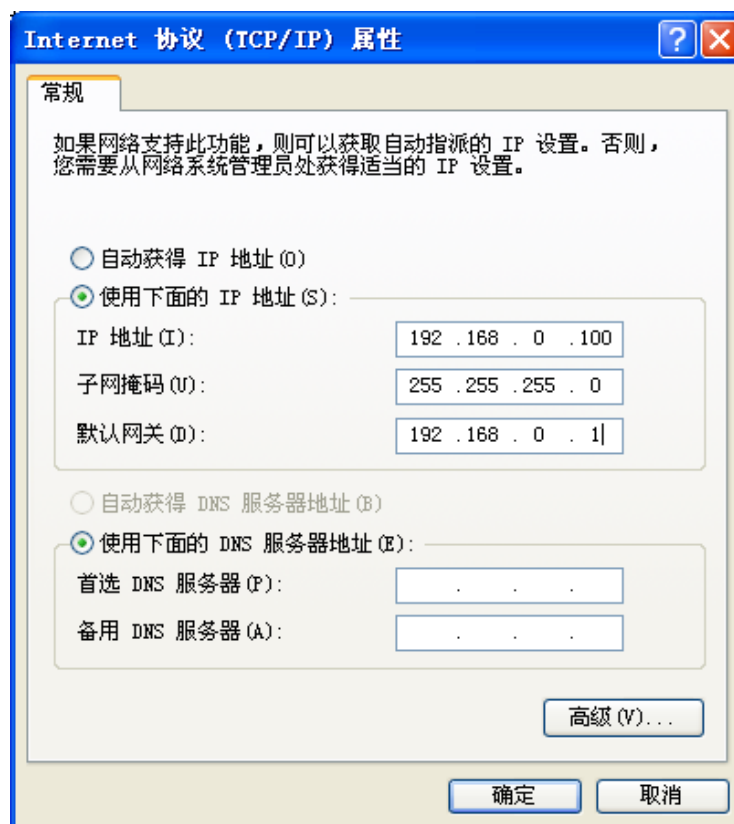
Step 1: Set up the computer IP

Right click on the network neighborhood-----Properties, right click local connection in the popup dialog. -----attribute, the following dialog box appears:



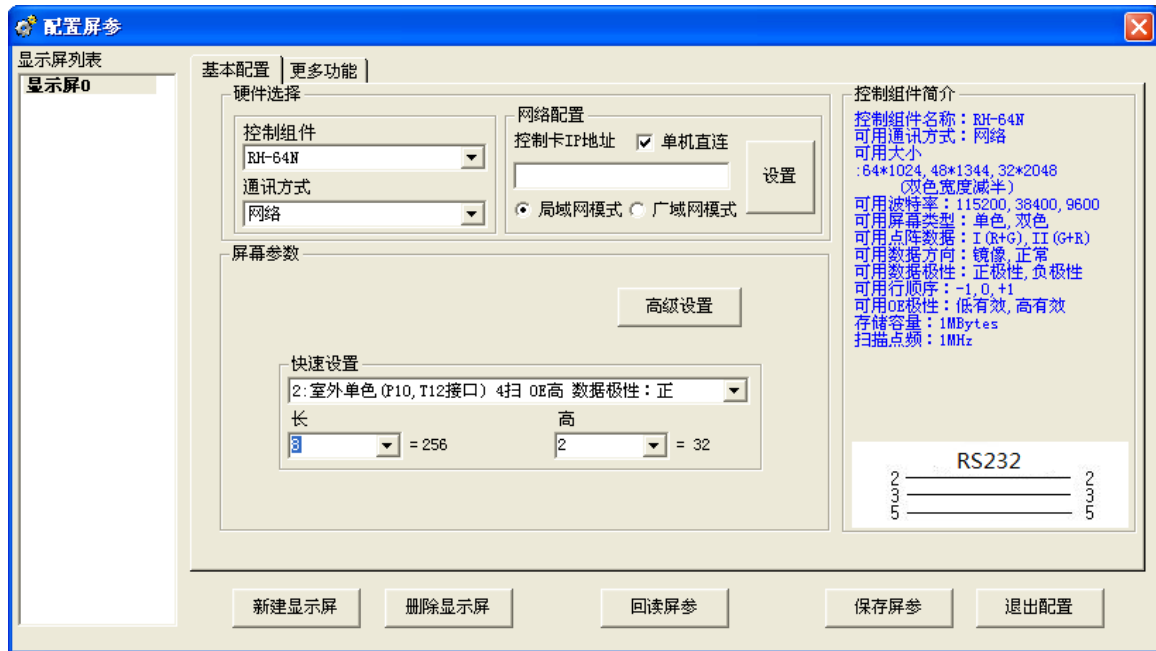


Select Internet Protocol (TCP/IP), click properties, configure computer IP as the following figure, then click confirmation.



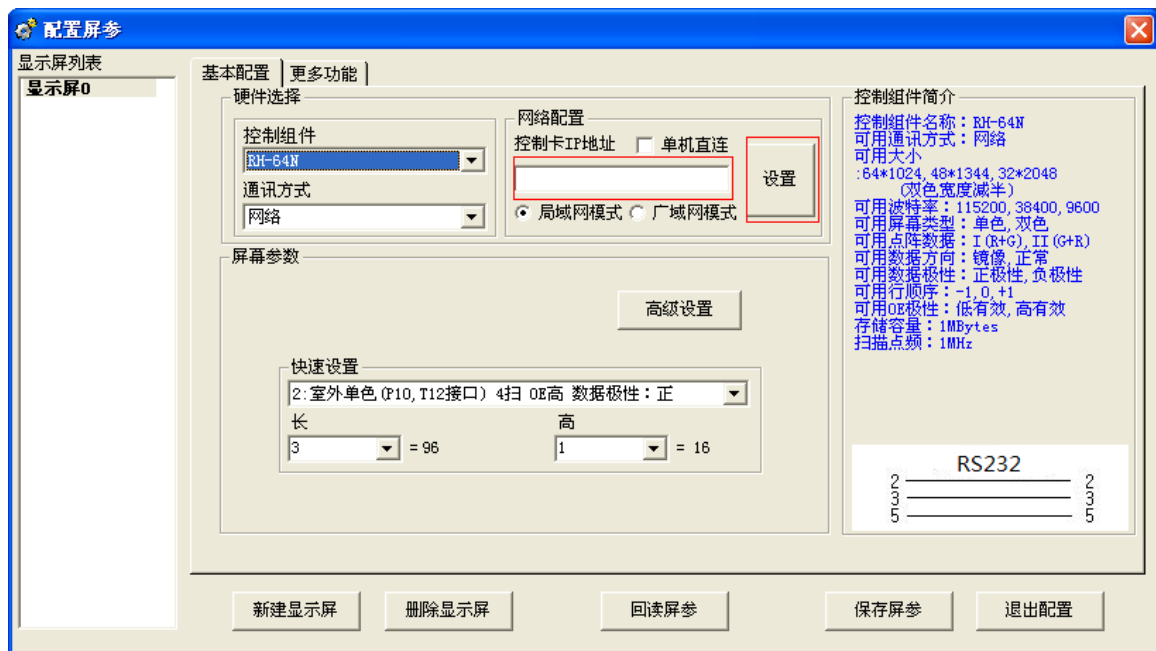
Step 2: Setting screen parameter

Control Card and Display Screen, directly connect the computer's Ethernet port by a cable, open software, click screen parameter setting, input password **888**. Access the interface of screen parameter setting, choose the **RH-64N** control assembly, choose the **network communication**, as the following figure: choose LAN model, now the IP address of control card is empty, check click connect, adjust to display screen parameters, click "save screen parameters", then the screen parameter setting of control card is completed. Then add program-- click subtitle, text or time option, edit corresponding contents to finish the program, and click the send button.



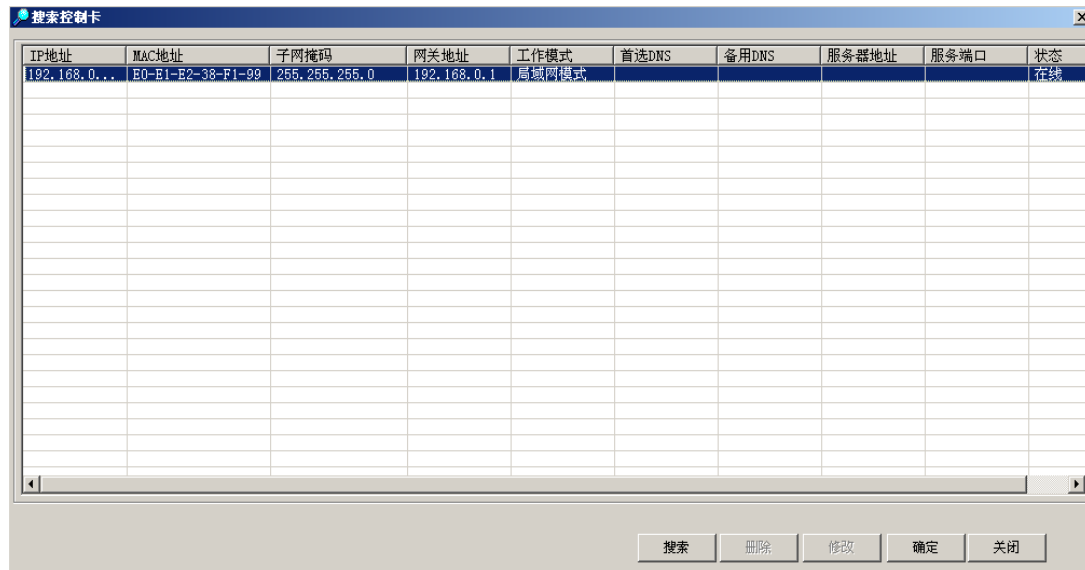
2. Directly connected to the computer through a router or switch control card, using **LAN mode** setup steps.

If the computer's gateway is 192.168.1.1, it is necessary to change the control card's IP; else set the computer to automatically obtain IP .choose to click LAN model instead of directly connect, then the IP address of control card would be empty, here click the setting option.

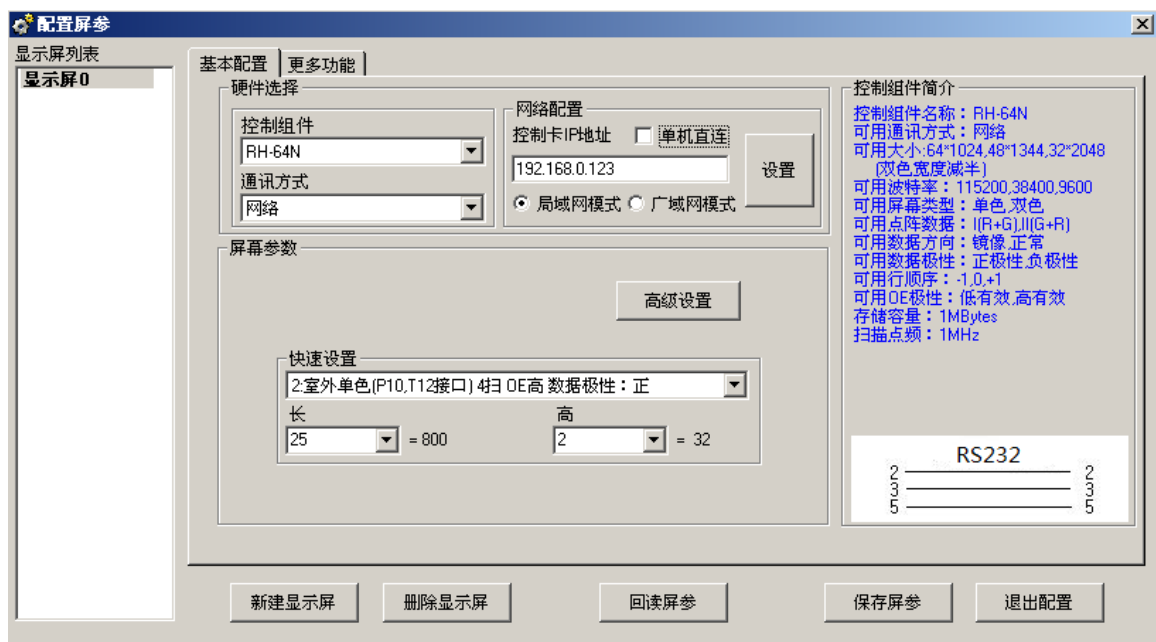


When you enter the control interface of IP settings and click "search",

the following dialog box will appear:



Double-click IP address can change the control card's IP, click OK button when it finished, and then the IP address of control card will show up on the screen parameter setting interface.

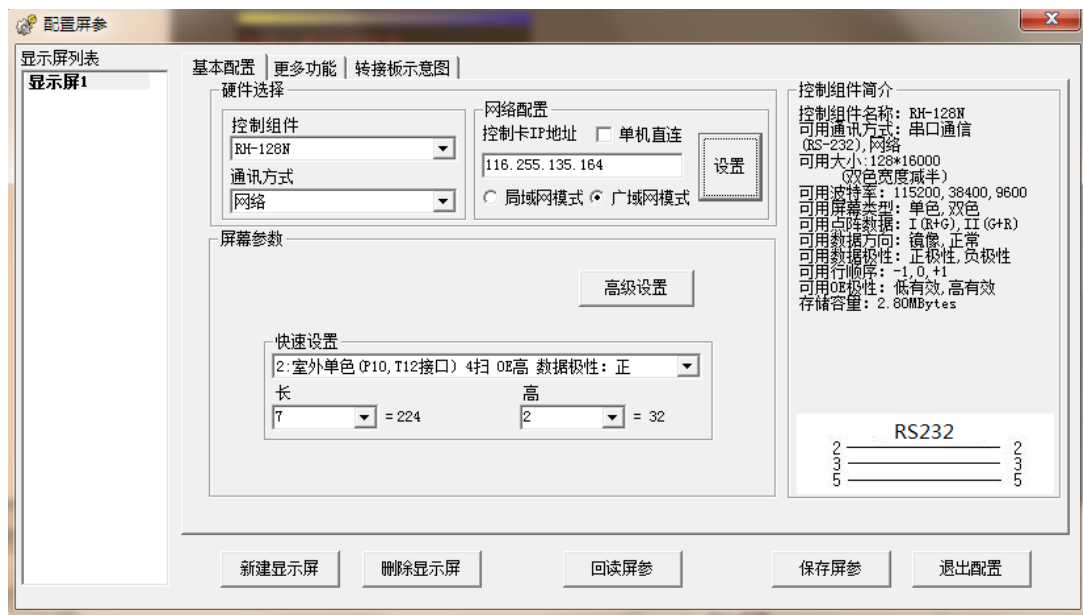


According to current height of display screen used, you should set the screen parameters by width, OE polarity, data polarity, scanning mode.

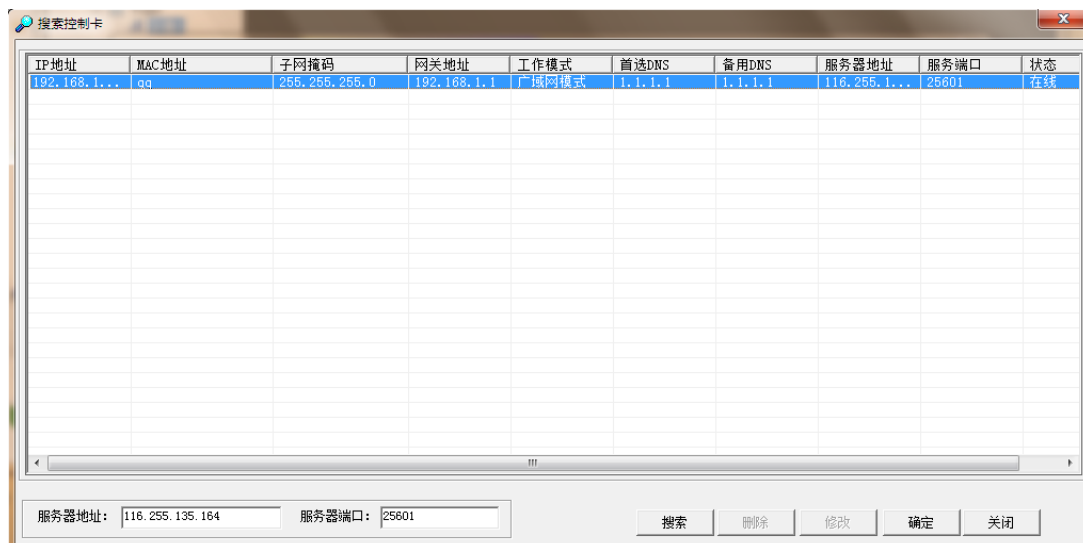
3. Control card connects with router or exchanger directly, using WAN mode.



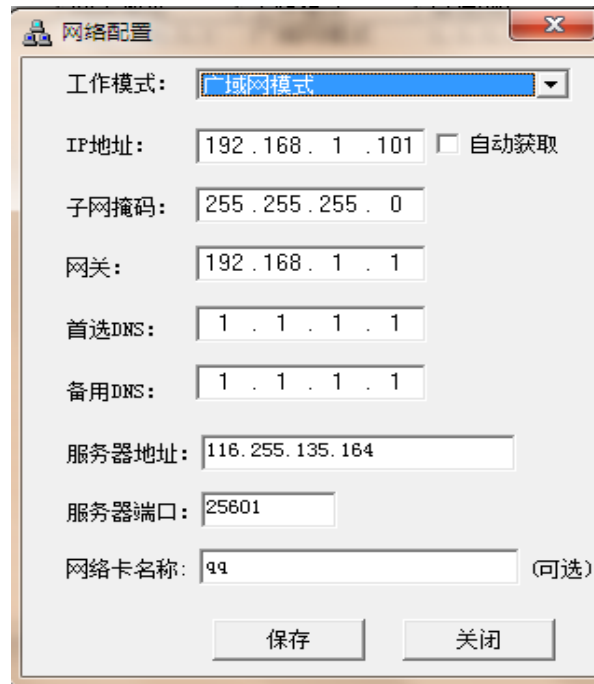
First connect the control card to the same network segment as the computer through a switch or a router, select the wide net mode



Click set up and enter the next dialog box, click search:



Double click the working mode, change the working mode to WAN(Wide area network) mode, change the server address to 116.255.135.164 Port number:25601. You can change the name of network card, but you need to record the MAC address before change which will be used when you add new numbers after you press send.



网络配置

工作模式: 局域网模式

IP地址: 192.168.1.101 ☐ 自动获取

子网掩码: 255.255.255.0

网关: 192.168.1.1

首选DNS: 1.1.1.1

备用DNS: 1.1.1.1

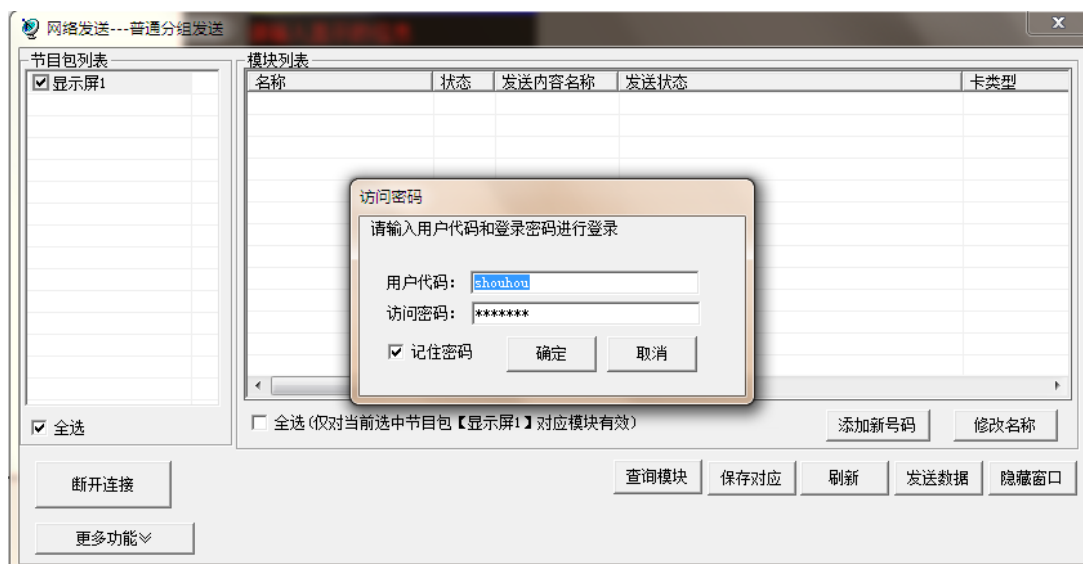
服务器地址: 116.255.135.164

服务器端口: 25801

网络卡名称: qq (可选)

保存 关闭

After setting up and editing program, click send and log in account



网络发送---普通分组发送

节目包列表

- ☒ 显示屏1

模块列表

名称	状态	发送内容名称	发送状态	卡类型
----	----	--------	------	-----

访问密码

请输入用户代码和登录密码进行登录

用户代码: shouhou

访问密码: *****

☒ 记住密码 确定 取消

☒ 全选 ☐ 全选 (仅对当前选中节目包【显示屏1】对应模块有效)

添加新号码 修改名称

断开连接 更多功能

查询模块 保存对应 刷新 发送数据 隐藏窗口

If the MAC address is: E0-E1-E2-B2-74-DE.

Don't fill the network card name, add number: E0-74DE; fill the MAC address as network card name, add number: E0-74DE+MAC address. If the network name added is incorrect, status will be offline.

Thank you for using "the RH-64N control card of Zhengzhou Ruihexin". If you have any technical questions with the control card that can't be resolved, please do not hesitate to contact us.

Technical support: 15238080525 18037131927 18037891691 18037891692