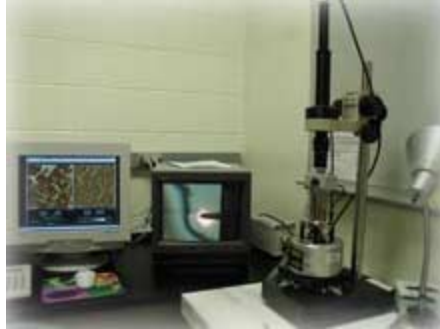


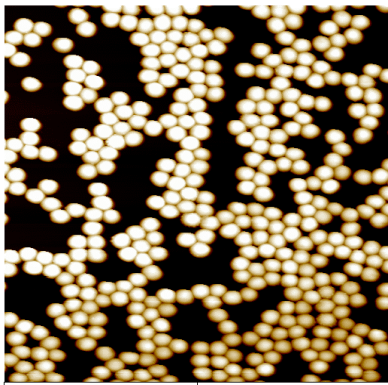
Di gi tal I nstruments Mul ti mode User Manual



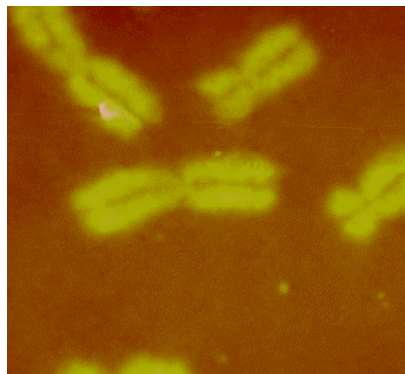
NI FTI USER FACI LITY

Dr. Gajendra Shekhawat
Manager

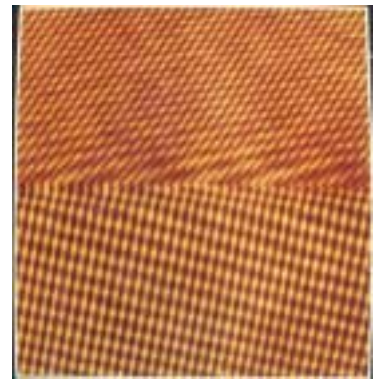
Prof. Vinayak Dravid
Director



ZnS Q.D. in Air



**Human Chromosomes
in Liquid**



**Si/SiO₂ Interface
in Vacuum**

Contact Mode AFM

Advantages:

- High scan speeds (throughput)
- Contact mode AFM is the only AFM technique, which can obtain "atomic resolution" images.
- Rough samples with extreme changes in vertical topography can sometimes be scanned more easily in Contact mode.

Disadvantages:

- Lateral (shear) forces can distort features in the image.
- The forces normal to the tip-sample interaction can be high in air due to capillary forces from the adsorbed fluid layer on the sample surface.
- The combination of lateral forces and high normal forces can result in reduced spatial resolution and may damage soft samples (i.e., biological samples, polymers, silicon) due to scraping between the tip and sample.

Tapping Mode AFM

Advantages:

- Higher lateral resolution on most samples (1 nm to 5 nm).
- Lower forces and less damage to soft samples imaged in air.
- Lateral forces are virtually eliminated, so there is no scraping.

Disadvantages:

- Slightly slower scan speed than contact mode AFM.

Scanning Technique with Multimode SPM

Contact AFM— Measures topography by sliding the probe's tip across the sample surface. Operates in both air and fluids.

Tapping Mode™ AFM—Measures topography by tapping the surface with an oscillating tip. This eliminates shear forces, which can damage soft samples and reduce image resolution. Tapping Mode is available in air and fluids (patented). This is now the technique of choice for most AFM work.

Phase Imaging— Provides image contrast caused by differences in surface adhesion and viscoelasticity. Requires an Extender™ Electronics Module (patent pending).

Non-contact AFM— Measures topography by sensing Van der Waals attractive forces between the surface and the probe tip held above the surface. Provides lower resolution than either contact AFM or Tapping Mode.

Magnetic Force Microscope (MFM)— Measures magnetic force gradient distribution above the sample surface. Performed using Lift Mode to track topography (Extender Electronics Module recommended).

Electric Force Microscope (EFM)—Measures electric field gradient distribution above sample surfaces. Performed using Lift Mode to track topography.

Surface Potential Microscopy— Measures differences in local surface potential across the sample surface. Performed using Lift Mode to track.

Lift Mode™— A combined, two-pass technique that separately measures topography (using Tapping Mode) and another selected property (e.g., magnetic or electric force), using the topographical information to track the probe tip at a constant height above the surface (patented).

Force Modulation— Measures relative elasticity/stiffness of surface features (patented). Force modulation is only one of several types of force imaging which are possible.

Lateral Force Microscopy (LFM)— Measures frictional forces between the probe tip and sample surface.

Lithography— Use of a probe tip to mechanically scribe or indent a sample surface. May be used to generate patterns, test surfaces for micro hardness, etc. Performed using AFM and STM.

Six Rules of Safety

Read the manuals!

Even if you have prior experience with the MM-SPM, be sure to read this manual before doing any imaging work.

Follow good “rules of engagement.”

“Engagement” refers to the process of bringing the tip and surface together. This is harder than it sounds, and the software routine for controlling the process is complex. Some probes (especially crystal silicon Tapping Mode™ probes) are prone to breakage if engaged too quickly or too hard. Ensure that engagement settings never exceed the limits of safety and never attempt to engage manually using coarse adjustment screws.

Never move the head while imaging

The head contains the tip holder, laser and photodiode array. An X-Y translation stage is provided for moving the head and tip several millimeters across the sample for coarse adjustment. Even for relatively smooth samples, the head should NEVER be moved with the tip engaged. This almost always results in tip breakage. Always disengage first before using the X-Y stage to move the tip.

Never leave your controller ON while the computer is turned OFF

Operators are advised to turn OFF their controller when finished the aging. If the controller is left ON for an extended period without an

energized computer, damage to the scanner may result. (This is especially true if the scan has been heavily offset in X and Y.)

Do not unplug cables to/from energized hardware. Turn OFF first

Unplugging energized hardware is not recommended and may result in damage to the MM-SPM. Always turn OFF hardware before making connections.

Check all connections before hardwiring external equipment

External equipment, which is hardwired into the MM-SPM, such as for EFM and ECSTM imaging, requires special cautions. To prevent damage to your microscope, always check connections carefully against documentation before energizing the system. For more information, **contact manager**.

Preparing to Start

- 1. Login to the system and sign in to login sheet.**
- 2. Sample Preparation:** Verify that your sample will fit atop the scanner tube and is less than 8 mm thick. Peel off a “sticky tab” from the provided sheet or carbon tape, and place it on the steel small sample puck, then peel off the white paper. This leaves a patch of the two-sided adhesive on the steel sample disk, which will hold the sample chip to the disk. Using tweezers, place the small sample to be imaged firmly on the “sticky tab” adhesive. Place the small sample disk atop the scanner.
- 3. Load the probe into cantilever holder.** For contact AFM, install a silicon nitride probe tip in the AFM tip holder. Ensure the gold-plated side of the substrate is placed down towards the substrate mount, with the nitride film side attached to the cantilever oriented up away from the substrate mount. The procedure for installation of Tapping Mode, single crystal silicon probe tips is essentially the same as for contact AFM (see above paragraph). The substrate should be face-up, with the probe's cantilever pointing away from the AFM Tip holder. This ensures that the cantilever and tip are facing toward the sample once the tip holder is mounted in the head.
- 4.** Turn the tip holder upside down with the groove facing up as shown. Apply gentle upward pressure against the plunger to lift the spring clip. With the spring clip lifted, carefully slide the probe into the tip holder's groove until it is located squarely against the innermost edges, and then lower the spring clip by releasing pressure against the plunger. This will hold the probe securely in the tip holder's groove. Check that the probe's substrate is flush with the back of the groove and flat against one side (this keeps the probe's cantilever oriented in the correct direction).
- 5. Turn on the SPM controller, CCD monitor and the light source.** Place the tip holder in the SPM head and clamped into position. First, verify that the head is sufficiently raised to clear the sample with the tip. (The top of the sample should protrude no more than 1-2 mm above the plane of the head's bottom hole.) Insert the loaded AFM tip holder into the Multimode head

by lifting the tip holder care-fully over the sample. Do not touch the sample with the tip holder. Press gently forward, and then lower the tip holder. Three precision ball mounts inside the head mate kinematically with the tip holder's underside. If the scanner cap has been properly positioned, the tip holder will come to rest with the probe just above the sample surface. If the scanner cap is adjusted too high, the tip will be plunged into the sample surface and broken. If it appears the probe may crash when the tip holder is installed, remove the tip holder completely and use the tip **Up** toggle switch to obtain sufficient clearance. It is recommended that beginners practice with scrap probes and samples to learn proper loading procedures.

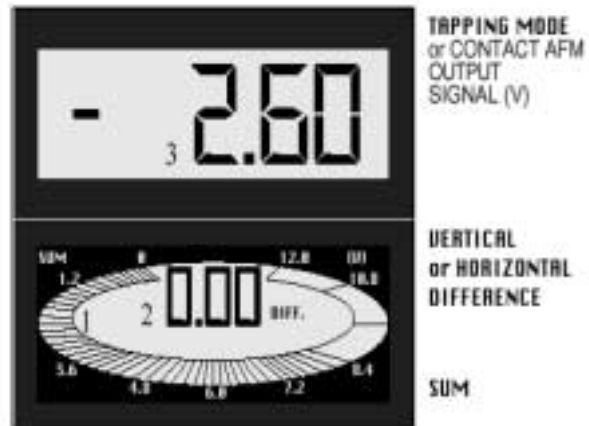
6. **Laser alignment:** Before beginning, verify that the mode switch on the MultiMode SPM's base is switched to **AFM & LFM** or **TM AFM**. If the switch is toggled to **STM**, the laser will be turned off. Using the magnifier, focus the objective on the sample surface. Bring the cantilever in close proximity to the sample surface by pressing the toggle switch in the down direction until you see very small gap between tip and sample with your eyes.
7. Locate the shadow of the cantilever by moving the magnifier X and Y positioner. Make sure that the cantilever should not be very closed to sample surface, so reflections off the sample do not make it hard to locate the cantilever. **Identify the key features:** There are many laser light reflections, particularly from the tip holder, the sample, and various metal surfaces. It is helpful to identify the key features before starting the alignment.
8. Position the laser spot on the substrate. The laser spot can be moved around with the two positioning knobs on the top of the head. With the X positioning screw, move the spot so it is on the cantilever substrate. This is easy to see with the silicon nitride cantilevers because the glass substrate will glow and there will be a lot of diffused red light scattered around the internal area of the head.
9. While observing the substrate through the magnifier, slowly move the laser spot lengthwise along the substrate with the X-axis positioning screw until the spot is barely off the edge of the substrate. Then move it along the edge in Y direction. Very small movements of the positioner are enough to pass over the cantilever, so move slowly with small motions. When the spot is at the base of the cantilever, move again in X direction (anti-

clockwise) with the help of know to place the laser on the triangular region of the cantilever.

10. Use the paper method to fine-tune the laser on the cantilever for maximum sum signal.
11. **Contact AFM:** Once the laser beam is aligned with the cantilever, it is necessary to position the photodiode relative to the reflected spot. This is done by first adjusting the mirror lever on the rear of the head, then adjusting the photodiode adjustment knob such that the SUM signal displayed on the elliptical bar graph is maximized. If the laser beam has been properly aligned, the maximized SUM signal should be over 4 volts with gold-coated silicon nitride cantilevers. If this is not the case, check the alignment of the laser beam. **Tapping Mode:** For Tapping Mode, the microscope toggled to **TM AFM** mode (the LED on the face of the MultiMode base should be green), use the mirror lever on the rear of the head and the photodiode adjustment knob to maximize the SUM signal displayed on the elliptical bar graph, and zero the top/bottom differential signal which is shown on the lower LCD display. If the range of movement of the photodiode stage is inadequate to accomplish this, adjust the mirror angle with the lever in the back.

12. **SPM voltmeters:**

The MultiMode SPM's bottom, elliptical (**SUM**) meter indicates the total voltage generated by the photo detector. That is, the combined voltage of photo detector segments. This is displayed during all modes (except STM when all meters are off). The bottom digital meter



2 reads *differences in voltage between various segments of the photo detector*. With the mode switch toggled to **AFM & LFM**, it indicates the voltage difference (C - D), that is, the left segments minus the right segments. With the mode switch toggled to **TM AFM** (Tapping Mode), it indicates the voltage difference (A - B), that is, the bottom segments minus the top segments. The topmost digital meter 3 indicates the *output*

signal of the SPM. Depending upon the mode selected, the topmost meter reads either the (A - B) voltage difference (mode switch toggled to **AFM & LFM**), or the RMS voltage (mode switch toggled to **TM AFM**).

13. The maximized value of the SUM signal should be approximately **5.0—9.0 Volts** for silicon nitride cantilevers and **3.0-6.0** for Si cantilevers. The value of this signal varies with many factors. It is important to note that it is possible to see a large response on the elliptical bar graph without having the laser beam on the cantilever, so it is important to visually verify that the laser beam is on the cantilever and not rely on the elliptical bar graph alone. Attempting to engage with the laser beam improperly aligned will usually destroy the cantilever.
14. In **contact mode**, use the **bottom knob** of the photodetector to make difference signal zero and **top knob** to make probe signal around -2 to -3 volts. For **tapping mode**, use Y knob of photo detector to make difference signal zero and allow the software to adjust the RMS amplitude (probe signal). The RMS amplitude should be greater than 1.8 for better results.
15. **Starts the microscope program:** Select the contact or tapping mode by a single click on the **profile** in the main menu and from there click on **microscope select**. There are various options with Multimode and click on the mode, which you want to use and then load it. Do not forget to change the mode you want to use in the **other control** also. Simply click there and hold the mouse button and then select.
16. Before start, bring the cantilever as close as possible to the sample surface using two simple ways. In first method, if you surface is shining, then you can easily see the cantilever reflection and by pressing the toggle switch to down position, you can bring it very close. If you surface is not much reflective, then you can adjust by first focusing the sample surface and then focus the cantilever surface. If you can focus both sample and cantilever by slight twist of the magnifier knob, you are pretty close.

Contact Mode Operation

17. Set the set point voltage to about **0.5-1.5V** initially and it is better to change that after looking at your images. Scan size should be around **5 microns** or less, scan rate around **1-2 Hz** and off set to almost zero. Scan angle should be zero. This will prevent from damaging the cantilever when it first lands on the surface.
18. Integral gain around 0.5-2, proportional gain around 0.7-2.2. It is up to user to choose channel 2, which will be either deflection in contact mode or amplitude/phase in the tapping mode. Scan line should be trace in channel 1 and retrace in channel 2. When starting set the **Number of samples** to **256** to expedite setup; later, the value may be increased to **512** for better image clarity. Make sure the **Slow scan axis** is **Enabled**.
19. In other control panel, make sure that contact mode is selected. This can be done by click and holding the microscope mode and then slide the cursor to contact and select it. Interleave mode should be disabled.

20. Other Controls

- **X Offset, Y Offset:** Translates the scan area in X and Y directions without changing scan size *Note:* The **Zoom** and **Offset** commands found on the display monitor may also be used to change the scan size and X and Y offsets.
- **Scan Angle:** Controls the angle of the fast scan direction of the scanner with respect to the X-axis. Use scan angle if your surface has high and low features.
- **Samples/line:** Determines the number of data points or pixels in X and Y (128, 256, or 512)
- **Slow Scan Axis:** Enables and Disables movement of the scanner in the direction of the slow scan axis. (Y direction at 0° Scan Angle)
- **Data Type:** Selects the signal viewed on the display monitor - this parameter is set to Height for topographical measurements
- **Line Direction:** Selects the direction of the fast scan during data collection: Trace (left to right) or Retrace (right to left).
- **Data Scale:** Controls the vertical scale of the full height of the display and color bar. This parameter does not effect the

real-time operation of the microscope, only the expansion and contraction of the color scale.

21. Go to the user-friendly icons and click on the engage icon (first one from left). A pre-engage check, followed by Z-stage motor sound should be observed. If for any reason the engage aborts because the SPM head is still too far away from the surface, click on the **Abort** button (second icon from the left) and readjust the screws to start the tip closer to the sample surface.
22. Once the tip start scanning you can set the gains and set point voltage to get good quality images. **Gain settings:** The **Integral** and **Proportional** gains in the **Feedback Controls** panel control the feedback on the piezo height. The feedback loop tries to keep the deflection signal constant by adjusting the height of the piezo tube. Generally, the **Integral** and **Proportional gain** can be set to **0.5–3** to start scanning. To optimize the gains for height data, increase the **Integral gain** until the piezo begins to oscillate, then eliminate the oscillations by reducing the gain with two or three clicks of the left-arrow key. Repeat the process for the **Proportional gain**. Piezo oscillations typically cause high frequency wavy lines in the Real time image.
23. In contact AFM, increased **Set point** yields higher tip-sample forces. The **Set point** can be adjusted to increase or decrease the cantilever deflection and, therefore, the contact force of the tip on the sample. The best way is go in the scope mode by clicking **view/scope** (or click on scope icons). Check to see if **Trace** and **Retrace** are tracking each other well (i.e. look similar). If they are tracking, the lines should look the same, but they will not necessarily overlap each other, either horizontally or vertically.
 - If they are not tracking well, adjust the **Scan Rate**, **Gains** and/or **Set point** to improve the tracking. If Trace and Retrace look completely different, you may need to decrease the set point one or two clicks with the left arrow key until they start having common features in both scan directions. Then, reduce **Scan Rate** to the lowest speed with which you feel comfortable. For scan sizes of 1-3 μm try scanning at 2Hz; for 5-10 μm , try 1Hz; and for large scans, try 1.0-0.5Hz. Next, try increasing the **Integral Gain** using the right arrow

key. As you increase the Integral Gain, increase the **Proportional Gain** as well (Proportional Gain can usually be 30-100% more than Integral Gain). The tracking should improve as the gains increase, although you will reach a value beyond which the noise will increase as the feedback loop starts to oscillate. If this happens reduce the gains until the noise goes away. Choose **View/Image Mode** (or click on the Image Mode icon) to view the image.

24. Look at the Z center position on the bottom of the image screen. It should be near to the center and stable. Do not scan for enough time if higher Z voltage is applied to the piezo. This may damage the piezo. Set point voltage will be helpful in adjusting the Z center voltage. If that does not work, then withdraw it and slightly move the laser inwards and again start scanning.
25. If the Z center is fluctuating, then the image will be unstable. This happen when you have not adjusted either your set point properly, misaligns the laser or cantilever has picked up some dust on it.
26. **Scan size and Scan rate:** **Scan rate** must be decreased as the **Scan size** is increased. Scan rates of 0.5—1 Hz should be used for large scans on samples with tall features. High scan rates help reduce drift, but they can only be used on very flat samples with small scan sizes. Sometimes higher san rate also pick up the acoustic noise.
27. **Important note:** If you are encountering lot of noise in the image, you can reduce that by aligning the laser slightly backwards from its end. But going too far will hurt your images as cantilever has higher deflections only at its edge.

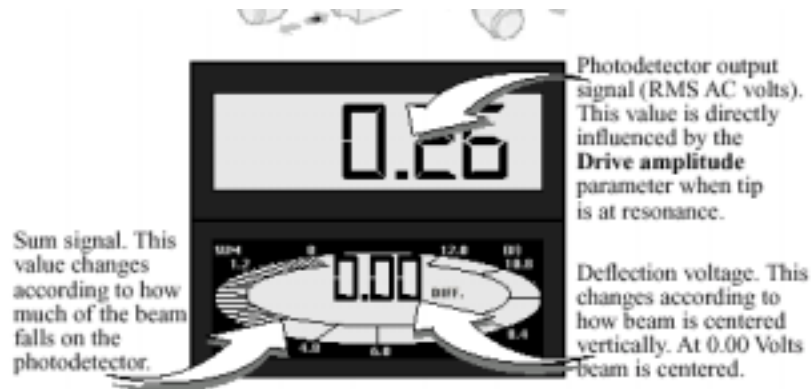
Tapping Mode Operation

28. **Switch to Tapping Mode and check parameters.** The microscope must be switched to Tapping Mode. Go to the **Real Time /Other Controls** panel and set the **AFM mode** parameter

to **Tapping**. Toggle the selector switch on the left side of the MultiMode base to **TM AFM**; the tiny LED indicator on the front of the base should glow green. You can also go to profile in main menu, then microscope select--→Tapping mode--→Load.

29. Use Si tips for tapping mode. Align laser and photo detector.

Align the laser to maximize the sum signal and adjust the detector **top knob** to make difference signal



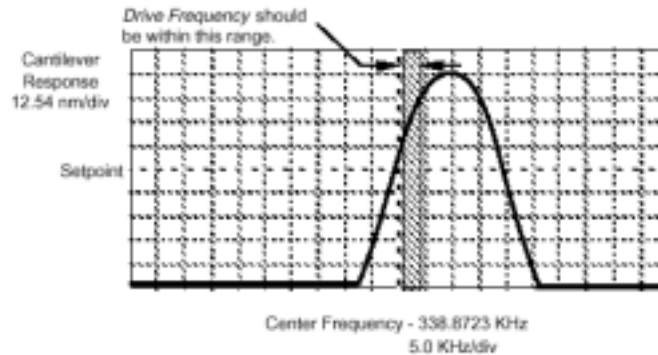
zero. The top signal in voltmeter reading now is the RMS amplitude of the cantilever. RMS amplitude is an AC signal, which does not have any real meaning until cantilever tuning is completed. The laser spot will need to be approximately centered prior to entering the **Cantilever Tune** routine. **The RMS signal will show up when you tune the cantilever. Do not change that until you start scanning.** The difference signal in tapping mode can be made zero using the X knob of the photo detector.

30. Use the cantilever tune icon to tune the cantilever. The frequency sweep (a plot of cantilever response as a function of applied vibrational frequency) will be displayed on the monitor. The two main panels, **Sweep Controls** and **Auto Tune Controls**, allow the operator to either manually or automatically tune the cantilever. For most purposes, the **Auto Tune** function will suffice. To tune the cantilever automatically, simply click on the **Auto Tune** button; the computer and controller will do the rest, setting such parameters as **Set point** and **Drive amplitude** automatically.



31. The **Drive frequency** selected to oscillate the cantilever plays an important role in the performance of the microscope while in Tapping Mode. As a first step it is important to

determine the resonance frequency of the cantilever, but the Drive frequency should be further tuned to improve scanning performance. It has been



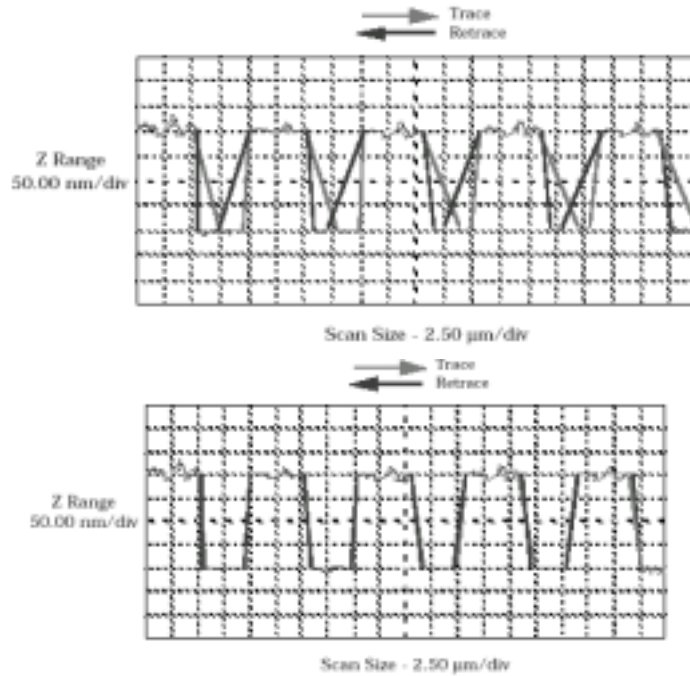
determined that the microscope produces better data in TappingMode when the Drive frequency is set lower than the resonance peak of the cantilever. The Drive frequency should be set such that it coincides with a 10 percent decrease in the vibration amplitude. Figure shows the suggested operating region. It should be noted that this is a suggestion based on our observations; users are certainly encouraged to experiment with the microscope and decide what produces the best results.

32. Generally target amplitude is set at **2.5 V** and frequency is offset by **5%**.
33. Click the cantilever tune window by pressing the **back to image button** and the parameters set in the **Cantilever Tune** control panel will now appear in the **Feedback Controls** panel. The value of the RMS amplitude displayed on the laser signal display will now hold steady at the amplitude that coincided with the selected **Drive frequency**. After the microscope is engaged, the RMS amplitude value displayed on the display monitor will match the **Set point** parameter specified in the **Feedback Controls** panel.
34. Feedback gains should be kept little bit higher before scanning. Integral gain should be around 1-2 and proportional gain will be approximately 25 percent more than integral gain. Once the tip starts scanning they can be reduced while looking at the scope mode. Higher set point in tapping mode means lower forces are applied to the sample while lower set point amplitude means higher forces are applied.
35. You can now engage and start the scanning as explained in earlier sections. For harder samples, apply higher contact forces so the response time can be improved by lowering the Set point

amplitude. Soft samples that are relatively flat should be run with higher Set point values to reduce the energy imparted to the sample. In general, the solution to the problem is to decrease the scan rate and increase the feedback gains. In some situations, the feedback gains cannot be increased without causing piezo oscillations; in such cases there is no choice but to reduce the scan rate.

36. The quality of the image can be drastically improved if you

use the scope mode to set your scan parameters. **Scope Mode** can be very useful when setting scan parameters. As the tip descends, features can be evaluated by comparing the **Trace** and **Retrace** in the Scope Mode. The effects of poorly selected scan parameters on calibration



standards that include a series of sharp-walled pits. Regardless of the scan direction, the tip does not track the wall of the pit when the tip encounters a pit. It does, however, track the surface closely when moving out of the pit. This can be improved to better one (shown in figure) if you **reduce the scan size, increase the gains and also changing the set point amplitude.**

37. You can minimize the acoustic noise in the images by aligning the laser in the middle of the cantilever.

38. Once good images appear on the screen you can capture them in the real time. First go to the main menu and click on **Capture→Capture filename**. Type in your file name and again click on capture (or click on the **camera icon**). You will see a capture ON command on the bottom of the screen. It will show done once capture is finished.

39. If you change any parameters while capture is in progress, it will then capture next image. But you can force to capture that image by clicking on capture (or camorra icon) again. Image once captured are stored in temporary buffer and you can process is later on. **See details in image analysis manual for analyzing your images.**
40. Images can be started from the bottom and top region of the screen by clicking on the frame down and frame up icons respectively.
41. **Zoom:** The software also allows you to perform real time zoom in. The zoom in command is located on the **image monitor**. Simply click on **zoom in** and a square box will appear. The size of the box can be adjusted using left click of the mouse and it will be set by right click of the **mouse button**. The click on **executes**. Zoom is very useful if you want to zoom on a specific region of the image.
42. While you are scanning, you can toggle between real time and off-line mode. Offline mode is for image analysis.

43. Once you are done, withdraw the cantilever couple of times by clicking the icon next to the engage icon. Then you do further withdraw it by pressing the toggle switch in the up position. Before taking out the cantilever holder from the head, make sure that you have sufficient gap between the tip and the sample.
44. Loosened the tip holder knob located on the backside of the head and remove the head gently. Take out your sample without doing any scratch on the piezo. Switch off the controller, monitor and light source. Exit the DI software.
45. Place the things in ordered and sign on the log sheet and then log out. If you encountered any problem during your scanning, please let the manager know about the problem or you can just put in the remarks.

Trouble Shooting

Contact Mode AFM with False Engagement

- Incorrect optical alignment of laser spot on cantilever. This alignment will cause a greater amount of laser light to reflect off of the sample. The sample has a region on it that touches the cantilever before the tip does.
- Foreign material stuck on the cantilever beam that is lower than the tip.
- Check the cabling between the computer and the controller, and between the controller and the microscope. Any discontinuity in the microscope signals can cause an immediate engage.
- The **Set point** may be set more negative than the vertical deflection (A-B) voltage (this applies only to contact AFM modes). This false engagement is immediate and the computer will not show any motor travel or time delay after one gives the command. To correct for this condition, select **Withdraw** and check that the vertical deflection voltage reads a voltage more negative than the set point voltage.

Contact Head Engages Immediately

- If the microscope engages immediately after the **Engage** icon is selected, the problem may be one the following: 1) The **Set point** may be lower than the feedback voltage. Select **Withdraw** a few times and verify that the upper DVM reads a negative voltage of -1.0 to -4.0 Volts. Adjust the **Setpoint** to zero or slightly above and try to engage again. If the microscope still engages immediately, check the cabling between the computer and the NanoScope controller and also between the controller and the microscope. Any discontinuity in the voltage feedback will cause an immediate engage.

Contact AFM: Lines in the Image

- AFM tip picking up contamination. The tip will effectively become longer and this will cause the feedback loop to raise the tip to keep the same tracking force. The contamination can come off of the tip, which will cause another level shift in the image. This problem will show up as large bands in the captured image.
- Friction. Some samples have a stronger frictional interaction with the tip than others. The cantilever will bend and straighten due

to the tip sticking and slipping as it is dragged across the surface of the sample. The result is a line-by-line level shift in the captured image. The trace and retrace scan directions can actually be inverted from each other if the friction is high enough. A good practice is to use the scope image mode in dual trace display. The trace and retrace directions should be close to each other. Trace and retrace can invert if there is friction present between the tip and the sample surface.

Z Center Position goes out of Range

- Having the **Z limit** too low.
- Tilted sample. The sample should be as level as possible, particularly for larger scans, because tilt in the sample can cause the Z scan to run out of range.
- Mechanical drift will cause the sample-to-tip distance to change slowly bringing them apart completely, or too close together. If this is the case, the Z center will show either +220 (extended) or -220 (retracted), respectively.
- Drift in the optical path

Contact ADM: Poor Quality Images

- If the tip is engaged with the upper DVM reading a stable, near-set point value and the Z center position is not overly sensitive to small changes in **Set point**, then laser alignment is probably good and the tip is scanning the sample. If image quality is poor with distorted shapes and low contrast, try adjusting the gains first, then optimize the scan direction to take advantage of the best tip shape to improve image quality. Vary the **Scan angle** parameter in the **Scan Controls** panel and see if this will help clean up the image. There is some variation in the shape of tip from substrate- to-substrate and the tip shape can affect the engagement process. (For example, a blunt tip may tend to engage falsely.) Therefore, changing the angle at which the tip scans some surfaces may have a significant effect.

Tapping Mode

- **Streaks on the trailing edge of surface features:** Streaks are an indication of the tip not tracking the surface due to either: 1) insufficient tapping force; 2) an excessively fast scan rate; or, 3) gain values set too low. Streaking may also result from any

combination of these factors. Try the following procedures to eliminate this condition:

- Reduce the set point voltage. This increases the amount of tapping force on the surface. This is probably the thing that will be most effective. Be careful when doing this on soft samples. The sample surface can still be disturbed even though the forces are very small..
- Reduce the scan rate. The scan rate needs to be slower in Tapping Mode than in contact AFM. Typically it should be around 1-3Hz.
- Increase the integral and proportional gains. This will speed up the response time of the Z piezo transducer.

Tapping Mode: Lines across the image

- Lines oriented in the fast scan direction can be caused by the tip sticking to the surface. This condition may be remedied by increasing the RMS voltage. Working with a larger RMS has the effect of giving the tip more energy to pull off of the surface. To correct this condition, try the following approach:
 1. Use arrow keys (p) to increment the **Set point** voltage positively. Do this while monitoring the **Z Center Position** voltage on the display monitor. Increase the Set-point voltage until the **Z Center Position** voltage jumps to the fully retracted position.
 2. Note the current **Set point** voltage value. This value is just slightly greater than the RMS voltage currently used.
 3. Increase the Set point voltage another 2 volts.
 4. Use arrow keys to increase the **Drive amplitude** (press 2-3 times). This will increase the RMS voltage output from the microscope. (Increasing the RMS voltage means the cantilever is oscillated harder, making it less subject to capture by a sticky surface.)
 5. Use arrow keys to reduce the Set point voltage until the **Z Center Position** voltage begins to move away from the retracted position. Continue to reduce the Set-point voltage until the topographic image on the display monitor "pops" into clear view.

Tapping Mode: Rings around features on the surface

- This effect might also be described as the image looking as though it is half sub-merged beneath water. This is caused by operating with a drive frequency too close to cantilever resonance. Use the arrow keys to increment the drive frequency a little lower. Do this while watching the Real Time scan. Be aware that the RMS voltage might also reduce. Repeat the steps in the "lines across the image" troubleshooting description to adjust the RMS voltage.