



# **HOME CAM1**

# **HOME CAM1WIF**

**720P HOME IP CAMERAS**

## **User's Manual**

ENHANCE YOUR NVR WITH OUR WIDE RANGE OF QVIS IP CAMERAS  
OUR PRODUCTS ARE FULLY TESTED TO WORK TOGETHER



*DONT SETTLE FOR LESS, ALL OUR PRODUCTS CARRY QVIS LOGOS*

# Welcome

Thank you for purchasing the **720P Home IP Camera**.

This user's manual is designed to be a reference tool for the installation and operation of your system.

Here you can find information about the corresponding IP camera's features and functions, as well as a detailed installation method.

**Before installation and operation please read the following safeguards and warnings carefully!**

# Important Safeguards and Warnings

## 1 . Electrical safety

- All installation and operation here should conform to your local electrical safety codes.
- The power supply shall conform to the requirement in the SELV (Safety Extra Low Voltage) and must make sure that the limited power source is rated 12V DC or 24V AC.

**Please note: Do not connect two power supplying sources to the device at the same time; it may result in device damage!**

- We assume no liability or responsibility for all the fires or electrical shock caused by improper handling or installation.
- We are not liable for any problems caused by unauthorized modification or attempted repair.

## 2 . Transportation Security

- Please ensure that the product does not endure heavy stresses, violent vibration or contact with water during transportation, storage and installation.
- Please use the original packing material (or the material of the same quality) if you need to return it to vendor.

## 3 . Installation

- Do not apply power to the product before completing installation.
- Do not put object(s) on the product.
- Please install a proper power cut-off device during the installation connection.

## 4 . Qualified engineers needed

All the examination and repair work should be done by the qualified service engineers. We are not liable for any problems caused by unauthorised modifications or attempted repair.

## 5. Environment

- This product should be installed in a cool, dry place away from direct sunlight, inflammable, explosive substances and etc.
- Please keep it away from environments that contain electromagnetic radiation or objects that produce it.
- Please keep sound ventilation around the device at all times.
- Do not allow the water and other liquid to penetrate into the device if casing has been compromised. This series product complies with the IP66 standard specified in the Degrees of Protection Provided by Enclosure.
- Ensure lightning surge protection is in place to make sure you fully protect camera circuitry from electrical overload.



- Please make sure the CCD (CMOS) component is away from the radiation of the laser beam device. Otherwise it may result in CCD (CMOS) optical component damage.
- It is recommended that the grounding studs of the product should be grounded, so to further enhance the reliability of the camera.

## 6. Daily Maintenance

- Please shut down the device and then unplug the power cable before you begin any maintenance work.
- Do not touch the CCD (CMOS) optic component. Please use an air jet to clean the dust off the lens surface. You can use the dry cloth with some alcohol or mild detergent to clear if necessary.
- When the camera is not in use please put the dustproof cap to protect the CCD (CMOS) component.
- Do not use volatile solvent such as the benzene, paint thinner or detergent with the ability to abrade surfaces. It may result in lens damage or adversely affect the device's performance.

## 7. Accessories

Always use all the accessories recommended by manufacturer.

Before installation, please open the package and check that all the components are included. Contact your local retailer/vendor ASAP if something is missing.

## 8. Box Contents:

Accessory Name	Amount
Network Camera Unit	1
User's Manual	1
Installation Accessories Bag	1
CD	1

# Table of Contents

1	General Introduction .....	1
1.1	Overview .....	1
1.2	Features .....	1
1.3	Specifications .....	2
1.3.1	Performance .....	2
1.3.2	Factory Default Setup .....	4
2	Framework.....	11
2.1	Device Components.....	11
2.2	Dimensions .....	13
2.3	Bidirectional talk.....	14
2.3.1	Device-end to PC-end.....	14
2.3.2	PC-end to the Device-end.....	14
2.4	Alarm Setup .....	15
2.4.1	Alarm Input and Output Connection.....	15
3	Device Installation .....	17
4	Quick Configuration Tool .....	19
4.1	Overview .....	19
4.2	Operation .....	19
5	Web Operation .....	22
5.1	Network Connection.....	22
5.2	Login and Logout .....	22
6	FAQ.....	25

# 1 General Introduction

## 1.1 Overview

This network camera integrates traditional camera and network video technology. It adopts both audio and video data collection and transmission simultaneously. Because of inbuilt internal hardware it can connect to a network directly without any auxiliary device. When you want to access the camera, you can use a web browser running off the network at the client-end. Due to its multiple functions it allows for various use in many environments such office, bank, road & traffic monitoring, etc.

This series network camera product uses the latest industry standard H.264 video and G.711a audio compression technology, which guarantee the best audio and video quality whilst reducing file sizes.

One of the other main features this camera includes is the IR night vision, which aids in video surveillance when the camera is functioning within a low illumination environment. The LED IRs highlight objects of interest within the camera's field of view and is then able to filter out any visual interference so that you can easily view footage upon a monitor. It supports real-time monitor and listening at the same time via the inbuilt microphone. If you want to communicate with a person(s) in view of the camera it also supports dual-way bidirectional talk.

The built-in protection enclosure and waterproof design conforms to the IP 66 level. It has the sound waterproof function suitable for use in the outdoor environments.

## 1.2 Features

<b>User Management</b>	<ul style="list-style-type: none"><li>• Different user rights for each group, one user belongs to one group.</li><li>• The user's right shall not exceed the group right.</li></ul>
<b>Data Transmission</b>	<ul style="list-style-type: none"><li>• Wired network data transmission via the Ethernet port.</li><li>• Wireless Home camera supports WIFI/3G wireless network data transmission.</li></ul>
<b>Storage Function</b>	Supports: <ul style="list-style-type: none"><li>• Central server backup function in accordance with your configuration and setup in alarm or schedule setting</li><li>• Recording via the Web and sending the recorded file to the storage at the client-end's PC.</li><li>• Micro SD card storage for alarm recording or snapshot storage.</li><li>• Network storage function such as FTP.</li></ul>
<b>Network Monitor</b>	<ul style="list-style-type: none"><li>• Network camera supports one-channel audio/video data transmission to network terminal and then decodes signal. Delay is within 270ms (network bandwidth support needed)</li><li>• Supports a maximum of 20 connections.</li><li>• Adopts the following audio and video transmission protocols: HTTP, TCP, UDP, MULTICAST, RTP/RTCP, RTSP, etc.</li><li>• Supports web access.</li></ul>
<b>Alarm Function</b>	<ul style="list-style-type: none"><li>• Real-time response to external on-off alarm input. User can setup prerecord time length before alarm trigger incident ( also allows user to pre-record audio file)</li><li>• Real-time video detect: motion detect, camera masking, PIR human body movement detect.</li></ul>

<b>Network Management</b>	<ul style="list-style-type: none"> <li>Allows network camera configuration and management via Ethernet.</li> <li>Supports device management via web or client-end.</li> </ul>
<b>Power</b>	<ul style="list-style-type: none"> <li>External power adapter DC12V.</li> <li>Power over Ethernet (PoE). Conforms to the IEEE802.3af standard.</li> <li>Connect the device to the switch or the router that supports the PoE function to obtain operational power.</li> </ul> <p><b>Warning!</b> Do not connect these two power supplying sources to the device at the same time; it may result in device damage!</p> <p><b>Please note:</b> system cannot support these two types of power supplying at the same time. As a recommendation, if you wish for your security system to be able to continue to run when there is a loss of power or unstable electrical supply coming from the mains, a UPS system should be installed.</p>
<b>Assistant Function</b>	<ul style="list-style-type: none"> <li>Log function</li> <li>Supports system resource information and running status real-time display.</li> <li>Day/Night mode auto switch.</li> <li>Supports picture parameter setup such as electronic shutter and gain setup.</li> <li>Supports motion detection.</li> <li>Backlight compensation: screen auto split allows backlight compensation to adjust the brightness.</li> <li>Supports video watermark function to avoid vicious video modification.</li> <li>Built in IR light to aid with night vision function.</li> <li>The enclosure conforms to the IP66 protection testing. It can withstand a variety of weather conditions and outdoor environments.</li> <li>Support dual-stream, ACF.</li> <li>Built-in microphone and speaker.</li> <li>Supports PIR human body movement detection.</li> <li>Supports white light alarm function.</li> </ul>

## 1.3 Specifications

### 1.3.1 Performance

Please refer to the following sheet for product performance specification:

Model Parameter		HEMOCAM1	HEMOCAM1WIF
System	Main Processor	TI Davinci high performance DSP	
	OS	Embedded LINUX	
	System Resources	Support real-time network monitor, local record, and remote operation at the same time.	
	User Interface	Remote operation interface such as WEB, DSS, PSS.	
	System Status	Bit stream statistics, log, and software version.	
Video Parameter	Image Sensor	1/3-inch CMOS	
	Pixel	1280(H)*960(V)	
	Gain Control	Fixed/Auto	
	White Balance	Manual/Auto	
	BLC	On/Off	
	Exposure Mode	Manual/Auto	



		PAL: It ranges from 1/3 to 1/10000. NTSC: It ranges from 1/4 to 1/10000.
	<b>Video Compression Standard</b>	H.264/ H.264B/MJPEG
	<b>Video Frame Rate</b>	PAL: Main stream(1280*960@15fps) extra stream(352*288@15fps), Main stream(1280*720@25fps ) extra stream(352*288@25fps ) NTSC: Main stream(1280*960@15fps) extra stream(352*240@15fps)), Main stream(1280*720@30fps) extra stream(352*240@30fps)
	<b>Video Bit Rate</b>	H.264: 56Kbps-6144Kbps MPEG is adjustable and bit rate is adjustable. Support customized setup.
	<b>Video Flip</b>	Support mirror. Support flip function.
	<b>Snapshot</b>	Max 1f/s snapshot. File extension name is JPEG.
	<b>Privacy Mask</b>	Supports max 4 privacy mask zones
	<b>Video Setup</b>	Support parameter setup such as bright, contrast.
	<b>Video Information</b>	Channel title, time title, motion detect, camera masking.
	<b>Lens</b>	3.6mm. Fixed focus. Angle of view: 70°(H) *51.5°(V)
	<b>Lens Interface</b>	M12. Lens is the default accessories
<b>Audio</b>	<b>Audio Bit Stream</b>	Dual-way
	<b>Audio Input/Output</b>	Built-in microphone and speaker
	<b>Audio Bit Rate</b>	8kbps 16bit
	<b>Audio Compression Standard</b>	G.711A/G.711Mu/PCM
<b>Video</b>	<b>Motion Detect</b>	396 (18*22) detection zones; sensitivity level ranges from 1 to 6 (The 6 <sup>th</sup> level has the highest sensitivity) Activation event: video storage, image snapshot, log, email SMTP function and etc.
	<b>Camera Masking</b>	Sensitivity level ranges from 1 to 6. Each sensitivity level is the percentage of the privacy mask zone. Activation event: alarm device, audio/video storage, image snapshot, log, email SMTP function and etc.
<b>Alarm Port</b>		1-channel input and 1-channel output (on-off )
<b>Record and Backup</b>	<b>Record Priority</b>	Manual>Video detect>Schedule
	<b>SD Card Storage</b>	Support Micro SD card hot-swap
	<b>Storage Management</b>	Support display network storage status
<b>Wire Network</b>	<b>Wire Network</b>	1-channel wire Ethernet port, 10/100 Base-T Ethernet

	<b>Wireless Network</b>	N/A	IEEE802.11a/b/g/n , built-in antenna
	<b>Network Protocol</b>	Standard HTTP, TCP/IP, ARP, IGMP, ICMP, RTSP, RTP, UDP, RTCP, SMTP, FTP, DHCP, DNS, DDNS, PPPOE, UPNP, NTP, Bonjour, SNMP.	
	<b>Remote Operation IR light</b>	Monitor, system setup, file download, log information, maintenance , upgrade and etc.	
AUX Port  General Parameter	<b>Compensation Light</b>	White light (Max 1W) Auto turn on white light when an alarm is activated. The light can last until the alarm ends. Support compensation light brightness setup via the Web.	
	<b>PIR Human Body Movement Detect</b>	Max distance 7m under normal room temperature. Support compensation light activation, record at light.	
	<b>WPS</b>	N/A	Click one button to enable WIFI connection
	<b>Power</b>	DC 12V and PoE	DC 12V
	<b>Power Consumption</b>	4W MAX	6W MAX
	<b>Working Temperature</b>	-10℃~+55℃	-10℃~+50℃
	<b>Working Humidify</b>	10%~90%	
	<b>Dimensions(mm)</b>	66.6*99.5*131.2	
	<b>Weight</b>	229g (Excluding box)	
	<b>Installation</b>	Installation with the bracket.	

### 1.3.2 Factory Default Setup

Please refer to the following sheet for factory default setup information:

Setup		Item		Default Setup	
				HomeCAM1	HomeCAM1WIFI
Camera	Conditions	Brightness		50	
		Contrast		50	
		Saturation		50	
		Sharpness		50	
		Anti-flicker		Outdoor	
		Exposure Mode		Auto	
		Gain Range		0-50	
		Scene Mode		Auto	
		Day/night Mode		Auto	
		BLC		Off	
		Mirror		Off	
		Flip		Off	
	0	Main Stream	Bit stream type	General	
	Vide		Encode mode	H.264	

Setup		Item		Default Setup		
				HomeCAM1	HomeCAM1WIFI	
			Resolution	720P（1280*720）		
			Frame Rate（FPS）	PAL: 25 NTSC:30		
			Bit Rate Type	CBR		
			Recommended Bit	1536-6144 Kb/S		
			Bit Rate	4096		
			Frame Interval	50		
			Watermark	Enable		
			Watermark character	DigitalCCTV		
			Sub Stream	Enable	Enable	
				Bit stream type	General	
				Encode mode	H.264B	
				Resolution	CIF(352*288/352*240)	
				Frame Rate（FPS）	PAL: 25 NTSC:30	
				Bit Rate Type	CBR	
				Recommended Bit	192-1024Kb/S	
				Bit Rate	1024	
			Frame Interval	50		
		Snapshot	Snapshot Type	General		
			Image Size	720P（1280*720）		
			Quality	5		
			Interval	1s		
		Video Overlay	Privacy Mask	Disable		
			Channel Title	Enable		
			Time Title	Enable		
		Path	Snapshot Path	C:\PictureDownload		
			Record Path	C:\RecordDownload		
	Audio	Main Stream	Enable	Enable		
			Encode Mode	G.711A		
		Extra Stream	Enable	Disable		
	Network	TCP/IP	Host Name	IPC		
			Ethernet Card	Wire(default)		
			Mode	Static		
			Mac Address	Device MAC address when it is shipped out of the factory		

Setup	Item		Default Setup	
			HomeCAM1	HomeCAM1WIFI
		IP Version	IPv4	
		IP Address	192.168.1.108	
		Subnet Mask	255.255.255.0	
		Default Gateway	192.168.1.1	
		Preferred DNS	8.8.8.8	
		Alternate DNS	8.8.8.8	
		Enable ARP/Ping set device IP address service	Enable	
	Connection	Max Connection	10	
		TCP Port	37777	
		UDP Port	37778	
		HTTP Port	80	
		RTSP Port	554	
		HTTPs Enable	Disable	
		HTTPs Port	443	
	PPPoE	Enable	Disable	
		Username	none	
		Password	N/A	
	DDNS	Server Type	Disable, CN99 DDNS	
		Server IP	none	
		Server Port	80	
		Domain Name	none	
		User	none	
		Password	****	
		Update Period	10 minutes	
	IP Filter	Trusted sites	Disable	
	SMTP(Email)	SMTP Server	none	
		Port	25	
		Anonymity	Disable	
		User Name	anonymity	
		Password	****	
		Sender	none	
		Authentication (Encryption)	N/A	



Setup	Item		Default Setup			
			HOMECAM1		HOMECAM1WIFI	
		mode)				
		Title (Subject)	IPC Message			
		Attachment	N/A			
		Mail Receiver	0 second			
		Email Test	Disable, interval=60 seconds			
	UPnP	Enable UPnP	Enable			
	SNMP	SNMP Port	161			
		Read Community	public			
		Write Community	private			
		Trap Address	N/A			
		Trap Port	162			
		SNMP Version	SNMP v1: Disable SNMP v2: Disable SNMP v3: Disable			
	Bonjour	Enable	Enable			
		Server Name	“SN”. It depends on the device.			
	Multicast	Multicast Address	239.255.42.42			
		Port	36666			
	WIFI	WIFI	N/A	Disable		
		WPS	N/A	PIN	Enable	
				PIN	Null	
				SSID	Null	
				Button	Disable	
	QoS	Real-time Monitor	0			
		Command	0			
		Enable Wireless QoS	Disable			
Event	Video detect	Motion Detect	Enable	Disable		
			Anti-dither	5 seconds		
			Sensitivity	3		
			Compensation Light	Disable		
			Compensation Light Delay	10 seconds		

Setup	Item			Default Setup	
				HEMECAM1	HEMECAM1WIFI
			Record Channel	Enable	
			Record Delay	10 seconds	
			Relay out	Enable	Enable
			Alarm Delay	10 seconds	10 seconds
			Send Email	Disable	
			Snapshot	Disable	
		Video Masking	Enable	Disable	
			Record Channel	Enable	
			Record Delay	10 seconds	
			Relay out	Enable	Enable
			Alarm Delay	10 seconds	10 seconds
			Send Email	Disable	
			Snapshot	Disable	
	Alarm	PIR Alarm	Enable	Disable	
			Anti-dither	0 second	
			Compensation Light	Enable	
			Compensation Light Delay	10 seconds	
			Record Channel	Enable	
			Record Delay	10 seconds	
			Relay out	Enable	Enable
			Alarm Delay	10 seconds	10 seconds
			Send Email	Disable	
			Snapshot	Disable	
		Alarm Activation	Enable	Disable	
			Relay in	Alarm 1	
			Anti-dither	0 second	
			Sensor Type	NO	
			Compensation Light	Disable	
			Compensation Light Delay	10 seconds	
			Record Channel	Enable	
			Record Delay	Enable	
			Relay out	10 seconds	
			Alarm Delay	10 seconds	

Setup	Item			Default Setup	
				HEMECAM1	HEMECAM1WIFI
			Send Email	Disable	
			Snapshot	Disable	
		Compensation Light	Enable	Disable	
			Period	All Week Period: 00:00:00-23:59:59.	
	Abnormality	No SD Card	Enable	Disable	
			Relay out	Enable	
			Relay out Delay	10 seconds	
			Send email	Disable	
		Capacity Warning	Enable	Disable	
			Capacity Limit	10%	
			Relay out	Enable	
			Relay out Delay	10 seconds	
		SD Card Error	Enable	Disable	
			Relay out	Enable	
			Relay out Delay	10 seconds	
			Send email	Disable	
		Disconnect ion	Enable	Disable	
			Record	Enable	
			Record Delay	10 seconds	
			Relay out	Enable	
			Relay out Delay	10 seconds	
		IP Conflict	Enable	Disable	
			Record	Enable	
			Record Delay	Enable	
			Relay out	10 seconds	
			Relay out Delay	10 seconds	
Storage	Storage	Storage Position	Local Storage	Enable	
			FTP	Disable	
		FTP	Enable FTP	Disable	
			Server IP	N/A	
			Port	21	
			Username	anonymous	
			Password	N/A	
			Remote path	Share	
			Emergency Storage (Local)	Disable	
		Record Control	Pack Duration	8 minutes	

Setup	Item		Default Setup	
			HEMECAM1	HEMECAM1WIFI
			Pre-record	5 seconds
			Disk Full	Overwrite
			Record Mode	Auto
			Record Stream Bit	Main Stream
System	General	Local Host	Device No	Device factory SN
			Language	English
			Video Standard	NTSC
		Date and time	Date Format	Y-M-D
			Time Format	24H
			Time Zone	GMT+08:00
			System Time	Sync
			DST	Disable
			DST Type	Week
			Start Time	00:00:00 of the first Sunday of the month
			End Time	00:00:00 of the second Monday of the month
			NTP	Disable
			NTP Server	clock.isc.org
			Port	37
			Update Period	10 minutes
	Auto Maintenance	Auto Reboot	Enable. 02:00 Tuesday	
		Auto Delete Old Files	Disable	



## 2 Framework

### 2.1 Device Components

You can refer to the following figure for component information (see Figure 2-1).

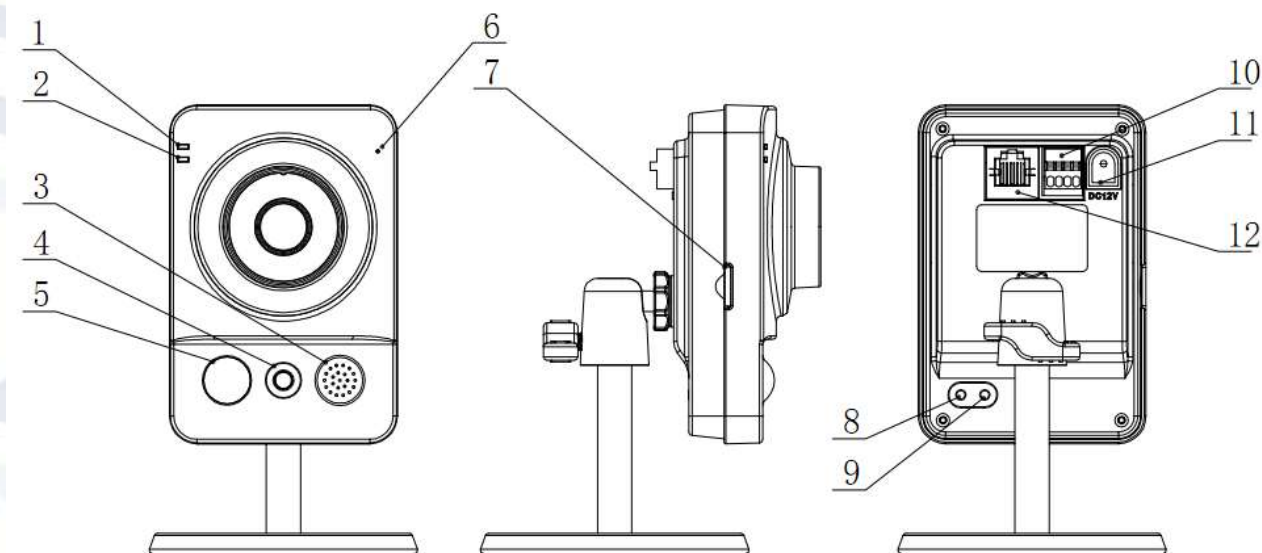


Figure 2-1

Please refer to the following sheet for detailed information.

SN	Port Name	Indicator	Connector	Note
1	Power light indicator	POWER	/	<ul style="list-style-type: none"><li>When system boots up—Green light turns on.</li><li>When system is upgrading – Green light flashes. Interval is 0.5s.</li><li>When system is alarming—Green light flashes. Interval is 0.2s.</li></ul>
2	Network indicator light	NET	/	<ul style="list-style-type: none"><li>Wire network connection - Red light is on.</li><li>Wireless network connection - Green light is on.</li></ul>
3	Speaker	/	/	Output audio signal.
4	White light	/	/	Activates motion detection, PIR human body movement detection and external alarm.

SN	Port Name	Indicator	Connector	Note
5	PIR sensor	PIR	/	Passive IR motion detection port. It can detect the IR object movement (such as human body or other heating object).
6	Microphone	/	/	Directly receive audio signal. (This function is optional. For some series product only.).
7	Micro SD card	Micro SD	Micro SD card slot	SD card storage. (This function is optional. For some series product only.).
8	Reset button	Reset	/	Restore factory default setup.  When system is running normally, press the RESET button for at least 5 seconds. The system will restore factory default setup.
9	WPS button (HOMECAM1WIFI model only)	WPS	Fast wireless connection	Press the WPS button of the router and the device for at least 2 seconds. Usually the device can connect to the router within 1 minute.
10	Alarm pin	/	I/O port	Alarm signal input/output
11	Power port	DC12V	/	Input DC 12V power.
12	Network port	LAN	Ethernet port	<ul style="list-style-type: none"> <li>Connect to standard Ethernet cable.</li> <li>Supports PoE function.</li> </ul>

## 2.2 Dimensions

Please refer to the following figure for dimension information. The unit is mm (see Figure 2-2).

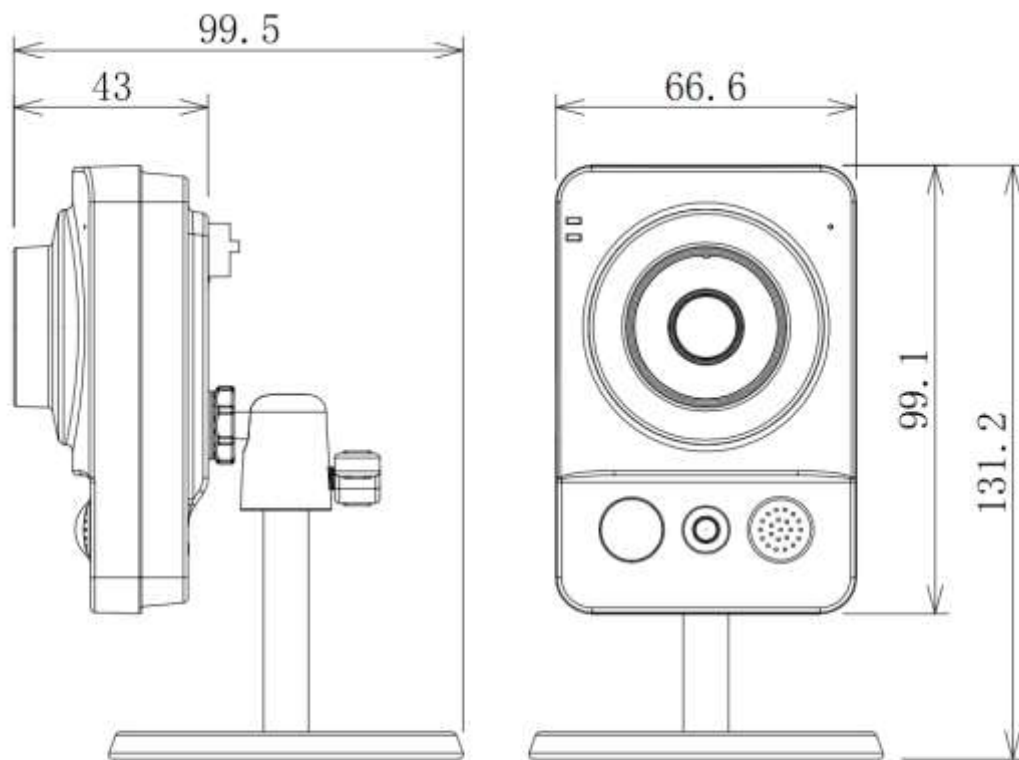


Figure 2-2

## 2.3 Bidirectional talk

### 2.3.1 Device-end to PC-end

#### Device Connection

1. Please connect the speaker or the MIC to the audio input port found in the device rear panel. Then connect the earphone to the audio output port in the PC.
2. Login to the Internet and then click the Audio button to enable the bidirectional talk function.
3. You will see that the button becomes orange after you enabled the audio talk function.
4. Click Audio button again to stop the bidirectional talk function.

#### Listening Operation

You will be able to listen to any audio coming from the device end by plugging in speakers or a headphone in to the audio output port at the PC end.

### 2.3.2 PC-end to the Device-end

#### Device Connection

1. Connect the speaker or the MIC to the audio input port in the PC and then connect the earphone to the audio output port of the device.
2. Login to the Web and then click the Audio button to enable the bidirectional talk function.
3. You will see that the button becomes orange after you enabled the audio talk function.
4. Click Audio button again to stop the bidirectional talk function.

#### Listening Operation

Speak or play music at the PC-end, you can use the built-in speaker of the device-end to listen.

**Note:** Please go to the Master Volume interface of the PC to set it first if you want to use the dual-way bidirectional talk. Please select Front MIC mode in the record control interface. (You can select microphone enhanced in 'Advanced' interface if the audio is too low.)



## 2.4 Alarm Setup

The alarm setup interface is shown as below (see Figure 2-3).



Figure 2-3

### 2.4.1 Alarm Input and Output Connection

Please refer to the following figure for alarm input information. See Figure 2-4.

**Alarm input:** When the input signal is idle or grounded, the device can collect the different statuses of the alarm input port. When the input signal is connected to the 3.3V or is idle, the device collects the logic '1'.

When the input signal is grounded, the device collects the logic '0'.

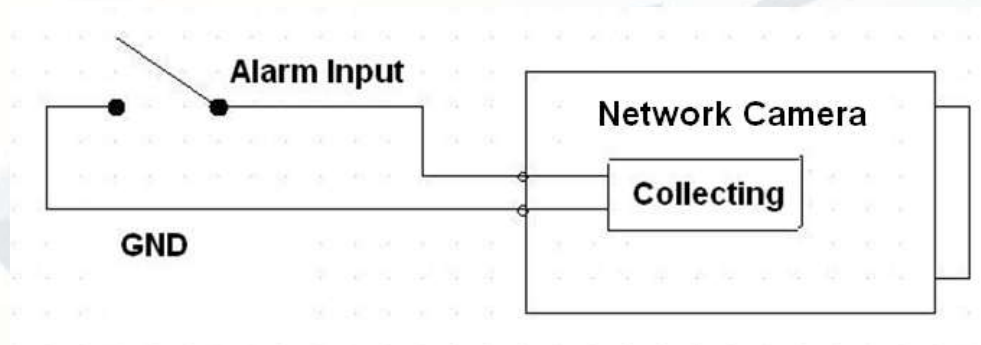


Figure 2-4

Please refer to the following figure for alarm output information (see Figure 2-5).

Port **NO** and Port **C** comprises of an on-off button to provide the alarm output.

This button is normally open. The button turns off when there is an alarm output.

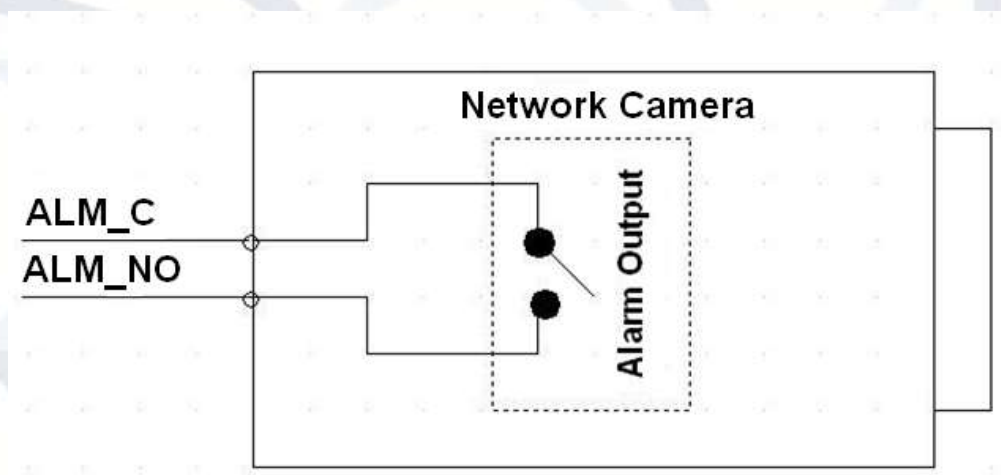


Figure 2-5

### 3 Device Installation

This series camera support two installation modes: wall mount and pendant mount. See Figure 3-1 and Figure 3-2.

**Important:** Please make sure the installation surface can support a minimum of 3X weight of the camera and the bracket.

#### Step 1:

Paste the installation positioning map on the installation surface such as wall, ceiling or a wooden board.

#### Step 2:

Dig holes in the installation surface according to the installation positioning map.

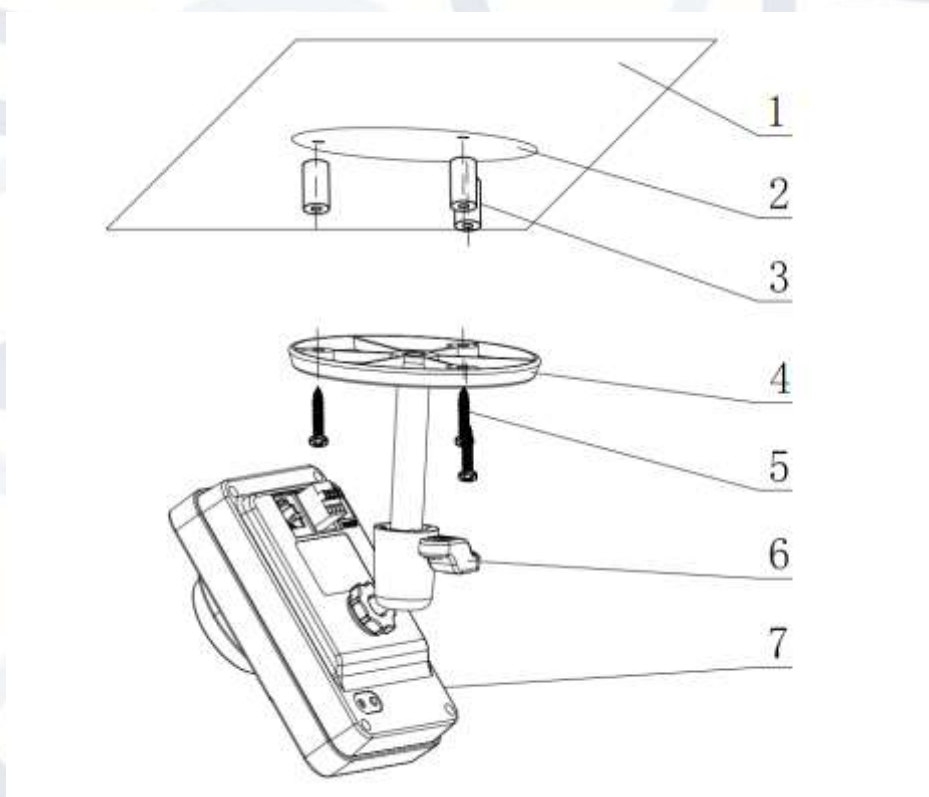


Figure 3-1

#### Step 3:

Insert the expansion bolts, from the accessories bag, to the holes you have just dug out. If it is the wood surface you can skip to the next step.

#### Step 4:

Use the screws from the accessories bag to secure the device firmly.

#### Step 5

Connect the cable and then boot up the device.

**Step 6:**

Loosen the adjustable knob a small amount, and then adjust the camera to the desired/proper surveillance position according to your actual requirements.

**Step 7:**

Secure the knob of the bracket to fix the camera.

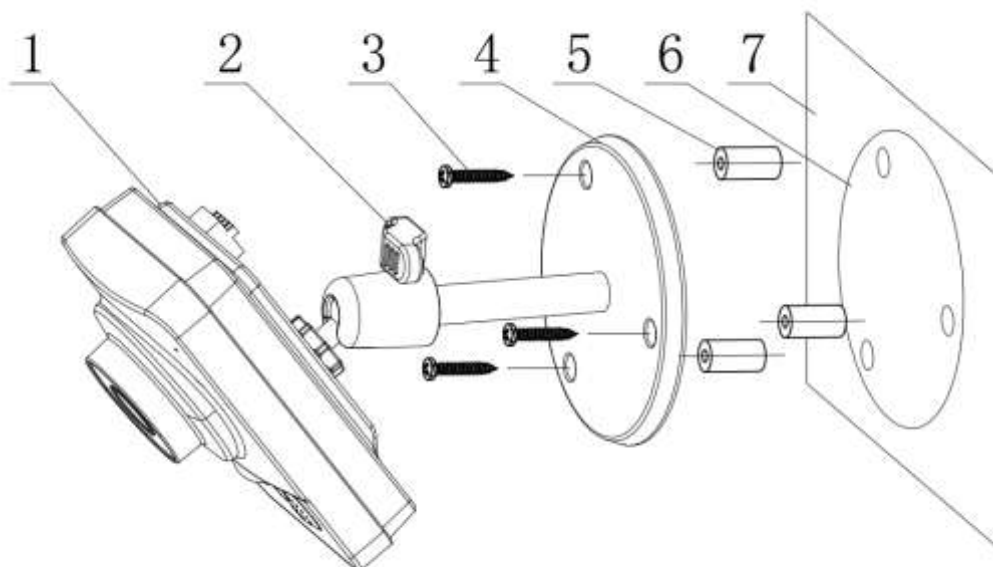


Figure 3-2

NUMBER KEY	ITEM NAME
1	Main IP camera body
2	Adjustment screw
3	Screws
4	Mounting plate
5	Screw Bolts
6	Positioning Map
7	Installation Surface



## 4 Quick Configuration Tool

### 4.1 Overview

Quick configuration tool can search current IP address and modify IP address. At the same time, you can use it to upgrade the device.

**Please note:** the tool only applies to the IP addresses in the same segment.

### 4.2 Operation

Double click the 'ConfigTools.exe' icon and you will see an interface just like the one shown as in Figure 4-1.

In the device list interface, you can view the device's IP address, port number, subnet mask, default gateway, MAC address, etc.

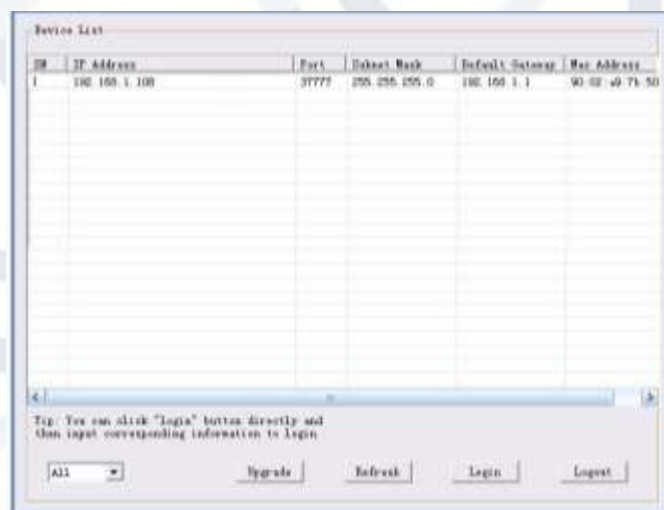


Figure 4-1 Search interface

Select one IP address and then right click mouse, you will see an interface like the one shown in Figure 4-2.

**Note:** You can set the IP address, subnet mask and gateway for the network camera & PC. The network camera IP address and PC IP address should be in the same network segment if there is no router. Network camera default IP address is 192.168.1.108. If there is a router, please set the corresponding gateway and subnet mask.

The factory default user name is **admin** and password is **admin**. For security reasons, please modify your password after you first login.

**For detailed WEB operation, please refer to the Network Camera Web Operation Manual in the resource CD.**

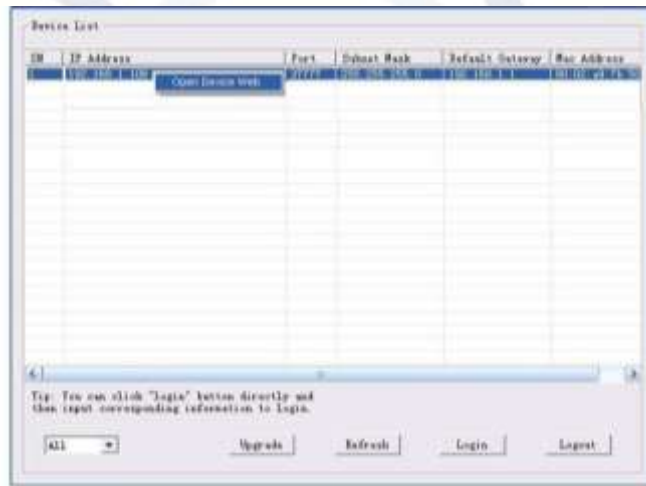


Figure 4-2 Search interface 2

Select the 'Open Device Web' item; you can go to the corresponding web login interface (see Figure 4-3).

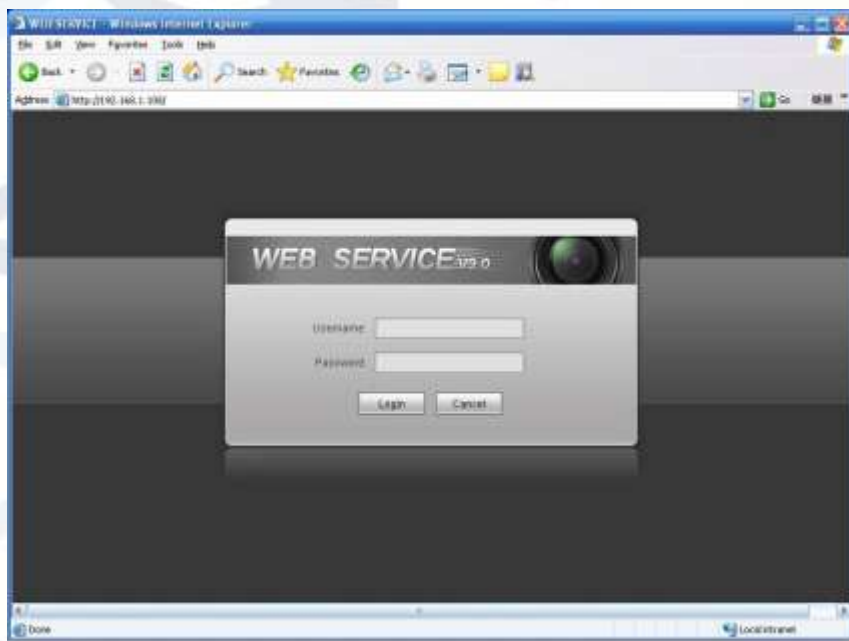


Figure 4-3 Web login

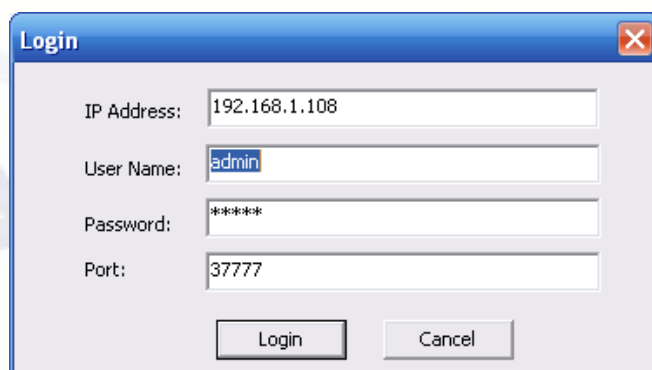
If you want to modify the device IP address without logging in to the device web interface, you can go to the configuration tool's main interface to set.

In the configuration tool's search interface (Figure 4-1), please select a device IP address and then double click it to open the login interface. Or you can select an IP address and then click the Login button to go to the login interface. See Figure 4-4.

In Figure 4-4, you can view device IP address, user name, password and port. Please modify the corresponding information to login.

Please note the port information here shall be identical with the port value you set in TCP port in Web Network interface. Otherwise, you cannot login the device.

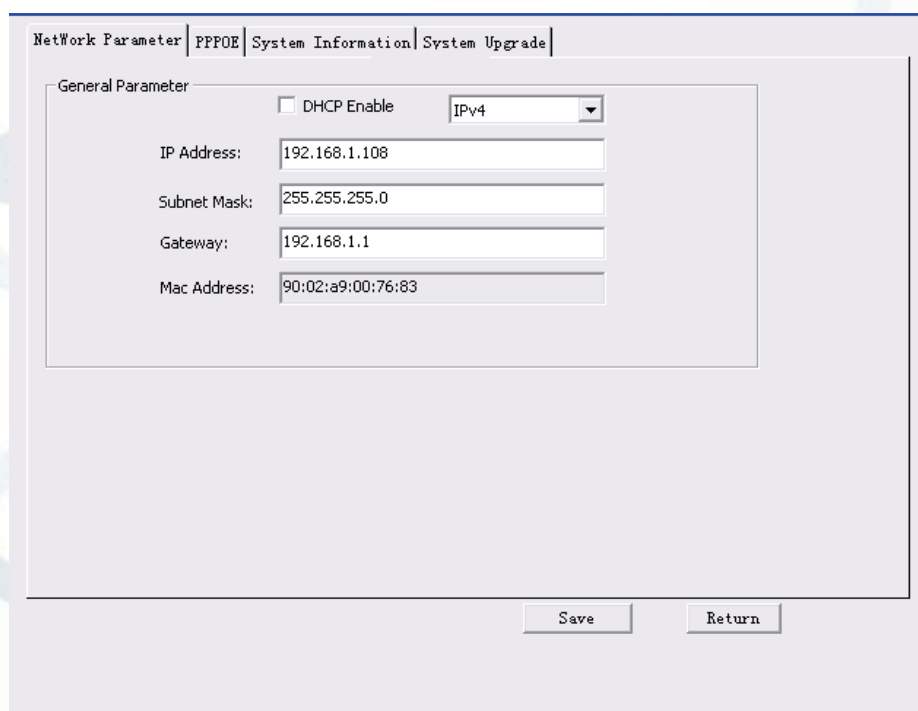
If you are using device background upgrade port 3800 to login, other setups are all invalid.

A login dialog box titled "Login" with a close button (X) in the top right corner. It contains four input fields: "IP Address" with the value "192.168.1.108", "User Name" with the value "admin", "Password" with the value "\*\*\*\*\*", and "Port" with the value "37777". At the bottom, there are two buttons: "Login" and "Cancel".

IP Address:	192.168.1.108
User Name:	admin
Password:	*****
Port:	37777
<input type="button" value="Login"/> <input type="button" value="Cancel"/>	

Figure 4-4 Login prompt

After you logged in, the configuration tool main interface is shown as below. See Figure 4-5.

The main configuration interface of the tool. It has a tabbed menu at the top with "Network Parameter", "PPPOE", "System Information", and "System Upgrade". The "Network Parameter" tab is selected. Inside this tab, there is a "General Parameter" section. It includes a checkbox for "DHCP Enable" (unchecked) and a dropdown menu for "IPV4" (selected). Below these are four input fields: "IP Address" (192.168.1.108), "Subnet Mask" (255.255.255.0), "Gateway" (192.168.1.1), and "Mac Address" (90:02:a9:00:76:83). At the bottom right of the main window, there are two buttons: "Save" and "Return".

Network Parameter   <b>PPPOE</b>   System Information   System Upgrade	
General Parameter	
<input type="checkbox"/> DHCP Enable	IPV4
IP Address:	192.168.1.108
Subnet Mask:	255.255.255.0
Gateway:	192.168.1.1
Mac Address:	90:02:a9:00:76:83
<input type="button" value="Save"/> <input type="button" value="Return"/>	

Figure 4-5 Main interface

For detailed information and operation instructions of the quick configuration tool, please refer to the *Quick Configuration Tool User's Manual* included in the resources CD.

## 5 Web Operation

This IP camera product supports the Web access and management using a PC.

Web includes several modules: monitor channel preview, system configuration, alarm, etc.

### 5.1 Network Connection

Please follow the steps listed below for network connection:

- Make sure the network camera has connected to the network properly.
- Please set the IP address, subnet mask and gateway of the PC and the network camera respectively. Network camera default IP address is 192.168.1.108. Subnet mask is 255.255.255.0. Gateway is 192.168.1.1
- Use order ping **\*\*\*.\*\*\*.\*\*\*.\*\*\***(\* network camera address) to check connection is OK or not.

### 5.2 Login and Logout

1. Open web browser and input network camera address in the address bar.

For example, if your camera IP is 192.168.1.108, then please input **http:// 192.168.1.108** into the web browser's address bar. See Figure 5-1.

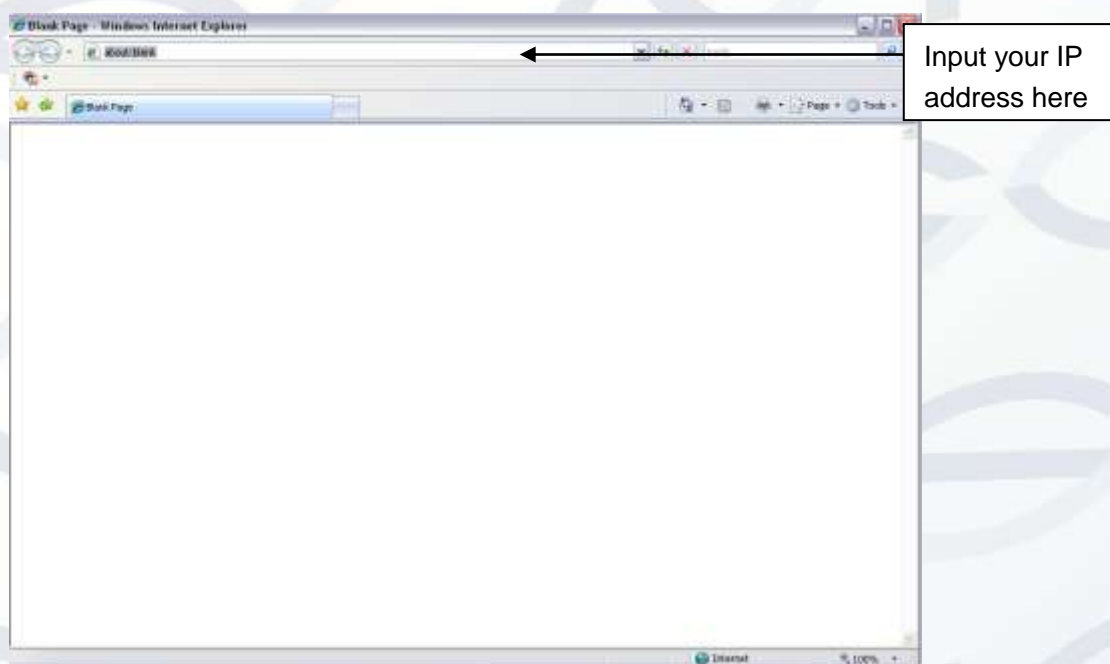


Figure 5-1 IP address

2. The login interface is shown as below. See Figure 5-2.
3. Please input your user name and password.
4. Default factory name is admin and password is admin.

**Note:** For security reasons, please modify your password after you first login.



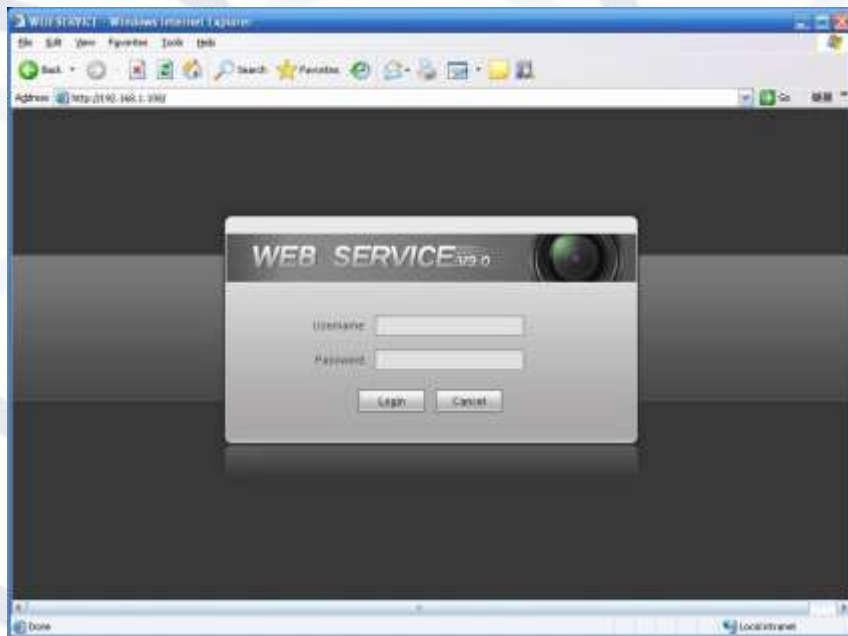


Figure 5-2 Web login

If it is your first time logging in, the system pops up warning information to ask you whether to install the control '**webrec.cab**' or not, after you have logged in for one minute. Please click OK button, the system can automatically install the control. When system is upgrading, it can overwrite the previous Web as well.

If you can't download the ActiveX file, please check whether you have installed the plug-in to disable the control download. Or you can lower the web browser's security level. See Figure 5-3.

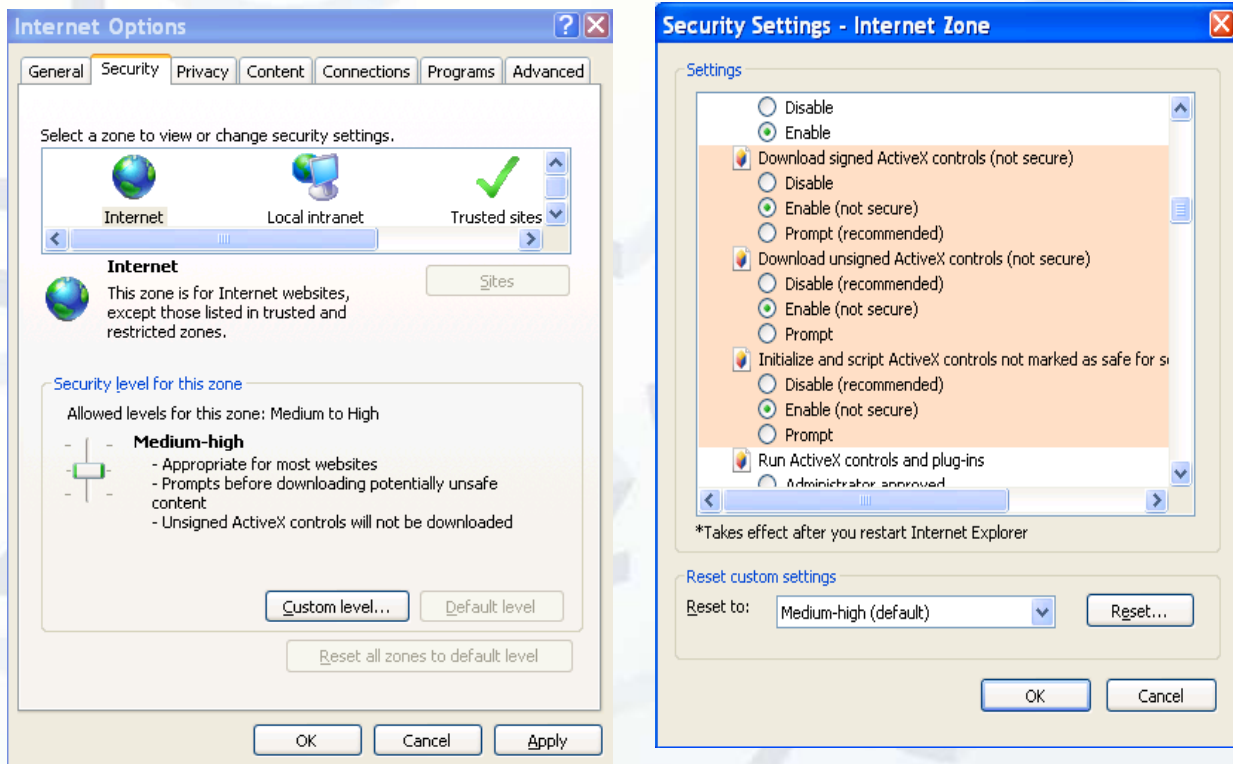


Figure 5-3 IE security level

After you logged in, you can see the main window. See Figure 5-4:

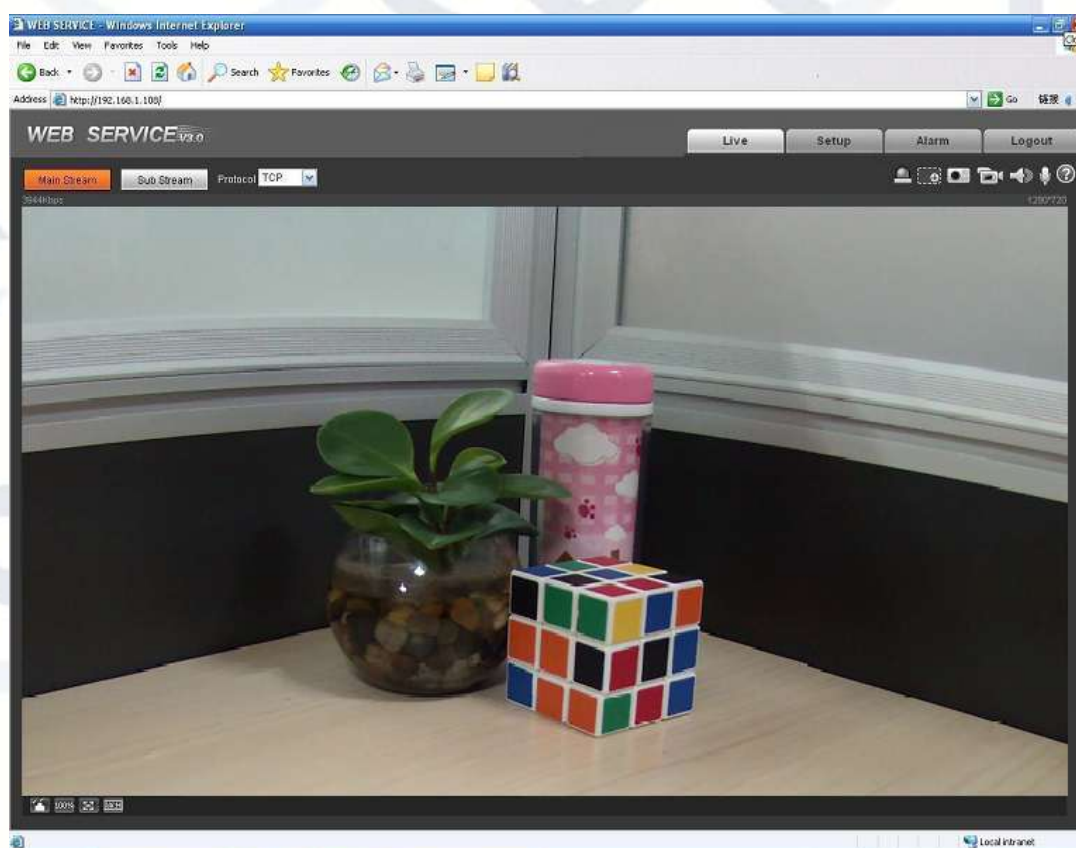


Figure 5-4 Web monitoring window

## 6 FAQ

Bug	Solution / Reason
I cannot boot up the device or operate it properly.	Please click the RESET button for at least five seconds to restore factory default setup.
The water has leaked into the camera casing	<ul style="list-style-type: none"> <li>The unauthorised front or rear cap removal may result in water leaking into the camera housing.</li> <li>The glass front cap has sustained heavy a push or strike.</li> <li>The waterproof plug of the rear cap becomes loosen.</li> </ul>
SD card hot swap	Before removing SD card, please stop recording and do not take any snapshots firstly and then wait for at least 15 seconds to remove the SD card. This is to ensure data integrity on the SD card is maintained. Otherwise you could lose all the data!
SD card write times	Do not set the SD card as the main storage media to store data, on the schedule record file. It may damage the SD card and decrease its operational lifetime.
I cannot use PIR function.	<ul style="list-style-type: none"> <li>There are heating sources around the device environment. It may result in a false alarm.</li> <li>The PIR sensitivity becomes much lower when the moving object's distance is more than 6m away from the sensor.</li> </ul>
I cannot upgrade the device via network.	When network upgrade operation has failed, you can use port 3800 to continue upgrade.
I cannot login the client-end or the WEB.	<ul style="list-style-type: none"> <li>The Active X control is blocked.</li> <li>The display card version needs to be DX8.1 or higher.</li> <li>Network connection error occurred.</li> <li>Invalid network setup.</li> <li>Invalid user name or password.</li> </ul>
I cannot play the download file.	<ul style="list-style-type: none"> <li>There is no player.</li> <li>There is no DX8.1 or higher.</li> <li>For the MEDIA PLAYER, there shall be Div X503Bundle.exe plugin if you play the .AVI file.</li> <li>For Windows XP user, you need to install the plugin DivX503Bundle.exe and ffdsho-2004 1012.exe.</li> </ul>
To guarantee setup update	After you modified the important setup, please reboot the device via the software to make sure the setup has been updated to the storage medium.
Power adapter	<p>The general power adapter can only work reliably within the temperature range of between 0°C to 40 °C. If the power supply is being operated outside this temperature range then it may result in an unstable power supply being provided to the camera.</p> <p>Please replace with an industrial-grade power adapter if you are using it in a harsh environment.</p>

#### **Note**

- **This user's manual is for reference only. Slight differences may be found in user interface.**
- **All the designs and software here are subject to change without prior written notice.**



For more information about our IP Cameras and other available cameras, NVRs & accessories, please visit our website:

**[www.adata.co.uk](http://www.adata.co.uk)**

Alternatively scan this QR code with your smart phone to be directed instantly to our website:

