

CT-I30 Installation Guide

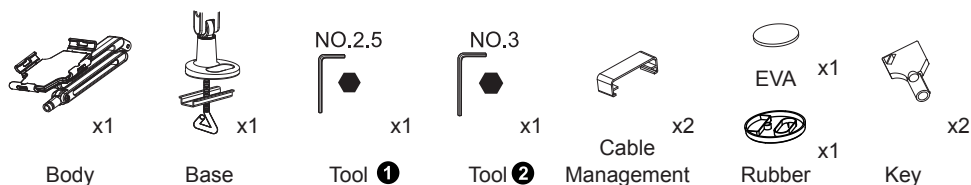
⚠ Important

* Please activate your warranty at www.MyLumens.com/reg

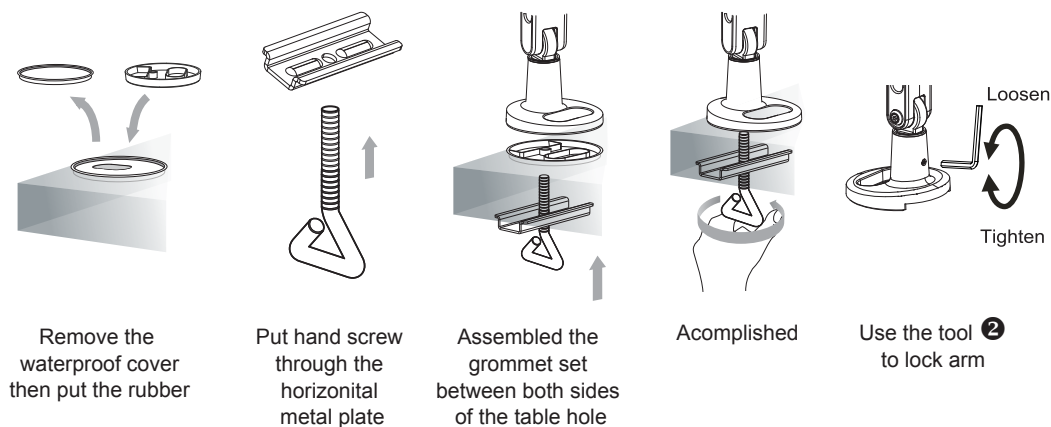
* To download the latest version of Quick Start Guide, multilingual user manual, software, or driver, etc., please visit LumensTM
<http://www.Mylumens.com/support.php>

* To ensure successful installation, please be sure to follow each of the following steps.

1. Accessories



2. Arms Installation



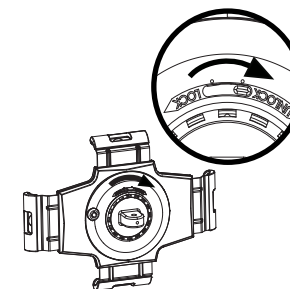
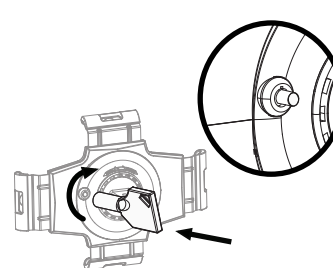
* When the base and arm joints are loose, use the long side of tool ② to lock arm.

3. Pad Installation

Caution: Claws can only be adjusted in “unlock” position do not try to adjust the claws in “lock” position.

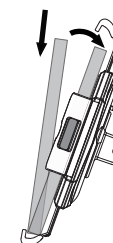
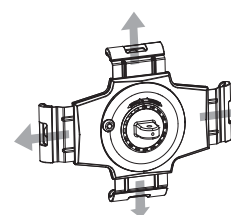
Ⓐ Use key to unlock the security lock

Ⓑ Unlock the claw lock

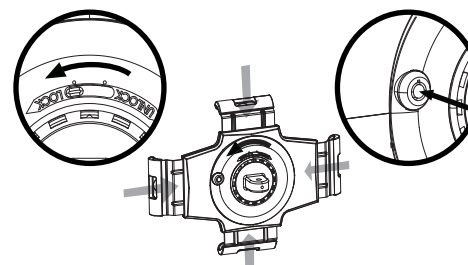


Ⓒ Pull out each fixed claw to extend position

Ⓓ Place pad product



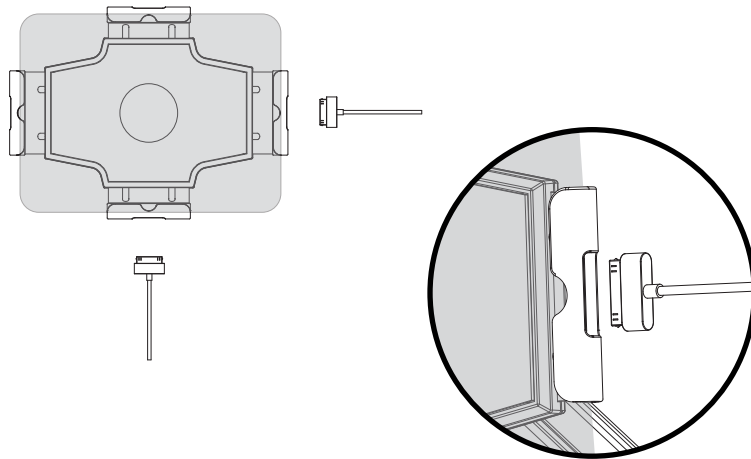
Ⓔ Push the claws toward PAD to be fixed and locked by switch, then press the knob in the security lock position



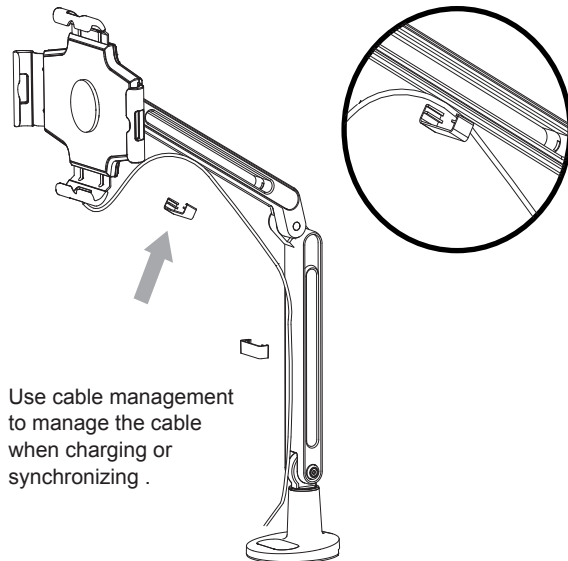
Additional EVA cushion available in the package for thinner devices

Paste EVA cushion to the indicated position on the holder

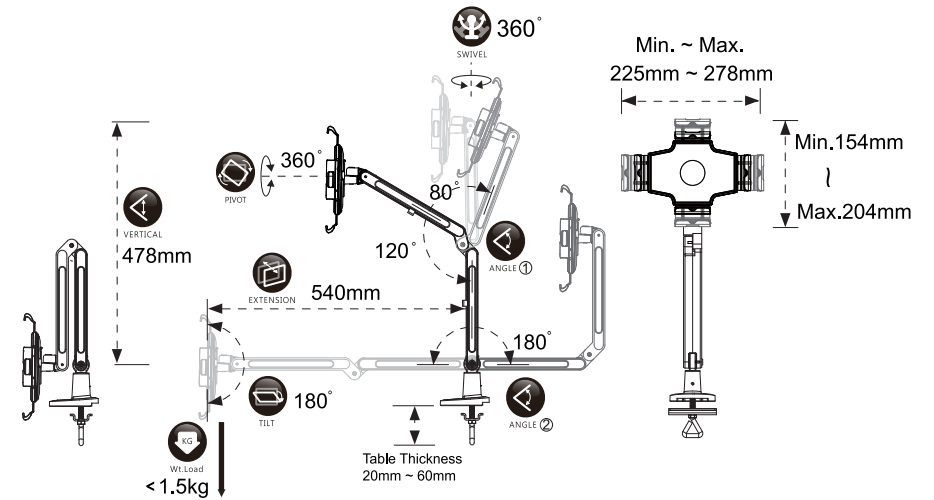
4. Charging



5. Cable Route



6. Features



7. Tension Adjustment

