

# Your washing machine

**Congratulations** - you have opted for a modern, high-quality domestic appliance manufactured by Bosch. This washing machine is distinguished by its economical water and energy consumption. Each machine that leaves our factory is inspected thoroughly to ensure that it functions properly and is in perfect condition.

For further information about products, accessories, spare parts and services visit our web site: [www.bosch-home.com](http://www.bosch-home.com) or contact our after-sales service centres.

## Contents

|                                       | Page  |
|---------------------------------------|-------|
| ■ Intended use                        | 1     |
| ■ Programmes                          | 1     |
| ■ Setting and adjusting the programme | 3     |
| ■ Washing                             | 3/4   |
| ■ After washing                       | 4     |
| ■ Individual settings                 | 5/6   |
| ■ Overview of programmes              | 7     |
| ■ Safety instructions                 | 8     |
| ■ Consumption values                  | 8     |
| ■ Important information               | 9     |
| ■ Insert for liquid detergent         | 10    |
| ■ Care                                | 10    |
| ■ Information on the display panel    | 10    |
| ■ Information about blockages         | 11    |
| ■ What to do if...                    | 12/13 |
| ■ Emergency release                   | 13    |
| ■ After-sales service                 | 13    |

## Environmental protection/Conservation tips

- Always fill the washing machine with a maximum amount of laundry for the relevant programme.
- Wash normally soiled laundry without a prewash.
- Instead of the **Cottons 90 °C** programme, select the **Cottons 60 °C** and the **EcoPerfect** option. Comparable cleaning result with significantly lower energy consumption.
- Measure the detergent according to the manufacturer's instructions and water hardness.
- If the laundry is then dried in the tumble dryer, select the appropriate spin speed according to the instructions of the dryer manufacturer.

**Automatic stain removal**  
Automatic treatment of 16 different types of stain possible. No pretreatment of stains required - the washing machine automatically adapts the washing process to the stain.

## Intended use

- For domestic use only
- For machine-washable fabrics and hand-washable wool in detergent solution
- To be operated with cold drinking water and commercially available detergents and care products which are suitable for use in washing machines

- ! Observe the safety instructions on page 8.
- ! Do not leave children unattended near the washing machine.
- ! The washing machine is not to be used by children or persons not familiar with the operating instructions.
- ! Keep pets away from the washing machine.

Read these instructions and the separate installation instructions before operating the washing machine.

## Preparation

**Before washing for the first time**  
Wash once without any laundry → page 9.

**Load indicator/recommended dosage**  
To activate, first open the door, set the programme and then load the items of laundry.

## Sorting the laundry

Follow the manufacturer's care information. According to the information on the care labels. According to type, colour, soiling and temperature. Do not exceed the maximum load → page 7. Observe the important information → page 9.

## Detergents and care products

Measure accordingly: Amount of laundry, soiling, water hardness (ask your water supply company) and manufacturer's instructions. Models without insert for liquid detergent: Pour liquid detergent into the appropriate dispenser and place in the drum. During operation: open the detergent drawer carefully.

**Dilute thick fabric softener and care products with water.**  
This prevents blockages.

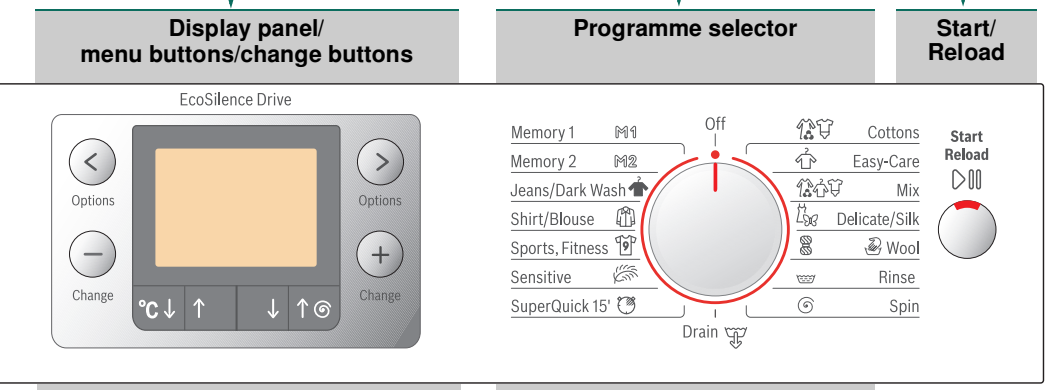
Insert for liquid detergent (depending on model), → page 10  
**Compartment II:** detergent for main wash, softener, bleach, stain remover  
**Compartment ⌘:** fabric softener, starch  
**Compartment I:** Detergent for prewash

## Open the door/set the programme

**\*\*If the childlock is active → deactivate it, page 5.**  
Follow the instructions in the display panel.

**Programmes**  
Detailed overview of programmes → page 7. Temperature and spin speed can be selected individually, depending on the selected programme and programme progress.

|                        |   |
|------------------------|---|
| <b>Cottons</b>         | Hard-wearing fabrics  |
| <b>Easy-care</b>       | Easy-care fabrics   |
| <b>Mix</b>             | Different types of laundry  |
| <b>Delicate/Silk</b>   | Delicate washable fabrics   |
| <b>Wool</b>            | Hand/machine-washable wool  |
| <b>Rinse</b>           | Extra rinse with spin   |
| <b>Spin</b>            | Extra spin with selectable spin speed   |
| <b>Drain</b>           | Empty the rinsing water with <b>Rinse stop</b> (no final spin)                              |
| <b>SuperQuick 15'</b>  | Extra short programme   |
| <b>Sensitive</b>       | Hard-wearing fabrics; longer washing and additional rinsing for particularly sensitive skin |
| <b>Sports, Fitness</b> | Fabrics made from microfibre  |
| <b>Shirt/Blouse</b>    | Non-iron shirts   |
| <b>Jeans/Dark Wash</b> | Dark-coloured fabrics   |
| <b>Memory M1</b>       | Personalised programme → page 6   |
| <b>Memory M2</b>       | Personalised programme → page 6   |



**Display panel/ menu buttons/change buttons**  
Options:   
Change:

**Programme selector**  
Memory 1 Off Cottons Easy-Care Mix Delicate/Silk Wool Rinse Spin  
Jeans/Dark Wash Shirt/Blouse Sports, Fitness Sensitive SuperQuick 15'

**Start/Reload**  
Start Reload

**Programme selector for switching the machine on and off and for selecting the programme.** Can be turned in either direction.

**All buttons are sensitive and need only to be touched lightly.**

## Loading the laundry

Observe the load indicator in the display → page 9

## Adding detergent and care products

Observe the dosage recommendation for detergent in the display → page 9

## Close the washing machine door

**Make individual settings**  
→ page 5.  
**Stain selection** → page 6. **Select the temperature/ spin speed** → page 2.

## Washing



## Washing

**Select Start/Reload**

## Switching off

Turn the programme selector to **off**.

## Turning the tap off

Not required for Aqua-Stop models → *Installation instructions, page 7.*

## Removing washing

Open the washing machine door and remove the washing.  
If **Rinse stop** (no final spin) is active: turn the programme selector to **Drain** or **Spin**. Select the spin speed if necessary. Press **Start/Reload**.

- Remove any foreign objects - risk of rusting.
- Leave the washing machine door and detergent drawer open so that any residual water can evaporate.

## Programme has ended when...

... **finished**, **Remove washing** appears on the display panel.

## Interrupting the programme

Programmes at high temperatures:  
– Cool washing: select **Rinse**.  
– Press **Start/Reload**.  
Programmes at low temperatures:  
– Select **Spin** or **Drain**.  
– Press **Start/Reload**.

## Changing the programme, if ...

... you have selected the wrong programme by mistake:  
– Reselect the programme.  
– Press **Start/Reload**. The new programme starts from the beginning.

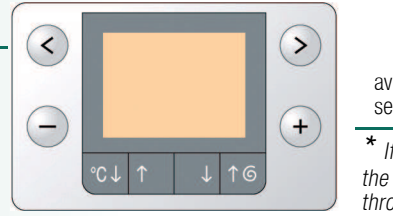
## Reloading laundry, if ... → page 6

... **Start/Reload** is selected and **Top-up possible** appears in the display panel.

- ! Do not leave the washing machine door open for too long as water from the washing could leak out.
- ! Load indicator not active **when reloading**. Press **Start/Reload**.

## Individual settings

**</> To select menu options**  
Information on programme sequence; with progress or load bar, as appropriate



**–/+ To change settings**  
available depending on the selected

**\* If the buttons are held for longer, the appliance automatically scrolls through the subsequent setting options**

**Options** see also the *Overview of programmes*

**VarioPerfect\***  
 **SpeedPerfect** - Standard - **EcoPerfect**

**End time\***  
When you select the programme, the respective time to the end of the programme is displayed. It can be adjusted to a maximum of 24 hours in 1-hour increments. Press the **–/+ change** buttons repeatedly until the desired number of hours is displayed (h=hour). It is not possible to make adjustments once the programme has started.

**Prewash** OFF - ON  
For heavily soiled items. Prewash at max. 30 °C

**Easy-iron** OFF - ON  
Special spin sequence with subsequent fluffing. Gentle final spin at reduced speed. Residual moisture in the laundry is increased slightly.

**Signal\***  
Select the volume of the information signals.  
OFF - quiet - medium - loud - very loud

**Button signal\***  
Select the volume of the button signals.  
OFF - quiet - medium - loud - very loud

**Language\***  
Select the language of the display texts.

**Water Plus** OFF - ON  
Increased water level. Gentler treatment of the laundry.

**Rinse stop** OFF - ON  
After the final rinse, the laundry remains in the water.

**Rinse Plus\***  
max. +3 *Rinse cycles*  
Extra rinsing. Prolonged programme duration. Recommended use: for particularly sensitive skin and/or in areas with very soft water.

**Stain selection\***  
Automatic treatment of stubborn stains → page 6.

**Display symbols**  
 **Childproof lock/appliance lock** OFF - ON

You can lock the washing machine to prevent the functions you have set from being changed inadvertently.  
**To activate/deactivate:** press and hold the **< menu** button for 5 seconds.  
Note: the childproof lock remains activated until you start the next programme, even after the machine has been switched off.  
Deactivate the childproof lock again when you have switched on the machine.

**Foam detection**  
Too much foam in the washing machine. Foam detection system active - special programme sequence to reduce foam.

## Individual settings

## Stain selection

**The correct treatment for every stain**  
Do not let stains dry. Remove any solid residue beforehand. Sort items of laundry as usual and load the washing machine. Select a type of stain (cannot be combined).

A total of 16 different stains can be selected. The washing machine adjusts the washing temperature, drum movement and soaking time to suit the type of stain. Hot or cold water, gentle or intensive washing control (thanks to the new drum structure) and a long or short soaking time ensure that the wash programme has a special sequence for each type of stain.

A stain type can be added to each programme via the menu buttons/change buttons.

The result: optimum stain treatment without the use of additional special detergents.

## Stains

|                      |                              |                   |
|----------------------|------------------------------|-------------------|
| <b>Baby food</b>     | <b>Cosmetics</b>             | <b>Tea</b>        |
| <b>Blood</b>         | <b>Red wine stain</b>        | <b>Tomato</b>     |
| <b>Egg</b>           | <b>Chocolate</b>             | <b>Strawberry</b> |
| <b>Soil and sand</b> | <b>Sweat</b>                 | <b>Orange</b>     |
| <b>Grass</b>         | <b>Bottom sock dirt</b>      |                   |
| <b>Coffee</b>        | <b>Butter and edible oil</b> |                   |

## Stain treatment in detail - 2 examples

|       |   |
|-------|---|
| Egg   | Soaked in lukewarm water, selected wash cycle with a higher water level and additional rinse cycles to remove particles |
| Blood | Blood is first "loosened" in cold water, then the selected wash programme starts.                                       |

For the other types of stain, we have formulated comparable solutions in our intensive studies.

## Reload

If you want to add additional items of laundry after the programme has started, choose **Start/Reload**. The machine checks whether reloading is possible. Follow the instructions in the display panel.

For safety reasons, the washing machine door remains locked when the water level and/or temperature is high, or while the drum is rotating.  
To continue the programme, press the **Start/Reload** button.

## Personalised programme

You can store a programme and all its settings permanently under **Memory M1** and **Memory M2**:  
– Turn the programme selector to **Memory M1** or **Memory M2**.  
– Select the desired programme using the **–/+** buttons.  
– Select the desired option with the **</>** buttons and, if necessary, change the setting with the **–/+** buttons.  
– Make your desired settings with the **°C** (temperature) and (spin) buttons.  
– Press the **Start/Reload** button.

# Overview of programmes → table of consumption values on page 8 and instructions on page 9.

| Programmes                   | °C            | max.        | Type of laundry   | Options; notes  |
|------------------------------|---------------|-------------|---|---|
| <b>Cottons</b>               | – – ... 90 °C | 8 kg/ 5 kg* | Hard-wearing fabrics; heat-resistant fabrics made of cotton or linen  | <b>SpeedPerfect</b> , <b>EcoPerfect</b> , <b>Prewash</b> , <b>Easy-Iron</b> , <b>Water Plus</b> , <b>Rinse Plus</b> , <b>Stains</b> , <b>Rinse stop</b>   |
| <b>Sensitive</b>             | – – ... 60 °C |             | Hard-wearing fabrics made of cotton or linen  | <b>SpeedPerfect</b> , <b>Easy-Iron</b> , <b>Water Plus</b> , <b>Rinse Plus</b> , <b>Stains</b> , <b>Rinse stop</b> ; for particularly sensitive skin, longer wash cycle at selected temperature, higher water level, additional rinse cycle |
| <b>Easy-care</b>             | – – ... 60 °C |             | Easy-care fabrics made of cotton, linen, synthetic fibres or blended fabrics                                  | <b>SpeedPerfect</b> , <b>EcoPerfect</b> , <b>Prewash</b> , <b>Easy-Iron</b> , <b>Water Plus</b> , <b>Rinse Plus</b> , <b>Stains</b> , <b>Rinse stop</b>   |
| <b>Mix</b>                   | – – ... 40 °C | 3.5 kg      | Fabrics made of cotton and easy-care fabrics  | <b>SpeedPerfect</b> , <b>EcoPerfect</b> , <b>Prewash</b> , <b>Easy-Iron</b> , <b>Water Plus</b> , <b>Rinse Plus</b> , <b>Stains</b> , <b>Rinse stop</b> together  |
| <b>Jeans/Dark Wash</b>       | – – ... 40 °C |             | Dark-coloured fabrics made of cotton and dark easy-care fabrics   | <b>SpeedPerfect</b> , <b>EcoPerfect</b> , <b>Prewash</b> , <b>Easy-Iron</b> , <b>Water Plus</b> , <b>Rinse Plus</b> , <b>Stains</b> , <b>Rinse stop</b> ; reduced rinse - spin and final spin   |
| <b>Shirts/Blouses</b>        | – – ... 60 °C |             | Non-iron shirts made of cotton, linen, synthetic fibres or blended fabrics                                    | <b>SpeedPerfect</b> , <b>EcoPerfect</b> , <b>Prewash</b> , <b>Easy-Iron</b> , <b>Water Plus</b> , <b>Rinse Plus</b> , <b>Stains</b> , <b>Rinse stop</b> ; gentle spin only, hang up dripping wet  |
| <b>Delicates/Silk</b>        | – – ... 40 °C |             | For delicate, washable fabrics, e.g. made of silk, satin, synthetic fibres or blended fabrics (e.g. curtains) | <b>SpeedPerfect</b> , <b>EcoPerfect</b> , <b>Prewash</b> , <b>Easy-Iron</b> , <b>Water Plus</b> , <b>Rinse Plus</b> , <b>Stains</b> , <b>Rinse stop</b> ; gentle spin between the rinse cycles only   |
| <b>Wool</b>                  | – – ... 40 °C | 2 kg        | Hand or machine-washable fabrics made of wool or containing wool  | <b>Rinse stop</b> : particularly gentle wash programme to prevent shrinkage of laundry, longer breaks during the programme (fabrics rest in the detergent solution)   |
| <b>SuperQuick 15'</b>        | – – ... 40 °C |             | Easy-care fabrics made of cotton, linen, synthetic fibres or blended fabrics                                  | <b>Rinse stop</b> : short programme, approx. 15 minutes, suitable for lightly soiled washing  |
| <b>Sport, Fitness</b>        | – – ... 40 °C |             | Easy-care fabrics made of cotton, linen, synthetic fibres or blended fabrics                                  | <b>Rinse stop</b> : short programme, approx. 15 minutes, suitable for lightly soiled washing  |
| <b>Additional programmes</b> | – – ... 40 °C |             | Fabrics made from microfibre  | <b>SpeedPerfect</b> , <b>EcoPerfect</b> , <b>Water Plus</b> , <b>Rinse Plus</b> , <b>Stains</b> , <b>Rinse stop</b> , <b>Rinse</b> , <b>Spin</b> , <b>Drain</b>   |



## Safety instructions

- Read the instruction manual and installation instructions and all other information enclosed with the washing machine and act accordingly.
- Retain the documents for subsequent use.

**Risk of electric shock**

- Never pull the cable to disconnect the mains plug.
- Only insert/pull out the mains plug with dry hands.

**Danger to life**

For worn-out appliances:

- Disconnect the mains plug.
- Sever the mains cable and discard along with the plug.
- Destroy the lock on the washing machine door. This will prevent children from locking themselves in and risking their lives.

**Danger of suffocation**

- Keep packaging, film and packaging parts out of the reach of children.

**Risk of poisoning**

**Risk of explosion**

- Items of laundry pretreated with cleaning agents containing solvents, e.g. stain remover/cleaning solvent may cause an explosion after being loaded into the washing machine. Rinse items of laundry thoroughly by hand beforehand.

**Risk of injury**

- The washing machine door can become very hot.
- Be careful when draining hot detergent solution.
- Do not climb onto the washing machine.
- Do not lean on the open washing machine door.
- Do not reach into the drum if it is still rotating.

## Consumption values

| Programme              | Option         | Load   | Electricity consumption*** | Water*** | Programme duration*** |
|------------------------|----------------|--------|----------------------------|----------|-----------------------|
| 👕👖 Cottons 30 °C**     |                | 8 kg   | 0,35 kWh                   | 57 l     | 2:06 h                |
| 👕👖 Cottons 40 °C**     |                | 8 kg   | 0,97 kWh                   | 57 l     | 2:16 h                |
| 👕👖 Cottons 60 °C**     |                | 8 kg   | 1,36 kWh                   | 57 l     | 2:26 h                |
| 👕👖 Cottons 60 °C       | 🌿 EcoPerfect * | 8 kg   | 0,87 kWh                   | 57 l     | 4:00 h                |
| 👕👖 Cottons 90 °C       |                | 8 kg   | 2,34 kWh                   | 68 l     | 2:16 h                |
| 👕👖 Mix 40 °C**         |                | 3,5 kg | 0,47 kWh                   | 37 l     | 0:53 h                |
| 👕 Easy-Care 40 °C**    |                | 3,5 kg | 0,55 kWh                   | 41 l     | 1:35 h                |
| 👗 Delicate/Silk (cold) |                | 2 kg   | 0,04 kWh                   | 35 l     | 0:41 h                |
| 👗 Delicate/Silk 30 °C  |                | 2 kg   | 0,14 kWh                   | 35 l     | 0:41 h                |
| 👕 Wool 🌀 (cold)        |                | 2 kg   | 0,06 kWh                   | 40 l     | 0:40 h                |
| 👕 Wool 🌀 30 °C         |                | 2 kg   | 0,16 kWh                   | 40 l     | 0:40 h                |

\* Programme setting for testing and energy labelling in accordance with AS/NZS2040.1:2005. Cottons 60 EcoPerfect 1600 spin is the Recommended program for 8kg Normal soiled load.

\*\* Programme setting for testing according to the currently valid version of IEC60456. Note for comparative testing: to test using the test programmes, wash using the specified load amount and maximum spin speed.

\*\*\*The values deviate from the indicated values depending on water pressure, hardness, and inlet temperature, ambiente temperature, type, amount and soiling of the laundry, detergent used, fluctuations in the power supply and selected additional functions.

Downloaded From WashingMachine-Manual.com Manuals

## Important information

**Before washing for the first time**

Do not load any laundry into the machine. Turn on the tap. Add the following to compartment **II**:

- approx. 1 litre water
- detergent (dosage according to the manufacturer's instructions for light soiling and the appropriate degree of water hardness)

Set the programme selector to **Easy-care 60 °C** and select **Start/Reload**. At the end of the programme, turn the programme selector to **Off**.

**Protecting the laundry and the machine**

- Empty pockets.
- Look out for metal items (paperclips, etc.).
- Wash delicates in a laundry bag (tights, curtains, underwired bras).
- Fasten zips, do up any buttons.
- Brush sand out of pockets and collars.
- Remove curtain fittings or place in the laundry bag.

**Loading the laundry**

Insert large and small items of laundry. Take care not to trap items of laundry between the washing machine door and the rubber seal.

**Laundry with varying degrees of soiling**

Wash new items of clothing separately.

|       |  |
|-------|--|
| light | Do not prewash. If required, select the additional <b>SpeedPerfect</b> function. |
| heavy | Pre-treat any stains as necessary.   |

Do not load as much laundry. Select the program with Prewash.

**Soaking**

Load laundry of the same colour.

Pour soaking agent/detergent into compartment **II** in accordance with the manufacturer's instructions. Turn the programme selector to **Cottons 30 °C** and press **Start/Reload**. After approx. 10 minutes, press **Start/Reload** to pause the programme. Once the required soaking time has elapsed, press **Start/Reload** again to continue the programme, or select a different programme.

**Starching**

Laundry must not be treated with fabric softener

Starching is possible in all wash programmes if liquid starch is used. Pour starch into the fabric softener compartment in accordance with the manufacturer's instructions (rinse first if necessary).

**Dyeing/bleaching**

Dye should only be used in normal household quantities. Salt may damage stainless steel. Always follow the dye manufacturer's instructions. Do **not** use the washing machine for bleaching clothes.

**Load indicator**

The load sensor detects how heavily the washing machine is loaded. The laundry is not weighed.

**Recommended dosage**

Based on the selected programme and the detected load, the recommended dosage function provides a recommendation for the detergent dosage in %. The % figure refers to the recommendation of the detergent manufacturer.

**Automatic load sensing**

Independently of the load indicator, the automatic load sensing function uses additional sensors to adapt the water and power consumption ideally to each programme, depending on the type of fabric and the load.

## Insert for liquid detergent

Position the insert for dispensing liquid detergent:

- Remove the detergent drawer completely → *page 10*.
- Slide the insert forwards.

Do not use the insert (slide upwards):

- for gel detergents and washing powder,
- for programmes with **Prewash** or the **end time** option.

## Care

**Machine housing, control panel**

- Wipe with a soft, damp cloth.
- Do not use any abrasive cloths, scourers or cleaning agents (stainless steel cleaners).
- Remove detergent and cleaning agent residue immediately.
- Do not clean with a jet of water.

**Cleaning the detergent drawer ...**

... if it contains detergent or fabric softener residues.

1. Pull out, press insert down, remove drawer completely.
2. To remove the insert: press the insert upwards from below with your finger.
3. Clean the detergent dispenser tray and insert with water and a brush and dry it.
4. Attach the insert and engage (connect the cylinder to the guide pin).
5. Push in the detergent drawer.

**Drum**

Leave the detergent drawer open so that any residual water can evaporate.

**Descaling**

No laundry in the machine.

This is not necessary if the detergent is dosed correctly. However, if it is necessary, follow the instructions of the descaler manufacturer. Suitable descaling products can be purchased from our website or after-sales service (→ *page 13*).

## Information on the display panel

|   |  |
|---|--|
| Door open?  | Close the washing machine door properly; laundry may be caught.  |
| Tap closed?   | Open the tap completely, supply hose kinked or trapped; Clean the filter → <i>page 11</i> , Water pressure too low.  |
| Pump blocked?   | Detergent solution pump blocked; Clean the detergent solution pump → <i>page 11</i> . Drainage hose/waste pipe blocked; Clean the drainage hose at the siphon → <i>page 11</i> .                                 |
| Top-up not possible; water level too high or Temperature too high | Not possible to add more laundry. To continue, press the Start/Reload button.  |
| F: 23   | Water in the base tub, appliance leaking. Call the after-sales service.  |
| F: 34   | Washing machine door cannot be locked. Open the washing machine door and close it with an audible "click"; switch the appliance off and on again; set the programme and make your settings; start the programme. |
| Other displays  | Switch off the appliance, wait for 5 seconds and switch it back on. If the display appears again, call the after-sales service → <i>page 13</i> .  |

## Information about blockages

**Detergent solution pump**

Turn the programme selector to **Off** and disconnect the mains plug.

1. Open and remove the service flap.
2. Take the drainage hose out of the retainer. Remove the sealing cap, allow the detergent solution to flow out. Push the sealing cap back on.
3. Carefully unscrew the pump cover (residual water).
4. Clean the interior, pump cover thread and pump housing (the impeller in the detergent solution pump must rotate).
5. Replace the pump cover and screw it on tightly. The handle is vertical. Place the drainage hose back into the retainer.
6. Place the service flap back on and close.

**Drainage hose at the siphon**

Turn the programme selector to **Off** and disconnect the mains plug.

1. Loosen the hose clamp, carefully remove the drainage hose (residual water).
2. Clean the drainage hose and siphon connecting piece.
3. Reattach the drainage hose and secure the connection with the hose clamp.

**Filter in the water supply**

- Risk of electric shock**
- Do not immerse the Aqua-Stop safety device in water (it contains an electrical valve).
- Reduce the water pressure in the supply hose:
1. Turn off the tap.
  2. Select any programme (except **Spin** / **Drain**).
  3. Choose **Start/Reload**. Let the programme run for approximately 40 seconds.
  4. Turn the programme selector to **Off**. Disconnect the mains plug.

5. Clean the filter:
- Disconnect the hose from the tap. Clean the filter with a small brush.
- and/or** for Standard and Aqua-Secure models: Remove the hose from the rear of the appliance. Remove the filter with pliers and clean.

6. Connect the hose and check for leaks.

## What to do if ...

- Water is leaking out. – Attach/replace the drainage hose correctly. – Tighten the screw connection of the supply hose.
- No water supply. – **Start/Reload** not selected? – Tap not turned on? – Filter blocked? Clean the filter → *page 11*. – Supply hose kinked or trapped?
- Washing machine door cannot be opened. – Safety function active. Programme termination? → *page 4*. – **Rinse stop** (no final spin) selected? → *page 3, 4*. – Can be opened by emergency release only? → *page 13*.
- Programme does not start. – **Start/Reload** or **end time** selected? – Washing machine door closed? – Childproof lock active? Deactivate → *page 5*.
- Detergent solution is not drained. – **Rinse stop** (no final spin) selected? → *page 3, 4*. – Clean the detergent solution pump → *page 11*. – Clean the waste pipe and/or drainage hose.
- Water not visible in the drum. – Not a fault - water below the visible area.
- Spin result not satisfactory. Laundry wet/too damp. – Not a fault - the unbalanced load detection system has cancelled the spin cycle due to uneven distribution of the laundry. Distribute large and small items of laundry evenly in the drum. – **Easy-Iron** selected? → *page 5*. – Speed selected too low? → *page 5*.
- Spin cycle performed several times. – Not a fault - unbalanced load detection system is adjusting the imbalance.
- Residual water in the compartment for care products. – Not a fault - the action of the care product is not affected. – Clean the insert if necessary → *page 10*.
- Odour formation in the washing machine. – Run programme **Cottons 90 °C** without laundry. Use standard detergent.
- The status indicator lights. Appliance has detected a detergent overload. – Too much detergent used? Mix 1 tablespoon of fabric softener with ½ litre of water and pour into compartment **II** (not with outdoor or down fabrics). – Reduce the detergent dosage for the next wash cycle.
- Loud noise generated, vibrations and "wandering" during the spin cycle. – Are the appliance feet fixed? Secure the appliance feet → *Installation instructions*. – Transportation safety devices removed? Remove the transportation safety devices → *Installation instructions*.
- Display panel/indicator lamps do not function during operation. – Power cut? – Circuit breakers tripped or fuses blown? Reset the circuit breakers or change the fuses. – If the fault occurs repeatedly, call the after-sales service.
- Programme sequence longer than usual. – Not a fault - unbalanced load detection system adjusts imbalance by repeatedly distributing the laundry. – Not a fault - foam detection system active - several rinse cycles are added.

## What to do if ...

- Detergent residues on the laundry. – Occasionally, phosphate-free detergents contain water-insoluble residues. – Select **Rinse** or brush the laundry after washing.
  - In Reload mode, **Start/Reload** flashes very quickly and a signal sounds. – Water level too high. Not possible to add laundry. Close the washing machine door immediately if necessary. – To continue, press the **Start/Reload** button.
- If you cannot correct a fault yourself (switching on/off) or a repair is required:
- Turn the programme selector to **Off** and remove the mains plug from the socket.
  - Turn off the water supply and call the after-sales service → *page 13*.

## Emergency release

The programme continues when the power supply is restored. However, if the laundry has to be removed, the washing machine door can be opened as follows:

- Risk of scalding.**
- The detergent solution and laundry may be hot. If possible, leave it to cool down. Do not reach into the drum if it is still rotating. Do not open the washing machine door if water can be seen through the glass.
1. Turn the programme selector to **Off** and disconnect the mains plug.
  2. Drain the detergent solution → *page 11*.
  3. Pull the emergency release downwards with a tool and release. Washing machine door can then be opened.

## After-sales service

- If you cannot rectify the fault yourself (Troubleshooting → *page 12, 13*), please contact our after-sales service. We will always find a suitable solution and will avoid a visit from a service technician wherever possible.
  - You can find the contact details for your nearest after-sales service here or in the after-sales service directory (depending on model). You find the regional service contact of all countries in the enclosed service booklet.
  - Please give the after-sales service the product number (E no.) and the production number (FD) of the appliance.
- |                |                   |
|----------------|-------------------|
| E-Nr. _____    | FD _____          |
| Product number | Production number |
- This information can be found: on the inside of the washing machine door\*/ opened service flap\* and rear of the appliance. \*depending on the model
- **Rely on the professionalism of the manufacturer.** Please contact us. This will ensure that the repair is carried out by trained service technicians who arrive equipped with genuine spare parts for your appliance.



Washing machine

en Instruction manual



# Your washing machine

**Congratulations** - you have opted for a modern, high-quality domestic appliance manufactured by Bosch. This washing machine is distinguished by its economical water and energy consumption. Each machine that leaves our factory is inspected thoroughly to ensure that it functions properly and is in perfect condition.

For further information about products, accessories, spare parts and services visit our web site: [www.bosch-home.com](http://www.bosch-home.com) or contact our after-sales service centres.

## Contents

|                                     | Page  |
|-------------------------------------|-------|
| Intended use                        | 1     |
| Programmes                          | 1     |
| Setting and adjusting the programme | 3     |
| Washing                             | 3/4   |
| After washing                       | 4     |
| Individual settings                 | 5/6   |
| Overview of programmes              | 7     |
| Safety instructions                 | 8     |
| Consumption values                  | 8     |
| Important information               | 9     |
| Insert for liquid detergent         | 10    |
| Care                                | 10    |
| Information on the display panel    | 10    |
| Information about blockages         | 11    |
| What to do if...                    | 12/13 |
| Emergency release                   | 13    |
| After-sales service                 | 13    |



### Environmental protection/Conservation tips

- Always fill the washing machine with a maximum amount of laundry for the relevant programme.
- Wash normally soiled laundry without a prewash.
- Instead of the **Cottons 60 °C** programme, select the **Cottons 60 °C** and the **EcoPerfect** option. Comparable cleaning result with significantly lower energy consumption.
- Measure the detergent according to the manufacturer's instructions and water hardness.
- If the laundry is then dried in the tumble dryer, select the appropriate spin speed according to the instructions of the dryer manufacturer.

### Automatic stain removal

Automatic treatment of 16 different types of stain possible. No pretreatment of stains required - the washing machine automatically

adapts the washing process → [page 6, manual.com Manuals](http://page6.manual.com)

## Intended use

- For domestic use only
- For machine-washable fabrics and hand-washable wool in detergent solution
- To be operated with cold drinking water and commercially available detergents and care products which are suitable for use in washing machines



- Observe the safety instructions on page 8.
- Do not leave children unattended near the washing machine.
- The washing machine is not to be used by children or persons not familiar with the operating instructions.
- Keep pets away from the washing machine.



Read these instructions and the separate installation instructions before operating the washing machine.

## Programmes

Detailed overview of programmes → page 7.  
Temperature and spin speed can be selected individually, depending on the selected programme and programme progress.

|                         |   |
|-------------------------|---|
| <b>Cottons</b>          | Hard-wearing fabrics  |
| <b>Easy-care</b>        | Easy-care fabrics   |
| <b>Mix</b>              | Different types of laundry  |
| <b>Delicate/Silk</b>    | Delicate washable fabrics   |
| <b>Wool</b>             | Hand/machine-washable wool  |
| <b>Rinse</b>            | Extra rinse with spin   |
| <b>Spin</b>             | Extra spin with selectable spin speed   |
| <b>Drain</b>            | Empty the rinsing water with <b>Rinse stop</b> (no final spin)                              |
| <b>SuperQuick 15'</b>   | Extra short programme   |
| <b>Sensitive</b>        | Hard-wearing fabrics; longer washing and additional rinsing for particularly sensitive skin |
| <b>Sports, Fitness</b>  | Fabrics made from microfibre  |
| <b>Shirt/Blouse</b>     | Non-iron shirts   |
| <b>Jeans/ Dark Wash</b> | Dark-coloured fabrics   |
| <b>Memory M1</b>        | Personalised programme → page 6   |
| <b>Memory M2</b>        | Personalised programme → page 6   |

## Preparation Before washing for the first time

Wash once without any laundry → page 10



Correct installation according to the separate Installation instructions.



### Check the machine

- Never use a damaged machine.
- Inform the after-sales service.



### Connecting the mains plug



Make sure your hands are dry.  
Take hold of the plug only.



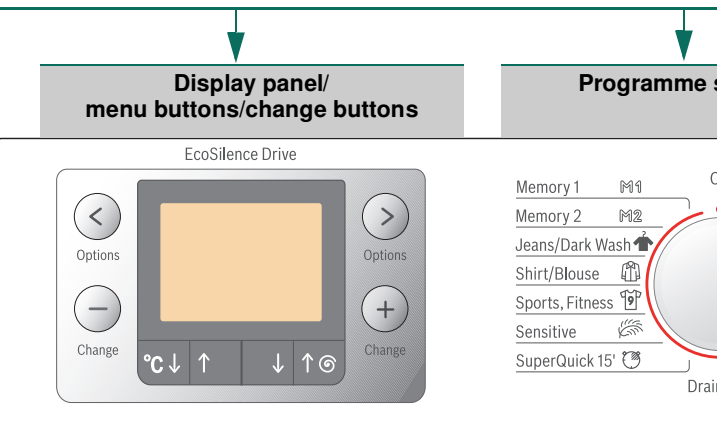
### Turn the tap on

Insert for liquid detergent (depending on model), → page 10

**Compartment II:** detergent for main wash, softener, bleach, stain remover

**Compartment** : fabric softener, starch

**Compartment I:** Detergent for prewash



**--, 20° - 90° °C**

Set the temperature (– = cold)

**0,400 - 1600\***

Set the spin speed  
(\* model-dependent) (0=no spin during the programme sequence)



All buttons are sensitive and need only to be touched lightly.

**i** Programme switching th and off and the program turned in eit

## Sorting the laundry

Follow the manufacturer's care information. According to the information on the care labels. Do not exceed the maximum load → page 7. Observe the important information → page 9.



## Detergents and care products

Measure accordingly:

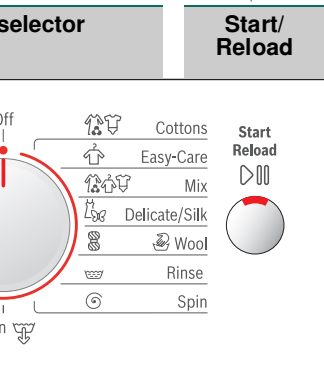
Amount of laundry, soiling, water hardness (ask your water supply company) and manufacturer's instructions.

Models without insert for liquid detergent: Pour liquid detergent into the appropriate dispenser and place in the drum. During operation: open the detergent drawer carefully.

**i** Dilute thick fabric softener and care products with water. This prevents blockages.

## Open the door/set the programme

**i** \*\*If the childlock is active → deactivate it, page 5. Follow the instructions in the display panel.



selector for the machine on for selecting time. Can be in other direction.

## Loading the laundry

**i** Observe the load indicator in the display → page 9

## Adding detergent and care products

**i** Observe the dosage recommendation for detergent in the display → page 9



## Close the washing machine door

Make individual settings → page 5. Stain selection → page 6. Select the temperature/spin speed → page 2.

## Washing

Detergent drawer with compartments I, II, ♂  
Washingmachinedoor  
Controlpanel  
Washing machine door handle



Serviceflap

## Washing

Select ▷ Start/Reload

## Switching off

Turn the programme selector to **off**.

## Turning the tap off

Not required for Aqua-Stop models → *Installation instructions*, page 7.

## Removing washing

Open the washing machine door and remove the washing.

If **Rinse stop** (no final spin) is active: turn the programme selector to **Drain** or **Spin**. Select the spin speed if necessary. Press ▷ **Start/Reload**.

**i** – Remove any foreign objects - risk of rusting.  
– Leave the washing machine door and detergent drawer open so that any residual water can evaporate.

## Programme has ended when...

... **finished**, **Remove washing** appears on the display panel.

## Interrupting the programme

Programmes at high temperatures:

– Cool washing: select **Rinse**.  
– Press ▷ **Start/Reload**.

Programmes at low temperatures:

– Select **Spin** or **Drain**.  
– Press ▷ **Start/Reload**.

## Changing the programme, if ...

... you have selected the wrong programme by mistake:  
– Reselect the programme.  
– Press ▷ **Start/Reload**. The new programme starts from the beginning.

## Reloading laundry, if ... → page 6

... ▷ **Start/Reload** is selected and **Top-up possible** appears in the display panel.

**i** – Do not leave the washing machine door open for too long as water from the washing could leak out.  
– Load indicator not active **when reloading**. Press ▷ **Start/Reload**.

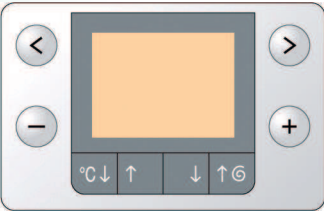


6

Individual settings

◀/▶ To select menu options

Information on programme sequence; with progress or load bar, as appropriate



−/+ To change settings

available depending on the selected

\* If the buttons are held for longer, the appliance automatically scrolls through the subsequent setting options

Options see also the Overview of programmes

VarioPerfect\*

- ⌘ SpeedPerfect - Standard
- ⊗ EcoPerfect

**SpeedPerfect:** For washing in a shorter time with a washing outcome comparable to that of the standard programme. Maximum load → Overview of programmes, page 7.  
**EcoPerfect:** For saving energy with a washing performance comparable to that of the standard programme.

**End time\*** When you select the programme, the respective time to the end of the programme is displayed. It can be adjusted to a maximum of 24 hours in 1-hour increments. Press the **−/+ change** buttons repeatedly until the desired number of hours is displayed (h=hour). It is not possible to make adjustments once the programme has started.

**⏸ Prewash**  
OFF - ON For heavily soiled items. Prewash at max. 30 °C

**⏸ Easy-iron**  
OFF - ON Special spin sequence with subsequent fluffing. Gentle final spin at reduced speed. Residual moisture in the laundry is increased slightly.

**🔊 Signal\*** Select the volume of the information signals.  
OFF - quiet - medium - loud - very loud

**Button signal\*** Select the volume of the button signals.  
OFF - quiet - medium - loud - very loud

**Language\*** Select the language of the display texts.

**💧 Water Plus**  
OFF - ON Increased water level. Gentler treatment of the laundry.

**🛑 Rinse stop**  
OFF - ON After the final rinse, the laundry remains in the water.

**🔄 Rinse Plus\***  
max. +3 Rinse cycles Extra rinsing. Prolonged programme duration. Recommended use: for particularly sensitive skin and/or in areas with very soft water.

**👕 Stain selection\*** Automatic treatment of stubborn stains → page 6.

Display symbols

**🔒 Childproof lock/appliance lock**  
OFF - ON You can lock the washing machine to prevent the functions you have set from being changed inadvertently.  
**To activate/deactivate:** press and hold the **◀ menu** button for 5 seconds.  
Note: the childproof lock remains activated until you start the next programme, even after the machine has been switched off.  
Deactivate the childproof lock again when you have switched on the machine.

**👤 Foam detection** Too much foam in the washing machine. Foam detection system active - special programme sequence to reduce foam.

Individual settings

Stain selection



The correct treatment for every stain

Do not let stains dry. Remove any solid residue beforehand. Sort items of laundry as usual and load the washing machine. Select a type of stain (cannot be combined).

A total of 16 different stains can be selected. The washing machine adjusts the washing temperature, drum movement and soaking time to suit the type of stain. Hot or cold water, gentle or intensive washing control (thanks to the new drum structure) and a long or short soaking time ensure that the wash programme has a special sequence for each type of stain.

A stain type can be added to each programme via the menu buttons/change buttons.

The result: optimum stain treatment without the use of additional special detergents.

Stains

|                      |                              |                   |
|----------------------|------------------------------|-------------------|
| <b>Baby food</b>     | <b>Cosmetics</b>             | <b>Tea</b>        |
| <b>Blood</b>         | <b>Red wine stain</b>        | <b>Tomato</b>     |
| <b>Egg</b>           | <b>Chocolate</b>             | <b>Strawberry</b> |
| <b>Soil and sand</b> | <b>Sweat</b>                 | <b>Orange</b>     |
| <b>Grass</b>         | <b>Bottom sock dirt</b>      |                   |
| <b>Coffee</b>        | <b>Butter and edible oil</b> |                   |

Stain treatment in detail - 2 examples

|       |   |
|-------|---|
| Egg   | Soaked in lukewarm water, selected wash cycle with a higher water level and additional rinse cycles to remove particles |
| Blood | Blood is first "loosened" in cold water, then the selected wash programme starts.                                       |

For the other types of stain, we have formulated comparable solutions in our intensive studies.

Reload

If you want to add additional items of laundry after the programme has started, choose **▶ Start/Reload**. The machine checks whether reloading is possible. Follow the instructions in the display panel.



For safety reasons, the washing machine door remains locked when the water level and/or temperature is high, or while the drum is rotating.  
To continue the programme, press the **▶ Start/Reload** button.










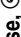

Personalised programme

You can store a programme and all its settings permanently under **Memory M1** and **Memory M2**:

- Turn the programme selector to **Memory M1** or **Memory M2**.
- Select the desired programme using the **−/+** buttons.
- Select the desired option with the **◀/▶** buttons and, if necessary, change the setting with the **−/+** buttons.
- Make your desired settings with the **°C ↓↑** (temperature) and **🌀 ↓↑** (spin) buttons.
- Press the **Start/Reload** button.

## Overview of programmes

## Overview of programmes

| Programmes  | °C            | max.           | Type of laundry  | Options: notes   |
|---|---------------|----------------|--|--|
|  Cottons         | - - ... 90 °C | 8 kg/<br>5 kg* | Hard-wearing fabrics, heat-resistant fabrics made of cotton or linen   | SpeedPerfect*, EcoPerfect, Prewash, Easy-Iron, Water Plus, Rinse Plus, Stains, Rinse stop  |
|  Sensitive       | - - ... 60 °C |                | Hard-wearing fabrics made of cotton or linen   | SpeedPerfect* EcoPerfect, Prewash, Easy-Iron, Water Plus, Rinse Plus, Stains, Rinse stop; for particularly sensitive skin, longer wash cycle at selected temperature, higher water level, additional rinse cycle |
|  Easy-care       | - - ... 60 °C |                | Easy-care fabrics made of cotton, linen, synthetic fibres or blended fabrics   | SpeedPerfect, EcoPerfect, Prewash, Easy-Iron, Water Plus, Rinse Plus, Stains, Rinse stop   |
|  Mix             | - - ... 40 °C | 3.5 kg         | Fabrics made of cotton and easy-care fabrics   | SpeedPerfect, EcoPerfect, Prewash, Easy-Iron, Water Plus, Rinse Plus, Stains, Rinse stop; different types of laundry can be washed together  |
|  Jeans/Dark Wash | - - ... 40 °C |                | Dark-coloured fabrics made of cotton and dark easy-care fabrics  | SpeedPerfect, EcoPerfect, Prewash, Easy-Iron, Water Plus, Rinse Plus, Stains, Rinse stop; reduced rinse + spin and final spin  |
|  Shirts/Blouses  | - - ... 60 °C |                | Non-iron shirts made of cotton, linen, synthetic fibres or blended fabrics   | SpeedPerfect, EcoPerfect, Prewash, Easy-Iron, Water Plus, Rinse Plus, Stains, Rinse stop; gentle spin only, hang up dripping wet   |
|  Delicates/Silk  | - - ... 40 °C |                | For delicate, washable fabrics, e.g. made of silk, satin, synthetic fibres or blended fabrics (e.g. curtains)  | SpeedPerfect, EcoPerfect, Prewash, Easy-Iron, Water Plus, Rinse Plus, Stains, Rinse stop; gentle spin between the rinse cycles only  |
|  Wool            | - - ... 40 °C | 2 kg           | Hand or machine-washable fabrics made of wool or containing wool   | Rinse stop: particularly gentle wash programme to prevent shrinkage of laundry, longer breaks during the programme (fabrics rest in the detergent solution)  |
|  SuperQuick 15'  | - - ... 40 °C |                | Easy-care fabrics made of cotton, linen, synthetic fibres or blended fabrics   | Rinse stop: short programme, approx. 15 minutes, suitable for lightly soiled washing   |
|  Sport, Fitness  | - - ... 40 °C |                | Fabrics made from microfibre   | SpeedPerfect, EcoPerfect, Water Plus, Rinse Plus, Stains, Rinse stop   |
| Additional programmes   |               |                |  Rinse,  Spin,  Drain |  |

\* reduced load for additional  **Speed Perfect** function.

**i Mix 40 °C** with maximum spin speed is ideal as a **short programme**.

Programmes without prewash - add detergent to compartment **II**, programmes with prewash - distribute the detergent between compartments **I** and **II**.

0110/9000522914



WAS32742AU

Robert Bosch Hausgeräte GmbH  
Carl-Wery-Str. 34  
81739 München / Deutschland





# Safety instructions

- Read the instruction manual and installation instructions and all other information enclosed with the washing machine and act accordingly.
- Retain the documents for subsequent use.

- Risk of electric shock**
- Never pull the cable to disconnect the mains plug.
  - Only insert/pull out the mains plug with dry hands.
- Danger to life**
- For worn-out appliances:
- Disconnect the mains plug.
  - Sever the mains cable and discard along with the plug.
  - Destroy the lock on the washing machine door. This will prevent children from locking themselves in and risking their lives.
- Danger of suffocation**
- Keep packaging, film and packaging parts out of the reach of children.
- Risk of poisoning**
- Keep detergents and care products out of the reach of children.
- Risk of explosion**
- Items of laundry pretreated with cleaning agents containing solvents, e.g. stain remover/cleaning solvent may cause an explosion after being loaded into the washing machine. Rinse items of laundry thoroughly by hand beforehand.
- Risk of injury**
- The washing machine door can become very hot.
  - Be careful when draining hot detergent solution.
  - Do not climb onto the washing machine.
  - Do not lean on the open washing machine door.
  - Do not reach into the drum if it is still rotating.

# Consumption values

| Programme            | Option       | Load   | Electricity consumption*** | Water*** | Programme duration*** |
|----------------------|--------------|--------|----------------------------|----------|-----------------------|
| Cottons 30 °C**      |              | 8 kg   | 0,35 kWh                   | 57 l     | 2:06 h                |
| Cottons 40 °C**      |              | 8 kg   | 0,97 kWh                   | 57 l     | 2:16 h                |
| Cottons 60 °C**      |              | 8 kg   | 1,36 kWh                   | 57 l     | 2:26 h                |
| Cottons 60 °C        | EcoPerfect * | 8 kg   | 0,87 kWh                   | 57 l     | 4:00 h                |
| Cottons 90 °C        |              | 8 kg   | 2,34 kWh                   | 68 l     | 2:16 h                |
| Mix 40 °C**          |              | 3.5 kg | 0,47 kWh                   | 37 l     | 0:53 h                |
| Easy-Care 40 °C**    |              | 3.5 kg | 0,55 kWh                   | 41 l     | 1:35 h                |
| Delicate/Silk (cold) |              | 2 kg   | 0,04 kWh                   | 35 l     | 0:41 h                |
| Delicate/Silk 30 °C  |              | 2 kg   | 0,14 kWh                   | 35 l     | 0:41 h                |
| Wool  (cold)         |              | 2 kg   | 0,06 kWh                   | 40 l     | 0:40 h                |
| Wool  30 °C          |              | 2 kg   | 0,16 kWh                   | 40 l     | 0:40 h                |

\* Programme setting for testing and energy labelling in accordance with AS/NZS2040.1:2005. Cottons 60 EcoPerfect 1600 spin is the Recommended program for 8kg Normal soiled load.

\*\* Programme setting for testing according to the currently valid version of IEC60456. Note for comparative testing: to test using the test programmes, wash using the specified load amount and maximum spin speed.

\*\*\*The values deviate from the indicated values depending on water pressure, hardness, and inlet temperature, ambiente temperature, type, amount and soiling of the laundry, detergent used, fluctuations in the power supply and selected additional functions.



# Important information



## Before washing for the first time

Do not load any laundry into the machine. Turn on the tap. Add the following to compartment **II**:

- approx. 1 litre water
- detergent (dosage according to the manufacturer's instructions for light soiling and the appropriate degree of water hardness)

Set the programme selector to **Easy-care 60 °C** and select **Start/Reload**. At the end of the programme, turn the programme selector to **Off**.



## Protecting the laundry and the machine

- Empty pockets.
- Look out for metal items (paperclips, etc.).
- Wash delicates in a laundry bag (tights, curtains, underwired bras).
- Fasten zips, do up any buttons.
- Brush sand out of pockets and collars.
- Remove curtain fittings or place in the laundry bag.



## Loading the laundry

Insert large and small items of laundry. Take care not to trap items of laundry between the washing machine door and the rubber seal.



## Laundry with varying degrees of soiling

|       |  |  |
|-------|--|--|
|       |  | Wash new items of clothing separately.   |
| light |  | Do not prewash. If required, select the additional <b>SpeedPerfect</b> function. |
|       |  | Pre-treat any stains as necessary.   |
| heavy |  | Do not load as much laundry. Select the program with Prewash.                    |



## Soaking

Load laundry of the same colour.

Pour soaking agent/detergent into compartment **II** in accordance with the manufacturer's instructions. Turn the programme selector to **Cottons 30 °C** and press **Start/Reload**. After approx. 10 minutes, press **Start/Reload** to pause the programme. Once the required soaking time has elapsed, press **Start/Reload** again to continue the programme, or select a different programme.



## Starching

Laundry must not be treated with fabric softener

Starching is possible in all wash programmes if liquid starch is used. Pour starch into the fabric softener compartment in accordance with the manufacturer's instructions (rinse first if necessary).



## Dyeing/bleaching

Dye should only be used in normal household quantities. Salt may damage stainless steel. Always follow the dye manufacturer's instructions. Do **not** use the washing machine for bleaching clothes.



## Load indicator

The load sensor detects how heavily the washing machine is loaded. The laundry is not weighed.



## Recommended dosage

Based on the selected programme and the detected load, the recommended dosage function provides a recommendation for the detergent dosage in %. The % figure refers to the recommendation of the detergent manufacturer.



## Automatic load sensing

Independently of the load indicator, the automatic load sensing function uses additional sensors to adapt the water and power consumption ideally to each programme, depending on the type of fabric and the load.

## Insert for liquid detergent model-dependent

Position the insert for dispensing liquid detergent:

- Remove the detergent drawer completely → *page 10*.
- Slide the insert forwards.

Do not use the insert (slide upwards):

- for gel detergents and washing powder,
- for programmes with **Prewash** or the **end time** option.



## Care



- **Risk of electric shock.** Disconnect the mains plug.
- **Risk of explosion.** No solvents.

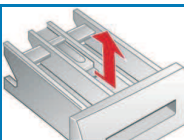
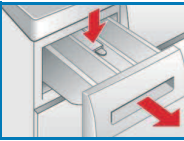
### Machine housing, control panel

- Wipe with a soft, damp cloth.
- Do not use any abrasive cloths, scourers or cleaning agents (stainless steel cleaners).
- Remove detergent and cleaning agent residue immediately.
- Do not clean with a jet of water.

### Cleaning the detergent drawer ...

... if it contains detergent or fabric softener residues.

1. Pull out, press insert down, remove drawer completely.
2. To remove the insert: press the insert upwards from below with your finger.
3. Clean the detergent dispenser tray and insert with water and a brush and dry it.
4. Attach the insert and engage (connect the cylinder to the guide pin).
5. Push in the detergent drawer.



**i** Leave the detergent drawer open so that any residual water can evaporate.

### Drum

Leave the washing machine door open so that the drum can dry out. Rust stains - use chlorine-free cleaning agent, not steel wool.

### Descaling

*No laundry in the machine.*

This is not necessary if the detergent is dosed correctly. However, if it is necessary, follow the instructions of the descaler manufacturer. Suitable descaling products can be purchased from our website or after-sales service (→ *page 13*).

## Information on the display panel depending on model

|   |  |
|---|--|
| Door open?  | Close the washing machine door properly; laundry may be caught.  |
| Tap closed?   | Open the tap completely, supply hose kinked or trapped; Clean the filter → <i>page 11</i> , Water pressure too low.  |
| Pump blocked?   | Detergent solution pump blocked; Clean the detergent solution pump → <i>page 11</i> .<br>Drainage hose/waste pipe blocked; Clean the drainage hose at the siphon → <i>page 11</i> .                              |
| Top-up not possible;<br>water level too high<br>or Temperature too high | Not possible to add more laundry. To continue, press the Start/Reload button.  |
| F: 23   | Water in the base tub, appliance leaking. Call the after-sales service.  |
| F: 34   | Washing machine door cannot be locked. Open the washing machine door and close it with an audible "click"; switch the appliance off and on again; set the programme and make your settings; start the programme. |
| Other displays  | Switch off the appliance, wait for 5 seconds and switch it back on. If the display appears again, call the after-sales service → <i>page 13</i> .  |

## Information about blockages



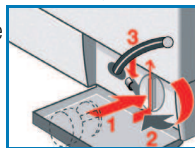
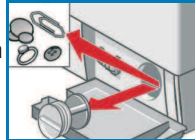
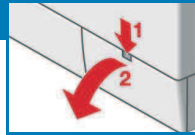
- **Risk of scalding.** Allow the detergent solution to cool down.
- Turn off the tap.



### Detergent solution pump

Turn the programme selector to **Off** and disconnect the mains plug.

1. Open and remove the service flap.
2. Take the drainage hose out of the retainer. Remove the sealing cap, allow the detergent solution to flow out. Push the sealing cap back on.
3. Carefully unscrew the pump cover (residual water).
4. Clean the interior, pump cover thread and pump housing (the impeller in the detergent solution pump must rotate).
5. Replace the pump cover and screw it on tightly. The handle is vertical. Place the drainage hose back into the retainer.
6. Place the service flap back on and close.



To prevent unused detergent from flowing straight into the drain during the next wash: Pour 1 litre of water into compartment **II** and start the **Drain** programme.



### Drainage hose at the siphon

Turn the programme selector to **Off** and disconnect the mains plug.

1. Loosen the hose clamp, carefully remove the drainage hose (residual water).
2. Clean the drainage hose and siphon connecting piece.
3. Reattach the drainage hose and secure the connection with the hose clamp.



### Filter in the water supply



#### Risk of electric shock

*Do not immerse the Aqua-Stop safety device in water (it contains an electrical valve).*

Reduce the water pressure in the supply hose:

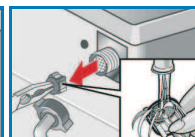
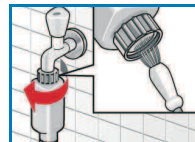
1. Turn off the tap.
2. Select any programme (except **Spin**/ **Drain**).
3. **Choose** **Start/Reload**. Let the programme run for approximately 40 seconds.
4. Turn the programme selector to **Off**. Disconnect the mains plug.

5. Clean the filter:

Disconnect the hose from the tap.  
Clean the filter with a small brush.

**and/or** for Standard and Aqua-Secure models:  
Remove the hose from the rear of the appliance.  
Remove the filter with pliers and clean.

6. Connect the hose and check for leaks.





## What to do if ...

|   |  |
|---|--|
| Water is leaking out.   | <ul style="list-style-type: none"> <li>– Attach/replace the drainage hose correctly.</li> <li>– Tighten the screw connection of the supply hose.</li> </ul>  |
| No water supply.  | <ul style="list-style-type: none"> <li>–  <b>Start/Reload</b> not selected?</li> </ul>   |
| Detergent not dispensed.  | <ul style="list-style-type: none"> <li>– Tap not turned on?</li> <li>– Filter blocked? Clean the filter → <i>page 11</i>.</li> <li>– Supply hose kinked or trapped?</li> </ul>   |
| Washing machine door cannot be opened.  | <ul style="list-style-type: none"> <li>– Safety function active. Programme termination? → <i>page 4</i>.</li> <li>–  <b>Rinse stop</b> (no final spin) selected? → <i>page 3, 4</i>.</li> <li>– Can be opened by emergency release only? → <i>page 13</i>.</li> </ul>  |
| Programme does not start.   | <ul style="list-style-type: none"> <li>–  <b>Start/Reload</b> or <b>end time</b> selected?</li> <li>– Washing machine door closed?</li> <li>– Childproof lock active? Deactivate → <i>page 5</i>.</li> </ul>   |
| Detergent solution is not drained.  | <ul style="list-style-type: none"> <li>–  <b>Rinse stop</b> (no final spin) selected? → <i>page 3, 4</i>.</li> <li>– Clean the detergent solution pump → <i>page 11</i>.</li> <li>– Clean the waste pipe and/or drainage hose.</li> </ul>  |
| Water not visible in the drum.  | <ul style="list-style-type: none"> <li>– Not a fault - water below the visible area.</li> </ul>  |
| Spin result not satisfactory.<br>Laundry wet/too damp.                        | <ul style="list-style-type: none"> <li>– Not a fault - the unbalanced load detection system has cancelled the spin cycle due to uneven distribution of the laundry. Distribute large and small items of laundry evenly in the drum.</li> <li>–  <b>Easy-Iron</b> selected? → <i>page 5</i>.</li> <li>– Speed selected too low? → <i>page 5</i>.</li> </ul> |
| Spin cycle performed several times.   | <ul style="list-style-type: none"> <li>– Not a fault - unbalanced load detection system is adjusting the imbalance.</li> </ul>   |
| Residual water in the  compartment for care products.                         | <ul style="list-style-type: none"> <li>– Not a fault - the action of the care product is not affected.</li> <li>– Clean the insert if necessary → <i>page 10</i>.</li> </ul>   |
| Odour formation in the washing machine.                                       | <ul style="list-style-type: none"> <li>– Run programme  <b>Cottons 90 °C</b> without laundry. Use standard detergent.</li> </ul>   |
| The  status indicator lights.<br>Appliance has detected a detergent overload. | <ul style="list-style-type: none"> <li>– Too much detergent used?<br/>Mix 1 tablespoon of fabric softener with ½ litre of water and pour into compartment <b>II</b> (<i>not with outdoor or down fabrics</i>).</li> <li>– Reduce the detergent dosage for the next wash cycle.</li> </ul>  |
| Loud noise generated, vibrations and “wandering” during the spin cycle.       | <ul style="list-style-type: none"> <li>– Are the appliance feet fixed?<br/>Secure the appliance feet → <i>Installation instructions</i>.</li> <li>– Transportation safety devices removed?<br/>Remove the transportation safety devices → <i>Installation instructions</i>.</li> </ul>   |
| Display panel/indicator lamps do not function during operation.               | <ul style="list-style-type: none"> <li>– Power cut?</li> <li>– Circuit breakers tripped or fuses blown? Reset the circuit breakers or change the fuses.</li> <li>– If the fault occurs repeatedly, call the after-sales service.</li> </ul>  |
| Programme sequence longer than usual.   | <ul style="list-style-type: none"> <li>– Not a fault - unbalanced load detection system adjusts imbalance by repeatedly distributing the laundry.</li> <li>– Not a fault - foam detection system active - several rinse cycles are added.</li> </ul>   |

## What to do if ...

|  |  |
|--|--|
| Detergent residues on the laundry.   | <ul style="list-style-type: none"> <li>– Occasionally, phosphate-free detergents contain water-insoluble residues.</li> <li>– <b>Select</b> <b>Rinse</b> or brush the laundry after washing.</li> </ul>                        |
| In Reload mode, <b>Start/Reload</b> flashes very quickly and a signal sounds.  | <ul style="list-style-type: none"> <li>– Water level too high. Not possible to add laundry. Close the washing machine door immediately if necessary.</li> <li>– To continue, press the  <b>Start/Reload</b> button.</li> </ul> |
| If you cannot correct a fault yourself (switching on/off) or a repair is required:   |  |
| <ul style="list-style-type: none"> <li>– Turn the programme selector to <b>Off</b> and remove the mains plug from the socket.</li> <li>– Turn off the water supply and call the after-sales service → <i>page 13</i>.</li> </ul> |  |

## Emergency release e.g. in the event of a power cut



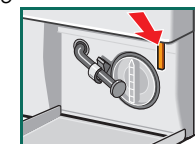
The programme continues when the power supply is restored. However, if the laundry has to be removed, the washing machine door can be opened as follows:



### Risk of scalding.

*The detergent solution and laundry may be hot. If possible, leave it to cool down.  
Do not reach into the drum if it is still rotating.  
Do not open the washing machine door if water can be seen through the glass.*

1. Turn the programme selector to **Off** and disconnect the mains plug.
2. Drain the detergent solution → *page 11*.
3. Pull the emergency release downwards with a tool and release. Washing machine door can then be opened.



## After-sales service

- If you cannot rectify the fault yourself (Troubleshooting → *page 12, 13*), please contact our after-sales service. We will always find a suitable solution and will avoid a visit from a service technician wherever possible.
- You can find the contact details for your nearest after-sales service here or in the after-sales service directory (depending on model).  
**You find the regional service contact of all countries in the enclosed service booklet.**
- Please give the after-sales service the product number (E no.) and the production number (FD) of the appliance.

E-Nr. \_\_\_\_\_ FD \_\_\_\_\_

Product number

Production number

*This information can be found:  
on the inside of the washing machine door\*/  
opened service flap\* and rear of the appliance.  
\*depending on the model*

**Rely on the professionalism of the manufacturer.** Please contact us.  
This will ensure that the repair is carried out by trained service technicians who arrive equipped with genuine spare parts for your appliance.



**Washing machine**



**BOSCH**

**en** Instruction manual