

XR SERIES RECESSED SUPPORT FOR CEILING INSTALLATION



03.MA007

User's manual rel 1.2 **GB**

D.T.S. Illuminazione srl - ITALY
<http://www.dts-lighting.it>

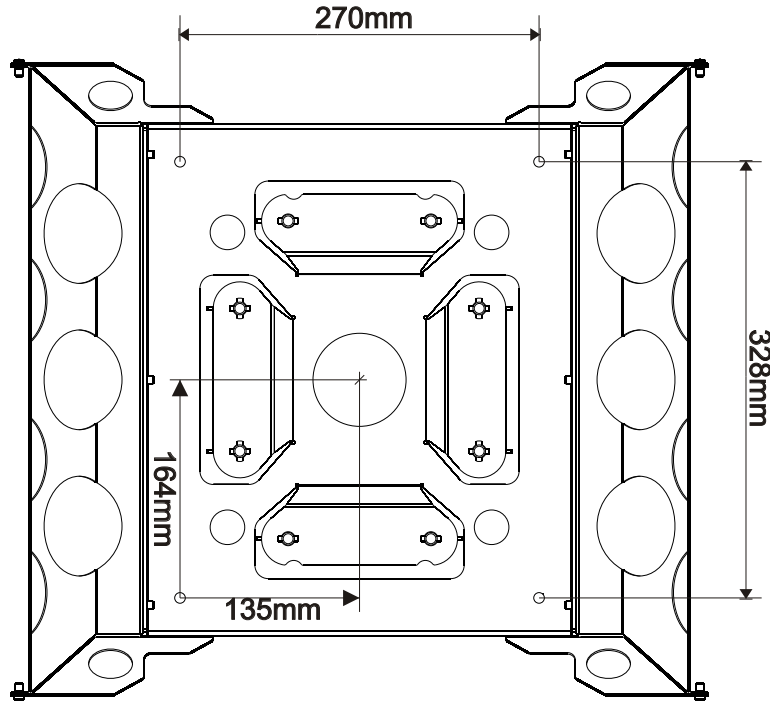


The Lighting Company

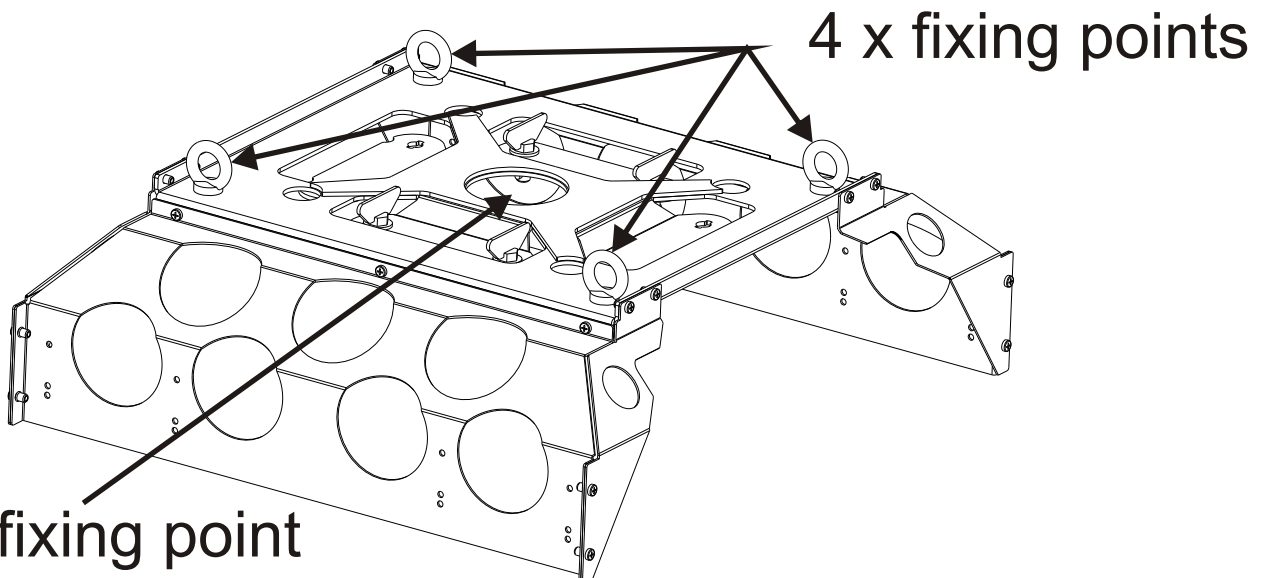
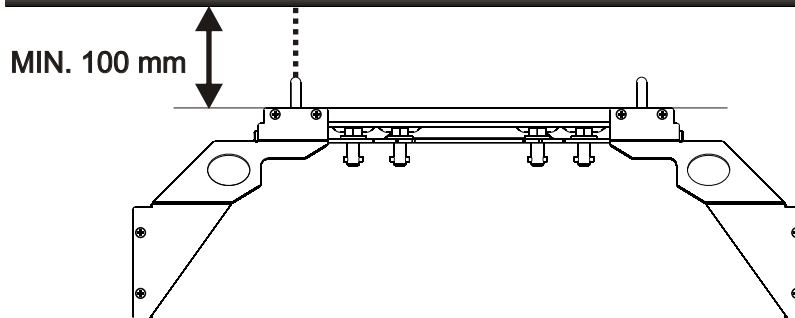
Made in Italy

INSTALLING THE SUPPORT

- The projector should always be installed with bolts, clamps and other tools that are capable of supporting the weight of the unit.
- Always use a second safety cable to sustain the weight of the unit in case of the failure of the main fixing points.
- Never install the fixture in an enclosed area lacking sufficient air flow. The ambient temperature should not exceed 40°C.



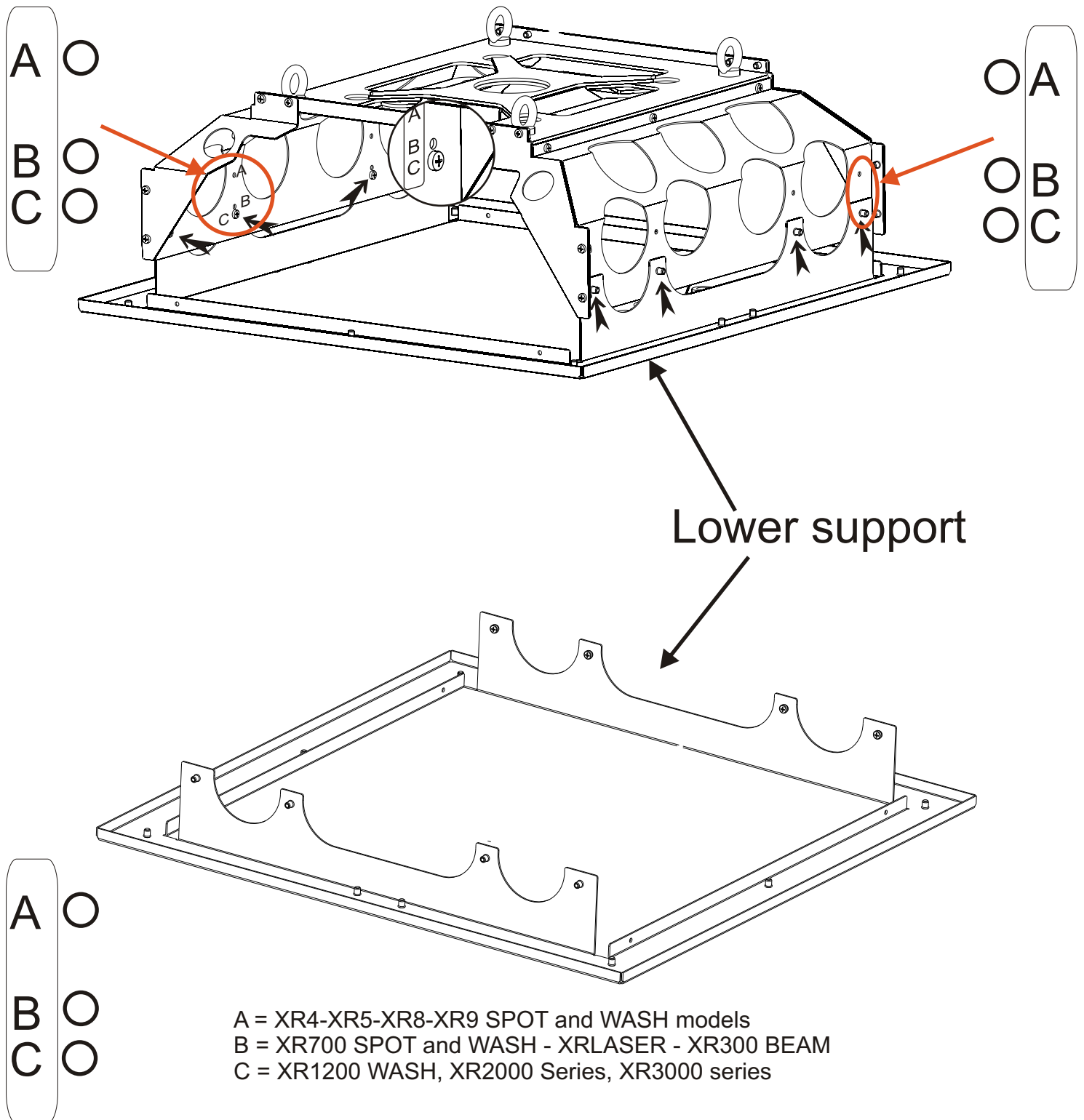
CEILING



XR SERIES RECESSED SUPPORT

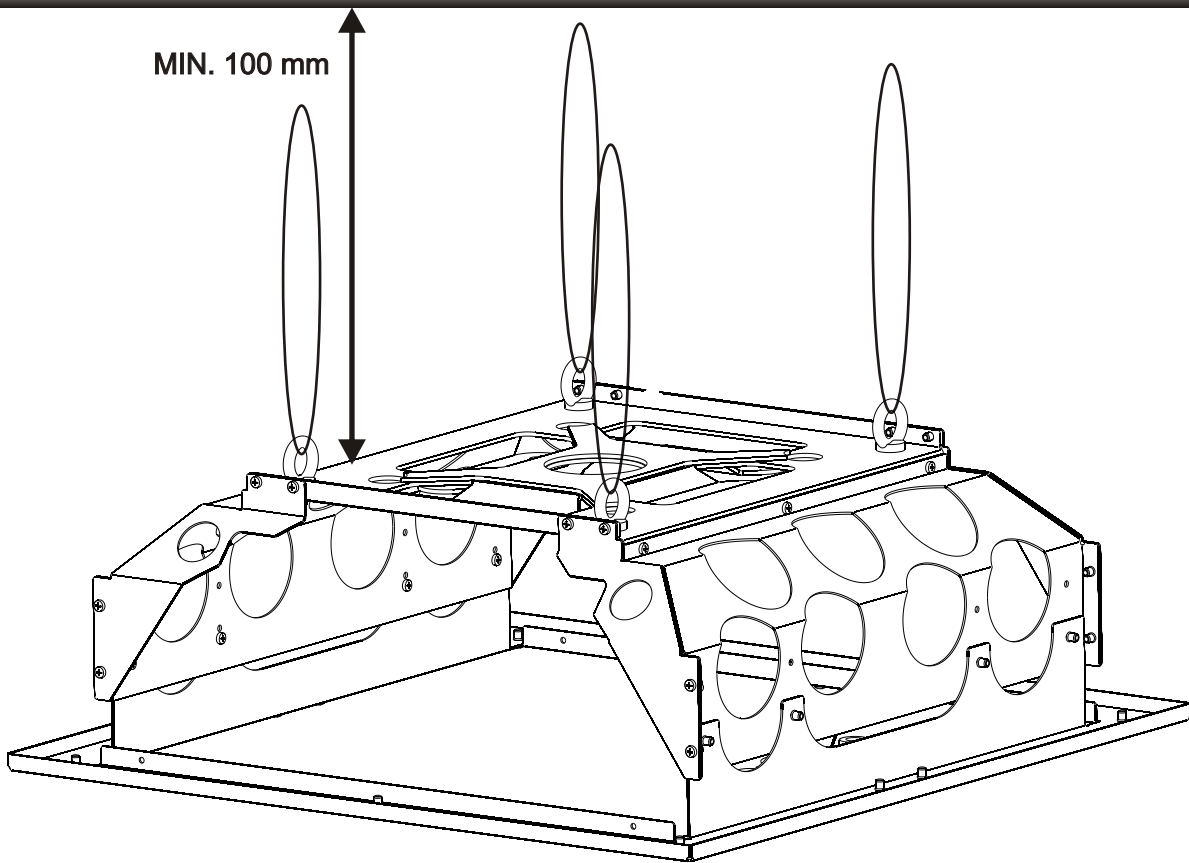
The lower support of the recessed assembly should be placed on the right A, B, or C points according with the moving head model you wish to install

- A = XR4-XR5-XR8-XR9 SPOT and WASH models
- B = XR700 SPOT and WASH - XRLASER - XR300 BEAM
- C = XR1200 WASH, XR2000 Series, XR3000 series



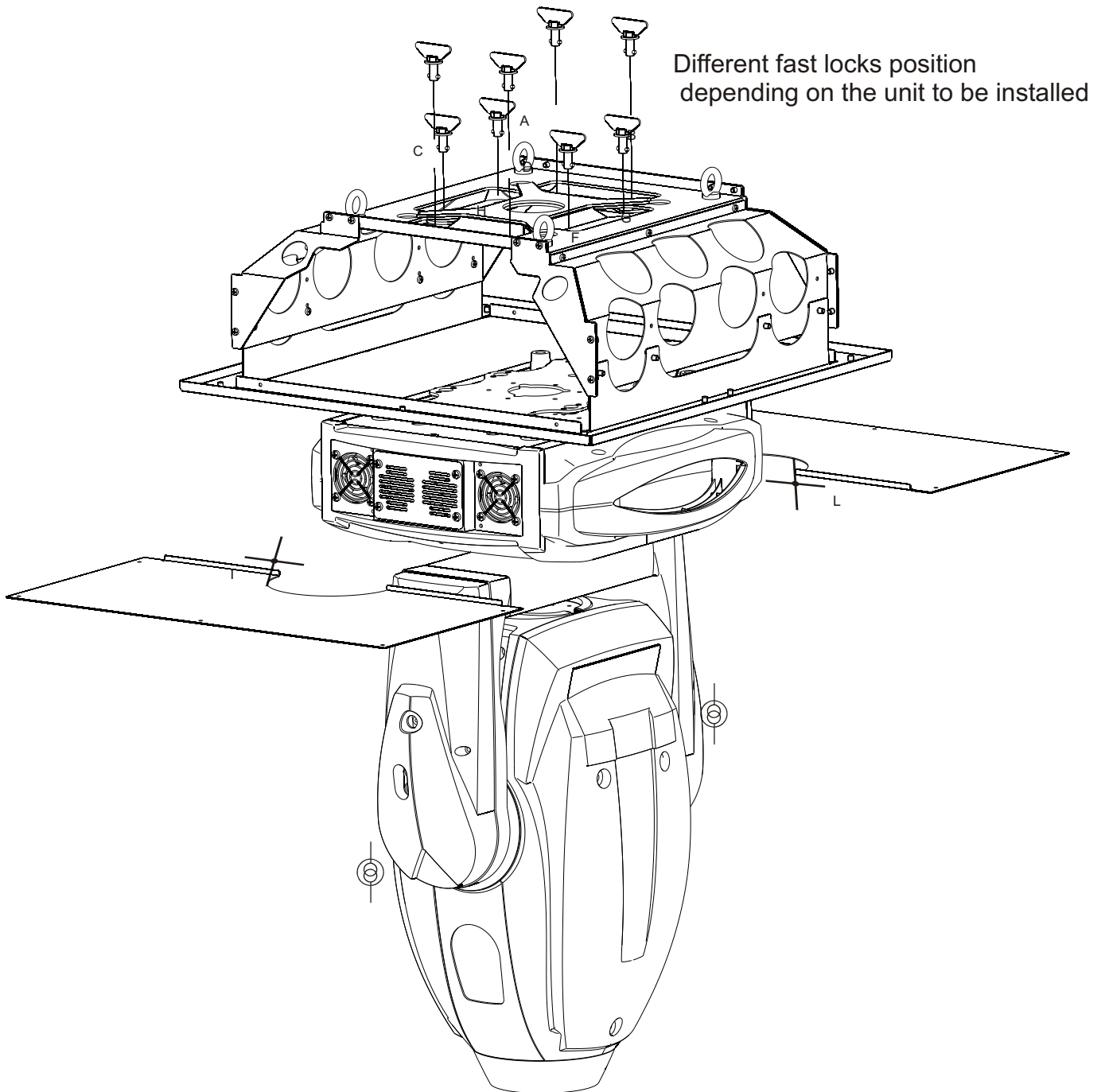
Complete assembly to be fixed on the ceiling

CEILING



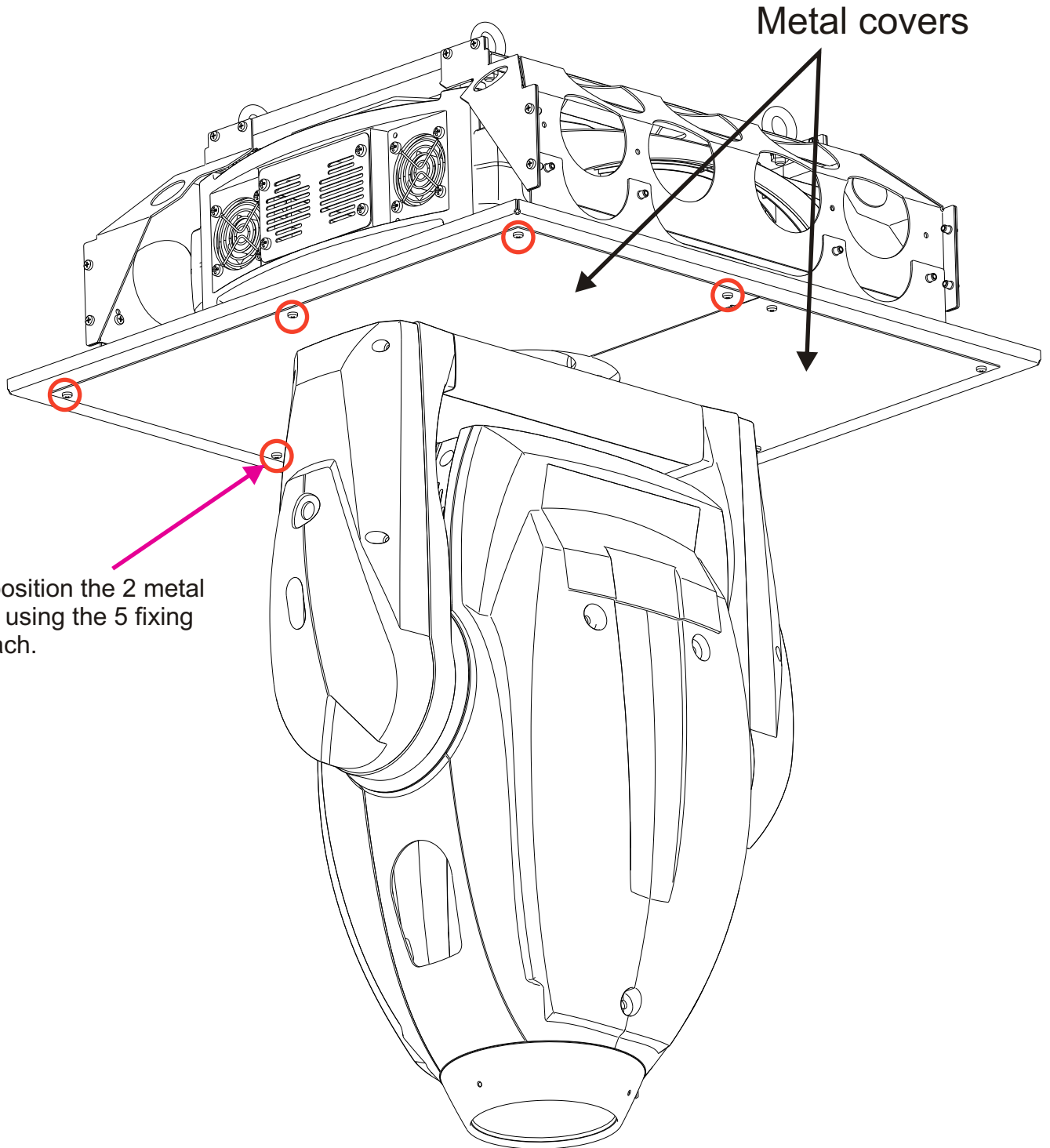
XR SERIES RECESSED SUPPORT

Now it will be possible to fix the unit to the ceiling assembly system by using the 4 fast locks provided in the box



XR SERIES RECESSED SUPPORT

Place in position the 2 metal covers by using the 5 fixing screws each.



Place in position the 2 metal covers by using the 5 fixing screws each.

NOTE

The information contained in this publication has been carefully prepared and checked. However, no responsibility will be taken for any errors. All rights are reserved and this document cannot be copied, photocopied or reproduced, in part or completely, without prior written consent from D.T.S.

D.T.S. reserves the right to make any aesthetic, functional or design modifications to any of its products without prior notice. D.T.S. assumes no responsibility for the use or application of the products or circuits described herein.

MADE IN ITALY



The Lighting Company

ISO 9001:2000

D.T.S. quality system
is certified to the
ISO 9001:2000 standard



D.T.S. products are designed
and manufactured at the D.T.S.
plants in Italy



05171073