

SignApps Express 2.2

User Manual

Contents

- 1 Overview.....4
- 2 Installation ..... 5
  - 2.1 Minimum system requirements ..... 5
  - 2.2 Setup process ..... 5
- 3 UI Overview ..... 6
  - 3.1 Main Menu ..... 6
  - 3.2 Template List ..... 6
  - 3.3 Presentation Editor ..... 7
  - 3.4 Schedule Editor..... 8
  - 3.5 Event Editor..... 8
- 4 Basic Operations .....10
  - 4.1 User Operation Flow..... 10
  - 4.2 Edit Playlist ..... 10
    - 4.2.1 Create playlist ..... 11
    - 4.2.2 Edit from exsiting playlist ..... 11
    - 4.2.3 Duplicate exsiting playlist..... 12
  - 4.3 Edit Presentation ..... 13
    - 4.3.1 Add looping playback media items ..... 13
    - 4.3.2 Media item configuration..... 13
    - 4.3.3 Edit image ..... 14

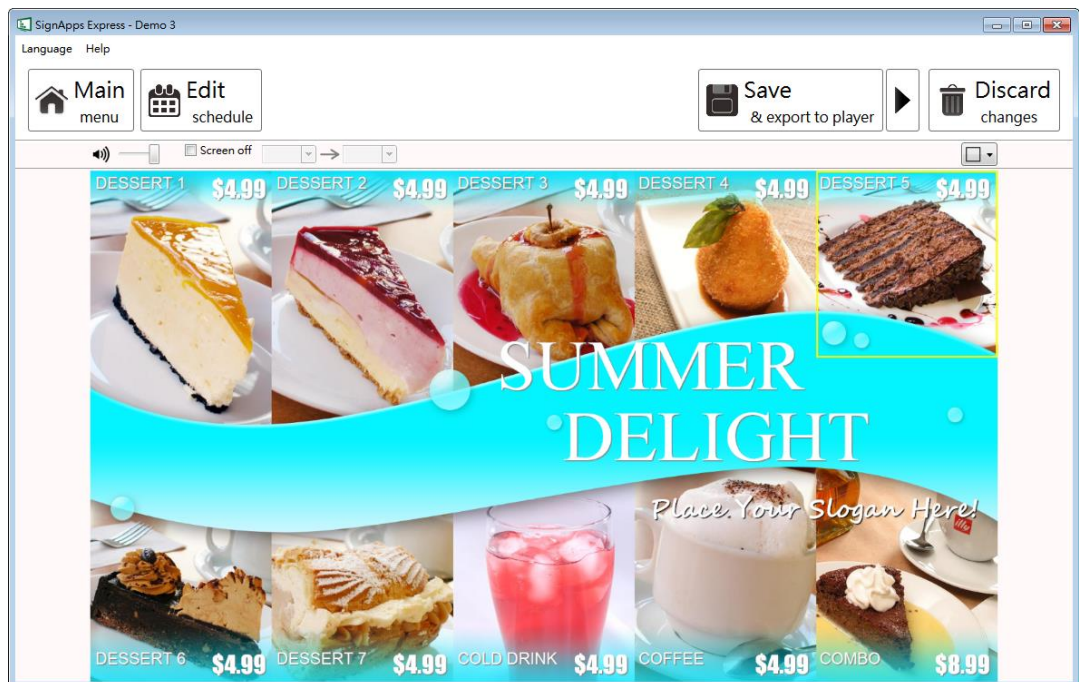
4.3.4	Edit video.....	15
4.3.5	Edit PowerPoint file .....	16
4.3.6	Edit Logo .....	17
4.3.7	Edit Widget.....	18
4.3.8	Adding Ticker .....	19
4.3.9	Edit text.....	21
4.3.10	Switch theme and Toggle logo display.....	22
4.3.11	Switch between presentations .....	23
4.4	Edit Schedule .....	23
4.4.1	Add an event schedule .....	24
4.4.2	Edit recurrence type .....	25
4.4.3	Schedule priority .....	25
4.4.4	Add presentations to an event.....	26
4.4.5	Duplicate a presentations to an event .....	27
4.4.6	Duplicate an event.....	28
4.5	Export Playlist.....	28
4.5.1	Export playlist via USB .....	28
4.5.2	Export playlist via Network .....	29
4.5.3	Player association .....	30
4.6	Firmware Update.....	31

## 1 Overview

Boost up your sales with digital signage is no longer a complicated task. SignApps Express is world's easiest digital signage utility that can let you put right message to the right place immediately.

The utility features with pre-designed professional templates, auto digital signage devices discovery and intuitive WYSWYG (what you see is you what you get) user interface that anyone can learn and use it in no time. Simply choose a template, select your media contents, and then push to your players on network.

Digital signage made easy with SignApps Express.



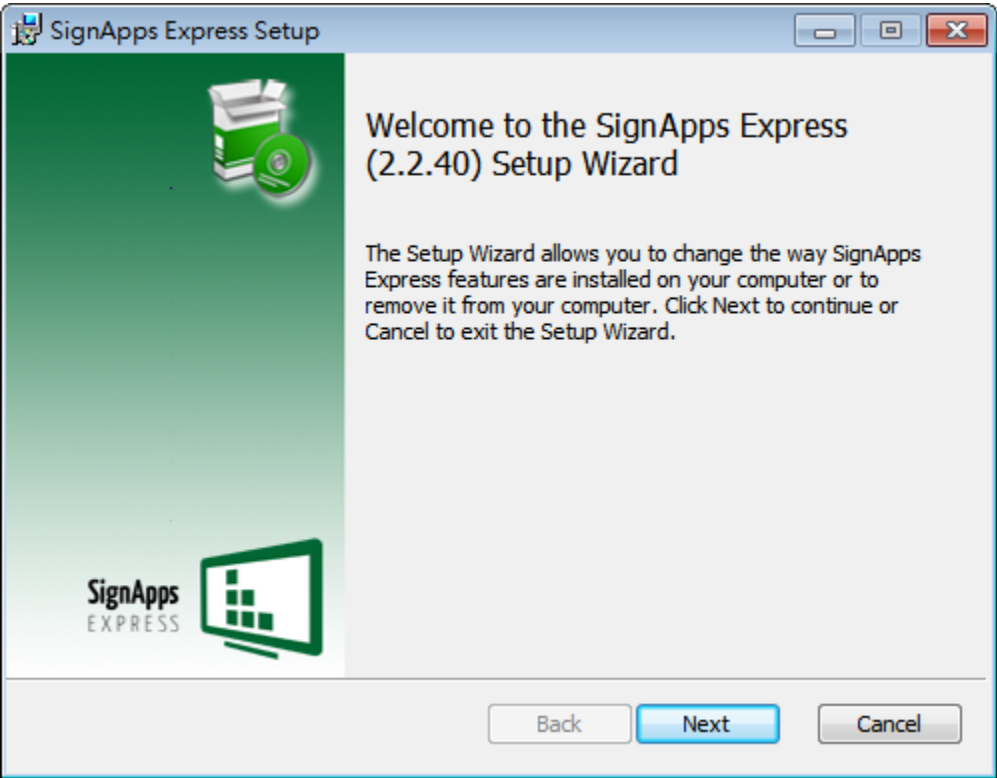
## 2 Installation

### 2.1 Minimum system requirements

Windows XP, Vista, 7 or 8 Operating System	1.0 GHz AMD or Intel CPU
.NET Framework 4	1GB of system memory
(optional)Microsoft PowerPoint 2003/2007/2010/2013	20 GB hard drive space

### 2.2 Setup process

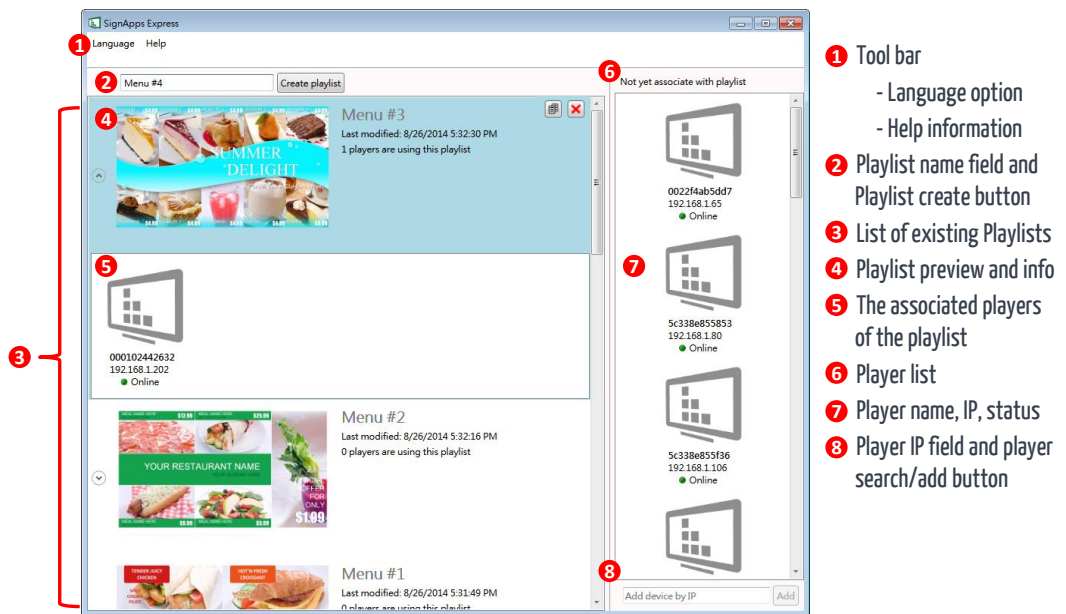
Run the installer and follow the step by step instructions. Close the installer to finish installation.



## 3 UI Overview

### 3.1 Main Menu

The main menu is composed of a list of existing playlists and a list of players available for playlist assignment.



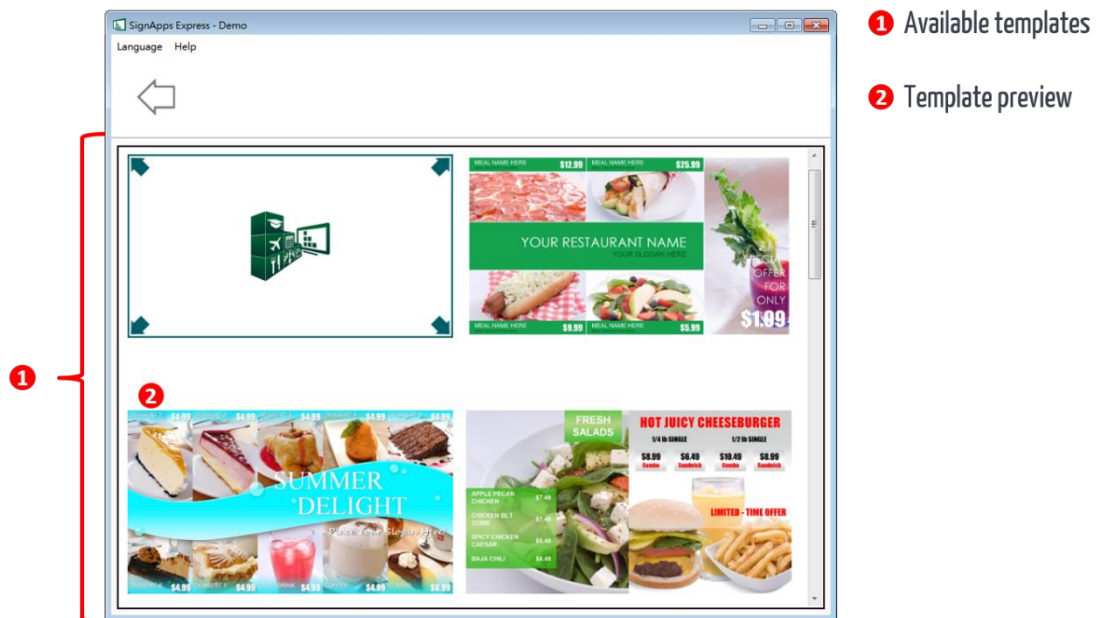
You can drag players into/out of a playlist to make it associated/unassociated with the playlist. Double click a playlist to edit it.

When mouse over a playlist, an "X" button will show up. Click the "X" to delete playlist.

Maximum 50 players can be associated with a playlist.

### 3.2 Template List

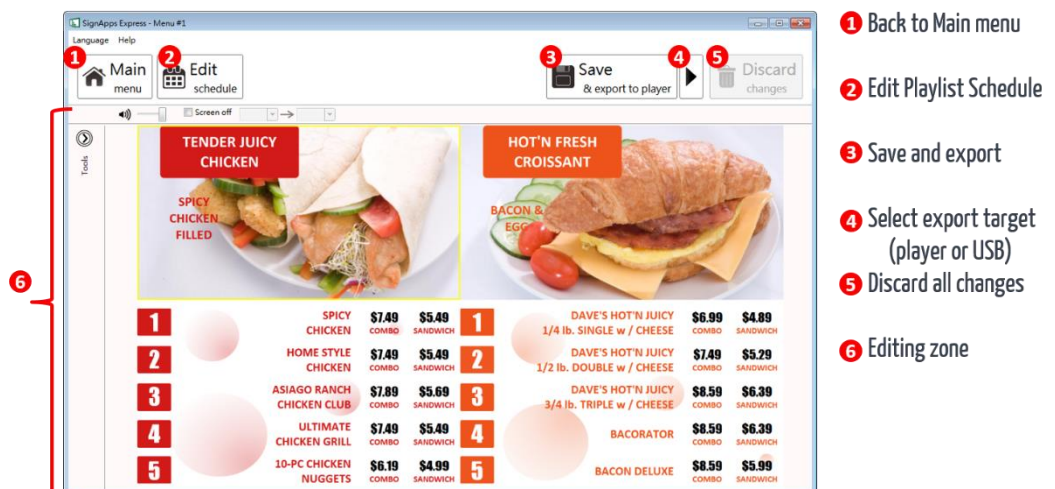
Template list contains all the presentation templates



### 3.3 Presentation Editor

Presentation editor allows you to edit all the media content: text, image, video and widget in a presentation.

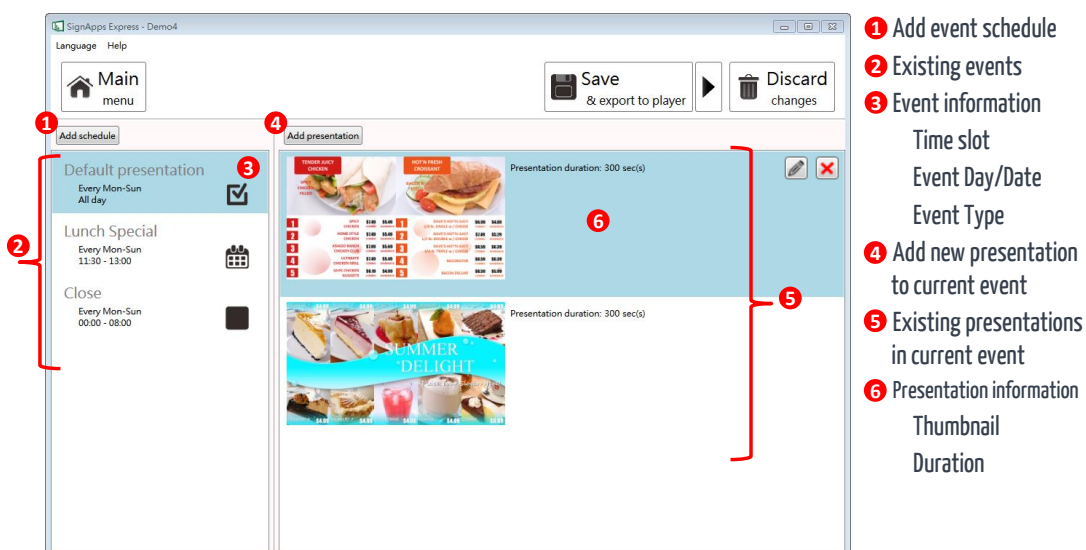
It also allows you to save the playlist, export the playlist to players/USB, or enter schedule editor if you need to schedule the playback.





## 3.4 Schedule Editor

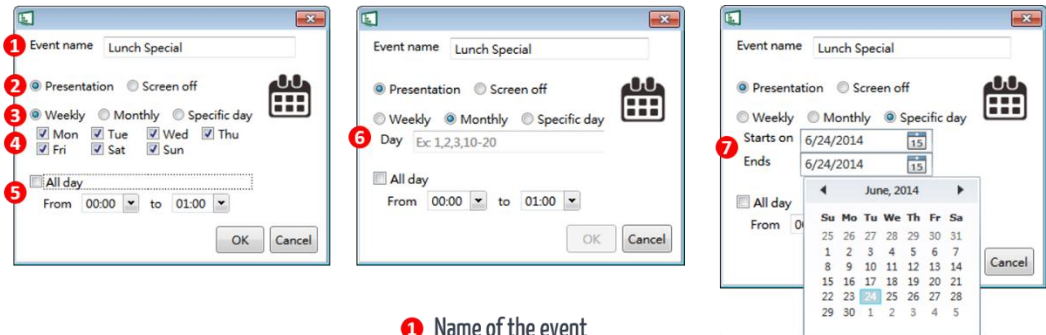
Schedule Editor helps you create flexible playlist containing multiple presentations which will play automatically according to pre-defined events (time slots). User can add up to 50 event schedules and up to 50 presentations in presentation loop.



## 3.5 Event Editor



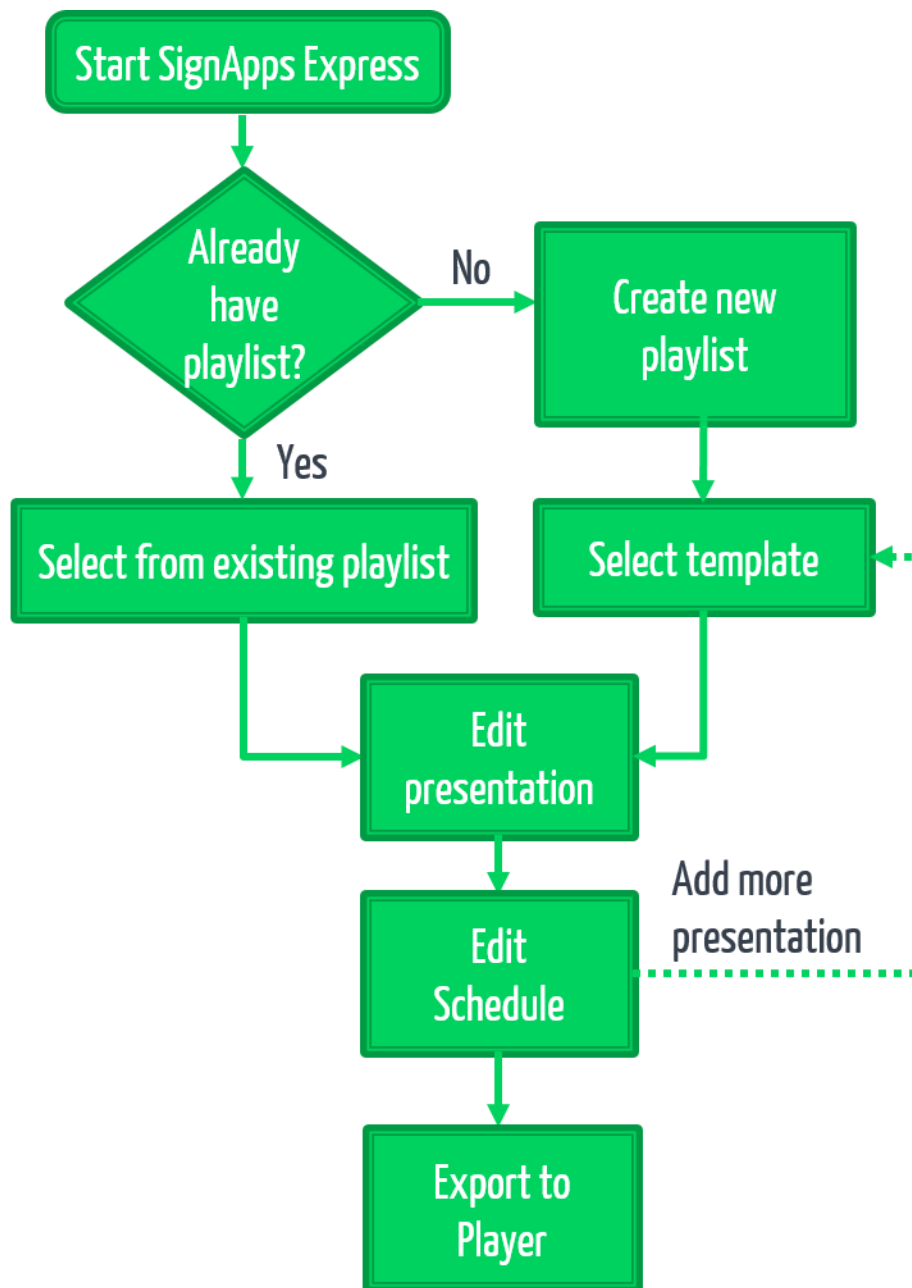
Event Editor lets you define how and when you want the event to take place.



- ① Name of the event
- ② Event type (available when add new event)
- ③ Recurrence type
- ④ Day picker for weekly event
- ⑤ Time slot
- ⑥ Day picker for monthly event
- ⑦ Day picker for specific day event

## 4 Basic Operations

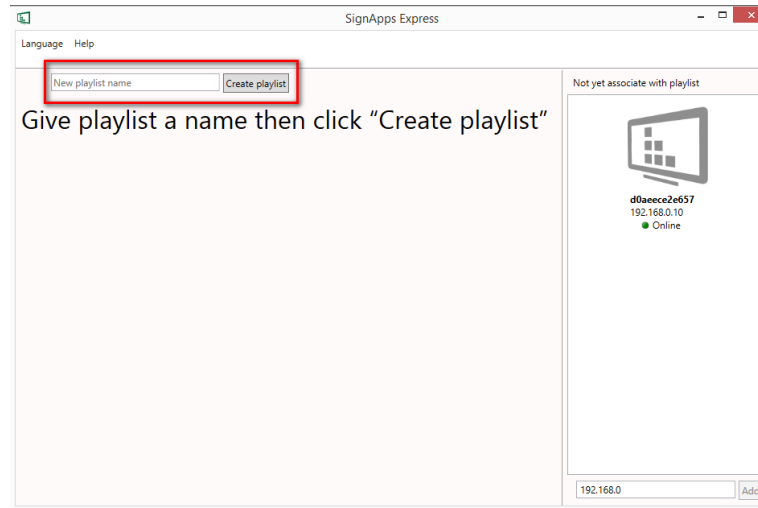
### 4.1 User Operation Flow



### 4.2 Edit Playlist

#### 4.2.1 Create playlist

- 1 Input a playlist name(optional) and then click "Create playlist"

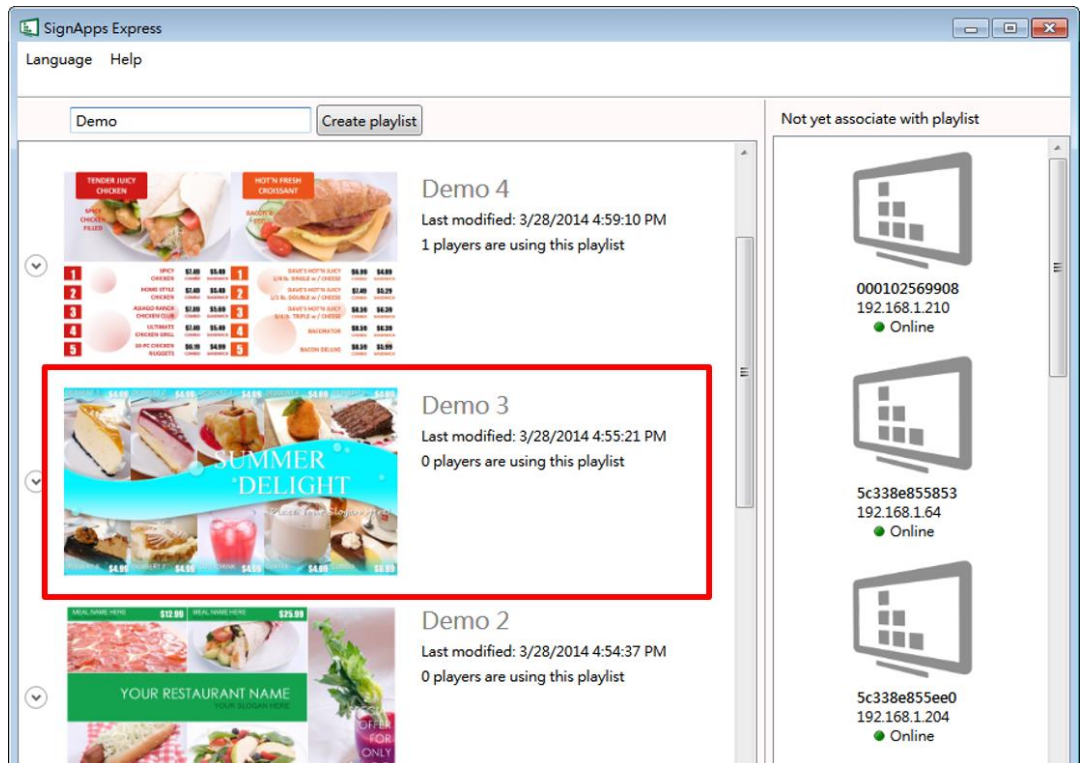


- 2 Double click a template to make your selection



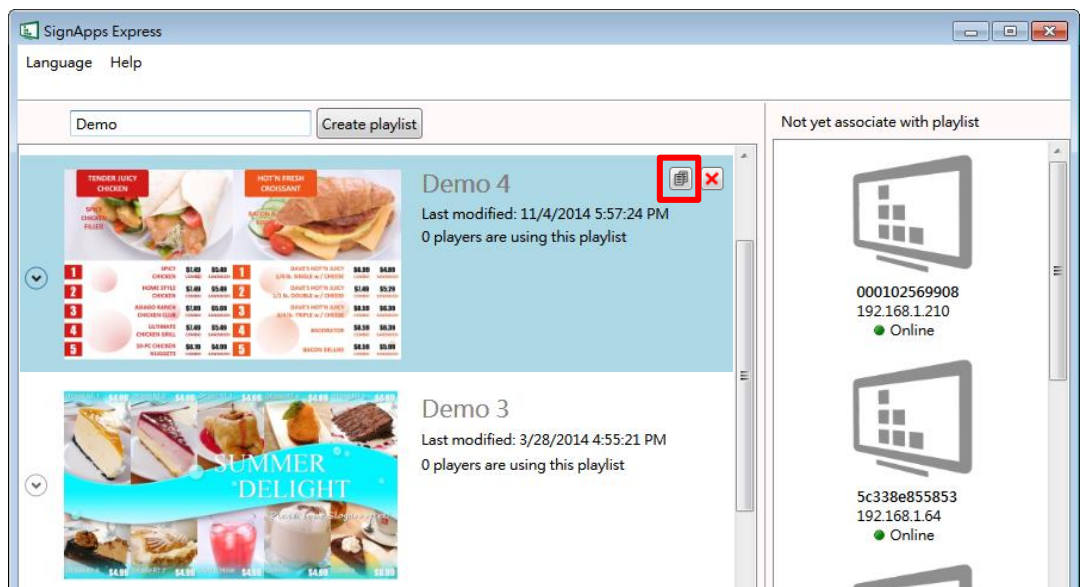
#### 4.2.2 Edit from exsiting playlist

Double click on an exsiting playlist to edit



#### 4.2.3 Duplicate existing playlist

Click on Duplicate button of an existing playlist to copy the playlist



## 4.3 Edit Presentation


### 4.3.1 Add looping playback media items


- 1 Select a region then expanding the Looping playback option panel



- 2 Add new image/video/powerpoint/widget and edit their options

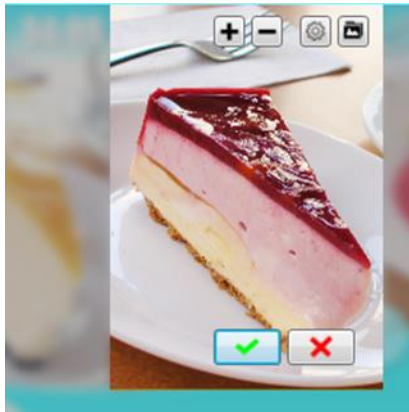


Click  to add widget

Click  to add image, video and PowerPoint files.

### 4.3.2 Media item configuration

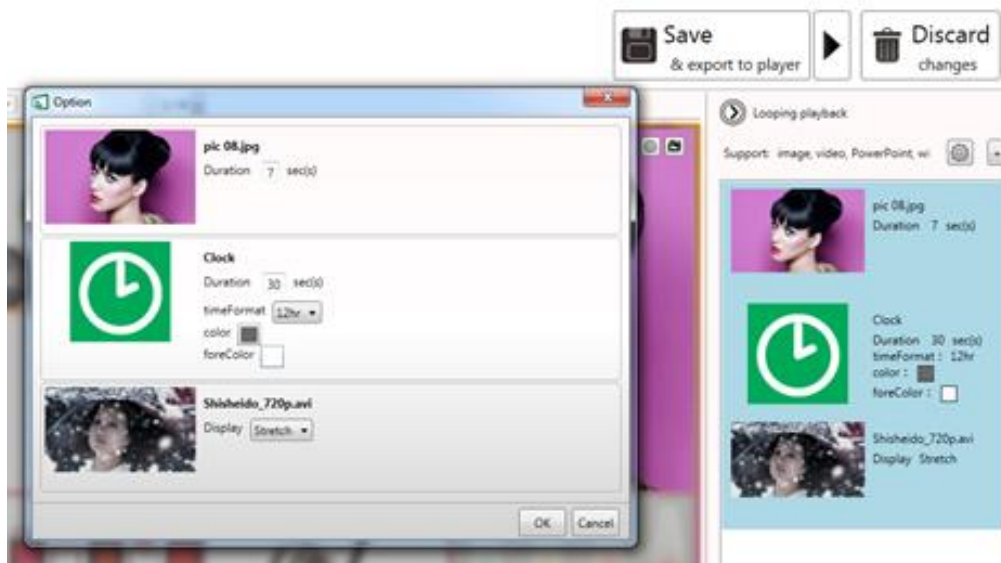
- 1 Focus/Zoom (image only) and Fit option can be configured from editing zone directly



- 2 Playback duration and other options can be configured from Option dialog, to launch the Option dialog:
  - double click on media item
  - click right mouse button and select "Option.."

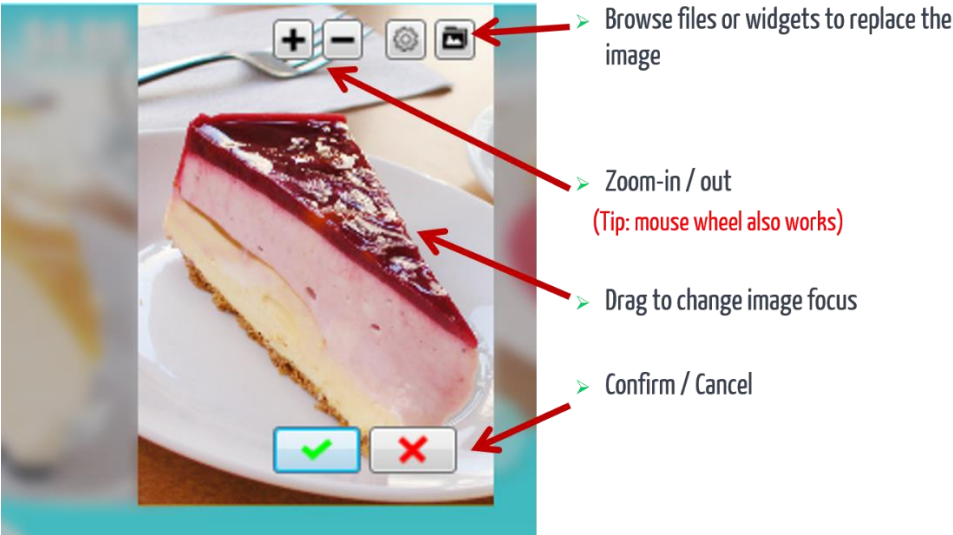
*Note:*

*To select multiple items, click the first item, press and hold down the Ctrl key, and then click the next item*



#### 4.3.3 Edit image

- 1 Add image file to a region and click on the item in the looping playback media list to start editing.
- 2 You can replace the image, zoom-in/out and adjust the focus. Click confirm when you are done.



Configurable options	Options
Duaction	Playback duration (seconds)

4.3.4 Edit video

*Note:*

*Double click the video to preview the playback in Windows application*

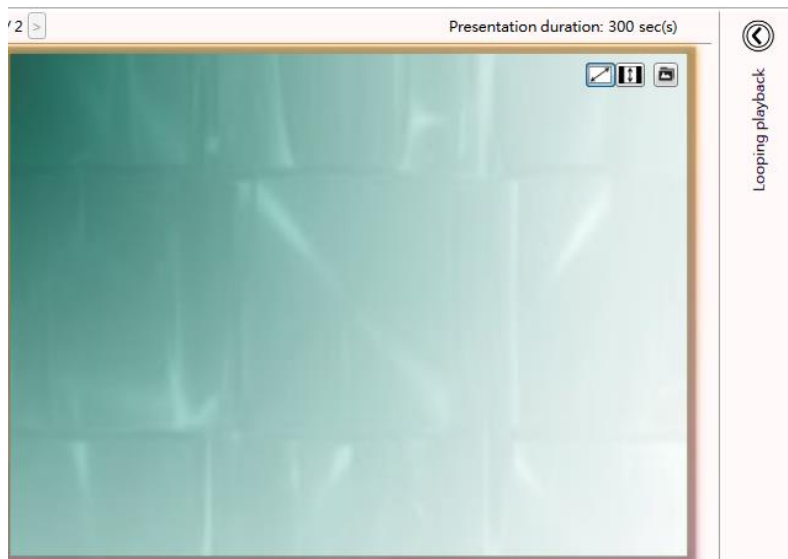
- 1 Add video files to a region and click on the item to start editing
- 2 Choose to fit inside the region or stretch video to the region





*Note:*

*Only ONE zone is allowed to contain video files in a presentation*



Configurable options	Options
Display	Fit/Stretch

4.3.5 Edit PowerPoint file

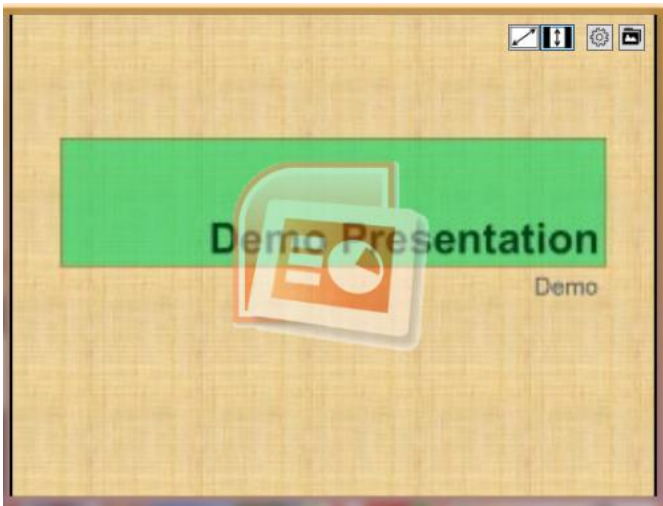


*Note:*

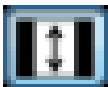
*Export PowerPoint slides (in static only) if you have PowerPoint 2003/2007/2010/2013 installed in same computer*

*Double click the file to edit in PowerPoint*

- 1 Add powerpoint file to a region and click on the item to start editing



- 2 Choose to fit inside the region or stretch PowerPoint to the region



: Fit inside



: Stretch

Configurable options	Options
Display	Fit/Stretch
Unspecified slide duration	Playback duration for each slide(seconds)

*Note:*

*LOGO zone do not support looping playback*

4.3.6 Edit Logo

- 1 Click on LOGO icon to edit LOGO (LOGO only supported in limited Templates)



- 2 You can replace the image, zoom-in/out and adjust the focus. Click confirm when you are done.

Configurable options	Options
N/A	

4.3.7 Edit Widget

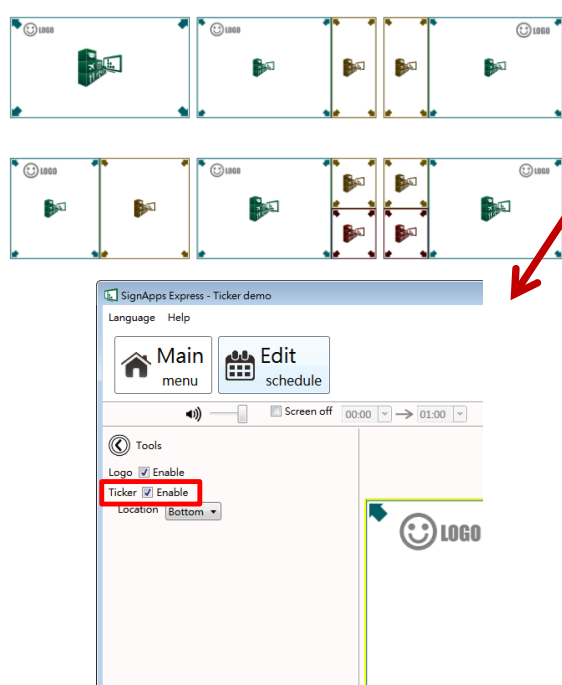
- 1 Add widget files to a region and click on the item to start editing



Configurable options	Options

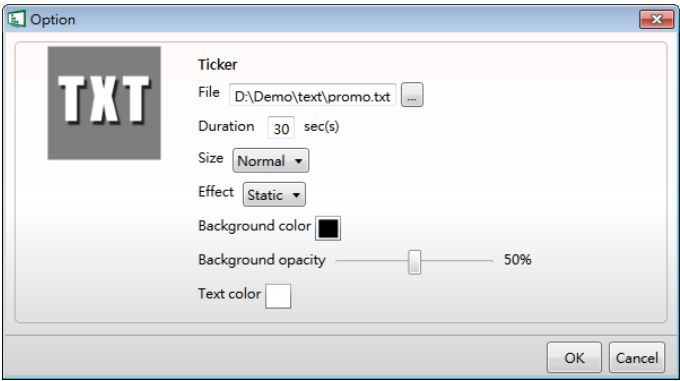
Common Options	Playback duration : seconds Color: background color foreColor: text color
Clock	timeFormat : 12h/24h
Calendar	timeFormat : 12h/24h Align: right/center/left
Weather	Cities: type city name listed in - <a href="http://www.worldweatheronline.com/country.aspx">http://www.worldweatheronline.com/country.aspx</a>
RSS	Urls: RSS URL Writing direction:Right to Left/Left to Right
Webpage	URL: website URL

#### 4.3.8 Adding Ticker



The screenshot shows the SignApps Express interface. At the top, there are two rows of ticker templates. Below them, the 'Tools' panel is visible, with 'Logo' and 'Ticker' both checked under the 'Enable' section. The 'Location' dropdown is set to 'Bottom'. A red box highlights the 'Ticker' checkbox. To the right, a 'Select ticker mode' dialog box is shown with 'Personal text' selected.

- Choose one of the empty templates to use ticker
- In the Tools panel, check Ticker to enable it
- Select a preferred ticker mode from one of the options:
  - Personal text:  
to display text content from a .txt file
  - Widget:  
to display a widget in the ticker zone (ex. RSS widget or custom widgets)

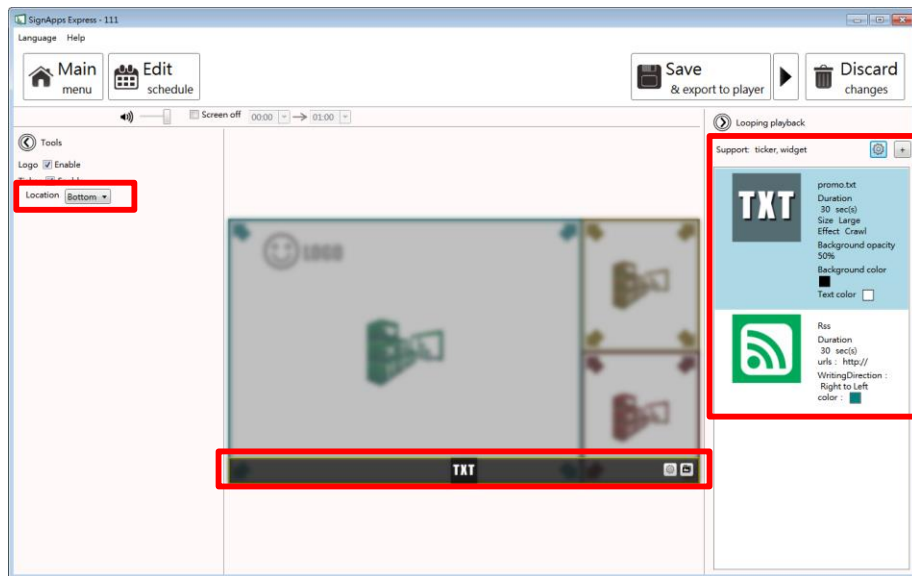


Configurable options	Options
File	Path to the .txt file
Duration	Playback duration in seconds
Size	The text size of the ticker Available options: small/normal/large
Effect	Transition effect of the ticker Available options: Static: no transition effect between lines Crawl: ticker crawls from right to left Scroll: ticker scrolls up
Background color	Select ticker zone background color from color palette
Background opacity	Level of transparency of the ticker background
Text color	Select text color from color palette

After enabling the ticker, you can:

- 1 Change the location of the ticker to Bottom or Top

## 2 Adding more .txt file or widgets to the zone

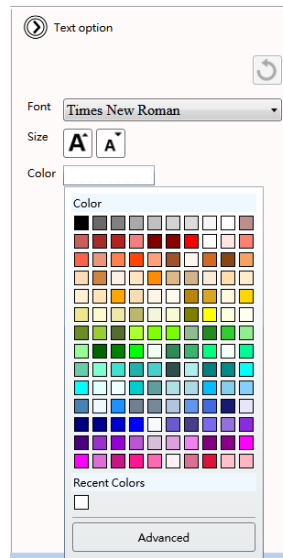


### 4.3.9 Edit text

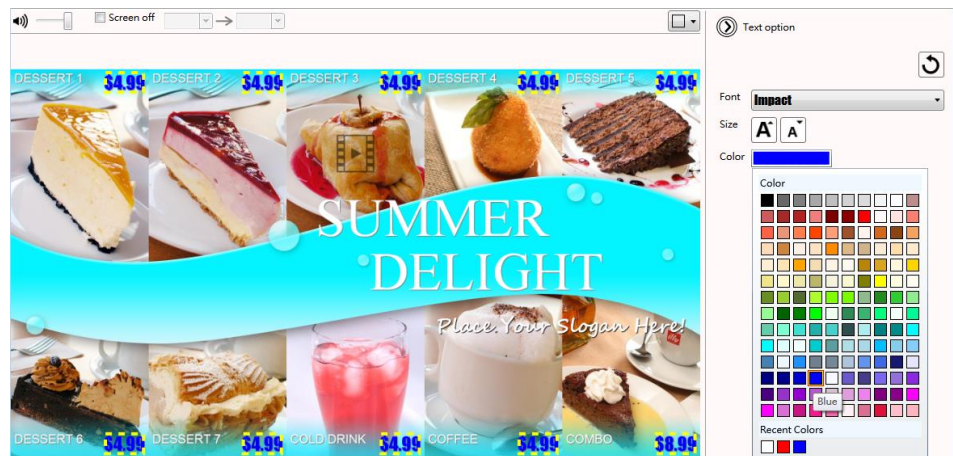
- 1 Editable text will get highlighted with yellow box when hovering on it. Click the text to start editing.



- 2 Expand option to change font type, size and color.

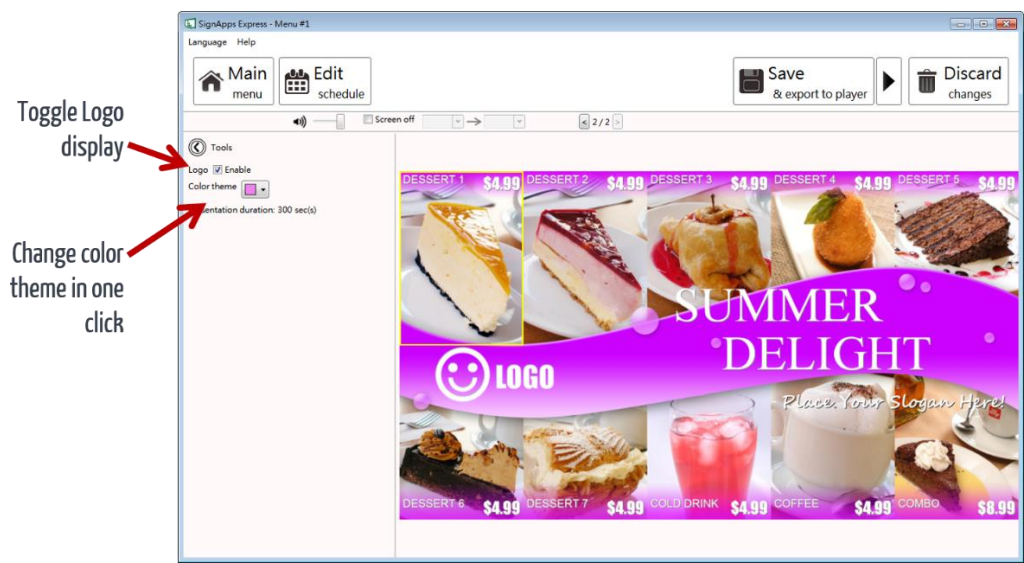


- 3 If the text belongs to a text group, changing its style would affect on all text in the same group.



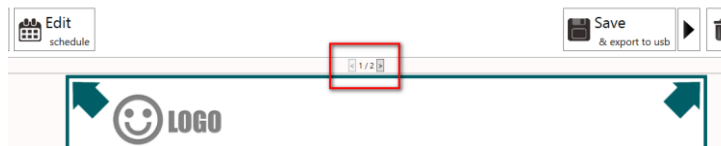
#### 4.3.10 Switch theme and Toggle logo display

Expand Tools panel to toggle logo display and choose a different color theme



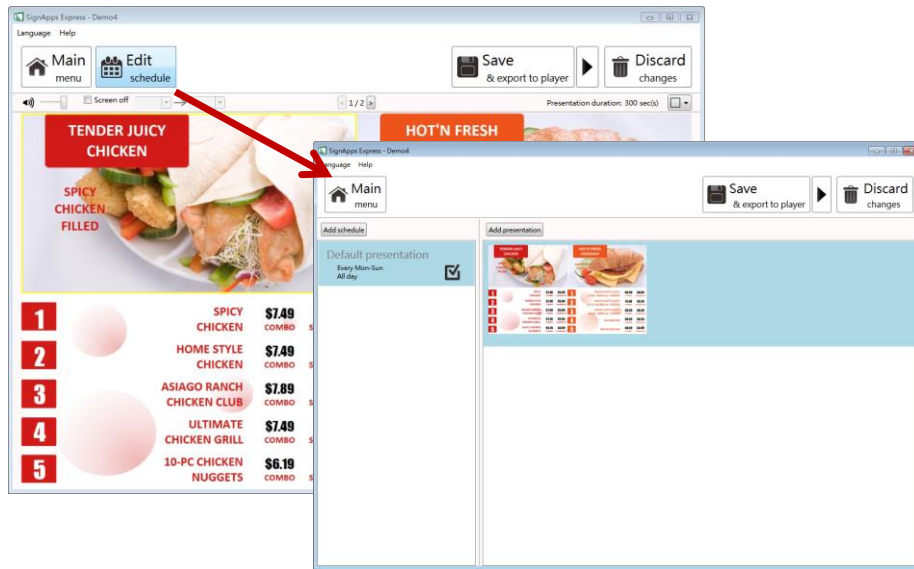
#### 4.3.11 Switch between presentations

If more than one presentations exist in same event schedule, switching between presentations can be done by the switch as shown below.



## 4.4 Edit Schedule

Click Edit schedule to enter schedule editor.



#### 4.4.1 Add an event schedule

- 1 Click Add event schedule
- 2 Edit the event schedule
- 3 Select template
- 4 Edit the newly added presentation

- 1 Specify event name
- 2 Choose an event type
  - Presentation
  - Screen off
- 3 Select recurrence type and the day
- 4 Select the playing period
  - All day
  - Specific time slot



#### 4.4.2 Edit recurrence type

Specific days(s) event has the highest priority, Monthly the 2nd and Weekly the lowest when schedules are overlapping.

Three screenshots of the recurrence type selection interface:

- Weekly:** Radio button selected. Checkboxes for Mon, Tue, Wed, Thu, Fri, Sat, Sun are all checked.
- Monthly:** Radio button selected. Text field labeled "Day" contains "Ex: 1,2,3,10-20".
- Specific day:** Radio button selected. "Starts from" and "Ends at" date pickers both show 6/18/2014. Below is a calendar for June 2014 with the 18th highlighted.

##### ➤ Weekly

- Check/uncheck the weekdays

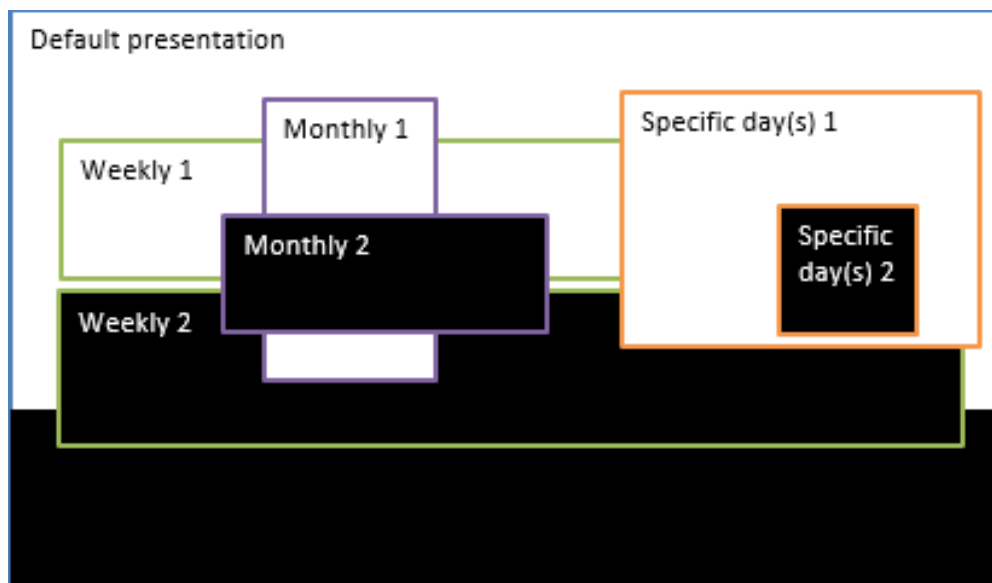
##### ➤ Monthly

- Enter days separated by comma ,
- Or period connected by dash -
- Ex: 1,5,9,15-18 will play on 1<sup>st</sup>, 5<sup>th</sup>, 9<sup>th</sup>, 15<sup>th</sup>, 16<sup>th</sup>, 17<sup>th</sup>, 18<sup>th</sup> of each month

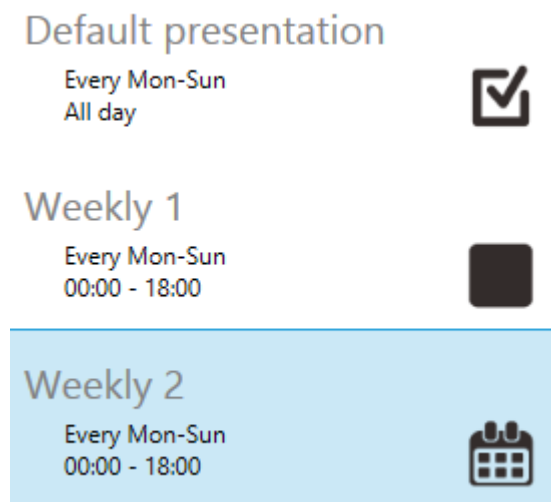
##### ➤ Specific day

- Pick start day and end day from the calendars

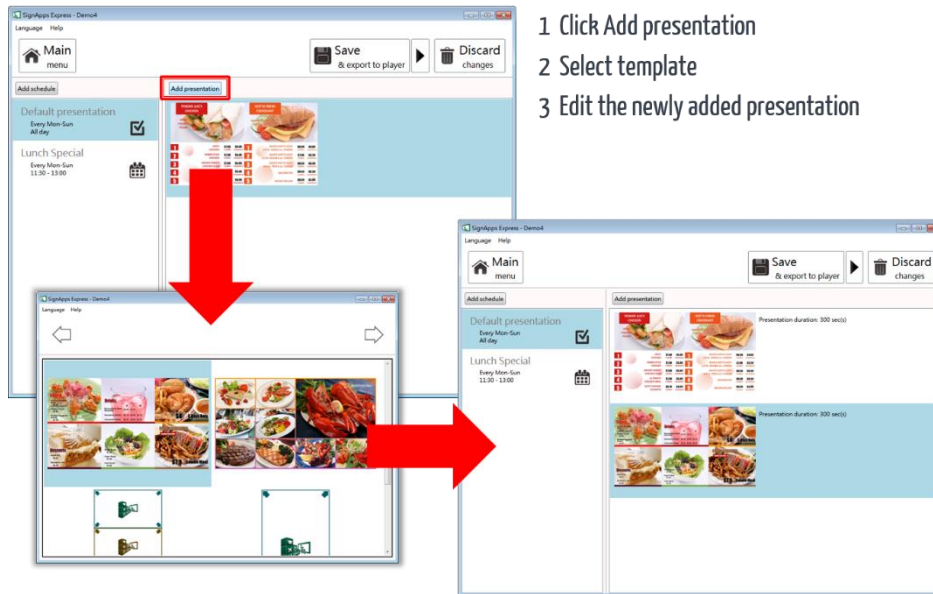
#### 4.4.3 Schedule priority



- Default presentation is the initial schedule which is defaulted to play 24/7. It has lowest priority, will be surpassed whenever there are overlapping with other schedule.
- As shown on diagram above, specific day(s) event has the highest priority of playback when schedules are overlapping, Monthly schedule has 2nd highest priority then its weekly schedule.
- Among same recurrence type, newly added schedule takes higher priority ( e.g. Weekly 2 is the newly added schedule )

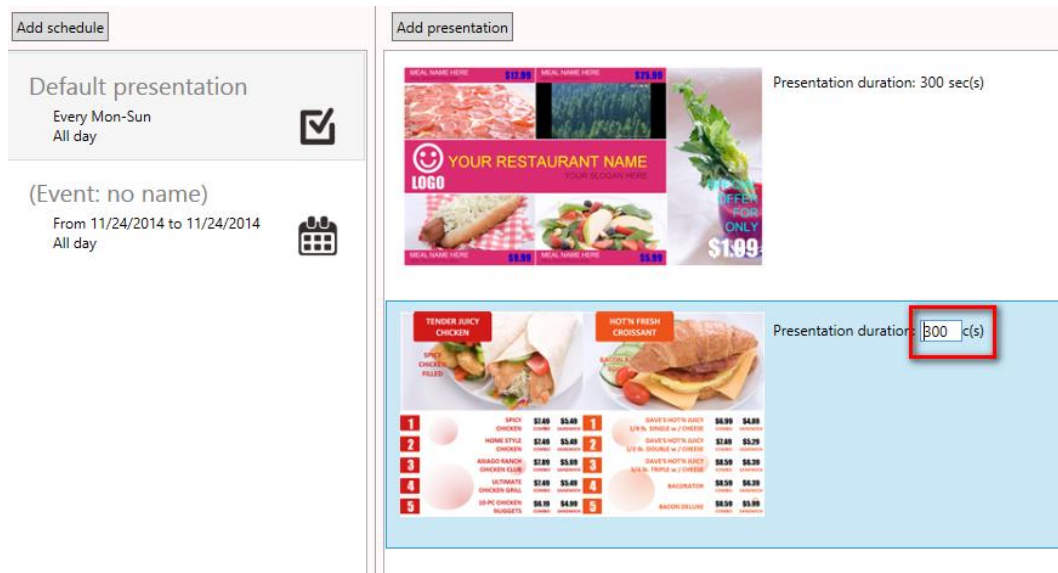


#### 4.4.4 Add presentations to an event

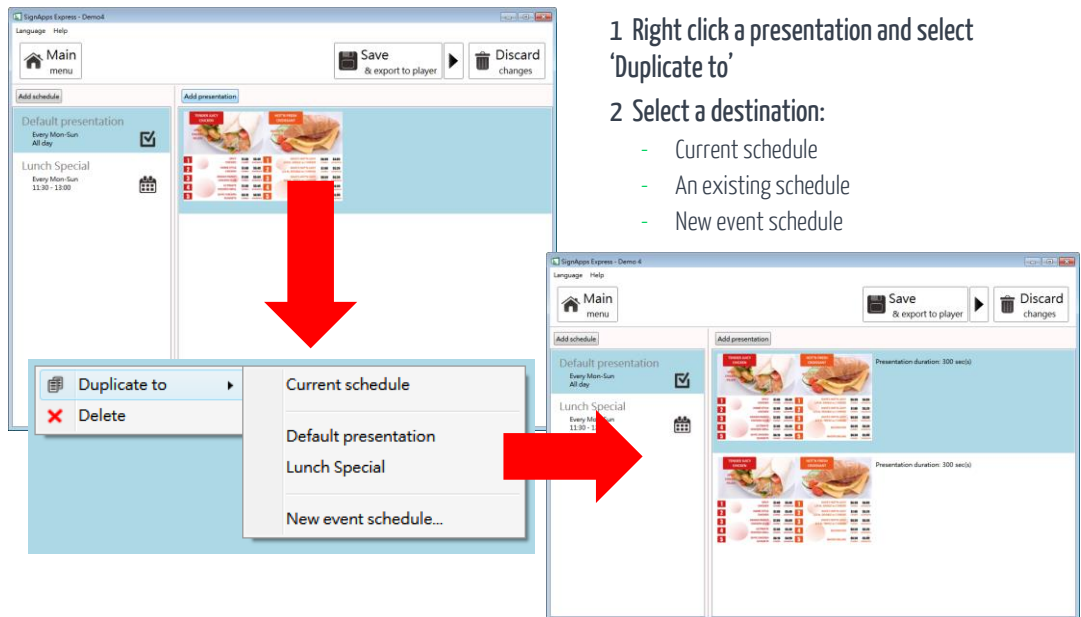


- 1 Click Add presentation
- 2 Select template
- 3 Edit the newly added presentation

When looping presentation has more than 1 presentation, duration box will appear. Click on Presentation duration number(300) to change duration, default duration is 300 seconds.



#### 4.4.5 Duplicate a presentations to an event

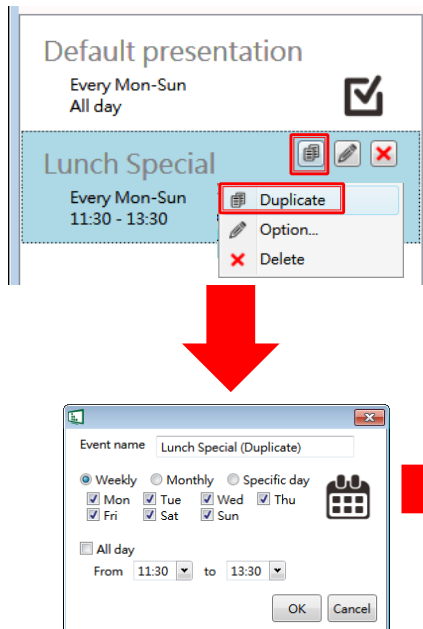


1 Right click a presentation and select 'Duplicate to'

2 Select a destination:

- Current schedule
- An existing schedule
- New event schedule

#### 4.4.6 Duplicate an event

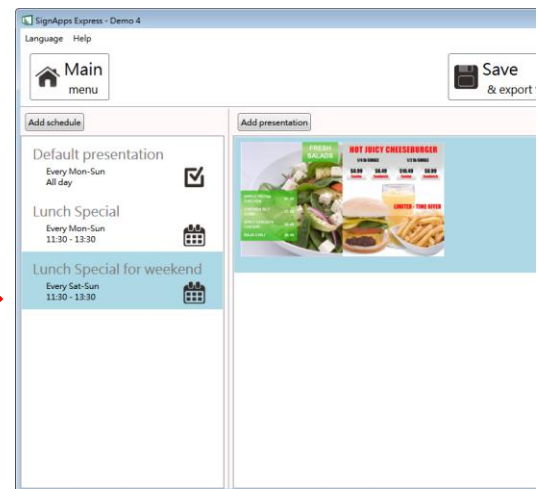


1 Right click a schedule and select 'Duplicate'

OR click duplicate button of a schedule

2 Edit schedule of new event

3 Click OK to save new event



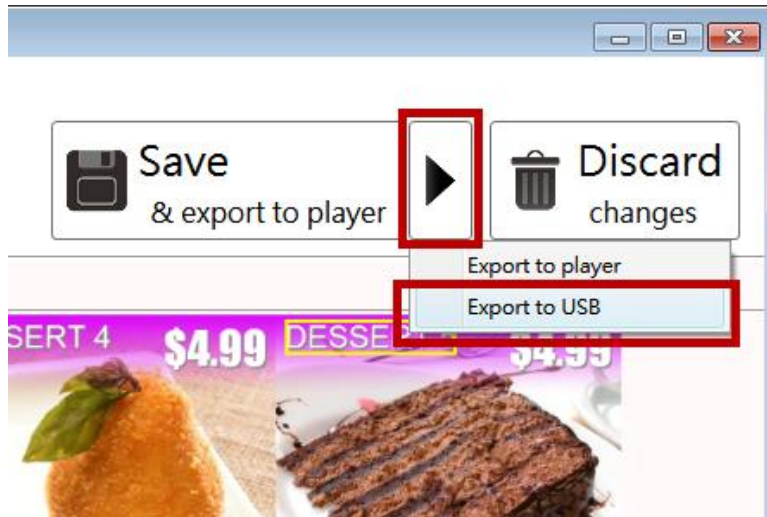
## 4.5 Export Playlist

### 4.5.1 Export playlist via USB

Click export button and click Export to USB, and then select the correct location for export.

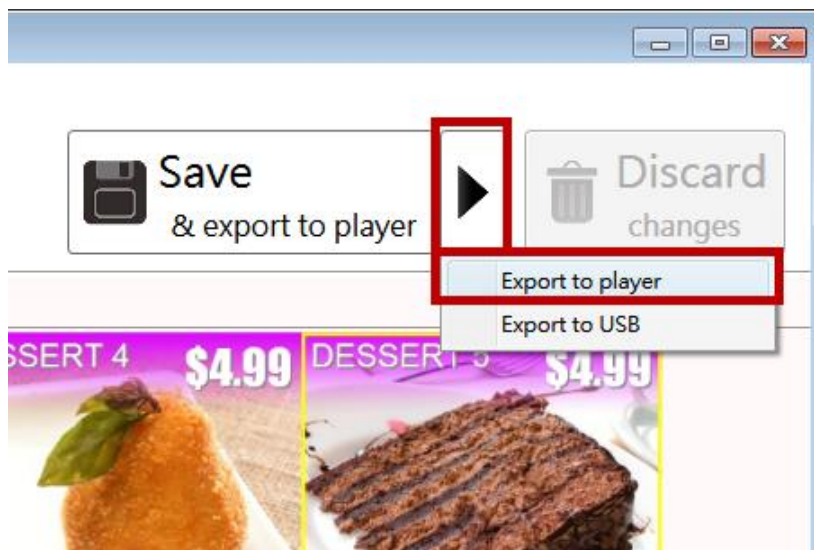
*Note:*

*SignApps will remember your action, so next time you only need to click 'Save' to export*



#### 4.5.2 Export playlist via Network

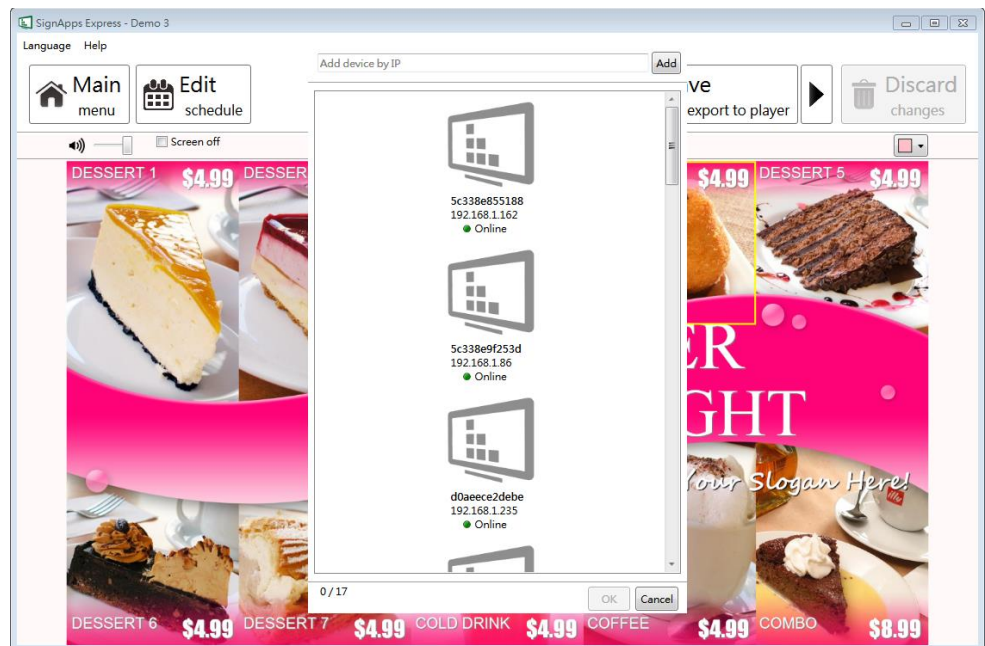
- 1 Click export button and click Export to player.



- 2 Scan devices on your network or add them by typing their IPs

**Note:**

*If a player is already associated with another playlist, it will not show in this list, please add by its IP address*



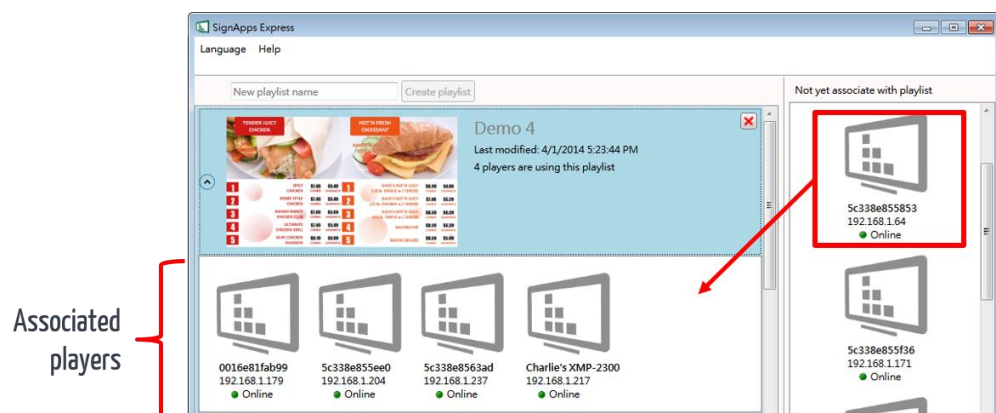
3 Select devices for export

4 After export, the selected players will be associated with this playlist

#### 4.5.3 Player association

After export, the players are associated with the playlist and will be listed under the playlist in the main menu

You can also assign player to playlist by dragging player and drop to playlist in the main menu



## 4.6 Firmware Update

- 1 Go to Help → Firmware update, select the Firmware package and click OK.
- 2 Select the player you need to update

Firmware package can be downloaded from  
<http://www.digisignage.com/>

