

Think Automation and beyond...



# HG3G

## Operator Interface

New Operator Interface. Brightest in Its Class.



Sharper. Brighter. More colorful!  
Stylish design in dark or light gray bezel.



Dark Gray



Light Gray

8.4-inch  
**600**  
cd/m<sup>2</sup>

10.4-inch  
**700**  
cd/m<sup>2</sup>

IDEC CORPORATION

An operator interface has never been so  
sharp and vivid, high speed, easy, and  
simple!

# HG3G

## Operator Interface



## Industrial Equipment

### Dust resistant

HG3G can be used as an information terminal in various applications such as production lines. An optional UV surface protection sheet is available.



## Information Device

### Bright and sharp display

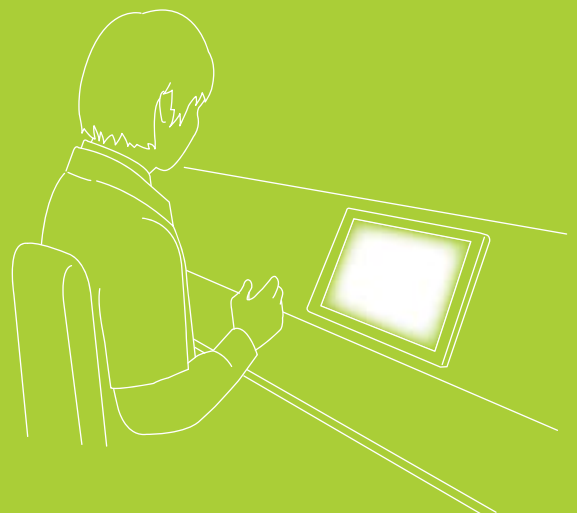
HG3G can be used as a reception or booking display. Bright and vivid, these screens are easy to use and view. The sleek design is suitable for a wide range of applications.



## Peripheral Device

### Outstanding functionality

HG3G is extremely functional as a screen ordering system. Excellent connectivity with peripheral devices and high-speed processing ensures outstanding operation of many applications.



# Brightest in its class.\* True-to-life color. High resolution.

\* Based on IDEC research as of July 2010

## LED Backlight

Energy-saving design with LED backlight  
50% less energy than conventional model of HG3F with 450 cd/m<sup>2</sup> brightness (when USB and IO are not connected)

High  
Resolution  
SVGA

65,536  
colors

High-quality  
color  
reproduction

32-scale  
dimming

TFT



Brightest  
in the Market!  
600 cd/m<sup>2</sup>  
(8.4-inch)  
700 cd/m<sup>2</sup>  
(10.4-inch)

Screen size: 8.4 or 10.4 inch

Dimensions: 231 × 176 × 54.4 mm (8.4 inch), 270 × 212 × 52.7 mm (10.4 inch)

Bezel: Dark gray or light gray

## Sharp and Vivid

### Back-light

#### Extremely bright LED backlight

Bright LED backlight provides a vivid display even in well-lit surroundings. (8.4-inch: 600 cd/m<sup>2</sup>, 10.4-inch: 700 cd/m<sup>2</sup>) screens even in bright surroundings. The combination of LED backlight and dimming function achieves the desired brightness. Long 60,000-hour service life.



### Graphics

#### More than 7,000 graphic images

1,000 graphic images have been added. Realistic images of switches, pilot lights, and other parts allow you to easily create your own custom screens.

### Display

#### High-resolution SVGA and 65,536-color display

With a high resolution (800 × 600 pixels), the SVGA LCD clearly shows small characters and thin lines. Plus true-to-life colors can be reproduced with vibrant clarity.



### Fonts

#### Sharper, clearer alpha-numeric characters

By using the stroke and 7-segment fonts, large numeric characters can be created, improving long distance visibility.

\* The screen images on this brochure are simulated pictures.



Sharp images.



Fast start-up

## High Speed



CPU

### Fast start-up, quick operation

High-speed 400 MHz CPU and unique software technology shorten the startup time after power-on. Fast start-up allows for easy debugging.

### 3-sec startup (Note)



Note: When using a standard screen image used by IDEC.

Standard Font

12345

Stroke Font

12345

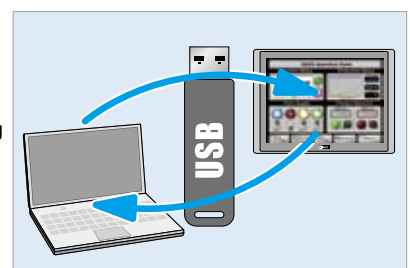
7-segment  
Font

12345 12345  
12345 12345

USB

### Fast USB2.0 communication

Project data can be downloaded and uploaded easily using a USB flash drive, allowing for easy debugging and also saving time and money.



# Simple Operation

Easy Maintenance



## Easy

### USB

USB flash drive allows for easy data transfer.

Inserting a USB flash drive into the HG3G will automatically bring up the USB transfer menu. Operator can work on errors without the use of PC.



### SD Card

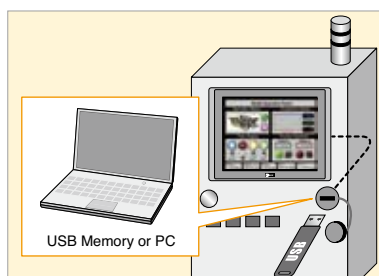
Convenient SD card slot

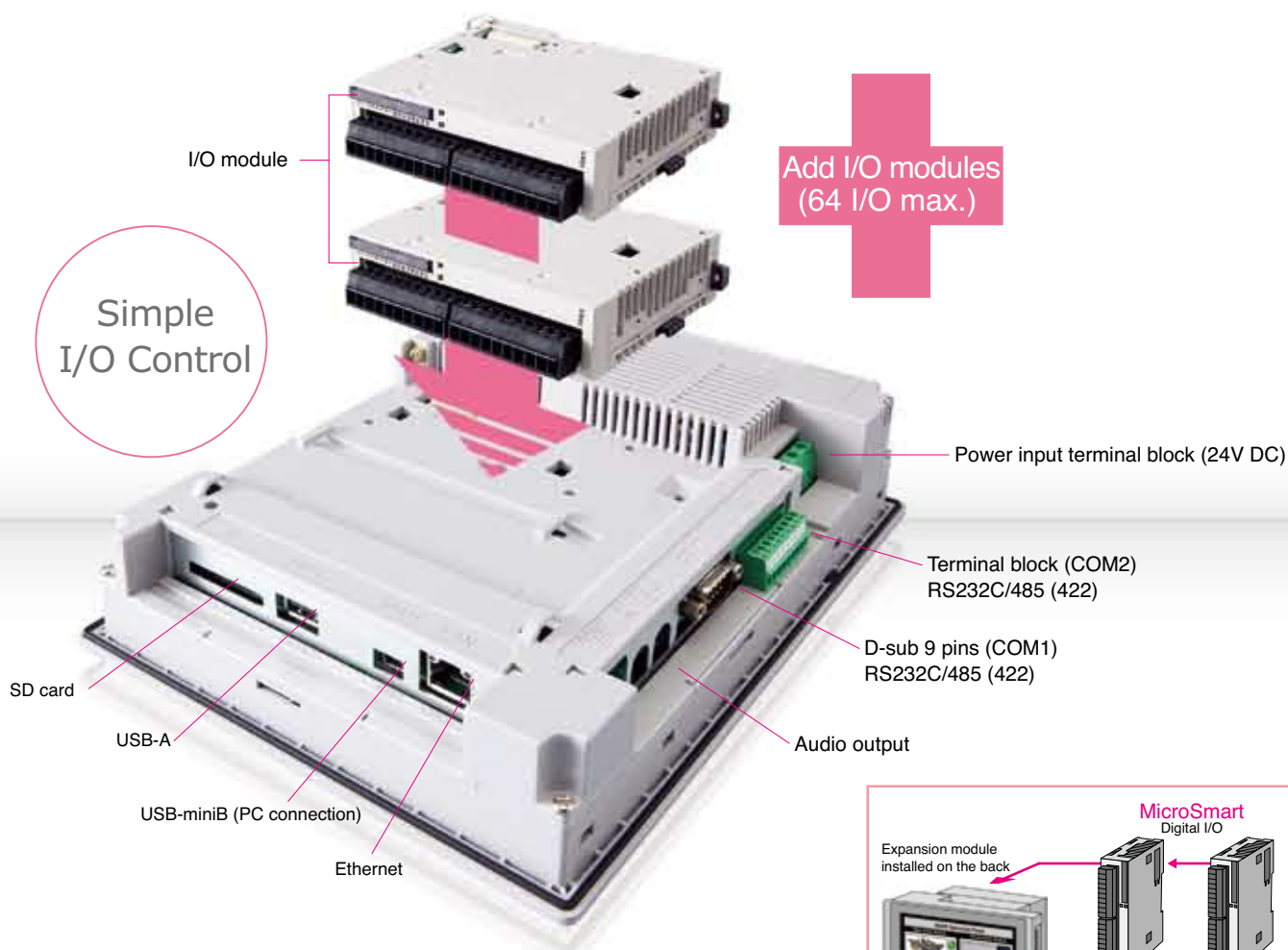
Data from the HG3G can be saved or transferred by using an SD card (32GB max.). Project data, picture data, data log data, alarm log data, screenshot data, recipe data, operation log data, audio files, and MicroSmart ladder programs can all be stored on an SD card.

### Maintenance

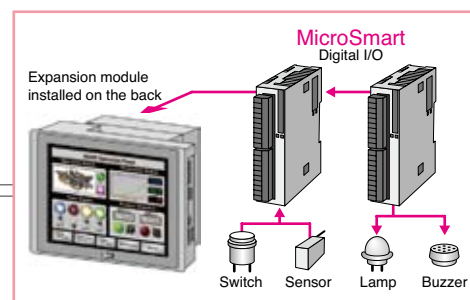
Easy data maintenance, without opening the control cabinet.

Using the USB panel-mount cable, data can be transferred without opening the panel. The pass-through function enables debugging of ladder programs in the PLC, connected to the HG3G, inside the cabinet. See "Compatible PLCs" on page 12.





## Simple Control



## Simple Connection

### I/O Module

Display and I/O control in one reduces labor time.

A maximum of two MicroSmart expansion I/O modules can be connected to one HG3G, allowing for equipment control using a small number of I/O points with easy I/O control (input, output, I/O module can be used.)

\* See "Compatible I/O Modules" on page 12.

### Ethernet Connection

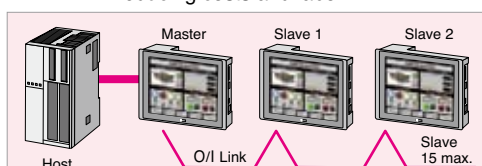
Remote data maintenance

Project data can be downloaded and uploaded to the HG3G remotely via Ethernet. One HG3G can communicate with two or more PLCs, enabling the integration of network (PC) and the control network (PLC) systems.

### O/I Link Communication

IDEC high-speed 115.2 kbps O/I Link communication.

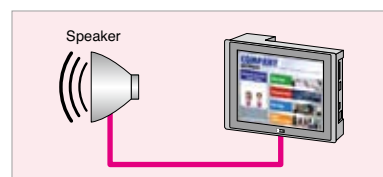
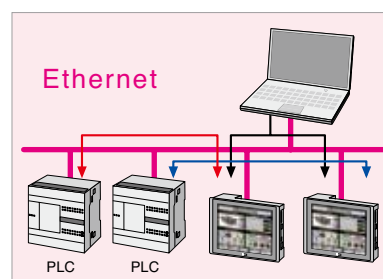
A maximum of 16 HG3Gs can be connected to a PLC using RS485 (2-wire), easily creating a high-speed network reducing costs and labor.



### Audio Output

Sound file (30 sec. max.)

Audio error messages can be sent to the operator, providing faster system recovery. Audio output can be used as a voice guidance system to improve productivity.



# HG3G Operator Interface

## Excellent visibility achieved by super-bright LED backlight. 600 cd/m<sup>2</sup> (8.4-inch), 700 cd/m<sup>2</sup> (10.4-inch)

- High-resolution SVGA (800 × 600 pixels) and 65,536 colors provides high-quality display.
- Combination of LED backlight and dimming function allows for the best brightness, while assuring a long service life (60,000 hours minimum).
- High-speed 400 MHz CPU and IDEC's unique software technology achieve fast start-up and speed of operation.
- USB and Ethernet ports on all models.
- IDEC's high-speed 115.2 kbps O/I link communication.
- More than 7,000 graphic images available in the image library. Various images such as switches and pilot lights allow you to create your own screen.
- Stroke font and 7-segment font. Large character numbers can be displayed clearly.
- USB2.0 allows you to download/upload project data from USB memory.
- Auto-start menu of USB flash drive enables easy transfer of project and historical data.
- Use of USB panel-mount cable lets you work on data maintenance directly, without opening the control cabinet.
- A maximum of two expansion MicroSmart I/O modules can be mounted, making it possible to control small equipment, with a small number of I/O points, and also to perform simple I/O control.



10.4-inch (light gray)

8.4-inch (dark gray)



(Approval for HG3G operator interface only, excluding options or expansion modules.)

## Types

Display Screen	Operation Type	Interface	Housing/Bezel Color	Type No.	Remarks
8.4-inch TFT color LCD 65,536 colors	Touch Switch (analog resistive)	COM1 [RS232C/485 (422)] COM2 [RS232C/485 (422)] LAN [10 Base-T/100 Base-TX] AUDIO OUT [LINE OUT] USB1 [USB2.0 Device] USB2 [USB2.0 Host] SD [SD Memory Card]	Light gray	HG3G-8JT22TF-W	CE UL c-UL
			Dark gray	HG3G-8JT22TF-B	
10.4-inch TFT color LCD 65,536 colors			Light gray	HG3G-AJT22TF-W	
			Dark gray	HG3G-AJT22TF-B	

## Options

Name	Type No.	Ordering Type No.	Package Quantity	Description
Application Software "Automation Organizer" (CD) (English/Japanese/Chinese)	SW1A-W1C	SW1A-W1C	1	Complete package includes Wind CFG system configuration software, WindLDR PLC programming software, and WindO/I-NV2 OI Touchscreen programming software. PDF files of English/Japanese/Chinese manuals are stored on the CD.
USB Maintenance Cable (2m)	HG9Z-XCM42	HG9Z-XCM42	1	USB Cable USB-miniB
PLC Connection Cable For IDEC MicroSmart (5m)	HG9Z-XC295	HG9Z-XC295	1	Mini DIN 8-pin (Dsub 9-pin)
PLC Connection Cable For Mitsubishi FX series (5m)	HG9Z-XC305	HG9Z-XC305	1	Mini DIN 8-pin (Dsub 9-pin)
PLC Connection Cable For Mitsubishi Q series (5m)	HG9Z-XC315	HG9Z-XC315	1	Mini DIN 6-pin (Dsub 9-pin)
PLC Connection Cable For IDEC MicroSmart (5m)	HG9Z-XC275	HG9Z-XC275	1	Mini DIN 8-pin (loose wire)
PLC Connection Cable For IDEC MicroSmart (2.4m)	FC2A-KP1C	FC2A-KP1C	1	Mini DIN 8-pin (loose wire)
USB panel-mount extension cable (1m)	HG9Z-XCE11	HG9Z-XCE11	1	For USB-A port
USB panel-mount extension cable (1m)	HG9Z-XCE21	HG9Z-XCE21	1	For USB-mini B port
Connector Conversion Cable (16cm)	HG9Z-XCT11	HG9Z-XCT11	1	To convert from D-sub 25-pin to 9-pin (used when replacing from HG3F/4F to HG3G)
Memory Card	HG9Z-XMS2	HG9Z-XMS2	1	SD Memory Card (2GB)
Protective Sheet (Note 1)	HG9Z-3D8	HG9Z-3D8PN02	2	For HG3G 8.4-inch.
	HG9Z-3DA2	HG9Z-3DA2PN02	2	For HG3G 10.4-inch.
Expansion Module Clamp (Note 2)	HG9Z-XJ1	HG9Z-XJ1PN05	5	For installing the expansion modules on the back of the HG3G (short). For total width 17.6 to 41.1mm.
	HG9Z-XJ2	HG9Z-XJ2PN05	5	For installing the expansion modules on the back of the HG3G (long). For total width 47.0 to 68.8mm.
L-shaped Terminal Block Connector for I/O Module (Note 3)	HG9Z-PMT10L	HG9Z-PMT10LPN02	2	For MicroSmart I/O Module (10-pole)
	HG9Z-PMT11L	HG9Z-PMT11LPN02	2	For MicroSmart I/O Module (11-pole)
Manual "WindO/I-NV2"	HG9Y-B1119	HG9Y-B1119	1	English

Note 1: The protective sheet is UV resistant, however, resistance against direct sunlight in outdoor usage is not guaranteed.

Note 2: Use the expansion module bracket when using expansion modules. Choose HG9Z-XJ1 (short) or HG9Z-XJ2 (long) referring to the width of modules shown on the next page.

Use XG9Z-XJ1 (short) when using any one module of ① ② ③ ④, or when using two modules in the combination of ① + ① or ① + ②.

Use XG9Z-XJ2 (long) when using two modules in the combination of ① + ③, ① + ④, ② + ②, ② + ③, ② + ④, ③ + ③, or ③ + ④. (Combination of ④ + ④ is not possible).

Note 3: See Cat No. EP1203 or instruction manual for expansion modules of MicroSmart.



## • Maintenance Parts

Name	Type No.	Ordering Type No.	Package Quantity	Description
Mounting Clip	HG9Z-4K2	HG9Z-4K2PN04	4	Four clips are supplied with HG3G.
Host Communication Plug	HG9Z-XT09	HG9Z-XT09	1	One plug (terminal block type) is supplied with HG3G.
Replacement Battery	HG9Z-XR1	HG9Z-XR1	1	Lithium battery CR2032 (one battery is supplied with HG3G)
USB Cable Lock Pin	HG9Z-XU1	HG9Z-XU1PN05	5	Used to lock USB cable (for USB2).

## • Input Modules

Input Type	Type No.	Connector	Dimensions (L × W × H mm)
8 points/DC Input	FC4A-N08B1	Removable Terminal Block	② 90.0 × 23.5 × 70.0
16 points/DC Input	FC4A-N16B1		② 90.0 × 23.5 × 70.0
16 points/DC Input	FC4A-N16B3	MIL Connector	① 90.0 × 17.6 × 70.0
32 points/DC Input	FC4A-N32B3		③ 90.0 × 29.7 × 70.0
8 points/AC Input	FC4A-N08A11	Removable Terminal Block	② 90.0 × 23.5 × 70.0

## • Output Modules

Output Type	Type No.	Connector	Dimensions (L × W × H mm)
8 points/Relay Output	FC4A-R081	Removable Terminal Block	② 90.0 × 23.5 × 70.0
16 points/Relay Output	FC4A-R161		② 90.0 × 23.5 × 70.0
8 points/Transistor Sink Output	FC4A-T08K1		② 90.0 × 23.5 × 70.0
8 points/Transistor Source Output	FC4A-T08S1		② 90.0 × 23.5 × 70.0
16 points/Transistor Sink Output	FC4A-T16K3	MIL Connector	① 90.0 × 17.6 × 70.0
16 points/Transistor Source Output	FC4A-T16S3		① 90.0 × 17.6 × 70.0
32 points/Transistor Sink Output	FC4A-T32K3		③ 90.0 × 29.7 × 70.0
32 points/Transistor Source Output	FC4A-T32S3		③ 90.0 × 29.7 × 70.0

## • Mixed I/O Modules

I/O Type	Type No.	Connector	Dimensions (L × W × H mm)
4 points/DC Input 4 points/Relay Output	FC4A-M08BR1	Removable Terminal Block	② 90.0 × 23.5 × 70.0
16 points/DC Input 8 points/Relay Output	FC4A-M24BR2	Non-removable Terminal Block	④ 90.0 × 39.1 × 70.0

- Use the expansion module bracket when using expansion modules. Choose HG9Z-XJ1 (short) or HG9Z-XJ2 (long) referring to the width of modules shown above.  
Use XG9Z-XJ1 (short) when using any one module of ①②③④, or when using two modules in the combination of ① + ① or ① + ②.  
Use XG9Z-XJ2 (long) when using two modules in the combination of ① + ③, ① + ④, ② + ②, ② + ③, ② + ④, ③ + ③, or ③ + ④.  
(Combination of ④ + ④ is not possible).
- See Cat No. EP1203 or instruction manual for expansion modules of MicroSmart.

# HG3G Operator Interface

## General Specifications

Rated Power Voltage	24V DC
Power Voltage Range	20.4 to 28.8V DC
Power Consumption	25W maximum 15W maximum when not using USB interface (USB2) or expansion module interface (EXT)
Allowable Momentary Power Interruption	10 ms maximum
Inrush Current	30A maximum
Dielectric Strength	1000V AC, 10 mA, 1 minute between power and FG terminals
Insulation Resistance	10 MΩ minimum between power and FG terminals (500V DC megger)
Operating Temperature	0 to +50°C
Operating Humidity	10 to 90% RH (no condensation)
Storage Temperature	-20 to +60°C
Storage Humidity	10 to 90% RH (no condensation)
Pollution Degree	2
Vibration Resistance	5 to 9 Hz amplitude 3.5 mm, 9 to 150 Hz, acceleration 9.8 m/s <sup>2</sup> 10 cycles (100 minutes) on each of three mutually perpendicular axes
Shock Resistance	147 m/s <sup>2</sup> , 11 ms 5 shocks on each of three mutually perpendicular axes
Noise Immunity	Fast transient/burst test, Power terminals: ±2 kV, Communication line: ±1 kV (IEC 61131-2: 2007)
Electrostatic Discharge	Contact ±6 kV, air ±8 kV (IEC 61131-2: 2007)
Corrosion Immunity	Free from corrosive gases
Mounting	Panel mounting
Degree of Protection	IP66
Dimensions	HG3G-8: 231.0W × 176.0H × 54.4D mm HG3G-A: 270.0W × 212.0H × 52.7D mm
Weight (approx.)	HG3G-8: 1.25 kg HG3G-A: 1.65 kg

- Do not use the HG3G in an environment subject to strong ultraviolet rays, otherwise the LCD quality will deteriorate.

## General Specifications

Switching Element	Analog resistive membrane
Operating Force	0.55 to 2.3N
Mechanical Life	1,000,000 operations
Acknowledgement Sound	Electronic buzzer or speaker output

## Function Specifications

Screen Types	Base screen, sub screen, system screen
No. of Screens	Base screen: 3000 max. Sub screen: 3015 max.
User Memory	12 MB (including expansion fonts)
Parts	Bit Button, Word Button, Goto Screen, Print Button, Key Button, Multi Button, Keypad, Selector Switch, Potentiometer, Numerical Input, Character Input, Pilot Lamp, Multi-State Lamp, Picture Display, Message Display, Message Switching Display, Alarm List Display, Alarm Log Display, Numerical Display, Bar Graph, Trend Chart, Pie Chart, Meter, Calendar, Bit Write Command, Word Write Command, Goto Screen Command, Print Command, Screen Script Command, Multi Command, Timer
Calendar	Year, Month, Day, Hour, Min., Sec., Day of Week ±60 sec per month (at 25 °C)
Power Failure Backup Data	Calendar, log data, keep internal relay, keep internal register
Battery Life	4 years (at 25°C) (1-year warranty)

## Display Specifications

Display Color		TFT Color LCD
Color/Shade		65,536 colors
Effective Display Area		HG3G-8: 170.4W × 127.8H mm HG3G-A: 211.2W × 158.4H mm
Display Resolution		800W × 600H pixels
View Angle		Right and left 80°, up 80°, down 60°
Backlight		LED
Backlight Life		60,000 hours minimum (Note)
Brightness		HG3G-8: 600 cd/m <sup>2</sup> , HG3G-A: 700 cd/m <sup>2</sup>
Brightness Adjustment		32 scales
Backlight Replacement		Impossible (by IDEC only)
Display Character Size	1/4 size	8 × 8 pixels (Western European language: ISO 8859-1, Central European language: ANSI 1250, Baltic: ANSI 1257, Cyrillic: ANSI1251, Japanese katakana and symbols: JIS 8-bit code)
	1/2 size	8 × 16 pixels (Western European language ISO 8859-1, Central European language: ANSI 1250, Baltic: ANSI 1257, Cyrillic: ANSI1251, Japanese katakana and symbols: JIS 8-bit code)
		16 × 32 pixels, 24 × 48 pixels, 32 × 64 pixels (Western European language: ISO 8859-1)
	Full size	16 × 16 pixels (Japanese JIS first and second level characters, simplified Chinese, traditional Chinese, Korean)
	Double size	32 × 32 pixels (Japanese JIS first level characters, Mincho font)
	Scalable	Width 8 to 128 dots (1/2 size fixed) (ISO 8859-1 western language, 7-segment)
Quantity of Characters	1/4 size	100 characters × 75 lines
	1/2 size	100 characters × 37 lines
	Full size	50 characters × 37 lines
	Double size	25 characters × 18 lines
Character Magnification		0.5, 1, 2, 3, 4, and 8 vertically and horizontally (except for scalable fonts)
Character Attribute		Blink (1 or 0.5 sec period), reverse, bold, shadowed
Graphics Type		Straight line, polyline, rectangle, circle, ellipse, arc, pie, equilateral polygons (3, 4, 5, 6, 8), paint, bitmap image
Window Display		3 popup screens + 1 system screen

Note: The backlight life refers to the time until the surface brightness reduces by half after continuous use at room temperatures.

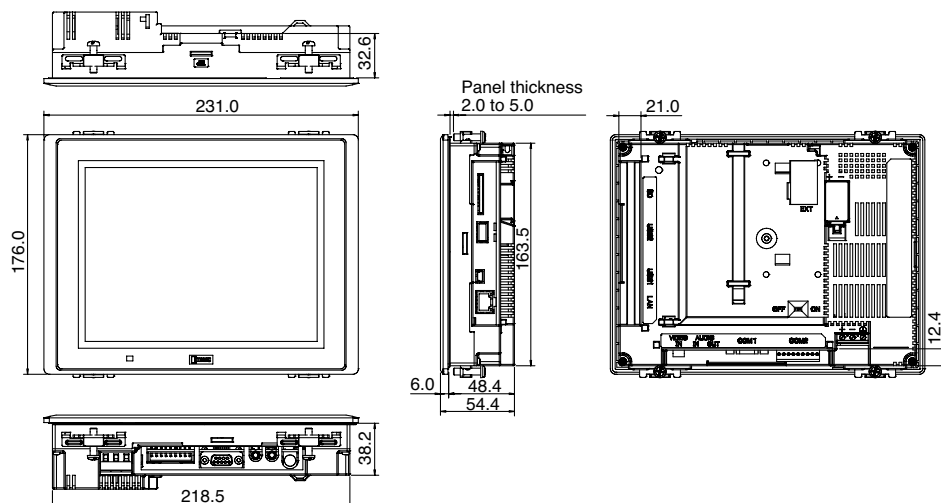
## Interface Specifications

Serial Interface (COM1)	Electrical Characteristics	EIA RS232C/485 (422) compliant
	Transmission Speed	1200, 2400, 4800, 9600, 19200, 38400, 57600, 115200, 187500 bps (Note)
	Synchronization	Asynchronous
	Communication Method	Half or full duplex
	Control System	Hardware control or none
Serial Interface (COM2)	Connector	D-sub 9-pin connector
	Electrical Characteristics	EIA RS232C/485 (422) compliant
	Transmission Speed	1200, 2400, 4800, 9600, 19200, 38400, 57600, 115200, 187500 bps (Note)
	Synchronization	Asynchronous
	Communication Method	Half or full duplex
Ethernet Interface (LAN)	Control System	Hardware control or none
	Connector	Detachable 9-pin terminal block
Audio Interface	Interface	IEEE802.3 (10/100BASE-T) compliant
	Connector	Modular connector (RJ-45)
USB Interface (USB2)	Interface	LINE OUT (stereo)
	Connector	Mini Jack connector (ø3.5 mm)
USB Interface (USB1)	Interface	USB 2.0 high speed (480 Mbps)
	Connector	USB Type A connector
Memory Card Interface (SD)	Interface	USB 2.0 high speed (480 Mbps)
	Connector	USB Type Mini-B connector
Expansion Module Interface (EXT)	Interface	SD memory card, SDHC memory card
	Connector	SD memory card socket
Expansion Module Interface (EXT)	Interface	MicroSmart I/O Unit
	Connector	

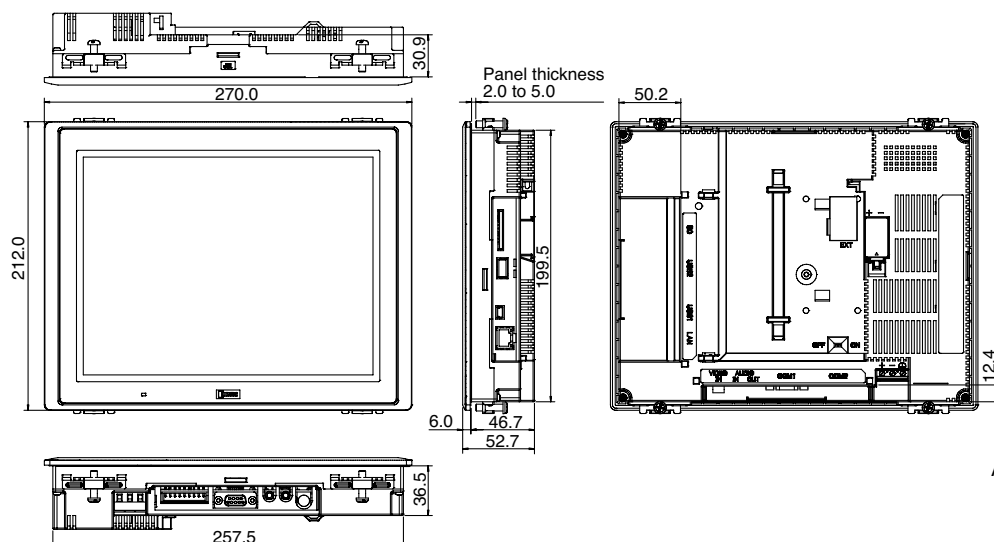
Note: 187500 bps is available only with SIEMENS SIMATIC S7-300 series (MPI port direct connection).

## Dimensions

### • HG3G-8 (8.4-inch)



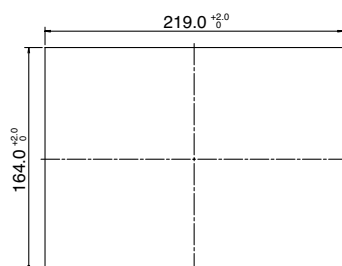
### • HG3G-A (10.4-inch)



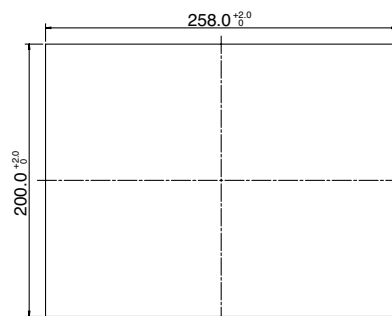
All dimensions in mm.

## Panel Cut-out

### • HG3G-8 (8.4-inch)



### • HG3G-A (10.4-inch)



- Install the HG3G into a panel cut-out by tightening the four mounting clips (supplied with the HG3G) to a torque of 0.3 to 0.4 N·m (HG3G-8) and 0.5 to 0.6 N·m (HG3G-A).

All dimensions in mm.

Note: Do not tighten with excessive force, otherwise the HG3G and screen will be distorted. Also waterproof characteristics may be lost.

## Compatible PLCs

Manufacturer	Series	Applicable CPU Unit	CPU Connection	Link Unit	Ethernet
IDEC	OpenNet Controller	FC3A-CP2	✓		✓
	MicroSmart	FC4A-C10R2	✓		✓
		FC4A-C16R2/C24R2, FC4A-D20K3/D20S3, FC4A-D20RK1/D20RS1, FC4A-D40K3/D40S3	✓	✓	✓
		FC5A-C10R2/C16R2, FC5A-C24R2, FC5A-C10R2C/C16R2C, FC5A-C24R2C	✓	✓	✓
		FC5A-D16RK1/D16RS1	✓	✓	✓
		FC5A-D32K3/D32S3	✓	✓	✓
Mitsubishi	MELSEC-A	A1N, A2N, A3N, A1SH		✓	
		A2CCPUC24	✓		
		A0J2, A0J2H, A2A, A3A, A2U, A3U, A4U, A2US, A2USH-S1		✓	
	MELSEC-QnA	Q4ACPU, Q4ARCPU, Q3ACPU, Q2ACPU, Q2ACPU-S1		✓	✓
		Q2ASHCPU, Q2ASHCPU-S1, Q2ASCPU, Q2ASCPU-S1		✓	✓
		Q00CPU, Q01CPU	✓		✓
	MELSEC-Q	Q02CPU, Q02HCPU	✓	✓	✓
		Q06HCPU, Q12PHCPU, Q25HCPU		✓	✓
		Q00JCPU			✓
	MELSEC-FX	FX0, FX0N, FX1, FX2, FX2C, FX-0S, FX-1S	✓		
		FX2N, FX2NC, FX1N, FX1NC	✓	✓	
		FX3UC, FX3U, FX3G	✓	✓	
OMRON	SYSMAC-C	C500, C500F, C1000H, C1000HF, C2000, C2000H, C200HS, C200HE, C200HG, C200HX, C120, C120F		✓	
		C20H, C28H, C40H, C60H, CQM1H, C200HS-CPU21/23/31/33, C200HE-CPU42, C200HG-CPU43/63, C200HX-CPU44/64	✓		
		CPM1, CPM1A		✓	
		CPM2A	✓	✓	
		SYSMAC-CS1	✓	✓	✓
		SYSMAC-CJ	✓	✓	✓
	SYSMAC-CP	CP1H		✓	
Allen-Bradley	PLC-5	PLC-5, PLC-5E			✓
	SLC-500	SLC5/03, SLC5/04, SLC5/05	✓		✓
	MicroLogix	MicroLogix1000, MicroLogix1100, MicroLogix1200, MicroLogix1500	✓		✓
		ControlLogix			
		ControlLogix5550, ControlLogix5555			
	CompactLogix	1768CompactLogix, 1769CompactLogix	✓		
	FlexLogix	1794-L33, 1794-L34	✓		

Manufacturer	Series	Applicable CPU Unit	CPU Connection	Link Unit	Ethernet
SIEMENS	S7-200	CPU212, CPU214, CPU215, CPU216, CPU221, CPU222, CPU224, CPU226, CPU224XP, CPU226XM	✓		
	S7-300	CPU313C-2P/P	✓		
Keyence	KV-700, KV-1000	KV-700, KV-1000	✓	✓	
Modbus	Schneider Twido	TWDLCAA16DRF		✓	
	Modicon Momentum	TWDLCAA24DRF			
Modicon	Momentum	171CCC96020			✓
Panasonic	FP series	FP0, FP10, FP10SH, FP1, FP2, FP2SH, FPΣ	✓		
Koyo	KOSTAC SZ	SZ-4	✓		
		SU-6H	✓		
	KOSTAC SU	SU-5E, SU-6B	✓	✓	
		SU-5M, SU-6M		✓	

- Ethernet link unit may be necessary for some PLCs.
- The company names and product names are registered trademarks or brand names.
- The compatible PLC information is for reference only (except for IDEC PLCs), and IDEC does not guarantee the operation of any other manufacturers' PLC. When using other manufacturers' PLCs, read their specifications and instruction manual carefully. The PLC must be operated correctly under the user's responsibility.

The updated information of the compatible PLCs can be found at the following website.

<http://www.IDEC.com/oi/drivers>

## Automation Organizer



Automation Organizer

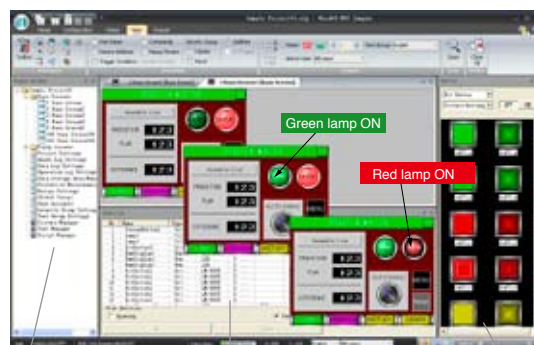
**WindO/I-NV2**

**O/I Touchscreen Programming Software Ver. 4.\***

Useful functions allow you to create and test programs easily and quickly.

**State view and monitoring functions reduce programming work**

Screen Image



Screen/project list

Objects list

Parts list



### Safety Precautions

Read the safety precautions described in the user's manual to confirm correct operation of the HG3G.

Specifications and other descriptions in this catalog are subject to change without notice.



## IDEC CORPORATION

7-31, Nishi-Miyahara 1-Chome, Yodogawa-ku, Osaka 532-8550, Japan  
Tel: +81-6-6398-2571, Fax: +81-6-6392-9731  
E-mail: [marketing@idec.co.jp](mailto:marketing@idec.co.jp)

**IDEC CORPORATION (USA)**  
1175 Elko Drive, Sunnyvale, CA 94089-2209, USA  
Tel: +1-408-747-0550 / (800) 262-IDEC (4332)  
Fax: +1-408-744-9055 / (800) 635-6246  
E-mail: [opencontact@idec.com](mailto:opencontact@idec.com)

**IDEC CANADA LIMITED**  
3155 Pepper Mill Court, Unit 4, Mississauga, Ontario, L5L 4X7, Canada  
Tel: +1-905-890-8561, Toll Free: (888) 317-4332  
Fax: +1-905-890-8562  
E-mail: [sales@ca.idec.com](mailto:sales@ca.idec.com)

**IDEC AUSTRALIA PTY. LTD.**  
2/3 Macro Court, Rowville, Victoria 3178, Australia  
Tel: +61-3-9763-3244, Toll Free: 1800-68-4332  
Fax: +61-3-9763-3255  
E-mail: [sales@au.idec.com](mailto:sales@au.idec.com)

**IDEC ELECTRONICS LIMITED**  
Unit 2, Beechwood, Chineham Business Park, Basingstoke, Hampshire RG24 8WA, UK  
Tel: +44-1256-321000, Fax: +44-1256-327755  
E-mail: [sales@uk.idec.com](mailto:sales@uk.idec.com)

**IDEC ELEKTROTECHNIK GmbH**  
Wendenstrasse 331, 20537 Hamburg, Germany  
Tel: +49-40-25 30 54 - 0, Fax: +49-40-25 30 54 - 24  
E-mail: [service@idec.de](mailto:service@idec.de)

**IDEC (SHANGHAI) CORPORATION**  
Room 608-609, 6F, Gangtai Plaza, No. 700, Yan'an East Road, Shanghai 200001, PRC  
Tel: +86-21-5353-1000, Fax: +86-21-5353-1263  
E-mail: [idec@cn.idec.com](mailto:idec@cn.idec.com)

**IDEC (BEIJING) CORPORATION**  
Room 211B, Tower B, The Grand Pacific Building, 8A Guanghua Road, Chaoyang District, Beijing 100026, PRC  
Tel: +86-10-6581-6131, Fax: +86-10-6581-5119

**IDEC (SHENZHEN) CORPORATION**  
Unit AB-3B2, Tian Xiang Building, Tian'an Cyber Park, Fu Tian District, Shenzhen, Guangdong 518040, PRC  
Tel: +86-755-8356-2977, Fax: +86-755-8356-2944

**IDEC IZUMI (H.K.) CO., LTD.**  
Units 11-15, Level 27, Tower 1, Millennium City 1, 388 Kwun Tong Road, Kwun Tong, Kowloon, Hong Kong  
Tel: +852-2803-8989, Fax: +852-2565-0171  
E-mail: [info@hk.idec.com](mailto:info@hk.idec.com)

**IDEC TAIWAN CORPORATION**  
8F-1, No. 79, Hsin Tai Wu Road, Sec. 1, Hsi-Chih, Taipei County, Taiwan  
Tel: +886-2-2698-3929, Fax: +886-2-2698-3931  
E-mail: [service@tw.idec.com](mailto:service@tw.idec.com)

**IDEC IZUMI ASIA PTE. LTD.**  
No. 31, Tannery Lane #05-01, HB Centre 2, Singapore 347788  
Tel: +65-6746-1155, Fax: +65-6844-5995  
E-mail: [info@sg.idec.com](mailto:info@sg.idec.com)

[www.idec.com](http://www.idec.com)