



**TLC Health Systems**  
*Innovators in Focused Light Therapy*

# Owner's Manual TLC Spectrabrite™ Clinical Unit



Prepared for our Valued Customers by:

**TLC Health Systems**  
P.O. Box 264 Westfield, IN 46074  
Phone: 317-804-1803 Email: [info@tlchealthsystems.com](mailto:info@tlchealthsystems.com)  
Website: [www.tlchealthsystems.com](http://www.tlchealthsystems.com)



P.O. Box 264, Westfield, Indiana 46074

Contact your local registered salesperson who contacted you first for more information, or  
Call: 317-804-1803 Email: [info@tlchealthsystems.com](mailto:info@tlchealthsystems.com) Website: <http://www.tlchealthsystems.com>

***Pain Relief and other Health Benefits at the Speed of Light – Patent Pending – Scientifically Engineered***

Dear Valued Customer,

It is an honor to provide and serve you with our amazing and very unique TLC Spectrabrite™ technology that has taken over 20 years of research to perfect. We want to help you realize its potential for you, your family, friends, clients, patients, and even your pets!

Each of our TLC Spectrabrite™ products has been designed and engineered with many proprietary health programs. Each program is delivered via: light pulsing frequencies, sine waves, longitudinal scalar wave energy, and sound, whether you use the preprogrammed settings or manually set colors to address certain issues. (Instructions provided in the manual)

Light is an essential food for plants; likewise, we too, require light for health. Now by using TLC Spectrabrite's™ technology you may access all the beneficial light frequencies while eliminating harmful rays and bad frequencies. This allows you to enjoy almost innumerable TLC Spectrabrite's™ light therapies that are beneficial to your health, your family, friends and patients. So many of our customers have claimed TLC Spectrabrite™ has helped relieve their patients from sicknesses and pains without side effects. We at TLC desire this for you and everyone else as well!

TLC Health Systems uses Spectrabrite only as our delivery system for certain amounts of our TLC Health Systems scientific and proprietary health protocols. If what you are about to purchase is just a Spectrabrite look alike from someone else and it is not our official TLC Health System “**TLC Spectrabrite™**” product(s), then you are not getting the real thing. Any substitute will not do what our complete technology does. We alone have what is called TLC Spectrabrite™ products and no other look alike imitations even with the Spectrabrite's name on it can compare with or do what our official TLC Spectrabrite™ products do.

TLC Health Systems also specializes in Class III and Class IV lasers as well.

TLC Spectrabrite™: Pain Relief and other Health Benefits at the Speed of Light.

From all of us at,

*T.L.C. Health Systems*

TLC Health Systems



*Pain Relief and other Health Benefits at the Speed of Light – Patent Pending – Scientifically Engineered*

## **Owner's Manual - For Your Totally Unique TLC Spectrabrite™ Clinical Unit**

### **Letter From Our TLC Spectrabrite™ Inventor**

The use of light therapy is a very old concept indeed. Many ancient cultures practiced various forms of Helio-therapy, including the people of ancient Egypt, Greece and Rome. The Inca, Assyrian and early Germanic tribes also used the sun for health-augmenting purposes. Also, Indian medical literature dating back to 1500 BC describes several treatments which combine herbs and natural sunlight to treat assorted skin conditions. Similar references are also found in Oriental writings dating back to 200AD.

However, a Faroese physician, one Niels Finsen, is believed to be the father of modern phototherapy. He developed the first artificial light source for this purpose, and used his invention to treat lupus vulgaris. He was awarded the Nobel Prize in Physiology in the year 1903. Since that time, large arrays of treatments have been developed from the use of controlled light sources, and various light frequencies. These devices are commonly used to treat such ailments as acne and swelling, by means of low-level laser light, red light, near infrared and ultraviolet frequencies. However, relief from pain constitutes the greatest health utilization of this technology.

Most apparatuses designed for light therapy applications consist of a single light source, emitting a single color, and a single frequency band. Most of these light sources emit steady-state radiation and are designed for low energy application.

The present version of our TLC Spectrabrite™ Clinical Unit totally eclipses all existing technologies in the lower price ranges, and supplies greater energy delivery, selectable programmed frequencies, and the versatility of multiple wavelength utilization, by program choice, wand selection, or both. The apparatus also contains a micro-processor which is capable of holding 999 light therapy programs. These programs automatically modify the behavior of the entire instrument so that it is capable of performing a multitude of tasks, such as changing basic color tones, altering pulse rates, blending colors automatically, timing each light therapy session, and much more.

We at Millennial Health Systems LLC along with our partners at TLC Health Systems have upgraded and improved the TLC Spectrabrite™ units to be the most advanced units of their kind and because there are no other Spectrabrite devices like the unique TLC Spectrabrite™ units, we are confident you will benefit greatly from using any of their Unique TLC Spectrabrite™ products, whether it is the TLC Spectrabrite™ Clinical Unit, their Light Pens, Light Disks, etc. All can deliver years of trouble free service, and are reasonably simple to use. We wish you good health and blessings on your journey “Into the Light.”

Welcome to the TLC Health Systems Family of TLC Spectrabrite™ units containing Focused Low Level Light Therapy (LLLT) Instruments.

Inventor,

*David R. High*

**P.S. Please read this entire manual before using your unique TLC Spectrabrite™ equipment.**

## Table of Contents

Comparison of TLC Spectrabrite™ against others .....	Page #1.
Thank you Letter to Our Valued Customer.....	Page # 2.
Introduction : Letter written by Inventor, David High.....	Page # 3.
Table of Contents.....	Page # 4.
Section I : The Purpose of Your TLC Spectrabrite™ Clinical Unit.....	Page # 5.
Section II : Safety Features.....	Page # 6.
Section III : The Physical Layout of Your Machine.....	Page # 7-12.
Section IV : Check-Out, Startup and Self Diagnosis TLC Spectrabrite™...Page # 13.	
Section V : Check-Out and Self Diagnosis.....	Page # 14.
Section VI : Operating Your TLC Spectrabrite™ Clinical Unit.....	Page #15
Section VI : Schematic of TLC Clinical Unit and Operating Your Unit.....	Page # 16.
Section VII : Manual Mode Operation - TLC Spectrabrite™ Clinical Unit...Page # 17.	
Section VIII : Program Mode.....	Page # 18.
Section IX : Light Pads and Light Wands information .....	Page #19.
Section X : Warranty.....	Page #20.
Pictures of : Light Pads and Light Wands .....	Page #21.
Section XI :Quick Start Programing and Manually Dial In Custom Colors.....	Page #22-27.
Section XII :Testimonials and How Other Doctors use <u>TLC Spectrabrite™</u> ...Page #28.	
Common Applications: for TLC Spectrabrite™ Clinical Unit (LLLT).....	Page #29.
Recommended Items: What to have on hand when using your Clinical Unit..	Page #30.
Treatment Comparison: Which one would you choose? .....	Page #31.
Suggested Product to purchase on first order to have best and lasting results...Page #32.	



*Pain Relief and other Health Benefits at the Speed of Light – Patent Pending – Scientifically Engineered*

**Please read this entire manual before and during use until you're competent in using unit.**

## **Section I: The Purpose of Your TLC Spectrabrite™ Clinical Unit**

While your TLC Spectrabrite™ unit and its associated accessories are powerful, versatile, and convenient, please note that TLC Spectrabrite™ equipment is not designed to diagnose or treat disease, injury, or illness. Its purpose is to deliver strong doses of Light Energy and our proprietary protocols to various areas of the human body, with the primary purpose of assisting in pain management and physical discomfort caused by stiff muscles, superficial injuries, and poor circulation. Also, this device could increase local blood flow, stimulate sluggish tissue processes, and improve the immune system, collectively helping the body's natural healing mechanisms.

Through the years, science has demonstrated that light energy delivered in various colors, frequencies, pulse rates, and color combinations has the ability to affect the human body in a pleasant and positive manner, resulting in an uplifted psychological attitude, better blood flow, less stiffness, and pain relief. Accordingly, our technology has been developed to supply a maximum value of safe but powerful levels of Light Energy, at beneficial frequencies and tested pulse rates, all of which provide positive results. While we have never received a notice of negative or harmful side effects from the utilization of our technology please use extreme caution whenever a person who is subject to epilepsy seizure is in the same room while one of our TLC Spectrabrite™ products might be in use, if they are then cover their eyes completely.

Naturally, we recommend that all safety precautions be taken while using the TLC Spectrabrite™, such as the safety glasses to protect the eyes from intense flashes of lights, and the use of recommended isolation power supplies and low-voltage electrical accessories which protect the operator from electrical hazards. Observing these precautions will ensure that your TLC Spectrabrite™ Unit is used with the utmost of confidence and versatility to promote numerous beneficial results, a partial list of which appears below:

- Pain management
- Soothing of acne conditions
- Wrinkle reduction
- Lowering inflammation
- Collagen stimulation
- Superficial wound care
- Fat reduction
- And much, much more!



*Pain Relief and other Health Benefits at the Speed of Light – Patent Pending – Scientifically Engineered*

## **Section II: Safety Features**

### **1.) The Spectrabrite™ Case.**

The Spectrabrite™ enclosure is a Nema One metal case, constructed of 15 gauge sheet steel. A Nema One enclosure is designed to prevent ingress of solid foreign objects and body parts, from accidental contact with the internal workings. Although Nema One construction will provide some protection from dripping water and occasional splashing, the case is not waterproof, and should be treated accordingly.

### **2.) External Power Supply.**

The main Spectrabrite™ power supply is an external unit self-contained in a molded plastic case. This unit is connected to the main console by means of a disconnect jack located in the rear of the unit, approximately behind the main power switch. This arrangement allows for immediate service of the device in the event of a power supply failure, and allows for rapid disconnect from the AC line if necessary.

### **3.) Automatic Over-Voltage Protection.**

Spectrabrite™ circuitry is designed with an automatic over-voltage protection feature which will cut off power to the main circuit board in the event of an over-voltage situation. This electronic feature not only protects the internal workings during testing and calibration, but also during operation as it will prevent use of the device in the event of an internal voltage anomaly.

### **4.) Low Voltage Internal Circuitry.**

All internal circuitry is very low voltage in nature; the highest internal potential is rated at 16.00 volts DC. The processor voltages are 9 volts DC and 5 volts respectively, while external potentials delivered to light-emitting devices is less than 5 volts DC. Although physical contact with a human being is extremely unlikely, no shock hazard would exist if such an event were to occur. Clinical Unit alone requires 15 watts of power to run and each paddle requires 15 watts, thus with 4 paddles running at the same time the total unit requires 75 watts of total power.

### **5.) Low Voltage External Appliances.**

Potentials applied to external light generating devices (LEDs) shall not exceed 5 volts. This is an ultra-safe voltage for human use, as it compares to the potentials available in a common two cell flashlight; and it represents optimal operating voltage for the Light Emitting Diodes.

### **6.) Water-Proof Wands.**

TLC Spectrabrite™ Wands are constructed of rigid plastic tubing, and encased within a heat-shrink envelope. All electronic components are completely self contained, and totally isolated from the outside world. All Wands are completely water-proof, unless damaged, and are water-emersible at the light-emitting end.

### **7.) Low Voltage LEDs.**

All Spectrabrite Light Emitting Diodes are low voltage devices. This is true for both Wands and Light Pads. Industrial grade LEDs are fabricated in rugged epoxy enclosures, which will not rupture or explode as a miniature light bulb might do. Accordingly, if Light Pads or Wands come in contact with the user, he is completely protected from electrical forces at all times.

### **8.) Oil-resistant Electric Cords.**

Power Cords connecting Light Pads and Light Wands to the main TLC Spectrabrite™ Console, are very flexible, water-tight, and oil-resistant thus diminishing potential problems due to contact with oil and other liquids in the environment. Such liquids, especially oil, have the tendency to degrade the electrical insulation on other types of wiring, and thus could constitute a potential hazard.

### **9.) Radio Frequency Emissions.**

The use of low power DC circuits in the TLC Spectrabrite™ Clinical Unit ensures almost zero production of RF Emissions during normal use. This is a very important feature, as TLC Health Systems and MHS is concerned for the health of the operator, as well as the condition of our environment. Our atmosphere is already filled with a plethora of unnecessary Radio Frequency Emissions, and do not want to contribute to this ever-increasing ocean of RF noise.

## **Section III : The Physical Layout of Your Machine – See schematic on page 18.**

Please refer to (**page 18**) entitled **Figure # 1** this is a schematic representation of the TLC Spectrabrite™ Control Panel. Each control feature is individually numbered, and shall be explained and elaborated upon by referencing specifically to its functional name and associated number. In order to understand the fundamental concept featured in this invention, the reader must bear in mind the fact that this instrument utilizes, as its primary energy delivery component, a tri-colored, high powered, LED system, which can deliver three primary colors simultaneously, in any proportional mix desired by the operator. The output device is primarily a Light Pad, but it may also be a Light-Wand generating a specific color.

### **Number 1: The Control Panel Back Plate.**

The Back Plate is fabricated from 15 gage sheet steel. This backing plate forms the basis of the entire control system for the TLC Spectrabrite™, in that it provides a mounting surface for each control element, such as switches, indicator lamps, LCD Screen, potentiometers, etc. The physical arrangement for these components is very important, and shall be discussed in more detail in other sections of this manual. However, it is very important for the reader to become familiar with each control feature on this panel.

### **Number 2: Program Navigation Joy Stick or Program Stick in Skematic on page 16**

The Program Navigation Joy Stick is a four position control device (up-down-right-left), which allows for multiple circuit manipulations to be accomplished with one control switch. This appliance is used for:

- a) Selecting a desired program, or programs from the program data base.
- b) Loading said program(s).
- c) Determining the desired Output Port for each program selected.
- d) Down-loading of programs to their proper destinations.

### **Number 3: Red Lamp Intensity; Manual Control.**

This control component is a potentiometer, or adjustment control, which is used to manually determine the intensity, or the brilliance, of the Red light generating component within the RGB-LED ( Red, Green, Blue Light Emitting Diode ) situated upon the light generating output device; The Light Pad, or Light-Wand.

### **Number 4: Green Lamp Intensity; Manual Control.**

This control component is a potentiometer, or adjustment control, which is used to manually determine the intensity, or brilliance, of the Green light generating component within the RGB-LED( Red, Green, Blue Light Emitting Diode ) situated upon the light generating output device; either a Light Pad, or a Light-Wand.

### **Number 5: Blue Lamp Intensity; Manual Control.**

This control component is a potentiometer, or adjustment control, which is used to manually determine the intensity, or the brilliance, of the Blue light generating component within the RGB-LED (Red, Green, Blue Light Emitting Diode) situated upon the light generating output device; either a Light Pad, or a Light-wand.

### **Number 6: Manual Mode, Indicator Lamp.**

This control component is an RGB-LED whose function is to demonstrate when the operator has chosen to utilize the “Manual Mode,” and also to indicate which of the three possible colors is being adjusted. Accordingly, when the Red Lamp Intensity is being adjusted in Manual Mode, this indicator lamp will glow red. When the Green Lamp Intensity is being adjusted, this indicator will glow green, and when the Blue Lamp Intensity is being adjusted, this LED will glow blue in color. When more than one color is selected in Manual Mode, the indicator lamp will display the blended color.

### **Number 7: Manual Mode, Treatment Duration Time.**

The Manual Mode Treatment Duration Time control is a control knob which is used to select the duration of the treatment time in the manual mode of operation. Treatment time is adjustable from 1 minute to 30 minutes using the manual mode control knob. The selected time setting is made visible by means of an internal computer program and is then displayed upon the LCD screen. When the pre-set time limit is reached, power flow to the associated output port is automatically cut off.



## **Number 8: Program Select.**

The Program Select Button is a panel mounted, momentary contact, push button, which will down-load the selected program and all associated operational parameters to the appropriate output port if and only if the operator manually depresses this switch. Accordingly, the operational characteristics for a given program are not committed to the output circuitry until the corresponding Run Button is activated (See # 12). The Program Select Button must be pushed to deliver the desired operational features to the output port regardless of which mode the TLC Spectrabrite™ is operating in.

## **Number 9: LCD Screen for Program Selection and Display.**

The LCD Screen is the operational centerpiece of the TLC Spectrabrite™ Technology. This read-out screen supports and facilitates all available functions contained within the TLC Spectrabrite™, regardless of the mode of operation selected. However, the most important functions provided by this component include listing all the stored programs and their inherent characteristics for the operator's convenience, selecting appropriate output ports, selecting treatment time durations, selecting repetition rates, color tones, color combinations and desired primary light frequencies.

## **Number 10: Port One Output Connector.**

The Port One Output Connector is a female, panel-mounted receptacle, designed to receive a four pronged male plug attached to the desired light producing appliance. Once activated, it will channel electrical power, modulated by the imposed manually selected or program produced characteristics desired by the operator. There are four such output ports, and they may be commanded to operate in total isolation from one another, or they may be directed to carry exactly the same program signals.

## **Number 11: Port One Indicator Lamp.**

The Port One Indicator Lamp visually demonstrates that Output Port One is in operation. This device is also a panel-mounted RGB-LED, and it will “illustrate”, by means of the color composition that it displays, the exact characteristics carried by the electrical current being delivered to the output channel that it is monitoring. Thus, the operator will have confirmation of his selections, even if the Light Pad or Wand is not plugged in when he checks this indicator.

## **Number 12: Port One Run / Stop Control.**

Port One Run / Stop Control is a momentary contact button. It controls the output disposition of the “channel” to which it is connected. Thus, depressing this switch will either start or stop the action on Output Port One. It will do this without negating the selected features supported by that channel. Accordingly, the operator will always have the option of stopping and starting the device, without re-selecting a program, or readjusting manual settings.

### **Number 13: Port Two Output Connector.**

The Port Two Output Connector is a female receptacle designed to receive a four pronged male plug attached to the desired light producing appliance. Once activated, it will channel electrical power, modulated by the imposed manually selected or program produced characteristics desired by the operator. There are four such output ports, and they may be commanded to operate in total isolation from one another, or they may be directed to carry exactly the same program signals.

### **Number 14: Port Two Indicator Lamp.**

The Port Two Indicator Lamp visually demonstrates that Output Port Two is in operation. This device is an RGB-LED, and it will “illustrate”, by means of the color composition that it displays, the exact characteristics carried by the electrical current being delivered to the output channel that it is monitoring. Thus, the operator will have confirmation of his selections, even if the Light Pad or Wand is not plugged in when he checks this indicator.

### **Number 15: Port Two Run / Stop Control.**

Port Two Run / Stop Control is a momentary contact button. It controls the output disposition of the “channel” to which it is connected. Thus, depressing this switch will either start or stop the action on Output Port Two. It will do this without negating the selected features supported by that channel. Accordingly, the operator will always have the option of stopping and starting the device, without re-selecting a program, or readjusting manual settings.

### **Number 16: Port Three Output Connector.**

The Port Three Output Connector is a female receptacle, designed to receive a four pronged male plug attached to the desired light transducing appliance. Once activated, it will channel electrical power, modulated by the imposed manually selected or program produced characteristics desired by the operator. There are four such output ports, and they may be commanded to operate in total isolation from one another, or they may be directed to carry exactly the same electrical signals.

### **Number 17: Port Three Indicator Lamp.**

The Port Three Indicator Lamp visually demonstrates that Output Port Three is in operation. This device is an RGB-LED, and it will “illustrate, “by means of the color composition that it displays, the exact characteristics carried by the electrical current being delivered to the output channel that it is monitoring. Thus, the operator will have confirmation of his selections, even if the Light Pad or wand is not plugged in when he checks this indicator.

### **Number 18: Port Three Run / Stop Control.**

Port Three Run / Stop Control is a momentary contact button. It controls the output disposition of the “channel” to which it is connected. Thus, depressing this switch will either

start or stop the action on Output Port Three. It will do this without negating the selected features supported by that channel. Accordingly, the operator will always have the option of stopping and starting the device, without re-selecting a program, or readjusting manual settings.

#### **Number 19: Port Four Output Connector.**

The Port Four Output Connector is a female receptacle, designed to receive a four pronged male plug attached to the desired light transducing appliance. Once activated, it will channel electrical power, modulated by the imposed manually selected or program produced characteristics desired by the operator. There are four such output ports, and they may be commanded to operate in total isolation from one another, or they may be directed to carry exactly the same electrical signals.

#### **Number 20: Port Four Indicator Lamp.**

The Port Four Indicator Lamp visually demonstrates that Output Port Four is in operation. This device is an RGB-LED, and it will “illustrate, “by means of the color composition that it displays, the exact characteristics carried by the electrical current being delivered to the output channel that it is monitoring. Thus, the operator will have confirmation of his selections, even if the Light Pad or Wand is not plugged in when he checks this indicator.

#### **Number 21: Port Four Run / Stop Control.**

Port Four Run / Stop Control is a panel-mounted momentary contact button. It controls the output disposition of the “channel” to which it is connected. Thus, depressing this switch will either start or stop the action on Output Port Four. It will do this without negating the selected features supported by that channel. Accordingly, the operator will always have the option of stopping and starting the device, without re-selecting a program, or readjusting manual settings.

#### **Number 22: Power Control Toggle Switch.**

The Power Control Toggle switch is a Double Pole, Single Throw manually operated device. It controls two functions. It applies power from the external low voltage power supply to the internal circuitry, and it changes the disposition of the **power ready / power on lamp**, mounted on the control panel. Thus, the operator can tell at a glance if his device is on or off, and he also knows immediately if source power is available or not.

#### **Number 23: Power On / Off Indicator Lamp.**

The Power On / Off Indicator Lamp monitors the power state of the TLC Spectrabrite™ Clinical Unit. The indicator is a RGB-LED, which is adjusted to provide two separate output colors. If power is available, but the TLC Spectrabrite™ is turned off, then the LED will glow AMBER. However, if the TLC Spectrabrite™ is operational, then the LED will provide a GREEN color. Thus, if electrical power is unavailable for any reason, the LED will be turned off and will appear a milky white color upon visual inspection.

#### **Number 24: LCD Screen Intensity Control.**

The LCD Screen Intensity control is an adjustment knob which allows the TLC Spectrabrite™ operator to manually adjust the intensity or brightness of the display screen.

#### **Number 25: Volume Control; Program End Alarm.**

The Volume Control for Program End Alarm is another adjustment knob which controls the audio intensity of an electronically produced “beep” which alerts the TLC Spectrabrite™ operator that a program sequence has ended. This feature is intended for future use only.

#### **Number 26: Speaker Volume Control.**

The Speaker Volume Control is a feature provided for future use. Eventually, it will be used to adjust the volume of an internal speaker which may provide music, verbal instructions, or other spoken messages.

#### **Number 27: Head Set Volume Control.**

The Head Set Volume control is a feature provided for future use. It may be utilized for adjusting head-set volume.

#### **Number 28: Head Set Output Jack.**

The Head Set Output Jack is a female audio jack which provides a convenient means of attaching and detaching a head set. This device is intended for future use.

#### **Number 29: USP Port, Program Downloads, (Right Hand Side Of Enclosure).**

Each TLC Spectrabrite™ Clinical Unit is equipped with a USB port located on its right side panel. This connector allows the device to be directly connected to a person computer for the purpose of down-loading programs to new machines, up-dating programs, or adding programs. The USB port is directly connected to the internal processor.

#### **Number 30: DC Input Power Connector, (Rear, Left Side, Bottom of Enclosure).**

The DC Power input jack at the rear of the device enclosure affords quick and convenient connection to and disconnection from the external DC supply source which powers the device.

## Section IV- Setting Up Your TLC Spectrabrite™

Your TLC Spectrabrite™ Clinical Unit comes packed in a rugged and protective carrying case. The standard equipment it contains is listed as follows:

- 1.) **Main TLC Spectrabrite™ Clinical Unit.**
- 2.) **External Power Supply.**
- 3.) **Safety Power Cord.**
- 4.) **One or more RBG-LED Light Pads.**
- 5.) **Safety Glasses (2 pair).**
- 6.) **TLC Spectrabrite™ Owner's Manual.**

Carefully unpack your carrying case, and make sure that all of the above items are present. If you are missing any component, notify TLC Health Systems immediately, and report the shortage. TLC Health Systems will act ASAP to provide you with any missing items.

Setting up your TLC Spectrabrite™ is simple and very straight forward. Please follow the next few steps to ready your instrument for operation:

a) Position the Main TLC Spectrabrite™ Unit where you intend to use it, and make sure that the main power switch (Lower Left-Hand Position on the Front Panel) is in the down position. The indicator lamp just above the main switch will appear opaque in color at this time.

b) Locate the external power supply module. This device is a black plastic “box” with a printed name plate upon one surface that reads “AC Adapter: INPUT - 120-240 V-50-60 HZ 1.5A: OUTPUT - 16V - 4.5A - 75 W.”

c) Locate the Safety Power Cord, and insert the female plug into the recessed male receptacle. Then plug the “yellow-ringed” supply jack into the receptacle on the lower rear panel of the TLC Spectrabrite™ Clinical Unit.

**NOTICE: Do not plug the power supply cord into a 120 volt wall socket until after you have connected the power supply line to your Spectrabrite.**

d) Locate a Light Pad, and plug it into an appropriate port on the lower portion of the front panel. Port one is the best initial choice.

e) Finally, plug your Power Supply cord into a 120 Volt AC outlet. You are now ready to proceed. Section V will describe the Start-Up procedure and Self Diagnosis.

## **Section V – Check-Out - Startup and Self Diagnosis TLC Spectrabrite™ Unit**

Starting your TLC Spectrabrite™ Unit is a very simple task, because most of the procedure is completely automatic. Your Unit is equipped with an Arduino Mega 2560-R3 Control Module. This device is an electronic processor, capable of storing and executing 999 separate programs. Accordingly, it is most important for this component to be in perfect operating condition at all times. The Arduino is the very heart of your Spectrabrite, as it controls all non-manual functions. Therefore, because of the importance of this module, it will perform a Self-Check or a Self Diagnosis Routine every time you start up your machine.

Now, turn on your TLC Spectrabrite™, by flipping the main power switch “UP” to the “ON” position. The power indicator LED will immediately change from Amber to Green, alerting the operator to the fact that power is being applied to the internal circuitry.

In sequence, the following set of images will appear on your Liquid Crystal Screen:

<b>LCD Display.</b>	<b>Meaning of Message.</b>
<b>1.) Three rows of twenty black squares Power applied, no data available. Appear on the back-lit screen.</b>	
<b>2.) Millennial Technologies Oklahoma City, Oklahoma</b>	<b>Processor Active - Diagnosis On-going.</b>
<b>3.) Pain Therapy - Tesla.</b>	<b>Default Program - Diagnosis Complete.</b>

**Your Spectrabrite is now ready for use. Pain Therapy - Tesla, is your Default Program.**

### **Indications of a Failed Start-Up.**

After having followed all of the previous steps, should you observe either of the following symptoms, your TLC Spectrabrite™ Clinical device has an internal problem and should be returned to your dealer for immediate repair or exchange:

- 1.) No Black Squares appear on the view screen, but the back-screen is lit, check knob # 24**
- 2.) An error code is presented instead of your Default Program.**

Any Error Codes presented upon your LCD screen should be recorded and reported to your distributor. Error codes will have no meaning to individuals using the TLC Spectrabrite™ unit.

## Section VI - Operating Your TLC Spectrabrite™ Clinical Unit

The TLC Spectrabrite™ Light Therapy Device has been engineered for both **Ease of Operation** and **Accuracy in Executing Commands**. Research and experience over the years have dictated that two modes of operation must exist in order for these two basic maxims to be upheld. Some operators prefer the speed, accuracy and flexibility of an automatic system, while other operators prefer the ability to pick and choose their treatment characteristics. TLC Spectrabrite™ will allow either mode of operation.

### Ease of Operation

No electronic device is absolutely simple to operate. Most electric devices require a brief learning curve, and so does TLC Spectrabrite™. However, this learning effort is no more strenuous than mastering the use of a modern cell phone or a DVD player. There are only a few basic control features to become familiar with, and many of them are actually repetitive. Once the user realizes this, intimidation is immediately dispelled, and ease of operation is quickly achieved.

Experience has demonstrated that learning the TLC Spectrabrite™ is greatly accelerated when the vital control issues are broken down by function first. The following is a list of the most important control features which the operator should understand from the outset:

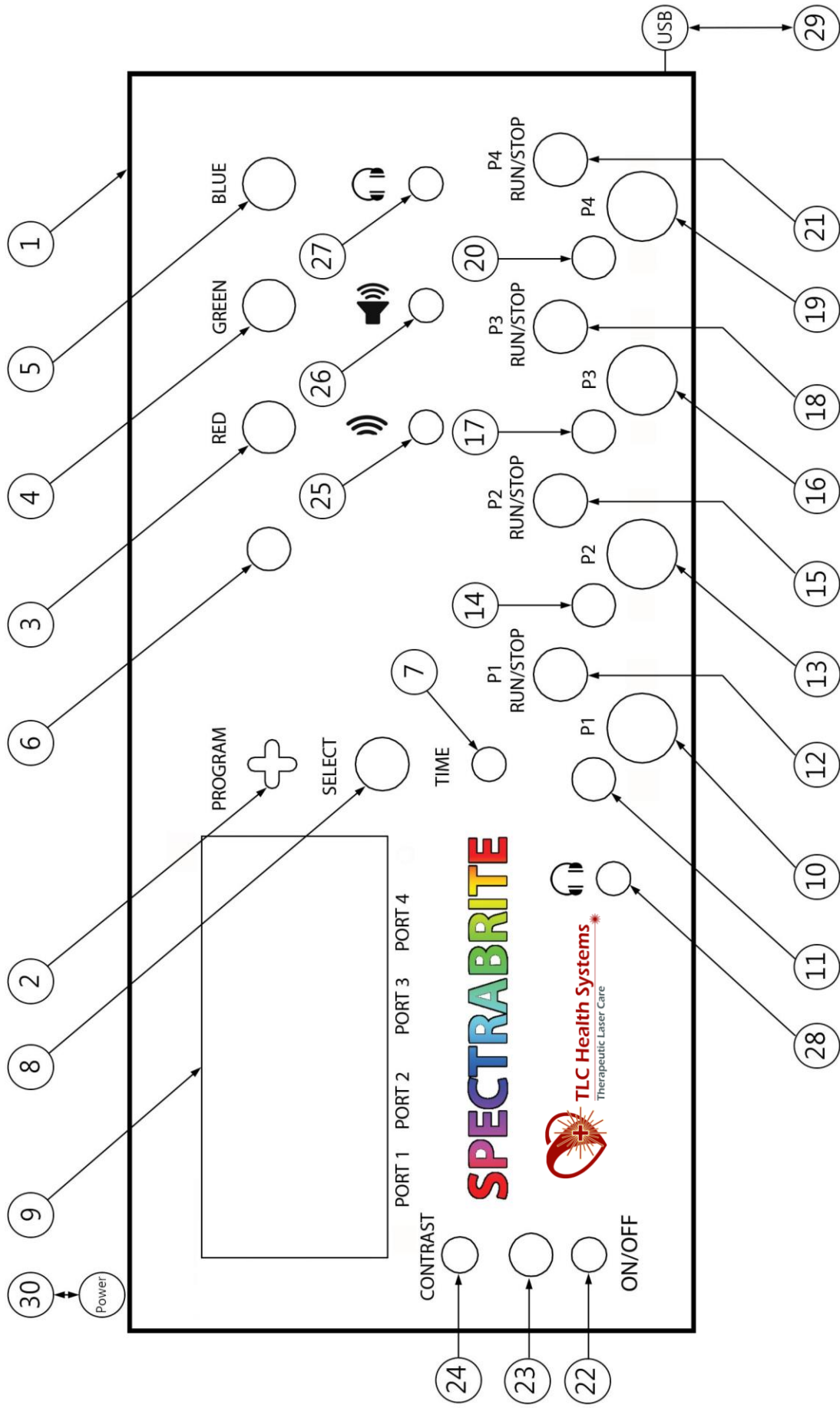
- 1.) Power ON / OFF Switch .....# 22 on the console diagram.
- 2.) Program Joy Stick .....# 2 on the console diagram.
- 3.) Program Select Button.....# 8 on console diagram.
- 4.) Manual Color intensity .....#’s 3, 4, and 5 on console diagram.
- 5.) Manual Time setting.....# 7 on console diagram.
- 6.) Channel RUN / STOP Button .....#’s 12, 15, 18 and 21 on console diagram.

Most of the other features are simply indicator lights and rarely used control features. All existing TLC Spectrabrite™ functions will be completely explained in the following sections.

### Accuracy in Executing Commands

Our collection of stored programs has been supplied with various characteristics which necessitate considerable accuracy if the TLC Spectrabrite™ is to be of maximum benefit to the user. Such parameters as repetition rate, light frequency, and timing fall into this category. Imagine the difficulty that would be presented to the user if he was expected to select, combine and accurately implement such settings manually; no two individuals would ever achieve the same results. Therefore, all such critical selections and combinations are automatically performed by the Arduino Processor, which delivers each selected program with 100% accuracy.

Figure #1





## Section VII - Manual Mode Operation

Operating your TLC Spectrabrite™ in the Manual Mode is quite simple. Just follow the basic steps outlined below, and you will arrive at the Manual Mode platform. Once at this position, the section on Manual Operation will guide you through all the necessary control features.

**Step One : Activate your TLC Spectrabrite™ by turning on the Main Power Switch.**

**Step Two : Allow the machine to go through its Self-Diagnostic Procedure.**

**Step Three : Check your view screen for the title “Pain Therapy - Tesla.”**

**Step Four : Refer to the following section on Manual Mode Operation.**

### **Manual Mode Operation.**

After following the above Four Steps, the Arduino Processor will automatically default to “Program # 1” in the Select Program Mode. In order to operate in the manual Mode, please follow Steps Five through Eight.

**Step Five : Selection of Manual Operation.** Locate the Joy Stick Control ( 2 ) on the main panel, just to the left of the LCD Screen ( 9 ). Lift the Joy Stick and release. The LCD Screen will respond with a display of variables for “Manual Mode, Port 1,” and the Manual Mode indicator lamp ( 6 ) will illuminate. Color selection and Intensity settings may now be manually installed for each desired output color.

**Step Six : Installing Settings.** A list of numbers will appear on the LCD Screen, which shall be, from left to right, 0.....R0.....G0.....B0. These settings indicate, in order of their appearance, Running Time for Output Port #1, Intensity setting for the Red LED, Intensity Setting for the Green LED, and the intensity setting for the Blue LED. Each of these parameters are controlled by a corresponding adjustment knob on the main panel; The Time adjust knob (7) will allow settings from 1 minute to 30 minutes. The Red intensity control knob (3) will allow intensity settings from 0 to 255, where 0 means no light, and 255 means maximum intensity. Now you may set each control adjustment to the desired level, Time, Red, Green, and Blue.

**Step Seven : Confirm Settings, Select Output and Run.** Once the desired settings are installed, they are confirmed by pressing the Select Button (8), and down-loaded to Output Port 1, by depressing the RUN button (12) for Port 1, and then starting the session by pressing RUN a second time.

**Step Eight : Return to the Manual Mode.** Lifting the Joy Stick twice and releasing it will return you to Manual Mode.

## Section VIII - Program Mode Operation

Operating your TLC Spectrabrite™ Clinical Unit in the Program Mode is almost as simple as operating it in the Manual Mode. Essentially, the first three steps are the same as in Manual Mode, and they have been repeated for your convenience below. Once step three has been completed, the remaining steps will guide you through the stages of program selection and execution.

**Step One : Activate your TLC Spectrabrite™ by turning on the Main Power Switch.**

**Step Two : Allow the machine to go through its self-Diagnostic Procedure.**

**Step Three : Check your view screen for the title “Pain Therapy - Tesla.”**

**Step Four : Refer to the following section on Program Mode Operation.**

After following the above Four Steps, the Arduino Processor will automatically default to “Program # 1” in the Select Program Mode. If this is the program that you want to run, then you have arrived at your destination. If not, then please proceed to Step Five.

**Step Five: Program Selection.** Having advanced through the above mentioned steps, the operator will arrive at the default **Pain Therapy - Tesla**. If this program is to be run on Port One, the **Joy Stick (2)** is pressed down and released. This action will prepare the default program for application to the Port One receptacle. Pressing the **Select Button (8)** at this point, will confirm the selection, and then depressing the **RUN Button (10)** for Port One, will deliver the program to the output appliance. However, if the operator desires to access a different program, then he must return to, or remain in, the Program Select Mode, and manipulate the Joy Stick ( 2 ) in a right and left motion to select a different program. Once the desired program is located, then the Joy Stick is depressed vertically to prepare the program for delivery, and the choice is made by pressing the Select Button (8).

**Step Six: Selection of Output Port.** As mentioned above, the desired output port is also selected with the Joy Stick (2). Operating from the Program Select level, simply lift the Joy Stick vertically once, and release it. This will transport the operator to the **Port Select Level**. Arrival at this location will be indicated by the appearance of a P1 in the upper left hand corner of the LCD Screen. At this point, the Joy Stick may be used in a right and left direction to step through all four Output Ports. Upon reaching the desired Output Port, the operator will repeat Step Five to make a Program Selection, and down-load same to the output port of his selection.

This concludes the section on Program Mode Operation. Surely, the reader can now see, that this section, and the previous section describing the Manual Mode Operation, are quite simple, and can easily be mastered with a bit of patience and some practice on your TLC Spectrabrite™ Clinical Unit.

## Section IX - TLC Spectrabrite™ Light Pads

Please refer now to Figure #2 on page 21. This is a picture of a standard Light Pad used for light therapy. Note that the structure is housed in a metal case, with a powder coating finish. The light-emitting surface is composed of a white semi-reflective plastic, which holds and positions 54 RGB - LEDs. These are the Light-Emitting Diodes which receive power from your Main TLC Spectrabrite™ Clinical Unit by means of the connecting cable.

These LEDs are very bright electronic devices, and they all operate together, thus producing an optical flux of considerable intensity. This degree of Light-Power is necessary to ensure the delivery of optimal Energy and Frequency to the tissues of the body, but is not powerful enough to damage the eyes during accidental exposure. **However, as a precautionary measure, the operator is encouraged to wear the safety glasses provided with your TLC Spectrabrite™ Clinical Unit kit.**

The connecting cable which is supplied with your Light Pad, is approximately 72 inches long, or 6 feet in length. This length should be sufficient for comfortably applying your Light Pads to any location on the body. Said cables are made from a tough oil-resistant form of rubber which is resilient and quite safe and flexible. But, please remember to always insert and remove your cable connector plug, by holding the plug itself. Never remove the plug from the main console by yanking on the cable. **Such action will eventually damage your cable and will result in a failure of the Light Pad.**

Your TLC Spectrabrite™ Clinical Unit will provide enough power to support four standard Light Pads. One or more Light Pads are supplied with each TLC Spectrabrite™ kit. But, additional pads can be purchased separately. Contact your dealer for details.

Your TLC Spectrabrite™ Clinical Unit Pads must be connected to ports one through four, (P1-P4) and your Clinical Unit can be instructed to operate these Pads in a variety of ways. **Refer to Sections VII and VIII for complete details.**

Caution: If your Light Pad should stop functioning, or if a number of LEDs cease to operate, please stop using your machine and contact your dealer. **Continued operation with a faulty Light Pad may damage the electronic control circuitry in your Spectrabrite Unit.**

## Section X - TLC Spectrabrite™ Clinical Unit Light Wands

Please refer now, to Figure #3 on page 21. These are pictures of a standard TLC Spectrabrite™ Light Wand. Light Wands are used for situations in which a narrow beam of light is required to be directed to a specific region of the body, in order to begin therapy and deliver dozens of our exclusive patent pending health protocols.

Each Light Wand is a completely self-contained unit, comprised of a single LED, a current limiting resistor, a plastic container, and a quartz light-delivery pipe. The entire unit is situated within a water-proof, heat shrunk plastic jacket to ensure safety and sanitary operating

conditions. These Light Wands can be washed with a mild soap and water solution after use, and should then be patted dry with a cotton cloth or towel.

Each Light Wand is color-coded, and also has a color identifying tag located near the base of the wand. The following is a list of the wand colors now available.

- |                                    |                               |                      |
|------------------------------------|-------------------------------|----------------------|
| 1.) <b>R.B.G. = Tri-Color Wand</b> | 5.) <b>Amber.</b>             | 9.) <b>Infrared.</b> |
| 2.) <b>Red.</b>                    | 6.) <b>Ultra Violet (UV).</b> |                      |
| 3.) <b>Green.</b>                  | 7.) <b>Orange</b>             |                      |
| 4.) <b>Blue.</b>                   | 8.) <b>Magenta</b>            |                      |

With the exception of the Tri-Color Wand, each Light Wand will only emit one specific color of light. For the selection and use of each specific color, please refer to Section XI - Explanation of Protocols.

The connecting cable which is supplied with your Light Wand is approximately 72 inches long, or 6 feet in length. This length should be sufficient for comfortably applying your Light Wands to any location on the body. Said cables are made from a tough oil-resistant form of rubber which is resilient and quite flexible. But, please remember to always insert and remove your cable connector plug, by holding the plug itself. Never remove the plug from the main console by yanking on the cable. **Such action will eventually damage your cable and will result in a failure of the Light Wand.**

Your TLC Spectrabrite™ Clinical Unit will provide enough power to support four standard Light Wands. Light Wands are not supplied with your TLC Spectrabrite™ kit. But, can be purchased separately. Contact your dealer for details.

**Caution:** If your Light Wand should stop functioning, please unplug your Wand immediately and contact your dealer. **Continued operation with a faulty Light Wand may damage the electronic control circuitry in your TLC Spectrabrite™ Clinical Unit.**

## Section X : Warranty and Repairs

### LIMITED WARRANTY

**Your TLC Spectrabrite™ Clinical power unit is warranted against defective material and workmanship, under normal operating conditions. This warranty period is for one year beginning on the date of purchase by the original purchaser. Please retain proof of purchase receipt and include a copy when applying for warranty service. Attachments to the TLC Spectrabrite™ carry a lifetime repair service charge of \$50.00 per wand and \$100.00 per pad plus S & H. This service charge covers all repairs to attachments.**

**Warranty claims must be made by calling TLC customer service at:**

**TLC Health Systems, P.O. Box 264 Westfield, IN 46074**  
**Phone: 317-804-1803 Email: [info@tlchealthsystems.com](mailto:info@tlchealthsystems.com) and Website: [www.tlchealthsystems.com](http://www.tlchealthsystems.com)**



**TLC Health Systems**

*Innovators in Focused Light Therapy*

*Pain Relief and other Health Benefits at the Speed of Light – Patent Pending – Scientifically Engineered*

Plug light pads and/or wands into Spectrabrite™ unit as needed. Each has a special purpose. Doctors and/or researchers may desire to utilize the preprogrammed frequencies or program their own light colors manually (see following pages 22-27).

### Light Pads



### Light Wands



**Section XI : Quick Start Programing – TLC Focused Low Level Light Therapy – (LLLT)**

Various light frequencies have numerous positive benefits to the human body's overall well-being. NASA discovered that light helps the body heal faster, causing the immune system to perform at an optimal level, and addresses many other health challenges. Medical application of light for neonatal infants diagnosed with jaundice has been in effect for many years. Light is also used regularly in dialysis to keep any unwanted pathogens out of the body. SAD is the name given the disorder when humans are deprived of light on a regular basis.

Armed with this information TLC Health Systems and MHS set out to develop a multi-functional and affordable system to assist doctors and families in their need to manage pain and stay healthy. So how do we do it? We have developed the **SPECTRABRITE™ LED Focused Light Therapy** (LLLT) device and programmed it with several frequencies to help assist the delivery of certain light frequencies to the body in a beneficial way through "light pads." Our RGB LED focused light technology provides an infinite number of color frequencies combinations. In addition we are able to pulse these frequencies to gain deeper penetration into the skin for more lasting relief. **TLC pulsed light will penetrate up to 3 times deeper than normal light.** When properly administered light therapy has been shown to:

- |   |  |
|---|--|
| . Reduce Pain                           | Increase APT production in the Body    |
| . Reduce Inflammation                   | Help Heal Acne                         |
| . Increase Collagen Production          | Boost the Immune System                |
| . Increase Blood Flow to Damaged Tissue | Helps reduce aging, wrinkles and scars |

Simply place pad or wand on areas that needs attention. Since it is just "light," there's nothing to cause pain, heat, noise, or side effects, however please use extreme caution, while we have never received a notice of negative or harmful side effects from the utilization of our technologies please use extreme caution whenever a person who is subject to epilepsy seizure is in the same room while one of our TLC Spectrabrite™ products is being used, if they are present cover their eyes completely. Our **eleven (11) pre-programmed** basic therapies are already programmed with all our proprietary health protocols; any one of the 11 may do the job. NO need to wait, select say **#1. Pain Therapy Tesla** place pads/wands and turn unit on.

1. **Pain Therapy Tesla - Pre-Programmed** (the default mode for each port) – Uses red and blue light frequencies that alternate through a series of pulses that were researched by Tesla. These have been reported to help relieve pain in muscles and joints.
2. **Stress Therapy - Pre-Programmed** – Begins with a red that slowly blends to blue and back to red. The slow change allows for the delivery of all colors from red to blue and back. This soothing effect has been reported as having a relaxing effect on tight muscles.
3. **Pain Therapy - Pre-Programmed** – This amber color is pulsed at 528 times per second. Pulsing at this speed is not detectable by the human eye, but this frequency is said to have positive benefits on the healing properties of the body.
4. **Wound Care Basic - Pre-Programmed** – We named this wound care because many have reported to us that their wounds heal faster with the application of this program.
5. **Spectra Schuman - Pre-Programmed** – Schuman did a great deal of research on the positive effects of frequencies on the body. This program pulses two different Schuman frequencies at 6 different color bands and is for a wide variety of light deliveries.
6. **Red Basic - Pre-Programmed** – It has been reported by doctors and their customers that Red Basic and/or Red Manually Programmed assisted in weight loss in their pant and/or

dress sizes. Our customers also report bug bites stop itching quickly when the red light is applied and that skin conditions appear to have a positive response to red.

7. **Amber Basic - Pre-Programmed** – Clients report relief from muscle cramps and spasms
8. **Green Basic - Pre-Programmed** Seems to have dis-infective and germicidal properties.
9. **Aqua Basic - Pre-Programmed** – Reports of positive response in skin tone.
10. **Blue Basic - Pre-Programmed** – Acne is reported to respond well to blue. There is also a calming effect that has helped some of our customers fall asleep faster.
11. **Magenta Basic - Pre-Programmed** – Also reports of sleep improvement. Appears to be a vasodilator (opens up blood vessels) which reduces pain levels.
12. **UV and Magenta Wands** together under tongue, both set on default, increases immunity.

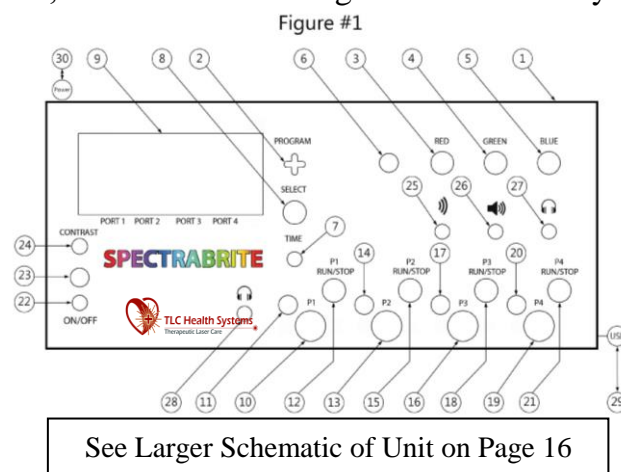
**START QUICKLY - TURN ON UNIT - PLACE 4 PADS ON INJURIES and Push Buttons 12, 15, 18, 21.** You're now instantly treating four injured areas automatically in the default setting mode called **(#1 Pain Therapy Tesla, this is the most widely used setting)**. Or choose from any of 11 pre-programmed settings. (Note: Program/Joystick is #2 on Schematic pg 16. See more details on page 23-24; always read the screen #9 to see what you are programing):

**Program with Joystick:** (1) Scroll  $\leftrightarrow$  to the port (P1, P2, P3, P4) you desire; (2) scroll  $\downarrow$ ; (3) scroll  $\leftrightarrow$  to program what you want for that port; (4) push SELECT button  $\bigcirc$  one time; scroll  $\uparrow$  which exits programming for that port. Now, begin with Step (1) above again to set next desired port, when you have programed all ports you desire, begin treatment by pushing buttons 12, 15, 18, 21. **NOTE:** To reset to default #1 Pain Therapy turn off /on, place pads and push buttons 12, 15, 18, 21.

**MANUALLY DIAL IN CUSTOM COLORS – QUICK and EASY DIRECTIONS:** See Schematic pages 16 or 24, using your TLC Unit dial in exact colors desired on knobs #3 (red), 4 (green) and 5 (blue). See exact details on how to manually dial in custom colors pages 25 thru 28:

**Program with Joystick:** (1) Scroll  $\leftrightarrow$  to desired port (P1, P2, P3, P4); (2) scroll  $\downarrow$  (3) scroll  $\leftrightarrow$  to Manual Mode; scroll  $\uparrow$  and dial in desired colors below and pages 26-28 by using the RGB (red, green, blue) knobs: #3 (red), 4 (green) and 5 (blue) to achieve the number combination of your choice chosen from (RGB chart below); push SELECT  $\bigcirc$ ; scroll  $\uparrow$  to exit programming go to next desired port and repeat steps and/or begin treatments by pushing buttons 12, 15, 18 and/or 21. **NOTE:** To reset to default #1 Tesla Pain Care mode turn unit off and on. Once you've manually dialed in settings there's no auto shut off time for Custom Colors, so determine the length of time and set your timer.

RGB Chart	= RED	GREEN	BLUE
Scarlet	= R-255	G-0	B-45
Magenta	= R-255	G-0	B-85
Purple	= R-80	G-0	B-255
Violet	= R-95	G-21	B-255
Indigo	= R-115	G-0	B-160
Blue	= R-15	G-0	B-255
Turquoise	= R-10	G-62	B-170
Green	= R-0	G-255	B-17
Lemon	= R-255	G-105	B-0
Yellow	= R-255	G-167	B-0
Orange	= R-255	G-55	B-0
Red	= R-255	G-0	B-10



**HOW TO - MANUALLY DIAL IN CUSTOM COLORS:** See Body Chart Areas (#1 through #25) on page 27. Choose the body part Area numbers you wish to treat patient with according to custom color program below by selecting the color that best fits your patient's needs, then manually dial in specific color necessary following "DIRECTIONS TO MANUALLY DIAL CUSTOM COLORS" on page 23, once done, place pads, set timer and turn on. We recommend all Laymen seek medical advice (e.g. physician, chiropractor, acupuncturist, clinics, etc.) This detailed color spectrum below tells how 12 specific colors reportedly do positive things for body when used on Areas (#1-25).

**SCARLET** For this exact color dial in these numbers (**R-255, G-0, B-45**) see how on page 23.

Adrenal stimulant – increases functional activity of the arteries areas #16-22-23-24-25

Renal (kidney) and adrenal energizer – having to do with the kidneys area #16-18-22-23-24-25

Emotional stimulant, builds sex powers by increasing sensitivity and desire when deficient areas #11-16-22-23-24-25. Stimulates the reproductive system, and menstrual function (emmanmagogue) areas #11-16-22-23-24-25

Arterial stimulant; Vasoconstrictor – raises blood pressure by: areas #16-22-23-24-25

Constricting the blood vessels areas #16-22-23-24-25

Increases heart rate, areas #4-5-16-22-23-24-25

Stimulates activity of the kidneys and adrenals, areas #16-18-22-23-24-25 both sides and the chromaffin system, systemic front and back areas #16-18-22-23-24-25

**MAGENTA** For this exact color dial in these numbers (**R-255, G-0, B-85**) see how on page 23.

Suprarenal Stimulant – adrenal (sits on top of kidney) controls heart rate, blood pressure, secretes steroids a hormone to control levels of sodium and potassium in blood, helps regulate sugars areas #4-5-16-18-22-23-24-25

Builds and equilibrates the functional activity areas #4-5-16-18-22-23

Cardiotonic – heart areas #4-5-16-18-22-23

Blood circulatory system areas #4-5-16-18-22-23-24-25

Kidneys and adrenals, area #18 and the chromaffin system, systemic front and back

Reproductive system, areas #4-5-10-11-16-18-22-23-24-25

Emotional equilibrator and auric builder, systemic front areas #4-5-10-11-16-18-22-23-24-25

Anti-arrhythmic areas #4-5-10-11-16-18-22-23-24-25

Cardiac energizer areas #4-5-10-11-16-18-22-23-24-25

**PURPLE** For this exact color dial in these numbers (**R-80, G-0, B-255**) see how on page 23.

Venous stimulant – increases functional activity of the veins areas #4-5-16-18-22-23-24-25

Renal depressant (kidney and adrenal depressant, areas #4-5-16-18-22-23-24-25

Antimalarial – controls fever and high blood pressure in malaria and recurrent fevers

Vasodilator – lowers blood pressure by dilating blood vessels areas #4-5-16-18-22-23-24-25

Anaphrodisiac – emotional and reproductive system depressant. Builds sex powers by decreasing sensitivity and desire when these systems are in excess usage areas #4-5-10-11-16-17-18-22-23-24-25 Narcotic, hypnotic areas #4-5-10-11-15-16-17-18-22-23-24-25

Antipyretic – reduces fever or quells it. areas #4-5-10-11-15-16-17-18-22-23-24-25

Analgesic - reduces any need for using Analgesic and their side effects

Soporific – decreases sensitivity to pain - Induces relaxation and sleep areas #4-5-10-11-15-16-17-18-19-22-23

Reduces blood pressure by reducing the heart rate areas #4-5

Reduces blood pressure by decreasing activity of the kidneys and adrenals, area #18-19 and chromaffin system, systemic front and back area #9-10-18-19

Lowers body temperature areas #9-10 then #4-5-11-15-16-17-18-19-22-23-24-25

Moderates blood pressure between heart and lungs, areas #4-5-16-17

Controls lung hemorrhages, some cases may respond better to Magenta or Scarlet (use heart/respiration rate as a guide. When in doubt, try Purple first. Also applies to cases of dry coughing (coughing without production of phlegm) areas #4-5-16-17



**VIOLET** For this exact color dial in these numbers (**R-95, G-21, B-255**) see how on page 23.

Splenic builder and stimulant **area #6-22-23-24-25**

Cardiac depressant – decreases muscular activity, including the heart muscles

Lymphatic glands depressant, systemic front. Pancreas depressant, **areas #6-7-8-9-18**

Motor depressant **areas #6-7-8-9-18-22-23-24-25**

Leucocyte builder **areas #6-7-8-9-18-22-23-24-25**

**INDIGO** For this exact color dial in these numbers (**R-115, G-0, B-160**) see how on page 23.

Parathyroid stimulant – regulates calcium, located behind thyroid **area #2-3-16-17-22-23-24-25**

Thyroid depressant **area #2-3-16-17-22-23-24-25**

Respiratory depressant **areas #2-3-4-5-16-17-22-23-24-25**

Astringent, antipyric, antiemetic, hemostatic – causes contraction, controls abscesses, lessens secretions, arrests discharges and hemorrhages **areas #6-7-8-9-10-11-18-19-22-23-24-25**

Sedative – eases suffering, lessens excitement and over-activity

Pain reliever apply **directly to area of need** and also **areas #16-22-23-24-25**

Hemostatic – deals with blood clotting and vascular system **areas #16-22-23-24-25**

Phagocyte builder – Greek meaning “eats” or “devours” – cells that engulf particles such as bacteria and microorganisms **areas #16-22-23-24-25**

Lactifuge – mammary depressant - reduces milk production **areas #4-5-16-22-23-24-25**

**BLUE** For this exact color dial in these numbers (**R-15, G-0, B-255**) see how on page 23.

Antipruritic demulcent – relieves itching and irritations of abraded surfaces – acute dermatitis at uncovered areas of skin **directly on area of need** also **areas #16-22-23-24-25**

Diaphoretic – encourages perspiration, extreme sweating as a result of stress, pain, lack of oxygen or sugars in blood, fear **directly on area of need** and also **areas #16-22-23-24-25**

Febrifuge, antipyretic, antiphlogistic – mild sedative. Reduces or removes fever and inflammation. Counter irritant **directly on area of need** and also **areas #16-22-23-24-25**

Pineal stimulant **area #1**, builds vitality and also **areas #16-22-23-24-25**

Anodyne – soothing agent, allay, becalm, calm, compose, lull, quiet, still, medicate

Demulcent. Vitality builder **directly on areas of need** and also **areas #16-22-23**.

**TURQUOISE** For this exact color dial in these numbers (**R-10, G-62, B-170**) see how on pg 23.

Cerebral depressant – **areas #1-15** and also **areas #16-22-23-24-25**

Equilibrator after extended use of infra-Green tonations **areas #1-15** also **areas #16-22-23-24-25**

Skin tonic and builder – rebuilds skin (antipyretic) **areas #1-15-16-22-23-24-25**

Produces a favorable change in the processes of nutrition and repair in recent disorders (acute alterative) **areas #1-15-16-22-23-24-25**

**GREEN** For this exact color dial in these numbers (**R-0, G-255, B-17**) see how on page 23.

Cerebral equilibrators, **areas #1-15**. Physical equilibrators, systemic front Pituitary stimulant – main endocrine gland, sometimes called the master gland. It controls growth and other glands **areas #1-2-3-15-16**

Disinfectant, antiseptic, germicide, bactericide, detergent – destroys microorganisms, germs, bacteria, cleanses and prevents decay, Stimulates the rebuilding of muscle and tissues **areas #6-7-8-9-10-11-16-17-18-19-22-23-24-25**

**LEMON** For this exact color dial in these numbers (**R-255, G-105, B-0**) see how on page 23.

Cerebral stimulant – **areas #1-15-16** Physical equilibrators, systemic front

Thymus activator – organ located in upper chest behind breast bone in front of lower neck – forms immune cells called T lymphocytes **areas #4-5-16-17**

Antacid - Antiscorbutic – scurvy **areas #6-7-8-9-10-11-12-16-17-18-19-22-23-24-25**

Laxative – mildly stimulates digestive system **areas #6-7-8-9-10-11-17-18-19-22-23-24-25**

Expectorant – promotes coughing to expel mucus and fluids from the lungs and air passages **areas #2-3-4-5-16-17**

Bone builder – phosphorus effect **areas #6-7-8-9-10-11-12-16-17-18-19-22-23-24-25**

Anti-arrhythmic – rapid rhythm of the heart **areas #2-3-4-5-16-17-22-23-24-25**

Produces a favorable change in the processes of nutrition and repair in persistent disorders (chronic alterative)

Dissolves blood clots **areas #6-7-8-9-10-11-16-17-18-19-22-23**

Equilibrator after extended use of ultra-Green tonations **areas #16-17-18-19-22-23-24-25**

**YELLOW** For this exact color dial in these numbers (**R-255, G-167, B-0**) see how on page 23.

Motor stimulant – the motor nervous system which energizes the muscles **areas #15-16-22-23-24-25**

Alimentary tract energizer – digestive tract or gastrointestinal tract **areas #22-23-24-25**.

Lymphatic activator – tissues, organs including bone marrow, spleen, thymus and lymph nodes **areas #16-17-18-19-22-23-24-25**

Fights infection and disease **areas #16-17-18-19-22-23-24-25**

Splenic depressant – equilibrator in melancholia, balances **areas #6-7-8-22-23-24-25**, through the portal circulations **areas #6-7-8-9-10-16-17-18-19-22-23-24-25**.

Digestant **#6-7-8-9-10-11-16-17-18-19-22-23-24-25**

Cathartic – constipation, increase bowel movements, **areas 6-7-8-9-10-11-18-19-22-23-24-25**

Cholegogue – stimulates the intestines, pancreas and production of digestive fluids – bile, hydrochloric acid, etc... **areas #6-7-8-9-10-11-18-19-22-23-24-25**

Anthelmintic – expels worms and parasites **areas #6-7-8-9-10-11-18-19-22-23-24-25**

Nerve Builder – nerve builder for sensory and motor system **areas #1-2-3-15-16-22-23-24-25**

**ORANGE** For this exact color dial in these numbers (**R-255, G-55, B-0**) see how on page 23.

**Respiratory stimulant** – deals with lungs and breathing **areas #3-4-5-17-22-23-24-25**

Parathyroid depressant **area #3-22-23-24-25**

Thyroid builder – stimulant, **energizer area #2-3-22-23-24-25**

Antispasmodic – relieves cramps and muscle spasms **areas #16-17-18-19-22-23-24-25**

Galactagogue – stimulates mammary glands to increase milk production **areas #4-5-22-23-24-25** Antirachitic – bone builder, corrects bone softness such as rickets by calcium effect.

Emetic – assists vomiting when stomach contains unsuitable matter, **areas #6-8-22-23**

Carminative – relieves flatulence or gas in digestive tract, **areas #6-7-8-9-10-18-19-22-23-24-25** Lung builder **areas #4-5-17-22-23-25**

Stomachic – stomach stimulant **areas #6-7-8-9-18-19-22-23-24-25**

Tissue stimulant, decongestant **areas #1-4-5-15-16-22-23-24-25**

**RED** For this exact color dial in these numbers (**R-255, G-0, B-10**) see how on page 23.

**Sensory stimulant** – energizes the senses: sight, hearing, touch, taste and smell **areas #1-4-5-15-16-22-23-24-25** Liver energizer **areas #6-7-8-9-10-11-18-19-22-23-24-25**; Counter

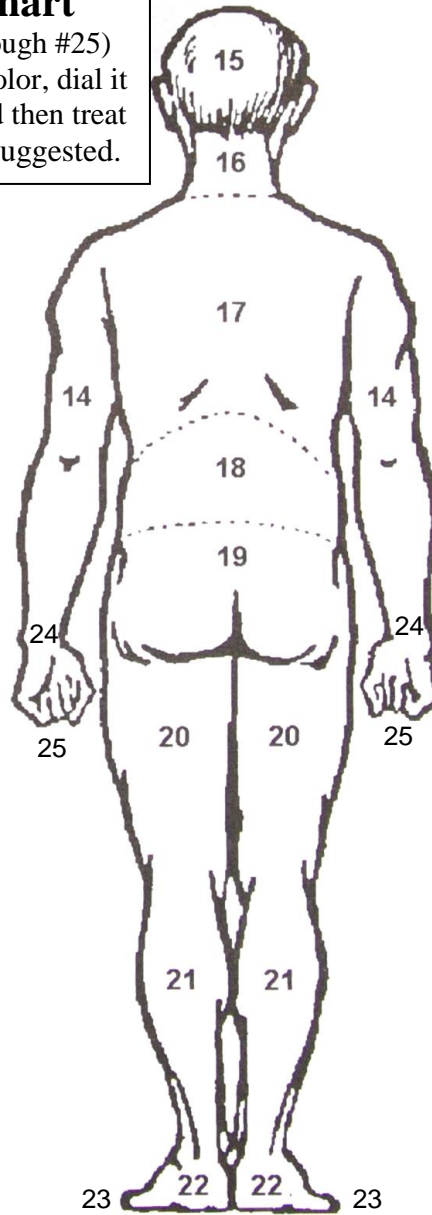
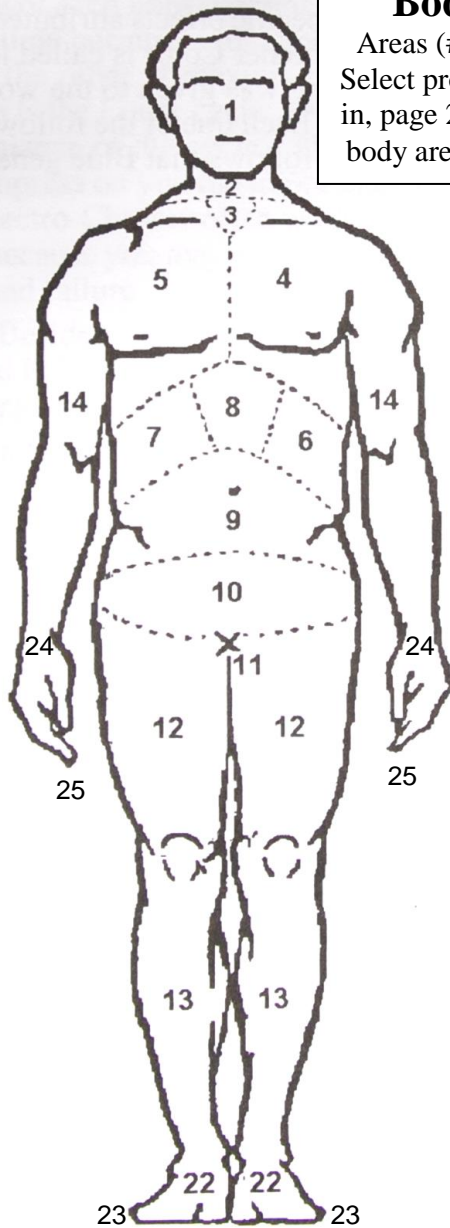
agent for burns from x-rays, ultra-violet, etc. Vesicant – tissue blisters, itching, pimples until the internal cleansing process is completed (Irritant) **areas of direct need and #1-6-7-8-9-10-11-18-19-22-23-22-23-24-25**

Rubefacient Hemoglobin builder – deals with hemoglobin in the blood – builds platelets.

**Fat Cell Reduction** – **areas #2-4-9-10-11-12** it's been reported by applying four pads to **areas #9-10** two on each side of belly button for 30 minute, then apply one pad on inside of each leg areas #11 and 12 (up by groin) for 15 – 30 minutes so fat cells now loosed can flush out of body. Works best when eating a healthy diet + drinking lots of water.

## Body Chart

Areas (#1 through #25)  
Select proper color, dial it  
in, page 23, and then treat  
body area #'s suggested.



### Area# Organ or Structure:

- . 1 Pituitary, pineal, brain (front)
- . 2 Neck
- . 3 Thyroid, parathyroids
- . 4 and 5 Lungs, heart, thymus  
(female – mammaries)
- . 6 Spleen
- . 7 Liver (also #8); gall bladder
- . 8 Stomach (also area #6),  
pancreas (front)
- . 9 Intestines (also area #10)
- . 10 Bladder, appendix, internal  
reproductive
- . 11 External reproductive

### Area# Organ or Structure:

- 12 Thighs
- 13 Shins
- 14 Arms
- 15 Brain (back)
- 15-19 Spine, spinal cord
- 16 Nape of neck
- 17 Lungs (back)
- 18 Kidneys, adrenals, pancreas, (back)
- 19 Rectum, buttocks
- 20 Back of thighs
- 21 Calves
- 22 & 23 Feet, Toes (pads on feet, toes and also attach to wrists)
- 24 & 25 Wrists, Hand and finger tips on wrists for many things

## Section XII: Testimonials

*These testimonials below and many more will be signed and witnessed and held on file at our TLC home office*

### **Just A Few Testimonies from People Who Have Used Our TLC Spectrabrite™ by TLC Health Systems**

**Diabetic** – My feet swell up and hurt very badly and I cannot walk if I eat too much salt. One night we're out for dinner the food contained too much salt and by the time I got home I could hardly walk and in pain. I put the Disk on one foot before bed time and on the other foot while I slept. I woke up totally healed the next morning, no pain or swelling. *Lance*

**Hernia** – I was in much pain, I used the Disk everyday possible on my belly, holding disk in place with an Ace Bandage and my batteries lasted about 12 hours before replacing. Everything is back in place somehow and No more pain. *Karen T.*

**Pneumonia** – I get very sick at least once each year, coughing, fever, sore throat, aches and pains to the point of being bed ridden with Pneumonia, I know these symptoms all too well. I was getting worse, fever, lungs filling up, etc. so I put the disk on my throat fastened with an Ace Bandage and went to sleep. I woke up totally healed the next morning. My whole family at one time or another is using our Disk, and now we have a Wand too, almost 24 hours a day now. *LJ*

**Back Pain** – For 3 ½ years I have suffered with back pain with no relief. I never took pain killers because I did not want to get hooked, so I toughed it out to no avail, until one day a man said here put this disk on your back where the pain is, lean back in your chair while you work, 20 minutes later my pain was gone. I strap the disk on my body in different places and sleep with it on all night, and honestly I have not felt this good for years, it is wonderful. *Carolyn L.*

**M.S. Multiple Sclerosis** – My friend's sister, she suffered in pain with M.S. for years, unable to stand up and walk. So, I told her to use this TLC-Wand on her sister. She did on her back for 1 hour the first day, starting from the top of her spin down to the tail bone and back up again and then back down both sides of the spine and she did so each day thereafter for an hour or longer if possible. Her sister literally stands up on her own now and walks with assistance. *Dave W.*

**Arthritis** – My hands have become so stiff over time that I can hardly use them and I have constant pain. A friend said hey, hold this disk in your hand and see if your pain goes away, and I said for how long, he said I don't know, I guess until the pain goes away. 20 – 30 minutes later my pain was gone so I switched hands. I use it every day for preventative maintenance. It works and I thank God! *D.H.*

**Hip Pains** – I've suffered with hip pains for years but never used any pain killer for good reasons. My husband bought a LLLT Wand for me and it removed all my pains by the third day. I use it almost every day to be safe now. *Vicky W*

**Knee Problems** – I've lived in pain with my left knee for decades. My right knee was replaced years ago and I was saving up \$50,000 to get a new left knee. A friend in the medical business said here Jim use this on your knee. I did and the pain seems to have left me for good, I think, I hope and pray. But of course I continue to use it daily. *Jim J*

**Migraine Headaches** – All my life, off and on, I have suffered with headaches and worst of all Migraine to the point of having to stay in a darkened room for days on end seeking relief. I have used both the Wand and the Disk behind my ears between the spinal column, and on the spinal column and normally within 30 minutes I have relief. It is rare that I have these headaches anymore but I keep my Wand and Disk handy, as they do work for me. *JS*

**Eczemas** – My 7 year old daughter has suffered all winter long with Eczemas. Her skin was red, itchy and many other problems pertaining to it. Absolutely nothing we had done helped her, that is, not until we got TLC treatments TLC-Disks for home use. We took 2-Disks to put on her worst areas with Ace Bandages (AB) and put her to bed, in the morning she was 50% better. Each night we do the same, after 5 days no redness and almost no itching. *N.A.*

**Pains and sicknesses in our house** – After years of most everyone in our family being sick and/or in pain for one thing and then another we used all of the TLC protocol, Dietary Supplements, Wands, Disks, the TLC Spectrabrite™ Clinical Unit, and now we are not sickly anymore, period! We recommend it to everyone. *Anthony and family*

**Low Testosterone** – At my age and that of many of my friends, we're not always able to perform our marital manly duties. A friend of mine told me use this TLC Disk. Put it in a small zip lock bag, put it in my underpants, and aim it face up at my privates all day if I wanted to, I did, and boy did it worked. *Jim and others testify to this.*

**DOCTORS:** Countless testimonies have come back to us from individuals and even many doctors on how well our TLC Spectrabrite™ technologies have helped both the doctor, their family members and their patients. To learn of more testimonies please go to our website: [www.tlcheathsystems.com](http://www.tlcheathsystems.com) As often as we can we upload as many new testimonies as possible and we look forward to you and your patients testimonies as well.

## **MORNING DRINKING WATER EXERCISE - Using TLC Spectrabrite™ Pads, Wands and Disks:**

Charge your drinking water by shining your TLC pad, wand, portable disk or wand above or down into 24 ounces of drinking water every morning for 5-20 minutes, with your unit, set on any desired color or setting. Drink 8 to 12 ounces if possible before eating or drinking anything else then drink the rest throughout the day. If you have liquid minerals and vitamins, like TLC's has, add them, shine light in water and drink. Or, if you have a (see through glass vessel) set your drink on top of your TLC pad or disk and turn unit on any setting. Our technology programs go through clear glass. By adding minerals and vitamins to your water you'll find it will help you to retain the health signals programmed into your TLC Spectrabrite™ unit longer so all can be carried into the blood stream to each cells bringing much needed water, vitamins and minerals to cells thus helping to prevent dehydration. Hydration of our cells in the morning is extremely important. If possible don't eat or drink anything for 30 minutes after drinking your TLC Spectrabrite™ water, if you can't wait, go on drink, then eat.

By doing this morning drinking water exercise faithfully and throughout the day, it may help to marvelously reduce internal and external pains and increase your energy level throughout the day as well. Get the maximum benefit from your TLC Spectrabrite™ Low Light Level Therapy (LLLT) by helping to keep the body hydrated. We do recommend our TLC Health Systems Dietary Supplement of Essential Vitamins and Minerals - Ionic, Fulvic, Humic Minerals and Amino Acids take only 1 ounce daily or 1 ounce per glass of water. There's nothing like our Vitamins and Minerals. Children of all ages like them because they taste just like pure water!

### **A Few Conditions Where Low-Level Laser (or Light) Therapy (LLLT) Are Therapeutically Applied By Doctors**

#### **GENERAL**

Repetitive Stress Injury  
Carpal Tunnel Syndrome  
Epicondylitis, Fibromyalgia  
Reflex Sympathetic Dystrophy (RSD)  
Rotator Cuff Tear, ACL Tears  
Temporo-Mandibular Joint Dysfunction (TMJ)

#### **INJURIES**

Ligament and strained Tendon  
Fractures with Associated Soft Tissue Injuries  
Facet Joint Syndrome  
Contusions  
Bulging and Herniated Discs – Broken Bones

#### **INFLAMMATORY**

Tendonitis, Bursitis, Synovitis  
Bad Knees, Hips, Shoulders, and other Joints  
Myositis - Autoimmune conditions  
Plantar Fasciitis  
Rheumatoid Arthritis, any type Arthritis / Gout  
Shingles (herpes zoster)  
Eczemas, Psoriasis  
Teeth - pain, bleeding, gums gingivitis and etc.

Acne, Acne Rosacea

Genital Herpes, viruses, pathogens, parasites, fungus  
MS – Multiple Sclerosis

#### **OTHER APPLICATIONS**

Eyes - Floaters may vanish w/applied on feet and wrists  
Back –Vertebrae's (C1 and C2) and entire spinal column  
Wound Healing (acute and chronic)  
Scars – even from decades before  
Dermal Ulcers  
Venous Stasis  
Atherosclerotic  
Contact Diseases  
Diabetic  
Traumatic Injuries  
Burns: Thermal, Chemical  
Headaches, Migraines  
Lymphedema  
Neuropathies (diabetic, neurogenic)  
Addictions  
Warts, skin rashes  
Remodeling Dermal Lesions (keloid scars) and more!  
*Search (LLLT and sickness names) find unbiased sites: [www.AIOLT.org](http://www.AIOLT.org)*

**DOCTORS and MANY OF THEIR PATENTS** have reported successfully using the TLC Spectrabrite™ Clinical Unit in numerous treatments listed above by setting the unit to the default setting #1 Tesla Pain Care, then fastening a pad on the bottom of one foot, fastening another pad on the opposite (hand and wrist), one pad or two pads over the injured area, and/or finally using one wand on either Foot and Hand Reflexology Points you've chosen to treat the condition, and finally use one wand on Acupuncture and/or Meridian Points if you like. After hooking up customer this way, turn the unit on and simultaneously use three pads and one wand (four devices) to treat customer for one or more sessions if desired.



**Recommended items** pictured above are for doctors to have on hand for customers. All items can be purchased at your local Pharmacy, Grocery Store, Costco, Sam's, Walmart and etc.

**Support Wraps** are 3 in. x 2.3 ft. in size each un-stretched, they easily fasten around wrists, knees, feet, chest, back, neck, head, and (waists - by using two wraps attached). Together two will reach around any size belly, able to hold pads or disks in place, so one can fasten on and go.

**Saran Wrap** for wrapping pads, wands, portable wands, and disks to use on customers and pets for cleanliness and personal hygiene protection. Saran Wrap won't hinder TLC's performance.

**Disinfecting Wipes** are for cleanliness and personal hygiene protection. Simply wipe the pads, disks or wands clean after each use and Saran Wrap them again each time.

## Treatment Comparison

### Which One Would You Choose?

If there were a way you could own the TLC Spectrabrite™ Disk or Pen and use them as often as desired for pain relief for years to come (without side effects!) for a cash price of a month's supply of prescription painkillers or pain patches (with their stated potentially-*dangerous* side effects), so, which one would you choose?



Order TLC Health Systems Dietary Supplements presented above as needed to help buildup and sustain your total health. Our Essential Vitamins and Minerals shown are very unique, they are tasteless, children of all ages love them, and better yet these are Ionic, Fulvic and Humanic Minerals able to penetrate the bodies cell walls bringing life.

TLC Health Systems  
P.O. Box 264  
Westfield, IN. 46074  
317-804-1803  
info@tlchealthsystems.com  
www.tlchealthsystems.com



This Clinical Unit shown inside case and all these other items above consist of the Ultimate Package for Every Doctor's Office and Health Clinic. All these other items shown are treatments for their Valued Patients to utilize at home until their next scheduled Doctors' visit. There are no harmful side effects! Contact the TLC Representative that gave you this information for more details. Thank you! TLC