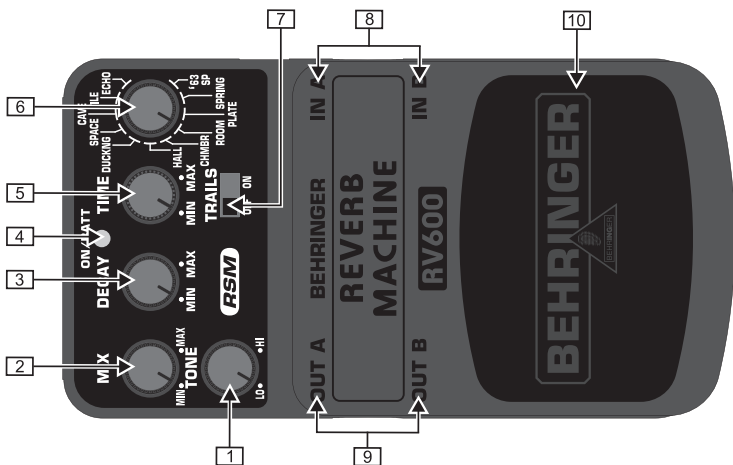


# REVERB MACHINE RV600



Thank you for showing your confidence in us by purchasing the BEHRINGER REVERB MACHINE RV600. This ultimate effects pedal is specifically designed to deliver 24-bit, high-resolution stereo reverbs comparable to state-of-the-art studio processors. Thanks to its 11 well-known modes and the extensive parameter control that allow for maximum creativity, you'll have plenty of great sounds at your disposal for every situation.

## 1. CONTROLS



Top view


- 1 The *TONE* control allows you to shape your overall sound.
- 2 The *MIX* control determines the amount of reverb added to the signal.
- 3 The *DECAY* control determines how quickly the reverb fades. In *ECHO* mode, it determines the amount of signal feedback.
- 4 The blue *ON/BATT* LED illuminates when the effect is activated. It also serves as a battery level indicator.
- 5 The *TIME* control determines the pre-delay time, that is, the delay time between the original dry sound and the actual, audible reverb effect. In *SPACE* mode, it determines the harmonic density of the signal.
- 6 This control lets you choose one of the eleven reverb type effects:
  - ECHO:** Very fat echo with reverb.
  - TILE:** Emulates the acoustics of a tiled room with bright early reflections, like a bathroom.
  - CAVE:** Deep and large echo, like being inside a cave.
  - SPACE:** Ambiental, lush reverb with a dense, harmonized, octave-shifted content.
  - DUCKNG:** Hall reverb with a ducking effect. The reverb “ducks” under your instrument’s signal while you are playing to avoid clouding your sound, and reemerges when you stop, adding a rich and smooth tail to it.
  - HALL:** Bright and open reverb that simulates the reflections of a concert hall.
  - CHMBR:** Emulates the highly reflective acoustics of a typical reverb chamber.
  - ROOM:** Clear and natural acoustics of a room.
  - PLATE:** Metallic, resonant sound of a plate reverb.
  - SPRING:** Simulates the distinct and beloved sound of a spring reverb.
  - ‘63 SP:** Emulates the classic sound of a 1963 guitar combo spring reverb.
- 7 With the *TRAILS* switch turned on, the reverb will smoothly fade away once you bypass the effect instead of simply being cut off.
- 8 Use the two 1/4" TS connectors *IN A* and *IN B* to plug in a stereo input signal. For mono signals connect to *IN A*.
- 9 The two 1/4" TS connectors *OUT A* and *OUT B* send the signal to your amp. Use both outputs to achieve a full stereo effect. For mono use, connect to *OUT A*.
- 10 Use the footswitch to activate/deactivate the effect.

Use the *DC IN* connection to plug in a 9 V power supply (not included).


The *BATTERY COMPARTMENT* is located underneath the pedal cover. To install or replace the 9 V battery (not included), press the hinges with a ballpoint pen and remove the pedal cover. Be careful not to scratch the unit.

# REVERB MACHINE RV600



 The RV600 has no on/off switch. As soon as you insert the plug into the IN connector, the RV600 is on. When not using the RV600, remove the plug from the IN connector. This extends the life of the battery.

The SERIAL NUMBER is located on the underside.

 In rare cases interferences of the normal function may appear by external influence (e.g. electrostatic discharge), as for example sound disturbances or malfunctions. If this occurs, please turn down the volume on subsequent amplifiers and disconnect the input connector briefly to restart the application.

## 2. WARRANTY

For our current warranty terms, please refer to our website at <http://www.behringer.com>.

## 3. SPECIFICATIONS

IN A		IN B	
Connector	1/4" TS	Connector	1/4" TS
Impedance	500 kΩ	Impedance	500 kΩ
Impedance mono	250 kΩ		
OUT A		OUT B	
Connector	1/4" TS	Connector	1/4" TS
Impedance	1 kΩ	Impedance	1 kΩ
Power supply	9 V $\approx$ , 100 mA, regulated BEHRINGER PSU-SB U.S.A./Canada 120 V~, 60 Hz China 220 V~, 50 Hz Korea 220 V~, 60 Hz Europe/U.K./Australia 230 V~, 50 Hz Japan 100 V~, 50 – 60 Hz		
Power connector	2 mm DC jack, negative center		
Battery	9 V type 6LR61		
Power consumption	30 mA		
Dimensions (H x W x D)	approx. 54 mm (2 1/8") x 70 mm (2 3/4") x 123 mm (4 4/5")		
Weight	approx. 0.33 kg (0.73 lbs)		

BEHRINGER is constantly striving to maintain the highest professional standards. As a result of these efforts, modifications may be made from time to time to existing products without prior notice. Specifications and appearance may therefore differ from those listed or shown.

## 4. SAFETY INSTRUCTIONS

Do not use near water, or install near heat sources. Use only authorized attachments/accessories. Do not service product yourself. Contact our qualified servicing personnel for servicing or repairs, **especially when power supply cord or plug is damaged.**

No utilizar cerca de agua o instalar cerca de fuentes de calor. Utiliza sólo accesorios y aditamentos autorizados. No intentes reparar el producto tú mismo. Contacta a nuestro personal técnico cualificado para servicio y reparaciones, **especialmente cuando la fuente o el cable de alimentación estén dañados.**

Не эксплуатуйте прибор вблизи от источников воды и тепла. Применяйте только авторизованные дополнительные устройства. Никогда не ремонтируйте прибор самостоятельно. Ремонт может производить только квалифицированный специализированный персонал, **особенно при повреждениях сетевого провода или сетевой вилки.**

水分の近くや、ヒーターなど熱気のある場所では使用しないでください。正式に認可された付属品のみを使用してください。製品はご自分では決して修理せず、特に電源コードもしくはプラグが損傷した場合には、必ず製品サービスおよびリペアの資格を有した当社の担当員にご相談ください。

不要在靠近水源的地方使用，或在靠近热源的地方安装。只使用经过许可的附件 / 配件。不要自己进行产品维修，**尤其是当电源线或插座损坏的时候**，请联系我们的专业服务人员有关产品维修事宜。

Die deutsche Anleitung ist erhältlich @ [www.behringer.com](http://www.behringer.com)  
Manuel francophone en téléchargement sur [www.behringer.com](http://www.behringer.com)  
Manual en español disponible en [www.behringer.com](http://www.behringer.com)  
Manuali italiani disponibili @ [www.behringer.com](http://www.behringer.com)  
Русскоязычное руководство @ [www.behringer.com](http://www.behringer.com)  
Polska instrukcja dostępna jest pod adresem @ [www.behringer.com](http://www.behringer.com)  
Nederlandse handleiding beschikbaar @ [www.behringer.com](http://www.behringer.com)  
Suomenkielinen käyttöohje saatavilla osoitteesta [www.behringer.com](http://www.behringer.com)  
Svensk manual finns tillgänglig på [www.behringer.com](http://www.behringer.com)  
Dansk vejledning findes på @ [www.behringer.com](http://www.behringer.com)  
Manual português disponível @ [www.behringer.com](http://www.behringer.com)  
Ελληνικό εγχειρίδιο υπάρχει διαθέσιμο στη διεύθυνση [www.behringer.com](http://www.behringer.com)  
日本語版マニュアル @ [www.behringer.com](http://www.behringer.com)  
使用说明书可在 [www.behringer.com](http://www.behringer.com) 下载

Technical specifications and appearance subject to change without notice. The information contained herein is correct at the time of printing. BEHRINGER accepts no liability for any loss which may be suffered by any person who relies either wholly or in part upon any description, photograph or statement contained herein. Colors and specification may vary slightly from product. Products are sold through our authorized dealers only. Distributors and dealers are not agents of BEHRINGER and have absolutely no authority to bind BEHRINGER by any express or implied undertaking or representation. No part of this manual may be reproduced or transmitted in any form or by any means, electronic or mechanical, including photocopying and recording of any kind, for any purpose, without the express written permission of BEHRINGER International GmbH. ALL RIGHTS RESERVED. © 2006 BEHRINGER International GmbH, Hanns-Martin-Schleyer-Str. 36-38, 47877 Willich-Münchheide II, Germany. Tel. +49 2154 9206 0, Fax +49 2154 9206 4903

# FEDERAL COMMUNICATIONS COMMISSION

## COMPLIANCE INFORMATION



Responsible party name: **MUSIC Group Services USA, Inc.**

Address: **18912 North Creek Parkway,  
Suite 200 Bothell, WA 98011,  
USA**

Phone/Fax No.: **Phone: +1 425 672 0816  
Fax: +1 425 673 7647**

### **REVERB MACHINE RV600**

complies with the FCC rules as mentioned in the following paragraph:

This equipment has been tested and found to comply with the limits for a Class B digital device, pursuant to part 15 of the FCC Rules. These limits are designed to provide reasonable protection against harmful interference in a residential installation. This equipment generates, uses and can radiate radio frequency energy and, if not installed and used in accordance with the instructions, may cause harmful interference to radio communications. However, there is no guarantee that interference will not occur in a particular installation. If this equipment does cause harmful interference to radio or television reception, which can be determined by turning the equipment off and on, the user is encouraged to try to correct the interference by one or more of the following measures:

- Reorient or relocate the receiving antenna.
- Increase the separation between the equipment and receiver.
- Connect the equipment into an outlet on a circuit different from that to which the receiver is connected.
- Consult the dealer or an experienced radio/TV technician for help.

This device complies with Part 15 of the FCC rules. Operation is subject to the following two conditions:

- (1) this device may not cause harmful interference, and
- (2) this device must accept any interference received, including interference that may cause undesired operation.

#### **Important information:**

Changes or modifications to the equipment not expressly approved by MUSIC Group can void the user's authority to use the equipment.