



Windows Driver Manual

Label Printers

Rev. 3.00

SLP-TX420 / TX423
SLP-TX400 / TX403
SLP-DX420 / DX423
SLP-DX220 / DX223
SLP-T400 / T403
SLP-D420 / D423
SLP-D220 / D223
SRP-770II

■ Table of Contents

1. Manual Information.....3

2. Operating System (OS) Environment.....3

3. Windows Driver Preparation.....3

4. Windows Driver Installation.....4

 4-1 Installing on Windows XP/Server 2003.....4

 4-1-1 Via Serial or Parallel Port.....4

 4-1-2 Via USB Port8

 4-1-3 Via Network Port.....14

 4-2 Installing Windows VISTA/Server 2008/7/8/Server 2012/1018

 4-2-1 Via Serial or Parallel Port.....18

 4-2-2 Via USB Port22

 4-2-3 Via Network Port.....26

5. Detailed Windows Driver Settings.....30

 5-1 Printing Preferences30

 5-2 Adding new paper size.....31

6. Specifications.....33

 6-1 Resolution.....33

 6-2 Paper Size33

1. Manual Information

This Windows Driver Installation Manual provides information on installation, detailed specifications, and usage of the printer's Windows Driver according to PC operating system (OS).

We at BIXOLON maintain ongoing efforts to enhance and upgrade the functions and quality of all our products. In following, product specifications and/or user manual content may be changed without prior notice.

2. Operating System (OS) Environment

The following operating systems are supported for usage.

- Microsoft Windows XP SP3 (32bit, 64bit)
- Microsoft Windows Server 2003 SP1 (32bit)
- Microsoft Windows Server 2003 (64bit)
- Microsoft Windows VISTA (32bit, 64bit)
- Microsoft Windows Server 2008 (32bit, 64bit)
- Microsoft Windows Server 2008 R2 (64bit)
- Microsoft Windows 7 (32bit, 64bit)
- Microsoft Windows 8 (32bit, 64bit)
- Microsoft Windows Server 2012 (64bit)
- Microsoft Windows Server 10 (32bit, 64bit)

3. Windows Driver Preparation

The Windows Driver is included in the enclosed CD, and Latest file versions can be downloaded from the BIXOLON website.

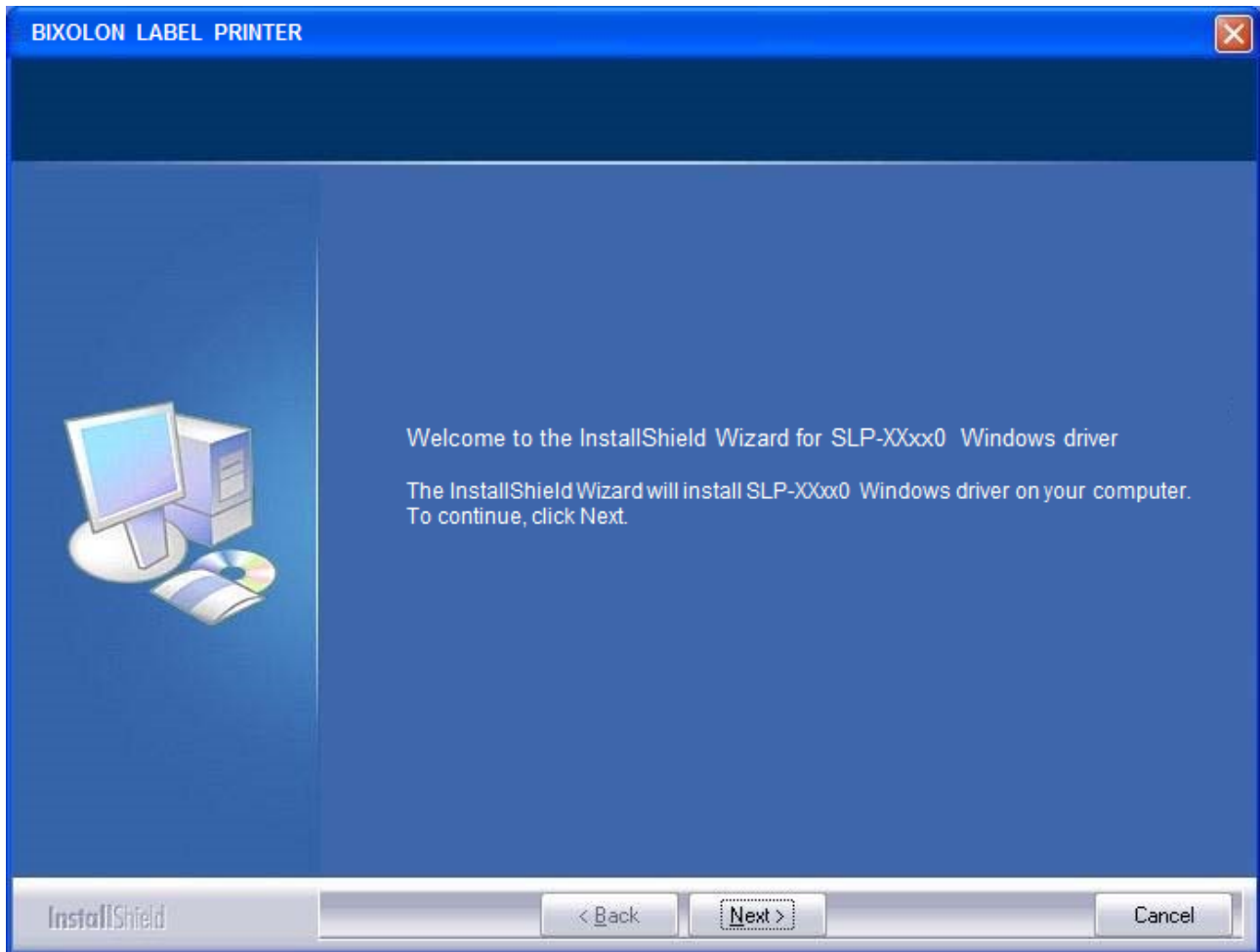
www.bixolon.com

4. Windows Driver Installation

4-1 Installing on Windows XP/Server 2003

4-1-1 Via Serial or Parallel Port

- 1) Double-click the Windows Driver installation file.
- 2) Click the "Next" button.



Label Printers

- 3) Select the COM or LPT (Which one you want to use) port to be used and click the “Next” button.

Select a printer and port BIXOLON

Manufacturer: BIXOLON

Printers: BIXOLON SLP-XXxx0, BIXOLON SLP-XXxx3

Serial Port: COM1, COM2, COM3, COM4

Parallel Port: LPT1, LPT2

USB Port: USB

Network Port: Network IP: 192 . 168 . 1 . 1 Port: 9100

Cancel Next

Select a printer and port BIXOLON

Manufacturer: BIXOLON

Printers: BIXOLON SLP-XXxx0, BIXOLON SLP-XXxx3

Serial Port: COM1, COM2, COM3, COM4

Parallel Port: LPT1, LPT2

USB Port: USB

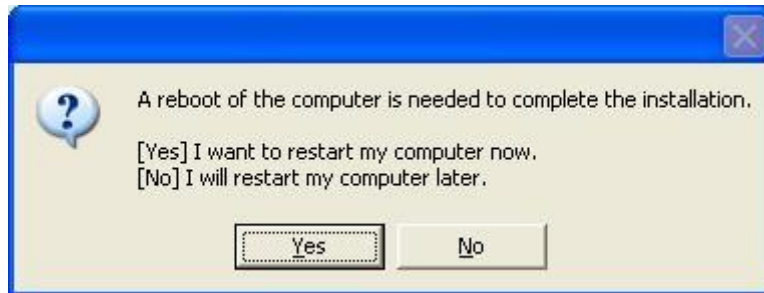
Network Port: Network IP: 192 . 168 . 1 . 1 Port: 9100

Cancel Next

- 4) When the following message box appears, click the “Continue Anyway” button.

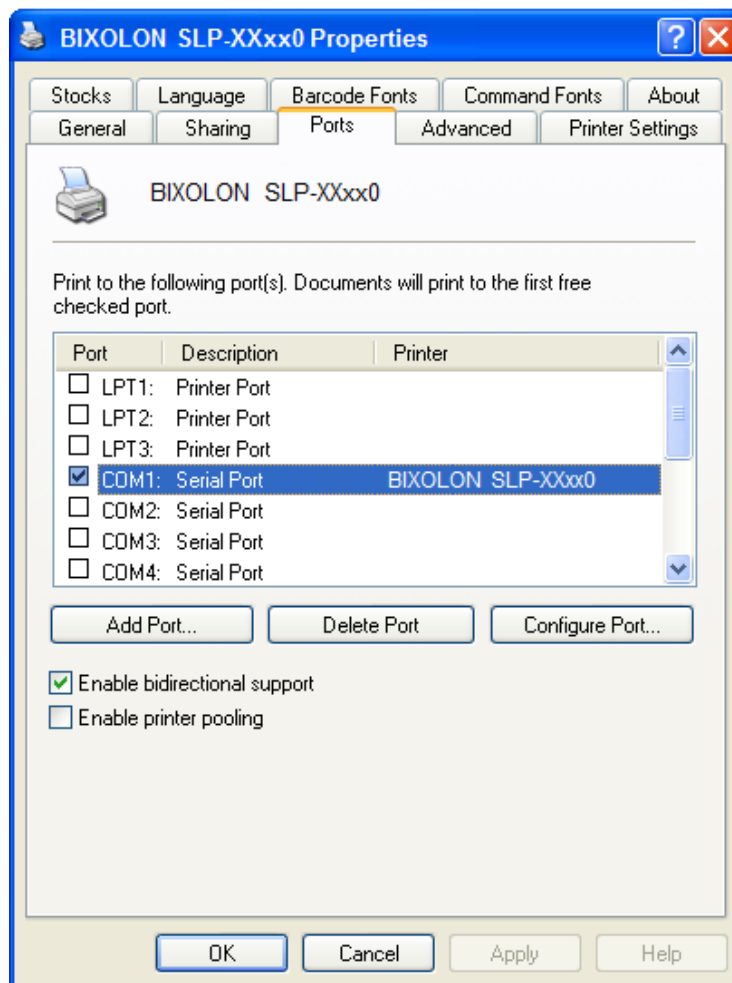


5) Clicking the "Yes" button will reboot the PC.



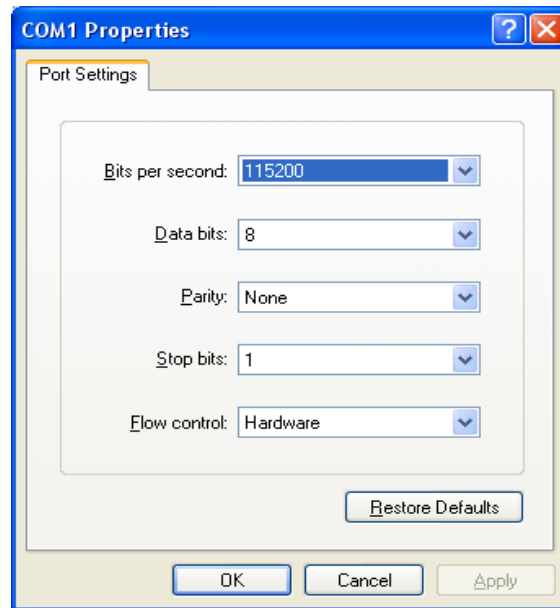
6) Open the printer properties window in the Windows OS.

7) Click the "Port Settings" button in the "Ports" tab.

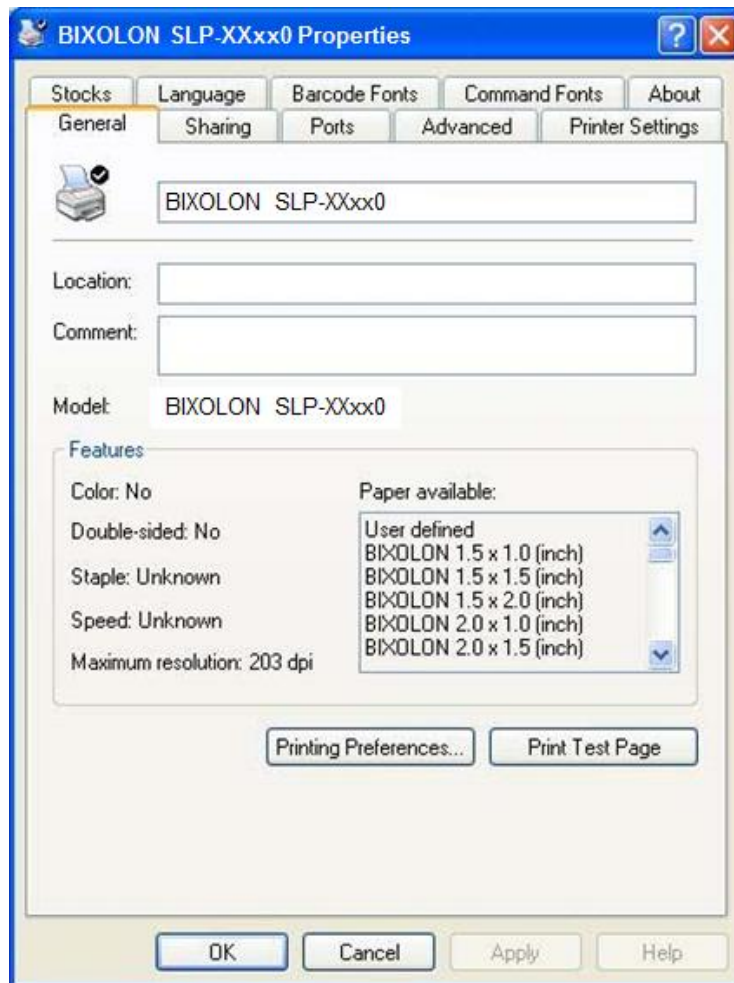


Label Printers

- 8) Match the communication settings to those of the printer.
(The communication settings of the printer can be performed by conducting a self-test.)



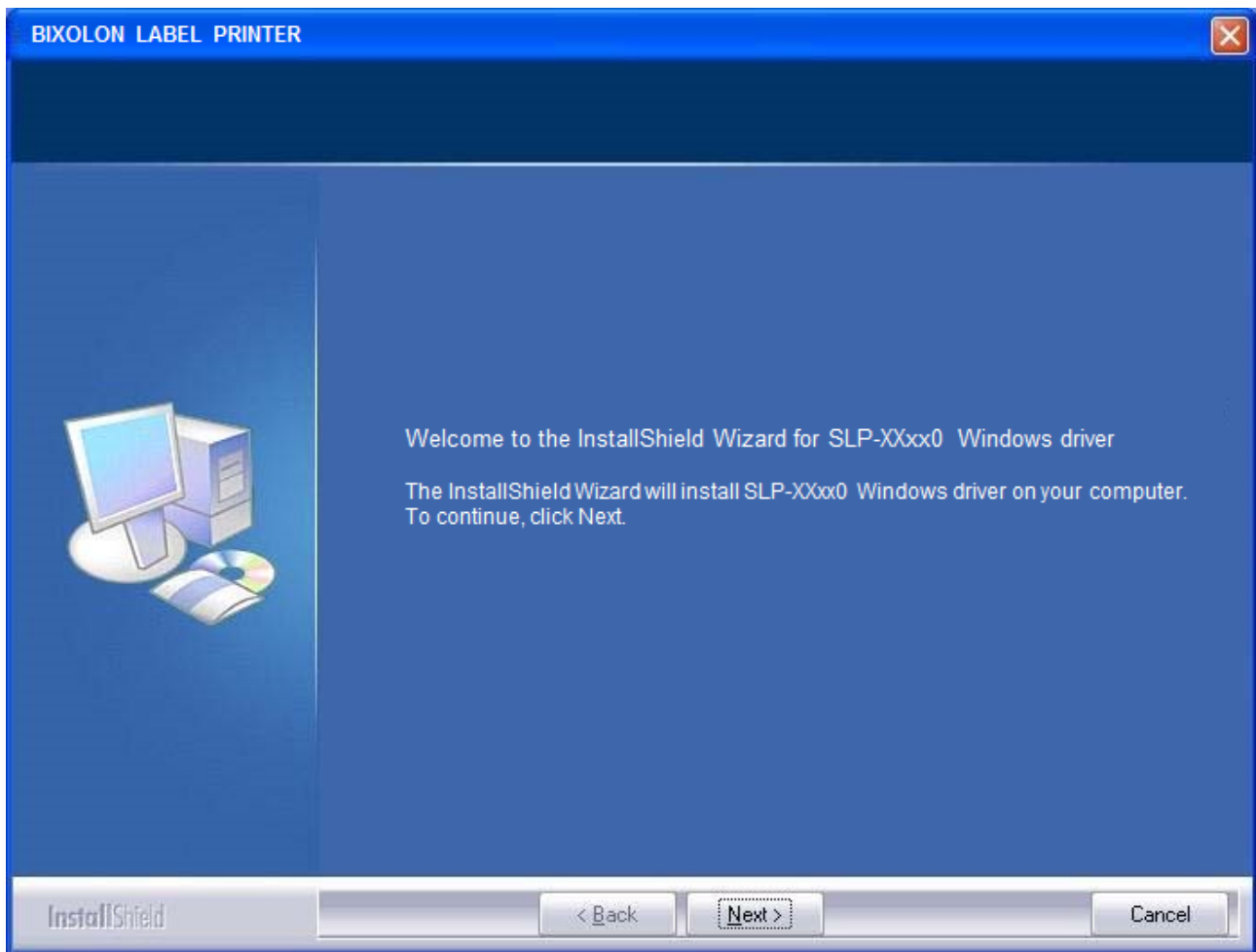
- 9) Click the "Print Test Page" button and check printing status.



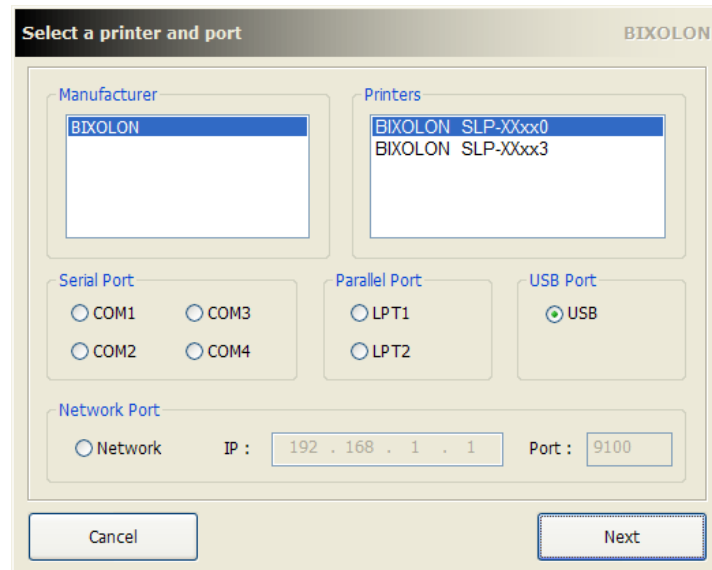
- 10) Proper installation of the driver is indicated if the test page is printed normally.

4-1-2 Via USB Port

- 1) Double-click the Windows Driver installation file.
- 2) Click the “Next” button.



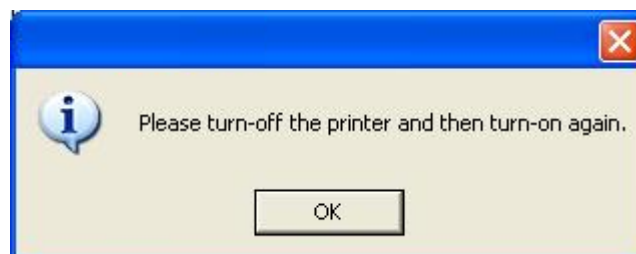
3) Select USB and click the "Next" button.



4) When the following message box appears, click the "Continue Anyway" button.



5) Click the "OK" button.

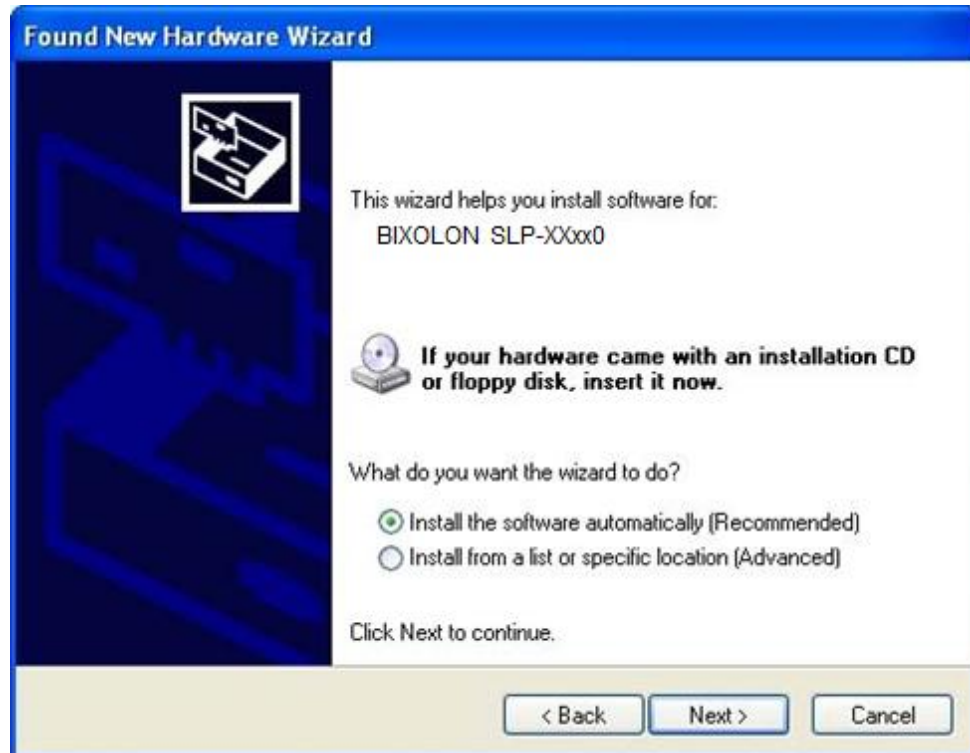


6) Turn on the printer.

- 7) When the New Hardware Wizard appears for the installation of the Windows Driver, select the option as shown below and click the “Next” button.



- 8) Click the “Next” button.



9) Click the “Next” button.



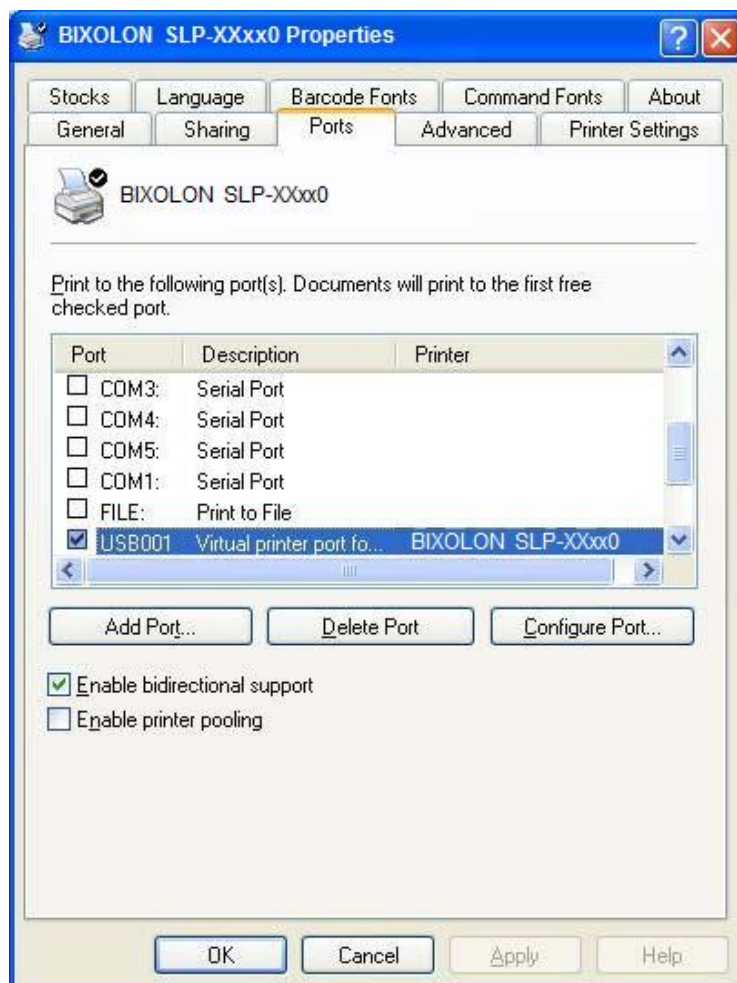
10) Click the “Continue Anyway” button.



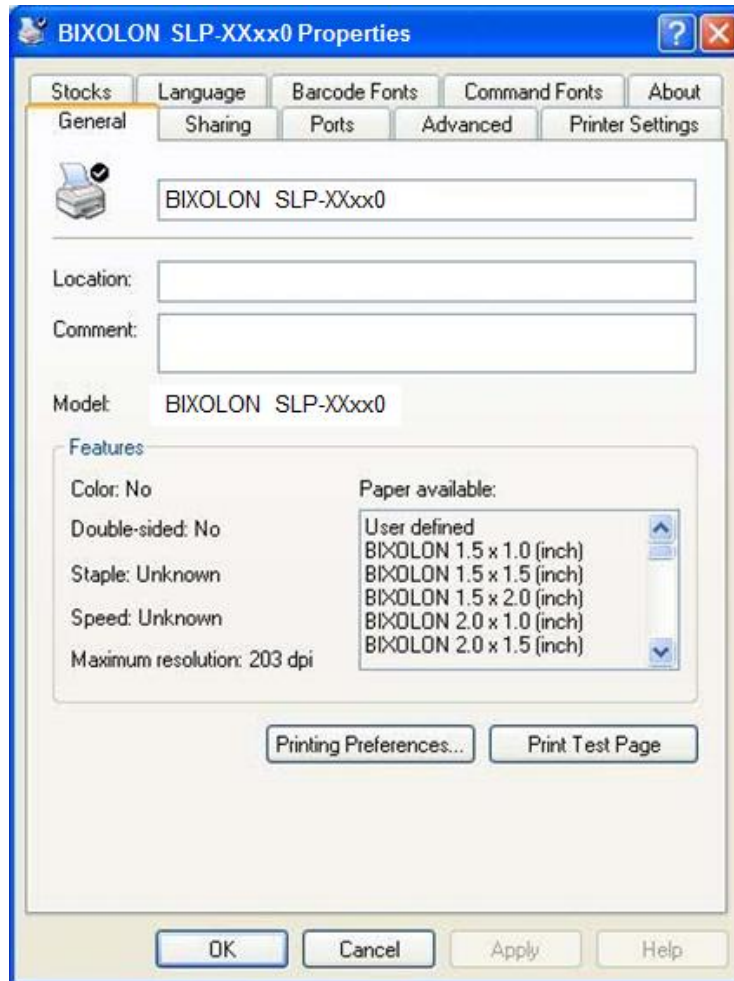
11) Click the “Finish” button.



12) The USB Port setting can be confirmed in the Windows Driver properties.



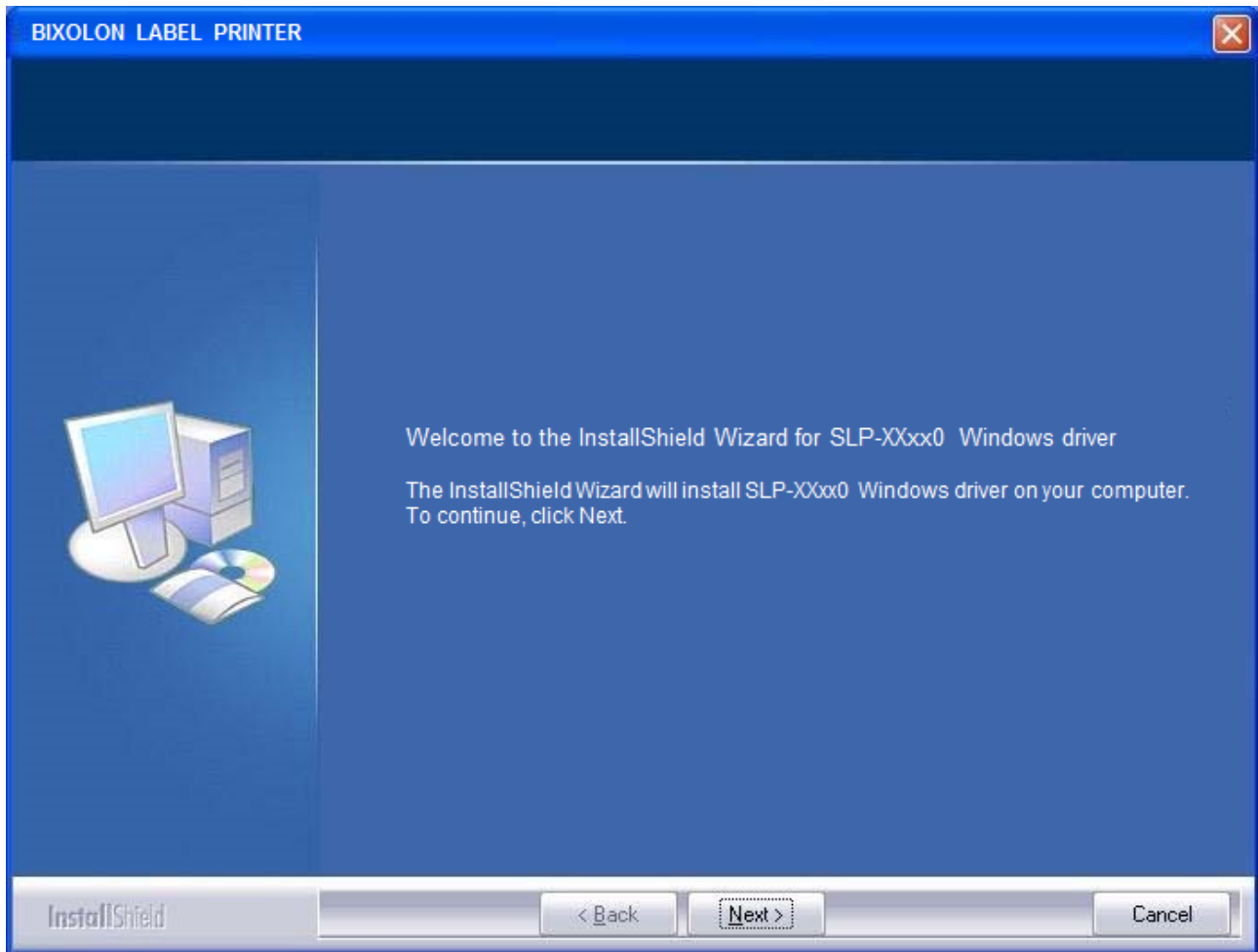
13) Click the “Print Test Page” button and check printing status.



14) Proper installation of the driver is indicated if the test page is printed normally.

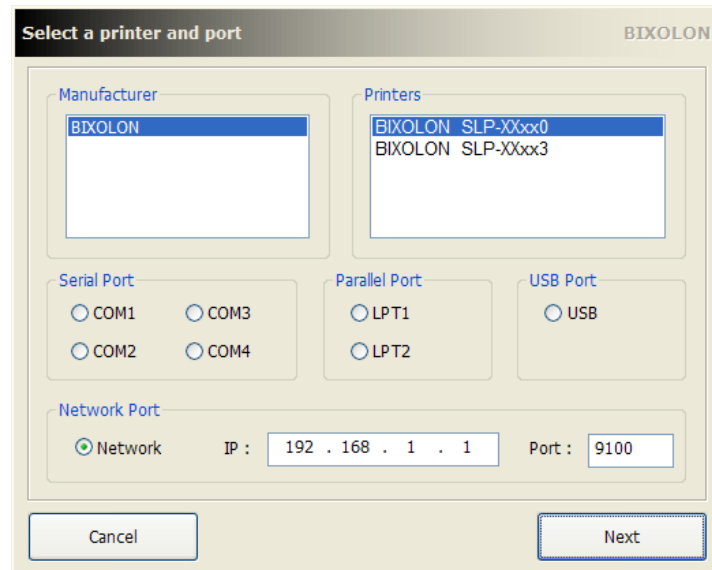
4-1-3 Via Network Port

- 1) Double-click the Windows Driver installation file.
- 2) Click the “Next” button.



3) Select Network port.

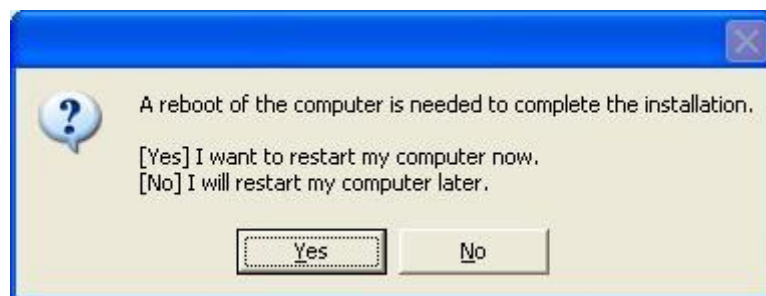
4) Type IP address and port number and then click “Next” button.



5) When the following message box appears, click the “Continue Anyway” button.

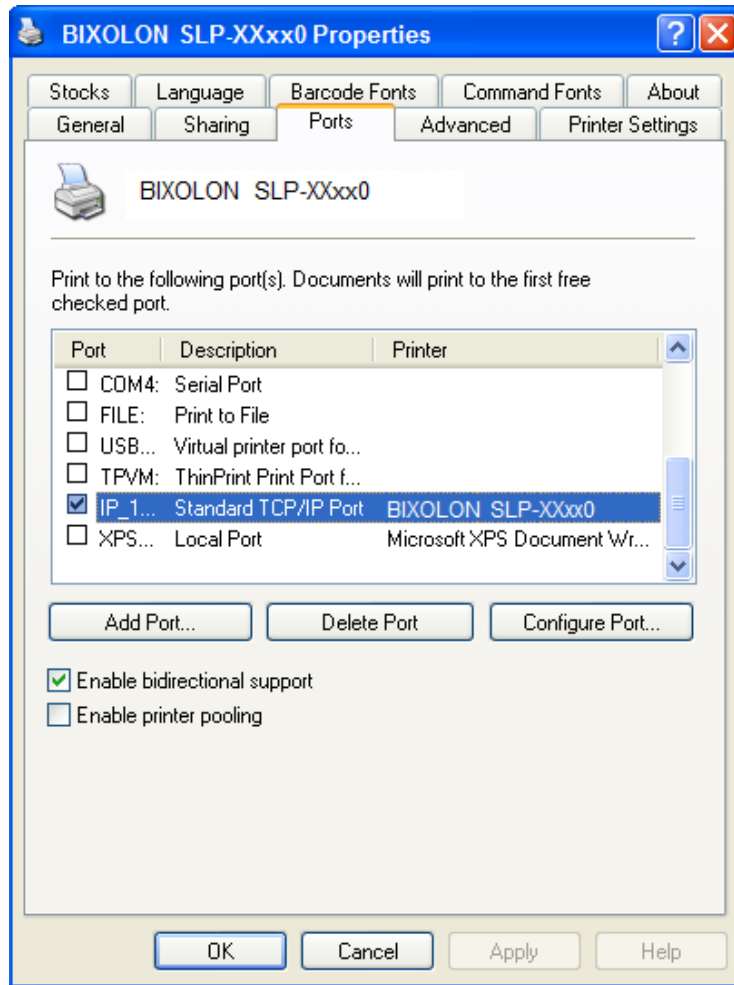


6) Clicking the “Yes” button will reboot the PC.

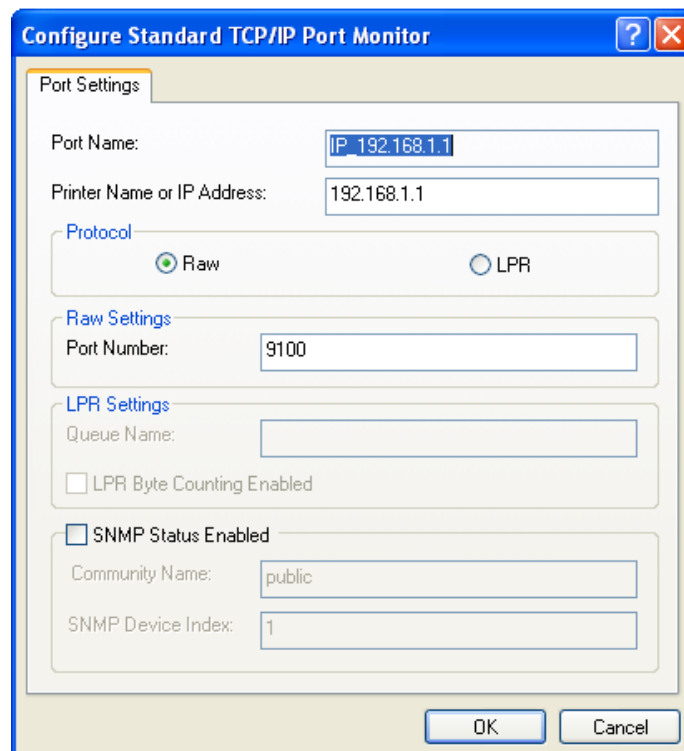


7) Open the printer properties window in the Windows OS.

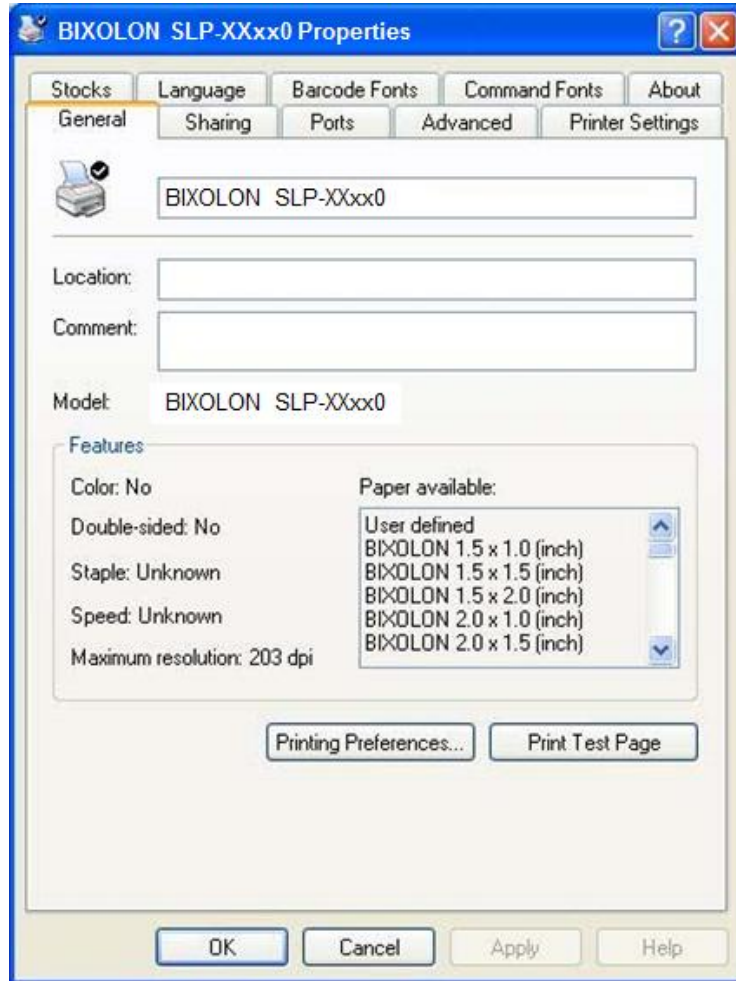
8) Click the "Port Settings" button in the "Ports" tab.



9) Match the communication settings to those of the printer.



10) Click the “Print Test Page” button and check printing status.

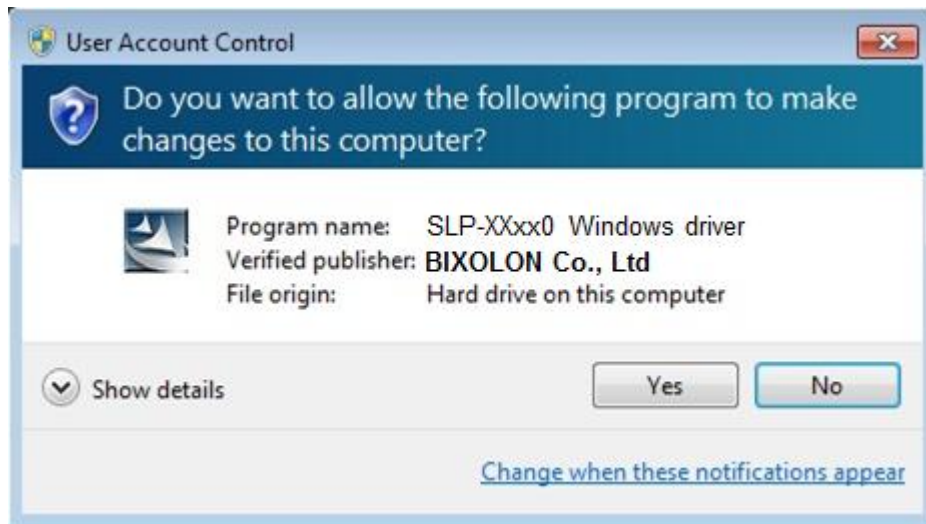


11) Proper installation of the driver is indicated if the test page is printed normally.

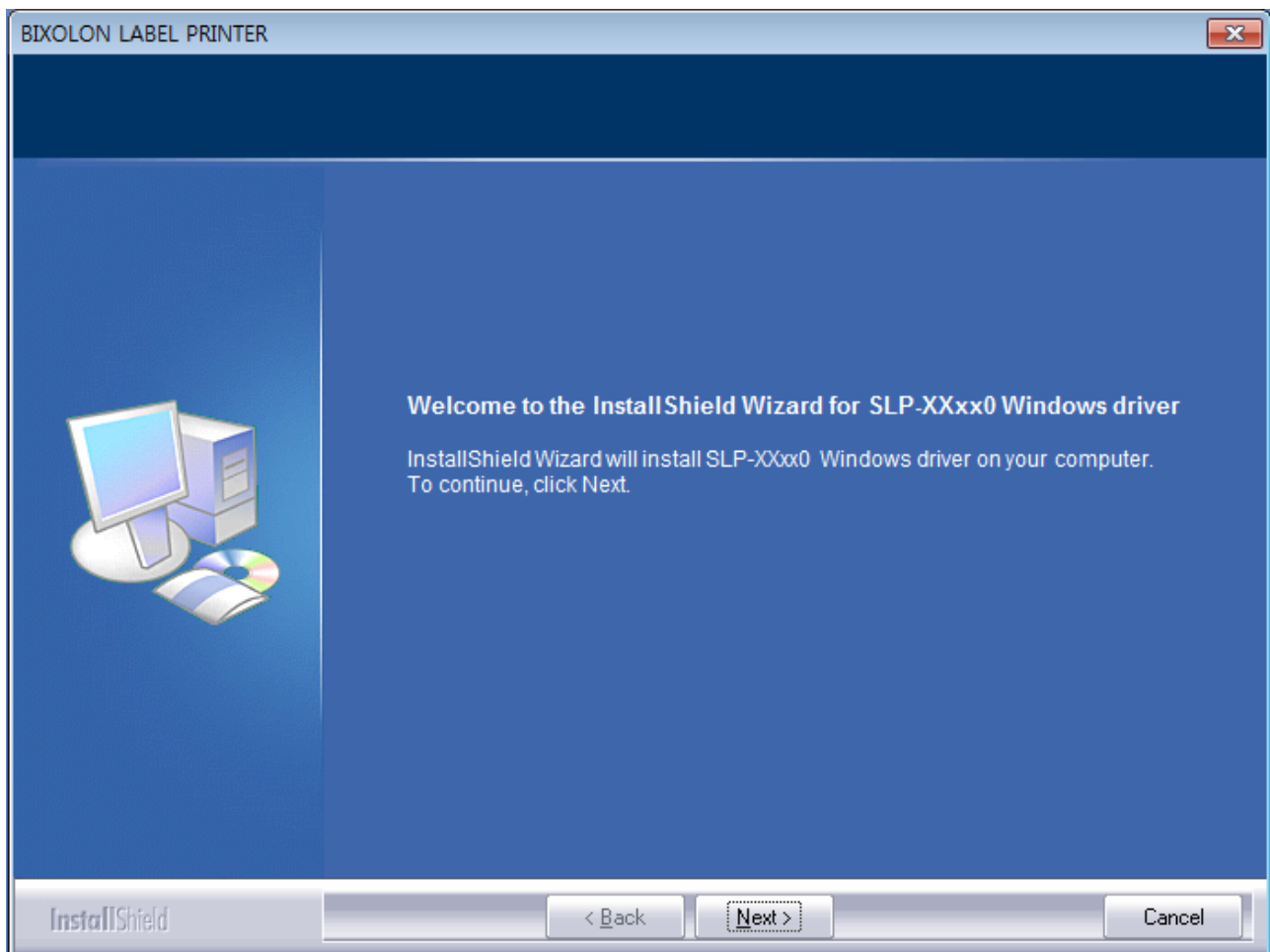
4-2 Installing Windows VISTA/Server 2008/7/8/Server 2012/10

4-2-1 Via Serial or Parallel Port

- 1) Double-click the Windows Driver installation file.
- 2) Click the “Yes” button.



- 3) Click the “Next” button.



Label Printers

- 4) Select the COM or LPT (Which one you want to use) port to be used and click the “Next” button.

Select a printer and port BIXOLON

Manufacturer: BIXOLON

Printers: BIXOLON SLP-XXxx0, BIXOLON SLP-XXxx3

Serial Port: COM1, COM2, COM3, COM4

Parallel Port: LPT1, LPT2

USB Port: USB

Network Port: Network, IP: 192.168.1.1, Port: 9100

Cancel Next

Select a printer and port BIXOLON

Manufacturer: BIXOLON

Printers: BIXOLON SLP-XXxx0, BIXOLON SLP-XXxx3

Serial Port: COM1, COM2, COM3, COM4

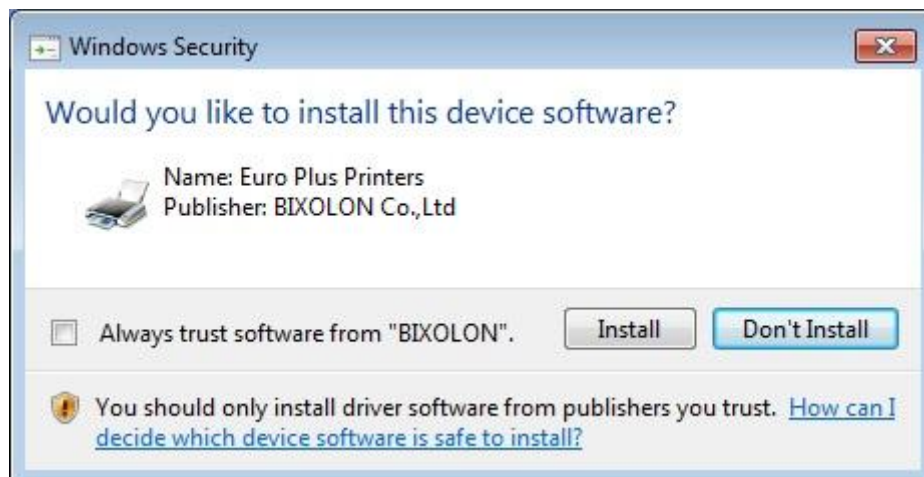
Parallel Port: LPT1, LPT2

USB Port: USB

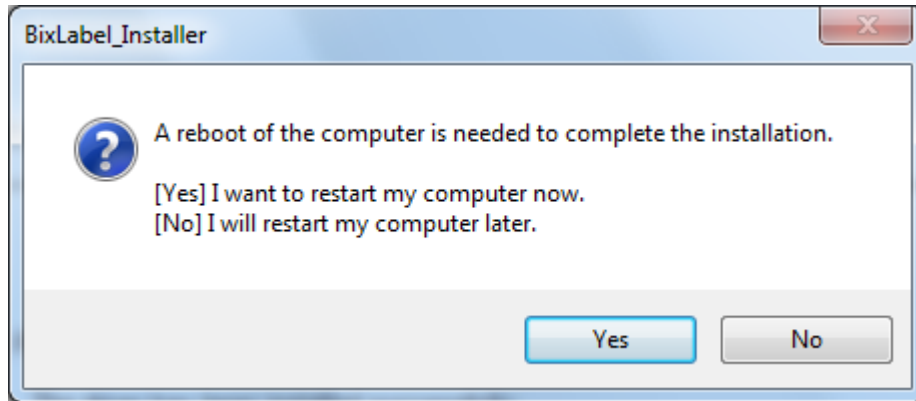
Network Port: Network, IP: 192.168.1.1, Port: 9100

Cancel Next

- 5) When the following message box appears, click the “Install” button.

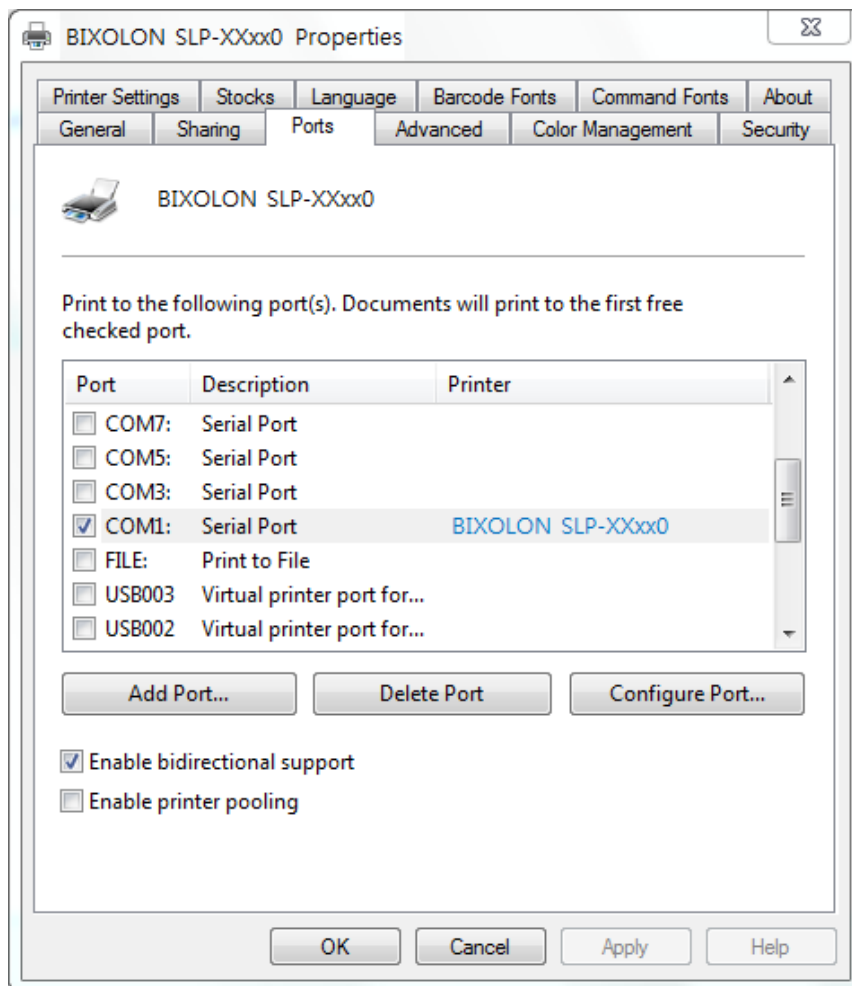


6) Clicking the "Yes" button will reboot the PC.



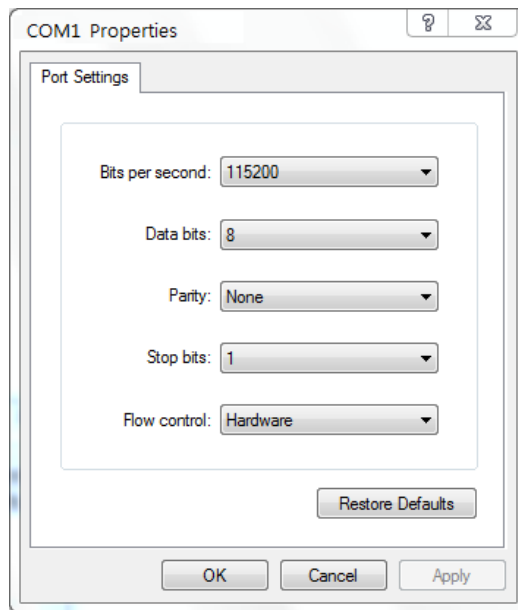
7) Open the printer properties window in the Windows OS.

8) Click the "Port Settings" button in the "Ports" tab.

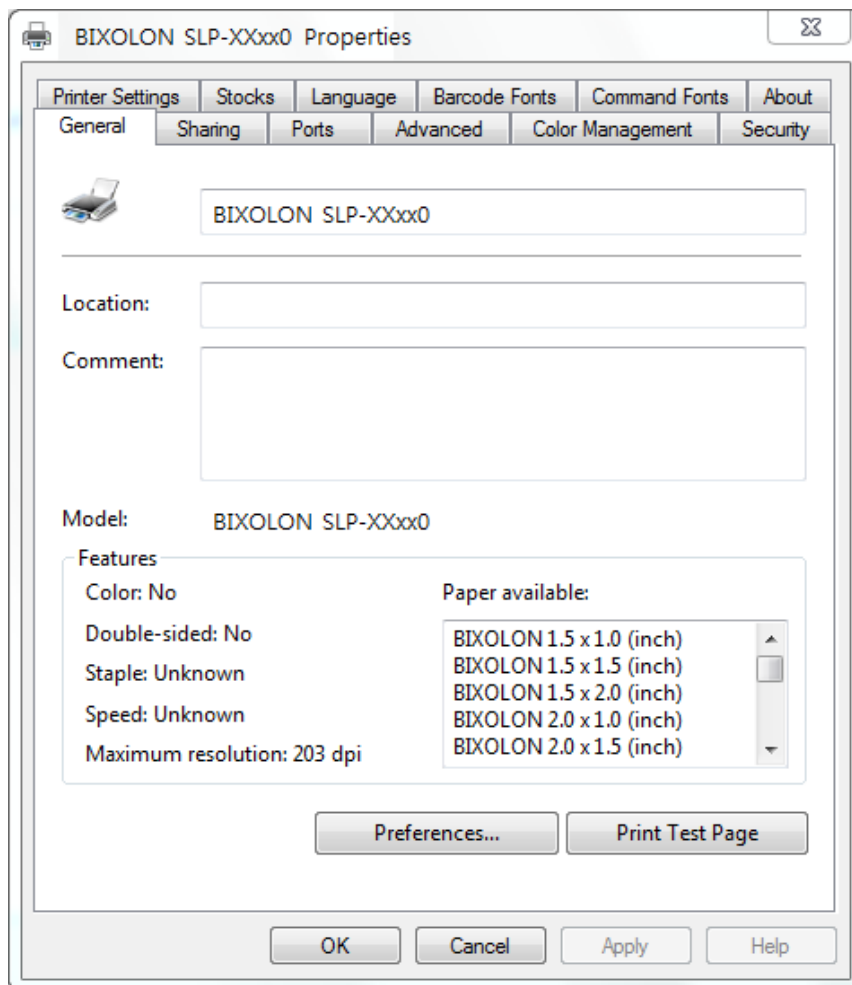


Label Printers

- 9) Match the communication settings to those of the printer.
(The communication settings of the printer can be performed by conducting a self-test.)



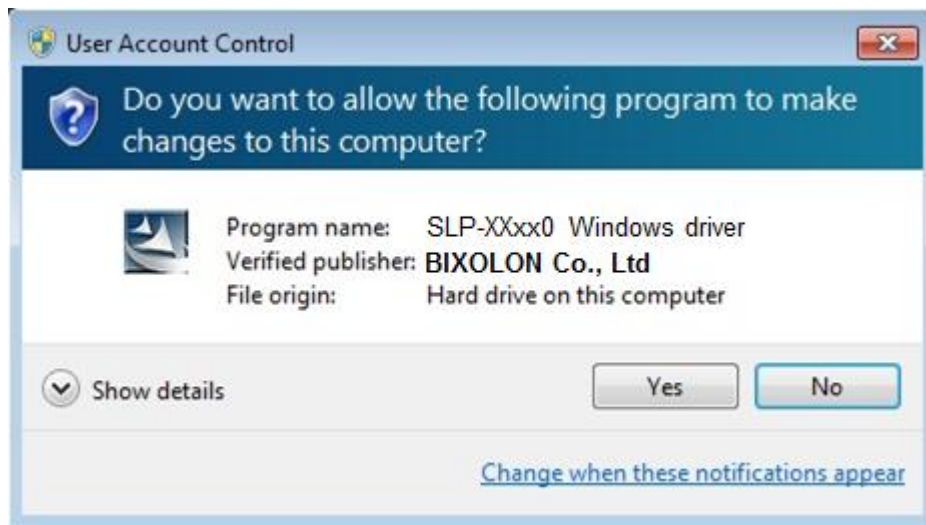
- 10) Click the "Print Test Page" button and check printing status.



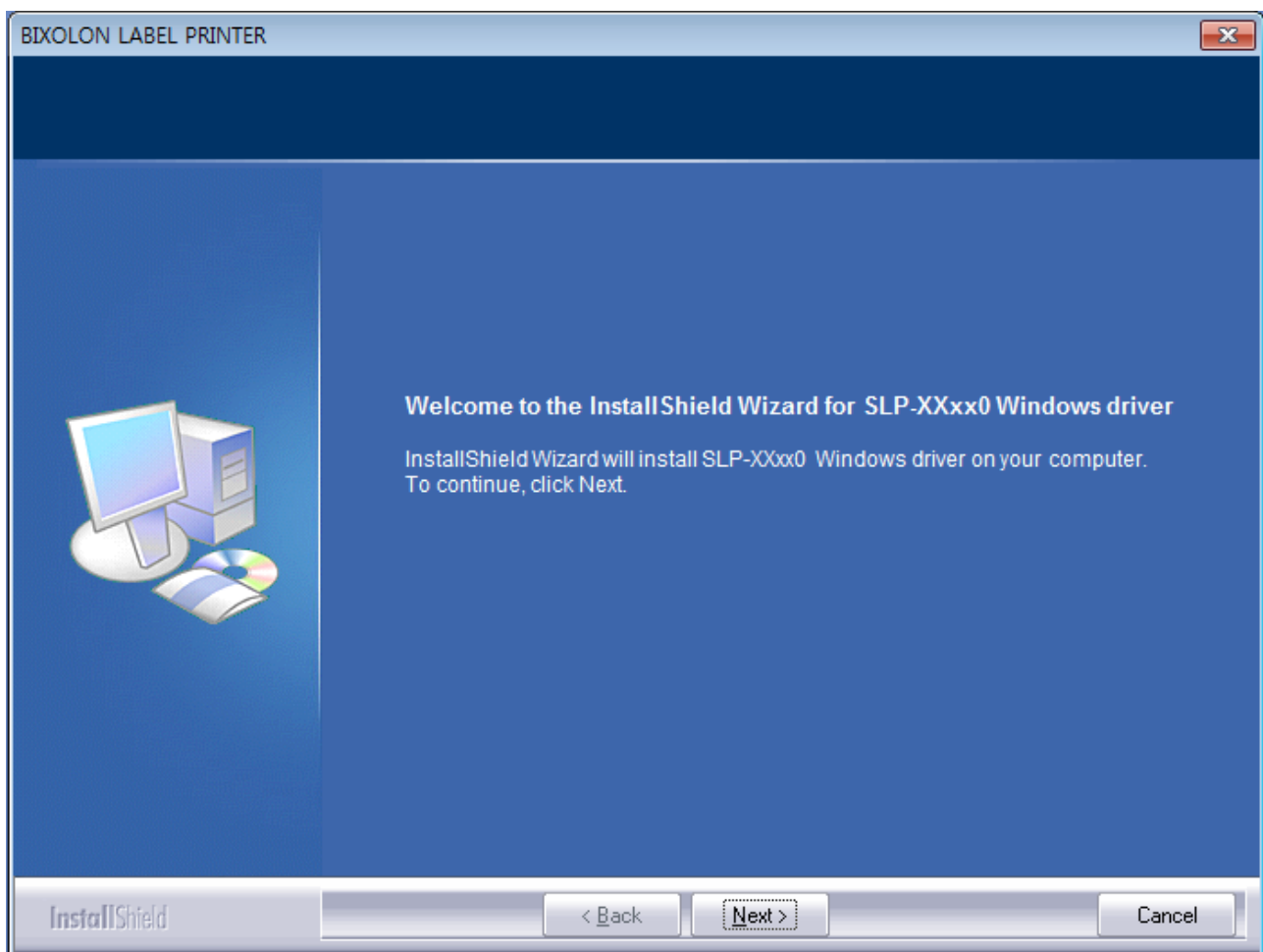
- 11) Proper installation of the driver is indicated if the test page is printed normally.

4-2-2 Via USB Port

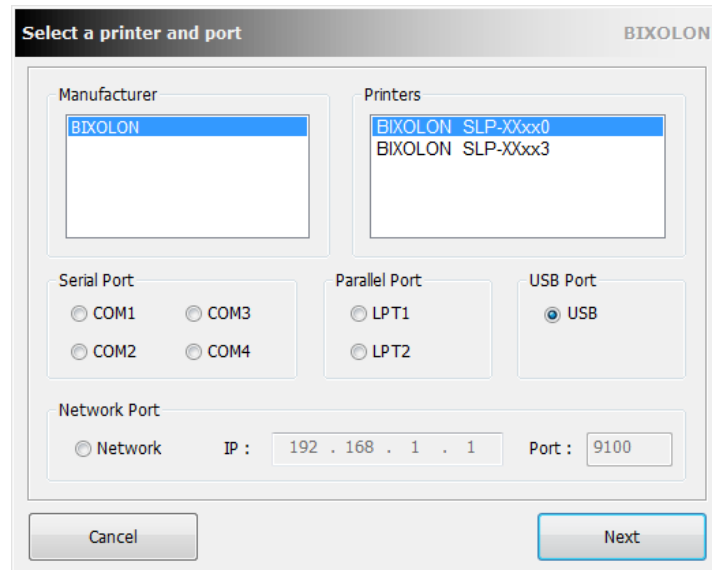
- 1) Double-click the Windows Driver installation file.
- 2) Click the “Yes” button



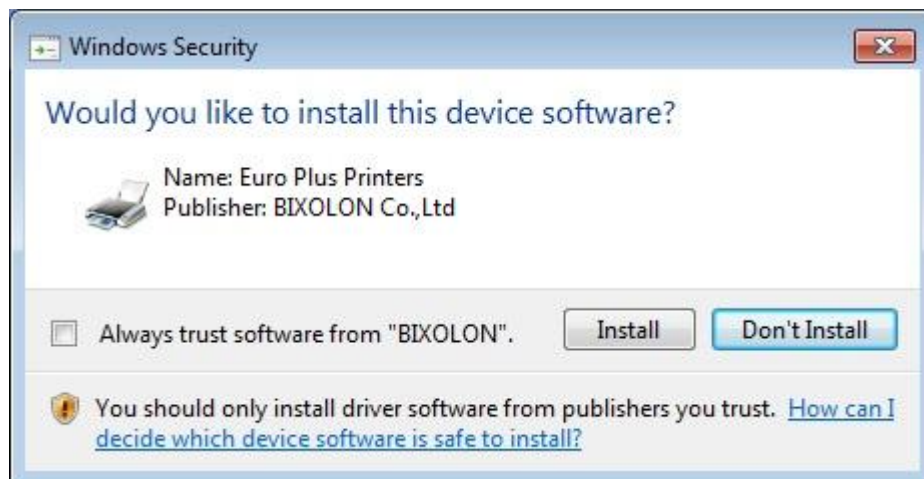
- 3) Click the “Next” button.



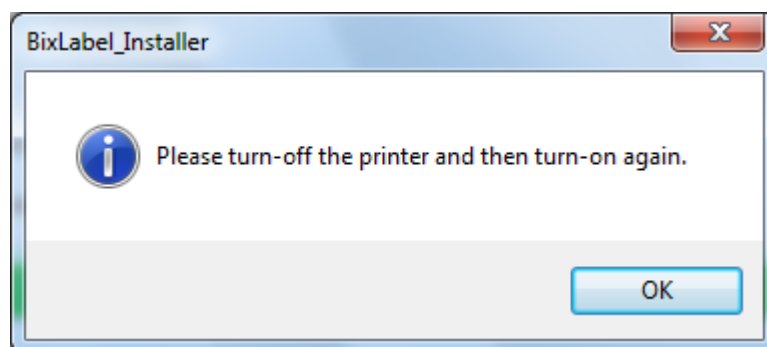
4) Select USB and click the "Next" button.



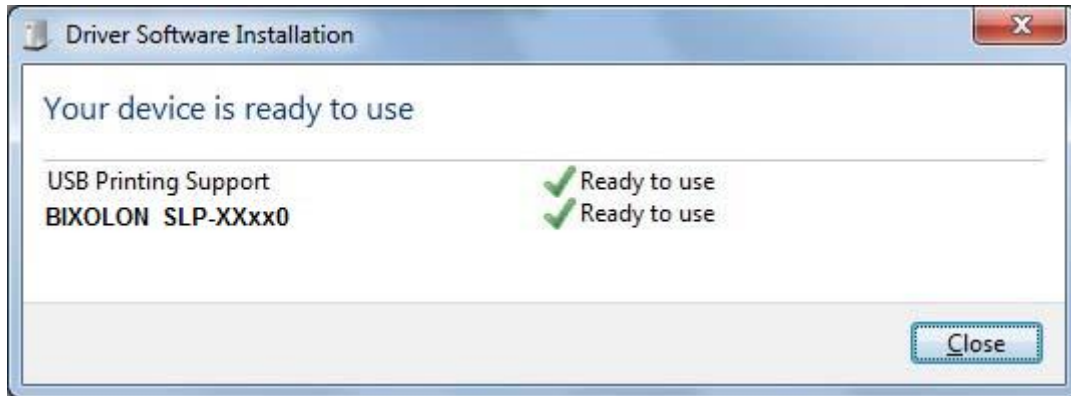
5) When the following message box appears, click the "Install" button.



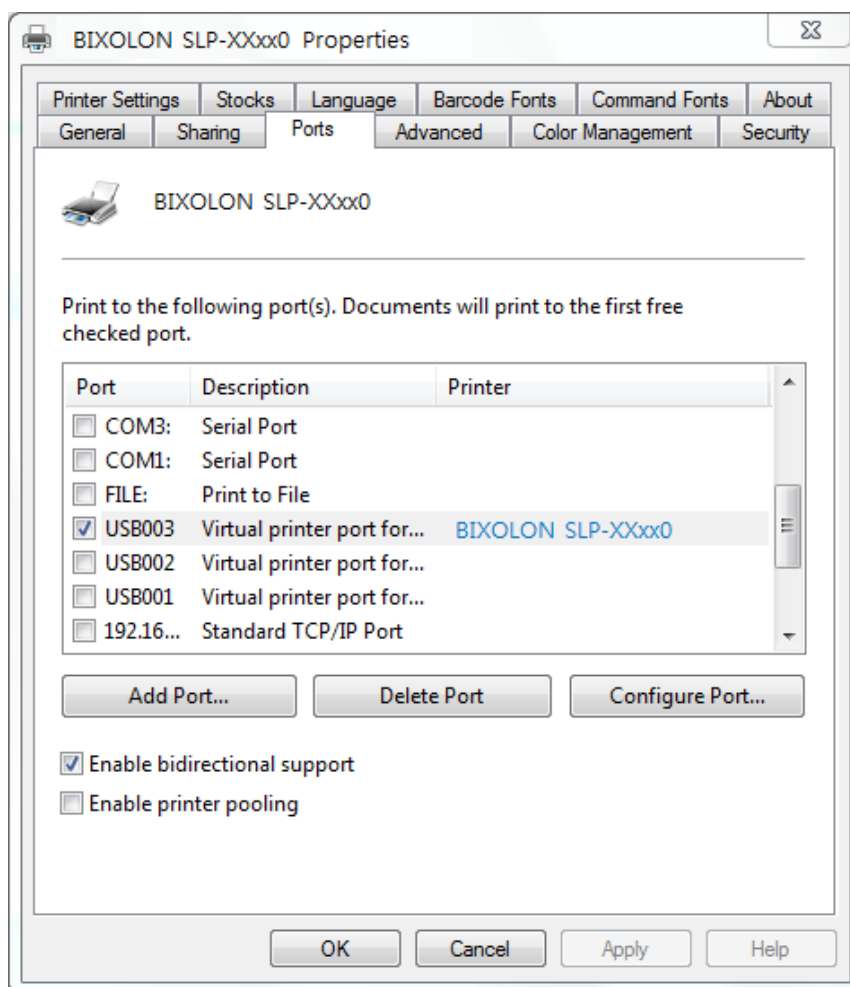
6) Click the "OK" button.



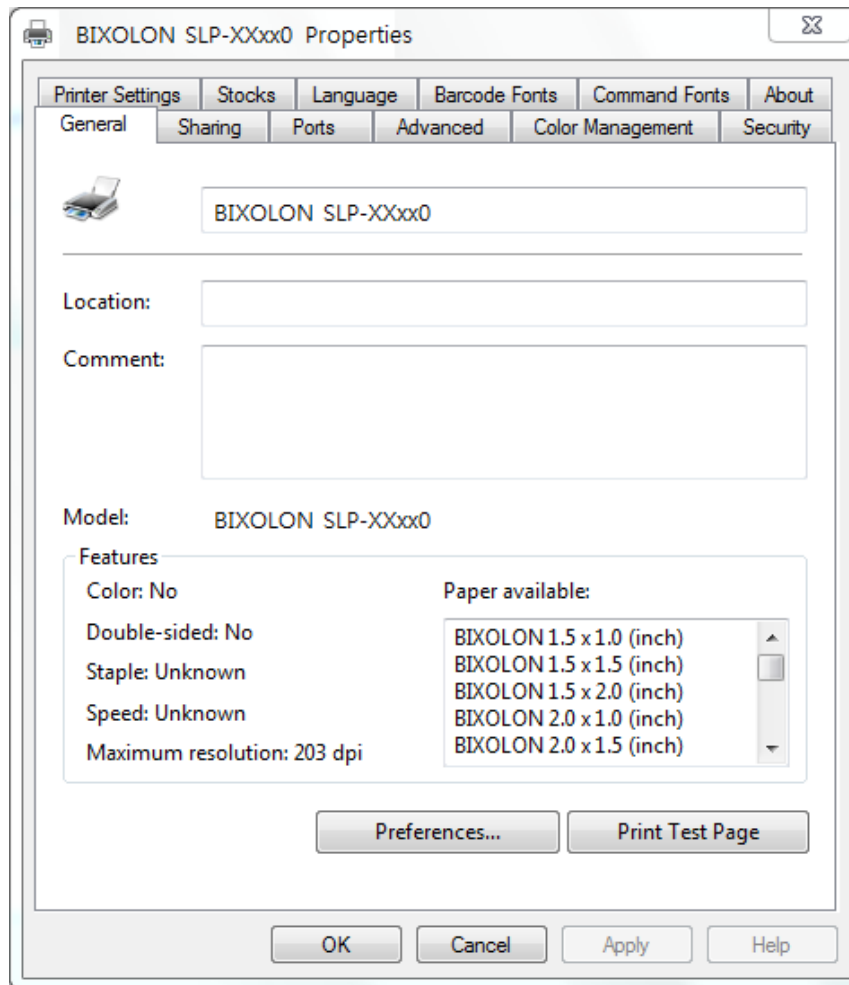
7) Turn on the printer.



8) The USB Port setting can be confirmed in the Windows Driver properties.



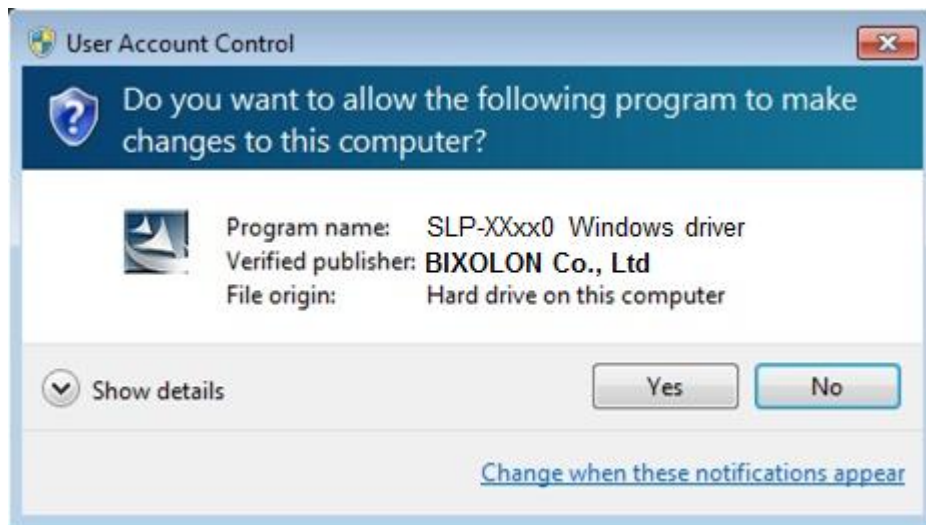
9) Click the “Print Test Page” button and check printing status.



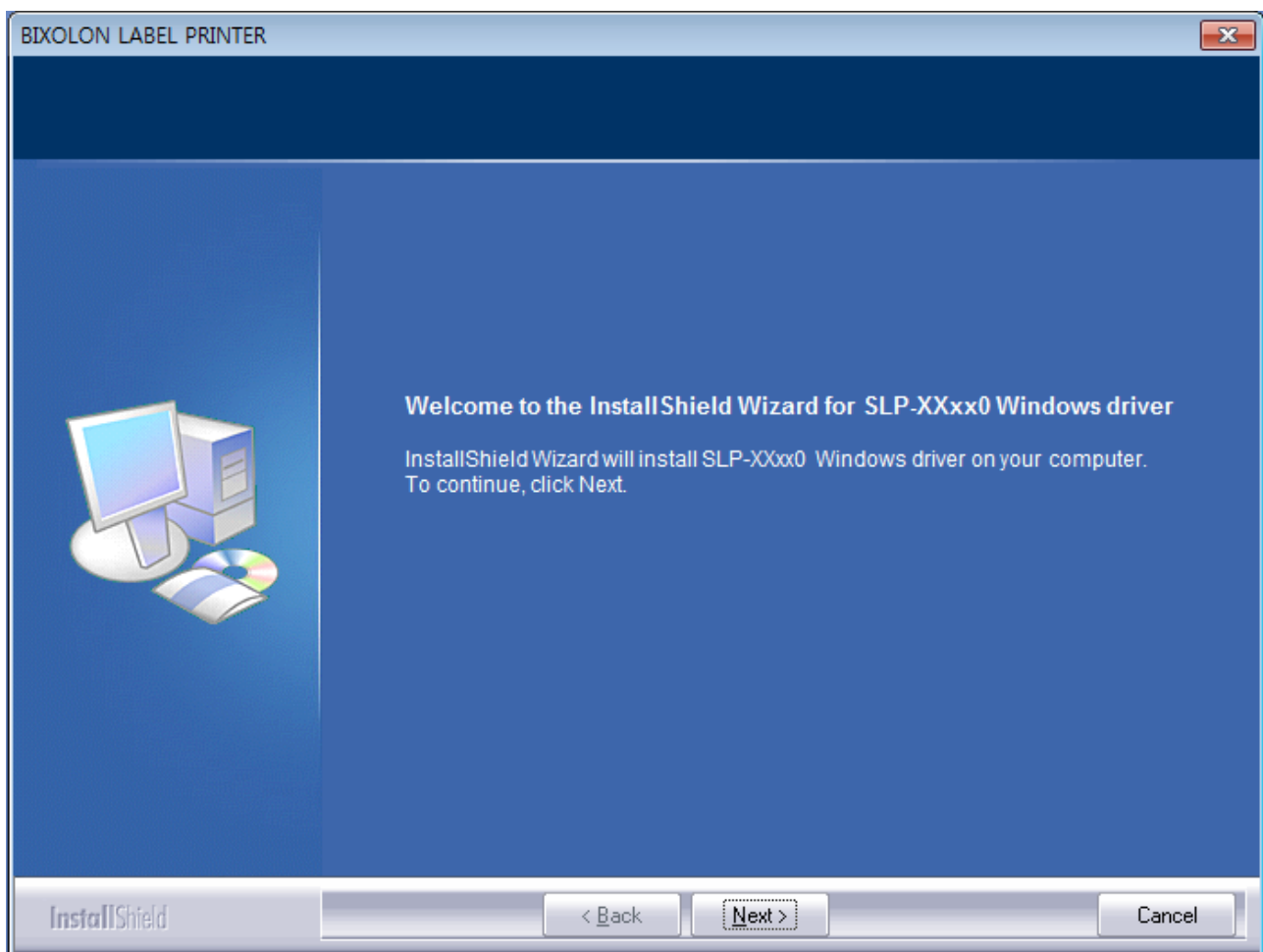
10) Proper installation of the driver is indicated if the test page is printed normally.

4-2-3 Via Network Port

- 1) Double-click the Windows Driver installation file.
- 2) Click the “Yes” button.

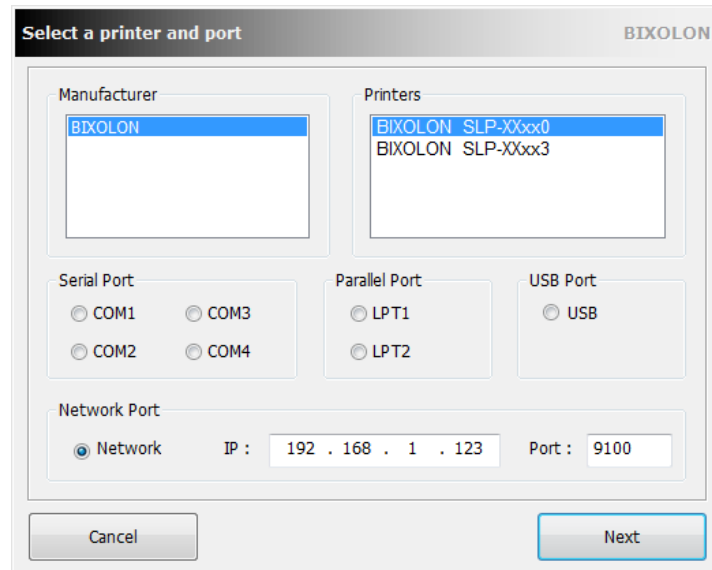


- 3) Click the “Next” button.

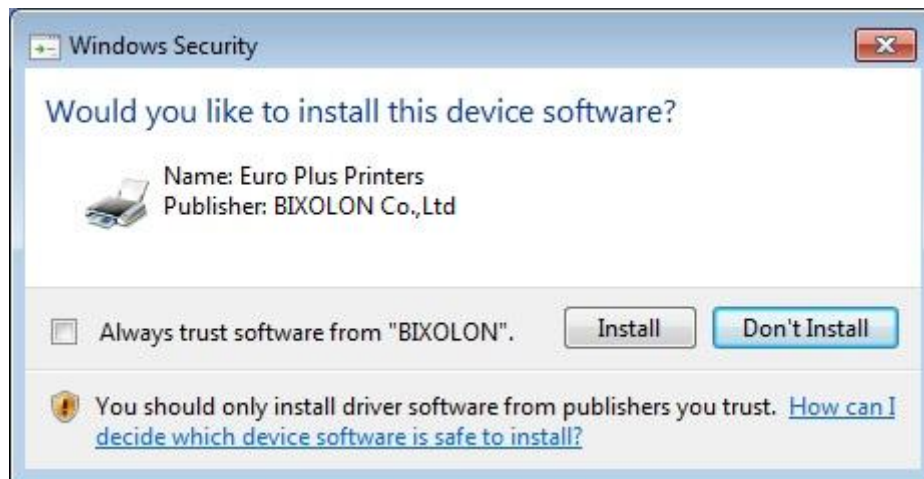


4) Select Network port.

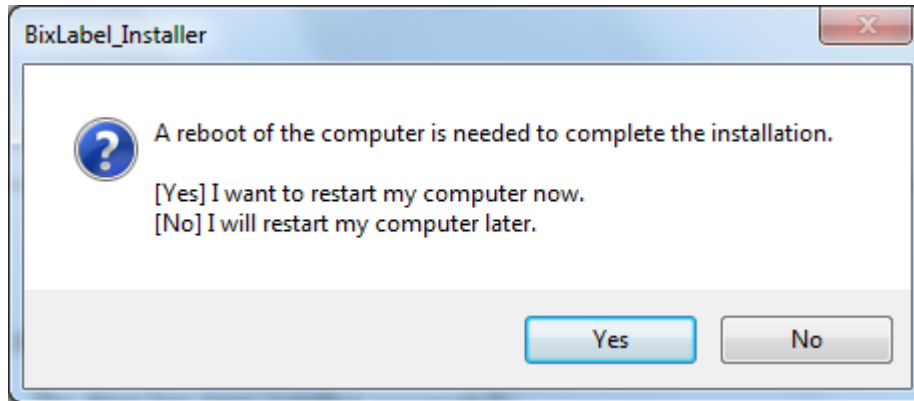
5) Type IP address and port number and then click “Next” button.



6) When the following message box appears, click the “Install” button.

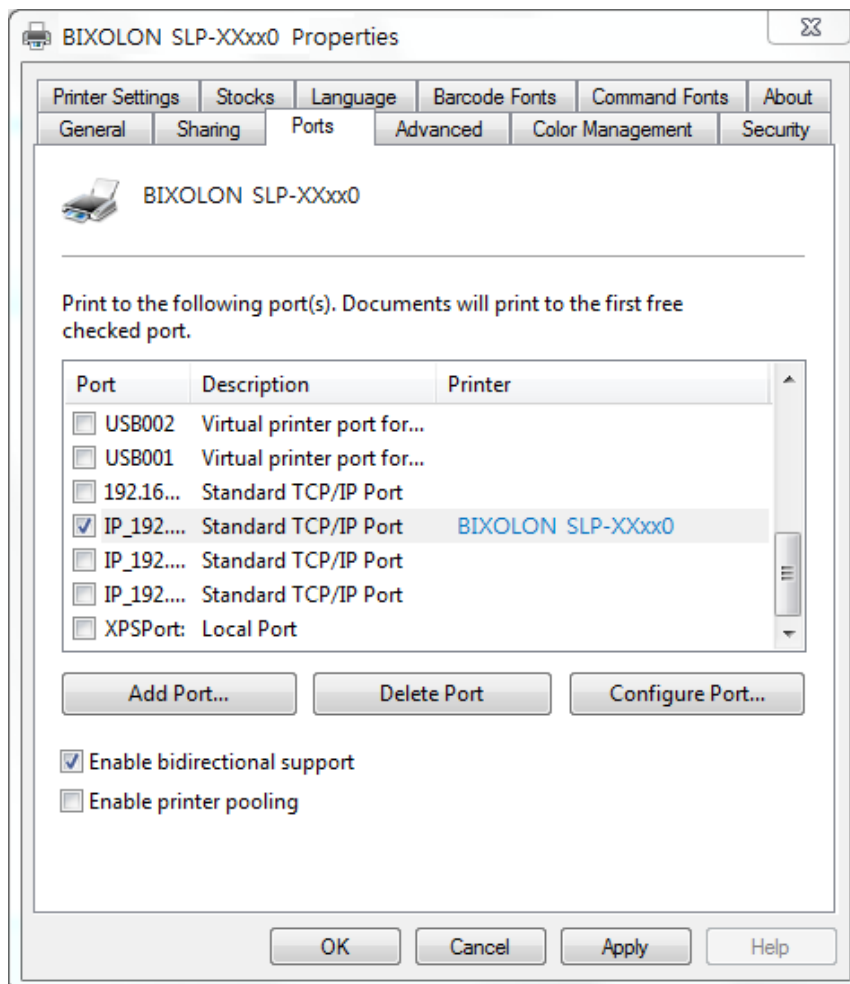


7) Clicking the "Yes" button will reboot the PC.

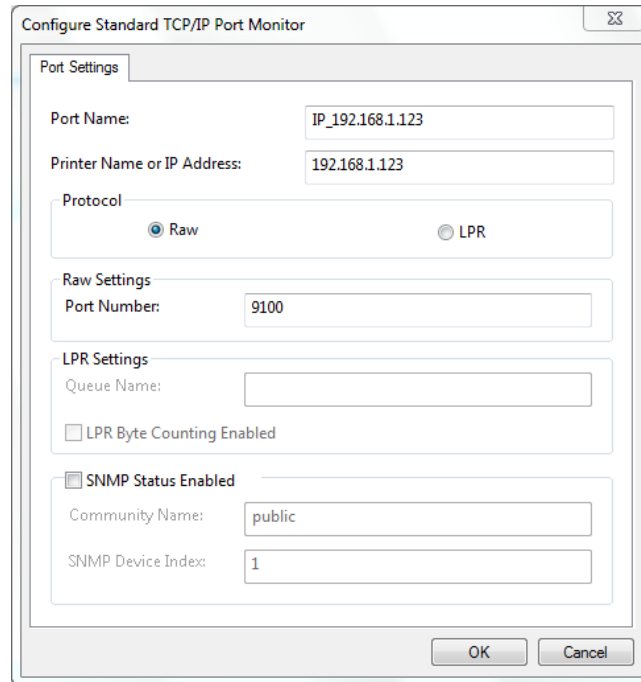


8) Open the printer properties window in the Windows OS.

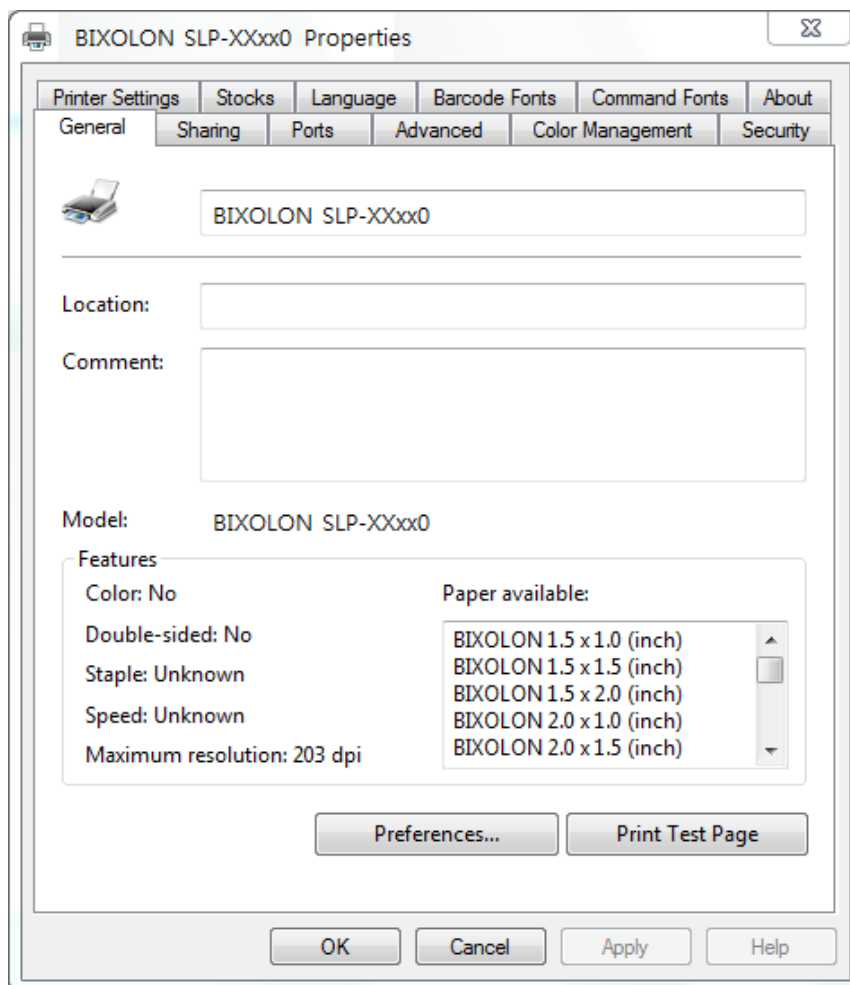
9) Click the "Port Settings" button in the "Ports" tab.



10) Match the communication settings to those of the printer.



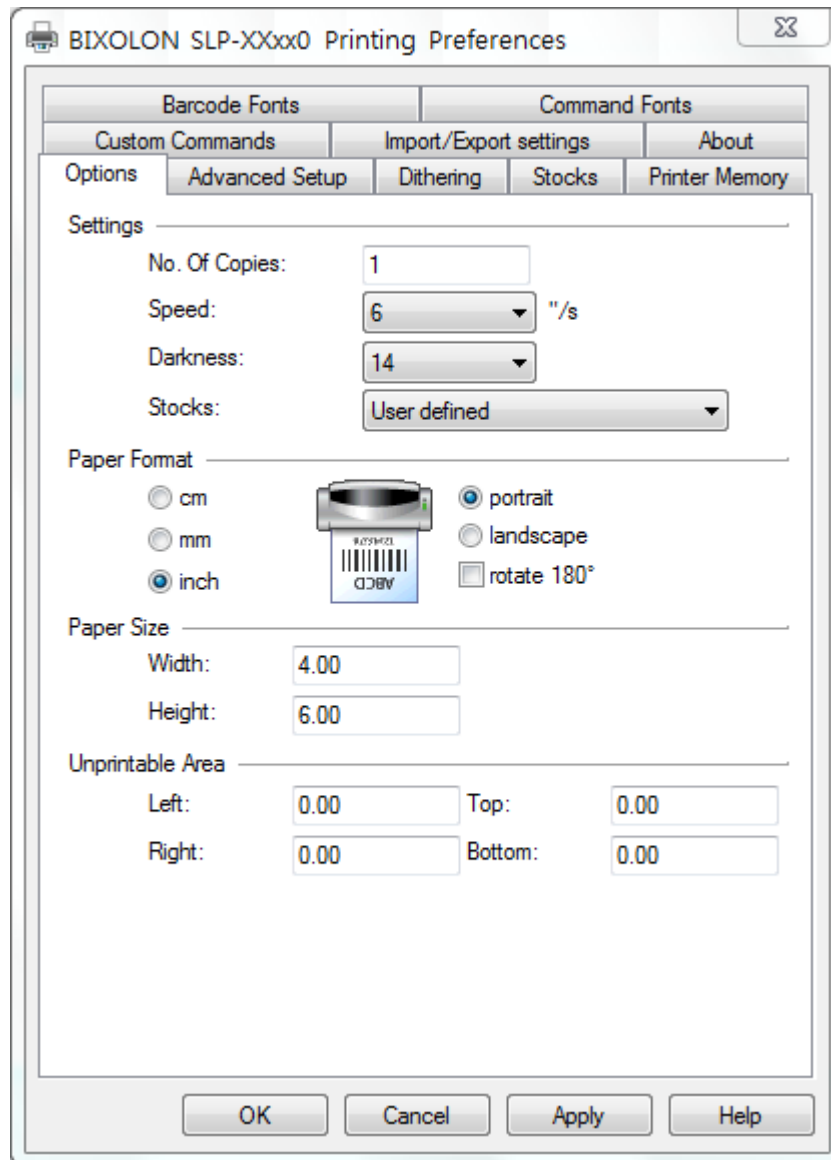
11) Click the “Print Test Page” button and check printing status.



12) Proper installation of the driver is indicated if the test page is printed normally.

5. Detailed Windows Driver Settings

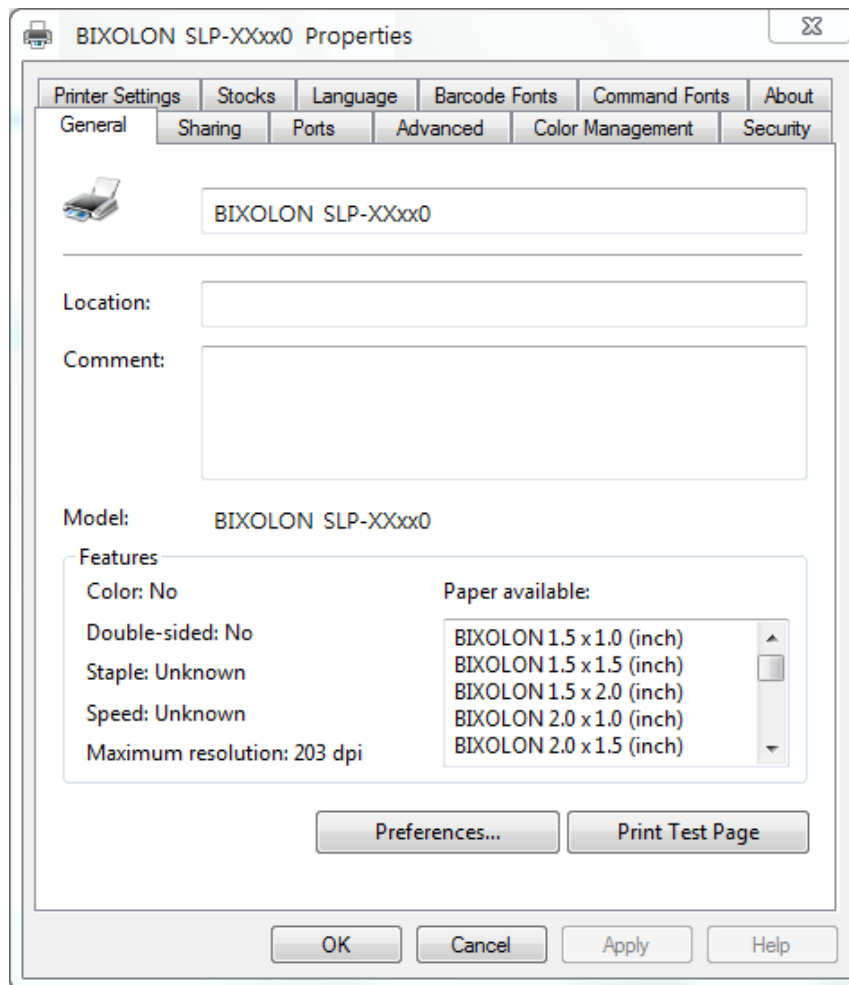
5-1 Printing Preferences



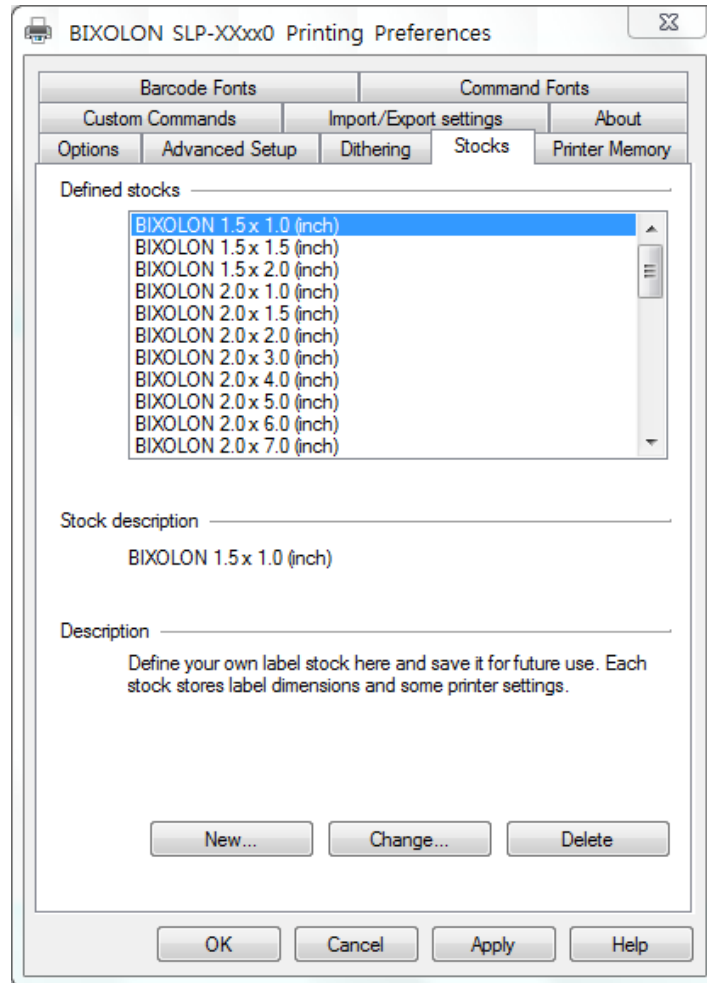
1	No. Of Copies	The number of copies
2	Speed	Set the printing speed
3	Darkness	The darkness level of printouts.
4	Portrait	The printer prints in portrait orientation.
5	Landscape	The printer prints in landscape orientation.
6	Rotate 180	The option of rotation 180 degree.
7	Width	Set the width of the paper.
8	Height	Set the height of the paper.
9	Unprintable Area	Set the unprintable area.

5-2 Adding new paper size

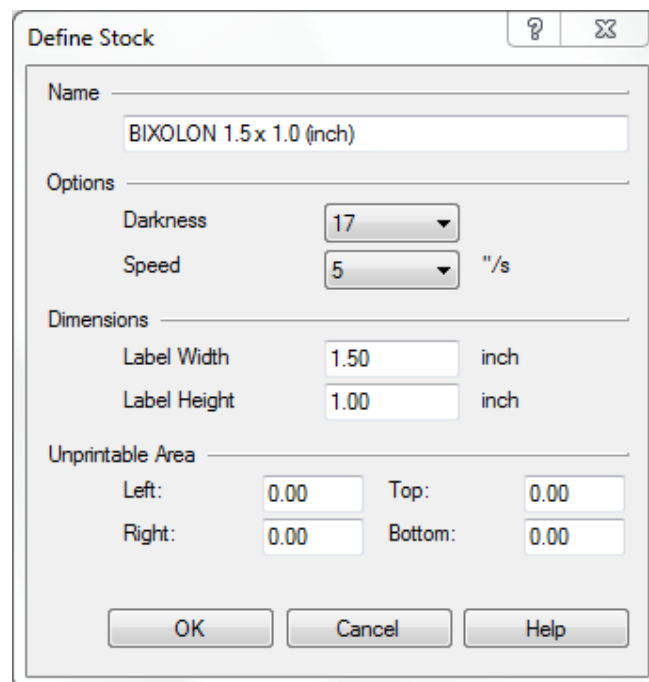
- 1) Click the “Preferences...” button



2) Click the “New” button.



3) Set a value you want and then click “OK” button.



6. Specifications

6-1 Resolution

Resolution	203 dpi	300 dpi
Model Name	SLP-TX420	SLP-TX423
	SLP-TX400	SLP-TX403
	SLP-DX420	SLP-DX423
	SLP-DX220	SLP-DX223
	SLP-T400	SLP-T403
	SLP-D420	SLP-D423
	SLP-D220	SLP-D223
	SRP-770II	

6-2 Paper Size

1.5 x 1.0 inch (38.1 x 25.4 mm)
1.5 x 1.5 inch (38.1 x 38.1 mm)
1.5 x 2.0 inch (38.1 x 50.8 mm)
2.0 x 1.0 inch (50.8 x 25.4 mm)
2.0 x 1.5 inch (50.8 x 38.1 mm)
2.0 x 2.0 inch (50.8 x 50.8 mm)
3.0 x 1.0 inch (76.2 x 25.4 mm)
3.0 x 1.5 inch (76.2 x 38.1 mm)
3.0 x 2.0 inch (76.2 x 50.8 mm)
3.5 x 1.0 inch (88.9 x 25.4 mm)
3.5 x 1.5 inch (88.9 x 38.1 mm)
3.5 x 2.0 inch (88.9 x 50.8 mm)
3.5 x 3.0 inch (88.9 x 76.2 mm)
3.5 x 4.0 inch (88.9 x 101.6 mm)
3.5 x 6.0 inch (88.9 x 152.8 mm)
4.0 x 1.0 inch (101.6 x 25.4 mm)
4.0 x 1.5 inch (101.6 x 38.1 mm)

4.0 x 2.0 inch (101.6 x 50.8 mm)
4.0 x 3.0 inch (101.6 x 76.2 mm)
4.0 x 4.0 inch (101.6 x 101.6 mm)
4.0 x 6.0 inch (101.6 x 152.8 mm)
4.0 x 8.0 inch (101.6 x 203.2 mm)
4.0 x 12.0 inch (101.6 x 304.8 mm)