

# interphone **F5MC**

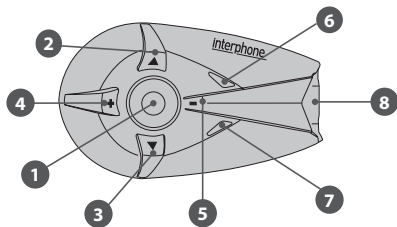
QUICK GUIDE **EN**



WE RECOMMEND YOU CHECK FOR SOFTWARE UPDATES ON THE WEBSITE [WWW.INTERPHONE.CELLULARLINE.COM](http://WWW.INTERPHONE.CELLULARLINE.COM)

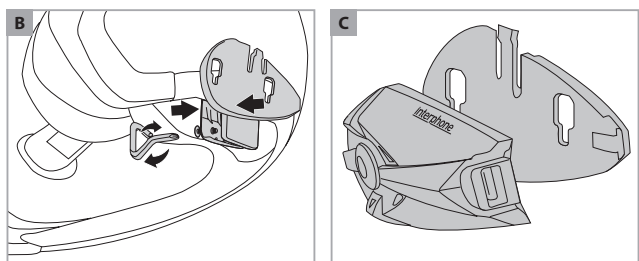
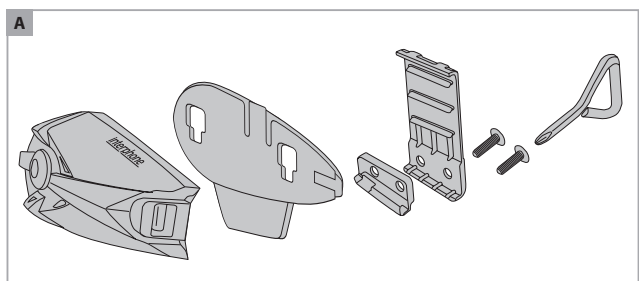
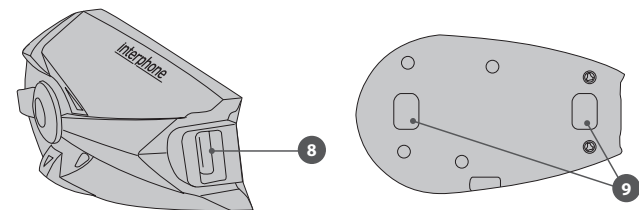


[www.interphone.cellularline.com](http://www.interphone.cellularline.com)



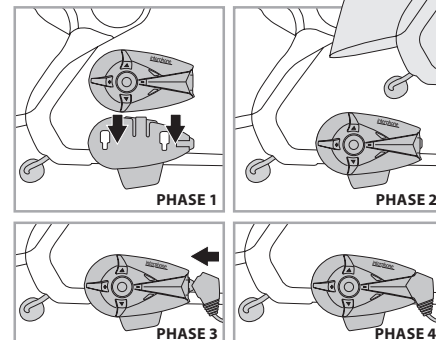
- 1 - MFB (multifunction button)
- 2 - Menu UP button
- 3 - Menu DOWN button
- 4 - + volume button
- 5 - - volume button
- 7 - Multifunction LED
- 7 - Multifunction LED
- 8 - Multifunction audio/data port
- 9 - Mounting guides for Bluetooth® module
- 10 - Charging/audio-in connector

\*see the user manual for complete instructions.



## ASSEMBLY OF THE SLIDE SUPPORT WITH REMOVABLE CLIP

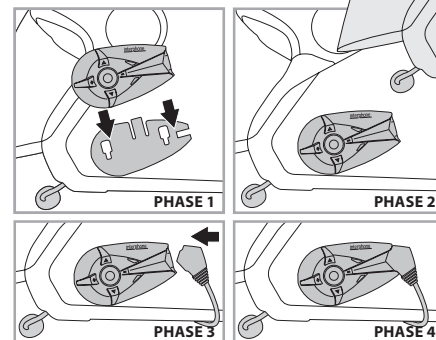
Take the support and note the best place to fasten it to the side of the helmet. Insert the rear part of the clip into the helmet and attach the other part on the outside.



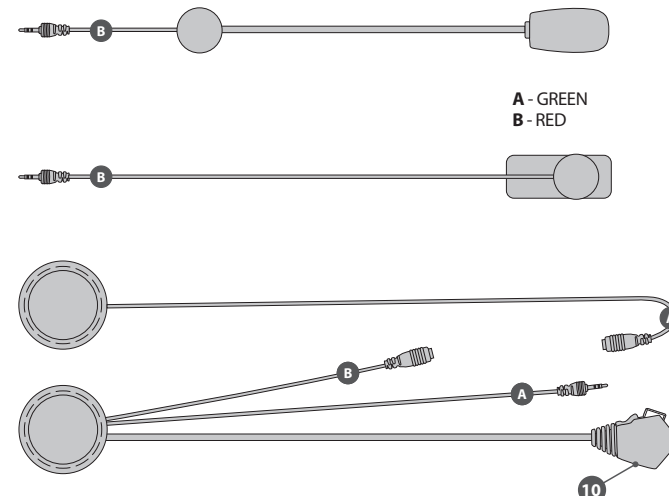
Insert the screws and tighten gently. Check position and move the support if necessary, by sliding it along. Tighten the screws with the screwdriver supplied. (images A/B)

## ASSEMBLY OF THE ADHESIVE SLIDE SUPPORT

Take the adhesive support and look for the best side and place to position it. Clean and de-grease the part of the helmet where you are going to stick the support (do not use any detergents that could damage the helmet's finish).



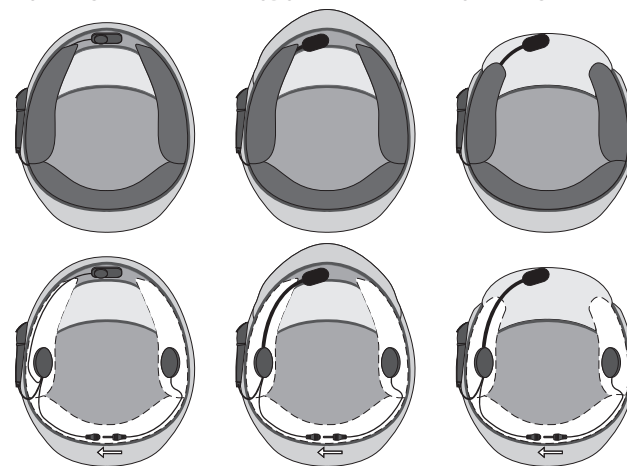
Remove the protective film from the double sided tape, and apply the support to the helmet. As the support cannot be moved once it is attached to the helmet, take great care with its positioning when applying. (image C)



MOUNTING ON FULL-FACE HELMET

MOUNTING ON MODULAR HELMET

MOUNTING ON OPEN-FACE HELMET

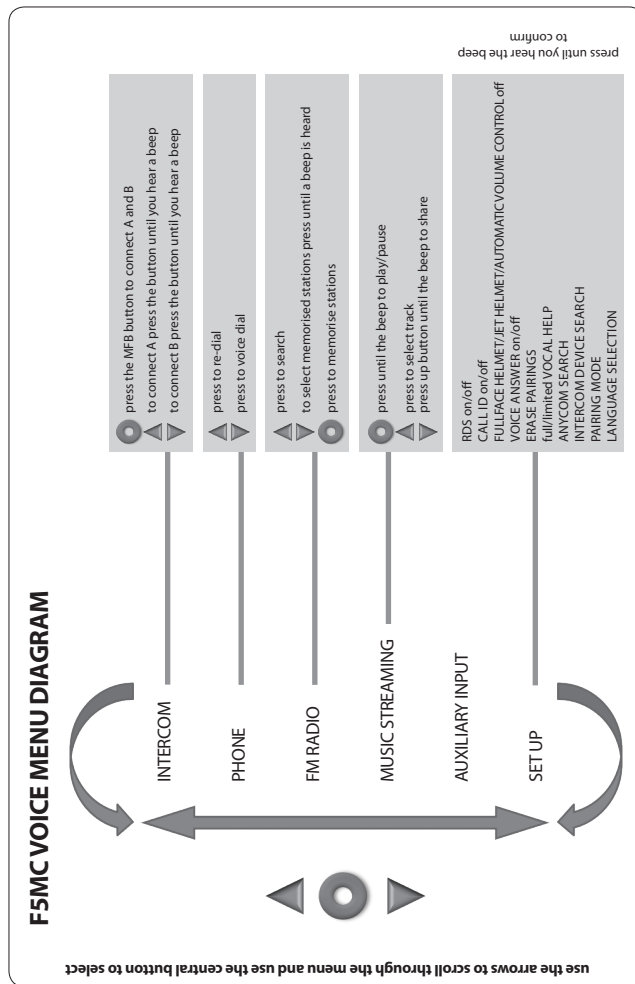


MOUNTING ON FULL-FACE HELMET



MOUNTING ON MODULAR AND OPEN-FACE HELMETS

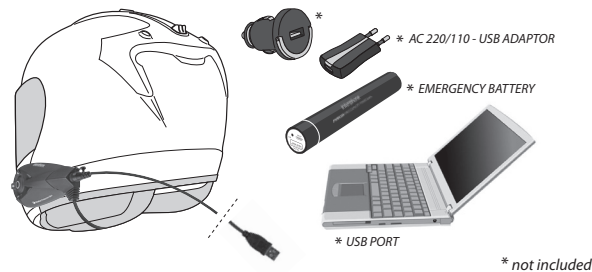




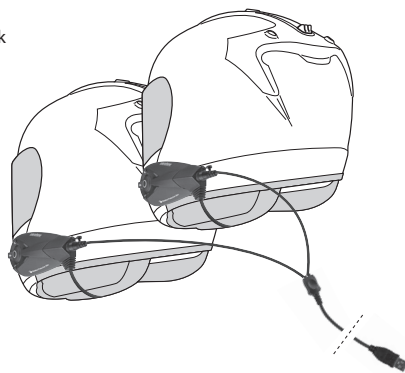
Thank you for choosing our products.  
Before using this product, we recommend you carefully perform the operations outlined in this Quick Guide.

### Chapter 1 - Charging

Insert the recharging cable in the audio connector kit as shown in the figure. Insert the other end of the cable in a standard USB port.



With the double jack you can charge two Interphone MCs at the same time.



The LED lights up yellow/orange during charging.  
The LED turns green when charging is complete.  
When charging is complete, disconnect the units from the charger by pulling out the jack plug, and also unplug the charger from the outlet.

### 1a - Turning on for the first time (only with the double control unit version)

To turn on the device, press the MFB button (1) on both control units. The control units are pre-linked direct from the factory. When first switched on the two control units will go into standby mode (INTERCOM menu).

### 1b - Turning on for the first time (with the single control unit version)

To turn on the device, press the MFB button (1). Wait for the voice message in the correct language; confirm the language selection with a quick press of the MFB button (1).

The device will go into "PAIRING MODE" at which point the following choices can be made:

- A short press of the MFB button (1) - telephone or GPS pairing.
- A short press of the UP button (2) - Interphone intercom pairing.
- A short press of the DOWN button (3) - pairing with a third party intercom (ANYCOM).
- A long press of the MFB button (1) until you hear a beep - this cancels "PAIRING MODE". The device goes into standby mode (INTERCOM menu) and the blue LED flashes slowly.

### TURNING OFF

To turn off the device hold the MFB button the voice message "INTERPHONE POWERING DOWN" is heard at which point the red LED will remain on.

### Chapter 2 - Select your language (after turning the unit on for the first time):

With the F5MC in standby mode, go to the SETUP menu and select "LANGUAGE SELECTION". Wait for the voice guide to speak in your language and then press the central MFB button (1) to confirm the selection.

If the WRONG language is selected then follow this procedure:

1. Turn off the F5MC
2. Turn the F5MC on again
3. Briefly press the UP button
4. Briefly press the MFB button
5. Briefly press the UP button
6. When you hear the guide voice speak in your language press the MFB button.

### Chapter 3 - Telephone or GPS pairing. Use one of the following procedures:

- a) With the F5MC turned off, press the central MFB button (1) for 5 seconds until the two red and blue LEDs flash alternately. Briefly press the central button again and turn on the Bluetooth® function on your telephone or GPS device. Search for new devices and select INTERPHONE.
- b) With the F5MC in standby mode go to the SETUP menu. Select "PAIRING MODE" and press the central MFB button (1) until you hear a beep. Turn on the Bluetooth® function on your telephone or GPS device. Search for new devices and select INTERPHONE.

### Chapter 4 - Interphone Intercom pairing. Use one of the following procedures:

- a) With the F5MC turned off, press the central MFB button (1) for 5 seconds until the two red and blue LEDs flash alternately and then press the upper button. The device will begin to search for a second Interphone device. Make sure that the second Interphone device is in "PAIRING MODE" (blue and red LEDs flashing alternately, as indicated in Chapter 3/b).
- b) With the F5MC in standby mode go to the SETUP menu. Select "INTERCOM DEVICE SEARCH" and press the central MFB button (1) until you hear a beep. The device will begin to search for a second Interphone device. Make sure that the second Interphone device is in "PAIRING MODE" (blue and red

LEDs flashing alternately, as indicated in Chapter 3/b).

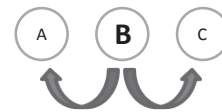
To activate or deactivate the connection press the central key on one of two F5MC devices.

Repeat the same procedure to pair another unit and have a conference group.

### Chapter 5 - Anycom - Third party intercom pairing. Use one of the following procedures:

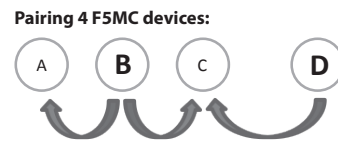
- a) With the F5MC turned off, press the central MFB button (1) for 5 seconds until the two red and blue LEDs flash alternately and then press the lower button. The device will begin to search for a second NON Interphone device. On the second NON Interphone device activate the search for another telephone; refer to the relative user manual if necessary. The F5MC begins to search for a second third-party device (NON Interphone device).
- b) With the F5MC in standby mode go to the SETUP menu. Select "ANYCOM SEARCH" and press the central MFB button (1) until you hear a beep. The F5MC begins to search for a second third-party device (NON Interphone device). On the second NON Interphone device activate the search for another telephone; refer to the relative user manual if necessary. Repeat the same procedure to pair another (NON Interphone) device and have a conference group.

### Chapter 6 - Pairing of 3 or 4 Interphone F5MC devices:



#### Pairing 3 F5MC devices:

Pair A with B using the procedure described in Chapter 4.  
Then pair B with C using the procedure described in Chapter 4.  
To start a conversation press the central button of user B.



After having paired the three devices as described above, pair C with D using the procedure described in Chapter 4.

Start a conversation between three devices (ABC) then press the central button of user D to start add the fourth user to the conversation.

For the complete user manual please consult our website  
[www.interphone.cellularline.com](http://www.interphone.cellularline.com)

Technical Specifications			
Bluetooth® compliance:	Bluetooth® V.3.0 - Class II		
Supported Bluetooth® profiles:	HFP	A2DP	AVRCP
Dimensions mm:	60x80x30		
Weight:	44g		
Range:	Up to 10 metres		
Talk time:	12h		
Stand-by time:	700h		
Charging time:	3h		
Battery type:	Rechargeable Li-ion		



#### EQUIPMENT DISPOSAL INSTRUCTIONS FOR DOMESTIC USERS

(Applicable within the European Union and those countries with separate collection systems)  
The marking shown on the product or its literature indicates that at the end of its life the product should not be disposed together with other household waste. To prevent possible harm to the environment or human health from uncontrolled waste disposal, please separate this from other types of wastes and recycle it responsibly to promote the sustainable reuse of material resources.

Domestic users are invited to contact the sales point where the product was purchased or the local office with information regarding recycling of this type of product. Business users should contact their supplier and check the terms and conditions of the purchase contract. This product should not be mixed with other commercial waste for disposal purposes.

This product has an embedded, non-replaceable battery, do not attempt to open the product or remove the battery as this may cause injury and damage the product. When disposing of the product, please contact your local waste disposal service in order to remove the battery. The battery contained within the device and been designed to be used throughout the life cycle of the product.

CE 0560

This product is CE marked in accordance with the provisions of the R&TTE Directive (1999/5/EC) and the RoHS Directive (2011/65/EU). With this CE mark Cellular Italy S.p.A. declares that this product complies with the essential requirements and other relevant provisions of the 1999/5/EC and 2011/65/EU Directives. The user is forbidden to make changes or modifications of any kind to this device. Changes or modifications not expressly approved by Cellular Italy S.p.A. will void the user's authorisation to operate the device. Bluetooth® is a trademark owned by Bluetooth SIG, Inc.

For more information please visit the website: [www.interphone.cellularline.com](http://www.interphone.cellularline.com)