

INDEX

1 General Information	
1.1 - How to get through the User Guide correctly	2
1.2 - Safety and Security Precautions	2
1.3 - Identification Plate	3
1.4 - Technical Assistance	3
2 Unpacking and Handling	
2.1 - Handling and Transport	4
2.2 - How to unpack the Suction Unit	5
2.3 - Control of the Accessories	6
3 Description of the Suction Unit	
3.1 - Operating Principles	7
3.2 - Allowed and restricted Use	8
3.3 - Compliance with EEC Regulations in force	8
3.4 - Security Provisions	8
3.5 - Noise Level	8
3.6 - Construction Features	9
3.7 - Technical Features	10
3.8 - Control Panel Description	11
4 Installation	
4.1 - Safety Measures	12
4.2 - Place of Installation	12
4.3 - Installation Surface	12
4.4 - Installation Options	12
4.5 - Wall Fitting with JOLLY BOX	13
4.6 - Wall Fitting without JOLLY BOX	15
4.7 - Electrical Connection	20
5 How to use the Suction Unit	
5.1 - Use of the Suction Unit	21
5.2 - Starting of the Suction Unit	22
6 Maintenance	
6.1 - Programmed Maintenance	23
6.2 - Dust Bag Replacement	24
7 Servicing	
7.1 - Servicing Criteria	27
8 Recommended Spare Parts	
8.1 - Spare Parts List	27
9 Dismantling and Disposal	
9.1 - General Provisions	27
10 Technical Problems	
10.1 - Troubleshooting	28

1 - GENERAL INFORMATION

1.1 How to get through the user guide correctly

The user guide of JOLLY and JOLLY CONTACT suction units is a fundamental document issued by the manufacturer, and must be considered an integral part of the suction unit.

In case of resale, offering or lease to third parties, the user guide must be handed over to the new user or to the new owner together with the original packing. We recommend storing and keeping the user guide safely and carefully throughout the entire operating life of the suction unit.

The main purpose of the user guide is to provide a correct knowledge of the suction unit in order to get the best performances and keep the central suction unit at its best operating and safety conditions.

It is absolutely forbidden to duplicate, copy or release any part of this user guide without previous written authorization by TECNOPLUS s.r.l., owner of the SISTEM-AIR trade mark. TECNOPLUS s.r.l. reserves the right to improve or modify the suction unit at any time without previous notice.

1.2 Safety and security precautions

Read carefully any information detailed in this user guide about the installation, use and maintenance of the suction unit.

Make sure that the suction unit has been correctly grounded.

Never use the suction unit improperly.

Instantly unplug the suction unit when:

- the suction unit has been exposed to the inclemency of the weather or to excessive moisture;
- the suction unit has been damaged by an impact or when the packing/container has been damaged;
- the suction unit requires any repairing or overhauling.

Always wear protection gloves when carrying out any maintenance operation, when replacing the dust bag, and when replacing/cleaning the motor filter. Use only original SISTEM AIR spare parts.

Never use this suction unit to remove textile stuff, big-size bits and pieces of any material, burning coals or ashes.

Never use this suction unit to remove liquids.

Use the suction unit only with the dust bag correctly assembled.

Use the suction unit only with the dust bag container correctly assembled.

Never use the suction unit without the lower cover.

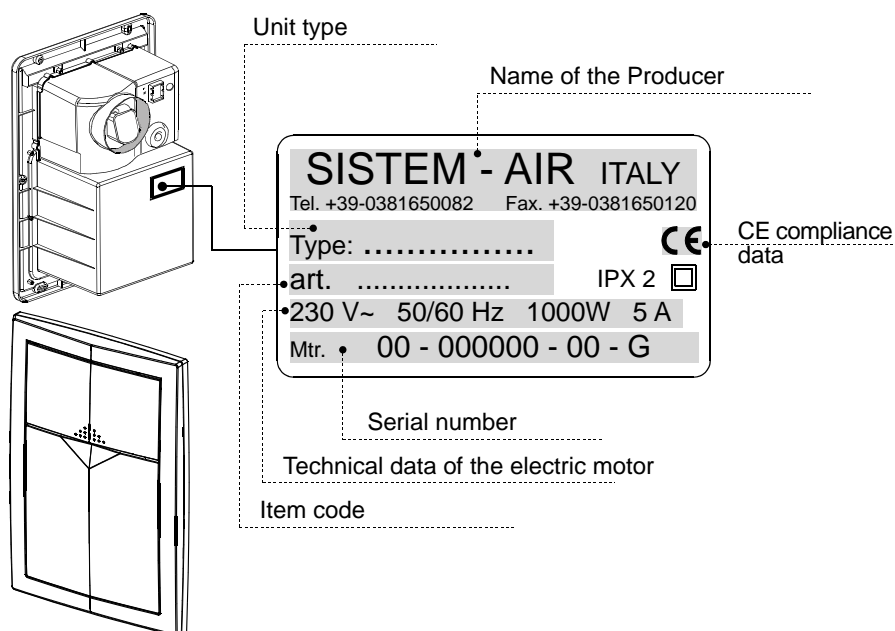
Never block the external exhaust pipes of the air blown by the motor.

Never touch the suction accessories with any part of the body, when the unit is working.

Switch-off the suction unit if you are not going to use the suction unit for a short time.

If you are not going to use the suction unit for an extended period of time, it is advisable to disconnect (JOLLY CONTACT only) from the mains power supply.

1.3 Identification plate



English

1.4 Technical Assistance

For any technical information you may need, call the Producer's Technical Service or Authorized Center. Always specify the technical data indicated on the identification plate as well as the serial number of the suction unit.

Technical Service Provider

Authorized Technical Assistance Center

2 - UNPACKING AND HANDLING

2.1 Handling and Transport

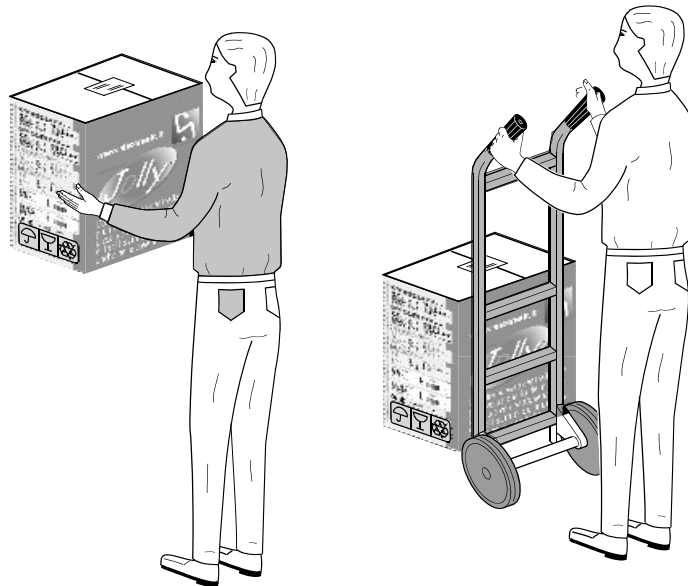
WEIGHT OF THE CARDBOARD BOX:.....Kg 4,5
OVERALL DIMENSION OF THE CARDBOARD BOX:.....cm 35x48x24

Arrange the packing (still-unopened) on the installation site following the instruction detailed on the cardboard box.

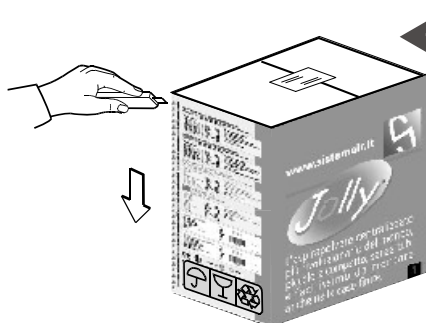
Considering the small size and the limited weight, no special handling/transport means are to be considered essential.

If necessary, use a trolley to move the unit or ask somebody to help you.

English



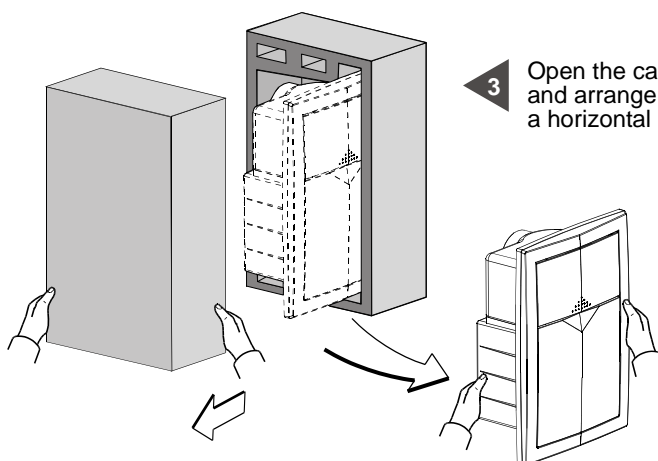
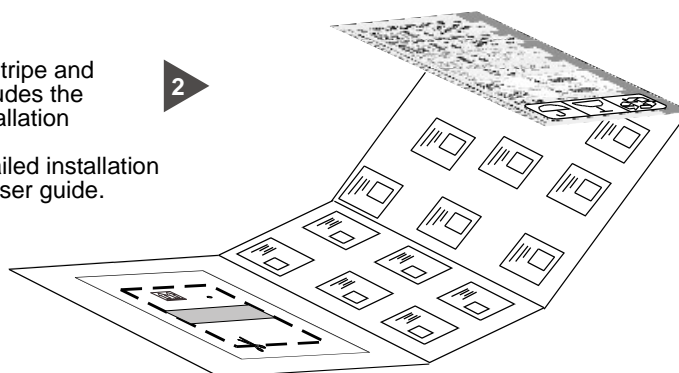
2.2 Unpacking



1 Arrange the cardboard box on the floor. Follow the line indicated by the arrows and cut the cardboard stripe containing the protection polystyrene casing.

ATTENTION!: DO NOT DESTROY THE CARDBOARD STRIPE SINCE IT CONTAINS INSTALLATION INSTRUCTIONS AND TEMPLATE.

Remove the cardboard stripe and keep it safe, since it includes the **TEMPLATE** and the installation instructions.
NOTE: You can find detailed installation instructions also in this user guide.



3 Open the cardboard box, lift the unit and arrange it on the floor in a horizontal position.

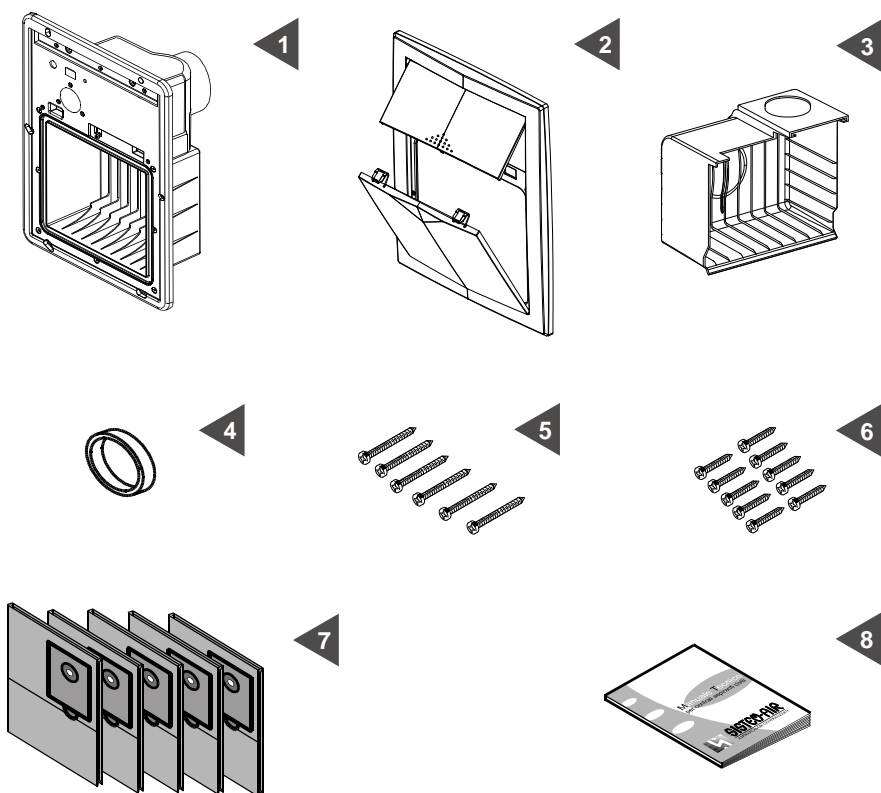
4 Take out all the accessories contained in the cardboard box and dispose the packing material in compliance with the relevant provisions in force.
ATTENTION !: Keep the cardboard stripe.

English

2.3 Control of the accessories

Check the contents:

- 1 - N° 1 suction unit.
- 2 - N° 1 frame provided with upper and lower covers.
- 3 - N° 1 dust bag container.
- 4 - N° 1 sponge for connection to JOLLY BOX casing or to air exhaust extension.
- 5 - N° 6 Ø 3x35 screws for fixing the suction unit to JOLLY BOX casing or to wall.
- 6 - N° 10 Ø 3x14 screws for fitting the frame to the suction unit.
- 7 - N° 5 dust bags (spare).
- 8 - N° 1 installation, use and servicing guide.



Check that the suction unit and the relevant accessories do correspond to the items you have ordered:

Make sure that the suction unit and the relevant accessories have not been damaged during the handling. In this case, you should inform immediately the Producer's Assistance Service.

3 - DESCRIPTION OF THE SUCTION UNIT

3.1 Operating principles

JOLLY and JOLLY CONTACT suction units, suitable for any kind of residential building (house, office, hotels, service buildings) consist of a SUCTION UNIT that it can be build in external walls.

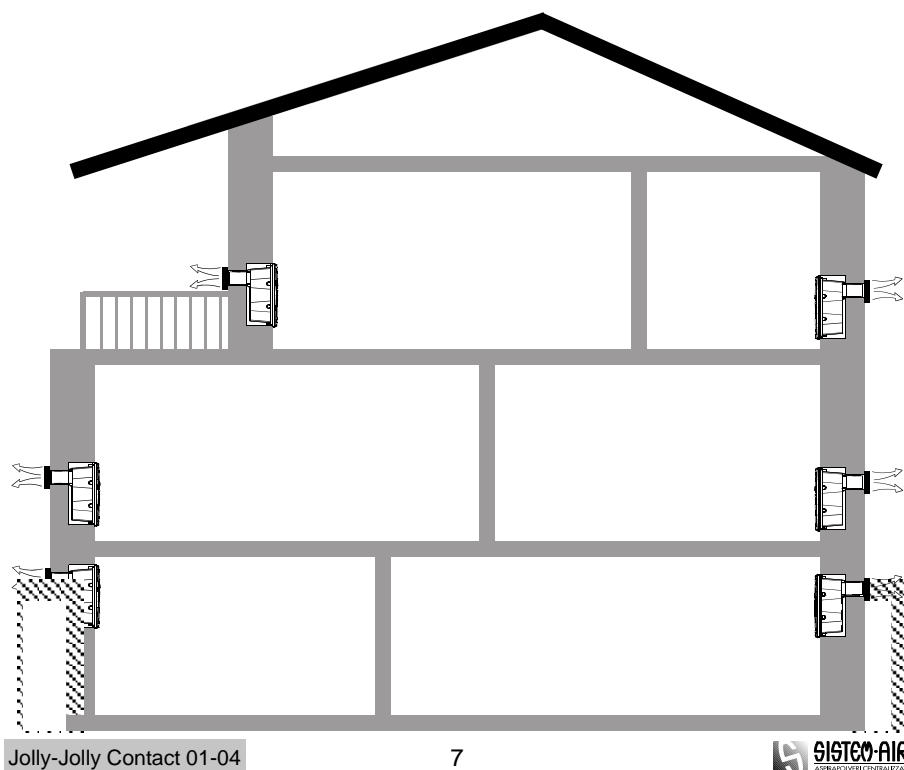
The units can be fitted in finished houses as well as in buildings still under construction. JOLLY and JOLLY CONTACT suction units DO NOT REQUIRE any pipe network to be installed.

The suction unit operates according to the principles of a traditional vacuum, with the dust conveyed and collected in a dust bag assembled inside the unit. In this suction unit the air and the dust particles are expelled (a standard feature in centralized systems). The suction unit can be positioned in the external walls of any room, in order for air, dust mites and micro-dust to be expelled.

To start the suction unit:

- Mod. JOLLY: press the "start" key on the control panel of the suction unit.
- Mod. JOLLY CONTACT: 1)Fit the coupling of the electrified hose into the special housing of the suction unit. 2)Plug the suction unit to the main power supply by pressing the "start" key on control panel. 3)Move to "I" the switch on the handle of the electrified hose after .

English



3.2 Allowed and restricted use

SISTEM-AIR suction unit models «JOLLY » and « JOLLY CONTACT » have been especially designed for wall installation to remove dust, small-sized solid bits and pieces and dry materials.

The suction units have not been designed to remove textile stuffs, large-sized bits and pieces, burning and hot materials.

Never remove liquids!

It is strictly forbidden to use these suction units in order to remove highly explosive materials such as gun powder or inert materials for example, which can cause dangerous chemical reactions if removed separately and then mixed up in the dust container.

It is strictly forbidden to use these suction units in explosion hazard places or in places where temperature, pressure and moisture are not in normal level. The manufacturer declines all responsibility for damages to persons or objects due to an improper use of the units.

Any use different from the ones expressly indicated is strictly forbidden.

Any modification or adjustment of the suction unit in order to remove a specific material must be approved by the builder, by means of written authorization.

Any use different from the original is to be considered improper and health risks for the user and damage to the suction unit cannot be excluded.



3.3 Compliance with EEC Regulations in Force

SISTEM-AIR suction units mod. "JOLLY" and "JOLLY CONTACT", which are the objects of this user guide, fully comply with the requirements and the relevant provisions of the EEC directives detailed hereunder:

98/37/CEE – Machine Directive (former 89/392/CEE)

73/23/CEE – Low Tension Directive (and following modifications)

89/336/CEE – Electromagnetic Consistency Directive (and following modifications)

3.4 Security Provisions

The suction units SISTEM-AIR mod. "JOLLY" and "JOLLY CONTACT", which are the objects of this user guide are equipped with:

- Motors provided with security thermal relay, which turns on and switches-off automatically the suction units when the temperature exceeds specified level.
The motor restarts automatically after cooling.
- 10A 250V security motor delayed fuse for suction unit protection.

3.5 Noise level

The suction units never exceed 70 dB (A)

NOTE: the noise level refers to the noise issued by the equipment; it does not refer to user's exposure, which can be affected by many other different factors.

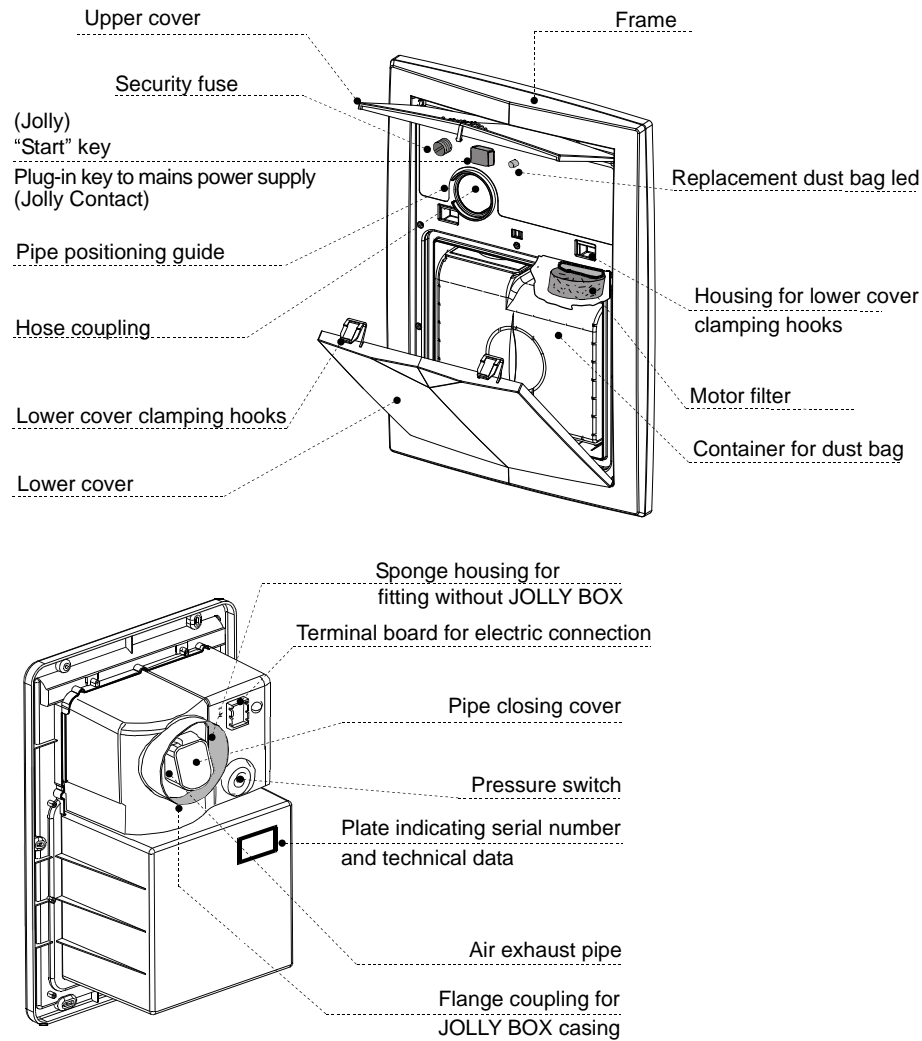
3.6 Construction features (see picture)

The single-phase suction units for the civil sector included in the JOLLY product line can be divided in two main categories:

- JOLLY Line
- JOLLY CONTACT Line

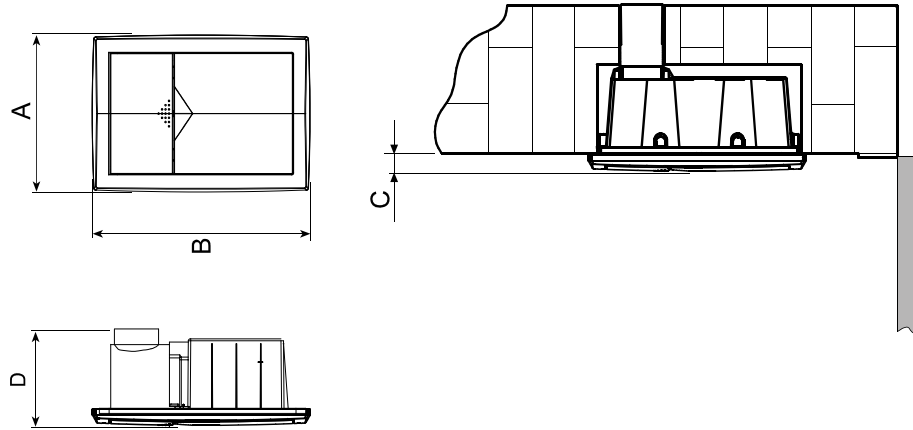
The two product lines, equipped with the same motor power, feature the same construction technology and grant the same performances.

The JOLLY CONTACT line suction units are equipped with an electrified hose featuring the start control on the handle.



3.7 Technical features (see picture and table)

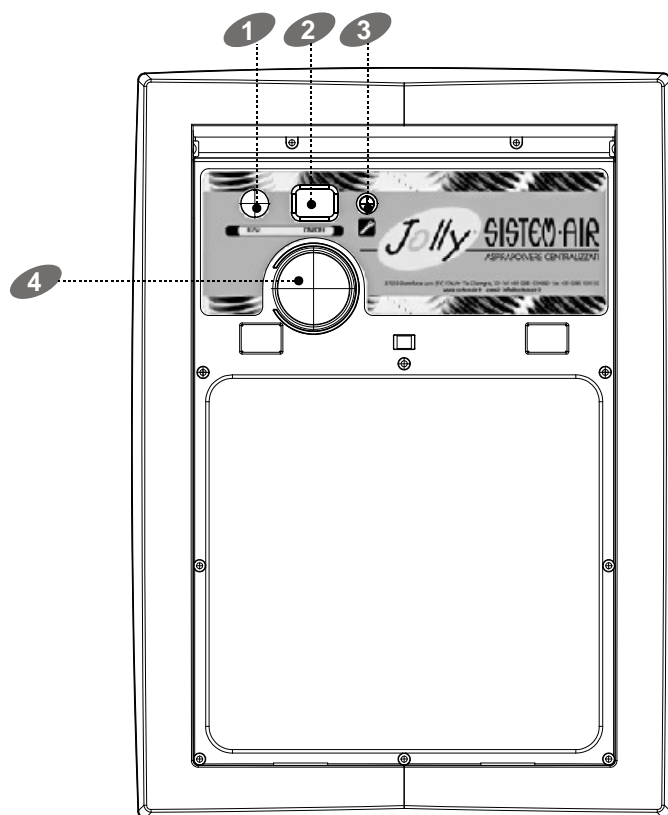
English



Technical features		JOLLY Item 8710.0	JOLLY CONTACT Item 8720.0
Coupling for electrified hose		NO	YES
Suction coupling	Ø mm	40	40
Protection degree	IPX	2	2
Isolation			
Power supply	Volt ~	230	230
Frequency	Hz	50/60	50/60
Motor power	Watt	1000	1000
Absorption	A	5	5
Max air volume	m ³ /h	178.2	178.2
Max vacuum	mmH ₂ O	2185	2185
Dust container capacity	lt.	3	3
Cardboard box weight	Kg	4.5	4.5
Suction unit weight	Kg	3.8	3.8
Cardboard box overall size	cm	35x48x24	35x48x24
Size	A	316	316
Size	B	438	438
Size	C	33	33
Size	D	205	205

3.8 Control panel description (see picture)

- 1 - SECURITY FUSE
10A 250V motor security delayed-action fuse for protecting the equipment.
- 2 - START KEY (Jolly)
PLUG-IN KEY (Jolly Contact)
(Mod. JOLLY): Press the key: it switches on (red color) when the suction unit has been activated and the unit starts operating
(Mod. JOLLY CONTACT): Press the key: it switches on (red color) when the suction unit is plugged.
Plug the electrified hose into the relevant inlet and move to "I" the switch on the hose handle to activate the unit.
- 3 - RED LED "DUST BAG REPLACEMENT WARNING MESSAGE"
Once the suction unit has been activated:
 - Switched-off LED: the unit is working correctly.
 - Flashing LED, fast flashing: the unit is working correctly.
 - LED is permanently switched-on and unit is working but does not Hoover material:
 THE DUST BAG IS OBSTRUCTED! REPLACE THE DUST BAG.
- 4 - Hose inlet.



4 - INSTALLATION

English



**- ATTENTION -
THE UNDERMENTIONED OPERATIONS
MUST BE CARRIED OUT BY DULY QUALIFIED STAFF**



4.1 Safety Measures

Suggestions for a correct installation in the relevant places are detailed hereunder:
During the installation of the unit a bipolar interrupter has to be installed before the unit with a separation of the contacts of at least 3 mm.

Before the installation, specify the most suitable place inside the building and check the building by carefully inspecting the following:

- There are no pipes (gas, electricity or water) spreading out in the walls.
- There are no bearing columns
- The air exhaust outlets on the external walls are not obstructed or blocked. They can be easily drilled and their position does not create any problem to neighboring structures.

4.2 Place of installation

Choose a space for installation so to allow the hose reaching the highest number of spots. Consider the possibility of installing more units in a single building.

4.3 Installation surface

Leave free and well-lit space all around the suction unit to allow easy replacement of the dust bag and trouble-free maintenance and repair operations.

4.4 Installation options

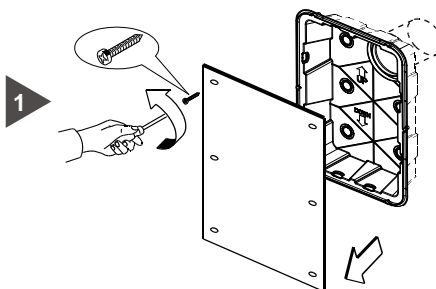
Consider two different installation options:

- wall fitting with pre-installed JOLLY BOX casing (item number 8500.0).
- wall fitting without JOLLY BOX casing (finished houses).

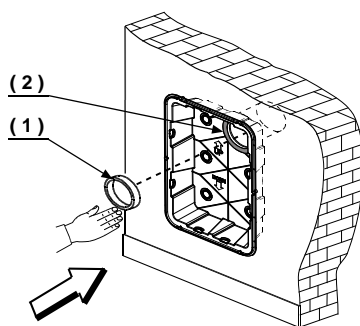
The two following paragraphs illustrate the two different installation sequences.
For any question, do not hesitate to contact the Builder's Technical Service.

4.5 Wall fitting with pre-installed JOLLY BOX casing (item number 8500.0)

(If installed) remove the protection cover of the JOLLY BOX casing by unscrewing the 6 locking screws.



1

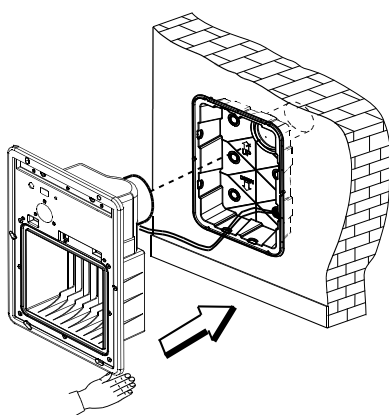


2

Insert the sponge (1) in the round housing (2) of the Jolly Box casing.
NOTE: the sponge must not go beyond the edge of the special housing.

Plug-in the suction unit
(see paragraph 4.7)

3

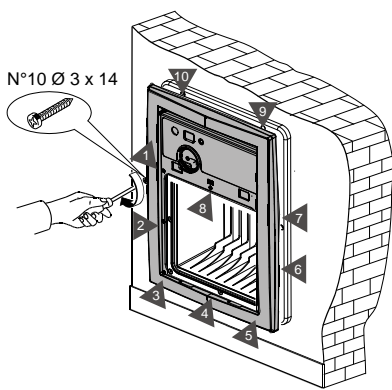
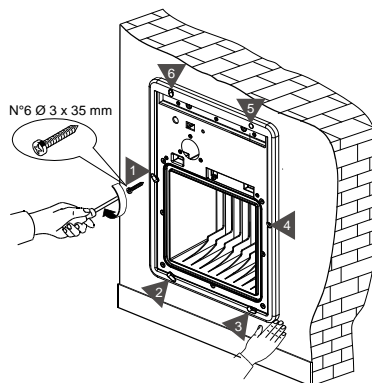


4

Arrange the Jolly suction unit inside the casing (Jolly Box); pay special attention to the position of the electric cable.

Put the Jolly suction unit to the wall;
use ONLY the 6 Ø 3x35 mm screws
delivered with the suction unit.

5

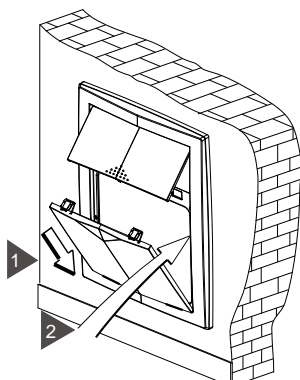
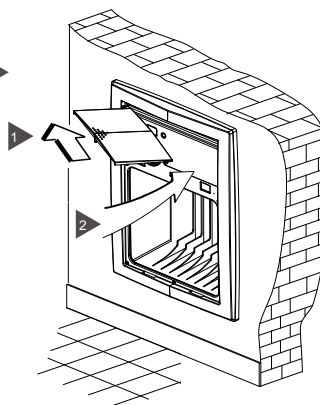


6

Screw the special frame to the
Jolly suction unit; use ONLY
the 10 Ø 3x14 mm screws included
in the suction unit box.

Fix the switch cover. Arrange one of the two side
pins in the housing and position the second one;
push it gently until it engages.
A weak click confirms the correct assembly.

7



8

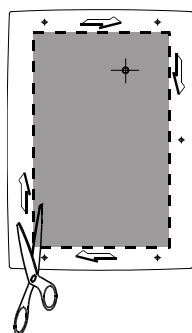
Arrange the dust bag container.
Arrange the lower cover by positioning
the two guides in the slots of the frame.
Push gently the cover towards the frame
until the two upper hooks engage.

4.6 - Wall fitting without JOLLY BOX casing (finished houses)

ATTENTION: before installing, read carefully the installation instructions detailed in paragraphs 4.1, 4.2, 4.3 and 4.4.

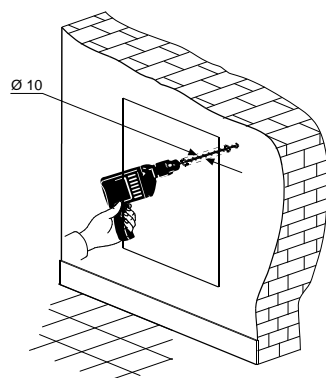
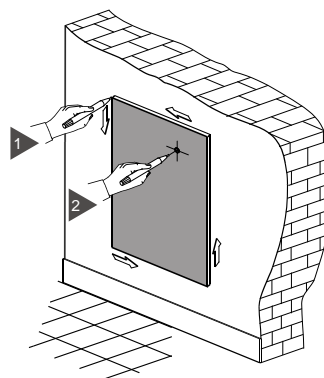
Cut the edge of the cardboard stripe; use a pair of scissors and carefully follow the dotted line. Once you have finished the cutting operation, you have got your **TEMPLATE**!

1



Arrange the template on the wall; draw the outline of the template and the position of the air exhaust outlet.

2



3

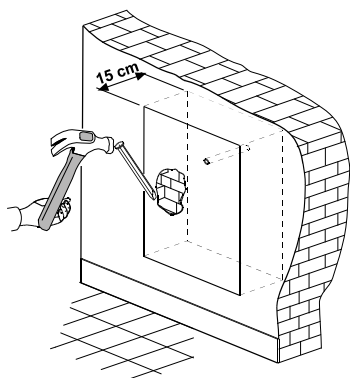
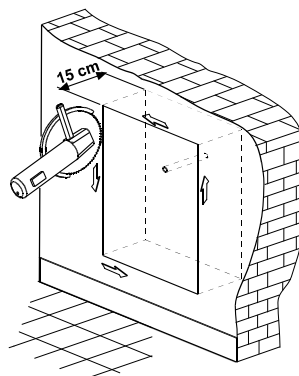
Drill a pre-centering hole Ø 10 (GO BEYOND THE WALL) in the spot you have previously marked.

English

English

Drill by following the outer edge you have previously drawn. Use an angle grinder (shown in the picture) to drill accurately.

4

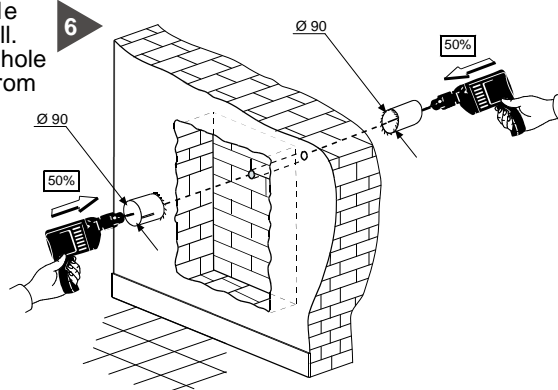


5

Make a hole in the wall for the housing of the Jolly suction unit.
IMPORTANT: Depth of the housing: 15 cm

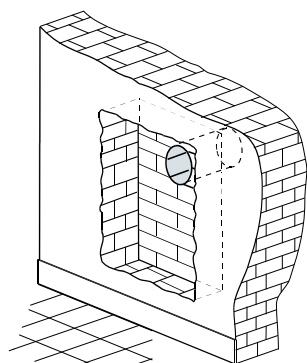
Enlarge to $\varnothing 90$ the $\varnothing 10$ hole previously drilled; use a $\varnothing 90$ core drill.
IMPORTANT: if possible, enlarge the hole by drilling half from outside and half from inside.

6

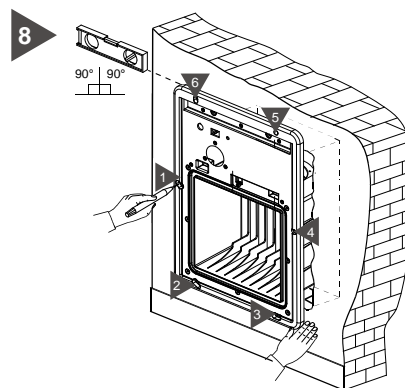


7

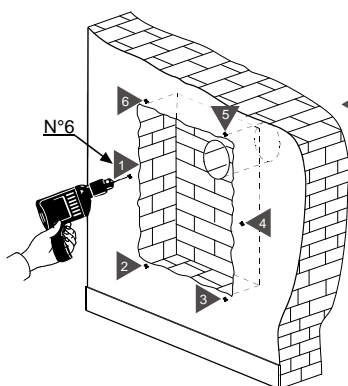
The picture shows the finished housing for the Jolly suction unit.



Put the Jolly suction unit into the housing, position it on the wall and check the correct perpendicularity with reference to the floor. Use a pencil and draw the position of the six holes to be drilled for fixing the suction unit to the wall.

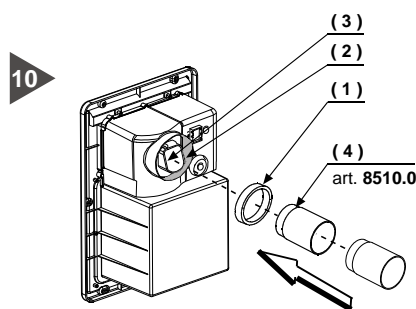


English



Remove the Jolly suction unit from the housing and drill the 6 holes previously sketched. Drill the holes by paying attention to the type of wall you are drilling and to the screw anchor to be used.

Fit the connection sponge (1) in the round housing (2) around the pipe union of the air exhaust (3) of the Jolly suction unit. Fit the extension (4) in the sponge; check that the cover of the exhaust pipe union is not obstructed.
NOTE: when installing the suction unit into thick walls, you probably need to fit more than one extension; another extension can be coupled to the first one to obtain the desired measure.

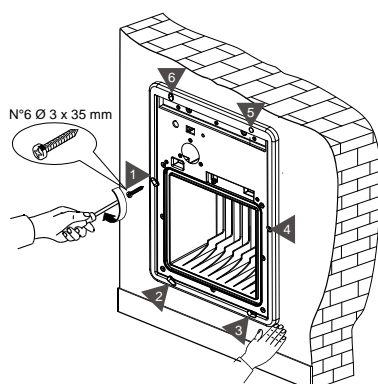
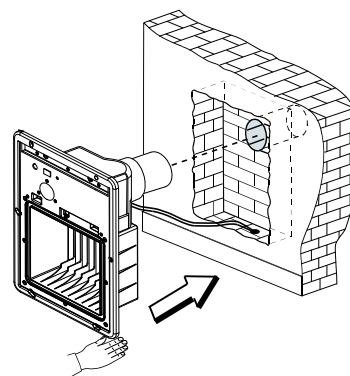


**Plug-in the unit
(see paragraph 4.7)**

11

Arrange the Jolly unit in the housing and fit the extension in the $\varnothing 90$ hole by paying great attention to cable position.

12

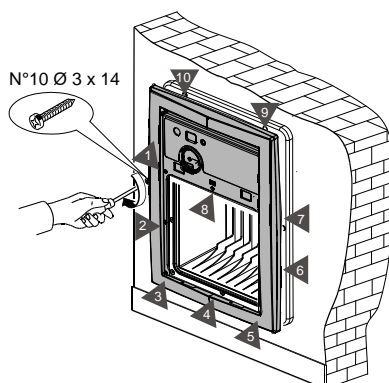
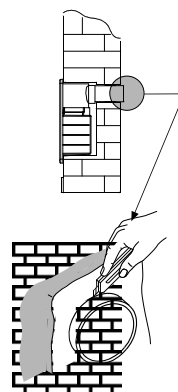


13

Fix the Jolly suction unit to the wall. Use ONLY the 6 $\varnothing 3 \times 35$ mm screws delivered with the suction unit.

Use adhesive or silicone to seal the external end of the extension.
If necessary, trim the extension section, which protrudes from the wall and close with a vent grid.

14

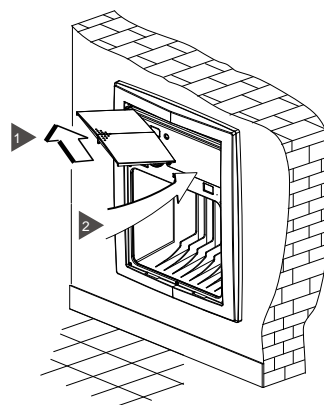


15

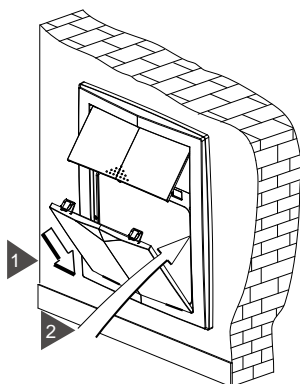
Screw the special frame to the Jolly suction unit; use ONLY the 10 $\varnothing 3 \times 14$ mm screws included in the cardboard box.

Fix the cover of the switch. Arrange one of the two side pins in the housing and position the second one; push it gently until it engages. A weak click confirms the correct assembly.

16



English



17

Arrange the dust bag container. Arrange the lower cover by positioning the two guides in the slots of the frame. Push gently the cover towards the frame until the two upper hooks engage.

4.7 Electrical connection

IMPORTANT!= Always unplug the suction unit before carrying out any operation.

ATTENTION= The installation must be carried out by duly qualified staff only!



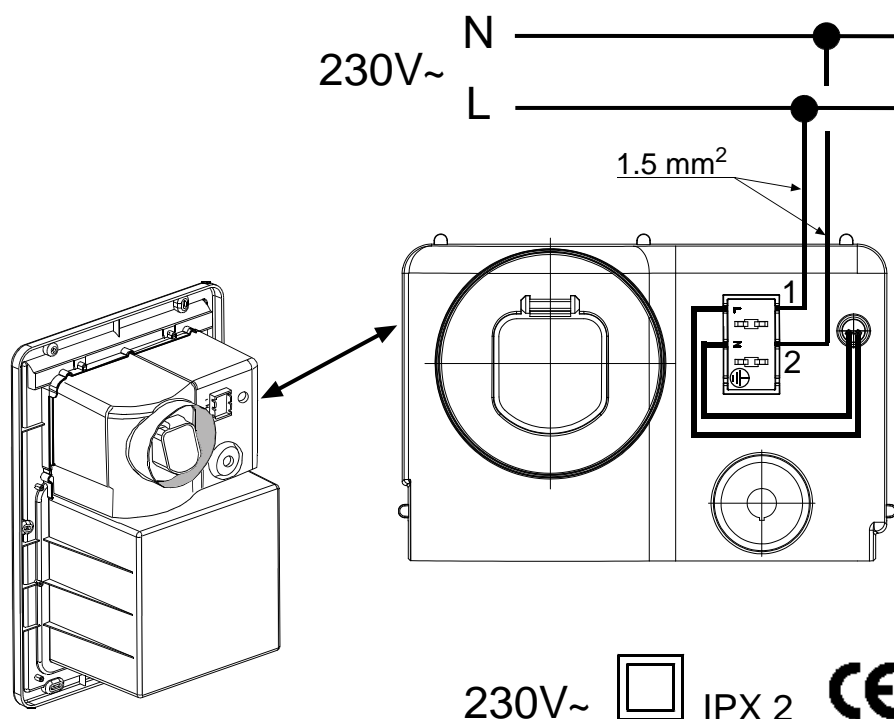
English

Before plugging the suction unit, make sure that the main power supply corresponds to the power supply indicated on the serial number plate arranged on the rear side of the suction unit (see the serial number plate detailed in paragraph 1.3). The relevant data are specified also in paragraph "3.7- Technical Features".

The Builder declines all responsibility for damages to person or objects due to an electric system connection, which does not comply with the regulations in force.

Follow the instructions to carry out this operation correctly (see picture below).

- 1 - Connect the power supply cables L - N to terminals 1 and 2, as shown in picture (see below).

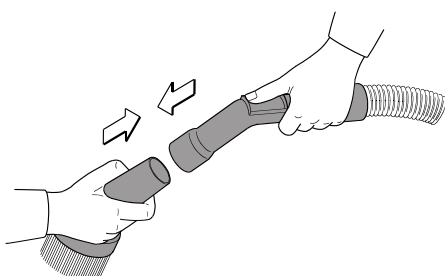
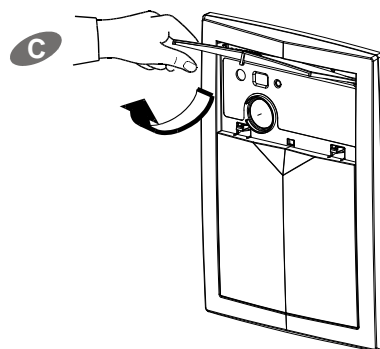
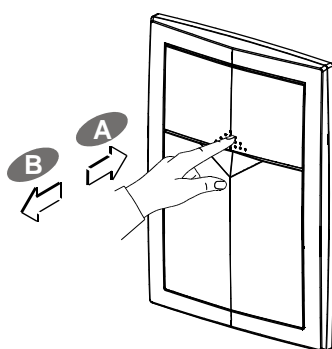


230V~  IPX 2 

5 - HOW TO USE THE SUCTION UNIT

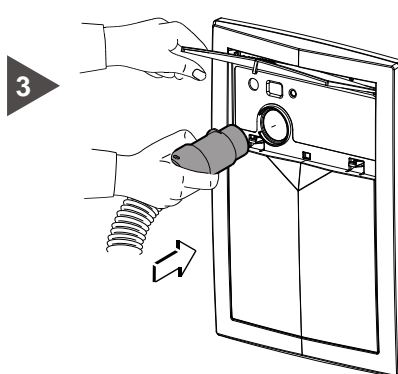
5.1 How to use the suction unit

- 1** Lift the upper cover by pressing gently the knurled center (A).
Press gently to release the closing hook of the cover.
Press gently until a "click" confirms the release.
Release the cover (B) and open it until it stops in open position (C).



- 2** Fit the accessory suitable for the cleaning operation you want to carry out in the hose.

Fit the opposite end of the hose in the suction inlet; pay attention to the correct position of the guide between the hose and the unit.

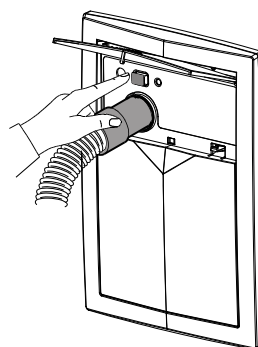


3

5.2 Starting of the suction unit

Press the start push-button.
A red LED switches on.

1



(JOLLY MODEL)

The suction unit switches on and starts
hoovering.

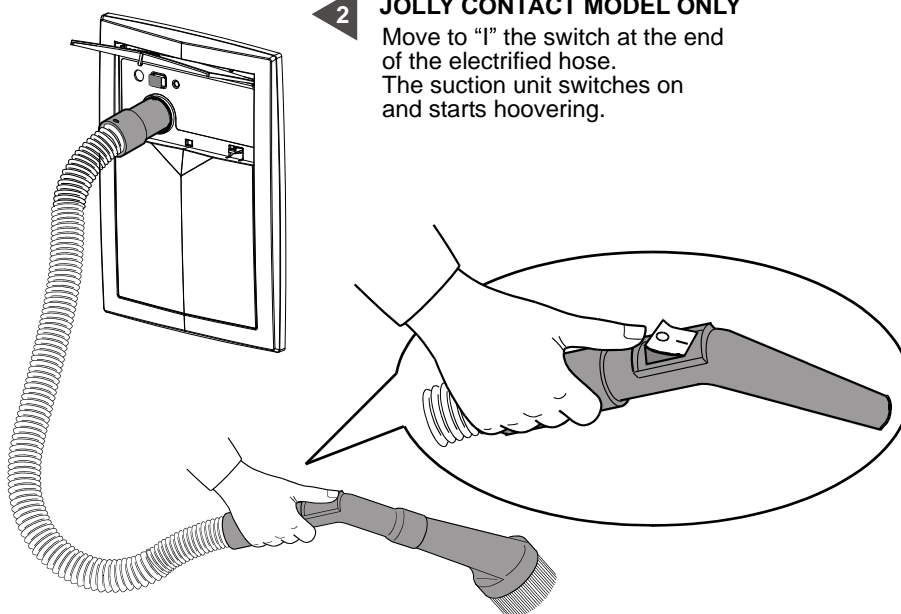
(JOLLY CONTACT MODEL)

The red start push-button switches on
and confirms that the suction unit
is plugged to the power supply.

2

JOLLY CONTACT MODEL ONLY

Move to "I" the switch at the end
of the electrified hose.
The suction unit switches on
and starts hoovering.



After finishing the cleaning operations, repeat the sequence in reverse
to switch off the suction unit.

6 - MAINTENANCE

-ATTENTION-

BEFORE CARRYING OUT ANY MAINTENANCE OPERATION, ALWAYS UNPLUG THE SUCTION UNIT FROM THE POWER SUPPLY AND CHECK THAT THE RED START PUSH-BUTTON IS SWITCHED OFF. ALWAYS WEAR PROTECTION GLOVES AND GOGGLES.



English

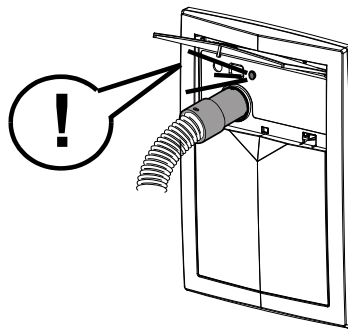
6.1 Programmed maintenance

In order to keep the system perfectly operating and to avoid possible mechanic trouble, the user must overhaul the whole system at precise time intervals.

The JOLLY and JOLLY CONTACT suction units are equipped with a maintenance control system.

In particular, the system indicates when the dust bag must be replaced by means of a red led assembled on the front side of the suction unit.

IMPORTANT ! = The dust bag must be replaced if the red led remains lit up when the unit is activated but does not suck.



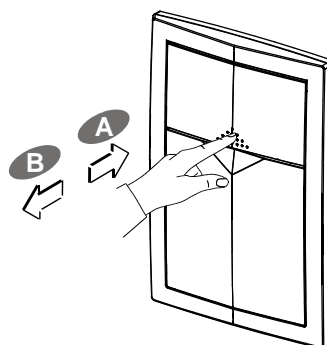
- Periodically clean the motor filter with running water. Wait until the unit is perfectly dry before assembling.
- Periodically check that the exhaust air extension outside the wall is not covered or obstructed.
- Periodically clean the external casing of the suction unit using a smooth cloth dampened with water and some neutral soap.
- **Attention : Be sure to use only water or water with neutral soap when cleaning the suction unit. Wait until the unit is perfectly dry prior to start it.**

6.2 Replacement of the dust bag

English

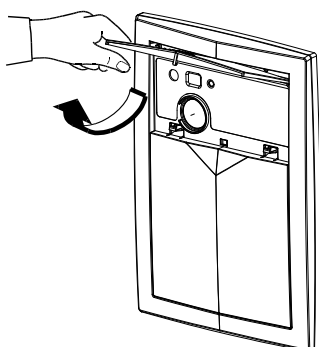
Lift the upper cover.

1



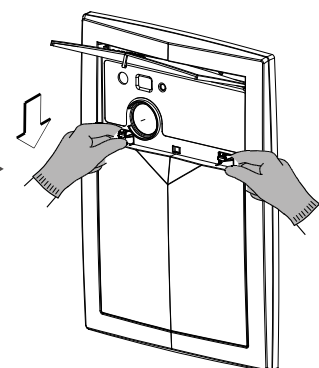
2

Stop the upper cover in "open" position.



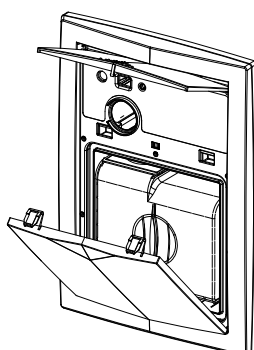
Press the two closing hooks of the lower cover downwards.

3



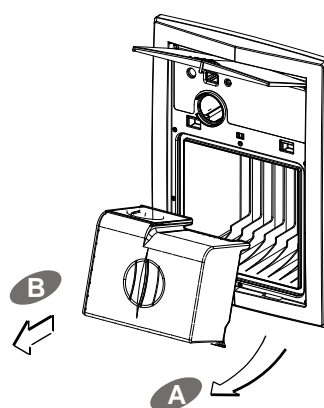
4

Remove the lower cover .



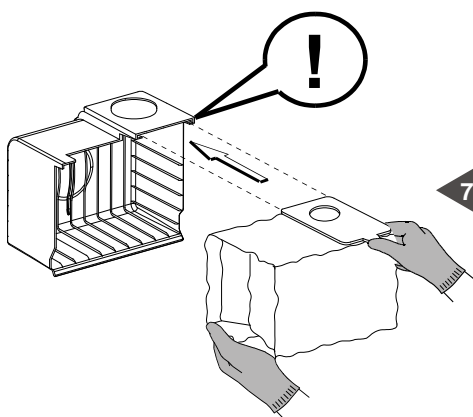
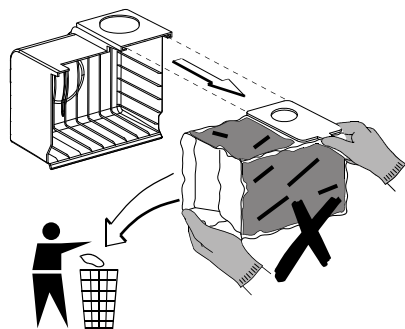
Detach the dust bag from the housing

5



Remove the dust bag.

6

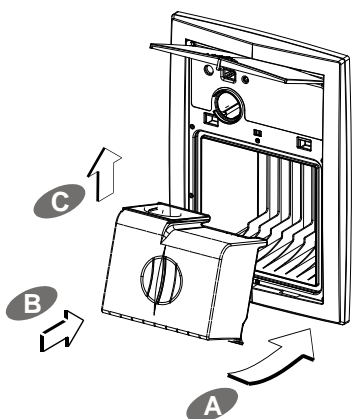


7

Insert a new dust bag in the container.
ATTENTION ! = Insert the new dust bag correctly in the special container guides.

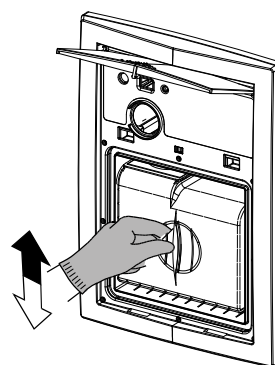
8

Position the dust bag container by correctly coupling the bag fitting to the internal pipe union. Check that the dust bag does not appear under the container!

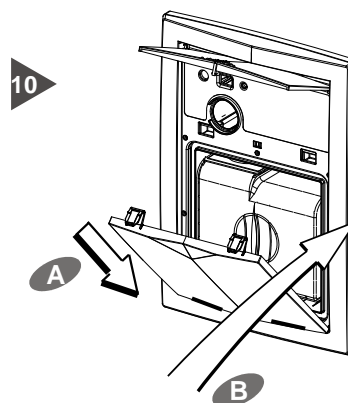


Check if the bag is correctly positioned and the bag fitting perfectly suits the pipe union by gently moving the whole container perpendicularly.

9



Reassemble the cover of the dust bag by fitting the two lower guides into the small cavities on the frame. Press the cover towards the frame until the two closing hooks engage.



7 - SERVICING

7.1 Servicing Criteria

It is strictly forbidden to carry out, any maintenance or servicing operation not expressly authorized in this user manual.

Only duly qualified technical assistance providers can carry out any maintenance or repair operations.

The guarantee will not apply in case of interventions carried out by non-authorized staff and the manufacturer cannot be considered responsible for possible injuries to persons and damages to things resulting from this kind of intervention.

English

8 - RECOMMENDED SPARE PARTS

8.1 Spare parts list

It is advisable to stock the spare parts more subject to wear.

In order to grant the best and long-lasting performance, we suggest using only original SISTEM-AIR spare parts.

Description	Quantity	Spare Part Code	Suction Unit Model
Dust bag package	1 pack. (5 dust bags)	8402.0	- Jolly - Jolly Contact
Motor protection filter	1	8406.0	- Jolly - Jolly Contact

9 - DISMANTLING AND DISPOSAL

9.1 General instructions

When dismantling the suction system, dispose appropriately of used parts or material, which could endanger human health or well-being as well as the environment if handled improperly.

You must be acquainted with sites/companies to collect and dispose of used parts and materials.

The disposal and/or recycling of any part of the suction unit must be carried out in compliance with legal regulations in force.

10 - TECHNICAL PROBLEMS

10.1 Troubleshooting

English

Problem	Possible causes	Possible corrective measure
The suction unit does not start	The power supply is switched off	Switch on the power supply
	The start push-button of the unit is not activated	Press the start push-button
	The electrified hose is plugged incorrectly (Jolly Contact only)	Plug correctly the electrified hose in the housing
	The thermal relay of the motor triggers	Allow several minutes for motor cooling
	Fuse burnt-out	Unscrew the fuse cover and replace it
Weak air suction	Hose and cleaning accessories broken	Check if the hose and the accessories are integral and replace them if needed
	The dust bag needs to be replaced	Replace the dust bag
	The dust bag is positioned incorrectly in the housing	Check the correct position of the bag in the container guides and of the fitting of the pipe union
	Dust bag worn	Replace the dust bag
	The fitting of the lower cover is damaged or incorrectly positioned	Check if the fitting is integral and correctly positioned
	The motor protection filter is dirty	Check and clean if needed
	Hose or accessories obstructed	Check and clean if needed
	The lower cover is incorrectly assembled	Check and close the cover correctly
	The air exhaust is obstructed	Contact the Technical Service