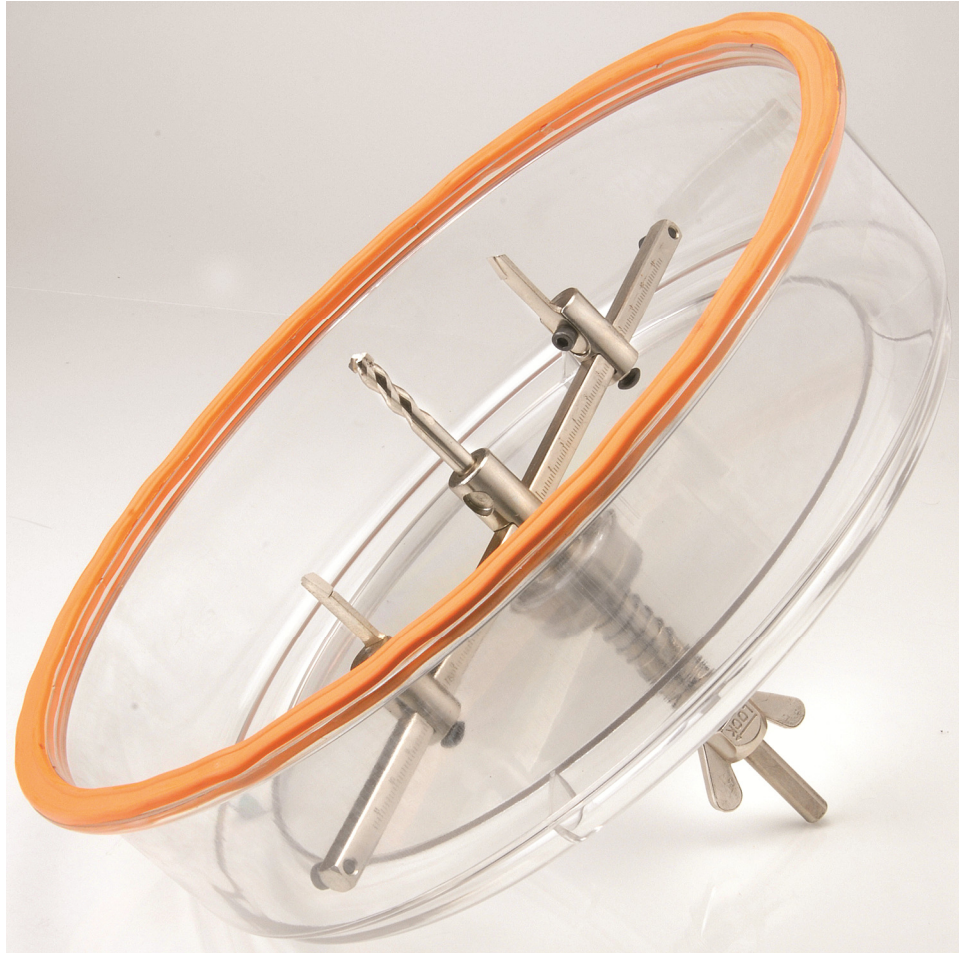


Adjustable Drywall and Ceiling Tile Hole Cutter



User Manual

Notes:

- Please read and understand these instructions fully; retain for future reference.
- Use this tool only in a manner consistent with this instruction manual.
- For your safety, do not run the tool unless it is facing the work piece.
- Verify that the space behind the cutout is clear of electrical or utility hazards.
- To reduce the chance of stripped or broken screws resulting in possible damage to the tool and/or people, do not overtighten screws.
- This tool is not recommended for use on concrete or hardwoods.

Overview

If you install speakers or can lights, this circle hole cutter is a must-have! The cutting tool is adjustable from 1-3/16" to 11", allowing you to tackle the biggest jobs without making a mess. Dual blade design eliminates the need to adjust cumbersome balance bars. Carbide tipped blades and high-speed steel bits will go through drywall and ceiling tiles with ease. A ball-bearing collar in the dust shroud allows the cutting tool to spin effortlessly.

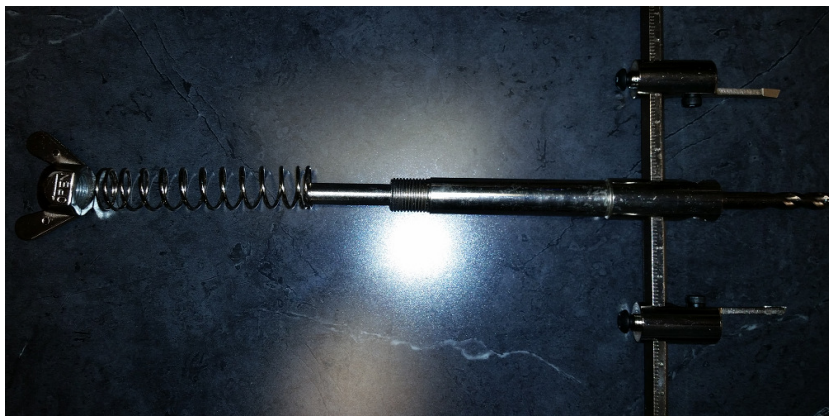
Contents:

- Circle cutting tool
- Set of (2) carbide tipped cutting blades; for firm materials
- Set of (2) high-speed steel cutting blades; for soft materials
- (1) carbide tipped and (1) high speed steel arbor bit
- Dust shroud with ball bearing
- (5) wood and (5) masonry drill bits
- Tape measure and pencil
- Heavy duty case

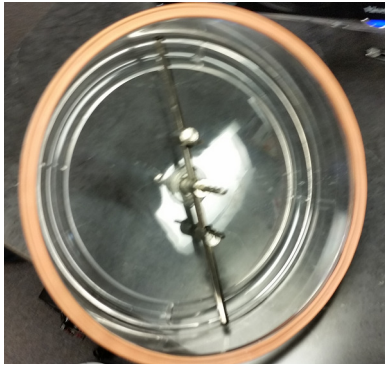
Assembly

The cutting tool uses reverse threads to prevent loosening while the tool is being used. Turn the wing-nut clockwise to "OPEN" or remove the wing-nut, and counter-clockwise to "LOCK" or tighten the wing nut.

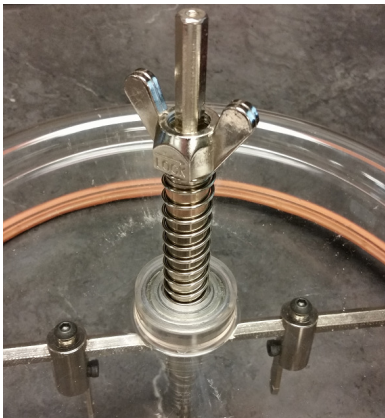
Remove the wing-nut and the spring from the cutter shaft (Fig. 1)



Slip the cutter shaft through the ball-bearing collar in the dust shroud (Fig. 2)



Slide the spring over the cutter shaft and secure with the wing-nut (Fig. 3)



Adjusting the Cut Diameter

The cutter has dimension markings on both sides; one side is inches, and the opposite side is metric.

Use the included hex key, loosen the clamping screws at the top of each blade holder, slide the blade holders across the mounting bar so the edge facing the arbor aligns with the desired measurement of the hole to be cut (Fig. 4)

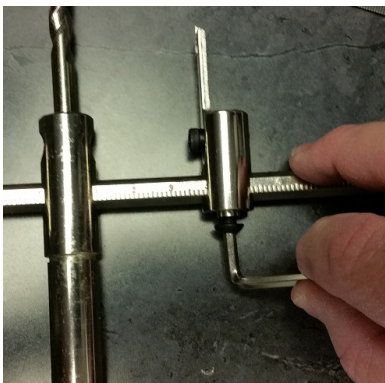
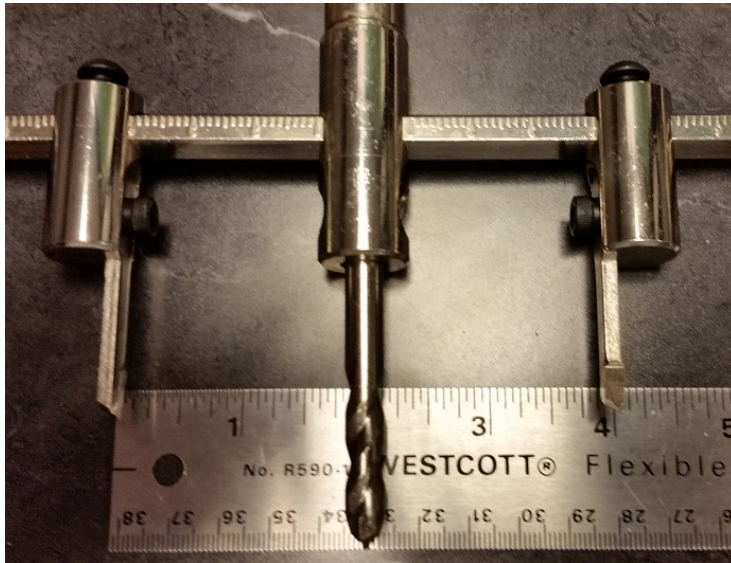


Figure 5 shows each blade holder set to the 4" mark. Although each blade holder is only 2" from the center of the tool, the diameter of the hole will be 4".



Using the Tool

This tool will fit most 3/8" and 1/2" drills. Only use variable speed drills with this tool.

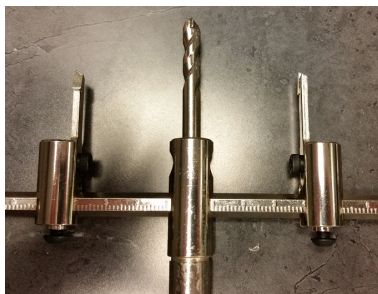
- Attach the hole cutter to the drill motor and tighten the chuck
- Press the tool against the wall or ceiling surface before starting the drill
- Begin at a low speed until the pilot bit has cut through, the dust shroud should now be touching the wall or ceiling surface
- Increase the drill speed gradually until the blades are completely through the material
- Dump the cut material and dust from the dust shroud

Clean-up and Storage

Clean the inside of the dust shroud and the surfaces of the cutting tools with a cloth before placing the tool in the case. If the tool will be stored for a long time or stored in a damp or humid environment, apply a thin layer of oil to the metal surfaces to impede rust.

Replacing the Cutter Blades

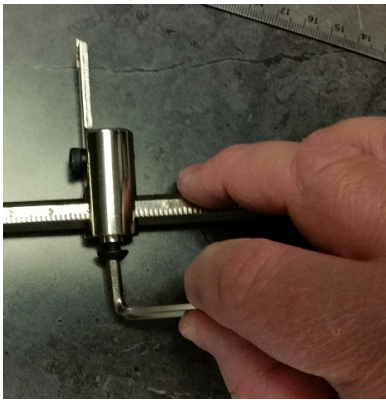
The Adjustable Hole Cutter features replaceable blades. It is important to note that the cutting face of the blade must align with the clock-wise rotation of the arbor bit (Fig. 6).



Using the included hex key, remove the stop screw from the end of the mounting bar (Fig. 7).



Loosen the set screw at the top of the blade holder and slide the blade holder off the mounting bar (Fig. 8).



Remove the retaining screw from the blade holder and remove the blade (Fig. 9).



Install the new blade, re-install the blade holder, and tighten all screws.

Warranty

This product is warranted free from defects in material and workmanship for one year from date of purchase. Warranty does not apply to misuse, abuse, neglect, accident, improper use, etc.

To return an unused or defective product, contact the Parts Express returns department at 1-800-338-0531 ext. 780 to obtain an RA number. Pack merchandise carefully to avoid further damage, and complete the Return Form on the bottom of the invoice. Write your customer number and RA number on the outside of the box. Ship merchandise back to Parts Express prepaid. Unauthorized returns will not be processed.