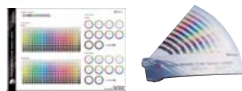


## Roland Professional Print Management Software Included



Roland VersaWorks supports Adobe® Illustrator®, CorelDRAW® and other popular design software packages. Choose from a wide variety of layout functions includes scaling, cropping, rotating, auto layout and tiling to optimize your print media. Roland VersaWorks also features Roland Color System Libraries for accurate color matching of traditional and metallic colors, and variable data printing which allows you to efficiently create a series of signs, labels and name badges in which the text and graphics change from one print to the next.



## Roland VersaWorks System Requirements

Operating system	Windows® 10 (32/64-bit); Windows® 8/8.1 (32/64-bit); Windows® 7 Ultimate/Professional (32/64-bit)
CPU	Core™2 Duo, 2.0 GHz or faster recommended
RAM	2 GB or more recommended
Video card and monitor	A resolution of 1,280 x 1,024 or more recommended
Free hard-disk space	40 GB or more recommended
Hard-disk file system	NTFS format
Optical drive	DVD-ROM drive

\*Roland VersaWorks is a 32-bit application, which runs on 64-bit Windows® with WoW64 (Windows 32-bit on Windows 64-bit). \*Windows® RT is excluded.

**Application software compatible with Cutting and Print&Cut**

Adobe® Illustrator® 10, CS, CS2, CS3, CS4, CS5, CS6 / CorelDRAW® 11, 12, X3, X4, X5

## R-Works Easy-To-Use Roland Design Software Included

R-Works\* allows you to immediately start designing graphics for the BN-20, even if you do not have any design software of your own. With R-Works, you can quickly import commercially-available stock photos or personal photos taken with a digital camera. Create original layouts with text and graphics for custom T-shirts, labels and decals.

\* R-Works does not correspond to a white ink loading type.

**R-Works System Requirements** Windows® 10 (32/64-bit); Windows® 8/8.1 (32/64-bit); Windows® 7 Ultimate/Professional (32/64-bit)



Specifications		
Printing technology		Piezoelectric inkjet
Media	Width	150 to 515 mm (5.9 to 20.3 in.)
	Thickness	Maximum 1.0 mm (39 mil) with liner, for printing Maximum 0.4 mm (16 mil) with liner and 0.22 mm (9 mil) without liner, for cutting
	Roll outer diameter	Maximum 150 mm (5.9 in.)
	Roll weight	Maximum 6 kg (13.2 lbs.)
	Core diameter	76.2 mm (3 in.) or 50.8 mm (2 in.)
Printing/cutting width <sup>*1</sup>		Maximum 480 mm (18.9 in.)
Ink cartridges	Type and capacity	Roland ECO-SOL MAX 2 (220 cc cartridge) or Roland aqueous pigment (FPG) ink (220 cc cartridge)
	Colors	Five colors (cyan, magenta, yellow, black, and metallic silver or white) or Four colors (cyan, magenta, yellow, and black) (Five colors are only ECO-SOL MAX 2)
Printing resolution (dpi)		Maximum 1,440 dpi
Cutting blade	Type	Roland CAMM-1 series compatible
	Blade offset	0.25 mm (9 mil)
Cutting speed		10 to 150 mm/s
Blade force		30 to 300 gf
Software resolution (when cutting)		0.025 mm/step
Distance accuracy (when printing) <sup>*2 *3</sup>		Error of less than ±0.3% of distance traveled, or ±0.3 mm, whichever is greater
Distance accuracy (when cutting) <sup>*2 *4</sup>		Error of less than ±0.4% of distance traveled, or ±0.3 mm, whichever is greater
Repetition accuracy (when cutting) <sup>*2 *5</sup>		±0.1 mm or less
Alignment accuracy for printing and cutting <sup>*2 *6</sup>		±0.5 mm or less
Alignment accuracy for printing and cutting when reloading media <sup>*2 *7</sup>		Error of less than ±0.5% of distance traveled, or ±3 mm, whichever is greater
Print heater <sup>*8</sup>		Temperature: 35°C (95°F)
Connectivity		USB (compliant with Universal Serial Bus Specification Revision 2.0)
Power-saving function / Power requirements		Automatic sleep feature / AC 100 to 240 V ±10 %, 1.0 A, 50 / 60 Hz
Power consumption	During operation	Approx. 90 W
	Sleep mode	Approx. 5.5 W
Acoustic noise level	During operation	62 dB (A) or less
	During standby	42 dB (A) or less
Dimensions / Weight		1009 (W) x 582 (D) x 293 (H) mm (39.7 (W) x 22.9 (D) x 11.5 (H) in.) / 36 kg (79.4 lbs.)
Environmental	Power on	Temperature: 20 to 32°C (68 to 90°F), humidity: 35 to 80%RH (no condensation)
	Power off	Temperature: 5 to 40°C (41 to 104°F), humidity: 20 to 80%RH (no condensation)
Included items		Power cord, USB cable, blade, blade holder, Roland Software Package, Software RIP (Roland VersaWorks), User's Manual, etc.

\*1 The length of printing or cutting is subject to the limitations of the program. \*2 Using Roland specified media, loaded correctly, temperature: 25°C (77°F), humidity: 50 %RH, all pinch rollers are used, 25 mm or more for both right and left margins and 35 mm or more front margin, excluding expansion or contraction of the media, and all correction and adjustment functions of this machine have been made properly. \*3 Using Roland specified media, print travel of 1m. \*4 Using Roland specified media, cut travel of 1m. \*5 Range for assured repetition accuracy: Length 1,000 mm \*6 Provided that media length is under 1,000 mm. Excluding possible shift caused by expansion/contraction of the media and/or by reloading the media. \*7 Using Roland DG specified media, mark size: 1,000 mm in the media-feed direction, 480 mm in the carriage-movement direction. No lamination. Automatic detection of crop marks at 4 points when media is reloaded. Excludes the effects of skewed movement and of expansion and contraction of the media. \*8 Warm-up is required after power up. This may require 5 to 20 minutes, depending on the operating environment. The preset temperature may fail to be reached 35°C (95°F) depending on the ambient temperature and media width.

## About Metallic Silver and White Inks

Due to the nature of white and silver inks, the pigment in these inks will settle in the cartridge and ink flow system, requiring you to shake the cartridge before each use. Outdoor durability is three years for CMYK inks, one year for white ink, and one to three years for metallic silver ink, depending on the media used. Roland DG strongly recommends lamination for both indoor and outdoor graphics to ensure the quality of metallic inks.

Options	Model	Description
ECO-SOL MAX 2 Ink	ESL4-MG	Magenta, 220 cc
	ESL4-YE	Yellow, 220 cc
	ESL4-CY	Cyan, 220 cc
	ESL4-BK	Black, 220 cc
	ESL4-MT	Metallic silver, 220 cc
	ESL4-WH	White, 220 cc
	ESL4-CL	Cleaning liquid, 1 pc.
Aqueous Pigment Ink	FPG-MG	Magenta, 220 cc
	FPG-YE	Yellow, 220 cc
	FPG-CY	Cyan, 220 cc
	FPG-BK	Black, 220 cc
	CJ-CL	Cleaning liquid, 1 pc.
Blade	ZEC-U5022	For thick, reflective and fluorescent vinyl, 2pcs.
Blade holder	XD-CH3	Blade holder with blade extension abjuster, made of resin



Optional Stand  
**PNS-24**



# VersaSTUDIO

**SIGN MAKER BN-20**

# Make a Lasting Impression with VersaSTUDIO



Roland DG reserves the right to make changes in specifications, materials or accessories without notice. Your actual output may vary. For optimum output quality, periodic maintenance to critical components may be required. Please contact your Roland DG dealer for details. No guarantee or warranty is implied other than expressly stated. Roland DG shall not be liable for any incidental or consequential damages, whether foreseeable or not, caused by defects in such products.

Adobe, PostScript, PostScript 3 and the PostScript logo are trademarks of Adobe Systems Incorporated. All other trademarks are the property of their respective owners. Reproduction or use of copyrighted material is governed by local, national, and international laws. Customers are responsible for observing all applicable laws and are liable for any infringement. Roland DG Corporation has licensed the MMP technology from the TPL Group.

Imagine.  Roland

**AUTHORIZED DEALER:**

Printed in Japan. RDG-416090199 15 SEP S-X

**www.rolanddg.com**



# Add Unlimited Value To Your Business with the Versatile VersaSTUDIO

The VersaSTUDIO BN-20 allows you to launch a stream of new businesses from your desktop. This compact professional inkjet can produce durable graphics for outdoor applications, and its Print&Cut capabilities allow you to produce labels and decals with ease. Metallic silver ink is perfect for creating striking effects, and white ink is ideal for transparent or colored media applications. In short, the versatility of the VersaSTUDIO BN-20 adds unlimited potential to produce creative applications and add value to our business.

**High-Quality and Low Cost Durable Outdoor Prints**  
Four Colors



**Cell Phone and Laptop Wraps** All Type

Roland Print&Cut versatility allows you to print and digitally die cut graphics in one seamless workflow for custom labels and decals, including cell phone skins, laptop wraps and more.

**POS and POP** All Type

With the BN-20, you can produce POP displays in unique shapes and colors that attract attention and drive retail sales. Create a single POP or an entire campaign, profitably, with all the convenience of our easy-handling 220cc ink cartridges.

**Add Value to your Business with Metallic Prints**  
Four Colors + Metallic Silver Ink



**Posters and Decals**

Using Metallic Silver ink, you can add luxurious accents and premium value to posters and Decals photographic reproductions.

**Eye-Catching Creativity on Transparent Media**  
Four Colors + White Ink



**Window Signs**

Make Shop Windows Come Alive! See-through window displays are easily produced using transparent media. The effective use of white ink adds impact to display graphics.



**Labels and Decals**

Handle Short Runs for Transparent Stickers! Transparent labels and decals give a luxurious feel. Now you can handle short runs for teams, clubs and other groups.



**Package Designs**

Low-Cost Prototypes for Design Proposals. The BN-20 gives you the freedom to create package design prototypes on silver media. This increases your ability to offer winning proposals while minimising costs.



**Cut Vinyl Signage** All Type

From pinstriping for vehicles and motorcycles to window signs and displays, contour cutting is essential to your production workflow. The BN-20 allows you to cut vinyl signs using a wide variety of fonts\*.

\*The BN-20 supports TrueType and OpenType fonts.



**Labels and Decals for Outdoor Display** All Type

The BN-20 comes with award-winning Roland ECO-SOL MAX 2 ink for outdoor signs, labels and decals. Graphics are easy to produce and durable up to three years outdoors without lamination.\*<sup>1</sup> The BN-20 also supports water-based Roland FPG inks for exceptional indoor graphics.\*<sup>2</sup>

**3 years** Outdoor Durable Inks

\*<sup>1</sup> Three-year outdoor durability is based on accelerated weather tests conducted by Roland DG. Results may vary depending on the location and application. Some applications, including vehicle graphics, may require lamination.  
\*<sup>2</sup> Ink type must be selected at the time of purchase.



**Heat Transfers for Apparel**

Right at your desktop, you can print quality heat transfers and contour cut them into any shape for stylish results. Apply Metallic Silver ink for hundreds of striking metallic color effects.\*<sup>3</sup>

\*<sup>3</sup> Metallic silver ink should only be used as a spot color as mixing it with other colors will negatively impact washability.



**A Complete Solution**

The BN-20 allows you to print graphics up to size A2 or 480 mm wide (18.9"), including crop marks for easy finishing. Featuring its own print management and design software, the BN-20 is a complete business solution in a box.

**20"** 293 mm 1009mm 582mm

**Roland VersaWorks** for a FREE demonstration visit Adobe PostScript 3



**VersaSTUDIO**  
SIGN MAKER BN-20

 Four Colors  
 Four Colors + Metallic Silver Ink  
 Four Colors + White Ink