

# Electroencephalography II Laboratory



## Introduction

Several neurological disorders exist that can have an impact on brain function. Often these disorders can be examined by reviewing the electroencephalograph or EEG signal. Quantitative features of the EEG signal in both the temporal and spectral domain can be used for diagnosis. One important clinical disorder that can be diagnosed using the EEG signal is seizures. Seizures and status epilepticus can be potentially life threatening conditions. For convulsive seizures, visual observation is usually used in the emergency department setting to establish the diagnosis. However, non-convulsive seizures (NCS) may produce altered mental state or behavior with only subtle, ambiguous, or absent motor components. Typically the clinical features include coma, psychomotor retardation, drowsiness, inattentiveness, aphasia, limb posturing, abnormal eye movements, cortical blindness, automatisms, delusions, paranoia, and agitation. In unresponsive patients,



physicians typically look for ocular deviation or nystagmoid eye movements, periodic facial or eyelid twitching, or unexplained fluctuation in responsiveness. However, by definition, there are no convulsions (including twitching) in a true non-convulsive seizure. Thus, clinicians are left with only a vague hint that a seizure may be occurring, but not a diagnosis. The only way to definitively diagnose NCS is by EEG recordings, rather than by clinical observation.

During this laboratory session, students will record EEG from the surface of their scalp. They will collect four channels of their own normal EEG signals and compare it to EEG signals in an abnormal clinical database. Students will examine quantitative features of the EEG signal that can be useful in the diagnosis of neurological disorders.

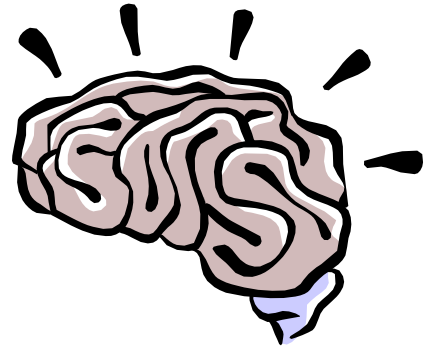
### Equipment required:

- CleveLabs Kit
- CleveLabs Course Software
- Seven (7) Gold cup electrodes
- Conductive Gel
- Gauze and skin preparation
- Microsoft Excel®, MATLAB®, or LabVIEW™

## Background

### *Clinical Disorders and EEG Responses*

There are approximately 100 million visits to emergency rooms every year in the United States. Of these, approximately 8-10% of the emergency room visits involve acute cerebral dysfunction or injury, or 8-10 million people. Utilizing EEG recordings in the emergency room may improve clinical outcomes in a large patient population. One reason for EEG screenings not being a standard of care includes the lack of appropriate EEG monitoring technology.



### **Epilepsy**

As stated above, an important application of the EEG is to diagnose neurological disorders. Epilepsy is a disease of the nervous system that is characterized by uncontrolled activity of part or all of the central nervous system. There are different kinds of epilepsy, such as grand mal, petit mal, and focal epilepsy. Epileptic seizures are characterized by usually synchronized neural activity, resulting in abnormally large amplitude EEG activity during an attack.

Grand mal epilepsy involves neuronal discharges in all areas of the brain, including the cortex, the deeper parts of the cerebrum, and even the brain stem and thalamus. Generally, grand mal attacks last anywhere from a few seconds to a few minutes. During grand mal the individual may lose control of visceral and motor control. Petit mal involves the basic thalamocortical brain activating system. Often referred to as absence epilepsy, an individual suffering from a petit mal attack will lose consciousness for up to thirty seconds, experience several twitch-like contractions in the head and neck regions, and then resume previous activities. Occasionally, a petit mal attack can initiate a grand mal attack. Focal epilepsy usually results from localized organic lesions or abnormalities such as scar tissue. These abnormalities can cause rapid neuronal discharge that spread to adjacent regions in a wave-like fashion. When the wave reaches the motor cortex, the person experiences Jacksonian epilepsy, where muscles contract progressively down the body. Multi-channel EEG recordings can be used to identify the location of the earliest component of the seizure activity. Such a trigger zone may be removable by surgery to eliminate the seizure disorder.

Researchers are developing electronic devices to automatically detect these abnormal bursts, or 'spikes', of electrical activity in the brain. If the onset of a seizure could be detected early enough, then it may be possible to intervene by administering drugs or electrical stimulation to the brain before an attack occurs. A problem with this technique, however, is that these rhythmic spikes occur quite often in normal EEG's as well.

## Seizure Activity

Certain patterns in the EEG signal indicate seizure activity. These patterns include spikes, sharp waves, and spike-and-wave discharges. Spikes and sharp waves occur during seizures resulting from partial epilepsy. Partial epilepsy means that there is increased neuronal activity in only part of the brain. Generalized epilepsy, on the other is indicated by spike-and-wave discharges. These discharges are seen throughout the brain.

## Grand Mal

Grand mal epilepsy is a condition is a type of generalized epilepsy where there is extreme neural activity in all parts of the brain. These discharges originate in the brainstem portion of the reticular activating system (RAS). A discharge transmitted to the spinal cord will result in a tonic seizure. The EEG during grand mal attack shows a signal that is synchronous and that has a high-voltage magnitude. This signal has the same periodicity as normal alpha waves. Grand mal attacks have been shown to be brought on by hyperexcitability of the neurons that make up the RAS structure or by abnormality in the local neuronal pathways.

## Non-Convulsive Seizures

As described above non-convulsive seizures can be particularly dangerous since little to no clinical observations can be made to diagnose the condition. The abnormal electrical activity of the brain can exist and cause damage before a diagnosis is made. Even more severe than NCS, Non-Convulsive Status Epilepticus (NCSE) is also not only prevalent, but also more dangerous, due to its longer, continuous duration. No universally accepted definition for NCSE exists. However, in general, episodes must be continuous or recurrent for longer than 30 minutes without improvement in the patient's clinical state.

## Visual Evoked Potentials

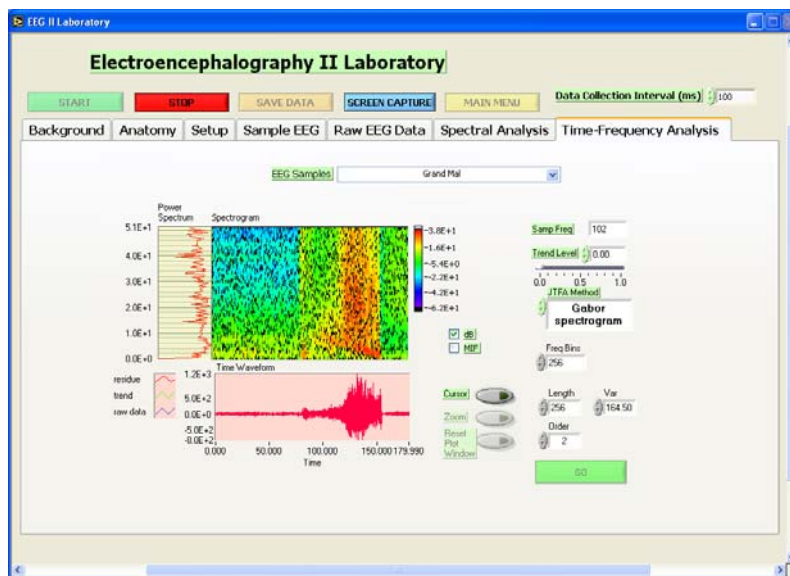
While it is not a clinical disorder, EEG patterns can also be created by visual stimuli. Visual evoked potentials are the components of the EEG that arise in response to a visual stimulus. EEG is recorded while patients are subjected to visual stimuli. Visual evoked can be used to examine the visual pathway. Abnormalities can indicate lesions of the optical nerve or multiple sclerosis.

## *Electroencephalography Analysis Methods*

As explained above and as you will see in lab course software examples, there are different types of EEG patterns that can be produced by the brain based on electrode location, environmental inputs, and clinical conditions. One method for diagnosing abnormalities is through a visual inspection of the EEG signals by a trained clinician. However, a trained physician is not always readily available to review these recordings. Therefore, it may be advantageous to use a

computer based program to quantitatively assess the EEG signal and classify it as a particular clinical state.

Several tools are available to provide quantitative analysis of temporal and spectral components of the EEG signal. In addition, this laboratory session will introduce a joint time-frequency analysis (JFTA). This method allows users to analyze signals in both the time and frequency domains simultaneously (Fig 4). It is a useful tool to analyze non-stationary signals. Essentially, this method yields which frequencies are occurring at what times. A graphical representation illustrates how the signal power spectrum changes over time. The basic approach is to divide the signal into several discrete intervals that can be overlapped. A Fourier transform can then be applied to each block of data to illustrate the frequency components of each block. The size of the discrete intervals determines the time accuracy. In other words, the smaller the discrete blocks of time is, the better the time resolution. However, there is a tradeoff to this method. The frequency resolution is inversely proportional to the time resolution. This is known as the window effect. The smaller the discrete interval of time, the less resolution of frequency is provided. The algorithm described above is known as a short-time Fourier transform (STFT).



**Figure 1.** A joint time-frequency analysis can be useful for analyzing many physiological signals.

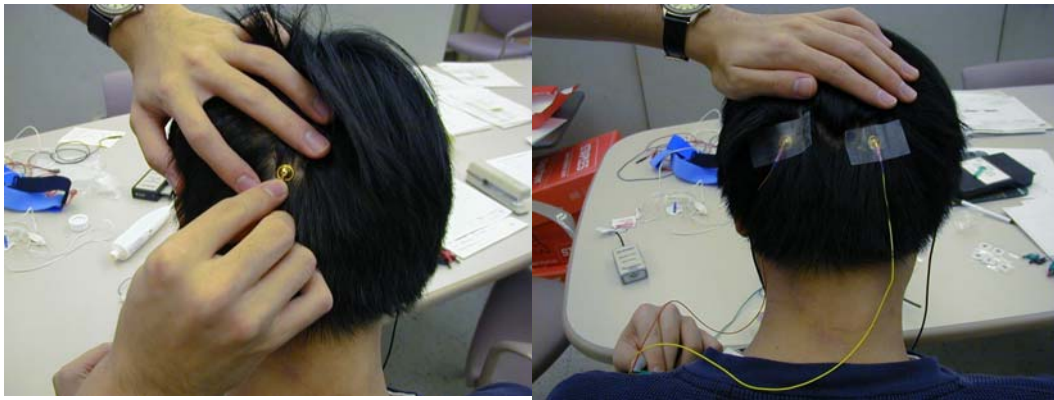
Other algorithms that can be used in the JFTA method include an adaptive spectrogram, a Choi-Williams distribution, a Cone-shaped distribution, Wigner-Ville distribution, and the Gabor spectrum. Each algorithm has a unique impact on the time and frequency resolutions that can be achieved, cross-term interference, and computational speed. The Gabor algorithm expands the signal into a set of weighted frequency-modulated Gaussian functions and is the inverse of the STFT. It has good time and frequency resolution and the speed of the algorithm is moderate. The Wigner-Ville distribution gives high time and frequency resolution but suffers from cross term interference. This algorithm is computationally fast and does not suffer from windowing effects. The Cohen's class algorithms such as the Choi-Willimas, and Cone shaped distributions act to reduce this crossterm interference. Both algorithms provide good time and frequency

response, but computationally they are very slow. The appropriate method to use is based on the particular application at hand.

## Experimental Methods

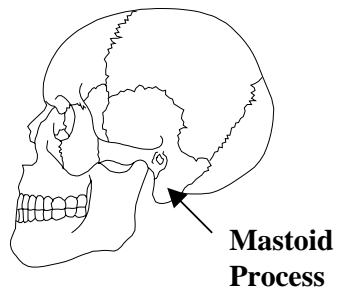
### *Experimental Setup*

During this laboratory session you will record four channels of EEG. Two channels will be recorded from the frontal region and two channels will be recorded from the occipital region. You should view the setup movie included with the CleveLabs software before beginning the experimental setup for this laboratory session.



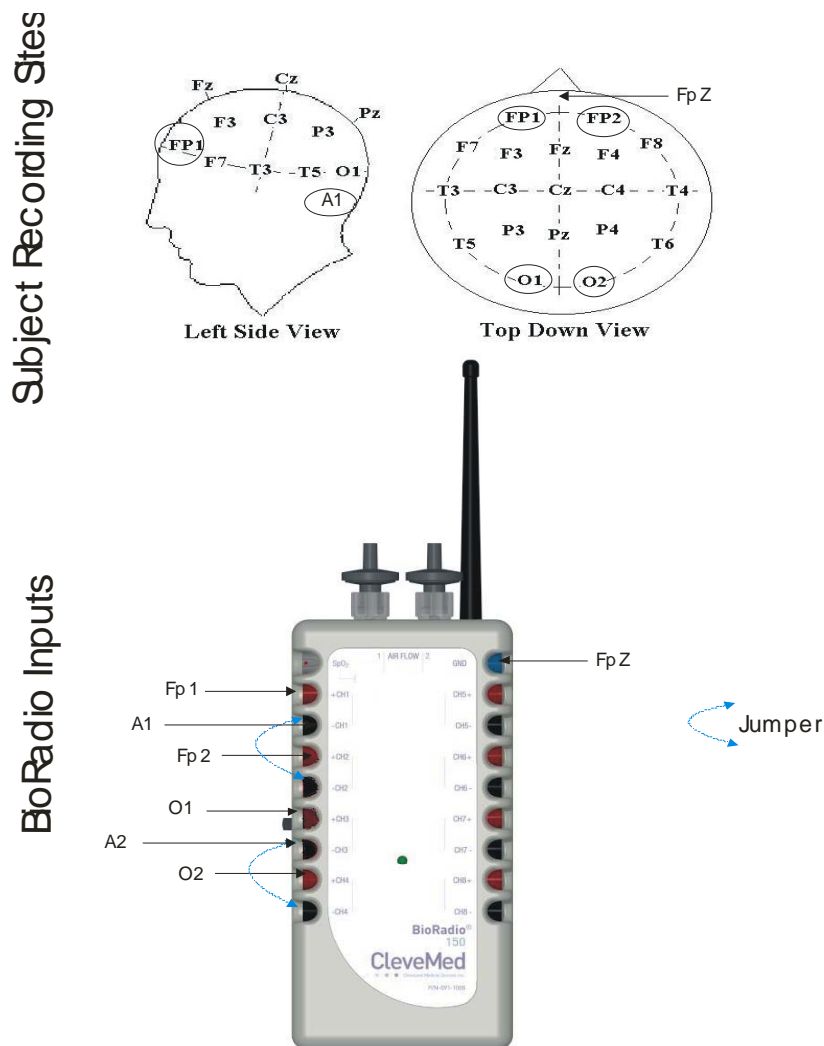
**Figure 2:** Two of the six gold cup electrodes will be placed at O1 and O2 to monitor EEG.

1. If possible, the subject for this laboratory should be a person with shorter hair. The subject also should have their scalp free of any types of hair gel. You will need seven gold cup electrodes for this laboratory. Gold cup electrodes will be placed at locations O1, O2, Fp1, and Fp2 (Figs2, 4) to measure EEG, on each mastoid as references, and at FpZ (middle of the forehead) for the ground. The mastoid processes (A1 and A2) are the bony structures that you can feel behind the ears (Fig 3). Before applying electrodes to the subject it is first important to properly prepare and clean the electrode sites. If needed, refer to previous labs for information on cleaning and preparing electrode sites.
2. Now the gold cup electrodes can be attached. Generously fill a gold cup electrode with the provided conductive gel allowing some gel to fill over the top of the cup. Squeeze some of the conductive gel onto a gauze pad as well. Push the electrode into the gel on the gauze pad and then gently push aside the hair and place the electrode on the back of the subject's head at position O1. Repeat for the other gold cup electrode at locations. The electrode placements for O1 and O2 are illustrated in Fig 2.



**Figure 3:** The mastoid processes are the bony structures located behind the ears.

3. Connect gold cup leads and jumpers to channel inputs 1, 2, 3, 4, and the ground using the picture below as a reference (Fig 4). The left side view of the head is symmetrical to the right side view as seen in the top down view.



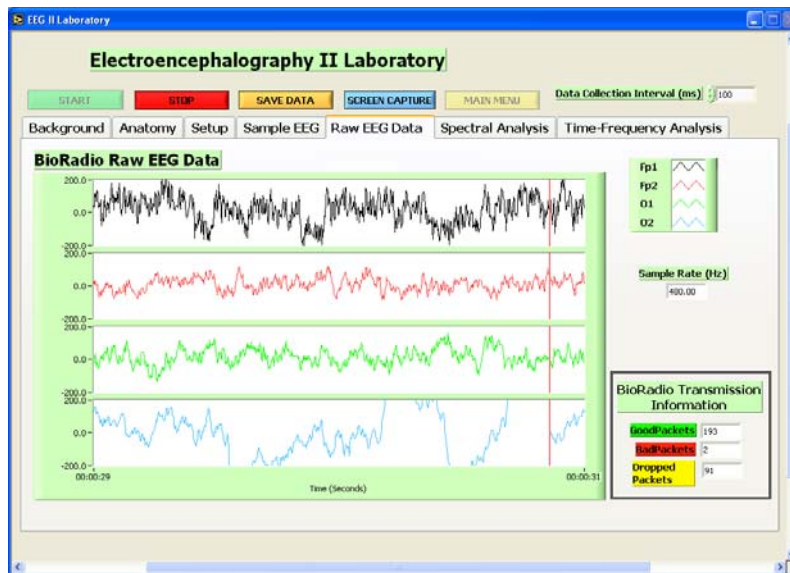
**Figure 4:** Laboratory EEGI Setup

© 2005 Cleveland Medical Devices Inc., Cleveland, OH.

Property of Cleveland Medical Devices. Copying and distribution prohibited.  
CleveLabs Biomedical Engineering Laboratory Course Version 3.0

**Procedure and Data Collection**

1. Run the CleveLabs Course software. Log in and select the “Electroencephalography II” laboratory session under the Advanced Physiology subheading and click on the “Begin Lab” button.
2. Turn the BioRadio ON.
3. Your BioRadio should be programmed to the “LabEEGII” configuration.
4. Click on the “Raw EEG” data Tab and then on the green “Start” button.
5. You should begin to see four channels of EEG scrolling across the screen. Set the time scale to show a 2 second window of data. Click on “Screen Capture” to capture a picture of this to your report. This may not look like EEG yet because you are not filtering out high frequency noise that may be contaminating the signal such as 60Hz noise.

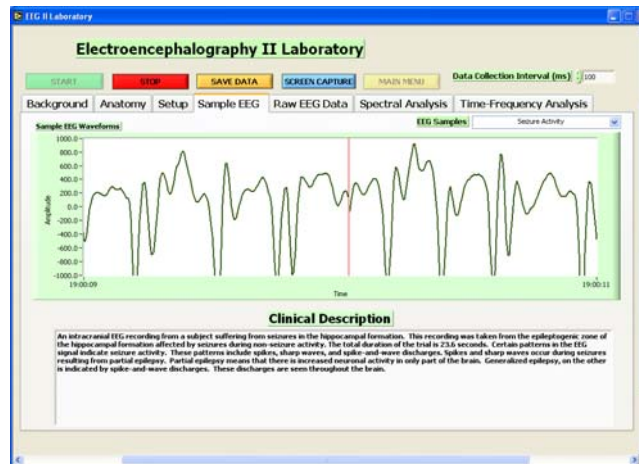


6. Save approximately 30 seconds of data to a file with the subject sitting relaxed and looked at the screen. Name the file “EEGrelaxed”.
7. Now save approximately 30 seconds of data to a file with the subject sitting relaxed and looking at the screen. However, the subject should make a few rapid blinks approximately every few seconds during the data recording. Name this file “EEGblinks”.

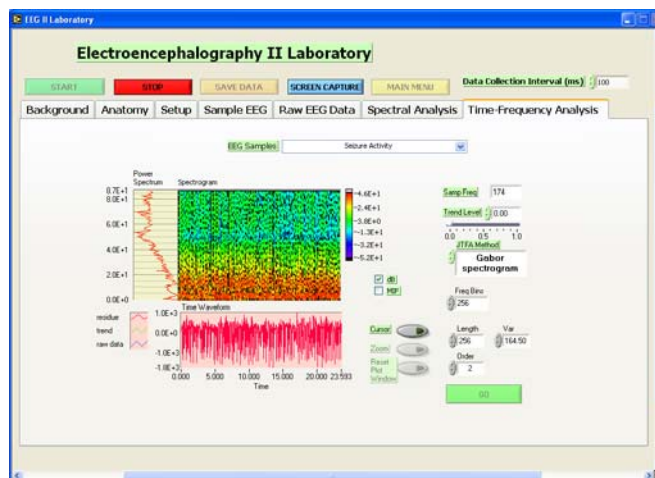


Electroencephalography II Laboratory

8. Now save approximately 30 seconds of data to a file with the subject sitting relaxed and looking at the screen. However, the subject should shake their head a few times during the data recording. Name this file “EEGmotion”.
9. Now click on the tab labeled “Sample EEG”. From the drop down menu select each type of EEG signal from the sample database and examine its temporal characteristics as it scrolls on the screen. Each signal is approximately one minute long and will repeat when it finishes. You should save each of these signals to a data files with the corresponding name for later analysis.



10. Next click on the tab labeled “Time-Frequency Analysis”. This section will allow you to complete a joint time frequency analysis on the data file. Select a file from the drop down box and click on the “Go” button. This will produce a JTFA in the window.
11. Try using each of the sample data files and different JTFA methods and examine the effects on the results.



## Data Analysis

1. Using the post-processing toolbox, MATLAB, or LabVIEW, open the saved data files EEGrelaxed and grandmal. Examine the temporal and spectral features of the signal and describe how you would generate an automated program for detecting seizure activity.
2. Using the post-processing toolbox, MATLAB, or LabVIEW, open the save data files EEGrelaxed, EEGblinks, EEGmotion, and Grandmal. Analyze the signal in both the time and frequency domains. Note how the intentionally generated artifacts in the subject generated data files compare to the seizure activity in the sample data files.

## Discussion Questions

1. Why is it important to use EEG recordings to confirm non-convulsive seizures?

Non-convulsive seizures may not present clinical signs that can be observed to confirm a diagnosis such as the body shaking. Therefore, the abnormal electrical activity occurring in the brain needs to be confirmed by an EEG recording.

2. Is it difficult to distinguish seizure activity from certain types of noise that can exist in an EEG recording? If so, why?

Noise such as motion artifact and blinking can create spike artifacts in the EEG signal. This may mimic a spike that occurs in the EEG signal as a result of a seizure.

3. Describe any quantitative features you found in the time domain that may be useful for quantifying specific cardiac rhythms.

Student responses will vary based on their observations.

4. Describe any quantitative features you found in the frequency domain that may be useful for quantifying specific cardiac rhythms.

Student responses will vary based on their observations.

5. Knowing that seizures generally involve slower brain rhythms, and that spiking behavior usually precedes seizure onset, suggest what factors an automated program should look for when doing automatic EEG analysis. How would noise be dealt with in this automated program?

An automated program can perform an FFT on windowed sections of the data and find the energy in the various EEG bands. When the energy in a lower frequency band overcomes some threshold, then it can classify that as a seizure. Or, if the seizure waveforms are already known, a

cross-correlation method can be used to match a template with the current brain activity, however, the disadvantage to this is that the template may not be the same for all patients. Alternatively, spike detection can be done by looking for sharp transients, either by wavelet decomposition, or a derivative method, looking at the differences in samples. In order to remove noise, a bandpass FIR filter can be constructed that will pass from 5-22 Hz, eliminating 60 Hz noise and any DC offset from EOG.

6. What are the benefits of using a JFTA method to analyze data compared to only using a spectral or temporal analysis technique?

Using a JFTA will illustrate how a power spectrum of a signal changes over time. This allows someone to discover what frequencies are occurring at particular points of time instead of just examining frequency components of the signal as a whole. This method is particularly useful for non-stationary signals.

7. Discuss the tradeoffs between using each type of JFTA method to analyze a biomedical signal. Are there particular reasons to use a specific type of method?

Each algorithm has a unique impact on the time and frequency resolutions that can be achieved, cross-term interference, and computational speed. The Gabor algorithm expands the signal into a set of weighted frequency-modulated Gaussian functions and is the inverse of the STFT. It has good time and frequency resolution and the speed of the algorithm is moderate. The Wigner-Ville distribution gives high time and frequency resolution but suffers from cross term interference. This algorithm is computationally fast and does not suffer from windowing effects. The Cohen's class algorithms such as the Choi-Willimas, and Cone shaped distributions act to reduce this crossterm interference. Both algorithms provide good time and frequency response, but computationally they are very slow. The appropriate method to use is based on the particular application at hand.

8. What effect does the window size have on a JTFA plot using the STFT method? What impact does it have on the resolution of the plot?

The size of the discrete intervals determines the time accuracy. In other words, the smaller the discrete blocks of time is, the better the time resolution. However, there is a tradeoff to this method. The frequency resolution is inversely proportional to the time resolution. This is known as the window effect. The small the discrete interval of time, the less resolution of frequency is provided.

## References

1. Guyton and Hall. Textbook of Medical Physiology, 9<sup>th</sup> Edition, Saunders, Philadelphia, 1996.
2. Kandel ER, Schwartz JH, Jessel, TM. Essentials of Neuroscience and Behavior. 1995.
3. Kooi, Kenneth A. Fundamentals of Electroencephalography, Harper & Row, Hagerstown, MD. 2nd Ed. 1978.
4. National Instruments Corporation. Signal Processing Toolset User's Manual. December 2002 Edition.
5. Goldberger AL, Amaral LAN, Glass L, Hausdorff JM, Ivanov PCh, Mark RG, Mietus JE, Moody GB, Peng CK, Stanley HE. PhysioBank, PhysioToolkit, and PhysioNet: Components of a New Research Resource for Complex Physiologic Signals. *Circulation* 101(23):e215-e220 [Circulation Electronic Pages; <http://circ.ahajournals.org/cgi/content/full/101/23/e215>]; 2000 (June 13).