

# USER MANUAL

**MODEL 1088/I**  
**10BaseT mDSL Rocket**



**PATTON**  
**Electronics Co.**



An ISO-9001  
Certified  
Company

Part# 07M1088/I-C  
Doc# 033111UC  
Revised 07/25/00

SALES OFFICE  
(301)975-1000  
TECHNICAL SUPPORT  
(301)975-1007  
<http://www.patton.com>

## TABLE OF CONTENTS

<u>Section</u>	<u>Page</u>
1.0 Warranty Information .....	2
1.1 Radio and TV Interference	
1.2 CE Notice	
1.3 Service	
2.0 General Information.....	4
2.1 Features	
2.2 Description	
3.0 PPP Operational Background.....	5
4.0 Configuration .....	7
4.1 NetLink Plug-and-Play	
4.2 Configuring the Hardware DIP Switches	
4.2.1 Configuration DIP Switch Set "S2"	
4.2.2 Configuration DIP Switch Set "S3"	
5.0 Installation .....	13
5.1 Connecting DSL Interface	
5.2 Connecting 10BaseT Ethernet Port to PC (DTE)	
5.3 Connecting 10BaseT Ethernet Port to Hub (DCE)	
5.4 Power Connection	
6.0 Operation.....	16
6.1 Power-Up	
6.2 LED Status Monitors	
6.3 LED Descriptions Table	
6.4 Test Modes	
Appendix A - Specifications.....	22
Appendix B - Factory Replacement Parts and Accessories.....	23
Appendix C - Transmission Distance Chart .....	24

## 1.0 WARRANTY INFORMATION

**Patton Electronics** warrants all Model 1088 components to be free from defects, and will—at our option—repair or replace the product should it fail within one year from the first date of shipment.

This warranty is limited to defects in workmanship or materials, and does not cover customer damage, abuse or unauthorized modification. If this product fails or does not perform as warranted, your sole recourse shall be repair or replacement as described above. Under no condition shall **Patton Electronics** be liable for any damages incurred by the use of this product. These damages include, but are not limited to, the following: lost profits, lost savings and incidental or consequential damages arising from the use of or inability to use this product. **Patton Electronics** specifically disclaims all other warranties, expressed or implied, and the installation or use of this product shall be deemed an acceptance of these terms by the user.

### 1.1 RADIO AND TV INTERFERENCE

The Model 1088 generates and uses radio frequency energy, and if not installed and used properly—that is, in strict accordance with the manufacturer's instructions—may cause interference to radio and television reception. The Model 1088 has been tested and found to comply with the limits for a Class A computing device in accordance with the specifications in Subpart J of Part 15 of FCC rules, which are designed to provide reasonable protection from such interference in a commercial installation. However, there is no guarantee that interference will not occur in a particular installation. If the Model 1088 does cause interference to radio or television reception, which can be determined by disconnecting the unit, the user is encouraged to try to correct the interference by one or more of the following measures: moving the computing equipment away from the receiver, re-orienting the receiving antenna and/or plugging the receiving equipment into a different AC outlet (such that the computing equipment and receiver are on different branches).

### 1.2 CE NOTICE

The CE symbol on your Patton Electronics equipment indicates that it is in compliance with the Electromagnetic Compatibility (EMC) directive and the Low Voltage Directive (LVD) of the European Union (EU). A Certificate of Compliance is available by contacting Technical Support.

### 1.3 SERVICE

All warranty and non-warranty repairs must be returned freight prepaid and insured to Patton Electronics. All returns must have a Return Materials Authorization number on the outside of the shipping container. This number may be obtained from Patton Electronics Technical Support at:

tel: **(301)975-1007**  
email: **support@patton.com**  
www: **http://www.patton.com**

**NOTE: Packages received without an RMA number will not be accepted.**

Patton Electronics' technical staff is also available to answer any questions that might arise concerning the installation or use of your Model 1088. Technical Support hours: **8AM to 5PM EST, Monday through Friday.**

## 2.0 GENERAL INFORMATION

Thank you for your purchase of this Patton Electronics product. This product has been thoroughly inspected and tested and is warranted for One Year parts and labor. If any questions or problems arise during installation or use of this product, please do not hesitate to contact Patton Electronics Technical Support at (301) 975-1007.

### 2.1 FEATURES

- Provides MAC Level Data Link (Layer 2) connection between two peered 10BaseT Ethernet LANs
- Operates transparently to higher level protocols such as TCP/IP, DECnet, NETBIOS and IPX
- PPP (Point to Point Protocol, RFC 1661) with Bridge Control Protocol (RFC 1638)
- Automatically learns, loads and removes MAC addresses
- Point-to-Point Connectivity over 2-Wire mDSL up to 10km
- NetLink Plug-and-Play Slave
- HTTP/SNMP Manageable as CP (Customer Premises) Unit with 1095RC CO (Central Office) Rack Card
- Internal or receive recovered clocking between units
- LED indicators for 10BaseT Link, DSL Link, Status, No Signal, Error and Test Mode

### 2.2 DESCRIPTION

The **NetLink™ 10BaseT mDSL Rocket** (Model 1088) is a Multi-Rate DSL Modem that provides seamless MAC Layer connectivity between 2 peered 10BaseT LANs. Now, Enterprise users no longer need to hassle with a bridge and a CSU/DSU or recurring leased line costs. The NetLink Rocket allows users to add additional nodes to a LAN that has reached its maximum distance limits or separate high traffic areas of a LAN. The Rocket connects peered LANs and automatically forwards and receives LAN broadcasts, multi-casts and frames across a 2-Wire DSL span. The 1088/I supports PPP (RFC 1661) and BCP (RFC 1638).

The **NetLink™ mDSL 10BaseT Rocket** features include loop-back diagnostics, inband SNMP/HTTP remote management capabilities using NetLink Plug-and-Play and externally accessible configuration switches. As a symmetric DSL modem, the **NetLink™ mDSL Rocket** offers the same data rates in both directions over a single pair of regular telephone lines using Carrierless Amplitude and Phase (CAP) modulation. The Rocket connects to the DSL line via an RJ-45 jack. Standard power options include 115VAC, 230VAC, Universal (115/230VAC) and any DC input between 36-60VDC.

### 3.0 PPP OPERATIONAL BACKGROUND

PPP is a protocol used for multi-plexed transport over a point-to-point link. PPP operates on all full duplex media, and is a symmetric peer-to-peer protocol, which can be broken into three main components: 1. A standard method to encapsulate datagrams over serial links; 2. A Link Control Protocol (LCP) to establish, configure, and test the data-link connection; 3. A family of Network Control Protocols (NCPs) to establish and configure different network layer protocols.

In order to establish communications over a point-to-point link, each end of the PPP link must first announce its capabilities and agree on the parameters of the link's operation. This exchange is facilitated through LCP Configure-Request packets.

Once the link has been established and optional facilities have been negotiated, PPP will attempt to establish a network protocol. PPP will use Network Control Protocol (NCP) to choose and configure one or more network layer protocols. Once each of the network layer protocols have been configured, datagrams from the established network layer protocol can be sent over the link. The link will remain configured for these communications until explicit LCP or NCP packets close the link down, or until some external event occurs.

The PPP Bridging Control Protocol (BCP), defined in RFC 1638, configures and enables/disables the bridge protocol on both ends of the point-to-point link. BCP uses the same packet exchange mechanism as the Link Control Protocol (LCP). BCP is a Network Control Protocol of PPP, bridge packets may not be exchanged until PPP has reached the network layer protocol phase.

#### 3.1 Applications

In situations where a routed network requires connectivity to a remote Ethernet network, the interface on a router can be configured as a PPP IP Half Bridge. The serial line to the remote bridge functions as a Virtual Ethernet interface, effectively extending the routers serial port connection to the remote network. The bridge device sends bridge packets (BPDU's) to the router's serial interface. The router will receive the layer three address information and will forward these packets based on its IP address.

Figure 1 shows a typical Cisco router with a serial interface configured as a PPP Half Bridge. The router serial interface uses a remote device that supports PPP bridging to function as a node on the remote Ethernet network. The serial interface on the Cisco will have an IP address on the same Ethernet subnet as the bridge.

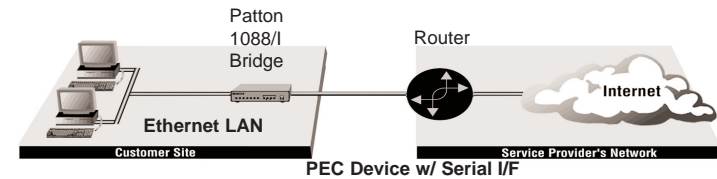


Figure 1. Cisco router with serial interface, configured as PPP Half Bridge.

For example, the customer site is assigned the addresses 192.168.1.0/24 through 192.168.1.1/24. The address 192.168.1.1/24 is also the default gateway for the remote network. The above settings remove any routing/forwarding intelligence from the CPE. The associated Cisco configuration will set serial interface (s0) to accommodate half bridging for the above example.

Authentication is optional under PPP. In a point-to-point leased-line link, incoming customer facilities are usually fixed in nature, therefore authentication is generally not required. If the foreign device requires authentication via PAP or CHAP, the PPP software will respond with default Peer-ID consisting of the units Ethernet MAC address and a password which consists of the unit's Ethernet MAC address.

Some networking systems do not define network numbers in packets sent out over a network. If a packet does not have a specific destination network number, a router will assume that the packet is set up for the local segment and will not forward it to any other sub-network. However, in cases where two devices need to communicate over the wide-area, bridging can be used to transport non-routable protocols.

Figure 2 illustrates transparent bridging between two routers over a serial interface (s0). Bridging will occur between the two Ethernet Interfaces on Router A (e0 and e1) and the two Ethernet Interfaces on Router B (e0 and e1).

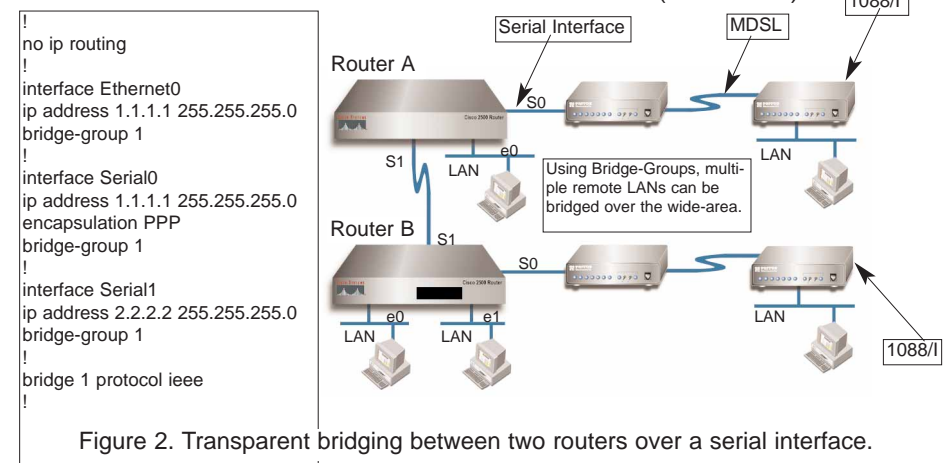


Figure 2. Transparent bridging between two routers over a serial interface.

## 4.0 CONFIGURATION

There are two modes of operation for the model 1088: Plug-and-Play and self configuration. Both are described below.

### 4.1 NETLINK PLUG-AND-PLAY

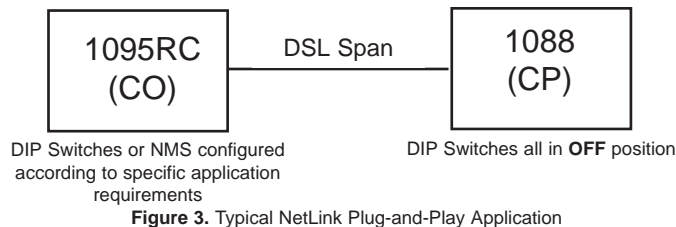
The NetLink Plug-and-Play feature allows ISPs, carriers and PTTs to quickly upgrade the link speed for a customer without requiring a truck roll to configure the Customer Premise (CP) Model 1088. This feature also allows service providers to set up all of the configurations at the Central Office (on the rack cards) before installing the stand alone units, saving time spent configuring or re-configuring DIP switches.

**NOTE: NetLink Plug-and-Play is only available when using a rack-mounted NetLink Model 1095RC as the CO unit.**

The NetLink Plug-and-Play feature allows the user to configure the DTE rate (bandwidth allocation, see Switches S3-1 through S3-6) of the CP unit from the rack card at the Central Office (CO). The stand alone unit at the Customer Premise (CP) site will automatically configure itself to the DTE rate (Bandwidth Allocation) of the rack card. Other configuration parameters remain in the default setting.

Follow the instructions below to activate NetLink Plug-and-Play between CO (Model 1095RC and CP (Model 1088) units:

1. Set the Model 1095RC (CO) to either Internal or External clocking mode as defined by the application.
2. Set the Model 1088 (CP) to "NetLink Plug-and-Play CP" by setting all S2 and S3 DIP switches in the OFF position as described in Figure 3, below.



When the CO and CP units connect over DSL, the CP will enter a predefined default configuration (Receive Recovered Clocking). During the negotiation process between the units, the CO unit will configure the DTE rate/line rate on the CP unit as defined by the settings of the CO unit. When additional bandwidth is required, only the configuration of the CO unit should be changed. This feature gives ISPs, LECs and

PTTs the ability to provision bandwidth on an as needed basis to customers.

The NetLink Plug and Play application will also work in an HTTP/SNMP managed system using the by deploying a NetLink Model 1001MC SNMP agent card with 1095RC cards installed in Patton's 2U rack system. In this application, the system administrator can configure the entire rack through the Network Management Station (NMS) before the stand alone (CP) units are installed. For more information on the HTTP/SNMP management, please refer to the Model 1001MC Operations Manual.

## 4.2 CONFIGURING THE HARDWARE DIP SWITCHES

The Model 1088 has two sets of eight DIP switches, which allow configuration for a wide variety of applications. This section describes switch locations and explains all settings.

The 16 external switches are grouped into two eight-switch sets, and are externally accessible from the underside of the Model 1088, as shown in Figure 4, below.

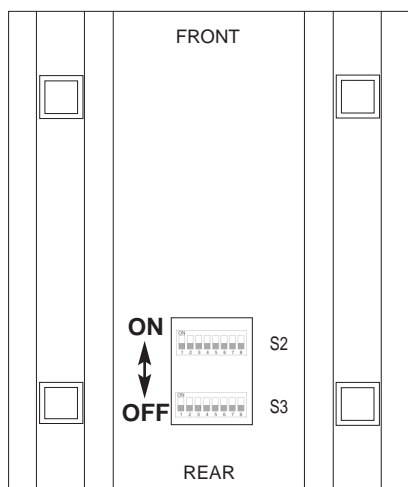


Figure 4. Underside of Model 1088, showing location of DIP switches

The two sets of DIP switches on the underside of the Model 1088 will be referred to in this manual as S2 and S3. As Figure 5 shows, the orientation of all DIP switches is the same with respect to “ON” and “OFF” positions.

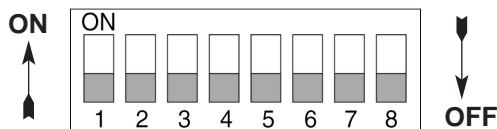


Figure 5. Close Up of Configuration Switches (all sets are identical in appearance)

### 4.2.1 Configuration DIP Switch Set “S2”

The only setting for S2 is for Clocking Mode between Model 1088s. All other switches are reserved for factory usage and must remain in the default configuration. Default settings are shown in the table below.

S2 SUMMARY TABLE		
Position	Function	Factory Default
S2-1	Reserved	Off
S2-2	Reserved	Off
S2-3	Reserved	Off
S2-4	Reserved	Off
S2-5	Reserved	Off
S2-6	Clock Mode	On
S2-7	Clock Mode	Off
S2-8	Reserved	Off

#### Switch S2-1, S2-2, S2-3, S2-4, S2-5 and S2-8:

Switches S2-1, S2-2, S2-3, S2-4, S2-5 and S2-8 are reserved for factory use and must remain in the factory default settings as shown in the table above.

#### Switches S2-6 and S2-7: Clock Mode

Use Switches S2-6 and S2-7 to configure internal, or receive recover (clocking derived from the remote Model 1088 across the DSL span) settings. One Model 1088 (typically the CO, or “Central Office” unit) will be set for Internal Clock. The remote Model 1088 (typically the CP, or Customer Premises unit) will be set for Receive Recover clocking. The table below shows the clock mode settings.

CO/CP Unit	S2-6	S2-7	Clock Mode	Description
CO	On	On	Internal	Model 1088 generates internal, crystal controlled timing.
CP	On	Off	Receive Recover	Model 1088 receives its timing from the CO unit over the DSL span.



## 4.2.2 Configuration DIP Switch Set “S3”

Use the DIP Switches in Switch S3 to set the DTE Rate (for LAN Bandwidth Allocation), the transmit data sampling point and to reset the unit to its software default settings. The following table summarizes default positions of DIP Switch S3. Detailed descriptions of each switch follow the table.

S3 SUMMARY TABLE		
Position	Function	Factory Default
S3-1	DTE Rate	On
S3-2	DTE Rate	Off
S3-3	DTE Rate	Off
S3-4	DTE Rate	Off
S3-5	DTE Rate	On
S3-6	DTE Rate	On
S3-7	Reset Software Defaults	On Normal Operation
S3-8	Reserved	On

### Switch S3-1 through S3-6: DTE Rate

Use Switch S3-1 through S3-6 to provision bandwidth to the LAN in 64kbps increments up to 2.304Mbps. Peak bandwidth utilization on the local domain on an Ethernet LAN runs typically between 15% to 20% (1.5Mbps to 2Mbps) of the maximum bit rate of 10Mbps. Traffic between LANs typically runs even lower -- between 2% to 7% (200kbps to 700kbps) of the maximum bit rate depending upon application and environmental conditions. This is the amount of traffic that will run across the DSL span.

Set Switches 3-1 through S3-6 to allocate bandwidth based upon expected LAN to LAN traffic rates. As an example, set applications which low LAN to LAN bandwidth content between 64kbps and 576kbps. Applications with high bandwidth LAN to LAN content should be set between 576kbps and 2.304Mbps as required.

S3-1	S3-2	S3-3	S3-4	S3-5	S3-6	DTE Rate (kbps)
Off	Off	On	On	On	On	64
On	On	Off	On	On	On	128
Off	On	Off	On	On	On	192
On	Off	Off	On	On	On	256
Off	Off	Off	On	On	On	320
On	On	On	Off	On	On	384
Off	On	On	Off	On	On	448
On	Off	On	Off	On	On	512

Off	Off	On	Off	On	On	576
On	On	Off	Off	On	On	640
Off	On	Off	Off	On	On	704
On	Off	Off	Off	On	On	768
Off	Off	Off	Off	On	On	832
On	On	On	On	Off	On	896
Off	On	On	On	Off	On	960
On	Off	On	On	Off	On	1024
Off	Off	On	On	Off	On	1088
On	On	Off	On	Off	On	1152
Off	On	Off	On	Off	On	1216
On	Off	Off	On	Off	On	1280
Off	Off	Off	On	Off	On	1344
On	On	On	Off	Off	On	1408
Off	On	On	Off	Off	On	1472
On	Off	On	Off	Off	On	1536
On	On	Off	Off	Off	On	1600
Off	On	Off	Off	Off	On	1664
On	Off	Off	Off	Off	On	1728
Off	Off	Off	Off	Off	On	1792
On	On	On	On	On	Off	1856
Off	On	On	On	On	Off	1920
On	Off	On	On	On	Off	1984
Off	Off	On	On	On	Off	2048
On	On	Off	On	On	Off	2112
Off	On	Off	On	On	Off	2176
On	Off	Off	On	On	Off	2240
Off	Off	Off	On	On	Off	2304

**NOTE:** The Model 1088 will automatically select the optimum line rate for the required distance based on the DTE rate set by Switches S3-1 through S3-6. This selection is based on the lowest line rate that will support the DTE rate.

### Switch S3-7: Reset Software Defaults

Use Switch S3-7 to reset the software configured factory defaults. This feature is applicable only using the Model 1001MC to SNMP through Model 1095 central office to manage your units. For more information, please refer to the Model 1001MC Operations Manual.

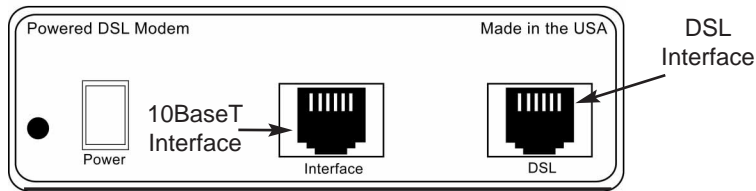
S3-7	Setting
On	Normal Operation
Off	Reset

### Switch S3-8: Reserved

Switch S3-8 is reserved for factory use and must remain in the On position.

## 5.0 INSTALLATION

When the Model 1088 has been properly configured, it may be connected to the DSL twisted pair interface, the 10BaseT Ethernet Interface, and the power source. This section describes these connections.



### 5.1 CONNECTING DSL INTERFACE

The Model 1088 supports communication between 10BaseT Hubs or Workstations at distances to 5 miles (8 km) over 24 AWG (.5mm) twisted pair wire. There are two requirements for installing the Model 1088:

1. These units operate as a **pair**. Both units at the end of the twisted pair DSL span must be set for the same DTE rate.
2. To function properly, the Model 1088 needs one **twisted** pair of metallic wire. This twisted pair must be **unconditioned**, dry, metallic wire, between 19 (.9mm) and 26 AWG (.4mm) (the higher number gauges will limit distance). Standard dial-up telephone circuits, or leased circuits that run through signal equalization equipment, or standard, flat modular telephone type cable, are *not acceptable*.

The RJ-45 connector on the Model 1088's twisted pair interface is polarity insensitive and is wired for a two-wire interface. The signal/pin relationships are shown in Figure 6 below.

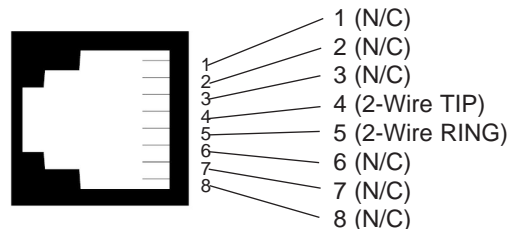
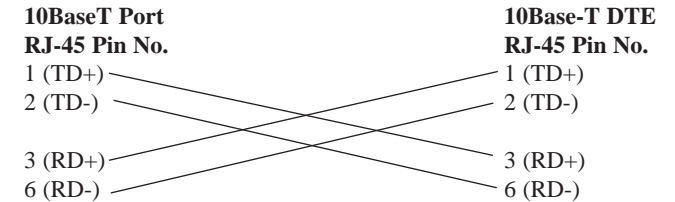


Figure 6. Model 1088 twisted pair line interface.

### 5.2 CONNECTING 10BASE-T ETHERNET PORT TO PC (DTE)

The 10Base-T interface is configured as DTE (Data Terminal Equipment). If the Model 1088 is to connect to another DTE device such as a 10Base-T network interface card, construct a 10Base-T crossover cable and connect the wires as shown in the diagram below.



### 5.3 CONNECTING 10BASE-T ETHERNET PORT TO HUB (DCE)

The 10Base-T interface is configured as DTE (Data Terminal Equipment), just like a 10Base-T network interface card in a PC. Therefore, it "expects" to connect to a 10Base-T Hub using a straight-through RJ-45 cable. Use the diagram below to construct a cable to connect the 10 BaseT interface to a 10Base-T Hub.

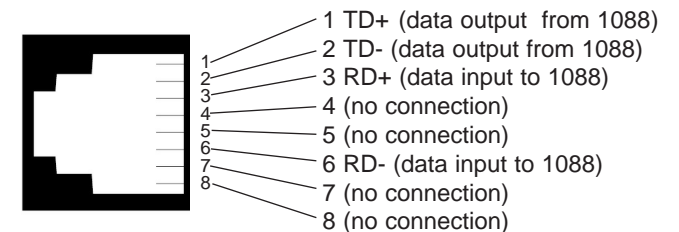
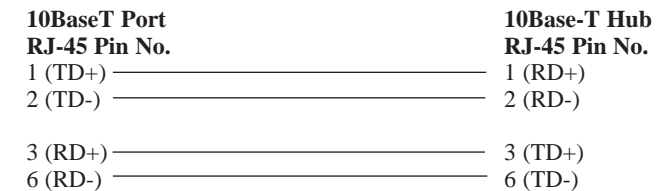


Figure 7. Model 1088 10BaseT Ethernet RJ-45 Connector Pinout



## 5.4 POWER CONNECTION

### Universal AC Power (100-240VAC)

The Model 1088 uses a 5VDC, 2A universal input 100-240VAC, power supply (center pin is +5V). The universal input power supply has a male IEC-320 power entry connector. This power supply connects to the Model 1088 by means of a barrel jack on the rear panel. Many international power cords are available for the universal power supply. Please refer to Appendix B for country-specific power cords.

The Model 1088 powers up as soon as it is plugged into an AC outlet. The Model 1088 does not have a power switch.

### 120 VAC Power (US)

The 100-132 VAC adapter supplied with the U.S. version of the Model 1088 is a wall mount type and may be plugged into any approved 120 VAC wall jack.

### 230 VAC Power (International)

The 230 VAC adapter supplied with the International version of the Model 1088 is a wall mount type and may be plugged into any approved 230 VAC wall jack.

### DC Power

The 36-60 VDC DC to DC adapter supplied with the DC version of the Model 1088 plugs in a DC source (nominal 48VDC) and plugs into the barrel power supply jack on the rear of the 1088/I. Please refer to Figure 8, below, to make the proper connection.



Figure 8. Connecting DC Power to the 48V-PSM DC Power Supply.

**WARNING!** There are no user-serviceable parts in the power supply section of the Model 1088. Contact Patton Electronics Technical support at (301)975-1007, via our web site at <http://www.patton.com>, or by e-mail at [support@patton.com](mailto:support@patton.com), for more information.

## 6.0 OPERATION

When the Model 1088 has been properly configured and installed, it should operate transparently. This sections describes power-up, LED status monitors, and the built-in loopback test modes.

### 6.1 POWER-UP

Before applying power to the Model 1088, please read **Section 5.4** and ensure that the unit is connected to the appropriate power source.

### 6.2 LED STATUS MONITORS

The Model 1088 features six front panel LEDs that monitor connections on the DSL and 10BaseT links, signaling, error and test modes. Figure 9 (below) shows the front panel location of each LED. Descriptions of each LED follow Figure 9.

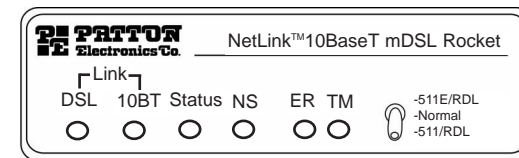


Figure 7. Model 1088 Front Panel

<b>DSL Link</b>	(Active Green) Solid green (On) indicates that the end to end DSL Frammer Link is up, signifying that the link across the DSL span is active. The DSL Link LED is Off when the link is down.
<b>Status</b>	Blinks yellow from one to eleven times to indicate system status. Each pulse pattern is separated by a 2 second "off" period. Greater pulse patterns have higher priority (buffer saturation has greater priority than an empty MAC table). Valid system statuses are: 1 pulse = system status is okay 2 pulses = no MAC entries in the MAC Address Table 3 pulses = Clear to Send (CTS) or Carrier Detect (DCD) from base unit are not asserted 4 pulses = IM1/I buffer is saturated 5 pulses = WAN receive frame(s) too large 6 pulses = WAN receive frame(s) not octet aligned 7 pulses = WAN receive frame(s) aborted 8 pulses = Detected WAN receive frame(s) with CRC

- 9 pulses = Detected LAN receive frame(s) too large
- 10 pulses = Detected LAN receive frame(s) not octet aligned
- 11 pulses = Detected LAN receive frame(s) with bad CRC

- 10BT Link** (Active Green) Solid green indicates that the 10BaseT Ethernet interface has detected a valid SQE heartbeat, signifying a valid 10BaseT connection.
- NS** (Active Red) Solid red indicates that the Digital Signal Processors (DSPs) are not linked.
- ER** (Active Red) Flashing red indicates CRC Errors on DSL (Framer) side if DSL Link is active or if bit errors are received during loop/BER test.
  - ER flashes once to indicate a CRC error (during normal operation) or bit errors (during Remote Loopback 511/511E tests).
- TM** (Active Yellow) Solid Yellow indicates an Active Test Mode. The unit may be placed in test mode by the local user or by the remote user.

### 6.3 LED STATUS TABLE

<u>LOCAL</u>										<u>REMOTE</u>									
10BaseT	DSL	Status	NS	ER	TM	10Base-T	DSL	Status	NS	ER	TM	10Base-T	DSL	Status	NS	ER	TM	10Base-T	DSL
Power ON	G*	off	F	ON	off	off	G*	off	F	ON	off	off	G*	off	F	ON	off	off	G*
DSL Link	G*	G	F	off	off	off	G*	off	F	off	off	off	G*	off	F	off	off	off	G*
Link Brk	G*	off	F	off	off	off	G*	off	F	off	off	off	G*	off	F	off	off	off	G*
Brk+ 10s	G*	off	F	ON	off	off	G*	off	F	ON	off	off	G*	off	F	ON	off	off	G*
RDL	G*	G	F	off	off	ON	G*	off	F	off	off	ON	G*	off	F	off	off	ON	G*
RDL+511	G*	off	F	off	off	ON	G*	off	F	off	off	ON	G*	off	F	off	off	ON	G*
With DTE Connected										With DTE Connected									
Mark	G*	G	F	off	off	off	G*	G	F	off	off	off	G*	G	F	off	off	off	G*
Space	G*	G	F	off	off	off	G*	G	F	off	off	off	G*	G	F	off	off	off	G*
Data	G*	G	F	off	off	off	G*	G	F	off	off	off	G*	G	F	off	off	off	G*

Link Brk = DSL Link Broken  
 Brk+10s = 10 Seconds following Link Break  
 G=GREEN  
 O=ORANGE  
 ON= ON  
 off= OFF  
 F=Flashing  
 G\*=Green if a valid 10Base-T connection is detected.

## 6.4 TEST MODES

The Model 1088 offers a proprietary Remote Loopback test modes, plus a built-in V.52 BER test pattern generator to evaluate the communication status between units. Activate this test mode by toggling the Test Mode Switch on the front panel of the unit.

### 6.4.1 Overview

Figure 10 below shows the major elements used in the loop-back and 511 pattern tests available in the Model 1088. Each block has several functions. Following Figure 10 are descriptions of the elements during Test Modes.

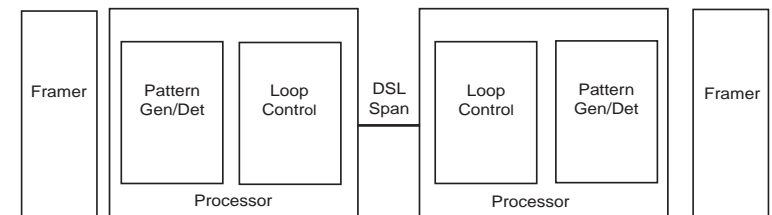


Figure 10: Block Diagram- Two Model 1088s Communicating Over the DSL Span

#### Framer

The framer determines the status of the line. In normal operation the framer transmits and expects to receive framed packets from the far end. If the framer receives framed packets from the far end, the DSL Link LED will turn on. If framed packets are not received, the DSL Link LED will turn off. The restart procedure uses this information to determine if a valid connection is made (cable disconnect, poor cable quality, etc). In normal Data Mode, if the box receives 4 seconds of unframed packets it will restart the box and begin trying to re-establish a connection

with the the remote Model 1088. The distinction between framed packets and unframed packets becomes important when we discuss the Pattern Generator.

#### Pattern Gen/Det

This part of the Processor generates and detects the 511/511E patterns. When transmitting 511 patterns, the information is unframed (because it originates after the framer) and is intended to be evaluated only by another Processor. If the units are



transmitting data and the pattern generator is enabled on one end of the link, the far end will begin receiving unframed packets and assume that the line has gone down. During test modes, the pattern generator is forced to time out before it can cause the DSL link to go down.

**Loop Control** This part of the Processor is used to control Remote Loopback test mode. In a Remote Loop, the 511/511E data is looped back to the line and to the remote unit over the DSL span.

**Restart Procedure and Time Outs** The restart procedure is in place to allow the units to re-establish a connection after the framer begins seeing unframed packets. The Test Mode Timing Chart below shows the amount of time the framer must see consecutive unframed packets before the unit will restart and try to establish a new line connection. The reason that there are different Restart Times will become apparent after reading the rest of the document. The 511/511E Time Out shown refers to the amount of time the 511/511E pattern will be valid. At the end of this time the pattern will automatically turn itself off and the normal data path will be re-established. The ER led will flash indicating to the user that the test has timed out. The ER led will stop flashing once the 511/511E switch is placed into the normal position.

Test Mode Timing	
Item	Elapsed Time (seconds)
Start Up	50
Data Mode	4
511/511E Generator Enabled	60 (The generator will stop after 45 seconds.)
Remote End of an RDL	60
511/511E Time Out	45 (The pattern generator will automatically turn off after 45 seconds. The ER LED will flash until the user turns off the 511/511E switch.)

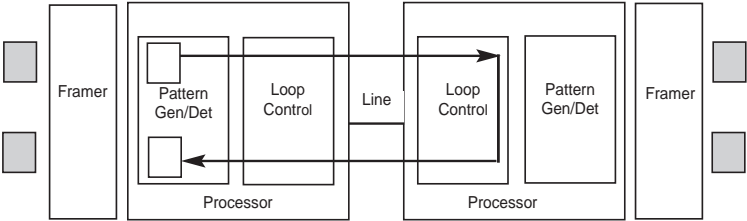
**Symbol Indicators**

-  This symbol designates the origination or the termination of a data path. The direction of the arrow connected distinguish the two data paths.
-  This symbol designates an invalid data path. If there is data present it should be ignored.

**6.4.2 Loops and Patterns**

The following section describes the Remote Loopback/BER test modes.

**Remote Digital** When Remote Loop/511 or Remote Loop/511E is enabled via the front panel switch, the Remote unit's Restart Timer is set to one minute. This is because when the 511/511E generator is initiated on the local unit, the Remote framer begins seeing unframed packets. The Remote unit can not distinguish the 511/511E pattern from the line being disconnected, so the Restart Timer has been lengthened to allow the pattern generator to function. Once the 511/511E test is started, the Local unit changes its' Restart Timer to one minute. The pattern originates within the Processor and is sent to the Remote unit. It is then looped back to the Local unit where it is evaluated for errors. After 45 seconds, the Pattern Generator will timeout and stops sending the pattern. The ER led will begin blinking until the user turns off the 511/511E switch.



**6.4.3 Using the V.52 (BER) Test Pattern Generator**

To use the V.52 BER tests in conjunction with the Remote Digital Loopback tests, follow these instructions:

1. Locate the Remote Loop/511 & Remote Loop/511E toggle switch on the front panel of the 1088 and move it DOWN. This activates the Remote Loop with V.52 BER and transmits a "511" test pattern into the loop. If any errors are present, the local unit's red "ER" LED will blink sporadically.

2. If the above test indicates no errors are present, move the test switch V.52 toggle switch UP, activating the “511/E” test with intentional errors present. If the test is working properly, the local unit’s red “ER” LED will blink. A successful “511/E” test will confirm that the link is in place, and that the Model 1088’s built-in “511” generator and detector are working properly.

## APPENDIX A

### PATTON ELECTRONICS 10BASE-T MDSL ROCKET SPECIFICATIONS

<b>Clocking Modes:</b>	Internal or Receive Recovered
<b>DTE Rate:</b>	All 64k increments from 64 to 2304 kbps
<b>Diagnostics:</b>	V52 compliant (511/511E) pattern generator and detector with error injection mode and Remote Loopback control by a single front panel switch
<b>LED Status:</b>	The following LEDs are displayed on the front panel: <b>DSL Link (Green Active)</b> - DSL Link Active <b>10BT Link (Green Active)</b> - Valid Ethernet Connection <b>Status (Flashing Yellow)</b> - Status indication from the Ethernet port <b>NS (Red Active)</b> - No signal on DSP Link <b>ER (Flashing Red)</b> - CRC error during normal operation, bit error during pattern generation test <b>TM (Active Yellow)</b> - Test Mode Enabled
<b>Configuration:</b>	Externally accessible dip switches or SNMP/HTTP managed through 1095RC
<b>Power:</b>	+5V External desk top power supply, 100-240VAC, 50-60 Hz (Universal Input), 10W or -48 VDC
<b>Compliance:</b>	FCC Part 15, CE mark
<b>Transmission Line:</b>	Single Twisted Pair (2 wires)
<b>Line Coding:</b>	CAP (Carrierless Amplitude and Phase Modulation)
<b>Line Rates (DSL line):</b>	144, 272, 400, 528, 784, 1040, 1552, 2064, 2320 kbps
<b>Line Interface:</b>	Transformer coupled, 1500 VAC isolation
<b>mDSL Physical</b>	

### ETHERNET SPECIFICATIONS

<b>Connection:</b>	RJ-45, 10Base-T 802.3 Ethernet
<b>Protocol:</b>	PPP (RFC 1661) with Bridging Control (RFC 1638)
<b>Address Aging:</b>	Entries are deleted after 8 minutes of inactivity
<b>Frame Latency:</b>	1 Frame
<b>Frame Buffer:</b>	512 Frames
<b>Ethernet Physical Connection:</b>	pin 1 TD Data + pin 2 TD Data - pin 3 RD Data + pin 6 RD Data + pins 4, 5, 7, 8 no connection

## APPENDIX C

### Transmission Distance Chart

		NO NOISE													
Line Rate	DTE Rates	26g (0.4mm)		24g (0.5mm)		22g (0.6mm)		20g (0.8mm)		19g (0.9mm)		18g (1.0mm)		16g (1.2mm)	
kbps	kbps	feet	miles	feet	miles	feet	miles	feet	miles	feet	miles	feet	miles	feet	miles
144	64, 128	21400	4.0	30700	5.8	42980	8.1	55260	10.4	64470	12.2	70610	13.4	90784	17.2
272	192, 256	20300	3.8	30600	5.8	42840	8.1	55080	10.4	61200	11.6	70380	13.3	90488	17.1
400	320, 384	18600	3.5	29100	5.5	40740	7.7	52380	9.9	55290	10.5	66930	12.7	86053	16.3
528	448, 512	17400	3.3	26100	4.9	36540	6.9	46980	8.9	49590	9.4	60030	11.3	77181	14.6
784	576-768	15800	3.0	22600	4.3	29380	5.6	38420	7.3	42940	8.1	51980	9.8	67974	12.9
1040	832-1024	15500	2.9	22100	4.2	28730	5.4	37570	7.1	41990	7.9	50830	9.6	66470	12.6
1552	1088 - 1536	13600	2.6	19200	3.6	24960	4.7	32640	6.2	34560	6.5	44160	8.3	57748	10.9
2064	1600 - 2048	12200	2.3	17200	3.3	22360	4.2	29240	5.5	30960	5.9	39560	7.5	51732	9.8
2320	2112 - 2304	11500	2.2	15800	3.0	20540	3.9	26860	5.1	28440	5.4	36340	6.9	47522	9.0

## APPENDIX B

### PATTON ELECTRONICS MODEL 1088 FACTORY REPLACEMENT PARTS AND ACCESSORIES

Patton Electronics Model #	Description
1088/I .....	10BaseT mDSL Rocket (CAP)
48V-PSM.....	DC Power Supply Module
08055DCUI .....	100-240VAC (+5V ±5% reg. DC/2A) Universal Input Adapter
0805EUR .....	European Power Cord CEE 7 ("A")
0805UK .....	United Kingdom Power Cord ("D")
0805US .....	American Power Cord ("K")
0805AUS.....	Australia/New Zealand Power Cord ("C")
0805DEN.....	Denmark Power Cord ("E")
0805FR.....	France/Belgium Power Cord ("F")
0805IN.....	India Power Cord ("G")
0805IS.....	Israel Power Cord ("H")
0805JAP.....	Japan Power Cord ("J")
0805SW.....	Switzerland Power Cord ("L")
07M1088/I .....	User Manual

Copyright ©2000  
Patton Electronics Company  
All Rights Reserved