



User Manual

PL300

PROVIA

Thank you for purchasing the A-100 of Goodwill Display Co., Ltd.

Customer support is through the website.

Provia through the online services for the product to get support and other benefits.
The website (www.provia.co.kr) from time to time by updating our product data is always up to date.

- Product upgrades and announcements site
- Viewer program download

Notice

- Shown in this manual, including pictures and drawings to help you understand the user's different from the real thing, and are subject to change without notice.
- Contained in this manual is product of the specification or feature performance and for quality improvement, the is subject to change without notice.
- The content of the manual of the device S/W version or operators may vary depending on the circumstances, and are subject to change without notice.

0 Contents

1. Product Overview

Product overview1

2. Precautions

Precautions2

3. Preparation of before use

Basic components.....3

Names of parts3

4. To understand how it works4

4-1 How to use

4-2 Check operation and SD Memory Usage

4-3 Product status LED actions guidance

4-4 How to use parking and normal recording mode

4-5 Built-in high sensitive microphone

4-6 Select the voice recording function

4-7 Video Memory function

4-8 Manual recording function

4-9 Memory Format Function

4-10 Changing of setting function by viewer

0 Contents

5. How to Installation

Installation5

6. Replay to recording pictures

View recorded video on your PC by connecting.....6

7. Remarks

Specification & Features.....7

1

Product Overview

Product Overview

- Connect the power supply after 8 seconds to start video recording is a advanced video black box.
- This product is powered on at the time of the first continuous video recording is possible, through the regular power supply for more than 48 hours video recording, please be careful the risk of discharging the vehicle battery.
- This product is built-in super capacitor even when the power supply is not possible to store images securely.
- Super capacitor to maintain the stability of the product in high temperature.
- GWD Co., LTD. All rights in the Program on the display, and is protected by copyright.
- The information contained in this manual in order to improve the quality of the product are subject to change without information

2

Precautions

Precautions



Cautions parking records

Please be careful used regular power supply, the vehicle battery may be discharged.



Carefully operate high temperature and low temperature. (Operating Temperature : -10 ~ 60℃)

Extreme temperatures in summer and winter parking in place for a long time, if more than one available immediately after the operation behavior. The vehicle's interior temperature reaches the proper temperature before use.



Be careful not to let any foreign materials.

Immersion, shock, fire, due to the body or the records are stored on the SD card is lost when camera may not be stored recorded files. By the manufacturer of the above shall not be liable.



Do not disassemble, repair or modification by yourself.

Please do not disassemble the product and modifications. It may cause fire, electric shock or a problem with the product. Please contact an authorized service center repair is required. You will not be able to receive the service free of charge with respect to the defects that occurred if the user disassemble and repair.

2

Precautions

Precautions



Do not place metal objects.

GPS antenna is attached to the metal part of placing the goods received GPS data can degrade performance



GPS reception may take some time.

Started Car for receiving GPS satellite requires a certain amount of time to the weather and can vary depending on the circumstances.



Abnormality, do not use in the situation.

Smell the presence of such abnormal symptoms continue to be the cause of the fire as you can. Turn off the power, then Please consult by headquarters or A / S center.



Absolute do not remove the SD card during working of product.

Black box is operating do not remove the SD card. That's why Product malfunction is likely to cause and SD card may be damaged.

2

Precautions



Please keep stored important data to other storage devices (HDD, CD, and removable disks).

Normal Recording, event recording and parking recording at a ratio of 55:15:15 recording has been allocated. This is primarily a record store to buy the 8G capacity by emergency recording 116 minutes(Over 2.0 hours) after the auto overwrite feature documentary may be cleared. Significant accident record in the fastest time, please check and transferred to PC.

Deleted by user's fault, the manufacturer shall not be liable.

At least twice a month and the data at least once a week in order to determine, please be a formatting the SD card for the product is in proper operating condition.

SD memory card is a consumable item replaced every six months and recommended formatting 1 times a month. Please prolonged use, you may not be able to save the new data that you use to buy a new memory card, because life itself. Beyond the warranty period, deleting data used for a long period of time due to the problems caused due to the SD card, we cannot be held responsible for any Thank you for your understanding



Incase without Power "ON"

Make sure that the SD card is properly connected to the cigarette lighter fuse terminal has been disconnected, please try things.

Deleted by user's fault, the manufacturer shall not be liable.

Check the status of the LED mounted on the main unit to verify that the power supply is normal, If applicable.

3

Before Use

Product component



Main
Unit



Rear
Camera



Car Mounts



Power adaptor
& cable



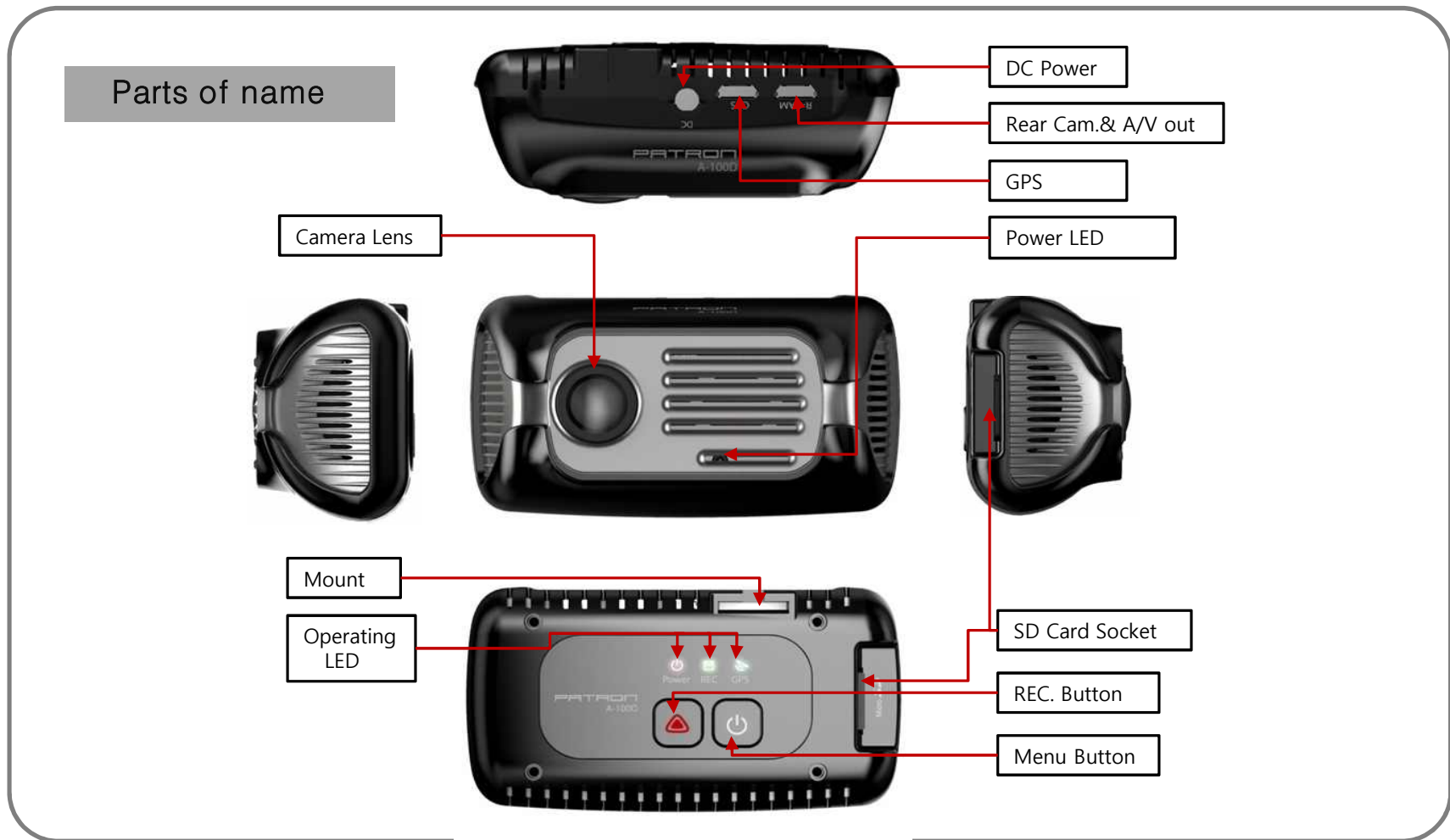
Micro SD Memory



User Manual

3

Before Use



4 Operating

Install & Operating

4-1. How to Use

1) Power ON/OFF

And the input power (Start ON) 8 seconds after the normal recording mode, the system automatically starts. (Front blue LED lights, the rear red LED lights, the rear blue LED lights up after starting 12 seconds)

When sensing the shock the vehicle work front and rear blue LED for 15 seconds together. Impact from the time before / after 30 seconds, including continuous recording and re-recording mode (blue LED ON) .

Vehicle to discharge a regular power supply during cold winter there are a lot of risks, Please turn off the power when vehicle is not driving a long time.

2) Information Date occurs, position information display

This product time and location information is stored along with the image of the above information can be checked easily.

The above information is provided as a service to download from the website of the program, but only the viewer can check, and if you want to see only the images that are provided free of charge to the other Viewer

4

Operating

4-2 Check operation and SD Memory Usage

1) Check the status of the rear LED lamps

RED LED ON ----- Check power connection [always turns on when power is connected.]

BLUE LED ON ----- Normal recording mode

BLUE LED Blinking ----- Event recording model, Manual recording mode

BLUE LED OFF ----- Parking recording mode

GREEN LED ON ----- GPS connected

2) Check video by PC

You can find video files on the dedicated viewer or public viewer from SD card connected to the PC.

4 Operating

3) Save the file description in SD Memory

The making to save file name is "Mode name / year / month / day / hour / minute / second" to adopt that you want to easily record the video you can see the time zone.

※ Folder & File Name

File Name : Mode name_Year_Month_Day_Hour_Minute_Second_1ch/2ch.avi

Normal Record File

ex) Black Box\Wrec\2013_01_20_06_01\WREC_2013_01_20_06_01_56_D.avi

Event Record File

ex) Black Box\WEvent\2013_01_20_06_01\WEVT_2013_01_20_06_01_56_D.avi

Manual Record File

ex) Black Box\WManual\2013_01_20_06_01\WMAN_2013_01_20_06_01_56_D.avi

4 Operating

4) SD Memory Storage

Record Mode	Recording Time	8GB	16GB	32GB
		Capacitive	Capacitive	Capacitive
Normal	60 sec.	4GB	8GB	16GB
Parking	30 sec.	2GB	4GB	8GB
Event	30 sec.	1GB	2GB	4GB
Manual	30 sec.	0.5GB	1GB	2GB
Snap shot	-	200 pcs	200 pcs	200 pcs

- ◆ Parking recording is full Frame recording to stored in one-minute increments.
- ◆ Normal recording does not occur by event.
- ◆ The number of files stored in the image size may vary.

4 Operating

4-3 Product status Rear LED operating guidance

MODE	LED STATUS				REMARK
	Front	Rear			
Booting	BLUE ON ●	RED ON ●	BLUE ON ○ ●	GREEN OFF ○	
Normal Recording	BLUE ON ●	RED ON ●	BLUE ON ●	GREEN OFF ○	
Manual Recording	BLUE ON ● ○	RED ON ●	BLUE Blink(10sec.) ● ○	GREEN OFF ○	
Event Recording	BLUE ON ● ○	RED ON ●	BLUE Blink(3sec.) ● ○	GREEN OFF ○	
Parking Recording	BLUE ON ● ○	RED ON ●	BLUE ON ○	GREEN OFF ○	
Without SD Card	BLUE ON ●	RED ON ●	BLUE ON(3sec.) ○	GREEN OFF ○	

4 Operating

4-4. How to use parking and normal recording mode

When using the normal recording after parking(Regular power supply)

- ※ This product is powered on at the time of the first continuous video recording is possible, through the regular power supply for more than 48 hours video recording, please be careful the risk of discharging the vehicle battery.
- ※ SD memory card is a consumable item replaced every six months and recommended formatting 1 times a month. Please prolonged use, you may not be able to save the new data that you use to buy a new memory card, because life itself. Beyond the warranty period, deleting data used for a long period of time due to the problems caused due to the SD card, we cannot be held responsible for any Thank you for your understanding

4-5 . Built-in high sensitive microphone

This product is built-in high sensitivity microphone recording the actual incident and the exact site conditions will be heard vividly .(Can check voice recording by Viewer)

4-6 . Select the voice recording function

If you want to make a voice recording by pressing the button on the back of the product is not a voice recording.
(The Ability to protect the privacy)

4

Operating

4-7. Video Memory Function

This product automatically saved as 30 frames when vehicle crash, contact an accident, sudden stop, the road surface irregularities detected at the time of the impact of the event before and after the shock image. The product images with impact shock time, and velocity data at the same time to save.

4-8. Manual Recording function

The record button on the back of the product for more than 3 seconds, the current image up to 100 in increments of 1 minute are stored force. Recording file not creation over 100 files, after 100 files will overwritten first recorded file.

(Manual recording file name : Black Box#Manual#2013_01_20_06_01#MAN_2013_01_20_06_01_56_D.avi)

Please download "PC Viewer program" as below followings,

※This product Normal, Events, Parking recording automatically AUTO OVER WRITE function (automatically overwrite) the built-in SD memory card with a capacity of the FULL sequentially from the oldest data when the record is deleted are taking the way.(Normal record : 55% , Event record : 15%, Manual record : 15%, Parking record : 5%)

4 Operating

4-9. Memory Format Function



Press the Voice button and the Record button at the same time

1. Press the Voice button & Recording button at the same time for the 5 sec. after following the voice guidance press the Recording button again to formats are in progress.
2. We recommend connect to the PC for formatting the memory card.
3. Formatting the memory card every two weeks should be done on a regular basis, more stable and can be recorded and stored.

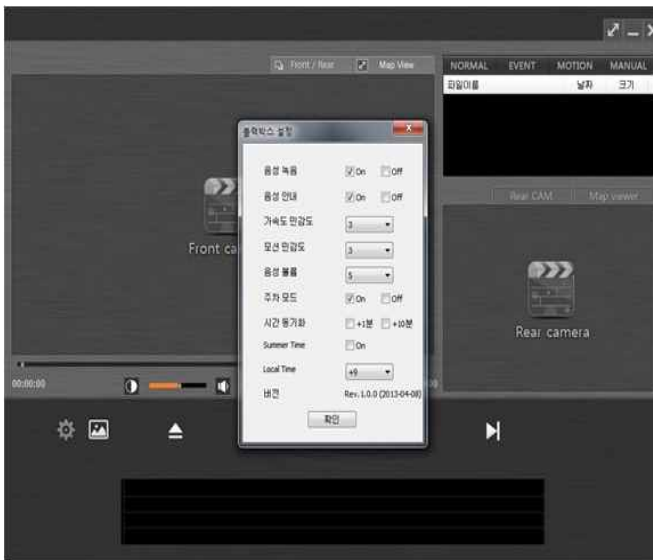
* **Warning**

- Please save important file to other storage device before formatting the memory card. Because when processing the formatting the memory card will be delete all file in memory card.

4 Operating

4-10. Change the setting function by viewer

Shock sensitivity can be set up to step 5 is programmed by the user can be set to the desired level.



Function	Setting	Parameter	Remark	Default
Voice Rec.	Set to voice rec.	ON/OFF		ON
Announce	Set to announcement	ON/OFF		ON
Acceleration Sensitivity	Set to shock level Sensitivity	1~10	Lower is high sensitivity	3
Motion Sensitivity	Set motion sensitivity	1~5	Lower is high sensitivity	3
Volume	Set volume of announcement	1~5	High is Max. volume	5
Parking Mode	Set to parking mode	ON/OFF		ON
Time Synchronization	Time recording / set to booting	Not used /+1min./+10min.		
Summer Time	Set to summer time	ON/OFF		OFF
Local Time	Set to country	-11~+12	Seoul +9	+9

5

How to Installation

Installation

1. To be attached to the product and foreign objects attached to wipe clean
 2. The mounting position is recommended, preferably near the rearview mirror the driver's field of view does not cover the rearview mirror affect the operation. To avoid tinted part the upper part of the windshield of the car tinted because the GPS receiver sensitivity degradation
 3. Remove the plastic holder of the double-sided tape to center align the front glass is firmly attached.
 4. Connecting to the power connection jack by cigar jack adaptor.
Please connect before connect to cigar jack cable if using the video out cable, may be power off.
 5. Power and video cables through the ceiling and pillars should be installed by sliding it invisible.
 6. Regular power supply connection, depending on the state of the vehicle and the surrounding environment during the regular power supply connection, it may cause a malfunction, please use the specialized mounting points.
Vehicle to discharge a regular power supply during cold winter there are a lot of risks.
Please turn off the power when vehicle is not driving a long time.
- ※ Shall not be liable for injury and damage caused by willful damage or improper use and operate of this product.
Should not used for any other purpose in accordance with the Privacy Act and related laws, and for the purpose of installing this product, or tamper and not record voice of someone else the law is the responsibility of the user accordingly.
GWD is not responsible for the profit and loss(pecuniary loss, loss of business and indirect damages) caused the accident.

5

How to Installation

Installation (with Pictures)



1. Remove double side tape



2. Connect to Mounter



3. Mounted side or behind of mirror
(※ careful tinted part of the windshield)



4. To fix and adjust the angle



5. Connect to Cigar jack power



6. Finished Install

6

Replay to recording pictures

View recorded video on your PC by connecting

1. Minimize button
 - Hide PC Player screen.
2. Exit button
 - Exit PC Player.
3. Record video playback screen
 - Recorded video is played.
4. Record List screen.
 - Renewable displays a list of the recorded video file.
 - Currently playing recorded video is displayed in white.
5. Display the recording date.
 - Record date information stored on recorded images are displayed.
6. G-Sensor information
 - G-Sensor information is stored in recorded video is displayed in a graph.
 - Each of the actual value of the graph X, Y, Z are displayed on the item.
7. Recorded video play controller
 - Change the location of the recorded video playback.
 - Playback position corresponding to the location to display the graph G-Sensor.
8. Previous file play button
 - Recorded video file from the list displayed on the currently playing video to play.
9. Play / Pause button
 - Recorded video file is play or pause.
10. Stop button
 - Recorded video file is stop.
11. Next file play button
 - Recorded video from the list shown below the currently playing video files.
12. Recording Folder button
 - Recorded video to find the folder where you saved the 'Browse for Folder' dialog box is running.
13. Select to front or rear camera
14. Map View
15. Select recording mode(Normal Mode, Event Mode, Motion Mode, Manual Mode)



7

Remarks

Specification

Camera	Lens	CMOS
	Illumination	1.0 LUX
	Angle/Pixels	120° / HD 720P
Recording	Type	MPEG4
	Resolution	1280 x 720
	1Ch Frame	30 frames
	2Ch Frame(Main/Rear Camera)	20fps/15fps
	Acceleration sensor	3 axis sensor
Memory	SD CARD	2GB~32GB
Battery	Super Cap.	5F/5V
Others	POWER	DC 12V~24V
	GPS	Option
	Temperatures	-10℃ ~ 60℃