

Streamlite

Owner's Handbook



BOWENS
the power behind the picture

BWL0575 | Streamlite 330 and 530

07/2010

Streamlite

Owner's Handbook



BOWENS
the power behind the picture

warranty

Contents	
Warranty	2
CE Mark	2
.....	
Introduction	3
.....	
Safety Notes	3
.....	
Streamlite 330	4
.....	
Streamlite 530	5
.....	
Operation	6
.....	
Operation	7
Cocoon & Cocoon Stand Assembly	7
.....	
All Bowens electrical products are covered by a two year warranty against any faulty design, materials and workmanship.	
If a product does not work on arrival or up to a maximum period of four weeks from the date of purchase, it should be returned to the dealer/retail outlet from where it was purchased, to exchange (if available) the faulty unit for a new one; if the faulty unit was part of a kit that was purchased, the dealer / retailer may choose to simply replace the unit and not the entire kit. Alternatively the dealer may offer to repair the unit as soon as possible at no charge.	
If neither an exchange or repair is possible for the faulty unit, then a full refund may be made.	
If a warranty fault occurs after the initial four week period (and within the max two year warranty period), then the unit should be returned to the dealer, who will arrange to repair the unit as soon as possible, at no charge.	
This warranty does not apply to consumable items such as flash tubes, modelling lamps, fuses, consumable type batteries.	
Should a unit be returned at any time within the two year warranty period, and it is judged to have experienced any of the following points, failure to follow working instructions correctly, accidental or willful damage, misuse, alteration or repair by a non authorised Bowens service / repair centre, then the warranty will be deemed invalid and any repairs that may need carrying out will be payable by the owner.	
The cost of any repairs should be notified to the owner, by the dealer, in advance of undertaking any work that may be required.	
No warranty repairs can be undertaken to any units without proof of purchase.	
All warranty repairs or returns must be conducted with the dealer from where the product was purchased.	
Other terms and conditions may be applicable in specific countries, if stated by the dealer at the time of purchase.	
All Bowens products are certified by the CE mark. The CE certified mark is a declaration of conformity to the required EEC directives 89/336/EEC ‘Electromagnetic Compatibility’ and 73/23/EEC ‘Low Voltage Directive’.	
<div>CE</div>	

introduction

Thank you for choosing the Streamlite from Bowens. The Streamlite has been designed by working closely with photographers to develop a continuous light source that meets the high-quality standards required in todays professional studios.

In order to obtain the full benefit from your purchase, please take a few moments to familiarise yourself with this user manual.

For more information on all Bowens products and to find details of your nearest Bowens dealer, please visit the Bowens website.

www.bowens.co.uk

safety notes

always...

- Switch power off and disconnect from the power supply before changing a lamp or fitting removing accessories.
- Disconnect the power supply before changing the fuse. Never replace with a fuse of a different rating. A spare fuse is fitted in the fuse holder under the AC inlet (see pages 4-5).
- Exercise care when handling equipment that has been in use.
- Avoid placing cables where they can be tripped over. Protect from heavy, sharp or hot objects, which may cause damage & replace damaged cables immediately.

never...

- Always remove the power cord by gripping the plug. NEVER pull the cord.
- Always ensure that any extension cord used has a suitable current rating to prevent overheating and never use coiled extension cords.
- Use the specified lamps. A fire hazard exists if lamps other than the ones specified are used.

- Use in an environment where moisture or flammable vapour is likely to come in contact with the unit.
- Restrict air vents while in use.
- Use a unit with damaged housing, mouldings or lamp. If the unit is dropped or damaged in any way, always have it checked before using.
- Use any equipment with a damaged mains cable.
- Operate the unit without a safe grounded AC supply.

Streamlite 330

Specifications:

Maximum Power	90W (3 x 30W)	
Lamps	230V	30W E27 5600K BW-3457
	117V	30W E27 5600K BW-3458
Supply Voltage	230V	220-240V 50/60Hz
	117V	110-130V 50/60Hz
Dimensions	414mmØ x 325mm inc reflector	
	16½"Ø x 12¾" inc reflector	
Weight	1.95Kg (4.2lbs) inc reflector	

Part Codes:

	117V	230V
Streamlite 330	BW-3455	BW-3450
Streamlite 330 kit	BW-3475	BW-3470
Streamlite 330 diffuser	BW-3456	BW-3456

30W spiral lamp

Reflector

Carry handle

AC power input

On/Off switch

Adjustable stand
bracket



Streamlite 530

Specifications:

Maximum Power	150W (5 x 30W)	
Lamps	230V	30W E27 5600K BW-3457
	117V	30W E27 5600K BW-3458
Supply Voltage	230V	220-240V 50/60Hz
	117V	110-130V 50/60Hz
Dimensions	460mmØ x 335mm inc reflector	
	18½"Ø x 13½" inc reflector	
Weight	2.8Kg (6.17lbs) inc reflector	

Part Codes:

	117V	230V
Streamlite 530	BW-3465	BW-3460
Streamlite 530 diffuser	BW-3466	BW-3466

30W spiral lamp

Reflector

Carry handle

Lamp On/Off
switch

AC power input

Power On/Off
switch

Adjustable stand
bracket



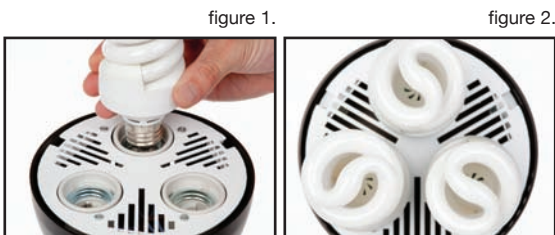
Operation

General Operation

- Always use the cable supplied from your Bowens dealer to connect the unit to the mains power supply.
- It is recommended to switch on the Streamlite a few minutes before you start shooting as the light output will improve after the lamps have been switched on for a short period.
- When operating the Streamlite angled down more than 45° below horizontal, heat build up can shorten the lamp life. If used this way limit use to around 1 hour then switch off and allow to cool before recommencing operation.

Replacing Lamps

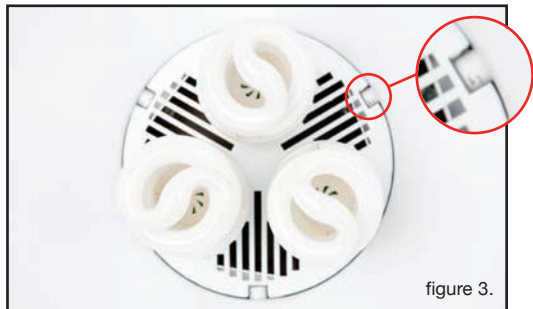
- Switch OFF the power and disconnect from the mains supply before removing / replacing any lamps.
- Remove the reflector.
- While holding the lamp by the base, gently screw the lamp into the lamp holder (as shown in figure 1).
- Repeat previous step until all lamps are positioned into the lamp holders (figure 2).



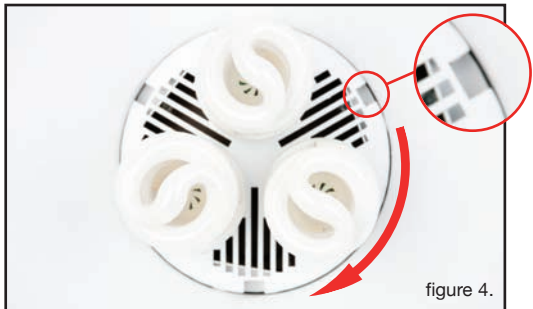
Note: It is recommended that only lamps purchased under a Bowens 'BW' stock code number are used as replacements. The manufacturer will not accept liability for the use of any other lamps.

Attaching Reflector

- Position the spigots on the reflector into the slots on the Streamlite (figure 3).



- Gently turn the reflector clockwise until locked into place (figure 4).



Operation

Attaching Diffuser

- Place the diffuser over one side of the reflector, as shown below.



- Stretch the elasticated diffuser over the reflector until appears as shown.



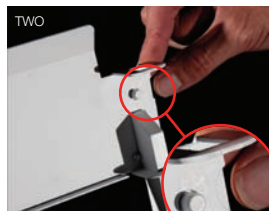
Cocoon & Cocoon Stand Assembly

Cocoon Stand Assembly

StepONE - Place the two leg sections on the floor with the legs fully extended.



StepTWO - Attach one of the Cocoon Supports. Use the studs on either side of the support to lock in place with the leg sections.



StepTHREE - Once the studs are locked in place the first support should appear as shown.



StepFOUR - Attach both supports to the legs. Your assembled Cocoon Stand should appear as shown opposite.



Cocoon Assembly

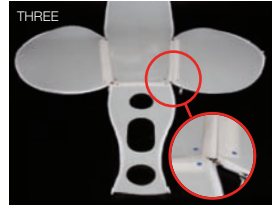
StepONE - Place the central translucent panel onto the floor with the red and blue coloured dots facing upwards.



StepTWO - Fasten the two side panels using the attached velcro. Ensure coloured dots on each panel line up to the correct sides.



StepTHREE - Attach the final panel as shown. Make sure all coloured dots are correctly placed.



StepFOUR - Finally, zip all of the panels together. Your assembled Cocoon should appear as shown.

