

Catalogue

1. Product Introduction-----	3
2. Package Contents-----	3
3. Features-----	3
4. Specifications-----	4
5. Controls and Slots -----	5
6. Setting up the digital picture frame -----	5
7. Remote Control-----	6
8. Playing a MP3 as Background to a Slideshow-----	7
9. Replacing Remote Control Battery-----	7

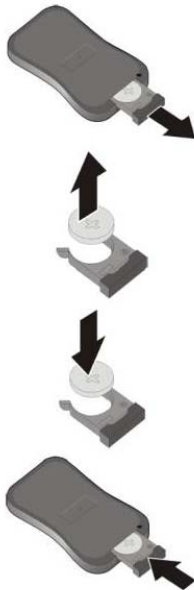
8. Playing a MP3 as Background to a Slideshow

- A. First press “Music” key to enter the music database. Use the arrow keys to select the desired music file.
- B. Press “Slideshow” key. This will play the selected MP3 while playing the slideshow.

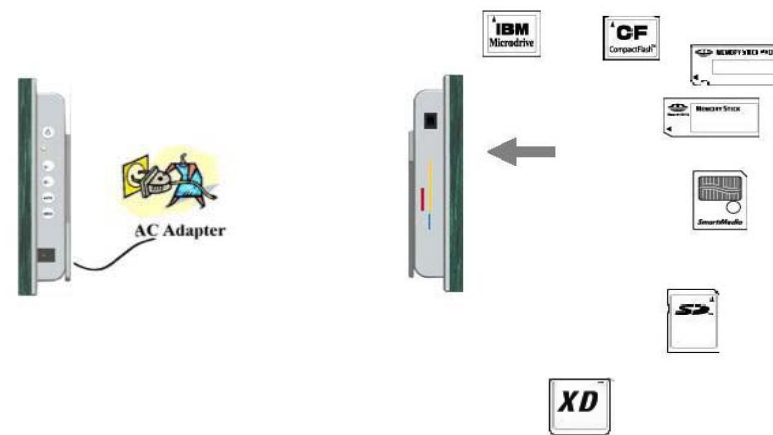
9. Replacing Remote Control Battery

Replacing the Remote Control Battery

- 1**—Remove the battery compartment cover by pulling the cover in the direction of the arrow.
- 2**—Remove the battery.
- 3**—Insert the replacement battery taking note of the correct polariton (+/-).
- 4**—Replace the cover.



**Caution:**  
1.Only use a 3V CR2025 battery.  
2.Dispose of used batteries according to local ordinance regulations.  
3.Remove the battery when not using the Flash Player for prolonged periods.



## 7.Remote Control:

The following table briefly describes the remote control functions.

BUTTON	DESCRIPTION
POWER	Turn it on or off
SETUP	Open menu for changing settings
DISPLAY	Display file information of selected file
CARD SELECTION	Choose a different memory card
MUSIC	Go to and display music files
PHOTO	Go to and display photo files
MOVIE	Go to and display movie files
FILE	Go to file library (all files)
ROTATE	Rotate photo 90 degrees clockwise on screen
ZOOM	Zoom x 4 (photos only)
REPEAT	Play file repeatedly until stopped
SLIDESHOW	Start/stop photo slideshow
REW	Rewind movies
FF	Forward movies
PREV	Go to previous file
NEXT	Go to next file
+ (VOLUME)	Raise volume
- (VOLUME)	Lower volume
MUTE	Mute volume
EFFECT	Change slideshow effects
↑	Move up when selecting on your TV screen
SLIDE INTERVAL	Change slideshow delay: 1; 3; 5; 10 seconds
←	Move left when selecting on the screen
PLAY/PAUSE	Play/pause, confirm selections on the screen
→	Move right when selecting on the screen
↓	Move down when selecting on the screen
STOP	Stop the selected file/action



## 1. Product Introduction:

Congratulations! You are the proud owner of the digital picture frame. Boasting high-quality image resolution the digital picture frame is the perfect product for displaying your favorite MP3's. Because the digital picture frame has a changeable decorative frame, you can be configured to display pictures in a slide show or as a still picture. With its ease of use and configuration, you can now display all your favorite pictures or video files for everyone to see!

## 2. Package Contents:

Before using the digital picture frame, be sure to check all the accessories contained in the package. the digital picture frame comes with the following items:

- Digital picture frame unit
- Decorative Changeable Frame
- AC adapter
- Remote Control
- User Manual

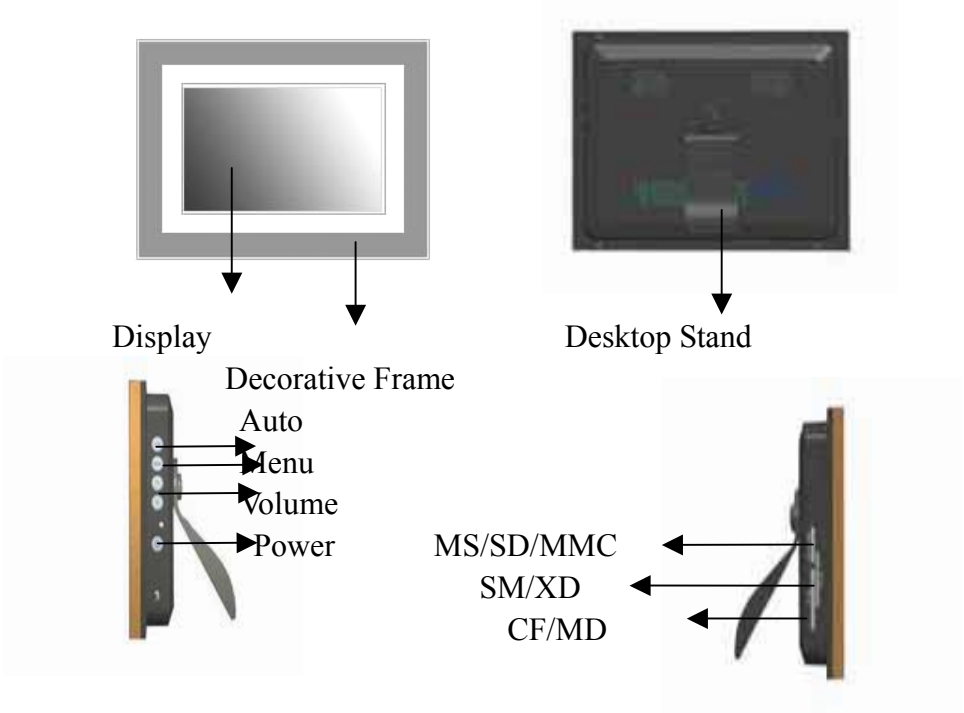
## 3. Features

- Display pictures and videos without a computer
- Listen to MP3 audio while displaying photos
- Simple operation, insert the compact card into the picture frame to view the pictures, video, or listen to MP3's
- Support: CF/MD—MS/SD/MMC—SM/XD
- TFT-LCD with high resolution, wide view angle and rich color
- Easy to use remote control for displaying and managing your files
- Built-in stereo speakers
- The frame is changeable, various decorative frame in style and color for your selection

4. Specifications

Type	DPF8K
Unit Size	8.5”(H) x 10.5”(W) x 2”(D)
Display Area	162.2(H) x 121.7(V)
Resolution	640*480
Colors	262,144
Brightness	250cd/m² max.
Contrast angle	250:1
Viewing angle	65/65 (l/r), 45/30 (u/d)
Input voltage	AC110—240V(50HZ—60HZ)
Power	VESA DPMS
Working Temperature	0℃---50℃
Unit Weight	2.2KG
Media	MPEG1/MPEG2/MPEG4, MP3/JPEG
Card	CF / MD / SD / MMC / SM / XD/MS
Auto Start Mode	Auto Slide Show JPEG
Photo Playback Mode	1. Loop, Zoom In 2. Auto Slide Show 3. Slide Show with background MP3 music 4. File name, File size, Resolution, Date Display 5. Interval Time Setup 6. Transition Setup 7. Play/Stop/Pause
Music Playback Mode	1. Play/Stop/Pause 2. Volume Adjust 3. Mute Function 4. Repeat Model Setup 5. File Type, Total Time, Date, Display
Video Playback Mode	1. Play/Stop/Pause 2. Volume Adjust 3. Mute Function 4. Zoom in 5. File information, Time and date Display
Accessories	1. Remote Controller 2. AC Adapter 3. Operation manual

5.Controls and Slots



6. Setting up the digital picture frame

- A. Open the package and remove the protective foam. Remove the protective sleeve from the unit.
- B. Plug in the AC adapter into power outlet. Plug the other end into the unit.
- C. After the content is stored on the target flash media, insert the media into the proper slot.
- D. Turn power to on position via the On/Off switch. The power switch is on the right side of the digital picture frame.
- E. As default, the first file in the card will be displayed first. The play sequence is automatically sorted by the file name alphabetically, regardless of file type. Therefore, a MP3 could be played first, followed by a second MP3 or an image, or a video.