

Acer TravelMate X313

Quick Guide

Product registration

When using your product for the first time, it is recommended that you immediately register it. This will give you access to some useful benefits, such as:

- Faster service from our trained representatives.
- Membership in the Acer community: receive promotions and participate in customer surveys.
- The latest news from Acer.

Hurry and register, as other advantages await you!

How to register

To register your Acer product, please visit **www.acer.com**. Select your country, click **PRODUCT REGISTRATION** and follow the simple instructions.

You will also be asked to register your product during the setup process, or you can double-click the Registration icon on the desktop.

After we receive your product registration, you will be sent a confirmation email with important data that you should keep in a safe place.

Obtaining Acer accessories

We are happy to inform you that Acer's warranty extension program and Notebook accessories are available online. Come and visit our online shop and find what you need at **store.acer.com**.

The Acer store is being progressively rolled out, and, unfortunately may not be available in some regions. Please check back regularly to see when it will be available in your country.

© 06/2013. All Rights Reserved.
Acer TravelMate X313
Quick Guide
This revision: 3 June 2013

Model number:
Serial number:
Date of purchase:
Place of purchase:

Table of contents

Product registration	1
How to register	1
Obtaining Acer accessories	1
Your guides	4
Computer	5
Front view	5
Back view	6
Top view	6
Bottom view	6
Left/right views	7
LED Indicators	8
Environment	8
Keyboard cover (optional)	9
Keyboard front view	9
Hotkeys	10
Inserting the computer into the keyboard cover	10
Removing the computer from the keyboard cover	12
Using the keyboard	13
Pairing with the X313	13
Charging the keyboard	13
Troubleshooting	14
Cradle (optional)	14
Front view	15
Back view (stand not shown)	16
Left view (stand not shown)	17
Connecting the computer to the cradle	18

First things first

We would like to thank you for making an Acer notebook your choice for meeting your mobile computing needs.

Your guides

To help you use your Acer notebook, we have designed a set of guides:

First off, the **Setup Poster** helps you get started with setting up your computer.

The **Quick Guide** introduces you to the basic features and functions of your new computer.

For more on how your computer can help you to be more productive, please refer to the **User's Manual**. The **User's Manual** contains useful information applying to your new computer. It covers basic topics such as using the keyboard and audio, etc.

This guide contains detailed information on such subjects as system utilities, data recovery, expansion options and troubleshooting. In addition it contains warranty information and the general regulations and safety notices for your notebook.

Follow these steps to access it:

- 1 Type 'User' from *Start*.
- 2 Click on **Acer User's Manual**.

Your Acer computer tour

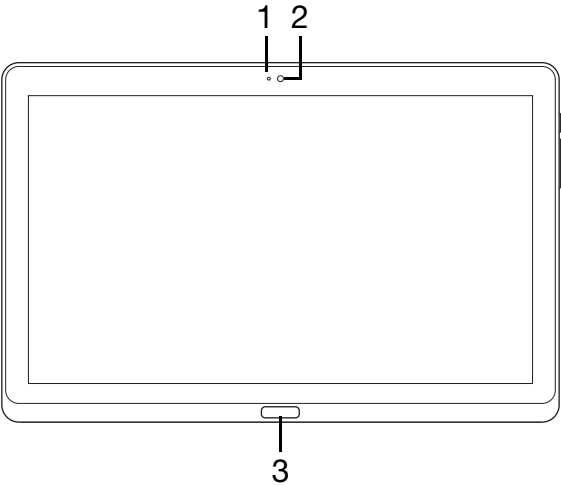
After setting up your device as illustrated in the setup poster, let us show you around your new Acer computer.

You can enter information into you new computer via the touchscreen.

Computer

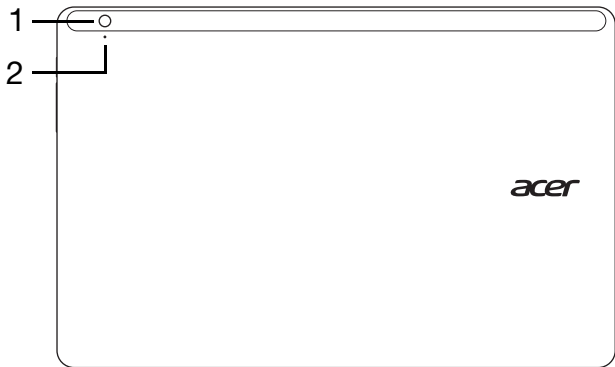
Your computer has two optional components: a keyboard cover and cradle. The following set of images will show you the computer and the optional components. The views are labeled as if you are holding the computer with the screen towards you and the camera at the top.

Front view



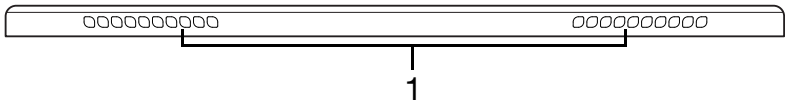
No.	Item	Description
1	Camera indicator light	Lights up when camera is active.
2	Webcam	Web camera for video communication.
3	Windows key	Press once to open the Start menu.

Back view



No.	Item	Description
1	Integrated webcam	Web camera for video communication.
2	Camera indicator light	Lights up when camera is active.

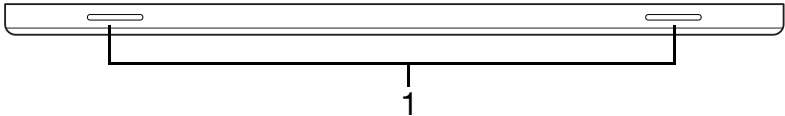
Top view



No.	Item	Description
1	Ventilation and cooling fan	Allows the computer to stay cool. <i>Do not cover or obstruct the openings.</i>

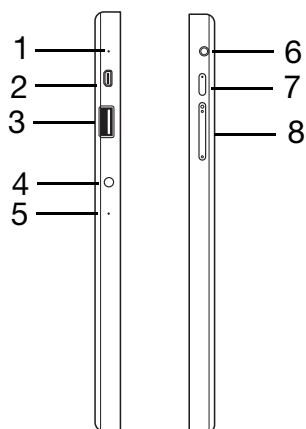
Note: Display orientation may be fixed when apps designed for a specific orientation are running. These include games and other full-screen apps. When making video calls, you should always hold the computer in landscape orientation.







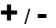
Bottom view



No.	Item	Description
1	Speakers	Delivers stereo audio output.

Left/right views



No.	Icon	Item	Description
1		Microphone	Internal microphone for sound recording.
2		micro HDMI port	Supports high-definition digital video connections.
3		USB 3.0 port	Connects to USB devices.
4		DC-in jack	Connects to an AC adapter.
5		Reset	Insert a paperclip into the hole and press for four seconds to reset the computer (simulates removing and reinstalling the battery).
6		Headset/speaker jack	Connects to audio devices (e.g., speakers, headphones) or a headset with microphone.
7		Power button	Press to turn the computer on; press again to place the computer in Sleep mode. Press and hold to turn the computer off.
		Battery LED	Indicates the computer's battery status. See table below.
8		Volume key	Press to increase or decrease volume.

Information on USB 3.0

- USB 3.0 compatible ports are blue.

- Compatible with USB 3.0 and earlier USB devices.
- For optimal performance, use USB 3.0-certified devices.
- Defined by the USB 3.0 (SuperSpeed USB) specification.

LED Indicators

LED color	State	Description
Blue	Steady	The computer is fully charged and plugged in.
Blue	On briefly	The computer is fully charged and running on battery power. After pressing the power button, the blue LED stays lit for a few seconds before turning off.
Amber	Steady	The computer is charging and plugged in.
Amber	On briefly	The computer is not fully charged and running on battery power. After pressing the power button, the amber LED stays lit for a few seconds before turning off.
Amber	Blinking	The battery is critically low or abnormal battery situation.
Off		The computer is off.

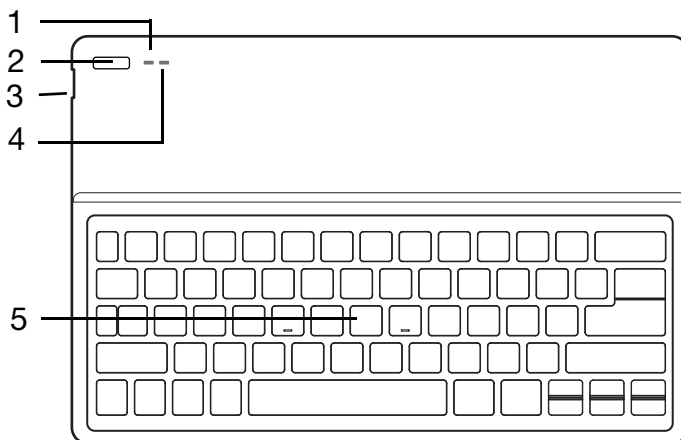
Environment



- Temperature:
 - Operating: 5 °C to 35 °C
 - Non-operating: -20 °C to 65 °C
- Humidity (non-condensing):
 - Operating: 20% to 80%
 - Non-operating: 20% to 80%

Keyboard cover (optional)

The following section describes the bundled keyboard cover.

Keyboard front view



No.	Icon	Item	Description
1		Battery LED	Indicates the keyboard's battery status (see table below).
2		Power button	Turns the keyboard on and off.
3		USB connector	Use the provided USB charging cable to charge the keyboard's embedded battery. See "Inserting the computer into the keyboard cover" on page 10.
4		Function LED	Indicates the keyboard's function status (see table below).
5		Keyboard	For entering data into your computer.

Battery LED

State	Description
Blue (solid)	The keyboard is plugged in and fully charged.
Orange (solid)	The keyboard is plugged in and charging.
Orange (blinking slowly)	The keyboard is not plugged in and the battery is low.
Orange (blinking quickly)	The keyboard is not plugged in and the battery is critically low or there is an abnormal state.
Orange (blinking)	The keyboard is in pairing mode (the function LED also blinks).

Function LED

State	Description
Blue (solid)	The LED turns solid blue for five seconds after turning the keyboard on.
Blue (blinking)	The LED blinks after turning the keyboard off.
Blue (blinking)	The keyboard is in pairing mode (the battery LED also blinks).

Hotkeys

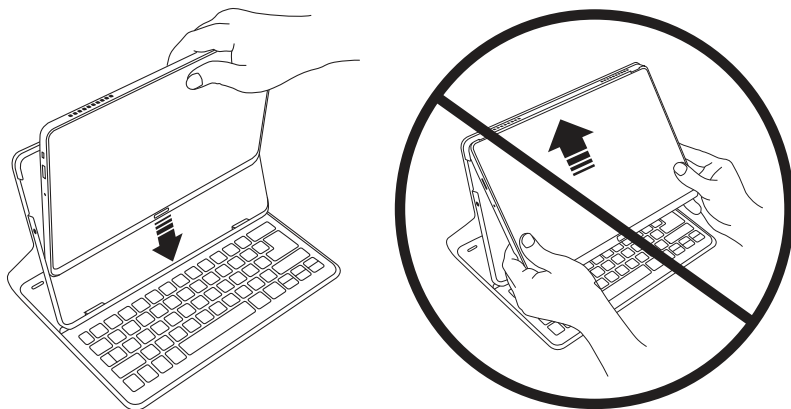
The computer employs hotkeys or key combinations to access most of the computer's controls like settings and volume output. To activate hotkeys, press and hold the **<Fn>** key before pressing the other key in the hotkey combination.

Inserting the computer into the keyboard cover

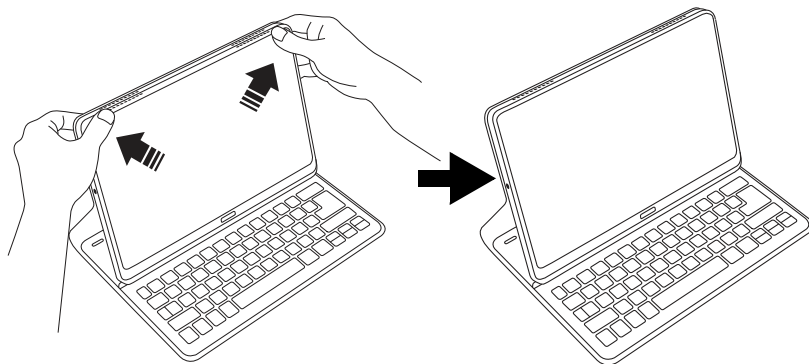
Note: Always use caution when using and transporting the keyboard cover. Acer recommends using two hands when holding the keyboard case.

1. Place the holder into the keyboard's channel to put the holder in position.

2. Place the bottom part of the computer into the holder's bottom section. To avoid possible scratching and damage, do not insert the computer into the top section first.



3. Lean the tablet back into the holder and press the tablet's top edges to ensure the holder's tabs secure it in place. The computer is now secure in the keyboard cover.

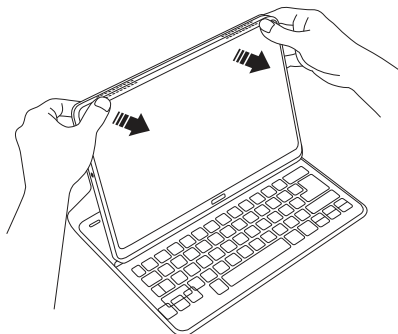


Note: To avoid possible damage, do not carry the holder with the computer facing outside.

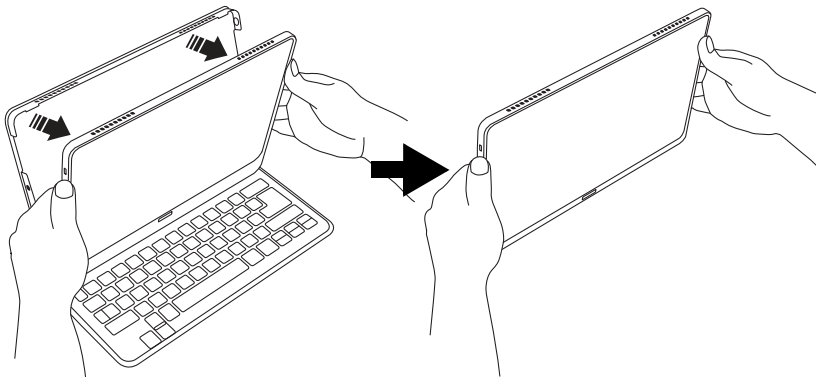


Removing the computer from the keyboard cover

1. Press the holder's tabs located on the top of the holder.



2. Pull the computer away from the holder.



Using the keyboard

Your Bluetooth keyboard comes pre-paired with the X313. You only need to turn on the keyboard and the X313 Bluetooth function by doing the following:

1. Tap the **Settings** charm > **Change PC settings** > **Wireless**.
2. Under Wireless devices, ensure the Bluetooth switch is set to **On**.
3. Press and hold the keyboard's **Power** button until the function LED comes on (the function LED will turn on for 5 seconds and then turn off).
4. To turn off the keyboard, press and hold the keyboard's **Power** button until the function LED blinks. Release the Power button.

Note: To save power, turn the keyboard off when not in use.

Pairing with the X313

If your Bluetooth keyboard loses connection with the X313, you will need to pair again. After the pairing process is complete, you're able to turn your keyboard off and on again without having to pair again.

1. Tap the **Settings** charm > **Change PC settings** > **Devices**
2. Tap the **Acer Keyboard Cover** option and then tap the minus sign to the right to remove the device (it may take a moment for the keyboard to be removed from the device list.)

Note: The name of the keyboard may vary.

3. Press and hold the **Power button** until both the battery and the function LEDs blink repeatedly. Release the **Power** button. The keyboard is now in pairing mode.

Note: The keyboard stays in pairing mode for three minutes.

4. Tap **Add a device**. The X313 searches for any available Bluetooth devices to pair with.
5. Once it finds the **Acer Keyboard Cover**, tap it.

Note: The name of the keyboard may vary.

6. The screen now displays a six-digit passcode. Using the keyboard, enter the passcode and press **Enter**.

Note: The passcode is only valid for one minute. If the passcode disappears or if you enter a wrong passcode, repeat the steps above to pair.

7. Once pairing is complete, the function LED will stop blinking.

Charging the keyboard

The keyboard cover comes with an embedded battery and a USB charging cable. The cable's large end connects to the tablet's USB port and the small end connects to the keyboard's micro USB port. When the battery LED quickly blinks orange, the keyboard's battery is critically low and needs to be charged.

Keep the keyboard connected until the Battery LED is blue. You can still use the keyboard as normal while it is charging.

NOTE: *The tablet must be on for the keyboard to charge.*

Troubleshooting

Q: My keyboard doesn't do anything when I press the keys.

A: There could be several reasons for this. Check the following:

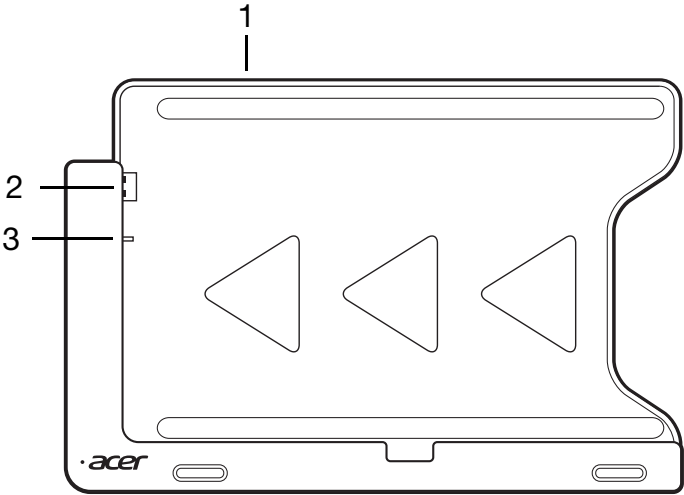
1. The keyboard may be turned off. Press and hold the keyboard's **Power button** until the function LED comes on (the function LED will turn on for 5 seconds and then turn off). If the function LED blinks, you have turned off the keyboard. Press and hold the keyboard's **Power button** again until the function LED comes on.
2. The keyboard may be out of charge. Follow the instructions in the "Charging your tablet" section.




Cradle (optional)

The following set of images show you the optional cradle.

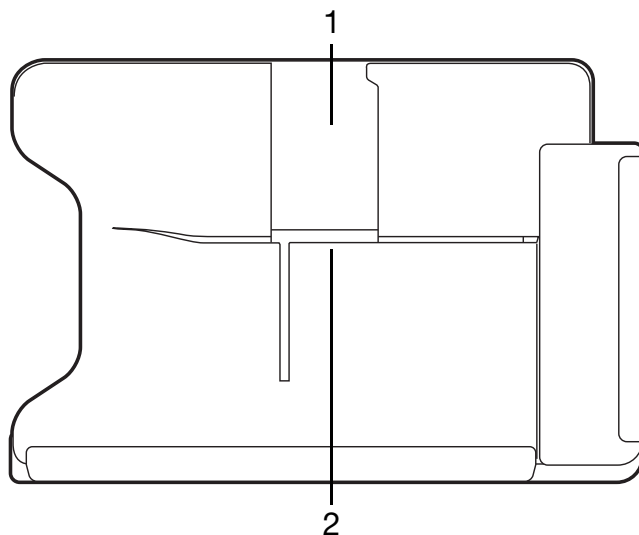
Note: *The cradle needs to be plugged into an AC power source.*

Front view



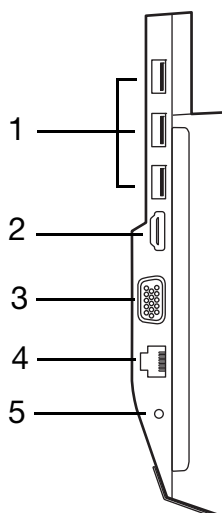
No.	Icon	Item	Description
1		Card reader	Accepts one Secure Digital (SD) card. Note: Push to remove/install the card.
2		USB connector	Connects to the computer's USB port.
3		DC-out jack	Provides power from the cradle to the computer.






Back view (stand not shown)



No.	Item	Description
1	Portrait view slot	Insert the stand here to rest the computer in portrait view.
2	Landscape view slot	Insert the stand here to rest the computer in landscape view.

Left view (stand not shown)



No.	Icon	Item	Description
1		USB 3.0 ports	Connect to USB devices. <i>To use the cradle's USB ports, you must plug in the power adapter.</i>
2		HDMI port	Supports high-definition digital video connections.
3		External display (VGA) port	Connects to a display device (e.g., external monitor, LCD projector).
4		Ethernet (RJ-45) port	Connects to an Ethernet 10/100-based network.
5		DC-in jack	Provides power to the cradle.

Information on USB 3.0

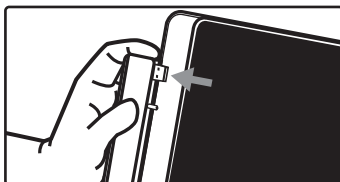
- USB 3.0 compatible ports are blue.
- Compatible with USB 3.0 and earlier USB devices.
- For optimal performance, use USB 3.0-certified devices.
- Defined by the USB 3.0 (SuperSpeed USB) specification.

Connecting the computer to the cradle

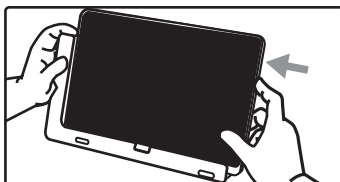
This multi-position cradle makes it simple to dock your computer because you don't have to worry about aligning ports and connectors or placing the computer at the correct angle.

To insert the computer into the cradle, do the following:

1. Place the cradle in landscape view. Place the computer into the cradle's channel with the Windows key at the bottom. The cradle's USB connector and DC-out jack are now aligned with the computer's USB port and DC-in jack.

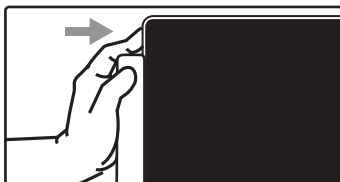


2. Slide the computer to the left until it stops (the cradle's USB connector and DC-out jack should NOT be visible).



To remove the computer from the cradle, do the following:

1. Place the cradle in landscape view. Hold the cradle with one hand and push the computer as shown.



2. Ensure the computer has cleared the cradle's USB connector and lift the computer out of the cradle.

