

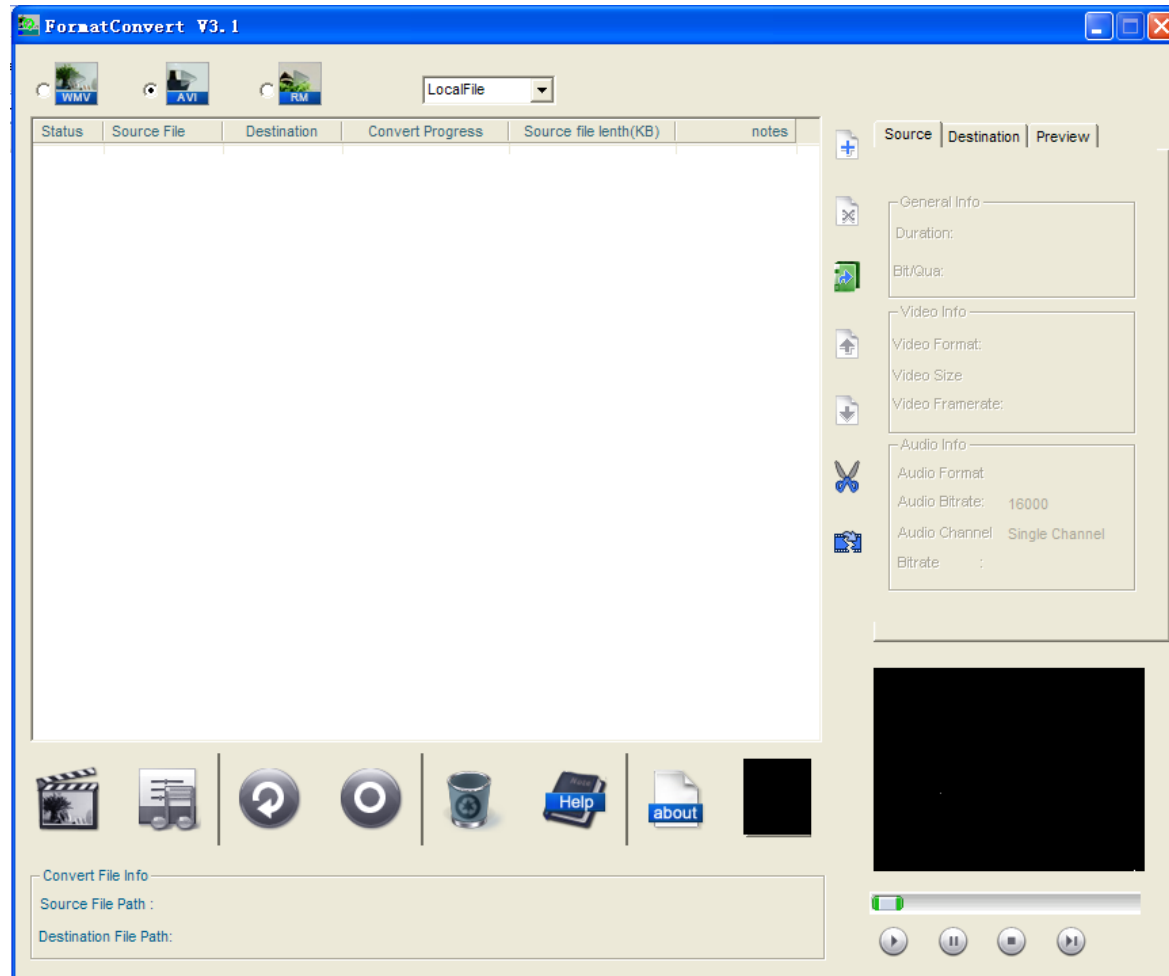
Format Convert Software User Manual
V3.1

Contents

Chapter 1 Software instruction	3
Welcome interface.....	3
Support format	3
Chapter 2 Uninstall	5
Uninstall.....	5
Chapter 3 Start operation	6
Start Operation	6
Format Select	6
Convert File Information	6
Preview Source Files	7
Convert Parameter Configuration	8
Add Folder	10
Add Single File(local file only).....	10
Start convert.....	11
Stop Convert	12
System Requirement.....	13
Chapter 4 Operation Instruction.....	14
Interface design	14
Format Select	14
Convert File List (Local file only)	15
Right Click Menu	16
Convert File List Editing Tools.....	16
CPU usage	17
Preview Display	17
Cut file (Only effective for local file).....	17
File merge (Local file only)	18
Chapter 5 Technology support.....	20
Technical Support	20
Contact us	20

Chapter 1 Software instruction

Welcome interface



Welcome to operate Format Convert 3.1, it supports file converting from .264 and .mp4 files to .wmv ,avi format or rm format.

Format Convert 3.1 also supports video/audio parameter settings, and can do video convert based on customer's configuration. We

sincerely hope that this Format Convert 3.1 software would help our customers in daily application requirements.

For more details about Format Convert 3.1, please kindly contact the technical supports. <http://www.hikvision.com>

Support format

•Support Source File Format:

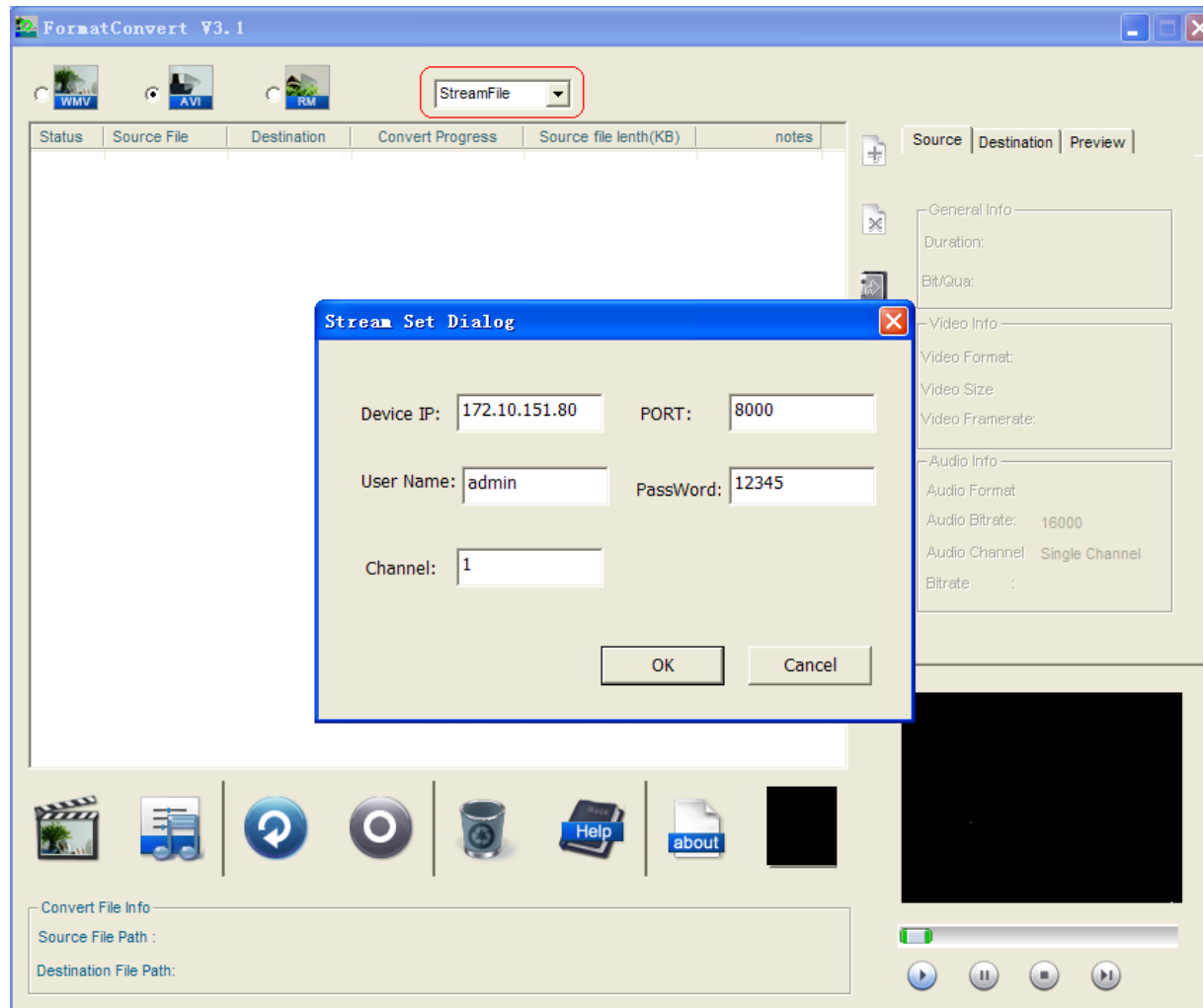
- .264 files

- .mp4 files

•Support Converted File Format:

- Local file

- Streamfile:



•Support destination file:

- WMV file (*.WMV) users can set the parameters of video size, frame rate, bit-rate and audio rate through WMV audio configuration window.
- AVI file (*.AVI), users can set the parameters of encoding format, frame rate, bit-rate and audio rate through AVI video/audio configuration window.
- RM file (*.RM), users can set the parameters of video size, frame rate, bit-rate and audio rate through RM audio configuration window.

For above format converting part, the default converting parameters are: video size is 352*288, frame rate is 25, bit-rate is 1000kbps, audio rate is 64Kbps, the AVI format default encoding format is XVID, video size is 352*288, frame rate is 25, bit-rate is 1000kbps, audio encoding format is 64kbps mp3

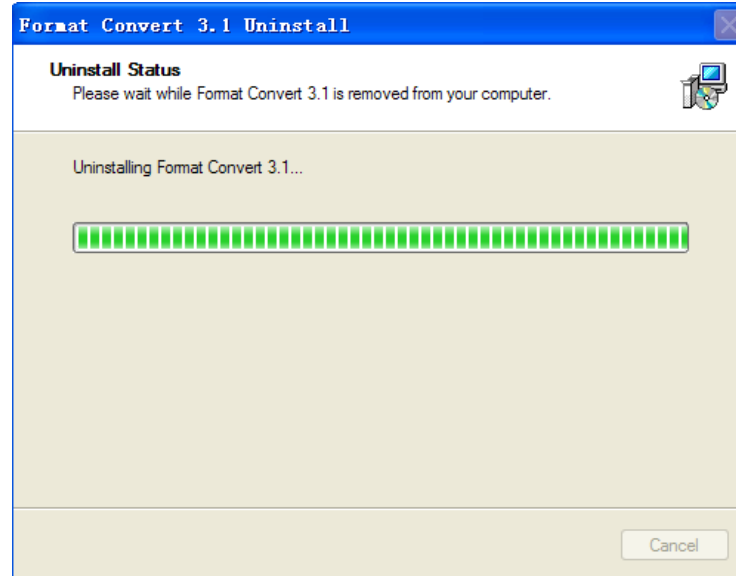
Chapter 2 Uninstall

Uninstall

As shown: select Uninstall Hik format convert:



Uninstall process is shown as below:



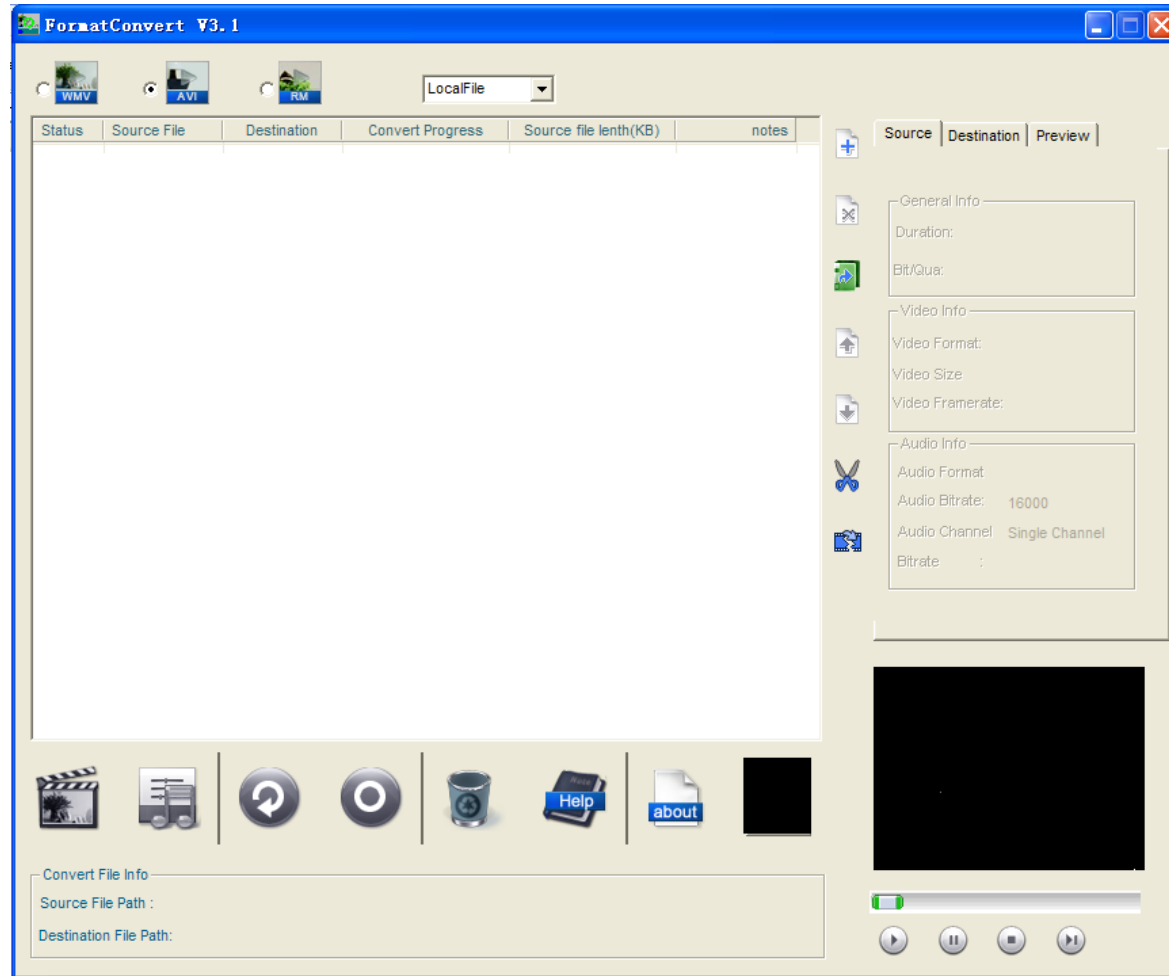
Uninstall completed:



Chapter 3 Start operation

Start Operation

After installation completed, users can start to use Format Convert 3.1 software, and the welcome interface will popup as below:



File type selection

•Local file



•Streamfile:



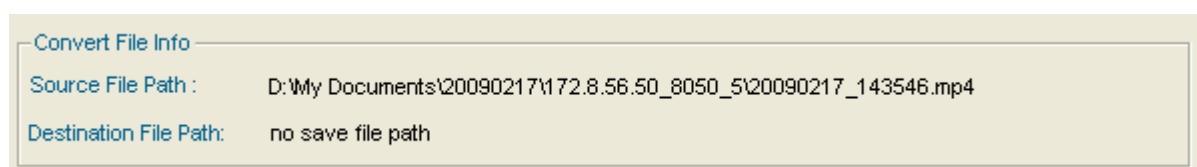
Format Select



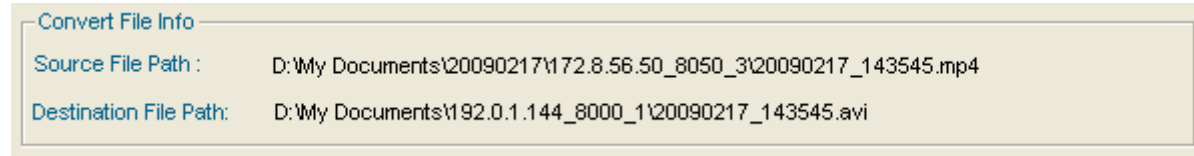
Users can select converted file format on software main interface, and the converted format will be .avi by default.

Convert File Information

On selecting certain file in the file list, relative information of the source file and converted file will be displayed in convert file information area. The information is shown as below if the destination file saving directory was not set:



The information is shown as below if the destination file saving directory was set:



Preview Source Files

File preview area is in the bottom right corner of software interface as shown below:



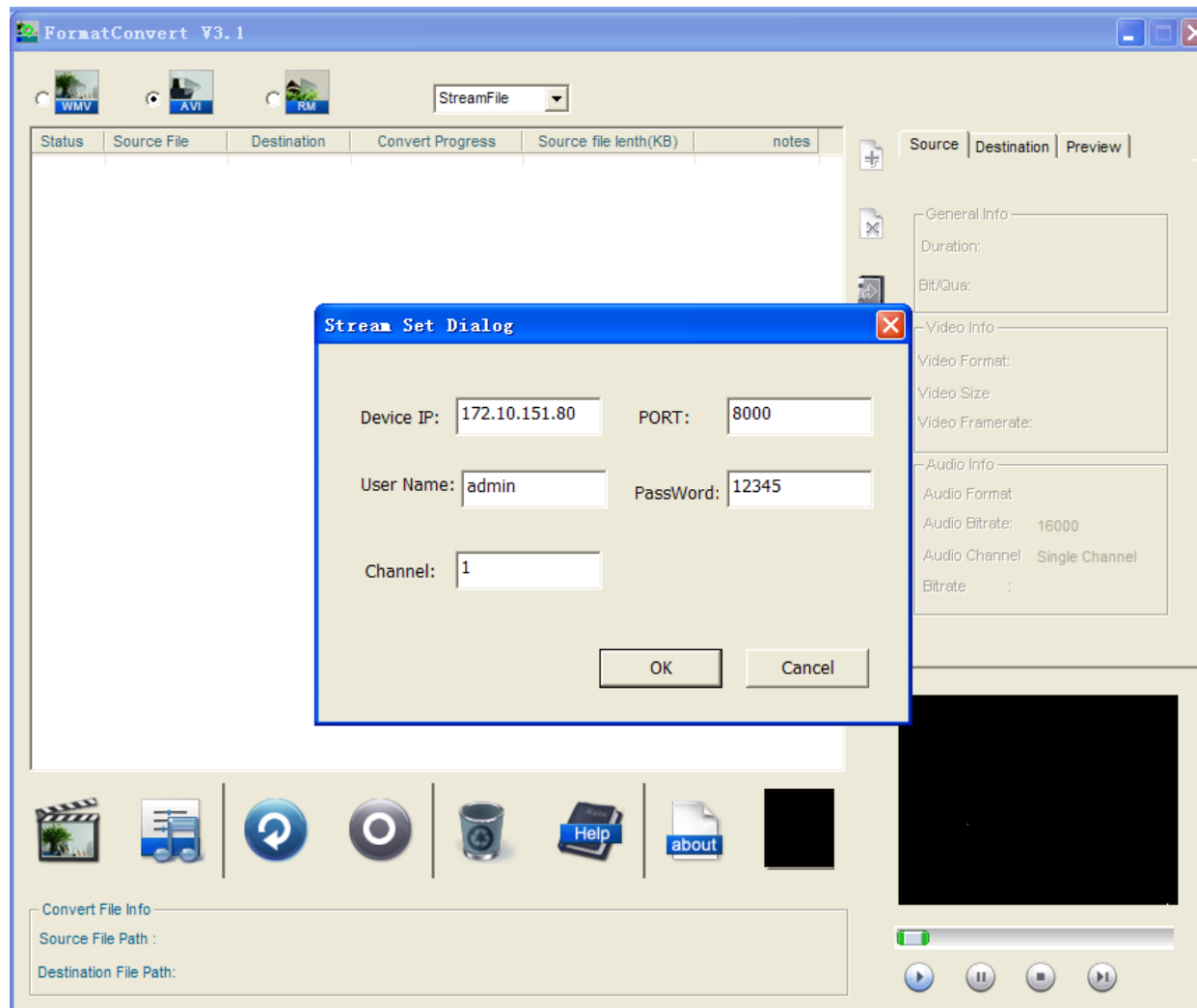
Select a file in file list and click  icon to start preview.


Note:

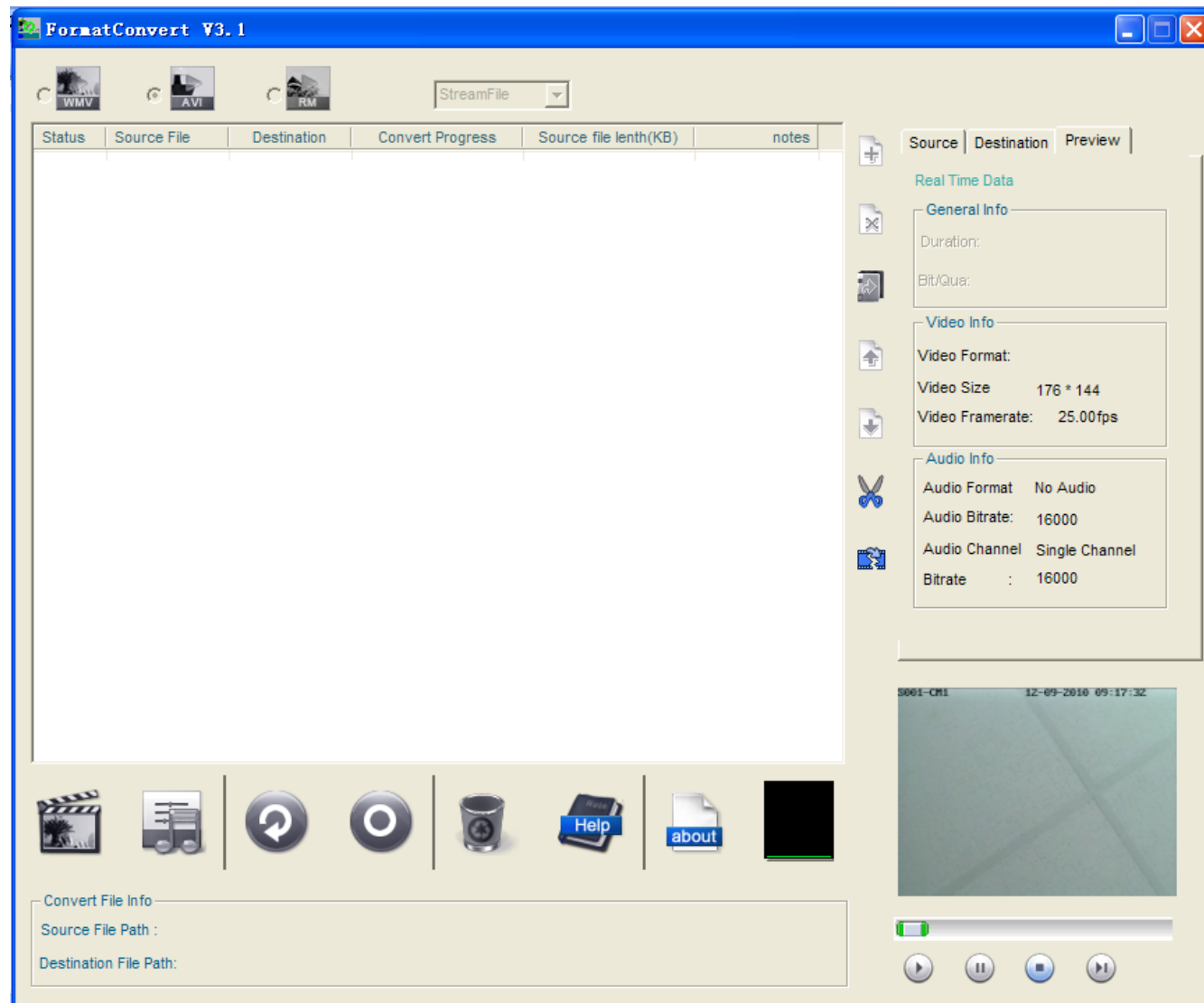
This function is only used for previewing source files, and cannot be used to preview converted result. For more information about preview display, please kindly refer to the operation guide of preview display.

•Streamfile preview

Set the network parameters and connect the network devices.

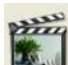



After set the network parameters, click ok, then click  button begins to preview streamfile; please check the network devices and parameters configuration if you can not preview it. The preview image is shown as:





Convert Parameter Configuration

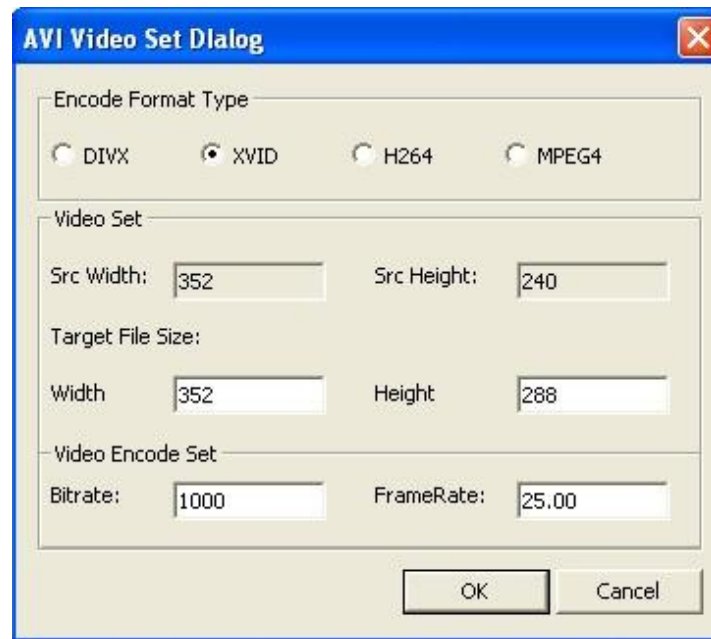
•WMV format:


Click  or  to set the audio-video parameters configuration, the default WMV parameters configuration is: video size is 352*288, frame rate is 25, bit-rate is 1000kbps, audio rate is 64Kbps, shown as:

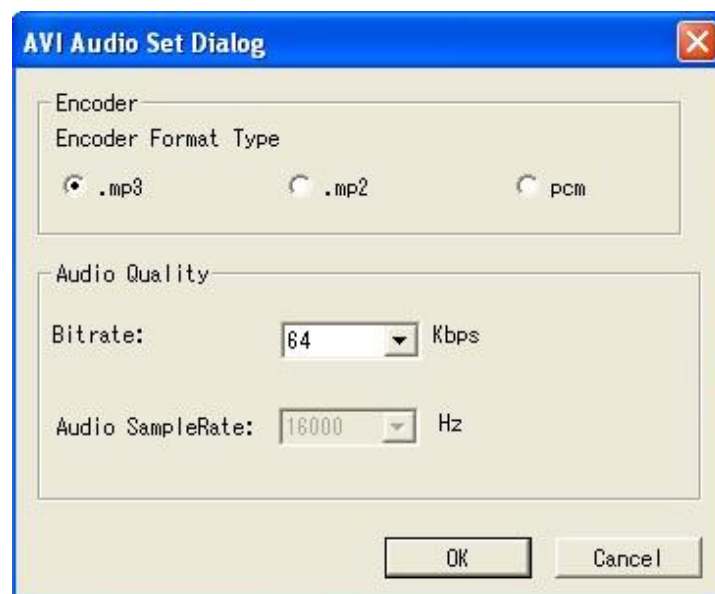


•AVI format:

Click  or  set the audio/video parameters configuration, the default AVI parameters configuration is: video size is 352*288, frame rate is 25, bit-rate is 1000kbps, audio rate is 64Kbps, shown as:





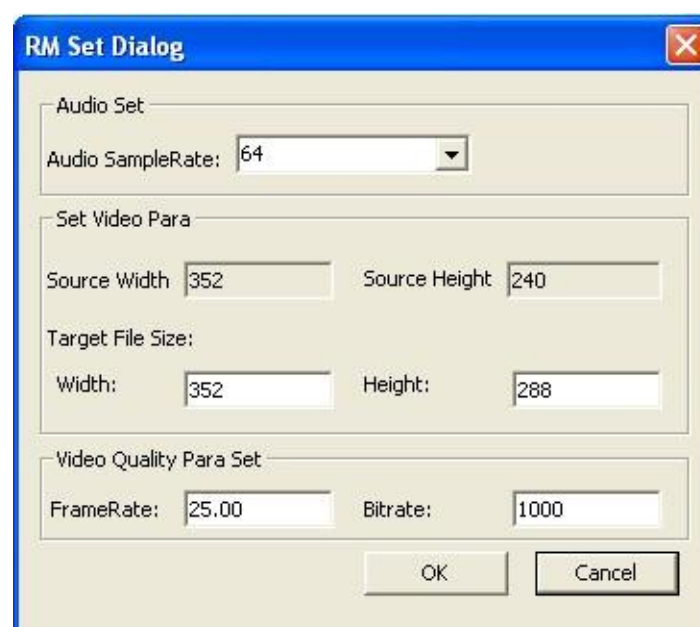
Click  to set AVI audio configuration parameters, it will popup a dialog box shown as:



Configuration completed, click ok, files will be converted by user-defined configuration..

•RM format:

Click  or  to set the audio-video parameters configuration, the default parameters configuration is : video size is 352*288, frame rate is 25, bit-rate is 1000kbps, audio rate is 64Kbps, shown as:




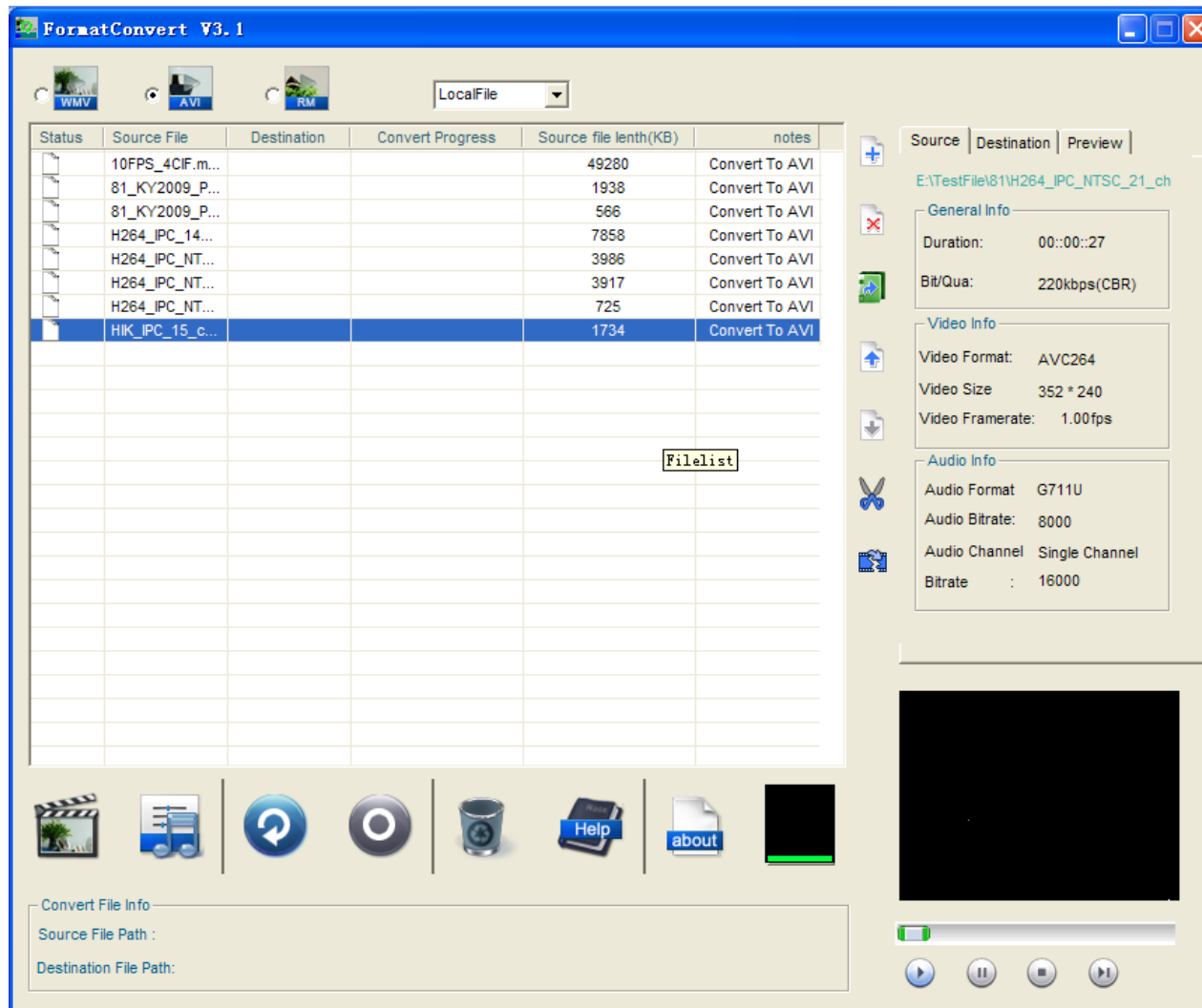
Configuration completed, click ok, files will be converted by user-defined configuration.
The parameters configuration operation of local file and streamfile are the same.

Note:

VLC is recommended to play RM format video.

Add Folder


Users can click icon  on software main interface, or right click on file list area and select "Add folder" to add folder into file list as below:



Please click and select a file if you want to check the referenced file information, and the source file information will be displayed on the file information area on the right side:




Add Single File(local file only)

Click icon  in software main interface, or right click on file list area, a menu will popup as below. Please kindly select "AddFile" and choose source file, the file name will be displayed on file list as below:

Status	Source File	Destination	Convert Progress	Source file lenth(KB)	
	20091010_134216...	20091010_134216.avi		545	Cor
	20091010_134219...	20091010_134219.avi		7968	Cor
	20091010_134301...	20091010_134301.avi		11855	Cor


- AddFile
- Add Folder
- Delete File
- Clear
- Move Up
- Move Down
- Video Set
- Audio Set
- StartConvert
- Preview
- Cut File
- Joint File

Start convert

Select a file type, if it is local file, users have to add audio-video files before starting format convert, then configure all relative parameters (the default WMV and RM parameters configuration is : video size is 352*288, frame rate is 25, bit-rate is 1000kbps, audio rate is 64Kbps, the AVI format default encoding format is XVID, video size is 352*288, frame rate is 25, bit-rate is 1000kbps, audio encoding format is 64kbps mp3), left click to choose a convert file (or it will choose the first file at list), click  icon on software main interface, or right click on file list and select "convert" to start converting, if the file save address is not set, it will popup a dialog box shown as below:



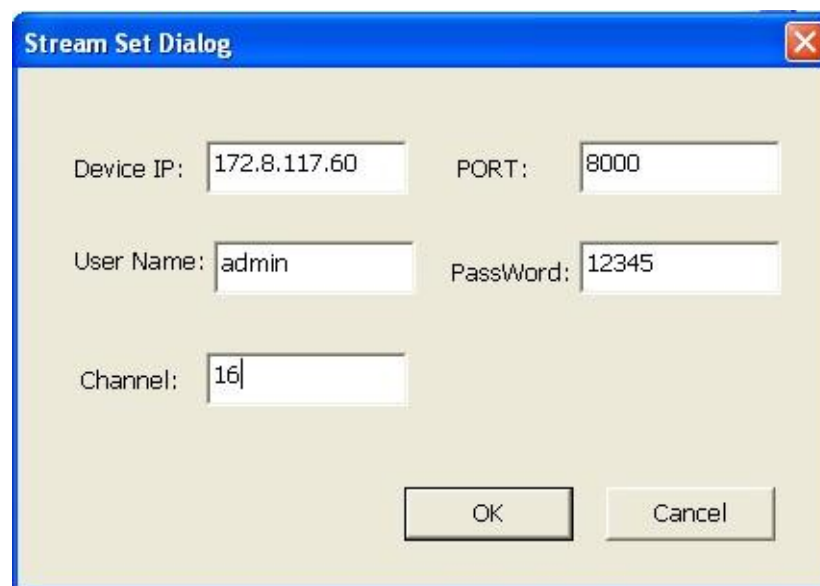
After determined the save address, it starts converting, please wait for it to complete:

Status	Source File	Destination	Convert Progress	Source file lenth(KB)	
	20091010_134216...	20091010_134216.avi		545	Cor
	20091010_134219...	20091010_134219.avi	3%	Converting	Cor
	20091010_134301...	20091010_134301.avi	100%	Convert Success	Cor



Users can view converting status on file list. If the converting process has been finished, then the converting status bar will turn into convert success message;

and the software will continue converting according to the file list order until all the files have been converted..

If the file type is real-time streamfile, users have to select streamfile first, the network parameters configuration dialog box is shown as below:



For example, we need .AVI file of channel 16, here enter „16” in channel item.

Then you can press  button to check whether the live stream can be transmitted or not, at this point, you can press „” icon to go to converting process.


File name after converting: destination file directory + device IP + ticktime + format suffix name;

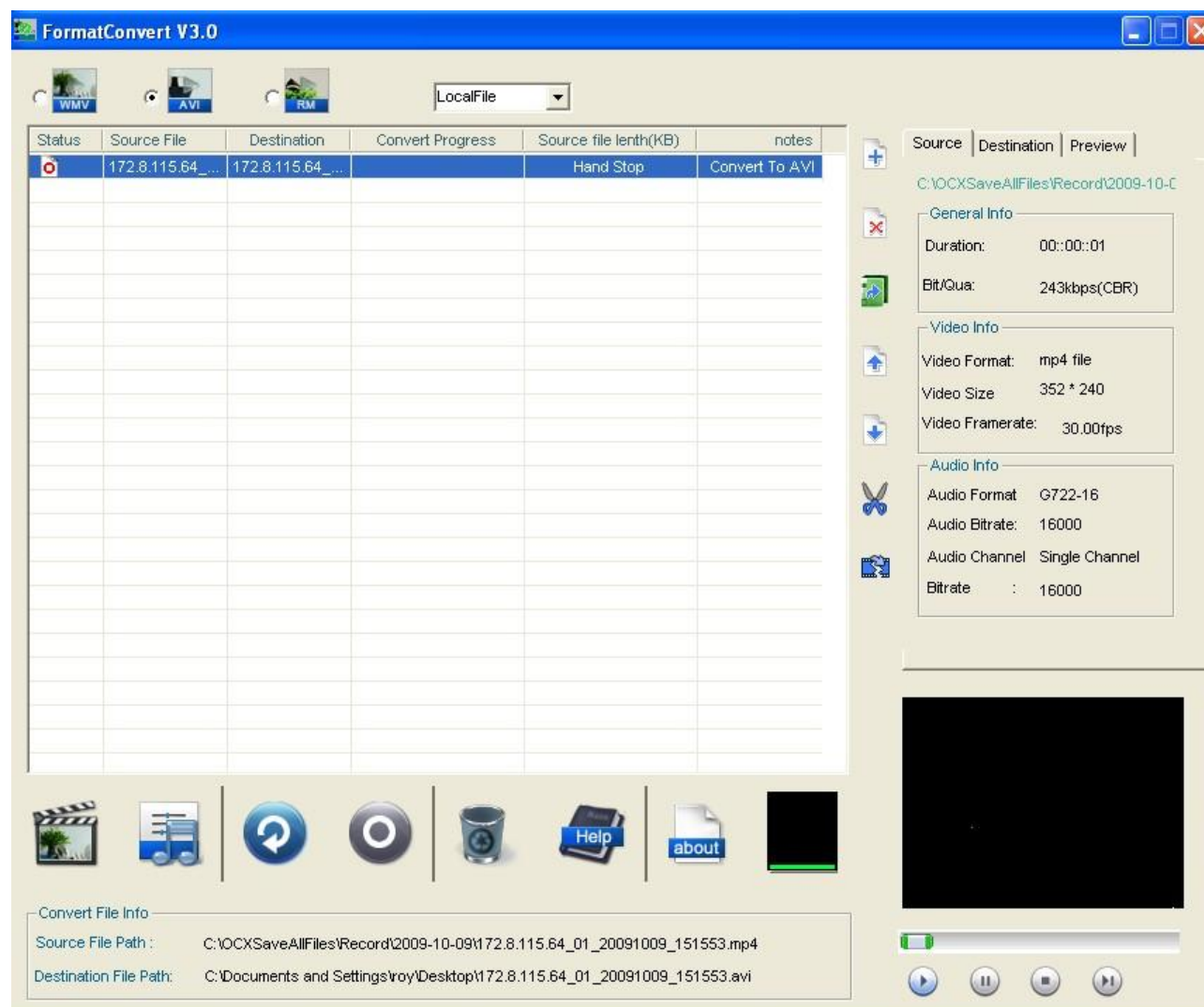
For example: converting an AVI format file which device IP is 192.0.0.63, and the destination file directory is F:\Test File, then it will create a file as: F:\Test File\192.0.0.63_1.avi;

Converting again after stop (the entire real-time stream file), the file name should be F:\Test File\192.0.0.63_2.avi, shown as below:

Note: When converting the real time stream, target file type could only be “Video Only”. If customer has requirement for other types, please contact us for the SDK.

Stop Convert

If users want to manually stop converting before file converting completed, please click  con on software main interface to stop current converting as below:

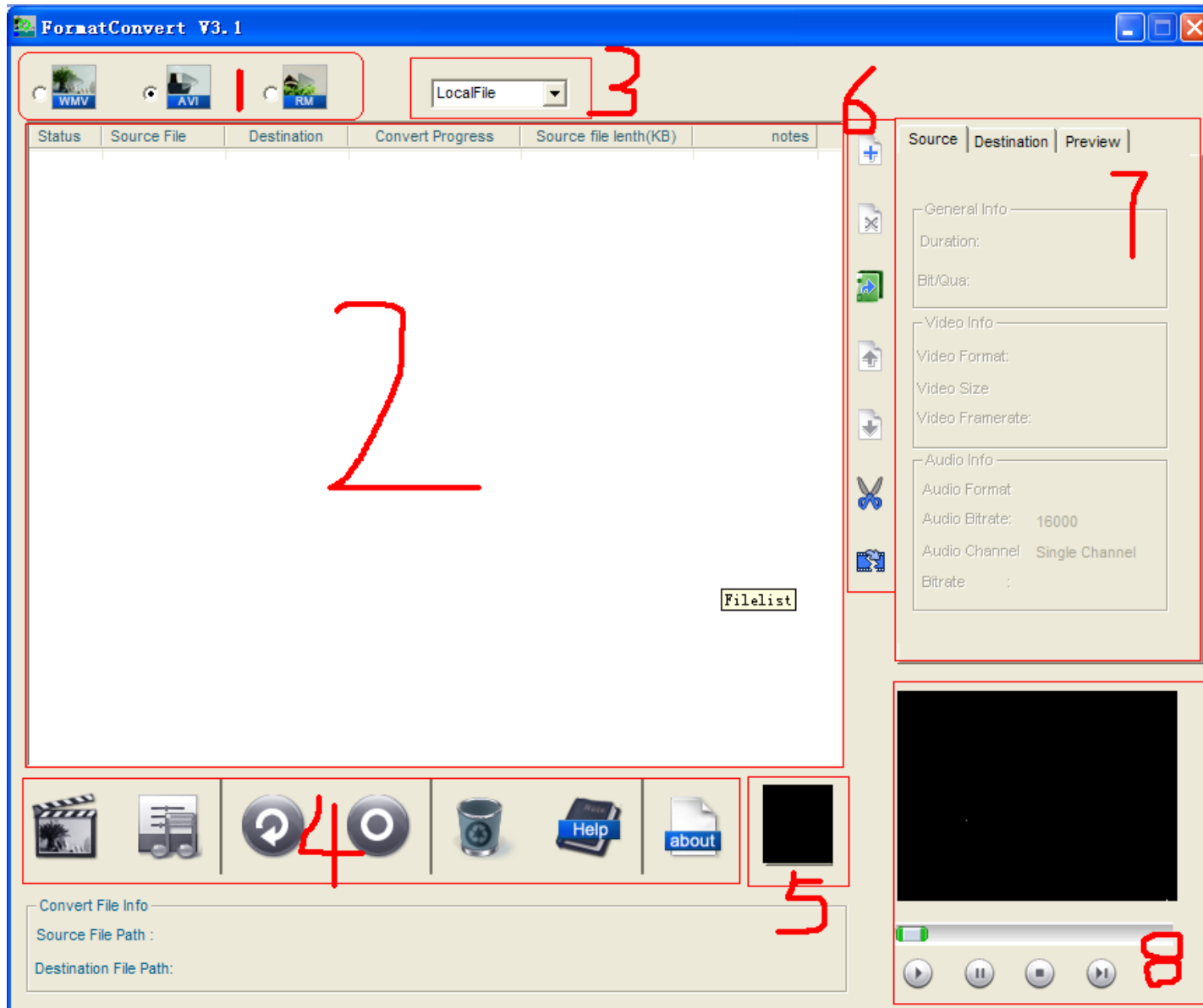


System Requirement

Support OS Version: Windows 2000/2003/XP

Chapter 4 Operation Instruction

Interface design



No.	Items	Function Description
1	Convert Format Select	For selecting convert file format.
2	Convert File List	Display files for converting and convert status.
3	Source File Type	Local file or live stream
4	Convert Tools Bar	This areas provides tools for video/audio configuration, start convert, stop convert, clear file list, software information and help document display.
5	CPU Usage	Users can view real time CPU usage in this area
6	File List Edit Tools	This area provides functions of add Files, delete Files, add Folder, delete Folder, move Files to Upper Level, move Files to Lower Level, file chip edit, files merge
7	File Properties	Users can browse source file information, converted file information, preview file information in this area.
8	Preview Player	play selected files or view live image

Format Select



Users can select converted file format on software main interface, and the converted format will be .wmv by default.



Click WMV option and the file will be converted to .wmv format.



Click AVI option and the file will be converted to .AVI format.;



Click RM option and the file will be converted to .RM format.

Convert File List (Local file only)

Status	Source File	Destination	Convert Prog...	Source file ...	notes
	20090217_143546.mp4	20090217_14...			Convert To AVI
	20090217_143545.mp4	20090217_14...			Convert To AVI
	20090217_143545.mp4	20090217_14...			Convert To AVI
	20090217_143545.mp4	20090217_14...			Convert To AVI
	20090217_143546.mp4	20090217_14...			Convert To AVI
	20090217_143546.mp4	20090217_14...			Convert To AVI
	20090217_143546.mp4	20090217_14...			Convert To AVI
	20081226_174229.mp4			289	Convert To AVI

File List Item Description

Status	Source File	Destination	Convert Prog...	Source file ...	notes
--------	-------------	-------------	-----------------	-----------------	-------

File List Items	Description
Status	Please kindly refer to the status table
Source File	Display source file name here
Destination	Display converted file name here(target file name = source file name + _output.(convert format))
Convert Process	Display current file converting process
Source File Length	Please kindly refer to the source file length table
Notes	Display converted file format

Status:

Icon	Description
	Added file
	File on converting
	File error
	Manual stop
	Convert complete

Source File length







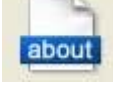
Icon	Display source file length before converting
	Display "converting" when file is on converting
	File on converting
	If there is converting error, it will be prompted
	If converting has been manually stopped, display icon as
	If converting completed, display "convert finished".

Right Click Menu








Users could find some basic operation options in right click menu when running Format Convert software. Right click on the file list area to open men..

Convert Tools



Icons	Items	Description
	Video Settings	If there is only single file in the file list, users can click this button to configure image size, format, bit rate and image quality.
	Audio Settings	If there is only single file in the file list, users can click this button to configure image size, format, bit rate and image quality.
	Start Convert	Click this icon to start format convert, and the software will run accoring to the file reference on the file list. Note: If users do not select converting files manually, the software will convert the first file on list by default.
	Stop Convert	Stop current converting process.
	Clear File List	Clear all files from the current file list.
	Help	Open the help document for Format Convert 3.1 software.
	About	Software information

Convert File List Editing Tools

Icons	Description	Notes
	Add file	Add files into file list.
	Delete file	Delete file from file list.
	Add folder the file	Include all the .mp4 and .264 files in folder.
	Move upward	Move the file upward on file list.
	Move downward	Move the file downward on file list.
	Edit video chip	Cut the selected files
	Merge files	Splicing the selected files

CPU usage







It can display current CPU usage.

Preview Display

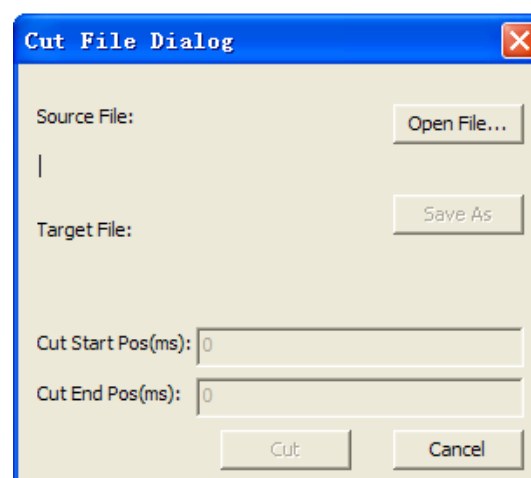
Users can preview selected files in the file list via preview display.

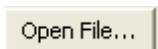
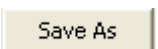


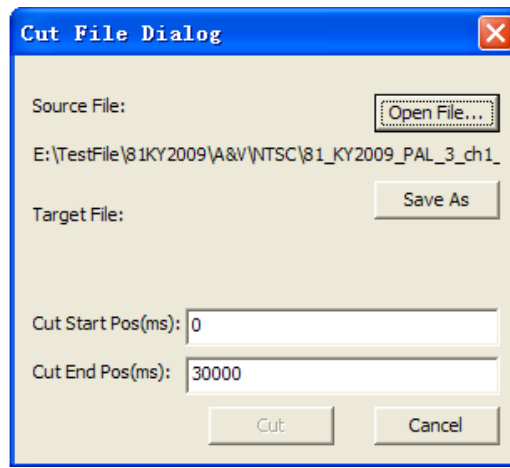
Icons	Description	Notes
	Preview display button	Start to play selected files
	Pause	Press this button to pause file preview(local file only)
	Stop	Press this button to stop file preview
	Next	Press this button to jump to next frame(local file only)

Cut file (Only effective for local file)

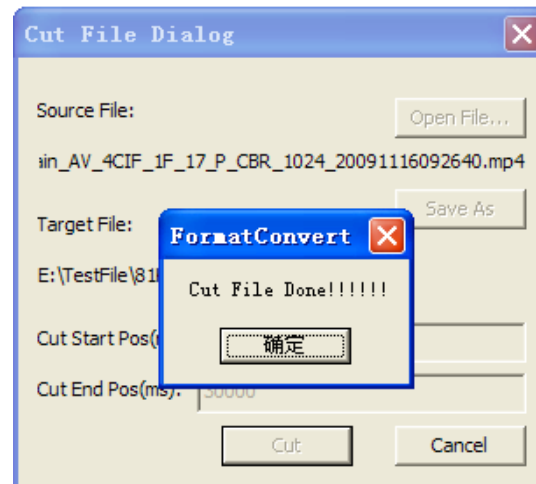
Click cut button of edit bar on file list or select file cut on right click menu, it will popup a dialog box shown as below:



Click  , select the original file which are to be cut, click  , choose file saving directory, set the file start time, if not setting, the default settings should be the whole file, shown as:

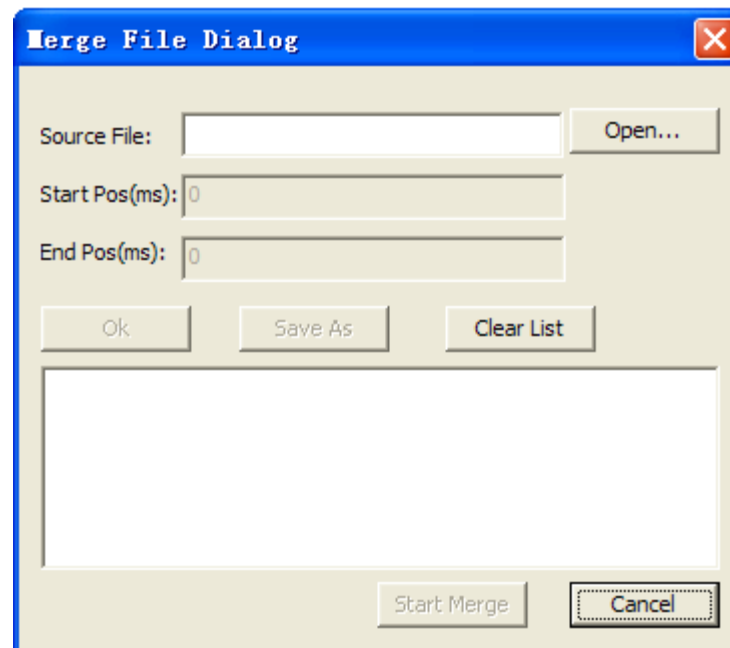


If cutting succeeds, it will popup a dialog box shown as below:

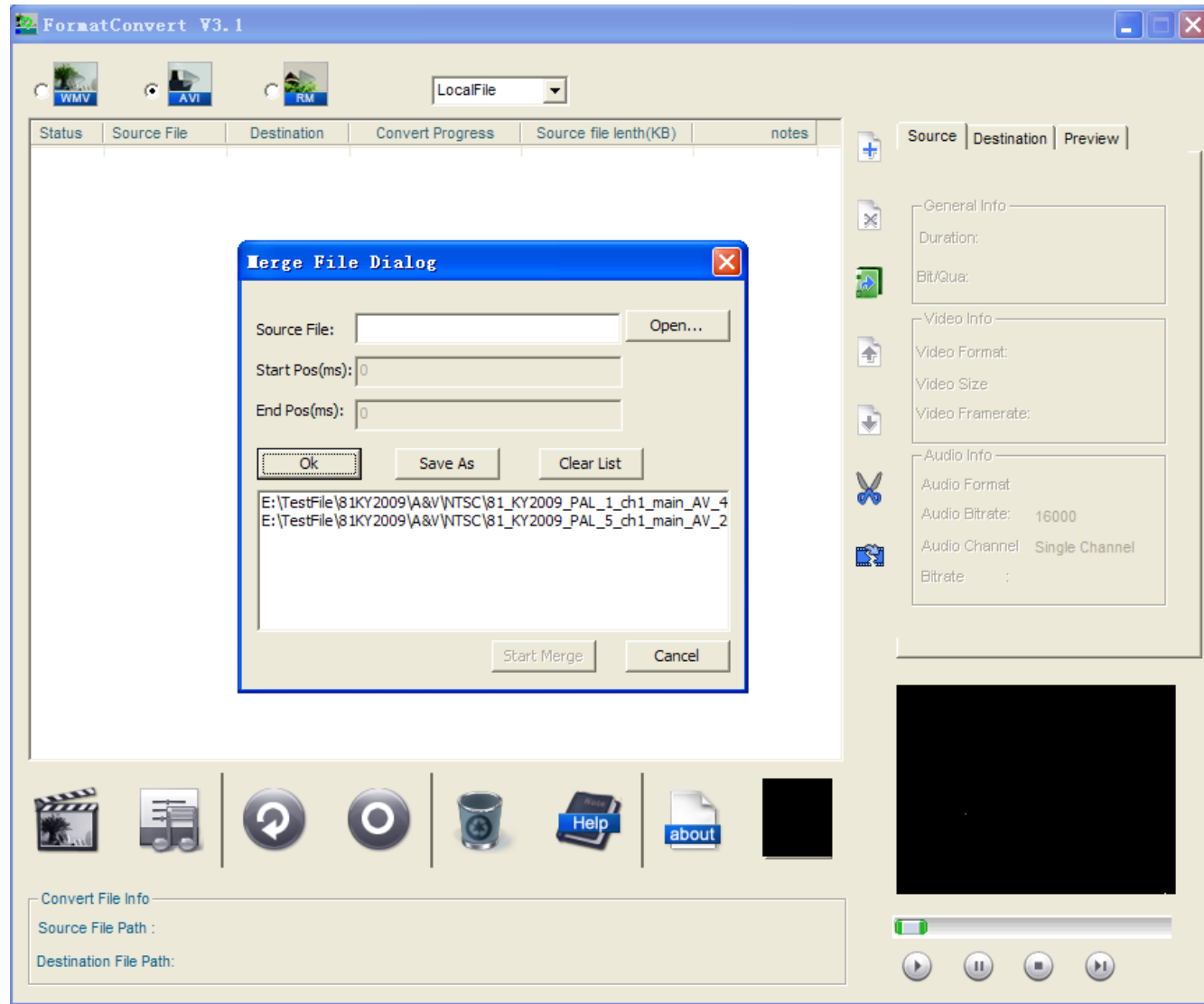


Completed file cutting, or it shows error code.

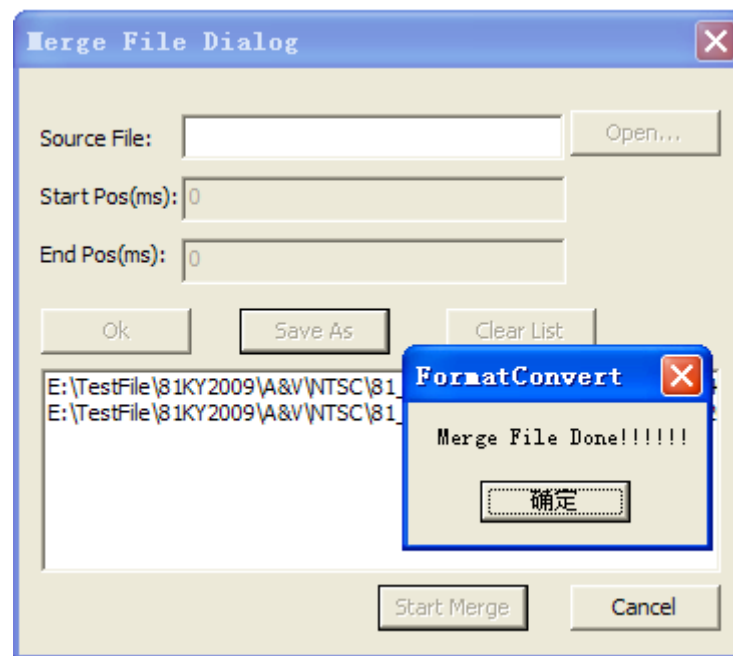
File merge (Local file only)



Click , select splicing documents and the start/end (unit: millisecond) time, click ok it will display on splicing list, if there are many splicing documents just repeat the operation, shown as:



Click **Save As** ,choose the destination document saving path, then click **Start Merge** ,documents start to splicing, when splicing completed, it will popup a dialog box shown as:



Splicing completed, or it will return error code.

