

AIR30 Range

Weatherproof Colour/Mono IR Camera

USER MANUAL



||||| Powered by |||||



TECHNOLOGY
ADVANCED INFRARED



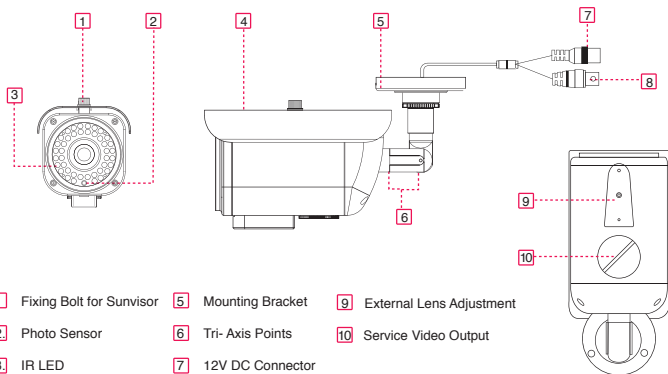
CAUTION

1. This installation should be made by a qualified service person and should abide to all local codes.
2. In order to prevent electronic shock and/or destroy waterproof seals, do not loosen any screws on the camera body.
3. Adjust the sunshield cover to avoid exposure of direct sunlight on the lens.
4. Do not touch the front glass directly. If necessary, use a soft cloth moistened with alcohol to wipe off dust or debris.
5. Avoid installation on a surface subjected to frequent vibration or shocks.
6. Do not operate the camera beyond its temperature range or power source ratings.
7. Should any damage or suspected damage occur, shutdown the power source, unplug and contact your service provider.
8. Do not install the camera under unstable lighting conditions. Severe lighting change or flicker can cause the camera to work improperly.
9. Never use the camera close to a gas or oil leak.
10. Do not disassemble the camera.
11. Do not drop the camera or subject the unit to physical shocks. Never keep the camera face to strong light directly, this can damage the CCD.
12. Ensure all removable covers are replaced to protect the inner components.
13. Do not install near devices which emit a strong electro-magnetic field.
14. Use a dry or damp cloth only for cleaning.

PLEASE FOLLOW THE ABOVE CAUTIONS – FAILURE TO DO SO MAY INVALIDATE THE WARRANTY OR CAUSE SERIOUS INJURY.

Remark: Changes or modifications not expressly approved by the manufacturer can cause the camera to be damaged and become inoperable. This may invalidate the user warranty.

The Concept Pro AIR30 is a weatherproof IR camera, suitable for monitoring areas in hostile conditions and in low light.



- | | | |
|----------------------------|-----------------------|----------------------------|
| 1 Fixing Bolt for Sunvisor | 5 Mounting Bracket | 9 External Lens Adjustment |
| 2 Photo Sensor | 6 Tri-Axis Points | 10 Service Video Output |
| 3 IR LED | 7 12V DC Connector | |
| 4 Sunvisor | 8 Video Out Connector | |

PACKING CONTENTS



SCREW
X3



PLASTIC-WALL PLUG
X3



DC CONNECTOR
X1



ALLEN KEY
X2



LENS ADJUSTMENT
COVER SCREW
X1



LENS ADJUSTMENT
TOOL
X1



USER
MANUAL
X1



MOUNTING
DRAWING PAPER
X1



SERVICE VIDEO OUT
CABLE (AIR3016 / AIR3026 ONLY)
X1



OSD CABLE
(AIR3026HG ONLY)
X1

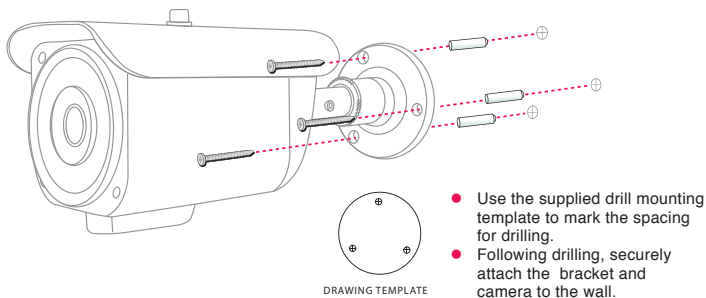
INSTALLATION

Important: Ensure all cautionary procedures are observed during installation.

It is recommended the camera is tested during the most demanding environmental conditions such as low light or bright sunlight to ensure continuity of effective CCTV monitoring. You may find the use of an ND filter helpful.

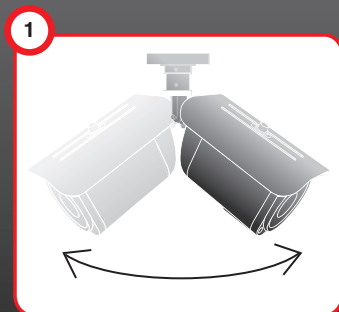
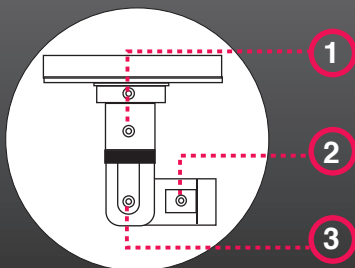
Remove the camera unit carefully from the box, reserving the accessory contents in a safe place.

FIXING TO A WALL

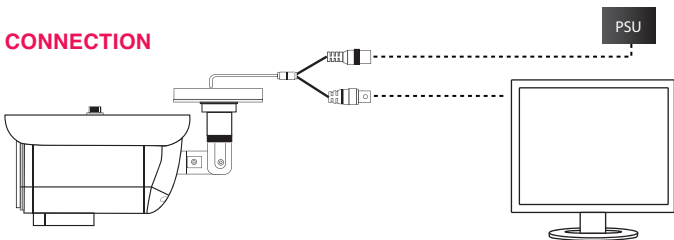


POSITIONING

Point the Camera towards the



CONNECTION



- Connect the video out port to your video cable running to the monitoring recorder.
- Check the power supply is of the correct level and connect your power supply into the power port on the Camera.
- View the picture on a monitoring device to check the power and video connection is working properly.

Troubleshooting

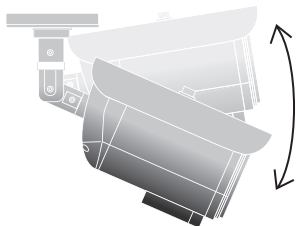
- Ensure all power and cable connections are correct with the Camera, DVR and Test monitor or Telemetry devices if used.
- Power Voltage Check - Remove the OSD cover to see if the green correct power LED is lit. If the red LED is lit the power voltage is too high. If the yellow LED is lit the power voltage is not high enough. If there are no LEDs lit there is no power getting to the camera
- If all power and cable connections are correct and the camera picture can not be produced or configured then contact your supplier for technical support.

intended area to be monitored.

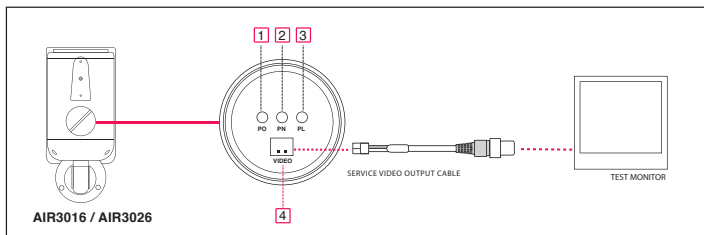
2



3



The Service Video Out panel contains a power indicator and test monitor connection for ease of adjusting the camera settings during installation.

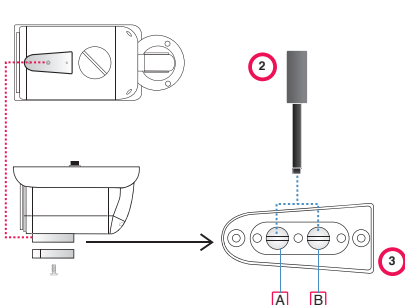


The power indicator LEDs display the power supply being fed into the camera and whether it is too high, low or correct.

1. "PO": Red LED - Voltage is too high
2. "PN": Green LED - Voltage is correct
3. "PL": Yellow LED - Voltage is too low
4. Extra video out for testing monitor - Attach your Video test monitor with the service video cable enclosed in your camera box. The camera footage will appear on your test monitor and zoom/focus adjustments can be carried out as the installation requires.

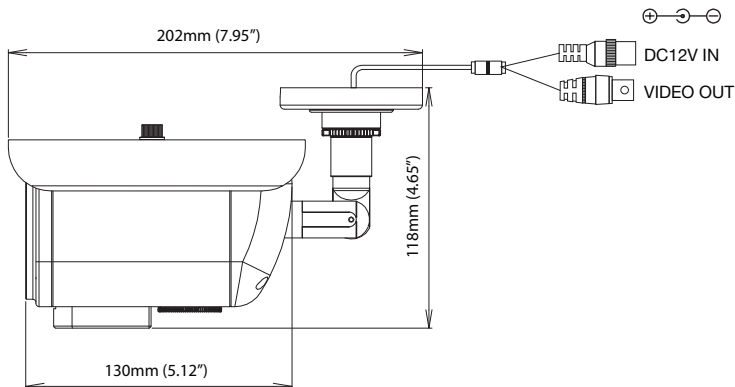
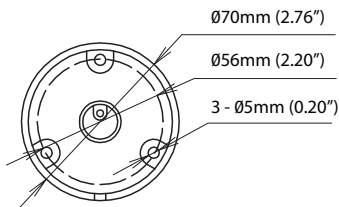
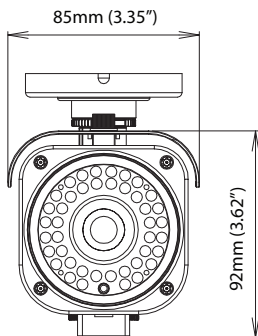
SEE OVERLEAF FOR AIR3026HG ON SCREEN DISPLAY

EXTERNAL LENS ADJUSTMENT

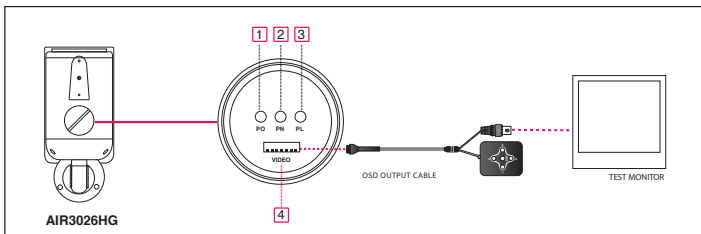


1. Open the lens adjuster cover and adjust focus and zoom. Loosen the screw on the lens adjuster cover.
2. Lens Adjustment Tool
3. Focus and Zoom Adjustments
 - A **Zoom**
Turn clockwise to zoom wide
Anti-clockwise to zoom narrow
 - B **Focus**
Turn clockwise to focus far
Anti-clockwise to focus near

DIMENSIONS

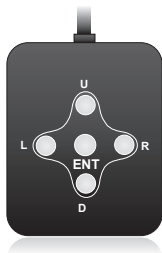


The Service Video Out panel contains a power indicator and test monitor connection for ease of adjusting the camera settings during installation.



The power indicator LEDs display the power supply being fed into the camera and whether it is too high, low or correct.

1. "PO": Red LED - Voltage is too high
2. "PN": Green LED - Voltage is correct
3. "PL": Yellow LED - Voltage is too low
4. Extra video out and OSD control connector - Attach your Video test monitor with the service video cable enclosed in your camera box. The camera footage will appear on your test monitor and zoom/focus adjustments can be carried out as the installation requires.



OSD Controller

- 1) Press "U" to navigate upwards
- 2) Press "D" to navigate downwards
- 3) Press "L" to navigate left
- 4) Press "R" to navigate right
- 5) Press "ENT" to open menu/sub-menu

LENS

SETUP

- ▶ 1. LENS MANUAL
- 2. EXPOSURE ↵
- 3. WHITE BAL AWB
- 4. DAY NIGHT AUTO ↵
- 5. 3DNR OFF
- 6. SPECIAL ↵
- 7. ADJUST ↵
- 8. RESET ↵
- 9. EXIT ↵

LENS	MANUAL
------	--------

EXPOSURE

EXPOSURE

- ▶ SHUTTER AUTO
- BRIGHTNESS 44
- AGC
- SENSE-UP OFF
- BLC OFF
- D-WDR OFF
- RETURN RET ↵

SHUTTER	AUTO, FLK, 1/100000 ~ X256		
BRIGHTNESS	0 - 100		
AGC	OFF / LOW / MIDDLE / HIGH		
SENSE UP	OFF		
	AUTO	X2 ~ X256	
BLC	OFF		
	BLC	GAIN	LOW / MIDDLE / HIGH
		LEFT / RIGHT	0~7
		WIDTH	
		TOP / BOTTOM	
		HEIGHT	
		RETURN	
	HSBLC	LEVEL	0~8
		LEFT / RIGHT	
		WIDTH	
		TOP / BOTTOM	
		HEIGHT	
		RETURN	
	D-WDR	OFF / INDOOR / OUTDOOR	
RETURN			

WHITE BALANCE

SETUP

- 1. LENS MANUAL
- 2. EXPOSURE ↵
- ▶ 3. WHITE BAL MANUAL ↵
- 4. DAY NIGHT AUTO ↵
- 5. 3DNR OFF
- 6. SPECIAL ↵
- 7. ADJUST ↵
- 8. RESET ↵
- 9. EXIT ↵

AWB	
AWC→SET	
MANUAL	BLUE
	RED
	RETURN
INDOOR	
OUTDOOR	
ATW	

DAY NIGHT

SETUP

1. LENS
2. EXPOSURE
3. WHITE BAL
▶ 4. DAY NIGHT
5. 3DNR
6. SPECIAL
7. ADJUST
8. RESET
9. EXIT

MANUAL
AWB
AUTO
OFF

AUTO	DELAY	0 - 63
	S-LEVEL	0 - 100
	E-LEVEL	0 - 100
	RETURN	
EXT		
B/W	BURST	OFF / ON
COLOUR		
RETURN		

3DNR

3DNR

▶ LEVEL
RETURN

RET 50

OFF		
ON	LEVEL	0-100
	RETURN	
RETURN		

SPECIAL

SPECIAL

▶ 1. CAM TITLE
2. D-EFFECT
3. PRIVACY
4. LANGUAGE
5. RETURN

OFF
OFF
ENGLISH
RET

CAM TITLE		OFF / ON			
D-EFFECT	FREEZE		OFF / ON		
	MIRROR		OFF / MIRROR / V-FLIP / ROTATE		
	D-ZOOM		OFF		
			ON	D-ZOOM	X1.0 ~ 32.0
			PAN		
			TILT		
			RETURN		
	GAMMA				
NEG.IMAGE					
RETURN					
PRIVACY	OFF				
	ON	AREA SELECT	AREA 1 - AREA 8		
		AREA DISPLAY	ON / OFF		
		LEFT/RIGHT			
		WIDTH			
		TOP/BOTTOM			
		HEIGHT			
		COLOR			
		RETURN			
LANGUAGE	ENGLISH/JAPANESE/SIMPLIFIED CHINESE/ TRADITIONAL CHINESE				
RETURN					

ADJUST

ADJUST

▶ SHARPNESS 16

BLUE 63

RED 56

RETURN RET ↵

SHARPNESS	0 - 31
BLUE	0 - 100
RED	0 - 100
RETURN	

RESET

RESET

▶ FACTORY RESET ↵

RETURN RET ↵

FACTORY	
RETURN	

OSD FACTORY DEFAULT SETTINGS

FUNCTION	STATUS	
EXPOSURE	SHUTTER	AUTO
	BRIGHTNESS	44
	AGC	MIDDLE
	SENS-UP	OFF
	BLC	OFF
	D-WDR	OFF

WHITE BALANCE	AWB	
DAY/NIGHT	AUTO	
3DNR	ON	
	LEVEL	50
ADJUST	SHARPNESS	16
	BLUE	56
	RED	56



AIR15 Range

18 IR LEDs

420 TVL / 520 TVL Options

3.6mm / 6mm Fixed Lens Options

182 x 70 x 81mm (WxHxD)



AIR45 / 50 Range

60 IR LEDs

Varifocal Lens Options

Service Video Output Option

On Screen Display Option

External Lens / Zoom Adjustments

340 x 219 x 100mm (WxHxD)



Extend the IR range up to
80m with AIR-IR.



AIR-IR

It is possible to extend the IR range of the AIR 45/50 range with an easy to attach bolt-on twin IR lamp. The AIR-IR twin lamp allows the camera unit to view up to 80m.

ITEM	AIR3016	AIR3026	AIR3026HG
Type	Colour/Monochrome (Removable IR Cut Filter)		
Signal System	PAL		
Pick Up Device	1/3" Sony Colour CCD	1/3" Sony Colour High Resolution CCD	1/3" Sony Colour High Resolution CCD
Picture Elements	537 (H) □ 597 (V)	795H·596V	795H·596V
Resolution	420 TVL	520TVL	600TVL Colour, 650TVL Mono
Minimum Illumination	0 Lux (IR LED ON)	0Lux	0Lux
	(42Pieces IR LED ON)		
Vertical Frequency	50Hz		
Horizontal Frequency	15.625KHz		
Clock Frequency	28.375MHz		
Scanning System	2:1 Interlace		
S/N Ratio	≥48dB	50dB	≥52dB
Electronic Shutter	1/50-1/100,000s		
Lens	3.5-8mm Varifocal IR Lens		
White Balance	AUTO Tracking	AUTO Tracking	Selectable
Back Light	ON	ON	Selectable
Auto Gain Control	ON	ON	Selectable
Gamma	0.45		
Sens-Up/ DSS		-	Selectable. Up to X256
D-WDR	-	-	Selectable
3 DNR	-	-	Selectable
Video Out-put	1V p-p,75Ω		
Power Supply	DC12V ±10%		
Current Consumption	350mA (Max)	380mA (Max)	380mA (Max)
IR Effect Distance	20~25M	25~30m	25~30m
	(65.6~82ft) (Outdoor)	(82~98.3ft) (Outdoor)	(82~98.3ft) (Outdoor)
Dimension	202×85×118mm (7.95"×3.35"×4.65")		
Weight	1300g (45.86oz)		
Storage Temperature	-30°+60° (-22°+140°)		
Operating Temperature	-30°+40° (-22°+104°)		

Design and specification are subject to change without notice.

Concept Pro

