

## Focus Quick Start Guide

Use these directions to get your machine up and running quickly.  
Read the entire user manual, though, to thoroughly understand your new espresso machine.

### Parts of the Machine



### Control Panel



**Espresso (Strong Coffee) Brew Button**  
Press this button once to brew an espresso or twice to brew two espressos.



**Long Coffee Brew Button**  
Press this button once to brew a long coffee or twice to brew two long coffees.



**ON/OFF Button**  
Turn the machine on or off, or bring the machine out of stand-by mode by pressing this button.



**Aroma / Pre-Ground Button**  
Press this button to adjust the quantity of coffee to be ground for each beverage, or to use pre-ground coffee in the bypass doser.

### Coffee Beans



Espresso beans subjected to long roasting periods may cause an oily surface on the bean. This oily surface causes the beans to stick together and may prevent a steady stream of beans from entering the ceramic disc grinder through the finger-guard in the bean hopper. As a result, the machine may not grind enough espresso and you may experience a weak coffee. To prevent this occurrence, we recommend stirring the beans in the bean hopper just before grinding. As an alternative, you may also let your beans sit in an open environment for about 5 hours, to allow the coffee oils to evaporate. (This will not change the aroma or flavor of your coffee.) After allowing the beans to sit for this time period, pour the beans into the bean hopper.

## Setting Up the Machine

### Fill Water Tank

- Remove water tank (Fig. 1).
- Fill water tank with fresh water and replace back in machine.

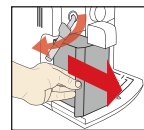


Fig. 1

### Fill Bean Hopper

- Open bean hopper lid and fill with whole espresso beans\*.
- Replace bean hopper lid.

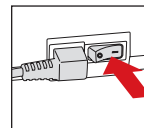


Fig. 2

### Attach Power Cord

- Attach power cord to machine and plug the other end into an outlet.
- Turn machine on by pressing the power switch on the back of the machine. (Fig. 2)



Fig. 3

### Prime Water Circuit

- Place container under the steam / hot water wand.
- Press ON/OFF button to turn machine on. (Fig. 3)
- Turn steam / hot water dial clockwise to hot water position. (Fig. 3)
- Machine will start automatically priming.
- When priming is complete, turn the dial back to home position.

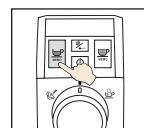


Fig. 4

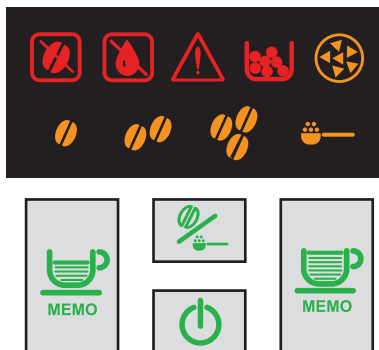
### Brew Espresso

- Your machine is now ready to brew fresh, delicious espresso.
- Place a cup under dispensing head and press the brew button. (Fig. 4)

\* Please note, this machine has been inspected and tested. For this reason, you may find a slight amount of grounds in your machine.

## Display Screen

The Syntia features a digital display screen and backlit buttons to show the exact functions of the machine at any time. Each different color used indicates a different mode.



\*\*For a full description of each message that may appear, please see the instruction manual.

## Contact Us

For more detailed instructions on how to operate the espresso machine, please refer to the user manual. If further assistance is needed, please contact Saeco Customer Service:

### Saeco USA

call: 1-800-933-7876  
email: [supportsaecousa@philips.com](mailto:supportsaecousa@philips.com)  
visit: [www.saeco-usa.com](http://www.saeco-usa.com)

### Saeco Canada

call: 1-514-385-5551  
email: [info@saeco.ca](mailto:info@saeco.ca)  
visit: [www.saeco.ca](http://www.saeco.ca)

### To Order Parts and Accessories

visit: [www.saecoutlet.com](http://www.saecoutlet.com)