



---

# ACR<sup>®</sup> Triad<sup>™</sup> Site Server

# Click Once Software System

---

Version 3.0

25 February 2010

---

## User's Guide

# Contents

Introduction .....	4
About Triad .....	4
Definitions .....	5
Help .....	6
About.....	6
Content .....	6
Update .....	6
Site Server Updating .....	7
Automatic Update.....	7
Manual Update .....	8
User Interface .....	9
Main Window.....	9
Unit & State.....	9
Logs .....	10
Server .....	11
Start.....	11
Stop .....	11
Exit.....	11
Options.....	13
Configure.....	13
Client Listener .....	13
Scanner Listener.....	14
Site Info .....	15
Image Storage .....	16
Browse for Folder.....	16
Data Synchronization .....	17
Audit Trail Service .....	18

Change Database .....	18
C-Store Destinations .....	20
Add .....	20
Edit .....	21
Check.....	21
Synchronize .....	23
Site Users .....	23
Site Studies.....	23

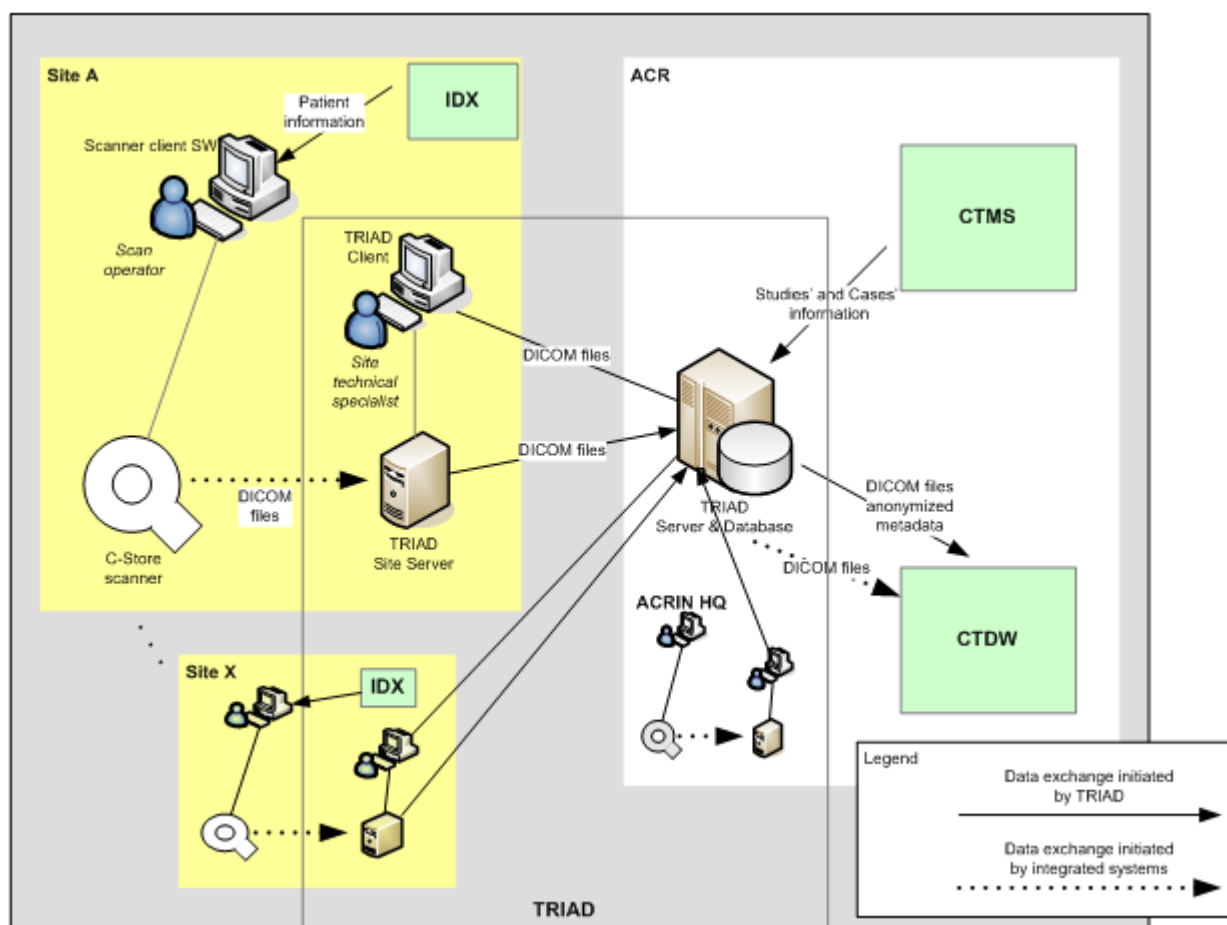
# Introduction

## About Triad



The main purpose of ACR© TRIAD™-OA system is to automate and facilitate DICOM exchange processes between ACR© and other interested institutions.

This schema describes TRIAD™ components interaction:



ACR© TRIAD™-OA Components Interaction Schema

Thus the TRIAD™ system includes the following modules:

- **TRIAD™-OA Main Application Server** - with Web server, Database Server and File Server included - for DICOM images storing and administrative tasks.
- **Web-based Client** intended for administrative tasks and search for the images.
- **TRIAD™ Site Server** - for receiving of the DICOM files from [C-Store scanners](#) and [storing them](#) before submitting to the [TRIAD™ Main Server](#). TRIAD™ Site Server allows [connection of TRIAD™ Rich Clients](#) for viewing and loading the DICOM series.
- **TRIAD™ Rich GUI Client** is implemented full ACR© TRIAD™-OA system functionality including P2P networking (connection with TRIAD™ Application Server and Site Server), search for the images by different criterias, uploading, submitting the DICOM image series from Client machine and the series from Site Server to the TRIAD™ Main Server, and image manipulation operations (viewing, editing, filtering).

This guide is addressed to TRIAD™ Site Server users only. For information on TRIAD™ Web-based client, please refer to ACR© TRIAD™-OA Web Client Help or User's Guide. For information on TRIAD™ Rich GUI Client, please refer to the TRIAD™ Rich GUI Client Help or User's Guide.

## Definitions

- Anonymization – Personal data removing from DICOM file headers.
- Case – research on some subject of single patient. One Case contains multiple Series of DICOM images. Each Case belongs to some Study.
- CTDW – Clinical Trials Data Warehouse. Uses TRIAD™ and CTMS as data sources.
- CTMS – Clinical Trials Management System. This system accumulates information about Studies from hospitals.
- C-Store – protocol for DICOM files interchange.
- C-Store scanner – radiological scanner device with C-Store protocol compliant interfaces or C-Store film digitizer.
- DICOMDIR file – file containing paths to Single-slice DICOM files constituting single Series.
- DICOM file header – part of DICOM file containing DICOM image metadata.
- DICOM metadata – associated with DICOM Image set of tags with values populated and interpreted according DICOM standard.
- DICOM Series – Image (slice) or set of Images (slices) combined by special Series ID.
- DICOM standard - Digital Imaging and Communications in Medicine - a global Information-Technology standard that is used in virtually all hospitals worldwide. The term "DICOM" is used for designation of special image with DICOM standard. It can include one frame or a set of frames (multislice DICOM) and metadata.
- DICOM Study – Series or set of Series combined by special Study ID.
- Exam – research on some subject of single patient made simultaneously. Each Exam contains multiple DICOM Series.
- IDX – software serves for Patient scheduling at Sites.
- Image - an Ordinary Image or a Slice.
- LMB - left mouse button.
- Multislice DICOM file - an image of DICOM standard composed of a set of frames (slices).
- Non-study Series – Series which does not belong to any Case or Study.
- Ordinary Image - Image of BMP, GIF, JPG, PNG or TIFF formats.
- Patient ID – identifier of a patient in single Site. Different Sites can have different patients with equal Patient IDs assigned. Patient ID field is used in CTMS and set as Patient ID DICOM file header tag.
- Personal data – patient's personal data existing in DICOM file headers.
- RMB - right mouse button.
- Series – ordered set of Slices. Most Series belongs to some Case.
- Series Metadata – common part of DICOM metadata of images included by Series, in TRIAD™ associated with Series, can be added with additional TRIAD™ specific metadata.

- Site – hospital.
- Site user – user belonging to Site.
- Single-slice DICOM file - single file containing single Slice plus DICOM header.
- Slice - single image (frame) made in course of Study. Each Slice belongs to some Series.
- Study – research on some subject containing multiple Cases of patients.
- XML – extensible Markup Language.
- XSD – XML Scheme Document.

## Help

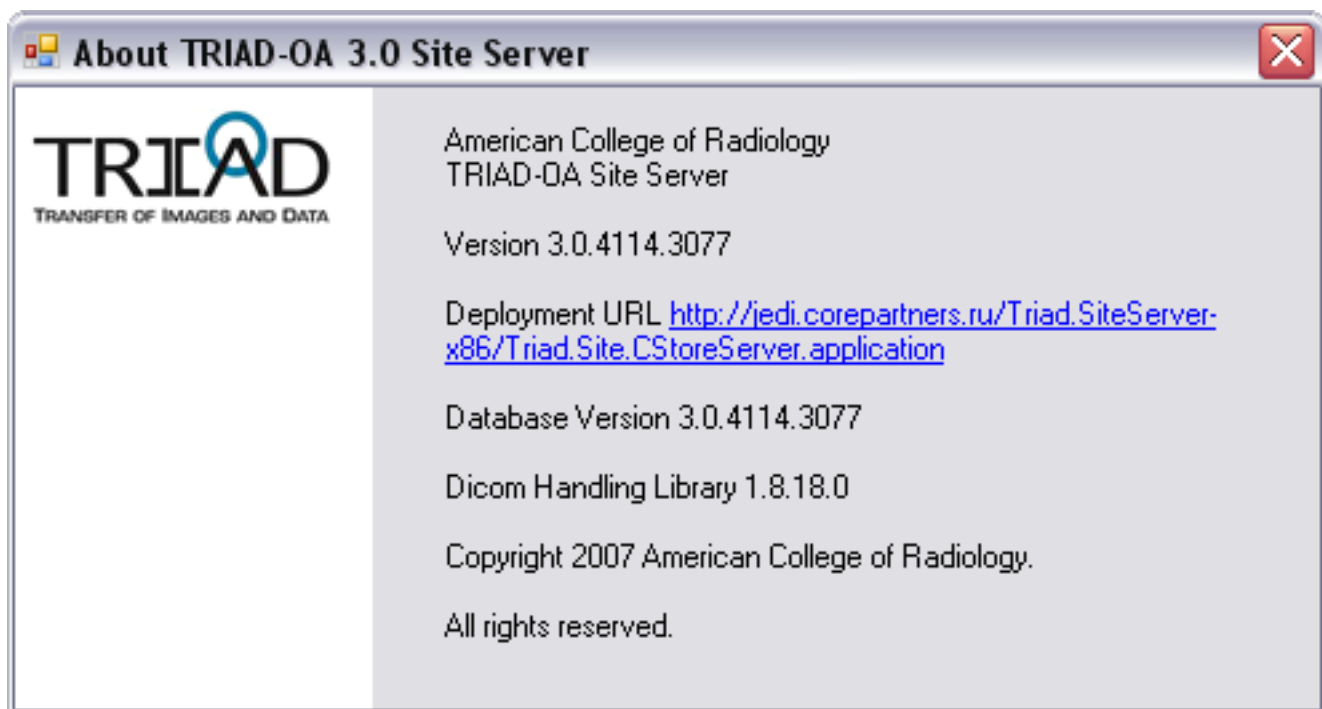
Menu: Help

This menu contains items About (to view information [about product version](#)), Content (link to [content help](#)) and Update (item for [manual update the application](#)).

## About

Menu: [Help](#) - About

Click this menu item to view product version information:



ACR© TRIAD™-OA Application Information

## Content

Menu: [Help](#) - Content

This menu item runs Triad™ Site Server content help..

## Update

Menu: [Help](#) - Update

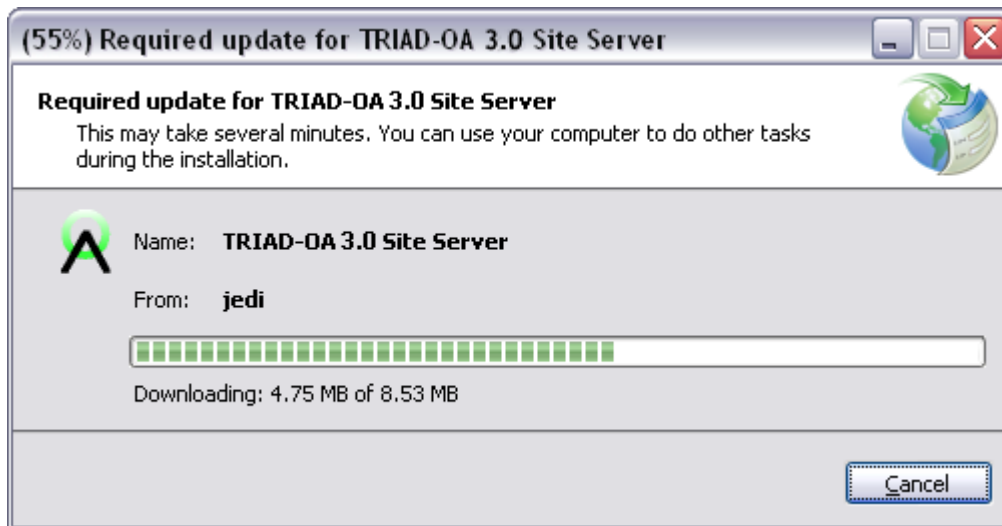
Use this menu item for [manual updating the application](#).

## Site Server Updating

Site Server Updating is performed [manually](#) or [automatically](#).

### Automatic Update

If the TRIAD™ Site Server setup was updated with a newer version than the current installed version of TRIAD™ Client, **then on application startup Site Server will be automatically updated**. Wait while the update is been installed:

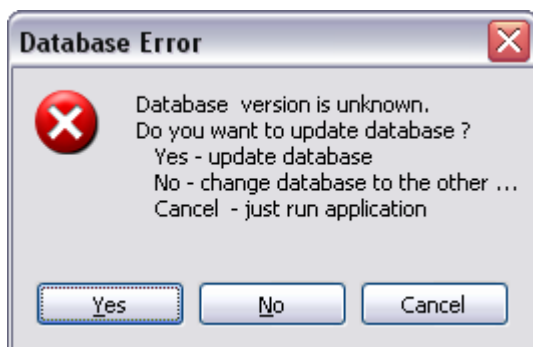


Updating TRIAD™-OA 3.0 Site Server

If you click Cancel in this window, then updating will be cancelled and application will not be launched.

**Note that services of Site Server can be started only if Site Server DB version and Application Version are equal.**

If you reinstalled the Application, you can receive the error message on application startup:



Message about Unknown DB Version

Click No to [change database](#) to another one. Click Yes to update the current database.

**Note that on the Site Server application launching it checks the connection with [Triad™ Application Server](#), and, for example - if Site Server and Application Server have different application versions, then you will receive a message about it and Site Server services will not be started.**

**If Site Server is older than Application Server, then Site Server automatic update will be started.**

Use the Help - Update menu item to start the Application [updating process manually](#).

## Manual Update

Menu: [Help](#) – [Update](#).

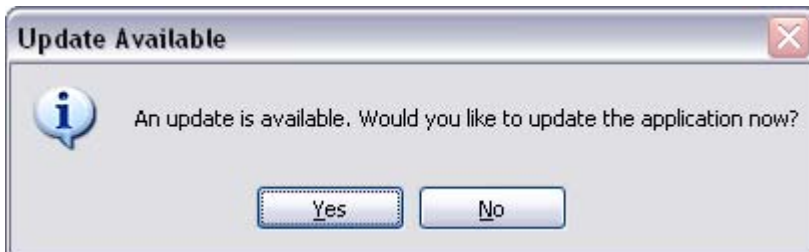
Use this menu item to check manually for Site Server updates.

If no update is available, you will see the following message:



Message If No Update Available

If an update is available, then the following window will appear:



Message about Available Update

Click Yes to [update the application](#) and wait for the update to complete, or No - if you do not wish to install the update just now.

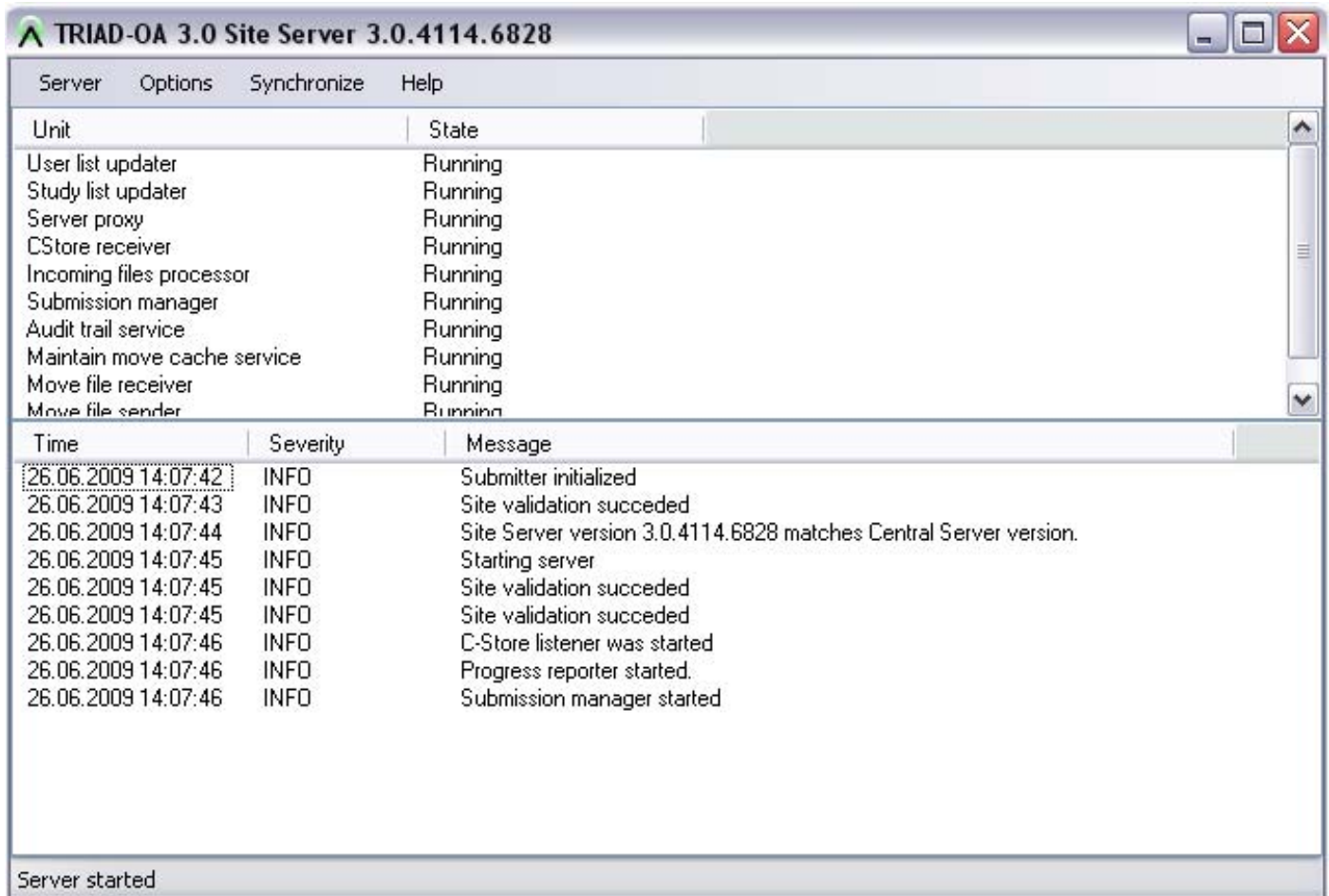
**If you updated the application, then you should restart it after updating. The message about it will appear.**



# User Interface

## Main Window

The top part of ACR© TRIAD™-OA Site Server main window contains main menu which allows you running ACR© TRIAD™ Site Server functions.

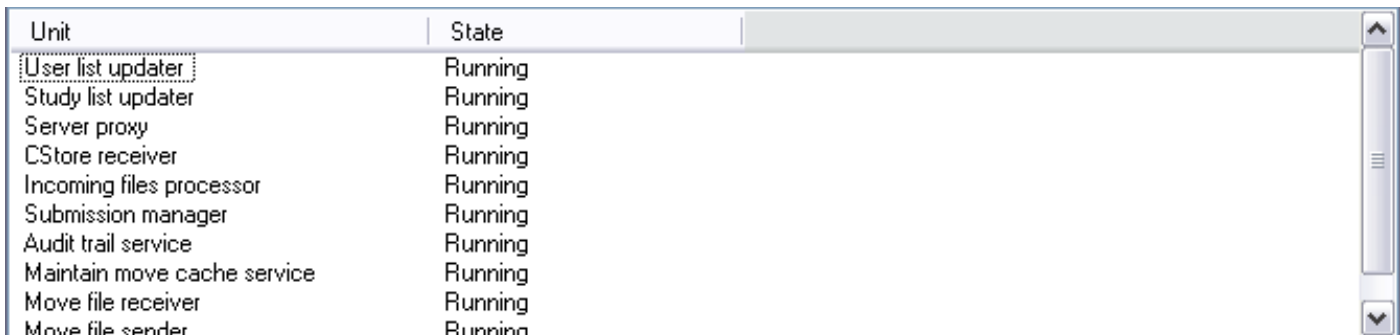


TRIAD™ Site Server Application Window

[Unit & State](#) pane and the [Logs](#) pane are located under the main menu.

## Unit & State

The Unit and State pane is located under the main menu:



Unit and State Pane

This pane shows the state of eight Site Server services:

- User List Updater - service is responsible for [updating the list of TRIAD™ Users](#) from TRIAD™ Main Server
- Study List Updater - service is responsible for [updating the list of TRIAD™ Studies](#) from TRIAD™ Main Server
- Project List Updater - service is responsible for updating the list of [TRIAD™ Projects](#) from TRIAD™ Main Server
- Server Proxy - service is responsible for remote connections with TRIAD™ Rich Clients and TRIAD™ Main Server
- CStore Receiver - service is responsible for receiving the images from CStore scanners to Site Server
- Incoming File Processor - service is responsible for the processing of incoming files
- Submission Manager - service is responsible for submitting the images from Site Server to TRIAD™ Main Server
- Audit Trail Service - service is responsible for sending off audit trail information to a collection and logging application events

## Logs

The Logs pane is located under the [Unit and State](#) pane and contains information for STS (Site Technical Specialist):

Time	Severity	Message
15.06.2009 13:34:54	INFO	Submitter initialized
15.06.2009 13:34:56	WARN	Site validation failed
15.06.2009 13:34:56	INFO	Site Server version 3.0.4114.3077 matches Central Server version.
15.06.2009 13:34:56	INFO	Starting server
15.06.2009 13:34:56	WARN	Site validation failed
15.06.2009 13:34:56	ERROR	Error while starting SubmissionManagerBackgroundService : Login on TRIAD C...
15.06.2009 13:34:57	WARN	Site validation failed
15.06.2009 13:34:57	INFO	C-Store listener was started

### Logs Pane

The structure of Logs is the following:

- Time when this event has happened
- Severity of the event - Info, Warning or Error
- Message - a short description of the event


# Server

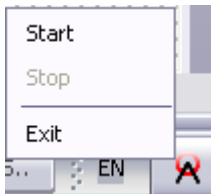
## Start

Menu: Server - Start

Use this menu item to start all the TRIAD™ Site Server services in case they are stopped.

You may [set an auto launch option](#) on startup for all TRIAD™ Site server services.

The TRIAD™ Site Server icon in tray is red (  ), if Site server is stopped. If you want to start all the TRIAD™ Site Server services, make RMB click on the Site Server icon in tray. The menu will appear. Now click Start to start TRIAD™ Site Server:




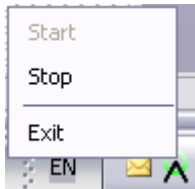
Click "Start" to start all the TRIAD™ Site Server Services

## Stop

Menu: Server - Stop

Use this menu item to stop the TRIAD™ Site Server (i.e. to stop all its services) - in case they are running.

If TRIAD™ Site Server is running, its icon in tray is green (  ). If you want to stop all the TRIAD™ Site Server services, make RMB click on the Site Server icon in tray. The menu will appear. Now click Stop to stop TRIAD™ Site Server:



Click "Stop" to stop all the TRIAD™ Site Server Services

## Exit

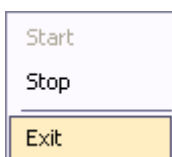
Menu: Server - Exit

Use this menu item to exit the TRIAD™ Site Server.



Remember that after you exit the program all TRIAD™ Site Server services will be stopped.

**Note that if you click the  button, the program is not closed, but only minimized to tray.**

Click right mouse button on the Site Server icon in tray and select the "Exit" menu item to exit the program:



Click "Exit" to exit the TRIAD™ Site Server

Double click the Site Server icon in tray (, or  - depending of application state) to bring the application to front.

# Options

## Configure

Menu: Options - Configure

Use this menu item to configure your TRIAD™ Site Server options for properly work:

- [Client Listener](#) Parameters
- [Scanner Listener](#) Parameters
- [Site Info](#)
- [Image Storage](#)
- [Data Synchronization](#)
- [Audit Trail Service](#)

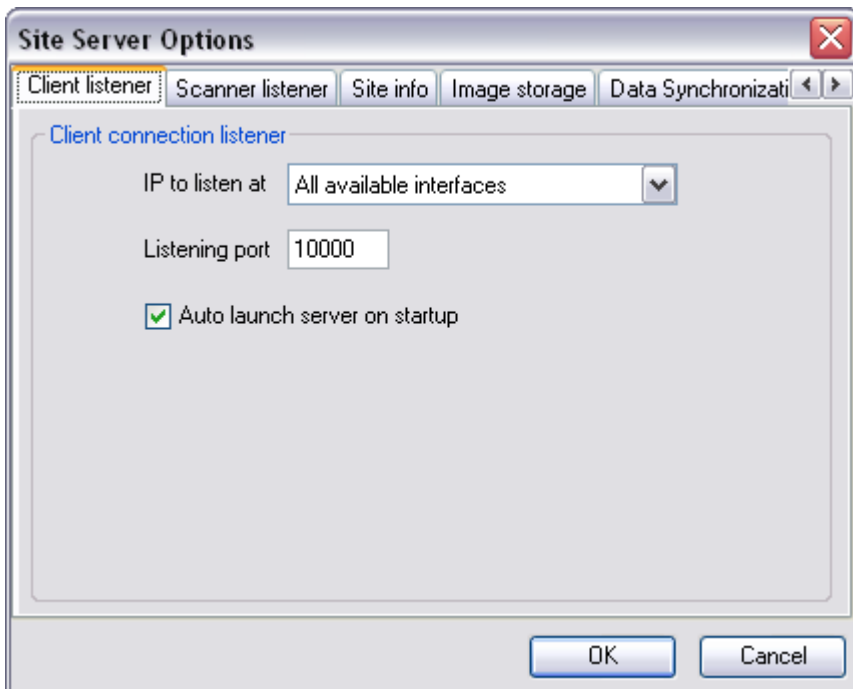
When configuration is finished, click the "Ok" button. Then TRIAD™ Site server will ask you:



Question about Restart Application with New Settings

Click "Yes" to restart Site Server with the new parameters just at the moment, or "No" - to restart Site Server later.

If you made some changes by mistake and you don't want to apply them, click Cancel in the bottom part of "Site Server Options" window:

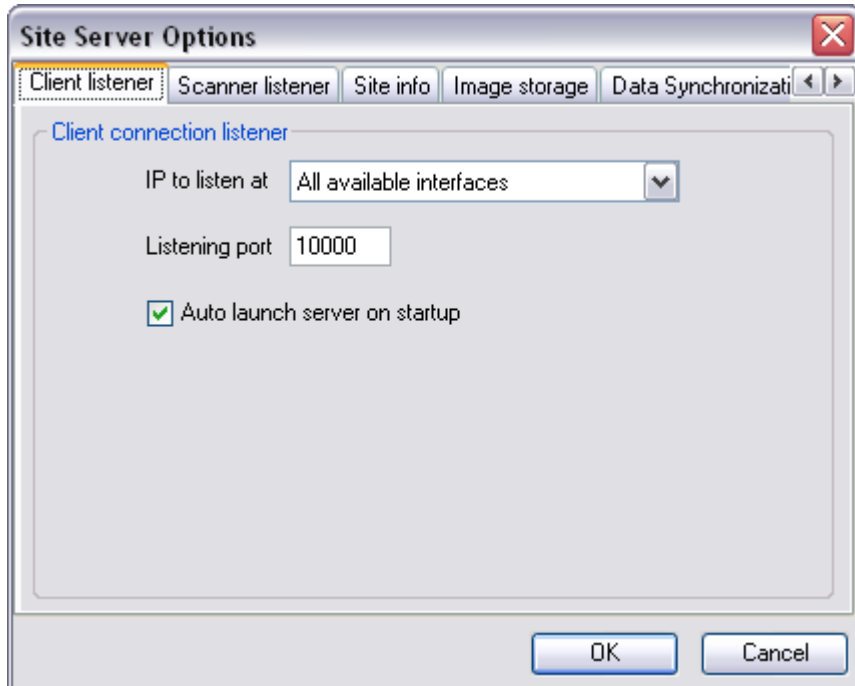


Site Server Options Window

## Client Listener

Menu: Options - Configure - Client Listener

This pane contains information for connections TRIAD™ Site Server with TRIAD™ Rich Clients.



Client Listener Options

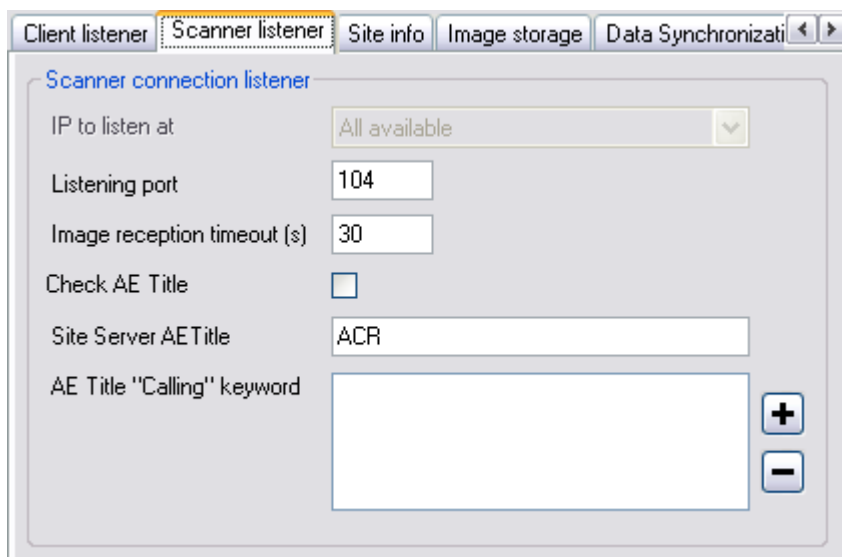
Client connection listener fields are the following:

- IP to listen at - select an IP address of TRIAD™ Site Server from drop-down list by means of which Site Server will connect the TRIAD™ Rich Clients. If Site Server has several IP addresses and you want to connect with Rich Clients by means of all of them - then select the "All available interfaces" item.
- Listening Port - enter a port number for listening TRIAD™ Rich Clients.
- Auto launch server on startup - check up this item for auto launch all the TRIAD™ Site Server services on TRIAD™ Site Server startup. This option is switched on by default.

## Scanner Listener


Menu: Options - Configure - Scanner Listener

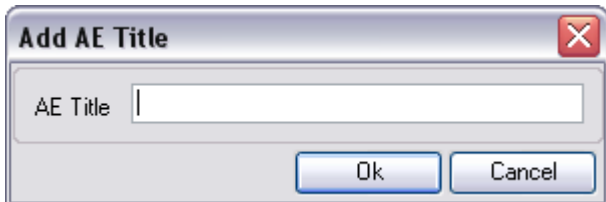
This pane contains information for connections of TRIAD™ Site Server to TRIAD™ C-Store Scanners.



Scanner Listener Options


Scanner connection listener fields are the following:

- IP to listen at - select an IP address from drop-down list to connect to C-Store Scanners.
- Listening Port - enter a port number for listening of C-Store Scanners.
- Image Reception Timeout - enter a value of time period (in seconds), after which System (during downloading series) will change its status from "Receiving" to "Idle".
- Check AE Title - tick this checkbox in order to turn on AE Title validation.
- Site Server AE Title - enter AE Title for the Site Server.
- AE Title "Calling" keyword - enter a keyword(s) for Scanners, from which Site Server will be able to receive images.
  - Click the  button to add the keyword to the list - the following window will appear. Enter the title to this window:



Add AE Title Window

and click Ok.

- Click the  button to remove selected keyword(s) from the list. Press Ctrl or Shift button to select several items.

## Site Info

Menu: Options - Configure - Site Info

This pane contains information about Site Server which is necessary for authentication to the TRIAD™ Main Server.

Site Info Options

The Site Info fields are the following:

- ACR Master Inst. ID - enter ACR Master Institution ID.
- Site Key - enter the site key - ask TRIAD™ administrator for this information (see Triad™ Web Client Help and User's Guide for details)
- Site Name - enter the site name

# Image Storage

Menu: Options - Configure - Image Storage

This pane contains information about storage root directory on the Site Server, which is used for files that were received from scanners.

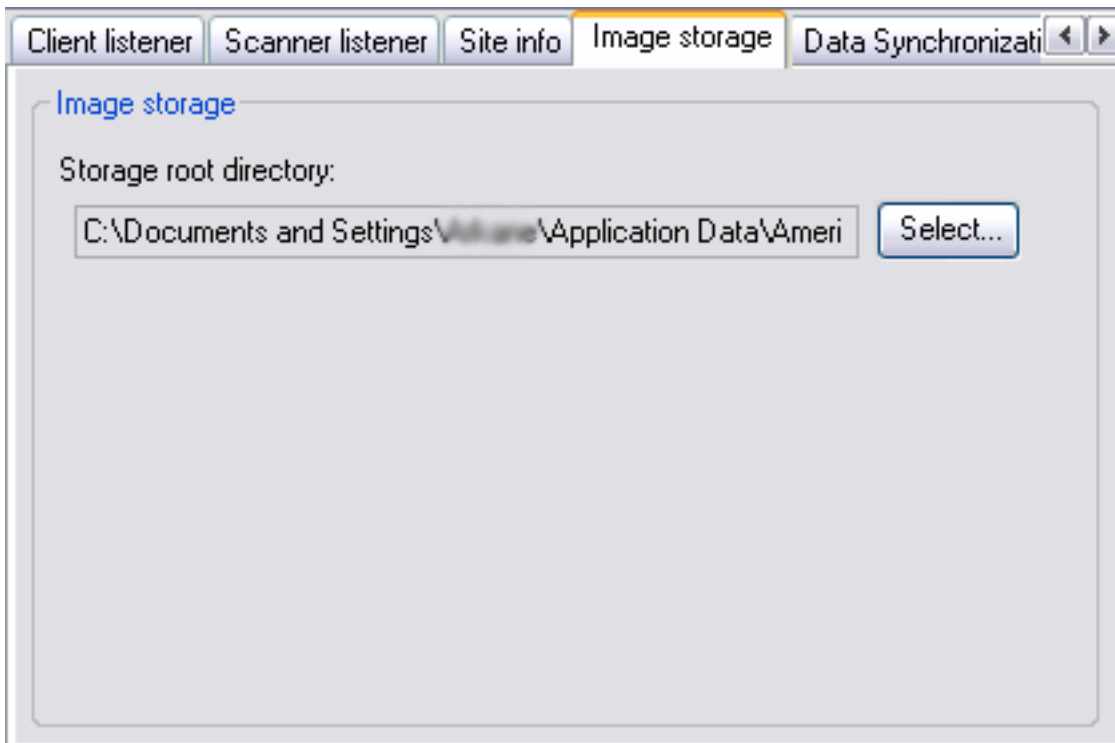


Image Storage Options

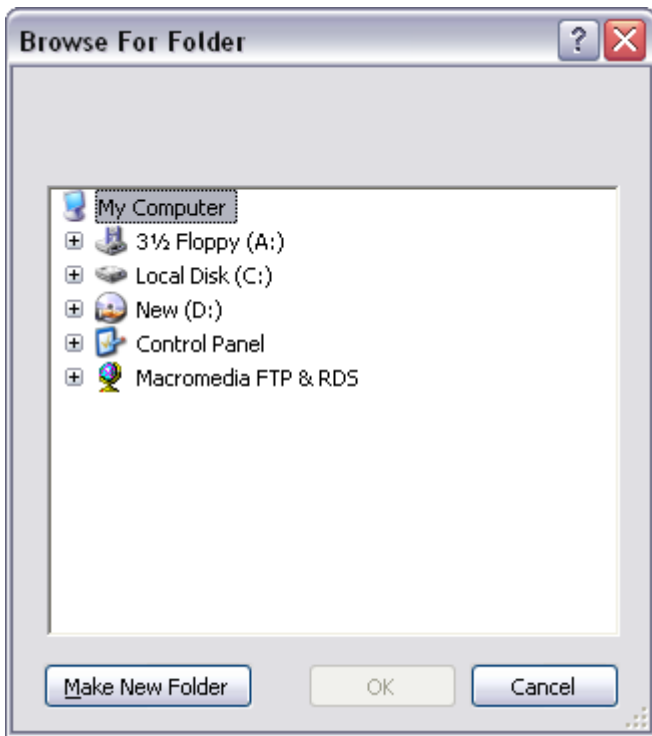
By default Storage Root Directory is C:\Documents and Settings\\Application Data\American College of Radiology\TRIAD\Site [version]\Images.

If you want to change the Image folder, click the Select button. "[Browse for folder](#)" window will appear.

## ***Browse for Folder***

The "Browse for folder" window is used to select or create a folder where you want to store images.





Browse for Folder Window

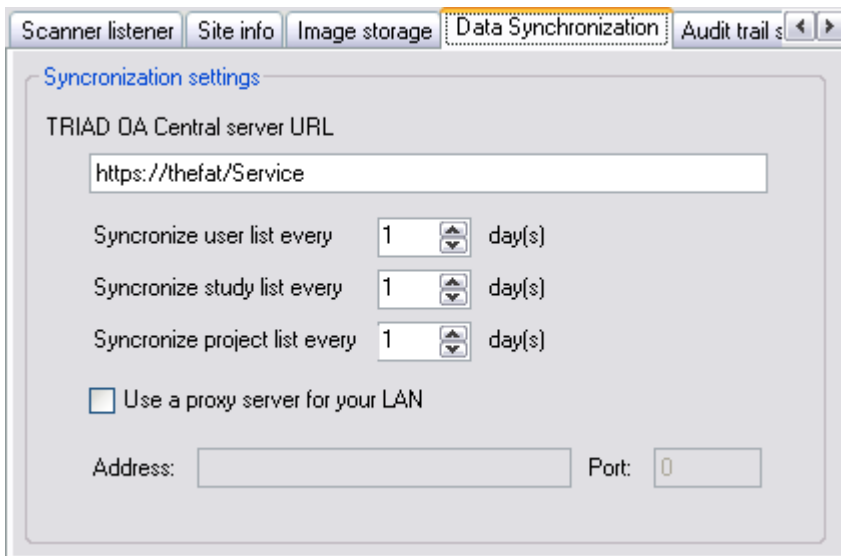
Just select the folder you want to place images and click "Ok".

If you want to create a new folder (in the selected folder), click "Make New Folder" button. A new folder named "New Folder" will be created. You can rename it. Click on the folder you want to rename with the RMB and select "Rename" from the menu. Enter the name you want. Then click "Ok".

## Data Synchronization

Menu: Options - Configure - Data Synchronization

This pane contains parameters for synchronization of the User, Study and Project lists with TRIAD™ Main Server information.



Data Synchronization Options

Synchronization settings are the following:

- TRIAD™ OA Central Server URL - enter the URL of TRIAD™-OA Main Server.

- Synchronization user list every ... day(s) - enter period in days for synchronization of the user list from TRIAD™ Central (Main) Server.
- Synchronization study list every ... day(s) - enter period in days for synchronization of the study list from TRIAD™ Central (Main) Server.
- Synchronization project list every ... day(s) - enter period in days for synchronization of the project from TRIAD™ Central (Main) Server.
- Use a proxy server for your LAN - select this item in case you are using proxy to connect to Internet. In this case you must provide proxy server IP address and port number.

Note that synchronization takes place every time you [start](#) TRIAD™ Site server - if it is configured properly.

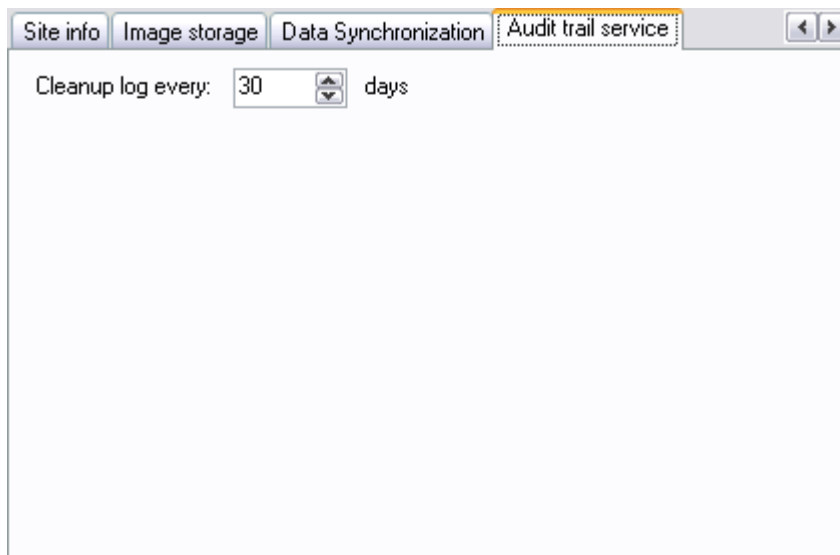
**Note that during start Site Server application checks version of Triad™ Application Server, and, if Site Server and Application Server have different versions, you will be notified about it and Site Server services won't start.**

**If Site Server version is older than the one of Application Server, Site server [automatic update](#) will be started.**

## Audit Trail Service

Menu: Options - Configure - Audit Trail Service

This pane contains parameters for audit trail service (log messages from Rich Client about its state and activity are sent to the Site Server DB to be analyzed later if necessary):



Audit Trail Service Options

Audit trail service setting is the following:

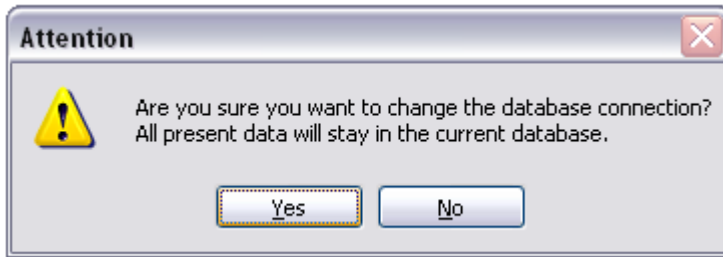
- Cleanup log every <..> days - enter number of days. Then audit trail logs older then <..> days will be removed from Site Server.

## Change Database

Menu: Options - Change Database

Use this menu to change your database settings.

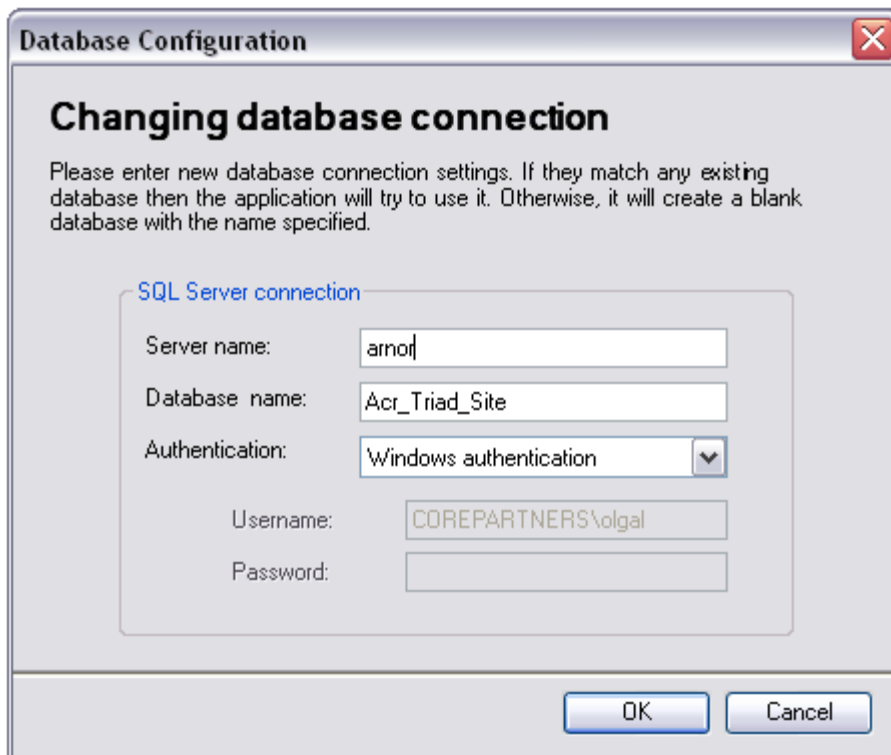
The dialog box will appear:



Attention Message

Click Yes to change DB or to view DB info.

By default, your current database information appears in the Database Configuration window:

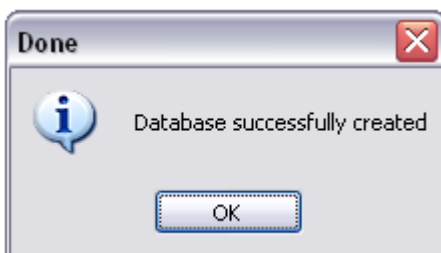


Database Configuration Window

You may set the new database information to create and use a new database, or you may set DB, previously created for Site Server.

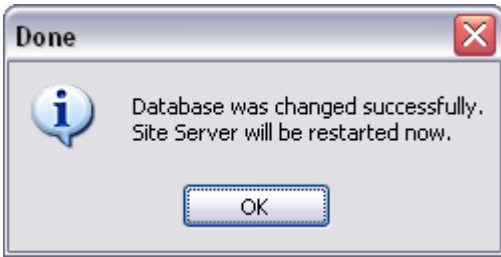
**Remember, that if you set new DB, then all previous Site Server information will not be accessible.**

1. Click Ok and wait while new DB will be created. After successful completion, the following message will appear:



Database Successfully Created Message

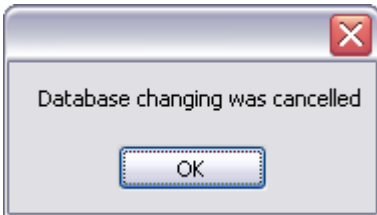
and then the following message will appear:



Message about Restarting the Application

Click Ok to restart Site Server.

2. Click the Cancel button to cancel changing the database connection. Then the following window will appear:



Message "Database changing was cancelled"

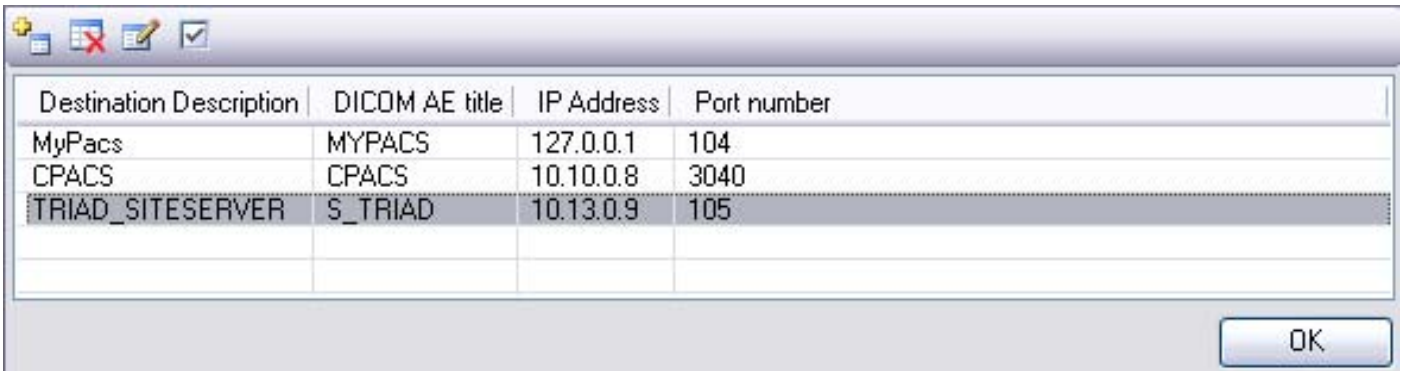
**Note that services of Site Server can be started only if DB version and Application Version are equal.**

If you reinstalled the Application, you can receive the [warning message](#) at the start of the application.


## C-Store Destinations


Menu: Options - C-Store Destinations


Use this option to add, edit or check C-Store Destinations.




C-Store Destinations window

Add () - add destination button. Click it if you want to [add a new C-Store Destination](#). It's always active.

Delete () - delete destination button. Select a destination you want to delete and click this button to delete it. It's active only when some C-Store destination is selected.

Edit () - edit destination button. Select a destination you want to edit and click this button. A [new window will appear](#).

Check () - check C-Store destination. Select a destination you want to check for availability and click this button. Depending on its availability, [a pop-up window will appear](#).

## Add

Menu: Options - C-Store Destinations - Add button

**Add C-Store destination**

Destination description: TRIAD\_SITESERVER

IP Address or Host Name: 10.13.0.9

AE Title: S\_TRIAD

Port number: 105

Buttons: Cancel, OK

Add C-Store destination form

- Destination description** - enter a name that describes your C-Store destination.
- IP Address or Host Name** - enter IP Address or Host Name of C-Store destination.
- AE Title** - enter AE Title here.
- Port number** - enter port number here.

### Edit

Menu: Options - C-Store Destinations - Edit button

**Edit C-Store destination**

Destination description: MyPacs

IP Address or Host Name: 127.0.0.1

AE Title: MYPACS

Port number: 104

Buttons: Cancel, OK

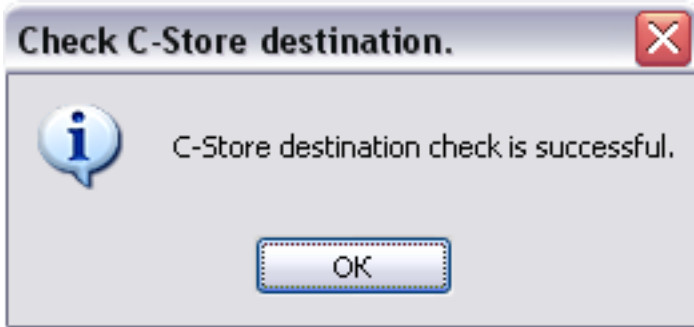
Edit C-Store destination form

- Destination description** - enter a name that describes your C-Store destination.
- IP Address or Host Name** - enter IP Address or Host Name of C-Store destination.
- AE Title** - enter AE Title here.
- Port number** - enter port number here.

### Check

Menu: Options - C-Store Destinations - Check button

In case C-Store destination check has finished successfully, this pop-up window will appear:



C-Store destination check successful

In case the check didn't succeed other pop-up windows will appear describing the problem occurred.

# Synchronize

Menu: Synchronize

The TRIAD™ Site Server application synchronizes the lists of Site Users, Site Studies and Site Projects from TRIAD™ Main Server as often as it specified in the Options - Configure - [Data Synchronization](#) item.

But if you need to synchronize one of these lists or both just now - use menu item Synchronize - [Site Users](#) / [Site Studies](#)

## Site Users

Menu: Synchronize - Site Users

This menu item is to [synchronize](#) the Site Users information from TRIAD™ Main Server just now.

## Site Studies

Menu: Synchronize - Site Studies

This menu item is to [synchronize](#) the Site Studies information from TRIAD™ Main Server just now.