

Content

Remote Control & Key	1 - 2
iLoc system (Int. pat. pending)	3 - 4
Opening & Closing	5 - 6
Mounting & Dismounting	7 - 8
Case Models	9 - 10
Optional Accessories	11

coocase

Remote Control & Key

Remote control

The remote control uses a high-frequency transmitter, which has the following advantages:

- it is not necessary to aim directly at the receiver in the case.
- it operates through all materials. (e.g., cloth, plastic, etc.)
- it has a very long range. (approx. 50m)

Locking (arming of alarm) & Unlocking (disarming of alarm)

Press button **A** () once to lock the case and press button **B** () once to unlock it.

Pressing button **A** () and holding it for three seconds engages the alarm. The alarm light will begin flashing after five seconds. Press button **B** () to disengage the alarm.

Turning off the siren when alarm is triggered.

- 1) Press button **A** () to turn off siren but leave alarm active.
- 2) Press button **B** () to turn off siren and disable alarm.

- If the case is open or incorrectly closed, the locking device will not operate.
- If the remote control does not function, reinitialize it by reseating the batteries.
- If the remote control does not function, it is still possible to open the case using the key.

NOTE : Mobile phones or other high frequency devices may interfere with the remote control's operation.

CAUTION

The remote control has a considerable operating range which allows you to lock or unlock your case from a distance. Handling the remote control may sometimes, for example in your pocket, could accidentally open the case.

Changing the remote control battery

Unscrew cover to access battery (see below).
One battery is required per remote control. ref : 27A 12V

Water-resistant

The interior of the remote control features a silicon rubber barrier for water resistance.

CAUTION

Do not discard used batteries. Return them to an approved dealer or to approved collection centers.

iLoc system (Int. pat. pending)

**Anti-theft feature
(applicable only for models with iLoc system)**

The Coocase iLoc system and integrated brake lights draw power primarily from the motorcycle battery. After installation, if the electrical wire connecting the base plate to the motorcycle battery is tampered with or the power disconnected, the iLoc system will activate automatically and engage the alarm for one minute.

Self locking feature

The iLoc system will automatically lock the case 15 seconds after opening, regardless of whether the case is open or closed.

iLoc reserve battery

All iLoc units come fitted with a built-in reserve alarm battery. This battery will automatically charge once connected to the motorcycle battery. Please allow 12 hours for the battery to charge fully. The power drained from the motorcycle battery is negligible.

A - Reset button.

Warning: Unnecessarily pressing the reset button will cause remote controls to become desynchronized with the iLoc system.

All cases installed with iLoc have an included remote control. In the event that the remote control is lost, a replacement may be purchased.

Synchronising remote control with iLoc system

Step 1 - Hold the reset button until it beeps (approximately eight seconds). This indicates that the memory is cleared. You can now synchronize two controllers to the iLoc system.

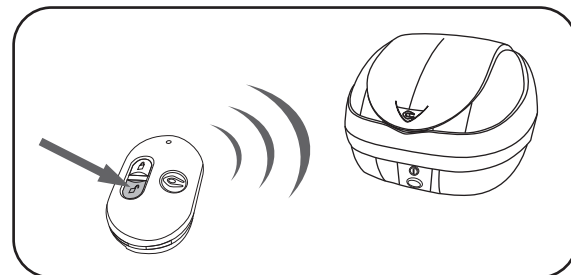
Step 2 - Hold the reset button until it beeps (approximately two seconds), then hold either button on the remote control until a beep is heard on the iLoc unit. The remote is now synchronized.

NOTE - Only two remotes can be synchronized with the iLoc system.

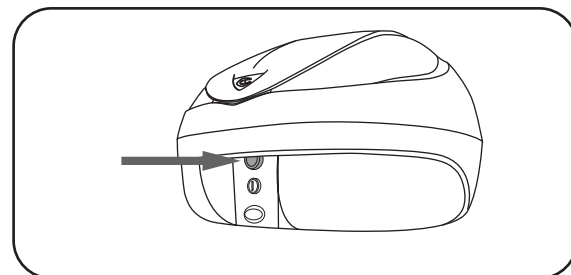
B - Sensitive dial

- Turn dial left to disable alarm.
- Turn dial right to adjust alarm sensitivity.

Opening & Closing the Case



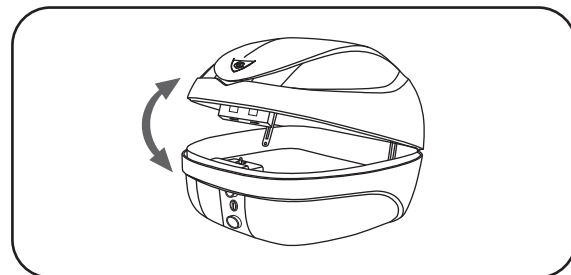
To unlock the case, press the unlock button on the remote control.



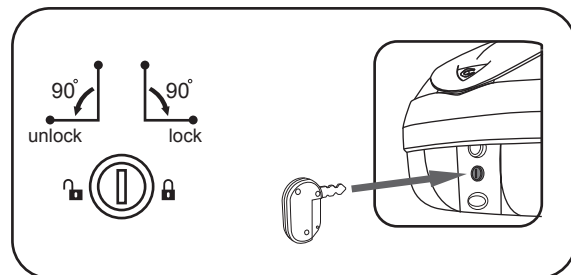
Push the upper button on the bottom case to release the lid of the case.

5

coocase



Lift up the top of the case to fully open the case. When closing, press firmly until a click is felt to ensure that lid latches.

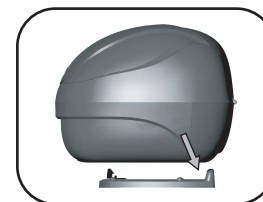
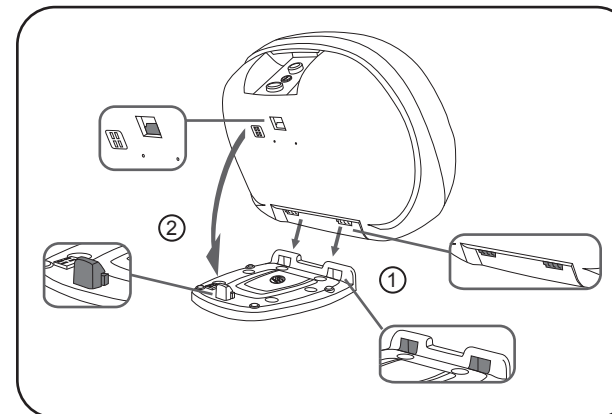


It is also possible to open the case using the key instead of the remote control.

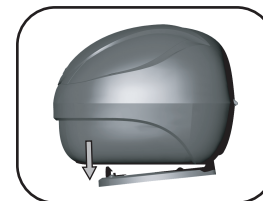
Turn clockwise to lock and counterclockwise to unlock.

6

Mounting & Dismounting case onto base plate



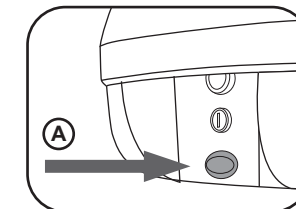
1 - Insert rear end of case into slots as shown.



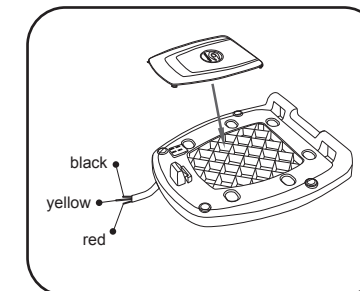
2 - Press front of case down firmly until the case locks into place.

7

coocase



A - Release Button
Press release button to disengage the case from the mounting plate. Lift front of case and slide forward to remove.



Wiring Information

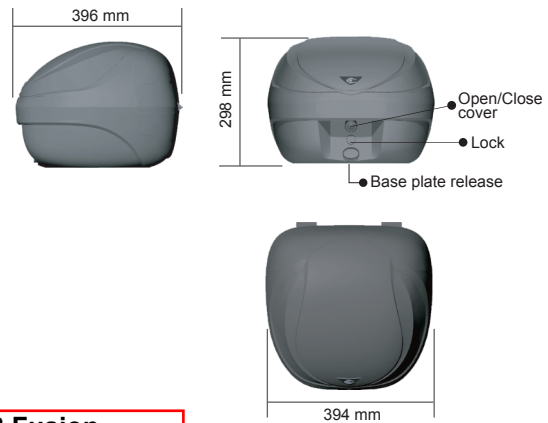
Black - negative (-)

Yellow - brake light

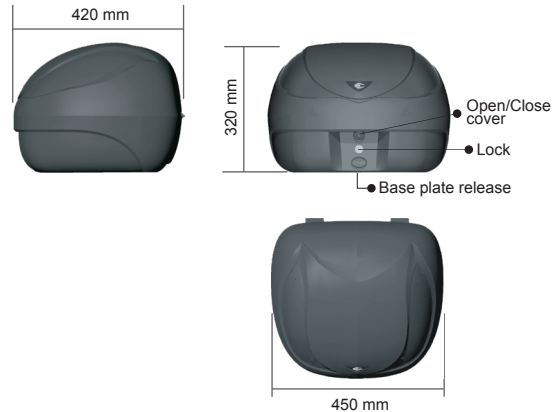
Red - positive (+)

8

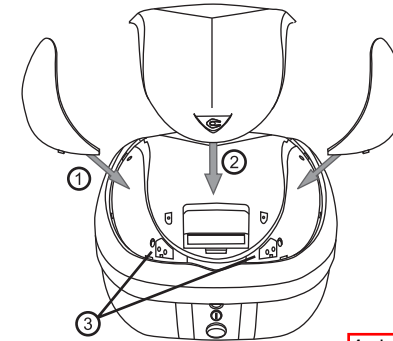
Case Models



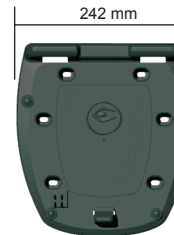
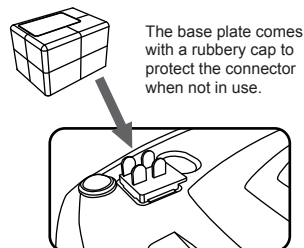
V28 Fusion



V36 Wizard



- 1 - Lens
- 2 - Removable lid panel
- 3 - Led Lights



Base Plate

Optional Accessories

Inner Liner Features

- Provides a comfortable feel and good aesthetics for the interior
- Removable and washable
- Reduces noise and scratches from rolling objects within
- Provide limited insulation to keep packed foods/drinks warm or chilled

V28 Fusion



top layer

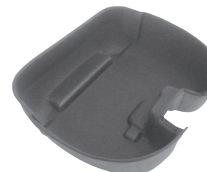


bottom layer

V36 Wizard



top layer



bottom layer