

HT660e Rugged Handheld Terminal

- HT660e -



User's Manual

400831G Version 1.0

About This Manual

This manual explains how to install, operate and maintain the HT660e Rugged Enterprise Terminal.

No part of this publication may be reproduced or used in any form, or by any electrical or mechanical means, without permission in writing from the manufacturer. This includes electronic or mechanical means, such as photocopying, recording, or information storage and retrieval systems. The material in this manual is subject to change without notice.

© Copyright 2011 Unitech Electronics Co., Ltd. All rights reserved.

Unitech global website address: <http://www.unitech-adc.com>

Bluetooth is a registered trademark of Bluetooth SIG.



Microsoft, Windows and ActiveSync are either registered trademarks or trademarks of Microsoft Corporation. Other product names mentioned in this manual may be trademarks or Registered trademarks of their respective companies and are hereby acknowledged.



Unitech is a member of Oracle Embedded Software Licensing Program.

Regulatory Compliance Statements

FCC Warning Statement

This equipment has been tested and found to comply with the limits for a Class B digital device, pursuant to part 15 of the FCC rules. These limits are designed to provide reasonable protection against harmful interference in a residential installation. This equipment generates, uses and can radiate radio frequency energy and, if not installed and used in accordance with the instructions, may cause harmful interference to radio communications. However, there is no guarantee that interference will not occur in a particular installation. If this equipment does cause harmful interference to radio or television reception, which can be determined by turning the equipment off and on, the user is encouraged to try to correct the interference by one or more of the following measures:

- Reorient or relocate the receiving antenna.
 - Increase the separation between the equipment and receiver.
 - Connect the equipment into an outlet on a circuit different from that to which the receiver is connected.
 - Consult the dealer or an experienced radio/TV technician for help.
1. This Transmitter must not be co-located or operating in conjunction with any other antenna or transmitter.
 2. This equipment complies with FCC RF radiation exposure limits set forth for an uncontrolled environment. To maintain compliance with FCC RF exposure compliance requirements, avoid direct contact to the transmitting antenna during transmitting.
 3. Any changes or modifications (including the antennas) made to this device that are not expressly approved by the manufacturer may void the user's authority to operate the equipment.

FCC Label Statement

This device complies with part 15 of the FCC rules. Operation is subject to the following two conditions:

1. This device may not cause harmful interference, and
2. This device must accept any interference received, including interference that may cause undesired operation.

Canadian Compliance Statement

This Class B Digital apparatus meets all requirements of the Canadian Interference-Causing Equipment Regulations.

Cet appareil numérique de la classe B respecte les exigences du Règlement sur le matériel brouilleur du Canada.

European Conformity Statement

Declaration of Conformity with Regard to the R&TTE 1999/5/EC and EMC 89/336/ EEC directives.

RoHS Statement



This device conforms to RoHS (Reduction Of Hazardous Sub-stances) European Union regulations that set maximum concentration limits on hazardous materials used in electrical and electronic equipment.

Taiwan NCC Warning Statement

交通部電信總局低功率電波輻射性電機管理辦法 (930322)

根據交通部低功率管理辦法規定：

第十二條 經型式認證合格之低功率射頻電機，非經許可，公司、商號或使用者均不得擅自變更頻率、加大功率或變更原設計之特性及功能。

第十四條 低功率射頻電機之使用不得影響飛航安全及幹擾合法通信；經發現有幹擾現象時，應立即停用，並改善至無幹擾時方得繼續使用。前項合法通信，指依電信法規定作業之無線電通信。

低功率射頻電機須忍受合法通信或工業、科學及醫療用電波輻射性電機設備之幹擾。

SAR標準值_____；送測產品為_____

為減少電磁波，請妥適使用

RF Radiation Exposure Statement:

For body worn operation, this phone has been tested and meets FCC RF exposure guidelines when used with an accessory that contains no metal and that positions the handset a minimum of 1.5 cm from the body. Use of other accessories may not ensure compliance with FCC RF exposure guidelines.

Laser Information

The Unitech HT660e series is certified in the U.S. to conform to the requirements of DHHS/CDRH 21CFR Subchapter J and to the requirements of IEC 825-1. Class II and Class 2 products are not considered to be hazardous. The HT660e series contains internally a Visible Laser Diode (VLD) whose emissions do not exceed the maximum limits as set forth in the above regulations. The scanner is designed so that there is no human access to harmful laser light during normal operation, user maintenance or during prescribed service operations.

The laser safety warning label required by the DHHS/IEC for the HT660e series' optional laser scanner module is located on the memory compartment cover, on the back of the unit.

CAUTION! Use of controls or adjustments or performance of procedures other than those specified herein may result in hazardous laser light. Use of optical instruments with the scanner will increase eye hazard. Optical instruments include binoculars, microscopes, and magnifying glasses. This does not include eyeglasses worn by the user.

Battery Notices

The HT660e is equipped with a Lithium-Ion battery pack and backup battery. Both batteries will discharge after an extended period of not being used.

When both batteries are discharged, recharge the unit for 12 hours in order to fully charge the main battery and backup battery. Recharge the HT660e through the following:

1. Plug the USB charging cable to the HT660e and plug the 5V/2A AC-DC adapter to the power jack of the USB charging cable.
2. Place the HT660e into the cradle and plug the 5V/2A AC-DC adapter to the power jack of the cradle.

If the main battery is removed, the backup battery ensures the data on SDRAM is safe for up to 72 hours. To prevent data loss, do not leave the HT660e uncharged with the main battery removed for an extended period. See *First Time to Charge the Main Battery & Backup Battery* on page 9 for more details.

Note: Rechargeable batteries are advised to replace every year or when 500 charge/discharge cycles achieved to guarantee optimal performance. It is normal that the battery balloons or expands beyond one year or the maximum of 500 cycles. Although it does not cause harm, it cannot be used again and must be disposed of according to the location's safe battery disposal procedures.

If the performance decrease is greater than 20% in a Lithium-Ion battery, the battery is at the end of its life cycle. Do not continue to use, and ensure the battery is disposed of properly.

The length of time that a battery power lasts depends on the battery type and how the device is used. Conserve the battery life through the following:

- Avoid frequent full discharges because this places additional strain on the battery. Several partial discharges with frequent recharges are better than a deep one. Recharging a partially charged lithium-Ion battery does not cause harm because there is no memory.
- Keep the lithium-Ion battery cool. Avoid a hot car. For prolonged storage, keep the battery at a 40% charge level.
- Do not leave the lithium-Ion battery discharged and unused for an extended period because the battery will wear out and the longevity of the battery will be at least shorter than half of the one with frequent recharges.

Battery charge notice

It is important to consider the environment temperature whenever the Lithium-Ion battery pack is charged. Charging is most efficient at normal room temperature or in a slightly cooler environment. It is essential that batteries are charged within the stated range of 10°C to 45°C. Charging batteries outside of the specified range could damage the batteries and shorten their charging life cycle.

CAUTION! Do not charge batteries at a temperature lower than 0°C, which will increase the internal resistance to cause heat and make the batteries unstable and unsafe. Please use a battery temperature detecting device for a charger to ensure a safe charging temperature range. Further, to protect and avoid battery from

inflating, the battery is detected for thermal protection and will not be charged when the temperature of battery is over 50 degrees.

Do not leave the terminal for a long time in the charging cradle and do not charge the battery with a cable long, which will shorten the battery life and cause battery expanding/ballooning. The unit should not be subject to very high temperature, excessive moisture, and direct heat. Avoid the battery from being fully charged and staying in a high temperature environment. Avoid terminal or spare battery from staying in a hot vehicle. For prolonging the storage time, keep the battery at a 40% charge level. Lithium ion batteries oxidize least when they are stored at the state of 40% charge.

Storage and safety notice

Although charged Lithium-Ion batteries may be left unused for several months, their capacity may be depleted due to build up of internal resistance. If this happens they will require recharging prior to use. Lithium-Ion batteries may be stored at temperatures between -20°C to 60°C, however they may deplete more rapidly at the higher temperature ranges. It is recommended to store batteries within normal room temperature ranges.

Warranty

The following items covered under Unitech Limited Warranty are free from defects during normal use:

- Terminal is covered by 1-year limited warranty.
- Cradle is covered by 1-year limited warranty.
- Cable is covered by 1-year limited warranty.
- Battery is covered by 3-month limited warranty.

Warranty becomes void if equipment is modified, improperly installed or used, damaged by accident or neglect, or if any parts are improperly installed or replaced by the user.

Use only the adapter supplied. Using the wrong adapter may damage the unit and will void the warranty.

Table of Contents

Preface	i
About This Manual	i
Regulatory Compliance Statements.....	ii
FCC Warning Statement	ii
FCC Label Statement	ii
Canadian Compliance Statement	iii
European Conformity Statement.....	iii
RoHS Statement.....	iii
Taiwan NCC Warning Statement	iii
Laser Information.....	iv
Battery Notices	iv
Battery charge notice.....	v
Storage and safety notice	vi
Warranty	vi
Table of Contents.....	vii
Chapter 1	1
Getting Started	1
Introducing the HT660e	1
Notice	1
Warranty	2
Regulatory	2
HT660e Model Specification	3

HT660e Product Introduction & Accessory Kit	4
HT660e Front View	5
HT660e Rear View	6
First Step with HT660e	7
Switch On Backup Battery	7
Install the Battery Pack	7
Supply Power to the HT660e	8
Charge the Battery for the First Time	8
Protective Screen Film	9
First Time Use of the HT660e	9
Setting the Time Zone	10
Setting Date/Time	10
Chapter 2	11
Using the Keypad and Scanner	11
Keypad	11
HT660e HotKey	12
Software Keyboard (Windows CE Keyboard)	13
Opening the Windows CE Keyboard	13
Other Character Support from WinCE Keyboard	13
Bar Code Scanner	13
Chapter 3	14
Power system	14
Charging the Lithium-Ion Battery Pack	14
Charging the Main and Backup Battery for the First Time	14
Environment Consideration for Charging	15

Power Status Indication	15
“Backup Battery Low” Icon.....	15
Charging the Lithium-Ion Battery Pack	15
Storage and Safety Precautions	16
Backlight Setting	17
Warm Boot / Cold Boot	17
Warm Boot.....	17
Warm Boot via Software	18
Warm Boot via Hardware.....	18
Cold Boot.....	18
Cold Boot via Software	19
Chapter 4	20
Data Communication	20
Introduction	20
Connecting.....	20
Serial or USB Cable.....	20
Cradle	21
Using ActiveSync.....	21
Installation.....	22
Using the Mobile Devices Window.....	24
Changing Communications Settings.....	25
Wireless Communication	25
Bluetooth Setup	26
Bluetooth ActiveSync.....	26
WiFi Connection	28

Bluetooth Connection	34
Appendix	43
Worldwide Support.....	43

Getting Started

Introducing the HT660e

The HT660e is a rugged, compact and ergonomic handheld terminal powered by the WinCE. NET OS to make your work more efficient and profitable. It comes with an integral barcode scanning laser device, color LCD with touch screen, keypad, BT and wireless communication interface capability. It provides the user with a standard Windows-based environment for customization and operation.



The following HT660e Product Reference Guide provides simple step-by-step procedures to give you hands-on experience with your HT660e. For programming your HT660e, please refer to our SKD and programming manual.

Notice

1. This unit is equipped with a battery pack and backup battery. It is possible that the Unitech HT660e may not be powered ON due to battery discharge as a result of storage. In the above situation and the first-time use, plug the HT660e to the charging cable or charging cradle (with 5V/2A AC-DC adapter), and charge the unused unit for over 12 hours in order to fully charge its backup battery as well.
2. Under normal condition, the back-up battery will be charged from external power or the main battery (if the main battery still has enough power to turn on). If it is charged for the first time, the back-up battery will be fully charged while main battery is charged fully.

Warranty

Unitech's Limited Warranty provides for different warranty periods for different parts and accessories:

- Terminal is covered by 1-year limit warranty.
- Cradle is covered by 1-year limit warranty.
- Cable is covered by 1-year limit warranty.
- Battery is covered by 3-month warranty.

Regulatory

Compliance with RoHS

Certificate includes: CB, CE, CCC, FCC, BSMI, TELEC, VCCI

HT660e Model Specification

System	CPU Processor	Samsung 6410 / 667mHz
	Operating System	Microsoft Windows CE 6.0 R3 Professional/Core
	Flash ROM	256MB
	MDDR	128MB
Keypad	Full Alphanumeric	36 keys
Enclosure	Weight (g)	360g (with Battery)
	Dimension (LxWxH mm)	199.5 X 79 X 39.6mm (Approximately)
Power source	Main Battery Type	3.7V / 2000mAH Li-ion, 8.14WH
	Battery Recharging Time	4 hrs.
	Battery Life	BT / WiFi disabled → 8 hours BT ON / WiFi OFF → 7 hours BT OFF / WiFi ON → 4 hours
	Backup Battery Type	120AH Li-polymer
Display	QVGA 240*320 Color 2.8" TFT LCD display with touch screen	
Cradle	USB or Modem	
Barcode Scanner Reader	1D Laser	
Rugged/Environment	Drop	1.5M
	IP Rating	IP 54
	Operation Temp.	14°F to 122°F (-10°C to 50°C)
	Storage Temp.	-4°F to 140°F (-20°C to 60°C)
	Humidity	5%~95% non-condensing
	ESD	Contact ± 8KV, Air ± 12KV
Communications	USB V1.1 Client, PAN Bluetooth V2.1 Class II, WLAN 802.11 b/g (Optional CCX4 certified radio), and Ethernet Cradle	
Expansion Slot	Supporting SD/SDHC memory up to 16GB	
Radio Options	802.11b/g	
	Bluetooth	

HT660e Product Introduction & Accessory Kit

	
HT660e Terminal	Manual CD
	
Communication Cable	Battery
	
Adaptor Kit	Hand Strap
	
Stylus Holder	

HT660e Front View



HT660e Rear View



First Step with HT660e

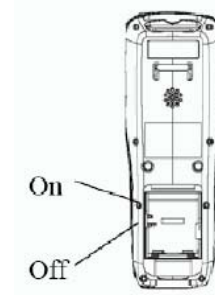
Before first using the HT660e, please ensure the battery is fully charged. There are three ways to charge your HT660e:

- Cradle with one battery charger slot
- USB/Charging cable
- Rechargeable Lithium-Ion battery pack

NOTE: Data loss may occur if the HT660e's backup battery is not adequately charged. Before charging the main battery, make sure the backup battery switch is ON.

Switch On Backup Battery

Before installing a battery, locate the backup battery switch inside the battery compartment on the left-hand side. Please ensure that it is in the "ON" position before charging the main battery.



Install the Battery Pack

1. Remove the battery cover.
2. Move the backup battery switch to the ON position (see the description above).
3. Insert the battery pack so that the contacts on the battery pack line up with the contacts in the battery compartment. Fully seat the battery.



4. Cover the battery.



Supply Power to the HT660e

Connect the USB/Charging Cable to the HT660e and connect the AC adapter to the cable's power jack and an electrical outlet.

Or place the HT660e into the Cradle (first connect the power supply to the Cradle).

Charge the Battery for the First Time

We would like to propose to charge the battery at least up to 12 hours for the first time to use. While it normally only takes about 4 hours to charge the battery after it's been drained, when charging the battery for the first time please allow at least 16 hours. While charging the main battery the backup battery should also be charged. Please make sure the backup battery has been switched "ON" (this cannot be emphasized enough).

CAUTION: There is a high risk of data loss from RAM if the backup battery is not fully charged. This can happen if the main battery has been drained and the unit is not connected to the AC adaptor. For this reason, it is crucial that the backup battery is switched on before charging the main battery for the first time.

Protective Screen Film

To protect screen, the HT660e has been provided with a protective plastic film. You may remove it (if required). The screen will be more susceptible to scratching without the film, but will be more readable.

First Time Use of the HT660e

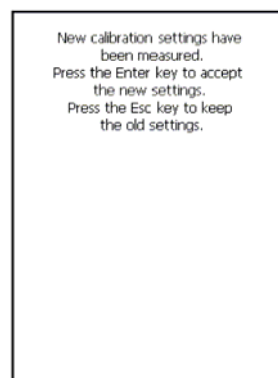
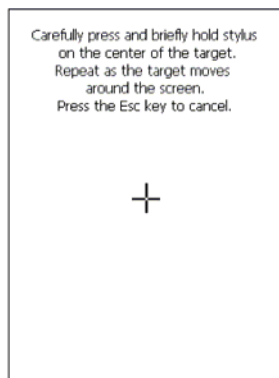
Pressing the Power ON/OFF Key

The Unitech HT660e welcome screen appears. The Windows CE screen will appear shortly thereafter.

Align the Screen

When prompted, use the stylus to tap the targets as they appear in order to align the touch screen.

When you complete the procedure, press any key or press anywhere on the touch screen to start up the WinCE system.

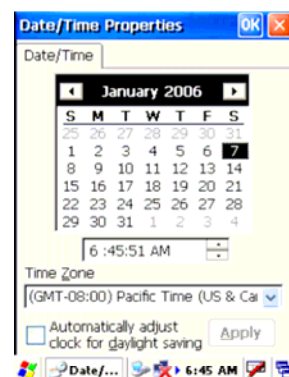


Adjusting Screen Brightness

To adjust the original default setting of the screen brightness, the backlight setting will be required. Please refer to the setting section below for the new setting procedure.

Setting Time Zone/ Date

Before using the HT660e please take a few minutes to set the time and date so that data can be properly time-stamped.

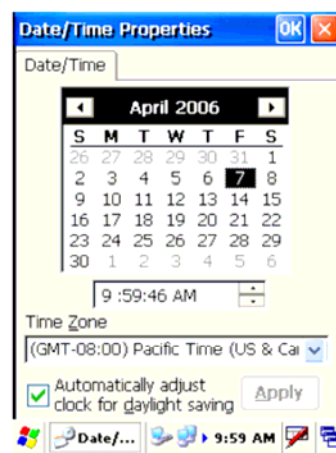


Setting the Time Zone

Follow the steps below to set up your time zone.

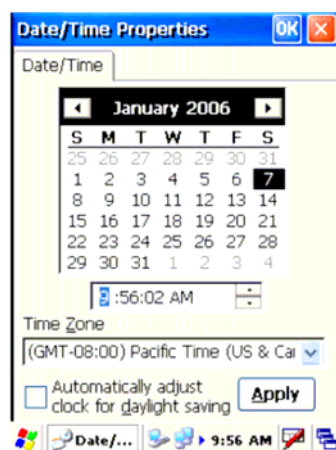
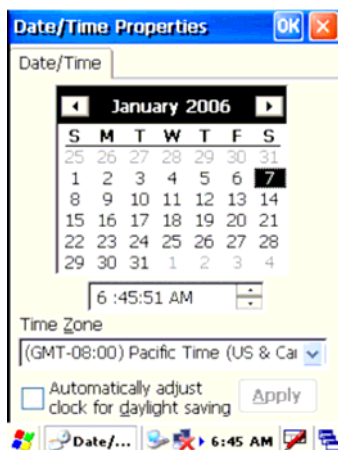
1. Tap the location arrow to see a list of cities.
2. Choose your location (or nearest listed one).
3. Select the Daylight Savings Time check box, if necessary.
4. Tap the Apply button.

If you would like the terminal automatically adjust clock for daylight saving, please tick on it.



Setting Date/Time

Tap the Left or Right arrows to scroll the year and month you desire. Or, directly tap location of year or month to change the year or month setting. To set up time, tap on the Hr/Min/Sec AM/PM to input the Hr/Min/Sec



Using the Keypad and Scanner

Keypad

Data can be entered via its 36-key keypad, which includes: 0~9, alpha, function, escape, backspace, enter, scanner trigger, cursor, and on/off keys.



[ENT] The "Enter" key confirms data entry.

[FUNC] The Function Key is used in conjunction with specific number keys to operate as Hotkeys (see next page).

[Bksp] The backspace key erases the character to the left of the cursor.

- [ESC]** The escape key returns the user to a previous page.
- [TAB]** The Tab key moves the cursor to the next tab or next control on a form.
- [Cursor]** The cursor key moves the cursor around the screen.
- [Alpha]** The Alpha key toggles Alpha mode and Caps mode. First press of the Alpha key turns the HT660e's keys to input alpha characters, indicated by a **blue** LED light. A second press turns the input to upper-case characters, indicated by a **green** LED. A third press returns the HT660e to numeric input.

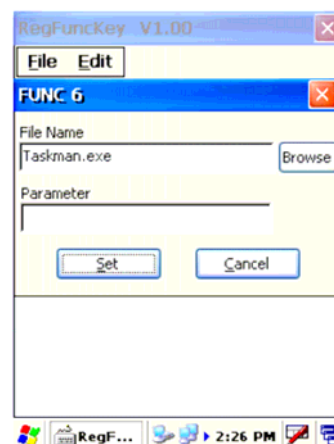
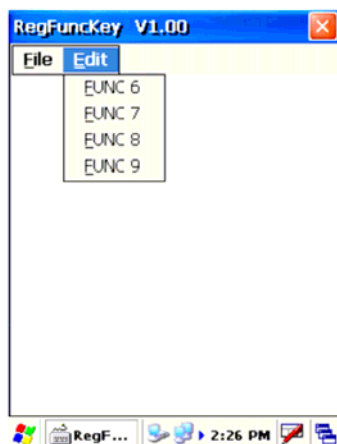
HT660e HotKey

The HT660e provides hotkeys for frequently used functions. Press the Function key and the appropriate numeric key for the following functions listed below:

- Func 6 = Task Manager
- Func 7 = Scanner Setting
- Func 8 = Power Properties
- Func 9 = System Info

Hotkeys can be modified to suit the user's preferences. To modify hotkeys, please follow the path below:

Path: My computer/Windows/RegFuncKey.exe

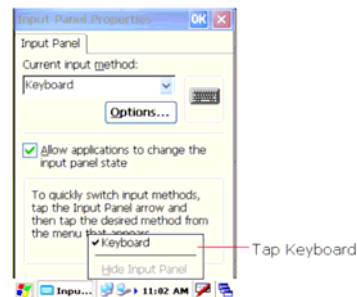


Software Keyboard (Windows CE Keyboard)

Besides its hardware keypad, the HT660e provides a touchscreen keyboard as an alternative method of character input. This software keyboard replicates the layout of a standard PC keyboard.

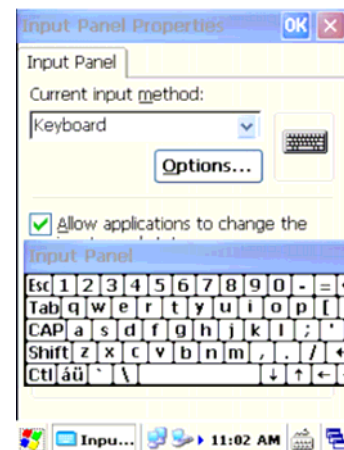
Opening the Windows CE Keyboard

The Windows CE keyboard can be opened by tapping the “keyboard” icon on the task bar. (Refer to picture).



Other Character Support from WinCE Keyboard

In addition to standard keyboard input, the HT660e supports special European character and symbol input. To enter these characters, tap the [áü] key on the touch screen keyboard to display the available characters.



Bar Code Scanner

The HT660e has an integrated 1D laser bar code scanner (depending on model number) capable of reading all major bar code labels.

Power system

Charging the Lithium-Ion Battery Pack

The HT660e's batteries can be charged via the USB or serial communication cable, or via the optional cradle - both using the included AC adaptor. Please charge the battery for at least 4 hours per session to ensure a full charge. Please note that the first time charge should be for at least 12 hours (see the description below).

Charging the Main and Backup Battery for the

First Time

When first charging the HT660e, please allow at least 12 hours to fully charge both the main and backup batteries. When the HT660e arrives from the factory the backup battery switch is in the OFF position in order to protect the backup battery. Before first charging the HT660e, make sure the backup battery switch is moved to the ON position. The backup battery switch can be found inside the main battery compartment. Data loss can occur if the backup battery is not adequately charged - therefore it is imperative to ensure that the backup battery switch is in the ON position before charging for the first time.

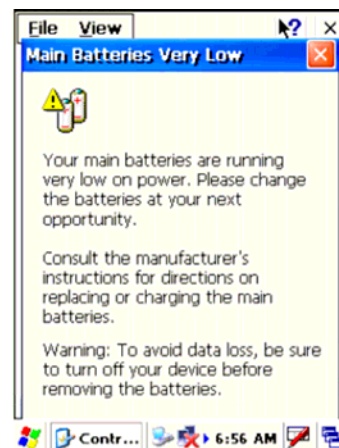
A fully charged backup battery can store data for up to 72 hours without power from the main battery. This is not recommended. Please make sure an adequately charged main battery or AC power is presented and try not to rely on the backup battery for other than unusual or emergency situations. To prevent data loss due to backup battery failure (always a slim possibility), please minimize the amount of time that the backup battery has to operate without the main battery pack installed or while disconnected from AC power.

Environment Consideration for Charging

It is important to consider the environment temperature whenever you are charging the Lithium-Ion battery pack. The process is most efficient at normal room temperature or slightly cooler. It is essential that you charge batteries within the stated range of -5°C to 50°C. Charging batteries outside of the specified range could damage the batteries and shorten their charging life cycle.

Power Status Indication

When the "Main Batteries Very Low" icon appears, charging the main battery pack as soon as possible is highly recommended in order to avoid system shutdown at an awkward moment.



“Backup Battery Low” Icon

When the "Backup Battery Low" icon appears, it indicates that the backup battery is low and needs to be charged.

Charging the Lithium-Ion Battery Pack

Automatic shutdown of the HT660e

The HT660e will enter idle mode when there is no task, or all tasks are waiting for input. In default setting, the HT660e will automatically turn itself off if it remains idle for 3 minutes and when there is no external charging power applied. Pressing the power button will return the HT660e to the same point at the time of automatic shutdown.

Do not leave the terminal for a long time in the charging cradle and do not charge the battery with a cable long, which will shorten the battery life and cause battery expanding/ballooning. The unit should not be subject to very high temperature, excessive moisture, and direct heat. Avoid the battery from being fully charged and staying in a high temperature environment. Avoid

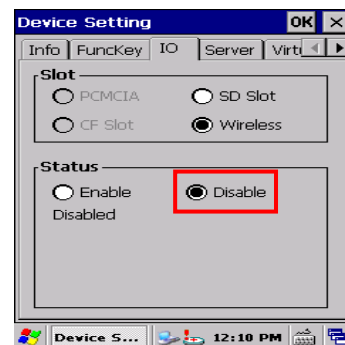
terminal or spare battery from staying in a hot vehicle. For prolonging the storage time, keep the battery at a 40% charge level. Lithium ion batteries oxidize least when they are stored at the state of 40% charge.

To save the battery power, it is better to turn off wireless mode. Please follow the steps below to turn off the wireless mode

Tap **Setting** → **Control Panel** → **Device Setting** to enter the **Device Setting** zone.



Move to the **IO** tab and select **Disable** to disable the wireless mode.



Storage and Safety Precautions

Batteries should be stored in an open environment and placed where there is no risk of accidental shorting or other damage. Although charged Li-Ion batteries may be left unused for several months, their capacity may be reduced due to back up and internal resistance. If this happens they will require recharging prior to use. Li-Ion batteries may be stored at temperatures between -4°F and 158°F (-20°C to 70°C).

Backlight Setting

The backlight for color display is user-defined. There are two tabs – one for Battery Power and the other for External Power.

Field	Description
Dim Backlight if	Select how many minutes you want to elapse before the backlight dims.
Turn Off Backlight if	Select how many minutes you want to elapse before the backlight automatically turns off.
Turn on Backlight	Select this option if you want the backlight to turn on when the button is pressed or the touch screen is tapped.



Warm Boot / Cold Boot

Warm Boot

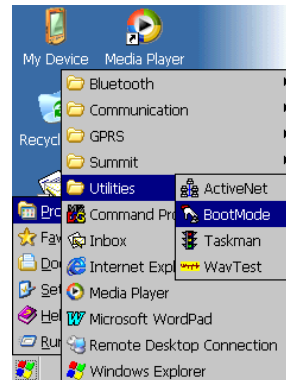
Warm Boot is a reset to re-boot the HT660e without losing saved data. Perform a warm boot when:

- The terminal fails to respond.
- After installing some software applications
- After making changes to certain system settings, such as network cards

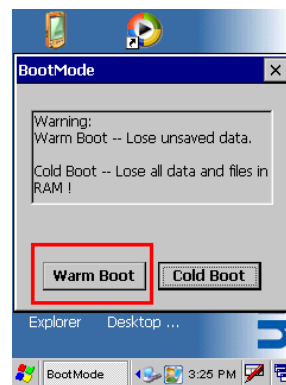
WARNING - Performing a Warm Boot will result in the loss of all unsaved data!

Warm Boot via Software

Tap **Start** → **Programs** → **Utilities** → **BootMode**.



Tap **“Warm Boot”**. The system will be warm started.



Warm Boot via Hardware

Use a blunt pin (like an unfolded paper clip) to stab the warm-boot pinhole located on the front of the HT660e, below the keypad.



warm-boot pinhole

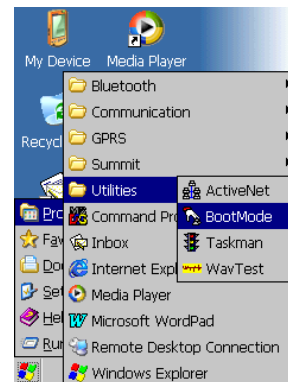
Cold Boot

A Cold Boot is used to reset the operating system, restore the terminal back to factory default, and reset the terminal after a bootloader, keyboard, or kernel upgrade.

WARNING - Performing a Cold Boot will return the HT660e to its original factory settings!

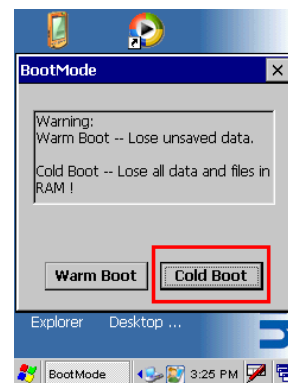
Cold Boot via Software

Tap **Start** → **Programs** → **Utilities** → **BootMode**.



Tap “Cold Boot”. The system is reset and you will lose all data including all files in the RAM memory.

You will need to recalibrate the screen and reset the date and time.



Cold Boot via Hardware

1. Remove the Main Battery.
2. Switch OFF the Backup Battery.
3. Switch the Backup Battery back ON.
4. Insert the Main Battery.
5. The terminal will be cold started and reset back to factory default.
6. Recalibrate the screen and reset the date and time.

Data Communication

Introduction

The Unitech HT660e allows users to link to a host computer via USB, Bluetooth, or Wireless connection for data communication.

This chapter provides an overview of the communication of the HT660e. The following subchapters cover these topics:

- “Series or USB or Modem” communication via cable or cradle
- “RF Communication” for details about wireless communication between the HT660e and host computers
- “Microsoft ActiveSync” for details about serial communication via USB port

Connecting

Serial or USB Cable

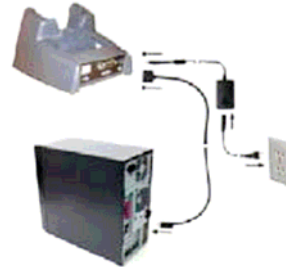
Plug the USB end of the HT660e communication cable into your PC's USB port, and the other end into the HT660e's communication port. To simultaneously charge the HT660e, plug the AC power adaptor into the power jack of the USB cable.



Cradle

USB Cradle

For data transmission, plug one end of your HT660e's USB communication cable into your PC's USB Port and the other end into the HT660e Cradle's USB port. To simultaneously charge the HT660e, plug the AC power adaptor into the power receptacle on the Cradle.



Ethernet Cradle

For data transmission, plug telephone line to the RJ45 port of your HT660e cradle. To simultaneously charge the HT660e, plug the AC power adaptor into the power jack on the cradle.

Using ActiveSync

Using Microsoft ActiveSync, you can synchronize and transfer information between your desktop computer and terminal. The most current version of ActiveSync can be downloaded from www.microsoft.com.

Additional Capabilities

With ActiveSync, you can also:

- Back up and restore your device data.
- Copy (rather than synchronize) files between your device and desktop computer.
- Control when synchronization occurs by selecting a synchronization mode. For example, you can synchronize continually while connected to your desktop computer or only when you choose the synchronize command.
- Select which information types are synchronized and control how much data is synchronized. For example, you can choose how many weeks of past appointments you want synchronized.

Before beginning installation, carefully read the following:

- Because you will be restarting your computer during installation, save your work and quit all programs before you begin.
- To set up your communication settings, the HT660e serial cable is required to connect the HT660e to your host computer.
- If you run the Windows NT® operating system with a service pack, you will

be informed during setup that you may need to reinstall the service pack. Try connecting first, and if unsuccessful, reinstall the latest service pack.

Requirements

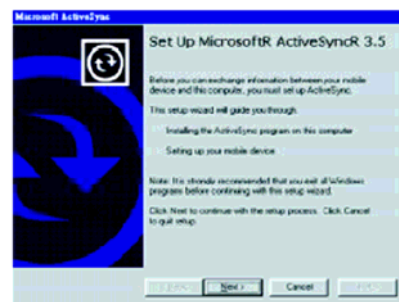
To synchronize, ActiveSync version 3.7 or higher must be installed on both your desktop computer and the HT660e terminal. The HT660e terminal is installed with ActiveSync and shipped. Therefore, you must install ActiveSync 3.7 on your desktop computer.

To install ActiveSync on your desktop computer, please link to Microsoft website to get free download driver.

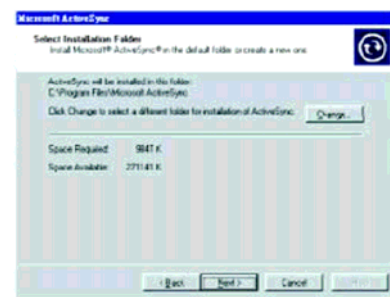
Installation

Follow the installation procedure below to install Microsoft ActiveSync, connect your HT660e to your desktop computer, and establish a partnership for synchronization, if required.

Download the executable program “msasync.exe” from the Microsoft web site at: <http://www.microsoft.com/mobile/pocketpc/downloads/activesync35.asp>. Execute this program.

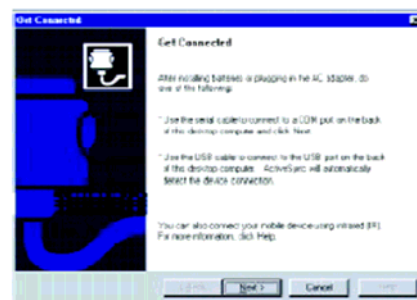


Select the folder into which Microsoft ActiveSync will be installed. If you choose not to download into the displayed default folder, click the Change button.



After you've selected the folder, click Next to set up Microsoft ActiveSync. After you've installed Microsoft ActiveSync and restarted your computer, you'll see the screen:

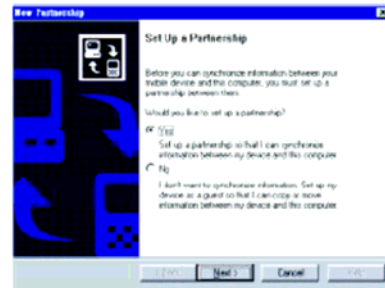
- Plug one terminal of a USB cable to a USB port of your desktop PC and connect the other terminal to the HT660e.
- Turn the HT660e ON. Click the Next



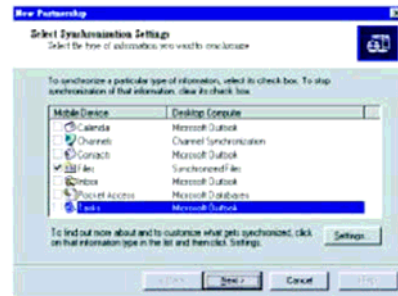
button.

Microsoft ActiveSync should recognize your HT660e and configure your communication port. If a message appears indicating that it is unable to detect a connection, click the Cancel button and manually configure the communication settings.

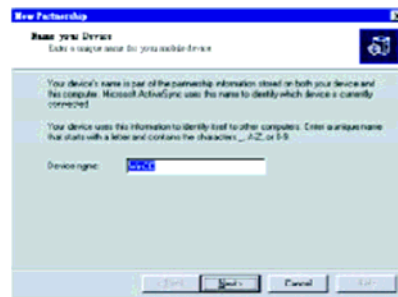
When the HT660e is initially connected to a PC, the following screen appears prompting you to set up a “Partnership”. Setting up a Partnership is required if your HT660e is to be synchronized with other computers and/or terminals. Otherwise select No.



Now select synchronization settings. Currently the HT660e can support “Synchronized Files”.

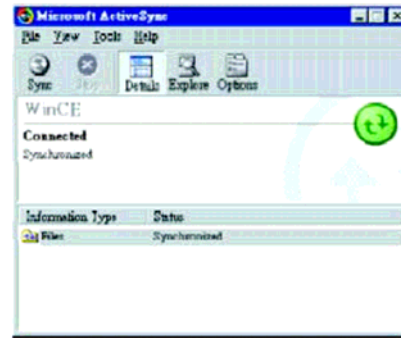


Different HT660e cannot share the same Device Name if more than one terminal is to be connected to the same PC via a “Partnership”. The default Device Name assigned to the HT660e is “WinCE”. It is important to specify a different name for each terminal if more than one terminal is to be connected to the same PC. When ActiveSync displays the following screen, assign each terminal its own unique name.



Click the Next button and follow the instructions to set up a partnership between the HT660e and your desktop computer. This partnership allows you to synchronize information between the two computers.

When the configuration process is complete, you'll see the screen.

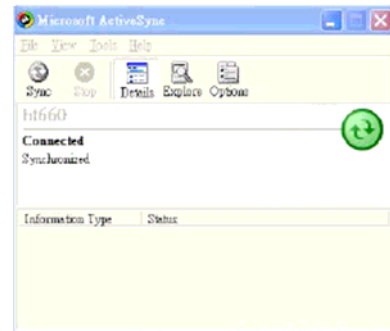


Synchronization will be initialized and will take place if you've chosen to synchronize periodically or upon connection.

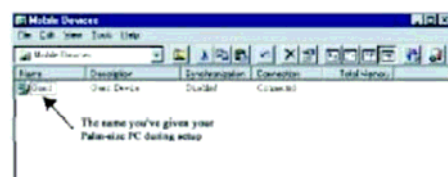
Note: Your desktop computer can create a partnership with multiple HT660e. Also, The HT660e can create a partnership with up to two desktop computers.

Using the Mobile Devices Window

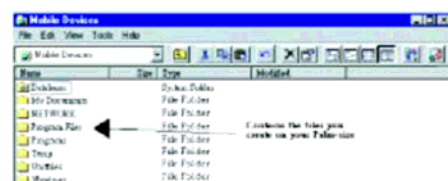
Start Microsoft ActiveSync by clicking the Microsoft ActiveSync shortcut on your desktop and then clicking the "Explore" icon.



In the displayed window, you can:
 Select your HT660e to use Microsoft ActiveSync features such as changing synchronization options, as described in the "Synchronization" section.



Open the Explorer window by double Clicking your device icon in the Mobile Devices window.



Use this window, which is the root window to the HT660e, to copy and move files between the HT660e and your desktop computer, as described in the "Synchronization" section.

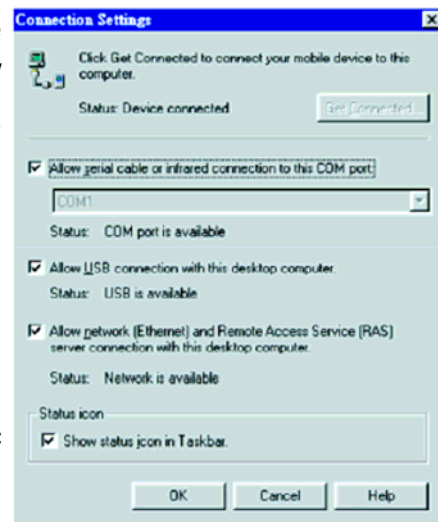
Changing Communications Settings

If Microsoft ActiveSync fails to detect the HT660e during installation, set up communications manually instead. Make sure the following conditions are met:

- Verify that the correct communications port is selected for your desktop computer and that it is free.
- Microsoft ActiveSync uses the specified communication ports to connect to the HT660e. Make sure these resources are available for Microsoft ActiveSync to connect to the HT660e. Other programs cannot use them while the HT660e and your desktop computer are connected.
- Set your baud rate on the HT660e - the desktop computer will match it.

To check communications settings, open the Mobile Devices folder, and click File / Connection Settings. The connection on the HT660e is set to USB connection by default. To adjust the connection, tap Start, Settings, Control Panel, select the Communication icon, select the PC Connection tab, and then tap the Change Connection... button.

For more information see Microsoft ActiveSync Help.



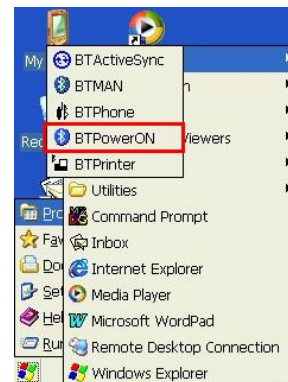
Wireless Communication

Your HT660e is equipped with built-in Bluetooth for wireless communication.

Bluetooth Setup

Tap **Start** → **Programs** → **Bluetooth** → **BTPowerON**.

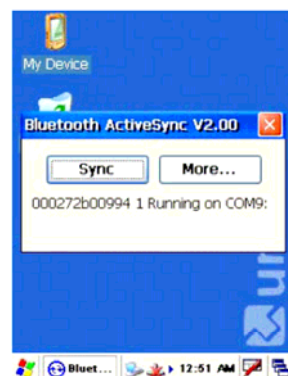
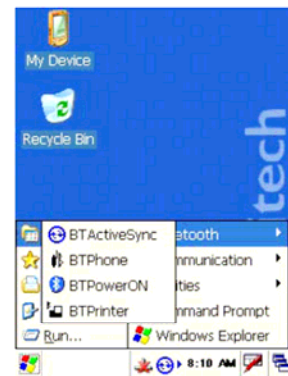
Select **Bluetooth Module Power On** and tap **OK**.



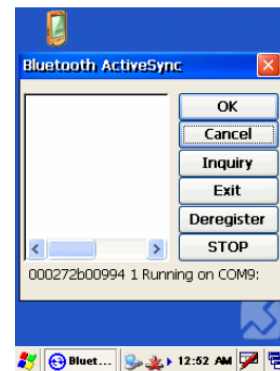
Bluetooth ActiveSync

Select **BTActiveSync** from **Communication** on the **Startup bar**.

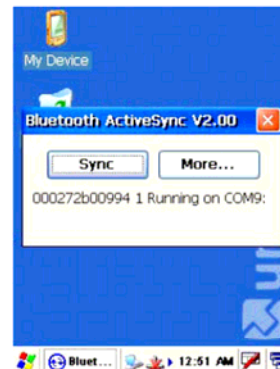
On your PC, tap the **Bluetooth** icon on the task bar. The screen to the right will appear. Select **More...**



Choose Inquiry. The inquiry process might take a few seconds. Then select the device to synchronize and tap OK.

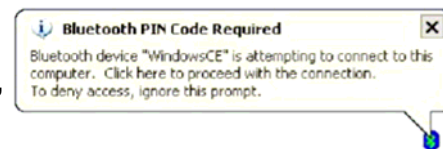


Tap the Bluetooth icon on the task bar again. Click Sync.



The message “Connecting to Bluetooth” will appear on your HT660e.

A Bluetooth security screen will appear prompting you to enter a PIN code. This PIN code can be any series of letters and numbers, and must be the same code you enter on your HT660e when prompted.



When prompted by your HT660e, enter the same PIN code that you’d entered on your PC. Once it is successfully entered, your synchronization is complete.

WiFi Connection

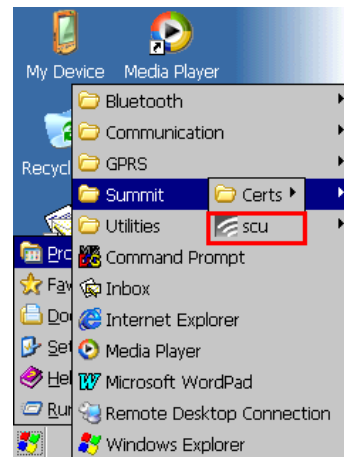
Unitech terminals come with built-in RF facility, Summit or Marvel. A wireless network can be added either when the network access point is detected or by manually entering setting data. Before following these instructions, make sure if authentication information is needed.

Using the Summit Utility

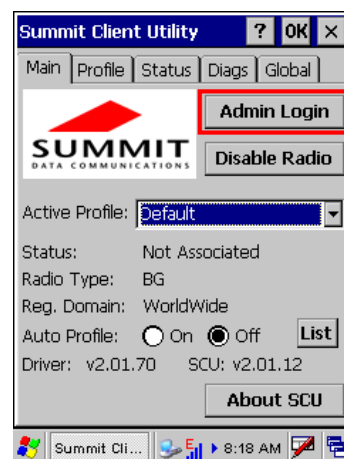
Here, you can use, for example, the Summit Client Utility tool to do or change the WiFi settings.

Admin Login

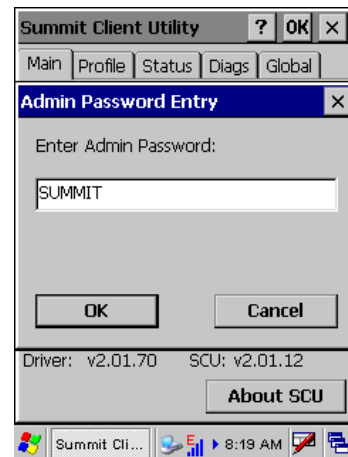
1. Tap **Start** → **Programs** → **SUMMIT** → **scu**.



2. To login as an administrator, tap **Admin Login**.

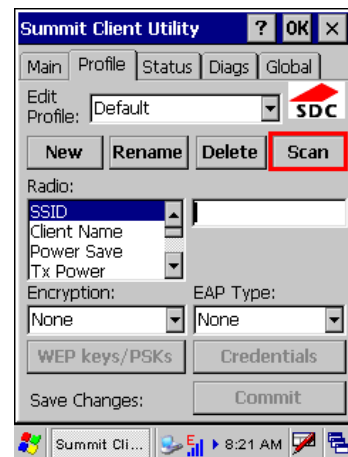


3. Enter the Admin Password. (Default pass-word: SUMMIT)

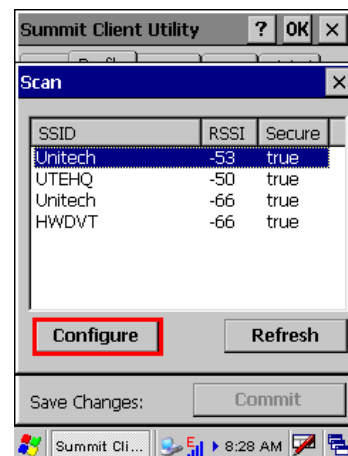


Scan Available AP

1. Under **Profile** tab, tap Scan for available AP.



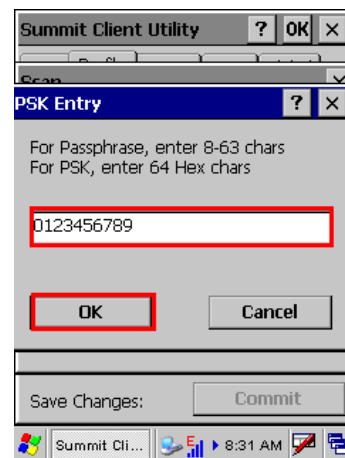
2. You may select a desired AP to create a new profile. Tap **Configure**.



3. Tap **Yes** to create the new profile.

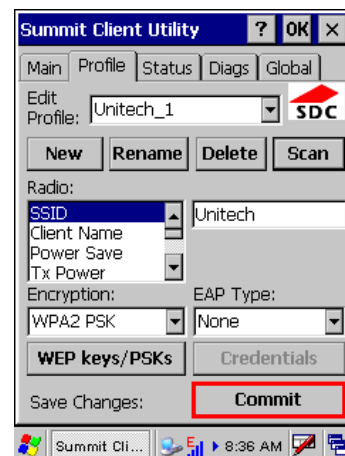


4. Enter the WEP key or network key. Tap **OK**.

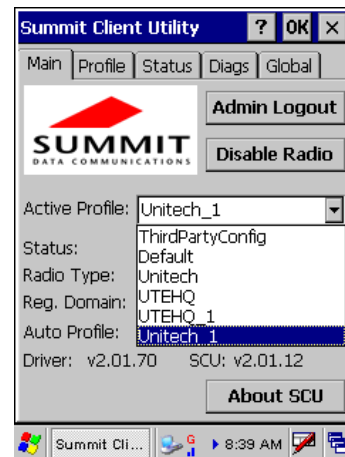


Commit and Activate

1. Tap **Commit** to activate the setting.



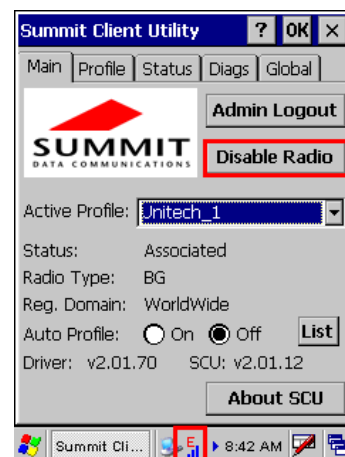
- Under **Main** tab, select the profile you want to activate.



- A pop-up window appears “A Power Cycle is required to make settings activate properly.” Tap **OK**, and then tap **OK** to exit the Summit Client Utility.
- Tap **Start** → **Programs** → **Utilities** → **Boot-Mode**. Tap **Warm Boot** to warm start the terminal and load the previous settings.
- The Summit icon on the taskbar indicating the AP is connected.

Double tap this icon to bring up Summit Control Utility. Tap **Disable Radio**, you can disconnect the AP.

Under **Status** tab, you can see the IP address, signal strength and quality.

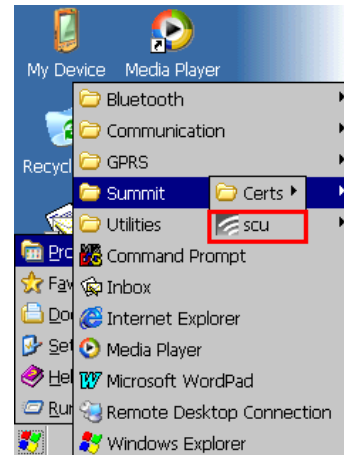


If you want to learn more detailed settings of the SUMMIT utility, please visit SUMMIT website (<http://www.summitdatacom.com/documentation.htm>).

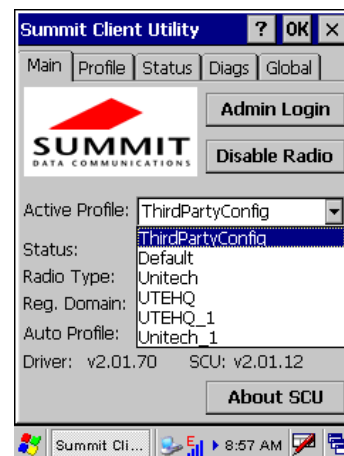
Using the Microsoft Wireless Networking Tool

Alternatively, you may use the built-in Microsoft wireless networking tool to connect to an access point.

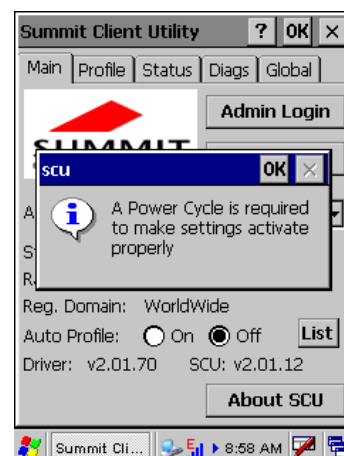
1. Tap **Start** → **Programs** → **Summit** → **scu**.



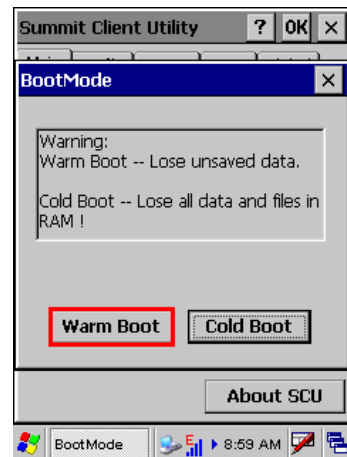
2. The Summit Client Utility window appears. Select **Third Party Config** from the drop down menu of **Active Profile**.



3. A pop-up window appears “A Power Cycle is required to make settings activate properly.” Tap **OK**, and then tap **OK** to exit the Summit Client Utility.



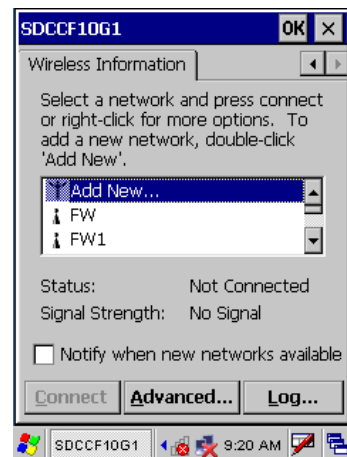
4. Tap **Start** → **Programs** → **Utilities** → **Boot-Mode**. Tap Warm Boot to warm start the terminal and load the previous settings.



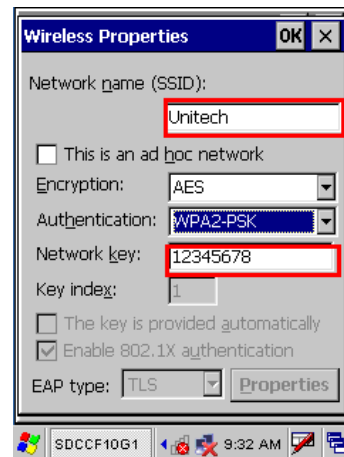
5. Tap the wireless network icon as a shortcut on the desktop.



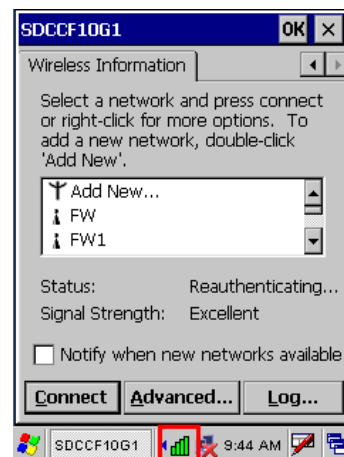
6. Tap **Add New** or double tap a preferred network.



7. Enter a Network Name (SSID) and a Network Key. For the detailed instruction on wireless network encryption setting, please visit Microsoft website.



8. The network icon appears on the taskbar when the RF is connected.

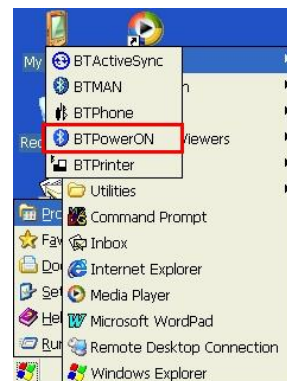


Bluetooth Connection

Your device is provided with Bluetooth wireless technology that you can use to synchronize information with a computer equipped with a Bluetooth adapter or access point. Bluetooth wireless technology allows you to communicate with the computer whenever it is within a range.

Follow these instructions below to do a Bluetooth connection.

1. Tap **Start** → **Programs** → **Bluetooth** → **BTPowerON**.



2. Check **Bluetooth Module Power ON**, and tap **OK**.



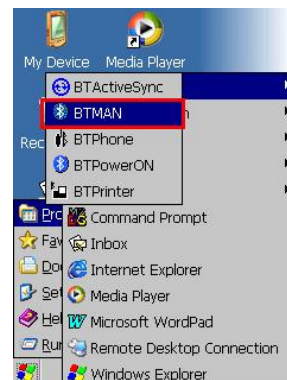
Alternatively, you may use BTMAN, which will be described, to enable the Bluetooth module.

Using BTMAN to connect and pair a Bluetooth device

After enabling the built-in Bluetooth module, you may use BTMAN to connect and pair a Bluetooth device around.

BTMAN is a Bluetooth manager gathering and managing all Bluetooth profiles you add.

Tap **Start** → **Programs** → **Bluetooth** → **BTMAN** to open the manager.



In the **Service** tab, six icons, **About**, **Power OFF/ON**, **FTP**, **ActiveSync**, and **Modem**, are arranged.

About: To show you the software version and BT module MAC address

Power OFF/ON: To enable ON or OFF the BT module

FTP: To transfer files to or receive files from a PC or terminal

ActiveSync: To synchronize with a PC

Modem: To allow you go on Internet after connecting to a cell phone as a modem

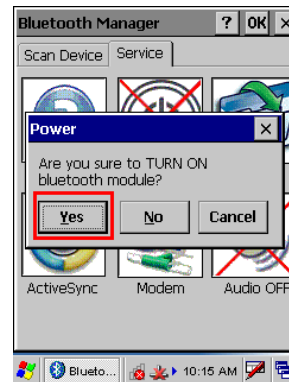


Power OFF/ON: To enable or disable paired Bluetooth earphones

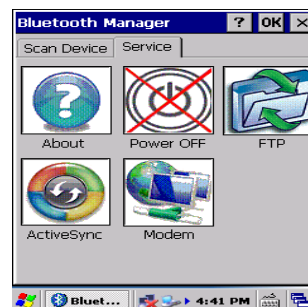
First of all, tap the **Power OFF** icon to enable the Bluetooth module.



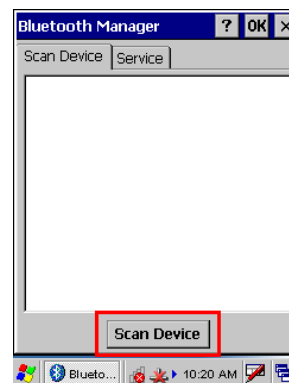
Tap **Yes** to turn ON the Bluetooth module.



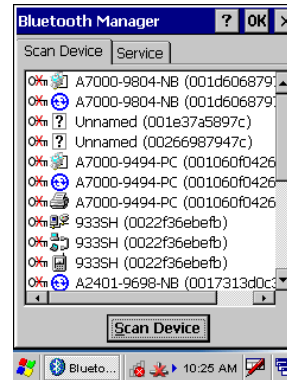
Tap the **Scan Device** tab to scan Bluetooth devices around.



Tap **Scan Device**.

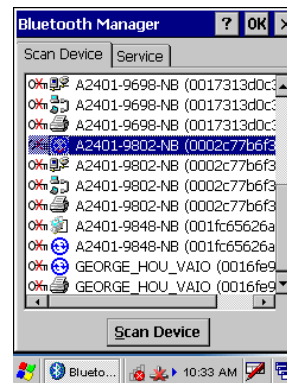


Scanned Bluetooth devices around are listed. Later, you may double tap a desired device and check Trusted and then Active.

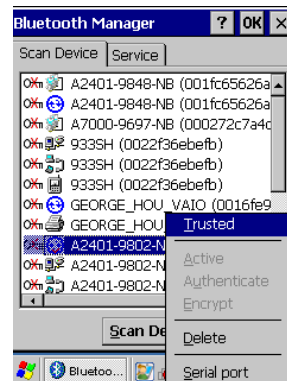


ActiveSync Between HT660e and a PC or Terminal

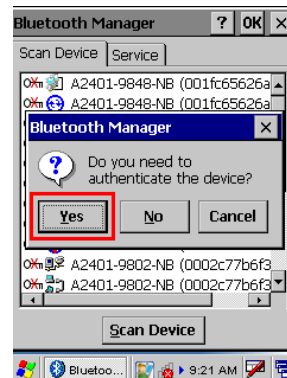
On the **Scan Device** tab, for example, select and double tap a desired PC.



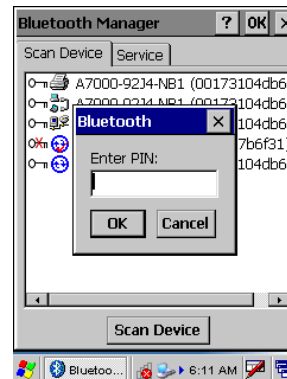
Tap **Trusted**.



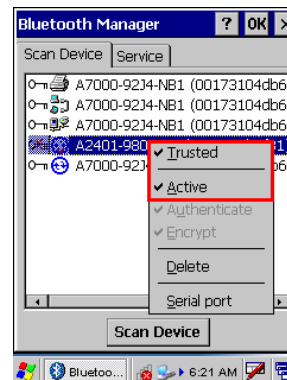
Tap **Yes**.



Enter a PIN code on the terminal and tap **OK**. Then, an Enter PIN dialog box pops up and enter the PIN code same as that you inputted on the terminal.



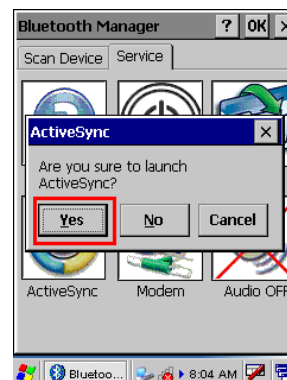
Double tap the paired PC. When the pairing is successful, **Trust** and **Active** are checked.



Move to the Service tab and tap **ActiveSync**.



Tap **Yes** to launch ActiveSync. Then, HT660e will synchronize with the desired PC by means of Bluetooth.



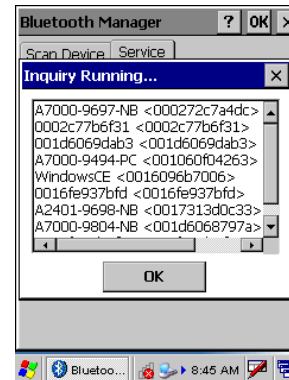
File Transfer Protocol (FTP) via Bluetooth

You may use the FTP profile to transfer files to and receive files from a PC or terminal. Please follow the instruction below to connect and pair the PC or terminal for file transfer and receiving.

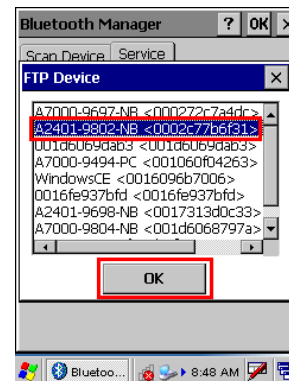
On the **Serve** tab, tap the **FTP** icon.



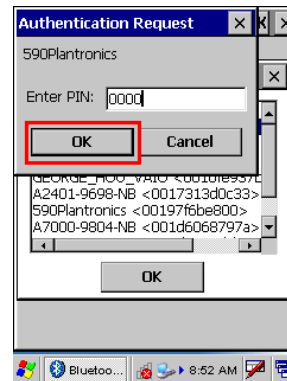
The terminal is searching for PCs and terminals that are provided with the FTP function.



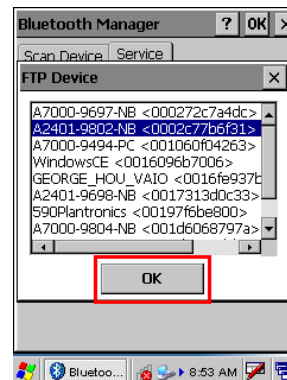
Select a device and tap **OK**.



An Authentication Request box pops up. Then, input a PIN code and tap **OK**.

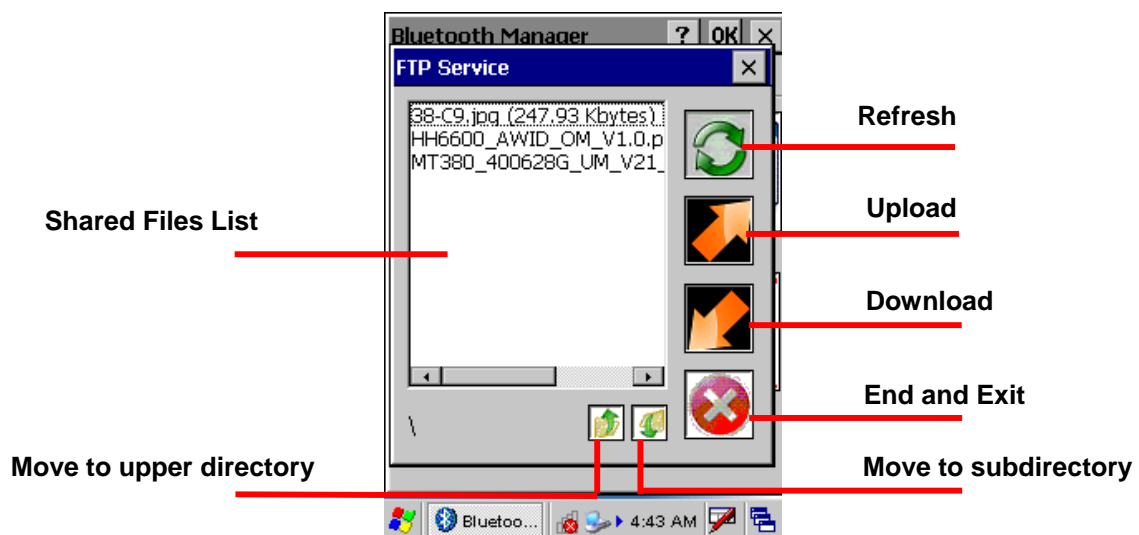


Choose a desired PC or terminal to or from which you want to transfer or receive data. Tap **OK** to confirm the connection.



Next, a dialog box pops up on the selected PC. Select and determine a path where a file or files may be transferred between HT660e and the PC.

The FTP Service zone appears. All function icons in the zone are defined below.



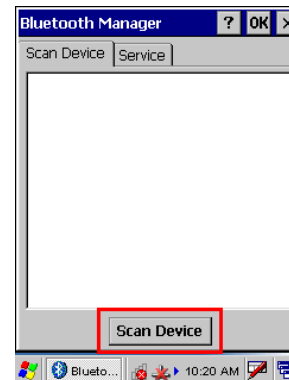
Modem

You may surf on Internet by connecting HT660e to a mobile phone that serves as a modem. Follow the instruction below to connect and pair a mobile phone with GPRS function.

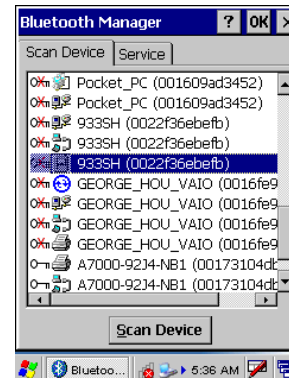
Tap the **Scan Device** tab to scan Bluetooth devices around.



Tap **Scan Device**.



Scanned Bluetooth mobile phones around are listed. Later, you may double tap a desired phone and check **Trusted** and then **Active**. Then, HT660e is successfully connect to and paired with the phone as the modem.



Appendix

Worldwide Support

Unitech's professional support team is available to quickly answer questions or technical-related issues. Should an equipment problem occur, please contact the nearest Unitech regional service representative. For complete contact information please visit the Web sites listed below:

Region	Web Site
Global Operation Center	http://www.ute.com
Unitech Taiwan	http://tw.ute.com
Unitech Asia Pacific & Middle East	http://apac.ute.com ; http://india.ute.com
Greater China Division	http://cn.ute.com
Unitech Japan	http://jp.ute.com
Unitech America	http://us.ute.com ; http://can.ute.com
Unitech Latin America	http://latin.ute.com
Unitech Europe	http://eu.ute.com