

# Always there to help you

Register your product and get support at  
[www.philips.com/welcome](http://www.philips.com/welcome)



ORD2100



Thank you for choosing Philips.

## **Need help fast?**

Read your Quick Start Guide and/or User Manual first for quick tips that make using your Philips product more enjoyable.

If you have read your instructions and still need assistance, you may access our online help at

[www.philips.com/welcome](http://www.philips.com/welcome)  
or call

**1-888-PHILIPS (744-5477)**  
**while with your product.**  
**(and Model / Serial number)**



Philips vous remercie de  
votre confiance.

## **Besoin d'une aide rapide?**

Le Guide rapide de début et Manuel de l'utilisateur regorgent d'astuces destinées à simplifier l'utilisation de votre produit Philips. Toutefois, si vous ne parvenez pas à résoudre votre problème, vous pouvez accéder à notre aide en ligne à l'adresse

[www.philips.com/welcome](http://www.philips.com/welcome)  
ou formez le

**1-800-661-6162 (Francophone)**  
**1-888-PHILIPS (744-5477) (English speaking)**

**Veillez à avoir votre produit à  
portée de main.**  
**(et model / serial nombre)**



Gracias por escoger Philips

## **Necesita ayuda inmediata?**

Lea primero la Guía rápida del comienzo o el Manual del usuario, en donde encontrará consejos que le ayudarán a disfrutar plenamente de su producto Philips.

Si después de leerlo aún necesita ayuda, consulte nuestro servicio de asistencia en línea en

[www.philips.com/welcome](http://www.philips.com/welcome)  
o llame al teléfono

**1-888-PHILIPS (744-5477)**  
**y tenga a mano el producto.**  
**(y número de model / serial)**

# User Manual

# PHILIPS

# Contents

---

|          |                               |          |
|----------|-------------------------------|----------|
| <b>1</b> | <b>Safety</b>                 | <b>3</b> |
|          | Important Safety Instructions | 3        |

---

|          |                          |          |
|----------|--------------------------|----------|
| <b>2</b> | <b>What's in the box</b> | <b>4</b> |
|----------|--------------------------|----------|

---

|          |                    |          |
|----------|--------------------|----------|
| <b>3</b> | <b>Get started</b> | <b>5</b> |
|          | Connect power      | 5        |
|          | Set clock          | 5        |

---

|          |                       |          |
|----------|-----------------------|----------|
| <b>4</b> | <b>Play</b>           | <b>6</b> |
|          | Play from iPod/iPhone | 6        |
|          | Listen to radio       | 6        |

---

|          |                              |          |
|----------|------------------------------|----------|
| <b>5</b> | <b>Other features</b>        | <b>8</b> |
|          | Set alarm timer              | 8        |
|          | Set sleep timer              | 9        |
|          | Adjust brightness            | 9        |
|          | Play from an external device | 9        |

---

|          |                            |           |
|----------|----------------------------|-----------|
| <b>6</b> | <b>Product information</b> | <b>10</b> |
|          | Specifications             | 10        |

---

|          |                        |           |
|----------|------------------------|-----------|
| <b>7</b> | <b>Troubleshooting</b> | <b>11</b> |
|----------|------------------------|-----------|

---

|          |               |           |
|----------|---------------|-----------|
| <b>8</b> | <b>Notice</b> | <b>11</b> |
|----------|---------------|-----------|

Congratulations on your purchase, and welcome to Philips! To fully benefit from the support that Philips offers, register your product at [www.philips.com/welcome](http://www.philips.com/welcome).

# 1 Safety



This 'bolt of lightning' indicates uninsulated material within your unit may cause an electrical shock. For the safety of everyone in your household, please do not remove product covering.

The 'exclamation point' calls attention to features for which you should read the enclosed literature closely to prevent operating and maintenance problems.

**WARNING:** To reduce the risk of fire or electric shock, this apparatus should not be exposed to rain or moisture and objects filled with liquids, such as vases, should not be placed on this apparatus.

**CAUTION:** To prevent electric shock, match wide blade of plug to wide slot, fully insert.

---

## Important Safety Instructions

- ① Read these instructions.
- ② Keep these instructions.
- ③ Heed all warnings.
- ④ Follow all instructions.
- ⑤ Do not use this apparatus near water.
- ⑥ Clean only with dry cloth.
- ⑦ Do not block any ventilation openings. Install in accordance with the manufacturer's instructions.
- ⑧ Do not install near any heat sources such as radiators, heat registers, stoves, or other apparatus (including amplifiers) that produce heat.
- ⑨ Protect the power cord from being walked on or pinched, particularly at plugs, convenience receptacles, and the point where they exit from the apparatus.
- ⑩ Only use attachments/accessories specified by the manufacturer.
- ⑪ Use only with the cart, stand, tripod, bracket, or table specified by the manufacturer or sold with the apparatus. When a cart is used, use caution when moving the cart/apparatus combination to avoid injury from tip-over.
- ⑫ Unplug this apparatus during lightning storms or when unused for long periods of time.
- ⑬ Refer all servicing to qualified service personnel. Servicing is required when the apparatus has been damaged in any way, such as power-supply cord or plug is damaged, liquid has been spilled or objects have fallen into the apparatus, the apparatus has been exposed to rain or moisture, does not operate normally, or has been dropped.
- ⑭ Apparatus shall not be exposed to dripping or splashing.
- ⑮ Do not place any sources of danger on the apparatus (e.g. liquid filled objects, lighted candles).
- ⑯ This product may contain lead and mercury. Disposal of these materials may be regulated due to environmental considerations. For disposal or recycling information, please contact your local



authorities or the Electronic Industries Alliance: [www.eiae.org](http://www.eiae.org).

- ⑰ Where the plug of the Direct Plug-in Adapter is used as the disconnect device, the disconnect device shall remain readily operable.

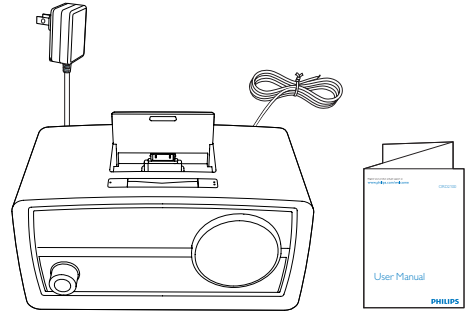


### Warning

- Keep this device away from direct sunlight, naked flames or heat.
- Ensure that you always have easy access to the power cord, plug or adaptor to disconnect the device from the power.
- Never place this apparatus on other electrical equipment.

## 2 What's in the box

Check and identify the contents of your package.



# 3 Get started

Always follow the instructions in this chapter in sequence.

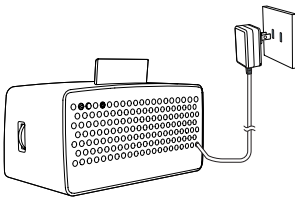
## Connect power

### ! Caution

- Risk of product damage! Make sure that the power voltage corresponds to the voltage printed on the back or underside of the unit.
- Risk of electric shock! When you unplug the power adapter, always pull the plug from the socket. Never pull the cord.

### ☰ Note

- The type plate is located at the bottom or back of this device.



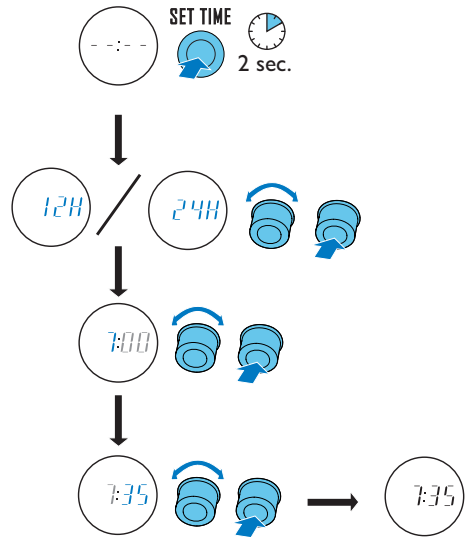
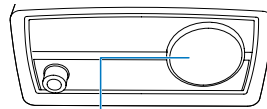
## Switch to standby mode

The device switches to standby mode in the following situations:

- Press the knob repeatedly to switch to standby mode.
- No audio input from iPod/iPhone or an external device over 15minutes.

## Set clock

- 1 In standby mode, press and hold **SET TIME** on the back of the device for two seconds. ↳ [12H] or [24H] begins to blink.
- 2 Rotate the knob to select 12/24 hour format.
- 3 Press the knob to confirm. ↳ The hour digits begin to blink.
- 4 Repeat steps 2-3 to set hour and minute.



### ☰ Note

- The device synchronizes time from iPod/iPhone automatically when iPod/iPhone is docked.

# 4 Play

## Play from iPod/iPhone

You can enjoy audio from iPod/iPhone through this unit.

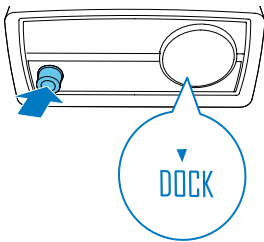
### Install HomeStudio App

Philips **HomeStudio** app brings a suite of new features to your docking system, including FM radio programming and a multi-function alarm clock. To enjoy more features, you are recommended to install this free **HomeStudio** app.

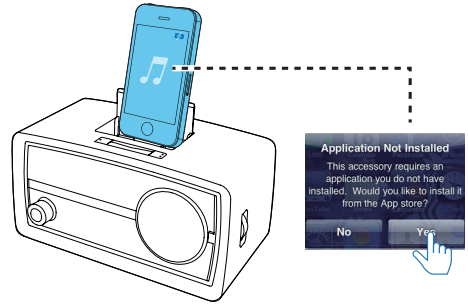
#### Note

- Make sure that your iPod/iPhone is connected to the Internet.

- 1 Press the knob repeatedly to select **[DOCK]** mode.



- 2 Insert your iPod/iPhone into the dock.  
↳ The docked iPod/iPhone begins to charge automatically.
- 3 For the first-time use, you will be asked to install the **HomeStudio** app on your iPod/iPhone.
- 4 Tap **[Yes]** (yes) to accept the installation request.
- 5 Follow the on-screen instructions to complete the installation.



- 6 Play audio on the iPod/iPhone. Philips **HomeStudio** app only can be installed in the following iPod, iPhone models:

- iPod touch (1st, 2nd, 3rd, and 4th generation)
- iPhone 4S
- iPhone 4
- iPhone 3GS
- iPhone 3G
- iPhone

## Compatible iPod/iPhone

The unit supports the following iPod, iPhone models:

Made for:

- iPod classic
- iPod touch (2nd, 3rd, and 4th generation)
- iPod nano (4th, 5th, and 6th generation)
- iPhone 4S
- iPhone 4
- iPhone 3GS
- iPhone 3G

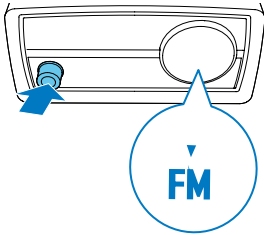
## Listen to radio

#### Note

- Keep the unit away from other electronic devices to avoid radio interference.
- For better reception, do not place iPod/iPhone into the dock when you listen to the radio. Fully extend and adjust the position of the FM antenna.

## Tune to FM radio stations

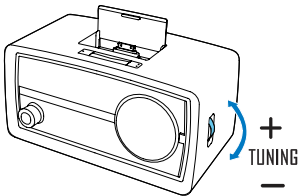
- 1 Press the knob repeatedly to choose **[FM]** mode.



- 2 Search for a radio station manually or automatically.

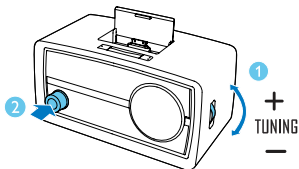
### To search for a radio station manually:

- Rotate **TUNING** to select a station.
  - ↳ The display panel shows the radio frequency of the waveband.



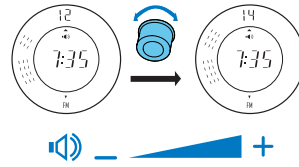
### To search for a radio station automatically:

- Press the knob within two seconds after rotating **TUNING**.
  - ↳ The radio tunes to a station with strong reception automatically.



## Adjust volume

While listening, rotate the knob to adjust volume.



# 5 Other features

## Set alarm timer

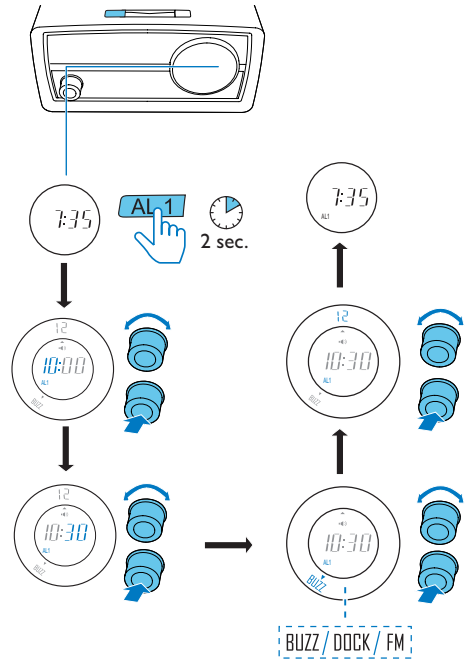
### Set alarm

#### Note

- Make sure that you have set the clock correctly.

You can set two alarms to ring at different time. Buzzer, FM radio, or your last listened audio in the iPod/iPhone can be selected as alarm sound.

- 1 Press and hold **AL1/AL2** for more than two seconds to activate alarm setting mode.
  - ↳ The current alarm time (if set) is displayed.
  - ↳ The hour digits and alarm icon begin to blink.
- 2 Rotate the knob to set the hour.
- 3 Press the knob to confirm.
  - ↳ The minute digits blink.
- 4 Repeat steps 2-3 to set minute, select an alarm source (**[BUZZ]**, **[DOCK]** or **[FM]**), and adjust the alarm volume.
  - ↳ The corresponding alarm icon lights up.



#### Tip

- If iPod/iPhone is selected as alarm source, but no iPod/iPhone is connected, the device switches to buzzer source instead.

#### Note

- For the alarm(s) set through the device, you can also select the nature sounds stored in the **HomeStudio** app as alarm sound.
- The gentle wake-up function is available for **[DOCK]** and **[FM]** source.

## Activate/deactivate the alarm timer

- 1 Press **AL1/AL2** to view alarm settings.
- 2 Press **AL1/AL2** repeatedly to select **[ON]** or **[OFF]** to activate or deactivate the alarm timer.
  - ↳ **AL1** or **AL2** appears if alarm timer is on and disappears if it is off.



- To stop alarm, press the corresponding **AL1/AL2**.
- ↳ The alarm repeats ringing for the next day.

### Note

- When alarm sounds, you cannot adjust volume by rotating the knob.



## Snooze the alarm

When alarm sounds, press **SNOOZE**.

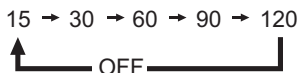
- ↳ The alarm snoozes and repeats ringing nine minutes later.

## Set sleep timer

Press **SLEEP** on the back of the device repeatedly to select the sleep time period (in minutes).

- ↳ When the sleep timer is activated, **zZ** appears.

To deactivate the sleep timer, press **SLEEP** repeatedly until **[OFF]**(off) appears.

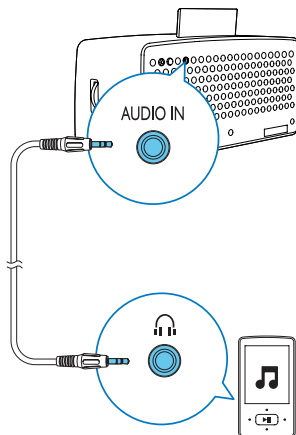


## Adjust brightness

Press **BRIGHTNESS** repeatedly to adjust the brightness of the display panel: high, medium, or low.

## Play from an external device

- 1 Connect an MP3 link cable (not supplied) to:
  - the **AUDIO IN** socket at the back of this unit.
  - the headphone socket of an external device.
- 2 Start to play the device (see the user manual of the device).



### Note

- The device switches to **AUX** mode automatically when an external device with audio output is connected.

# 6 Product information



## Note

- Product information is subject to change without prior notice.

## Specifications

### Amplifier

|                           |                    |
|---------------------------|--------------------|
| Rated Output Power        | 4W RMS             |
| Frequency Response        | 20 -20000 Hz, -3dB |
| Signal to Noise Ratio     | >67 dB             |
| Total Harmonic Distortion |                    |
| Distortion                | <1%                |
| Audio In (MP3 link)       | 0.6 V RMS 20kohm   |

### Tuner (FM)

|                           |                |
|---------------------------|----------------|
| Tuning range              | 87.5 - 108 MHz |
| Tuning grid               | 100 KHz        |
| Sensitivity               |                |
| - Mono, 26dB S/N Ratio    | <22 dBu        |
| - Stereo, 46dB S/N Ratio  | <43 dBu        |
| Search Selectivity        | >28 dBf        |
| Total Harmonic Distortion | <2%            |
| Signal to Noise Ratio     | >55 dB         |

### General information

|                  |   |
|------------------|---|
| AC power adaptor | Model:OH-1015A0592000U1-UL (Philips);<br>Input:100-240 V~, 50/60Hz, 350mA;<br>Output: 5.9V $\bar{=}$ 2A |
|------------------|---|

|                             |     |
|-----------------------------|-----|
| Operation Power Consumption | 10W |
|-----------------------------|-----|

|                           |     |
|---------------------------|-----|
| Standby Power Consumption | <1W |
|---------------------------|-----|

|                                       |                   |
|---------------------------------------|-------------------|
| Dimensions:<br>-Main Unit (W x H x D) | 245x 123 x 122 mm |
|---------------------------------------|-------------------|

|                       |        |
|-----------------------|--------|
| Weight:<br>-Main Unit | 1.1 kg |
|-----------------------|--------|

# 7 Troubleshooting

## Warning

- Never remove the casing of this device.

To keep the warranty valid, never try to repair the system yourself.

If you encounter problems when using this device, check the following points before requesting service. If the problem remains unsolved, go to the Philips Web page ([www.philips.com/support](http://www.philips.com/support)). When you contact Philips, make sure that the device is nearby and the model number and serial number are available.

### No power

- Ensure that the AC power plug of the unit is connected properly.
- Ensure that there is power at the AC outlet.

### No sound

- Adjust the volume.

### Poor radio reception

- Increase the distance between the unit and your TV or VCR.
- Fully extend the FM antenna.

### Alarm does not work

- Set the clock/alarm correctly.

### Clock/alarm setting erased

- Power has been interrupted or the power plug has been disconnected.
- Reset the clock/alarm.

# 8 Notice

Any changes or modifications made to this device that are not expressly approved by Philips Consumer Lifestyle may void the user's authority to operate the equipment.

This Class B digital apparatus complies with Canadian ICES-003.

This device complies with Part 15 of the FCC Rules. Operation is subject to the following two conditions:

- This device may not cause harmful interference, and
- This device must accept any interference received, including interference that may cause undesired operation.

**This equipment has been tested and found to comply with the limits for a Class B digital device, pursuant to part 15 of the FCC Rules.**

These limits are designed to provide reasonable protection against harmful interference in a residential installation. This equipment generates, uses, and can radiate radio frequency energy and, if not installed and used in accordance with the instruction manual, may cause harmful interference to radio communications.

However, there is no guarantee that interference will not occur in a particular installation. If this equipment does cause harmful interference to radio or television reception, which can be determined by turning the equipment off and on, the user is encouraged to try to correct the interference by one or more of the following measures:

- Relocate the receiving antenna.
- Increase the separation between equipment and receiver.
- Connect the equipment into an outlet on a circuit different from that to which the receiver is connected.
- Consult the dealer or an experienced radio/TV technician for help.

Your product is designed and manufactured with high quality materials and components, which can be recycled and reused.

Never dispose of your product with other household waste. Please inform yourself about the local rules on the separate collection of electrical and electronic products. The correct disposal of these products helps prevent potentially negative consequences on the environment and human health.

Please visit [www.recycle.philips.com](http://www.recycle.philips.com) for additional information on a recycling center in your area.

### Environmental information

All unnecessary packaging has been omitted. We have tried to make the packaging easy to separate into three materials: cardboard (box), polystyrene foam (buffer) and polyethylene (bags, protective foam sheet.)

Your system consists of materials which can be recycled and reused if disassembled by a specialized company. Please observe the local regulations regarding the disposal of packaging materials, exhausted batteries and old equipment.



"Made for iPod" and "Made for iPhone" mean that an electronic accessory has been designed to connect specifically to iPod or iPhone respectively, and has been certified by the developer to meet Apple performance standards. Apple is not responsible for the operation of this device or its compliance with safety and regulatory standards. Please note that the use of this accessory with iPod or iPhone may affect wireless performance.

iPod and iPhone are trademarks of Apple Inc., registered in the U.S. and other countries.

2012 © Koninklijke Philips Electronics N.V. All rights reserved.

Specifications are subject to change without notice. Trademarks are the property of Koninklijke Philips Electronics N.V. or their

respective owners. Philips reserves the right to change products at any time without being obliged to adjust earlier supplies accordingly.

Philips Consumer Lifestyle  
A division of Philips Electronics North America Corporation  
P.O. Box 10313  
Stamford, CT 06904  
Phone: 1-888-PHILIPS (744-5477)

Meet Philips at the Internet  
<http://www.philips.com/welcome>



Specifications are subject to change without notice  
© 2012 Koninklijke Philips Electronics N.V.  
All rights reserved.

ORD2100\_37\_UM\_V1.1

