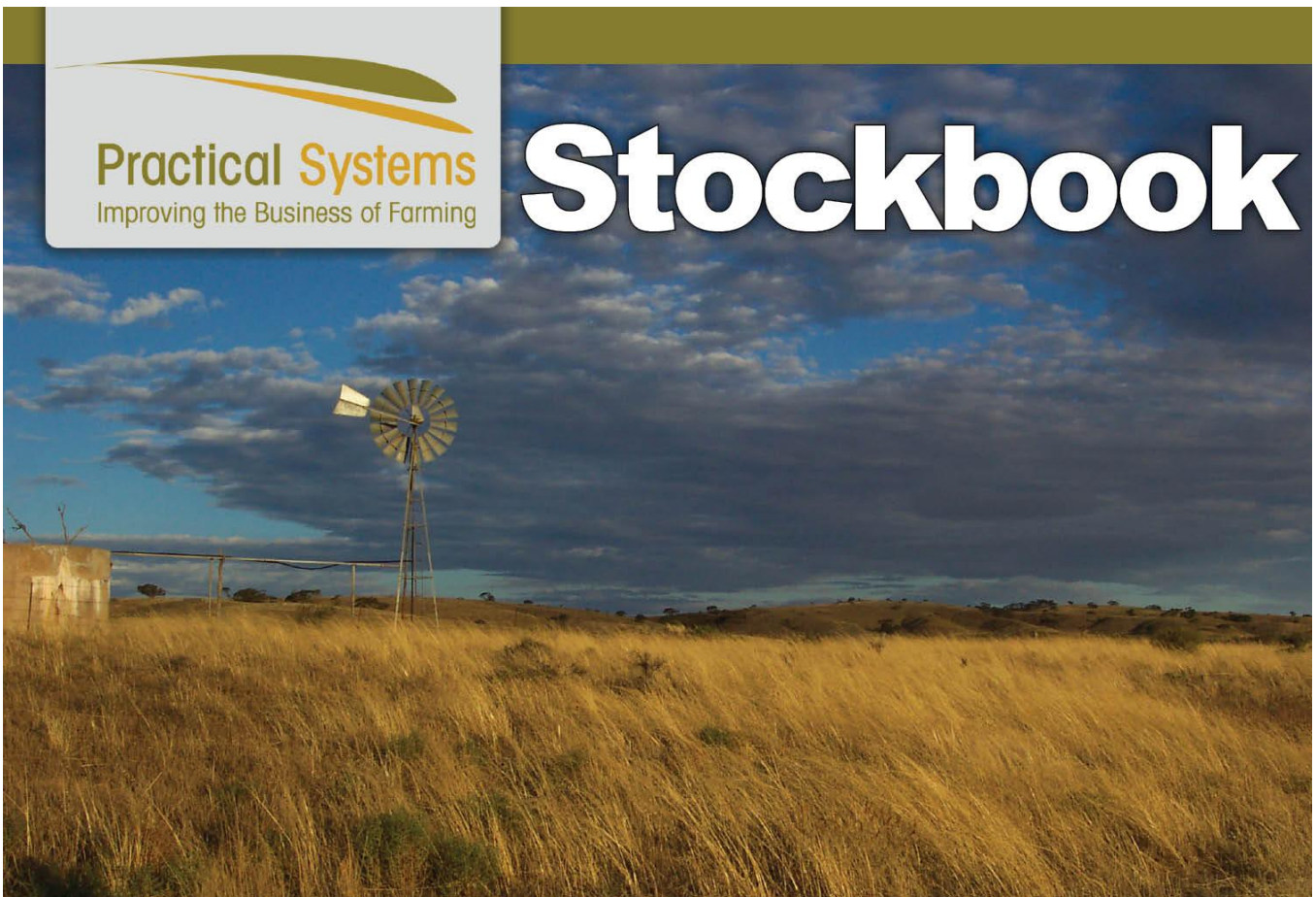




Practical Systems

Improving the Business of Farming

STOCKBOOK QUICK START GUIDE



**Livestock Management Software for Farmers to
Work Smarter**

Stockbook

© <2012> ... Practical Systems

All rights reserved. No parts of this work may be reproduced in any form or by any means - graphic, electronic, or mechanical, including photocopying, recording, taping, or information storage and retrieval systems - without the written permission of the publisher.

Products that are referred to in this document may be either trademarks and/or registered trademarks of the respective owners. The publisher and the author make no claim to these trademarks.

While every precaution has been taken in the preparation of this document, the publisher and the author assume no responsibility for errors or omissions, or for damages resulting from the use of information contained in this document or from the use of programs and source code that may accompany it. In no event shall the publisher and the author be liable for any loss of profit or any other commercial damage caused or alleged to have been caused directly or indirectly by this document.

Publisher

Practical Systems

Production

Support Team

Quick Start Guide Contents

1	How to Install Stockbook.....	3
1.2	The opening screen for Demonstration Herd	3
1.3	Registration	4
2	Finding help when you need it	4
2.1	On Screen Help	4
2.2	Demonstration Data.....	4
2.3	Practical Systems Software Support Desk.	5
3	Getting Started.....	5
3.1	Options for Initial Stockbook Setup.....	6
	Option One – Use the Setup Wizard	6
	Option Two - Entering setup information using the setup menus	7
3.2	Setup Backup Preferences	8
3.2.1	Data Warehouse Setup	9
3.3	
	The Setup Menus.....	10
3.3.1	Setup Mobs.....	10
3.3.2	Set up Groups	11
3.3.3	Setup Properties.....	11
3.3.4	Setup Paddocks.....	12
	Understanding the Paddocks List	12
3.3.5	Setup Treatments.....	12
	Animal Treatments	13
	Paddock Treatments	13
3.3.6	Setup Products.....	13
3.3.7	Setup Veterinary Activities	14
3.3.8	Setup Cost Events.....	15
3.4	Setup User Options.....	15
3.5	Backing Up.....	16
3.6	Restoring a Backup	17
4	Adding your animals Into Stockbook.....	18
4.1	Manually Adding Animals into Stockbook.....	18
4.2	Using the Add button	19
4.3	Using the Add Animal Wizard	19
4.4	Using the Multi-Add	20




4.5	Methods for Entering Animals Into Stockbook.....	20
4.6	Animal Types	21
5	Additional Setup for Stud Users.....	22
5.1	Society and Stud Setup for Stud Cattle	22
5.1.2	Setup Performance Recording for Cattle.....	23
5.2	Flock and Performance Recording Setup for Stud Sheep	25
	Setup Flock Details	25
5.2.1	Setup Performance Recording for Sheep	27

For more detailed instructions, please refer to the Stockbook Manual within the program under Help > Manual.

Stockbook Quick Start Guide

The hardest part about using new software is getting started. This Quick Start Guide offers the quick way to begin using and understanding Practical Systems' Stockbook.

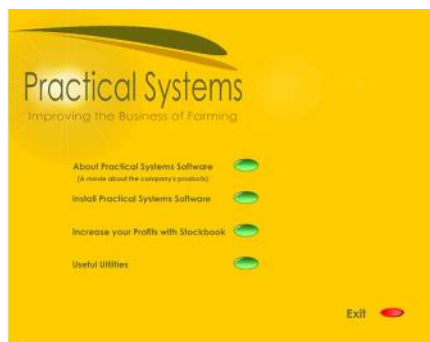
Quick Start Guide Icons


-  Learn a bit
-  Do a bit
-  Important information

1 How to Install Stockbook

There are two ways to install our programs:

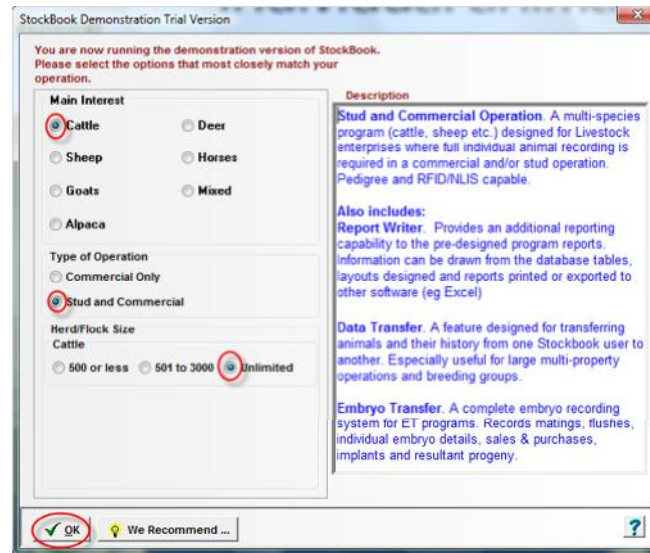
1. Practical Systems website www.practicalsystems.com.au
Go to **Customers > Login** and log in using your client ID and password.
Install the full program or update your existing program through our website.
2. Install from the installation disk.
 - Insert the Installation CD into your CD drive.
The CD will run automatically and open the Installation Screen.



 Use your mouse to select the program you wish to install and follow the onscreen prompts.

1.2 The opening screen for Demonstration Herd

From this screen select your main livestock type, type of operation and herd/flock size and click OK. Stockbook will now recommend which level of the program best suits your operation and allows you to view and use that particular level of Stockbook. Eg if you select the setting below you will have access to the Stockbook Stud unlimited herd size with report writer and embryo transfer whilst you are in the demonstration herd or trial period.



1.3 Registration

To register your purchased copy of Stockbook after installation, please phone Practical Systems on 1800 624 688 for your unique unlock code.



2 Finding help when you need it

Help and Electronic Documents



By going to the **Help menu** you will find a comprehensive set of resources to assist you including a full **Stockbook manual** and a search function for quick access to help on a particular subject.



Go to **Help > Manual**.

Additional instructions can be found by going to **Help > Program Documentation**.

2.1 On Screen Help



To summon help from within a particular area of the program relevant to the screen you are on:



Press the **F1 key** or click the  **button** at the bottom right of the screen.

2.2 Demonstration Data



The **demonstration data** in Stockbook has been created so that you can start viewing, editing or manipulating information straight away. This allows you to make entries of your own, amend and delete items - all to help you explore and understand the features of Stockbook.



Go to **File > Demonstration Herd**.

2.3 Practical Systems Software Support Desk.



Keeping your Annual Subscription up to date will ensure:

- **Your software is always current.** Your Annual Subscription entitles you to **program updates and upgrades.**
- **Help is always at hand.** Annual Subscription provides you with **telephone support** during business hours (8.30am to 5.30pm Monday to Friday AEST) to help you through any queries or problems you may have. Use of this service is unlimited for your period of cover.
Phone: 1800 624 688
- You are provided with **regular Practical Tip emails** in the form of a step by step guide that will help you keep getting the most from your software and **newsletters.**



3 Getting Started



As mentioned previously, the hardest part about using new software is getting started.

The two basic steps to get started are:

- Step 1. Enter setup information via the Setup Menu or Setup Wizard;
- Step 2. Enter your animals.

Don't forget to use the demonstration herd to assist you to view and/or practice using the program.



The following illustrates how to setup a commercial operation. If you have purchased the Stud edition you will also be required to complete the Part 5 “additional setup for Stud users” in this quick start guide.
Setup is strongly recommended before adding your animals.

Before we proceed please make sure you are in the main herd. If you are not, please go to



File > Main herd.

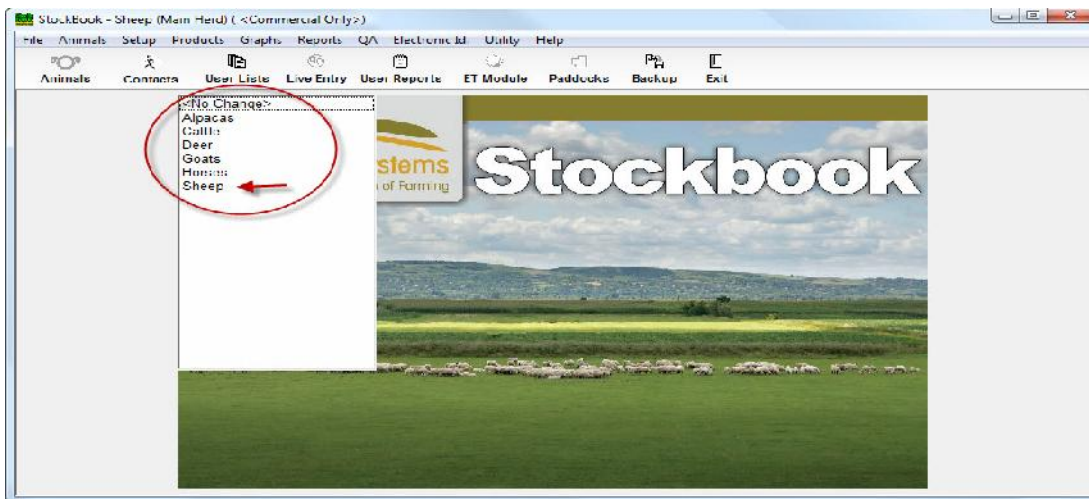


As Stockbook is a multi species program, select the livestock type you wish to set up first by going to:



File > Select livestock type or press **F5** on your keyboard.

Select a **livestock type** from the list and your main screen of Stockbook will now change to reflect the livestock type you have selected.



If you are already in the correct livestock type, click on <No Change>

3.1 Options for Initial Stockbook Setup

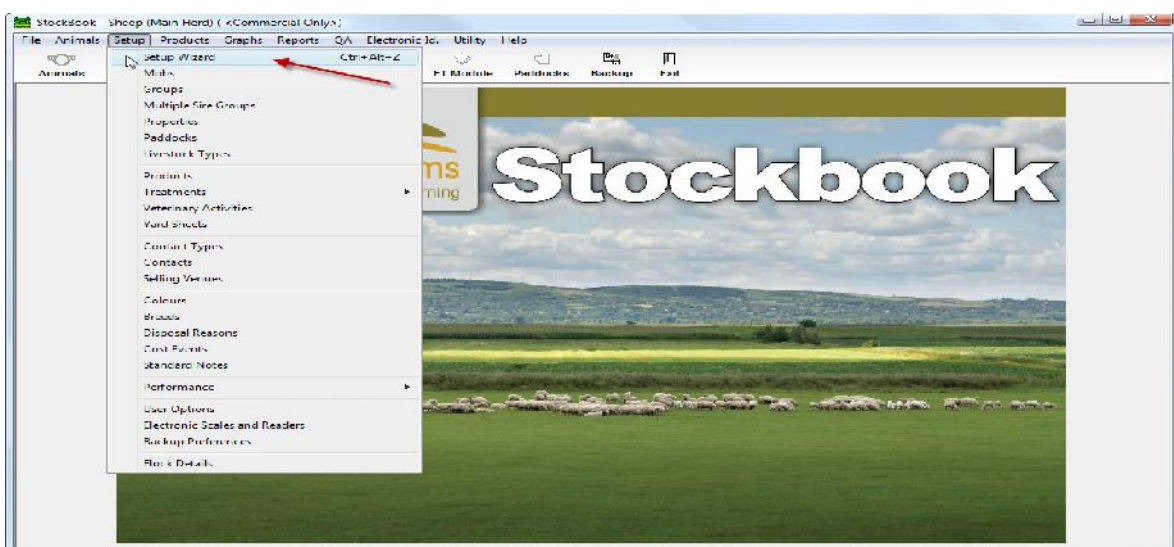
☝ There are two methods to choose from for the initial Stockbook setup -

Option One – Use the Setup Wizard

The set up wizard offers a quick way of getting started. You will complete 5 simple (optional) screens which allows you to setup basic information such as properties, paddocks, mobs and groups prior to adding your animals. Please use this quick start guide to assist you or the full manual for more detailed set up information.



Go to **Setup > Setup Wizard** or use **Ctrl+Alt+Z** on your keyboard.



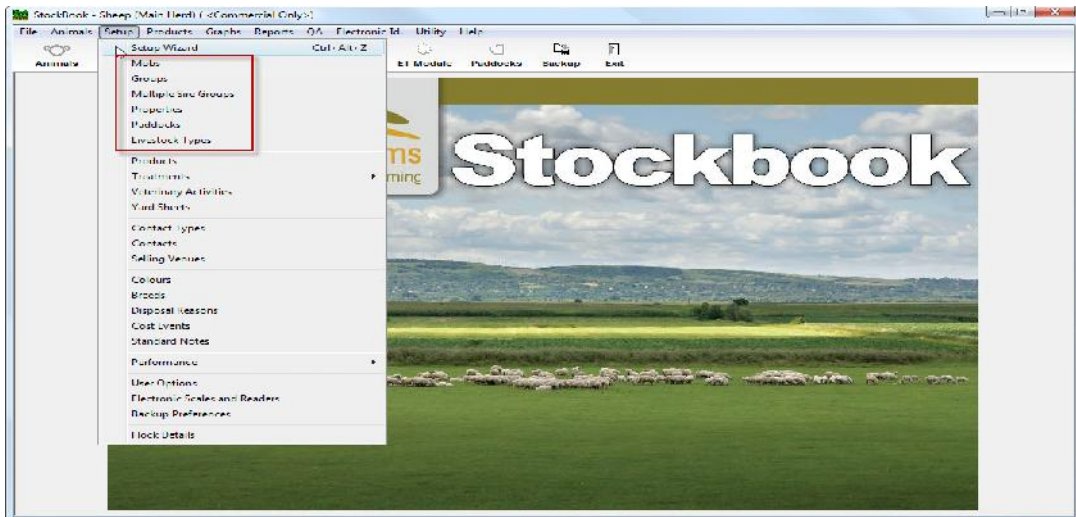



Please follow the prompts using this Quick Start Guide to assist you. Once you have entered your basic setup you can use the setup menus to add, edit or delete setup information.


Option Two - Entering setup information using the setup menus



Mobs, groups, properties, paddocks, treatment and products etc can be entered into a drop-down list to save time typing and to speed up data entry.



You can also add to the setup lists through the use of the  plus button which can be found throughout the data entry screens as you use the program (add on-the-fly).

If the selection that you require is not in your dropdown list, click on the  (plus button) and enter the required information, this will now be added to your dropdown list.(add on-the-fly)



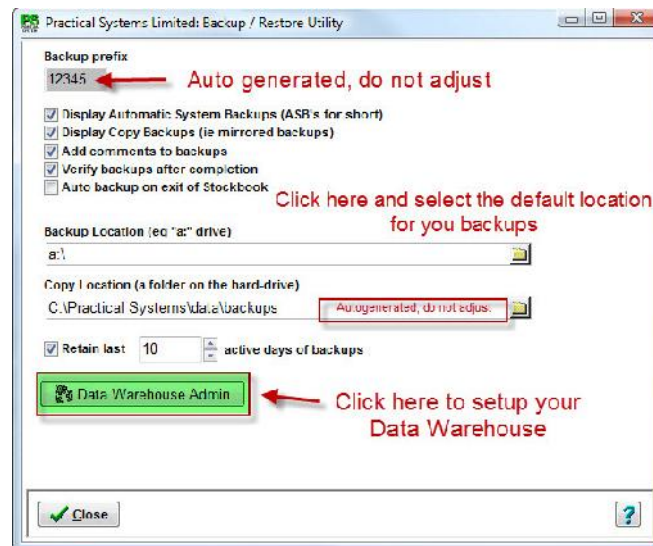
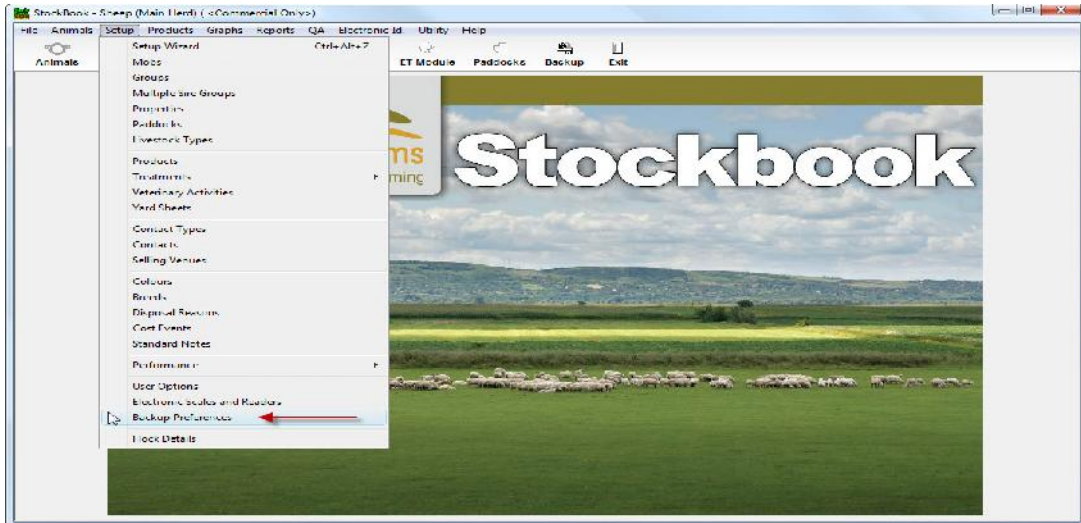
We suggest that you set-up most of the initial information from the menu items. This will speed-up the adding of animals in the first instance. Additions to the list can then be added on-the-fly as new items are required.

3.2 Setup Backup Preferences

👉 Before we start working our way through the suggested setup lists it is important to first setup your backup preferences.

👉 Backing up is fundamental to managing your Stockbook data.

💻 Go to Setup > Backup Preferences.



Select your preferences by ticking or unticking the series of tick boxes.

Click on the yellow folder (browse) in the backup location and select a location for your backups.

Note: If you would like it to default to a memory stick please insert the memory stick into your computer and you will be able to set this location for all your backups.

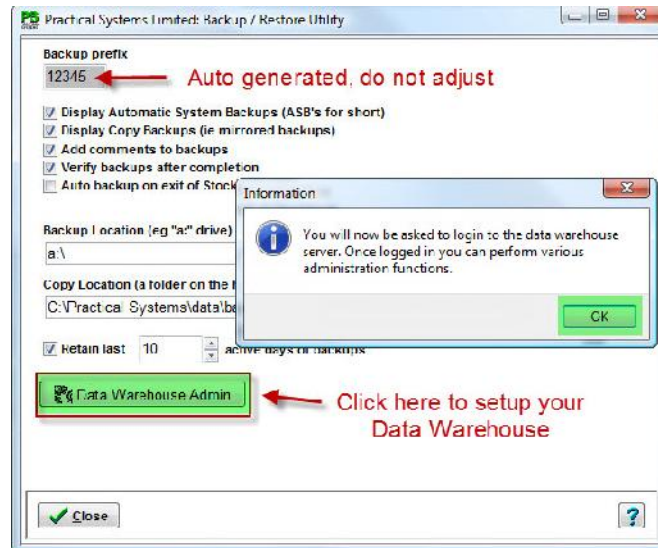
Backing up is vital and cannot be over-emphasized please see section 3.5 for how to backup. Relevant


3.2.1 Data Warehouse Setup

Backing up your data is the most important part of using Practical Systems software. It is also important to have a Backup that is external to your computer and possibly even in another location away from your office or home, in case of any unforeseen event.


The Practical Systems Data Warehouse is a secure, off-site data storage service, located on the Practical Systems server at our office.

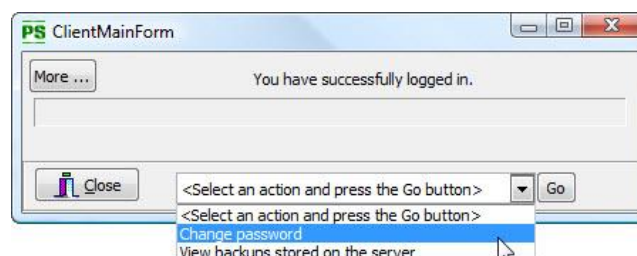
 Click on **Data Warehouse Admin**.




 the **first time you login**, your **password** will be **YOUR CLIENT ID**, You will then be prompted to change your password



 You can change your password at any time by logging in via **Data Warehouse Admin** and selecting **Change Password** from the drop down list



3.3 The Setup Menus

 The following outlines suggested lists to setup prior to adding your animals. Each setup list follows the same basic rules and allows you to do the following:

Add a new item:



Go to **Setup** and select desired list (e.g. Setup > Mobs).

Click on **Add**.

Enter a (unique) **code** (if code required) and **description**.

Click on **OK** to accept the data and prepare for another entry, or click on **Cancel/Exit** to close the screen without any changes to the database.

Edit an item:



Go to **Setup** and select desired list.

Highlight the item to be edited and click on **Edit** or double click on the item.

Modify details as required, or make inactive (for items you no longer want to appear in the list).

Delete an item:



Go to **Setup** and select desired list.


Highlight the item to be deleted.

Click on **Delete**.

Confirm the deletion.

Note: You cannot delete an item that still contains at least one active animal within the selected list.

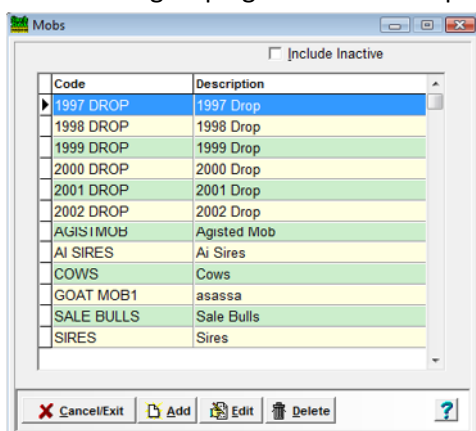


The following outlines **suggested lists** to setup prior to adding your animals. Keep in mind any items can be added on-the-fly by using the  plus button next to the drop down list on the appropriate screens.

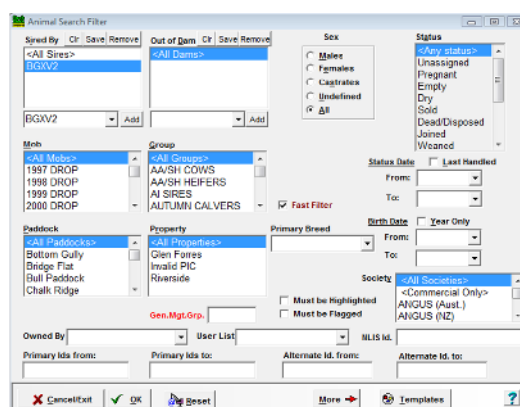
3.3.1 Setup Mobs



Mobs are a convenient method of organising animals, normally corresponding to physical mobs in paddocks. A mob can, however, be split over several paddocks, and can be used as a wider grouping method than a paddock.



Example of Mob Setup



First page of Stockbook filter - by clicking 'More' allows you to access another 3 pages of filter options.

You may choose to setup your mobs as e.g. sale bulls, young bulls, autumn calvers, Rams etc. or use the year drop as the mob name. It's purely a personal preference, but keep in mind how you would like to find/search for these animals in the future by using the filter within Stockbook. The filter allows you to filter/search on criteria such as mob, group, paddock through to more advanced criteria such as weights, carcass feedback, and fleece data. (See sample on first page of Stockbook filter).

Animals can be in several different mobs or groups over their lifetime but can only be in one mob or group at any one given time. You can make a mob inactive or delete it. If you wish to view inactive mobs tick include inactive box.

Note: A mob cannot be made inactive or deleted if there are currently active animals in that mob.

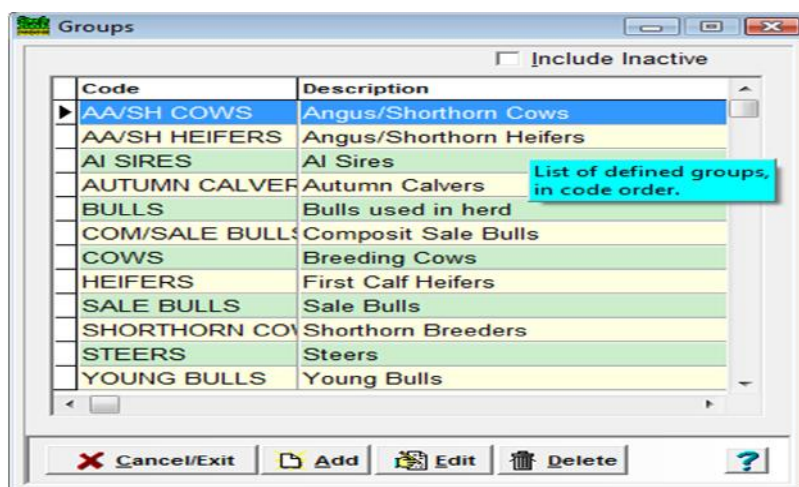


Go to **Setup > Mobs** menu option. A list of current active mobs will be displayed. Note: This will be blank the first time. From this display you can: **Add a new mob, Edit a mob or Delete a mob.**

3.3.2 Set up Groups



Groups are a convenient method of organising animals outside a paddock or mob. A group could be set up for a particular management purpose e.g. breeding cows, sale bulls etc. You may decide not to put animals into a group initially and only move some into a group if the need arises at a later date.



Example of Group Setup



Go to **Setup > Groups**. A list of current active groups will be displayed. Note this will be blank the first time. From this display you can: **Add a new group, Edit a group or Delete a group.**

3.3.3 Setup Properties

Every animal on file can be assigned to a paddock. Every paddock must be linked to a property.



Go to **Setup > Properties** menu option.

A list of active properties will be displayed. To include inactive properties, tick the **Include Inactive** box. From this display you can:

Add a new property, Edit a property or Delete a property.

3.3.4 Setup Paddocks

Paddocks relate to a physical paddock, however if you do not wish to use paddocks you can add a paddock that has the same name as your property.

Paddocks are used to record paddock treatments from a quality control perspective, animal grazing history and assist with filtering and reporting.



Go to **Setup > Paddocks** menu option. From this display you can:

Add a new Paddock, Edit a paddock, Delete a paddock or Add Paddock Treatments.

Client Id	Code	Name	Property	Withheld to	No. Animals	Area
INDIV	9	Bottom Gully	Glen Forrest		0	67
INDIV	19	Bridge Flat	Glen Forrest		1	2
INDIV	16	Full Paddock	Glen Forrest		9	20
INDIV	23	Chalk Ridge	Glen Forrest		8	43
INDIV	21	Cow	Glen Forrest		1	0
INDIV	29	Dawkins	Glen Forrest		75	10
INDIV	6	Dunkeld	Glen Forrest		2	21
INDIV	7	Dunns	Glen Forrest		0	21
INDIV	13	Forest	Glen Forrest		0	25
INDIV	11	Holding Paddock	Glen Forrest		11	0
INDIV	12	Horse	Glen Forrest		0	3
INDIV	10	House	Glen Forrest		0	2
INDIV	31	Howlands	Glen Forrest		0	
INDIV	14	Joeks	Glen Forrest		0	110
INDIV	20	Kinross	Riverside		0	60
INDIV	10	Kirkland	Glen Forrest		0	37
INDIV	1	Main Yards	Glen Forrest		0	
INDIV	16	Masters	Glen Forrest		103	90
INDIV	24	Middle Gully	Glen Forrest		22	113
INDIV	26	Mile End	Glen Forrest		32	121
INDIV	15	Millers	Glen Forrest		26	122
INDIV	27	Mole	Glen Forrest		10	10
INDIV	28	Polo	Glen Forrest		18	4
INDIV	16	Ram	Glen Forrest		1	5
INDIV	1	Rogers	Glen Forrest		63	63
INDIV	30	Russell	Glen Forrest		6	50
INDIV	32	Scout Hall	Glen Forrest		153	68
INDIV	17	Semen Tank	Glen Forrest		2	
INDIV	8	Snake Gully	Glen Forrest		19	21
INDIV	5	Swamp	Glen Forrest		0	21
INDIV	27	Top Gully	Glen Forrest		154	141
INDIV	11	Top Hill	Glen Forrest		21	61
INDIV	22	Tunnel Hill, Hill	Glen Forrest		112	05
INDIV	33	Woolshed	Glen Forrest		62	243
INDIV	1	Yards	YARDS			0

Example of Paddock Setup

Understanding the Paddocks List



This list presents basic details of every paddock in your database.

Important colour coding:

Dark Green Background: Indicates the paddock you have selected. To select paddocks in a continuous group – click on the first paddock hold down the Shift key and then click the last paddock. Individual paddocks may be selected or deselected by holding down the Ctrl key and click on the paddocks required.

Maroon italic: Indicates the paddock is inactive.

Red text: Indicates the paddock is currently in a withholding period due to a previous chemical treatment.

3.3.5 Setup Treatments



Treatments are operations carried out on **animals** or **paddocks** where a **specific product is used**. A description of the treatment type must be setup before they can be used.

Animal Treatments

Define your own treatment names for animal treatments. We suggest using a general description rather than a treatment method. E.g. 'Internal Parasites' rather than 'Drench' or 'External Parasites' rather than 'Pour-on', 'Vaccination' rather than '5 in 1' etc



Go to **Setup > Treatments/Animal**. From this display you can:
Add a treatment, Edit a treatment or Delete a treatment.

Client_Id	No.	Description
INDIV	2	Antibiotics
INDIV	1	Feeding
INDIV	9	Fly Control
INDIV	3	Lice and Worm Control
INDIV	10	Lice Control
INDIV	8	Vaccinate
INDIV	4	Vaccination
INDIV	11	Worm Control

Example of Animal Treatments

Paddock Treatments

Define your own treatment names for paddock treatments. Again we suggest using a general description rather than a treatment method. E.g. 'Weed Control' rather than 'Spray'.



Go to **Setup > Treatments/Paddock**. From this display you can:
Add a treatment, Edit a treatment or Delete a treatment.

Client_Id	No.	Description
INDIV	6	Re-growth treatment
INDIV	7	Spraying
INDIV	5	Weed Control

Example of Paddock Treatments

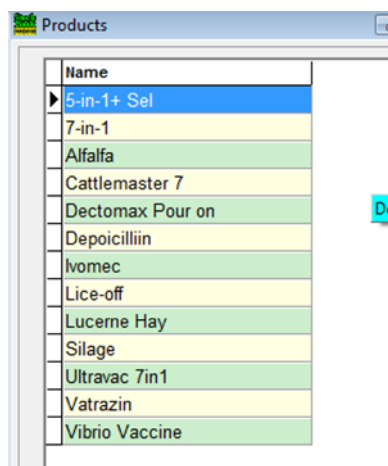
3.3.6 Setup Products



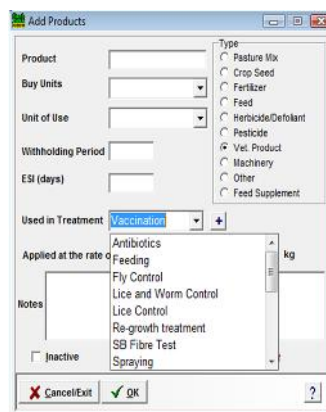
Products for use in animal and paddock treatments can be entered via the **setup menu**. E.g. 5 in 1. When adding a product, the **Used in Treatment** field can be selected from the dropdown list you created when you setup treatments.



Go to **Setup > Products** or **Products > Setup**. Both will take you to the same **Products** screen. From this display you can: **Add a new product, Edit a product or delete a product.**



Example of Products setup



Example of Add Products screen

Note: After you add the withholding period in days, whenever that product is applied during a treatment the withholding period is added to the treatment date, giving a release date. The animal or paddock will be displayed in red text indicating it is in a withholding period. An attempt to sell this animal will give a warning, as will attempting to move animals into a paddock that is in a withholding period.

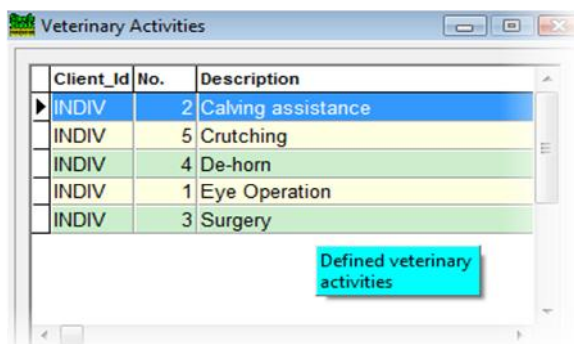
3.3.7 Setup Veterinary Activities



Veterinary Activities relate to **procedures** that are of a general nature and do not require the **use of a product**. (E.g. Brucellosis Testing, Eye Operation, Feet Trimming). You can define as many different activities as you like.



Go to **Setup > Veterinary Activities**. From this display you can: **Add a new veterinary activity, Edit a veterinary activity or Delete a veterinary activity.**



Example of Veterinary Activities'

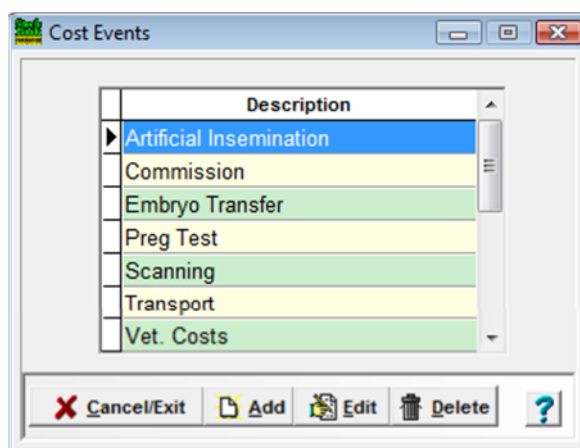
3.3.8 Setup Cost Events



Cost Events are descriptions that you can setup as standard descriptions for recording animal costs eg. Transport, yard dues, commissions etc. You will notice there is already an extensive list setup in this area of the program.



Go to **Setup > Cost Events**. From this display you can:
Add a new cost event, Edit a cost event or Delete a cost event.



Example of Cost Events

3.4 Setup User Options

User options allow you to customise parts of Stockbook.



Go to **Setup > User Options**

The six user option tabs are:

- General
- Options
- Screen
- User Fields
- Colours
- Animal Display

Suggested areas to setup initially are:



Go to General tab – Enter your trading name. This is the name you would like to appear at the top of any reports generated through Stockbook.

Installation type must be set on “Normal” (Both for Stud and Commercial users) unless the program is being operated by a Breed Society. E.g. You are an actual Breed Society.

Performance Recording System is only used if you submit data to a performance recording system. You do not need to do this if you are enrolled in Breedplan.



Go to Options tab – select your preferences by ticking or unticking the boxes.



Go to User Fields tab – This allows you customise/change the labels on the ‘Basic Animal Details’ screen; it is advisable to keep alternate ID and NLIS ID as is.

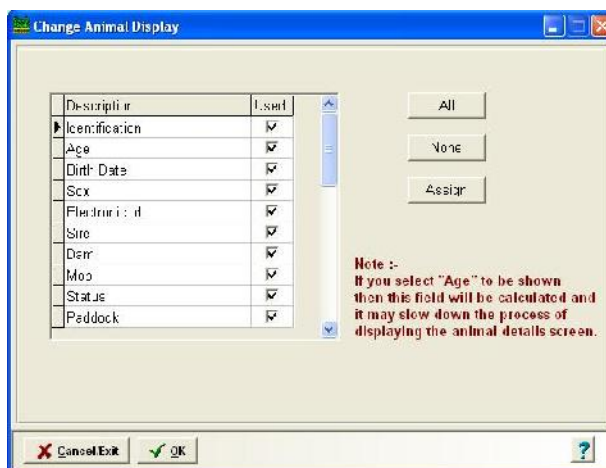


Go to Animal Display tab – This allows you customise your main animal display screen.

Put a tick in the box beside each field you would like to have displayed.

When you have completed choosing the fields you wish to have displayed, click **Assign** and then click **OK**.

Note : The weight option displays the last weight taken for that animal. The Micron option (for sheep producers) displays the last Micron measured.

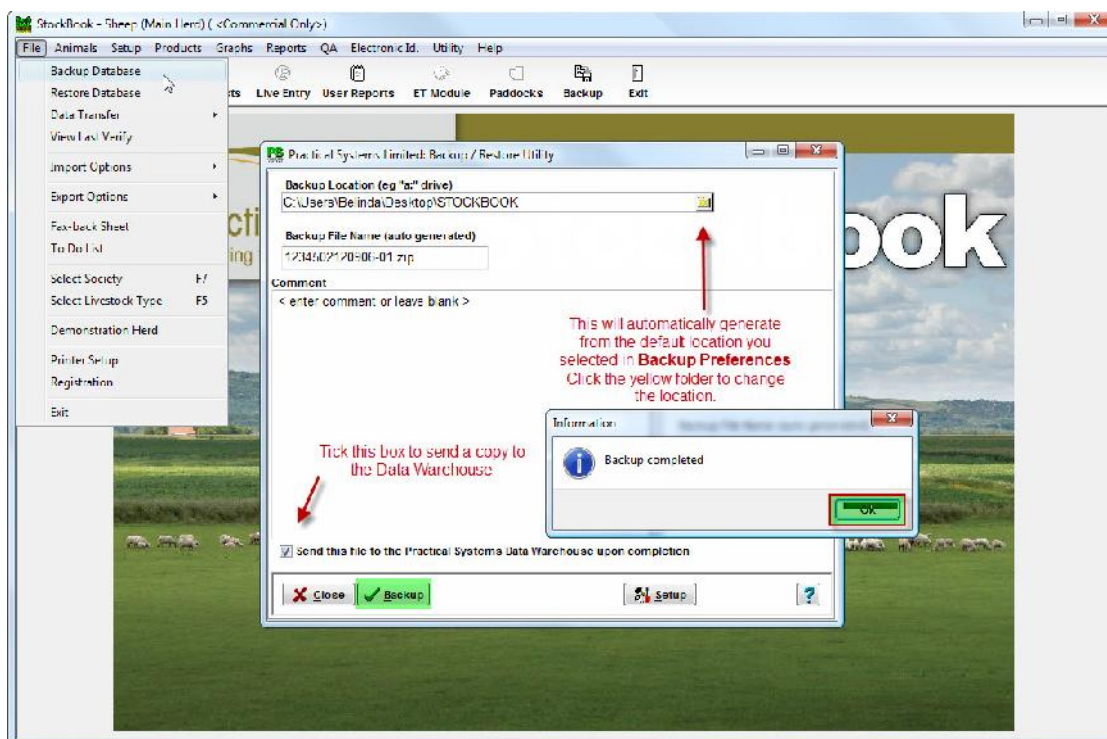


Now you have completed your setup you have a great head start to minimizing data entry.


👉 For Stud operations, please complete the section “Additional setup for Stud Operations” in Part 5 of this quick start guide. Setting up Stud information is strongly recommended before adding your animals.

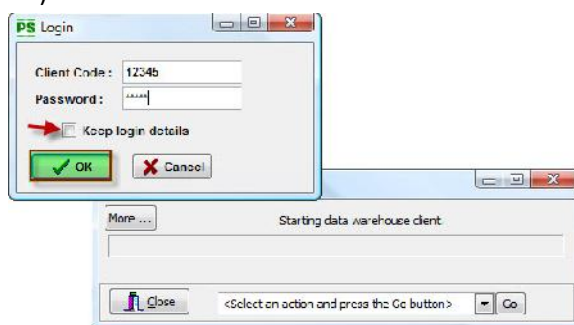
3.5 Backing Up



👉 **FOLLOW THE STEPS BELOW AND BACKUP YOUR DATA SO FAR, BEFORE ADDING ANY ANIMALS.**

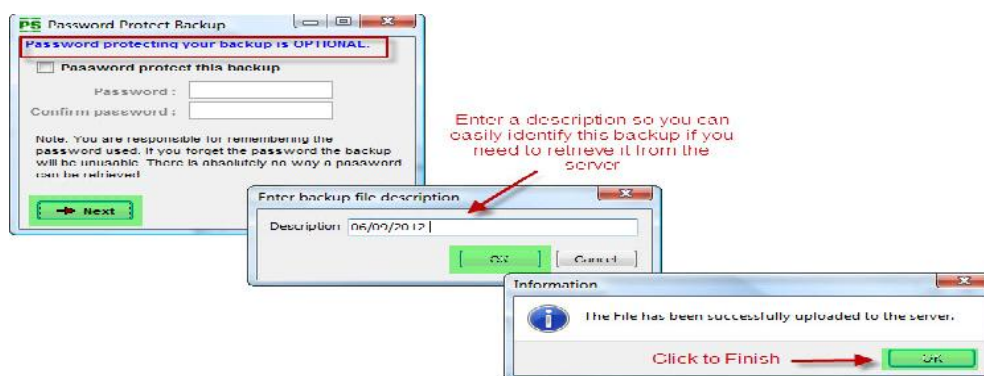


 If you chose to Send a copy of the backup to the Practical Systems Data Warehouse:


-  Once you click **OK** to complete the local backup you will be required to login to the Data Warehouse using your **Client ID** and **Password** (the first time you login your password will be your Client ID, and you will be prompted to set a new one, see section 3.2.1)

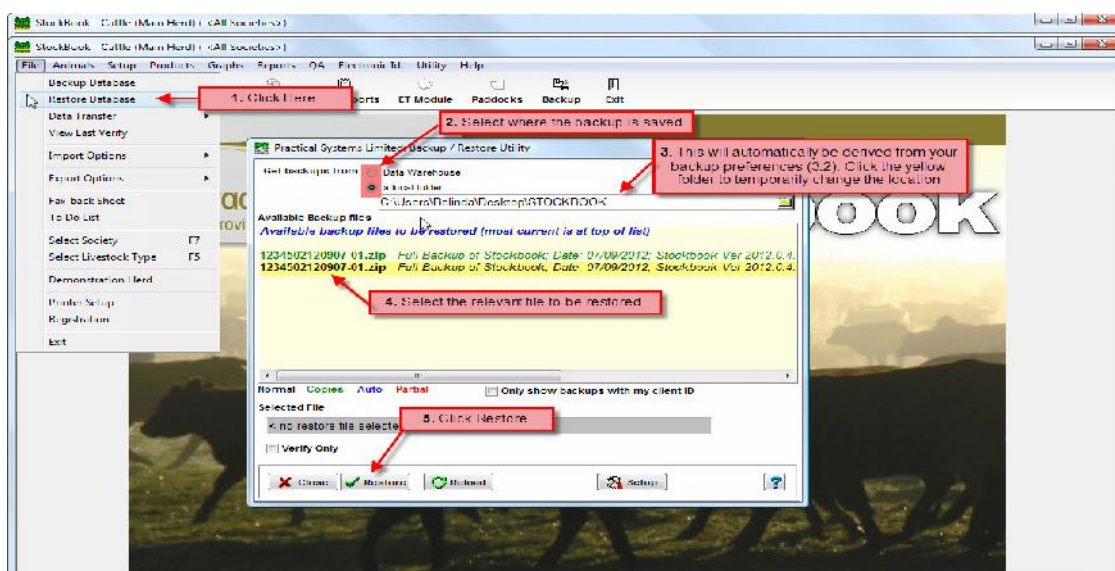


-  Once you've successfully logged onto the server, you have the option to **Password Protect** the backup. This is completely optional, click **Next** to continue
-  Enter a backup file description, such as the date of the backup or the activity that you completed in Stockbook that session.



3.6 Restoring a Backup

 In the event of things “going pear shaped while adding your animals” you can simply **restore** your **backup** that you made prior to adding animals and try adding animals again. If restoring from the Practical Systems Data Warehouse please refer to the User Manual.





4 Adding your animals Into Stockbook

- 👉 There are various methods of adding your existing animals for the first time. The following illustrates how to manually add animal details.
- 👉 For a full list of methods for adding animals refer to section 4.5 of this quick start guide.

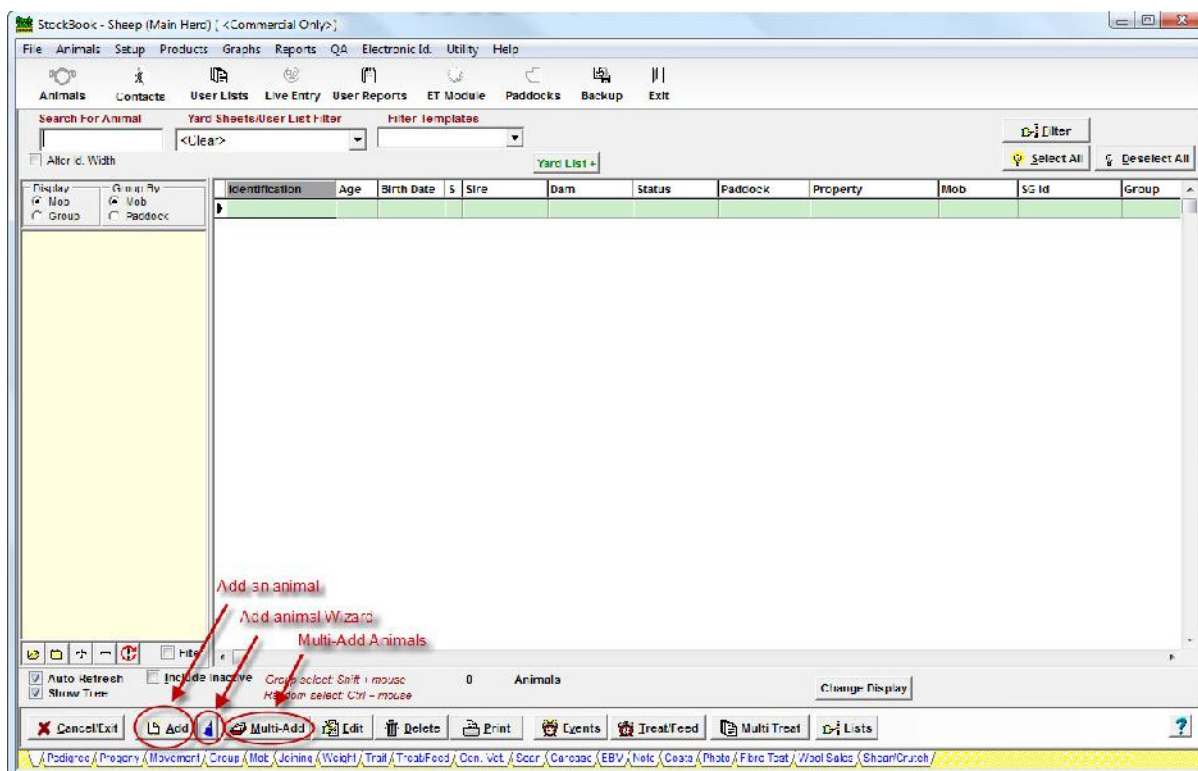
4.1 Manually Adding Animals into Stockbook

There are a few options for manually adding animals –

Option one – Use the **Add button** from the main animal screen (see section 4.2)


Option two – Use the **Add animal wizard** (see section 4.3)

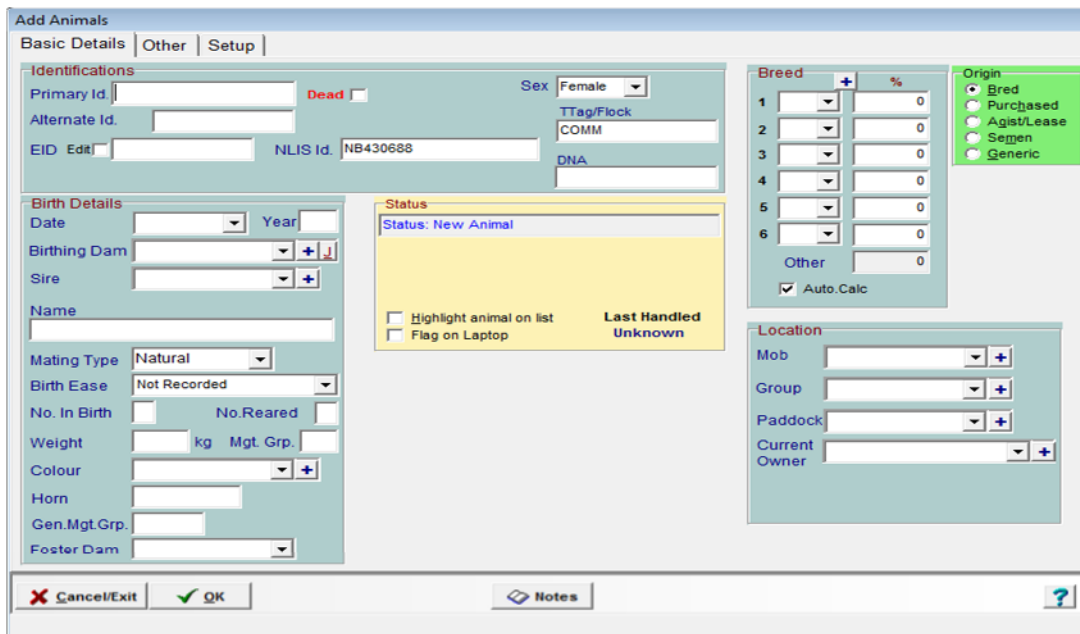
Option three – Use **Multi-Add** (see section 4.4)



Example of where to find the various ways of manually entering animals


4.2 Using the Add button

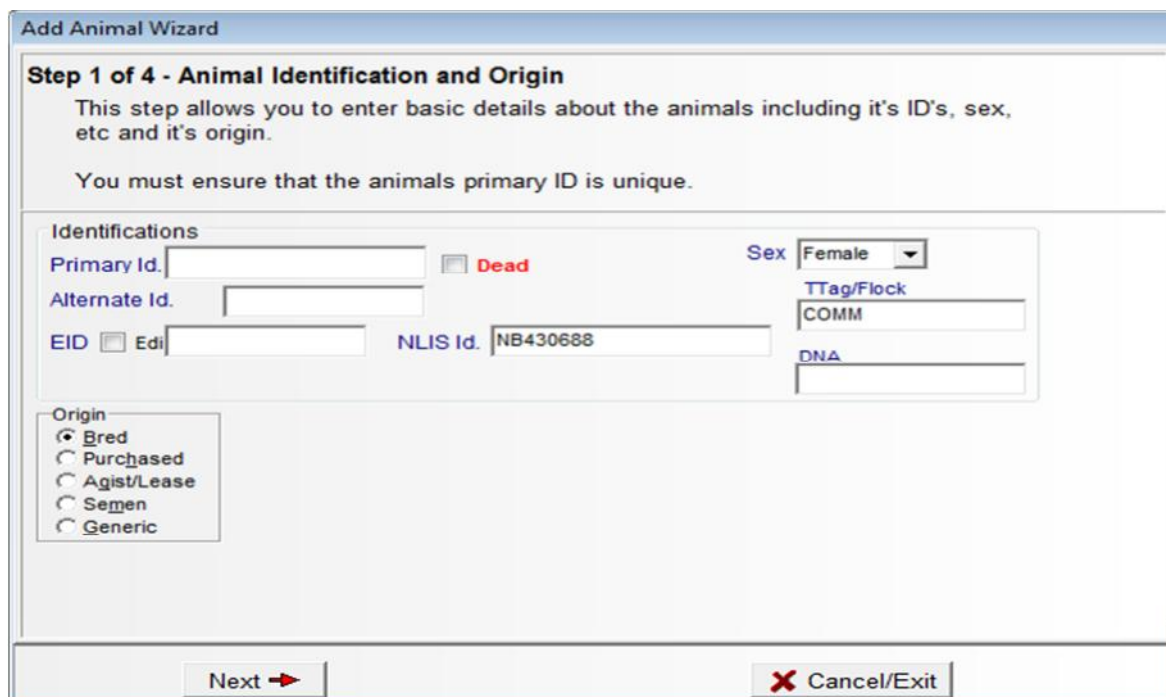
-  Manual data entry allows you to enter as little or as much information as you require. If you do not add a Primary Id (visual ID) Stockbook will generate one for you.



Example of option one – Using Add button

4.3 Using the Add Animal Wizard

-  Using the add animal wizard steps out the process of adding an animal over a series of 4 screens. If you do not add a primary Id (visual ID) Stockbook will generate one for you.



Example of option two – Using the Add Animal Wizard

4.4 Using the Multi-Add



Multi-Add allows you to add a number of animals either by allocating a specific Visual ID range or by retrieving tags numbers from an unallocated tag list.

Example of option three – Using the multi-add

4.5 Methods for Entering Animals Into Stockbook



As mentioned there are various methods of adding your existing animals for the first time. The following table illustrates the various options for entering animals into Stockbook. Use this table to help you decide the easiest way to enter your animals based on your type of operation, equipment and animal information you have.

<i>Method of entry into Stockbook</i>	<i>Equipment Needed</i>	<i>Recommended for</i>	<i>Ease of use</i>
Manual Data Entry via the add animal, add animal wizard or Multi add screen. Starting at your oldest animal first.	Stockbook computer Visual Id numbers and animal details	This method is recommended for small herds/flocks.	Easy
Data Extraction from your Breed Society.	Data Extraction forms are available from Practical Systems.	This method is recommended for setting up Stud animals.	Easy
CSV Import or import from data collector file.	Stockbook Computer Excel file converted to a CSV file or Data collector file	If you have animal information in excel spread sheets (note this will need to be saved as CSV files before importing into Stockbook. You can also import files that been created from data collectors.	Moderate knowledge of excel & CSV files required

Import data direct from collector	Stockbook Computer Data collector	This allows you to import direct from your weigh scales	Moderate knowledge of hardware required
Transfer data from reader	Stockbook Computer Reader with storage	This allows you to add animals by downloading direct from your reader	Moderate knowledge of hardware required
Using the laptop screen	Stockbook & laptop computer to use in yards – readers and scales can be directly plugged into the laptop but are not essential for using the lap top screen.	This option offers a quick effective method of adding animals.	Ability to operate lap top computer and hardware in the yards.
Download a tag bucket file from NLIS database	Stockbook Computer with internet access.	This method allows you to download existing animals and unassigned tags assigned to your PIC from the NLIS database. This information can then be imported into Stockbook.	Moderately computer literate

4.6 Animal Types

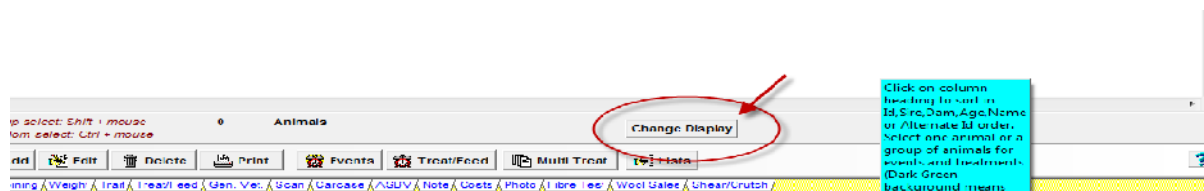
Once your animals are entered your animals into Stockbook they can be seen by clicking on the Animals icon.



You will notice there are three types of animals in Stockbook:

1. Current Animals - The current animals are ones on your farm at this moment.
2. Inactive Animals - The inactive animals are those animals that have been disposed of, (either sold or died). You can still view these animals on the main data base, look up their history and include them in reports. (These animals can be viewed by putting a tick in the Show Inactive box.
3. Archived Animals - Animals that have been made inactive can be archived. This procedure removes the animals from the current animal list and moves them to an archived database. The benefit of this procedure is to reduce your current animal list. Archived animals can be returned to the current animal list if needed.

- ☞ To adjust your main animal display screen, click on change display located at the bottom left of the main animal screen.




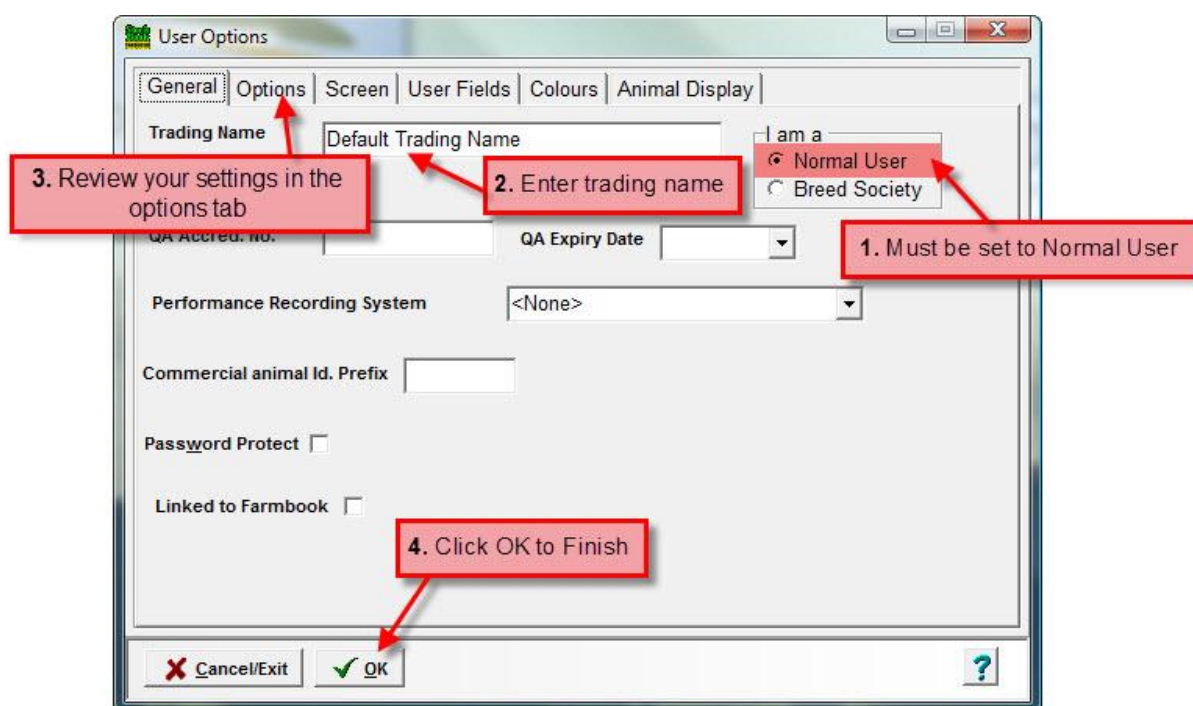
5 Additional Setup for Stud Users

- ☞ This additional setup is done primarily to facilitate the transfer of data to and from Sheep Genetics, ABRI and Breed Societies.
We have outlined the necessary steps to enable this function.

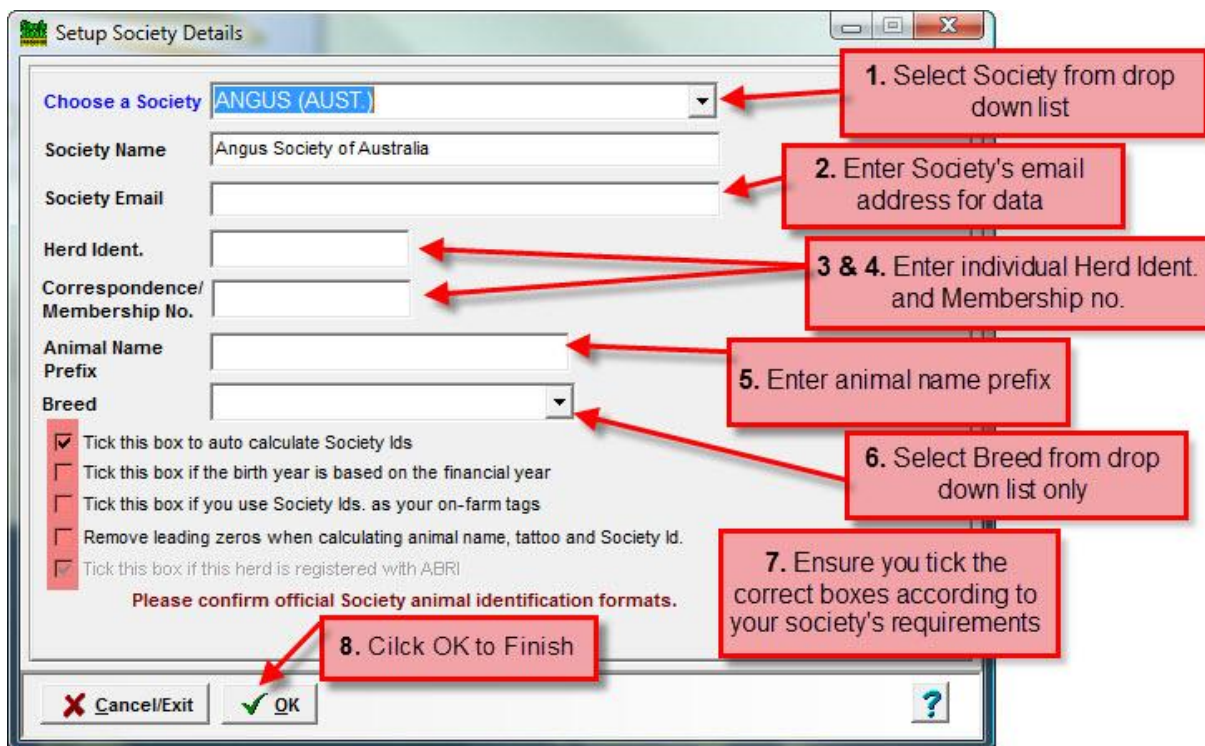
5.1 Society and Stud Setup for Stud Cattle

- ☞ Complete the steps below to enable data import and export facility between Stockbook, your Breed Society and ABRI.

 Complete **steps 1 – 4** as pictured below



 Go to **Setup > Society Details** & Follow steps 1 – 8 as pictured below



1. Select Society from drop down list

2. Enter Society's email address for data

3 & 4. Enter individual Herd Ident. and Membership no.

5. Enter animal name prefix

6. Select Breed from drop down list only

7. Ensure you tick the correct boxes according to your society's requirements

8. Click OK to Finish

Choose a Society: **ANGUS (AUST)**

Society Name: Angus Society of Australia

Society Email:

Herd Ident.:

Correspondence/ Membership No.:

Animal Name Prefix:


Breed:

Tick this box to auto calculate Society Ids
 Tick this box if the birth year is based on the financial year
 Tick this box if you use Society Ids. as your on-farm tags
 Remove leading zeros when calculating animal name, tattoo and Society Id.
 Tick this box if this herd is registered with ABRI

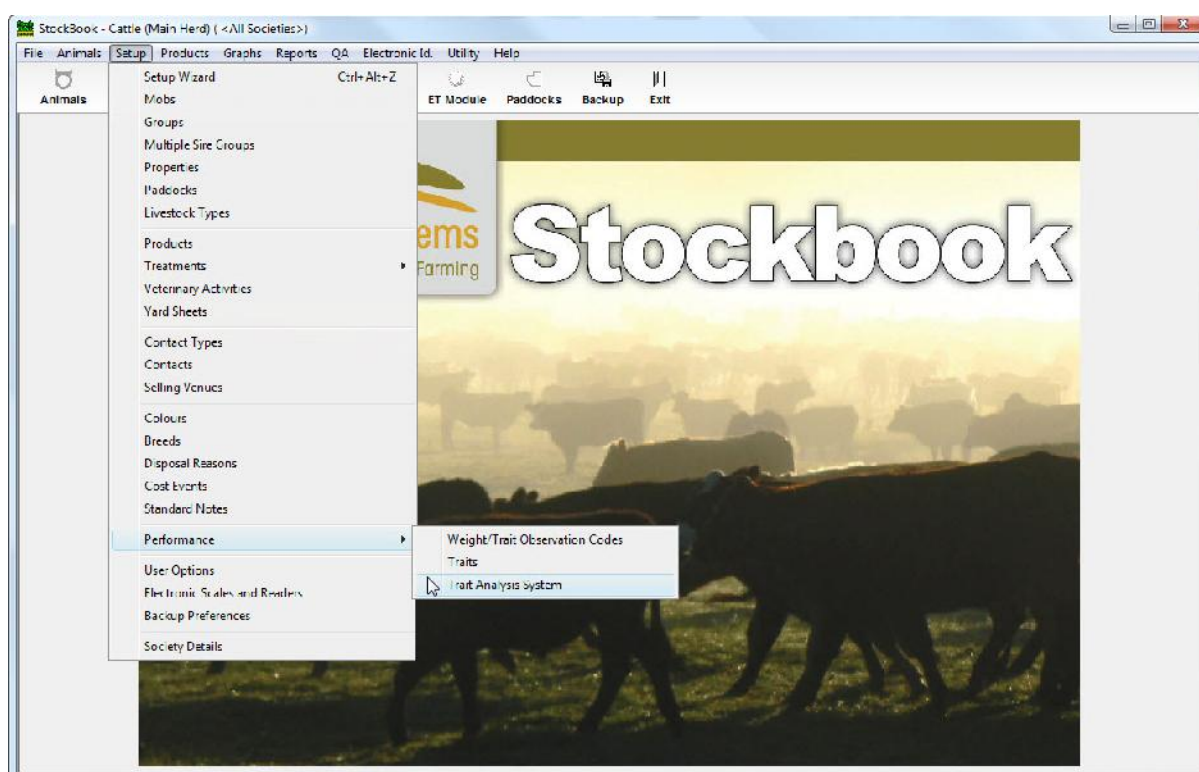
Please confirm official Society animal identification formats.

Cancel/Exit OK

5.1.2 Setup Performance Recording for Cattle

 Complete the steps below to Setup your Trait Analysis System for Cattle

 Go to **Setup > Performance > Trait Analysis System**





Follow the steps 1-3 below

Assign Trait Names for "Cattle" using Estimated Breeding Values

No.	Use	Code	Description	High Colour	Print	High	Low Colour	Print	Low	Decimals	%
1	<input checked="" type="checkbox"/>	BthWt	Birth Weight	<none>	<input type="checkbox"/>		<none>	<input type="checkbox"/>			<input type="checkbox"/>
2	<input checked="" type="checkbox"/>	200 M	200 Day Milk	<none>	<input type="checkbox"/>		<none>	<input type="checkbox"/>			<input type="checkbox"/>
3	<input checked="" type="checkbox"/>	200 G	200 Day Growth	<none>	<input type="checkbox"/>		<none>	<input type="checkbox"/>			<input type="checkbox"/>
4	<input checked="" type="checkbox"/>	400 G	400 Day Growth	<none>	<input type="checkbox"/>		<none>	<input type="checkbox"/>			<input type="checkbox"/>
5	<input checked="" type="checkbox"/>	600 G	600 Day Growth	<none>	<input type="checkbox"/>		<none>	<input type="checkbox"/>			<input type="checkbox"/>
6	<input checked="" type="checkbox"/>	900 G	900 Day Growth	<none>	<input type="checkbox"/>		<none>	<input type="checkbox"/>			<input type="checkbox"/>
7	<input checked="" type="checkbox"/>	Mat'l	Maternal	<none>	<input type="checkbox"/>		<none>	<input type="checkbox"/>			<input type="checkbox"/>
8	<input checked="" type="checkbox"/>	B.Mtl	Birth Weight Maternal	<none>	<input type="checkbox"/>		<none>	<input type="checkbox"/>			<input type="checkbox"/>
			ation Length	<none>	<input type="checkbox"/>		<none>	<input type="checkbox"/>			<input type="checkbox"/>
			al Size	<none>	<input type="checkbox"/>		<none>	<input type="checkbox"/>			<input type="checkbox"/>
			To Calving	<none>	<input type="checkbox"/>		<none>	<input type="checkbox"/>			<input type="checkbox"/>
			at (Old)	<none>	<input type="checkbox"/>		<none>	<input type="checkbox"/>			<input type="checkbox"/>
			Fat (Old)	<none>	<input type="checkbox"/>		<none>	<input type="checkbox"/>			<input type="checkbox"/>
			Muscle Area (Old)	<none>	<input type="checkbox"/>		<none>	<input type="checkbox"/>			<input type="checkbox"/>
15	<input type="checkbox"/>	EMYkg	Est	<none>	<input type="checkbox"/>		<none>	<input type="checkbox"/>			<input type="checkbox"/>
16	<input type="checkbox"/>	EMY %	Est	<none>	<input type="checkbox"/>		<none>	<input type="checkbox"/>			<input type="checkbox"/>
17	<input checked="" type="checkbox"/>	CE Dir	Cal	<none>	<input type="checkbox"/>		<none>	<input type="checkbox"/>			<input type="checkbox"/>
18	<input checked="" type="checkbox"/>	CE.MI	Calving Ease Maternal	<none>	<input type="checkbox"/>		<none>	<input type="checkbox"/>			<input type="checkbox"/>
19	<input checked="" type="checkbox"/>	MCow	Mature Cow	<none>	<input type="checkbox"/>		<none>	<input type="checkbox"/>			<input type="checkbox"/>

3. Select the EBV's and Breed objects you would like to use. Tick (use) tick (don't use) and then click close to finish.

2. Click on Set Standard Breedplan

1. Select the Estimated Breeding Values from this drop down

Use All Use None Set Standard Breedplan

Trait Analysis System Estimated Breeding Values For "Cattle"

Close Initialise High Colour Low Colour Clear Colours Print

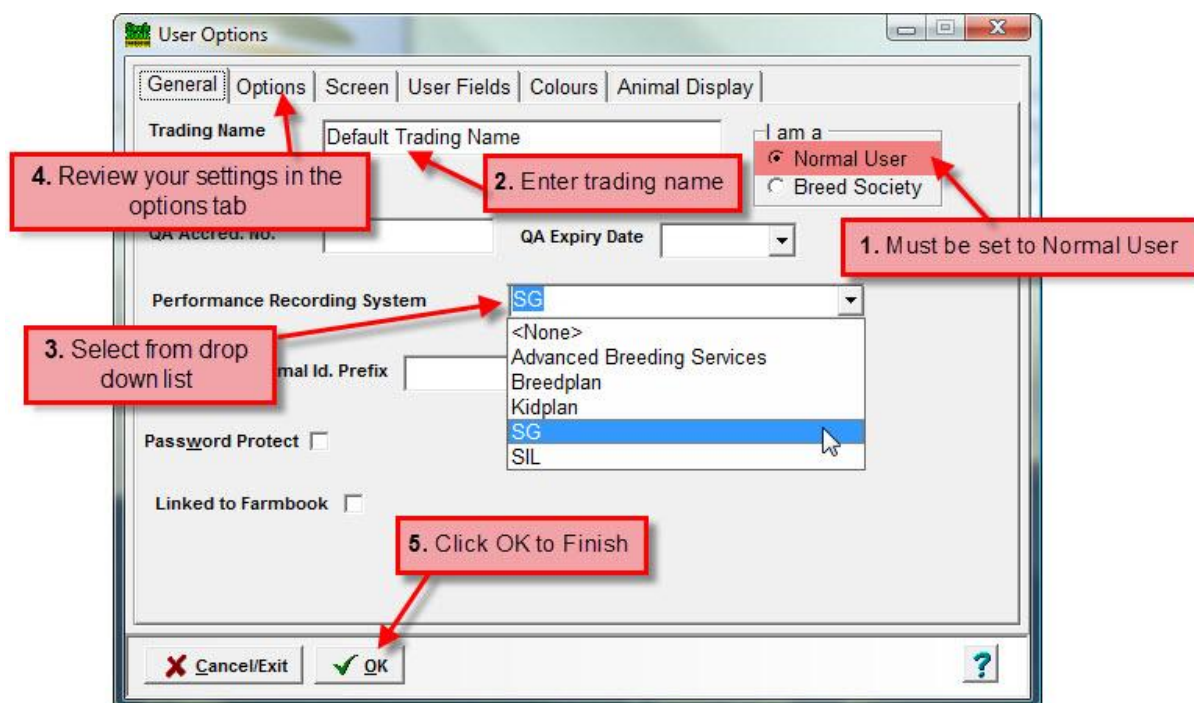
- 👉 You must select a minimum of one and a maximum of 19 EBV's, at least one Breed Object and a maximum of 6.

This completes the Society and Stud Cattle Setup

5.2 Flock and Performance Recording Setup for Stud Sheep

👉 Please complete the steps below to enable data the transfer of data between Stockbook, Sheep Genetics and your Breed Association.

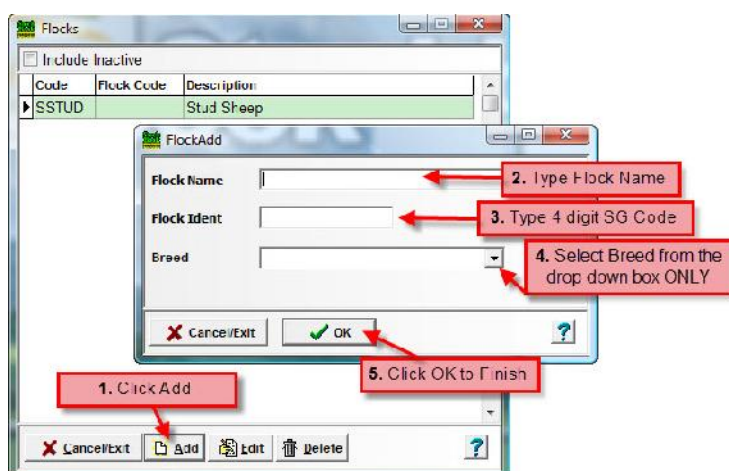
🖥️ Go to **Setup > User Options > Follow steps 1 – 5**



👉 It is also advised to review your settings in the options tab

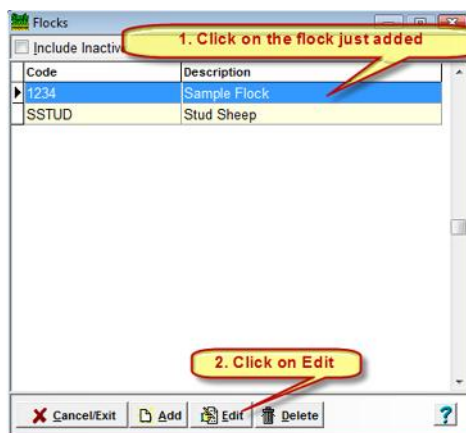
Setup Flock Details


🖥️ Go to **Setup > Flock Details > Follow Steps 1 to 5**

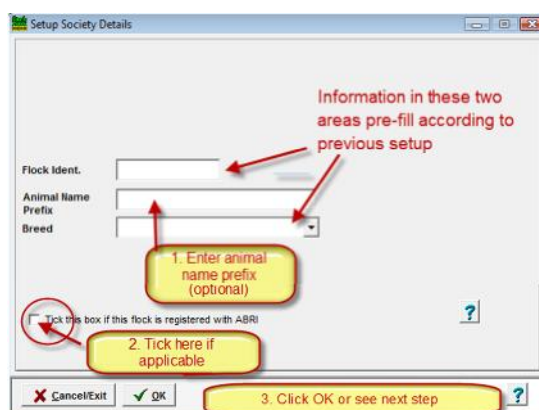


👉 *If you are registering your lambs with a Breed Association please continue.*

 Complete steps 1 & 2 below:

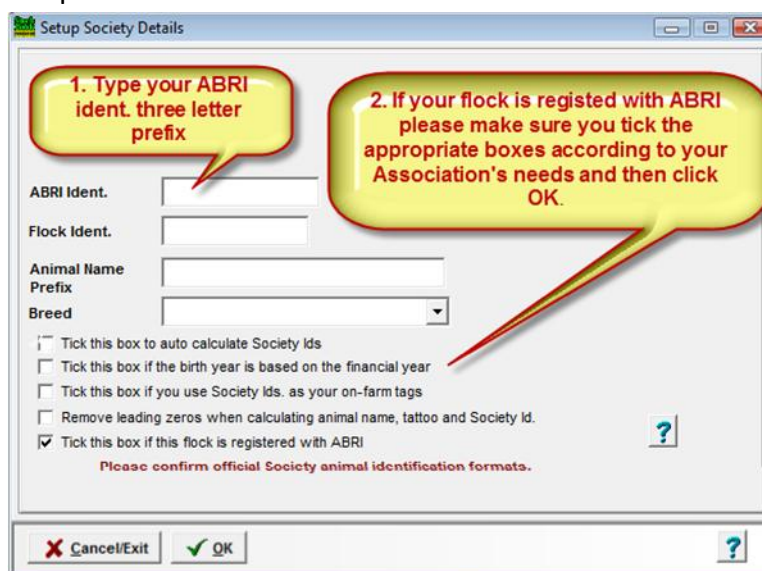


 Complete steps 1-3 below:



 *If your flock is registered with ABRI, please complete the following*

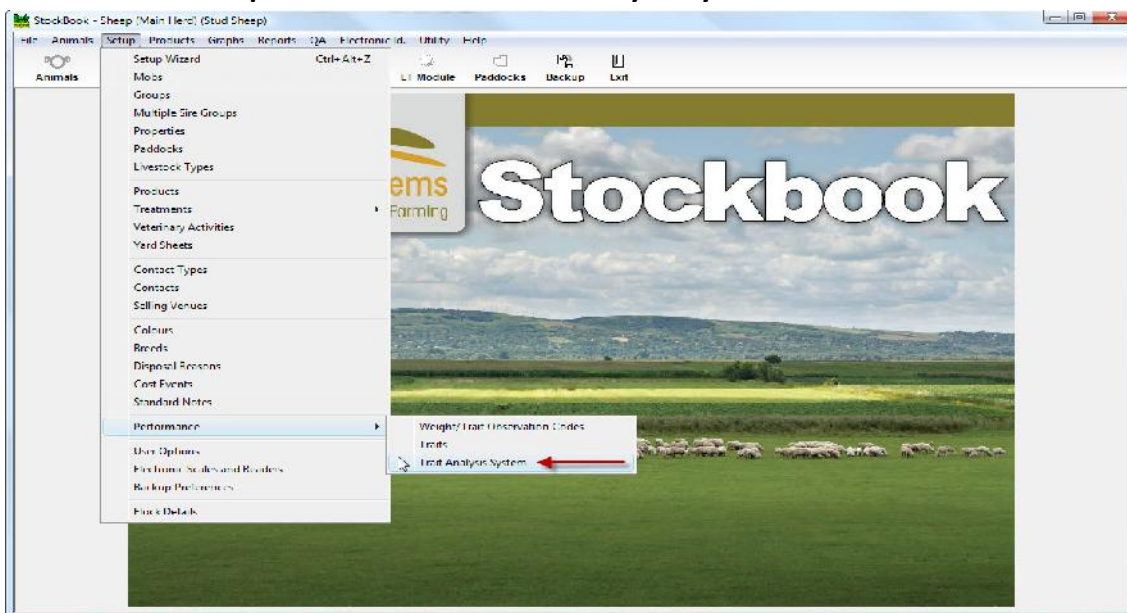
 Complete steps 1 & 2 below:



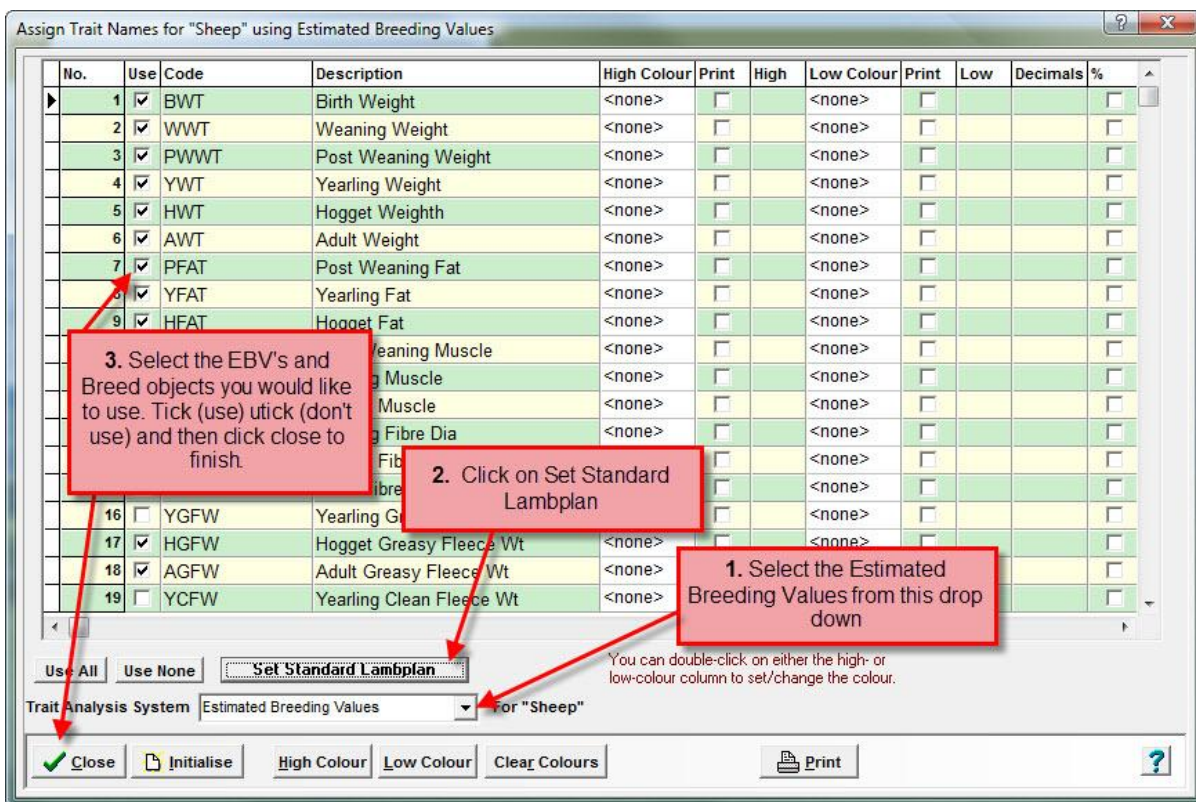
5.2.1 Setup Performance Recording for Sheep

👉 Complete the steps below to Setup your Trait Analysis System for Sheep

🖥️ **Go to Setup > Performance > Trait Analysis System**



🖥️ **Complete Steps 1- 3**



👉 You must select a minimum of one and a maximum of 19 ASBV's, at least one Breed Object and a maximum of 6.

This completes the setup for Stud Sheep.

