



V-Series Reach-In Refrigerators and Freezers Owners Manual

(For “Quick Navigation”, Click On Topics or Sections Highlighted In Blue)



- ★ DESCRIPTION
- ★ INSTALLATION
- ★ OPERATION
- ★ MAINTENANCE
- ★ TROUBLESHOOTING
- ★ PARTS LISTS
- ★ WIRING DIAGRAMS





LIMITED WARRANTY **(Continental USA Only)**

The Seller warrants to the original purchaser, equipment manufactured by Seller to be free from defects in material and workmanship for which it is responsible. The Seller's obligation under this warranty shall be limited to replacing or repairing at Seller's option, without charge, F.O.B. Seller's factory, any part found to be defective and any labor and material expense incurred by Seller in repairing or replacing such part, such warranty to be limited to a period of 90 days from date of purchase or 120 days from date of shipment from Seller's factory, whichever is earlier, provided terms of payment have been fully met. All labor shall be performed during regular working hours. Overtime premium charges will be at Buyer's expense.

In addition to the above, Seller will replace any part deemed by it to be defective without charge for such replacement except labor charges, such warranty to be limited to period of one year from date of purchase or 13 months from date of shipment of the equipment from Seller's factory.

Proof of purchase must be supplied to Seller to validate warranty. This warranty is valid only if equipment is properly installed, started-up and checked out by the dealer or Victory authorized Service agent.

Removal or alteration of the serial/data plate from any equipment shall be deemed to release Seller from all warranty obligations or any other obligations, expressed or implied.

This warranty does not cover Thermostat or Defrost Timer calibration and/or adjustment, freight damage, normal maintenance items outlined in Owner's Manual, adjustment of door mechanisms or replacement of light bulbs, fuses or batteries.

Any repairs or replacement of defective parts shall be performed by Seller's authorized service personnel. Seller shall not be responsible for any costs incurred if the work is performed by other than Seller's authorized service personnel. Reimbursement claims for part(s) or labor service costs must be made in writing. Model, cabinet serial numbers and installation location must be shown on the claim. A receipt from the servicing agency must accompany the claim, together with full details of the service problems, diagnosis and work performed. Victory reserves sole discretion whether further documentation on a claim is to be submitted.

Seller shall not be liable for consequential damages of any kind which occur during the course of installation of equipment, or which result from the use or misuse by Buyer, its employees or others of the equipment supplied hereunder, and Buyer's sole and exclusive remedy against Seller for any breach of the foregoing warranty or otherwise shall be for the repair or replacement of the equipment or parts thereof affected by such breach.

The foregoing warranty shall be valid and binding upon Seller if and only if Buyer loads, operates and maintains the equipment supplied hereunder in accordance with the instruction manual provided to Buyer. Seller does not guarantee the process of manufacture by Buyer or the quality of product to be produced by the equipment supplied hereunder and Seller shall not be liable for any prospective or lost product or profits of Buyer.

THE FOREGOING WARRANTY IS EXCLUSIVE AND IN LIEU OF ALL OTHER EXPRESS AND IMPLIED WARRANTIES WHATSOEVER. SPECIFICALLY THERE ARE NO IMPLIED WARRANTIES OF MERCHANTABILITY OR OF FITNESS FOR A PARTICULAR PURPOSE.

The foregoing shall be Seller's sole and exclusive obligation and Buyer's sole and exclusive remedy for any action, whether in breach of contract or negligence. In no event shall seller be liable for a sum in excess of the purchase price of the item.

110 Woodcrest Road - Cherry Hill, NJ 08003-0507 - Phone (856) 428-4200 - Fax (856) 428-7299

Victory Service Line is (800) 523-5008

**-OPTIONAL-
ADDITIONAL FOUR YEAR
MOTOR COMPRESSOR WARRANTY**

**ADDITIONAL PROTECTION PLAN FOR MOTOR COMPRESSOR
ONLY**

Victory agrees to reimburse the original purchaser, after the initial twenty (20) month warranty supplied by compressor manufacturer expires, for five (5) years after the date of shipment for the net exchange cost of the replacement motor-compressor less any labor, freight, taxes and handling charges.

The term "original purchaser-user" as used herein shall be deemed to mean that person, firm, association, or corporation for whom the equipment was originally installed.

The term "motor-compressor" as used herein does not include unit base, air or water cooled condenser, receiver, electrical accessories such as relay, capacitors, pressure control, or condenser fan motor assembly, etc. This warranty further does not include any equipment to which said motor-compressor is connected, such as cooling coils, temperature controls, refrigerant metering devices, refrigerant, etc. This warranty shall be void if said motor-compressor in our judgment has been subjected to misuse, negligence, accident or operated contrary to the recommendations specified by the manufacturer or if the serial number has been altered, defaced or removed.

GENERAL CONDITIONS

Performance under this warranty is contingent upon causes beyond our control and we shall not be liable for any default or delay in performance thereunder caused by any contingency beyond our control including war, governmental restrictions or restraints, strikes, fire, floods, short or reduced supply or raw material or discontinuance of the parts or motor compressor assembly by our suppliers.

This warranty applies only to the motor-compressor installed within the continental limits of the United States.

Replacement or repair to the defective motor-compressor is limited to a \$500.00 maximum expenditure during the four year period.

This warranty does not give the owner of the refrigerator or freezer the rights to purchase a complete replacement condensing unit of the same make or another make. It further does not permit the replacement to be made with a motor-compressor of another make unless written approval is authorized.

Expressly excluded from this warranty are damages resulting from spoilage of goods or any other incidental damages inasmuch as this warranty applies only to the replacement of defective motor-compressor.

Failure of the customer to return their registration card containing the name, address, date of installation, model and serial number of the refrigerator or freezer, within 10 days from date of start-up shall void this warranty.

PROCEDURE FOR OBTAINING REPLACEMENT COMPRESSORS IN WARRANTY

Changes in engineering standards cause variations in compressor specifications. These changes are brought about by our upgrading programs and our suppliers engineering product changes. It is impractical for the customer to go to the manufacturer for the replacement compressor. Suppliers have set up wholesaler organizations to handle replacements on a local basis.

The standard O.E.M. (original equipment manufacturers) warranties are for an unconditional 20 months from date of manufacture at their factory. This allows several months for Victory to install a compressor and get the cabinet into the field.

A defective compressor must be taken to a local wholesaler and exchanged for a new one. If the first three digits of the defective compressor serial number shows that it is less than 20 months old, the wholesaler is obligated to give an even exchange.

The additional four year warranty is available from Victory Refrigeration, 110 Woodcrest Road, Cherry Hill, NJ 08003.

If the defective compressor is past 20 months of age, it must be exchanged with the local wholesaler and the service company, dealer, or the customer must temporarily pay for a new compressor, *less any salvage value of the original. A copy of the original wholesale invoice and salvage credit memo, must then be sent to Victory, with the model and serial number of our cabinet. Victory will reimburse them for the net exchange price, less any labor, freight, tax, or handling charges. Reimbursements are not prorated over the five year warranty.

(*Note: Salvage credit applies to Copelamatic units only)

If any difficulties arise beyond those mentioned, please call us directly at 1-800-523-5008.

RETAIN THIS MANUAL FOR FUTURE REFERENCE

NOTICE

Victory (Manufacturer) reserves
the right to change
specifications at any time.

IMPORTANT

Warranty Registration Card Enclosed.
Failure to Properly Register
Equipment Can Void Warranty !!!!

NOTICE

Please Read The Entire Manual
Carefully Before Installation.
If Certain Recommended Procedures Are Not
Followed, Warranty Claims Will Be Denied !!!!

Machine Serial Number _____

Installation Date _____

Victory Refrigeration Service Hotline (800) 523-5008

TABLE OF CONTENTS

	Page
SECTION 1 - DESCRIPTION	1
A. Control and Component Location.....	2
B. Component Function.....	2-3
C. Specification and Dimension Drawings.....	4-5
SECTION 2 - INSTALLATION	6
A. Receiving Shipment.....	6
B. Unpackaging Procedure.....	6
C. Reducing Refrigerator Depth for Narrow Facility Door.....	6-7
D. Rehingeability.....	7-8
E. Locating Your New Storage Refrigerator.....	8
F. Installing Legs or Casters.....	8
G. Leveling.....	9
H. Initial Cabinet Setup	9-10
I. Location of Serial Number/Data Plate	10
J. Electric Supply	10-11
K. Installation Checklist.....	11
SECTION 3 - OPERATION	12
A. Temperature Control.....	12
B. Thermometer Operation.....	12
C. Loading Product.....	12
SECTION 4 - MAINTENANCE	13
A. Cleaning - Proper Detergent Use.....	13
B. Initial Cleaning of Cabinet.....	13
C. Periodic Cleaning	13-15
D. Lubrication.	15
E. Additional Guidelines Regarding Maintenance.....	16
SECTION 5 - TROUBLESHOOTING	17
A. Problem - Possible Cause - Remedy.....	18-19
SECTION 6 - PARTS LIST	20
A. Fig. 6-1 Cabinet & Hinged Metal Door.....	21
B. Fig. 6-1A Hinged Vision Panel Door.....	22
C. Fig. 6-2 Thermometer & Grill.....	23
D. Fig. 6-3 One Section Refrigerator Components	24
E. Fig. 6-4 Two & Three Section Refrigerator Components	25
F. Fig. 6-5 One Section Freezer Components	26
G Fig. 6-6 Two & Three Section Freezer Components	27
H. Fig. 6-7 Shelves & Pilasters.....	28
I. Fig. 6-8 Uprights for Adjustable Type Pan Slides.....	29
J. Fig. 6-9 Adjustable Type Pan Slides	30
K. Fig. 6-10 Steel Rod Pan Slide Racks & Uprights	31
SECTION 7 - ELECTRIC SCHEMATIC	32
A. Refrigerator Wiring Diagram.....	33
B. Freezer Wiring Diagrams.....	34-35

SECTION 1 DESCRIPTION

V-Series Models are Reach-In Models with full length and half length doors on the front



V-Series Two Section Model
Figure 1-1

A. Control and Component Location

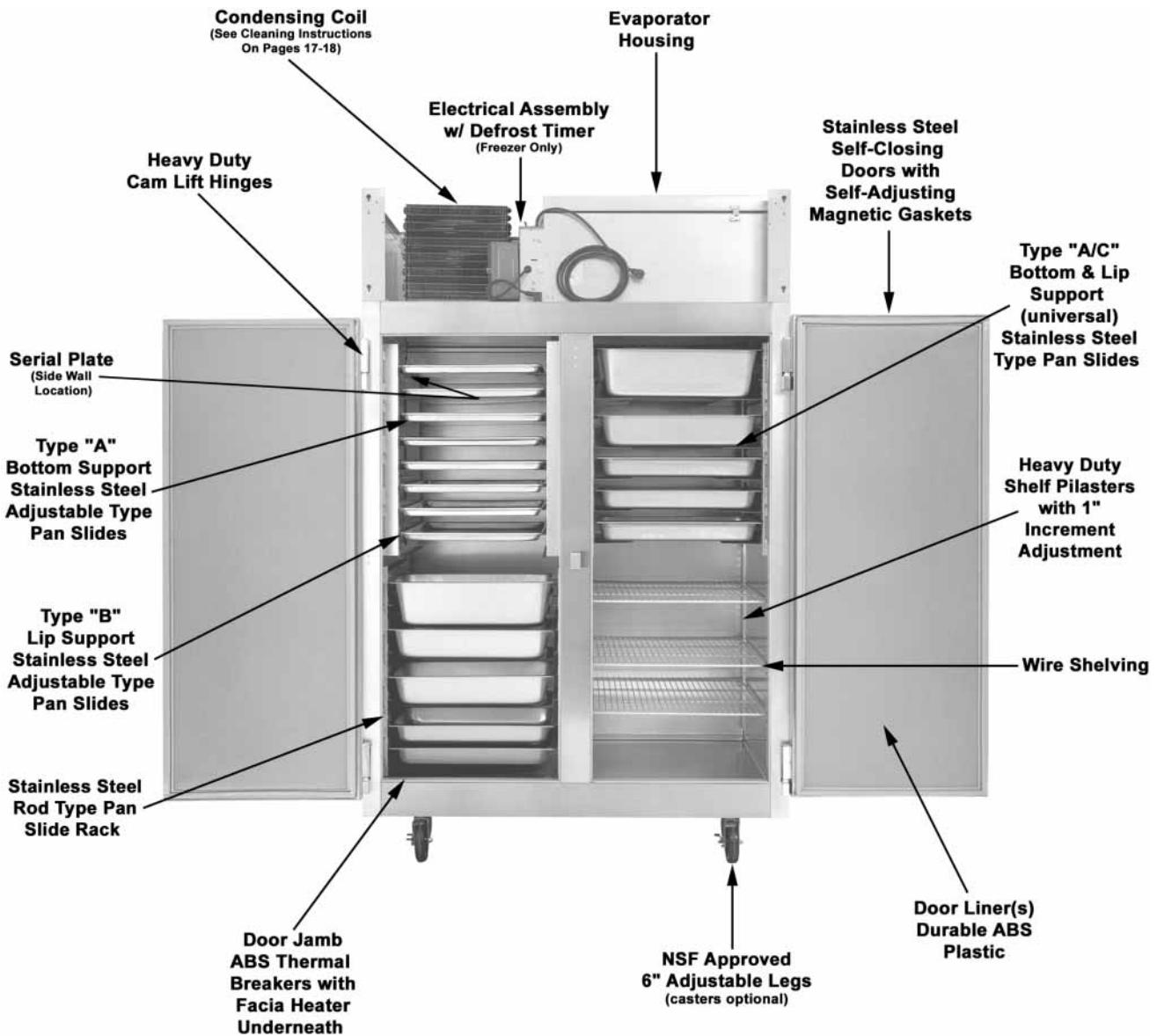


Figure 1-2
Component Location

B. Component Function

1. **Doors.** Each door has a cylinder lock, recessed handle and self-adjusting magnetic gasket.
 - a. **Door Size.** The doors are full length and half length.
 - b. **Door Type.** The doors are stainless steel.
 - c. **Door Hinges.** Cam-lift hinges give the doors their self-closing features.

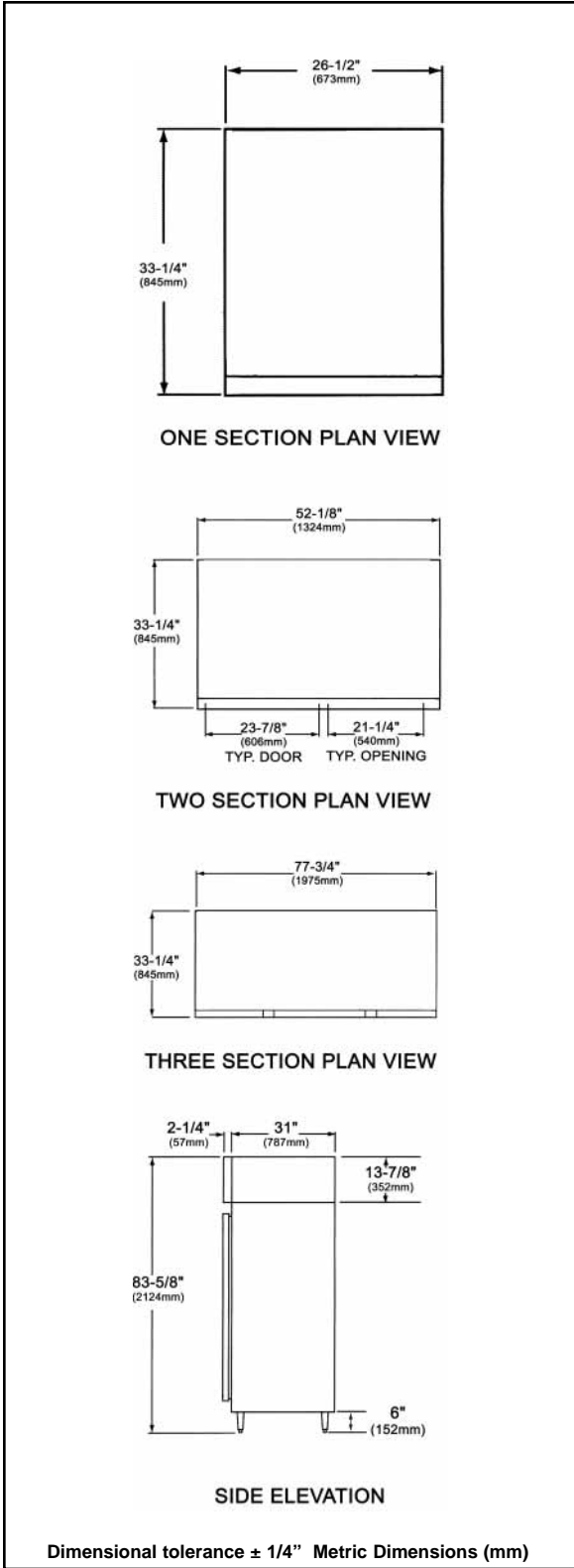
- d. **Door Jambs.** Humidity control wires (Fascia Heaters) located around the door jamb prevent condensation from forming on the cabinet front and are concealed by a high impact non-conductive thermal breaker strip.
 - e. **Door Interior Liner** is constructed of durable ABS material.
2. **Refrigeration System.** The refrigeration system is self-contained capillary tube design.
3. **Shelves and Pans.** (Refer to Figure 1-2 and to the Parts List Section of this manual).
 - a. **Wire shelves.** Heavy-duty epoxy coated wire shelves are adjustable in 1" increments. Shelf clips to support the shelves are inserted into pilasters on the walls.
 - b. **Pan slides.** A wide door opening allows the use of a variety of optional pan slide types for 12" x 20", 18" x 26" and 14" x 18" pans and/or trays.
 - **Stainless Steel Adjustable Type Pan Slides** as shown in Figure 1-2 are adjustable in increments.
 - **Steel Rod Type Pan Slide Racks**, as shown in Figure 1-2, are bottom supported with 2" centers, or lip supported with 1-1/2" centers.
4. **Cabinet.** The cabinet ends and interior are made of brushed aluminum. Fronts are made of stainless steel. Foamed-in-place polyurethane insulation through the cabinet and doors ensures the ultimate in energy efficiency.
5. **Dial Thermometer.** The dial thermometer is standard and is calibrated at the factory.
6. **Thermometer Sensing Bulb.** The temperature sensing bulb is located in the cabinet in the top right hand corner.
7. **Thermostat Control Bulb (Not Shown).** The refrigerator senses evaporator temperature. The freezer senses return air temperature.

C. Specifications and Dimension Drawings

Refrigerators and Freezers Specifications and Dimension Drawings

	One Section	Two Section	Three Section
DIMENSIONS			
Width, Overall	26-1/2" 673 mm	52-1/8" 1324 mm	77-3/4" 1975 mm
Depth, Overall (including handles)	33-1/4" 845 mm	33-1/4" 845 mm	33-1/4" 845 mm
Height, Overall (including adjacent legs)	83-5/8" 2124 mm	83-5/8" 2124 mm	83-5/8" 2124 mm
Depth, Door(s) Open 120 °	56-1/2" 1435mm	56-1/2" 1435mm	56-1/2" 1435mm
Clear Door Width	21-1/4" 540 mm	21-1/4" 540 mm	21-1/4" 540 mm
Clear Full Door Height	54" 1375 mm	54" 1375 mm	54" 1375 mm
CAPACITY			
Related Capacity	21 cu. ft 0.59 cu. m	45.4 cu. ft 1.29 cu. m	69.0 cu. ft 1.95 cu. m
Number of Full Doors	1	2	3
Number of Shelves	3	6	9
Shelf Area	17.1 sq. ft 1.59 sq. m	36.0 sq. ft 3.35 sq. m	54.2 sq. ft 5.0 sq. m
ELECTRICAL / REFRIGERATION			
Cabinet Electrical Voltage	115v/60 Hz/1 ph	115v/60 Hz/1 ph	115v/60 Hz/1 ph (refrigerator) 115v/60 Hz/1 ph (freezer)
Feed Wires	2	2	2(refrigerator) 3(freezer)
Condensing Unit Voltage	115v/60 Hz/1 ph	115v/60 Hz/1 ph	115v/60 Hz/1 ph (refrigerator) 208-230v/60 Hz/1 ph(freezer)
Condensing Unit Size (HP)	1/3 HP (refrigerator) 1/3 HP (freezer)	1/3 HP (refrigerator) 1/2 HP (freezer)	1/2 HP (refrigerator) 3/4 HP (freezer)
Total Amperes	9.4 Amp (refrigerator) 8.5 Amp (freezer)	10.3 Amp (refrigerator) 12.0 Amp (freezer)	11.6 Amp (refrigerator) 12.9 Amp (freezer)
CRATED SHIPPING DATA			
Width	36-1/2" 927 mm	63-5/8" 1616 mm	90-3/4" 2305 mm
Depth	44-3/4" 1137 mm	44-3/4" 1137 mm	44-3/4" 1137 mm
Height	87" 2210 mm	87" 2210 mm	87" 2210 mm
Crated Cubic Feet	82.2 cu. ft 2.33 cu. ft	143.3 cu. ft 4.06 cu. m	204.4 cu. ft 5.79 cu. m
Crated Weight	305 lbs (refrigerator) 315 lbs (freezer)	435 lbs (refrigerator) 465 lbs (freezer)	575 lbs (refrigerator) 620 lbs (freezer)

Refrigerators & Freezers Dimension Drawings:



We reserve the right to change specifications and product design without notice. Such revisions do not entitle the buyer to correspond changes, improvements additions or replacements for previously purchased equipment.

[“End Of Section, Click Here For Table Of Contents”](#)

SECTION 2

INSTALLATION

IMPORTANT:

It is highly recommended that your refrigerator or freezer be installed by an authorized Victory Certified Installer.

A. Receiving Shipment

Upon arrival, examine the exterior of the shipment packaging for any signs of rough handling.

If the cabinet is damaged, it should be noted on the delivery slip or bill of lading and signed to that effect. A claim must be filed immediately against the carrier indicating extent and estimated cost of damage incurred.

All units are performance tested and thoroughly inspected, prior to shipment. Upon leaving the factory, all units are in perfect condition and the carrier signs to this effect.

B. Unpackaging Procedure

1. Split plastic wrap along one of the cardboard posts. Remove and discard all packaging material.

2. **WARNING**

Never, under any circumstances, lay your new refrigerator or freezer down on either it's back, front or sides.

Laying the equipment down will allow compressor oil into the refrigerant lines which can damage the compressor at start-up. If for any reason the unit is laid down, it must be set upright as soon as possible and needs to set for a minimum of 12 hours before starting the compressor. Failure to adhere to the above recommendations will void the warranty.

3. The shipping skid must be removed by tipping the cabinet from side to side. Remove the shipping bolts while the cabinet is held in one direction. Then repeating this procedure when the cabinet is held in the opposite direction.

4. Exercise extreme caution when removing the wooden skid especially when the last bolt is removed, as the skid, if not properly blocked, will fall to the floor with extreme force.

C. Reducing Refrigerator or Freezer Depth For Narrow Facility Doorway

In order to pass through a narrow doorway or restricted area, doors, front grill, hinges, and keeper may be removed to reduce the overall depth of the cabinet to a minimum or 31" deep.

1. Removing Doors

- a. Open door to approximately 90°.
- b. Lift door straight up and off hinges.

2. Front Air Grill

- a. On grills with dial thermometers, disconnect the bracket assembly (thumbscrew) before completely removing the air grill.
- b. Remove 1/4" hex head screw from each case end panel.
- c. Remove the front air grill by lifting the grill vertically. Push up at the bottom of the grill to disengage the lances from the keyhole slots and pull forward.

3. Hinges and Lock Keeper

- a. Refer to Figure 2-3. To remove the hinge base from the cabinet fascia, unscrew the three phillips type machine screws.

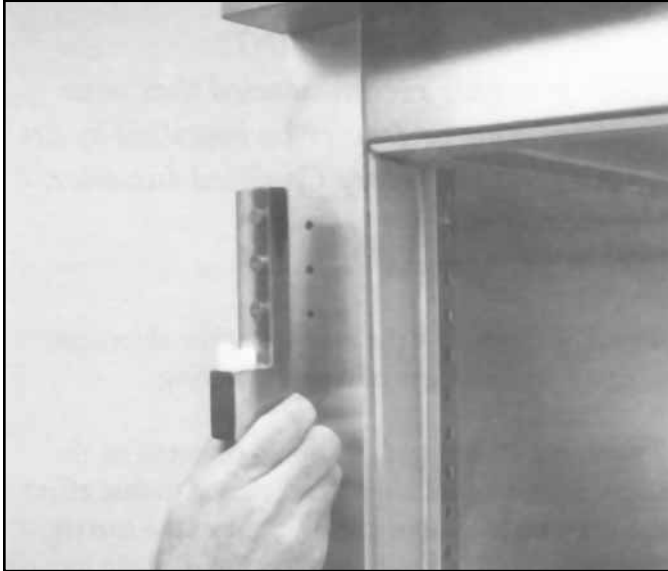


Figure 2-3

- b. To remove lock keeper ("D" shaped metal stamping for lock bolt), use a 5/16" open end wrench. Remove the two #10-32 screws attaching keeper to fascia. Reverse procedure to reinstall. Refer to Figure 2-4.



Figure 2-4
Lock Keeper

D. Rehingeability (One & Two Section Long Door Cabinet)

1. Remove door from cabinet by opening it about 90° and lifting it from its supporting brackets (as mentioned on page 7).
2. Carefully pry the hinge barrel cover from hinge barrel (Fig 2-5).



Figure 2-5

3. Remove hinge barrels from door, turn them upside down and replace on door (Figure 2-6).

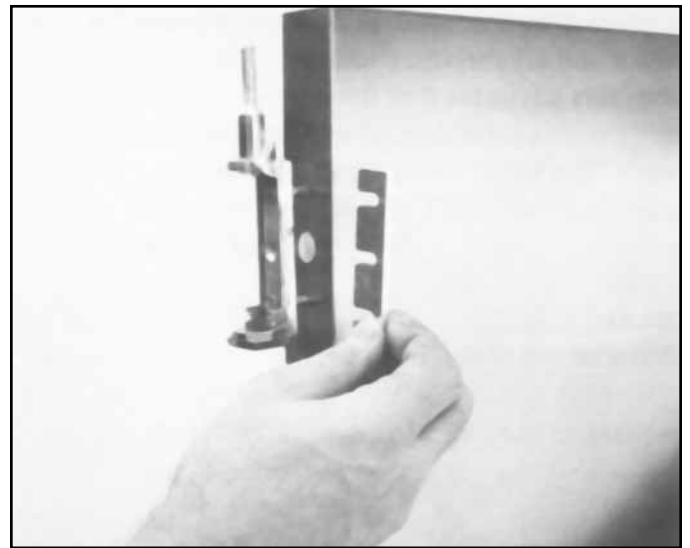


Figure 2-6

SECTION 2-INSTALLATION

NOTE: On two section cabinets, when hinging door on center mullion (left/left or right/right) add shim 3/16" thick aluminum, PN 05312701 between each hinge barrel and door (as shown in Figure 2-6).

4. Pry out white nylon door cam, rotate 180° and push down securely into alignment grooves. Remove hinge bases from front of cabinet by removing phillips head screws (as shown in Fig 2-3).
5. Remove lock keeper using a 5/16 open end wrench (as shown in Fig 2-4).
6. Remount hinge base in new location, using 10-32 mounting screws supplied (as shown in Fig 2-3).
7. Fill old holes with filler plugs provided.

PN 50829101 plug for hinge and keeper holes.
8. Position door so that hinge pins of hinge barrel point downward. Rehinge door on hinge bases.
9. Lock keeper mounting:
 - 1 Section Cabinets - Relocate single keeper to opposite side.
 - 2 Section Cabinets - For all door hinges left/left or right/right, replace original double keeper block with new single keeper blocks. (Two singles needed to replace one double. Part #01368801 single keeper.)

NOTE: Rehinge kit is required when rehinging two door cabinets.

Rehinge kit part number 99148001 is available for all two door cabinets contents of:

- | | |
|---------------------------------------|-------------|
| (6) 3/16" thick aluminum door shims | pn 05312701 |
| (2) door keepers | pn 01368001 |
| (18) hole plugs | pn 50829101 |
| (4) base-fascia hinge shim | pn 05072701 |
| (2) 'F' 10-32 x 5/8" HH screws | pn 50714301 |
| (2) 10-32 x 5/8 HEX WSH tapping screw | pn 50828901 |
| (1) door rehinging instructions | pn 80235301 |

NOTE: To reHINGE half door models and three section long door models, consult factory.

SECTION 2-INSTALLATION

E. Locating Your New Storage Refrigerator or Freezer

The following conditions should be considered when selecting a location for your refrigerator or freezer:

1. **Clearance** - There must be a minimum clearance of 10" between the top of the refrigerator or freezer and the ceiling of the room.
2. **Floor Load** - The floor on which the cabinet will rest must be free of vibration and suitably strong enough to support the combined weights of the cabinet plus the maximum product load which might be placed into it. To estimate the possible product load weight it is generally conceded that a safe figure is 35 pounds for each net cubic foot storage space. For example, a 47 cubic foot cabinet could hold approximately 1645 pounds of product (47 x 35 = 1645).
3. **Ventilation** - The air cooled, self-contained refrigerator or freezer requires a sufficient amount of cool, clean air. Avoid placing the refrigerator near heat generating equipment such as ovens, ranges, heaters, fryers, steam kettles, etc., and out of direct sunlight. Avoid locating the self-contained refrigerator in an unheated room, or where the room temperature may be below 55°F.

F. Installing Legs or Casters

Refrigerators and Freezers are shipped with legs or casters. Legs and casters are the 1/2" single stud mounted type.

Legs require no tools for installation. Simply screw them into the threaded holes located on the case bottom.

As for casters, first screw them into the threaded holes located on the case bottom by hand. Once the caster cannot be turned, take a 3/4" box wrench and tighten the nut in between the mounting plate and wheel of the caster until it is snug.

Tilt the cabinet in one direction approximately eight inches and block it securely to keep it from falling. Use several pieces of 2 x 4 lumber or other suitable material. Screw the two left or right legs in snug. Repeat this procedure to install the other legs with the case bottom.

WARNING

***Never, Under Any Circumstances,
Lay Your New Refrigerator or Freezer
Down On Either It's Back, Front or Sides.***

G. Leveling

Cabinets must be leveled when installed. This is accomplished by rotating the foot of the leg with an adjustable wrench. Cabinets with casters can be leveled by using large flat washers. Failure to level your cabinet may result in doors not sealing, closing properly or condensate water not draining properly.

H. Initial Cabinet Set-Up

Cabinets are shipped with shelves or pan slides. These items are secured to the rear of the cabinet directly on the wood skid. Two (2) keys are supplied per unit and are taped to the door front. An additional key is taped to the top of the air grill.

1. Cleaning Cabinet

CAUTION:

DO NOT Use Abrasive Cleaning Solvents.

Follow requirements of local health authorities. Never scour any part of your new cabinet. Scouring powders or chemicals may cause damage by scratching or dulling the surface finish. Prior to placing your new refrigerator and all shelves, pans and slides into operation, it is advisable that the interior be washed thoroughly with a mild detergent and water solution. Rinse with clear water and a sanitizing solution. Allow cabinet to air dry.

2. Installing Shelves

All cabinets with shelves are supplied with pilasters and shelf clip supports. The pilasters have 3/8" square openings on 1" centers. Shelves are easily installed by first inserting the shelf support clips into the pilasters. Insert the clips as shown in Figure 2-7. The clips fit tightly so it may be necessary to push the clips into their holes. Align the shelf so that the smaller fill wires run from front to rear and rest the shelf on the clips.

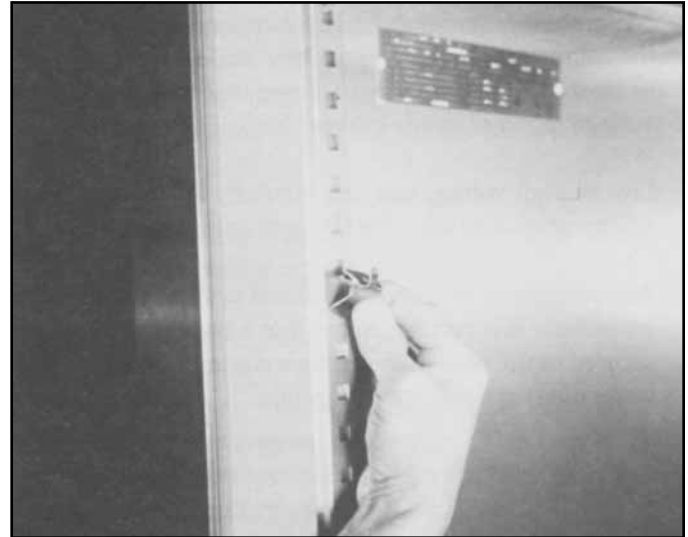


Figure 2-7
Installing Shelf Clip Supports Into Pilasters

3. Pan Slides (Optional)

a. Stainless Steel Angle Type Pan Slides (Refer to Figure 2-8)

Cabinets may be supplied with removable stainless steel angle pan slides, and are available in the following:

- Type "A" for one 18" x 26" pan or one 14" x 18" pans, Bottom Support
- Type "B" for one 18" x 26" pan or one 14" x 18" pans, Lip Support
- Type "C" for two 12" x 20" pans, Lip Support
- Type "A/C" for:
 - (1) 18" x 26" pan, Bottom Support
 - (2) 12" x 20" pan, Bottom Support
 - (1) 14" x 18" pan, Bottom Support

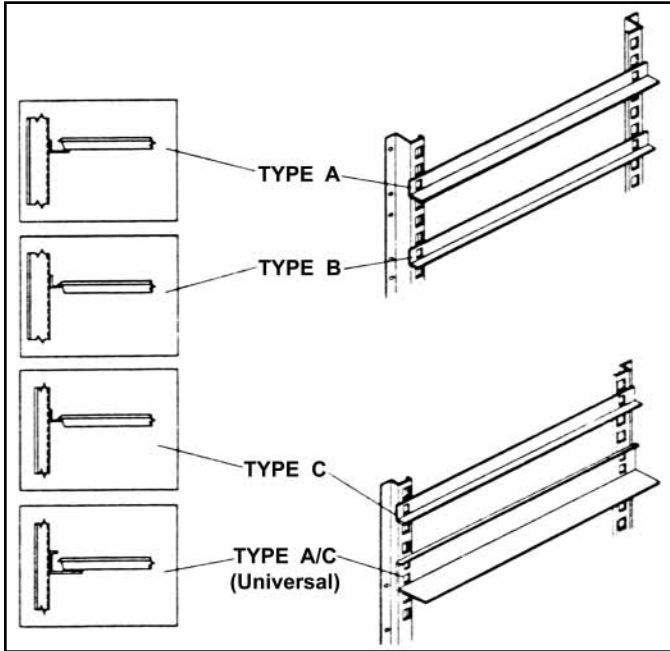


Figure 2-8
Angle Type Pan Slides

The appropriate mounting uprights are already installed, when ordered with your cabinet from the factory. Pan slides cannot be attached to the standard shelf pilaster. Pan slide uprights have 1/2" square holes on 1" centers.

To install an individual slide, locate the appropriate square holes at the desired height. A complete section of slides should be installed by starting at the bottom. Insert tabs of the slide into the uprights and apply pressure in a downward direction until the tab fully engages the upright (refer to Figure 2-9).



Figure 2-9
Installing Stainless Steel Angle Type Pan Slides

b. Steel Rod Type Pan Slide Racks (Refer to Figure 2-10)

Steel rod type pan slide racks are also available. They are designed to accommodate 18" x 26" sheet pans as follows:

- Bottom Support Pan Slide Rack on 2" centers
- Lip Support Pan Slide Rack on 1-1/2" centers

Uprights for mounting the steel rod type pan slide racks are factory installed.

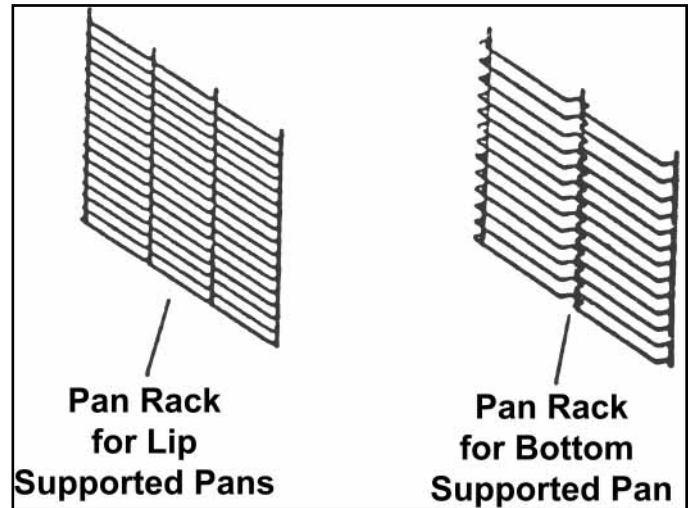


Figure 2-10
Steel Rod Type Slides

NOTE: Either pan rack can be used on any of one, two or three section refrigerators.

I. Location of Serial Number/Data Plate

The serial data plate is mounted on the upper left interior wall (see Figure 1-2).

J. Electric Supply

The wiring should be done by a qualified electrician in accordance with local electrical codes. **A separate ground wire must be supplied for all installations.** A properly wired refrigerator or freezer will assure proper operation. Electrical supply requirements are on the cabinet serial/data plate. It is recommended that a direct, properly protected line of the proper size wire be installed from the main supply to your refrigerator or

J. Electric Supply (continued)

freezer. It is most important that a voltage reading be made at the compressor-motor electrical connections, or as close to the compressor- motor as possible, while the refrigerator or freezer is in operation, to assure that the correct voltage required by the compressor is being supplied.

All refrigerator or freezer electrical systems are internally grounded.

K. Installation Checklist

After the cabinet has been installed, leveled and cleaned as described in the preceding paragraphs, refer to the following checklist prior to start-up.

- Full voltage of the correct type, on a line not affected by the operation of other electrical appliances, must be available for proper operation. Condensing units are designed to operate with a voltage fluctuation of plus or minus 10% of the voltage indicated on the cabinet electrical data plate. Burn-out of a condensing unit due to exceeding the high or low voltage limits will void the factory warranty.
- Leak check all exposed refrigeration line connections. Make sure refrigeration lines are not dented, kinked or rubbing.
- Check condenser fan for freedom to rotate without striking any stationary members.
- Cabinet must be properly leveled.
- **Do Not** become alarmed if a trace of freon gas is detected in the internal cabinet air. This may be due to refrigerant used in expanding the foam insulation used in this cabinet.

NOTE: *All motors are lifetime oiled and sealed. All self-contained models are shipped from the factory with the service valves opened ready for operation.*

When ordering replacement parts, you must include the complete cabinet model and serial numbers.

SECTION 3

OPERATION

A. Temperature Control

Temperature control should be set to maintain a temperature of 38°F (3.3°C) to 40°F (4.4°C) for refrigerators, and 0°F (-17°C) to -5°F (-20.5°C) for freezers.

B. Thermometer Operation

The thermometer sensing bulb is located so that opening the door for even a brief period of time may cause the thermometer to indicate danger. The recovery rate, or the length of time required for the thermometer to indicate safest temperature is also rapid (usually a few minutes).

The length of time required to remove the “heat” admitted due to prolonged or frequent door openings, or the “heat” from a product load is dependent upon several factors. One is the amount of heat introduced into the cabinet due to duration and frequency of door openings; another is the temperature and size of the load being refrigerated. For example, placing a hot load of dough in a refrigerator will definitely cause the thermometer display to go into and remain in the “danger zone” for a prolonged period of time. This is normal and must be expected. However, you should be concerned if the thermometer indicates danger and the door(s) have **NOT** been opened, or a warm product load has **NOT** been placed in the refrigerator. This may indicate a malfunction.

C. Loading Product

After the refrigerator or freezer have reached the proper storage temperatures, food may be loaded.

***Note:** Continued use of this equipment will allow you to become familiar with its operation and functions.



Figure 3-1

[“End Of Section, Click Here For Table Of Contents”](#)

SECTION 4 MAINTENANCE

A. Cleaning and Proper Detergent Use

Follow requirements of local health authorities.

1. Use a detergent-sanitizer of a mild detergent (neutral) or mildly alkaline (recommended for metal surfaces) followed by a sanitizing rinse solution. These chemicals are necessary to kill or deactivate the micro-organisms on the surface areas in contact with stored food. Choose these chemicals carefully. Some are toxic and should only be used on non-food surfaces.

**CAUTION:
DO NOT USE ABRASIVE CLEANING SOLVENTS!!!!**

Never scour any part of your refrigerator. Scouring powders or chemicals may cause damage by scratching or dulling the gleaming surface finish. Use alkaline chlorinated or non-chloride cleaners.

2. Avoid cleaners containing quaternary salts, as they also can attack stainless steel and cause pitting and rusting.
3. When using these products, it is important to follow label directions exactly to obtain the correct cleaning action.

B. Initial Cleaning of Cabinet

**CAUTION:
DO NOT USE ABRASIVE CLEANING SOLVENTS!!!!**

Prior to placing your new refrigerator into operation, it is advisable that the interior be washed thoroughly with a mild detergent and water solution. Rinse with clear water and a sanitizing solution. Allow cabinet to dry.

C. Periodic Cleaning

It is more convenient to clean your refrigerator or storage freezer when the product load is at its lowest point.

1. Daily Exterior Surface Cleaning

Cleaning and sanitizing

- a. Dip sponge in cleaning solution, wipe down surfaces.
- b. Polish with clean soft cloth. Always wipe in direction of grain. Once a week a film cutting agent may be used for metal finishes to maintain a shining surface.

2. Weekly Interior Accessory Cleaning

Interior cleaning is recommended a minimum of once a week to maintain good sanitary conditions and to eliminate odors.

- a. Disconnect power by switching circuit breaker to "OFF".
- b. Remove all food to protective temporary storage.
- c. Open door and allow warm room air to enter cabinet.
- d. Remove all accessories (shelves, racks, etc.) from within the cabinet and scrub with a detergent solution and a nylon bristled brush.
- e. When storage compartment(s) is sufficiently warm, remove all loose food particles.
- f. Scrub all interior surfaces with warm detergent solution 100 °F - 120°F (38°C - 39°C) and a nylon bristled brush. Scrub the floor and ceiling surfaces of the interior walls, corners, inner door surface, gaskets, and latches.
- g. Rinse with warm clean water using a sponge.
- h. Remove excess rinse water with sponge.
- i. Soak in a final rinse of sanitizing solution for recommended period of time.
- j. Allow to air dry.
- k. Return accessories to unit.
- l. Return power (electrical) to unit by resetting circuit breaker.
- m. Return food to cabinet when temperature indicator reaches safety zone.

3. Once Every Three Months, Condenser Maintenance

Cleaning is recommended at least once every three (3) months. However, once a month is recommended when unit is located near cooking equipment which produces grease laden vapors, i.e.: fryers, grills, steam kettles, etc.

- a. Disconnect power by switching circuit breaker to "OFF" position.
- b. Remove the front grill by removing the two (2) screws on the inside of the grill at each end, then lift the panel up and straight out. Place the panel on top of the cabinet being very careful not to damage or kink the thermometer capillary line.

4. Once Every Three Months, Condenser Maintenance (continued)

- c. Use a vacuum cleaner with proper brush attachments, to clean the condenser, compressor-motor and related parts (refer to Figure 4-1).
- d. In extreme cases of dust and grease buildup, the condenser fins may require blowing out with compressed air or cleaning with a degreasing agent.
- e. Turn circuit breaker to "ON" position.

NOTE: *The air cooled condensing unit depends upon the amount of air passing through the condenser. Grease, lint and dust accumulation reduces required air flow. The refrigerator will consume less current and operate more efficiently if the condenser is kept clean.*

WARNING!!!!

Failure to keep condenser clean may cause premature failure of compressor-motor which will NOT be covered by warranty.

***Note:** Dirty condenser coils are the main reason for service calls. Clean condenser coils will keep your cabinet running efficiently. A preventive maintenance contract will benefit your operation by minimizing downtime and service calls.

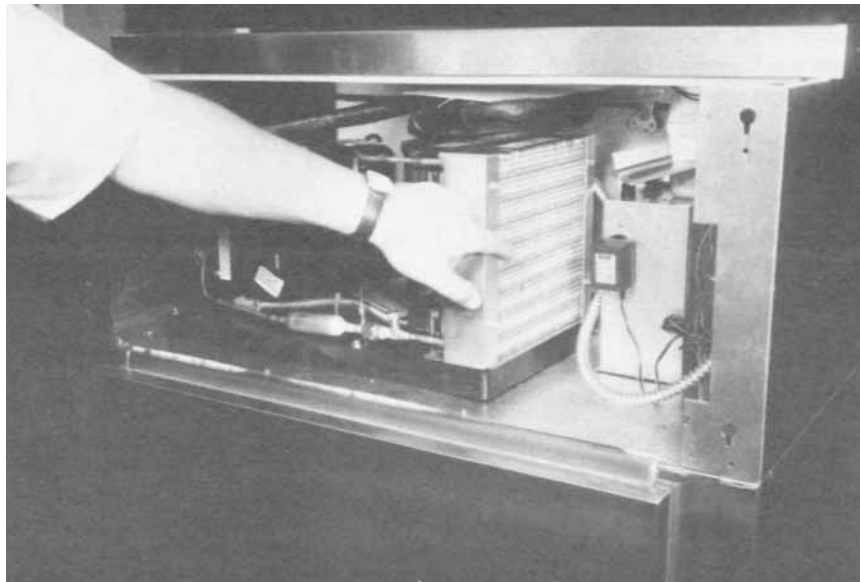


Figure 4-1

D. Lubrication

Unless otherwise specified, all "Victory" refrigerators are equipped with oilless type motors. The compressor-motor is a sealed unit and is constantly lubricated when in operation. The condenser and the evaporator motors are equipped with "Lifetime" oiled bearings. These bearings are oiled at the factory and need never to be oiled.

E. Additional Guidelines Regarding Maintenance

1. Avoid the Three Corrosives

There are three (3) corrosives capable of breaking down stainless steel and will cause damage to the cabinets interior and exterior surfaces. **DO NOT USE** the following:

- a. **Mechanical Abrasion** - are those things that scratch steel's surface. Steel pads, wire brushes and scrapers are examples.
- b. **Water** - comes in degrees of hardness. Depending on what part of the country you live in, you may have hard or soft water. Spots may be left by hard water. When hard water is heated, deposits are left behind that will breakdown and rust stainless steel. Deposits from food preparation and service can also contribute to breakdown without proper removal.
- c. **Chlorides** - are in water, food and table salt just to name a few. The worst of chlorides come from household and industrial cleaners.

2. Use of Proper Tools and Cleaning Methods

When cleaning your cabinet, remember to use non-abrasive tools. Soft cloths and plastic scouring pads will not harm stainless steel. Stainless Steel pads can be used, but scrubbing motion must be in direction of polishing marks.

Some stainless steel's polishing lines or "grain" are clearly visible. Always scrub in a motion parallel to the polishing lines as previously mentioned. If the polishing lines cannot be seen, use only a soft cloth or plastic scouring pad.

3. Treat Hard Water

Softening hard water can substantially reduce deposits. Certain filters can be installed to remove corrosive elements. If unsure of proper water treatment, contact a local water treatment specialist.

SECTION 5 TROUBLESHOOTING

TROUBLESHOOTING & SERVICING REFRIGERATION SYSTEM

PROBLEM	POSSIBLE CAUSE	REMEDY
1. Condensing unit fails to start - no hum.	<ol style="list-style-type: none"> Line disconnect switch open. Fuse removed or blown. Overload protector tripped. Control stuck in open position. Wiring improper or loose. 	<ol style="list-style-type: none"> Close start or disconnect switch. Replace fuse. Determine reason and correct/replace control. Repair or replace control. Check wiring against diagram.
2. Compressor fails to start - hums and trips on overload protector.	<ol style="list-style-type: none"> Improperly wired. Low voltage to unit. Starting capacitor defective. Relay failing to close. Compressor motor has a winding open or shorted. Internal mechanical trouble in compressor. 	<ol style="list-style-type: none"> Check wiring against diagram. Determine reason and correct. Determine reason and replace. Determine reason and correct/replace if necessary. Replace compressor. Replace compressor.
3. Compressor starts, but fails to switch off of "start" winding.	<ol style="list-style-type: none"> Improperly wired. Low voltage to unit. Relay failing to open. Run capacitor defective. Excessively high discharge pressure. Compressor motor has a winding open or shorted. Internal mechanical trouble in compressor. 	<ol style="list-style-type: none"> Check wiring against diagram. Determine reason and correct. Determine reason and correct/replace if necessary. Determine reason and replace. Check discharge shut-off valve, possible overcharge, or insufficient cooling on condenser. Replace compressor. Replace compressor.
4. Compressor starts and runs, but short cycles on overload protector.	<ol style="list-style-type: none"> Additional current passing through overload protector. Low voltage to unit (or unbalanced if three phase.) Overload protector defective. Run capacitor defective. Excessive discharge pressure. Suction pressure too high. Compressor too hot - return gas. Compressor motor has a winding shorted. 	<ol style="list-style-type: none"> Check wiring diagram. Determine reason and correct. Check current , replace protector. Determine reason and replace. Check ventilation, restrictions in cooling medium, restrictions in refrigeration system. For salad models, temperature control differential set to close-increase differential. Check refrigerant charge (fix leak) add if necessary. Replace compressor.
5. Compressor runs but short cycles on...	<ol style="list-style-type: none"> Overload protector. Thermostat. High pressure cut-out due to: <ol style="list-style-type: none"> Insufficient air or water supply. Overcharge. Air in system. Low pressure cut-out due to: <ol style="list-style-type: none"> Liquid line solenoid leaking. Compressor valve leak. Undercharge. Restriction in expansion device. 	<ol style="list-style-type: none"> See (4) above. Differential set too close - widen. <ol style="list-style-type: none"> Check air or water supply to condenser-correct. Recover refrigerant and recharge. <ol style="list-style-type: none"> Replace. Replace. Fix leak, add refrigerant. Replace device.
6. Condensing unit operates for prolonged periods or continuously.	<ol style="list-style-type: none"> Shortage of refrigerant. Control contacts stuck or frozen closed. Excessive heat load placed into cabinet. Prolonged or too frequent door openings. Evaporator coil iced. Restriction in refrigeration system. Dirty condenser. Filter dirty. 	<ol style="list-style-type: none"> Fix leak, add charge. Clean contacts or replace control. Allow unit sufficient time for removal of latent heat. Plan or organize schedule to correct condition. Defrost. Determine location and remove. Clean condenser. Clean or replace.

TROUBLESHOOTING & SERVICING REFRIGERATION SYSTEM

PROBLEM	POSSIBLE CAUSE	REMEDY
7. Start capacitor open or shorted blown.	<ol style="list-style-type: none"> 1. Relay contacts not opening properly. 2. Prolonged operation on start cycle due to: <ol style="list-style-type: none"> a. Low voltage to unit. b. Improper relay. c. Starting load too high. 3. Excessive short cycling. 4. Improper capacitor. 	<ol style="list-style-type: none"> 1. Replace relay. 2. <ol style="list-style-type: none"> a. Determine reason and correct. b. Replace. c. Correct by using pump down arrangement if necessary. 3. Determine reason for short cycling (see 5 above) and correct. 4. Determine correct size and replace.
8. Run capacitor open, shorted or blown.	<ol style="list-style-type: none"> 1. Improper capacitor. 2. Excessively high line voltage (110% of rated-max.) 	<ol style="list-style-type: none"> 1. Determine correct size and replace. 2. Determine reason and correct.
9. Relay defective or burned out.	<ol style="list-style-type: none"> 1. Incorrect relay. 2. Incorrect mounting angle. 3. Line voltage too high or too low. 4. Excessive short cycling. 5. Relay being influenced by loose vibrating mounting. 6. Incorrect run capacitor. 	<ol style="list-style-type: none"> 1. Check and replace. 2. Remount relay in correct position. 3. Determine reason and correct. 4. Determine reason (see 5 above) and correct. 5. Remount rigidly. 6. Replace with proper capacitor.
10. Product zone temperature too high.	<ol style="list-style-type: none"> 1. Control setting too high. 2. Inadequate air circulation. 	<ol style="list-style-type: none"> 1. Reset control. 2. Rearrange product load to improve air circulation.
11. Suction line frosted or sweating.	<ol style="list-style-type: none"> 1. Overcharge of refrigerant. 2. Evaporator fan not running. 3. If remote model, expansion valve stuck open. 4. If remote model expansion valve is passing excess refrigerant or is oversized. 	<ol style="list-style-type: none"> 1. Correct charge. 2. Determine reason and correct. 3. Replace. 4. Readjust valve or replace with properly sized valve.
12. Liquid line frosted or sweating.	<ol style="list-style-type: none"> 1. Restriction in dehydrator or strainer. 2. Liquid shut-off (king valve) partially closed. 	<ol style="list-style-type: none"> 1. Replace part. 2. Open valve fully.
13. Noisy condensing unit.	<ol style="list-style-type: none"> 1. Loose parts or mounting. 2. Tubing rattle. 3. Bent fan blade causing vibration. 4. Fan motor bearings worn. 	<ol style="list-style-type: none"> 1. Find and tighten. 2. Reform to be free of contact. 3. Replace blade. 4. Replace motor.

“End Of Section, Click Here For Table Of Contents”

SECTION 6 PARTS LIST

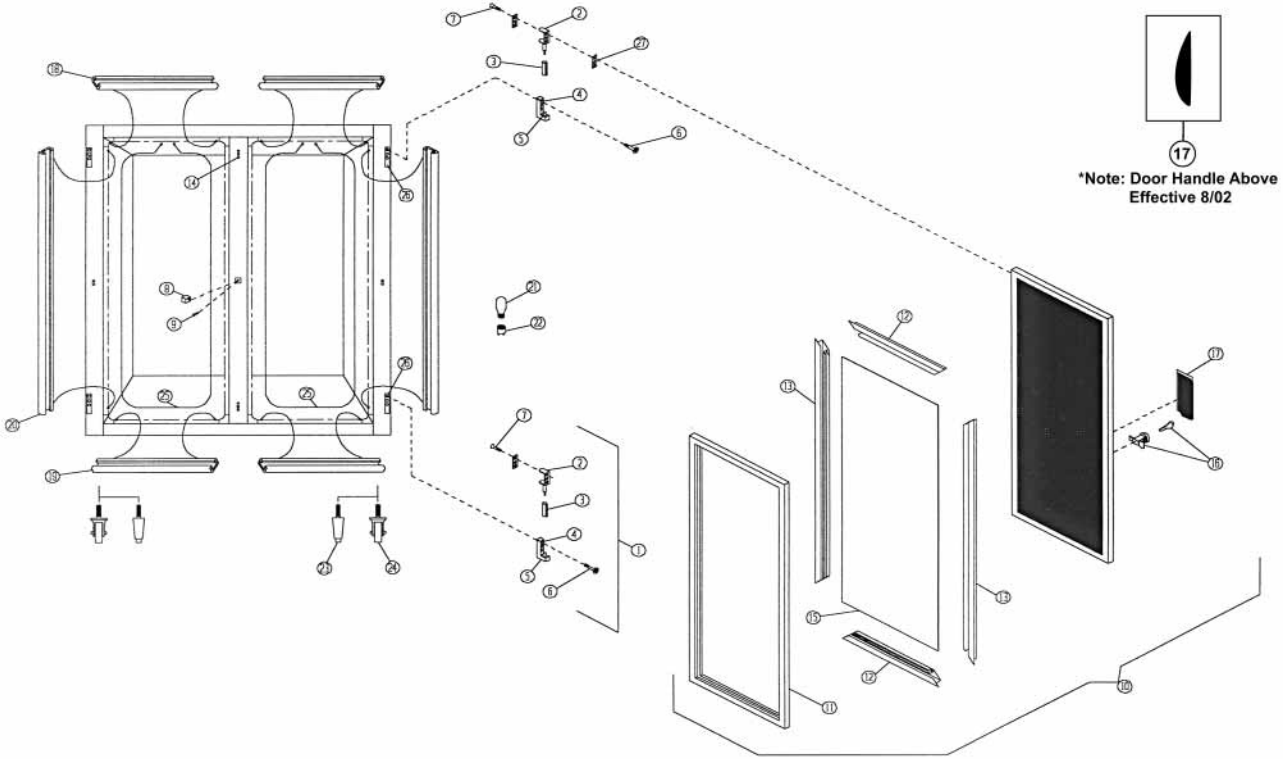
	Pages
Figure 6-1 Cabinet and Hinged Metal Door Parts	21
Figure 6-1A Hinged Vision Panel Door.....	22
Figure 6-2 Thermometer and Grill	23
Figure 6-3 One Section Refrigerator Components.....	24
Figure 6-4 Two & Three Section Refrigerator Components.....	25
Figure 6-5 One Section Freezer Components	26
Figure 6-6 Two & Three Section Freezer Components.....	27
Figure 6-7 Shelves & Pilasters.....	28
Figure 6-8 Uprights for Adjustable Type Pan Slides	29
Figure 6-9 Adjustable Type Pan Slides	30
Figure 6-10 Steel Rod Pan Slide Racks and Uprights	31

[\(Click Here to Return to Main Table of Contents\)](#)

SECTION 6-PARTS LIST

**Figure 6-1
Cabinet & Hinged Metal Door Parts**

SECTION 6-PARTS LIST



Item	Description	Part Number	Quantity
1	Door Hinge Assembly	10685101	2 per door
2	Hinge Barrel	50520102	1 per hinge assembly
3	Hinge Cover	50520105	1 per hinge assembly
4	Hinge Base	50520103	1 per hinge assembly
5	Hinge Cam	50520106	1 per hinge assembly
6	Hinge Base Screw	50678801	3 per hinge assembly
7	Hinge Barrel Screw	50678801	2 per hinge assembly
8	Keeper, Single Door	01368801	1 per one & three section unit
8	Keeper, Double Door	01368802	1 per two & three section unit
9	Screw, Door Keeper	50585702	2 per door keeper
10	Door Assembly, Full Door (RH) - * Effective for Cabinets Built Prior to 8/5/02	10791102	per all standard section units
10	Door Assembly, Full Door (RH) - * Effective for Cabinets Built On or After 8/5/02	10791109	per all standard section units
10	Door Assembly, Full Door (LH) - * Effective for Cabinets Built Prior to 8/5/02	10791101	1 per two & three section units
10	Door Assembly, Full Door (LH) - * Effective for Cabinets Built On or After 8/5/02	10791110	1 per two & three section units
10	Door Assembly, Half Door (LH)	10794105	* available upon request *
10	Door Assembly, Half Door (RH)	10794106	* available upon request *
11	Door Gasket, Full - * Effective for Cabinets Built Prior to 8/5/02	50827801	1 per full length metal door
11	Door Gasket, Full - * Effective for Cabinets Built On or After 8/5/02	50879501	1 per full length metal door
11	Door Gasket, Half - * Effective for Cabinets Built Prior to 8/5/02	50827802	* available upon request
11	Door Gasket, Half - * Effective for Cabinets Built On or After 8/5/02	50879502	* available upon request *
12	Retainer, Door Gasket (Top & Bottom)	50827701	2 per full & half length door
13	Retainer, Door Gasket (Sides for Full Door)	50827601	2 per full length door
13	Retainer, Door Gasket (Sides for Half Door)	50827602	* available upon request *
14	Plugs	50829101	* available upon request *
15	Door Pan, Full	50827901	1 per full length door
15	Door Pan, Half	50827902	* available upon request *
16	Lock & Key Set	50597107	1 per door
17	Door Handle - * Effective for Cabinets Built Prior to 8/5/02	50828001	1 per door
17	Door Handle - * Effective for Cabinets Built On or After 8/5/02	50867701	1 per door
18	Breaker Strip, Top	90317003	1 per section
19	Breaker Strip, Bottom	90317002	1 per section
20	Breaker Strip, Side (Full & Half)	90317001	2 per section
21	Bulb, Light	50828801	1 per unit
22	Socket, Light	50826601	1 per unit
23	Legs (Black in Color)	50671801	4 per unit
24	Casters, 5" Swivel (with Brake, 6" Overall Height)	50096002	4 per unit
25	Heater Wire, Door Frame	50707501	1 per section
26	Shim, Fascia	50720701	* available upon request *
27	Shim, Door	50538601	* available upon request *

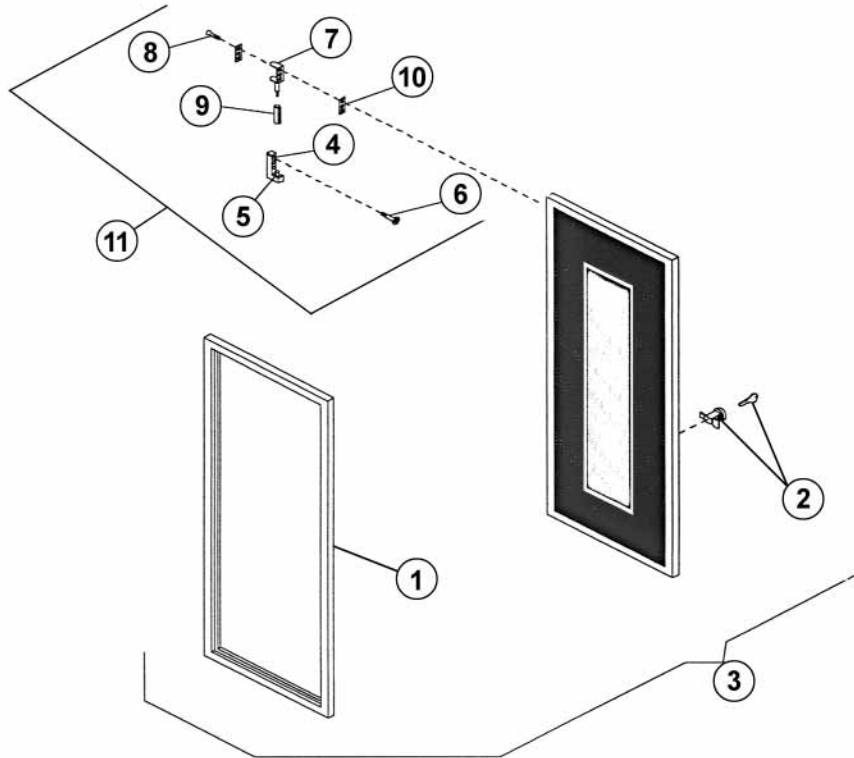
*Note: All field replacement parts may not be stated on this parts list. For additional information or assistance, contact the factory.

["End Of Section, Click Here For Parts Lists Table of Contents"](#)

SECTION 6-PARTS LIST

Figure 6-1A
Hinged Vision Panel Door Parts

SECTION 6-PARTS LIST



Item	Description	Part Number	Quantity
1	Door Gasket, Full - * Effective for Cabinets Built Prior to 8/5/02	50827801	1 per full length door
1	Door Gasket, Full - * Effective for Cabinets Built On or After 8/5/02	50789501	1 per full length door
2	Lock & Key Set	50597107	1 per door
3	Ass'y, Full Door w/ Vision Panel (LH) - * Effective for Cabinets Built Prior to 8/5/02	10791107	1 per cabinet section
3	Ass'y, Full Door w/ Vision Panel (LH) - * Effective for Cabinets Built On or After 8/5/02	10818301	1 per cabinet section
3	Ass'y, Full Door w/ Vision Panel (RH) - * Effective for Cabinets Built Prior to 8/5/02	10791108	1 per cabinet section
3	Ass'y, Full Door w/ Vision Panel (RH) - * Effective for Cabinets Built On or After 8/5/02	10818302	1 per cabinet section
4	Base, Hinge	50520103	1 per hinge assembly
5	Cam, Hinge	50520106	1 per door
6	Base Screw, Hinge	50678801	3 per hinge assembly
7	Barrel, Hinge	50520102	1 per hinge assembly
8	Barrel Screw, Hinge	50678801	2 per hinge assembly
9	Cover, Hinge	50520105	1 per hinge assembly
10	Shim, Door	05312701	*available upon request
11	Hinge Assembly, Top or Bottom	10685101	2 per door

(*NOTE: WARRANTY DOES NOT COVER GLASS BREAKAGE! THE GLASS PANEL IS NOT SERVICEABLE. ENTIRE DOOR MUST BE REPLACED.)

Vision panel door is interchangeable with standard solid door. Door is left / right reversible by inverting hinge mounting (*refer to pages 8-9 of this manual for rehinging instructions).

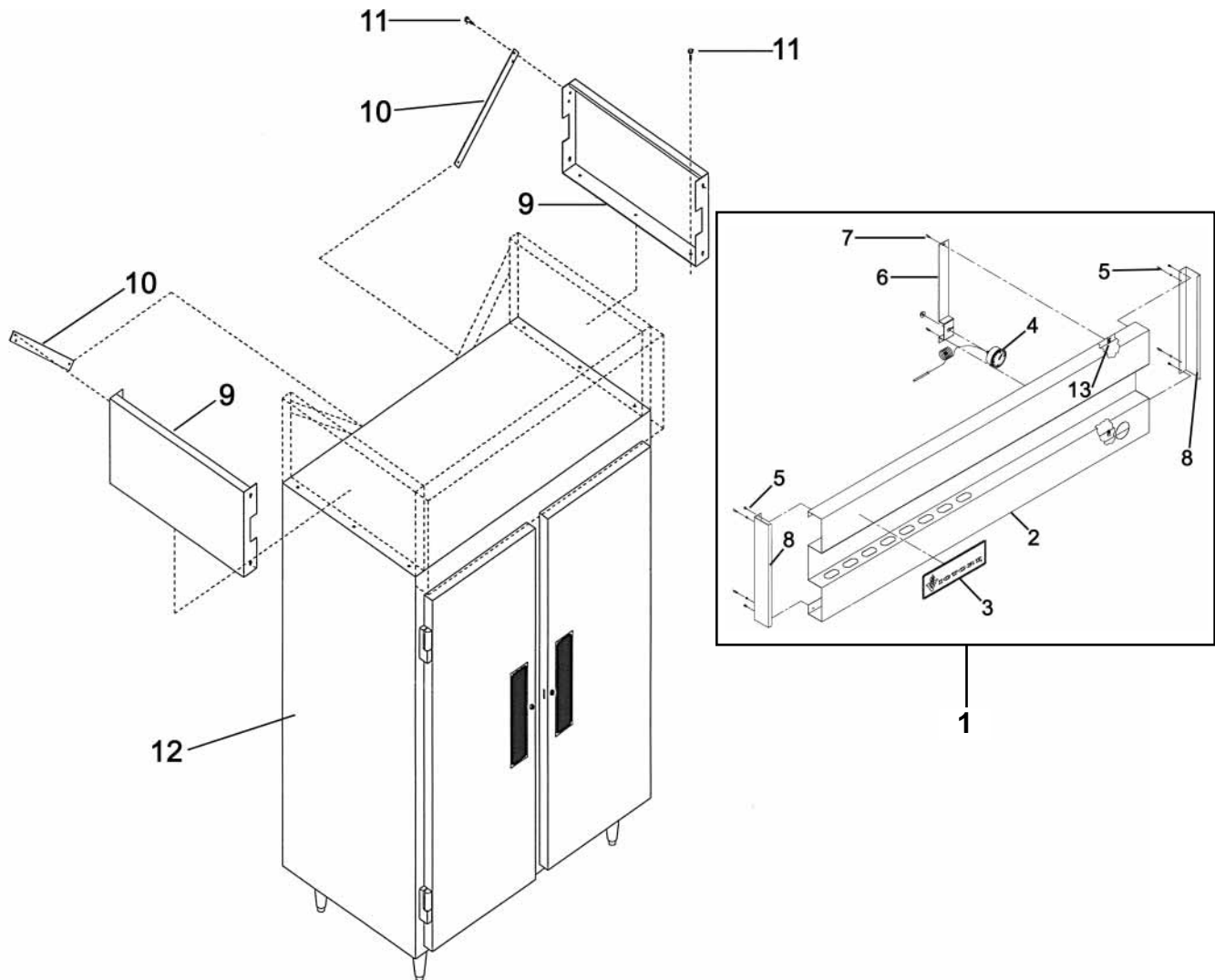
**Vision panel door is intended for operation in maximum 85°F, 55% RH environment for refrigerated case (38°F) applications only!*

[“End Of Section, Click Here For Parts Lists Table of Contents”](#)

SECTION 6-PARTS LIST

Figure 6-2
Thermometer & Grill

SECTION 6-PARTS LIST



Item	Description	Part Number	Quantity
1	Front Grill Assembly, 1 Section Refrigerator	10807101	1 per one section refrigerator unit
1	Front Grill Assembly, 2 Section Refrigerator	10807102	1 per two section refrigerator unit
1	Front Grill Assembly, 3 Section Refrigerator	10807103	1 per three section refrigerator unit
1	Front Grill Assembly, 1 Section Freezer	10807104	1 per one section freezer unit
1	Front Grill Assembly, 2 Section Freezer	10807105	1 per two section freezer unit
1	Front Grill Assembly, 3 Section Freezer	10807106	1 per three section freezer unit
2	Grill, Front (1 Section)	05315101	1 per one section refrigerator or freezer
2	Grill, Front (2 Section)	05315201	1 per two section refrigerator or freezer
2	Grill, Front (3 Section)	05315301	1 per three section refrigerator or freezer
3	"Victory" Logo	50853501	1 per all refrigerator or freezer units
4	Thermometer, Refrigerator Dial	50827403	1 per all refrigerators
4	Thermometer, Freezer Dial	50827404	1 per all freezers
5	Screw	50267901	4 per all refrigerator or freezer units
6	Bracket, Dial Thermometer Mounting	05315501	1 per all refrigerator or freezer units
7	Screw, Thumb	50684201	1 per all refrigerator or freezer units
8	Cap End, Grill Panel	50700101	2 per all refrigerator or freezer units
9	Upper Case End	05315601	2 per all refrigerator or freezer units
10	Brace, Upper Case End	05315701	2 per all refrigerator or freezer units
11	Screw	N/A	4 per Upper Case End Brace
12	End Panel, Field Replacement	01333320	2 per all refrigerator or freezer units
13	Nut	50081701	2 per all refrigerator or freezer units

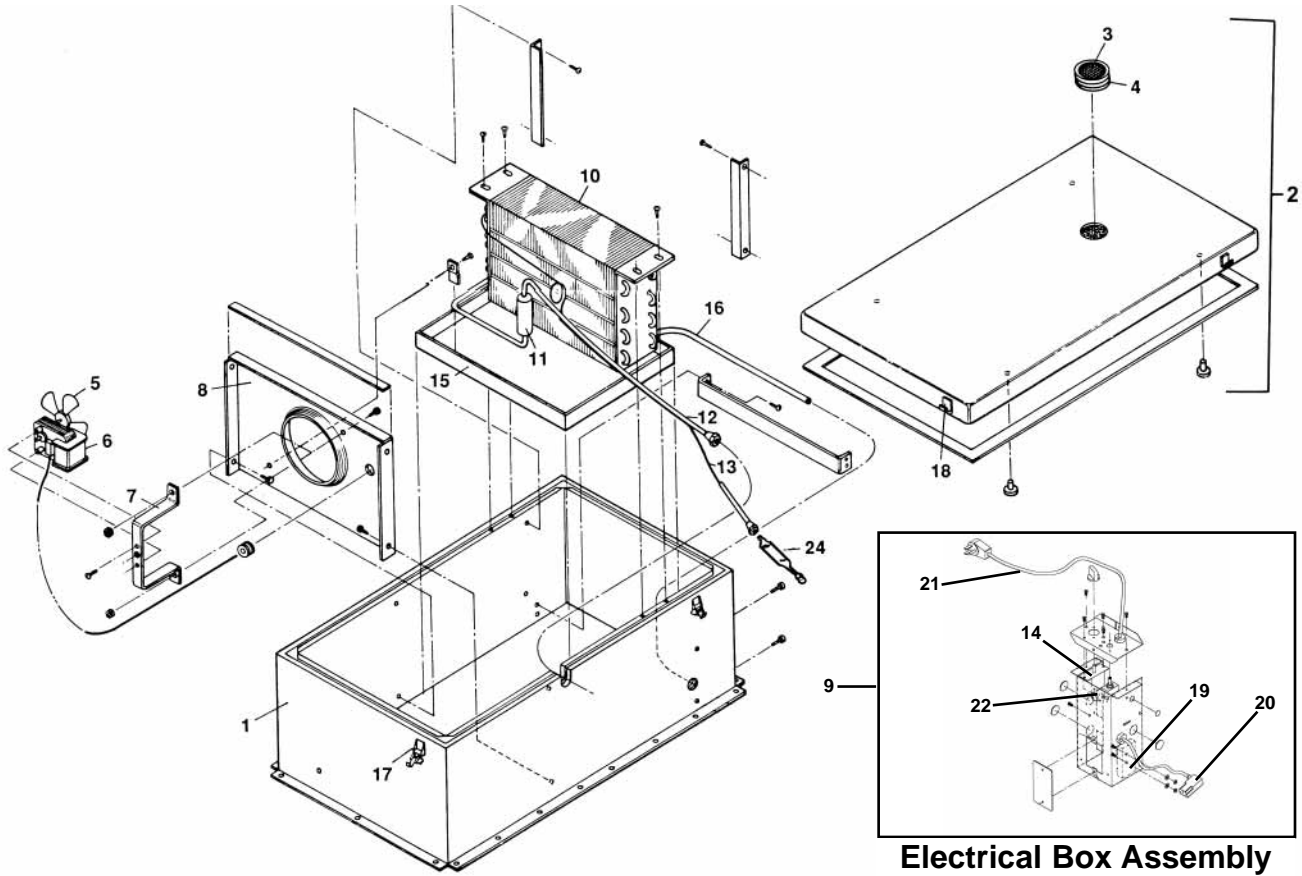
*Note: All field replacement parts may not be stated on this parts list. For additional information or assistance, contact the factory.

["End Of Section, Click Here For Parts Lists Table of Contents"](#)

SECTION 6-PARTS LIST

**Figure 6-3
One Section Refrigerator Components**

SECTION 6-PARTS LIST



Item	Description	Part Number	Quantity
1	Evaporator Housing Assembly	10534201	1
2	Evaporator Housing Assembly Cover	10534102	1
3	Screen, Vent	50177401	1
4	Vent, Breather	50097901	1
5	Fan Blade, Evaporator	50598001	1
6	Fan Motor, Evaporator	50639801	1
7	Bracket, Evaporator Fan Motor	04415201	1
8	Fan Panel	04404803	1
9	Electrical Box Assembly	10806901	1
10	Coil, Evaporator	50617101	1
11	Accumulator	50180701	1
12	Heat Exchanger	10776901	1
13	Capillary Tube	50199002	1
14	Temperature Control	50616201	1
15	Drain Pan, Evaporator	10511103	1
16	Drain Line	50245001	1
17	Latch, Lock	50554302	4
18	Latch, Strike Hook	50554303	4
19	Terminal Board, 1 to 4	50684401	1
20	Cordset, Heater and Light	50836801	1
21	Harness, Cord and Plug 115v/15A	50828201	1
22	Harness, Condenser Unit Receptacle	50819901	1
23	Drain Pan, Condensate (not shown)	04447401	1
24	Liquid Line Dryer	50730801	1
25	Fan Motor, Condenser (not shown)	50193101	1

*Note: All field replacement parts may not be stated on this parts list. For additional information or assistance, contact the factory.

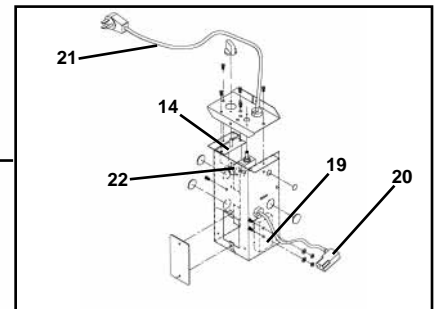
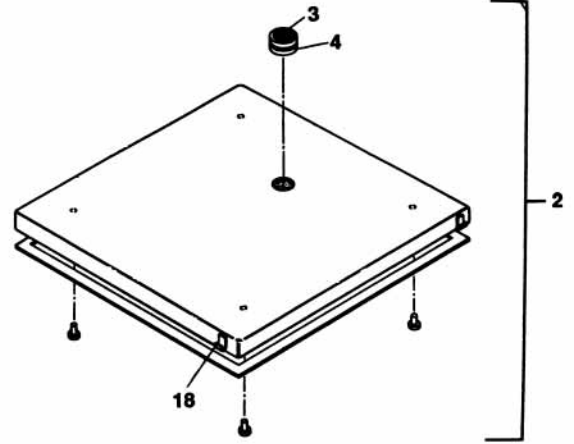
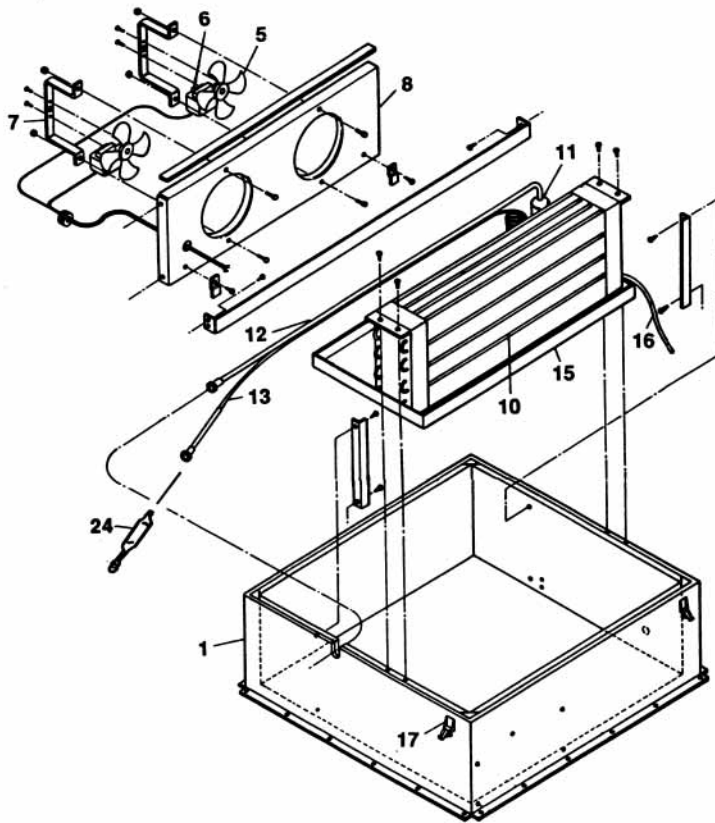
“End Of Section, Click Here For Parts Lists Table of Contents”

SECTION 6-PARTS LIST

Figure 6-4

Two & Three Section Refrigerator Components

SECTION 6-PARTS LIST



Electrical Box Assembly

Item	Description	Part Number	Quantity
1	Evaporator Housing Assembly	10536801	1
2	Evaporator Housing Assembly Cover	10536902	1
3	Screen, Vent	50177401	1
4	Vent, Breather	50097901	1
5	Fan Blade, Evaporator	50598001	2
6	Fan Motor, Evaporator	50639801	2
7	Bracket, Evaporator Fan Motor	04415201	2
8	Fan Panel	04403702	1
9	Electrical Box Assembly, Two Section	10806901	1
9	Electrical Box Assembly, Three Section	10807001	1
10	Coil, Evaporator	50616801	1
11	Accumulator (for Two Section)	50293701	1
11	Accumulator (for Three Section)	50184101	1
12	Heat Exchanger (for Two Section)	10548601	1
12	Heat Exchanger (for Three Section)	10596201	1
13	Capillary Tube (for Two Section)	50197601	2
13	Capillary Tube (for Three Section)	50199001	2
14	Temperature Control	50616201	1
15	Drain Pan, Evaporator	10511104	1
16	Drain Line	50245001	1
17	Latch, Lock	50554302	4
18	Latch, Strike Hook	50554303	4
19	Terminal Board, 1 to 4	50684401	1
20	Cordset, Heater and Light	50836801	1
21	Harness, Cord and Plug 115v/15A, Two Section	50828201	1
21	Harness, Cord and Plug 115v/20A, Three Section	50828202	1
22	Harness, Condenser Unit Receptacle	50819901	1
23	Drain Pan, Condensate (not shown)	04447401	1
24	Liquid Line Dryer	50730801	1
25	Fan Motor, Condenser (not shown & only for two section refrigerator)	50193101	1

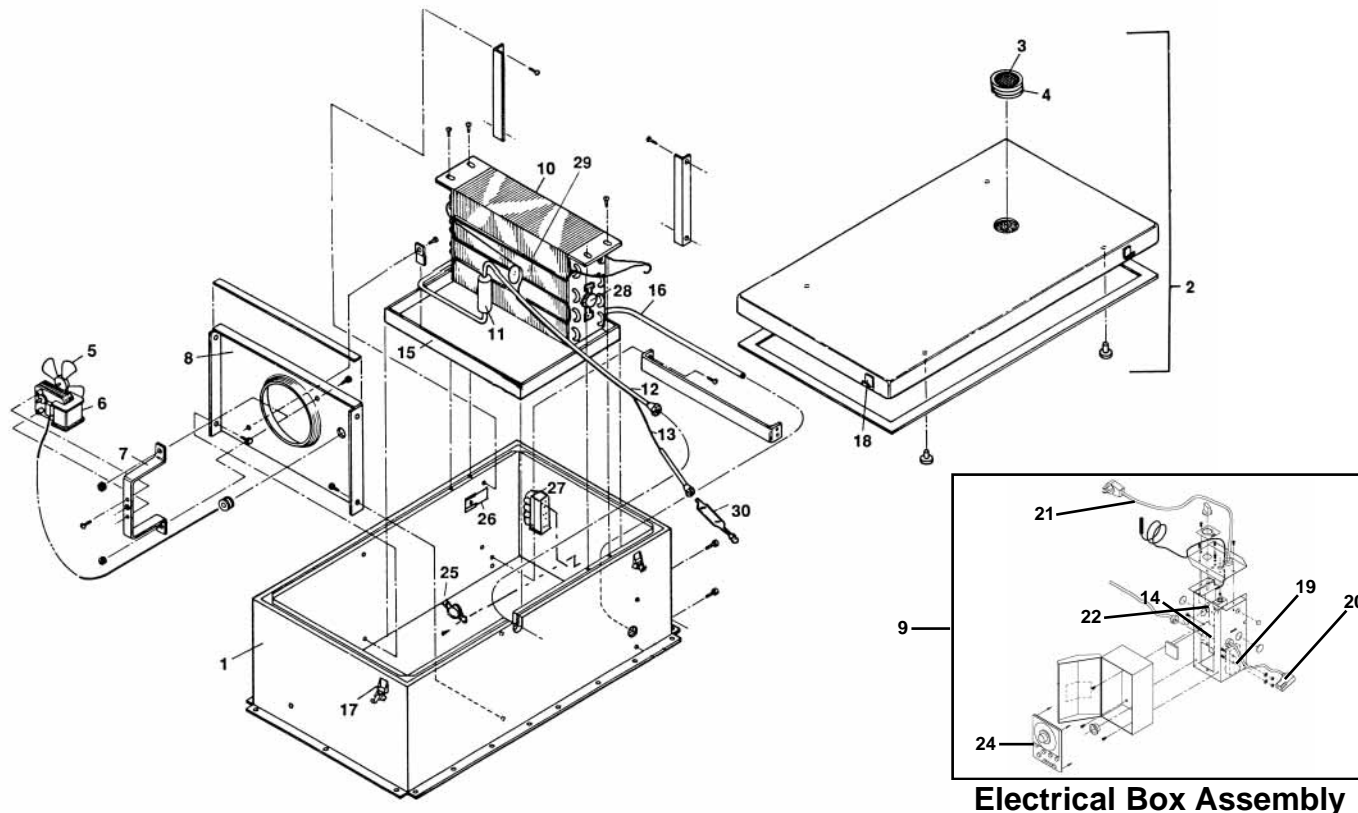
*Note: All field replacement parts may not be stated on this parts list. For additional information or assistance, contact the factory.

[“End Of Section, Click Here For Parts Lists Table of Contents”](#)

SECTION 6-PARTS LIST

**Figure 6-5
One Section Freezer Components**

SECTION 6-PARTS LIST



Item	Description	Part Number	Quantity
1	Evaporator Housing Assembly	10534201	1
2	Evaporator Housing Assembly Cover	10534102	1
3	Screen, Vent	50177401	1
4	Vent, Breather	50097901	1
5	Fan Blade, Evaporator	50598001	1
6	Fan Motor, Evaporator	50639801	1
7	Bracket, Evaporator Fan Motor	04415201	1
8	Fan Panel	04404803	1
9	Electrical Box Assembly	10806301	1
10	Coil, Evaporator	50617201	1
11	Accumulator	50180701	1
12	Heat Exchanger	10723101	1
13	Capillary Tube	50793601	2
14	Temperature Control	50616101	1
15	Drain Pan, Evaporator	10511103	1
16	Drain Line	50245001	1
17	Latch, Lock	50554302	4
18	Latch, Strike Hook	50554303	4
19	Terminal Board, 1 to 4	50684401	1
20	Cordset, Heater and Light	50836801	1
21	Harness, Cord and Plug 115v/15A	50828201	1
22	Harness, Condenser Unit Receptacle	50837101	1
23	Drain Pan, Condensate (not shown)	N/A	1
24	Defrost Timer	50197302	1
25	Heater Safety (2 wire)	50599401	1
26	Probe Bracket	50244101	1
27	Junction Block	50606001	1
28	Fan Delay (3 wire)	50599501	1
29	Defrost Heater	50620501	1
30	Liquid Line Dryer	50730801	1
31	Power Relay	50369401	1

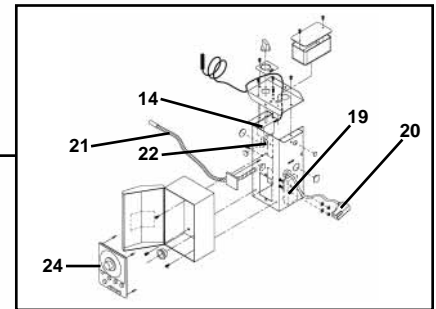
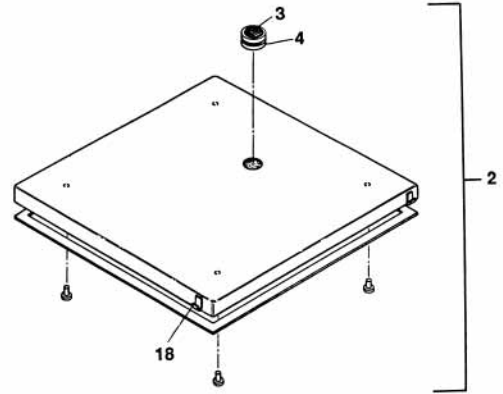
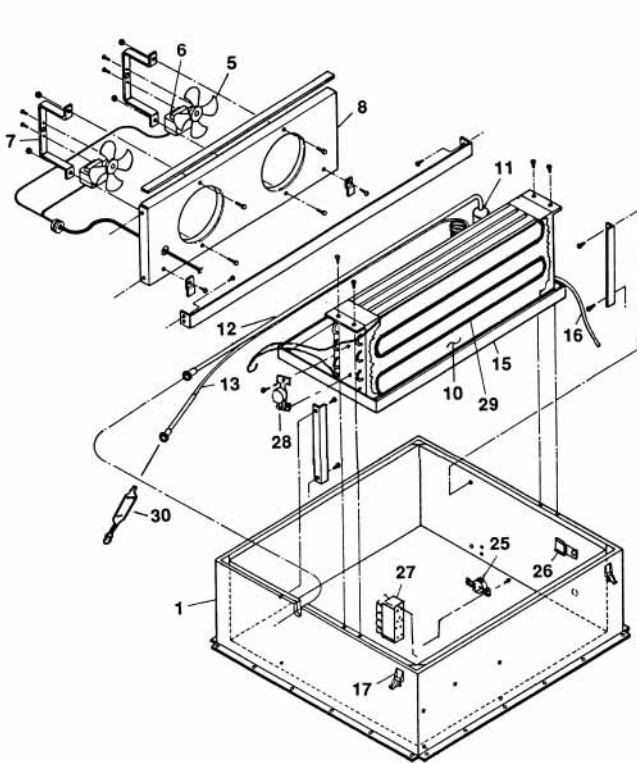
*Note: All field replacement parts may not be stated on this parts list. For additional information or assistance, contact the factory.

[“End Of Section, Click Here For Parts Lists Table of Contents”](#)

SECTION 6-PARTS LIST

**Figure 6-6
Two & Three Section Freezer Components**

SECTION 6-PARTS LIST



Electrical Box Assembly

Item	Description	Part Number	Quantity
1	Evaporator Housing Assembly	10536801	1
2	Evaporator Housing Assembly Cover	10536902	1
3	Screen, Vent	50177401	1
4	Vent, Breather	50097901	1
5	Fan Blade, Evaporator	50598001	2
6	Fan Motor, Evaporator	50639801	2
7	Bracket, Evaporator Fan Motor	04415201	2
8	Fan Panel	04403702	1
9	Electrical Box Assembly (refer to "Electrical Assembly with Figure 6-5)	10806301	1
9	Electrical Box Assembly, Three Section	10806401	1
10	Coil, Evaporator	50616901	1
11	Accumulator	50181401	1
12	Heat Exchanger, Two Section	10738401	1
12	Heat Exchanger, Three Section	10768601	1
13	Capillary Tube	50198902	2
13	Capillary Tube	50793501	2
14	Temperature Control	50616101	1
15	Drain Pan, Evaporator	10511104	1
16	Drain Line	50245001	1
17	Latch, Lock	50554302	4
18	Latch, Strike Hook	50554303	4
19	Terminal Board, 1 to 4	50684401	1
20	Cordset, Heater and Light	50836801	1
21	Harness, Cord and Plug 115v/15A	50828201	1
22	Harness, Condenser Unit Receptacle	50837101	1
23	Drain Pan, Condensate (not shown)	N/A	1
24	Defrost Timer	50197302	1
25	Heater Safety (2 wire)	50599401	1
26	Probe Bracket	50244101	1
27	Junction Block	50606001	1
28	Fan Delay (3 wire)	50599501	1
29	Defrost Heater	50596301	1
30	Liquid Line Dryer	50730801	1
31	Power Relay	50369401	1

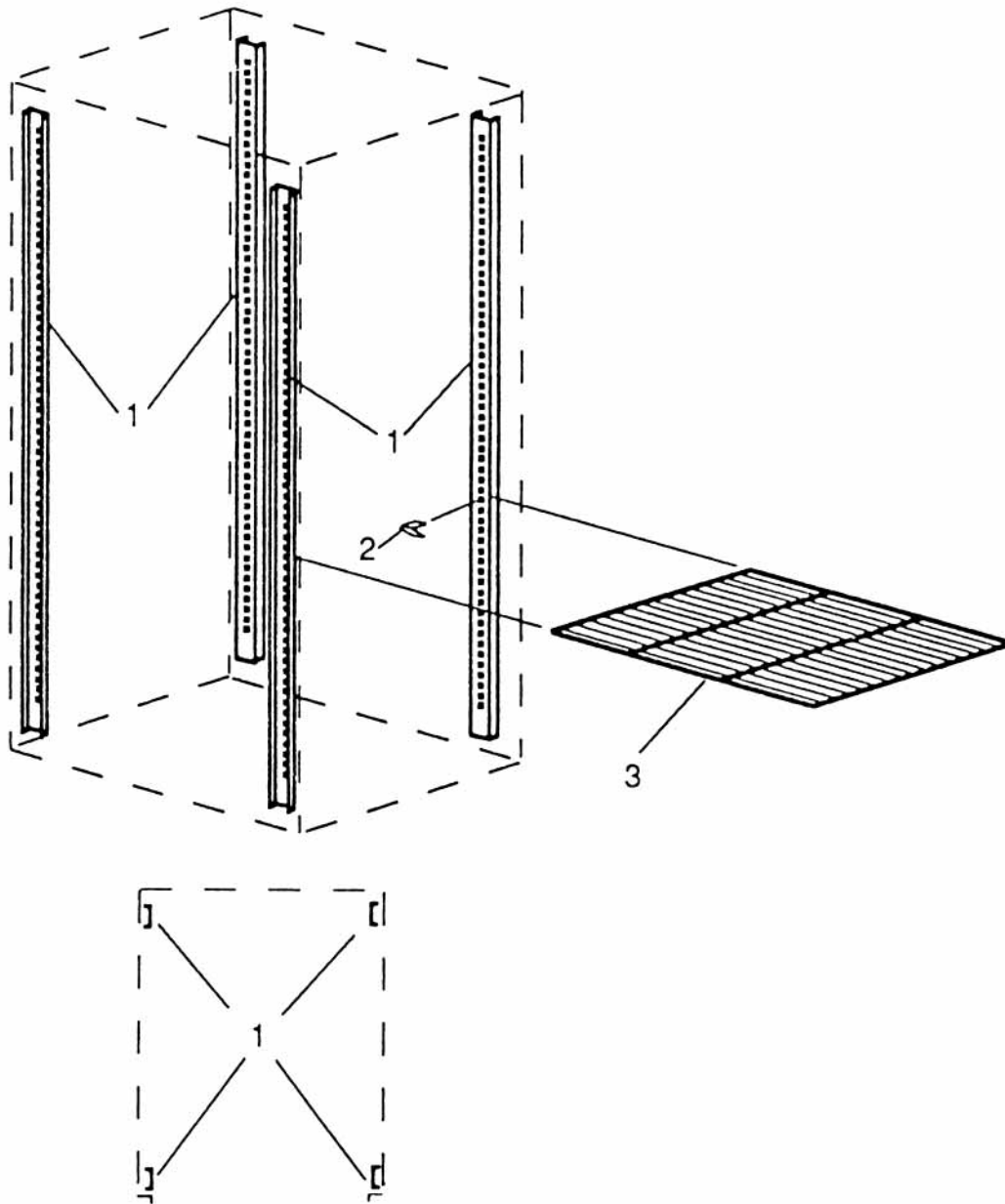
*Note: All field replacement parts may not be stated on this parts list. For additional information or assistance, contact the factory.

["End Of Section, Click Here For Parts Lists Table of Contents"](#)

SECTION 6-PARTS LIST

**Figure 6-7
Shelves & Pilasters**

SECTION 6-PARTS LIST



Item No.	Number of Sections						Part No.	Description
	One Section	Two Section Section 1	Section 2	Three Section Section 1	Section 2	Section 3		
1	X	X	X	X	X	X	03221003	Aluminum Pilaster 9/32" Deep x 54-1/2" Long
1	X	X	X	X	X	X	03221004	Stainless Steel 9/32" Deep x 54-1/2" Long
2	X	X	X	X	X	X	50022501	Shelf Support Clip
2	X	X	X	X	X	X	50022601	Stainless Steel Shelf Support Clip
3	50597703	50597803	50597803	50597803	50597903	50597803		Stainless Steel Shelves
3	50597706	50597806	50597806	50597806	50597906	50597806		Epoxy Coated Shelves
							50828401	Nylon Inserts
							50828901	Tapping Screws

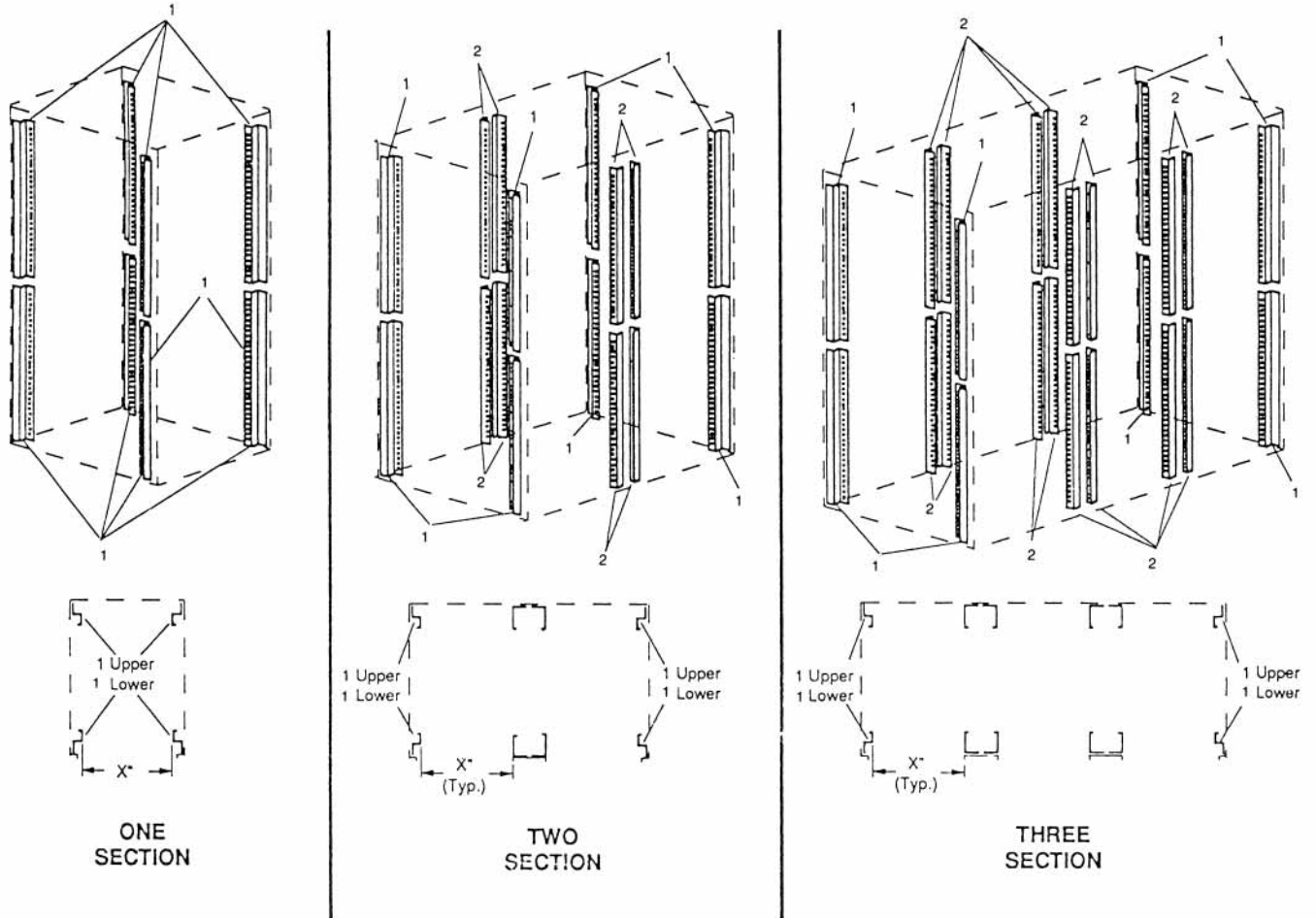
*Note: Two pieces needed to install uprights, Nylon Inserts and Tapping Screws. Part Numbers are given above. All field replacement parts may not be stated on this parts list. For additional information or assistance, contact the factory.

["End Of Section, Click Here For Parts Lists Table of Contents"](#)

SECTION 6-PARTS LIST

SECTION 6-PARTS LIST

Figure 6-8
Uprights for Stainless Steel Adjustable Type Pan Slides Parts List
 (For Pan Slide Part Numbers, Refer to Figure 6-9)

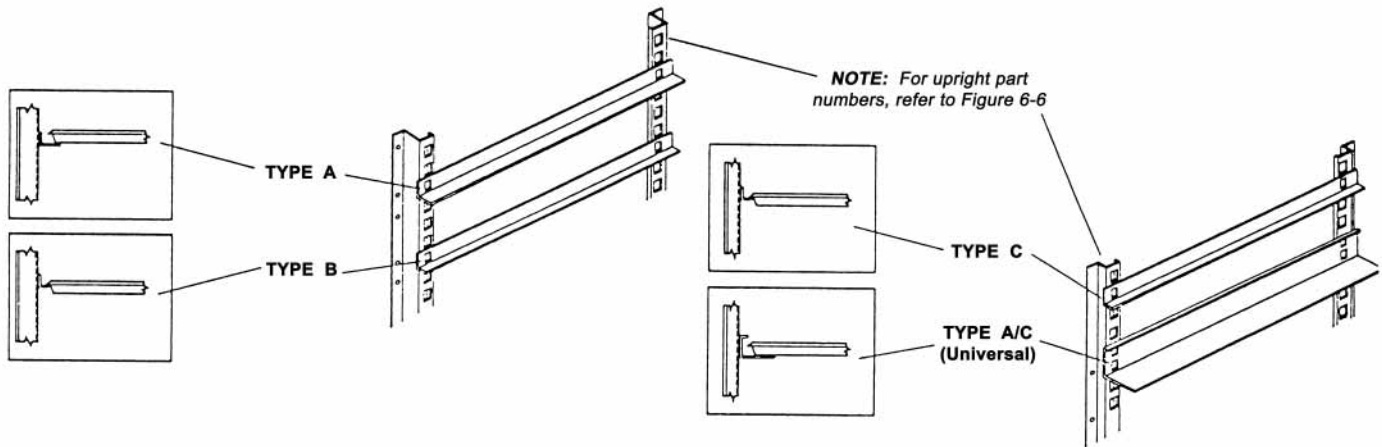


Item No.	Number of Sections			Pan Slide Type				Upright Part Number
	One	Two	Three	A	B	C	A/C	
1	X			X	X			09139301
1		X		X	X			09139301
2		X		X	X			09139501
1			X	X	X			09139301
2			X	X	X			09139501
1	X					X	X	09139401
1		X				X	X	09139401
2		X				X	X	09139601
1			X			X	X	09139401
2			X			X	X	09139601

***Note:** Two pieces to install uprights, Nylon Insert Part No. 50828401 and Tapping Screws Part No.50828901. All field replacement parts may not be stated on this parts list. For additional information or assistance, contact the factory.

“End Of Section, Click Here For Parts Lists Table of Contents”

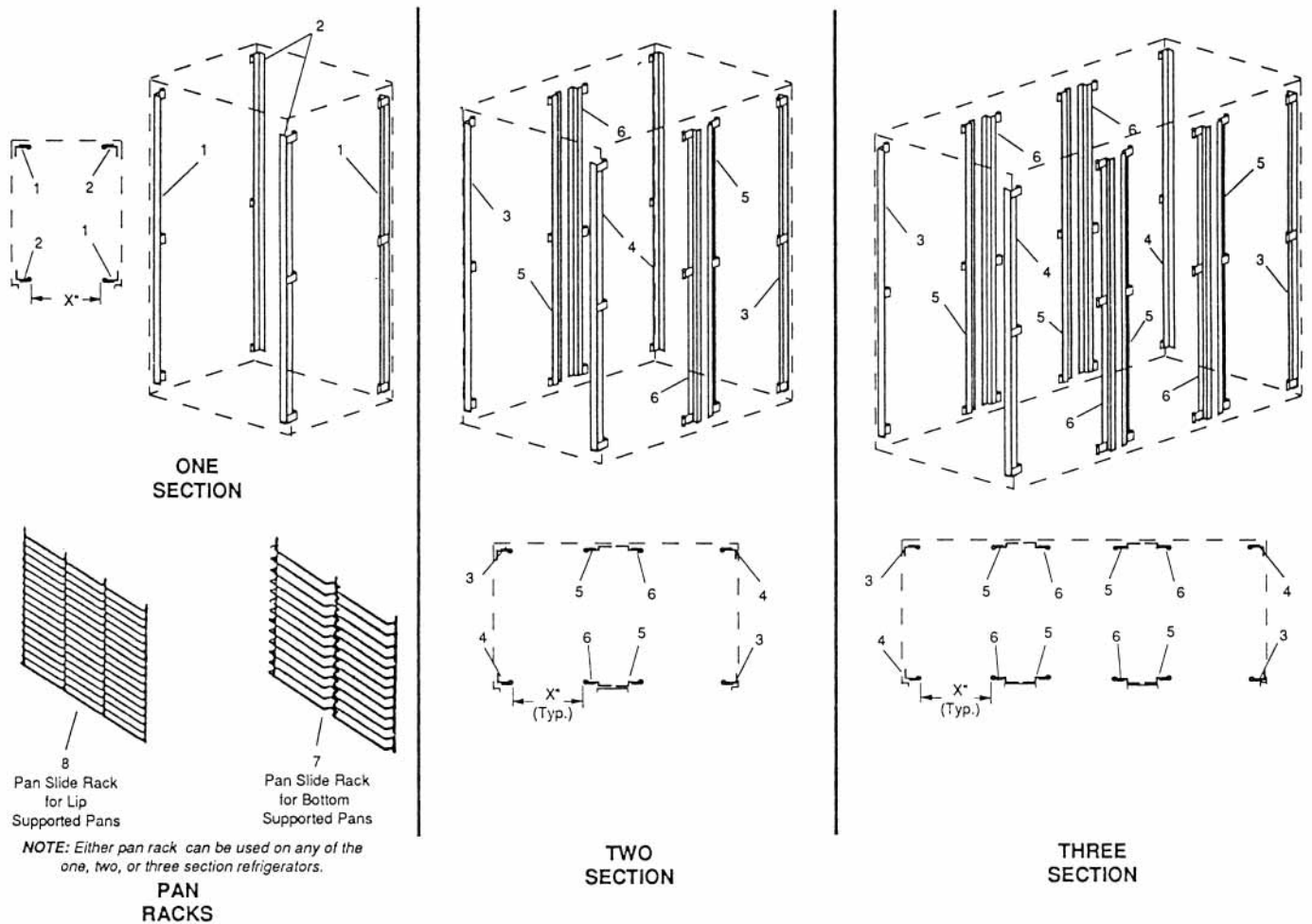
Stainless Steel Adjustable Type Pan Slide Part Numbers



Slide		Number of Pairs of Pan Slides									Pan Sizes		
Type	Part Number	Full Door			Upper Half Door			Lower Half Door			Number of Pans/Pair of Pan Slides		
		Spacing			Spacing			Spacing			18" w x 26" d	18" w x 14" d	20" w x 12" d
		2"	3"	4"	2"	3"	4"	2"	3"	4"			
A	09335301	26	18	13	12	8	6	12	8	6	1	2	n/a
B	09335201	26	17	13	12	7	6	12	8	6	1	2	n/a
C	09335201	n/a	17	13	n/a	7	6	n/a	8	6	n/a	n/a	2
A/C	09335402	n/a	18	13	n/a	8	6	n/a	8	6	1	2	2

*Note: All field replacement parts may not be stated on this parts list. For additional information or assistance, contact the factory.

Steel Rod Pan Slide Racks and Upright Parts



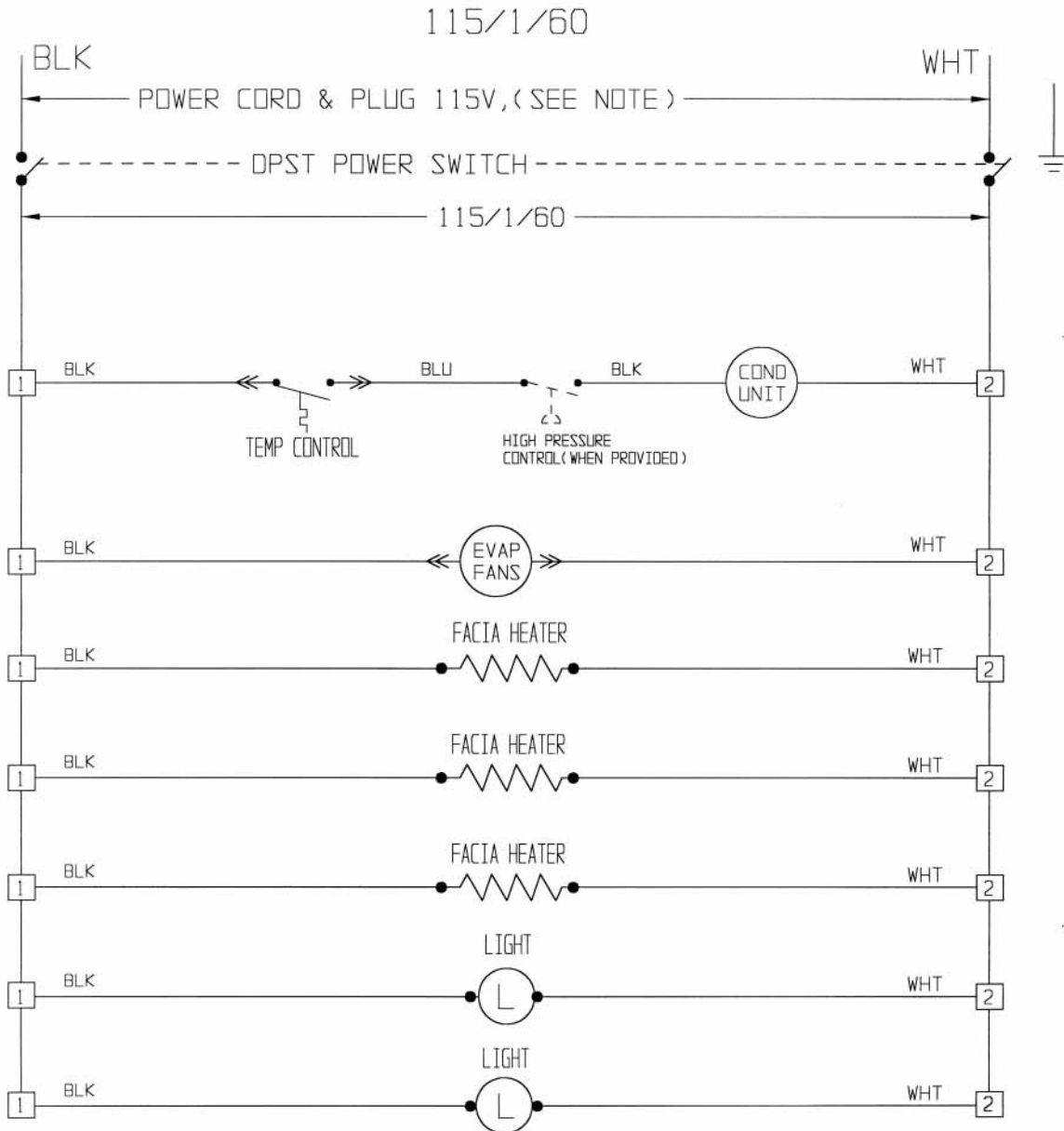
Item No.	Number of Sections			Upright Part Number
	One	Two	Three	
1	X			99131201
2	X			99131201
3		X	X	99131202
4		X	X	99131202
5		X	X	99131301
6		X	X	99131301
Item No.	Pan Rack Part Number		Pan Rack Description	
7	50274001 (Upper & Lower)		Pan rack assembly for bottom supported pans, 2 pairs of pan rack assemblies / section, 26 pans / section on 2" centers.	
8	50274301 (Upper & Lower)		Pan rack assembly for lip supported pans, 2 pairs of pan rack assemblies / section, 34 pans / section on 1-1/2" centers.	

*Note: All field replacement parts may not be stated on this parts list. For additional information or assistance, contact the factory.

["End Of Section, Click Here For Parts Lists Table of Contents"](#)

SECTION 7 WIRING DIAGRAMS

1, 2 & 3 SECTION REFRIGERATOR



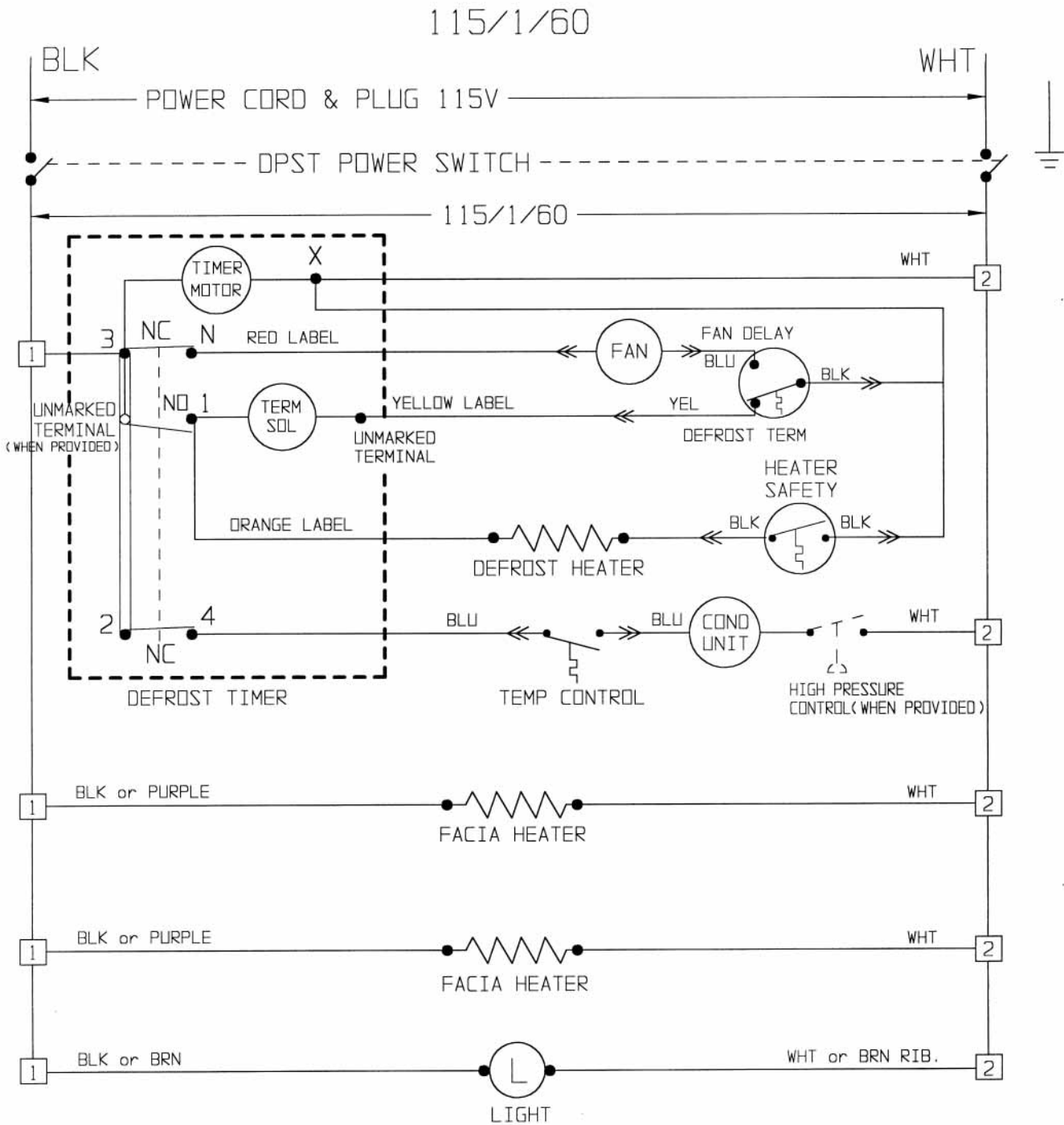
POWER CORD & PLUG NOTE:

MODEL:

VR-1	15 AMP	NEMA 5-15P
VR-2	15 AMP	NEMA 5-15P
VR-3	15 AMP	NEMA 5-15P

1 REPRESENTS CONNECTION AT TERMINAL BLOCK

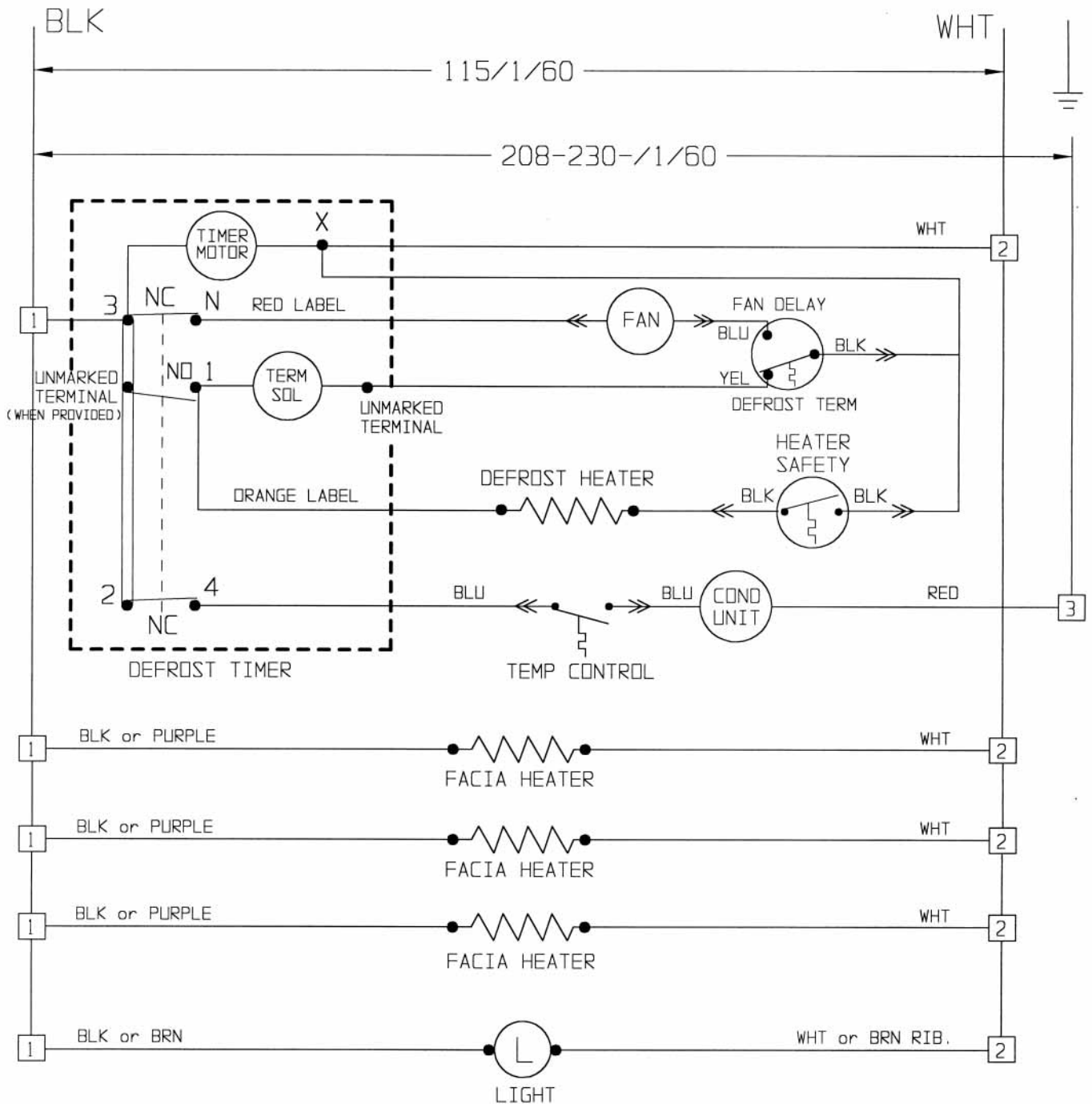
1 & 2 SECTION FREEZER



POWER CORD & PLUG NOTE:
 FOR VF-1 & VF-2, REFER TO
 VR-1 & VR-2 INFORMATION ON
 PAGE 37

1 REPRESENTS CONNECTION
 AT TERMINAL BLOCK

3 SECTION FREEZER



POWER CORD AND PLUG NOTE:

MODEL:

VF-3 HARDWIRE

1 REPRESENTS CONNECTION AT TERMINAL BLOCK



VICTORY REFRIGERATION
110 Woodcrest Road
Cherry Hill, NJ 08003

Phone (856) 428-4200 Fax (856) 428-7299

Website: www.victory-refrig.com

E-Mail: parts@victory-refrig.com
order-entry@victory-refrig.com

or

service@victory-refrig.com

Manual Part Number: 50853201

Rev: 04

Print Date: 06/18/02

Price: \$15.00



AGA FOODSERVICE EQUIPMENT

Website: www.agafoodservice.com