

universalfuzedirect-link

Bluetooth Handsfree installation

Ford Falcon BA/BF- READ THIS CAREFULLY IN IT'S ENTIRETY BEFORE BEGINNING!

Installation Summary...

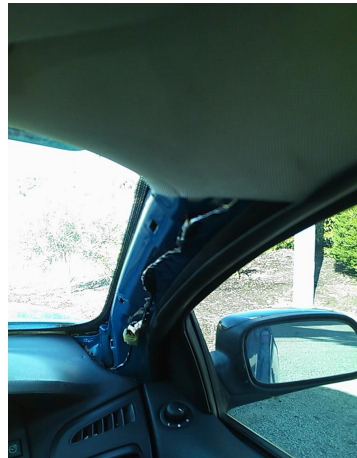
- identifying product locations
- finding correct connection points
- ideal connection methods
- pairing procedure for functionality
- troubleshooting

identifying product locations..

main processing module (blue box in [Parrot BTE600](#) kit)

this unit will need to be mounted securely for safety and longevity. The ideal location in your vehicle is a free space next to and above the pedals on the passenger side of the steering column. You will find here a large black steel strut that supports the dash, if you have a right angled drill adapter you can screw the module to this strut or a pair of 300mm cable ties are just as effective.

Strut



microphone

the best location for your Mic for greatest performance is in the center of the vehicle, just above your rear vision mirror at the top of your windscreen. You'll find that the included mic mount will adhere to the windscreen providing you with a swivel mount for the microphone. You can then tuck the lead in under the roof lining gently using a [right angle panel puller](#) or similar tool. Gently remove the A pillar panel with your fingers (so as not to mark it by prying with a tool) and cable tie or tape the mic cable along the factory cabling securely down to the dash (see above). At this point, remove part of the rubber doorway surround between the floor level about 400mm upwards along the doorway. Tuck the mic cable into this cavity and through to and above the fuse panel.

Replace the rubber into it's groove and refit the A pillar panel carefully. Take care not to crush or damage the mic cable with the A pillar clips.

Run the mic cable across the factory cabling that passes beneath the steering column to be

secured later when all power cables are run. Bundle the excess carefully and not too tightly and secure with a cable tie to the black dash strut you mounted the module to earlier. Be sure to leave enough length to comfortably plug the mic cable in to the module, and do so.

controller unit

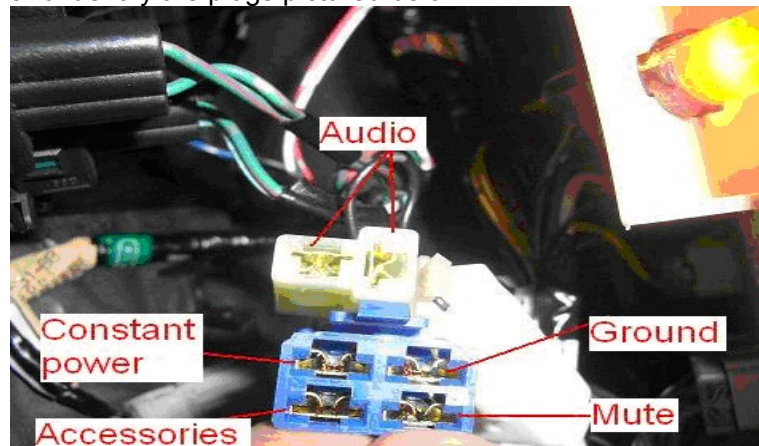
controller unit mounting location can vary due to personal preference, though I find one of the neater and more convenient locations is next to the shifter on the Silver (usually) dress surround of the automatic or manual shifter. This surround will pop neatly up using panel paddles or bare fingers, using a feeding tool (plastic tongue from tongue and groove chipboard is the best, a straightened coat hanger can also be used but can mark things easily and is not recommended), push the feeding tool through the exposed cavity around the shifter and down towards the drivers side foot well. Your target is to bring the tool through from this cavity out to the gap between the carpet and the plastic center console above the foot well towards the module you have mounted. Carefully probe with the feed tool till you have found this route.

When you have the feed tool through, attach the plug end of the controller to it securely with electrical tape and carefully draw the cable through. Take care here not to catch the plug or cable on anything, and not to pull forcefully on the cable itself as It is easy to damage with excessive tension.

When you have the cable through, leave yourself enough length to attach the controller to the shifter surround and clip it back into place bringing the cable out to the drivers side of the panel. Mount the controller with supplied double sided tape. Bundle the excess cable as you did with the microphone and have the controller lead ready to plug into the main module when the power harness has been attached.

power harness

as this kit is universal, it has interceptor relays for up to 4 speakers. Since your falcon is a little cleverer than some cars we are going to make use of the factory auto mute feature and audio input to save a little time and excessive connections. Look up and behind the factory fuse panel and identify the plugs pictured below..



If you purchased your kit from Universalfuze.com, it will have come pre terminated for this application. If not, you will have to terminate the wires of your kit accordingly using male spade crimp terminals.

The RED wire of your Parrot kit parrot harness will plug into the pin marked Accessories

The ORANGE wire of you parrot kit will plug into the pin marked Constant Power

The BLACK wire will connect to the pin marked Ground

The BLUE wire of your Parrot kit will plug into the pin marked Mute

The GREY and GREY/BLACK wires from you Parrot kit will each plug into one of the pins in the plug marked Audio (grey to left side, grey/black to right)

you have now made all appropriate connections, so you can carefully run this harness back towards the main control module with the cables that pass below the steering column, securing to the factory wiring loom and microphone cable as you go with cable ties. Be sure to check that no cableing comes into contact with the moving parts of the steering column. Bundle excess cable and relay block and secure to the dash support with the other cables and plug the main power harness and I/O harness into the main blue module. Plug the controller lead into the appropriate socket on the I/O harness.

You are now ready for a power up test!

Turns your vehicle accessories on with the key. Your Bluetooth kit should power up and the lights on the controller illuminate. Select the appropriate language as per the Parrot instruction manual, you should hear the menu voice clearly through the vehicle speaker system and the audio display will read 'TEL'.

Pairing procedure

in any phone that is bluetooth enabled, you will find a 'Bluetooth' section of the menu, usually under 'Connectivity' (consult you phone user manual for details)

Once you have found this menu, with the vehicles accessories switched on, search for bluetooth devices from you phone.

Your phone will list Parrot bluetooth or BTE600, select this device to connect.

The phone will then ask you to input a PIN, this is factory preset to 1234 by Parrot and will remain so unless you change it in the Parrot settings menu.

After the device has indicated 'pairing successful', you will need to select 'options' and set the Parrot kit to make connections automatically with your phone (consult phone user manual for details)

Congratulations! You have now completed your first professional Bluetooth kit installation!

troubleshooting

no power up or no audio

make sure the vehicles key is in the ACC position. Check and recheck all connections as pictured, make sure there is no tension on any plugs or connections and that no cables have been crushed during panel re-installation.

cannot 'find' Parrot kit with the phones bluetooth menu

make sure the vehicles key is in the ACC position. Check and recheck all connections as pictured and confirm kit has complete power up with audio by setting the language menu

phone pairs and connects but has audio conflicts or limited connectivity

seek a software update from your telephone manufacturer, this is a common requirement and can usually be done online at home easily. See you phones user manual for details

Any further questions or troubleshooting can be directed to
support@universalfuze.com