



Project: \_\_\_\_\_  
 Location: \_\_\_\_\_  
 Item #: \_\_\_\_\_  
 Quantity: \_\_\_\_\_

## Dual Temp Refrigerator/Freezers

### RFS MODELS —

Stainless steel exterior and interior.

**RFS-1D-S7**  
**RFS-2D-S7**

### RFSA MODELS —

Stainless steel exterior.  
 Aluminum interior.

**RFSA-1D-S7**  
**RFSA-2D-S7**

### RFA MODELS —

Stainless steel fronts and doors. Aluminum sides and interior.

**RFA-1D-S7**  
**RFA-2D-S7**

Half Door, Pass-Thru and Remote Models Available



**RFS-2D-S7**

### Cabinet:

Victory's dual temperature model provides storage of both refrigerated and frozen foods within a single cabinet. An insulated partition between the cabinet sections ensures temperature integrity of each product zone. The cabinet front and doors are constructed of heavy gauge polished stainless steel to maintain an attractive appearance after years of heavy use. Foamed-in-place polyurethane insulation throughout the cabinet and doors ensures the ultimate in energy efficiency.

### Doors:

The self-closing doors are securely mounted on rugged cam-lift hinges, which have a lifetime guarantee. Each door has a heavy-duty cylinder lock and self-adjusting magnetic gasket to prevent the cold air from escaping. Humidity control wires located around the door jamb prevent condensation from forming on the cabinet front and are concealed by a high impact, non-conductive thermal breaker strip. The interior door liner is constructed of durable ABS material,

which resists denting and scratching and is easy to clean. Each safety grip handle is guaranteed for life. Interior lighting is controlled automatically by a switch mounted in the hinge.

### Shelving:

The heavy-duty wire shelves are adjustable in one-inch increments. A wide door opening allows the use of a variety of optional pan slide types for 12" x 20", 18" x 26", and 14" x 18" pans and trays.

### Refrigeration System:

The two-section model is equipped with two self-contained independent refrigeration systems mounted on top of the cabinet. The air circulating fans and the forced convection-cooling coil are contained in an insulated housing separate from the product zone allowing for maximum food storage capacity. All condensate water is disposed of automatically by the energy efficient condensate vaporizer (installation required on site), no plumbing is required.

### RFS and RFSA Models

- Digital Thermometer/Battery Back-up
- Adjustable Stainless Steel Legs

### RFA Models

- Dial Thermometer
- Adjustable Legs

### Standard Features (all models)

- Energy Saver Switches
- Stainless Steel Case Front and Doors
- Lifetime Heavy-Duty Cam Lift Hinges
- Adjustable Wire Shelves
- Lifetime Safety Grip Handles
- Self-Closing Doors with Safety Stops
- Flush-Mounted Automatic Interior Lighting
- Insulated Partition Wall Separates Compartments
- Energy Saving Thermal Breaker Strips
- Door Opening Accepts 12" x 20" and 18" x 26" Pans
- Heavy-Duty Cylinder Locks
- One Piece Self-Adjusting Magnetic Door Gaskets
- High Impact ABS Interior Door Liner
- Plasticized Fin Coil
- Environmentally Friendly R-134a Refrigerant
- Environmentally Friendly R-404A Refrigerant
- Condensate Automatically Evaporated
- Automatic Defrost
- Cord and Plug Attached on 115 V Two Section Models 12 Amps or Less

### Optional Features and Accessories

- Dial or Digital Thermometer
- Two Half Doors In Place of One Full Length Door on Two Section Model
- Full and Half Size Hinged Glass Doors with Cylinder Locks
- Change Door Swing
- Adjustable Stainless Steel Wire Shelves
- Stainless Steel Angle Pan Slides
- Zinc Plated Wire Pan Slides
- 5" Diameter Heavy Duty Swivel Casters with Brakes
- Stainless Steel Case Back
- Remote and Pass-Thru Models

NOTE: Single section model cooling coil is contained within a ceiling mounted low profile housing



Victory Refrigeration specification sheets are available online at [www.victory-refrig.com](http://www.victory-refrig.com).

CHARACTERISTICS	ONE SECTION		TWO SECTION	
	Reach-In	Reach-In	Pass-Thru	Pass-Thru
Width, Overall	26 1/2	52 1/8	52 1/8	52 1/8
Depth, Overall (incl. handles)	36 1/8	36 1/8	39 3/8	39 3/8
Height, Overall (incl. adj. legs)	84	84	84	84
Depth, Door(s) Open 90°	58 1/2	58 1/2	58 1/2	58 1/2
Clear Door Width	21 1/8	21 1/8	21 1/8	21 1/8
Clear Full Door Height	—	55 1/4	55 1/4	55 1/4
Clear Half Door Height	25 3/8	25 3/8	25 3/8	25 3/8
Capacity Net (cubic feet) Refrigerator	8.1	21.3	21.3	21.3
Capacity Net (cubic feet) Freezer	8.1	21.3	21.3	21.3
No. of Full Doors	—	2	4	4
No. of Half Doors	2	4	8	8
No. of Shelves	2	6	6	6
Shelf Area (square feet)	11.6	30.5	30.5	30.5
Cabinet Voltage	115/60/1	115/60/1	115/60/1	115/60/1
Feed Wires, Refrigerator	2	2	2	2
Feed Wires, Freezer	—	2	2	2
Condensing Unit Voltage, Refrigerator	115/60/1	115/60/1	115/60/1	115/60/1
Condensing Unit Voltage, Freezer	115/60/1	115/60/1	115/60/1	115/60/1
Condensing Unit Size (HP), Refrigerator	1/4	1/4	1/4	1/4
Condensing Unit Size (HP), Freezer	1/3	1/3	1/2	1/2
Total Amperes, Refrigerator	16.6	6.6	6.8	6.8
Total Amperes, Freezer	—	8.6	11.7	11.7

Crated dim. & wts.	Ht.	Width	Depth	Cu.Ft.	Lbs
One Section	87	36 1/2	44 3/4	82.2	520
Two Section	87	63 3/8	44 3/4	143.3	800

Approx. Pass-Thru weights, add 15%

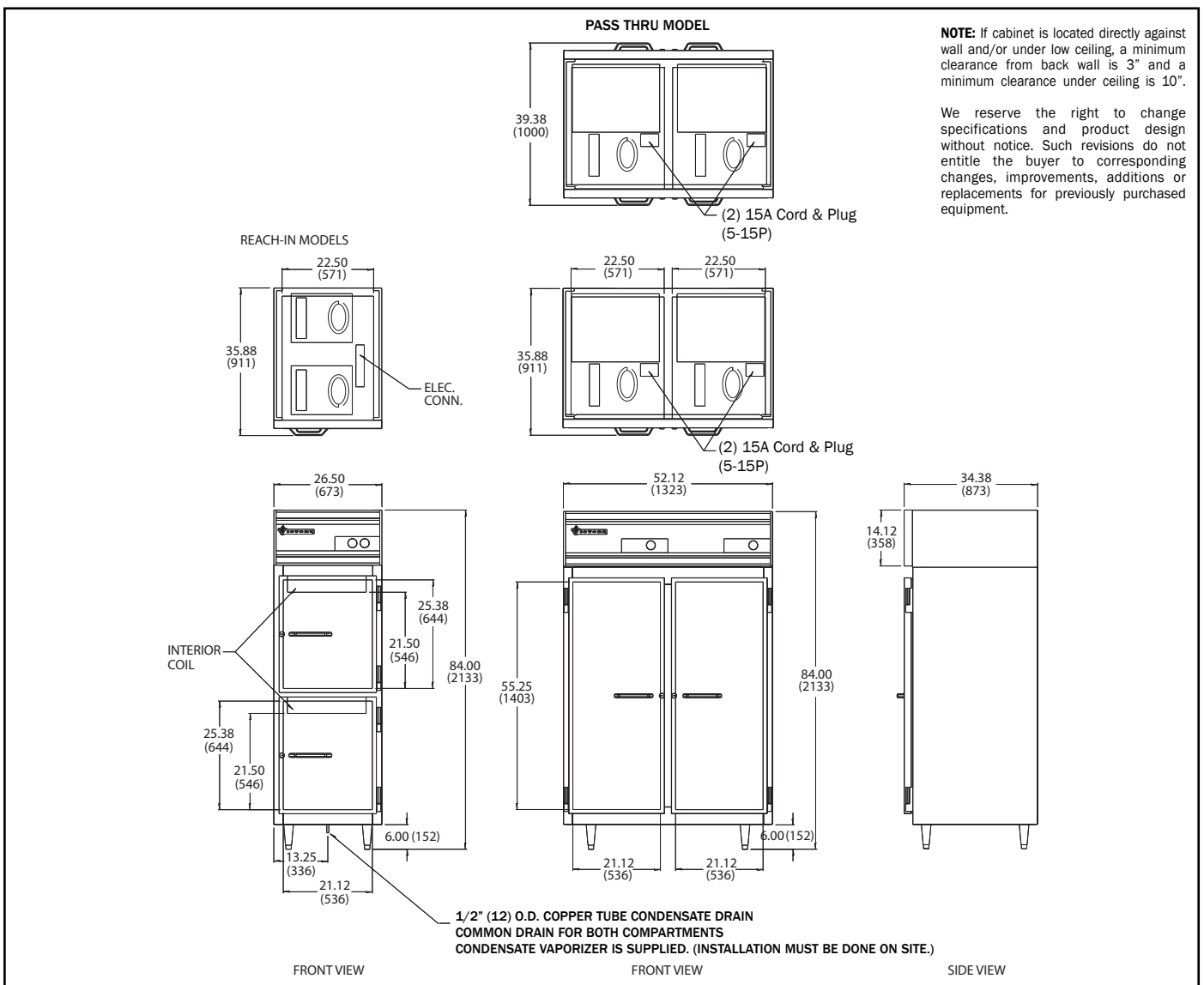
**FOR REMOTE MODELS**— Substitute an "R" for the "S" in suffix. For example: Model RFS-2D-S7 (self-contained) would be RFS-2D-R7 remote cabinet. Air circulating fans, expansion valve and plasticized coil are provided. Condensing units not supplied. The following units are recommended with 1/2" O.D. Suction line, 3/4" O.D. Liquid line.

**REMOTE REFRIGERATION**

	Cond. Unit	BTUH	Cabinet	Amps*
One Section				
Refrigerator	1/4 H.P.	1890	115/60/1	6.7
Freezer	1/3 H.P.	1510		
Two Section				
Refrigerator	1/4 H.P.	1890	115/60/1	2.3
Freezer	1/3 H.P.	1510	115/60/1	4.8

\*(In Defrost) For Remote Pass-Thru, Consult Factory

Dimensional tolerance ± 1/4" Metric dimensions (MM)



**NOTE:** If cabinet is located directly against wall and/or under low ceiling, a minimum clearance from back wall is 3" and a minimum clearance under ceiling is 10".

We reserve the right to change specifications and product design without notice. Such revisions do not entitle the buyer to corresponding changes, improvements, additions or replacements for previously purchased equipment.

Continuous product development may necessitate specification changes and design without notice.



Victory participates in the KCL CADalog, the most current source of CAD symbols for foodservice designers worldwide. Symbols include standard equipment in plan, side, front and 3-D views, layered for FEDA/FCSI recommended guidelines.