



JetBox 8180 User Manual

Windows XP Embedded

www.korenix.com

Copyright Notice

Copyright© 2010 Korenix Technology Co., Ltd

All rights reserved.

Reproduction without permission is prohibited.

Information provided in this manual is intended to be accurate and reliable. However, the original manufacturer assumes no responsibility for its use, or for any infringements upon the rights of third parties that may result from its use. The material in this document is for product information only and is subject to change without notice. While reasonable efforts have been made in the preparation of this document to assure its accuracy, Korenix assumes no liabilities resulting from errors or omissions in this document, or from the use of the information contained herein. Korenix reserves the right to make changes in the product design without notice to its users.

Acknowledgments

Korenix is a registered trademark of Korenix Technology Co., Ltd. All other trademarks or registered marks in the manual belong to their respective manufacturers.

Table of Content

Copyright Notice	2
Acknowledgments.....	2
Table of Content	3
Chapter 1 Overview	4
Chapter 2 Windows XP Embedded Software Specification.....	4
2-1 Protocol Stacks	4
2-2 System utilities	5
2-3 Supporting Service	5
2-4 Application Development Environment.....	6
2-5 Device Drivers	8
Chapter 3 Supporting Service	8
3-1 Telnet Server	8
3-2 FTP Server	9
3-3 Web Server.....	12
3-4 Dial up Network Service.....	17
3-5 Serial Port Operation Mode	22
Chapter 4 Software Configuration	22
4-1 XPe Firmware Version	23
4-2 Multiple Language & Multiple User Interface (MUI)	24
4-3 File-based Write Filter (FBWF).....	24
4-4 ODBC Data Source Administrator	27
4-5 Recovery CD	27
4-6 Visual Studio 2005	28
Chapter 5 Customer Service	29

Chapter 1 Overview

The JetBox 8180 is a ready-to-use Intel Atom 1.6GHz based computer with system memory 1GB DDRII RAM and system chipset 945GSE + ICH7M. Korenix, devoted to improve the usability of embedded computer in industrial domain, integrates device drivers, protocol stacks, system utilities, supporting services for Windows XP embedded in a CompactFlash card or in a 2.5" HD and installed in the JetBox 8180 to let users experience the computer in a simple way.

Combining all major interfaces, such as one Gigabit Ethernet port, four USB2.0 ports, one RS-232/422/485 port, one DVI (dual display option), and high definition audio into its compact design with DIN-rail type mounting, the JetBox 8180 communication computer provides flexible connectivities, as a result becoming a perfect front-end device for industrial applications.

Chapter 2 Windows XP Embedded Software

Specification

The JetBox XP embedded version provides abundant protocol stacks, common system utilities, and popular supporting services and application development environment to make the JetBox an easy and convenient programming platform. The software features of the JetBox XP embedded version are listed in following sections of this chapter and the JetBox file system is NTFS.

- ❑ **NTFS file system:** The NTFS File System driver (NT File System); Use NTFS instead of FAT for optimum file system security.

2-1 Protocol Stacks

The JetBox supports following protocol stacks: DHCP, IPv4, DNS, IPsec, HTTP, TCP, UDP, ICMP, IGMP, ARP, TAPI, TSP, SNMP, NTP, ICS, PPP, CHAP, EAP, Telnet, SNTP, FTP, SMTP,

PPPoE, PPTP, NetBIOS

- ❑ **DHCP Client Service:** registers and updates Internet Protocol (IP) addresses and Domain Name System (DNS) records for your target system.
- ❑ **IP Security Services:** this component provides IP Security (IPsec) services for all IP traffic.
- ❑ **Microsoft-Windows-HTTP Services:** implement the functionality of the HTTP protocol on a server.
- ❑ **TCP/IP Networking:** implements the core TCP/IP protocol stack, which includes the IPv4 version of the following protocols: Transmission Control Protocol (TCP), User Datagram Protocol (UDP), raw, Internet Control Message Protocol (ICMP), Internet Group Membership Protocol (IGMP), and Address Resolution Protocol (ARP). The component also includes WshTcpip.dll, which is the Winsock provider for TCP/IP to enable socket-level communication over TCP/IP.
- ❑ **TAPI:** A Telephony API (TAPI) Telephony Service Provider (TSP).
- ❑ **Simple Network Management Protocol (SNMP):** SNMP is an agent service that provides management systems with information about activities that occur in the Internet Protocol (IP) network layer. The SNMP agent monitors network traffic, and retrieves and updates local management information based on the requests from the SNMP manager. The agent also notifies registered managers with traps when significant events occur.
- ❑ **Time Service Core:** Synchronizes a workstation's clock with other computers using Network Time Protocol (NTP) version 3. This component increases accuracy by incorporating algorithmic enhancements from NTP 4.

2-2 System utilities

The JetBox supports following system utilities: Windows command shell, telnet, FTP, web-based administration manager, wireless zero configuration

2-3 Supporting Service

The JetBox supports following supporting services: T

- ❑ **Telnet Server:** allows users to connect to Telnet servers from remote computers.

- ❑ **FTP server:** used for transferring files to and from remote computer systems via a network
- ❑ **IIS Web Server:** allows you to create and manage Web sites.
- ❑ **Dial-up networking service:** RAS client API and PPP, support extensible authentication protocol (EAP) and RAS scripting
- ❑ **COM+ Services:** the next evolution of Microsoft Component Object Model (COM) and Microsoft Transaction Server (MTS).
- ❑ **Disk Management Services:** support for disk and volume management operations. The component implements a Component Object Model (COM) interface that can be used to query and configure disks and volumes (both basic and dynamic). The component also monitors disk arrivals and removals and other changes in the storage subsystem.
- ❑ **Remote Registry Service:** Enables remote users to modify registry settings on this computer.

2-4 Application Development Environment

- ❑ **Microsoft .Net Framework 2.0 with service pack 2**—includes the common language runtime (CLR) and the .NET Framework class library.
- ❑ **Active Directory Service Interface (ADSI) Core**—provides the basic functionality for ADSI by routing requests to the corresponding provider, based on the path that is provided.
- ❑ **Active Template Library (ATL)**—Supports ATL applications.
- ❑ **Certificate Request Client & Certificate Autoenrollment**—This component includes the common language runtime (CLR) and the .NET Framework class library.
- ❑ **COM Base**—The Component Object Model (COM) includes a programming model and a set of application programming interfaces (APIs), but does not include a dedicated user interface.
- ❑ **Common Control Libraries**—Provides common user interface (UI) controls.
- ❑ **Common File Dialogs**—Provides support for common dialog boxes.
- ❑ **Direct3D**—Infrastructure for using two-dimensional and three-dimensional graphics.
- ❑ **DirectPlay**—Provides a networking API that can enable any application to operate over both a peer-to-peer and client/server topology.
- ❑ **DirectShow**—Base filter graph and device enumeration support for all DirectShow applications. This component also provides most DirectShow filters.

- ❑ **Distributed Transaction Coordinator (MSDTC)**—A distributed transaction facility for Microsoft Windows systems, which uses transaction-processing technology. MSDTC uses loosely coupled systems to provide scalable performance.
- ❑ **File-Based Write Filter (FBWF)**—allows Windows XP Embedded (XPe) to maintain the appearance of read and write access to write sensitive or read only storage. FBWF makes read and write access transparent to applications.
- ❑ **Event Log**—A dynamic-link library (DLL) that runs as part of Services.exe. This component stores and retrieves events that can be viewed in the event viewer.
- ❑ **Internet Explorer**—The Internet Explorer Web browser allows customers to connect to the Internet or to an intranet (see properties via inetctl.cpl).
- ❑ **Mapi32 Libraries**—The infrastructure for e-mail support.
- ❑ **Message Queuing (MSMQ) Core**—Message Queuing is a messaging infrastructure and a development tool for creating distributed messaging applications for Microsoft Windows operating systems. It provides guaranteed message delivery, efficient routing, increased security, support for sending messages within transactions, and priority-based messaging.
- ❑ **Microsoft Visual C++ Run Time Libraries**—The Microsoft C++ Runtime Library.
- ❑ **Registry Editor:** The Registry Editor (regedit.exe, regedt32.exe).
- ❑ **RPC:** Facilitates local remote procedure calls (RPCs) using the ncalrpc and ncacn_np protocol sequences, and provides support for dynamic endpoint resolution. The RPC name service provides remote procedure call (RPC) named services functionality, such as the RPC Locator. The RPC Named Service component exposes all RpcNs* RPC functions. The RPC server provides a variety of RPC and Component Object Model (COM) services, including RPC Endpoint Mapper, COM Service Control Manager (SCM), and COM Object Resolver.
- ❑ **Smart Card Cryptographic Service Providers:** Supports features such as smart card logon and improved email security. Smart cards must be able to perform certain RSA public key cryptographic operations. The functions are exposed with CryptoAPI through a CSP. Each type of smart card requires a different CSP (provided by the card vendor).
- ❑ **Windows API:** Provides the user-mode component of the Windows operating system API.
- ❑ **Windows Media Player 10:** Playback functionality for digital media that includes music, videos, CDs, DVDs, and Internet Radio for end users and developers.
- ❑ **Windows Script Engines:** A complete scripting environment for Windows, including command-line scripting, script languages, and the ability to host script engines within your applications.

- ❑ **WMI:** Bundles the features that combine to create Windows Management Instrumentation (WMI).

2-5 Device Drivers

The JetBox provides following drivers in accompanied CD-ROM: Audio, LAN, SysChip, VGA, Watchdog timer

Chapter 3 Supporting Service

3-1 Telnet Server

The Telnet Server allows users to connect to Telnet servers from remote computers. When a Telnet client computer connect to the Telnet server, the remote user is prompted to enter a user name and password. By default, only user name and password combinations that are valid on the local server can be used to log on to that server.

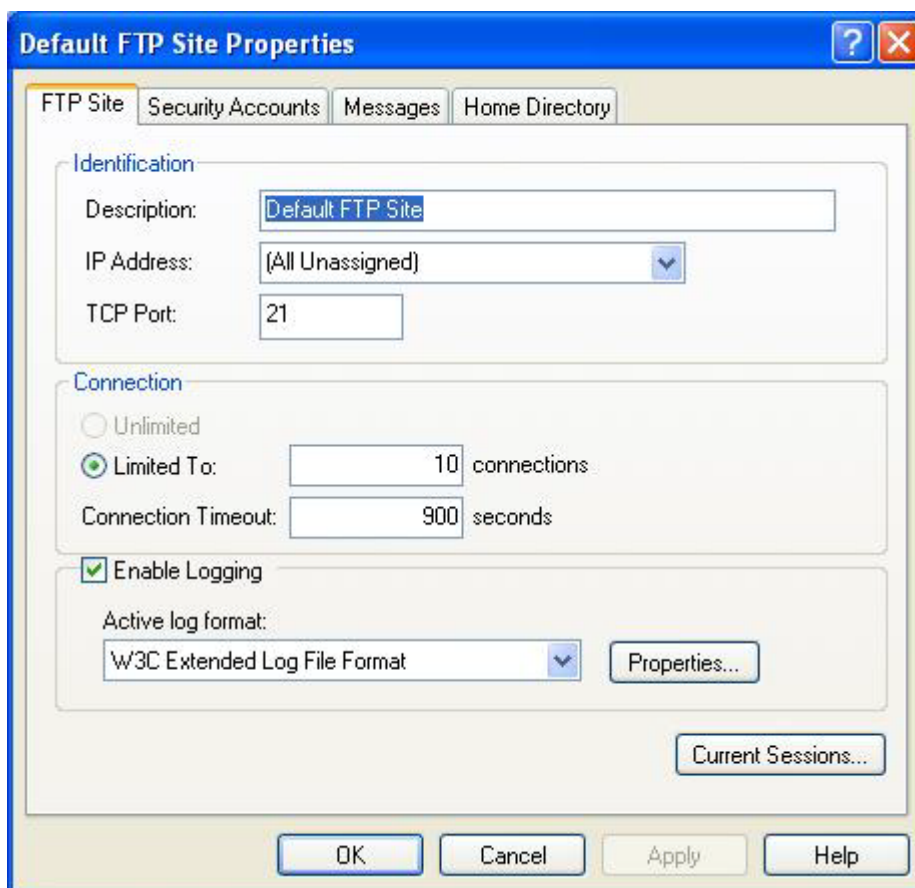
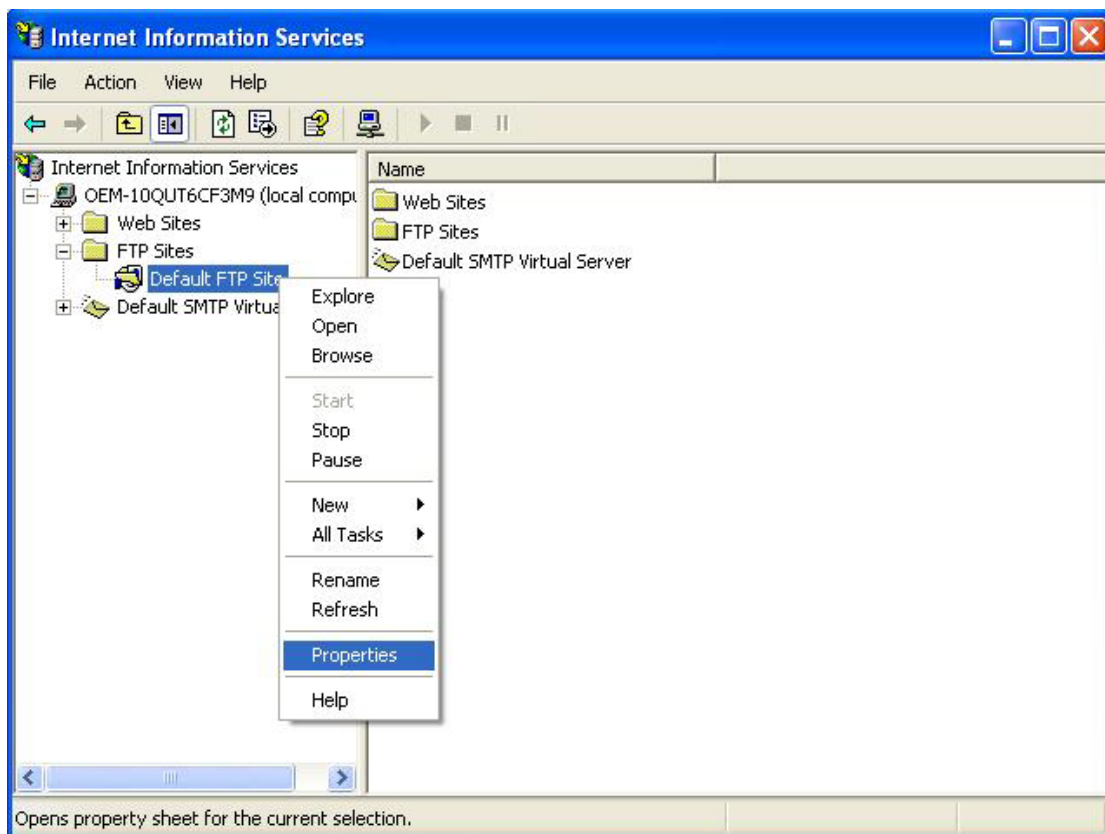
Setting	Default	Description
Enable NTLM authentication	Selected	Specifies whether to use NTLM authentication. By default, this component to set to use both NTLM and password authentication.
Enable password authentication	Selected	Specifies whether to use password authentication. By default, this component to set to use both password and NTLM authentication.
Operation mode	Console	Specifies the mode of operation. Choose one of the following from the drop-down box: Console, or Stream. Console mode is useful for running screen-oriented programs, such as vi (Visual Interface). Stream mode is

Setting	Default	Description
		useful for running command-line applications.
Maximum number of connections	2	Specifies the maximum number of simultaneous connections that can exist to the Telnet server. Set this value to a number ranging from 0 to 2147483647.
Telnet port	23	Specifies the port number for the Telnet server to use to make Telnet connections. Set this port to a number ranging from 1 to 1023. To reduce the number of requests to the Telnet server, set the port number to a lesser-known port on the computer.

3-2 FTP Server

The FTP Server copies files to and from remote computer system on a network using TCP/IP. This component also allows users to use File Transfer Protocol (FTP) commands to work with files, for example, listing files and directories on the remote system.

Users can set up FTP properties at following steps.



Default FTP Site Properties [?] [X]

FTP Site | **Security Accounts** | Messages | Home Directory

☒ Allow Anonymous Connections

Select the Windows User Account to use for anonymous access to this resource

Username:

Password:


☐ Allow only anonymous connections

☒ Allow IIS to control password

FTP Site Operators

Grant operator privileges to Windows User Accounts for this FTP site only.

Operators:

 Administrators

Default FTP Site Properties [?] [X]

FTP Site | Security Accounts | **Messages** | Home Directory

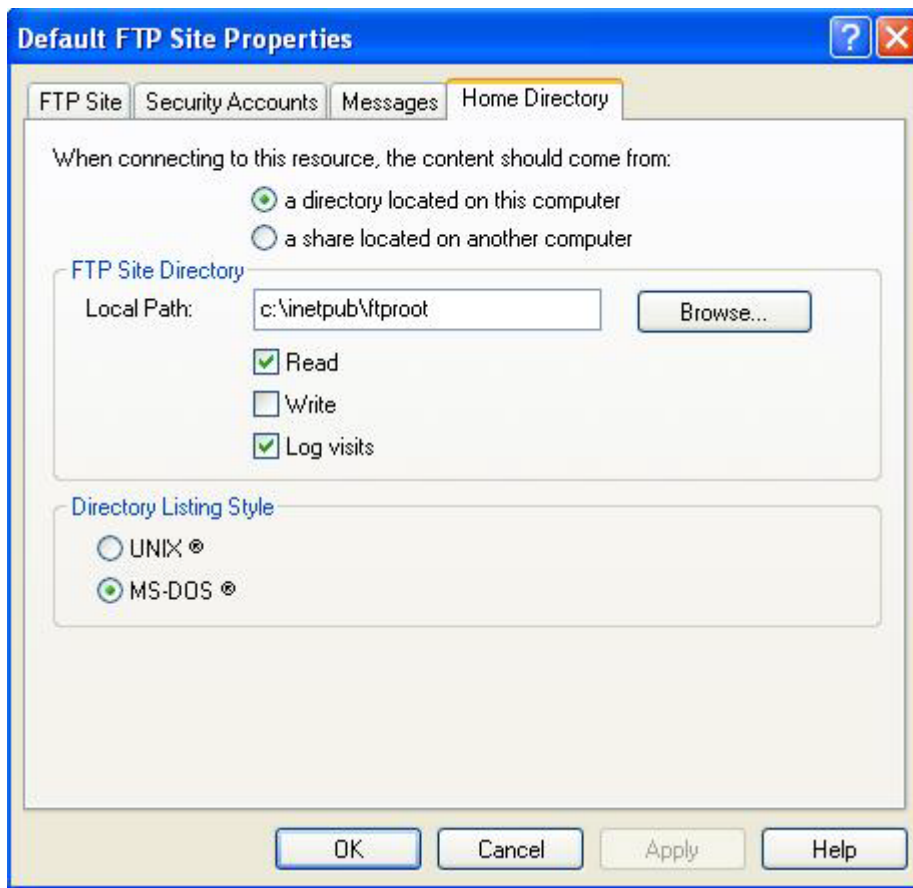
FTP Site Messages

Banner:

Welcome:

Exit:

Maximum connections:

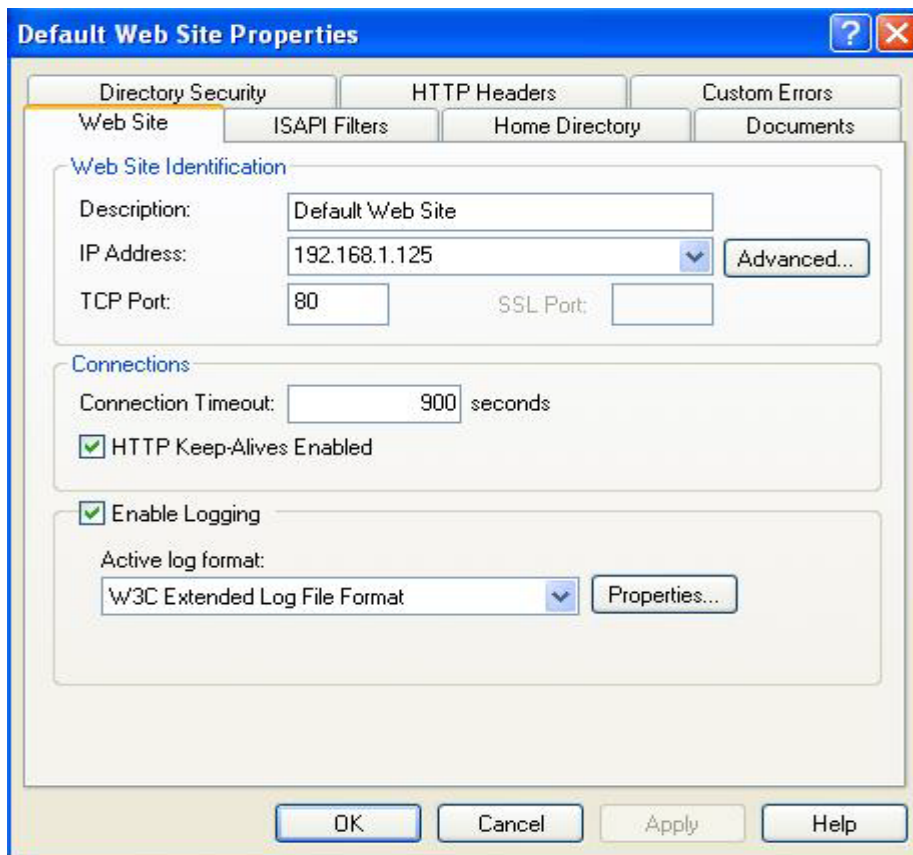
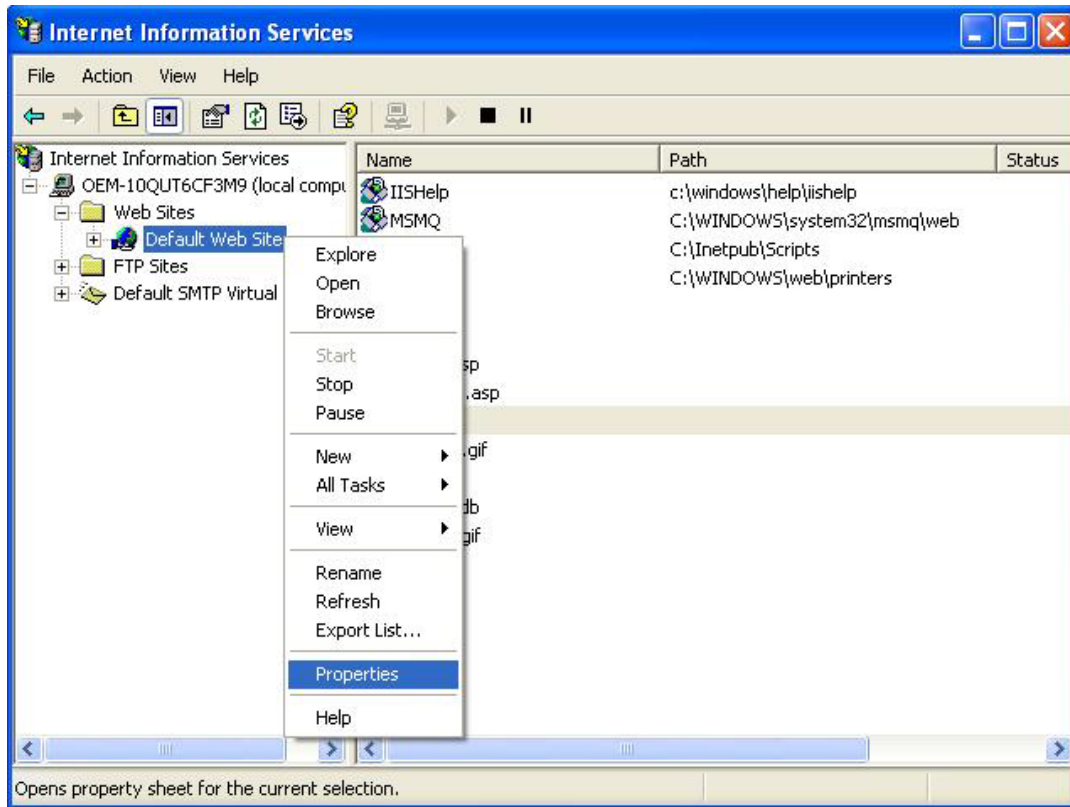


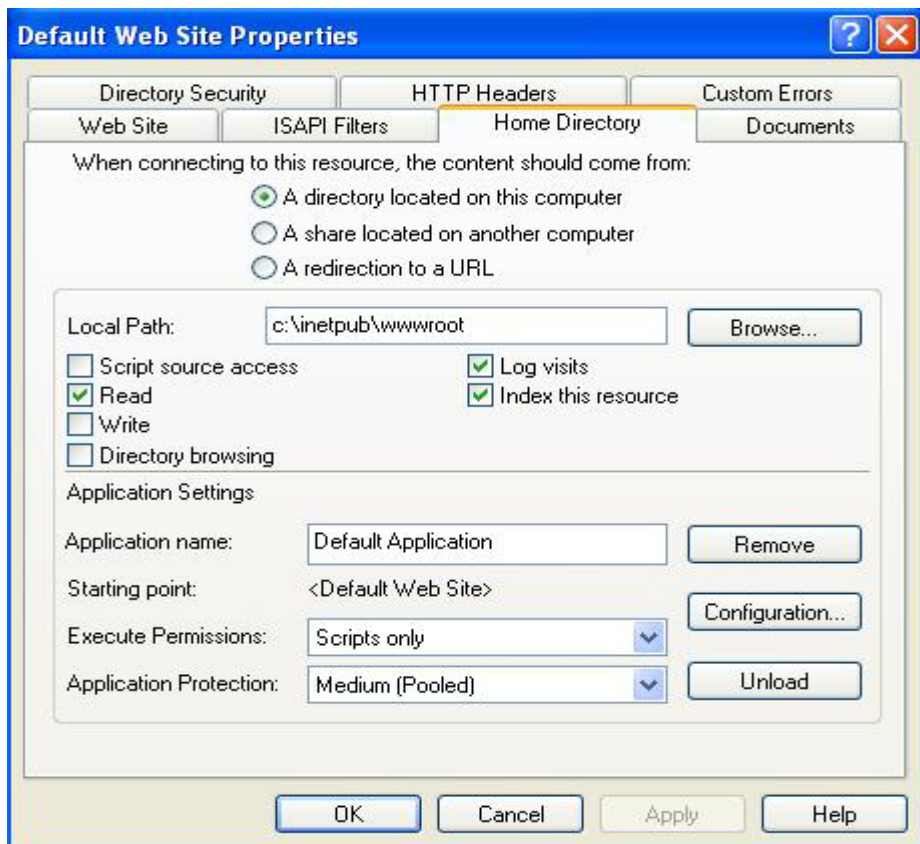
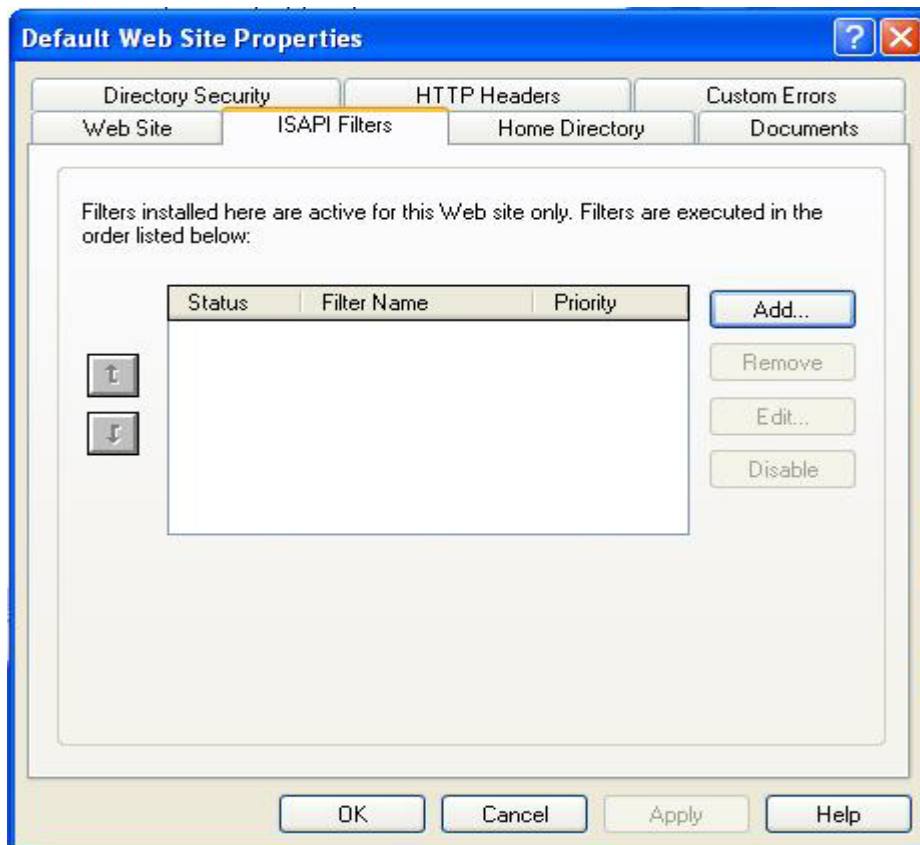
3-3 Web Server

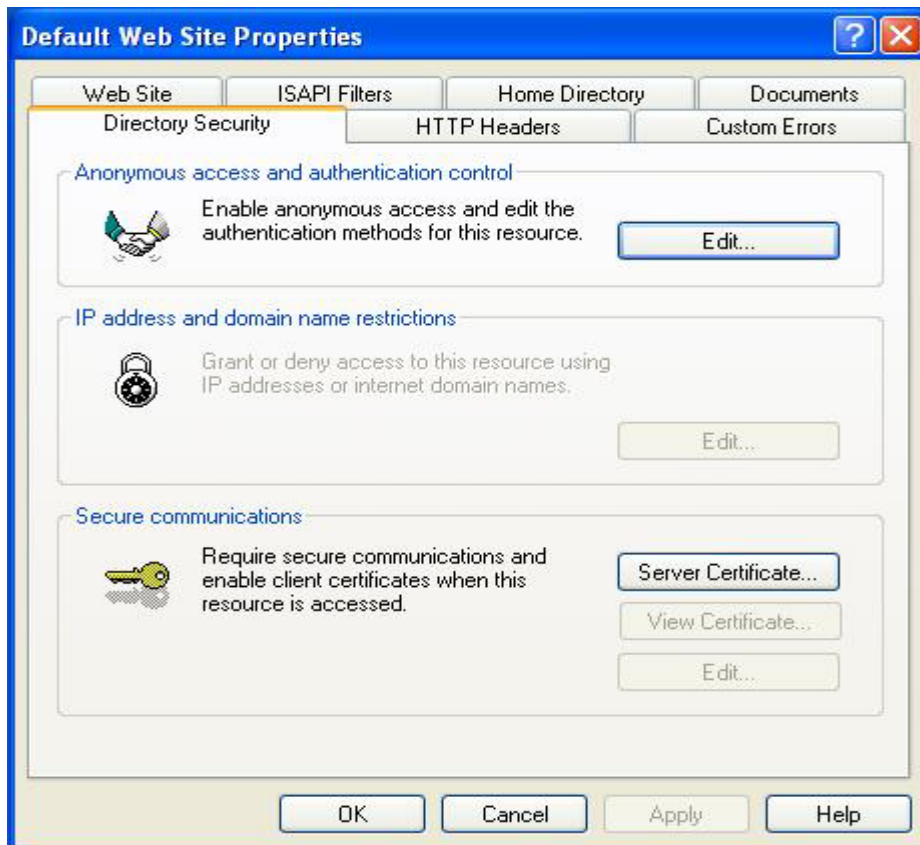
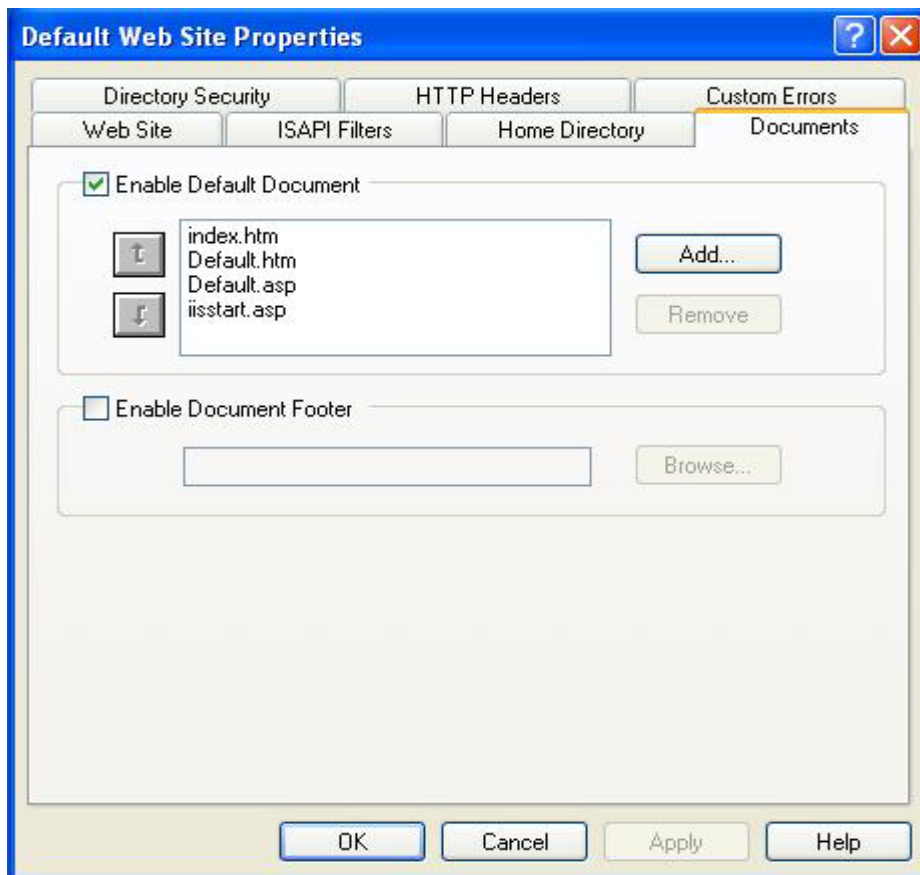
The Web Server (HTTPD) implementation enables you to monitor, configure, and remotely control a device or computer through the use of a Hypertext Transfer Protocol (HTTP) server. The Web Server provides this service for network printers, scanners, and other shared equipment.

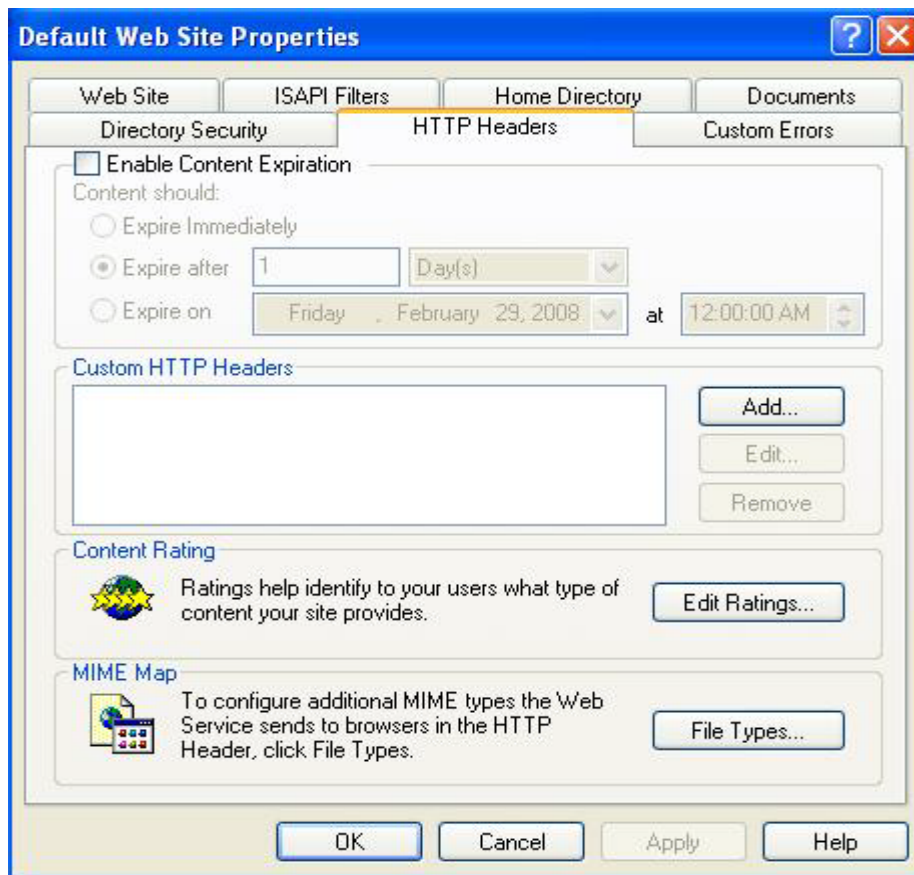
The Web Server applications send Hypertext Markup Language (HTML) pages to a requesting browser. Users only need to have an Internet connection and a browser to be able to make use of the Web Server functionality.

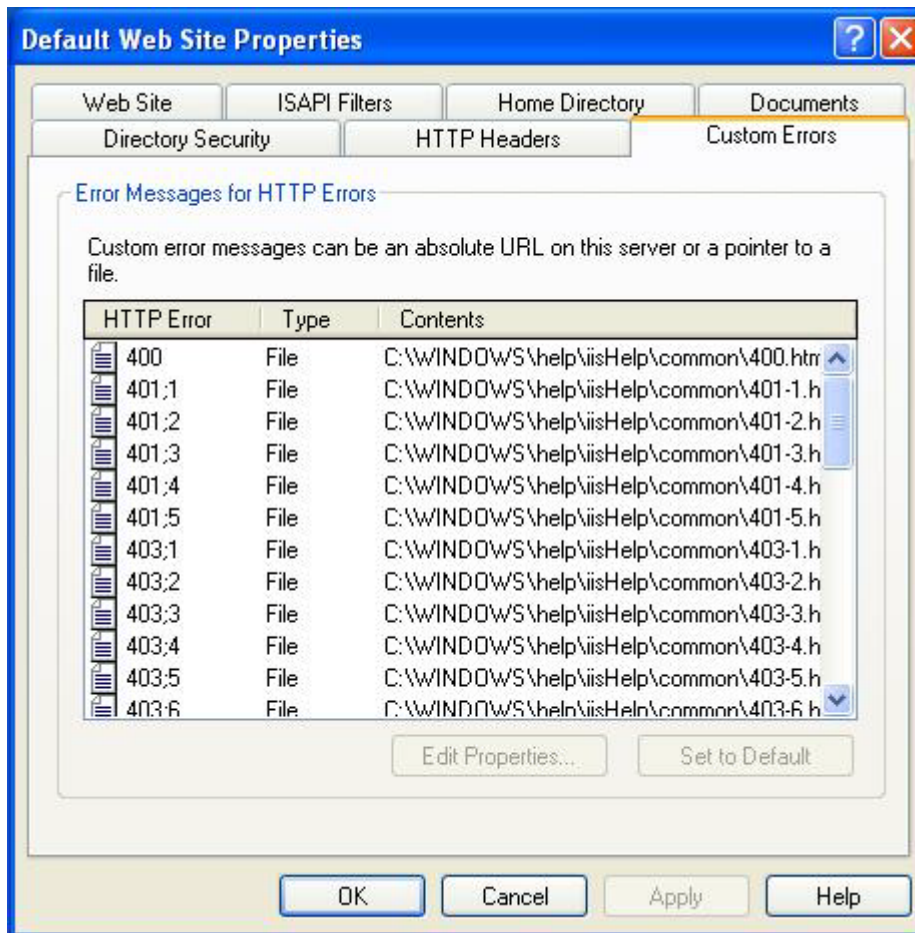
User can set up Web Server Properties at following steps.











3-4 Dial up Network Service

The Dial-up Networking functionality in Windows XP embedded is implemented using Remote Access Service (RAS) and the Point-to-Point Protocol (PPP), Dial-up Networking allows a device to access network resource from a remote location. First, a connection is established with the remote computer, and then the device, or client, can upload and download files.

User can set up Dial-up Networking at following steps.



New Connection Wizard

Getting Ready
The wizard is preparing to set up your Internet connection.




How do you want to connect to the Internet?

- ☐ **Choose from a list of Internet service providers (ISPs)**
- ☒ **Set up my connection manually**
For a dial-up connection, you will need your account name, password, and a phone number for your ISP. For a broadband account, you won't need a phone number.
- ☐ **Use the CD I got from an ISP**

< Back Next > Cancel

New Connection Wizard

Internet Connection
How do you want to connect to the Internet?



☒ **Connect using a dial-up modem**
This type of connection uses a modem and a regular or ISDN phone line.

☐ **Connect using a broadband connection that requires a user name and password**
This is a high-speed connection using either a DSL or cable modem. Your ISP may refer to this type of connection as PPPoE.

☐ **Connect using a broadband connection that is always on**
This is a high-speed connection using either a cable modem, DSL or LAN connection. It is always active, and doesn't require you to sign in.

< Back Next > Cancel

New Connection Wizard

Connection Name
What is the name of the service that provides your Internet connection?

Type the name of your ISP in the following box.

ISP Name

XXXXXXXX

The name you type here will be the name of the connection you are creating.

< Back Next > Cancel

New Connection Wizard

Phone Number to Dial
What is your ISP's phone number?

Type the phone number below.

Phone number:

XXXXXXXXXX

You might need to include a "1" or the area code, or both. If you are not sure you need the extra numbers, dial the phone number on your telephone. If you hear a modem sound, the number dialed is correct.

< Back Next > Cancel

New Connection Wizard

Internet Account Information

You will need an account name and password to sign in to your Internet account.

Type an ISP account name and password, then write down this information and store it in a safe place. (If you have forgotten an existing account name or password, contact your ISP.)

User name:

Password:

Confirm password:

☒ Use this account name and password when anyone connects to the Internet from this computer

☒ Make this the default Internet connection

< Back Next > Cancel

New Connection Wizard



Completing the New Connection Wizard

You have successfully completed the steps needed to create the following connection:

XXXXX

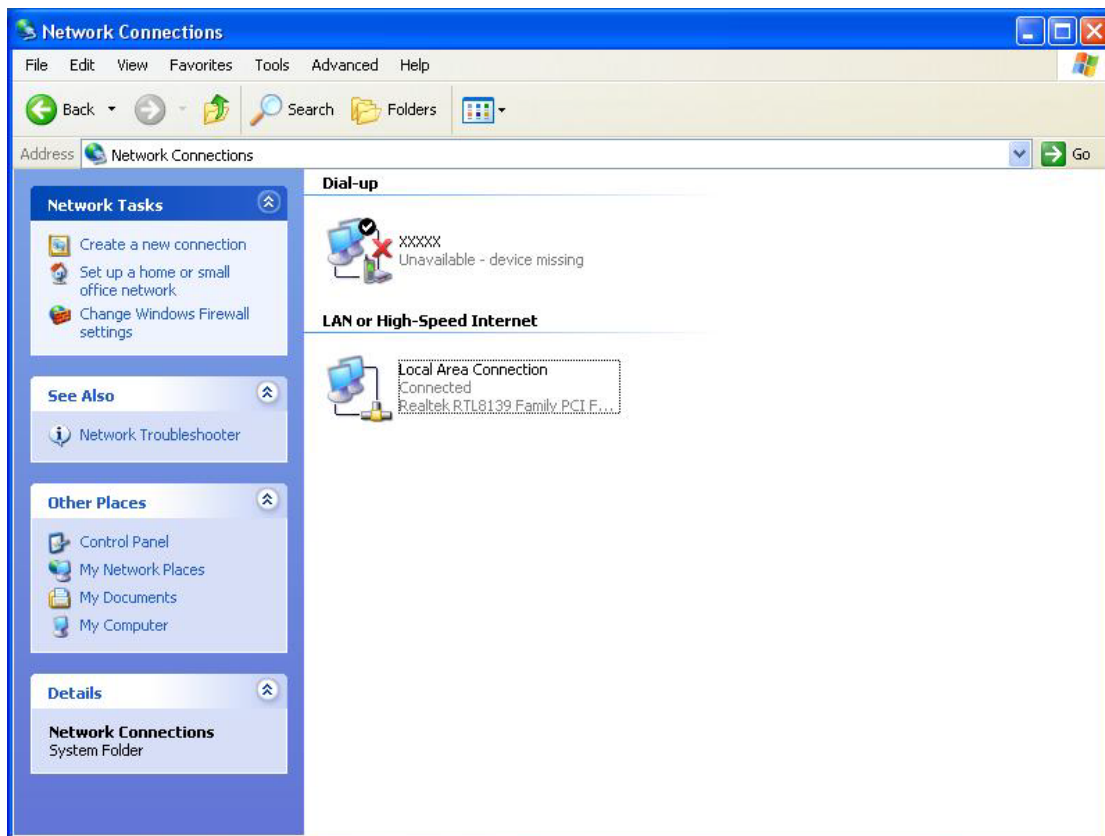
- Make this the default connection
- Share with all users of this computer
- Use the same user name & password for everyone

The connection will be saved in the Network Connections folder.

☐ Add a shortcut to this connection to my desktop

To create the connection and close this wizard, click Finish.

< Back Finish Cancel



3-5 Serial Port Operation Mode

Please refer to the HW manual for serial port setting.

Chapter 4 Software Configuration

For Windows XP embedded details, you can go to Microsoft online resources for more information.

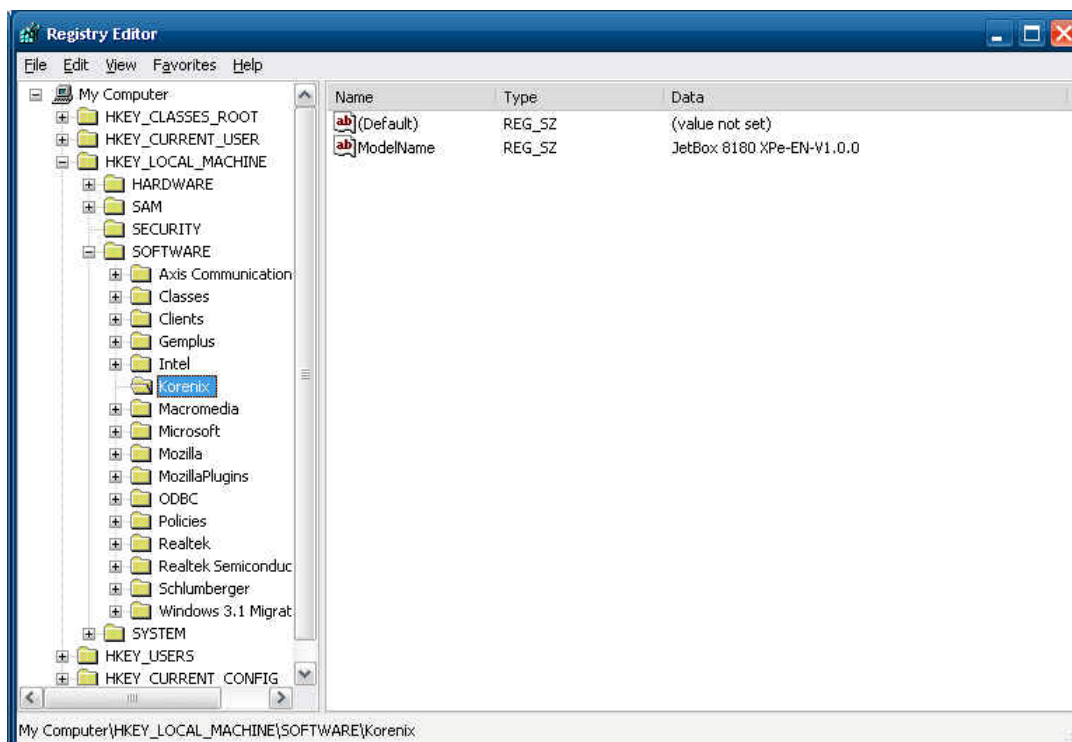
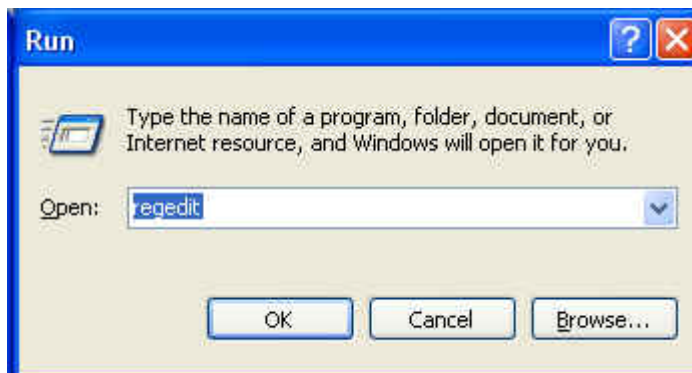
- ❑ The Windows Embedded Developer Center, supported by the Microsoft Developer Network (MSDN), provides detailed technical information, training, and community support:
<http://msdn.microsoft.com/en-us/library/dd256986.aspx>
- ❑ For general product information, please visit
<http://www.microsoft.com/windowseembedded/en-us/default.mspx>

4-1 XPe Firmware Version

Go to **Start**→**Run** and type regedit

You can check the XPe firmware version under the directory

HKEY_LOCAL_MACHINE\SOFTWARE\Korenix



4-2 Multiple Language & Multiple User

Interface (MUI)

The JetBox platform is US English user interface and supports multiple languages such as English, Simplified Chinese, Traditional Chinese, French, German, Italian, Japanese, Korean, Russian, Spanish, Spanish, and Portuguese.

Even though the user interface is US English, other user interface support can be added to a configuration to create a localized run-time image.

Korenix provides multi-language or multi-user-interface customization service. If you have any specific requirements, please contact Korenix directly.

4-3 File-based Write Filter (FBWF)

File-Based Write Filter (FBWF) allows Windows XP Embedded (XPe) to maintain the appearance of read and write access to write sensitive or read only storage. FBWF makes read and write access transparent to applications.

FBWF manager

The FBWF Manager is a command line tool for embedded developers to quickly integrate and prototype the FBWF. FBWF Manager is intended primarily for design time use.

The FBWF Manager command line syntax follows:

```
fbwfmgr [/? | /help /[switch] | /displayconfig | /overlaydetail | /enable | /disable |  
/addvolume [volumename] | /removevolume [volumename] [1|0] |  
/addexclusion [path] | /removeexclusion [path] |  
/setthreshold [threshold] | /setcompression [1|0] | /setpreallocation [1|0] /commit  
[volumename] [filepath] /restore [volumename] [filepath] ]
```

The following table describes the command line switches.

Switch	Description
24	Software Configuration Korenix

Switch	Description
<i>displayconfig</i>	<p>Displays all configuration information for the write filter including protected volumes list, overlay configuration and write through paths. The command returns:</p> <p>State—Indicating current filter state (enable or disable) and state for next boot.</p> <p>Protected Volumes—List of protected volumes including the current and next boot state.</p> <p>Compression—Current and next boot state for cache compression.</p> <p>Threshold—Current and next boot values for the overlay cache threshold.</p> <p>Write Through Paths—Displays a complete list of active and next boot write through paths.</p> <p>Pre-allocation Status—Displays current and next boot status for cache pre-allocation.</p>
<i>overlaydetail</i>	<p>Displays detail on the current overlay contents for all protected volumes. The command returns:</p> <p>Contents—Files and folders currently in the overlay for all protected volumes including sizes (size of data in overlay) and open file handles.</p> <p>Memory Usage—Total amount of memory being consumed by the overlay.</p>
<i>enable</i>	Enables the write filter on the next restart.
<i>disable</i>	Disables the write filter on the next restart.
<i>addvolume</i>	Adds a volume to the protected volume list for next boot.
<i>removevolume</i>	Removes a volume from the protected volume list for next boot.
<i>addexclusion</i>	Adds a write through path to the exclusion list for next boot.
<i>removeexclusion</i>	Removes a write through path from the exclusion list for next boot.
<i>setthreshold</i>	Sets the overlay threshold value for next boot.
<i>setcompression</i>	Sets overlay compression as enabled (1) or disabled (0) for next boot.
<i>setpreallocation</i>	Sets cache pre-allocation as enabled (1) or disabled (0) for next boot.
<i>commit</i>	Commits the changes made to the file to the underlying media.

Switch	Description
	<p>The volume name can either be a case-insensitive volume device name (for example, "\\Device\\HarddiskVolume1"), or a drive letter (for example, "C:" or "D:").</p> <p>Note that the name is not the volume label that Windows Explorer displays before the drive letter.</p> <p>The file path must be an absolute path starting with "\\".</p> <p>Note that the volume must currently be protected. Otherwise, the error message "The system cannot find the drive specified" is displayed.</p>
restore	<p>Discards the changes made to the file, that is, restores the files to its original contents from the underlying media.</p> <p>The volume name can either be a case-insensitive volume device name (for example, "\\Device\\HarddiskVolume1"), or a drive letter (for example, "C:" or "D:").</p> <p>Note that the name is not the volume label that Windows Explorer displays before the drive letter.</p> <p>The file path must be an absolute path starting with "\\". It must be a file. It is acceptable that the file was deleted, in which case it is recovered.</p> <p>Note that the volume must currently be protected. Otherwise, the error message "The system cannot find the drive specified" is displayed.</p>
?	Displays usage and help.
help / [switch]	Displays help information for a specific FBWF Manager switch.

If no switch is provided the FBWF Manager displays all the configuration information, just like the DisplayConfig switch.

The following table describes the input parameters.

Input field	Meaning
volumename	Full path to a volume
1	Remove exclusion list
0	Preserve exclusion list
path	<p>Full file or directory path, including the drive letter.</p> <p>Please note that file names are passed to fbwfmgr as a command line argument, which means backslashes and double quotes are interpreted differently. For</p>

example, **"file name"** becomes simply **"file name"** because the first backslash acts as an escape character. To get **"file name"**, specify **"file name"** on the command line.

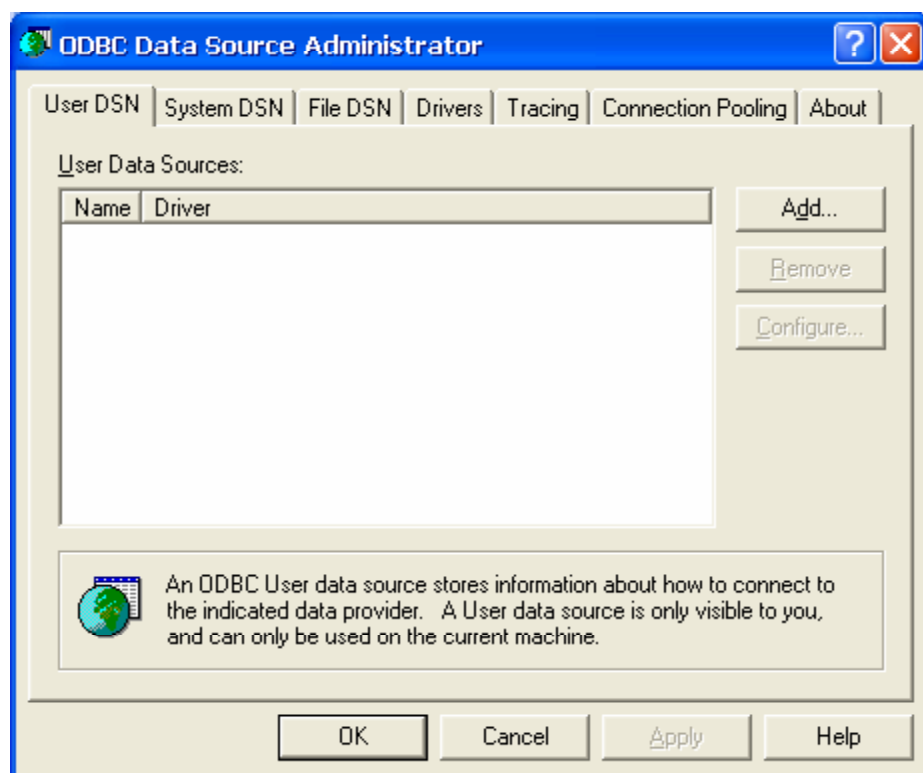
threshold Overlay threshold in MB

FBWF does not resolve substituted paths, use complete file names instead.

4-4 ODBC Data Source Administrator

Go to **Control Panel**→**Administrative tools**→**ODBC**

This is a database source configuration tool for users to add, delete, or set up a data source and display information about the installed ODBS drivers. You can create a new data source or trace the calls to ODBC functions.



4-5 Recovery CD

In some severe circumstances, such as when a run-time image is corrupted, it may be necessary to start your device from a bootable CD (recovery CD). Korenix provides the recovery CD of the JetBox to install a new copy of the run-time image that was

installed onto the JetBox before it left the factory.

Following is the step by step to use the recovery CD:

1. Plug a USB keyboard into the JetBox
2. Plug a USB CD-ROM into the JetBox and Insert the recovery CD into the USB CD-ROM
3. Change the BIOS boot device setting of the JetBox
 - 3.1 When the JetBox boots up, press the “Delete” key on the keyboard to enter the BIOS setting
 - 3.2 Choose the “Advanced BIOS Features” item from the “Initial Setup Screen” menu.
 - 3.3 Change the first boot device from “HDD-0” to USB-CDROM”, then save and exit Setup dialogue.
4. The JetBox is booted from the USB CD-ROM and the recovery procedure runs automatically

4-6 Visual Studio 2005

Microsoft Windows XP Embedded is a componentized version of the Microsoft Windows XP Professional operating system that uses the same binary source code. This shared binary source code makes it possible for Windows XP Embedded to provide device operating systems that are not only scalable and feature-rich, but also fully compatible with Windows XP Professional. This means that you can use existing Windows-based applications on your devices. And you can use many of the same resources for embedded application development that are used to develop applications for Windows XP Professional. For example, application developers for Windows XP Embedded can use Microsoft Visual Studio to program to Windows application programming interfaces (APIs).

Visual Studio 2005 (VS 2005) is an integrated IDE enabling development of C++, C#, and Visual Basic and J# applications under one roof. It includes numerous features that help in building windows applications with less effort. The IDE is designed primarily for building applications with any .NET languages. The IDE includes features like an automatic build utility, a syntax highlighter, an easy-to-use debugger and many more.

Chapter 5 Customer Service

Korenix Technologies Co., Ltd.

Business service: sales@korenix.com

Customer service: koreCARE@korenix.com