

IT-150

LCD Color POS System



User Manual

Index of Contents

<u>0. Before Installation</u>	3
<u>1. Appearance</u>	4
<u>2. Control Panel</u>	7
<u>2.1 Push Button</u>	7
<u>3. Rare Panel I/O Connector</u>	8
<u>4. Hardware Installation</u>	9
<u>5. Touch Driver Installation</u>	10
<u>5.1 ELO Touch</u>	10
<u>6. Cleaning and Safety</u>	17
<u>6.1 Cleaning Touch LCD Monitor</u>	17
<u>6.2 Screen</u>	17
<u>6.3 Case</u>	17
<u>6.4 Safety</u>	17
<u>Care and handling of your touch monitor</u>	18
<u>7. Troubleshooting</u>	19
<u>8. Specifications</u>	20
<u>Appendix A VFD Customer Display Installation</u>	21

Attention

1. This manual contains important information for the proper setup and maintenance of the products. Before setup and using of the products, please read through this manual clearly.

2. This specification shall apply only to the product(s) coming along with this manual inside.

3. The specification may be modified without any notice in advance. Please

inquire your supplier for latest specification, driver, or manual.

0. Before Installation

When unpacking please check you have the following items.

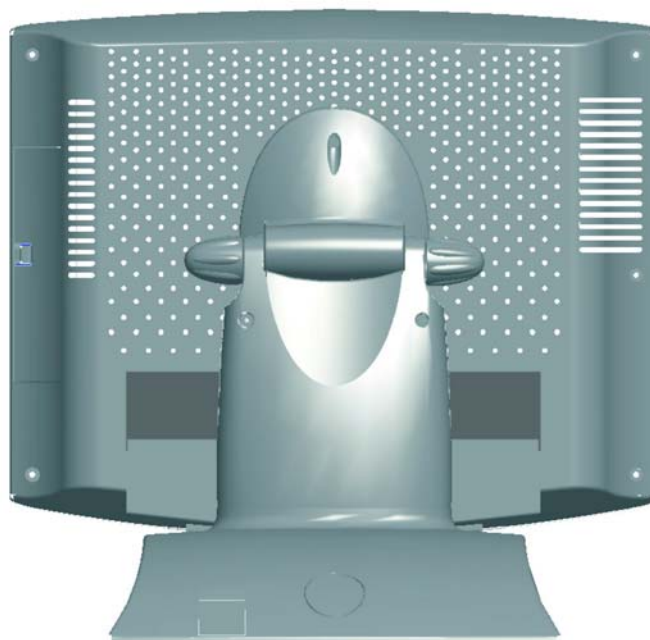
- ◆ IT-150 Machine
- ◆ Accessory Package
 - User Manual
 - Driver CD-ROM
 - Power cord

1. Appearance

Front View



Back View



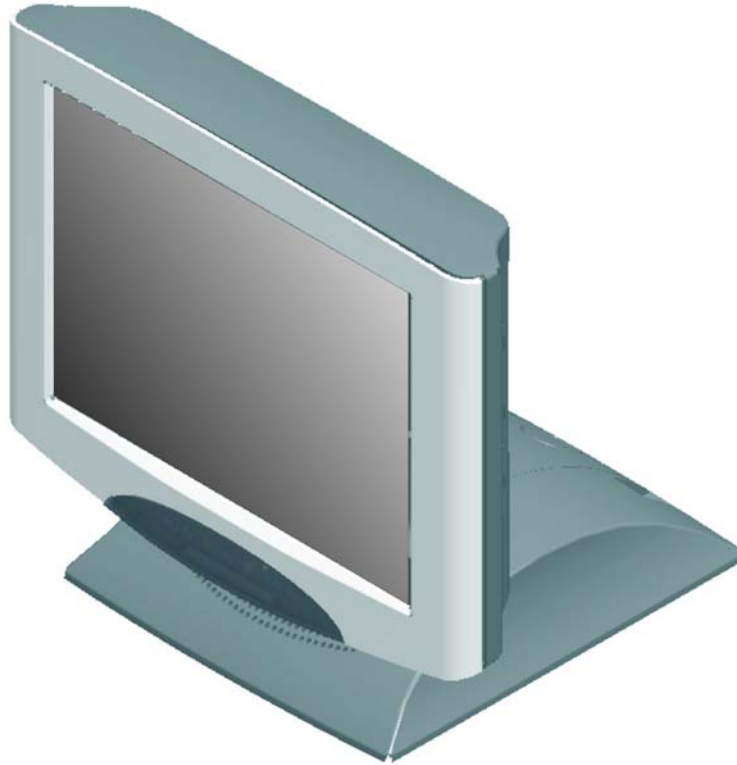
Left Side View



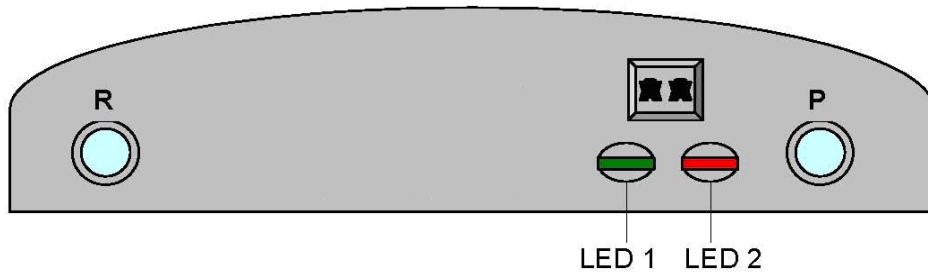
Right Side View



Right Front View



2. Control Panel



2.1 Push Button

Push Button	Description of Function
P	Power On/Off
R	Reset

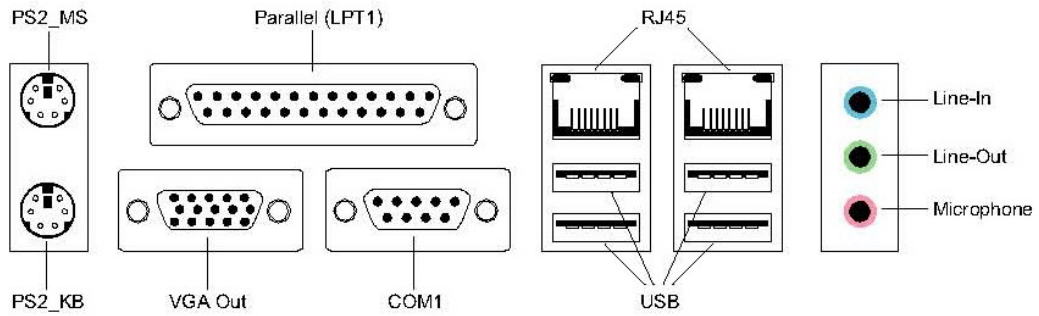
2.2 LED Indicator

LED Signal	Description of Function
LED 1 in Green	Power LED
LED 2 in Red	HDD LED

3. Rare panel I/O Connector



Back Panel

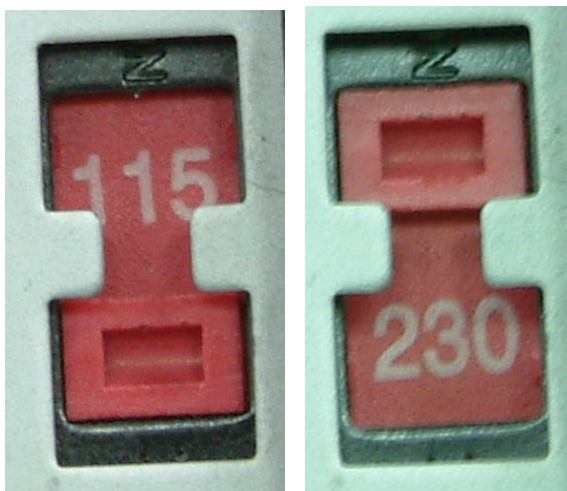


4. Hardware Installation

1. Connect the power cord to IT-150 base



2. Select right voltage if the power supply has the switch as in pictures below:



If there is not any switch on the power supply then pass this procedure.

3. Connect the power cord to an AC power socket

5. Driver Installation

5.1 ELO Touch

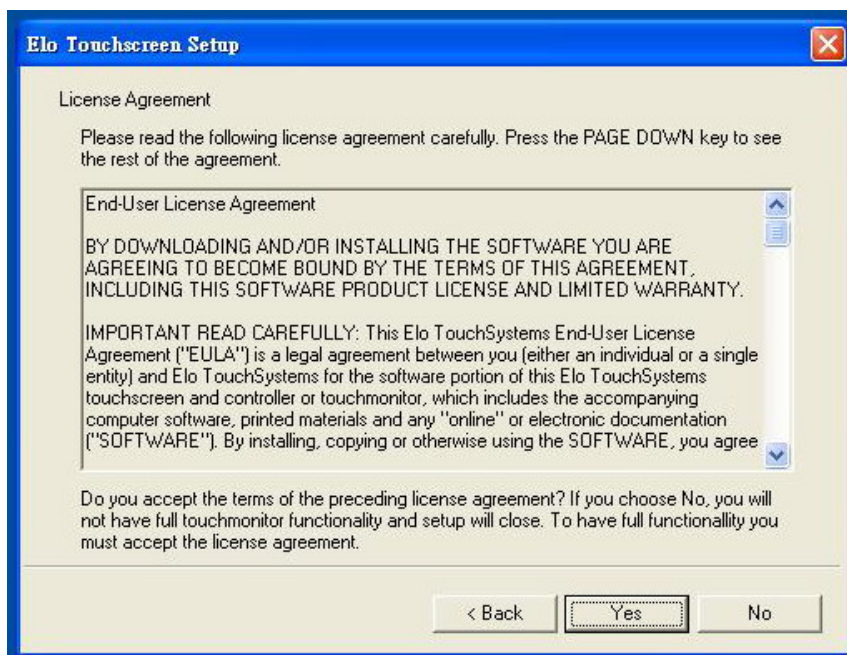
1. Insert Driver CD-ROM into CD-ROM driver. The setup program will auto run. If the setup program does not auto run, click the “EloCD.exe” program in the Driver CD-ROM. Press “Install Driver For This Computer” to start driver installation.



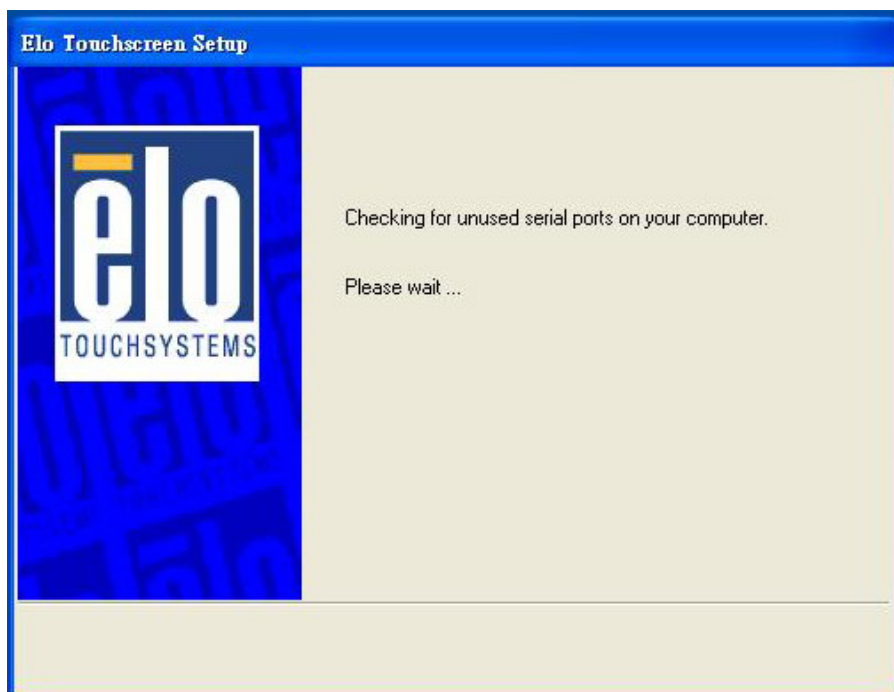
2. Check “Install Serial Touchscreen Drivers and press “Next”.



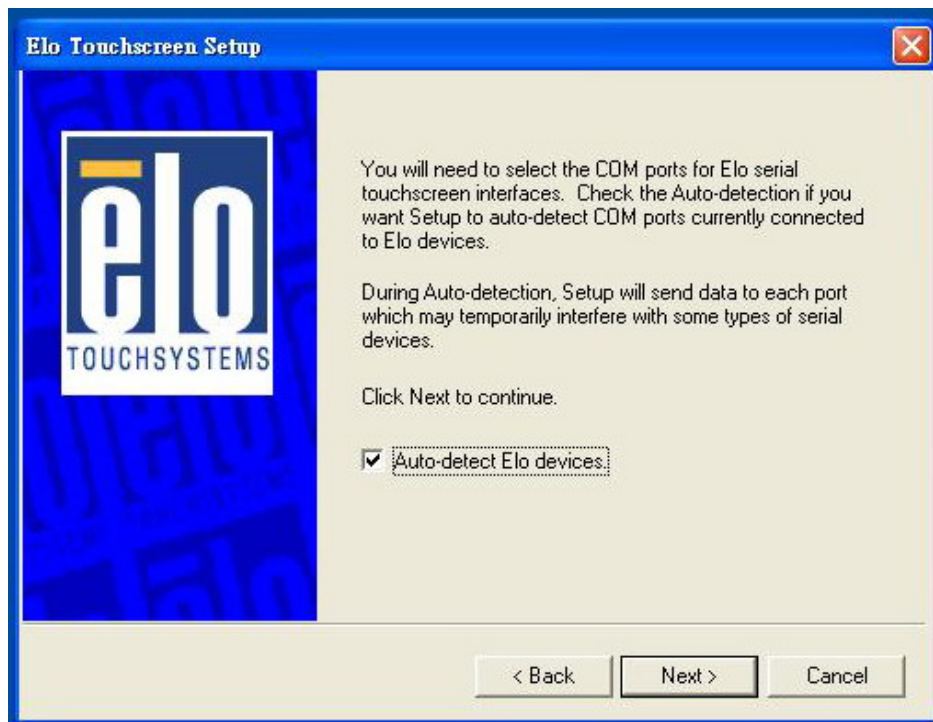
3. Read the License Agreement and then press the “yes” button.



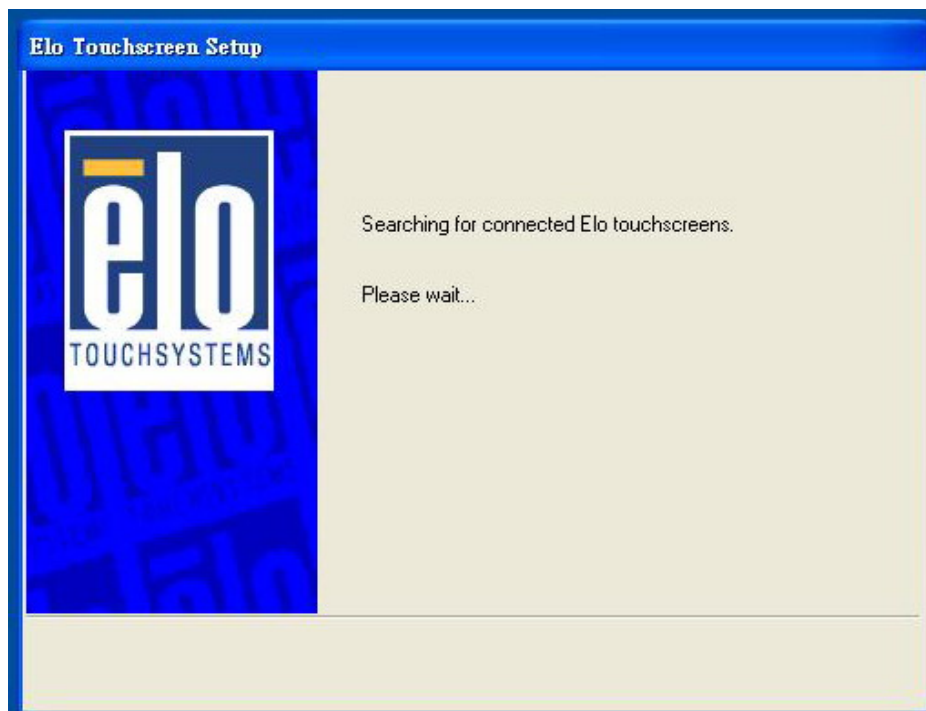
4. Wait the setup program checking serial ports.



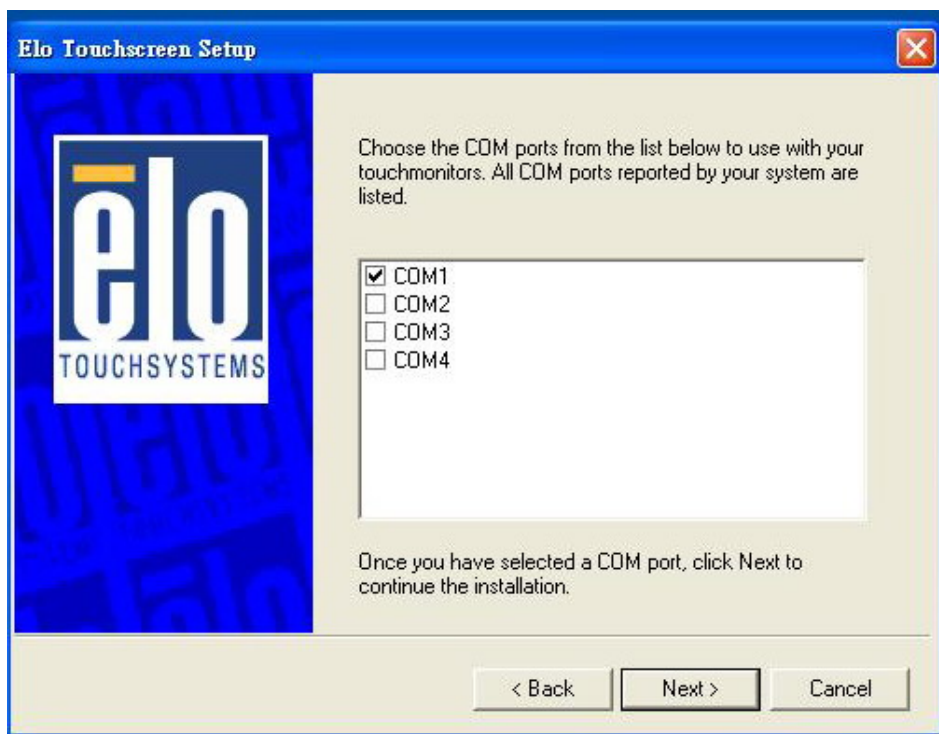
5. Check “Auto-detect Elo devices” to select the COM port that connected to Elo devices.



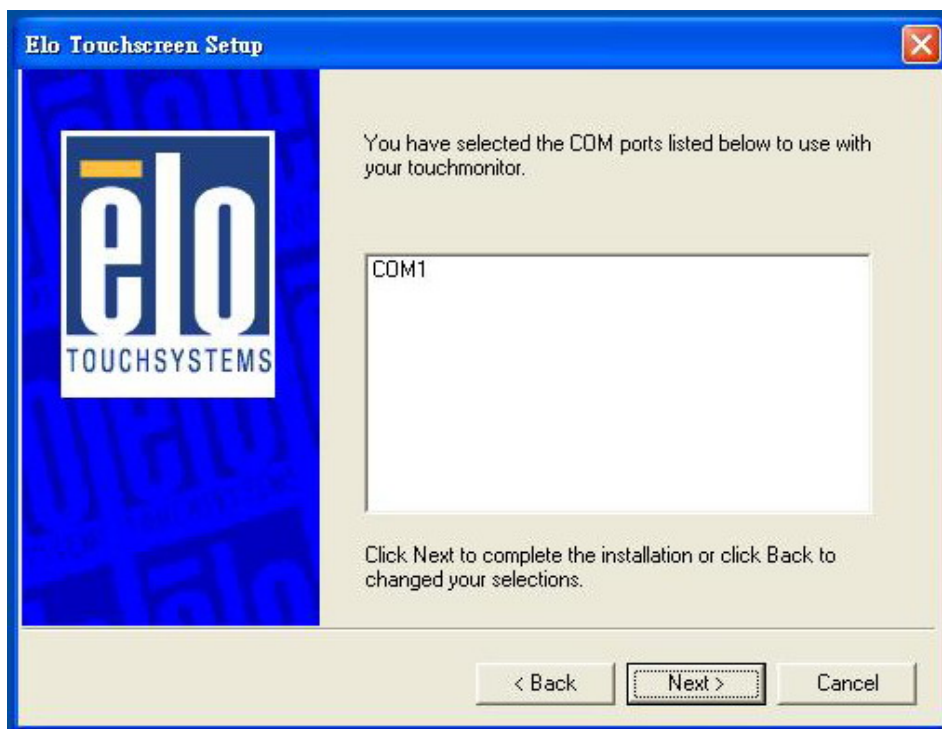
6. Wait the setup program searching for connected touchscreen.



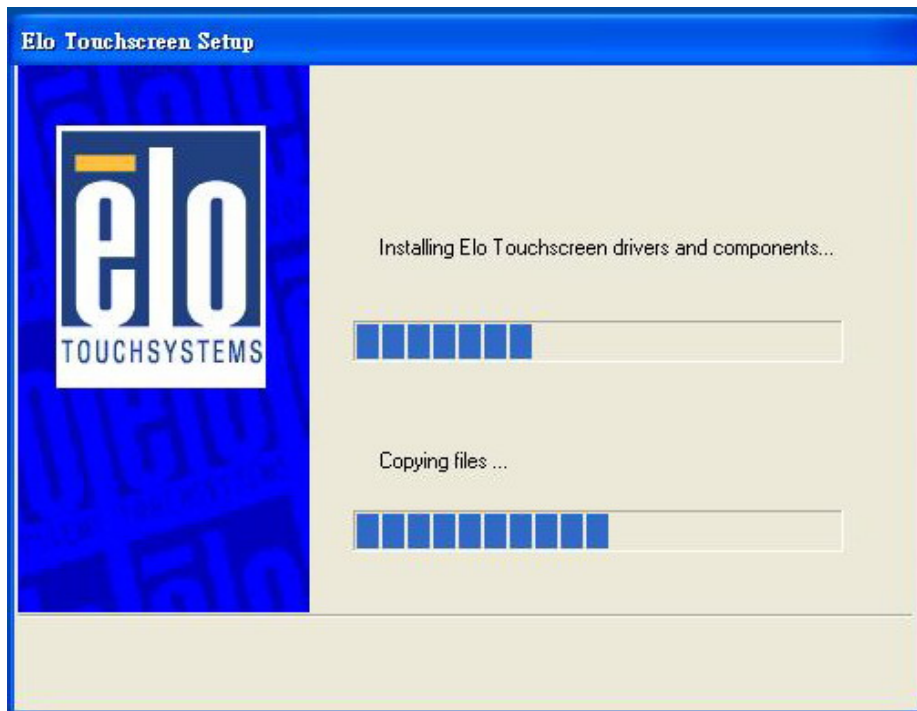
7. Choose one COM port and press "Next" to continue.



8. Make sure the COM port listed and press "Next" button.



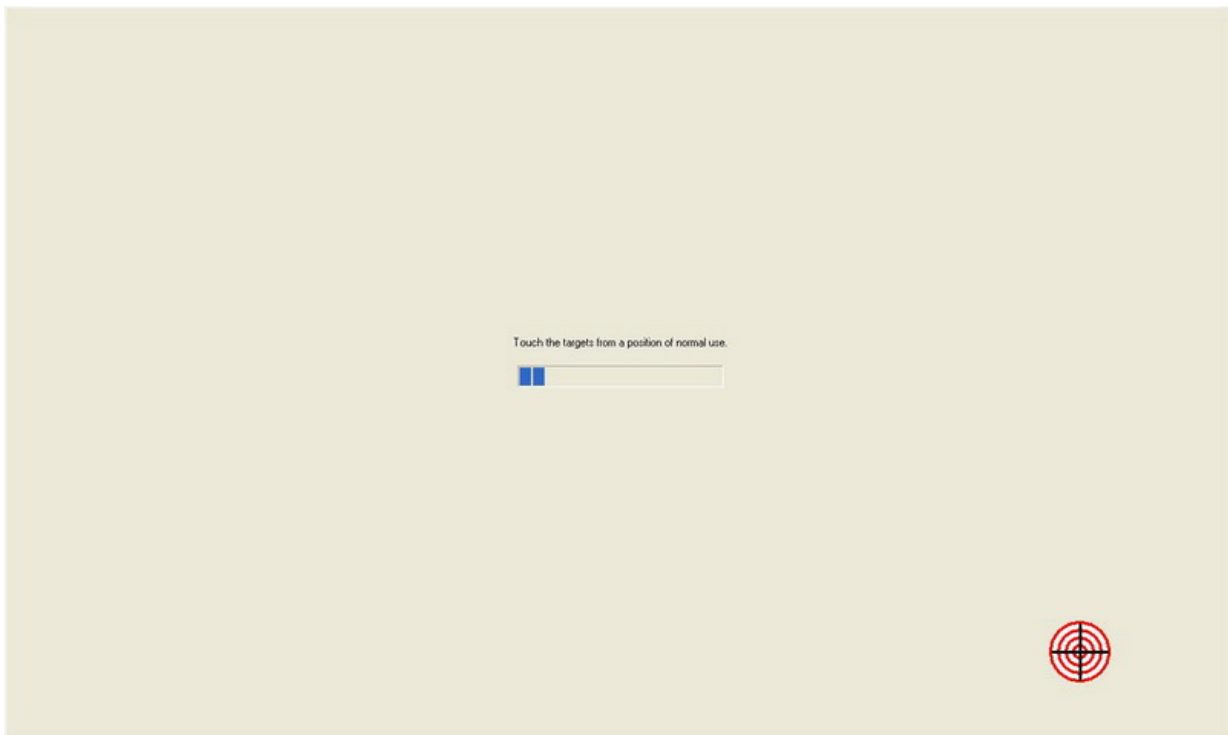
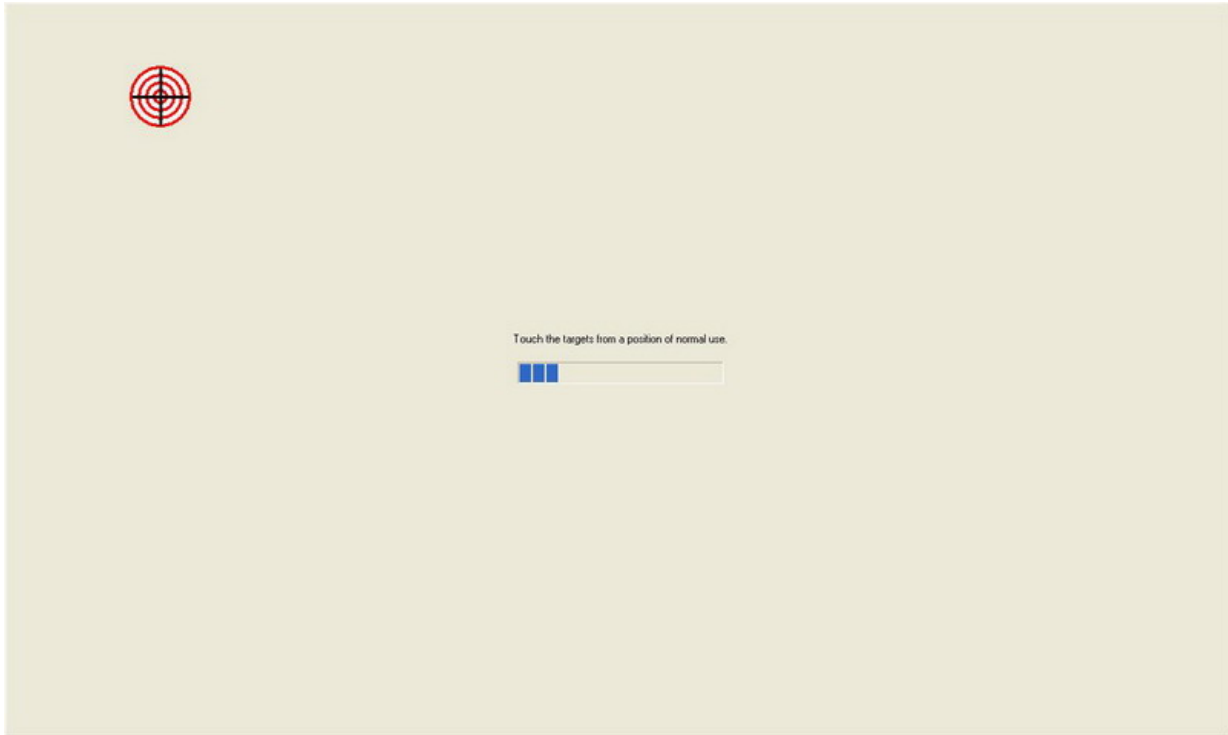
9. Wait setup program to complete.

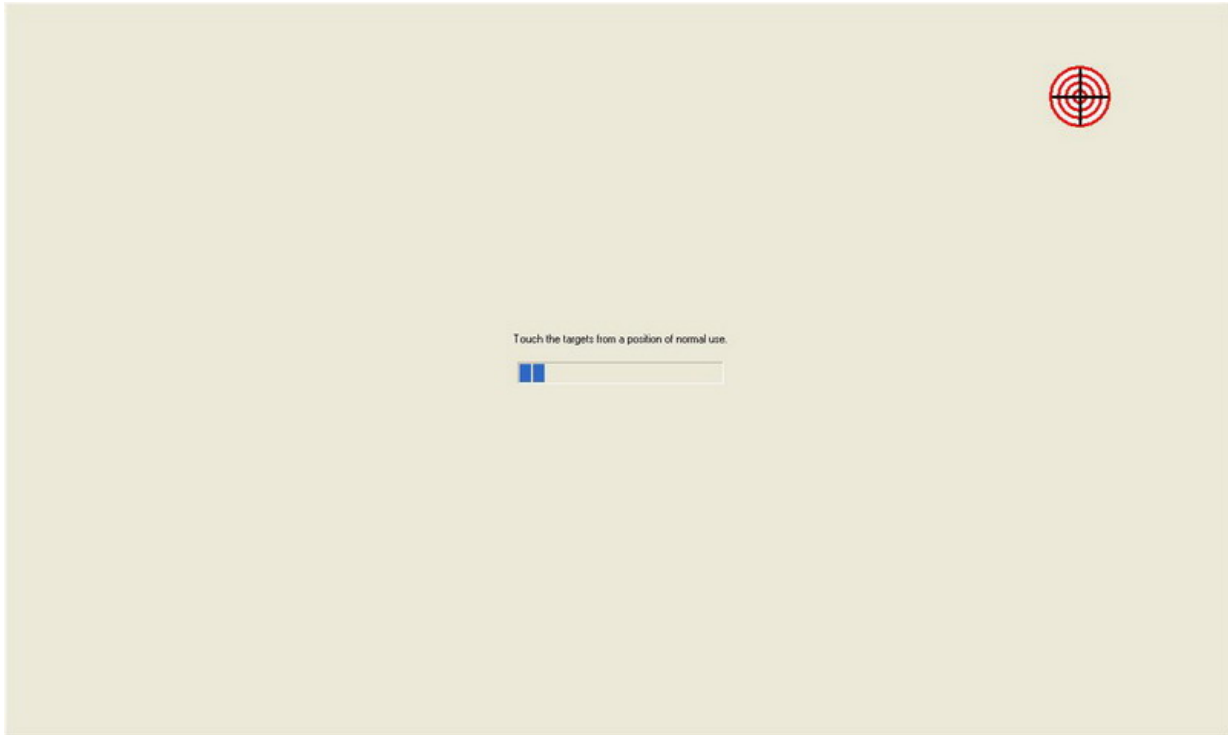


10. Check “Calibrate Elo Touchscreen Monitors” and press “Finish” button to complete driver setup and start to calibrate touchscreen.

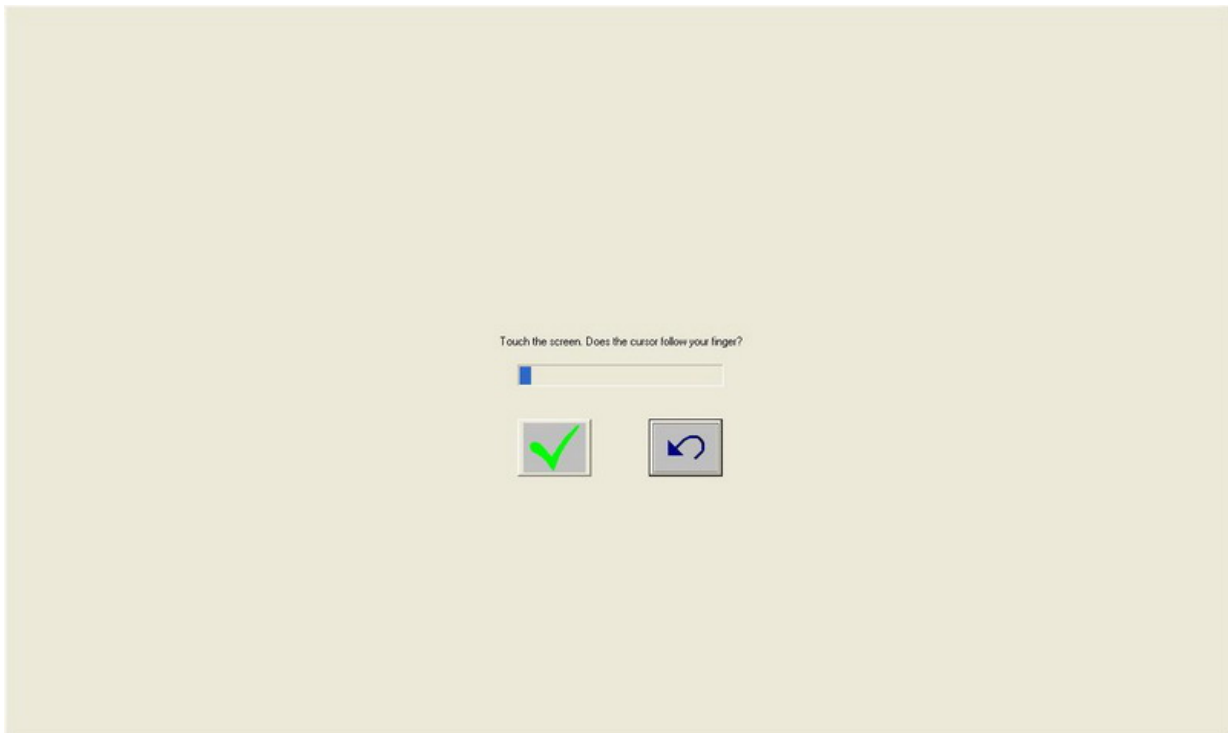


11. Press the targets with one finger to calibrate touchscreen.





12. Press the “✓” button to finish calibration.



6. Cleaning and Safety

6.1 Cleaning Touch LCD Monitor

Before cleaning, please power off the computer system and disconnect the AC outlet to prevent the damage. After finishing of cleaning, please make sure the monitor is completely dry before you reconnect the cables and power it on. Do not use any liquid or spray cleaners directly on surface of screen or cabinet. Please use a soft, clean, lint-free cloth with cleaners to clear your monitor.

6.2 Screen

Please use a soft, clean, lint-free cloth to remove the dust and dirt from your monitor. For the fingerprints and smudges, please use a soft cloth with cleaners to clean them.

6.3 Case

Please clean the cabinet with a soft cloth slightly moistened with a mild detergent solution. Please rinse the cloth with clear water, wring it dry, and wipe the cabinet to remove any detergent residue.

6.4 Safety

- (1) To reduce risk of electric shock, please follow all safety notices, never open the case by yourself, and turn off the power before cleaning.
- (2) The monitor is equipped with a power cord. (The type of power cord may be different according to different countries.) The power cord plug only fit into a safety ground outlet. Do not attempt to fit the plug into an outlet that has not been configured for this purpose. Do not use a damaged power cord. Please use the only power cord that comes with your monitor. Using an unauthorized power cord may invalidate the warranty of the products.
- (3) Please do not insert or block anything inside the four internal edges of the screen.
- (4) Please remain dry for monitor when you use. Please do not pour liquid into or onto machine. If your computer becomes wet, please do not attempt to repair by yourself and please ask a qualified service technician to check it before you turn on the power.

Care and handling of your touch monitor

The following tips will help you keep your touch monitor functioning at the optimal situation:

- Please protect your touch monitor away from extremely high or low temperatures.
- Please keep your touch monitor dry and away from humid environment.
- Please do not wash with a wet cloth or pour fluid on it.
- Under the condensation for your touch monitor, please do not power on until the condensation is evaporated completely.
- Please keep your touch monitor away from bumps and drops.
- Please keep your touch monitor away from dust, sand, and dirt.

7. Troubleshooting

- ⑦ **Can not turn this computer on**
 - ☞ Check if the power cord is properly connected. If not, connect it again.
 - ☞ Press the “P” button to turn it on again.

- ⑦ **The image is distorted, flashes or flickers**
 - ☞ Select the correct resolution, refresh rate and make adjustments.

- ⑦ **The image is displaced in one direction**
 - ☞ Select the correct resolution, refresh rate and make adjustments.

- ⑦ **The image is blurred**
 - ☞ Change the resolution, refresh rate and make adjustments.

8. Specifications

Motherboard	Motherboard Type	VIA C3	Intel
	Form Factor	Mini-ITX	Mini-ITX
	System Chipset	VIA CLE266	Intel 852GM
		VIA VT8235	Intel ICH4
	CPU Supporting	Embedded VIA Low Power Consumption C3 series (FAN required)/ Eden Series (FAN-less) CPUs	Intel Pentium-M and Celeron-M Socket 479 Processor
	FSB	133MHz	400MHz
	DIMM Socket	One 184-PIN DIMM DDR266 SDRAM Socket up to 1GB	One 184-PIN DIMM DDR266 SDRAM Socket up to 1GB
	VGA Adapter	Integrated VIA UniChrome AGP Graphics	Integrated Intel 852GM GMCH
	Audio	VIA VT1612A AC'97 Codec	Realtek AC'97 Codec
	LAN Adapter	Dual LAN	
		VIA VT6105 LOM 10/100 Base-T Ethernet	Realtek 8100C 10/100 Base-T Ethernet * 2
		VIA VT6103 PHY	
	I/O Connector	Serial Port x 1	
Parallel Port x 1			
USB Port x 4			
PS/2 Mini DIN Keyboard Port & Mouse Port			
VGA Port x 1			
RJ-45 Ethernet Port x 2			
Audio Line-in/out and Mic-in Jacks			
Monitor	Size	15" TFT LCD Screen	
	Resolution	1024 x 768	
	Brightness	250cd/m ²	
	Contrast Rate	400:1	
Device	2.5" IDE HDD x 1 (Support Ultra DMA-66/100)		
	CD-ROM / CD-RW / DVD-ROM x 1		
Power Supply	125W ATX Power Supply		
Dimension	380(W) x 300(D) x 400(H) mm		

Appendix A

VFD Customer Display Installation

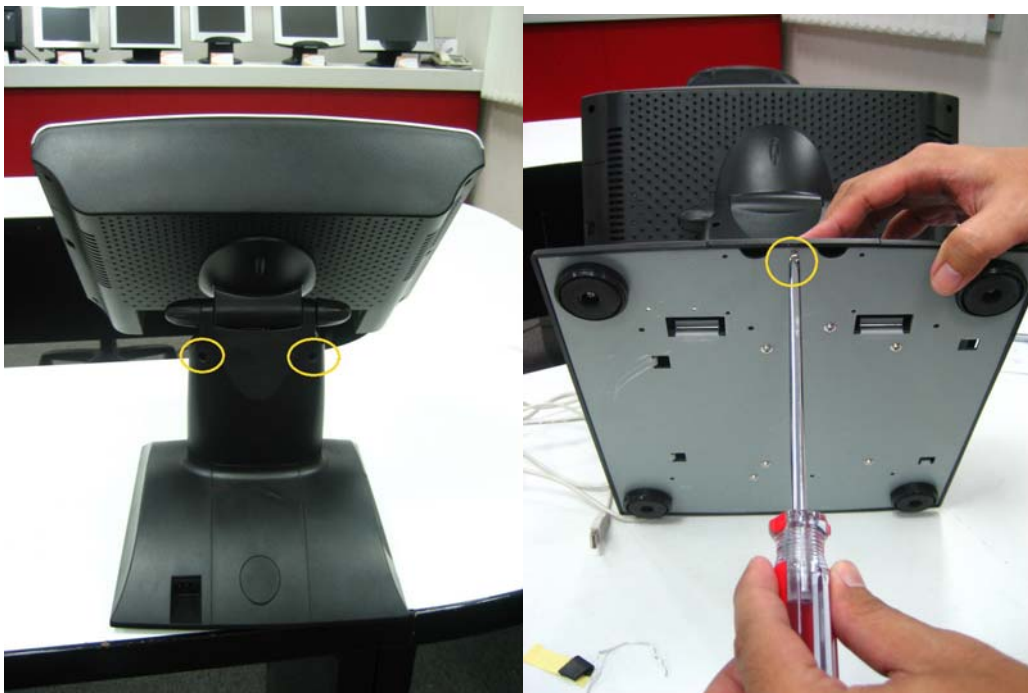
IT-150 with VFD Customer Display



VFD Customer Display Installation Procedure



Before installing VFD Customer Display, the stand back cover (A) and cover on the base (B) have to be removed.



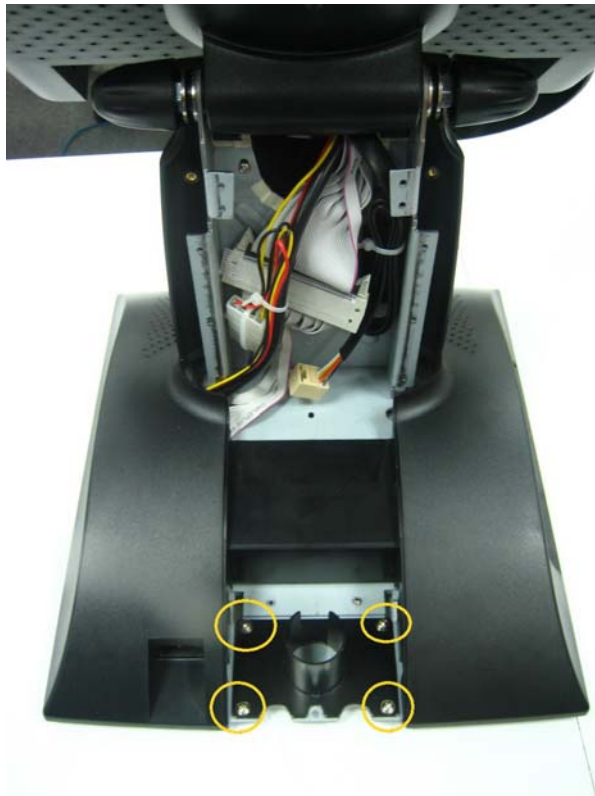
Remove the screws circled.



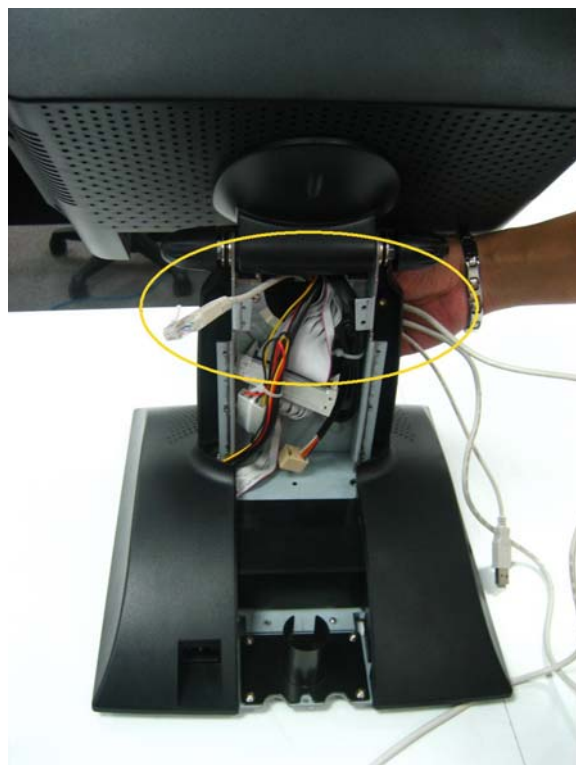
Remove stand back cover and cover on the base.



Detach the elliptic part from the cover.



Fix metal support base with four screws.



Put VFD Customer Display cable through the stand.



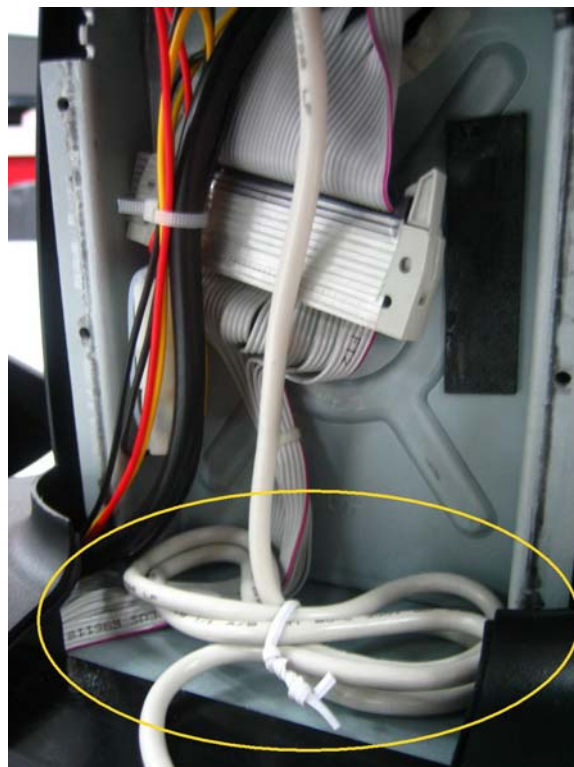
Connect RS-232 connector for data transmission and USB connector for power.



Put VFD Customer Display cable through the cover and support pipe.



Assemble VFD Customer Display to base.



Arrange and put VFD Customer Display cable behind stand.



Fix covers by screws.



Finish