

SCANNER



User's Guide

Genius Scanner

Discover New 

www.geniusnet.com.tw

All trademarks and brand names mentioned in this publication are property of their respective owners.

© 2005 KYE Systems Corp. All rights reserved. No portion of this document may be reproduced without permission.

Table of Contents

INTRODUCTION	1
How to Use This Guide	1
Conventions of this Guide.....	2
A Note about Icons	2
System Requirements	2
Package Contents	3
CHAPTER I. INSTALLING GENIUS SCANNER.....	4
Software Requirements	4
Hardware Requirements.....	4
Installing and Setting up the Scanner	5
<i>Step 1. Hassle-Free Lock Mechanism</i>	<i>5</i>
<i>Step 2. Connecting the Genius Scanner to Your Computer</i>	<i>5</i>
<i>Step 3. Installing the Software.....</i>	<i>6</i>
Software Setup Troubleshooting	7
Installing Additional Software.....	8
Uninstalling the Scanner.....	8
Scanner Setup After Windows XP Upgrade	8
CHAPTER II. USAGE AND MAINTENANCE.....	10
Operating the Scanner.....	10
<i>Testing the Scanner</i>	<i>11</i>
<i>Using the Scanner Buttons.....</i>	<i>12</i>
<i>Defining Custom Button.....</i>	<i>12</i>
Scanning the Films	13
<i>Installing the Transparency Adapter.....</i>	<i>13</i>
<i>Film Holders.....</i>	<i>14</i>
<i>Scanning Negative and Positive Films</i>	<i>14</i>
<i>Important Notes about Scanning Film</i>	<i>17</i>
The Scanner Utility Program.....	18
<i>Scanner Connection</i>	<i>18</i>
<i>Aligning the Scanner</i>	<i>18</i>
Lamp Control	19
<i>Via the Scanner Utility</i>	<i>19</i>
<i>Via the Power Save button.....</i>	<i>19</i>
Base Stand	20
Maintenance	21
APPENDIX A: SPECIFICATIONS.....	22
APPENDIX B: CUSTOMER SERVICE AND WARRANTY.....	23

Statement of Limited Warranty	23
FCC Radio Frequency Statement.....	24
CONTACTING GENIUS.....	26

Introduction

Welcome to the world of Genius scanners, the ultimate in imaging. Your new scanner will improve the professionalism of your day-to-day computing tasks by allowing you to input images and electronic text into your computer system.

Like all of our products, your new scanner is thoroughly tested and backed by our reputation for unsurpassed dependability and customer satisfaction.

The last page of this user's manual provides more information for contacting Genius Service Center. Please feel free to contact us or visit GeniusLife Homepage (<http://www.geniusnet.com.tw>) for getting better service.

Thank you for choosing Genius Product. We hope you will continue to turn to us for additional quality products as your computing needs and interests grow.

How to Use This Guide

This User's Guide provides instructions and illustrations on how to install and operate your scanner. This guide assumes the user is familiar with the Microsoft Windows XP/Me/2000/98. If this is not the case, we suggest you learn more about Microsoft Windows by referring to your Microsoft Windows manual before using your scanner.

The **Introduction** section of this manual describes the box contents and minimum computer requirements to use this scanner. Before you start installing your Genius scanner, check the box contents to make sure all parts are included. If any items are damaged or missing, please contact the vendor where you purchased your scanner or Genius' customer service directly at one of the locations listed at the back of this manual.

Chapter I describes how to install scanner's software and connect the scanner to your computer.

Note: The scanner connects to your computer through the Universal Serial Bus (USB). If your computer does not support USB technology, you will need to purchase a USB interface card to add USB capabilities to your computer, or buy and install USB connectors if your motherboard has USB capabilities. This guide assumes that your computer is USB-ready and has a free USB port.

Chapter II describes how to use, maintain and clean your scanner. It also describes how to use the scanner utility program which helps you troubleshoot and fix connection problems which may have occurred during the scanner installation.

Appendix A contains the Specifications of this Genius scanner.

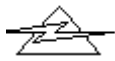
Appendix B contains Genius' limited warranty agreement and FCC statement concerning the product.

Conventions of this Guide

Bold —	Important note or first use of an important term in a chapter.
[XXX] —	Represents commands or contents on your computer screen.

A Note about Icons

This guide uses the following icons to point out information that deserves special attention.



Danger

Danger: A procedure that must be followed carefully to prevent injury, or accidents.



Caution

Caution: Information that, if not followed, may result in data loss or damage to the product.



Attention

Pay Special Attention: Instructions that are important to remember and may prevent mistakes.

System Requirements¹

- Windows/Intel Compatible Personal Computer
 - Pentium III or above
 - CD-ROM Drive
 - 128 MB RAM
 - 300 MB Free Hard Disk Space
 - USB Port
 - Microsoft™ Windows XP, 98, Me, and 2000 Professional
- NOTE:** Windows NT 4.0 does not support Universal Serial Bus (USB) connectivity.
- Video card that supports 16-bit color or greater

¹ Higher requirements might be needed when you scan or edit a large quantity of image data. The system requirements herein are only a guideline, as in general the better the computer (motherboard, processor, hard disk, RAM, video graphic card), the better the results.

Package Contents²



1. The Scanner³
2. Power Adapter
3. USB Cable
4. Quick Installation Guide
5. Setup / Application CD-ROM includes the following software applications⁴
 - Scanner Setup Program
 - Action Express (Scanner Button Setting Software)
 - Genius TWAIN Program
 - NewSoft Presto! PageManager (Photo Management Software)
 - NewSoft Presto! ImageFolio (Imaging Editing Software)
 - NewSoft Presto! Mr. Photo (Web Photo Software)
 - ABBYY FineReader 5.0 Sprint (Text Recognition Software)
 - IRIS Cardiris
 - Adobe Acrobat Reader (PDF Product Manuals Reading Program)
 - This User's Guide (Electronic Version)
6. Reflective Document Mat
7. Film Holders
8. Base Stand

² Save the box and packing materials in case you need to transport this scanner in the future.

³ The scanner illustration(s) may appear different than from the actual scanner itself.

⁴ The bundled software may change at any time without prior notice.

Chapter I.

Installing Genius Scanner

Before installing your scanner, please verify that you have all of the proper components. A list of the package contents is provided in this guide.

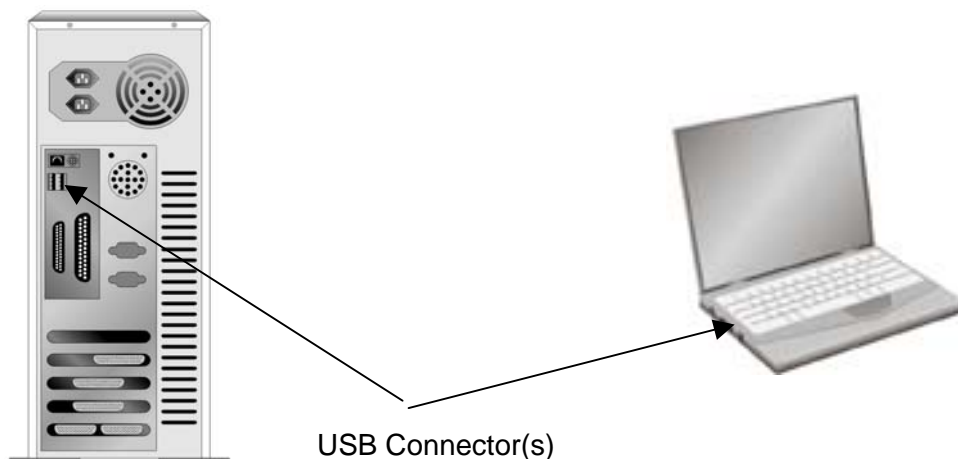
Software Requirements

Your scanner comes with the software of NewSoft Presto! ImageFolio, Abbyy FineReader, NewSoft Presto! PageManager, NewSoft Mr. Photo, Adobe Acrobat Reader, the scanner's driver, Scanner Utility, and Genius TWAIN Program. All of these software applications use approximately 160 megabytes of hard disk space after they are installed into your computer. To ensure ample room for the installation, as well as for scanning and saving images, a minimum of 260 megabytes of hard disk space is recommended.

Hardware Requirements

This scanner connects to your computer through the Universal Serial Bus (USB) which supports hot Plug and Play. To determine whether your computer is USB-capable, you must check the rear of your PC to locate a USB jack that looks the same as the one pictured below. Note that on some computers, the USB port at the rear of the computer may be occupied and additional ports may be found on the monitor or keyboard. If you are having trouble in locating the USB port on your computer, please refer to the hardware manual that came with your computer.

Upon examination, you should find one or two rectangular USB ports, which usually appear as shown below.

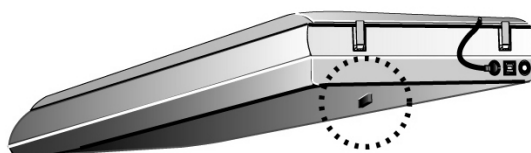


If you don't find such USB ports on your computer, then you need to purchase a certified USB interface card to add USB capabilities to your computer.

Installing and Setting up the Scanner

Step 1. Hassle-Free Lock Mechanism

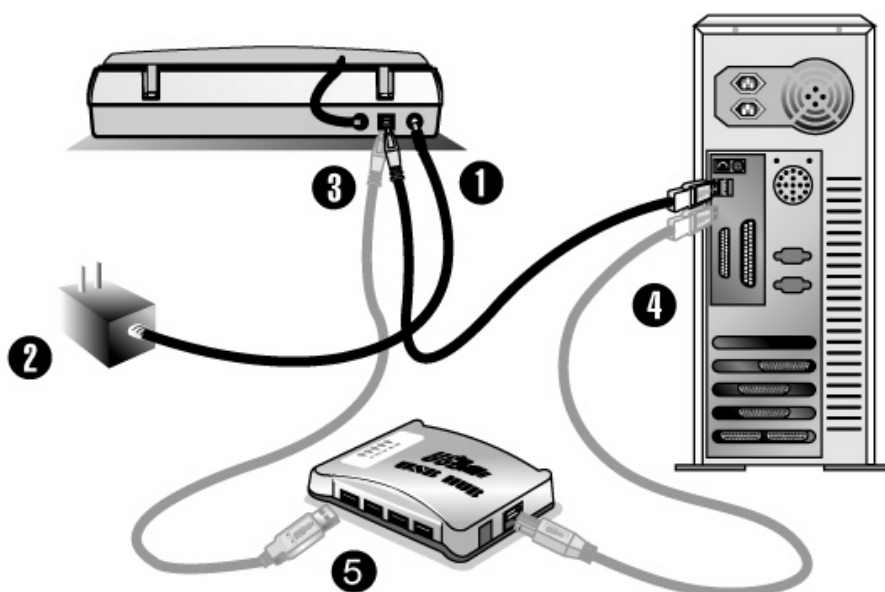
This scanner has an automatic locking mechanism to hold the scanning head in place during transportation. When the locking switch (located on the scanner's underside) is pressed, it automatically unlocks the scanning head; when not pressed, it automatically locks up the scanning head again.



Attention

- Always place your scanner on a flat and smooth surface before proceeding the scanner setup or any scanning task.
- When you need to move the scanner, do keep the locking switch NOT PRESSED to ensure accurate and problem-free use of your scanner.

Step 2. Connecting the Genius Scanner to Your Computer



1. Plug the power adapter into the scanner's power receptor.

2. Plug the other end of the power adapter into a standard AC power outlet.
3. Plug the square end of the included USB cable to the USB port of the scanner.
4. Plug the rectangular end of the USB cable to the USB port on the back of your computer.

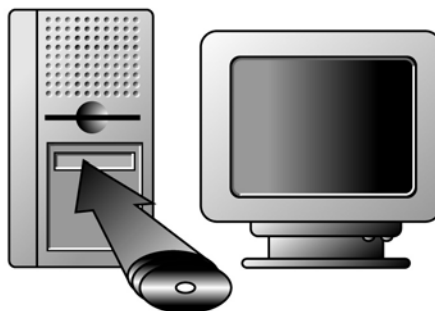
Note: If there is another USB device connected to the computer, connect the scanner to an available USB port.

5. If you plan to connect your scanner to a USB hub⁵, make sure that the hub is connected to the USB port in your computer. Next, connect the scanner to the USB hub.

Note: If you do not have a USB port available, you might need to buy a USB port.

Step 3. Installing the Software

1. If the USB components on your computer are functioning correctly, they will automatically detect the scanner causing the “Add New Hardware Wizard” or “Found New Hardware Wizard” to be launched.
2. **For Windows 98 & 2000**
 - a. Click on the [Next] button when the “Add New Hardware Wizard” window is displayed.
 - b. Select “SEARCH FOR THE BEST DRIVER FOR YOUR DEVICE [RECOMMENDED]” and click on the [Next] button.
 - c. The next window will ask you where to search to find the drive. Select [CD-ROM drive], and deselect [Floppy disk drives] if it is checked.
 - d. Insert the Setup/Application CD-ROM, included with your scanner, into your CD-ROM drive and then click on the [Next] button.



- e. Click on the [Next] button in the window that appears. Afterwards, for Windows 98 users, please skip to Step 4.
- f. **Windows 2000 users** – During the process of the installation, a message “Digital Signature required” might be prompted. Please ignore it, and click on [Yes] to continue the installation without any

⁵ The USB hub is not included with the scanner.

misgiving at your scanner functioning. Afterwards, please skip to Step 4.

3. **For Windows XP & Me**

- a. Insert the Setup/Application CD-ROM, included with your scanner, into your CD-ROM drive.
 - b. Select “INSTALL THE SOFTWARE AUTOMATICALLY [RECOMMENDED]” and click on the [Next] button.
 - c. Click on the [Next] button in the window that appears.
4. When the system completes the installation, click on the [Finish] button.
 5. Follow the on-screen instructions to install all software that your new USB scanner requires.
 6. After the software is installed, close all open applications and click on the [Finish] button to restart your computer.



Attention

- If the scanner installation is not started and displayed automatically on the screen, click START, select RUN and type in “d:install” (where d: is the drive letter assigned to the CD-ROM drive of your computer)
- If you work with Windows 2000/XP, you have to log on with an administrator user name in order to install or uninstall software.

Software Setup Troubleshooting

Carefully review the steps outlined in this guide and the Quick Installation Guide that accompanied your scanner.

If you are still having problems, please check that:

- You have 160 MB of free space on your hard disk drive.
- The scanner is plugged in and has power.
- You are using the USB cable supplied with the scanner.
- The square end of the USB cable is plugged into the rear of the scanner.
- The rectangular end of the USB cable is plugged into the back of your computer.

If you deviated from the installation procedures defined in this manual, please unplug the USB cable from the scanner and reinstall the software from the CD-ROM. To reinstall your scanner's software, click START, RUN, then type D:\Install (where D represents the letter of your CD-ROM drive). Carefully follow all the installation

instructions presented in the Setup Wizard. Reboot your computer when prompted, and plug the USB cable back into the scanner while your computer is still turned on.

If you still need support, you can contact Genius at any office listed on the last page of this guide during normal business hours in that area.

Installing Additional Software

Your scanner is TWAIN compliant and functions with virtually all available TWAIN compatible program. If you purchase additional program to be used with your scanner, please make sure that it conforms to the TWAIN standard.

Uninstalling the Scanner

Windows XP/Me/2000/98 provides an Uninstall Wizard for uninstalling your scanner software driver and application programs:

Uninstall from the “Start Menu” (Uninstall Wizard)

1. From the Windows Start menu, select Programs, and then the model name of the scanner you have installed.
2. From the drop-down menu, select Uninstall.
3. A window will pop up, asking you to confirm the deletion of the selected application and all of its components. Click OK and the UninstallShield program will run automatically and delete the scanner software driver.
4. Once completed, restart Windows.

Scanner Setup After Windows XP Upgrade

If you plan to upgrade your operating system from Windows 98 or Me to Windows XP after having installed the scanner software, please follow the instructions below:

1. Unplug the scanner's AC power adapter from the electrical outlet.
2. Unplug the scanner's USB cable from the rear of the computer.
3. From the Windows START menu, click on “Programs” and then “Genius Scanner”. In the pop-up menu that opens, click on “Uninstall Genius Scanner”. Follow the on-screen instructions to remove all the scanner software.
4. After uninstallation completes, close all open applications and click the “Finish” button to restart your computer.
5. Start installing your Windows XP upgrade software by following Microsoft's related procedures.

6. When the Windows XP upgrade is done, re-install the scanner's hardware and software. Refer to the scanner setup quick guide for details.

Chapter II. Usage and Maintenance

Operating the Scanner

Your scanner accepts documents as small as business cards and as large as letter-sized documents. However, some software programs have limitations as to the information they can handle. The capacity of the computer's memory and free space on your hard drive can also limit the physical size of the document that you scan.

There are two different ways to operate the scanner:

1. From within an image-editing program that can acquire images from the scanner.
2. By pressing either of the two action buttons on the scanner. You may configure the button settings individually to your personal needs within the Action Express program that is automatically installed as your scanner software.

Your scanner needs to be driven by some type of software program. Since all documents or images (whether text or pictures) that are acquired from the scanner are treated by your computer as images, most scanning will probably be done from an image-editing program where you can view, edit, save and output the scanned images. An image-editing program has been bundled with your scanner on the included Setup/Application CD-ROM. It will allow you to alter and correct any scanned images by using a variety of filters, tools and effects.

What about scanning text documents and editing them in a word processor? This is the role of Optical Character Recognition (OCR) software. OCR software converts the image files that are created from scanning text documents into text files that can be viewed, edited and saved by word processors. An OCR program has also been bundled on the included Setup/Application CD-ROM, and if you wish to use the scanner in this way you should install the OCR software that is included.

Action Express program is a program that allows you to conveniently scan images and text without the need to work directly within any image-editing application (i.e. Presto! ImageFolio). Action Express also includes BCR function which allows you to set scanning attributes for the business cards you are to scan to Cardiris software.

For further information about using Action Express, please refer to the Action Express on-line help.

Testing the Scanner

The following describes how you can check if the scanner is properly functioning with your computer and the scanning software by performing your first scan with our bundled image-editing application **NewSoft Presto! Image Folio**. When you get familiar with the scanning, you may alternatively use other TWAIN compatible scanning program or image-editing application to do your scanning projects. Before testing your scanner, double check to make sure that all connections are securely fastened.

To properly test your scanner, please perform the following steps:

1. Open the scanner's document cover and place a picture onto the scanner glass headfirst and face-down.



2. Gently close the document cover.
3. Click on the Windows Start button to launch NewSoft Presto! Image Folio.
4. If you have only one scanner connected with your computer, please skip to Step 5. If you have more than one scanner or other imaging device installed on your computer:

Click Select TWAIN Source from the File menu of Presto! Image Folio and then choose this scanner as the default scanning source.

5. Within Presto! Image Folio, click on File | Acquire | Acquire.
6. The Genius TWAIN interface will open.
7. Click on the Scan button.
8. If an image appears on your screen, your scanner is working properly.



If the test failed in any way, please refer to "The Scanner Utility" section of this manual and follow the instructions therein.

Attention

Using the Scanner Buttons



Your scanner is equipped with function buttons designed to make your scanning experience more convenient and efficient. There are three modes you can choose from to connect with your buttons:

Auto Mode: The EasyTouch Technology will scan the images automatically with optimal settings and send the scanned image to the post processing software. This mode offers you the most effortless scanning.

EZ Mode: If you have various scanning jobs with the same setting, this mode is recommended to achieve the efficiency. (It doesn't support this mode in Negative Scan and Positive Scan.)

Advanced Mode: If you want to control and tailor each scan closely matching your own needs, this mode with many available choices is recommended.

You can change the default Auto Mode by following the step-by-step procedure:

1. Right click the Action Express icon  on the Windows system tray
2. Choose Button Configuration from the pop-up menu.
Or , if you have opened the Action Express interface by right clicking the Action Express icon  and selecting Action Express, just click the Button Configuration button on the Action Express interface.
3. On the left hand side of Button Configuration window, select the button you want to set up.
4. Choose EZ mode or Advanced Mode.
5. Click OK or Apply.



For further information about using Action Express, please refer to the on-line help by either way:

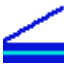
Attention

1. Clicking the Help button when you are using the program.
 2. Pointing to **Program | (your scanner model name)** from Windows Start menu, and selecting Action Express Help.
-

Defining Custom Button

The users may turn the Custom button on the scanner panel into a multifunctional assistant by defining it as other function that is included in the Action Express. Once the Custom button is defined, the selected function will be launched with one press on the button.

The following describes how to define your Custom button by using Button Manager in Action Express.

1. Right click the Action Express icon  on the Windows system tray and select [Button Manager] from the pop-up menu.
2. The Button Manager window will pop up.
3. Click the up and down arrows to select the Custom button.
4. Choose a desired function from the drop-down list of [Select the button function].
5. Click [OK] to apply the setting.
6. Once you press the Custom button on the scanner, the defined function will be launched.



Attention

The Custom button can function with the default setting “Scan”, even though you didn’t define their function by using Button Manager in advance.

Scanning the Films

Your scanner provides an easier and quicker way to scan transparent materials such as positive or negative film. With the special designed film holders supplied with your scanner, you may have a very different experience in proceeding scanning task. Read the following instructions carefully to learn how to scan the films.

Installing the Transparency Adapter

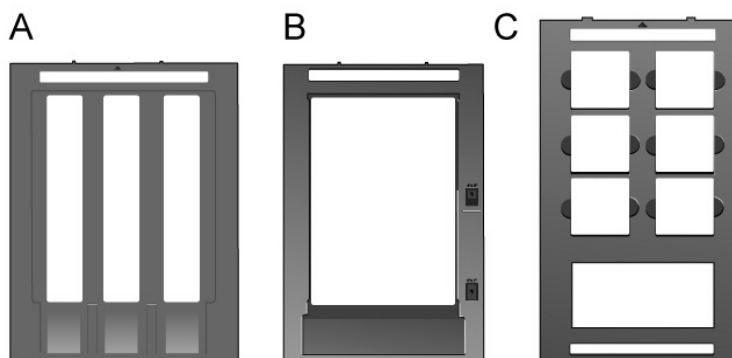
The transparency adapter is located on the underside of the scanner lid and is a necessary tool for scanning slides, filmstrips, or sheet films. Ensure the transparency adapter cable is plugged in (as illustrated) before you start scanning the films.



Film Holders

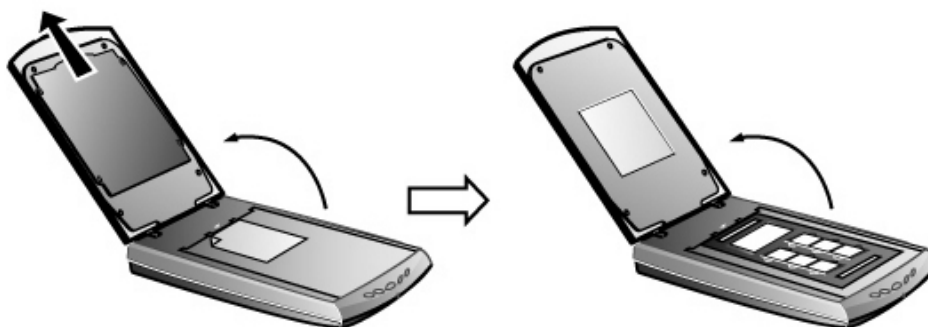
There are three types of film holders. The film holders guarantee the correct position of the films while being scanned.

- A. For scanning 35mm filmstrips (max. 12 frames)
- B. For scanning sheet films (max. 13x18 cm)
- C. For scanning 35mm slides (max. 6 slides) and 120/220 films(6x4.5 cm/ 6x6 cm/ 6x7 cm/ 6x8 cm/ 6x9 cm/ 6x12 cm)



Scanning Negative and Positive Films

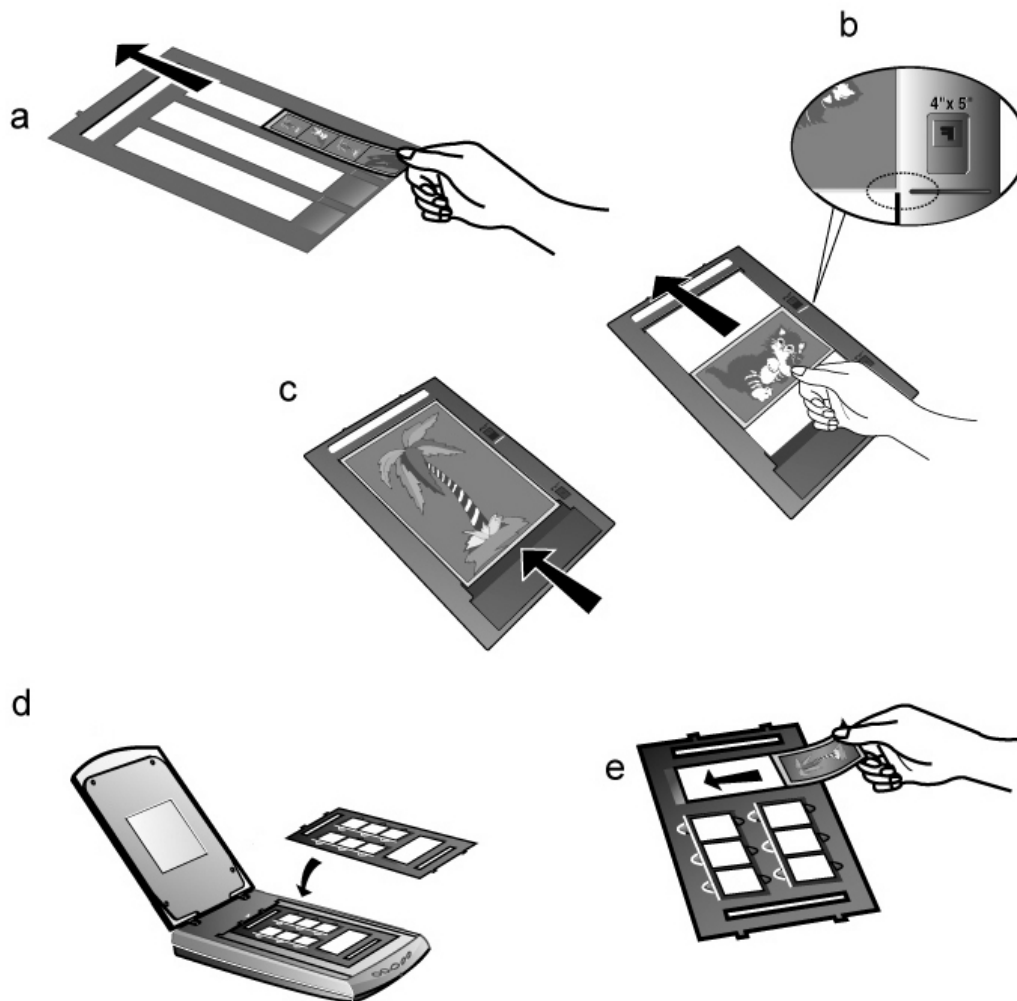
1. Remove the reflective document mat. Hold the top of the mat, and gently pull it upward until it is separated from the document cover.



2. Insert the film face down into the proper compartment on the film holder. Adjust the position of the inserted film, so that the desired image appears in the view window.

Caption

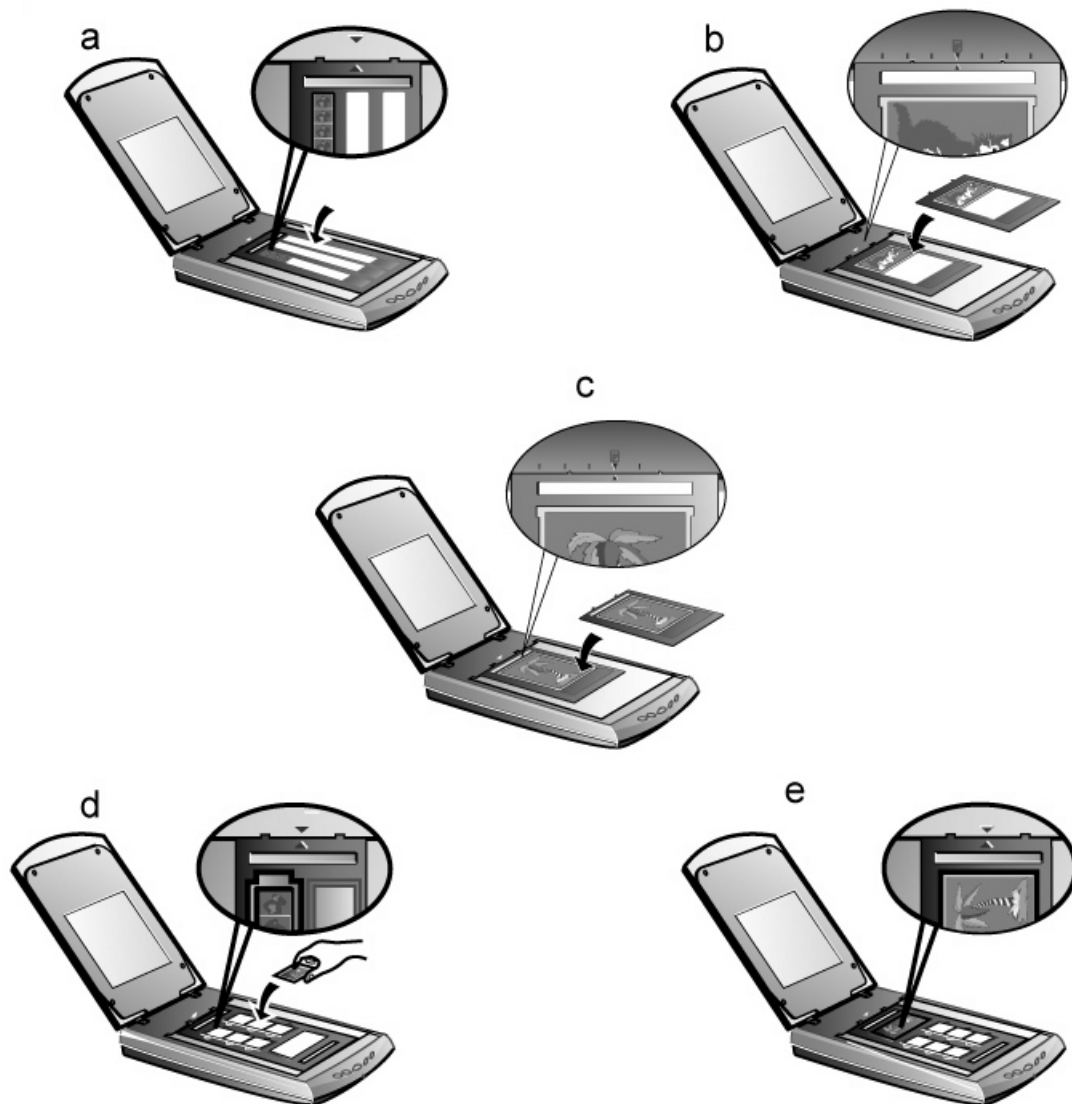
- | | |
|---------------------------------------------------------------------|-------------------------------------|
| a. Filmstrip | b. Sheet Film: 4"x5" (10.2x12.7 cm) |
| c. Sheet Film: 5"x7" (13x18 cm) | d. 35mm Slides |
| e. 120/220 Film (6x4.5 cm/ 6x6 cm/ 6x7 cm/ 6x8 cm/ 6x9 cm/ 6x12 cm) | |



Attention


- If you are scanning 35mm slides, place the film holder on the scanner first, and then place the slides in the holder.
- When inserting the 4"x5" (102x127 mm) sheet film, move the film forward within the film compartment until the opposite end of the film gets aligned with the arrow sign of the 4"x5" mark on the right side of the film holder.
- If you have only one 35mm filmstrip to scan, you can choose any of the three compartments on the film holder for filmstrips.

3. Place the film holder on the scanner glass, and align the positioning aids of the film holder to fit into the indentations of the scanner housing. The arrow sign of the particular film compartment must be in alignment with the inverse-arrow sign carved on the scanner housing.



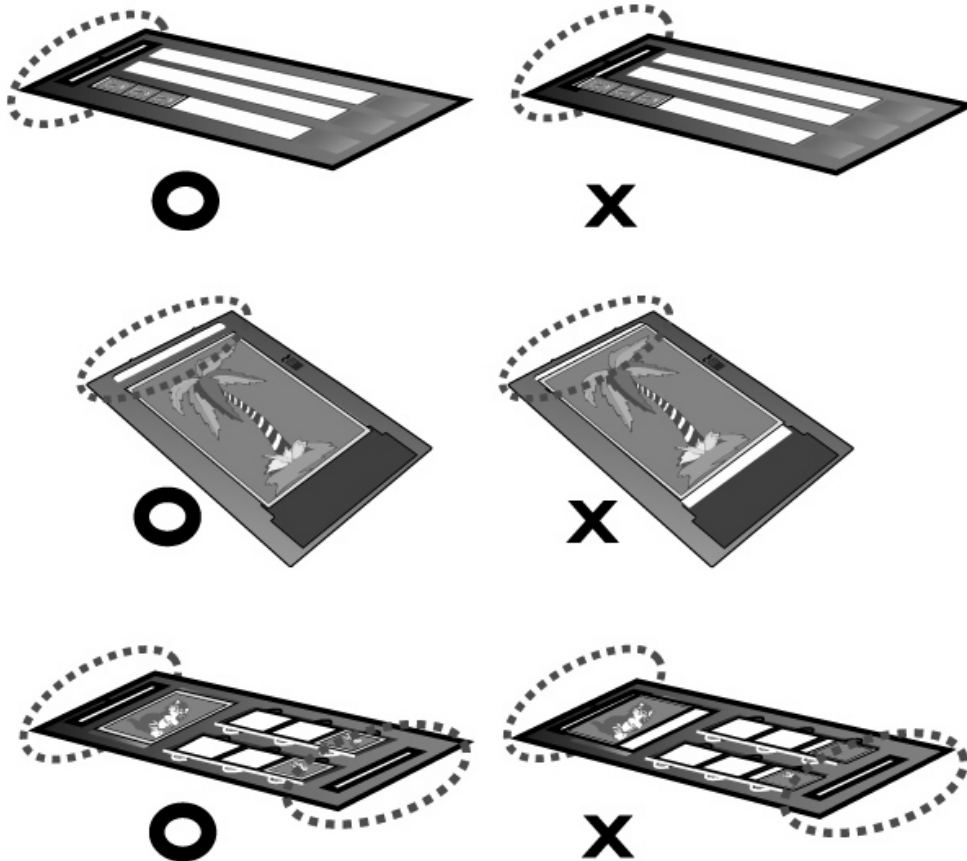
Attention

When you use the film holder to scan 35mm slides or 120/220 films, ensure to keep the side with the ready-to-be scanned film toward the inverse-arrow sign on the scanner housing.

4. Double click the Action Express icon  on the Windows system tray to launch Action Express.
5. Click the [Negative Scan] button if you're scanning negative film. Click the [Positive Scan] button if you're scanning positive film.
6. The default EasyTouch technology will scan the image automatically with optimal settings and send the scanned image to the post processing software.

Important Notes about Scanning Film

- Do not cover any small compartment below each arrow sign on the film holder because it is necessary for calibration.



- Always replace the reflective document mat onto the scanner's document cover after you finish scanning the films.
- Make sure the film is properly loaded into the film holder and the film holder is correctly positioned on the scanner glass.
- Make sure the proper SCAN SOURCE and FILM SIZE are selected before proceeding the scanning task.
- It is recommended to use a higher resolution (>1200dpi for 35mm films, 120/220 films, and large format sheet films) when you proceed the film scanning task to prevent the scan images from losing the quality while you enlarge the size of the images.

The Scanner Utility Program

The Scanner Utility Program can help you get your new scanner up and running. In addition, it contains a number of other features to help you tailor and control the scanner.


Two features of the Scanner Utility program are the scanning lamp controls and the scanning position alignment utility. The Scanner Utility allows you to turn the scanning lamp on and off, and define an idle time for the scanning lamp to automatically turn itself off. Also, it allows you to define the exact position on the scanning glass where scanning will begin. The scanner lock was designed to hold the scanning lamp in place during shipping, but some refinement of the initial scanning position may still be necessary.





Attention

The Scanner Utility program does NOT affect the quality of scanned images. It is only used to establish a connection with the scanner. Settings that affect the scanned image (i.e., color, size, readability, clarity, etc.) can be found in the scanner software programs and especially the TWAIN interface.

Scanner Connection

The first step to take when troubleshooting connection problems is to check all plug connections. The Action Express icon , located on the Windows system tray, indicates if the scanner software is properly launched, and the scanner and computer are communicating with each other.


Appearance	Status
	The Action Express program has been successfully launched and the scanner is connected with the computer, ready to scan images.
	The scanner is not connected with the computer.
No Display	You have chosen to terminate the Action Express program, no matter the scanner is connected or disconnected with the computer.

Aligning the Scanner

In most cases, the scanner doesn't need to be aligned but there are instances when the alignment might be required. You need to align the scanner only if parts of

the scanned document are missing from any of its edges. For example, the heading of a document might be missing from the top edge after the document has been scanned.


To align the scanner, follow the steps below:

1. Place a photograph on the top right side of the scanner glass (near the back of the scanner). Please note that only part of the photograph will be scanned.
2. Right click the Action Express icon  on the Windows system tray and select Scanner Utility.
3. Once the Scanner Utility window is open, click the [Start Alignment] button. Part of the photograph will be displayed in the ALIGNEMENT window.
4. Click on the arrow buttons until the top left corner of the scanned photograph aligns with the top left corner of the preview window.
5. Click on [OK] when the alignment has been completed.

Lamp Control

The scanner lamp may be turned ON and OFF manually via the Scanner Utility or the Power Save. You may also press the Power Save button on the scanner's front panel to achieve the same result. Read the following paragraphs describing how to control the scanner lamp via the Scanner Utility or the Power Save button.

Via the Scanner Utility

Right click the Action Express icon  on the Windows system tray and select Scanner Utility. In the window that opens, find the Lamp Control section.

You may set the default time for the lamp to automatically turn off after a scan by

1. Clicking the [Turn Lamp off after...] button.
 2. Clicking the up or down arrows to set up the time to turn off the scanner lamp.
- Or, you can set the lamp being always illuminated by clicking the [Always Keep Lamp on] button.

Via the Power Save button

The Power Save button enables users to turn off/on the scanner lamp immediately to conserve energy with simply one click. You can find the Power Save button from either of them:

- The Power Save button on the scanner's front panel.
- The Power Save button on the Action Express interface.

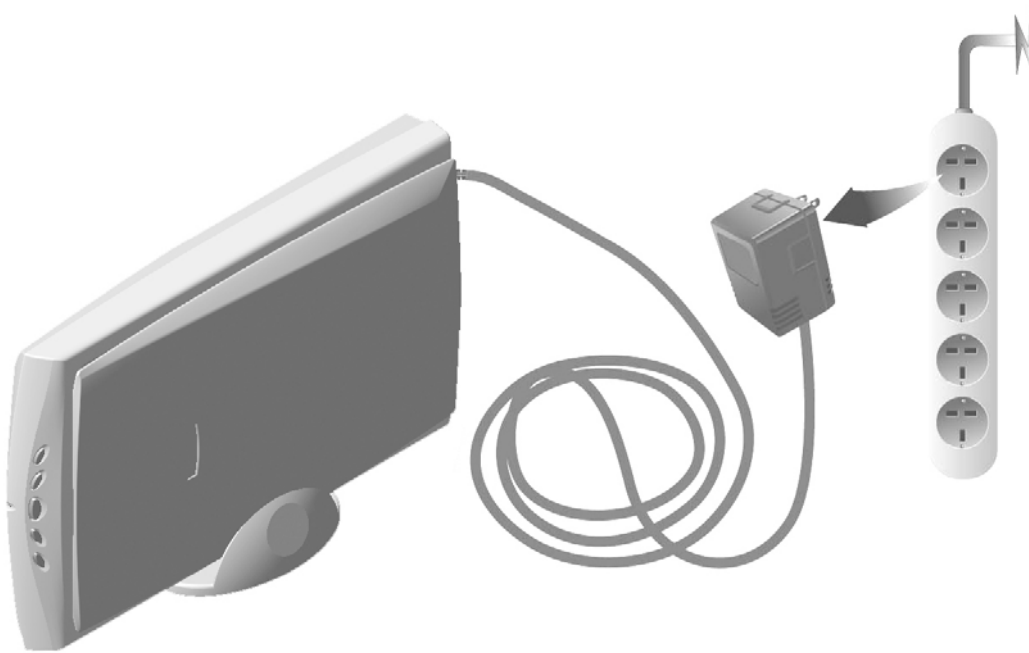
How to turn OFF the scanner lamp

- Press the Power Save button to turn off the lamp.

How to turn ON the scanner lamp

- Press any function button on the scanner.

Base Stand



If you will not use the scanner for a while, you may alternatively use the base stand found in the scanner package to store it upright (as illustrated above) and thus save your desk space. For safety and enduring product usage, always follow these precautions:

- Do UNPLUG the AC power adapter from the electrical outlet.
- Do place the base stand and the scanner on STABLE surfaces to prevent them from falling.

When you want to use the scanner again,

- Make sure all cables are well connected to your scanner and computer. Refer to the scanner setup quick guide for details.
- Activate the Action Express program from your scanner's program folder via the Windows START menu.

Maintenance

To keep your scanner working smoothly, take a moment to review the following maintenance tips.

- Avoid using the scanner in a dusty environment. When it is not in use, keep the scanner covered. Dust particles and other foreign objects may damage the unit. If you will not use the scanner for some time, please place it in the travel pouch.
- Do not attempt to disassemble the scanner. There is danger of an electrical shock and opening your scanner will void your warranty.
- Do not subject the scanner to excessive vibration. It may damage the internal components.
- Be sure not to bump or knock the scanner glass as it is fragile and could break.
- Clean the scanner glass by lightly spraying a non-abrasive glass cleaner onto a soft lint-free cloth. Then, wipe the glass thoroughly with the cloth. **DO NOT SPRAY CLEANER DIRECTLY ONTO THE SCANNER GLASS.** Excess liquid residue may fog or damage the scanner.
- Your scanner operates best in temperatures between 10° C to 40° C (50° F to 104° F).

Appendix A: Specifications

Genius ColorPage-HR3200	
Physical dimensions	435mm x 265mm x 73mm
Weight	2.7Kgs (5.95 Lbs)
Operating Temperature	10° C to 40° C (50° F to 104° F)
Scan Area	Reflective : Maximum 216 mm x 297 mm (8.5" x 11.69") Transparency : Negatives and positives of 35mm (up to 4 frames x 3 strips or 6 slides), 120/220 format (up to 6x12 cm), 4"x5", 5"x7"
Scan Method	Single -Pass
Scan Modes	48 bit Color 16 bit Grayscale 1 bit Line-Art (Black & White)
Resolution	Optical 3200 dpi (24000 dpi software interpolated)
Scanning Materials	Reflective color or black-and-white originals, 35 mm slides, 35mm filmstrip, 120/220 film (max. 6x12 cm), sheet films (max. 13x18 cm)
Protocols	TWAIN Compliant
Connection	USB 2.0 High Speed
Light Source	Cold Cathode Lamp
Power Requirement	Power Output DC 15V, 1.0A (Load)
Power Consumption	Operation: 15 watts maximum Idle: 5 watts
EMI	FCC Class B

Appendix B: Customer Service and Warranty

If you encounter problems with your scanner, please review the installation instructions and troubleshooting suggestions contained in this guide.

For further assistance call our customer support phone number listed on the last page of this guide. To avoid any delay, please have the following information available before calling:

- Scanner name and model number
- Scanner serial number (located at rear of scanner near port connectors)
- A detailed description of the problem
- Your computer manufacturer and its model number
- The speed of your CPU (Pentium 133, etc.)
- Your current operating system and BIOS (optional)
- Name of program package(s), version or release number and manufacturer of the program
- Other USB devices installed

We are continuously enhancing the performance of our product drivers. To check for the updated device driver you may visit our Web Site. (Please refer to the section of "Contacting Genius" on the last page of this manual.)

Statement of Limited Warranty

This Statement of Limited Warranty applies only to the options you originally purchase for your use, and not for resale, from an authorized reseller.

If you transfer this product to another user, warranty service is available to that user for the remainder of the warranty period. You should give your proof of purchase to that user.

We warrant that this machine will be in good working order and will conform to its functional descriptions in the documentation provided. Upon provision of proof of purchase, replacement parts assume the remaining warranty of the parts they replace.

Before presenting this product for warranty service, you must remove all programs, data and removable storage media. Products returned without program will be replaced without program.

This Limited Warranty service does not provide for carry-in exchange when the problem results from accident, disaster, vandalism, misuse, abuse, unsuitable environment, program modification, Electro Static Discharge (ESD) damage, another machine or non-vendor modification for this product.

If this product is an optional feature, this Limited Warranty applies only when the feature is used in a machine for which it was designed.

If you have any questions about your Limited Warranty, contact Genius.

THIS LIMITED WARRANTY REPLACES ALL OTHER WARRANTIES, EXPRESS OR IMPLIED, INCLUDING, BUT NOT LIMITED TO, THE IMPLIED WARRANTIES OF MERCHANTABILITY AND FITNESS FOR A PARTICULAR PURPOSE. HOWEVER, SOME LAWS DO NOT ALLOW THE EXCLUSION OF IMPLIED WARRANTIES. IF THESE LAWS APPLY, THEN ALL EXPRESS AND IMPLIED WARRANTIES ARE LIMITED IN DURATION TO THE WARRANTY PERIOD. NO OTHER WARRANTIES APPLY AFTER THAT PERIOD.

Some jurisdictions do not allow limitations on how long an implied warranty lasts, so the above limitation may not apply.

Under no circumstances are we liable for any of the following:

1. Third party claims against you for losses or damages.
2. Loss of, or damage to, your records or data; or
3. Economic consequential damages (including lost profits or savings) or incidental damages, even if we are informed of their possibility.

Some jurisdictions do not allow the exclusion or limitations of incidental or consequential damages, so the above limitation or exclusion may not apply to you.

This Limited Warranty gives you specific legal rights, and you may also have other rights that vary from jurisdiction to jurisdiction.

FCC Radio Frequency Statement

This equipment has been tested and found to comply with the limits for a Class B digital device, pursuant to part 15 of the FCC rules. These limits are designed to provide reasonable protection against harmful interference in a residential installation.

This equipment generates, uses and can radiate radio frequency energy and, if not installed and used in accordance with the instructions, may cause harmful interference to radio communications. However, there is no guarantee that interference will not occur in a particular television reception (which can be determined by turning the equipment off and on), the user is encouraged to try to correct the interference by one or more of the following measures:

- √ Reorient or relocate the receiving antenna.
- √ Increase the separation between the equipment and receiver.

- √ Connect the equipment to an outlet on a circuit different from that which the receiver is connected.
- √ Shielded interconnect cables and shielded power cord which are supplied with this equipment must be employed with this equipment to ensure compliance with the pertinent RF emission limits governing this device.
- √ Consult the dealer or an experienced radio/TV technician for help if the conditions persist.
- √ Changes or modifications not expressly approved by the manufacturer or authorized service center could void the users authority to operate this equipment.

Contacting Genius

USA & Canada

KYE Systems America Corporation
Latin America
1301 N. W. 84th Avenue, Suite#127,
Miami, Florida 33126 U. S. A.
Tel : 1-305-468-9250
Fax : 1-305-468-9251
Web Site: <http://www.genius-kye.com>

Europe

KYE Systems Europe GmbH
Karl Benz Str. 9
D-40764 Langenfeld, Germany
Tel : (49) 21 73 9743-44
Fax : (49) 21 73-9743-17
Web Site: <http://www.genius-europe.com>

Europe

KYE Systems UK Ltd.
Unit 4, 131 Beddington Lane,
Croydon, Surrey. CR0 4TD, UK
Tel : (44) 208 664 2727 (sales)
(44) 208 664 2739 (Tech. Support)
Fax : (44) 208 664 2721(sales)
(44) 208 664 2740(Tech. Support)
Web Site: <http://www.kye.co.uk>

Asia Pacific

KYE Systems H.K. Corp. Ltd.
Unit 01, 17th Floor, Aitken Vanson
Centre, No.61 Hoi Yuen Road, Kwun
Tong, Kowloon, Hong Kong
Tel : (852)2342 3813
Fax : (852)2341 9517
Web Site: <http://www.geniusnet.com.hk>

Asia Pacific

KYE Systems Corp.
No.492, Sec. 5, Chung Hsin Rd., San
Chung, Taipei Hsien, 241, Taiwan
Tel : (886) 2 2995-6645
Fax : (886) 2 2995-6649
Web site: <http://www.geniusnet.com.tw>

Asia Pacific

KYE Systems (M) SDN BHD
NO. 2, Jalan BK 1/12, Kinrara Industrial
Park
Bandar Kinrara, 6 1/2 Miles, Jalan
Puchong,
58200 Kuala Lumpur, Malaysia
Tel : (603) 575 1355
Fax : (603) 575 6362 / 6962
Email: sales-kye@kye-systems.com.my