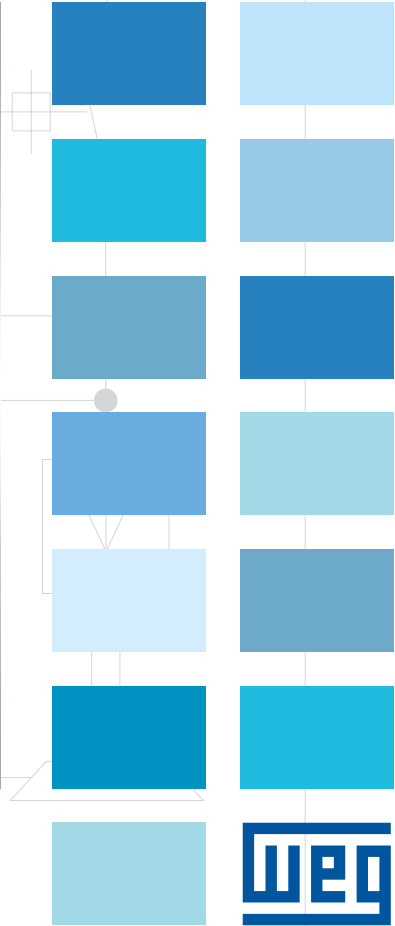
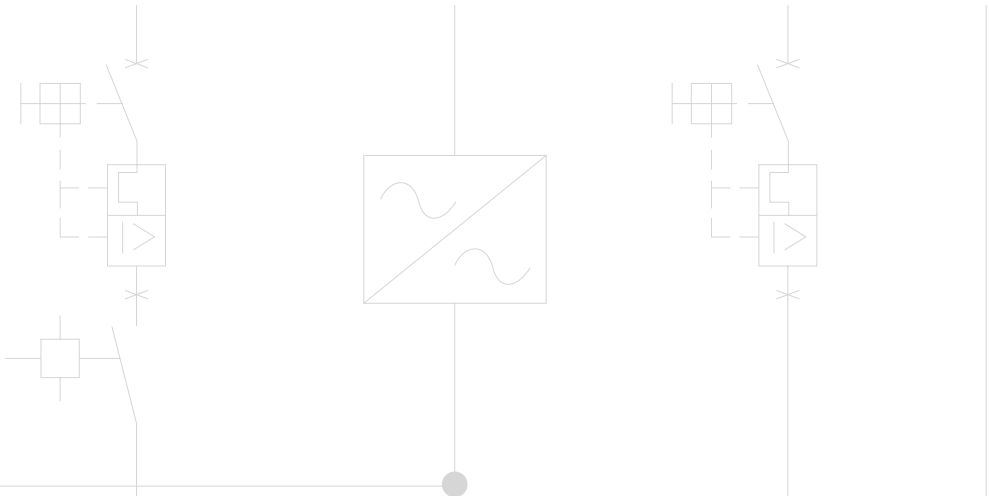


CFW500 Machinery Drives

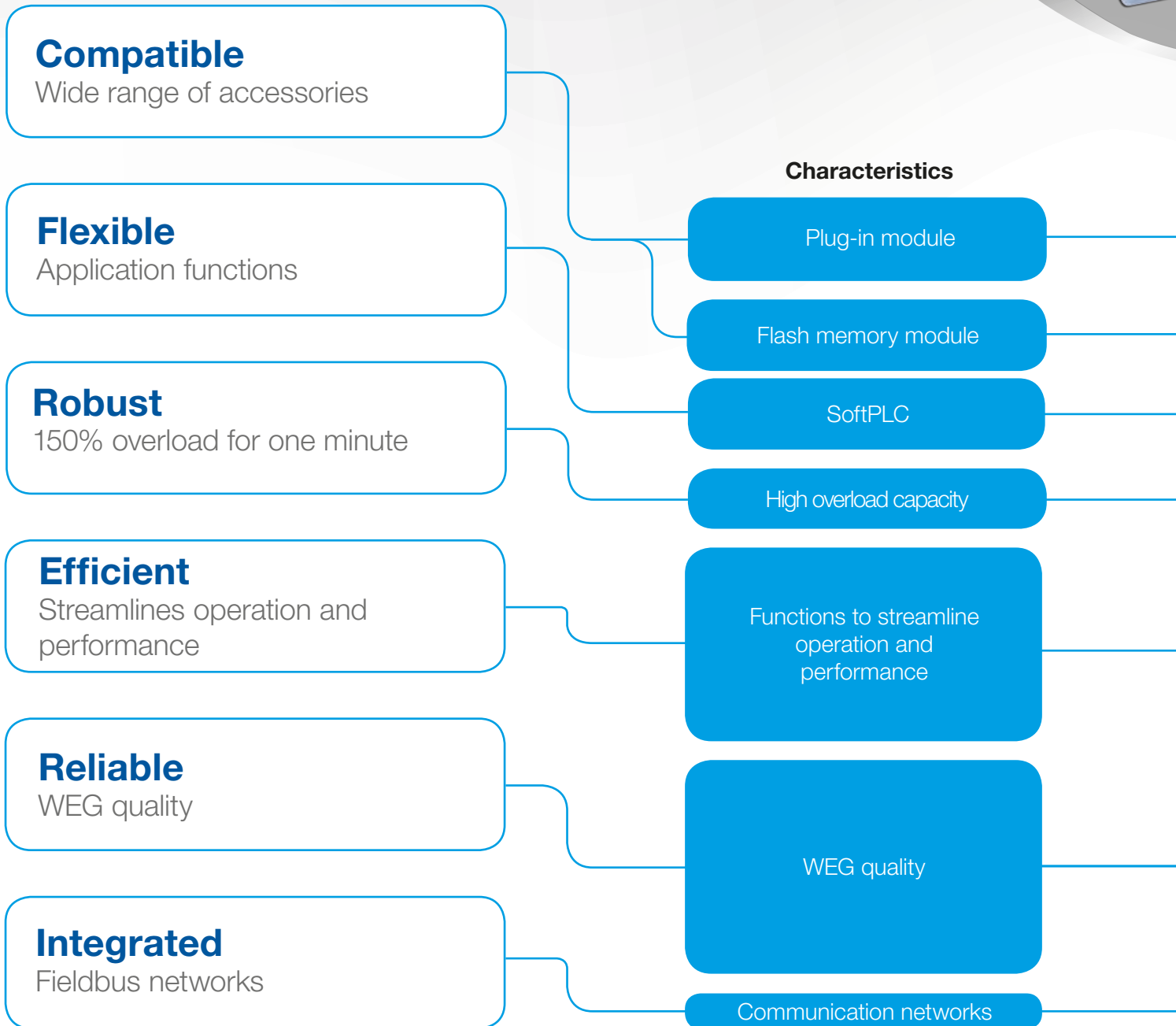
Variable Speed Drives

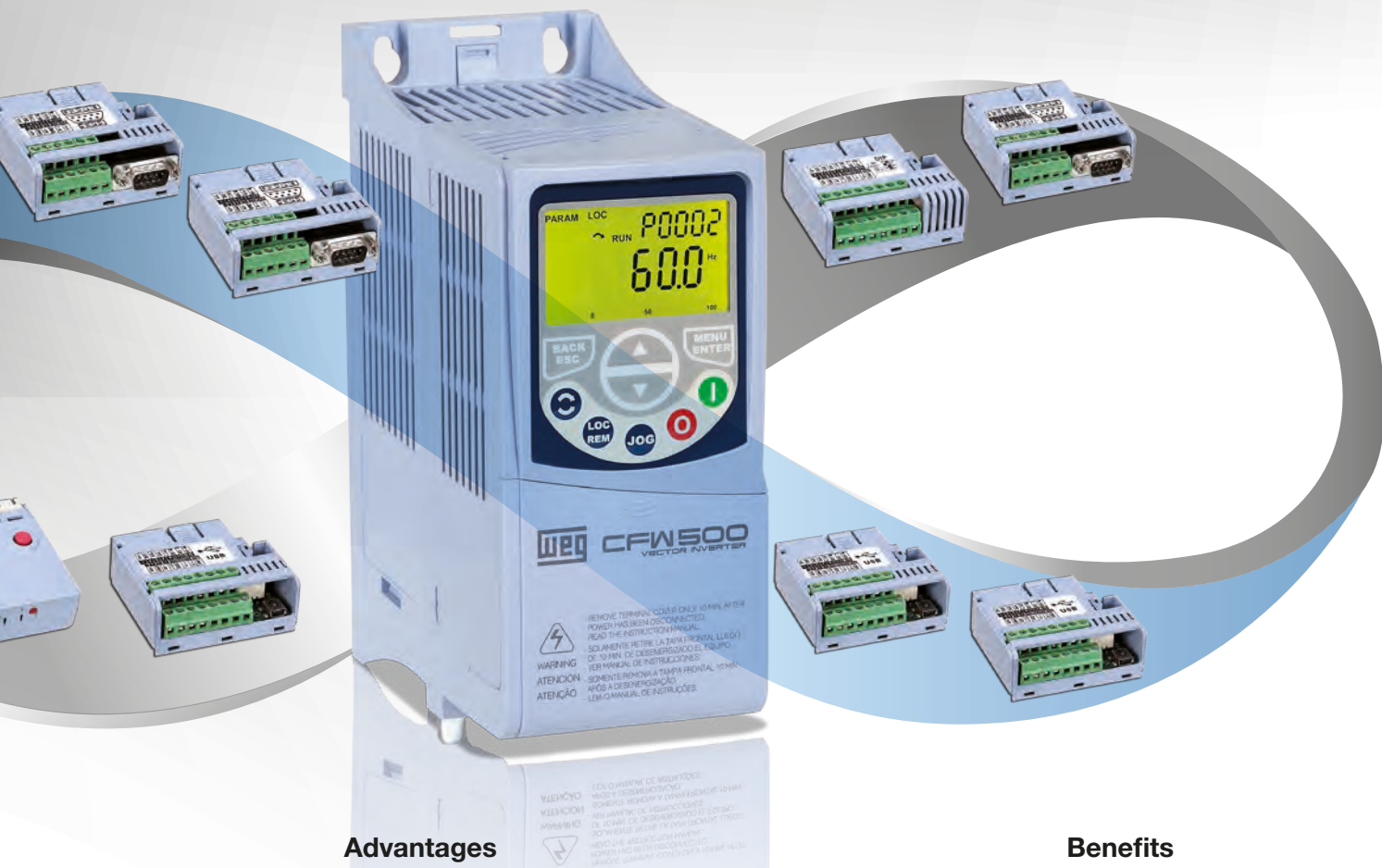


CFW500

One VSD, endless possibilities

The CFW500 has advanced technology Plug & Play options, developed for fast commissioning, providing great flexibility and competitive advantage while offering excellent performance and reliability. Designed for exclusively industrial or professional use, is perfect for OEM, system integrators, panel installers and End Users providing great benefit and added value.





Advantages

Benefits

The optional communication network and I/O modules are fast and easily installed, allowing adaptation of the standard VSD to each application.

Within seconds, it is possible to download the SoftPLC program and parameters set from a CFW500 to others without powering them up.

Built-in PLC (SoftPLC), enabling the VSD, motor and application to work in an interactive way. It allows the user to implement customized logic and applications.

It withstands an overload of 150% for one minute every 6 minutes, at an ambient temperature of 50 °C.

PID: process control.
Sleep: disables the VSD automatically.

Flying start: allows control of a motor that is turning freely, accelerating it from the speed at which it was running.

Ride through: keeps the VSD in operation during voltage dips.

100% of the VSDs are tested with load at the factory under rated conditions.

Protection against ground fault, short circuit, over temperature and others.

Thermal protection of IGBTs based on manufacturer curve.

Conformal Coating (Tropicalization) as Standard. Classified as 3C2 according to IEC 60721-3-3.

CANopen, DeviceNet, Profibus-DP and Modbus-RTU.

Time saving, standardization and optimized costs according to the needs.

Fast, easy and reliable programming for manufacturers that produce machines in large quantities.

It eliminates the need for an external PLC, reducing costs, optimizing space and simplifying the system.

It does not require oversizing the VSD.

Energy saving.

It enables fast operating response of the machine and prevents occasional mechanical breakdowns.

It prevents machine stoppage and downtime.

High reliability.

It prevents damage to the inverter which can be caused by adverse situations, normally external factors.

VSD lifespan is extended: protection against dust, humidity, high temperatures and chemicals.

Full integration with process network.

Easy Configuration



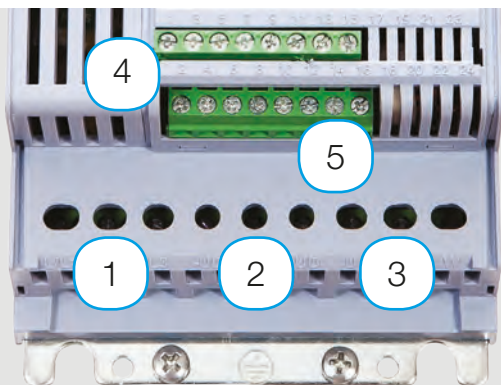
- Fast commissioning
- Innovative design, compact and uniform
- Optimised cost x benefit



Plug-in Modules
Connections and interfaces for flexibility.

Fan
Simple and fast removal.

Conformal Coating (Tropicalization) as Standard
Increasing the lifetime, protecting the electronic boards against corrosive atmospheres. Classified as 3C2 according to IEC 60721-3-3.



With plug-in module CFW500-IOS

- 1 - Power terminals
- 2 - Access to DC link
- 3 - Motor terminals
- 4 - Control terminals (I/Os)
- 5 - RS485 port



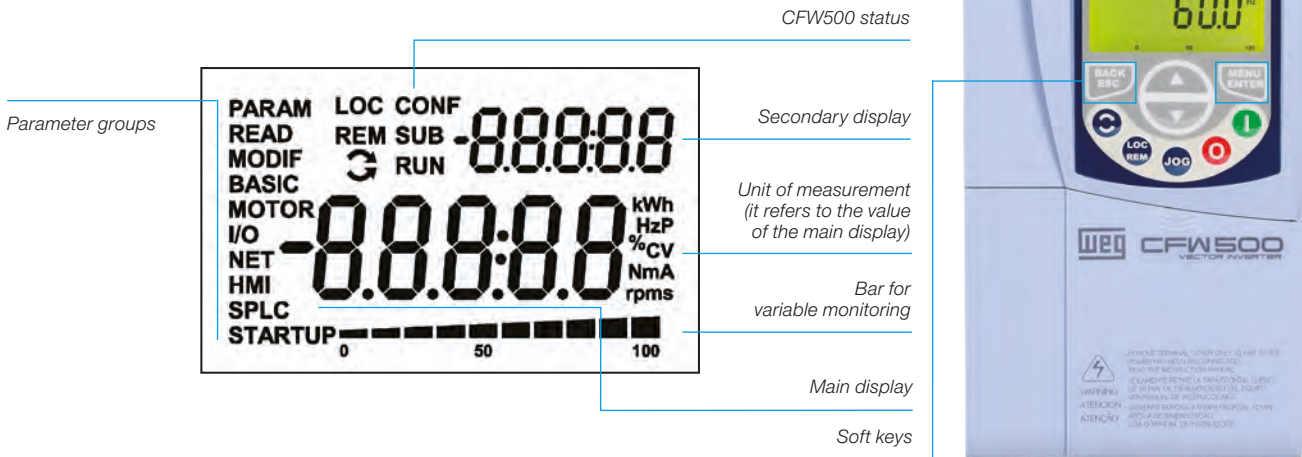
Applications

- Centrifugal pumps
- Process dosing pumps
- Fans / exhausters
- Mixers
- Compressors
- Conveyor belts
- Roller tables
- Granulators / palletizers
- Dryers
- Rotary filters



Human-Machine Interface

- View three selected parameters at the same time



Friendly Programming

- Oriented start-up: programming step by step
- Easy and intuitive operation, fast access to the parameters
- Parameter group: it directs to the parameters of interest

Remote HMI

Solution for panel door or machine console.



Energy Efficiency

In industry, electric motors are responsible for nearly 70% of all the electric energy consumed. Using a VSD it is possible to reduce consumption by up to 40%.

Besides being efficient in the control of electric motors, they also reduce machine wear, save raw materials, improve process quality and increase productivity.

Visit the WEG website to calculate how much energy can be saved by using the CFW500 VSD.

Ensures energy efficiency for your equipment and machines. Save money and contribute to the conservation of the environment.



Certifications



SuperDrive G2

Software application for programming, control and monitoring of WEG VSD. For connect to a computer should have a plug-in.



Trend Function

- On-line graphic monitoring of parameters/variables
- Possibility to export an image with the respective graph based upon the selected period

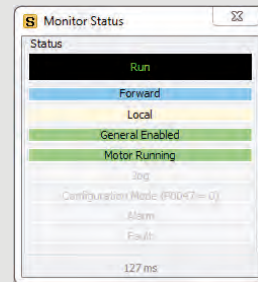
Changing and Monitoring of Parameters in a List/Table

Parameter settings can be stored in a computer file format.

Number	Function	Minimum	Maximum	Factory Setting	User Setting	Unit
0	Access to Parameters	0	9999	0	0	
1	Speed Reference	0	65535	0	30	
2	Motor Speed	0	65535	0	30	
3	Motor Current	0	200	0	0.1	A
4	DC Link Voltage (Vd)	0	2000	0	311	V
5	Motor Frequency	0	500	0	2.5	Hz
6	VFD Status	0	7	0: Ready	1: Run	
7	Motor Voltage	0	2000	0	23	V
9	Motor Torque	-1000	1000	0	-5.2	%
11	Motor Current	-1	1	0	0.75	
12	DI8 to DI1 Status	00000000b	11111111b	00000000b	00000000b	
13	DO5 to DO1 Status	00000000b	01111111b	00000000b	00000011b	
14	AO1 Value	0	100	0	4.3	%
15	AO2 Value	0	100	0	1.4	%
16	FO % Value	0	100	0	0	%
17	FO Hz Value	0	20000	0	0	Hz
18	AI1 Value	-100	100	0	0	%
19	AI2 Value	-100	100	0	0	%
20	AI3 Value	-100	100	0	-100	%
21	FI % Value	-100	100	0	0	%
22	FI Hz Value	0	20000	0	0	Hz
23	Main SW Version	0	655.35	0	1.14	
24	Sec. SW Version	0	655.35	1.11	1	
27	Plug-In Mod. Config.	00000000b	00001001b	00000000b	00000011b	
29	Power HW Config.	00000000b	00111111b	00000000b	00000011b	
30	Heatsink Temperature	-20	150	0	25	°C
37	Motor Overload Lxt	0	100	0	0	%
40	PID Process Variable	0	3000	0	0	
41	PID Setpoint Value	0	3000	0	0	
47	CONF State	0	999	0	0	
48	Present Alarm	0	999	0	0	
49	Present Fault	0	999	0	0	
50	Last Fault	0	999	0	0	
51	Current At Last Fault	0	200	0	0	A
52	DC Link At Last Fault	0	2000	0	0	V
53	Speed At Last Fault	0	500	0	0	Hz

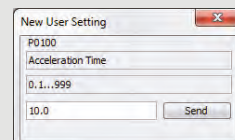
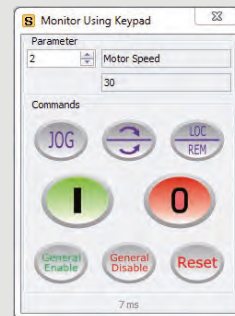
- Upload/download parameters from the PC to the CFW500 and vice versa
- Off-line editing of the parameters stored on the PC

Status Monitoring



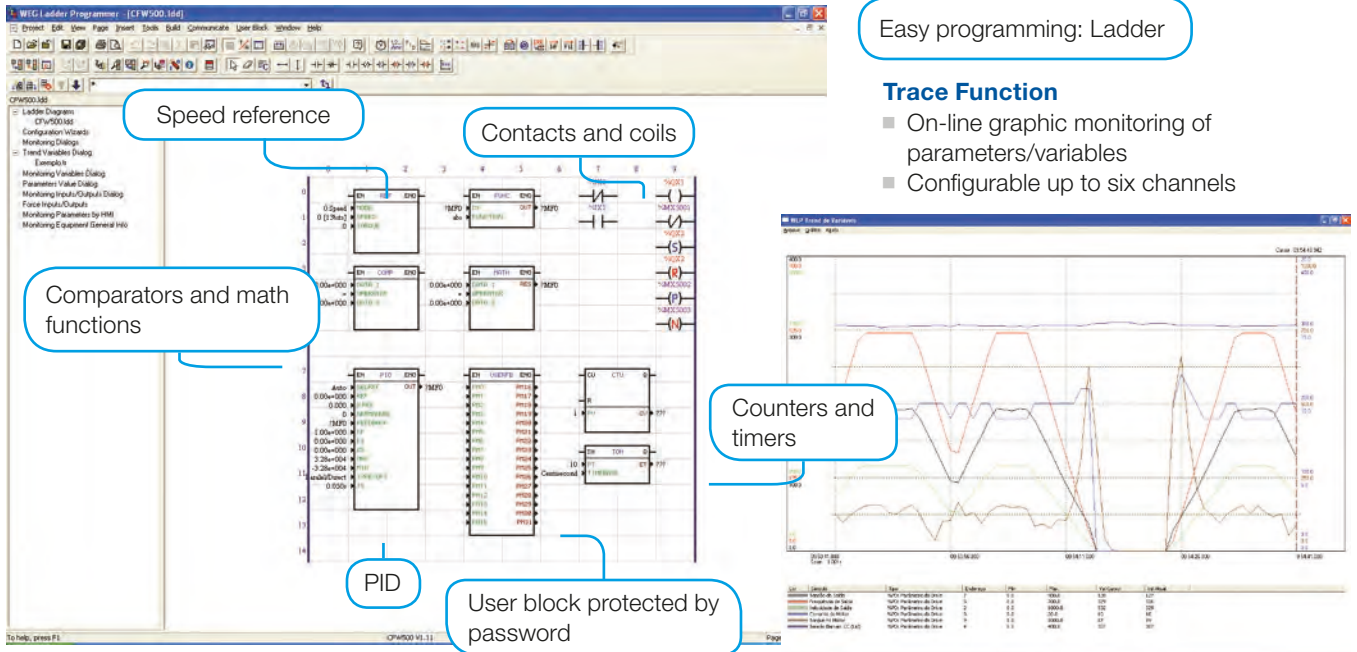
Operation with HMI

On-line parameter editing.



SoftPLC - Built-in on the Standard Product

Functionalities of a PLC available as standard, allowing the creation of applications. The WLP software and the SoftPLC functionality are a smart and simple way to make your CFW500, motor and application work together. For connect to a computer should have a plug-in.



Easy programming: Ladder

Trace Function

- On-line graphic monitoring of parameters/variables
- Configurable up to six channels

Speed reference

Contacts and coils

Comparators and math functions

PID

User block protected by password

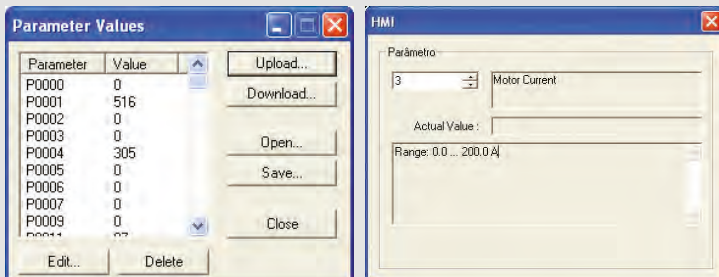
Counters and timers

On-line Monitoring Parameters/Variables List

Symbol	Type	Address	Value	
Motor Current	%PD: Drive Parameter	3	9	Insert
Motor Frequency	%PD: Drive Parameter	5	511	
Motor Voltage	%PD: Drive Parameter	7	188	Edit
DC Link Voltage (Ud)	%PD: Drive Parameter	4	301	
Analog Input AI1	%IW: Analog Input	1	32193	Write
Digital Input DI1	%IX: Digital Input	1	0	Delete
				Up Down
				Signed

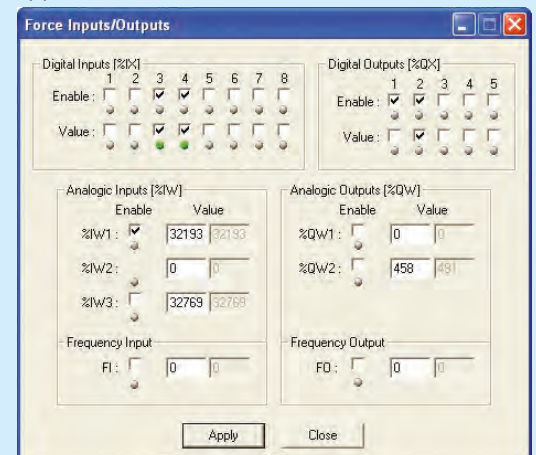
Parameter Edition

For changing the parameters values.



Enable/Disable I/Os

It simplifies and speeds up the validation of the application.



I/Os Monitoring



Coding

The CFW500 code identifies its construction characteristics, nominal current, voltage range and optionals. Using the smart code, it is possible to select the CFW500 required for your application simple and quickly.

Product and series	Model identification				Braking ¹⁾	Degree of protection ¹⁾	Conducted emission level ¹⁾	Hardware version	Software version
	Frame size	Rated current	N° of phases	Rated voltage					
CFW500	A	02P6	T	4	NB	20	C2	H00	---
CFW500	Check table below								
	NB = without dynamic braking DB = with dynamic braking								
	20 = IP20 N1 = NEMA1 enclosure								
	Blank = with no RFI filter C2 = according to category 2 of IEC 61800-3 standard, with internal RFI filter C3 = according to category 3 of IEC 61800-3 standard, with internal RFI filter								
	H00 = without plug-in module								
	Blank = standard Sx = special software								

Frame sizes	Output current	Input	Power supply voltage	Braking	Degree of protection	Conducted emission level ²⁾					
A	01P6 = 1.6 A	S = single phase power supply	2 = 200... 240 V	NB	20 or N1	Blank or C2					
	02P6 = 2.6 A						Blank or C3				
	04P3 = 4.3 A					C2					
	07P0 = 7.0 A										
B	07P3 = 7.3 A	S or T = single-phase or three-phase power supply		NB		DB	Blank				
	10P0 = 10 A										
A	01P6 = 1.6 A	S or T = single-phase or three-phase power supply		DB		NB		Blank			
	02P6 = 2.6 A										
B	04P3 = 4.3 A	T = three-phase power supply		DB		NB			Blank or C3		
	07P3 = 7.3 A										
A	07P0 = 7.0 A	T = three-phase power supply		DB		DB				Blank or C2	
	09P6 = 9.6 A										
B	16P0 = 16 A	T = three-phase power supply	DB	DB	Blank or C2						
	24P0 = 24 A										
C	28P0 = 28 A	T = three-phase power supply	DB	DB		Blank or C3					
	33P0 = 33 A										
D	47P0 = 47 A	T = three-phase power supply	DB	DB			Blank or C3				
	01P0 = 1.0 A										
A	01P6 = 1.6 A	T = three-phase power supply	4 = 380...480 V	NB				20 or N1			Blank or C2
	02P6 = 2.6 A										
	04P3 = 4.3 A								Blank or C2		
	06P1 = 6.1 A										Blank or C3
B	02P7 = 2.7 A			T = three-phase power supply					DB	DB	
	04P3 = 4.3 A										Blank or C3
	06P5 = 6.5 A				Blank or C2						
	10P0 = 10 A										Blank or C3
C	14P0 = 14 A			T = three-phase power supply	DB	DB			Blank or C3		
	16P0 = 16 A										
D ³⁾	24P0 = 24 A			T = three-phase power supply	DB	DB	Blank or C3				
	31P0 = 31 A										

Notes: 1) To know which models have these options in the standard product the table below should be checked.

2) RFI filter.

Categories:

- Category C1: inverters with voltages below 1,000 V, for use in the First Environment.

- Category C2: inverters with voltages below 1,000 V, with plugs or mobile installation, when used in the "First Environment", must be installed and started-up by a qualified professional.

- Category C3: inverters with voltages below 1,000 V, developed for use in the Second Environment and not designed for use in the "First Environment".

Environments:

- First Environment: environments that include household installations, such as buildings directly connected, without intermediate transformer, to a low-voltage power supply grid, which supplies buildings used for domestic purposes.

- Second Environment: includes all the buildings other than those directly connected to a low-voltage power supply grid, which supplies buildings used for domestic purposes.

For the RFI filters of external installations, refer to the CFW500 user manual.

3) Coming soon.

Drive Ratings

The correct way to select a VSD is matching its output current with the motor rated current. The tables below present the expected motor power for each VSD model. Use the motor power ratings below only as a guidance. Motor rated currents may vary with speed and manufacturer. IEC motor powers are based on WEG 4-pole motors; NEMA motor powers are based on NEC table 430-150.

Motor Voltages Between 220 V and 230 V

Power supply	Model	Rated current A	IEC		NEMA	
			50 Hz 230 V	60 Hz 220 V	60 Hz 230 V	
200-240 V	10	CFW500 A 01P6 S2	1.6	0.25	0.25	0.33
		CFW500 A 02P6 S2	2.6	0.55	0.5	0.5
		CFW500 A 04P3 S2	4.3	1.1	1	1
		CFW500 A 07P0 S2	7	1.5	2	2
	1/30	CFW500 A 01P6 B2	1.6	0.25	0.25	0.33
		CFW500 A 02P6 B2	2.6	0.55	0.5	0.5
		CFW500 A 04P3 B2	4.3	1.1	1	1
		CFW500 B 07P3 B2	7.3	1.5	2	2
	30	CFW500 B 10P0 B2	10	2.2	3	3
		CFW500 A 07P0 T2	7	1.5	2	2
		CFW500 A 09P6 T2	9.6	2.2	3	3
		CFW500 B 16P0 T2	16	4	5	5
		CFW500 C 24P0 T2	24	5.5	7.5	7.5
		CFW500 D 28P0 T2 ¹⁾	28	7.5	10	10
		CFW500 D 33P0 T2 ¹⁾	33	9.2	12.5	10
		CFW500 D 47P0 T2 ¹⁾	47	11	15	15

Note: 1) Coming soon.

Motor Voltages Between 380 V and 480 V

Power supply	Model	Rated current A	IEC		NEMA	
			50 Hz 415 V	60 Hz 460 V	60 Hz 460 V	
380-480 V	30	CFW500 A 01P0 T4	1	0.25	0.5	0.33
		CFW500 A 01P6 T4	1.6	0.75	1	0.75
		CFW500 A 02P6 T4	2.6	1.1	1.5	1
		CFW500 A 04P3 T4	4.3	1.5	3	2
		CFW500 A 06P1 T4	6.1	3	4	3
		CFW500 B 02P6 T4	2.6	1.1	1.5	1
		CFW500 B 04P3 T4	4.3	1.5	3	2
		CFW500 B 06P5 T4	6.5	3	4	3
		CFW500 B 10P0 T4	10	4	7.5	7.5
		CFW500 C 14P0 T4	14	7.5	10	10
		CFW500 C 16P0 T4	16	7.5	12.5	10
		CFW500 D 24P0 T4 ¹⁾	24	11	15	15
		CFW500 D 31P0 T4 ¹⁾	31	15	25	25

Note: 1) Coming soon.

Dimensions and Weights

IP20

Frame size	H mm	W mm	D mm	Weight Kg
A	189.1	75.2	149.5	0.8
B	199.1	100.2	160.1	1.2
C	210	135.2	165.1	2
D ¹⁾	306.6	180	166.5	4.3

Note: 1) Coming soon.

NEMA1

Frame size	H mm	W mm	D mm	Weight Kg
A	22.3	75.2	149.5	1.05
B	243.3	100.2	160.1	1.49
C	254.8	135.2	165.1	2.35
D ¹⁾	362	180	166.5	4.8

Note: 1) Coming soon.



Accessories and Optionals

The CFW500 VSD was developed to meet the hardware configurations required by a wide range of applications. The table below presents the available options:

Option	Type ¹⁾	Description	Optional item code ²⁾	Accessory model	Available
RFI filter	Optional	Used to reduce the disturbance conducted from the CFW500 to the power supply, in the high frequency band (>150 kHz), according to standards 61800-3 and EN 55011.	C2 or C3	-	Factory installation only
Braking IGBT	Optional	Used in high-inertia applications for the fast stop of the motor by means of an external braking resistance. Resistance not included. For the calculation of the braking resistance, refer to the CFW500 user manual.	DB	-	Factory installation only
Degree of protection NEMA1	Optional or accessory	Used for the CFW500 VSD to have degree of protection NEMA1 and/or when metallic conduits are used for the cables.	N1	CFW500-KN1A (frame size A) CFW500-KN1B (frame size B) CFW500-KN1C (frame size C) CFW500-KN1D (frame size D)	Factory or user installation
Cable shield kit	Accessory	Used to shield the power and control cables. Important: for the version with RFI filter, this filter comes with the product.	-	CFW500-KPCSA (frame size A) CFW500-KPCSB (frame size B) CFW500-KPCSC (frame size C) CFW500-KPCSD (frame size D)	User installation
I/O expansion modules (plug-in) ³⁾	Accessory	Used to configure the I/O points according to the needs of the application/machine.	-	CFW500-IOS CFW500-IOD CFW500-IOAD CFW500-IOR	-
Communication module (plug-in) ³⁾	Accessory	Used for the communication of the CFW500 with the main networks of the market (Fieldbus).	-	CFW500-CUSB (USB) CFW500-CCAN (CANopen /DeviceNet) CFW500-CRS232 CFW500-CRS485 CFW500-CPDP (Profibus-DP)	-
Flash memory module (plug-in) ³⁾	Accessory	Used to download the programming of a CFW500 to others without having to power them up.	-	CFW500-MMF	-
Remote HMI	Accessory	Used to transfer the operation to the panel door or machine console. Maximum distance of 10 m. Degree of protection IP54.	-	CFW500-HMIR	-
Cables for remote HMI	Accessory	Used to interconnect the CFW500 to the remote HMI (CFW500-HMIR).	-	CFW500-CCHMIRXM, where cables with lengths (X) of 1, 2, 3, 5, 7,5 and 10 meters	-

Plug-in Modules Specification ³⁾

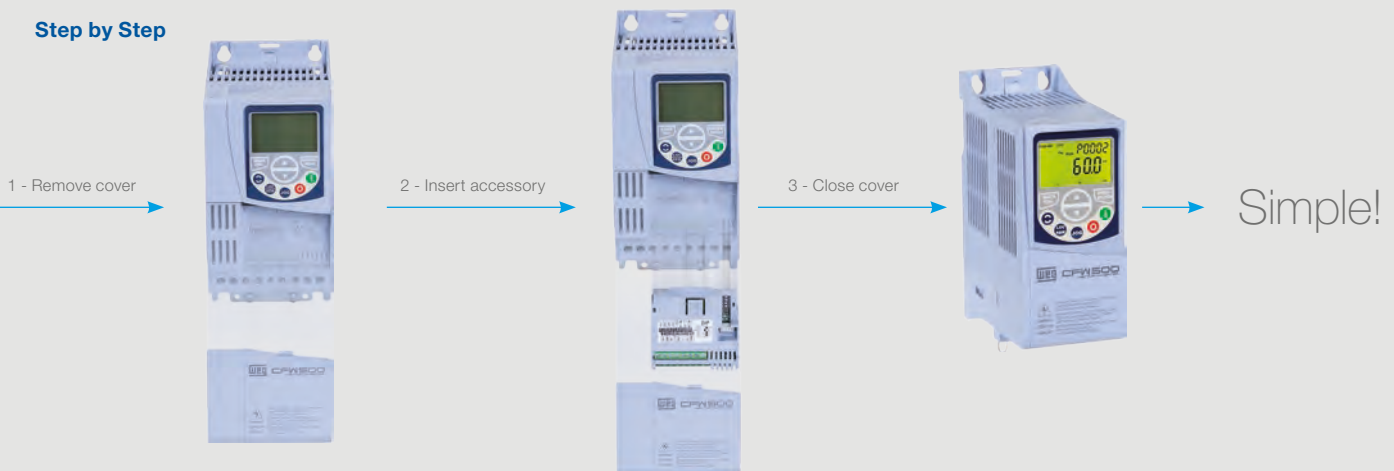
Plug-in module	Functions											
	Inputs		Outputs			USB Port	Fieldbus networks				Power supply	
	Digital	Analog	Analog	Digital relay	Digital transistor		CANopen/DeviceNet	RS232	RS485	Profibus-DP	10 V	24 V
CFW500-IOS	4	1	1	1	1	-	-	-	1	-	1	1
CFW500-IOD	8	1	1	1	4	-	-	-	1	-	1	1
CFW500-IOAD	6	3	2	1	3	-	-	-	1	-	1	1
CFW500-IOR	5	1	1	4	1	-	-	-	1	-	1	1
CFW500-CUSB	4	1	1	1	1	1	-	-	1	-	1	1
CFW500-CCAN	2	1	1	1	1	-	1	-	1	-	1	1
CFW500-CRS232	2	1	1	1	1	-	-	1	1	-	-	1
CFW500-CRS485	4	2	1	2	1	-	-	-	2	-	1	1
CFW500-CPDP	2	1	1	1	1	-	-	-	1	1	-	1

Notes: 1) Optional = hardware resources added to the CFW500 in the manufacturing process accessory = hardware resource requested as a separated item.

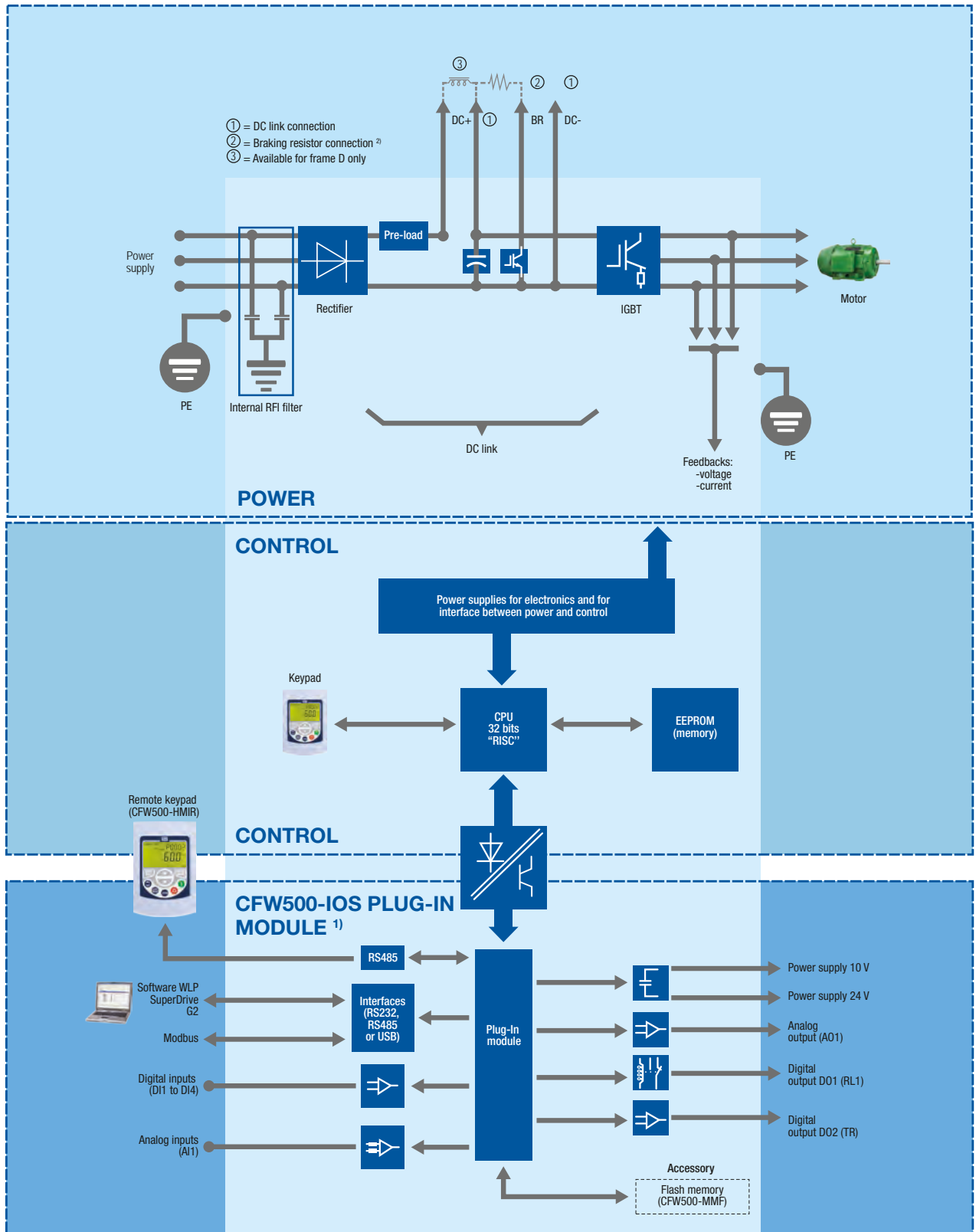
2) Request the product according to the code available on page 10.

3) All models of plug-in modules have at least one RS485 port. The CFW500-CRS485 plug-in module has two RS485 ports. The CFW500 allows installing one plug-in module per unit.

Step by Step



Block Diagram



Notes: 1) The number of inputs and outputs (analog and digital), as well as other resources, may vary according to the used plug-in module. For further information, refer to the CFW500 user manual.
 2) Not available for frame size A.

Technical Data

Power supply	Voltage and power range	1-phase, 200-240 V ac (+10%-15%) 0.25 to 2 HP (0.25 to 1.5 kW)
		1-phase/3-phase, 200-240 V ac (+10%-15%) 0.25 to 3 HP (0.25 to 2.2 kW)
3-phase, 200-240 V ac (+10%-15%) 2 to 7.5 HP (1.5 to 5.5 kW)		
3-phase, 380-480 V ac (+10%-15%) 0.5 to 12.5 HP (0.25 to 7.5 kW)		
	Supply frequency	50/60 Hz (48 Hz to 62 Hz)
Motor connection	Voltage	3-phase, 0-100% of supplied voltage
	Output frequency	0 a 500 Hz
	Displacement power factor	>0.97
	Overload capacity	1.5 x I _n (drive) for 1 minute every 6 minutes
	Switching frequency	Default 5 kHz (selectable 2.5 to 15 kHz)
	Acceleration time	0.1 to 999s
	Desacceleration time	0.1 to 999s
Environment	Temperature	40 °C - NEMA1
		40 °C - IP20 side by side and/or with RFI filter
		50 °C - IP20 without RFI filter (except the models for 9.6 A and 24 A for 200-240 V)
		2% of current derating for each °C above the specific operating temperature, limited to an increase of 10 °C
	Humidity	5% to 95% non-condensing
Altitude	Up to 1,000 m - rated conditions	
	1,000 m to 4,000 m - 1% of current derating for each 100 m above 1,000 m of altitude	
Degree of protection	IP20 or NEMA1 (with kit NEMA1)	
Performance	V/f control	Speed regulation: 1% of the rated speed (with slip compensation)
		Speed variation range: 1:20
Vector control (VWV)	Speed regulation: 1% of the rated speed	
	Speed variation range: 1:30	
Braking methods	DC current applied to motor dynamic braking	Available as standard for frame sizes B and C. For frame size A "DB" models has to be used. An extra resistor must be fitted in for dynamic braking capability
Safety	Protection	Overcurrent/phase-phase short circuit in the output
		Overcurrent/phase-ground short circuit in the output
		Under/overvoltage
		Overtemperature in the heatsink
		Overload in the motor
		Overload in the power module (IGBTs)
		External alarm / fault
Setting error		
Communication	Modbus-RTU	All plug-in modules for RS485 and CFW500-CRS232 for RS232
	Profibus-DP	Plug-in module CFW500-CPDP
	DeviceNet	Plug-in module CFW500-CCAN
	CANopen	Plug-in module CFW500-CCAN
Chokes (external as accessory)	AC input chokes	For reducing THD
	AC output chokes	For longer motor cables

Technical Data - Standards

Safety standards	UL 508C	Power conversion equipment.
	UL 840	Insulation coordination including clearances and creepage distances for electrical equipment.
	EN 61800-5-1	Safety requirements electrical, thermal and energy.
	EN 50178	Electronic equipment for use in power installations.
	EN 60204-1	Safety of machinery. Electrical equipment of machines. Part 1: General requirements. <i>Note: For the machine to comply with this standard, the manufacturer of the machine is responsible for installing an emergency stop device and equipment to disconnect the input power supply.</i>
	EN 60146 (IEC 146)	Semiconductor converters.
Electromagnetic Compatibility (EMC) Standards	EN 61800-2	Adjustable speed electrical power drive systems - Part 2: General requirements - Rating specifications for low voltage adjustable frequency AC power drive systems.
	EN 61800-3	Adjustable speed electrical power drive systems - Part 3: EMC product standard including specific test methods.
	EN 55011	Limits and methods of measurement of radio disturbance characteristics of industrial, scientific and medical (ISM) radio-frequency equipment.
	CISPR 11	Industrial, scientific and medical (ISM) radio-frequency equipment - Electromagnetic disturbance characteristics - Limits and methods of measurement.
	EN 61000-4-2	Electromagnetic compatibility (EMC) - Part 4: Testing and measurement techniques - Section 2: Electrostatic discharge immunity test.
	EN 61000-4-3	Electromagnetic compatibility (EMC) - Part 4: Testing and measurement techniques - Section 3: Radiated, radio-frequency, electromagnetic field immunity test.
	EN 61000-4-4	Electromagnetic compatibility (EMC) - Part 4: Testing and measurement techniques - Section 4: Electrical fast transient/burst immunity test.
	EN 61000-4-5	Electromagnetic compatibility (EMC) - Part 4: Testing and measurement techniques - Section 5: Surge immunity test.
Mechanical construction standards	EN 60529	Degrees of protection provided by enclosures (IP code).
	UL 50	Enclosures for electrical equipment.



WEG Worldwide Operations

ARGENTINA

WEG EQUIPAMIENTOS
ELECTRICOS
San Francisco - Cordoba
Phone: +54 3564 421 484
info-ar@weg.net
www.weg.net/ar

WEG PINTURAS - Pulverlux
Buenos Aires
Phone: +54 11 4299 8000
tintas@weg.net

AUSTRALIA

WEG AUSTRALIA
Victoria
Phone: +61 3 9765 4600
info-au@weg.net
www.weg.net/au

AUSTRIA

WATT DRIVE - WEG Group
Markt Piesting - Vienna
Phone: +43 2633 404 0
watt@wattdrive.com
www.wattdrive.com

BELGIUM

WEG BENELUX
Nivelles - Belgium
Phone: +32 67 88 84 20
info-be@weg.net
www.weg.net/be

BRAZIL

WEG EQUIPAMENTOS ELÉTRICOS
Jaraguá do Sul - Santa Catarina
Phone: +55 47 3276-4002
info-br@weg.net
www.weg.net/br

CHILE

WEG CHILE
Santiago
Phone: +56 2 784 8900
info-cl@weg.net
www.weg.net/cl

CHINA

WEG NANTONG
Nantong - Jiangsu
Phone: +86 0513 8598 9333
info-cn@weg.net
www.weg.net/cn

COLOMBIA

WEG COLOMBIA
Bogotá
Phone: +57 1 416 0166
info-co@weg.net
www.weg.net/co

ECUADOR

WEG ECUADOR
Quito
Phone: 5144 339/342/317
wegecuador@weg.net
www.weg.net/ec

FRANCE

WEG FRANCE
Saint Quentin Fallavier - Lyon
Phone: +33 4 74 99 11 35
info-fr@weg.net
www.weg.net/fr

GERMANY

WEG GERMANY
Kerpen - North Rhine Westphalia
Phone: +49 2237 9291 0
info-de@weg.net
www.weg.net/de

GHANA

ZEST ELECTRIC GHANA
WEG Group
Accra
Phone: +233 30 27 664 90
info@zestghana.com.gh
www.zestghana.com.gh

INDIA

WEG ELECTRIC INDIA
Bangalore - Karnataka
Phone: +91 80 4128 2007
info-in@weg.net
www.weg.net/in

WEG INDUSTRIES INDIA
Hosur - Tamil Nadu
Phone: +91 4344 301 577
info-in@weg.net
www.weg.net/in

ITALY

WEG ITALIA
Cinisello Balsamo - Milano
Phone: +39 02 6129 3535
info-it@weg.net
www.weg.net/it

JAPAN

WEG ELECTRIC MOTORS
JAPAN
Yokohama City - Kanagawa
Phone: +81 45 550 3030
info-jp@weg.net
www.weg.net/jp

MALAYSIA

WATT EURO-DRIVE - WEG Group
Shah Alam, Selangor
Phone: 603 78591626
info@wattdrive.com.my
www.wattdrive.com

MEXICO

WEG MEXICO
Huehuetoca
Phone: +52 55 5321 4231
info-mx@weg.net
www.weg.net/mx

VOLTRAN - WEG Group

Tizayuca - Hidalgo
Phone: +52 77 5350 9354
www.voltran.com.mx

NETHERLANDS

WEG NETHERLANDS
Oldenzaal - Overijssel
Phone: +31 541 571 080
info-nl@weg.net
www.weg.net/nl

PERU

WEG PERU
Lima
Phone: +51 1 209 7600
info-pe@weg.net
www.weg.net/pe

PORTUGAL

WEG EURO
Maia - Porto
Phone: +351 22 9477705
info-pt@weg.net
www.weg.net/pt

RUSSIA and CIS

WEG ELECTRIC CIS
Saint Petersburg
Phone: +7 812 363 2172
info-ru@weg.net
www.weg.net/ru

SOUTH AFRICA

ZEST ELECTRIC MOTORS
WEG Group
Johannesburg
Phone: +27 11 723 6000
info@zest.co.za
www.zest.co.za

SPAIN

WEG IBERIA
Madrid
Phone: +34 91 655 30 08
info-es@weg.net
www.weg.net/es

SINGAPORE

WEG SINGAPORE
Singapore
Phone: +65 68589081
info-sg@weg.net
www.weg.net/sg

SCANDINAVIA

WEG SCANDINAVIA
Kungsbacka - Sweden
Phone: +46 300 73 400
info-se@weg.net
www.weg.net/se

UK

WEG ELECTRIC MOTORS U.K.
Redditch - Worcestershire
Phone: +44 1527 513 800
info-uk@weg.net
www.weg.net/uk

UNITED ARAB EMIRATES

WEG MIDDLE EAST
Dubai
Phone: +971 4 813 0800
info-ae@weg.net
www.weg.net/ae

USA

WEG ELECTRIC
Duluth - Georgia
Phone: +1 678 249 2000
info-us@weg.net
www.weg.net/us

ELECTRIC MACHINERY

WEG Group
Minneapolis - Minnesota
Phone: +1 612 378 8000
www.electricmachinery.com

VENEZUELA

WEG INDUSTRIAS VENEZUELA
Valencia - Carabobo
Phone: +58 241 821 0582
info-ve@weg.net
www.weg.net/ve

For those countries where there is not a WEG own operation, find our local distributor at www.weg.net.



WEG Group - Automation Business Unit
Jaraguá do Sul - SC - Brazil
Phone: +55 47 3276 4000
automacao@weg.net
www.weg.net

