

# **Shot Timer User's Manual**

**By: AimTech Systems**

**Revision 1.0**

## Table of Contents

Introduction .....	3
Hardware Requirements.....	3
Computer Requirements .....	4
Loading the Software .....	4
Using the SHOT TIMER System .....	10
Basic Operation.....	10
Software Operation .....	10
Start Delay.....	10
Starting the Timer .....	11
Reset Timer .....	11
Export Data .....	11
Close Software .....	11
Support .....	11

**Warning!** This system is designed to be used with a laser insert while dry firing an UNLOADED firearm. Remove all ammunition from the area training will take place to ensure safety. Any time the firearm is picked up it should be checked and cleared before training. It is best to have a second person confirm the firearm is clear of any ammunition. Always treat a firearm as if it is loaded and keep it pointed in a safe direction.

## Introduction

This document will describe all the functions and how to use the Shot Timer from AIMTech Systems. The Shot Timer is designed to allow you to safely practice marksmanship skills without going to the range or the safety concerns of live weapons. The Shot Timer is designed to be used in conjunction with the 3" Laser Targets from AimTech Systems. The wireless targets can be placed anywhere line of sight up to 50 feet away from the Wireless Receiver.

## Hardware Requirements

This system requires the use of the 3" Laser Targets either with built in wireless transmitter or the add-on wireless transmitter module. The targets and the transmitter modules are not included with the Shot Timer and must be purchased separately. As many targets as liked may be used.



The Shot Timer includes the Shot Timer software, USB Wireless Receiver, USB Cable and Wireless Remote start button.



## Computer Requirements

- 2.4 GHz Intel Core 2 Duo processor or equivalent
- 2 GB RAM
- 200 MB hard drive space
- USB 2.0 Port
- 1280 x 720 minimum screen resolution
- Windows 7 or XP

## Loading the Software

This section will cover how to load the SHOT TIMER software to your Windows 7 computer.

1. Locate the provided SHOT TIMER software disk that came with the system.
2. Insert the disk, label side up, into the computers DVD ROM drive and close the drive.
3. Wait a moment for the installer to auto launch. (If the software does not auto launch manually navigate to the DVD drive and double click to open the DVD content. Double Click on the SetupSHOT TIMER.exe to launch the installer.)



Figure 1

4. Click Next

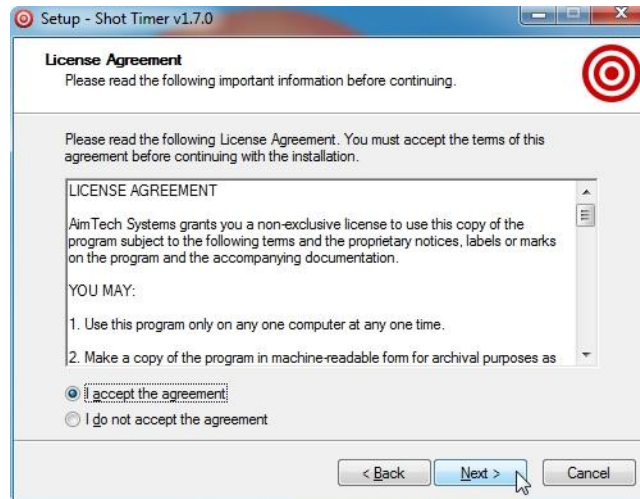


Figure 2

5. Read the license agreement and select "I accept the agreement" then click Next.

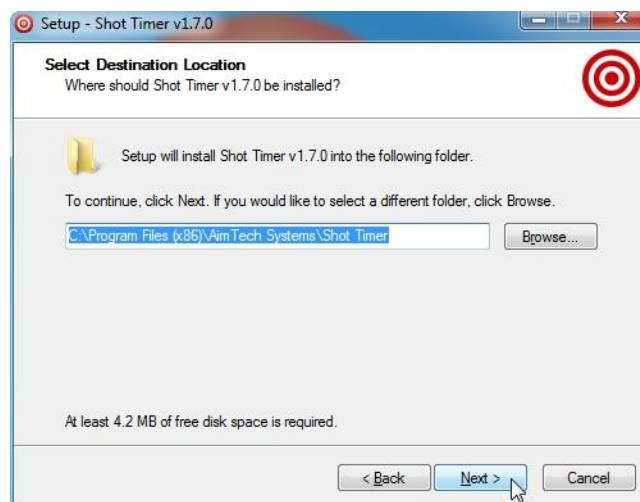


Figure 3

6. Click Next



Figure 4

7. Click Next

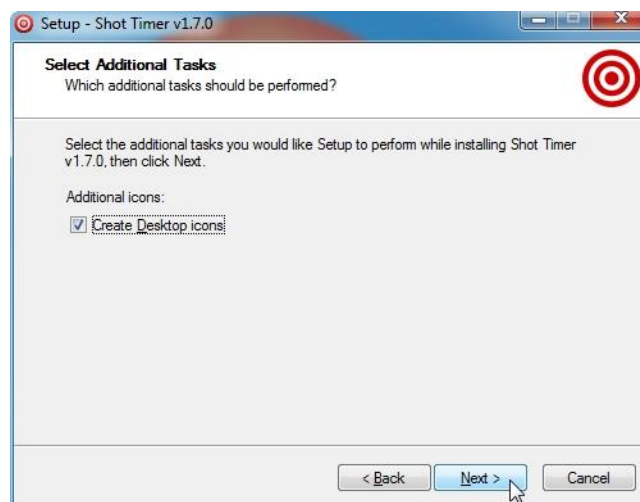


Figure 5

8. Click Next

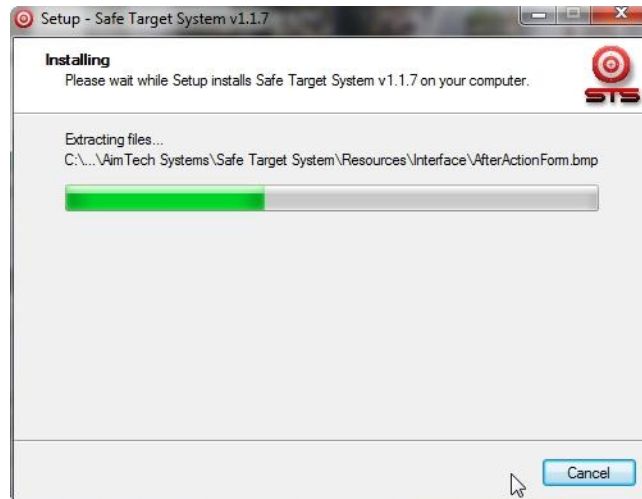


Figure 6

9. Please wait a moment while the SHOT TIMER files are loaded.

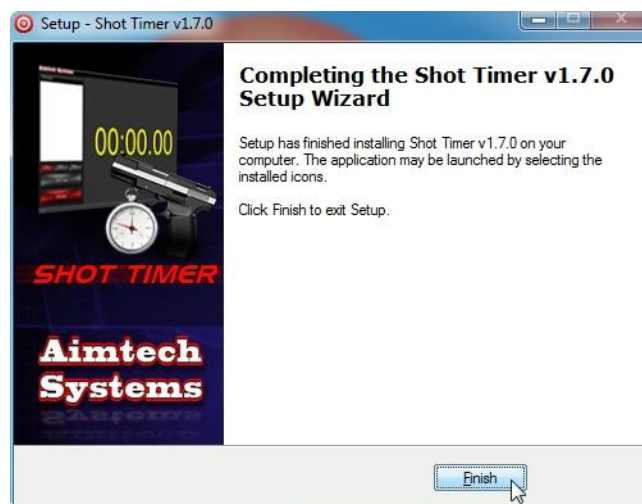
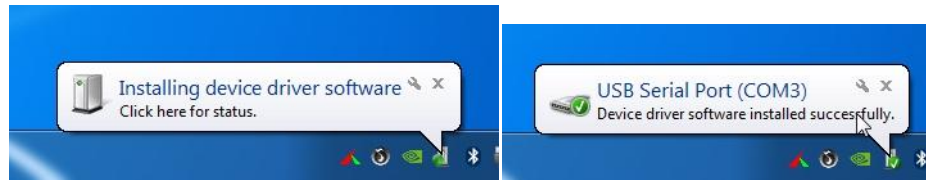


Figure 7

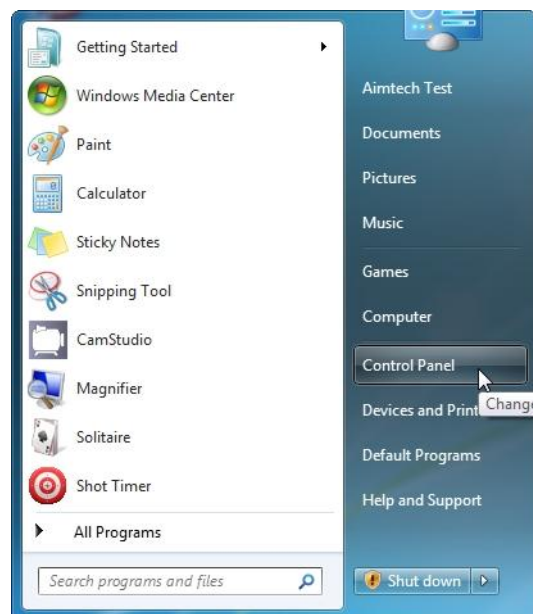
10. Click Finish.
11. Connect the provided USB cable into an open USB port on your computer and then the USB port on the Wireless Receiver.



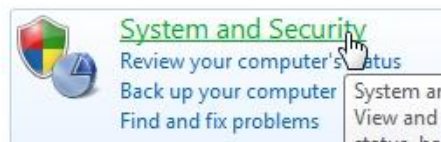
12. Windows will now look for and install the proper driver for the Wireless Receiver. This may take up to a minute. A pop-up in the system tray should indicate the driver is being installed. Once it is done another pop-up should show that the device has been installed successfully.



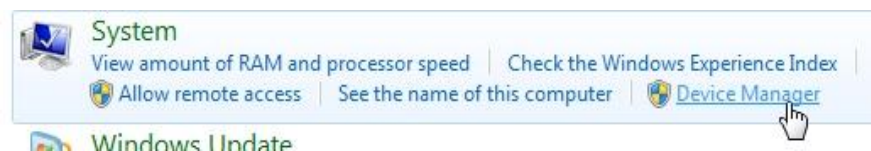
13. If Windows fails to find and install the USB driver it will need to be manually located and loaded. To perform this, click the Start Menu and select Control Panel.



14. Select System and Security.

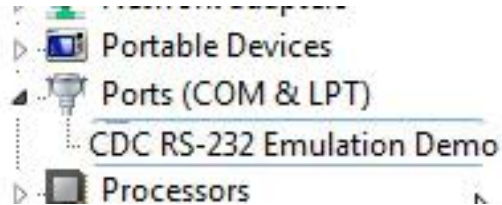


15. Under System select Device Manager.

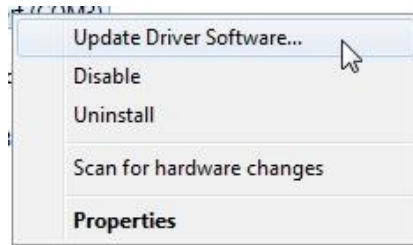




16. Locate and expand the Ports (COM & LPT) section by clicking on the triangle to the left of it.



17. Right-Click on CDC RS-232 device and select Update Driver Software.



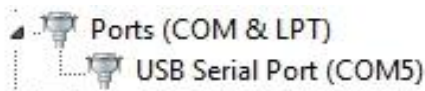
18. Select Browse. Then navigate to AimTech Systems/Shot Timer/Wireless Board Drivers and then click OK.



19. Ensure the file path is correct and then click Next. The driver will now be loaded.



20. Once the driver is loaded the device name in the Device Manager List should show as USB Serial Port (COM).



## Using the SHOT TIMER System

This section will cover how to use the SHOT TIMER System and all of its features. Please make sure you have connected the Wireless Receiver to a USB port on your computer before proceeding.

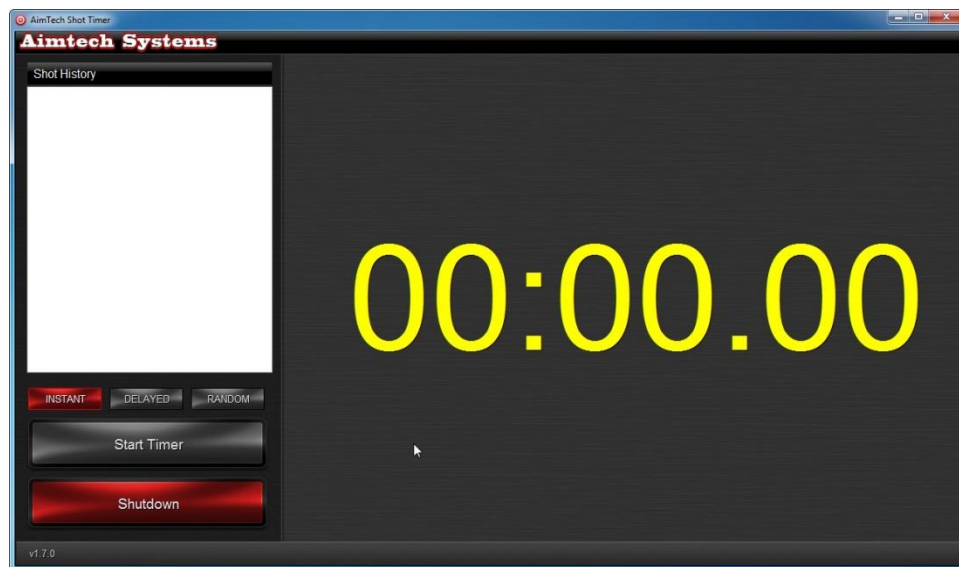
### Basic Operation

1. Ensure the Wireless Receiver is plugged into the computer before you run the Shot Timer software.
2. Place the 3" Targets in the desired location within 50 feet line of sight of the receiver.
3. Power on the 3" Targets.
4. Ensure firearm is unloaded and laser insert is properly installed.
5. Launch the Shot Timer software by double-clicking on the Shot Timer icon on the Windows Desktop.



### Software Operation

The Shot Timer software will launch full screen at a resolution of 1280 x 720.



### Start Delay

The Shot Timer can be set to one of 3 start delays.

- Instant - Starts the timer as soon as the start button is pressed.
- Delayed - Starts the timer after a 5 second delay once the start button is pressed.
- Random - Starts the timer after a random delay between 2 and 5 seconds once the start button is pressed.

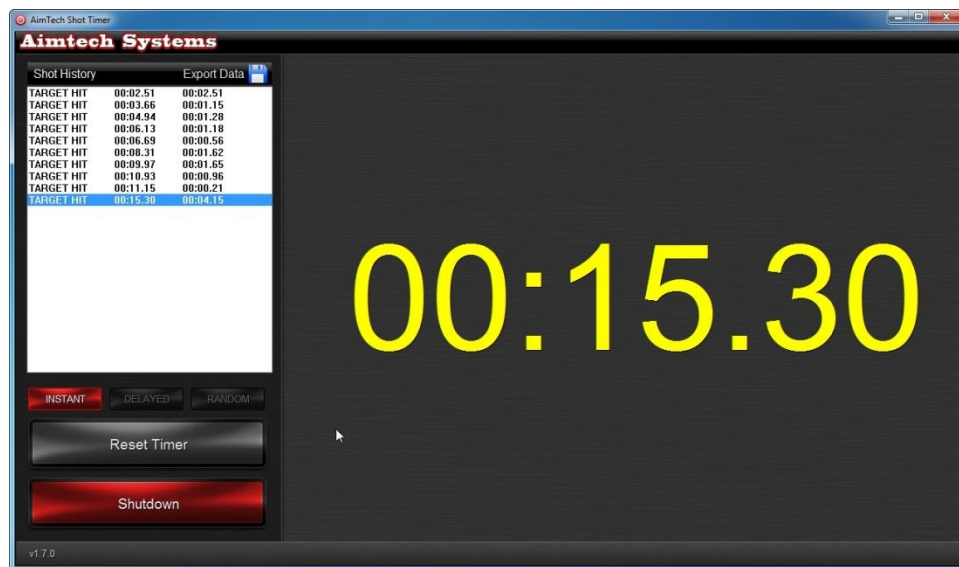
## Starting the Timer

The timer can be started either by clicking Start Timer with the mouse or by pressing the remote start button.

Once the timer has been started all shots detected by the 3" targets are logged along with the total elapsed time and split time in the Shot History window. The large yellow time readout displays the total elapsed time up to the last shot taken.

## Reset Timer

To clear the current session and make ready for a new one click Reset Timer. (Note: Once Reset Timer is clicked all data from the current session is deleted and can no longer be saved.)



## Export Data

The shot history can be saved to a file by clicking the Export Data icon above the shot history window. This will save the file to <C:\AimTech Systems\Shot Timer\Data Export>

## Close Software

To close the software click Shutdown.

## Support

If you have any problems, questions or suggestions please call us at 281-277-8076 or shoot us an email at [support@aimtechsystems.com](mailto:support@aimtechsystems.com).

Thank You for purchasing the Shot Timer. We hope you will enjoy it as much as we do.