

Floralife® Dosing Systems

User Manual

As the owner of a Floralife® Dosing System, you'll want to use the following information to keep your dosing unit at its optimum, for a long life and for better quality product output. The following procedures should help give you the answers you'll need.

Floralife features one of the three units shown to the right. The instructions given in this manual apply to all of these systems, with a few exceptions that are listed.

FAQs

Q. Why is it important to have the correct dose of flower food for the solution?

A. The correct dose of flower food maximizes flower life for maximum customer satisfaction. When hand-measuring each dose of flower food, one often "approximates." Severely underdosed solution could actually reduce flower life and reduce customer satisfaction.

Q. Does the dosing system arrive set to the correct dose for my flower food?

A. No. A Floralife® Dosing Unit is adjustable. It will leave the factory set at 1%. You can adjust this according to the product used.

Q. Is there a warranty on the system?

A. Yes. The machine is covered under a (12 month) manufacturer's warranty.

Installation

We recommend to use a professional plumber for installation. Detailed installation instructions are included in the dispensing unit box. No electrical hook up is required. The suggested water pressure by manufacturer is 3 - 120 psi for the MixRite, and 15 - 125 psi for The Blend Center. Also, it is best if your water is contaminant free.



Proper Dosing

Liquid Products

1. Setting Check

- First double check to make sure the setting on the dosing injector is correctly set to the recommendations for the product's dosage rate (see chart).
- If the setting is not correct, adjust unit to the correct setting.

Note: For The Blend Center, the dilution pin color determines the dosage rate. The MixRite and Large Volume units use the adjustable blue sleeve, as shown above right.

Suggested Products and Settings	
Floralife Crystal Clear® (Flower Food Clear 300)	1.6%
Clear 200 storage and transport treatment	1.0%
200 storage and transport treatment	1.0%
D.C.D.® cleaner	0.8%
Clear 200 ULTRA storage and transport treatment	0.5%
HydraFlor® 100 hydrating treatment	0.5%

Proper Dosing, continued

2. Water Supply pH Check to Confirm Proper Dosing

- Check the pH of your water.
- Prepare a hand-mix sample. Add the correct volume of liquid concentrate to 1 L of water according to the chart to the right, and mix, then check the pH of the solution.
- Interpretation
 - If the pH values from the two measurements are within 0.1 pH units, the unit is dosing properly.
 - If the pH of the sample from the unit < the pH of hand-mixed sample = Over-dosing.
 - If the pH of the sample from the unit > the pH of hand-mixed sample = Under-dosing.

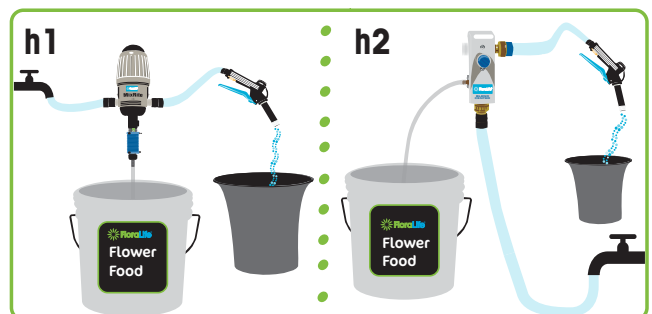
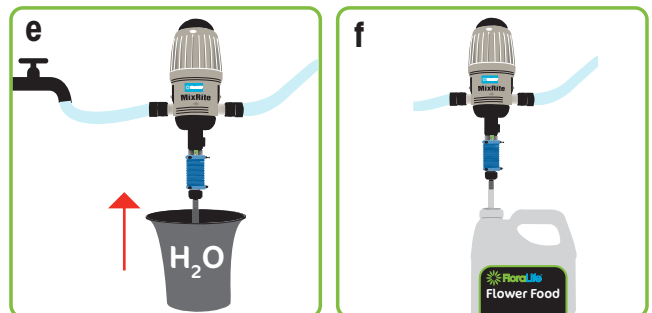
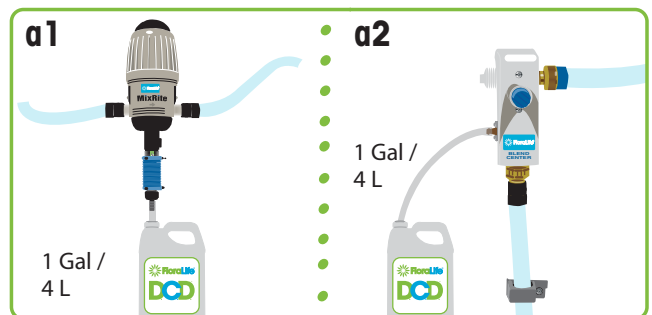
Product Dosage	Setting – option 1	Setting – option 2
5 ml / L	1 : 200	0.5%
10 ml / L	1 : 100	1.0%
16 ml / L	1 : 62.5	1.6%
20 ml / L	1 : 50	2.0%

Proper Maintenance

To maintain a clean, properly operating system, it is best to flush the system with fresh water at the end of each day. One of the following procedures should be performed once a month.

1. CLEAR SOLUTIONS: Floralife Crystal Clear® flower food 300, Clear 200 storage and transport treatment, Clear ULTRA 200 storage and transport concentrate treatment, and Special Blend 300 for pure water and for hard water

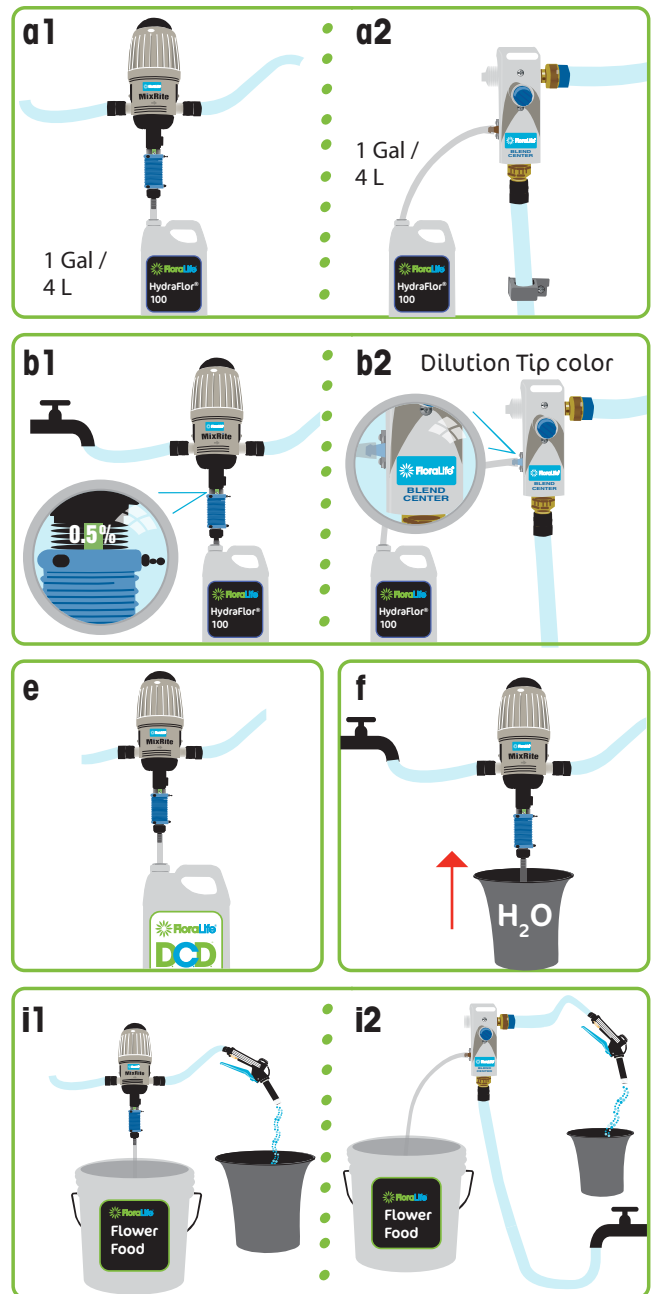
- Insert the tube end that normally goes into the concentrate tank into a clean plastic container filled with 1 gallon of Floralife® D.C.D.®. (Caution: Please follow all labeled safety precautions on D.C.D.® label.)
- Set the dosing injector to the 1% ratio.
- Run 1 quart of D.C.D.® through the dosing system (properly discard the dispensed solution) and let it set overnight (minimum of 8 hours).
- Wipe the unit clean with a warm, wet cloth to remove any existing residues.
- The next morning, remove the tube from the Floralife® D.C.D.® container and flush the tube with clean water. Place the tube into the flower food concentrate.
- Set the dosing injector to the correct setting based upon the flower food used (see chart on page 1 or label instructions).
- Let the injector system flush any remaining D.C.D.® through the system until the flower food solution comes through the dispensing unit (approximately 1 - 2 minutes).
- Resume the use of the injector system with Floralife® flower food, for flower processing.



Proper Maintenance, *continued*

2. NONCLEAR SOLUTIONS: Floralife® 200 storage and transport treatment, and ULTRA 200 storage and transport concentrate treatment

- Insert the tube end that normally goes into the concentrate tank into a clean plastic container filled with 1 gallon of Floralife® HydraFlor® 100 hydrating treatment for cut flowers.
- Set the dosing injector to the 0.5% ratio.
- Run 1 quart of HydraFlor® 100 through the injector system (properly discard the dispensed solution) and let it set overnight (minimum of 8 hours).
- Wipe the unit clean with a warm, wet cloth to remove any existing residues.
- The next morning, remove the tube from the Floralife® HydraFlor® 100 container and insert it into a clean, plastic container filled with 1 quart of D.C.D.®. Run this through the dosing system. (Caution: Please follow all labeled safety precautions on the D.C.D.® label.)**
- Remove the tube from the Floralife® D.C.D.® container and flush the tube with clean water.
- Once done, place the tube into the flower food concentrate. Set the dosing unit to the correct setting based upon the flower food used (see chart on page 1 or label instructions).
- Let the injector system flush any remaining D.C.D.® through the system until the flower food solution comes through the dispensing unit (approximately 1 - 2 minutes).
- Resume the use of the injector system with Floralife® food, for flower processing.



**Special Note: the above procedure must be done as a two-step process.

DO NOT MIX Floralife® HydraFlor® 100 and Floralife® D.C.D.® to make a single solution.

Be sure to clean your dispensing system regularly!

Troubleshooting

Q: How often do I need to clean my dosing system?

A: It's best to flush the system with fresh water at the end of each day. Perform monthly maintenance as instructed in this manual.

Q: Why isn't any liquid being drawn up from the Floralife® Flower Food concentrate bucket?

A: Check the following:

- The Floralife® Flower Food concentrate bucket still has solution in it.
- The tube is not sealed to the bottom of the unit (has an air leak).
- The clear tube could be stretched at the top or not pushed up all the way.
- The weight at the bottom of the tube is missing.
- The screen on the bottom of the tube is clogged.
- The tube is kinked or has a hole.

Q: The concentrate solution bucket is filling up with water.

A: The check valve in the bottom of the unit is not working: clean or replace.

Q: Only a small stream of water is coming through.

A: Check the following:

- Check your water pressure.
- See if the system is clogged due to improper care and cleaning.

For service or repairs, contact DEMA at 1-800-325-3362.



Floralife, a division of Smithers-Oasis Company

751 Thunderbolt Drive • Walterboro, SC 29488 • 800.323.3689 • 843.538.3839 • www.floralife.com

[Africa](#) | [Asia](#) | [Australia](#) | [Central America](#) | [Europe](#) | [North America](#) | [South America](#)