

# MAXI VAC

5.5 HP Gas or 2 HP Electric  
Dust Collection System

## User's Manual



FS050



FS200



SPS10



LNx8



X3

Use the  
Maxi Vac  
with your  
equipment

VM 5.5 Deluxe  
P/N: VM1070003  
depicted with 2 micron canister  
filter w/cleaning bar  
P/N: VM23



# 1-800-653-9311

[www.SmithMfg.com](http://www.SmithMfg.com)

Phone: 954-941-9744 • Fax: 954-545-0348

## INDEX

Page	Contents
2	Index
3	Safety Instructions for all Power Tools
4	Safety Instructions for Dust Collectors
5	Maintenance
6	Safety Instructions for Power Supply
7	Converting your Dust Collector to 220 Volts
8	Troubleshooting
9-10	Parts List
11	Exploded Parts Diagram
12	Replacement Parts
13-14	Filter w/Cleaner Bar - Parts List & Assembly
15	Maintenance Log
16	Limited Equipment Warranty Info
17	Warranty Activation

## **SAFETY INSTRUCTIONS FOR ALL POWER TOOLS**

1. **KNOW YOUR EQUIPMENT.** Read and understand owner's manual and labels affixed to the equipment. Learn its application and limitations as well as the specific potential hazards peculiar to this equipment.
2. **GROUND THE EQUIPMENT.** This machine is equipped with an approved 3-conductor cord and a 3-prong grounding type plug to fit the proper grounding type receptable. The green conductor in the cord is the grounding wire. Never connect the ground wire to a live terminal.
3. **KEEP GUARDS IN PLACE.** Guards must be in working order, and in proper adjustment and alignment.
4. **REMOVE ADJUSTING KEY AND WRENCHES.** From a habit of checking to see that keys and adjusting wrenches are removed from the tool before turning it on.
5. **KEEP WORK AREA CLEAN.** Cluttered areas and benches invite accidents.
6. **AVOID DANGEROUS ENVIRONMENT.** Do not use power tools in damp or wet locations or expose them to rain. Keep work area well lighted. Provide adequate surrounding workspace.
7. **KEEP CHILDREN AWAY.** All visitors (especially children) should be kept a safe distance from the work area.
8. **MAKE WORKSHOP CHILD-PROOF.** Use padlocks, master switches and remove starter keys.
9. **USE PROPER SPEED.** This equipment will do the job better and safer when operated at the proper speed.
10. **USE RIGHT EQUIPMENT** - Do not force the equipment or attachment to do a job for which it was not designed.
11. **WEAR PROTECTIVE APPAREL.** Do not wear loose clothing, gloves, necklaces, or jewelry (rings, wrist watches, etc.) to get caught in moving parts. Non-slip footwear is recommended. Wear protective hair covering to contain long hair. Roll long sleeves above the elbow.
12. **USE SAFETY GOGGLES.** Wear safety goggles (must comply with ANSI Z87.1) at all times. Everyday glasses have impact resistant lenses, but are NOT safety glasses. Also, use a face or dust mask if a cutting operation is dusty, and ear protection (plugs or muffs) during extended periods of operation.
13. **DO NOT OVERREACH.** Keep proper footing and balance at all times.
14. **MAINTAIN EQUIPMENT WITH CARE.** Keep equipment sharp and clean for best and safest performance. Follow instructions for lubricating and changing accessories.
15. **DISCONNECT EQUIPMENT.** Unplug the equipment before servicing, and when changing accessories or attachments.
16. **AVOID ACCIDENTAL STARTING.** Make sure the switch is in the OFF position before plugging into a live electrical outlet.
17. **USE RECOMMENDED ACCESSORIES.** Consult the owner's manual for recommended accessories. Follow the instructions that accompany the accessories. The use of improper accessories may cause hazards.
18. **NEVER STAND ON YOUR EQUIPMENT.** Serious injury could occur if the equipment tips over. Do not store materials such that it is necessary to stand on the equipment to reach them.
19. **CHECK DAMAGED PARTS.** Before further use of the equipment, a guard or other part that is damaged should be carefully checked to ensure that it will operate properly and perform its intended function. Check for alignment of moving parts, mounting, and any other conditions that may affect its operation. A guard or other part that is damaged should be properly repaired or replaced.
20. **NEVER LEAVE THE EQUIPMENT RUNNING UNATTENDED.** Turn power OFF. Do not leave MV Dust Collection System until the impeller comes to a complete stop.

**NOTICE:**

*This dust collector is designed to remove small chips and dust particles. It is not capable of handling metal pieces, or large pieces or blocks of concrete or asphalt.*

## **IMPORTANT SAFETY INSTRUCTIONS FOR DUST COLLECTORS**

When using your MV Dust Collection System, follow the basic safety precautions, including the following

### **WARNING:**

To reduce the risk of fire, electric shock or injury. Read and understand this owner's manual and all labels on the MV Dust Collection System before operation. Use only as described in this manual. To avoid personal injury or damage to MV Dust Collection System use only recommended accessories.

Sparks inside the electrical parts can ignite flammable vapors or dust. To avoid fire or explosion: Do not vacuum or use this MV Dust Collection System near flammable or combustible liquids, gases, gasoline or other fuels, lighter fluid, cleaners, oil-based paints, natural gas, hydrogen, or explosive dusts like coal dust, magnesium, grain dust, or gun powder.

Do not vacuum anything that is burning or smoking, such as cigarettes or hot ashes.

To avoid health hazards from vapors and dust, do not vacuum toxic materials.

Do not use or store near hazardous material.

Do not use on wet surfaces.

Put unit on a stable, level surface.

Route vacuum hose and electrical cord out of traffic areas.

Unplug from outlet when not in use or before servicing.

Unplug before changing or cleaning dust filter bag or chip bag.

Do not use without dust filter bag and/or chip bag in place.

Do not unplug by pulling on cord. To unplug, grasp the plug, not the cord.

Turn off controls before unplugging.

Do not use with damaged cord, plug or other parts.

If your MV Dust Collection System is not working, as it should because it has missing parts, has been dropped, is damaged, was left outdoors, or was dropped in water, then take it to a service center.

Do not pull or carry by cord, use cord as a handle, close door on cord, or pull cord around sharp edges or corners. Do not run MV Dust Collection System over cord. Keep cord away from heated surfaces.

Do not handle plug with wet hands.

Do not put objects into ventilation opening or vacuum with openings blocked.

Keep vents free of dust, lint, hair, or anything that may reduce airflow.

Keep hair, loose clothing, fingers and all parts of the body from openings and moving parts.

Extension cords in poor condition or not properly rated can pose a fire and shock hazard.

Connect to properly grounded outlet only.

Do not remove the inlet cover, doing so will alter the airflow and damage the motor.



### **Warning!**

**Be sure to turn off engine and disconnect spark plug before changing filter bags.**

## MAINTENANCE

### **Motor:**

Excessive dust in the engine could cause excessive heat. Every effort should be made to prevent foreign material from entering the engine. When operating under conditions likely to permit the accumulation of dust, dirt, or waste material within the engine, a visual inspection should be made at frequent intervals. To remove dust, blow off engine with a low-pressure air hose. *Caution:* To avoid eye injury or adverse reactions to dust, high air pressure should NOT be used, especially in poorly ventilated areas. Any servicing (other than the above cleaning) should be performed by an authorized service center.

### **Cleaning Filter bags:**

Remove the bags from the dust collection unit. Carefully empty any dust and debris contained in the bags, then turn bags inside out. Shake or whisk bags with brush or broom. If this does not clean the bags sufficiently enough, then vacuum with a shop or house vacuum cleaner.



**WARNING:** Do not wash collection bags for any reason! Doing so will void your warranty!

## **HINTS AND TIPS**

- Use duct tape or hose clamps to attach hose and fittings.
- Make sure all connections are tight.
- For maximum airflow, do not restrict opening, avoid too many bends and turns. Use pipe or hose with a smooth inside surface.
- Avoid extreme rises or drops in a ducting system.
- Make sure that bag straps are securely tightened to keep the bag from blowing off or leaking dust.
- If you are restricting your hose to a machine with an opening smaller than 4", always restrict to the smaller opening at the hood of the machine (rather than the dust collector) in order to ensure maximum airflow.
- To eliminate static electricity buildup in long lengths of plastic hose or piping systems, insert a bare copper ground wire (solid, not braided) inside the hose and/or wrap the outside. Connect one end to a ground on the unit you're working on (i.e.: saw, planer, scarifier).
- If you need a third hand when installing the bottom bags on multiple bag systems, make a set of 'S' hooks out of coat hanger wire. Make the whole hook assembly approx. 3" long. Hook one side through a loop in the bag, and the other end over the rim of the collector ring housing. This should allow you to mount the band clamp easily.



You can connect your hose to sizes smaller than 4" by using adapters from SMITH Manufacturing. Call your sales person for details on sizes and availability.

## SAFETY INSTRUCTIONS FOR POWER SUPPLY

**WARNING:** Always make sure the voltage of motor and motor rating agree with the electrical system which is to be connected to your Dust Collector. Connect to the right electrical system and use time delay fuse or circuit breaker. Failure to connect in this way can result in injury from shock or fire. Your Dust Collection System must be properly grounded. Not all outlets are properly grounded. If you are not sure that your outlet is properly grounded, have it checked by a qualified electrician.

**WARNING:** If not properly grounded, this Dust Collection System can cause electrical shock, particularly when used in damp locations.

**WARNING:** To avoid shock or fire, if power cord is worn, cut or damaged in any way, have it replaced immediately.

### GROUNDING INSTRUCTIONS

This dust collector must be grounded. If it malfunctions or breaks down, grounding provides a path of least resistance for electronic current to reduce the risk of electric shock. This dust collection system is equipped - with a cord having an equipment - grounding conductor and grounding plug. The plug must be plugged into an appropriate outlet that is properly installed and grounded in accordance with all local codes and ordinances.

**WARNING:** To maintain proper Dust Collection System grounding, whenever the outlet you are planning to use for this power tool is of the two prong type, do not remove or alter the grounding prong in any manner.

This dust collection system is for use on a normal 120-volt circuit and has a grounded plug that looks like the plug illustrated below. A temporary adapter may be used to connect this plug to a 2-pole receptacle. As shown below, if a properly grounded outlet is not available. The temporary adapter should be used only until a grounded outlet can be installed by a qualified electrician. The green colored rigid ear, lug, or the like, extending from the adapter, must be connected to a permanent ground such as properly grounded outlet box cover. Whenever the adapter is used, it must be held in place by a metal screw.

**WARNING:** Improper connection of the equipment grounding conductor can result in a risk of electric shock. Check with a qualified electrician if you are in doubt as to whether the outlet is properly grounded. Do not modify the plug provided. If it will not fit the outlet, have a proper outlet installed by a qualified electrician.

**WARNING:** The adapter illustrated is for use only if you already have a properly grounded 2-prong receptacle.

**NOTE:** In Canada, the use of a temporary adapter is not permitted by the Canadian Electrical Code.

### EXTENSION CORDS (Example for Reference Only)

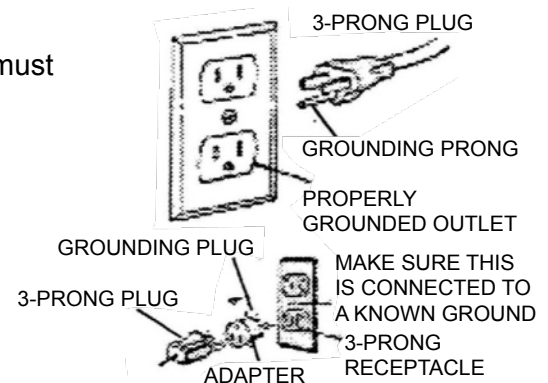
The use of any extension cord will cause some loss of power. Use the following table to determine the minimum wire size (A.W.G.) extension cord. Use only 3-wire extension cords which have 3-prong grounding type plugs and 3-pole receptacles which accept the dust collector's plug.

For circuits that are farther away from electrical circuit box, the wire size must be increased proportionately in order to deliver ample voltage to the dust collector's motor.

#### LENGTH OF CONDUCTOR

#### WIRE SIZES REQUIRED AMERICAN WIRE GAUGE (AWG) 112 volt lines

0-25 feet	No. 16
26-50 feet	No. 14
51-100 feet	No. 12



**Figure #1**



## CONVERTING YOUR DUST COLLECTOR TO 220 VOLTS

### Instructions

**Note 1:** The bottom two wires are the AC input to the motor system and remain in the same place.  
**DO NOT MODIFY.**

**Note 2:** The green ground wire inside the wiring box remains where it is.

**Note 3:** The sub-straight is a feed through sub-straight where the three terminals on the top are connected to the three on the bottom.

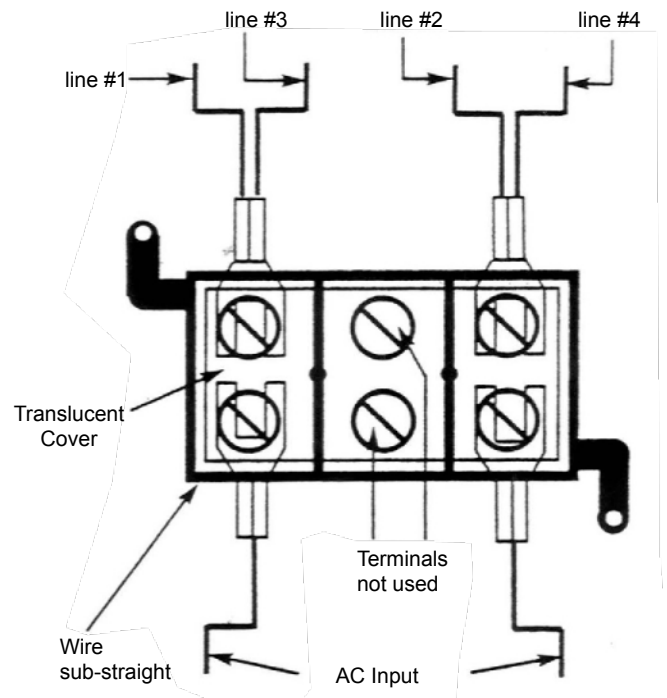
**Note 4:** The middle section of the sub-straight is not used for normal 110 volt operation.

### To convert 110V to 220V operation:

- 1) Disconnect power plug from the wall outlet.
- 2) Remove the screw and cover from the wiring box.
- 3) Remove the translucent cover from the wire sub-straight.
- 4) The system is shipped in the 110 volt configuration, as shown in figure #2.
- 5) On the upper left terminal you will find lines #1 and #3, on the upper right you will find lines #2 and #4. Disconnect line #3 from the upper left terminal, leaving line #1 where it is.
- 6) Disconnect line #2 from the upper right terminal, leaving line #4 where it is.
- 7) The middle section of this sub-straight is normally not used on this system, so you can take advantage of it being there. Take lines #2 and #3 and tie them together using the normally un-used upper middle terminal as in figure #3. Your system is now connected to 220 volts.
- 8) Install the appropriate 220 volt plug to the cord. You are now ready to run at 220.

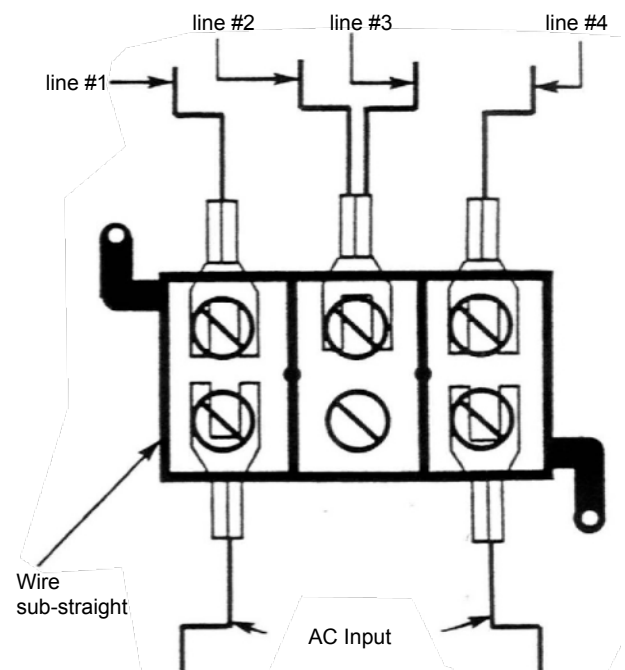
### Wiring box sub-straight

**110 Volts** (Pre-wired)



**Figure #2**

**220 Volts** (Converted)



**Figure #3**

## TROUBLESHOOTING

PROBLEM	POSSIBLE CAUSES	REMEDY SUGGESTED
Motor will not run (gas).	Various	Refer to Engine manual
Excessive dust in air	<ol style="list-style-type: none"> <li>1. Connectors are loose</li> <li>2. Filter/dust bag and/or chip collection bag is releasing dust</li> <li>3. Bag mesh not tight enough</li> </ol>	<ol style="list-style-type: none"> <li>1. Tighten connections</li> <li>2. Dust trapped between bag clamp and housing, or Lower bag may be hung up on dust shoot extension, re-position bag properly</li> <li>3. If using 50 micron bags, switch to 2 micron filters.</li> </ol>
Excessive impeller noise	Picked up large chips/debris Impeller loose or rubbing	Stop machine and disconnect spark plug (unplug from power source if electric). Remove inlet cover to clear of chips or debris. Tighten mounting nut, if loose. If mounting nut is tight then loosen the 4 engine mounting bolts and slide engine back.
Insufficient air flow	Excessive static pressure or air leaks	<p>Clean collector bags</p> <p>Remove any air flow restrictions</p> <p>Enlarge the hose and/or connections to the largest openings possible.</p> <p>Drop down to port size as close as possible to the hood.</p> <p>Bypass any 2nd stage container.</p> <p>Re-run excessive rises or sharp turns in duct system.</p> <p>Check for open gates and/or leaks at connector points.</p>
Vibration	<ol style="list-style-type: none"> <li>1. Loose, unbalanced or bent impeller</li> <li>2. Cracked engine mount</li> </ol>	<ol style="list-style-type: none"> <li>1. Stop machine and disconnect spark plug (unplug from power source if electric). Remove inlet cover and tighten mounting nuts. Replace impeller, if needed</li> <li>2. Replace engine</li> </ol>



### **Warning!**

**Be sure to turn off engine and disconnect spark plug before servicing your unit.**



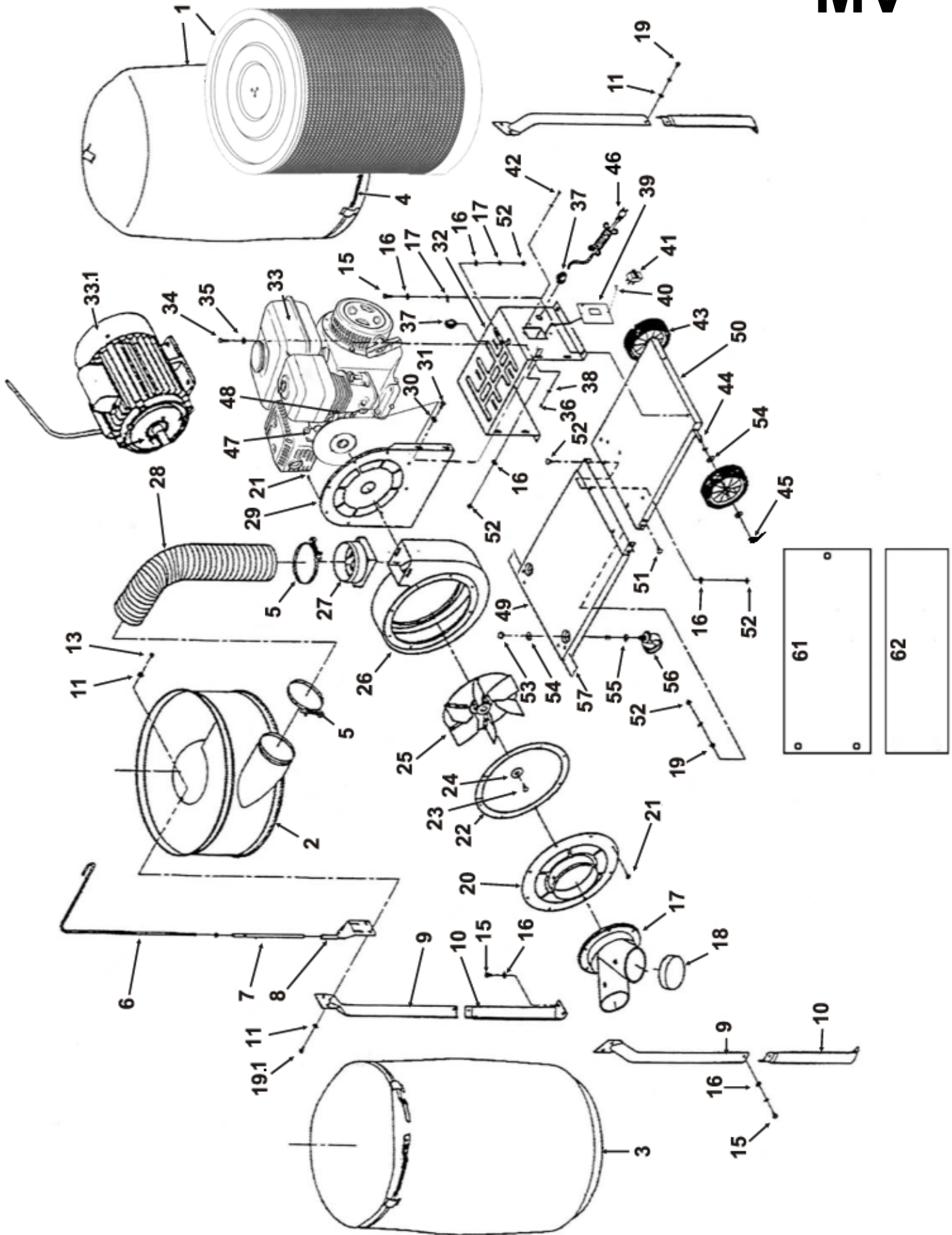
## PARTS LIST

ILL#	PART#	DESCRIPTION	QTY
1	VM03.1	Collection Bags	1
2	VM31	Intake Housing	1
3	VM03.1	Dust Bag	1
4	VM07	63" Band Clamp	2
5	VM16	5" Hose Clamp	2
6	VM19	Hanging Rod (top section)	1
7	VM19.1	Hanging Rod (bottom section)	1
8	VM19.2	Hanger Socket	1
9	VM20	Support Bracket (top)	3
10	VM21	Support Bracket (bottom)	3
11	V.SC30M219	'F' Washer	12
12	VM27	Hex Head Screw, 8mm x 16mm	6
13	VM35	Nut, 8mm	6
14	VM27	Hex Head Screw, 8mm x 16mm	16
15	V.SC30m219	'F' Washer, 8mm	22
16	V.SC30m190	Lock Washer, 8mm	10
17	VM17	'Y' Hose Adapter	1
18	VM17.1	Plastic Cap	1
19	VM27	Hex Cap Screw, 8mm x 16mm	10
19.1	VM28	Hex Cap Screw, 8mm x 18mm	6
20	VM33	Inlet Cover	16
21	VM33.5	Pan Head Screw	10
22	VM33.1	Rubber Packing	1
23	VM11	Hex Cap Screw	1
24	10101802	Fender Washer, 5/16	1
25	VM06	Fan Impeller	1
26	VM13	Ventilation Cylinder	1
27	VM16.1	Hose Connector	1
28	VM16.5	5" Hose	1
29	VM32	Cylinder Bracket	1
30	V.SC30M190	Lock Washer	8

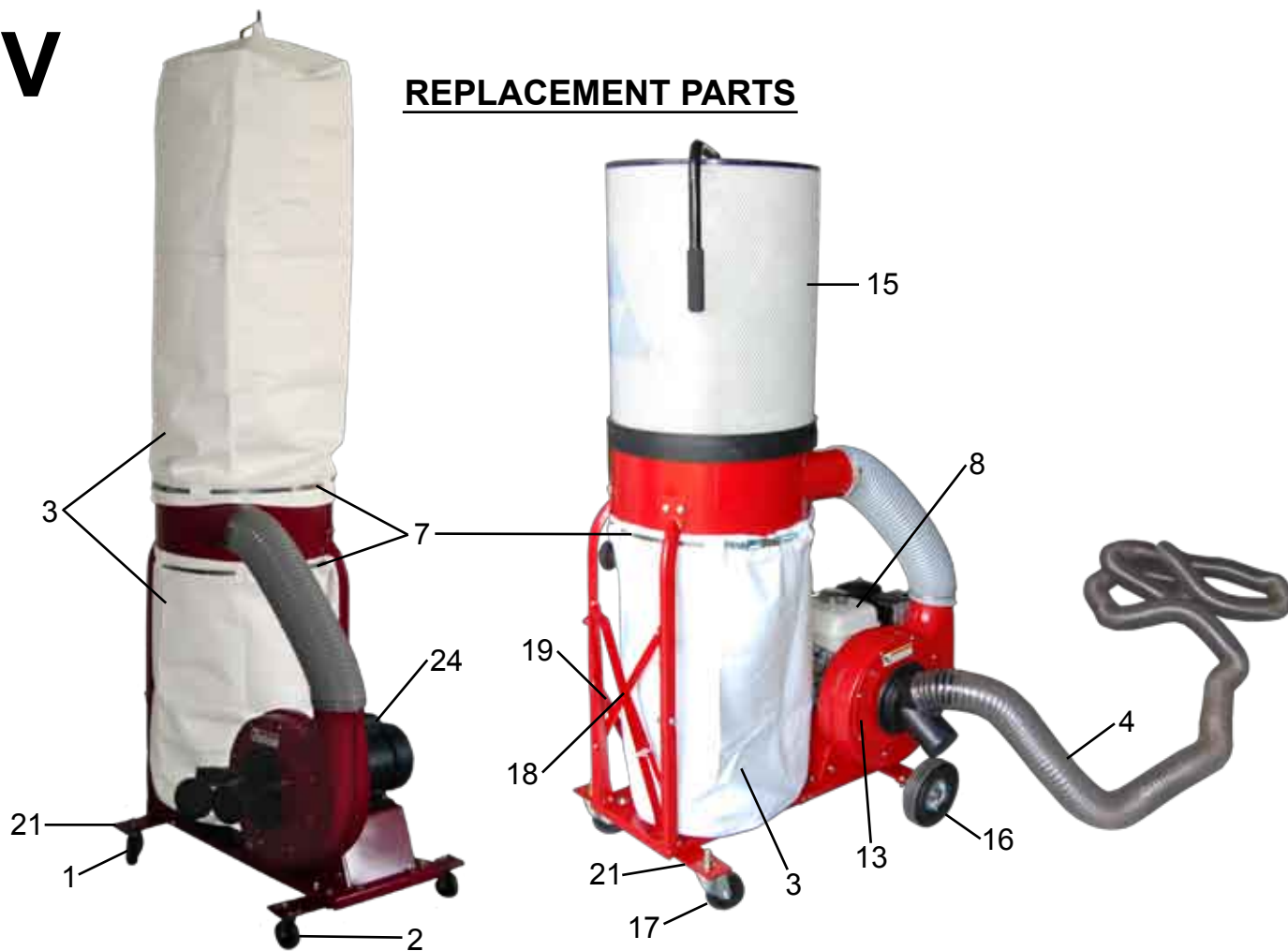
## PARTS LIST (continued)

ILL#	PART#	DESCRIPTION	QTY
31	VM27	Hex Head Screw, 8mm x 16mm	4
32	VM22	Motor Bracket	1
33	RS-E-15026.0	5.5 HP Honda Gas Motor	1
33.1	FS2E-0100-2	2 HP Leeson Electric Motor	1
34	VM28	Hex Head Screw, 8mm x 18mm	4
35	V.SC30M219	'F' Washer, 8mm	4
36	VM35	Hex Nut, 8mm	2
37	N00202	Strain Relief (Electric Unit only)	1
38	V.SC30M219	Washer, 8mm	1
39	620115	Switch Holder (Electric Unit only)	1
40	990861	Screw (Electric Unit only)	2
41	994532	Switch (Electric Unit only)	1
42	990853	Grounding Screw (Electric Unit only)	2
43	VM30	8" Solid Rubber Wheel	2
44	VM40	Axle Shaft Plate Assembly	2
45	168008.2	Hitch Clip Pin	2
46		Power Cord (Electric Models Only)	1
47		Key (comes with gas motor)	1
48	VM41	Vacuum Gasket	1
49	VM42	Left Base	1
50	VM43	Right Base	1
51	VM28	Hex Cap Screw, 8mm x 18mm	6
52	VM27	Hex Cap Screw, 8mm x 16mm	4
53	110046	'F' Washer, 5/8mm	2
54	1012230.1	Structural Washer	12
56	VM34	4" Caster Wheel	2
57	VM38	Brace Plate	1
58	VM37.2	Front Stabilizer (not shown)	1
59	VM37.1	Side Stabilizer (not shown)	1
60	VM37	Rear Stabilizer (not shown)	1
61	80001	Serial Number Plate	1
62		Warning Label	1

# EXPLODED PARTS DIAGRAM



## REPLACEMENT PARTS

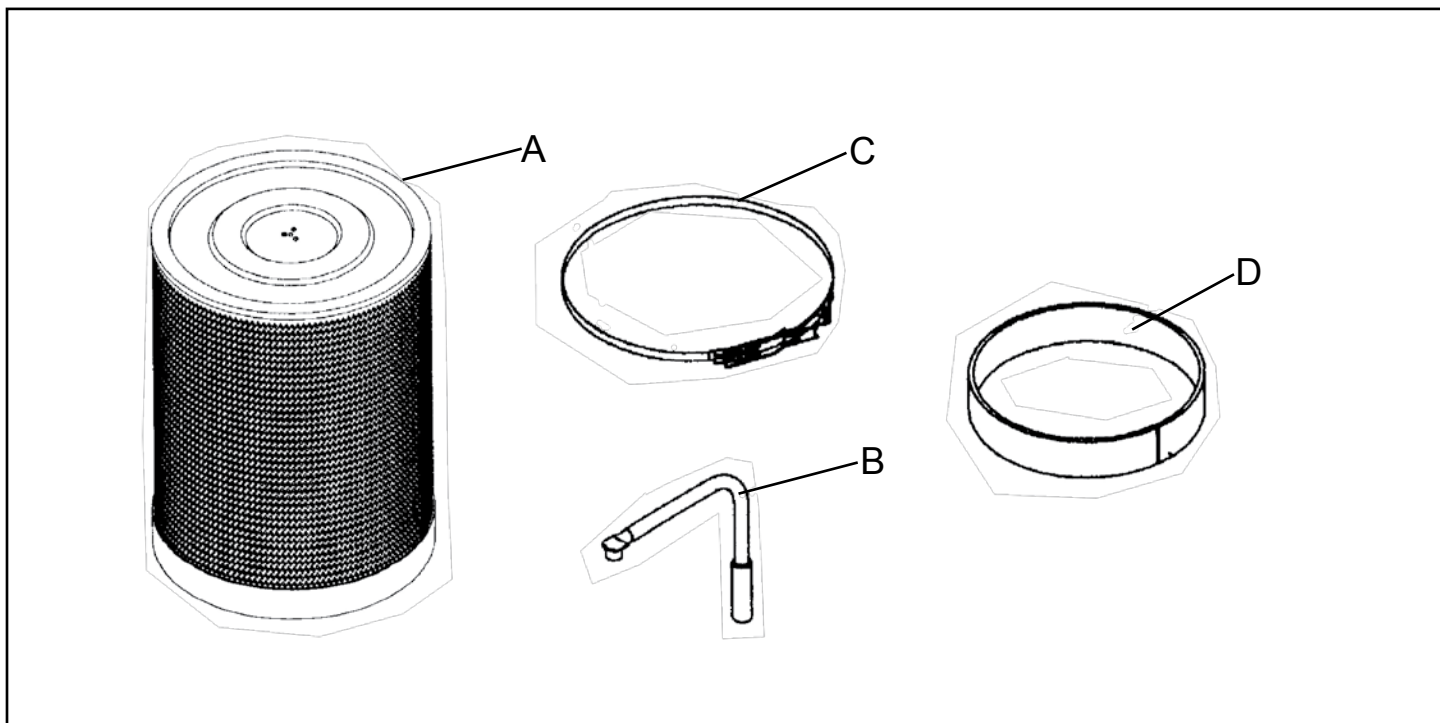


ILL #	PART #	DESCRIPTION
1	VM01	Caster Wheel
2	VM02	Wheel
3	VM03.1	Collection Bags, Set of 2 (one upper, one lower)
4	VM04	50' Vacuum Hose, black
5	VM05	50' Vacuum Hose, clear (not shown)
6	VM06	25' Intake Hose (not shown)
7	VM07	63" Band Clamp
8	VM08	5.5 HP Honda Engine
9	VM09	1" OD, .751" ID, 3/4" shoulder diameter, .62" thick spacer
10	VM10	1/8" x 3/8" pop rivet (not shown)
11	VM11	5/16-18 x 1-1/2" hex head bolt
12	VM12	5/16-24 x 1-1/4" hex head bolt grade 8
13	VM13	Blower Assembly with impellor, blower housing, and mounting bracket
14	VM14	Blower Assembly complete with 5.5 HP Honda Engine (incl. ILL # 13)
15	VM23	2micron Canister Filter
16	VM30	8 x 2 1/2 Solid Rubber Wheel
17	VM34	4" Stem Caster Wheel
18	VM37.2	Front Stabilizer Support Bracket
19	VM37.1	Side Stabilizer Support Bracket
20	VM37	Rear Stabilizer Support Bracket (not shown)
21	VM38	Base Stabilizer, Set of 2 Front & Rear
22	1068055	Tachometer (optional for gas engine)
23	SPSE-0120	Tachometer (required for electric engine)
24	FS2E-0100-2	2 HP Leeson Engine

## FILTER WITH CLEANER BAR

### UNPACKING CONTENT

Unpack carton; please check the contents per parts list below:



### PARTS LIST

- A. Canister Filter
- B. Cleaning Bar
- C. Belt Clamp
- D. Foam 4 x 20 x 1620mm (2)

## ASSEMBLY STEP

### Step 1

Mount the cleaning bar (B) on the top canister filter (A) by tightening the hex head screw M6 x 16mm (P/No.2). Please make sure the screw is locked tightly. Please see FIG. 1 and 2.

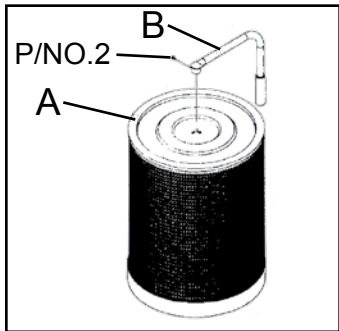


FIG. 1

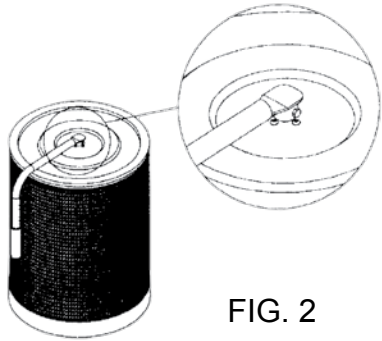


FIG. 2

### Step 2

Stick the Foam (D) on the top of collector. Please see figure 3.

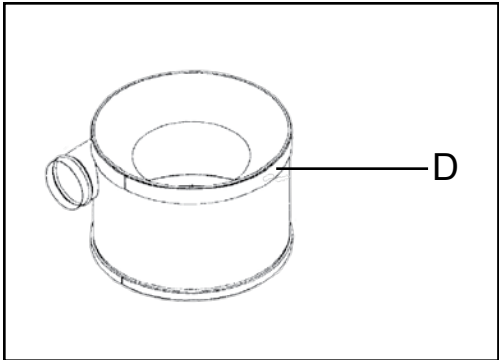


FIG. 3

### Step 3

Place the complete Canister Filter (A) on the top area of collector and use the belt clamp (C) to tighten. Please see figure 4.

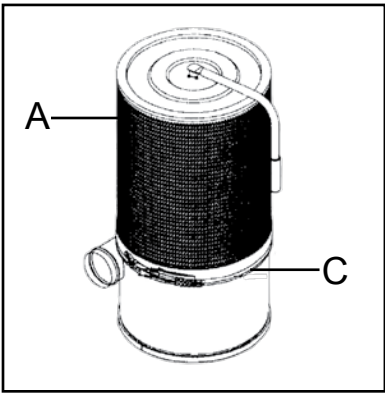


FIG. 4



## MAINTENANCE LOG

[illegible]

## WARRANTY CLAIMS

The manufacturer reserves the right to change or improve the machine design without assuming any obligation to update any products previously manufactured before this manual. It is the customer's responsibility to complete the warranty card and mail it to the seller within 10 days from the date of purchase. If a failure occurs during the warranty period, the customer must contact the seller to determine the appropriate action. Any and all transportation charges are to be borne by the purchaser.



## Limited Equipment Warranty

All statements, technical information and recommendations contained in SMITH's literature are based on tests believed to be reliable, but the accuracy or completeness thereof is not guaranteed and the following is made in lieu of all warranties, expressed or implied. SMITH warrants all equipment or part referenced in this document which is manufactured by SMITH and bearing its name to be free from defects in material and workmanship on the date of sale to the original purchaser under normal use and maintenance as herein provided. This warranty does not apply to components manufactured by others such as, but not limited to, bearings and engines; such components that may or may not have their own warranties.

With the exception of any special, extended, or limited warranty published by SMITH, SMITH will, for a period of three months (90 days) from the date of sale or up to five hundred (500) hours of use by buyer, whichever shall occur first; repair or replace any part of the equipment determined by SMITH to be defective. This warranty applies only when the equipment or part is installed, operated and maintained in accordance with SMITH's written recommendations.

SMITH's sole obligation for any breach of warranty or breach of contract for defects, deliberate or accidental omissions, shall be limited to repairing, replacing or allowing credit for, at SMITH's option, any part which, under normal and proper use and maintenance, proves defective in material or workmanship within warranty period, provided, however, that notice of any such defect or omission and satisfactory proof thereof is promptly given by buyer to SMITH, and thereafter, such defective part is returned to SMITH with transportation charges prepaid, and SMITH's examination proves such part to have been defective. This warranty does not obligate SMITH to bear any transportation charges or personnel time in connection with the replacement or repair of defective parts. This warranty does not obligate SMITH to bear any expense for travel time or of personnel in connection with any service calls. SMITH will not, in any event, be liable to the user for any consequential damages arising out of this sale for the loss of use, lost profits or revenue, interest, lost goodwill or work stoppage. SMITH shall not be liable for any injury, loss or damage, direct or consequential, arising out of the use or the inability to use the product or for environmental claims. It being understood that SMITH has no means of controlling the products final use; therefore, it shall be buyer's responsibility to determine suitability of product for intended use and buyer assumes all risks and liabilities whatsoever, in connection therewith. In no event shall SMITH be liable for consequential or special damages. Used products are sold on an "as is" basis, and there is no implied warranty of merchantability or of fitness for a particular purpose, unless made in writing by an officer at SMITH's office.

This warranty does not cover, and SMITH shall not be liable for general wear and tear, or any malfunction, damage or wear caused by faulty installation, misapplication, abrasion, corrosion, inadequate or improper maintenance, negligence, accident, tampering, or substitution of non-SMITH component parts. Nor shall SMITH be liable for malfunction, damage or wear caused by the incompatibility of SMITH equipment with structures, accessories, equipment or materials not supplied by SMITH, or the improper design, manufacture, installation, operation or maintenance of structures, accessories, equipment or materials not supplied by SMITH. This warranty does not apply in respect to damages to any product or accessory or attachment thereof caused by overloading or other misuse, neglect or accident, nor does this warranty apply to any product or accessory or attachment thereof, which has been repaired or altered in any way which, in the sole judgment of SMITH, affects the performance, stability or general purpose for which it was manufactured. In the manufacture of buyer's equipment, parts may be omitted or equivalent functioning equipment and components may be substituted for the original specified equipment upon the sole judgment and discretion of SMITH.

This warranty is conditioned upon the prepaid return of the equipment claimed to be defective to an authorized SMITH Reseller for verification of the claimed defect. If the claimed defect is verified, SMITH will repair or replace free of charge any defective parts and return of merchandise back to the customer freight collect. If inspection of the equipment does not disclose any defect in material or workmanship, repairs will be made at a reasonable charge, which charges may include the costs of parts, labor and transportation.

THIS WARRANTY IS EXCLUSIVE AND IS IN LIEU OF ANY OTHER WARRANTIES, EXPRESS OR IMPLIED, INCLUDING BUT NOT LIMITED TO WARRANTY OF MERCHANTABILITY OR WARRANTY OF FITNESS FOR A PARTICULAR PURPOSE.

SMITH's sole obligation and buyer's sole remedy for any breach of warranty shall be as set forth above. The buyer agrees that no other remedy (including, but not limited to, incidental or consequential damages for lost profits, lost sales, injury to person or property, or any other incidental or consequential loss) shall be available. Any action for breach of warranty must be brought within two (2) years of the date of sale.

SMITH MAKES NO WARRANTY, AND DISCLAIMS ALL IMPLIED WARRANTIES OF MERCHANTABILITY AND FITNESS FOR A PARTICULAR PURPOSE, IN CONNECTION WITH ACCESSORIES, EQUIPMENT, MATERIALS OR COMPONENTS SOLD BUT NOT MANUFACTURED BY SMITH.

These items sold, but not manufactured by SMITH (such as electric motors, switches, hose, etc.), are subject to the warranty, if any, of their manufacturer. SMITH will provide purchaser with reasonable assistance in making any claim for breach of these warranties. In no event will SMITH be liable for indirect, incidental, special or consequential damages resulting from SMITH supplying equipment hereunder, or the furnishing, performance, or use of any products or other goods sold hereto, whether due to a breach of contract, breach of warranty, the negligence of SMITH, or otherwise.

ADDITIONAL WARRANTY COVERAGE - SMITH does provide extended warranty and wear warranty for products.

Corrections - typographical or clerical errors contained herein are subject to correction by SMITH.

Assignment - buyer shall not assign or transfer this warranty without SMITH's written consent.

Entire agreement and applicable law - the rights and obligations of SMITH and buyer shall be governed by the laws of the state of Florida, U.S.A. In force on date hereof. The provisions hereof are intended by buyer and SMITH as a final expression of their agreement, and are intended also, as a complete and exclusive statement of all terms apply cable to buyer's order. No waiver, modification, or addition to any of the terms hereof shall be binding on SMITH, unless made in writing by an officer at SMITH's office as stated herein. In the event of conflict between buyer's purchase order and the terms hereof, the latter shall control. If any provisions herein are to any extent invalid or unenforceable, the remainder of the warranty shall not be effected thereby and shall be valid and enforceable to the fullest extent permitted by law.

Legal action - buyer shall be responsible for all costs of collection of outstanding indebtedness, including but not limited to attorney's fees and court costs to seller. Buyer shall reimburse seller for any and all litigation expenses seller incurs as a result of an unsuccessful buyer claim. The jurisdiction and venue of the court for any litigation, state or federal, brought by the buyer and/or seller shall be located in venue determined by seller.

Fair labor standards - seller's products are produced in the United States and in conformity with all applicable provisions of the fair labor standards act of 1938 as amended and any regulations and orders of the United States Department of Labor issued thereunder.

All written and visual data contained in this document reflects the most current product information available at the time of this publication. SMITH reserves the right to make changes at any time without notice.

TO ORDER, contact your SMITH distributor or call 1-800-653-9311 to identify the nearest distributor.

**SMITH Manufacturing Co, Inc.**  
1610 South Dixie Highway  
Pompano Beach, FL 33060  
www.smithmfg.com



SMITH Manufacturing 1-800-653-9311 www.SmithMfg.com



**PRE-OPERATION INSPECTION - WARRANTY ACTIVATION  
PRODUCT REGISTRATION**

Thank you for purchasing a SMITH. Please complete this form upon receipt of your equipment and prior to use on the job. A pre-operation inspection is required to activate your warranty. All sections must be completed. Should you have any questions, please add to the comments section below. Fax completed form to (954) 545-0348.

Organization \_\_\_\_\_

First Name \_\_\_\_\_ Last Name: \_\_\_\_\_

Job Function (Title) \_\_\_\_\_

Phone: \_\_\_\_\_ Email: \_\_\_\_\_

Address \_\_\_\_\_

City \_\_\_\_\_ State \_\_\_\_\_ Zip \_\_\_\_\_

SMITH Product **MV 5.5 or MV 2E** Machine Serial # \_\_\_\_\_

Date of Purchase (MM / DD / YYYY) \_\_\_\_\_ Purchased from \_\_\_\_\_

**PRE-OPERATION INSPECTION (PLEASE CHECK ALL)**

1. No parts or components on the machine appear damaged or lost in shipment. ☐ Yes ☐ No
2. All bolts and fasteners are in place and tightly secured. ☐ Yes ☐ No
3. Grease points have been identified for future maintenance requirements and appear lubricated. ☐ Yes ☐ No
4. Wheels are operational. ☐ Yes ☐ No
5. Motor has been started and in good working condition. ☐ Yes ☐ No
6. All Decals appear in place and securely attached. ☐ Yes ☐ No
7. Equipment runs and tested to assure all components are operating correctly. ☐ Yes ☐ No
8. Do you have a Wear Parts Kit with an Extra Cutter set in stock? ☐ Yes ☐ No
9. Did you join Remove Faster News for tech updates, experience sharing and special offers? ☐ Yes ☐ No

Comments (add any additional or from above answers below)

---

---

*Special offer for Wear Parts Kit and Carbide Cutter  
drum if purchased within 30 days after activation.*

Signature: \_\_\_\_\_





## **SMITH Manufacturing**

1610 South Dixie Highway  
Pompano Beach, FL, 33060

Toll Free: 800.653.9311

Phone: 954.941.9744

Fax: 954.545.0348

Email: [info@SmithMfg.com](mailto:info@SmithMfg.com)

Web: [\*\*www.SmithMfg.com\*\*](http://www.SmithMfg.com)

Authorized Distributor: