

User's Manual



802.11n Wireless Pocket Presentation Gateway

▶ WPG-130N



Copyright

Copyright © 2013 by PLANET Technology Corp. All rights reserved. No part of this publication may be reproduced, transmitted, transcribed, stored in a retrieval system, or translated into any language or computer language, in any form or by any means, electronic, mechanical, magnetic, optical, chemical, manual or otherwise, without the prior written permission of PLANET.

PLANET makes no representations or warranties, either expressed or implied, with respect to the contents hereof and specifically disclaims any warranties, merchantability or fitness for any particular purpose. Any software described in this manual is sold or licensed "as is". Should the programs prove defective following their purchase, the buyer (and not PLANET, its distributor, or its dealer) assumes the entire cost of all necessary servicing, repair, and any incidental or consequential damages resulting from any defect in the software. Further, PLANET reserves the right to revise this publication and to make changes from time to time in the contents hereof without obligation to notify any person of such revision or changes.

All brand and product names mentioned in this manual are trademarks and/or registered trademarks of their respective holders.

Federal Communication Commission Interference Statement

This equipment has been tested and found to comply with the limits for a Class B digital device, pursuant to Part 15 of FCC Rules. These limits are designed to provide reasonable protection against harmful interference in a residential installation. This equipment generates, uses, and can radiate radio frequency energy and, if not installed and used in accordance with the instructions, may cause harmful interference to radio communications. However, there is no guarantee that interference will not occur in a particular installation. If this equipment does cause harmful interference to radio or television reception, which can be determined by turning the equipment off and on, the user is encouraged to try to correct the interference by one or more of the following measures:

1. Reorient or relocate the receiving antenna.
2. Increase the separation between the equipment and receiver.
3. Connect the equipment into an outlet on a circuit different from that to which the receiver is connected.
4. Consult the dealer or an experienced radio technician for help.

FCC Caution

To assure continued compliance. (Example - use only shielded interface cables when connecting to computer or peripheral devices). Any changes or modifications not expressly approved by the party responsible for compliance could void the user's authority to operate the equipment.

This device complies with Part 15 of the FCC Rules. Operation is subject to the Following two conditions: (1) This device may not cause harmful interference, and (2) this Device must accept any interference received, including interference that may cause undesired operation.

Federal Communication Commission (FCC) Radiation Exposure Statement

This equipment complies with FCC radiation exposure set forth for an uncontrolled environment. In order to avoid the possibility of exceeding the FCC radio frequency exposure limits, human proximity to the antenna shall not be less than 20 cm (8 inches) during normal operation.

CE mark Warning

This is a class B device, in a domestic environment; this product may cause radio interference, in which case the user may be required to take adequate measures.

R&TTE Compliance Statement

This equipment complies with all the requirements of DIRECTIVE 1999/5/CE OF THE EUROPEAN PARLIAMENT AND THE COUNCIL OF 9 March 1999 on radio equipment and telecommunication terminal Equipment and the mutual recognition of their conformity (R&TTE). The R&TTE Directive repeals and replaces in the directive 98/13/EEC (Telecommunications Terminal Equipment and Satellite Earth Station Equipment) As of April 8, 2000.

Safety

This equipment is designed with the utmost care for the safety of those who install and use it. However, special attention must be paid to the dangers of electric shock and static electricity when working with electrical equipment. All guidelines of this and of the computer manufacture must therefore be allowed at all times to ensure the safe use of the equipment.

EU Countries Intended for Use

The ETSI version of this device is intended for home and office use in Austria Belgium, Denmark, Finland, and France (with Frequency channel restrictions). Germany, Greece, Ireland, Italy, Luxembourg .The Netherlands, Portugal, Spain, Sweden and United Kingdom.

The ETSI version of this device is also authorized for use in EFTA member states Iceland, Liechtenstein, Norway and Switzerland.

WEEE regulation



To avoid the potential effects on the environment and human health as a result of the presence of hazardous substances in electrical and electronic equipment, end users of electrical and electronic equipment should understand the meaning of the crossed-out wheeled bin symbol. Do not dispose of WEEE as unsorted municipal waste and have to collect such WEEE separately.

Revision

User Manual for PLANET 802.11n Pocket Presentation Gateway

Model: WPG-130N

Version: 2

Rev: 2.1 (January, 2013) (2081-E60050-001)

Contents

Chapter 1.PRODUCT INTRODUCTION	6
1.1 Package Contents	6
1.2 Product Description	7
1.3 Product Features	9
1.4 Product Specification	10
Chapter 2.HARDWARE INSTALLATION	12
2.1 Hardware Description	12
2.1.1 The Front Panel	12
2.1.2 LED Indications	12
2.1.3 The Rear Panel	13
2.1.4 The Top Side	13
2.2 Hardware Connection	13
Chapter 3.WINDOWS CLIENT UTILITY–WPG	16
3.1 Starting Program	16
3.2 Control Panel	17
3.2.1 Show Login Code.....	18
3.2.2 Web Admin.....	18
3.2.3 Search Server	19
3.2.4 Projection Quality.....	20
3.2.5 Projection Source.....	20
3.2.6 Auto WiFi Connect.....	22
3.2.7 Auto Power Manager	22
3.2.8 Hide UI	23
3.2.9 Advanced Screen Capture.....	23
3.2.10 Make WPG Token	24
3.2.11 Copy Application to Desktop	26
3.2.12. Hot Key	27
3.2.13. About.....	27
3.2.14. Exit	28
Chapter 4.MAC OS X CLIENT UTILITY	29
4.1. Mac OS X Quick Connection	29
4.2. Download Mac OS X Client Utility	31
Chapter 5.WEB UI MANAGEMENT	34
5.1. WPG-130N Homepage.....	34
5.2. Download	35
5.3. Admin	36
5.3.1 System Status	37
5.3.2 Network Setup	38
5.3.3 OSD Setup.....	42
5.3.4 Projection Setup.....	43
5.3.5 Change Passwords.....	43

5.3.6	Reset to Default	44
5.3.7	Firmware Upgrade	45
5.3.8	Reboot System	46
Appendix A: Configuring the PCs		47
Appendix B: FAQ		51

Chapter 1. PRODUCT INTRODUCTION

1.1 Package Contents

Thank you for choosing PLANET WPG-130N – the 802.11n Wireless Pocket Presentation Gateway.
Before installing the router, please verify the contents inside the package box.

■ WPG-130N × 1



■ 5V DC Power adapter × 1



■ World-Wide Plug Set × 1



■ VGA Adapter



■ CD-ROM × 1



■ Quick Installation Guide × 1



Note

If there is any item missed or damaged, please contact the seller immediately.

1.2 Product Description



Deliver High Smoothness Presentations Wirelessly

PLANET WPG-130N is a wireless presentation gateway based on **IEEE 802.11n** technology. It is equipped with a **VGA** video output interface. With the hardware decoding capability, WPG-130N can project high-definition video on the screen through wireless connection. It facilitates multiple users to freely display the presentations, images and videos wirelessly, and connect to a projector or LCD TV without swapping lots of cables.



High Speed 802.11n Wireless Connectivity

The WPG-130N features the latest IEEE 802.11n technology to provide improved wireless speed up to 150Mbps data rate and wider coverage. It is also backward compliant with 802.11g and 802.11b standards; thus it is totally unnecessary to change the existing network for maintaining connectivity.

4-to-1 Split Screen Projection

With this 4-to-1 split screen feature, WPG-130N supports up to four PC / Laptop screens can be projected to one projector in the same time. Thus the participants can easily do side-by-side comparison from four PC / Laptop to increase meeting efficiency.



Pocket-size Design and Power over VGA (PoVGA)

PLANET WPG-130N is a pocket-size wireless presentation gateway with the dimension 92.3 x 40 x 22 mm and the weight 52g. The compact design of WPG-130N is convenient to connect with any projector and hidden very well once it is plugged into the VGA port of the projector. Furthermore, the WPG-130N supports PoVGA (Power over VGA). It could be power supplied from the VGA connector of the compatible projectors. Even the last cable on the device, the power cord, will also become unnecessary.



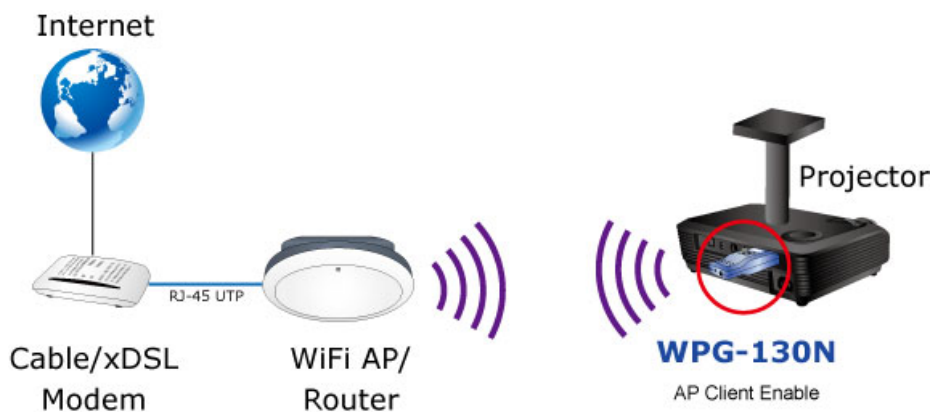
Easy to Use, Plug & Show

The connected users can directly download the embedded windows-based utility from the WPG-130N web UI or simply execute the utility from created USB token. It offers the most convenient way for the new user to make the presentation in seconds. Just link the PC / Laptop to WPG-130N wirelessly and the screen will be projected to the connected projector easily.



AP Client Mode

You can enable the AP Client Mode function to make WPG-130N join the existing Access Point through Wi-Fi. This feature provides the flexibility of wireless network deployment in enterprise environment. The participants in the meeting can enjoy surfing the Internet and access Intranet all the time, even while wireless presentations are projecting.



1.3 Product Features

- Wirelessly Project Multimedia with Laptops and Macs
- Up to 30FPS Network Screen Projection
- Pocket Size, Easy Placement
- 4-to-1 Split Screen Projection
- 802.11n WiFi AP-and AP client modes
- Plug & Show
- Supports PoVGA (Power over VGA)
- Web Browser Management
- Windows XP / Vista / 7, Mac OS X support
- Multiple Users Access

1.4 Product Specification

Product	WPG-130N	
Hardware Specification		
Interfaces	Video	VGA Port: D-Sub 15-Pin female port
	WLAN	802.11n 150Mbps
Antenna	Gain	2dBi Dual PIFA Antenna
LED Indicator	Power	
Material	Plastic	
Dimension (W x D x H)	92.3 x 40 x 22 mm	
Weight	52g	
Power	External Power adaptor 5V DC input 1.2A Supports PoVGA (Power over VGA)	
Compatible Projectors with PoVGA supported	Optoma EX542	
	Optoma EX612	
	Optoma EX615	
	Optoma EX762	
	Optoma EH1020	
Wireless Interface Specification		
Standard	Compliance with IEEE 802.11n Backward compatible with IEEE 802.11b/g	
Frequency Band	2.4~2.4835 GHz	
Wireless Data Rate	Up to 150Mbps	
Wireless channel	America/ FCC: 2.414~2.462GHz (11 Channels) Europe/ ETSI: 2.412~2.472GHz (13 Channels) Japan/ TELEC: 2.412~2.484GHz (14 Channels)	
Wireless Output Power	802.11b: 16 dBm +/-1.5dBm (11Mbps) 802.11g: 14 dBm +/-1.5dBm (54Mbps) 802.11n: 13 dBm +/-1.5dBm (HT 20 MCS7)	
Receive Sensitivity	802.11b: 11M -76 dBm 802.11g: 54M -67dBm 802.11n: 65M HT20 -64dBm 150M HT40 -61dBm	
Wireless Security	IEEE Standard 64/128 bit WEP/WPA/WPA2-PSK	
Operation Mode	AP (Access Point) AP-Client (Universal Repeater)	
Video Display		
Supported PC / Laptop Resolution	SVGA (800x600) / XGA (1024x768) SXGA (1280x1024) / WXGA (1280x768) WSXGA (1440x900, 1600x1024) / UXGA (1600x1200) WUXGA (1920x1200) / QXGA (2048x1536) / Others	
Supported Output Resolution	VGA: SVGA (800x600) / XGA (1024x768) / WXGA(1280x768) / WXGA+(1280x800)	

System Management	
Protocol	TCP/IP
IP configuration	Automatic: DHCP Manual: Static IP address
Management:	Web-based configuration
Supported Windows Account Right	Administrators Limited User Guest
Supported Operation System	Windows XP/Vista/7 Windows Mobile 5/6 Mac OS X 10.4 or later
Standard Conformance	
IEEE Standards	IEEE 802.11n (1T1R, up to 150Mbps) IEEE 802.11g IEEE 802.11b IEEE 802.3 10Base-T IEEE 802.3u 100Base-TX
Environment	
Temperature	Operating: 0 ~ 40 Degree C Storage: -10 ~ 60 Degree C
Humidity	Operating: 10 ~ 90% (Non-Condensing) Storage: 10 ~ 80% (Non-Condensing)

Chapter 2. HARDWARE INSTALLATION

Please follow the instructions below to build the wireless network connection between WPG-130N, display equipment and your computers.

2.1 Hardware Description

2.1.1 The Front Panel

The front panel provides a simple interface monitoring the wireless presentation gateway. Figure 2-1 shows the front panel of WPG-130N.

Front Panel



Figure 2-1 The WPG-130N Front Panel

To Reset the WPG-130N to factory default:

1. **Press and hold the button**, and then plug in the DC jack of the AC adapter to power on WPG-130N. After 10~15 seconds, you can release the button. The WPG-130N will back to the factory default mode.
2. Be sure that you backup the current configuration of WPG-130N; else the entire configuration will be erased when pressing the "RESET" button.



Notice:

2.1.2 LED Indications

The front panel LED indicates instant status of system power; and helps monitor and troubleshoot when needed. Below table show the LED indications of the Pocket Presentation Gateway.

LED	Description
Green	Power On
Red	Device initializing or system error
Off	Power Off

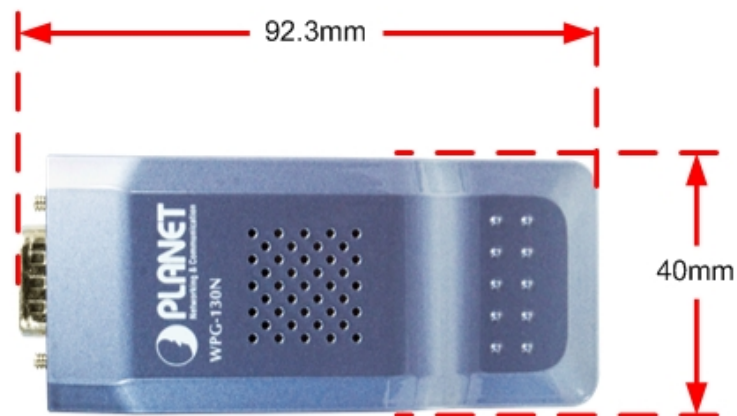
2.1.3 The Rear Panel

Rear Panel



Figure 2-2 The WPG-130N Rear Panel

2.1.4 The Top Side



2.2 Hardware Connection

Step 1. Please turn on your projector first, and connect the WPG-130N to the projector. Now you can power on WPG-130N.



Figure 2-3 VGA Interface Connection

Step 2. When the projector shows the default screen as below, it indicates WPG-130N is ready now.



Figure 2-4 Projector Default Screen



Note

If the screen is out of range, please turn off the projector or monitor first. Then turn on the projector or monitor again to reset the configuration.

Step 3. User your laptop or desktop to site survey the wireless signal of WPG-130N, and connect your PC with it wirelessly. The default SSID is **WPG-130N**.

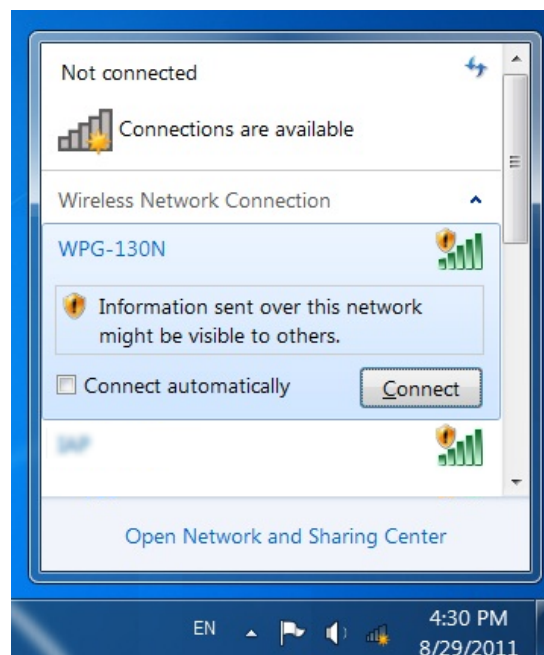


Figure 2-5 Windows 7 Platform Wireless Site Survey

Step 4. Open the web browser and it will redirect to WPG-130N web page automatically, or you can enter the default IP address **192.168.1.1** to access it.

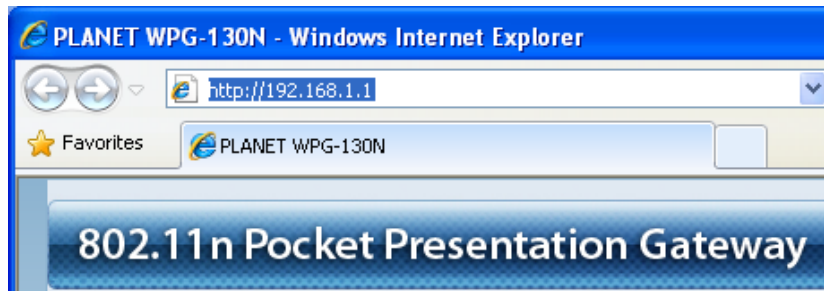
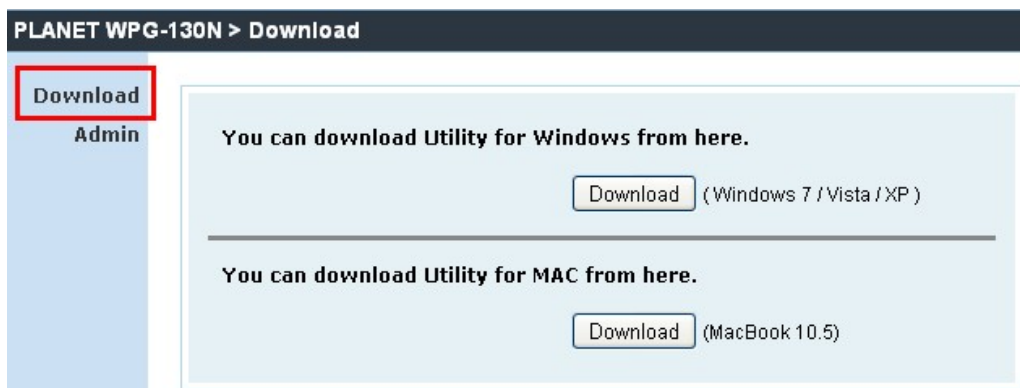


Figure 2-6 WPG-130N Web UI Screenshot


Now you can configure the WPG-130N and download the client utility (WPG) of Windows 7/Vista/XP or Mac OS X via web UI. For further information of the configurations, please refer to the following chapters.



Chapter 3. WINDOWS CLIENT UTILITY–WPG

3.1 Starting Program

After installing **WPG (Wireless Presentation Gateway)** utility downloaded from the web page of WPG-130N, please follow the steps below to start.

Step 1. Click WPG icon  on the desktop to execute the program.

Step 2. WPG will start to search the available access points automatically if you have not connected your PC to WPG-130N manually. When the WPG-130N is displayed in the list, please click it to connect and then enter the Login Code shown on the projector screen.

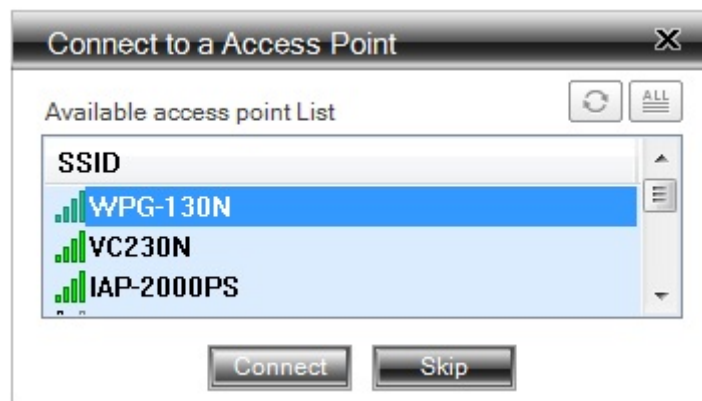


Figure 3-1 WPG Utility – Access Point Connection



Figure 3-2 WPG Utility – Access Point Login

Step 3. Click the  button to start projection



Figure 3-3 WPG Utility – Control Panel

3.2 Control Panel

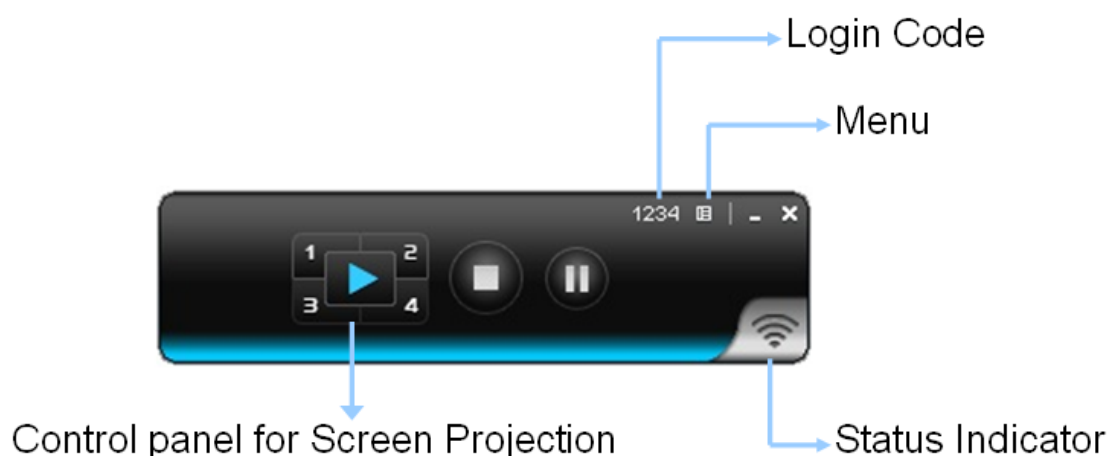









Figure 3-4 WPG Utility – Control Panel Function Introduction

Button	Description	Button	Description
	Start Full Screen Projection		Project to Split No. 4
	Project to Split No. 1		Stop projecting
	Project to Split No. 2		Freeze The Projection Screen
	Project to Split No. 3		

Please refer to the following sections for detailed instructions of the menu.

3.2.1 Show Login Code

Click “**Show Login Code**”, and the login code will be displayed on the left-upper of the desktop and disappeared automatically after 10 seconds. You can also click on the area to close this window manually.

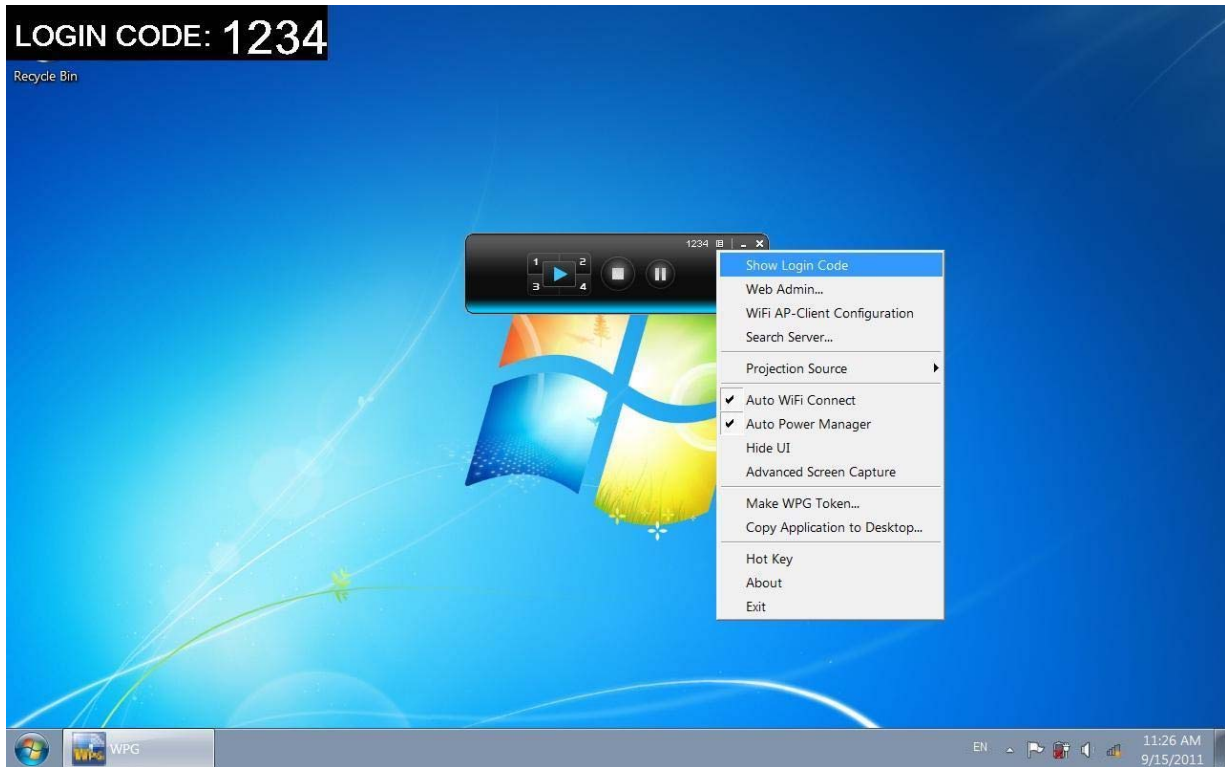


Figure 3-5 WPG Utility – Show Login Code

3.2.2 Web Admin

Click “**Web Admin**” to open the web UI page of WPG-130N. With regard to the web management UI page, please refer to the next chapter.

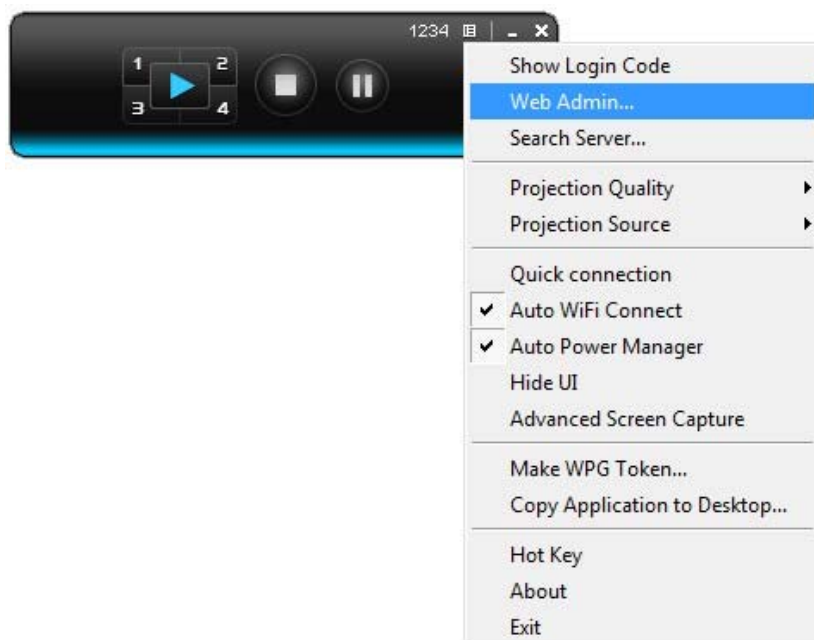


Figure 3-6 WPG Utility – Web Admin



Figure 3-7

3.2.3 Search Server

Click “**Search Server**” to re-search the wireless signal of WPG-130N again.

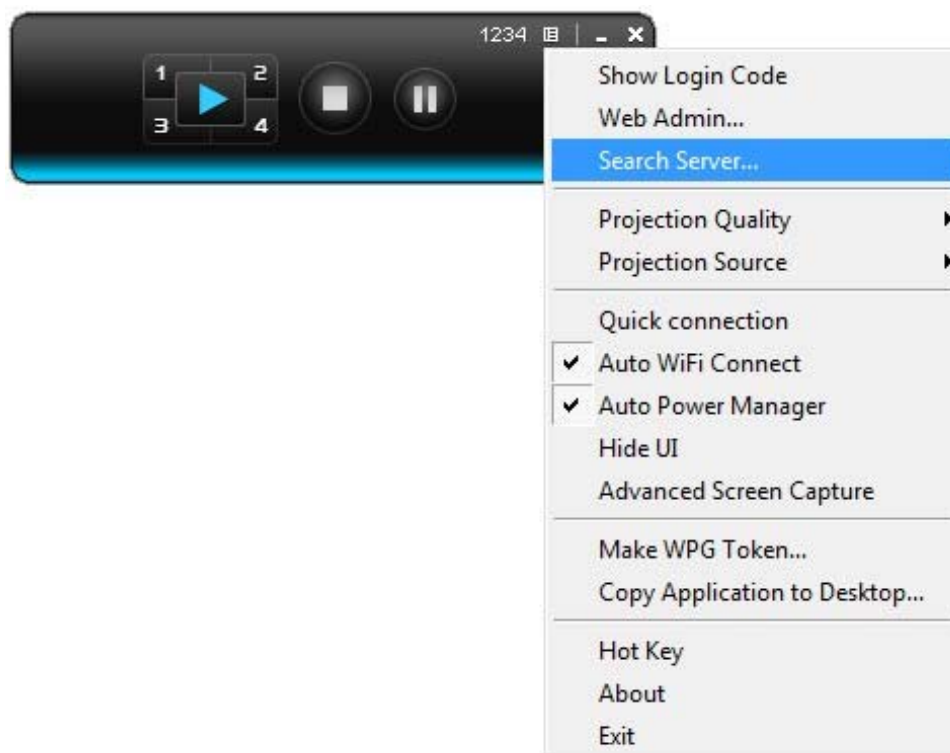


Figure 3-8 WPG Utility – Search Server

3.2.4 Projection Quality

Click the “**Projection Quality**”, choose “**Normal**” for faster projection speed with lower screen image quality, and “**Best**” for clear screen image quality but slower projection speed.

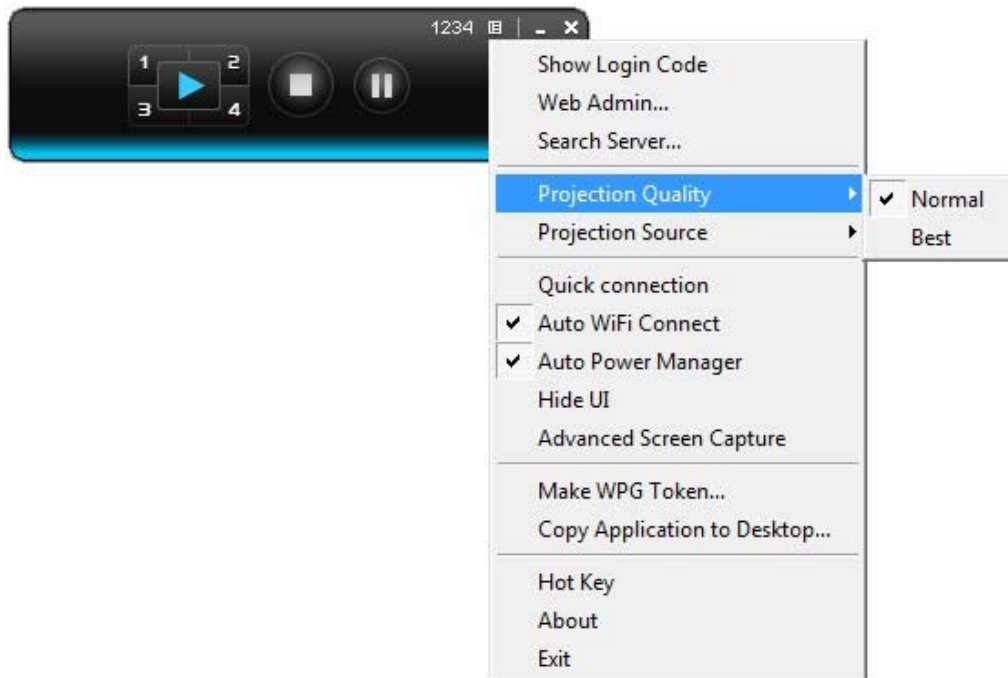


Figure 3-9 WPG Utility – Projection Quality

3.2.5 Projection Source

After clicking the “**Projection Source**”, you can select to project the main screen of the desktop or the virtual extended screen.

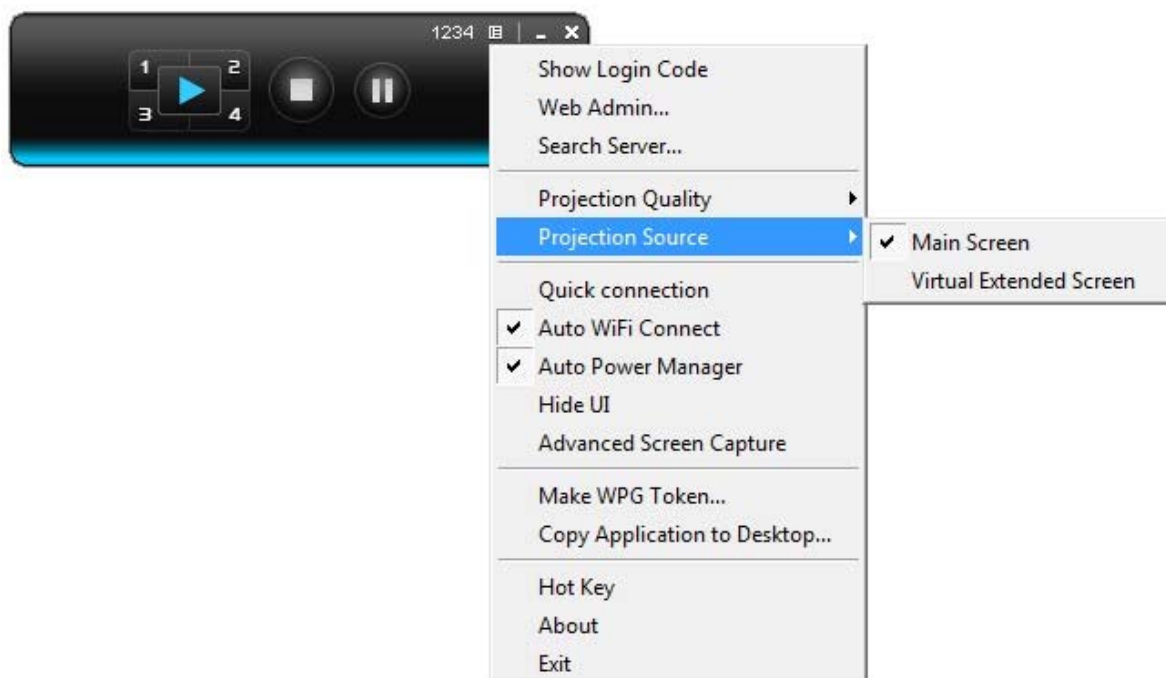


Figure 3-10 WPG Utility – Projection Source

Main Screen	When “ Main Screen ” is selected, WPG-130N will project out the main desktop screen.
Virtual Extended Screen	When “ Virtual Extended Screen ” is selected, WPG-130N will project out the virtual screen. The virtual second monitor is invisible, but it is just right of the main one. Just pull the presentation item out of right side screen, and you’ll see it appears on the projector screen.

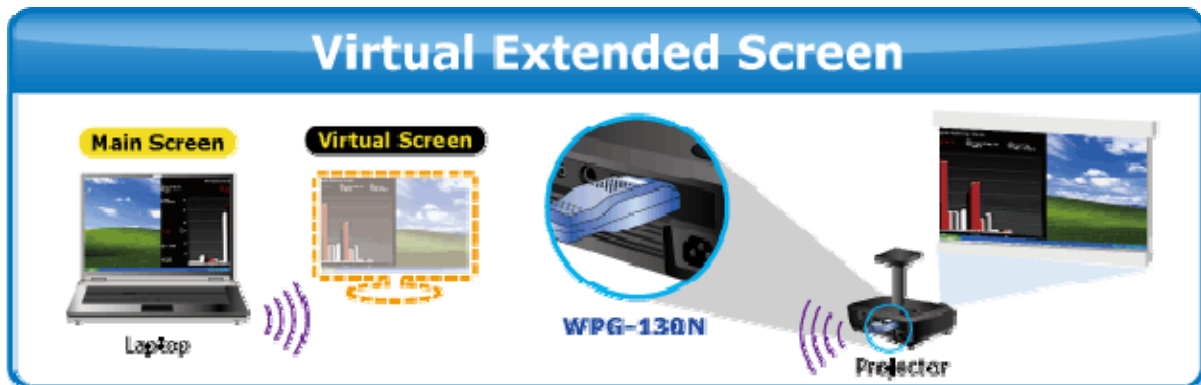


Figure 3-11 Virtual Extended Screen

Before starting the Virtual Extended Screen projection, please install the “**VDD.exe**” (Virtual Display Driver) first on your Windows XP computer. Please find the software in the CD-ROM.

If the screen below appears during the installation of VDD in Windows XP, please click “Continue Anyway” button to continue.



Figure 3-12

3.2.6 Auto WiFi Connect

Click “**Auto WiFi Connect**” to enable the auto WiFi discovery and connection function for quick wireless connection established.

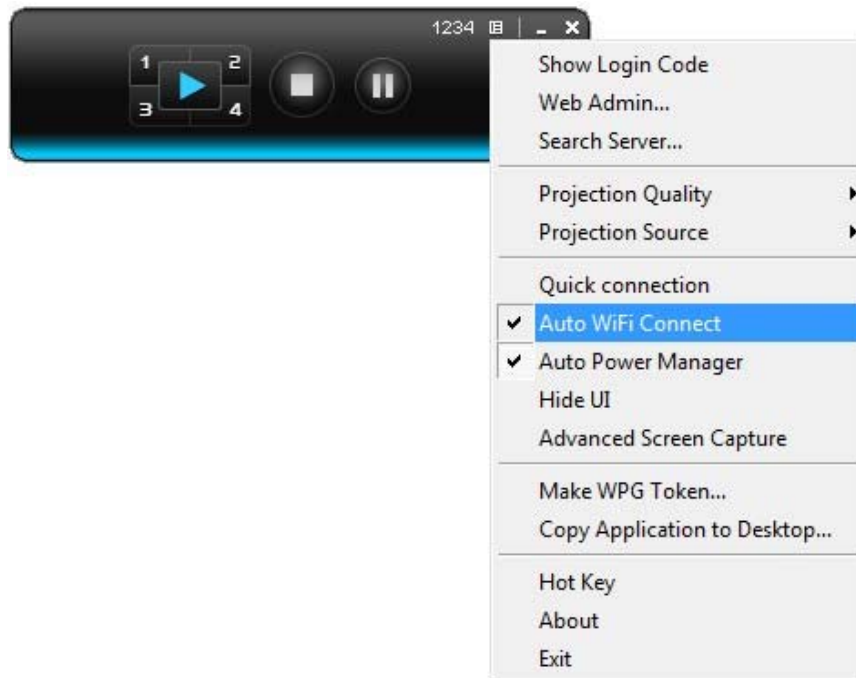


Figure 3-13 WPG Utility – Auto WiFi Connect

3.2.7 Auto Power Manager

If “**Auto Power Manager**” is enabled, WPG will turn the Windows Power Scheme from current settings to “**High Performance**” for getting the highest projection performance. However, you can still click it again to disable this function, and restore your power scheme immediately.

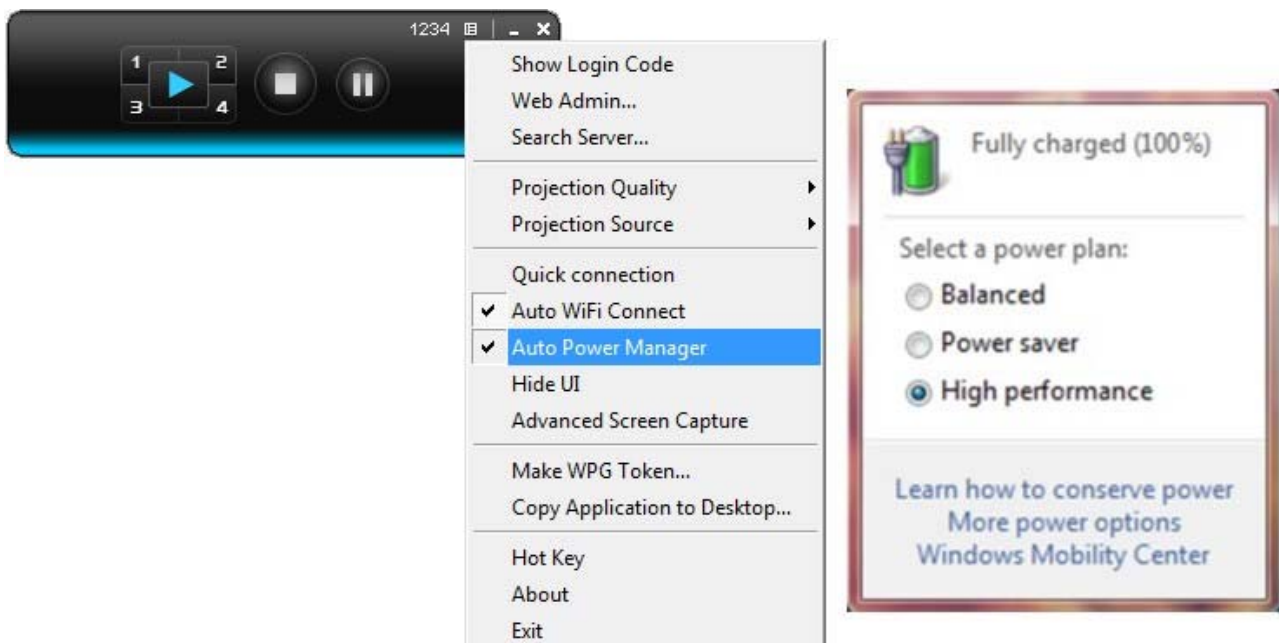


Figure 3-14 WPG Utility – Auto Power Manager

3.2.8 Hide UI

You can click “**Hide UI**” to hide the WPG control panel from projection screen.

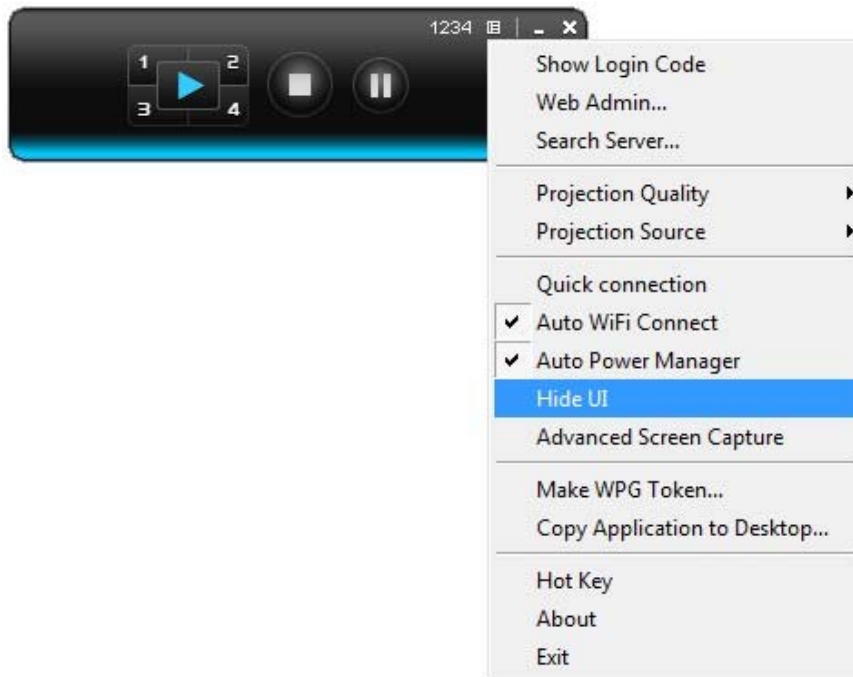


Figure 3-15 WPG Utility – Hide UI

3.2.9 Advanced Screen Capture

If you enable “**Advanced Screen Capture**”, all the tip windows and other layered windows (include the main UI) will be projected to the projector screen. However, the mouse cursor may blink from time to time when it is projecting.

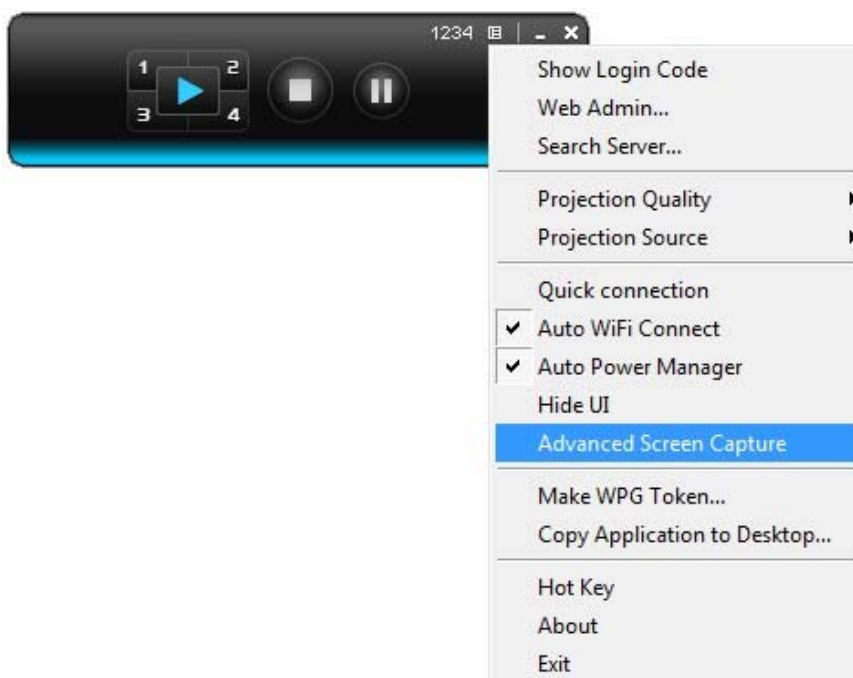
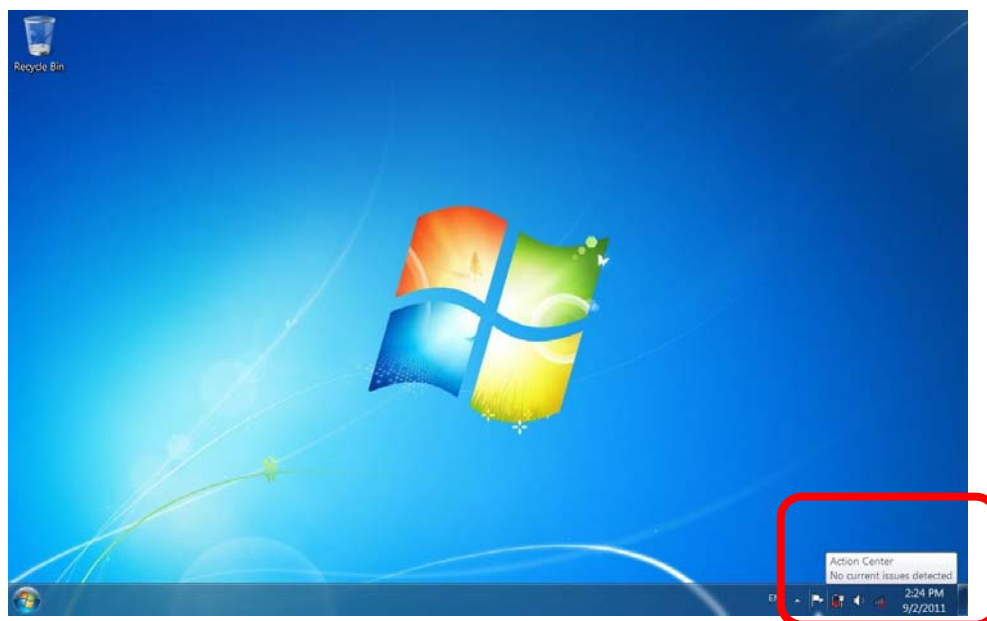
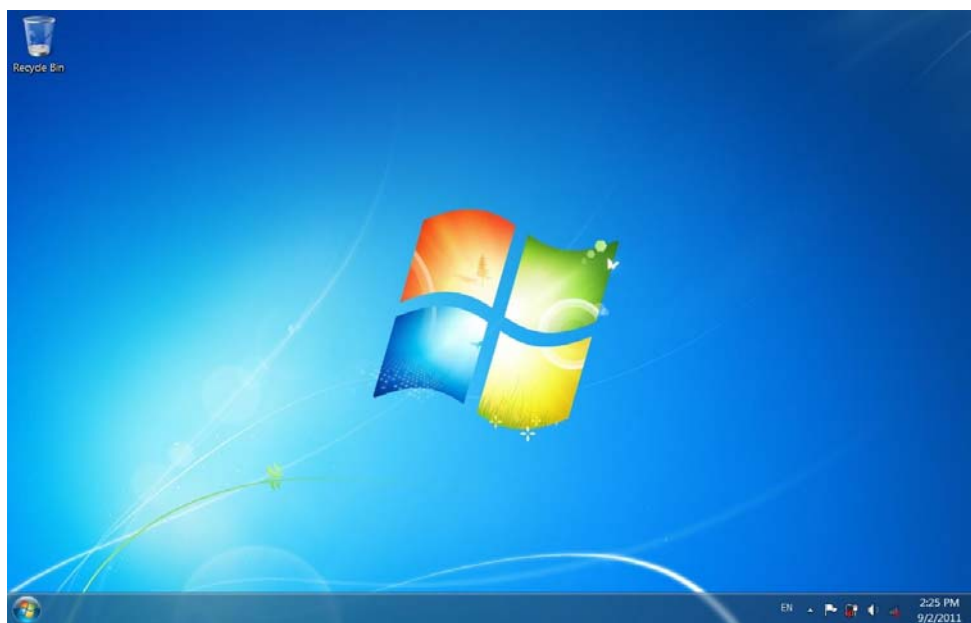


Figure 3-16 WPG Utility – Advanced Screen Capture



The Source Screen with Tip Window



The Projector Screen without Tip Window

Figure 3-17

3.2.10 Make WPG Token

Click "**Make WPG Token**" to make a USB WPG Token, then you can insert the USB drive to any PC you want to make a presentation without installing any driver. Follow the instructions below to make the WPG Token.

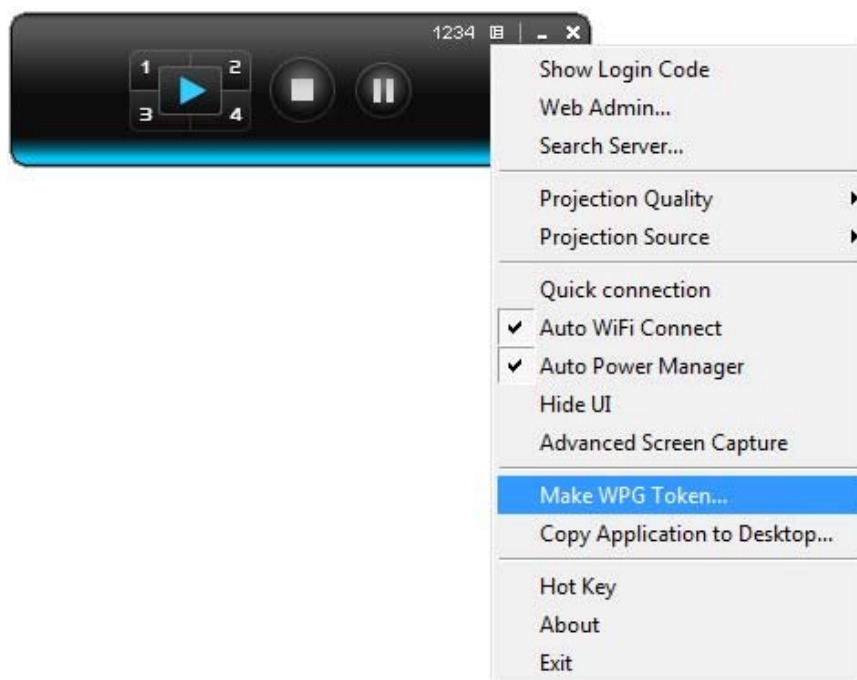


Figure 3-18 WPG Utility – Make WPG Token

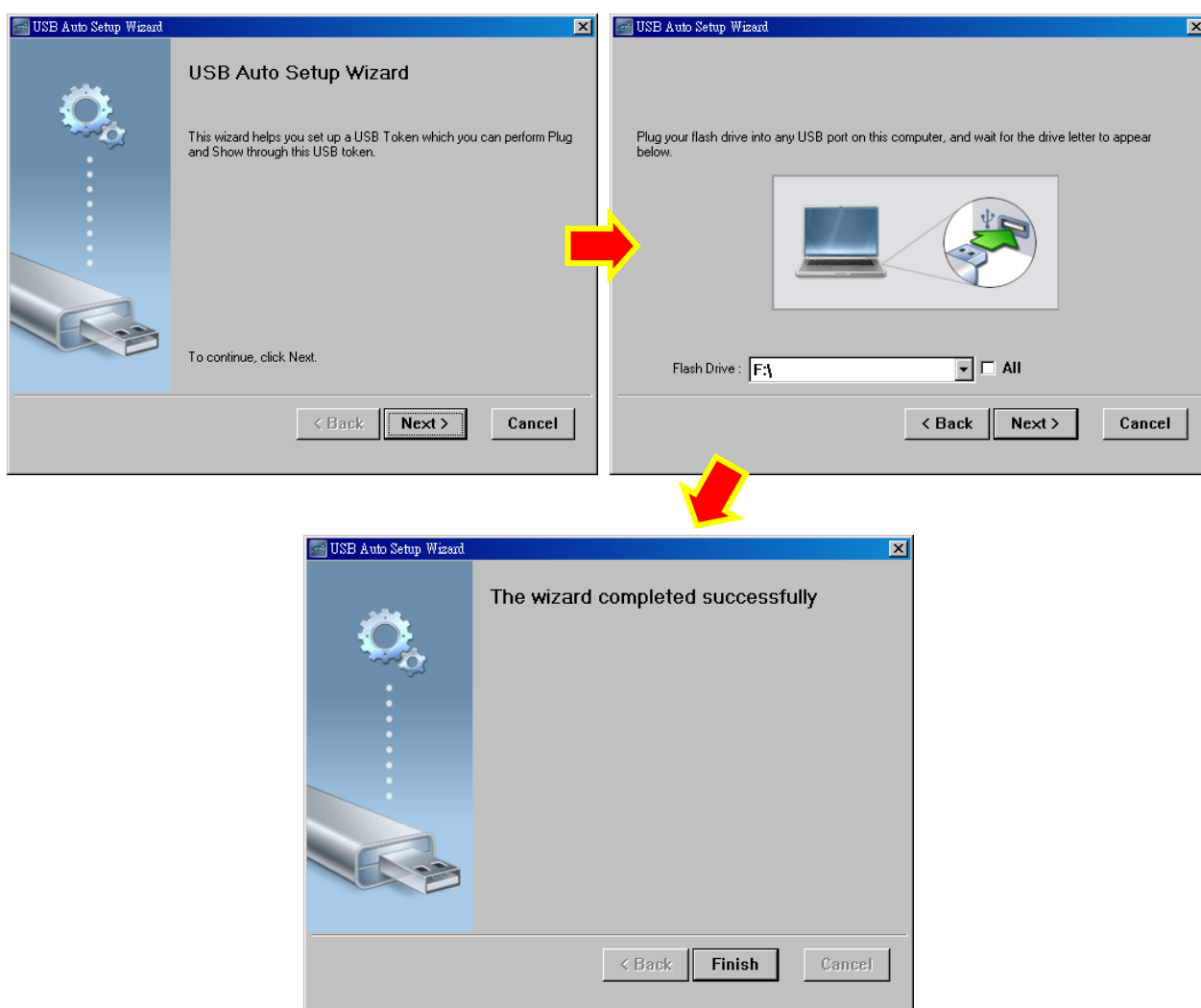


Figure 3-19

3.2.11 Copy Application to Desktop

Click the “Copy Application to desktop”, then it will copy the WPG Utility to your desktop immediately even you don’t have the system privilege.

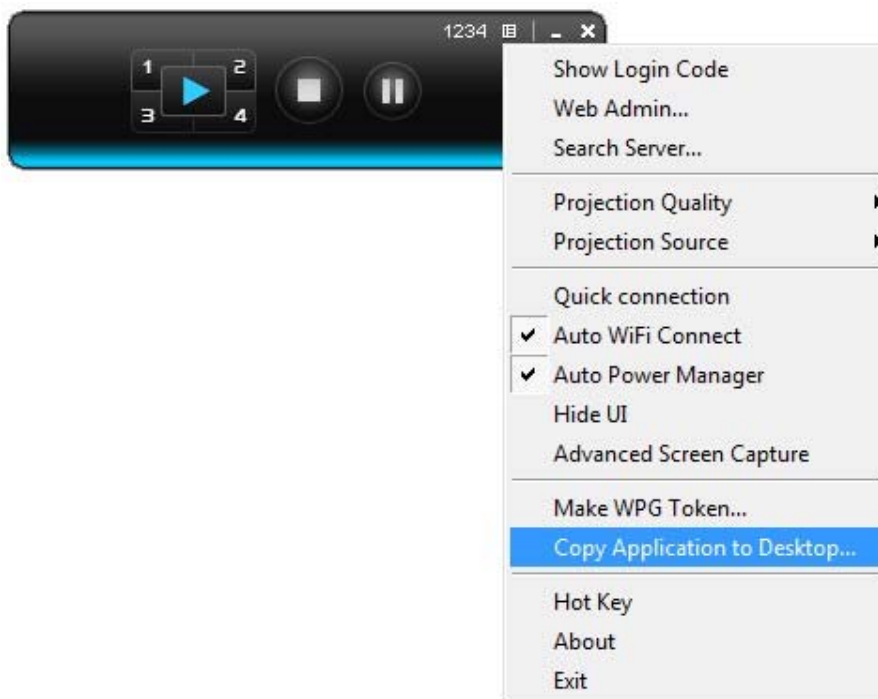


Figure 3-20 WPG Utility – Copy Application to Desktop



Figure 3-21 WPG Application to Desktop

3.2.12. Hot Key

Click “**Hot Key**” to show the guide of hot key. You can use the hot key to control the projection by keyboard.

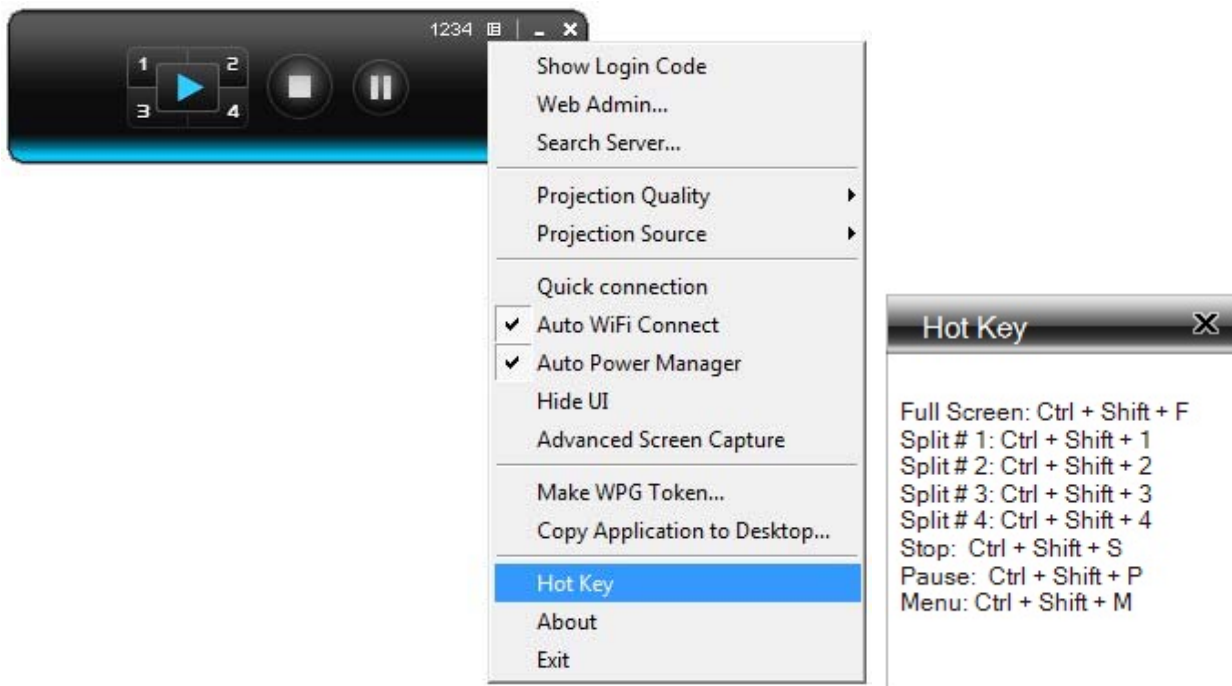


Figure 3-21 WPG Utility – Hot Key

3.2.13. About

Click “**About**” to show the system information. It includes the client version, server IP address, and login code.

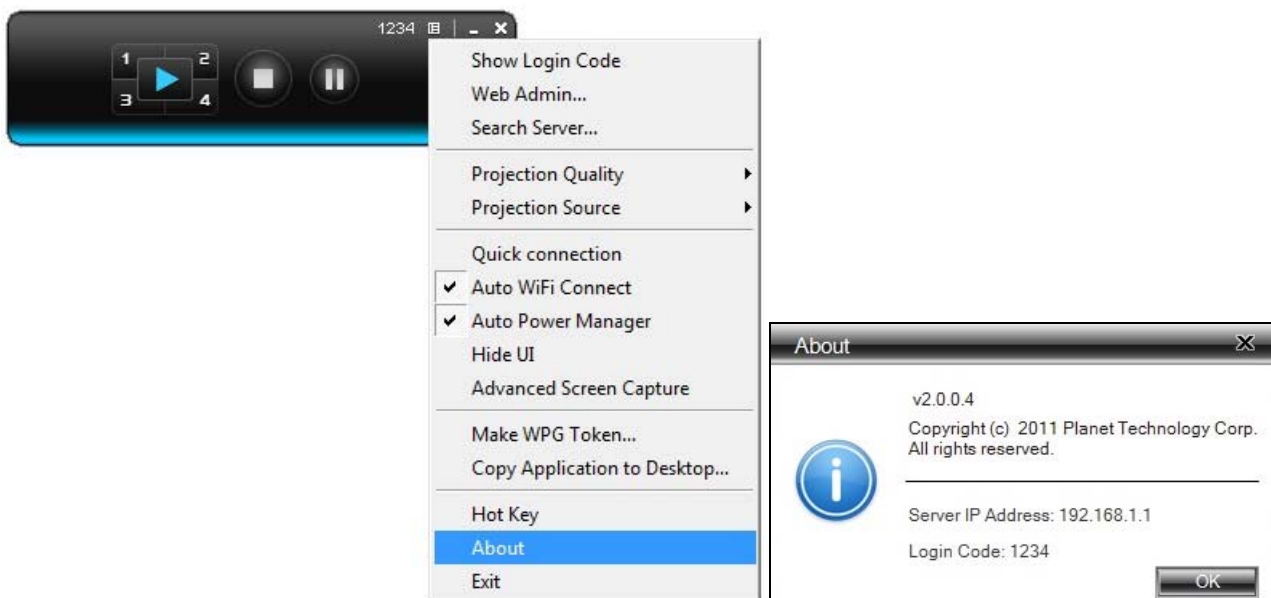


Figure 3-22 WPG Utility - About

3.2.14. Exit

Click “Exit” to exit the WPG utility. It will stop the current projection and close the application immediately.

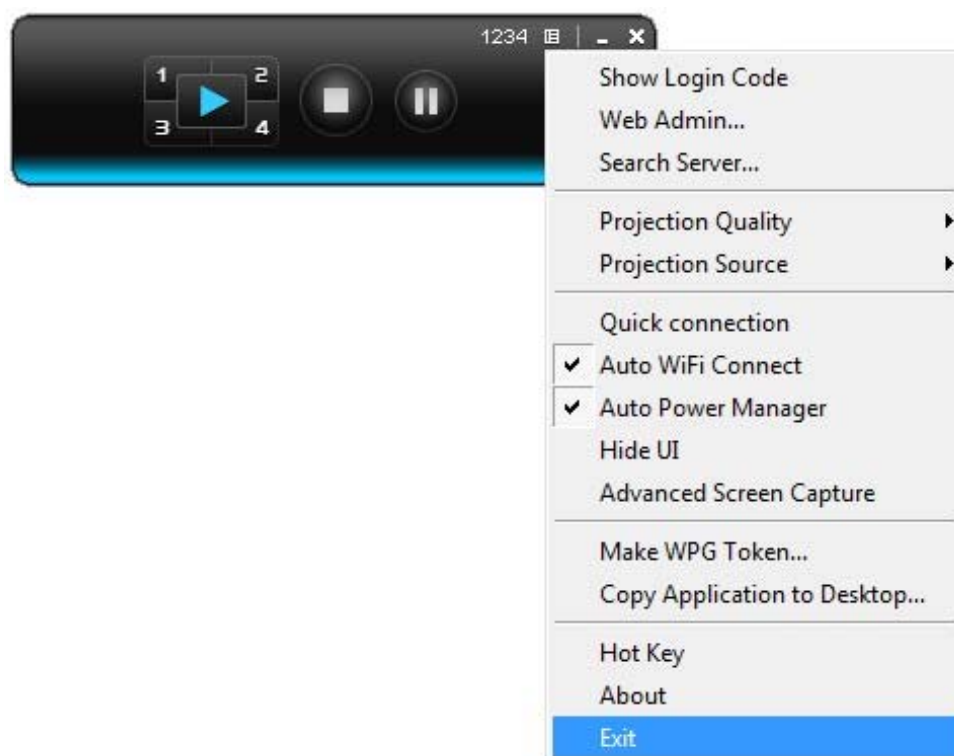


Figure 3-23

Chapter 4. MAC OS X CLIENT UTILITY

4.1. Mac OS X Quick Connection

Step 1: Right-Click on the **network icon** displayed in the system tray

The AirPort Network Connection menu will appear



Figure 4-1

Step 2: Highlight and select the wireless network (SSID) to connect

- (1) Select and SSID [**WPG-130N**]
- (2) Double-click on the selected SSID

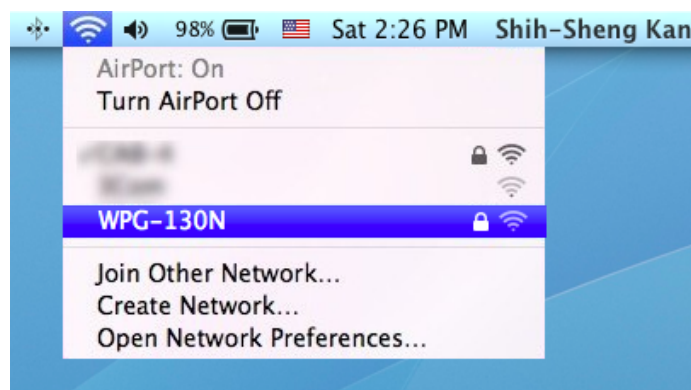


Figure 4-2

Step 3: Enter the **encryption key** of the WPG-130N

- (1) Enter the encryption key that configured in [section 5.4.2](#)
- (1) Click the [**Join**] button

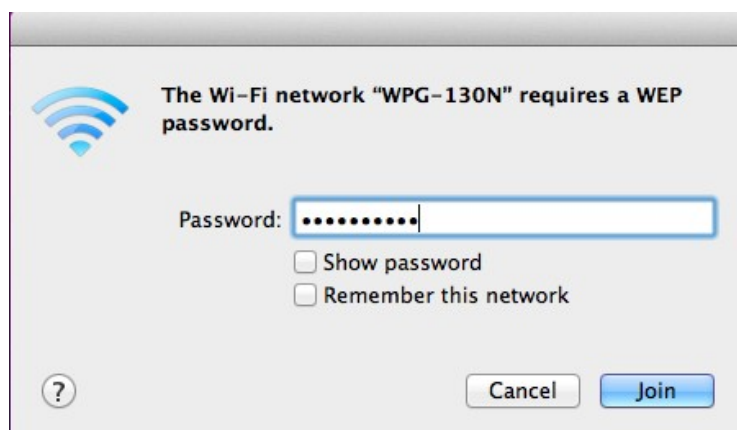


Figure 4-3



Note

If you will connect this WPG-130N in the future, check [**Remember this network**].

Step 4: Check if the AirPort is connect to the selected wireless network.

If “Yes”, then there will be a “check” symbol in the front of the SSID.

Step 5: Open the web browser and it will redirect to WPG-130N home page automatically. Or you can enter the default IP address <http://192.168.1.1> to access it.



Figure 4-4

After a moment, the main screen appears as Figure 4-5



Figure 4-5

4.2. Download Mac OS X Client Utility

Step 1. : Click “Download”.

Step 2. : Choose the utility for “MAC”, then click **Download** button to download utility.

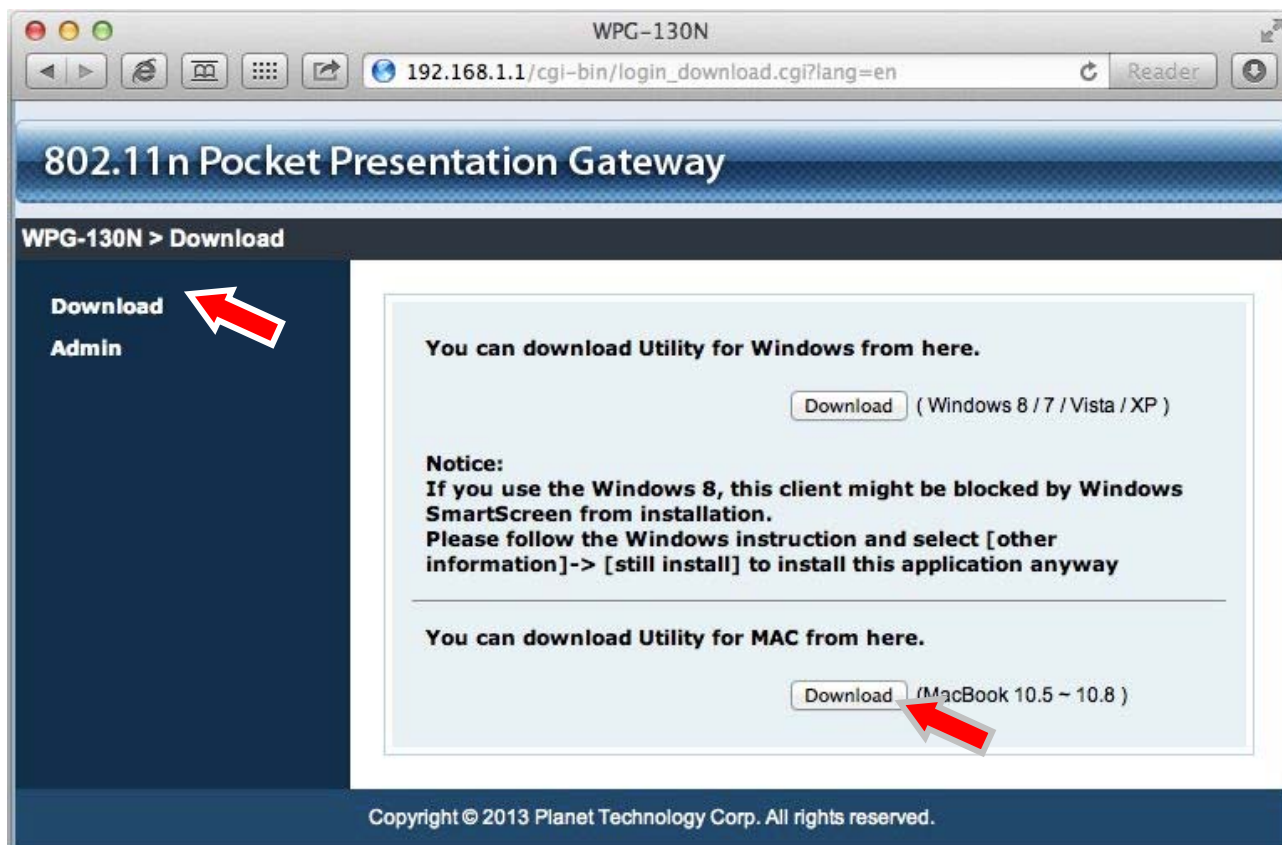


Figure 4-6

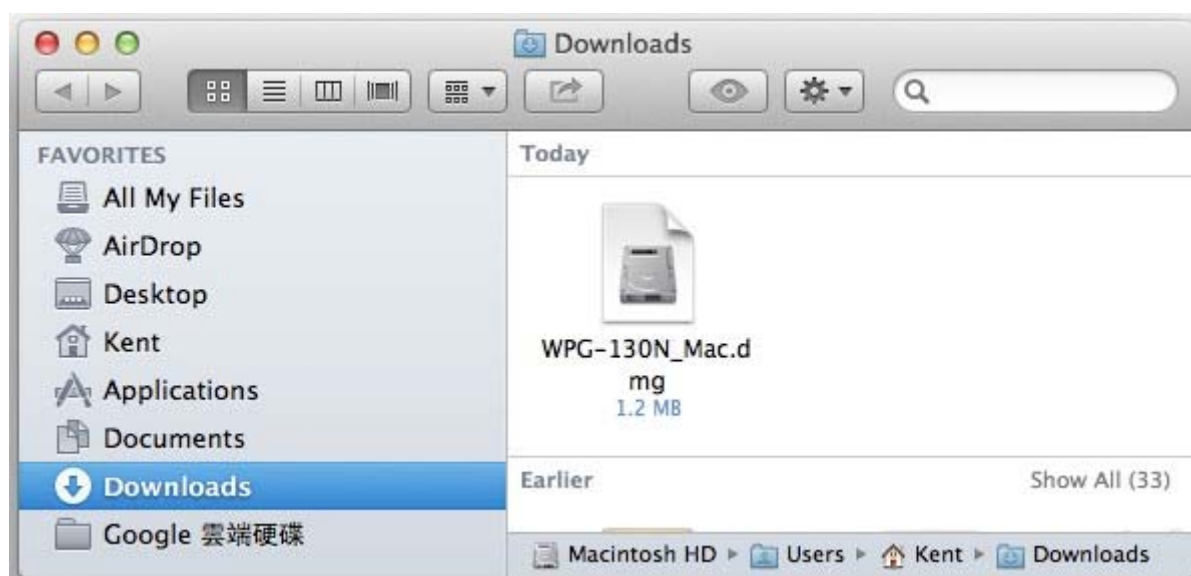


Figure 4-7

Step 3. : To install the WPG on the iMAC or Macbook OSX system, drag the WPG icon onto the Applications folder or to the Dock.

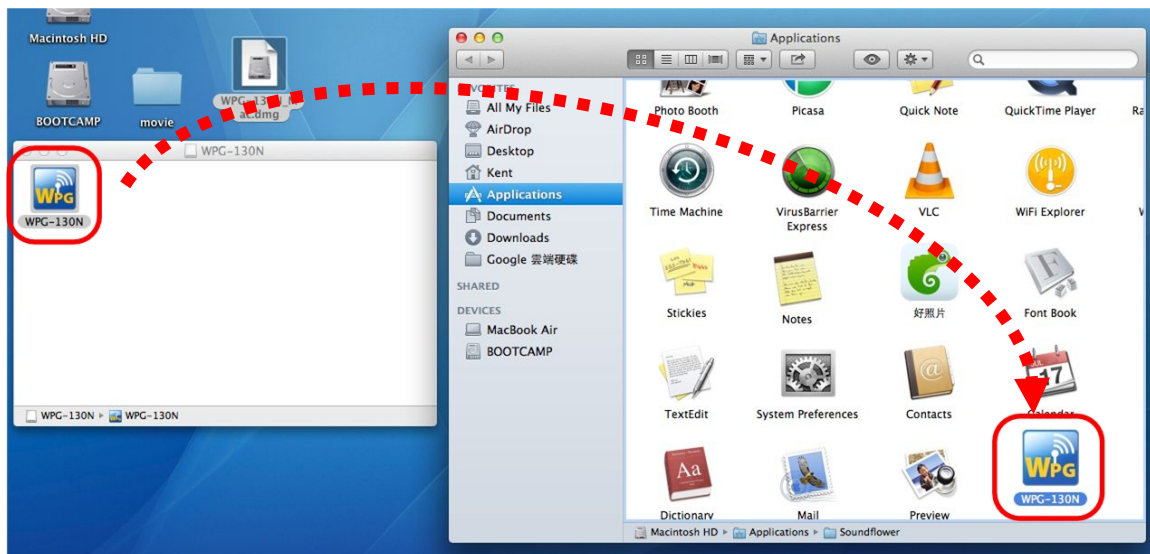


Figure 4-8

Step 4. Click "WPG" icon to execute the program.



Step 5. WPG will start to search the available access points automatically if you have not connected your MAC to WPG-130N manually. When the WPG-130N is displayed in the list, please click it to connect and then **enter the Login Code** shown on the projector screen.



Figure 4-9

Step 6. Once the WPG-130N is connected, the application will temporarily adjust your PC resolution for best projection result, and then project your screen to projector or TV.



Figure 4-10

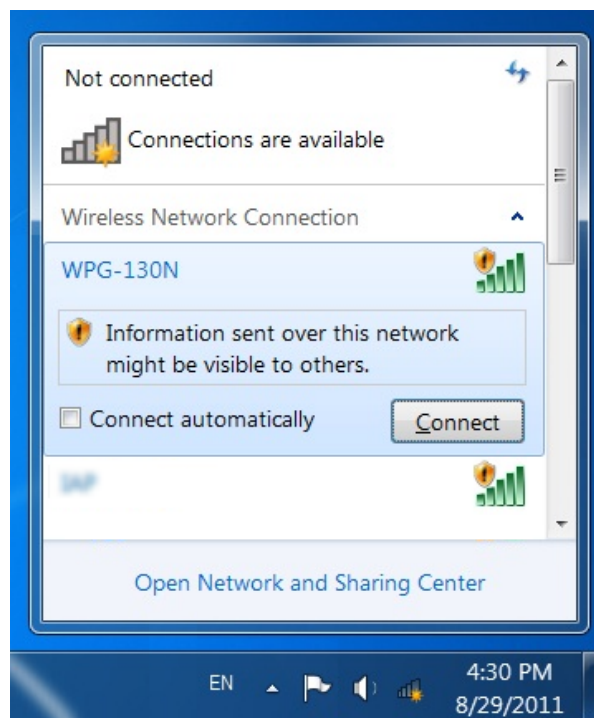
You should see your PC Desktop on projector or TV screen now.

Chapter 5. WEB UI MANAGEMENT

5.1. WPG-130N Homepage

Please follow the steps below to enter the web UI of WPG-130N.

Step 1. First, please connect your Laptop to WPG-130N wirelessly.



Step 2. Open the web browser and it will redirect to WPG-130N home page automatically. Or you can enter the default IP address <http://192.168.1.1> to access it.

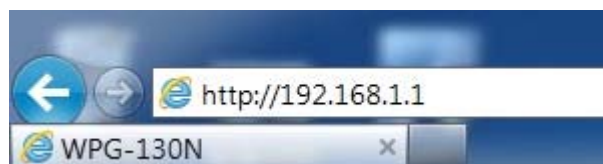


Figure 5-1

After a moment, the main screen appears as [Figure 5-2](#)




Figure 5-2

The following sections will introduce the detailed instructions of the web UI functions.

5.2. Download

Please follow the steps below to download and execute the WPG installation program.

- 1 Click **“Download”**.
- 2 Choose the WPG utility for **“Windows 7 / Vista / XP”** or **“Mac OS X”**, then click Download button and execute the installation program.
- 3 Follow the instructions of the Installation Wizard to proceed till the installation process complete. Once installation complete, a WPG utility shortcut  will appear on the desktop.



Note

If the **“Windows Security Alert”** pops up, just press **“Unblock”** button to continue the installation.



Figure 5-3

5.3. Admin

This function allows you to login web management UI of WPG-130N. Click “**Admin**”, and enter the password. The default value is “**admin**”. Then click the **Login** button or press the **Enter** key. Please refer to the following sections for further configuration of the web management UI.



Figure 5-4

Default IP Address: **192.168.1.1**

Default Password: **admin**

After entering the password, the main screen appears as [Figure 5-5](#)

5.3.1 System Status

In this page can show the current status and some basic settings of the presentation gateway.

802.11n Pocket Presentation Gateway

WPG-130N > Admin > System Status Logout »

System Status

Model Name: PLANET WPG-130N

Versions

Firmware Version: 2.0.0.4

Network Status

IP Address: 192.168.1.1

Subnet Mask: 255.255.255.0

Default Gateway: 192.168.1.1

Wireless MAC Address: 00:00:00:02:DF:B8

Connection Status

Projecting Status: Waiting for Projecting

Total Users: 0

Copyright © 2011 Planet Technology Corp. All rights reserved.

Figure 5-5

Object	Description
Model Name	Product model name
Firmware Version	Product firmware version number
Network Status	
IP Address	The IP address of WPG-130N
Subnet Mask	The subnet mask
Default Gateway	The default gateway
Wireless MAC Address	The wireless MAC address
Wire MAC Address	The wire MAC address
Connection Status	
Projecting Status	It shows "Waiting for projecting" or "Projecting".
Total Users	The number of users who has already login into WPG utility

Table 5-1

5.3.2 Network Setup

This page is used to configure the parameters for the local area network which connects to the wireless interface. Here you may change the setting for IP address, subnet mask, DHCP server, etc..

■ IP Setup

Figure 5-6

The page includes the flowing detail fields:

Object	Description	
IP Setup		
Obtain IP address automatically	If you select this option, the WPG-130N will detect the network environment automatically.	
	<ul style="list-style-type: none">■ When WPG-130N is connected to a LAN that has DHCP server, the clients of WPG-130N will be assigned an IP by that server and the built-in DHCP server of WPG-130N will be disabled.■ When the WPG-130N is connected to a LAN that does not have any DHCP server, the built-in DHCP server of WPG-130N will be enabled and the clients of WPG-130N will obtain IP address by itself.	
Use the following IP address	Or you can select this option to use the fixed IP address for WPG-130N. (Default Settings)	
	IP Address	The default value is 192.168.1.1
	Subnet Mask	The default value is 255.255.255.0
	Default Gateway	The default value is 192.168.1.1
	DNS Server	The default value is 192.168.1.1

■ DHCP Server Setup

DHCP Server Setup	<input checked="" type="radio"/> Auto <input type="radio"/> Disable				
	Start IP	192	168	1	11
	End IP	192	168	1	254
	Subnet Mask	255	255	255	0
	Default Gateway	192	168	1	1
	DNS Server	192	168	1	1

Figure 5-7

The page includes the flowing detail fields:

Object	Description
DHCP Server Setup	
Auto	Select “ Auto ” to enable the built-in DHCP server of WPG-130N. (Default Settings)
	Start IP The default value is 192.168.1.11
	End IP The default value is 192.168.1.254
	Subnet Mask The default value is 255.255.255.0
	Default Gateway The default value is 192.168.1.1
	DNS Server The default value is 192.168.1.1
Disable	Or you can select this option to disable the DHCP server of WPG-130N.

■ Wireless Setup

Wireless Setup	Region	WORLDWIDE
	SSID	WPG-130N
	SSID Broadcast	<input checked="" type="radio"/> Enable <input type="radio"/> Disable
	Channel	Auto
	Encryption	Disable
	Key	

Figure 5-8

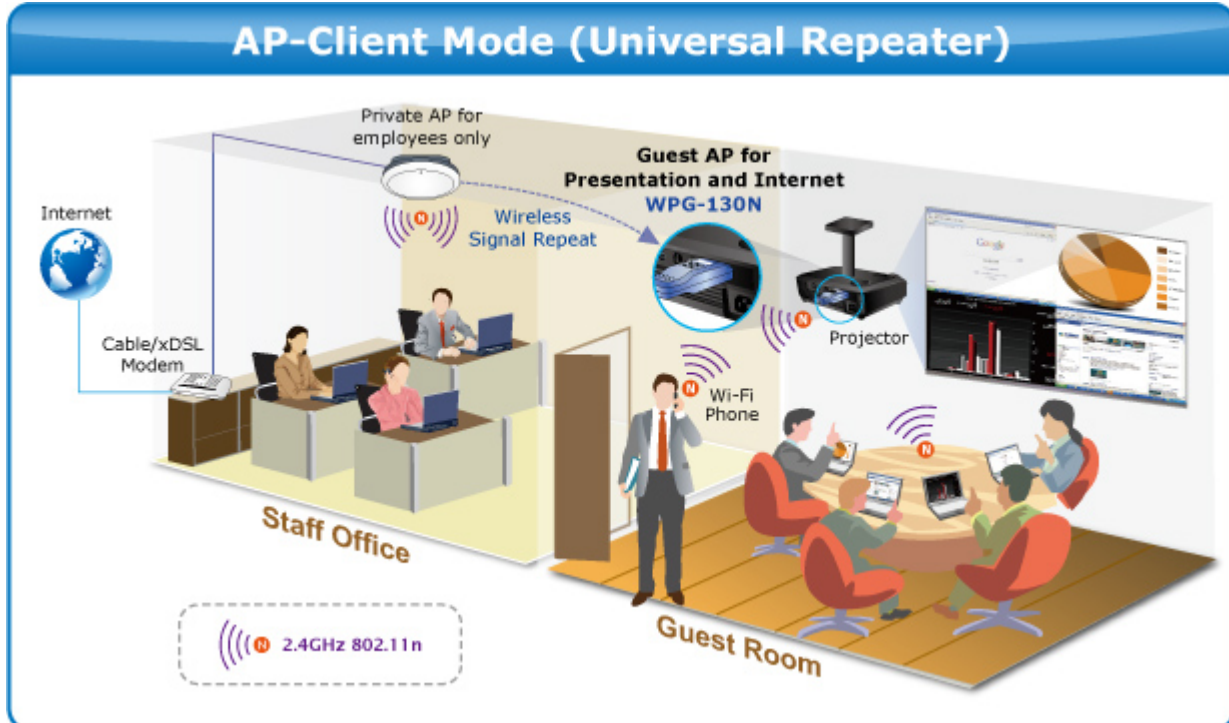
The page includes the flowing detail fields:

Object	Description
Wireless Setup	
Wireless LAN	The option for enabling or disabling wireless LAN function

	Embedded AP SSID	You can configure the SSID string here when Wireless LAN is enabled.
Region	The default value is "Worldwide".	
SSID Broadcast	The default value is "Enable".	
Channel	If you select " Auto ", the WPG-130N will scan all of the wireless channels and choose a clear one automatically. Or you can select a fixed channel.	
Encryption	The option of wireless security. You can select one of : <ul style="list-style-type: none"> ■ WEP ■ WPA-PSK ■ WPA2-PSK ■ Disable 	
Key	If Encryption is enabled, you have to set the key according to the encryption mode you selected.	

■ AP Client Setup

Enable the "**Connect to Existing AP**" make the WPG-130N can join other access point wirelessly. Besides, the clients can also login WPG-130N for presentation and surf the Internet via other AP simultaneously.



The WPG-130N supports multiple encryption methods in wireless security. Please make sure you have entered the correct existing WiFi SSID, encryption type, and key of your main AP.

Ap Client	Connect to Existing AP	Existing AP SSID
	<input type="radio"/> Enable <input checked="" type="radio"/> Disable	<input type="text"/>
	Encryption	<input type="text" value="Disable"/>
	Key	<input type="text"/>
		<input type="button" value="Apply"/> <input type="button" value="Cancel"/>

Figure 5-9

The page includes the flowing detail fields:

Object	Description	
AP Client		
Connect to Existing AP	The option for enabling or disabling AP Client mode. By this feature you can join other existed Access Point wirelessly.	
	Existing AP SSID	Enter the SSID of the existed AP here when AP Client mode is enabled.
Encryption	The WPG-130N supports multiple encryption methods of wireless security. Please choose the same encryption method of wireless security with the existed AP you want to join.	
Key	Enter the key of the existed AP you want to join.	

Table 4-2



The wireless security of WPG-130N supports AES (Advanced Encryption Standard).

Click the **Apply** button to make the changes to take effect.

5.3.3 OSD Setup

Users can customize their own OSD (on-screen display) standby image.

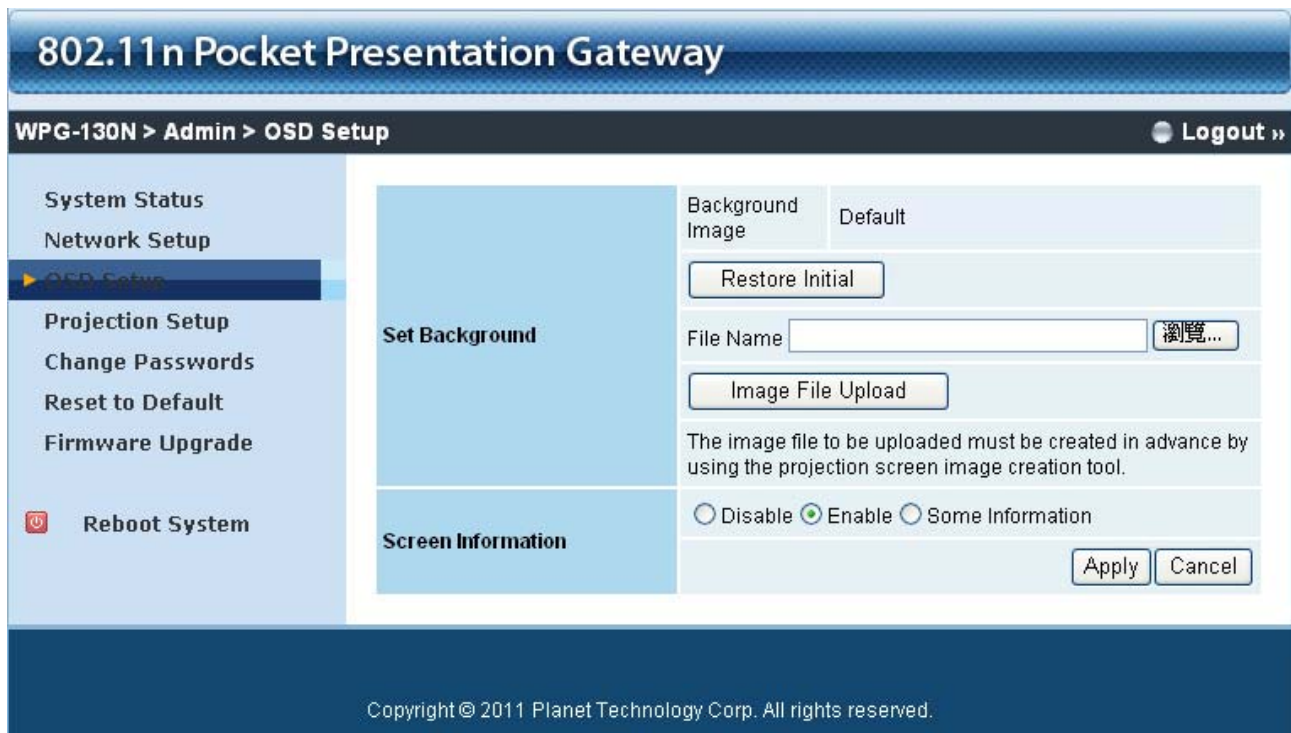


Figure 4-8

The web page includes the flowing fields:

Object	Description
Restore Initial	Restore to the default OSD standby image.
Image File Upload	Upload the customized OSD standby image. (You need to use the provided IB Maker utility stored in the CD-ROM to convert the image to the system defined format.)
Screen Information	You can choose to show the detailed information about projection and connection on the standby screen.

Table 4-3

Click the **Apply** button to make the changes to take effect.

5.3.4 Projection Setup

Figure 4-9

The web page includes the flowing fields:

Object	Description
Resolution	VGA: WXGA+ (1280x800) WXGA (1280x768) XGA (1024x768) (Default setting) SVGA (800x600). HDMI: 720p (1280x720)
Login Code	You can select "Disable", "Random", or "Use the following code" to set a specified 4-characters Number.

Table 4-4

Click the Apply button to make the changes to take effect.

5.3.5 Change Passwords

Users can change the login password. The length of password is up to 8 characters.



802.11n Pocket Presentation Gateway

WPG-130N > Admin > Change Passwords Logout »

System Status
Network Setup
OSD Setup
Projection Setup
► Change Passwords
Reset to Default
Firmware Upgrade
 Reboot System

Admin

Enter New Password	<input type="text"/>	<input type="button" value="Apply"/>
Confirm New Password	<input type="text"/>	

Copyright © 2011 Planet Technology Corp. All rights reserved.

Figure 4-10

Click the **Apply** button to make the changes to take effect.

5.3.6 Reset to Default

This page allows you to reset the current configuration to factory default.



802.11n Pocket Presentation Gateway

WPG-130N > Admin > Reset to Default Logout »

System Status
Network Setup
OSD Setup
Projection Setup
Change Passwords
► Reset to Default
Firmware Upgrade
 Reboot System

Reset to Default
 This will restore the device to the factory default settings.

Copyright © 2011 Planet Technology Corp. All rights reserved.

Figure 4-11

Click the **Apply** button to restore the WPG-130N to the factory default settings.

5.3.7 Firmware Upgrade

This page allows you upgrade the WPG-130N firmware to new version. Please note, do not power off the device during the upload because it may crash the system.



Figure 4-12

If it is necessary to upgrade the firmware, please follow the steps below to operate carefully.

Step 1. First, download the latest firmware image file from PLANET official website.

Step 2. Click Browse button to specify the file you want to upgrade.

Step 3. Click Upgrade button to start.

Step 4. There will be a warning message shown and count down counter on the screen.

Step 5. After a few minutes, a complete message shown on the screen.

Step 6. Power off the WPG-130N, then power on it again.

Step 7. Login the web UI, and click Reset to Default to take effect.



When you upgrade its firmware, you may lose its current configurations. Do not turn off the WPG-130N while the firmware is being upgraded, otherwise, the WPG-130N may be damaged.



New firmware versions posted at the website of PLANET Technology can be downloaded for free. There is no need to upgrade the firmware unless the new firmware has a new feature you want to use.

5.3.8 Reboot System

Press Reboot to reboot system. Please wait for a few minutes and reload web page again.

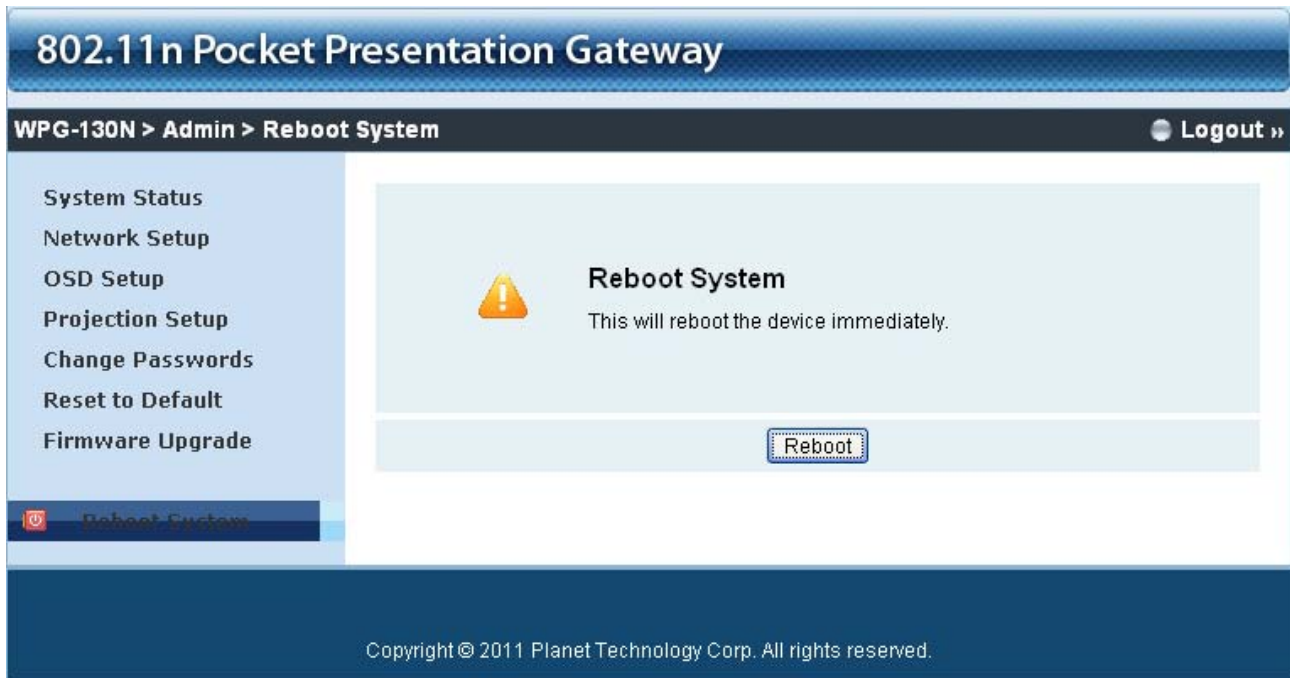


Figure 4-13

Click **Reboot** button to restart the WPG-130N.

Appendix A: Configuring the PCs

In this section, we'll introduce how to install and configure the TCP/IP correctly in Windows XP. First make sure your Ethernet Adapter is working, refer to the adapter's manual if needed.

1. Install TCP/IP component

- 1) On the Windows taskbar, click the **Start** button, point to **Settings**, and then click **Control Panel**.
- 2) Click the **Network and Internet Connections** icon, and then click on the **Network Connections** tab in the appearing window.
- 3) Right click the icon shown below, select Properties on the prompt page.

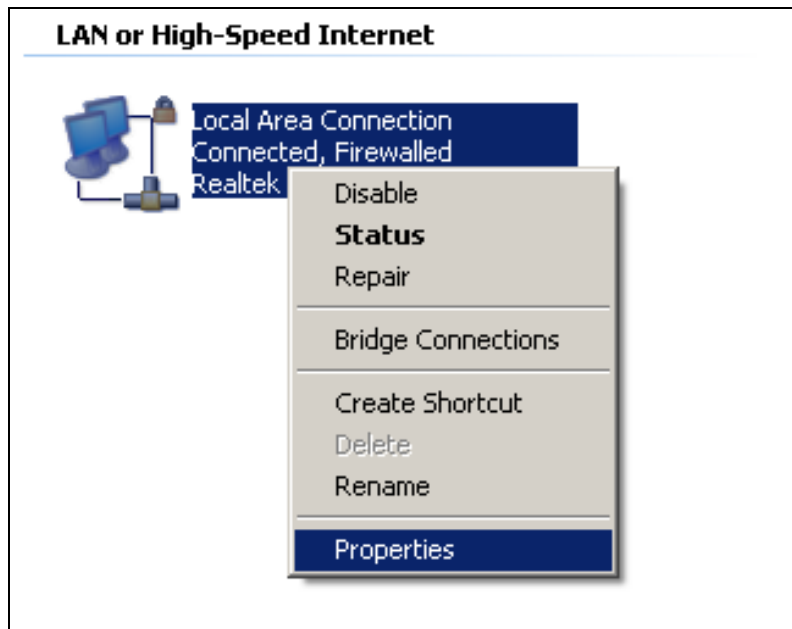


Figure A-1

- 4) In the prompt page shown below, double click on the **Internet Protocol (TCP/IP)**.

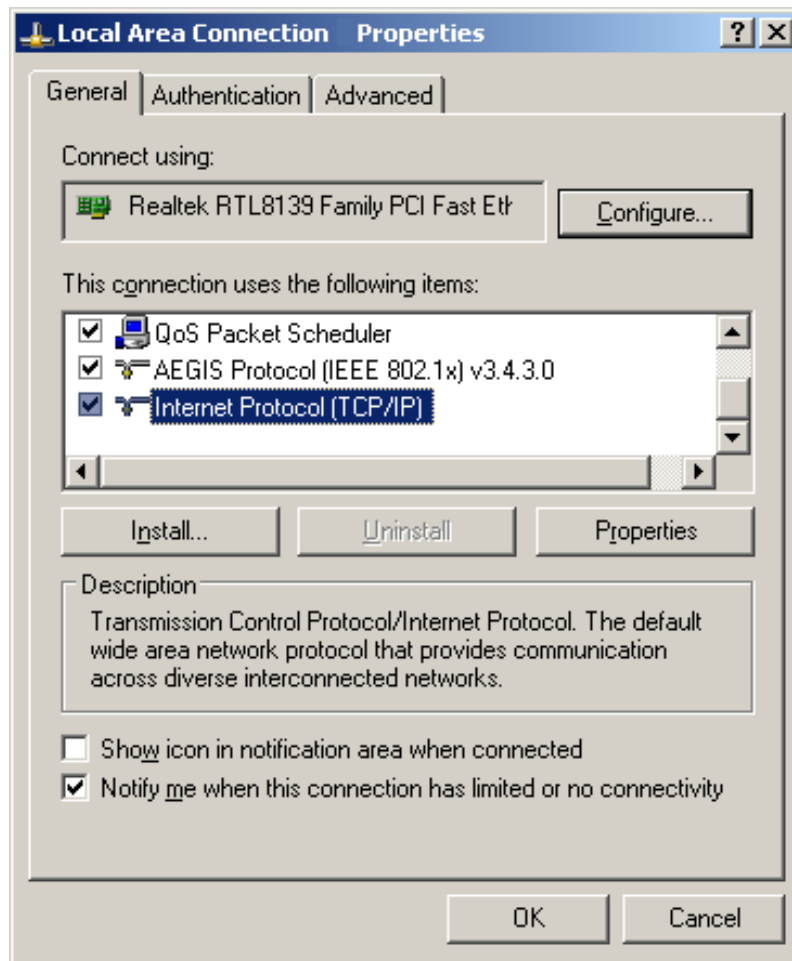


Figure A-2

- 5) The following **TCP/IP Properties** window will display and the **IP Address** tab is open on this window by default.

Now you have two ways to configure the **TCP/IP** protocol below:

➤ **Setting IP address automatically**

Select **Obtain an IP address automatically**, Choose **Obtain DNS server automatically**, as shown in the Figure below:

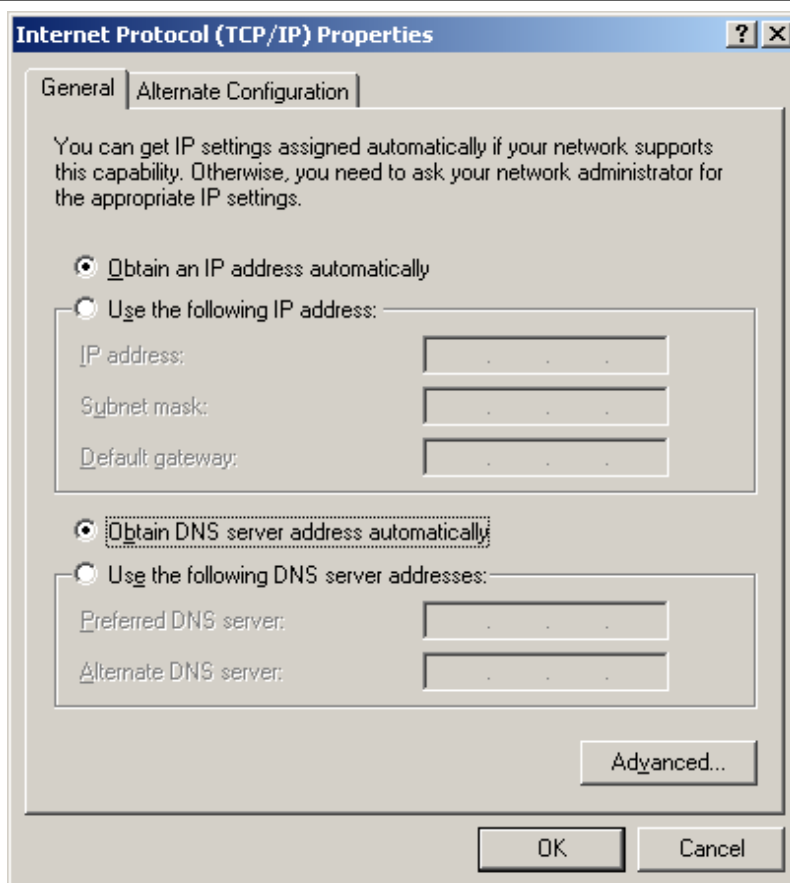


Figure A-3

➤ **Setting IP address manually**

- 1 Select **Use the following IP address** radio button.
- 2 If the device's LAN IP address is 192.168.1.1, type in IP address 192.168.1.x (x is from 2 to 254), and **Subnet mask** 255.255.255.0.
- 3 Type the device's LAN IP address (the default IP is 192.168.1.1) into the **Default gateway** field.
- 4 Select **Use the following DNS server addresses** radio button. In the **Preferred DNS Server** field you can type the DNS server IP address which has been provided by your ISP

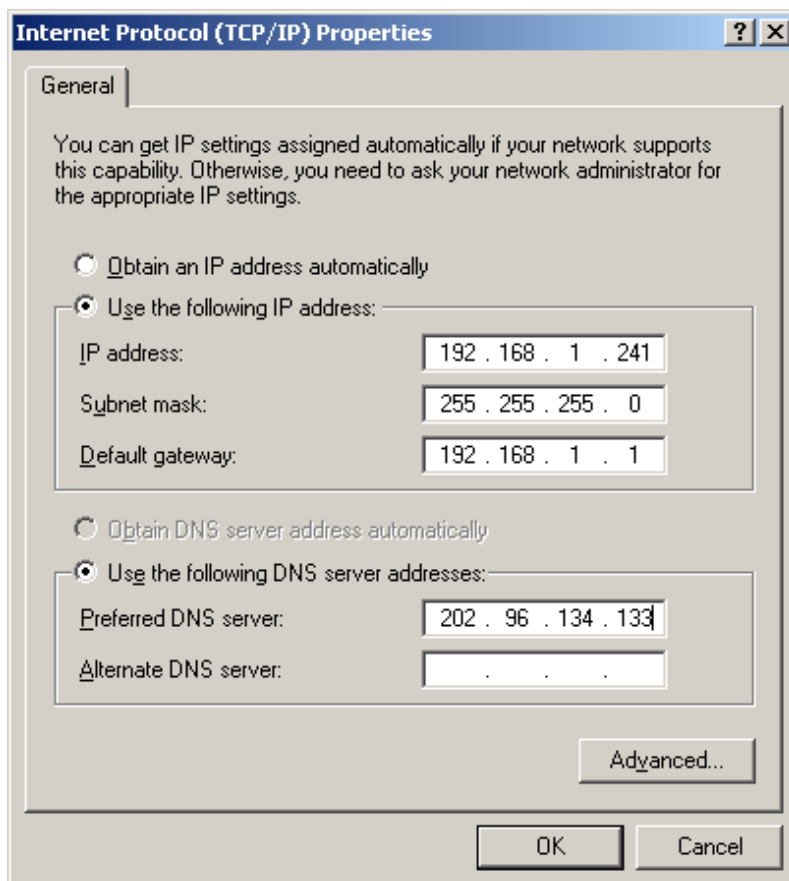


Figure A-4

Now click **OK** to keep your settings.

Appendix B: FAQ

FAQ1 : How to reset the WPG-130N to factory default?

[ANSWERS]

1) Power off the WPG-130N.

2) Press and hold the button, and then plug in the DC jack of the AC adapter to power on WPG-130N. After 10~15 seconds, you can release the button.



3) Now, you should be able to login the WPG-130N by default setting. (Default username and password are both “admin”).

EC Declaration of Conformity

For the following equipment:

*Type of Product: 802.11n Pocket Presentation Gateway

*Model Number: WPG-130N

* Produced by:

Manufacturer's Name : **Planet Technology Corp.**

Manufacturer's Address: 10F., No.96, Minquan Rd., Xindian Dist.,
New Taipei City 231, Taiwan (R.O.C.)

is herewith confirmed to comply with the requirements set out in the Council Directive on the Approximation of the Laws of the Member States relating to 1999/5/EC R&TTE.

For the evaluation regarding the R&TTE the following standards were applied:

EN 300 328 V1.7.1	(2006-10)
EN 301 489-17 V2.1.1	(2009-05)
EN 301 489-1 V1.9.2	(2011-09)
EN 55022	(2010 Class B)
EN 55024	(2010)
EN 61000-3-2	(2006 / A1:2009 / A2:2009)
EN 61000-3-3	(2008)
IEC 61000-4-2	(2008)
IEC 61000-4-3	(2006 / A1:2007 / A2:2010)
IEC 61000-4-4	(2004 / A1:2010)
IEC 61000-4-5	(2005)
IEC 61000-4-6	(2008)
IEC 61000-4-8	(2009)
IEC 61000-4-11	(2004)
EN 62311	(2008)
EN 60950-1	(2006 + A11:2009 + A1:2010 + A12:2011)

Responsible for marking this declaration if the:

☒ Manufacturer ☐ Authorized representative established within the EU

Authorized representative established within the EU (if applicable):

Company Name: Planet Technology Corp.

Company Address: 10F., No.96, Minquan Rd., Xindian Dist., New Taipei City 231, Taiwan (R.O.C.)

Person responsible for making this declaration

Name, Surname Kent Kang

Position / Title : Product Manager

Taiwan
Place

25 Feb., 2013
Date


Legal Signature

PLANET TECHNOLOGY CORPORATION

e-mail: sales@planet.com.tw http://www.planet.com.tw

10F., No.96, Minquan Rd., Xindian Dist., New Taipei City, Taiwan, R.O.C. Tel:886-2-2219-9518 Fax:886-2-2219-9528

EC Declaration of Conformity

English	Hereby, PLANET Technology Corporation , declares that this 802.11n Pocket Presentation Gateway is in compliance with the essential requirements and other relevant provisions of Directive 1999/5/EC.	Lietuviškai	Šiuo PLANET Technology Corporation , skelbia, kad 802.11n Pocket Presentation Gateway tenkina visus svarbiausius 1999/5/EC direktyvos reikalavimus ir kitas svarbias nuostatas.
Česky	Společnost PLANET Technology Corporation , tímto prohlašuje, že tato 802.11n Pocket Presentation Gateway splňuje základní požadavky a další příslušná ustanovení směrnice 1999/5/EC.	Magyar	A gyártó PLANET Technology Corporation , kijelenti, hogy ez a 802.11n Pocket Presentation Gateway megfelel az 1999/5/EK irányelv alapkövetelményeinek és a kapcsolódó rendelkezéseknek.
Dansk	PLANET Technology Corporation , erklærer herved, at følgende udstyr 802.11n Pocket Presentation Gateway overholder de væsentlige krav og øvrige relevante krav i direktiv 1999/5/EF	Malti	Hawnhekk, PLANET Technology Corporation , jiddikjara li dan 802.11n Pocket Presentation Gateway jikkonforma mal-htigijiet essenzjali u ma provvedimenti oħrajn rilevanti li hemm fid-Direttiva 1999/5/EC
Deutsch	Hiermit erklärt PLANET Technology Corporation , dass sich dieses Gerät 802.11n Pocket Presentation Gateway in Übereinstimmung mit den grundlegenden Anforderungen und den anderen relevanten Vorschriften der Richtlinie 1999/5/EG befindet". (BMW)	Nederlands	Hierbij verklaart PLANET Technology Corporation , dat 802.11n Pocket Presentation Gateway in overeenstemming is met de essentiële eisen en de andere relevante bepalingen van richtlijn 1999/5/EG
Eesti keeles	Käesolevaga kinnitab PLANET Technology Corporation , et see 802.11n Pocket Presentation Gateway vastab Euroopa Nõukogu direktiivi 1999/5/EC põhinõuetele ja muudele olulistele tingimustele.	Polski	Niniejszym firma PLANET Technology Corporation , oświadcza, że 802.11n Pocket Presentation Gateway spełnia wszystkie istotne wymogi i klauzule zawarte w dokumencie „Directive 1999/5/EC”.
Ελληνικά	<i>ΜΕ ΤΗΝ ΠΑΡΟΥΣΑ, PLANET Technology Corporation, ΔΗΛΩΝΕΙ ΟΤΙ ΑΥΤΟ 802.11n Pocket Presentation Gateway ΣΥΜΜΟΡΦΩΝΕΤΑΙ ΠΡΟΣ ΤΙΣ ΟΥΣΙΩΔΕΙΣ ΑΠΑΙΤΗΣΕΙΣ ΚΑΙ ΤΙΣ ΛΟΙΠΕΣ ΣΧΕΤΙΚΕΣ ΔΙΑΤΑΞΕΙΣ ΤΗΣ ΟΔΗΓΙΑΣ 1999/5/ΕΚ</i>	Português	PLANET Technology Corporation , declara que este 802.11n Pocket Presentation Gateway está conforme com os requisitos essenciais e outras disposições da Directiva 1999/5/CE.
Español	Por medio de la presente, PLANET Technology Corporation , declara que 802.11n Pocket Presentation Gateway cumple con los requisitos esenciales y cualesquiera otras disposiciones aplicables o exigibles de la Directiva 1999/5/CE	Slovensky	Výrobca PLANET Technology Corporation , týmto deklaruje, že táto 802.11n Pocket Presentation Gateway je v súlade so základnými požiadavkami a ďalšími relevantnými predpismi smernice 1999/5/EC.
Français	Par la présente, PLANET Technology Corporation , déclare que les appareils du 802.11n Pocket Presentation Gateway sont conformes aux exigences essentielles et aux autres dispositions pertinentes de la directive 1999/5/CE	Slovensko	PLANET Technology Corporation , s tem potrjuje, da je ta 802.11n Pocket Presentation Gateway skladen/a z osnovnimi zahtevami in ustreznimi določili Direktive 1999/5/EC.
Italiano	Con la presente, PLANET Technology Corporation , dichiara che questo 802.11n Pocket Presentation Gateway è conforme ai requisiti essenziali ed alle altre disposizioni pertinenti stabilite dalla direttiva 1999/5/CE.	Suomi	PLANET Technology Corporation , vakuuttaa täten että 802.11n Pocket Presentation Gateway tyyppinen laite on direktiivin 1999/5/EY oleellisten vaatimusten ja sitä koskevien direktiivin muiden ehtojen mukainen.
Latviski	Ar šo PLANET Technology Corporation , apliecina, ka šī 802.11n Pocket Presentation Gateway atbilst Direktīvas 1999/5/EK pamatprasībām un citiem atbilstošiem noteikumiem.	Svenska	Härmed intygar, PLANET Technology Corporation , att denna 802.11n Pocket Presentation Gateway står i överensstämmelse med de väsentliga egenskapskrav och övriga relevanta bestämmelser som framgår av direktiv 1999/5/EG.