

AW2400xTP

USER'S MANUAL

2.4 GHz Integrated Radio & Antenna

Industrial-grade, long-range wireless Ethernet systems


AvaLAN
WIRELESS

Thank you for your purchase of the AW2400xTP multipoint wireless Ethernet radio with integrated antenna.

The AW2400xTP includes:

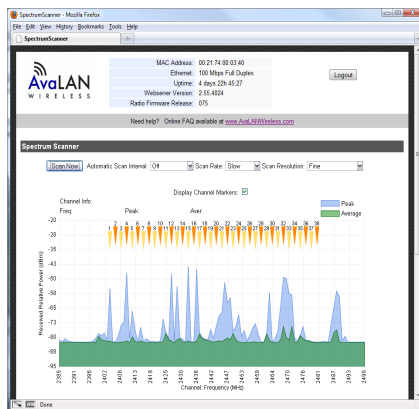
- (1) Integrated Radio & Antenna Unit, 19 dBi gain Flat Panel
- (1) 120 VAC to 12 VDC power adapter
- (1) AW-POE Power Over Ethernet Injector

If you have any questions when configuring your AvaLAN system, the best place to get answers is to visit www.avalanwireless.com.

You will also find the latest updates there.

If more assistance is needed,
send email to support@avalanwireless.com.

To speak to a live technician, please call technical support at the number below during normal business hours.



© 2010 by AvaLAN Wireless Systems Inc. All rights reserved.

Revision 08.17.2010
125A Castle Drive
Madison, AL 35758

Sales: (866) 533-6216
Technical Support: (650) 384-0000
Customer Service: (650) 641-3011
Fax: (650) 249-3591

Operational summary

The AW2400xTP Integrated Radio & Antenna allows the user to create a long-range, wireless Ethernet network with up to 16 Subscriber Units per Access Point. The configuration may include any combination of AW2400xTR, AW2400iTR and AW2400xTP radios.

Configuring a wireless link with the AW2400xTP requires the establishment of six elements:

- Each radio must know whether it is to be an Access Point (AP) or Subscriber Unit (SU).
- Each radio must have an IP address that is unique among all others on the same network.
- The AP must know how many SUs are expecting communication with it.
- The AP and any given SU must agree on which radio frequency channel they are using. This can be manually set or allowed to change automatically.
- The SU must be assigned a unique subscriber ID to specify which time division slot it will use when communicating with the AP.
- The AP and any given SU must share a common 128-bit encryption key. APs can exchange keys with up to 63 SUs, though only 16 can be connected at any given time.

The AP automatically scans for the best of the 37 available radio frequency channels, encrypts Ethernet data received from the network, and transmits it wirelessly to the correct SU. The AP is constantly monitoring the radio link and can automatically change the channel if performance is degraded due to interference. If two AP units are physically close to one another, they may interfere if operating on adjacent frequency channels. Place them at least 10 feet apart or manually select non-adjacent channels for their operation. Also, the SU should be placed at least 10 feet from the AP to avoid overloading the receivers.

Any 10/100 BaseT Ethernet client device (ECD) can be connected to an AW2400xTP Subscriber Unit. Each SU encrypts Ethernet traffic received from the attached ECD and transmits the data wirelessly to its AP. Each SU can be plugged directly into an ECD without adding drivers or loading software. Essentially, once the AP/SU pair is configured and running it behaves like a continuous Ethernet cable.

Physical Setup

1. Before mounting the radio in its final location, you may want to perform the digital setup procedure described in the next section.
2. Mount the AW2400xTP securely using the mounting bracket provided or other means as necessary. Maximize lightning resistance by providing a strong DC ground connection to the metal housing.
3. The unit may be mounted with horizontal or vertical polarization and it is important that the antenna of the Access Point and the antenna of the Subscriber Unit be pointed toward one another and be oriented with the same polarization. Use care in aiming because the antenna beam width is only about 10°. In a point-to-multipoint situation with radially dispersed SUs, you should use an AW2400xTR equipped with an omnidirectional antenna as the Access Point.
4. Power is provided to the unit by means of the Ethernet cable, allowing the power supply to be located at a convenient location. The included power-over-Ethernet injector (POE) provides the means for adding DC power to unused wires in the cable. Decide where to place the POE based on proximity to AC power at some point along the desired path of the Ethernet cable. Plug the included power supply into an appropriate electrical outlet and into the POE. Connect an Ethernet cable between your network and the "DATA IN" port on the POE. Connect a second cable from the "P + DATA OUT" port on the POE and the AW2400xTP. The AW2400xTP is provided with a cable clamping device that allows an RJ45 plug on the cable to pass through it and can be tightened down around the cable to provide a weatherproof seal.

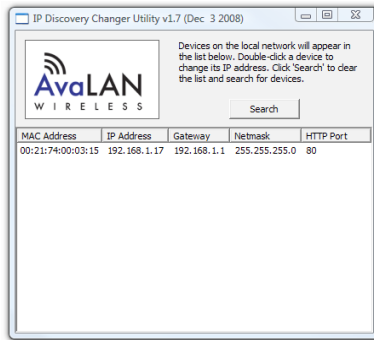
Digital Setup

1. Digital configuration is done by means of the AW2400xTP's built in browser interface. It should be powered on and connected at least temporarily to a network containing a computer that can run a conventional web browser.
2. Download the AvaLAN IP Discovery Utility from our website and extract ipfinder.exe from the zip archive, placing it on your desktop or in a convenient folder.

<http://www.avalanwireless.com/ipfinder/ipfinder.zip>

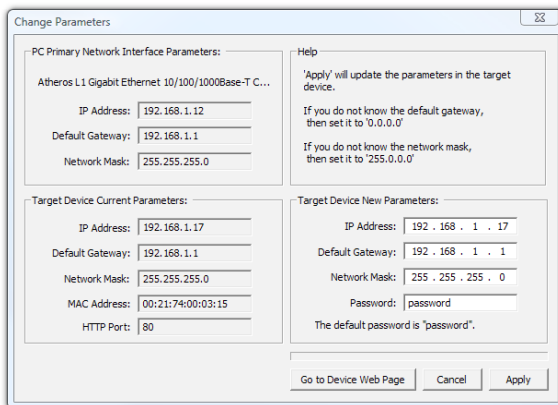
Note that this utility only runs on MS Windows, not linux or MAC. If you must use a non-Windows computer for configuration, make sure your subnet mask allows your computer to see 192.168.17.17. Connect to that default IP address with your web browser, continuing the setup procedure with step 6.

3. Run the IP Discovery Utility, ipfinder.exe and you should see a window similar to the view on the next page.



The AW2400xTP should appear in the list at the default IP address of 192.168.17.17. If it does not, click “Search” to regenerate the list. If it still does not appear, you have a connection issue and need to re-examine the cabling or you may have a firewall issue on your computer.

4. Double click the list item that refers to the AW2400xTP being configured. You should see a second window similar to this:



The information on the left is the current status of the radio, while the boxes on the right allow you to change it. Choose your desired parameters and click “Apply.”

5. Make note of the chosen IP address and password, then click “Go to Device Web Page.” This will cause your default web browser to launch with the device IP address in the browser address bar. Or you may launch the browser on your own and enter the web page address manually: [http://\[the IP address you just set\]](http://[the IP address you just set]).

6. The browser page that loads first shows the current device information and QoS statistics and provides a login at the upper right. Log in using the password you just specified (or “password” if you kept the default). If the login succeeds, you will see an admin page similar to this:

The screenshot shows the 'xTR - Admin - Mozilla Firefox' browser window. The address bar shows the URL: <http://192.168.1.17/admin.html?seed=7e406fe009964df8&hash=ce79c1dee2034fe>. The page features the 'AvaLAN WIRELESS' logo and a navigation bar with links like 'Need help?', 'Online FAQ available at www.AvaLANWireless.com', and a 'Logout' button. The main content area is divided into three sections: 'Statistics', 'Device Information', and 'Device Settings'.

Statistics

Radio Block Error Rate:	0.0 %
Radio Total Packets:	0
Radio Failed Packets:	0
Radio Passed Packets:	0
Radio Broadcast Packets:	0
Radio Unicast Packets:	0
Radio Average TX Size:	0 bytes
Radio Average RX Size:	0 bytes

Device Information

Device Type:	Subscriber Unit
Subscriber ID:	0
Current RF Channel:	1
RF Connected:	No
Radio Active:	Standby
Product Code:	4
Radio Version:	3
Radio Firmware Release:	063

Device Settings

	Description	Value
Device	Password:	password
RF	Channel:	<input checked="" type="radio"/> Use DIP 3-8 selection: 0 (auto channel select mode) <input type="radio"/> <input type="text"/> (overrides the current DIP 3-8 selection)
Network	IP Address:	192.168.1.17 (###)
	Network Mask:	255.0.0.0 (###)
	Default Gateway:	0.0.0.0 (###)
	HTTP Port:	80 (decimal 1-65535)

Buttons: Apply, Cancel

7. The admin page has sections similar to the login page showing radio statistics and device information plus it adds several new sections. The Device Settings section allows setting the network information and choosing an RF frequency channel. The default is to allow the radio to choose its own frequency based on minimizing interference. If you set a fixed channel, make sure the AP and all SUs use the same one. References to DIPs on this and the next web page refer to switches inside the radio that are used in the legacy method of configuration and may be ignored when using the browser method.

If you scroll down in the Admin browser page, you will come to three more sections:

- A graphical spectrum analyzer display that may help you to select radio channels that avoid interference
- A section to be used if an update to the AW2400xTP's firmware is required
- An Advanced Links section with a dire **warning** about advanced users only.

Despite the warning, you will need to click the “Advanced Admin” button in order to set the device type, ID and encryption key. You should then see a page similar to that on the next page.

Version: 1.48.4003
 MAC Address: 00:21:74:00:03:16
 Ethernet: 100 Mbps Full Duplex
 Uptime: 0 days 00h 10 45

Need help? Online FAQ available at www.AvaLANWireless.com

**Warning! These settings are only for use by advanced users!
 Please proceed with caution.**

Device Settings

	Description	Value
Device:	Type:	<input type="radio"/> Access Point (override DIP 1 selection) <input checked="" type="radio"/> Subscriber Unit (DIP 1 selection)
	Subscriber ID:	Every SU must have a unique ID. Valid IDs are from 1 to 63. 1 (decimal 1-63)
Encryption:	<input checked="" type="checkbox"/> Enable User Specified Keys xxxxx-xxxx	
	Network Name (32-bit):	0000-0076 (hex)
	Encryption Key (128-bit):	0123-4567-890A-BCDE-F012-3456-789A-BCDE (hex)

Caution! By enabling **User Specified** keys, you will have to manually key all of your subscriber units. **Apply** **Cancel**

Reset the Device

Reset Device

8. On the Advanced Admin page, set the parameters as follows:

- Choose Device Type: Access Point or Subscriber Unit.
- For Subscriber Units, assign unique ID numbers in numeric order from 1 to 63.
- For an Access Point, enter the number of Subscriber Units that will be communicating with it.
- Click the box labeled “Enable User Specified Keys.”
- Choose an 8-digit hex (0-9 and A-F) Network Name that will be common among the AP and its SUs and enter it. The hyphen is required.
- Choose a 32-digit hex encryption key and enter it. Again, the hyphens are required. This key must match between the AP and the SU so make a note of it as well.

After entering the parameters, click the “Apply” button to save them to the radio.

9. When all of the radios are keyed and operating, connect them to your network and Ethernet devices as desired and cycle the radio’s power to begin normal operation. Now, browser management of the SUs can be performed over the wireless network. Note: avoid plugging actively linked radios into the same switch because this will corrupt its routing table and may cause network problems just as if you had plugged a CAT5 cable directly between two ports of a switch.

2.4 GHz Channels

Channel	Center Frequency	Channel	Center Frequency
0	Auto Mode	19	2.441667 GHz
1	2.404167 GHz	20	2.443750 GHz
2	2.406250 GHz	21	2.445833 GHz
3	2.408333 GHz	22	2.447917 GHz
4	2.410417 GHz	23	2.450000 GHz
5	2.412500 GHz	24	2.452083 GHz
6	2.414583 GHz	25	2.454167 GHz
7	2.416667 GHz	26	2.456250 GHz
8	2.418750 GHz	27	2.458333 GHz
9	2.420833 GHz	28	2.460417 GHz
10	2.422917 GHz	29	2.462500 GHz
11	2.425000 GHz	30	2.464583 GHz
12	2.427083 GHz	31	2.466667 GHz
13	2.429167 GHz	32	2.468750 GHz
14	2.431250 GHz	33	2.470833 GHz
15	2.433333 GHz	34	2.472917 GHz
16	2.435417 GHz	35	2.475000 GHz
17	2.437500 GHz	36	2.477083 GHz
18	2.439583 GHz	37	2.479167 GHz

Limited Warranty

This product is warranted to the original purchaser for normal use for a period of 360 days from the date of purchase. If a defect covered under this warranty occurs, AwaLAN will repair or replace the defective part, at its option, at no cost. This warranty does not cover defects resulting from misuse or modification of the product.

Compliance Statement (Part 15.19)

This device complies with Part 15 of the FCC Rules.

Operation is subject to the following two conditions:

1. This device may not cause harmful interference, and
2. This device must accept any interference received, including interference that may cause undesired operation.

Warning (Part 15.21)

Changes or modifications not expressly approved by the party responsible for compliance could void the user's authority to operate the equipment.

RF Exposure (OET Bulletin 65)

To comply with FCC RF exposure requirements for mobile transmitting devices, this transmitter should only be used or installed at locations where there is at least 20cm separation distance between the antenna and all persons.

Information to the User - Part 15.105 (b)

This equipment has been tested and found to comply with the limits for a Class B digital device, pursuant to part 15 of the FCC Rules. These limits are designed to provide reasonable protection against harmful interference in a residential installation. This equipment generates, uses and can radiate radio frequency energy and, if not installed and used in accordance with the instructions, may cause harmful interference to radio communications. However, there is no guarantee that interference will not occur in a particular installation. If this equipment does cause harmful interference to radio or television reception, which can be determined by turning the equipment off and on, the user is encouraged to try to correct the interference by one or more of the following measures:

- Reorient or relocate the receiving antenna.
- Increase the separation between the equipment and receiver.
- Connect the equipment into an outlet on a circuit different from that to which the receiver is connected.
- Consult the dealer or an experienced radio/TV technician for help.