

AARDVARK NOW MEANS BUSINESS!

WORD PROCESSING THE EASY WAY— WITH MAXI-PROS

This is a line-oriented word processor designed for the office that doesn't want to send every new girl out for training in how to type a letter.

It has automatic right and left margin justification and lets you vary the width and margins during printing. It has automatic pagination and automatic page numbering. It will print any text single, double or triple spaced and has text centering commands. It will make any number of multiple copies or chain files together to print an entire disk of data at one time.

MAXI-PROS has both global and line edit capability and the polled keyboard versions contain a corrected keyboard routine that make the OSI keyboard decode as a standard typewriter keyboard.

MAXI-PROS also has sophisticated file capabilities. It can access a file for names and addresses, stop for inputs, and print form letters. It has file merging capabilities so that it can store and combine paragraphs and pages in any order.

Best of all, it is in BASIC (0S65D 51/4" or 8" disk) so that it can be easily adapted to any printer or printing job and so that it can be sold for a measly price.

MAXI-PROS — \$39.95

THE EDSON PACK ALL MACHINE CODE GAMES FOR THE 8K C1P

INTERCEPTOR — You man a fast interceptor protecting your cities from Hordes of Yucky Invaders. A pair of automatic cannon help out, but the action speeds up with each incoming wave. It's action, action everywhere. Lots of excitement! \$14.95

MONSTER MAZE — An Arcade style action game where you run a maze devouring monsters as you go. If one sees you first, you become lunch meat. Easy enough for the kids to learn, and challenging enough to keep daddy happy. \$12.95

COLLIDE — Fast-paced lane-switching excitement as you pick up points avoiding the jam car. If you succeed, we'll add more cars. The assembler code provides fast graphics and smooth action. \$9.95

**SPECIAL DEAL—THE ENTIRE EDSON PACK—
ALL THREE GAMES FOR \$29.95**

THE AARDVARK JOURNAL

FOR OSI USERS — This is a bi-monthly tutorial journal running only articles about OSI systems. Every issue contains programs customized for OSI, tutorials on how to use and modify the system, and reviews of OSI related products. In the last two years we have run articles like these!

- 1) A tutorial on Machine Code for BASIC programmers.
- 2) Complete listings of two word processors for BASIC IN ROM machines.
- 3) Moving the Directory off track 12.
- 4) Listings for 20 game programs for the OSI.
- 5) How to write high speed BASIC — and lots more —

Vol. 1 (1980) 6 back issues - \$9.00

Vol. 2 (1981) 2 back issues and subscription for 4 additional issues - \$9.00.

ACCOUNTS RECEIVABLE — This program will handle up to 420 open accounts. It will age accounts, print invoices (including payment reminders) and give account totals. It can add automatic interest charges and warnings on late accounts, and can automatically provide and calculate volume discounts.

24K and 0S65D required, dual disks recommended. Specify system.
Accounts Receivable. \$99.95

*** SPECIAL DEAL — NO LESS! ***

A complete business package for OSI small systems — (C1, C2, C4 or C8). Includes MAXI-PROS, GENERAL LEDGER, INVENTORY, PAYROLL AND ACCOUNTS RECEIVABLE — ALL THE PROGRAMS THE SMALL BUSINESS MAN NEEDS. \$299.95

P.S. We're so confident of the quality of these programs that the documentation contains the programmer's home phone number!

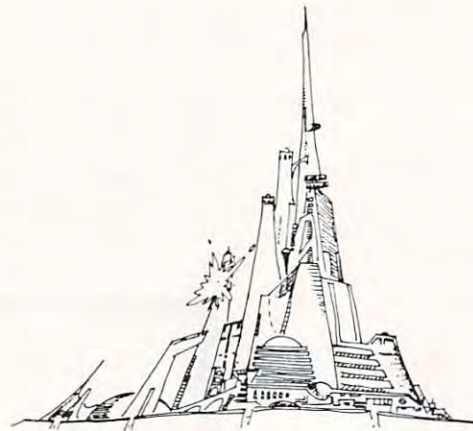
SUPERDISK II

This disk contains a new BEXEC* that boots up with a numbered directory and which allows creation, deletion and renaming of files without calling other programs. It also contains a slight modification to BASIC to allow 14 character file names.

The disk contains a disk manager that contains a disk packer, a hex/dec calculator and several other utilities.

It also has a full screen editor (in machine code on C2P/C4)) that makes corrections a snap. We'll also toss in renumbering and program search programs — and sell the whole thing for —
SUPERDISK II \$29.95 (5 1/4") \$34.95 (8").

AND FUN, TOO!



BOOKKEEPING THE EASY WAY — WITH BUSINESS I

Our business package 1 is a set of programs designed for the small businessman who does not have and does not need a full time accountant on his payroll.

This package is built around a **GENERAL LEDGER** program which records all transactions and which provides monthly, quarterly, annual, and year-to-date **PROFIT AND LOSS** statements. **GENERAL LEDGER** also provides for cash account balancing, provides a **BALANCE SHEET** and has modules for **DEPRECIATION** and **LOAN ACCOUNT** computation. **GENERAL LEDGER (and MODULES)** \$129.95.

PAYROLL is designed to interface with the **GENERAL LEDGER**. It will handle annual records on 30 employees with as many as 6 deductions per employee.
PAYROLL - \$49.95.

INVENTORY is also designed to interface with the general ledger. This one will provide instant information on suppliers, initial cost and current value of your inventory. It also keeps track of the order points and date of last shipment.
INVENTORY - \$59.95.

GAMES FOR ALL SYSTEMS

GALAXIAN - 4K - One of the fastest and finest arcade games ever written for the OSI, this one features rows of hard-hitting evasive dogfighting aliens thirsty for your blood. For those who loved (and tired of) Alien Invaders. Specify system — A bargain at \$9.95

MINOS - 8K - — Features amazing 3D graphics. You see a maze from the top, the screen blanks, and when it clears, you are in the maze at ground level finding your way through on foot. Realistic enough to cause claustrophobia. — \$12.95

NEW — NEW — NEW

LABYRINTH - 8K - This has a display background similar to MINOS as the action takes place in a realistic maze seen from ground level. This is, however, a real time monster hunt as you track down and shoot mobile monsters on foot. Checking out and testing this one was the most fun I've had in years! — \$13.95.

TIME TREK - 8K - Real Time and Real graphics Trek. See your torpedoes hit and watch your instruments work in real time. No more unrealistic scrolling displays! — \$9.95

SUPPORT ROMS FOR BASIC IN ROM MACHINES — C1S/C2S. This ROM adds line edit functions, software selectable scroll windows, bell support, choice of OSI or standard keyboard routines, two callable screen clears, and software support for 32-64 characters per line video. Has one character command to switch model 2 C1P from 24 to 48 character line. When installed in C2 or C4 (C2S) requires installation of additional chip. C1P requires only a jumper change. — \$39.95
C1E/C2E similar to above but with extended machine code monitor. — \$59.95

Please specify system on all orders

This is only a partial listing of what we have to offer. We now offer over 100 programs, data sheets, ROMS, and boards for OSI systems. Our \$1.00 catalog lists it all and contains free program listings and programming hints to boot.



THE OSI[®] GAZETTE



OSI RS232 Port And The High Speed Printer Interface

Paul Lilly
Pelham, AL

What About It?

I believe the thing I like most about my Superboard II is that it is full of surprises. Whatever OSI lacked in documentation they made up for it in utility, you just have to find it. While users of other systems pay upwards from \$100 for a serial interface, you can put one on a Superboard II for around \$5. And that includes a software selectable baud rate with handshaking. This article will show you how to install the port, and how to use it as a high speed printer interface.

How To Do It

OSI shows the schematic for this interface in their user manual, and, although the board has the runs etched in it, the parts were not installed by OSI. But don't try going by the board layout to plug in your parts, it's not exactly correct. Figure 1 is a correct board layout. If you only need a one-way port, you can omit Q2, D16, R62 and R66. If you want true RS232 voltage swings, you can cut between the 2 pads shown in the Note, and hook the high end (pin 7 of J3) to your negative supply. I have an Anadex DP8000 printer hooked up to my Superboard and although the manual for it says it needs a minimum of -3 volts for its RS232 input, I've left the 2 pads connected (voltage to printer swings +5 to 0 volts) and the printer works just fine anyway. Of course that doesn't mean yours will, so you may want to add the negative supply. If you don't need or want the extra speed from your printer, you need not hook up the handshake signals. This way you would be transferring information to your printer at 300 baud, which would allow you to LIST a program on your printer and tape at the same time. But if you want

or need to run your printer at high speed (we can run 4800 baud with no hardware changes), for printing reports, making listings of one program, etc., then you will need the handshake capability. For the handshake capability, we can connect one of four different ways (depending on our printer), to the Superboard's CTS (Clear to Send) bus. If your printer uses an RS232 compatible BUSY/READY signal, then connect it to pin 3 of J3 and:

- 1) If the signal is high (+) when the printer is ready, connect pin 6 of J3 to pin 9 of J3. See figure 3.
- 2) If the signal is low (-) when the printer is ready, connect pin 10 of J3 to pin 9 of J3. See figure 3.

If your printer uses a TTL compatible BUSY/READY signal (here we can omit Q2, D16, R62, R66) and;

- 1) If the signal is high (+) when the printer is ready, connect the signal to pin 6 of J3, the connect pin 10 of J3 to pin 9 of J3.
- 2) If the signal is low (-) when the printer is ready, connect the signal to pin 9 of J3. See figure 3.

Then in all cases, in figure 2 cut one foil and connect between 2 pads as shown, to route this CTS signal to the ACIA. That's it for the hardware. You now have your serial port, ready to run your printer. Although this article describes a hook-up to a printer we can also hook up to a terminal, and use the serial port as an audio port. (More on the audio port at the end of this article).

A little about the ACIA

Before going further, some understanding of the ACIA is necessary. OSI uses the Motorola 6850 ACIA chip, which has 4 registers in it. Two registers we can read from only; the Receive Data Register (read hex addr. F001), and the Status Register (read hex addr. F000). The other two registers we can only write into; the Transmit Data Register (write hex addr. F001), and the Control Register (write hex addr. F000). The Control and Status registers are what give us the programmable flexibility to get the most out of our \$5 interface. The control Register allows us to select the format we use to transmit and receive bits, select our transmit rate (baud), enable or disable control and interrupt signals, and reset the ACIA. Bits D0 and D1 are the counter divide and reset bits. Table 1 shows the usage for these bits.

As shown in the table we can select 1 of 3

possible divisions of our transmit clock merely by programming it. If you have a stock Superboard II, the TX clock input is approx. 4800 Hz. The monitor ROM (during system initialization) sets the clock divide to 16, which gives us our baud rate of 300 for our cassette interface. Now here's the trick, prior to outputting to our printer, we write zeros into D0 and D1, setting our clock divide to 1. With our existing TX clock input of 4800 Hz, this will give us a baud rate of 4800. Now we have 300 baud for our cassette, and 4800 baud for our printer, with no hardware changes to go back and forth between them. Bits D2, D3, and D4 select different combinations of word length, parity, and stop bits, Table 2 gives their usage. The monitor sets these bits such that we transmit 8 bits, then 2 stop bits. That setup works fine with my printer so I kept that format in my programming. You will want to check the manual for your printer, determine what format in which it needs to receive bits, and program the ACIA accordingly. Bits D5, D6 and D7 are used to program the IRQ and RTS functions, which are not needed at this time, so we will leave these bits cleared. Therefore when you want to set up the ACIA to run the printer at 4800 baud you will first want to write the binary word 00000011 into hex addr, F000 (POKE61440,3) to reset the ACIA, then write the binary word 00010000 into F000 (POKE61440,16), to select the format and baud rate.

The Status Register will (among many other things) let us know when the Transmitter Register is ready to accept another word. Bit 1 of the Status Register is the Transmitter Register Ready bit. If it is set to 1, we can send another word to the Transmitter Register (F001). Two things will keep this bit from being set; 1) If the ACIA has not yet transferred the last word that was written and 2) If the CTS line to the ACIA is high, indicating the peripheral cannot accept a word. Although the Status Register has a bit (D3) reserved to indicate the condition of the CTS line, it will not be necessary to check it since it is going to inhibit D1 bit anyway. The monitor ROM checks the Status Register prior to loading a word into the Transmitter Register, and will continue looping to check D1 in the Status Register until it finds it set, then the monitor will load the word we want to transfer into the Transmitter Register. We need no extra programming to support our handshake signal, as the monitor is already taking care of this for us.

How To Test

We can now test our system to see if it is working properly. We don't need to hook the printer up to make these checks, in fact it will probably be better if we don't. The first thing we should do is load a fairly long program into the system. As it's loading, notice the speed it is listing on the screen, that's 300 baud. Now from the keyboard, type

POKE71440,3 (reset ACIA) then type POKE61440,16 (program ACIA). Next type SAVE, then LIST. Now you should see the program listing at a speed 16 times faster than it is loaded at, or 4800 baud. Now, as the program is listing, connect your CTS input to either +5 volts or ground (depending on how we configured it earlier) such that you simulate a peripheral BUSY state. The program should stop listing and not continue until we remove the input. If these tests pass then we are ready to hook up our printer; if the tests fail, you will need to go back and recheck the hardware modifications and programming. Check the manual for your printer and see what is necessary to set it up for an RS232 input at 4800 baud. The Anadex printer has 3 sets of dip switches that can be set for a wide range of baud rates, different types of interfaces, paper length, number of lines to skip over perforation etc. Hook the BUSY/READY output from the printer to J3 of your Superboard as described earlier for your system. Hook the RS232 output from your Superboard J3 pin 2 to the printer input. Hook pin 1 of J3 to the printer COM line (ground). Turn on your printer and away you go.

Add A Speaker

If you don't have a printer at this time but want to go ahead and make the hardware addition anyway, you can use this port to hook up a speaker. You can connect an 8 ohm speaker between pins 1 and 2 of J3. Now set up for 4800 baud and see how your program sounds when you LIST it. You can expand on this idea, and add some interesting effects to your existing programs. Remember, when you are in SAVE mode, any PRINT argument goes to the ACIA as well as your screen when you LIST it.

Some Finals

You should be careful not to program the ACIA while you are in the SAVE mode. I don't know why, but it hangs up the system sometimes when you try to do it. POKE517,1 will put you in SAVE mode and POKE517,0 will take you out of it. Although you can now run your printer at 4800 baud, you are still limited to 300 baud for your cassette due to the audio frequencies generated in the cassette portion of your Superboard. Since the PRINT statement sends its argument to the ACIA when in the SAVE mode, we can output to the printer any results we normally send to the video screen. Most small system printers provide 80 columns per line. The Superboard software is set up to force a LF/CR, after 72 consecutive characters to the ACIA. During a cold start, the system defaults to a terminal width of 72 characters per line if you try to request a larger line length. This can be fixed by writing 80 (Hex 50) in the terminal width storage location (hex F) after initialization, by the statement POKE15,80.

Table 1 – Control Register Usage, Bits D0 & D1

D1	D0	RESULTS
0	0	TX Clock input equals the transmit rate (baud)
0	1	TX Clock input is divided by 16 to give transmit rate (baud)
1	0	TX Clock input is divided by 64 to give transmit rate (baud)
1	1	Reset ACIA

Table 2 – Control Register Usage, Bits D2, D3, D4

D4	D3	D2	RESULTS (TRANSMIT FORMAT)
0	0	0	7 bit word, 1 parity bit (even), 2 stop bits
0	0	1	7 bit word, 1 parity bit (odd), 2 stop bits
0	1	0	7 bit word, 1 parity bit (even), 1 stop bit
0	1	1	7 bit word, 1 parity bit (odd), 1 stop bit
1	0	0	8 bit word, 2 stop bits
1	0	1	8 bit word, 1 parity bit (even), 1 stop bit
1	1	1	8 bit word, 1 parity bit (odd), 1 stop bit

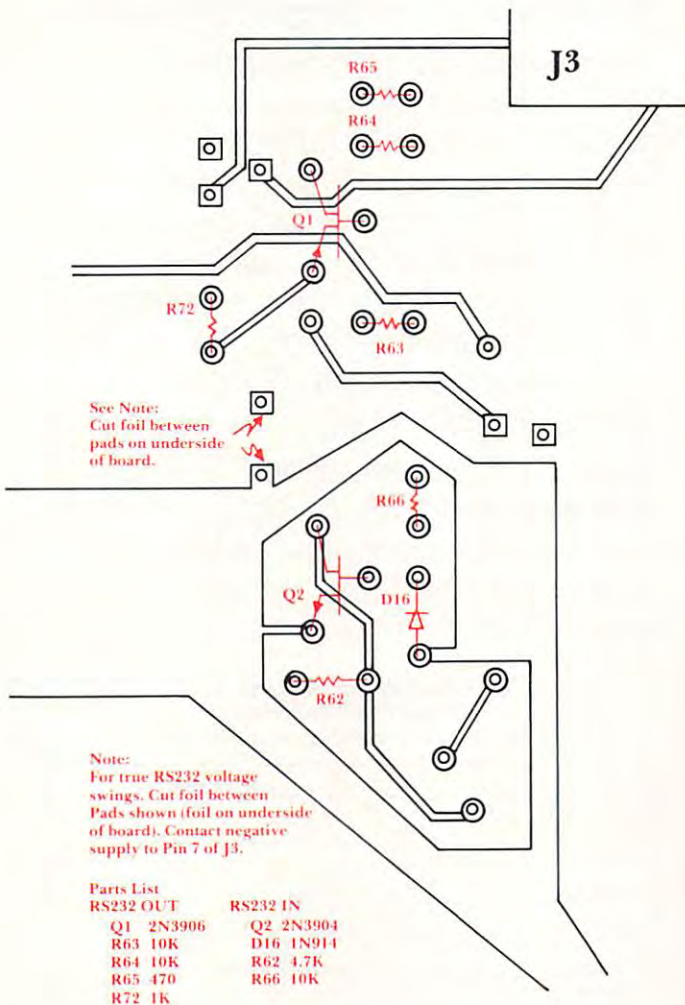


Figure 1

OSI HEXDOS

Can your disk operating system do this?

No matter what you do with your C1P or Superboard II, here's a remarkable disk operating system that will help you do it better. By using subroutines in OSI's ROM BASIC, **HEXDOS** offers power, versatility, and incredible compactness (only 2K). **HEXDOS** far surpasses the capabilities of OS65D, liberating 10K of memory and disk space in the process.

- Load or save BASIC programs, machine language, and data files by name.
- Chain BASIC programs from disk.
- Up to 22 data files may be open simultaneously.
- Resides at the beginning of RAM, leaving maximum space for user programs.
- Full trace of BASIC programs with optional single-stepping.
- Supports real-time clock and tone generator.
- True line editing allows you to correct mistakes easily.
- Includes a disassembler and eight useful programs to demonstrate the power of the system. Two BASIC subroutines add random-access capability to disk files.
- Satisfaction guaranteed, or your money promptly refunded.

"Documentation is clear and complete, the best I have seen from any source."

— Ronald C. Whitaker, *Compute!* magazine, April 1981

Price: \$55. (Manual and 5¼-inch diskette)

The 6502 Program Exchange
2920 West Moana
Reno, NV 89509

HOME OF THE **OSI** FULL .GRAPHICS

W F G MICRO DATA FLIGHT SIMULATOR
STREAMWOOD, ILLINOIS C2/C4P \$14.95
60103

FULL GRAPHICS/MADE EASY...C1/C2/C4P..\$14.95
(VERY USEFUL UTILITY PROGRAM)

SIMON! FULL GRAPHICS(SOUND C4P)....C1/C2/C4P..\$7.95
ADD STEREO MUSIC TO YOUR SYSTEM.....\$7.95
(PLANS AND COMPLETE DOCUMENTATION...TTL LOGIC)

VOTRAX PROGRAMS ON CASSETTE FROM.....\$5.95
CATALOG WITH PROGRAMMING TIPS AND HARD COPY
OF FULL GRAPHICS PROGRAM \$1.00
ALL SOFTWARE COMPLETE WITH HARD COPY....

741 SURREY DRIVE 312/837-7569

Rampaging Robots!

ALIEN SPACESHIPS ARE RELEASING Hordes OF HUGE KILLER ROBOTS ON THE EARTH! HOW MANY CAN YOU DESTROY BEFORE THEY GET YOU?

EXTRA POINTS AND BONUS ENERGY ARE AWARDED FOR HITTING ONE OF THE SPACESHIPS, BUT THE ROBOTS ARE SO FAST THAT IT CAN ALL BE OVER IF YOU BLINK!

RAMPAGING ROBOTS IS A VERY FAST GAME FOR ANY BK OSI BASIC-IN-ROM CASSETTE BASED COMPUTER. IT INCLUDES COLOR & SOUND. (C1 MODEL II COMPATIBLE!)

SAVE \$1.00 BY ORDERING NOW, OR WRITE FOR FREE CATALOG. (NEARLY ALL GAMES FEATURE SOUND FOR C1P)

*****PLEASE SPECIFY YOUR SYSTEM*****

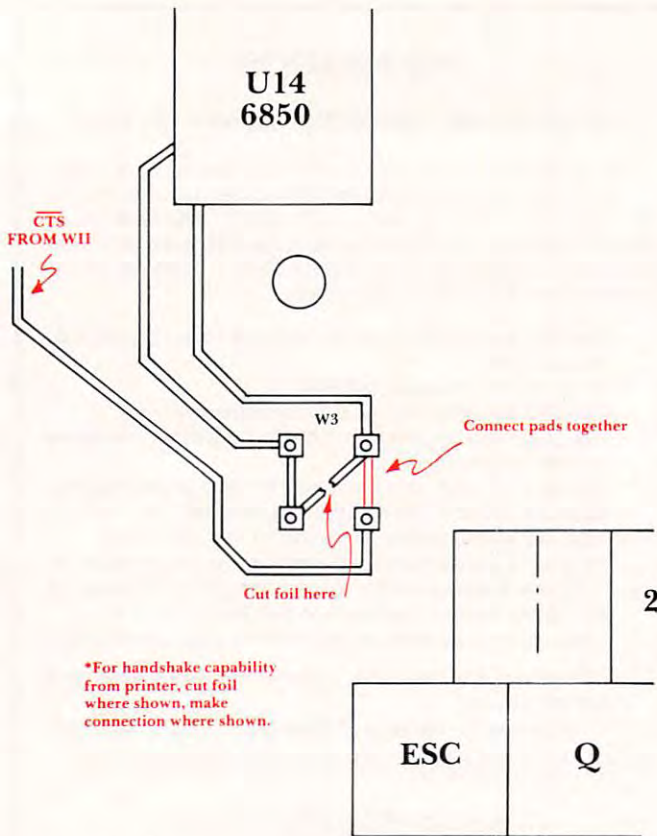
ALL ORDERS ARE SHIPPED POSTAGE PAID! THERE ARE NO HIDDEN POSTAGE OR HANDLING CHARGES! **COMING SOON!**

OSI

DEFENDER

Introductory Offer: \$6.95 (EXPIRES 9/15/81)

Pretzelland Software
2005 A WHITTAKER RD.
YPSILANTI, MI. 48197



*For handshake capability from printer, cut foil where shown, make connection where shown.

Figure 2

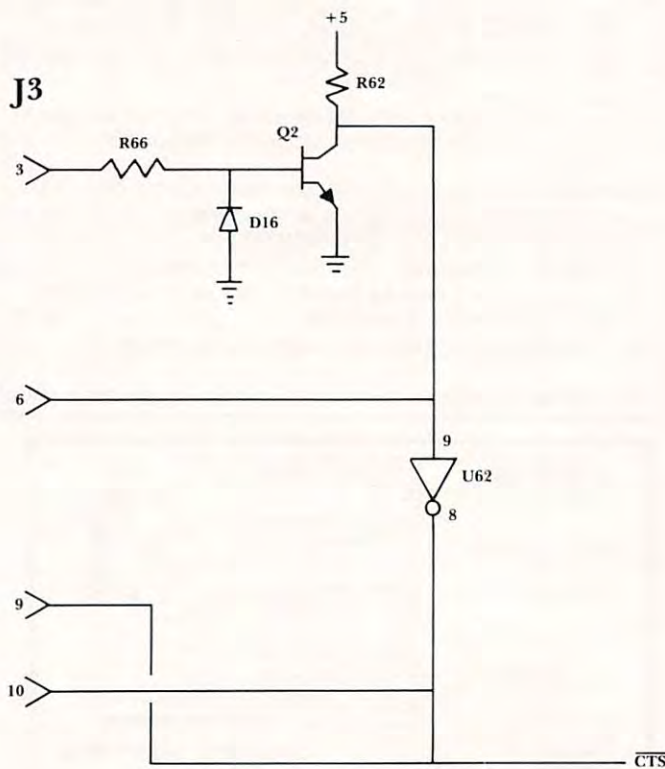


Figure 3

Announcing: COMPUTE!'s FIRST BOOK OF PET/CBM™

Since our first issue in the Fall of 1979, we've provided more PET/CBM information to owners and users than any other magazine in the industry. Now we're taking the best of our published material, adding new material, and putting it all together into our first special PET/CBM book:

COMPUTE!'s First Book Of PET/CBM

will be available in the early Fall. With a design intended to make it easy to use, and contents aimed at assisting a range of users from beginners to advanced, you'll find that **COMPUTE!** Books will become a valuable and permanent addition to your reference library. But what else would you expect? After all, we're the resource.

Reserve your copy today at your **COMPUTE!** dealer. If one's not handy, use the coupon below or call **TOLL FREE 800-227-1617, Ext. 401.**
In California call 800-772-3545, Ext. 401.

**We accept MasterCard and VISA
Dealer Inquiries Invited**

PET/CBM™ trademark of Commodore Business Machines, Inc.

Please send me _____ copy(s) of **COMPUTE!'s** First Book Of PET/CBM @ \$12.95 each.

Name _____

Address _____

City _____ State _____ Zip _____

Please add \$2.00 for postage/handling for each book ordered. Payment must be in US funds. \$1.00 billing fee. All orders from outside US and Canada must be prepaid.